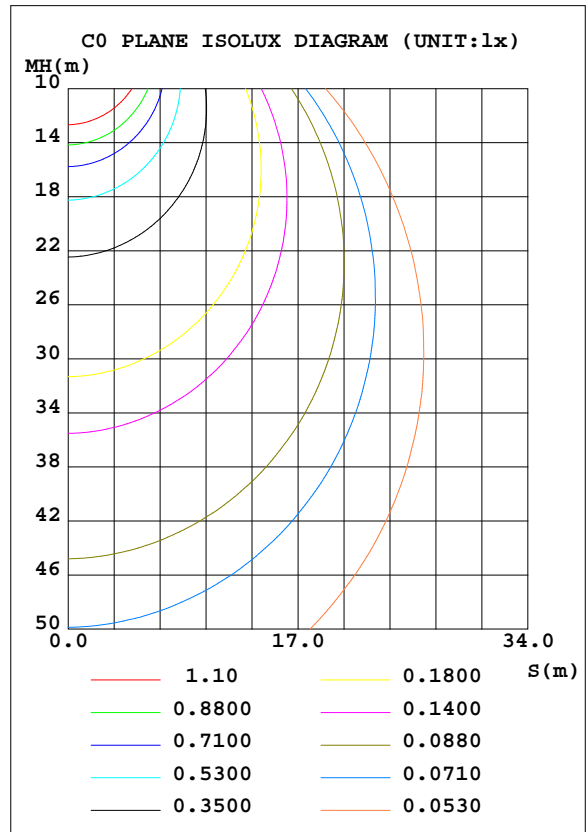
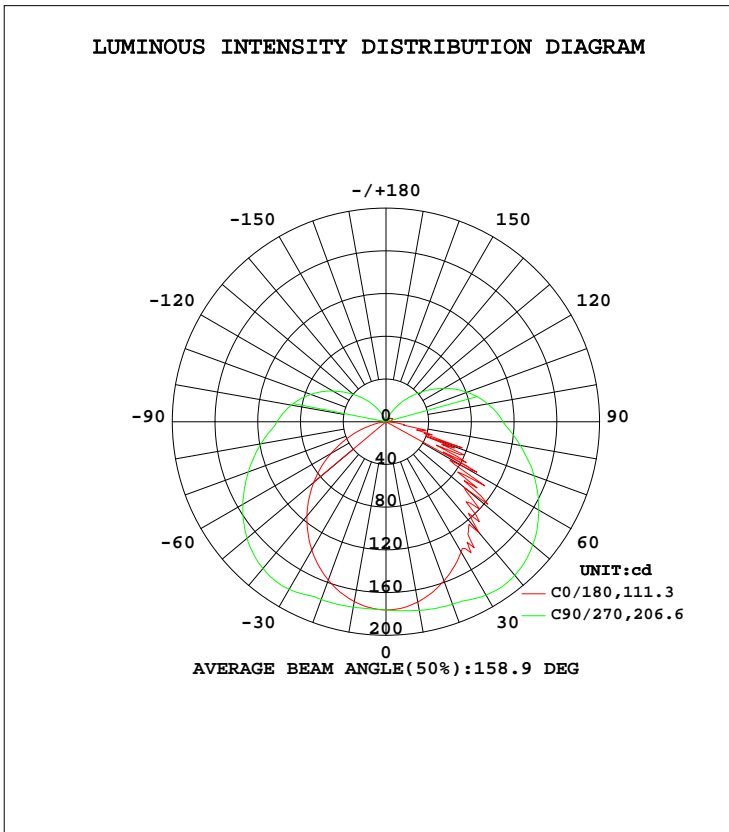


LUMINAIRE PHOTOMETRIC TEST REPORT

Test:U:120.0V I:0.1214A P:14.47W PF:0.9931 Lamp Flux:928.4lx1 lm		
NAME: ASD-OLWS-22-MV-12N15CC-BZ 5000K	TYPE:N/A	WEIGHT:N/A
SPEC.:N/A	DIM.: N/A	SERIAL No.:N/A
MFR.: ASD Lighting corp	SUR.:N/A	Shielding Angle:N/A

DATA OF LAMP		PHOTOMETRIC DATA Eff: 64.16 lm/W			
MODEL ASD-OLWS-22-MV-12N15CC-BZ	5000K	Imax(cd)	189.0	S/MH(C0/180)	1.19
NOMINAL POWER(W)		LOR(%)	100.0	S/MH(C90/270)	1.63
RATED VOLTAGE(V)	120	TOTAL FLUX(lm)	928.41	η UP, DN(C0-180)	9.5,38.9
NOMINAL FLUX(lm)	928.41	CIE CLASS	SEMI-D.	η UP, DN(C180-360)	10.4,41.1
LAMPS INSIDE	1	η up(%)	20.0	CIBSE SHR NOM	1.50
TEST VOLTAGE(V)	120	η down(%)	80.0	CIBSE SHR MAX	1.55



C Range: 0 - 360DEG
 C Interval: 22.5DEG
 Test Speed: HIGH
 Temperature:25.6DEG
 Operators:Carl
 Test Date:2022-05-30

γ Range: 0 - 180DEG
 γ Interval: 1.0DEG
 Test System:EVERFINE GO-R5000_V2 SYSTEM V2.0.351
 Humidity:39%
 Test Distance:2.526m [K=1.0000]
 Remarks:

ZONAL FLUX DIAGRAM

ZONAL FLUX DIAGRAM:

γ	C0	C45	C90	C135	C180	C225	C270	C315	γ	Φ zone	Φ total	%lum,lamp
10	170.9	173.1	176.3	174.1	171.4	175.8	179.2	175.2	0- 10	16.74	16.74	1.8,1.8
20	158.0	166.4	177.1	168.7	158.7	170.8	181.8	170.2	10- 20	48.69	65.43	7.05,7.05
30	138.8	156.6	181.1	160.6	140.8	162.7	187.4	162.2	20- 30	76.39	141.8	15.3,15.3
40	115.2	148.0	179.3	153.8	135.6	155.3	187.6	155.1	30- 40	98.82	240.6	25.9,25.9
50	88.28	133.7	169.8	144.1	95.56	149.9	179.4	142.3	40- 50	113.0	353.7	38.1,38.1
60	59.52	114.5	154.8	127.1	86.79	126.9	165.1	122.9	50- 60	115.9	469.5	50.6,50.6
70	30.96	93.10	137.1	102.6	39.48	112.1	147.6	102.1	60- 70	107.7	577.2	62.2,62.2
80	7.684	73.43	118.9	84.00	16.69	85.25	127.7	82.37	70- 80	91.83	669.0	72.1,72.1
90	0.0606	58.00	102.1	67.54	1.414	67.88	109.6	66.68	80- 90	73.91	742.9	80,80
100	0.0792	47.90	89.97	57.17	4.440	57.67	96.88	55.91	90-100	60.84	803.8	86.6,86.6
110	0.0930	36.87	75.11	45.67	6.497	45.98	80.96	43.75	100-110	48.91	852.7	91.8,91.8
120	0.1141	25.78	57.61	31.82	6.153	32.39	62.65	31.20	110-120	35.58	888.3	95.7,95.7
130	0.1611	16.28	39.88	20.87	5.000	20.17	43.55	19.75	120-130	22.48	910.7	98.1,98.1
140	0.2422	7.871	24.15	10.86	3.394	9.001	25.84	9.534	130-140	11.96	922.7	99.4,99.4
150	0.3511	0.5684	10.49	2.258	2.232	1.375	9.614	1.541	140-150	4.690	927.4	99.9,99.9
160	0.4358	0.4634	0.5781	0.7778	1.127	0.8300	0.4997	0.3200	150-160	0.8261	928.2	100,100
170	0.3891	0.4390	0.5729	0.6899	0.5217	0.5157	0.3942	0.3641	160-170	0.1591	928.4	100,100
180	0.6044	0.5278	0.3404	0.3969	0.5104	0.5056	0.4261	0.3706	170-180	0.0426	928.4	100,100
DEG	LUMINOUS INTENSITY:cd									UNIT:lm		

Conical surface Flux(90deg): 295.93 lm

%lum = 31.9%

%lamp = 31.9%

Conical surface Flux(120deg): 469.54 lm

%lum = 50.6%

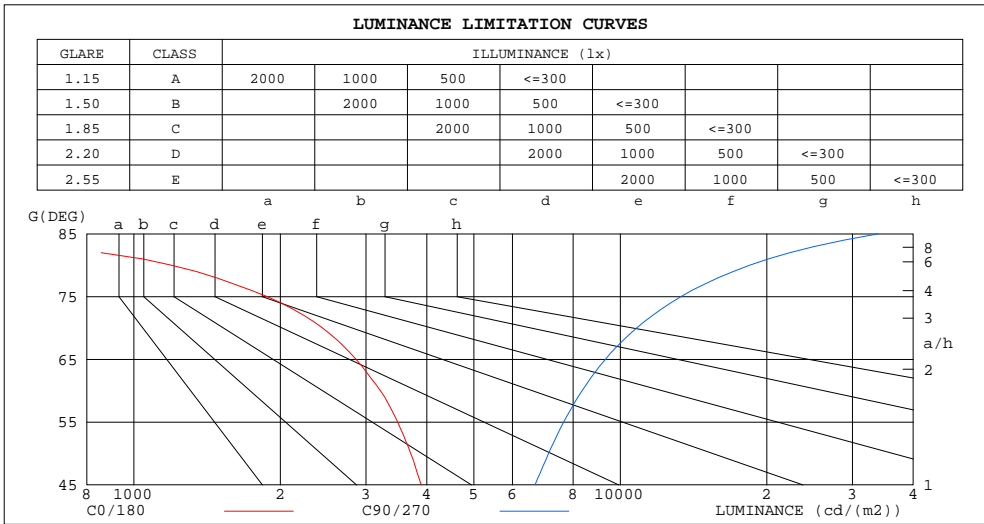
%lamp = 50.6%

C Range: 0 - 360DEG
 C Interval: 22.5DEG
 Test Speed: HIGH
 Temperature:25.6DEG
 Operators:Carl
 Test Date:2022-05-30

γ Range: 0 - 180DEG
 γ Interval: 1.0DEG
 Test System:EVERFINE GO-R5000_V2 SYSTEM V2.0.351
 Humidity:39%
 Test Distance:2.526m [K=1.0000]
 Remarks:

LUMINANCE LIMITATION CURVES

Test:U:120.0V I:0.1214A P:14.47W PF:0.9931 Lamp Flux:928.41x1 lm		
NAME: ASD-OLWS-22-MV-12N15CC-BZ 5000K	TYPE:N/A	WEIGHT:N/A
SPEC.:N/A	DIM.: N/A	SERIAL No.:N/A
MFR.: ASD Lighting corp	SUR.:N/A	Shielding Angle:N/A



LUMINANCE cd/(m2)		
G(DEG)	C0/180	C90/270
85	161	33899
80	1194	18449
75	1879	13329
70	2442	10802
65	2863	9320
60	3212	8342
55	3487	7649
50	3706	7119
45	3895	6679

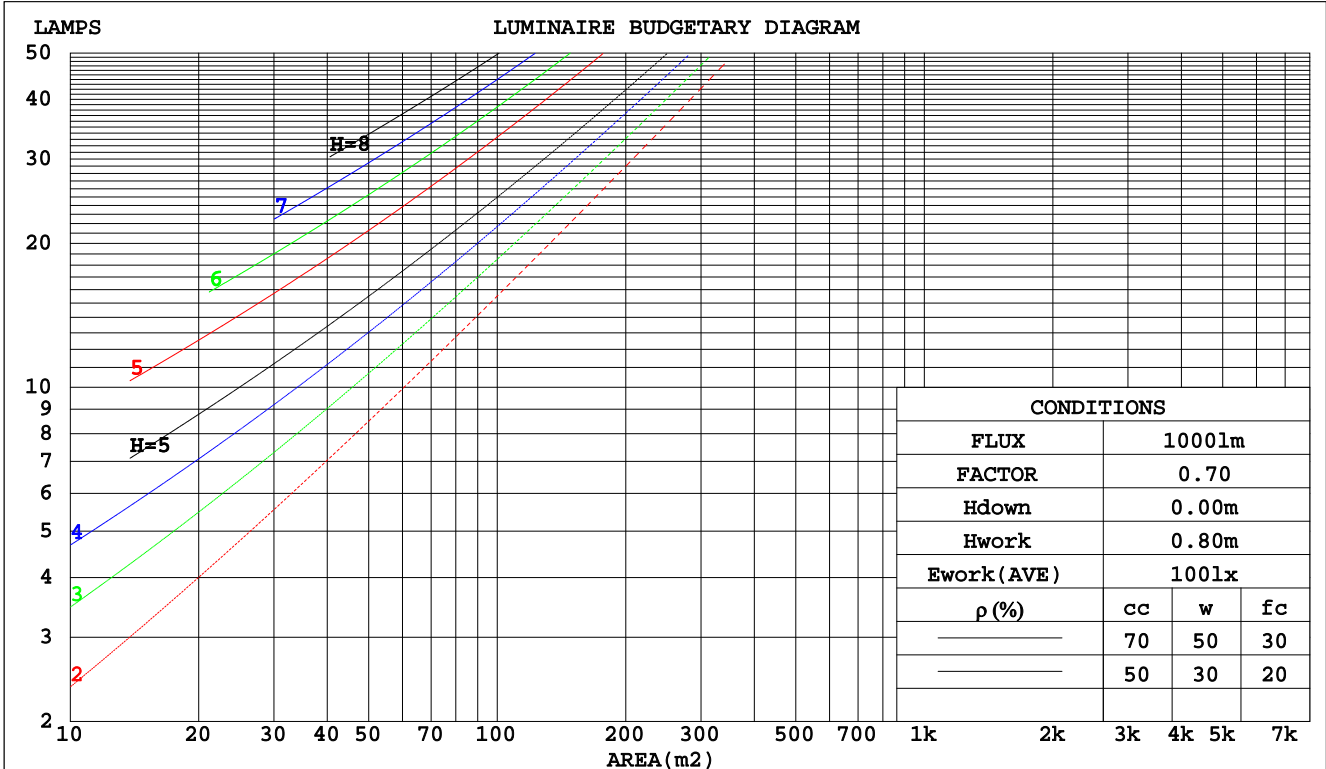
C Range: 0 - 360DEG
 C Interval: 22.5DEG
 Test Speed: HIGH
 Temperature:25.6DEG
 Operators:Carl
 Test Date:2022-05-30

γ Range: 0 - 180DEG
 γ Interval: 1.0DEG
 Test System:EVERFINE GO-R5000_V2 SYSTEM V2.0.351
 Humidity:39%
 Test Distance:2.526m [K=1.0000]
 Remarks:

CU AND LUMINAIRE BUDGETARY ESTIMATE DIAGRAM

Test:U:120.0V I:0.1214A P:14.47W PF:0.9931 Lamp Flux:928.4lx1 lm		
NAME: ASD-OLWS-22-MV-12N15CC-BZ 5000K	TYPE:N/A	WEIGHT:N/A
SPEC.:N/A	DIM.: N/A	SERIAL No.:N/A
MFR.: ASD Lighting corp	SUR.:N/A	Shielding Angle:N/A

pcc	80%			70%			50%			30%			10%			0
pw	50%	30%	10%	50%	30%	10%	50%	30%	10%	50%	30%	10%	50%	30%	10%	0
pfc	20%			20%			20%			20%			20%			0
RCR	RCR:Room Cavity Ratio						Coefficients of Utilization(CU)									
0.0	1.14	1.14	1.14	1.09	1.09	1.09	1.00	1.00	1.00	.92	.92	.92	.84	.84	.84	.80
1.0	.95	.89	.84	.90	.85	.81	.82	.78	.75	.75	.72	.69	.68	.66	.63	.60
2.0	.81	.73	.66	.77	.70	.64	.70	.64	.59	.64	.59	.55	.58	.54	.51	.47
3.0	.70	.61	.53	.67	.58	.51	.61	.54	.48	.55	.49	.45	.50	.45	.41	.38
4.0	.61	.51	.44	.58	.50	.43	.53	.46	.40	.48	.42	.37	.44	.39	.35	.32
5.0	.54	.44	.37	.52	.43	.36	.47	.40	.34	.43	.37	.32	.39	.34	.30	.27
6.0	.48	.39	.32	.46	.37	.31	.42	.35	.29	.39	.32	.27	.35	.30	.26	.23
7.0	.43	.34	.28	.42	.33	.27	.38	.31	.26	.35	.29	.24	.32	.27	.22	.20
8.0	.39	.31	.25	.38	.30	.24	.35	.28	.23	.32	.26	.21	.29	.24	.20	.18
9.0	.36	.28	.22	.35	.27	.21	.32	.25	.20	.29	.23	.19	.27	.22	.18	.16
10.0	.33	.25	.20	.32	.24	.19	.29	.23	.18	.27	.21	.17	.25	.20	.16	.14



C Range: 0 - 360DEG
 C Interval: 22.5DEG
 Test Speed: HIGH
 Temperature: 25.6DEG
 Operators: Carl
 Test Date: 2022-05-30

γ Range: 0 - 180DEG
 γ Interval: 1.0DEG
 Test System: EVERFINE GO-R5000_V2 SYSTEM V2.0.351
 Humidity: 39%
 Test Distance: 2.526m [K=1.0000]
 Remarks:

WEC AND CCEC

Test:U:120.0V I:0.1214A P:14.47W PF:0.9931 Lamp Flux:928.41x1 lm		
NAME: ASD-OLWS-22-MV-12N15CC-BZ 5000K	TYPE:N/A	WEIGHT:N/A
SPEC.:N/A	DIM.: N/A	SERIAL No.:N/A
MFR.: ASD Lighting corp	SUR.:N/A	Shielding Angle:N/A

ρcc	80%			70%			50%			30%			10%			0
ρw	50%	30%	10%	50%	30%	10%	50%	30%	10%	50%	30%	10%	50%	30%	10%	0
ρfc	20%			20%			20%			20%			20%			0
RCR	RCR:Room Cavity Ratio						Wall Exitance Coefficients(WEC)									
0.0																
1.0	.395	.224	.071	.381	.217	.069	.356	.204	.065	.333	.192	.062	.312	.181	.058	
2.0	.340	.186	.057	.328	.181	.056	.305	.170	.053	.284	.159	.050	.265	.150	.047	
3.0	.301	.160	.048	.290	.155	.047	.269	.146	.044	.250	.137	.042	.233	.129	.040	
4.0	.270	.140	.041	.260	.136	.040	.242	.128	.038	.224	.121	.036	.208	.113	.034	
5.0	.245	.125	.036	.236	.121	.035	.219	.114	.034	.204	.107	.032	.189	.101	.030	
6.0	.224	.112	.032	.216	.109	.031	.201	.103	.030	.186	.097	.028	.173	.091	.027	
7.0	.207	.102	.029	.199	.099	.028	.185	.094	.027	.172	.088	.026	.159	.083	.024	
8.0	.191	.094	.026	.185	.091	.026	.172	.086	.024	.159	.081	.023	.148	.076	.022	
9.0	.178	.086	.024	.172	.084	.024	.160	.079	.022	.149	.075	.021	.138	.070	.020	
10.0	.167	.080	.022	.161	.078	.022	.150	.073	.021	.139	.069	.020	.129	.065	.019	

ρcc	80%			70%			50%			30%			10%			0
ρw	50%	30%	10%	50%	30%	10%	50%	30%	10%	50%	30%	10%	50%	30%	10%	0
ρfc	20%			20%			20%			20%			20%			0
RCR	RCR:Room Cavity Ratio						Ceiling Cavity Exitance Coefficients(CCEC)									
0.0	.343	.343	.343	.293	.293	.293	.200	.200	.200	.115	.115	.115	.037	.037	.037	
1.0	.340	.309	.281	.291	.265	.242	.199	.182	.167	.114	.106	.097	.037	.034	.031	
2.0	.333	.286	.247	.285	.246	.213	.196	.170	.149	.113	.099	.087	.036	.032	.028	
3.0	.326	.270	.225	.279	.233	.195	.192	.162	.137	.111	.094	.081	.036	.031	.026	
4.0	.318	.257	.211	.273	.222	.183	.188	.155	.129	.109	.091	.076	.035	.030	.025	
5.0	.310	.248	.202	.267	.214	.175	.184	.150	.124	.106	.088	.073	.034	.029	.024	
6.0	.303	.240	.195	.260	.208	.169	.180	.145	.120	.104	.086	.071	.034	.028	.024	
7.0	.296	.233	.190	.254	.202	.165	.176	.142	.117	.102	.084	.070	.033	.027	.023	
8.0	.289	.228	.186	.249	.198	.162	.172	.139	.115	.100	.082	.068	.032	.027	.023	
9.0	.283	.223	.183	.244	.194	.159	.169	.136	.113	.098	.080	.067	.032	.026	.022	
10.0	.277	.219	.180	.239	.190	.157	.166	.134	.112	.097	.079	.067	.031	.026	.022	

C Range: 0 - 360DEG
 C Interval: 22.5DEG
 Test Speed: HIGH
 Temperature:25.6DEG
 Operators:Carl
 Test Date:2022-05-30

γ Range: 0 - 180DEG
 γ Interval: 1.0DEG
 Test System:EVERFINE GO-R5000_V2 SYSTEM V2.0.351
 Humidity:39%
 Test Distance:2.526m [K=1.0000]
 Remarks:

UGR(Unified Glare Rating) Table

Test:U:120.0V I:0.1214A P:14.47W PF:0.9931 Lamp Flux:928.4lx1 lm										
NAME: ASD-OLWS-22-MV-12N15CC-BZ 5000K					TYPE:N/A			WEIGHT:N/A		
SPEC.:N/A					DIM.: N/A			SERIAL No.:N/A		
MFR.: ASD Lighting corp					SUR.:N/A			Shielding Angle:N/A		
ceiling/cavity	0.7	0.7	0.5	0.5	0.3	0.7	0.7	0.5	0.5	0.3
walls	0.5	0.3	0.5	0.3	0.3	0.5	0.3	0.5	0.3	0.3
working plane	0.2	0.2	0.2	0.2	0.2	0.2	0.2	0.2	0.2	0.2
Room dimensions	Viewed crosswise					Viewed endwise				
x = 2H y = 2H	15.5	16.8	16.0	17.4	18.0	19.2	20.5	19.7	21.1	21.7
3H	16.7	17.9	17.2	18.5	19.1	21.9	23.2	22.5	23.8	24.4
4H	17.1	18.3	17.6	18.8	19.5	23.5	24.7	24.1	25.3	25.9
6H	17.3	18.4	17.9	19.0	19.7	25.2	26.3	25.8	26.9	27.6
8H	17.3	18.4	17.9	19.0	19.7	26.1	27.2	26.7	27.8	28.5
12H	17.2	18.3	17.9	18.9	19.6	27.2	28.3	27.8	28.9	29.6
4H 2H	17.0	18.2	17.6	18.8	19.5	19.6	20.8	20.2	21.4	22.1
3H	18.5	19.6	19.1	20.2	20.9	22.6	23.7	23.3	24.3	25.0
4H	19.1	20.1	19.8	20.7	21.5	24.4	25.3	25.0	26.0	26.7
6H	19.5	20.4	20.2	21.0	21.8	26.3	27.2	27.0	27.9	28.6
8H	19.6	20.4	20.3	21.1	21.9	27.4	28.2	28.1	28.9	29.7
12H	19.6	20.4	20.3	21.1	21.9	28.6	29.4	29.3	30.1	30.9
8H 4H	20.6	21.4	21.3	22.1	22.9	24.6	25.4	25.3	26.1	26.9
6H	21.4	22.1	22.1	22.8	23.6	26.9	27.6	27.6	28.3	29.1
8H	21.7	22.3	22.4	23.1	23.9	28.2	28.8	28.9	29.5	30.4
12H	21.9	22.4	22.7	23.2	24.1	29.7	30.2	30.4	31.0	31.9
12H 4H	21.1	21.8	21.8	22.5	23.3	24.6	25.4	25.3	26.1	26.9
6H	22.2	22.8	22.9	23.5	24.4	27.0	27.6	27.7	28.3	29.2
8H	22.7	23.3	23.5	24.0	24.9	28.4	28.9	29.1	29.6	30.5
Variations with the observer position at spacings:										
S = 1.0H	+ 0.1 / - 0.1					+ 0.1 / - 0.1				
1.5H	+ 0.2 / - 0.3					+ 0.2 / - 0.2				
2.0H	+ 0.3 / - 0.4					+ 0.2 / - 0.3				

CIE Pub.117 Corrected 928.4 lm Total Lamp Luminous Flux. (8log(F/F0) = -0.3)

C Range: 0 - 360DEG
 C Interval: 22.5DEG
 Test Speed: HIGH
 Temperature:25.6DEG
 Operators:Carl
 Test Date:2022-05-30

γ Range: 0 - 180DEG
 γ Interval: 1.0DEG
 Test System:EVERFINE GO-R5000_V2 SYSTEM V2.0.351
 Humidity:39%
 Test Distance:2.526m [K=1.0000]
 Remarks:

UTILIZATION FACTORS TABLE

Test:U:120.0V I:0.1214A P:14.47W PF:0.9931 Lamp Flux:928.4lx1 lm		
NAME: ASD-OLWS-22-MV-12N15CC-BZ 5000K	TYPE:N/A	WEIGHT:N/A
SPEC.:N/A	DIM.: N/A	SERIAL No.:N/A
MFR.: ASD Lighting corp	SUR.:N/A	Shielding Angle:N/A

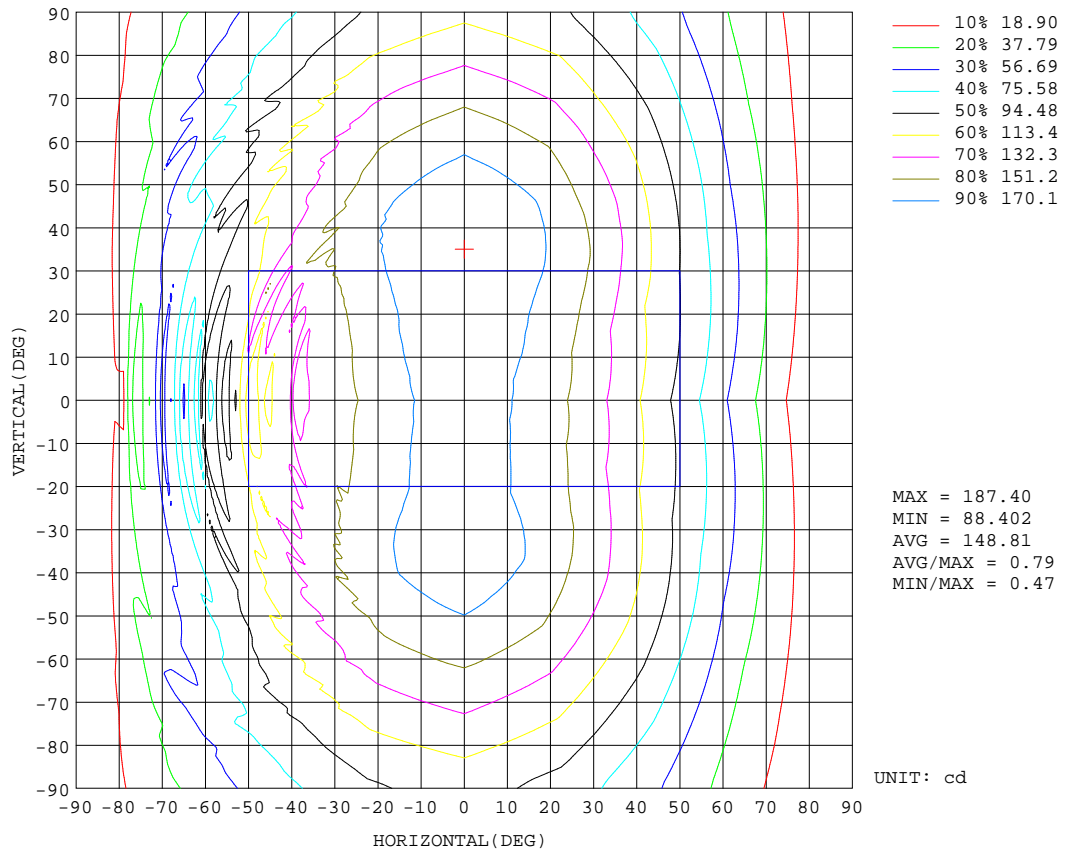
REFLECTANCE										
Ceiling	0.8	0.8	0.8	0.7	0.7	0.7	0.5	0.5	0.5	0
Walls	0.7	0.5	0.3	0.7	0.5	0.3	0.7	0.5	0.3	0
Working plane	0.2	0.2	0.2	0.2	0.2	0.2	0.2	0.2	0.2	0
ROOM INDEX	UTILIZATION FACTORS(PERCENT) $k(RI) \times RCR = 5$									
k = 0.60	46	33	26	45	33	26	43	32	25	19
0.80	55	42	34	53	41	33	51	40	32	24
1.00	63	50	41	61	48	40	57	49	39	30
1.25	70	57	48	67	55	47	63	53	45	36
1.50	75	62	53	72	61	52	67	57	50	40
2.00	82	71	62	79	69	61	73	65	58	46
2.50	87	76	68	84	74	66	77	69	63	50
3.00	91	81	73	87	78	71	80	73	67	53
4.00	96	87	81	92	84	78	84	78	73	58
5.00	99	92	85	95	88	83	87	82	77	61
ROOM INDEX	UF(total)									Direct
According to DIN EN 13032-2 2004			Suspended				SHRNOM = 1.25			

C Range: 0 - 360DEG
 C Interval: 22.5DEG
 Test Speed: HIGH
 Temperature:25.6DEG
 Operators:Carl
 Test Date:2022-05-30

γ Range: 0 - 180DEG
 γ Interval: 1.0DEG
 Test System:EVERFINE GO-R5000_V2 SYSTEM V2.0.351
 Humidity:39%
 Test Distance:2.526m [K=1.0000]
 Remarks:

ISOCANDELA DIAGRAM

Test:U:120.0V I:0.1214A P:14.47W PF:0.9931 Lamp Flux:928.4lx1 lm		
NAME: ASD-OLWS-22-MV-12N15CC-BZ 5000K	TYPE:N/A	WEIGHT:N/A
SPEC.:N/A	DIM.: N/A	SERIAL No.:N/A
MFR.: ASD Lighting corp	SUR.:N/A	Shielding Angle:N/A



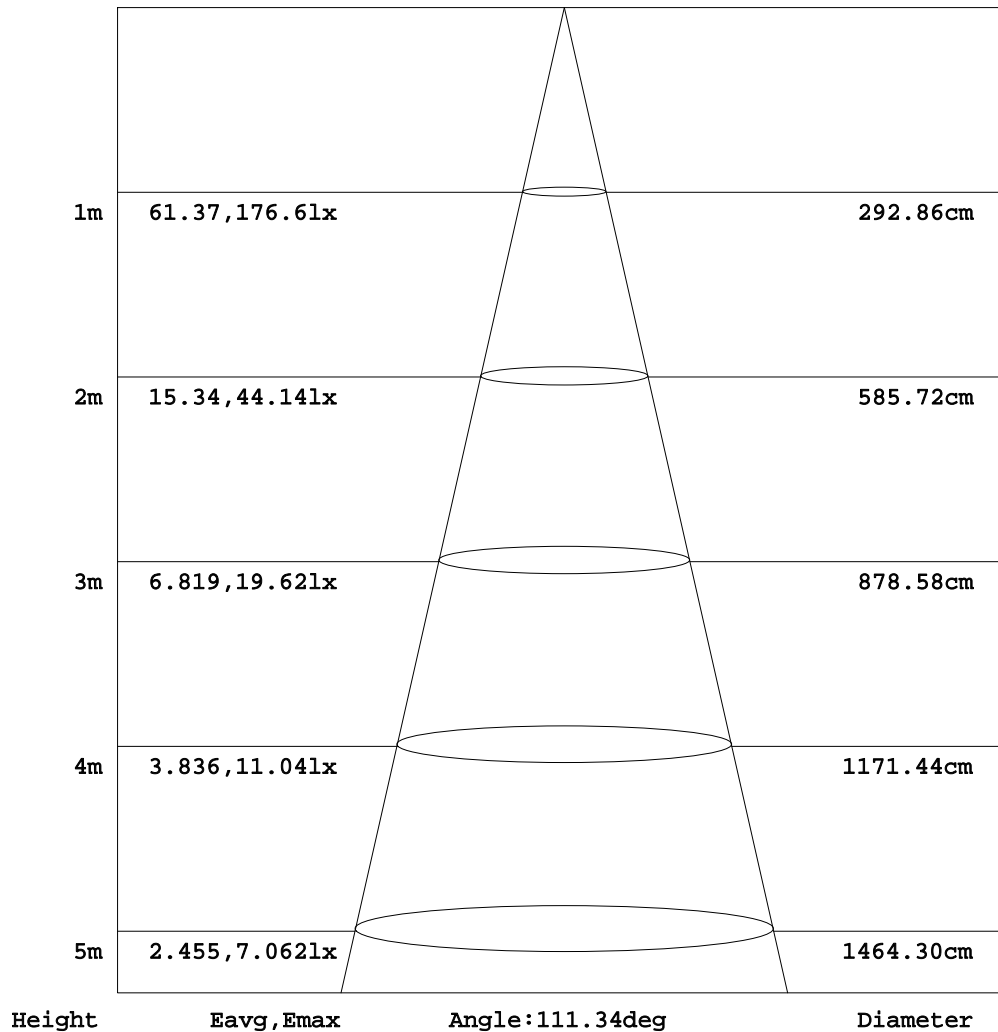
C Range: 0 - 360DEG
 C Interval: 22.5DEG
 Test Speed: HIGH
 Temperature:25.6DEG
 Operators:Carl
 Test Date:2022-05-30

γ Range: 0 - 180DEG
 γ Interval: 1.0DEG
 Test System:EVERFINE GO-R5000_V2 SYSTEM V2.0.351
 Humidity:39%
 Test Distance:2.526m [K=1.0000]
 Remarks:

AAI Figure

Test:U:120.0V I:0.1214A P:14.47W PF:0.9931 Lamp Flux:928.4lx1 lm		
NAME: ASD-OLWS-22-MV-12N15CC-BZ 5000K	TYPE:N/A	WEIGHT:N/A
SPEC.:N/A	DIM.: N/A	SERIAL No.:N/A
MFR.: ASD Lighting corp	SUR.:N/A	Shielding Angle:N/A

Flux out:423.8 lm



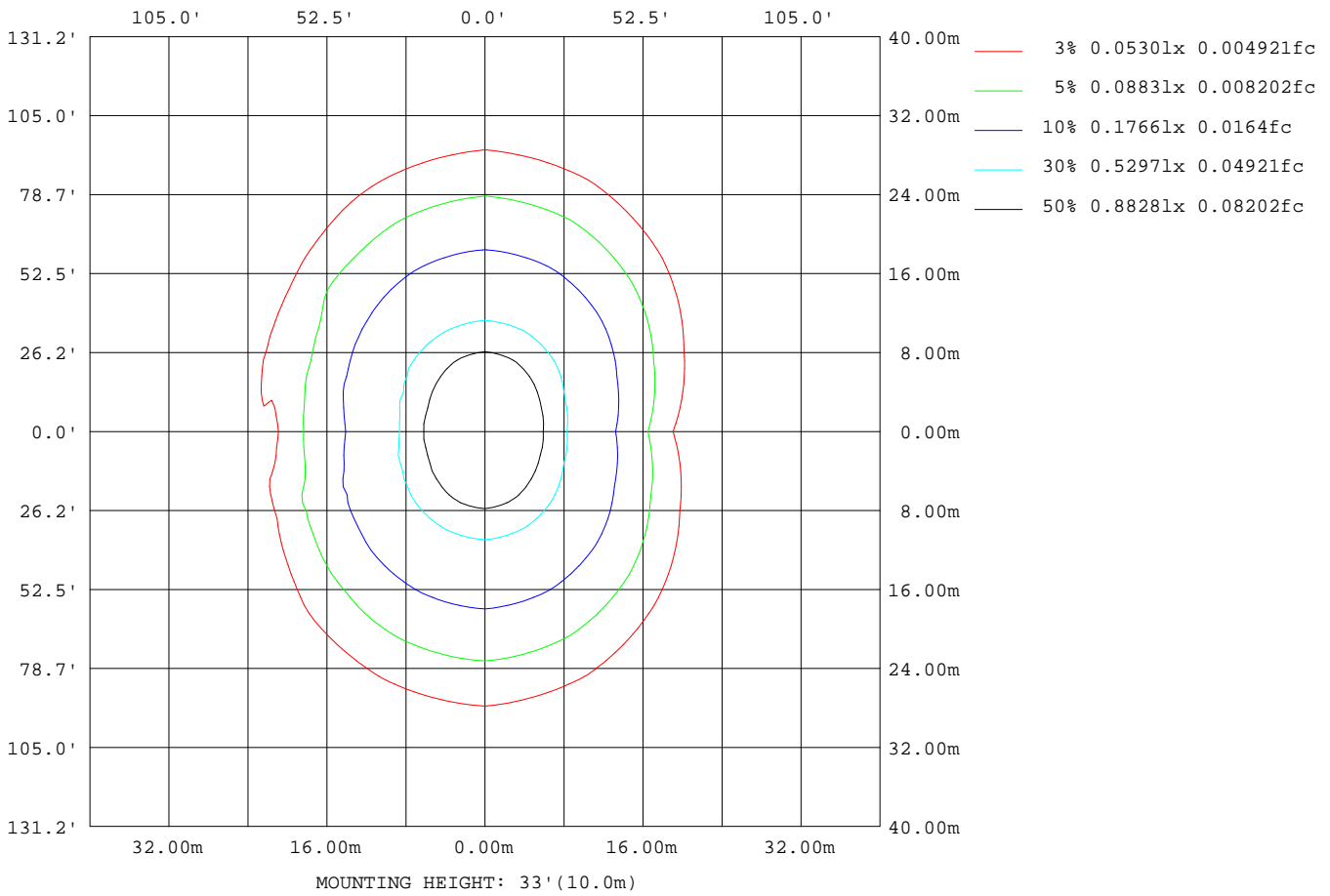
Note:The Curves indicate the illuminated area and the average illumination when the luminaire is at different distance.

C Range: 0 - 360DEG
 C Interval: 22.5DEG
 Test Speed: HIGH
 Temperature:25.6DEG
 Operators:Carl
 Test Date:2022-05-30

γ Range: 0 - 180DEG
 γ Interval: 1.0DEG
 Test System:EVERFINE GO-R5000_V2 SYSTEM V2.0.351
 Humidity:39%
 Test Distance:2.526m [K=1.0000]
 Remarks:

ISOLUX DIAGRAM

Test:U:120.0V I:0.1214A P:14.47W PF:0.9931 Lamp Flux:928.41x1 lm		
NAME: ASD-OLWS-22-MV-12N15CC-BZ 5000K	TYPE:N/A	WEIGHT:N/A
SPEC.:N/A	DIM.: N/A	SERIAL No.:N/A
MFR.: ASD Lighting corp	SUR.:N/A	Shielding Angle:N/A



C Range: 0 - 360DEG
 C Interval: 22.5DEG
 Test Speed: HIGH
 Temperature:25.6DEG
 Operators:Carl
 Test Date:2022-05-30

γ Range: 0 - 180DEG
 γ Interval: 1.0DEG
 Test System:EVERFINE GO-R5000_V2 SYSTEM V2.0.351
 Humidity:39%
 Test Distance:2.526m [K=1.0000]
 Remarks:

LED Avg.L Report

Test:U:120.0V I:0.1214A P:14.47W PF:0.9931 Lamp Flux:928.4lx1 lm		
NAME: ASD-OLWS-22-MV-12N15CC-BZ 5000K	TYPE:N/A	WEIGHT:N/A
SPEC.:N/A	DIM.: N/A	SERIAL No.:N/A
MFR.: ASD Lighting corp	SUR.:N/A	Shielding Angle:N/A

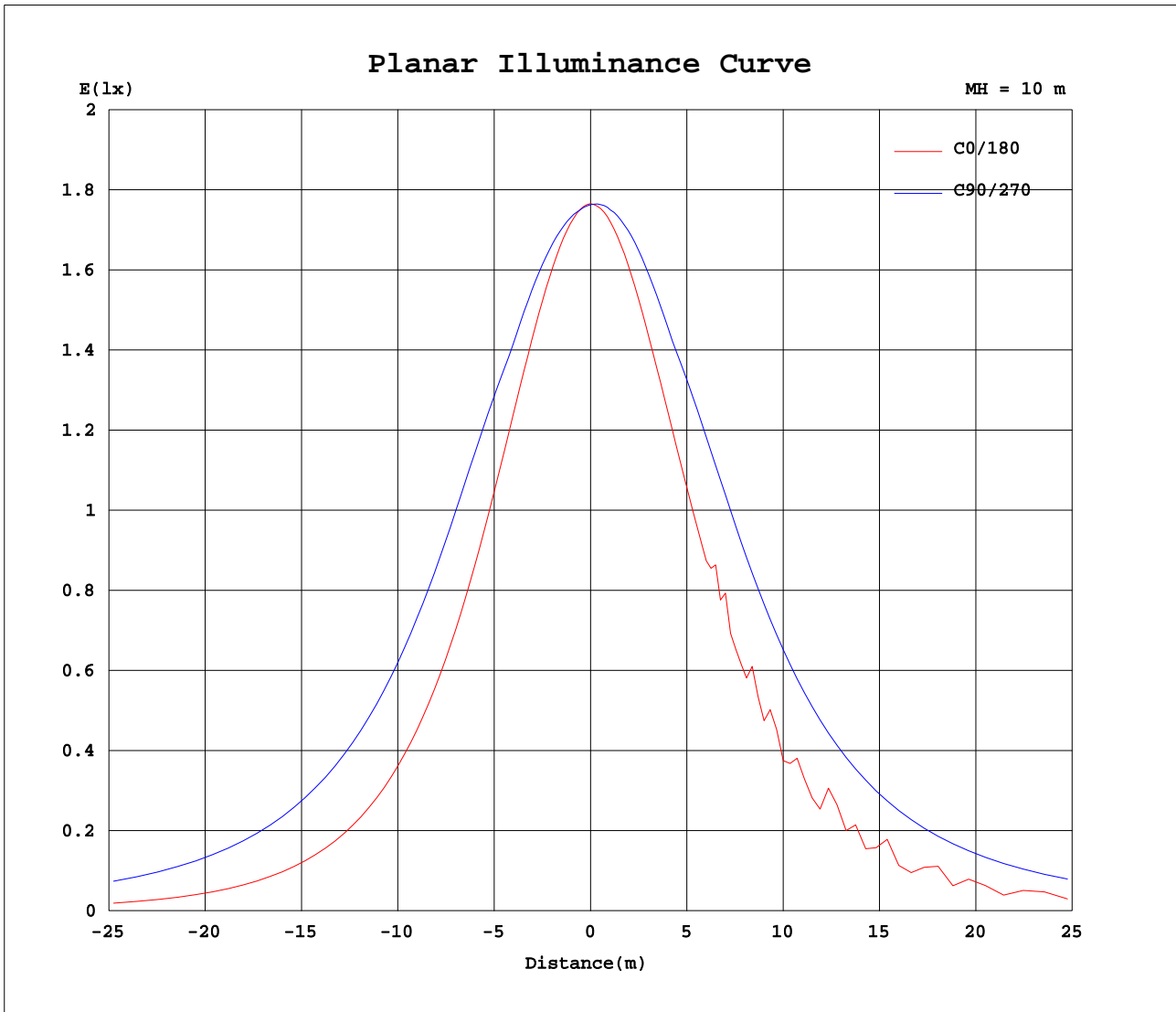
AvgL	cd/m2
L_0~180(65)av	3085
L_0~180(75)av	2488
L_0~180(85)av	1001
L_90~270(65)av	9658
L_90~270(75)av	13824
L_90~270(85)av	35216
L_45(65)av	7189
L_45(75)av	9478
L_45(85)av	22383

Standard: GB/T 29293-2012

C Range: 0 - 360DEG
C Interval: 22.5DEG
Test Speed: HIGH
Temperature:25.6DEG
Operators:Carl
Test Date:2022-05-30

γ Range: 0 - 180DEG
 γ Interval: 1.0DEG
Test System:EVERFINE GO-R5000_V2 SYSTEM V2.0.351
Humidity:39%
Test Distance:2.526m [K=1.0000]
Remarks:

Planar Illuminance Curve



C Range: 0 - 360DEG
 C Interval: 22.5DEG
 Test Speed: HIGH
 Temperature: 25.6DEG
 Operators: Carl
 Test Date: 2022-05-30

γ Range: 0 - 180DEG
 γ Interval: 1.0DEG
 Test System: EVERFINE GO-R5000_V2 SYSTEM V2.0.351
 Humidity: 39%
 Test Distance: 2.526m [K=1.0000]
 Remarks:

LUMINOUS DISTRIBUTION INTENSITY DATA

Test:U:120.0V I:0.1214A P:14.47W PF:0.9931 Lamp Flux:928.41x1 lm		
NAME: ASD-OLWS-22-MV-12N15CC-BZ 5000K	TYPE:N/A	WEIGHT:N/A
SPEC.:N/A	DIM.: N/A	SERIAL No.:N/A
MFR.: ASD Lighting corp	SUR.:N/A	Shielding Angle:N/A

Table--1

UNIT: cd

C(DEG)\ γ (DEG)	0	22.5	45	67.5	90	112.5	135	157.5	180	202.5	225	247.5	270	292.5	315	337.5			
0	176	176	176	176	176	176	176	176	176	176	176	176	176	176	176	176			
5	175	175	175	176	176	176	176	175	175	176	177	177	178	177	176	175			
10	171	171	173	175	176	176	174	172	171	173	176	178	179	178	175	172			
15	165	166	170	174	177	176	172	168	166	169	174	179	181	178	173	168			
20	158	160	166	173	177	175	169	162	159	163	171	178	182	178	170	162			
25	149	152	162	172	179	174	165	156	150	156	167	178	184	178	167	155			
30	139	144	157	173	181	176	161	148	141	148	163	180	187	180	162	147			
35	127	134	153	172	181	175	158	148	144	140	159	180	189	180	159	136			
40	115	124	148	169	179	172	154	141	136	135	155	178	188	178	155	127			
45	102	113	142	164	175	168	148	131	106	119	150	174	185	174	150	116			
50	88.3	102	134	158	170	162	144	131	95.6	145	150	168	179	168	142	107			
55	74.1	91.8	124	150	163	154	136	111	82.1	108	133	160	173	161	133	96.4			
60	59.5	80.7	114	141	155	146	127	101	86.8	107	127	152	165	153	123	85.6			
65	44.8	68.9	104	132	146	136	113	87.1	51.9	95.7	122	143	157	144	113	73.9			
70	31.0	56.5	93.1	123	137	127	103	78.0	39.5	73.7	112	133	148	133	102	62.1			
75	18.0	44.8	82.8	113	128	118	95.9	60.8	29.8	70.4	93.5	124	138	124	92.0	50.6			
80	7.68	34.5	73.4	104	119	109	84.0	62.5	16.7	58.1	85.2	114	128	115	82.4	40.4			
85	0.52	26.3	64.9	95.4	110	99.6	74.9	42.6	5.96	44.4	76.3	105	118	105	73.6	32.1			
90	0.06	20.7	58.0	88.2	102	91.9	67.5	35.4	1.41	32.2	67.9	96.3	110	97.4	66.7	26.5			
95	0.07	16.8	53.1	82.9	96.5	86.5	63.0	30.6	2.83	29.2	63.2	90.5	104	91.8	61.5	22.3			
100	0.08	13.5	47.9	76.7	90.0	80.4	57.2	26.4	4.44	23.8	57.7	84.1	96.9	85.2	55.9	18.4			
105	0.09	10.6	42.5	70.2	82.9	73.6	50.9	24.0	5.65	20.0	52.2	77.0	89.3	78.1	49.9	14.9			
110	0.09	8.25	36.9	63.0	75.1	66.3	45.7	17.9	6.50	16.5	46.0	69.3	81.0	70.4	43.8	11.8			
115	0.10	6.20	31.2	55.2	66.8	58.2	39.3	15.7	6.76	14.0	39.4	61.3	72.1	62.2	37.4	9.04			
120	0.11	4.29	25.8	47.3	57.6	50.1	31.8	12.6	6.15	9.78	32.4	52.7	62.6	53.5	31.2	6.39			
125	0.13	2.42	20.8	39.5	48.6	41.8	26.0	8.83	5.34	6.81	25.9	44.2	52.9	45.0	25.3	3.76			
130	0.16	0.70	16.3	32.2	39.9	34.1	20.9	6.45	5.00	4.30	20.2	35.9	43.5	36.7	19.7	1.34			
135	0.19	0.25	12.0	25.3	31.7	27.0	15.8	3.65	3.92	3.72	14.5	27.9	34.5	28.8	14.5	0.24			
140	0.24	0.27	7.87	18.9	24.2	20.4	10.9	2.89	3.39	2.87	9.00	20.2	25.8	21.4	9.53	0.20			
145	0.30	0.32	3.93	12.9	17.1	14.0	6.39	2.46	2.50	2.53	3.35	12.5	17.5	14.6	5.25	0.19			
150	0.35	0.36	0.57	7.21	10.5	8.15	2.26	1.93	2.23	1.91	1.37	5.19	9.61	8.06	1.54	0.21			
155	0.40	0.40	0.44	2.01	4.36	2.76	0.95	1.57	1.52	1.41	1.07	0.61	2.51	2.17	0.30	0.24			
160	0.44	0.43	0.46	0.48	0.58	0.70	0.78	1.13	1.13	1.09	0.83	0.56	0.50	0.41	0.32	0.28			
165	0.47	0.44	0.48	0.50	0.58	0.69	0.74	0.79	0.65	0.65	0.61	0.57	0.46	0.42	0.35	0.32			
170	0.39	0.40	0.44	0.48	0.57	0.56	0.69	0.66	0.52	0.52	0.52	0.51	0.39	0.42	0.36	0.32			
175	0.40	0.40	0.43	0.48	0.50	0.39	0.44	0.53	0.45	0.45	0.42	0.35	0.31	0.38	0.43	0.38			
180	0.60	0.52	0.53	0.41	0.34	0.36	0.40	0.45	0.51	0.51	0.51	0.48	0.43	0.36	0.37	0.42			

C Range: 0 - 360DEG
 C Interval: 22.5DEG
 Test Speed: HIGH
 Temperature:25.6DEG
 Operators:Carl
 Test Date:2022-05-30

γ Range: 0 - 180DEG
 γ Interval: 1.0DEG
 Test System:EVERFINE GO-R5000_V2 SYSTEM V2.0.351
 Humidity:39%
 Test Distance:2.526m [K=1.0000]
 Remarks: