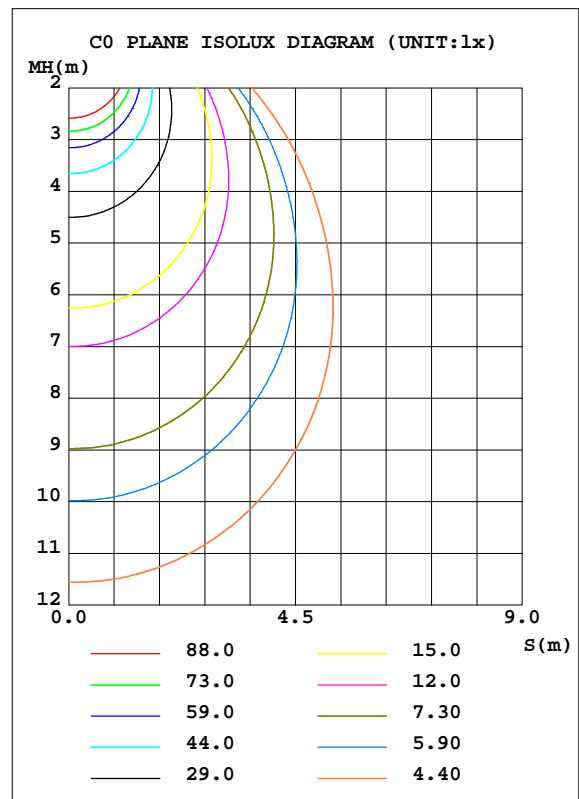
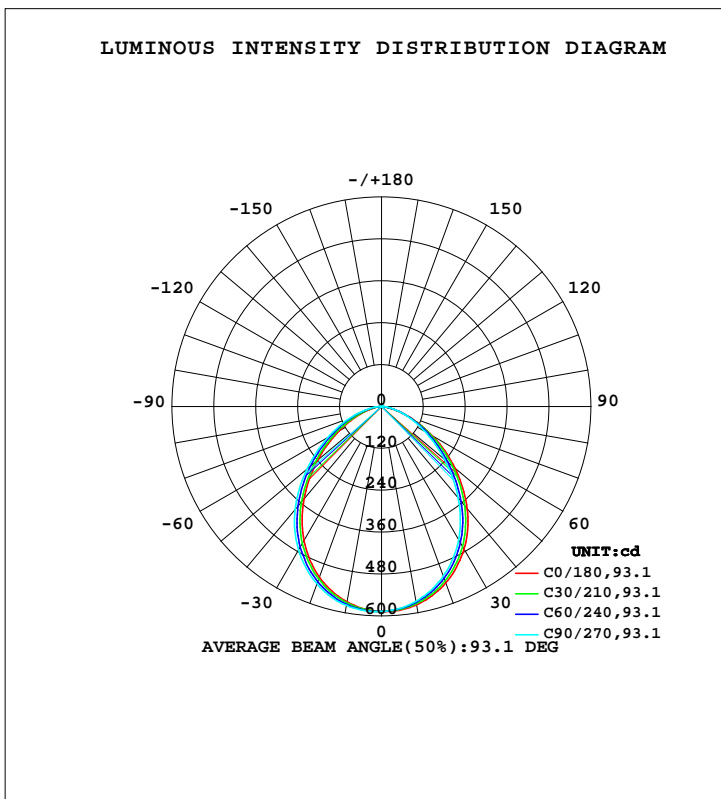


LUMINAIRE PHOTOMETRIC TEST REPORT

NAME:	TYPE:	WEIGHT:
SPEC.:	DIM.:	SERIAL No.:
MFR.: ASD LIGHTING CORP	SUR.: 0.175*0.175	Shielding Angle:

DATA OF LAMP		PHOTOMETRIC DATA			
ASD HIRK-GBR-6D15CC-WH(4000K)		Imax(cd)	588.3	S/MH(C0/180)	1.14
NOMINAL POWER(W)	15	LOR(%)	100.0	S/MH(C90/270)	1.21
RATED VOLTAGE(V)	120	TOTAL FLUX(lm)	1308.3	h UP, DN(C0-180)	0.5, 48.0
NOMINAL FLUX(lm)	1308.27	CIE CLASS	DIRECT	h UP, DN(C180-360)	0.4, 51.1
LAMPS INSIDE	1	h up(%)	0.9	CIBSE SHR NOM	1.25
TEST VOLTAGE(V)	120.0	h down(%)	99.1	CIBSE SHR MAX	1.30



C Range: 0 - 360DEG  
 C Interval: 30.0DEG  
 Test Speed: HIGH  
 Temperature: 25.3DEG  
 Operators:  
 Test Date: 2021-12-23

g Range: 0 - 180DEG  
 g Interval: 1.0DEG  
 Test System: EVERFINE GO-2000B\_V1 SYSTEM V2.00.426  
 Humidity: 65.0%  
 Test Distance: 8.000m [K=1.0750]  
 Remarks:

ZONAL FLUX DIAGRAM

ZONAL FLUX DIAGRAM:

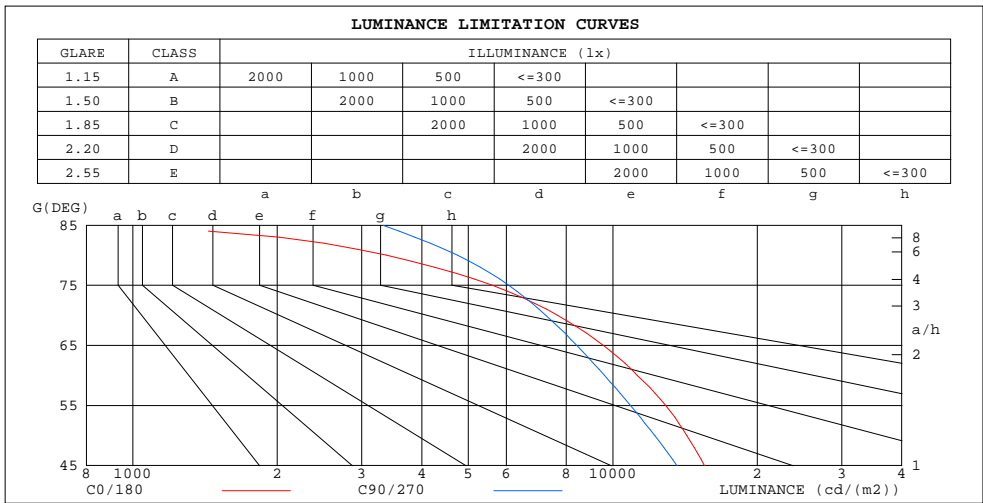
g	C0	C45	C90	C135	C180	C225	C270	C315	g	F zone	F total	%lum,lamp
10	576.9	571.8	566.7	564.4	568.0	573.1	578.3	580.2	0- 10	55.34	55.34	4.23,4.23
20	538.0	527.9	517.2	512.7	520.4	530.4	540.9	544.6	10- 20	156.1	211.4	16.2,16.2
30	472.2	457.8	441.6	434.3	444.6	459.8	475.1	481.6	20- 30	228.4	439.8	33.6,33.6
40	381.9	362.6	341.9	332.7	345.4	364.4	385.2	393.0	30- 40	258.0	697.8	53.3,53.3
50	274.9	256.5	235.8	227.4	238.6	257.2	278.8	287.1	40- 50	239.0	936.8	71.6,71.6
60	168.6	158.6	144.1	136.5	139.7	159.7	177.2	183.3	50- 60	184.6	1121	85.7,85.7
70	78.62	77.89	74.40	65.84	64.60	80.19	95.08	94.27	60- 70	115.9	1237	94.6,94.6
80	17.56	19.92	24.72	17.19	15.62	23.26	33.88	27.08	70- 80	51.02	1288	98.5,98.5
90	0.2709	0.3330	0.3803	0.4259	0.2709	0.2938	0.4475	0.2686	80- 90	8.160	1296	99.1,99.1
100	0.6039	0.7162	0.7811	0.7924	0.6297	0.6006	0.5566	0.5524	90-100	0.5738	1297	99.1,99.1
110	1.112	1.201	1.312	1.324	1.134	1.076	0.9990	0.9515	100-110	0.9553	1298	99.2,99.2
120	1.668	1.770	1.895	1.916	1.701	1.630	1.551	1.483	110-120	1.402	1299	99.3,99.3
130	2.261	2.358	2.520	2.515	2.289	2.199	2.123	2.046	120-130	1.781	1301	99.5,99.5
140	2.828	2.938	3.082	3.068	2.845	2.761	2.696	2.625	130-140	1.985	1303	99.6,99.6
150	3.364	3.445	3.550	3.566	3.375	3.268	3.211	3.151	140-150	1.949	1305	99.8,99.8
160	3.858	3.892	3.961	3.983	3.864	3.752	3.685	3.652	150-160	1.658	1307	99.9,99.9
170	4.243	4.282	4.315	4.324	4.264	4.199	4.148	4.124	160-170	1.138	1308	100,100
180	4.493	4.498	4.461	4.470	4.493	4.498	4.466	4.478	170-180	0.4144	1308	100,100
DEG	LUMINOUS INTENSITY:cd									UNIT:lm		

C Range: 0 - 360DEG  
 C Interval: 30.0DEG  
 Test Speed: HIGH  
 Temperature:25.3DEG  
 Operators:  
 Test Date:2021-12-23

g Range: 0 - 180DEG  
 g Interval: 1.0DEG  
 Test System:EVERFINE GO-2000B\_V1 SYSTEM V2.00.426  
 Humidity:65.0%  
 Test Distance:8.000m [K=1.0750]  
 Remarks:

LUMINANCE LIMITATION CURVES

NAME:	TYPE:	WEIGHT:
SPEC.:	DIM.:	SERIAL No.:
MFR.: ASD LIGHTING CORP	SUR.: 0.175*0.175	Shielding Angle:



LUMINANCE cd/(m2)		
G(DEG)	C0/180	C90/270
85	790	3321
80	3374	4746
75	5609	6065
70	7669	7252
65	9555	8413
60	11249	9610
55	12887	10887
50	14269	12229
45	15520	13603

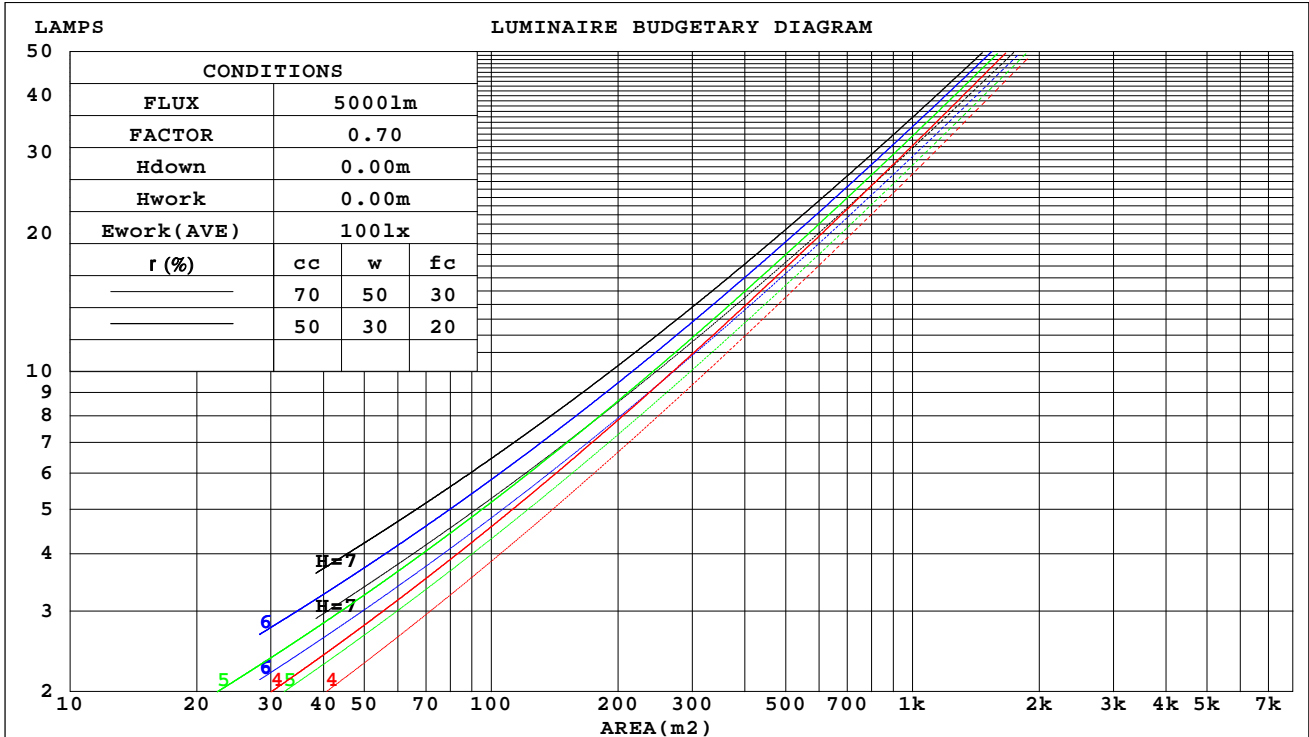
C Range: 0 - 360DEG  
 C Interval: 30.0DEG  
 Test Speed: HIGH  
 Temperature: 25.3DEG  
 Operators:  
 Test Date: 2021-12-23

g Range: 0 - 180DEG  
 g Interval: 1.0DEG  
 Test System: EVERFINE GO-2000B\_V1 SYSTEM V2.00.426  
 Humidity: 65.0%  
 Test Distance: 8.000m [K=1.0750]  
 Remarks:

CU AND LUMINAIRE BUDGETARY ESTIMATE DIAGRAM

NAME:	TYPE:	WEIGHT:
SPEC.:	DIM.:	SERIAL No.:
MFR.: ASD LIGHTING CORP	SUR.: 0.175*0.175	Shielding Angle:

r <sub>cc</sub>	80%			70%			50%			30%			10%			0
r <sub>w</sub>	50%	30%	10%	50%	30%	10%	50%	30%	10%	50%	30%	10%	50%	30%	10%	0
r <sub>fc</sub>	20%			20%			20%			20%			20%			0
RCR	RCR:Room Cavity Ratio						Coefficients of Utilization(CU)									
0.0	1.19	1.19	1.19	1.16	1.16	1.16	1.11	1.11	1.11	1.06	1.06	1.06	1.01	1.01	1.01	.99
1.0	1.06	1.02	.99	1.04	1.00	.97	.99	.96	.94	.95	.93	.91	.91	.90	.88	.86
2.0	.94	.88	.83	.92	.86	.82	.88	.84	.80	.85	.81	.78	.82	.79	.76	.74
3.0	.83	.76	.70	.82	.75	.69	.79	.73	.68	.76	.71	.67	.73	.69	.66	.64
4.0	.75	.67	.60	.73	.66	.60	.71	.64	.59	.68	.63	.58	.66	.61	.57	.55
5.0	.67	.59	.53	.66	.58	.52	.64	.57	.52	.62	.56	.51	.60	.55	.51	.49
6.0	.61	.53	.47	.60	.52	.46	.58	.51	.46	.56	.50	.45	.55	.49	.45	.43
7.0	.56	.47	.42	.55	.47	.41	.53	.46	.41	.52	.45	.41	.50	.45	.40	.38
8.0	.51	.43	.37	.50	.43	.37	.49	.42	.37	.48	.41	.37	.46	.41	.36	.35
9.0	.47	.39	.34	.46	.39	.34	.45	.38	.34	.44	.38	.33	.43	.37	.33	.31
10.0	.43	.36	.31	.43	.36	.31	.42	.35	.31	.41	.35	.30	.40	.34	.30	.29



C Range: 0 - 360DEG  
 C Interval: 30.0DEG  
 Test Speed: HIGH  
 Temperature:25.3DEG  
 Operators:  
 Test Date:2021-12-23

g Range: 0 - 180DEG  
 g Interval: 1.0DEG  
 Test System:EVERFINE GO-2000B\_V1 SYSTEM V2.00.426  
 Humidity:65.0%  
 Test Distance:8.000m [K=1.0750]  
 Remarks:

WEC AND CCEC

NAME:	TYPE:	WEIGHT:
SPEC.:	DIM.:	SERIAL No.:
MFR.: ASD LIGHTING CORP	SUR.: 0.175*0.175	Shielding Angle:

rcc	80%			70%			50%			30%			10%			0
rw	50%	30%	10%	50%	30%	10%	50%	30%	10%	50%	30%	10%	50%	30%	10%	0
rfc	20%			20%			20%			20%			20%			0
RCR	RCR:Room Cavity Ratio						Wall Exitance Coefficients(WEC)									
0.0																
1.0	.267	.152	.048	.260	.148	.047	.246	.141	.045	.234	.135	.043	.223	.129	.042	
2.0	.258	.141	.043	.251	.138	.043	.240	.133	.041	.229	.128	.040	.218	.124	.039	
3.0	.243	.129	.039	.237	.127	.038	.227	.123	.037	.217	.119	.036	.208	.115	.036	
4.0	.227	.118	.035	.222	.116	.034	.213	.113	.034	.204	.110	.033	.196	.107	.032	
5.0	.212	.108	.031	.208	.107	.031	.200	.104	.031	.192	.101	.030	.185	.099	.030	
6.0	.198	.099	.028	.195	.098	.028	.187	.096	.028	.180	.094	.028	.174	.092	.027	
7.0	.186	.092	.026	.183	.091	.026	.176	.089	.026	.170	.087	.025	.164	.085	.025	
8.0	.175	.085	.024	.172	.085	.024	.166	.083	.024	.160	.081	.023	.155	.080	.023	
9.0	.165	.080	.022	.162	.079	.022	.157	.077	.022	.152	.076	.022	.147	.075	.022	
10.0	.156	.075	.021	.153	.074	.021	.148	.073	.020	.144	.071	.020	.139	.070	.020	

rcc	80%			70%			50%			30%			10%			0
rw	50%	30%	10%	50%	30%	10%	50%	30%	10%	50%	30%	10%	50%	30%	10%	0
rfc	20%			20%			20%			20%			20%			0
RCR	RCR:Room Cavity Ratio						Ceiling Cavity Exitance Coefficients(CCEC)									
0.0	.197	.197	.197	.169	.169	.169	.115	.115	.115	.066	.066	.066	.021	.021	.021	
1.0	.184	.163	.145	.158	.140	.125	.108	.097	.086	.062	.056	.050	.020	.018	.016	
2.0	.175	.139	.109	.150	.120	.094	.103	.083	.066	.059	.048	.039	.019	.016	.013	
3.0	.166	.121	.085	.143	.105	.074	.098	.073	.052	.057	.042	.031	.018	.014	.010	
4.0	.158	.108	.069	.136	.093	.060	.094	.065	.042	.054	.038	.025	.017	.012	.008	
5.0	.151	.097	.057	.130	.084	.050	.089	.059	.035	.052	.034	.021	.017	.011	.007	
6.0	.144	.088	.048	.124	.077	.042	.086	.054	.030	.050	.032	.018	.016	.010	.006	
7.0	.138	.081	.042	.118	.071	.037	.082	.050	.026	.048	.029	.015	.015	.010	.005	
8.0	.132	.076	.037	.113	.066	.032	.078	.046	.023	.046	.027	.014	.015	.009	.005	
9.0	.126	.071	.033	.108	.061	.029	.075	.043	.021	.044	.025	.012	.014	.008	.004	
10.0	.121	.066	.030	.104	.058	.027	.072	.041	.019	.042	.024	.011	.014	.008	.004	

C Range: 0 - 360DEG  
 C Interval: 30.0DEG  
 Test Speed: HIGH  
 Temperature:25.3DEG  
 Operators:  
 Test Date:2021-12-23

g Range: 0 - 180DEG  
 g Interval: 1.0DEG  
 Test System:EVERFINE GO-2000B\_V1 SYSTEM V2.00.426  
 Humidity:65.0%  
 Test Distance:8.000m [K=1.0750]  
 Remarks:

UGR(Unified Glare Rating) Table

NAME:		TYPE:					WEIGHT:				
SPEC.:		DIM.:					SERIAL No.:				
MFR.: ASD LIGHTING CORP		SUR.: 0.175*0.175					Shielding Angle:				
ceiling/cavity	0.7	0.7	0.5	0.5	0.3	0.7	0.7	0.5	0.5	0.3	
walls	0.5	0.3	0.5	0.3	0.3	0.5	0.3	0.5	0.3	0.3	
working plane	0.2	0.2	0.2	0.2	0.2	0.2	0.2	0.2	0.2	0.2	
Room dimensions	Viewed crosswise					Viewed endwise					
x = 2H y = 2H	20.4	21.8	20.7	22.0	22.2	19.8	21.2	20.1	21.4	21.6	
3H	21.2	22.5	21.5	22.8	23.0	20.7	21.9	21.0	22.2	22.4	
4H	21.4	22.6	21.8	22.9	23.2	21.0	22.2	21.3	22.4	22.7	
6H	21.5	22.6	21.8	22.9	23.2	21.1	22.2	21.4	22.5	22.8	
8H	21.5	22.5	21.8	22.8	23.1	21.1	22.2	21.5	22.5	22.8	
12H	21.4	22.5	21.8	22.8	23.1	21.1	22.2	21.5	22.5	22.8	
4H 2H	20.7	21.9	21.1	22.2	22.5	20.2	21.4	20.6	21.7	22.0	
3H	21.7	22.8	22.1	23.1	23.4	21.3	22.3	21.6	22.6	23.0	
4H	22.0	22.9	22.4	23.3	23.6	21.7	22.6	22.0	22.9	23.3	
6H	22.1	22.9	22.5	23.3	23.7	21.9	22.7	22.3	23.1	23.5	
8H	22.1	22.9	22.5	23.2	23.6	21.9	22.7	22.3	23.1	23.5	
12H	22.0	22.8	22.5	23.2	23.6	21.9	22.7	22.4	23.0	23.5	
8H 4H	22.1	22.8	22.5	23.2	23.6	21.7	22.5	22.2	22.9	23.3	
6H	22.2	22.8	22.7	23.3	23.7	22.0	22.7	22.5	23.1	23.5	
8H	22.2	22.8	22.7	23.2	23.7	22.1	22.7	22.6	23.1	23.6	
12H	22.2	22.7	22.7	23.1	23.6	22.2	22.6	22.6	23.1	23.6	
12H 4H	22.0	22.7	22.5	23.1	23.6	21.7	22.4	22.2	22.8	23.2	
6H	22.2	22.8	22.7	23.2	23.7	22.0	22.6	22.5	23.0	23.5	
8H	22.2	22.7	22.7	23.1	23.6	22.1	22.6	22.6	23.1	23.6	
Variations with the observer position at spacings(CIE Pub.117):											
S = 1.0H	+ 0.3 / - 0.4					+ 0.4 / - 0.5					
1.5H	+ 0.2 / - 0.3					+ 0.1 / - 0.3					
2.0H	+ 0.7 / - 0.7					+ 0.5 / - 0.7					

CIE Pub.117, 1308 lm Total Lamp Luminous Flux Correct (8log(F/F0) = 0.9)  
 Area: 0.03 m2

C Range: 0 - 360DEG  
 C Interval: 30.0DEG  
 Test Speed: HIGH  
 Temperature:25.3DEG  
 Operators:  
 Test Date:2021-12-23

g Range: 0 - 180DEG  
 g Interval: 1.0DEG  
 Test System:EVERFINE GO-2000B\_V1 SYSTEM V2.00.426  
 Humidity:65.0%  
 Test Distance:8.000m [K=1.0750]  
 Remarks:

UTILIZATION FACTORS TABLE

NAME:	TYPE:	WEIGHT:
SPEC.:	DIM.:	SERIAL No.:
MFR.: ASD LIGHTING CORP	SUR.: 0.175*0.175	Shielding Angle:

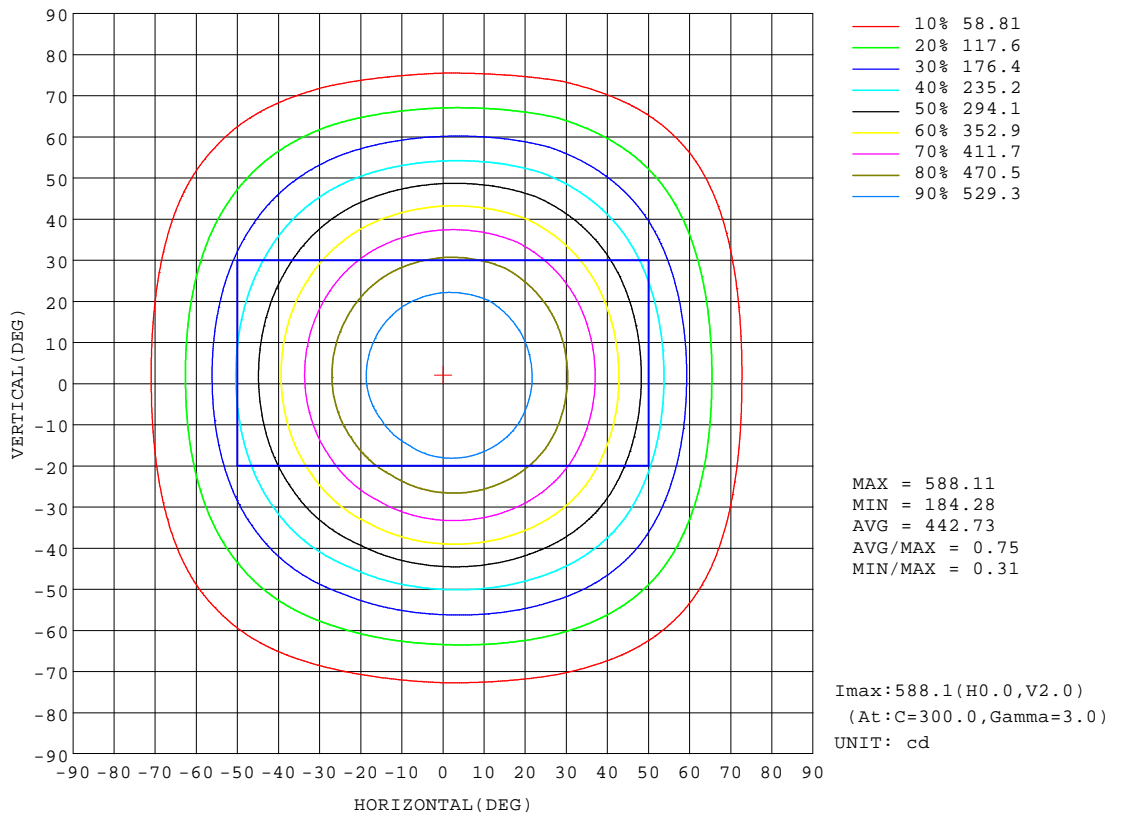
REFLECTANCE										
Ceiling	0.8	0.8	0.8	0.7	0.7	0.7	0.5	0.5	0.5	0
Walls	0.7	0.5	0.3	0.7	0.5	0.3	0.7	0.5	0.3	0
Working plane	0.2	0.2	0.2	0.2	0.2	0.2	0.2	0.2	0.2	0
ROOM INDEX	UTILIZATION FACTORS(PERCENT) $k(RI) \times RCR = 5$									
k = 0.60	62	52	45	62	51	45	60	51	45	39
0.80	72	62	55	71	62	55	70	61	55	48
1.00	81	71	64	80	70	64	77	71	63	57
1.25	87	78	72	86	77	71	83	76	71	64
1.50	92	83	77	90	83	77	88	81	76	69
2.00	98	91	85	96	90	84	93	87	83	75
2.50	102	95	90	100	93	89	96	91	87	79
3.00	105	99	94	102	97	93	98	94	90	82
4.00	108	103	99	106	101	98	101	98	95	86
5.00	110	106	103	108	104	101	103	100	98	89
ROOM INDEX	UF(total)									Direct
According to DIN EN 13032-2 2004			Suspended				SHRNOM = 1.25			

C Range: 0 - 360DEG  
 C Interval: 30.0DEG  
 Test Speed: HIGH  
 Temperature: 25.3DEG  
 Operators:  
 Test Date: 2021-12-23

g Range: 0 - 180DEG  
 g Interval: 1.0DEG  
 Test System: EVERFINE GO-2000B\_V1 SYSTEM V2.00.426  
 Humidity: 65.0%  
 Test Distance: 8.000m [K=1.0750]  
 Remarks:

ISOCANDELA DIAGRAM

NAME:	TYPE:	WEIGHT:
SPEC.:	DIM.:	SERIAL No.:
MFR.: ASD LIGHTING CORP	SUR.: 0.175*0.175	Shielding Angle:



C Range: 0 - 360DEG  
 C Interval: 30.0DEG  
 Test Speed: HIGH  
 Temperature: 25.3DEG  
 Operators:  
 Test Date: 2021-12-23

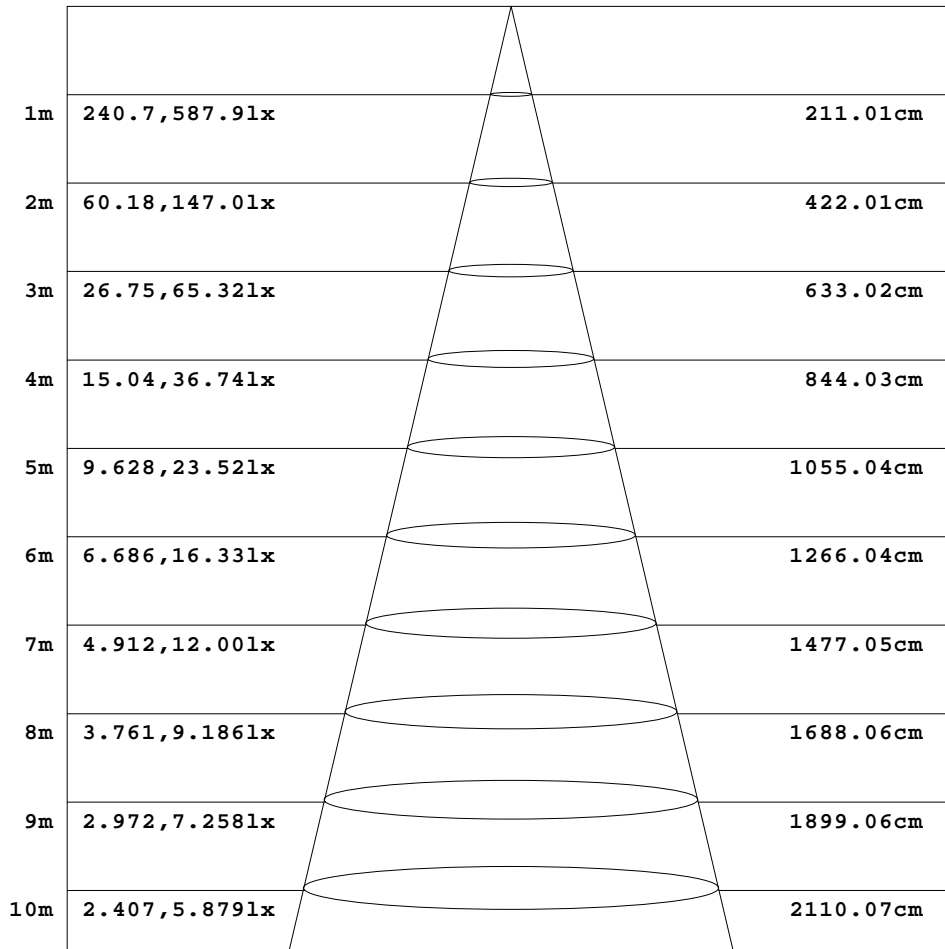
g Range: 0 - 180DEG  
 g Interval: 1.0DEG  
 Test System: EVERFINE GO-2000B\_V1 SYSTEM V2.00.426  
 Humidity: 65.0%  
 Test Distance: 8.000m [K=1.0750]  
 Remarks:



**AAI Figure**

NAME:	TYPE:	WEIGHT:
SPEC.:	DIM.:	SERIAL No.:
MFR.: ASD LIGHTING CORP	SUR.: 0.175*0.175	Shielding Angle:

Flux out:869.6 lm



Height                      Eavg, Emax                      Angle:93.07deg                      Diameter

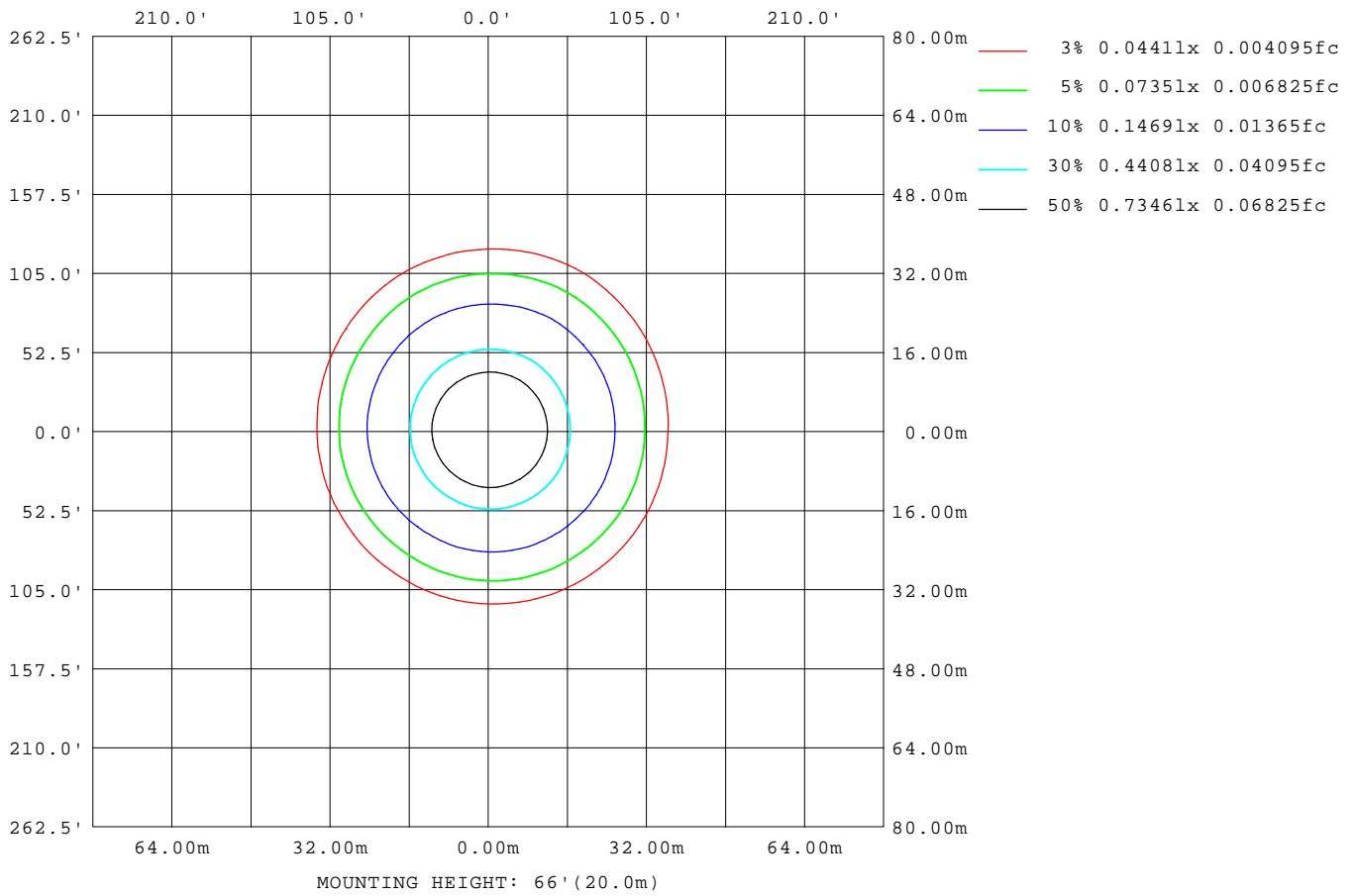
Note:The Curves indicate the illuminated area and the average illumination when the luminaire is at different distance.

C Range: 0 - 360DEG  
 C Interval: 30.0DEG  
 Test Speed: HIGH  
 Temperature:25.3DEG  
 Operators:  
 Test Date:2021-12-23

g Range: 0 - 180DEG  
 g Interval: 1.0DEG  
 Test System:EVERFINE GO-2000B\_V1 SYSTEM V2.00.426  
 Humidity:65.0%  
 Test Distance:8.000m [K=1.0750]  
 Remarks:

**ISOLUX DIAGRAM**

<b>NAME:</b>	<b>TYPE:</b>	<b>WEIGHT:</b>
<b>SPEC.:</b>	<b>DIM.:</b>	<b>SERIAL No.:</b>
<b>MFR.: ASD LIGHTING CORP</b>	<b>SUR.: 0.175*0.175</b>	<b>Shielding Angle:</b>



**C Range: 0 - 360DEG**  
**C Interval: 30.0DEG**  
**Test Speed: HIGH**  
**Temperature: 25.3DEG**  
**Operators:**  
**Test Date: 2021-12-23**

**g Range: 0 - 180DEG**  
**g Interval: 1.0DEG**  
**Test System: EVERFINE GO-2000B\_V1 SYSTEM V2.00.426**  
**Humidity: 65.0%**  
**Test Distance: 8.000m [K=1.0750]**  
**Remarks:**

LED Avg.L Report

NAME:	TYPE:	WEIGHT:
SPEC.:	DIM.:	SERIAL No.:
MFR.: ASD LIGHTING CORP	SUR.: 0.175*0.175	Shielding Angle:

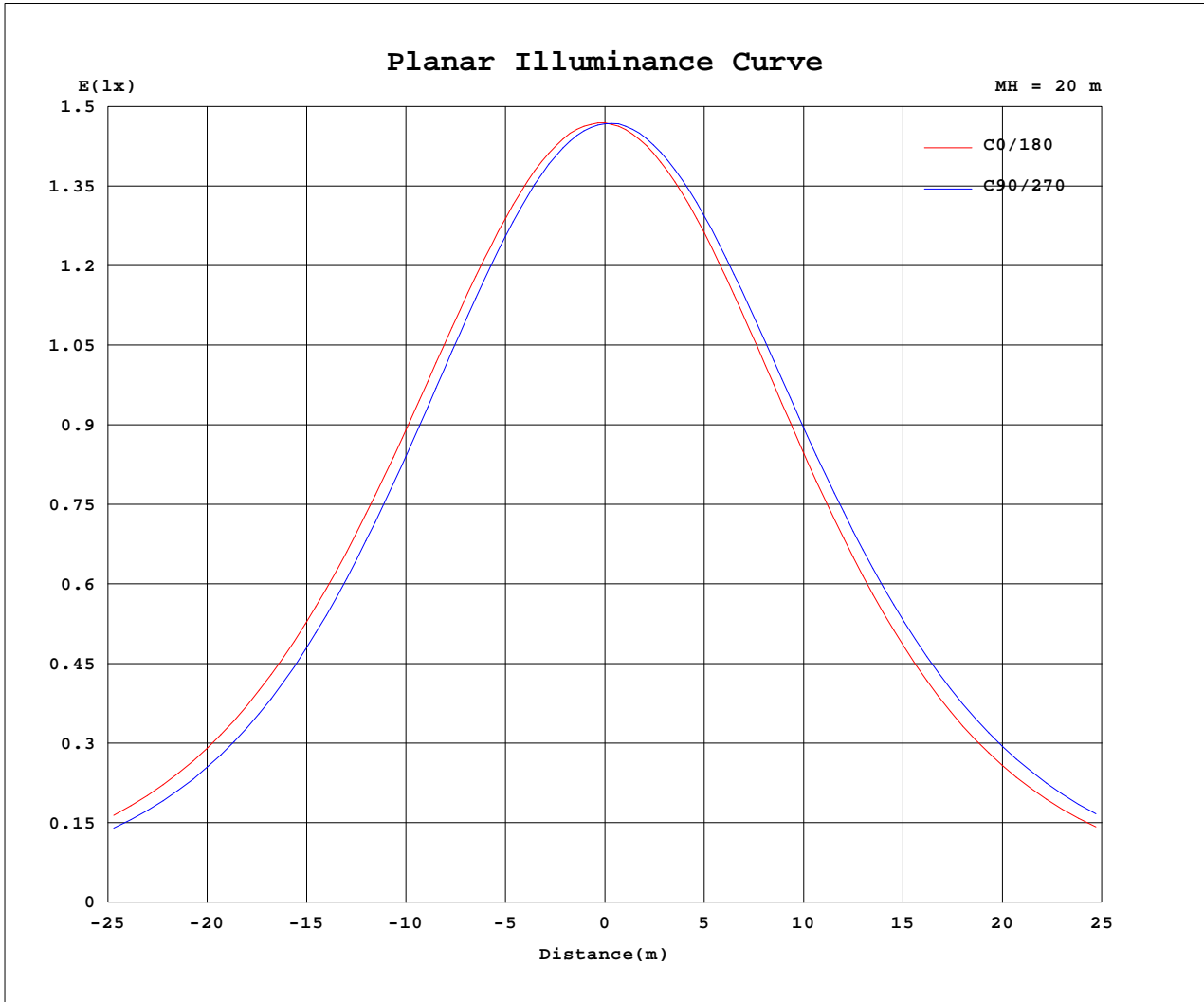
AvgL	cd/m2
L_0~180(65)av	8674
L_0~180(75)av	5154
L_0~180(85)av	708
L_90~270(65)av	9487
L_90~270(75)av	6999
L_90~270(85)av	4135
L_45(65)av	9254
L_45(75)av	6109
L_45(85)av	1751

Standard: GB/T 29293-2012

C Range: 0 - 360DEG  
 C Interval: 30.0DEG  
 Test Speed: HIGH  
 Temperature:25.3DEG  
 Operators:  
 Test Date:2021-12-23

g Range: 0 - 180DEG  
 g Interval: 1.0DEG  
 Test System:EVERFINE GO-2000B\_V1 SYSTEM V2.00.426  
 Humidity:65.0%  
 Test Distance:8.000m [K=1.0750]  
 Remarks:

**Planar Illuminance Curve**



C Range: 0 - 360DEG  
 C Interval: 30.0DEG  
 Test Speed: HIGH  
 Temperature: 25.3DEG  
 Operators:  
 Test Date: 2021-12-23

g Range: 0 - 180DEG  
 g Interval: 1.0DEG  
 Test System: EVERFINE GO-2000B\_V1 SYSTEM V2.00.426  
 Humidity: 65.0%  
 Test Distance: 8.000m [K=1.0750]  
 Remarks:

LUMINOUS DISTRIBUTION INTENSITY DATA

NAME:	TYPE:	WEIGHT:
SPEC.:	DIM.:	SERIAL No.:
MFR.: ASD LIGHTING CORP	SUR.: 0.175*0.175	Shielding Angle:

Table--1

UNIT: cd

C(DEG) g (DEG)	0	30	60	90	120	150	180	210	240	270	300	330						
0	587	587	587	587	587	587	587	587	587	587	587	587						
5	586	584	582	581	579	580	581	583	585	587	587	587						
10	577	574	570	567	564	565	568	571	575	578	581	580						
15	561	556	550	545	541	543	548	552	558	563	567	565						
20	538	532	524	517	511	514	520	526	534	541	546	543						
25	508	501	491	482	474	477	486	493	503	511	517	514						
30	472	464	452	442	433	436	445	454	466	475	483	480						
35	430	420	406	394	384	387	397	408	422	433	442	439						
40	382	371	354	342	331	334	345	357	372	385	395	391						
45	329	319	301	289	277	281	292	302	320	333	343	338						
50	275	265	248	236	225	230	239	248	266	279	290	284						
55	222	213	198	187	178	181	187	198	215	226	237	232						
60	169	163	154	144	137	136	140	152	168	177	186	180						
65	121	118	114	107	100	96.8	98.9	109	125	134	141	133						
70	78.6	77.7	78.1	74.4	68.1	63.6	64.6	72.8	87.6	95.1	99.2	89.3						
75	43.5	43.5	47.3	47.1	40.9	36.0	36.5	42.3	54.8	61.6	62.8	51.6						
80	17.6	17.6	22.2	24.7	19.0	15.3	15.6	18.8	27.7	33.9	32.1	22.0						
85	2.06	1.97	5.24	8.68	3.94	1.55	1.64	3.26	8.23	12.9	9.77	4.23						
90	0.27	0.30	0.36	0.38	0.48	0.37	0.27	0.29	0.30	0.45	0.29	0.25						
95	0.45	0.56	0.52	0.57	0.60	0.73	0.63	0.62	0.40	0.38	0.34	0.35						
100	0.60	0.69	0.74	0.78	0.81	0.78	0.63	0.62	0.58	0.56	0.59	0.51						
105	0.96	0.99	0.98	1.04	1.07	1.03	0.88	0.84	0.80	0.76	0.72	0.76						
110	1.11	1.15	1.25	1.31	1.35	1.30	1.13	1.10	1.06	1.00	0.95	0.95						
115	1.38	1.44	1.53	1.61	1.65	1.59	1.42	1.37	1.32	1.26	1.21	1.20						
120	1.67	1.72	1.82	1.90	1.94	1.89	1.70	1.66	1.60	1.55	1.49	1.48						
125	1.95	2.01	2.12	2.21	2.25	2.20	1.99	1.94	1.88	1.83	1.76	1.76						
130	2.26	2.30	2.41	2.52	2.54	2.49	2.29	2.23	2.17	2.12	2.04	2.05						
135	2.56	2.59	2.70	2.81	2.82	2.78	2.58	2.52	2.45	2.41	2.33	2.33						
140	2.83	2.89	2.99	3.08	3.08	3.05	2.85	2.80	2.73	2.70	2.63	2.62						
145	3.11	3.15	3.25	3.32	3.34	3.31	3.12	3.05	2.98	2.96	2.89	2.89						
150	3.36	3.41	3.48	3.55	3.57	3.56	3.38	3.30	3.24	3.21	3.14	3.16						
155	3.63	3.65	3.70	3.76	3.77	3.78	3.61	3.56	3.46	3.45	3.39	3.43						
160	3.86	3.87	3.91	3.96	3.98	3.99	3.86	3.79	3.71	3.68	3.63	3.67						
165	4.08	4.07	4.12	4.16	4.16	4.16	4.07	4.01	3.95	3.92	3.89	3.91						
170	4.24	4.25	4.32	4.32	4.31	4.34	4.26	4.24	4.16	4.15	4.13	4.12						
175	4.38	4.43	4.46	4.43	4.43	4.44	4.40	4.40	4.35	4.34	4.34	4.32						
180	4.49	4.50	4.49	4.46	4.47	4.47	4.49	4.50	4.49	4.47	4.48	4.48						

C Range: 0 - 360DEG  
 C Interval: 30.0DEG  
 Test Speed: HIGH  
 Temperature:25.3DEG  
 Operators:  
 Test Date:2021-12-23

g Range: 0 - 180DEG  
 g Interval: 1.0DEG  
 Test System:EVERFINE GO-2000B\_V1 SYSTEM V2.00.426  
 Humidity:65.0%  
 Test Distance:8.000m [K=1.0750]  
 Remarks: