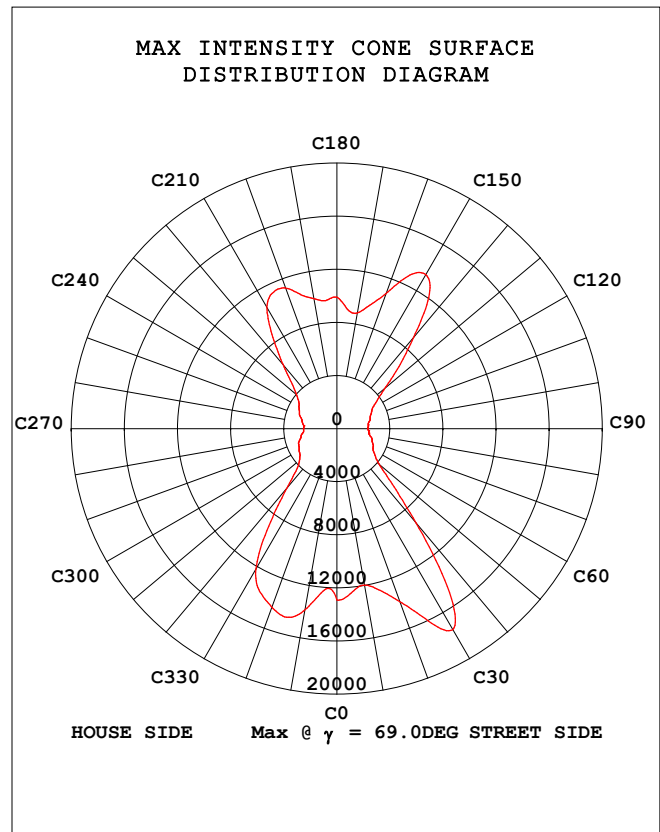
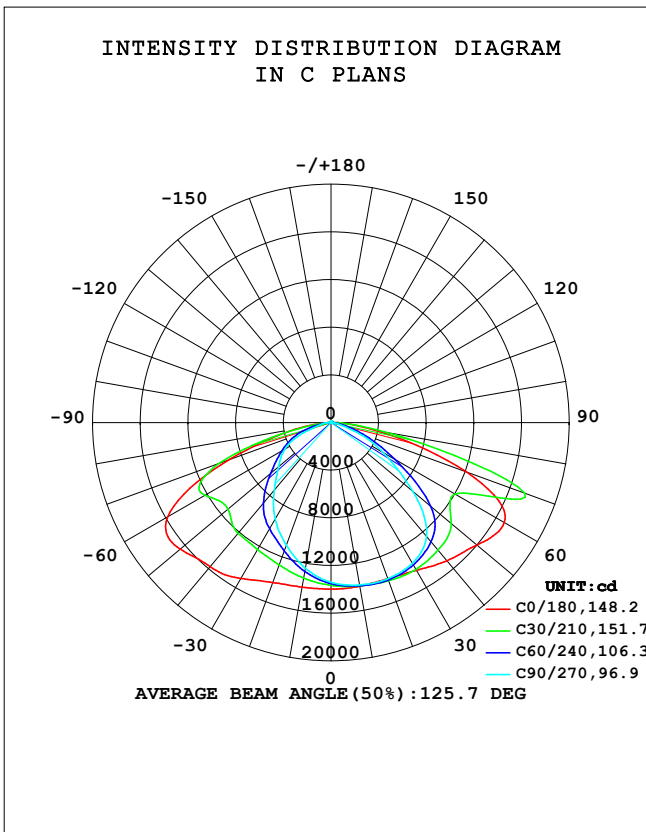


**STREETLIGHT PHOTOMETRIC TEST REPORT**

Test:U:122.26V I:2.4605A P:292.76W PF:0.9732 Freq:50.03Hz Lamp Flux:51004.6x1 lm		
NAME: ASD-LSB5B-PRO-300BR	TYPE:	WEIGHT:
SPEC.: 300W 5000K	DIM.:	SERIAL No.:
MFR.: ASD LIGHTING CORP	SUR.:	Shielding Angle:

DATA OF LAMP		PHOTOMETRIC DATA Eff: 174.22 lm/W			
MODEL	ASD-LSB5B-PRO-300BR	I <sub>max</sub> (cd)	17476	η street_up (%)	0.4
NOMINAL POWER (W)	300	LOR (%)	100.0	η street_down (%)	53.4
RATED VOLTAGE (V)	120	TOTAL FLUX (lm)	51005	η house_up (%)	0.6
NOMINAL FLUX (lm)	51004.6	MAXIMUM @ (C, γ )	30,69.0	η house_down (%)	45.6
LAMPS INSIDE	1	η up (%)	1.0	76 FLASHAREA (m2)	
TEST VOLTAGE (V)	120	η down (%)	99.0	SLI	

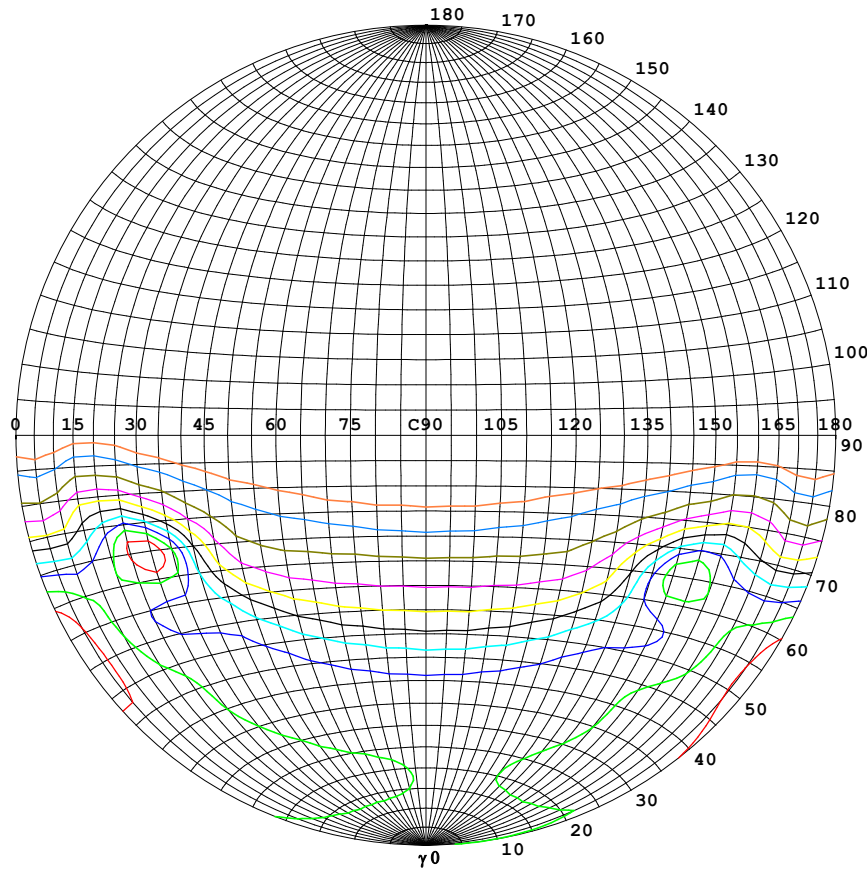


C Range: 0 - 360DEG  
C Interval: 5.0DEG  
Test Speed: HIGH  
Temperature:25.3DEG  
Operators:S  
Test Date:2024-5-30

γ Range: 0 - 180DEG  
γ Interval: 1.0DEG  
Test System:EVERFINE GO-2000B\_V1 SYSTEM V2.00.446  
Humidity:65.0%  
Test Distance:7.850m [K=1.0000]  
Remarks:

**STREETLIGHT ISOCANDELA DIAGRAM**

Test:U:122.26V I:2.4605A P:292.76W PF:0.9732 Freq:50.03Hz Lamp Flux:51004.6x1 lm		
NAME: ASD-LSB5B-PRO-300BR	TYPE:	WEIGHT:
SPEC.: 300W 5000K	DIM.:	SERIAL No.:
MFR.: ASD LIGHTING CORP	SUR.:	Shielding Angle:



**Classification:**

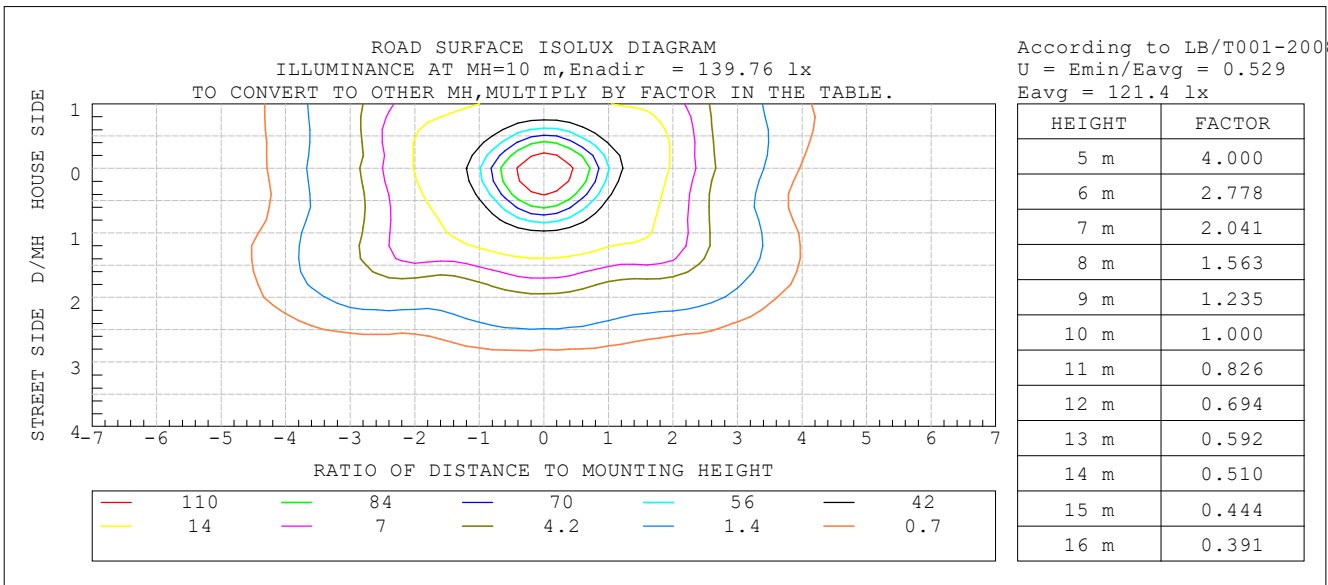
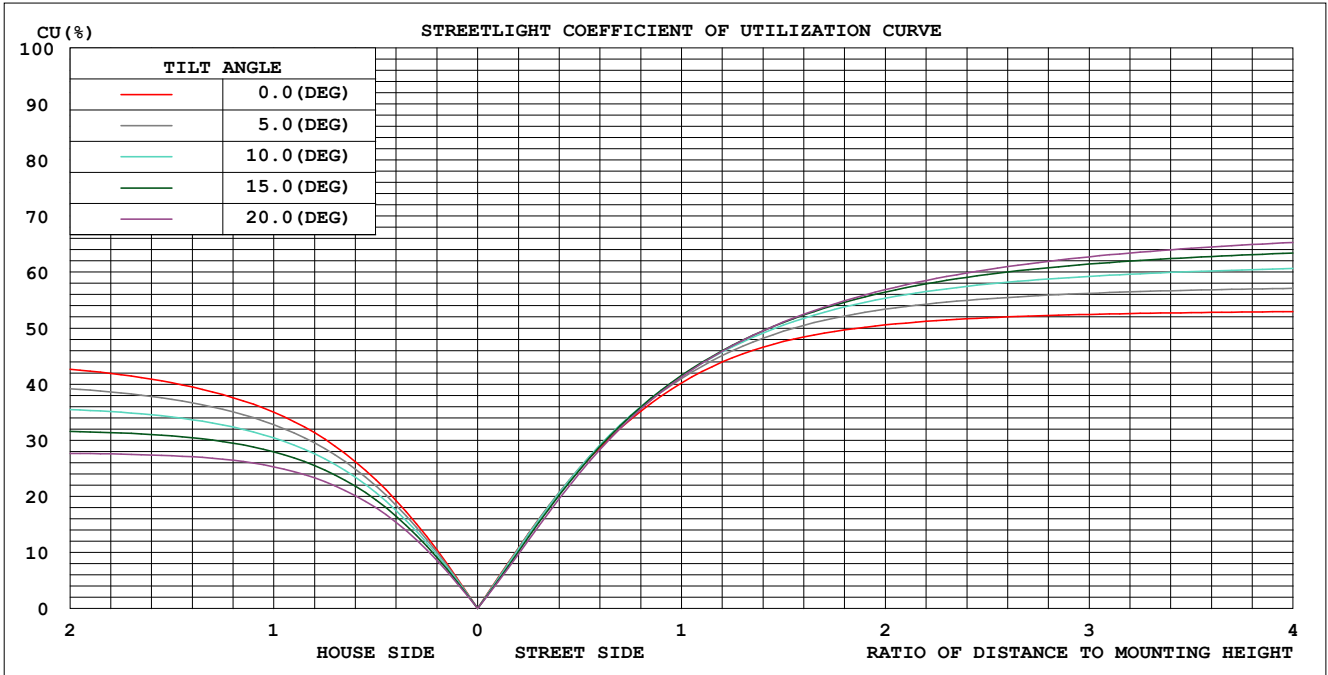
IES:Type III - Medium  
 CIE:Broad - Intermediate  
 IES:Semi cut-off  
 CIE:Non-cut-off  
 Max.At80:124.5cd/klm  
 Max.At90:15.06cd/klm  
 Max.80-90:124.5cd/klm  
 NRB 5101:Semi limited[10.3%]

ISOCANDELA DIAGRAM	
UNIT	cd
I <sub>max</sub> =100%	17476
90%	15728
80%	13981
70%	12233
60%	10486
50%	8738
40%	6990
30%	5243
20%	3495
10%	1748
5%	874

C Range: 0 - 360DEG  
 C Interval: 5.0DEG  
 Test Speed: HIGH  
 Temperature:25.3DEG  
 Operators:S  
 Test Date:2024-5-30

gamma Range: 0 - 180DEG  
 gamma Interval: 1.0DEG  
 Test System:EVERFINE GO-2000B\_V1 SYSTEM V2.00.446  
 Humidity:65.0%  
 Test Distance:7.850m [K=1.0000]  
 Remarks:

**COEFFICIENT OF UTILIZATION CURVE  
AND ISOLUX DIAGRAM**



C Range: 0 - 360DEG  
 C Interval: 5.0DEG  
 Test Speed: HIGH  
 Temperature: 25.3DEG  
 Operators: S  
 Test Date: 2024-5-30

$\gamma$  Range: 0 - 180DEG  
 $\gamma$  Interval: 1.0DEG  
 Test System: EVERFINE GO-2000B\_V1 SYSTEM V2.00.446  
 Humidity: 65.0%  
 Test Distance: 7.850m [K=1.0000]  
 Remarks:

ZONAL FLUX DIAGRAM

Test:U:122.26V I:2.4605A P:292.76W PF:0.9732 Freq:50.03Hz Lamp Flux:51004.6x1 lm		
NAME: ASD-LSB5B-PRO-300BR	TYPE:	WEIGHT:
SPEC.: 300W 5000K	DIM.:	SERIAL No.:
MFR.: ASD LIGHTING CORP	SUR.:	Shielding Angle:

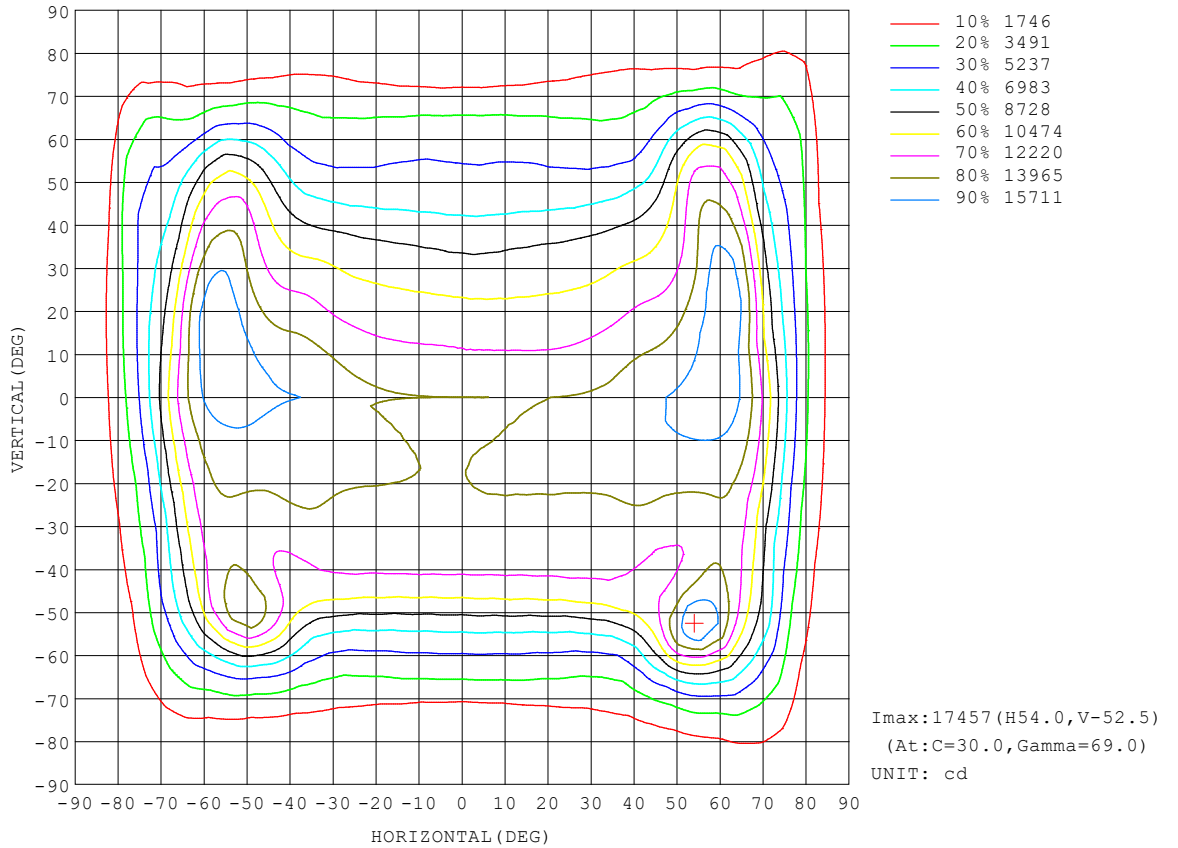
γ	C0	C45	C90	C135	C180	C225	C270	C315	γ	Φ zone	Φ total	lum, lamp
10	1394	1391	1384	1376	1402	1293	1241	1272	0- 10	1283	1283	2.52,2.52
20	1396	1411	1394	1403	1429	1199	1097	1171	10- 20	3741	5024	9.85,9.85
30	1433	1398	1365	1388	1511	1106	937.9	1070	20- 30	5953	10978	21.5,21.5
40	1514	1342	1247	1335	1578	1020	742.8	979.1	30- 40	7809	18786	36.8,36.8
50	1600	1258	896.0	1223	1652	848.4	574.9	831.0	40- 50	8929	27716	54.3,54.3
60	1679	996.6	510.1	1005	1583	635.1	447.4	603.9	50- 60	8994	36710	72,72
70	1207	558.6	197.3	604.6	906.0	454.9	226.1	409.2	60- 70	8238	44948	88.1,88.1
80	374.9	174.3	43.41	133.8	260.9	137.3	73.82	177.4	70- 80	4570	49518	97.1,97.1
90	20.04	2.889	1.081	2.466	5.731	5.089	2.160	9.585	80- 90	985.5	50504	99,99
100	6.475	3.532	1.979	3.989	8.843	5.823	3.021	5.440	90-100	47.65	50551	99.1,99.1
110	9.226	5.316	3.193	5.739	11.21	7.766	4.972	7.351	100-110	60.97	50612	99.2,99.2
120	10.83	6.987	4.613	7.186	12.21	9.566	7.290	9.295	110-120	75.38	50688	99.4,99.4
130	11.20	8.364	6.072	7.809	12.17	10.37	9.348	10.93	120-130	80.86	50768	99.5,99.5
140	10.87	9.218	7.359	8.248	11.79	10.91	10.74	11.70	130-140	75.96	50844	99.7,99.7
150	11.14	9.988	8.585	8.937	12.03	11.49	11.34	12.05	140-150	65.08	50909	99.8,99.8
160	11.87	10.90	9.772	9.848	12.54	11.86	11.83	12.30	150-160	50.65	50960	99.9,99.9
170	12.84	11.80	10.93	11.03	13.12	12.20	12.08	12.35	160-170	32.93	50993	100,100
180	13.35	12.30	11.84	12.08	13.41	12.28	11.85	12.08	170-180	11.56	51005	100,100
DEG	LUMINOUS INTENSITY:X10cd									UNIT:lm		

C Range: 0 - 360DEG  
 C Interval: 5.0DEG  
 Test Speed: HIGH  
 Temperature:25.3DEG  
 Operators:S  
 Test Date:2024-5-30

γ Range: 0 - 180DEG  
 γ Interval: 1.0DEG  
 Test System:EVERFINE GO-2000B\_V1 SYSTEM V2.00.446  
 Humidity:65.0%  
 Test Distance:7.850m [K=1.0000]  
 Remarks:

**ISOCANDELA DIAGRAM**

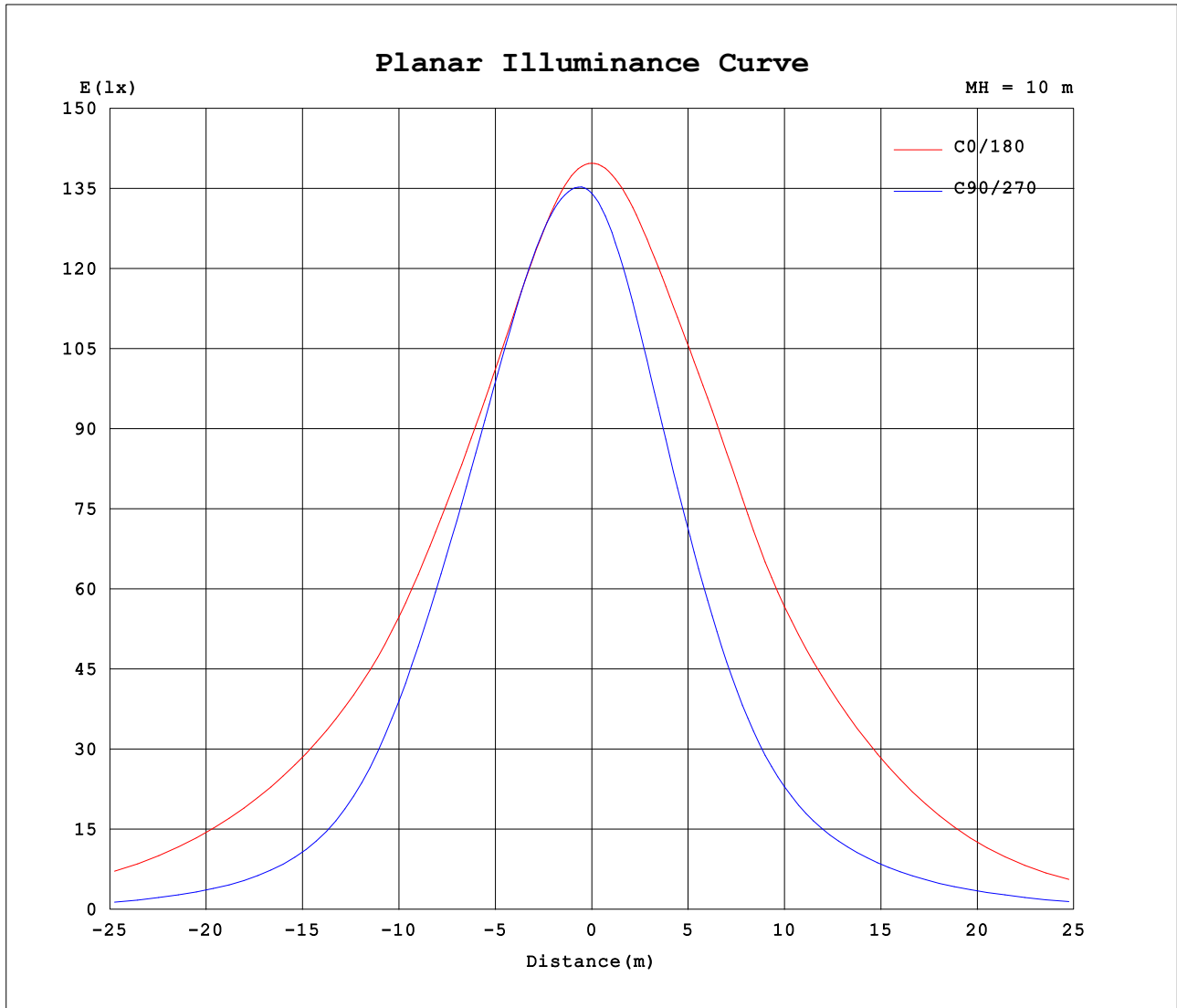
Test:U:122.26V I:2.4605A P:292.76W PF:0.9732 Freq:50.03Hz Lamp Flux:51004.6x1 lm		
NAME: ASD-LSB5B-PRO-300BR	TYPE:	WEIGHT:
SPEC.: 300W 5000K	DIM.:	SERIAL No.:
MFR.: ASD LIGHTING CORP	SUR.:	Shielding Angle:



C Range: 0 - 360DEG  
 C Interval: 5.0DEG  
 Test Speed: HIGH  
 Temperature:25.3DEG  
 Operators:S  
 Test Date:2024-5-30

γ Range: 0 - 180DEG  
 γ Interval: 1.0DEG  
 Test System:EVERFINE GO-2000B\_V1 SYSTEM V2.00.446  
 Humidity:65.0%  
 Test Distance:7.850m [K=1.0000]  
 Remarks:

**Planar Illuminance Curve**



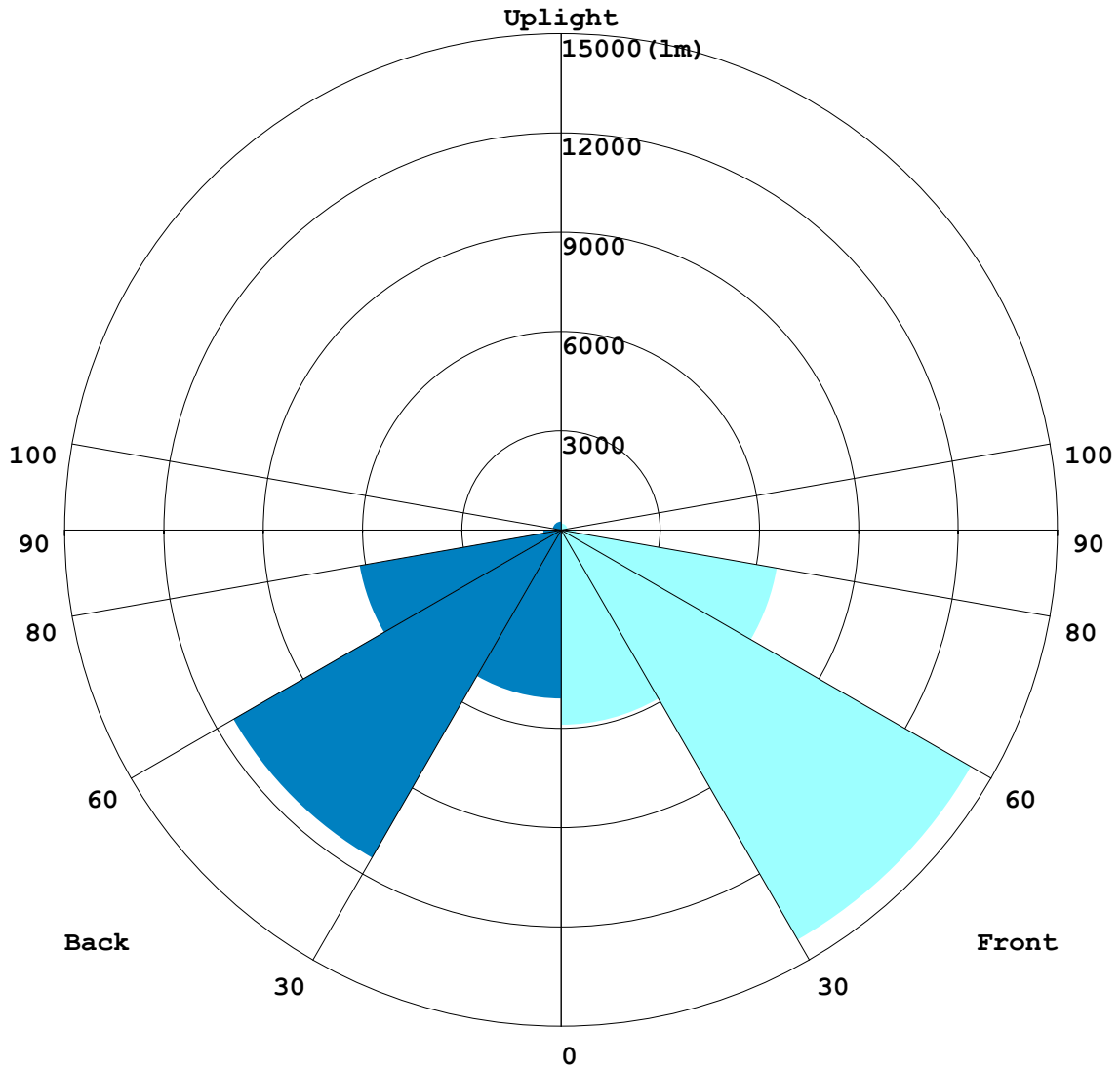
C Range: 0 - 360DEG  
 C Interval: 5.0DEG  
 Test Speed: HIGH  
 Temperature: 25.3DEG  
 Operators: S  
 Test Date: 2024-5-30

γ Range: 0 - 180DEG  
 γ Interval: 1.0DEG  
 Test System: EVERFINE GO-2000B\_V1 SYSTEM V2.00.446  
 Humidity: 65.0%  
 Test Distance: 7.850m [K=1.0000]  
 Remarks:

**LCS REPORT**

Test:U:122.26V I:2.4605A P:292.76W PF:0.9732 Freq:50.03Hz		
Lamp Flux:51004.6x1 lm		
NAME: ASD-LSB5B-PRO-300BR	TYPE:	WEIGHT:
SPEC.: 300W 5000K	DIM.:	SERIAL No.:
MFR.: ASD LIGHTING CORP	SUR.:	Shielding Angle:

**LUMINAIRE CLASSIFICATION SYSTEM(LCS) GRAPH**



C Range: 0 - 360DEG  
 C Interval: 5.0DEG  
 Test Speed: HIGH  
 Temperature:25.3DEG  
 Operators:S  
 Test Date:2024-5-30

γ Range: 0 - 180DEG  
 γ Interval: 1.0DEG  
 Test System:EVERFINE GO-2000B\_V1 SYSTEM V2.00.446  
 Humidity:65.0%  
 Test Distance:7.850m [K=1.0000]  
 Remarks:

**BUG REPORT**

Test:U:122.26V I:2.4605A P:292.76W PF:0.9732 Freq:50.03Hz Lamp Flux:51004.6x1 lm		
NAME: ASD-LSB5B-PRO-300BR	TYPE:	WEIGHT:
SPEC.: 300W 5000K	DIM.:	SERIAL No.:
MFR.: ASD LIGHTING CORP	SUR.:	Shielding Angle:

**IESNA Luminaire Flux Distribution Table:**

Zone	Lumens	Luminaire %
FL - Front-Low(0-30)	5884.6	11.5
FM - Front-Medium(30-60)	14297	28.0
FH - Front-High(60-80)	6626.2	13.0
FVH - Front-Very High(80-90)	449.05	0.9
<b>Total Forward Light</b>	<b>27476</b>	<b>53.9</b>

BL - Back-Low(0-30)	5093.2	10.0
BM - Back-Medium(30-60)	11435	22.4
BH - Back-High(60-80)	6182.1	12.1
BVH - Back-Very High(80-90)	536.46	1.1
<b>Total Back Light</b>	<b>23528</b>	<b>46.1</b>

UL - Uplight-Low(90-100)	47.651	0.1
UH - Uplight-High(100-180)	453.39	0.9
<b>Total Up Light</b>	<b>501.04</b>	<b>1.0</b>

<b>BUG(Back,Up,Glare) Rating</b>	<b>B5-U3-G5</b>
----------------------------------	-----------------

Zone	Downward Lumens	Upward Lumens	Total Lumens
House Side	23246	281.95	23528
Street Side	27257	219.09	27476

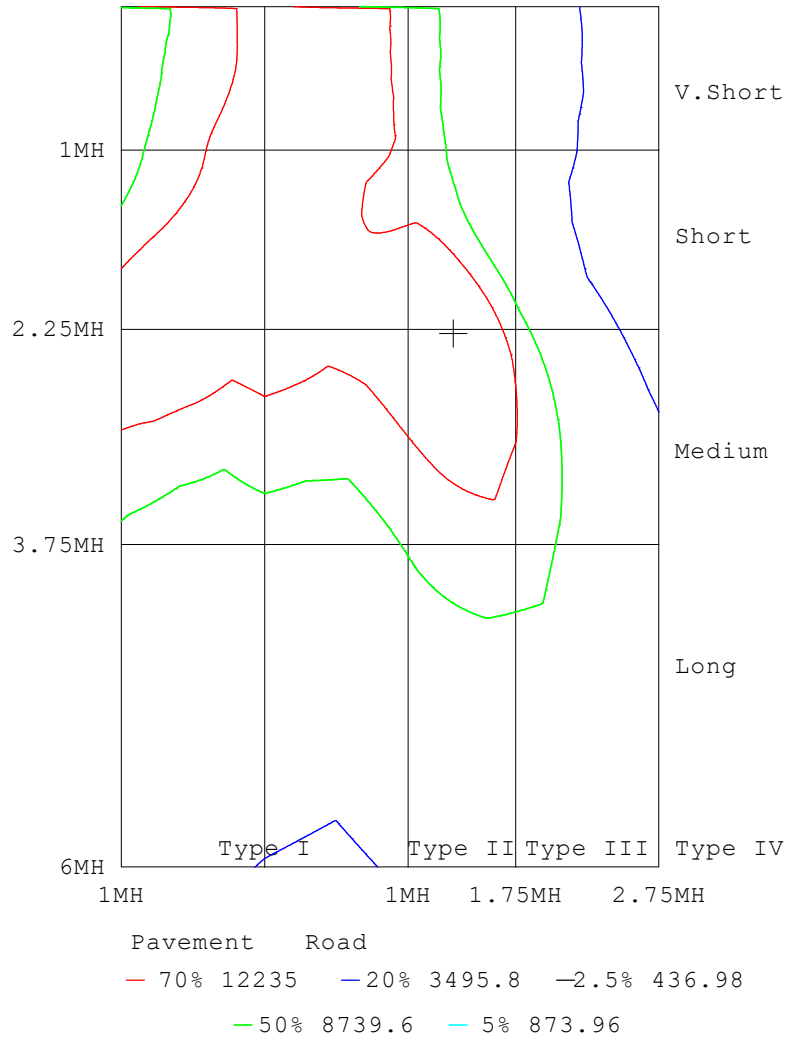
C Range: 0 - 360DEG  
 C Interval: 5.0DEG  
 Test Speed: HIGH  
 Temperature:25.3DEG  
 Operators:S  
 Test Date:2024-5-30

γ Range: 0 - 180DEG  
 γ Interval: 1.0DEG  
 Test System:EVERFINE GO-2000B\_V1 SYSTEM V2.00.446  
 Humidity:65.0%  
 Test Distance:7.850m [K=1.0000]  
 Remarks:

**ROAD ISOCANDELA REPORT**

Test:U:122.26V I:2.4605A P:292.76W PF:0.9732 Freq:50.03Hz Lamp Flux:51004.6x1 lm		
NAME: ASD-LSB5B-PRO-300BR	TYPE:	WEIGHT:
SPEC.: 300W 5000K	DIM.:	SERIAL No.:
MFR.: ASD LIGHTING CORP	SUR.:	Shielding Angle:

ROAD SURFACE ISOCANDELA DIAGRAM



C Range: 0 - 360DEG  
 C Interval: 5.0DEG  
 Test Speed: HIGH  
 Temperature:25.3DEG  
 Operators:S  
 Test Date:2024-5-30

γ Range: 0 - 180DEG  
 γ Interval: 1.0DEG  
 Test System:EVERFINE GO-2000B\_V1 SYSTEM V2.00.446  
 Humidity:65.0%  
 Test Distance:7.850m [K=1.0000]  
 Remarks:

LUMINOUS DISTRIBUTION INTENSITY DATA

Test:U:122.26V I:2.4605A P:292.76W PF:0.9732 Freq:50.03Hz Lamp Flux:51004.6x1 lm		
NAME: ASD-LSB5B-PRO-300BR	TYPE:	WEIGHT:
SPEC.: 300W 5000K	DIM.:	SERIAL No.:
MFR.: ASD LIGHTING CORP	SUR.:	Shielding Angle:

Table--1

UNIT: X10cd

C (DEG) \ γ (DEG)	0	5	10	15	20	25	30	35	40	45	50	55	60	65	70	75	80	85	90
0	1398	1389	1383	1377	1373	1368	1366	1362	1360	1357	1355	1353	1352	1350	1349	1346	1345	1342	1341
5	1397	1392	1388	1385	1383	1381	1381	1379	1379	1377	1377	1375	1375	1374	1373	1372	1371	1368	1367
10	1394	1393	1391	1391	1391	1390	1391	1391	1391	1391	1391	1390	1390	1390	1389	1388	1387	1385	1384
15	1392	1394	1395	1397	1399	1400	1402	1402	1403	1403	1403	1403	1402	1402	1401	1400	1398	1396	1394
20	1396	1401	1405	1408	1410	1412	1413	1412	1412	1411	1410	1408	1406	1405	1403	1401	1399	1396	1394
25	1407	1416	1421	1423	1424	1422	1421	1418	1414	1410	1405	1402	1398	1396	1393	1392	1389	1388	1385
30	1433	1442	1446	1444	1439	1431	1424	1415	1406	1398	1391	1386	1380	1378	1373	1372	1368	1367	1365
35	1472	1479	1476	1465	1450	1431	1414	1398	1384	1374	1364	1358	1350	1346	1338	1335	1328	1327	1324
40	1514	1521	1513	1490	1460	1427	1397	1373	1354	1342	1330	1320	1306	1295	1279	1270	1256	1253	1247
45	1550	1557	1541	1509	1464	1419	1376	1345	1322	1308	1289	1269	1235	1208	1172	1154	1125	1119	1104
50	1600	1587	1541	1480	1413	1362	1317	1294	1275	1258	1216	1164	1092	1042	985	958	922	913	896
55	1661	1606	1517	1424	1332	1264	1220	1210	1203	1168	1065	964	862	804	750	727	698	693	681
60	1679	1583	1475	1373	1283	1223	1202	1195	1145	997	815	704	622	586	553	540	522	519	510
65	1554	1473	1388	1356	1369	1401	1463	1370	1047	746	565	485	435	419	399	394	378	375	365
70	1207	1165	1130	1218	1367	1599	1730	1391	876	559	385	324	286	274	252	239	214	209	197
75	747	718	747	934	1112	1260	1077	802	521	358	239	197	164	145	126	113	102	102	97.1
80	375	352	424	609	635	606	466	364	242	174	122	99.1	79.3	68.1	56.6	53.1	47.2	46.9	43.4
85	154	132	165	252	257	222	155	119	77.4	54.6	35.1	30.2	21.3	18.3	15.6	10.9	10.3	6.32	4.53
90	20.0	14.8	17.4	40.1	39.3	34.5	13.4	12.1	9.16	2.89	1.89	1.66	1.40	1.27	1.21	1.13	1.10	1.07	1.08
95	5.05	4.90	4.82	4.62	4.48	4.25	3.99	3.54	3.17	2.71	2.36	2.05	1.84	1.66	1.58	1.50	1.49	1.45	1.48
100	6.48	6.27	6.10	5.82	5.58	5.26	4.92	4.45	4.02	3.53	3.14	2.76	2.48	2.23	2.12	2.01	1.99	1.95	1.98
105	7.93	7.67	7.42	7.05	6.74	6.32	5.93	5.42	4.95	4.41	3.98	3.53	3.21	2.91	2.75	2.61	2.57	2.52	2.56
110	9.23	8.92	8.59	8.14	7.74	7.28	6.85	6.33	5.87	5.32	4.85	4.36	3.99	3.63	3.44	3.27	3.22	3.16	3.19
115	10.2	9.86	9.46	9.02	8.62	8.18	7.76	7.24	6.75	6.18	5.70	5.18	4.78	4.40	4.17	3.98	3.92	3.85	3.88
120	10.8	10.5	10.1	9.73	9.38	8.98	8.56	8.04	7.53	6.99	6.49	5.99	5.58	5.18	4.94	4.75	4.69	4.59	4.61
125	11.2	10.9	10.5	10.2	9.92	9.56	9.16	8.69	8.23	7.72	7.25	6.75	6.33	5.95	5.73	5.55	5.47	5.37	5.38
130	11.2	10.9	10.7	10.5	10.2	9.93	9.60	9.24	8.84	8.36	7.89	7.39	6.99	6.65	6.45	6.28	6.17	6.08	6.07
135	11.0	10.9	10.7	10.6	10.4	10.2	9.99	9.67	9.29	8.83	8.38	7.94	7.59	7.30	7.12	6.93	6.83	6.73	6.73
140	10.9	10.8	10.8	10.8	10.7	10.5	10.2	9.93	9.60	9.22	8.84	8.46	8.19	7.94	7.75	7.56	7.46	7.37	7.36
145	10.9	10.9	11.0	10.9	10.9	10.7	10.5	10.2	9.92	9.61	9.29	9.00	8.78	8.54	8.37	8.20	8.11	8.01	7.99
150	11.1	11.2	11.2	11.2	11.1	10.9	10.7	10.5	10.3	9.99	9.76	9.53	9.33	9.13	8.99	8.83	8.72	8.63	8.59
155	11.4	11.5	11.4	11.4	11.3	11.2	11.0	10.8	10.6	10.4	10.2	10.0	9.86	9.70	9.58	9.43	9.30	9.20	9.14
160	11.9	11.9	11.9	11.8	11.7	11.6	11.4	11.2	11.1	10.9	10.8	10.6	10.5	10.3	10.2	10.0	9.93	9.83	9.77
165	12.4	12.4	12.3	12.2	12.1	12.0	11.9	11.7	11.6	11.4	11.3	11.1	11.0	10.9	10.8	10.6	10.5	10.5	10.4
170	12.8	12.8	12.7	12.7	12.5	12.4	12.2	12.1	11.9	11.8	11.7	11.6	11.5	11.3	11.2	11.1	11.0	11.0	10.9
175	13.2	13.2	13.0	12.9	12.7	12.6	12.4	12.3	12.2	12.1	12.0	11.9	11.8	11.7	11.6	11.5	11.4	11.4	11.4
180	13.3	13.3	13.1	13.0	12.8	12.7	12.6	12.5	12.4	12.3	12.2	12.1	12.0	11.9	11.9	11.8	11.8	11.9	11.8

C Range: 0 - 360DEG  
 C Interval: 5.0DEG  
 Test Speed: HIGH  
 Temperature:25.3DEG  
 Operators:S  
 Test Date:2024-5-30

γ Range: 0 - 180DEG  
 γ Interval: 1.0DEG  
 Test System:EVERFINE GO-2000B\_V1 SYSTEM V2.00.446  
 Humidity:65.0%  
 Test Distance:7.850m [K=1.0000]  
 Remarks:

LUMINOUS DISTRIBUTION INTENSITY DATA

Test:U:122.26V I:2.4605A P:292.76W PF:0.9732 Freq:50.03Hz Lamp Flux:51004.6x1 lm		
NAME: ASD-LSB5B-PRO-300BR	TYPE:	WEIGHT:
SPEC.: 300W 5000K	DIM.:	SERIAL No.:
MFR.: ASD LIGHTING CORP	SUR.:	Shielding Angle:

Table--2

UNIT: X10cd

C (DEG) γ (DEG)	95	100	105	110	115	120	125	130	135	140	145	150	155	160	165	170	175	180	185
0	1337	1338	1337	1339	1338	1340	1339	1340	1340	1341	1341	1343	1343	1344	1344	1345	1346	1398	1389
5	1363	1363	1363	1363	1362	1363	1362	1362	1360	1360	1358	1358	1356	1355	1353	1351	1349	1398	1387
10	1380	1380	1380	1380	1380	1379	1378	1378	1376	1376	1374	1373	1370	1368	1364	1360	1355	1402	1387
15	1391	1391	1391	1391	1392	1392	1391	1392	1391	1392	1391	1391	1388	1385	1380	1375	1366	1410	1391
20	1391	1391	1392	1393	1395	1396	1398	1400	1403	1406	1407	1410	1409	1409	1404	1399	1387	1429	1405
25	1382	1382	1383	1384	1386	1388	1393	1397	1403	1410	1417	1425	1430	1436	1437	1436	1425	1462	1433
30	1363	1362	1363	1363	1365	1367	1373	1378	1388	1398	1412	1427	1443	1459	1470	1478	1472	1511	1481
35	1324	1324	1328	1330	1334	1336	1343	1350	1362	1376	1397	1423	1451	1480	1502	1517	1517	1557	1526
40	1252	1254	1266	1272	1285	1294	1308	1319	1335	1355	1385	1422	1460	1496	1523	1539	1539	1578	1543
45	1114	1118	1144	1162	1196	1221	1254	1276	1300	1321	1351	1379	1420	1458	1500	1534	1555	1604	1570
50	905	907	939	966	1021	1070	1139	1190	1223	1234	1253	1279	1330	1389	1458	1523	1577	1652	1637
55	687	687	710	732	783	838	934	1031	1128	1174	1201	1237	1288	1352	1423	1492	1564	1671	1692
60	515	515	530	540	571	608	689	806	1005	1223	1332	1360	1360	1364	1375	1405	1464	1583	1632
65	371	370	382	386	405	430	498	619	849	1186	1503	1514	1384	1276	1211	1179	1217	1307	1311
70	205	209	228	237	260	284	341	432	605	813	1089	1233	1198	1023	894	806	823	906	892
75	99.7	101	110	122	141	161	200	244	329	415	548	639	715	698	606	459	443	531	609
80	45.0	44.2	48.8	52.0	62.1	69.4	85.2	101	134	168	225	274	350	359	317	224	209	261	349
85	5.21	5.34	7.35	10.1	10.7	13.0	14.7	16.8	30.6	37.8	58.6	72.7	106	114	93.8	58.0	49.3	73.4	126
90	1.09	1.13	1.18	1.27	1.37	1.55	1.79	2.12	2.47	2.89	3.24	3.64	3.99	4.39	4.51	4.73	4.79	5.73	6.04
95	1.49	1.52	1.57	1.69	1.82	2.07	2.39	2.76	3.16	3.65	4.07	4.54	4.87	5.23	5.39	5.56	5.56	7.31	7.37
100	1.98	2.02	2.07	2.23	2.40	2.71	3.10	3.53	3.99	4.55	5.02	5.54	5.92	6.34	6.59	6.84	6.92	8.84	8.90
105	2.55	2.61	2.67	2.85	3.07	3.44	3.86	4.37	4.86	5.44	5.92	6.45	6.85	7.34	7.69	8.04	8.21	10.2	10.2
110	3.19	3.25	3.33	3.54	3.79	4.19	4.66	5.21	5.74	6.30	6.77	7.29	7.69	8.18	8.54	8.95	9.20	11.2	11.3
115	3.87	3.95	4.03	4.25	4.50	4.93	5.43	6.00	6.50	7.06	7.56	8.07	8.47	8.92	9.27	9.64	9.92	11.8	12.0
120	4.61	4.69	4.76	4.97	5.24	5.65	6.10	6.68	7.19	7.69	8.18	8.68	9.10	9.51	9.88	10.2	10.5	12.2	12.4
125	5.36	5.43	5.51	5.68	5.90	6.25	6.65	7.13	7.62	8.08	8.52	8.97	9.45	9.86	10.2	10.5	10.7	12.3	12.4
130	6.06	6.10	6.18	6.34	6.50	6.77	7.08	7.44	7.81	8.21	8.60	9.05	9.49	9.88	10.2	10.5	10.7	12.2	12.3
135	6.70	6.75	6.80	6.96	7.08	7.26	7.47	7.73	7.98	8.27	8.60	8.97	9.39	9.74	10.1	10.3	10.5	11.9	12.0
140	7.33	7.36	7.39	7.52	7.63	7.75	7.89	8.06	8.25	8.47	8.69	9.00	9.31	9.62	9.98	10.1	10.3	11.8	11.7
145	7.95	7.95	7.95	8.03	8.10	8.21	8.32	8.45	8.59	8.77	8.98	9.21	9.42	9.66	9.85	10.0	10.2	11.8	11.7
150	8.53	8.50	8.47	8.50	8.53	8.62	8.71	8.84	8.94	9.09	9.24	9.45	9.65	9.79	9.99	10.2	10.3	12.0	11.8
155	9.07	9.03	8.99	9.01	9.02	9.09	9.15	9.26	9.34	9.48	9.59	9.75	9.88	10.0	10.2	10.4	10.5	12.3	12.1
160	9.69	9.66	9.62	9.64	9.63	9.69	9.71	9.79	9.85	9.97	10.1	10.2	10.3	10.5	10.6	10.8	11.0	12.5	12.4
165	10.3	10.3	10.3	10.3	10.3	10.3	10.3	10.4	10.4	10.5	10.6	10.8	10.9	11.0	11.1	11.2	11.4	12.8	12.6
170	10.9	10.9	10.8	10.8	10.8	10.9	10.9	11.0	11.0	11.1	11.2	11.3	11.4	11.5	11.6	11.7	11.9	13.1	12.9
175	11.4	11.4	11.3	11.4	11.4	11.4	11.5	11.5	11.6	11.7	11.7	11.9	12.0	12.0	12.2	12.5	12.8	13.4	13.2
180	11.9	11.8	11.9	11.9	11.9	11.9	12.0	12.0	12.1	12.1	12.2	12.3	12.4	12.4	12.6	12.8	13.1	13.4	13.2

C Range: 0 - 360DEG  
 C Interval: 5.0DEG  
 Test Speed: HIGH  
 Temperature:25.3DEG  
 Operators:S  
 Test Date:2024-5-30

γ Range: 0 - 180DEG  
 γ Interval: 1.0DEG  
 Test System:EVERFINE GO-2000B\_V1 SYSTEM V2.00.446  
 Humidity:65.0%  
 Test Distance:7.850m [K=1.0000]  
 Remarks:

LUMINOUS DISTRIBUTION INTENSITY DATA

Test:U:122.26V I:2.4605A P:292.76W PF:0.9732 Freq:50.03Hz Lamp Flux:51004.6x1 lm		
NAME: ASD-LSB5B-PRO-300BR	TYPE:	WEIGHT:
SPEC.: 300W 5000K	DIM.:	SERIAL No.:
MFR.: ASD LIGHTING CORP	SUR.:	Shielding Angle:

Table--3

UNIT: X10cd

C (DEG) γ (DEG)	190	195	200	205	210	215	220	225	230	235	240	245	250	255	260	265	270	275	280
0	1383	1377	1373	1368	1366	1362	1360	1357	1355	1353	1352	1350	1349	1346	1345	1342	1341	1337	1338
5	1378	1368	1361	1353	1348	1340	1336	1329	1325	1319	1317	1312	1310	1306	1304	1299	1299	1294	1296
10	1374	1360	1348	1336	1325	1313	1304	1293	1285	1275	1269	1261	1257	1250	1248	1241	1241	1236	1240
15	1372	1352	1334	1314	1299	1280	1265	1247	1235	1220	1211	1199	1193	1183	1180	1172	1172	1166	1171
20	1379	1352	1325	1297	1272	1245	1222	1199	1180	1161	1148	1133	1124	1112	1107	1098	1097	1091	1096
25	1399	1363	1325	1286	1249	1213	1182	1150	1126	1103	1086	1069	1057	1042	1034	1023	1020	1015	1020
30	1439	1392	1338	1283	1232	1183	1143	1106	1078	1051	1031	1009	992	972	958	943	938	933	941
35	1482	1427	1359	1287	1218	1156	1107	1063	1029	997	970	938	915	886	870	849	844	839	853
40	1495	1438	1371	1294	1214	1140	1078	1020	972	922	883	841	813	783	766	747	743	739	754
45	1507	1428	1344	1258	1180	1099	1030	955	888	820	775	731	706	680	669	653	651	646	659
50	1571	1475	1352	1235	1130	1030	940	848	773	703	662	627	611	596	589	578	575	571	580
55	1662	1584	1448	1299	1145	1000	859	735	655	594	563	541	538	534	534	522	516	513	525
60	1679	1645	1550	1405	1221	1016	801	635	551	499	477	460	459	453	456	448	447	444	455
65	1391	1417	1395	1316	1213	992	742	555	463	415	397	380	376	366	366	360	363	360	368
70	909	950	1046	1069	995	783	597	455	381	334	314	292	273	247	237	223	226	225	242
75	657	644	659	635	585	464	386	313	273	234	204	172	153	134	126	120	121	120	127
80	501	502	386	278	229	179	155	137	131	119	109	92.0	84.5	77.2	75.3	71.7	73.8	72.6	76.0
85	243	196	129	75.8	63.6	48.2	43.3	33.5	37.4	34.6	36.9	35.2	35.2	34.0	32.1	31.8	31.7	33.2	35.3
90	6.15	6.56	6.22	6.05	5.92	5.68	5.47	5.09	4.80	4.30	4.09	3.36	2.92	2.50	2.33	2.03	2.16	2.30	3.08
95	7.22	7.05	6.70	6.39	5.99	5.65	5.23	4.83	4.31	3.85	3.32	2.94	2.64	2.50	2.38	2.36	2.31	2.34	2.34
100	8.71	8.45	7.99	7.57	7.07	6.68	6.23	5.82	5.31	4.84	4.30	3.88	3.49	3.29	3.12	3.08	3.02	3.06	3.07
105	10.0	9.70	9.17	8.63	8.06	7.61	7.17	6.82	6.36	5.92	5.39	4.95	4.52	4.27	4.06	3.99	3.93	3.97	3.99
110	11.1	10.7	10.2	9.58	8.97	8.50	8.06	7.77	7.39	7.01	6.50	6.07	5.63	5.36	5.12	5.05	4.97	5.02	5.05
115	11.8	11.5	11.0	10.5	9.98	9.54	9.08	8.73	8.35	8.02	7.57	7.17	6.75	6.50	6.26	6.21	6.12	6.17	6.19
120	12.3	12.1	11.7	11.3	10.8	10.4	9.94	9.57	9.20	8.89	8.50	8.16	7.81	7.61	7.42	7.37	7.29	7.34	7.36
125	12.5	12.3	12.1	11.6	11.2	10.8	10.5	10.1	9.84	9.55	9.23	9.00	8.76	8.65	8.49	8.45	8.39	8.43	8.45
130	12.4	12.4	12.2	11.8	11.4	11.0	10.6	10.4	10.1	9.94	9.80	9.72	9.62	9.55	9.42	9.40	9.35	9.38	9.40
135	12.1	12.1	12.0	11.8	11.5	11.1	10.8	10.6	10.4	10.3	10.3	10.3	10.3	10.3	10.2	10.2	10.2	10.2	10.2
140	11.7	11.7	11.7	11.6	11.5	11.3	11.1	10.9	10.8	10.7	10.7	10.8	10.8	10.8	10.7	10.8	10.7	10.8	10.8
145	11.6	11.5	11.5	11.5	11.5	11.4	11.3	11.2	11.1	11.1	11.1	11.1	11.0	11.0	11.1	11.1	11.1	11.1	11.2
150	11.8	11.7	11.6	11.6	11.6	11.5	11.5	11.5	11.5	11.4	11.3	11.3	11.3	11.3	11.3	11.3	11.3	11.4	11.4
155	12.0	11.9	11.9	11.8	11.8	11.8	11.8	11.7	11.7	11.6	11.6	11.5	11.5	11.6	11.5	11.6	11.6	11.6	11.6
160	12.3	12.2	12.2	12.1	12.0	11.9	11.9	11.9	11.8	11.8	11.8	11.8	11.8	11.8	11.8	11.8	11.8	11.8	11.9
165	12.5	12.4	12.4	12.3	12.2	12.1	12.1	12.0	12.0	11.9	11.9	11.9	11.9	12.0	12.0	12.0	12.0	12.0	12.0
170	12.8	12.7	12.6	12.5	12.4	12.3	12.3	12.2	12.1	12.1	12.1	12.1	12.0	12.0	12.0	12.0	12.1	12.1	12.1
175	13.1	12.9	12.8	12.7	12.6	12.5	12.4	12.3	12.2	12.1	12.1	12.0	12.0	12.0	12.0	12.0	12.0	12.0	12.0
180	13.1	12.9	12.9	12.7	12.6	12.5	12.4	12.3	12.2	12.1	12.1	12.0	11.9	11.9	11.9	11.8	11.9	11.8	11.8

C Range: 0 - 360DEG  
 C Interval: 5.0DEG  
 Test Speed: HIGH  
 Temperature:25.3DEG  
 Operators:S  
 Test Date:2024-5-30

γ Range: 0 - 180DEG  
 γ Interval: 1.0DEG  
 Test System:EVERFINE GO-2000B\_V1 SYSTEM V2.00.446  
 Humidity:65.0%  
 Test Distance:7.850m [K=1.0000]  
 Remarks:

LUMINOUS DISTRIBUTION INTENSITY DATA

Test:U:122.26V I:2.4605A P:292.76W PF:0.9732 Freq:50.03Hz Lamp Flux:51004.6x1 lm		
NAME: ASD-LSB5B-PRO-300BR	TYPE:	WEIGHT:
SPEC.: 300W 5000K	DIM.:	SERIAL No.:
MFR.: ASD LIGHTING CORP	SUR.:	Shielding Angle:

Table--4

UNIT: X10cd

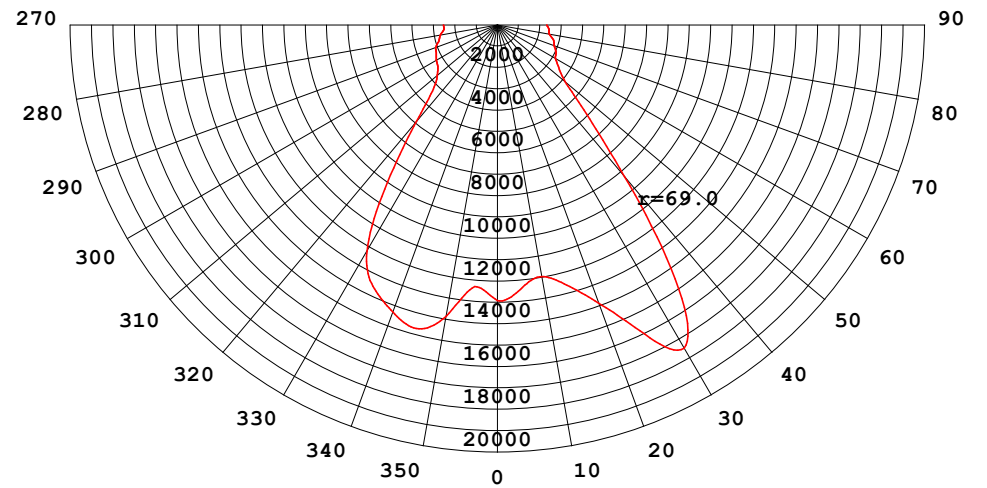
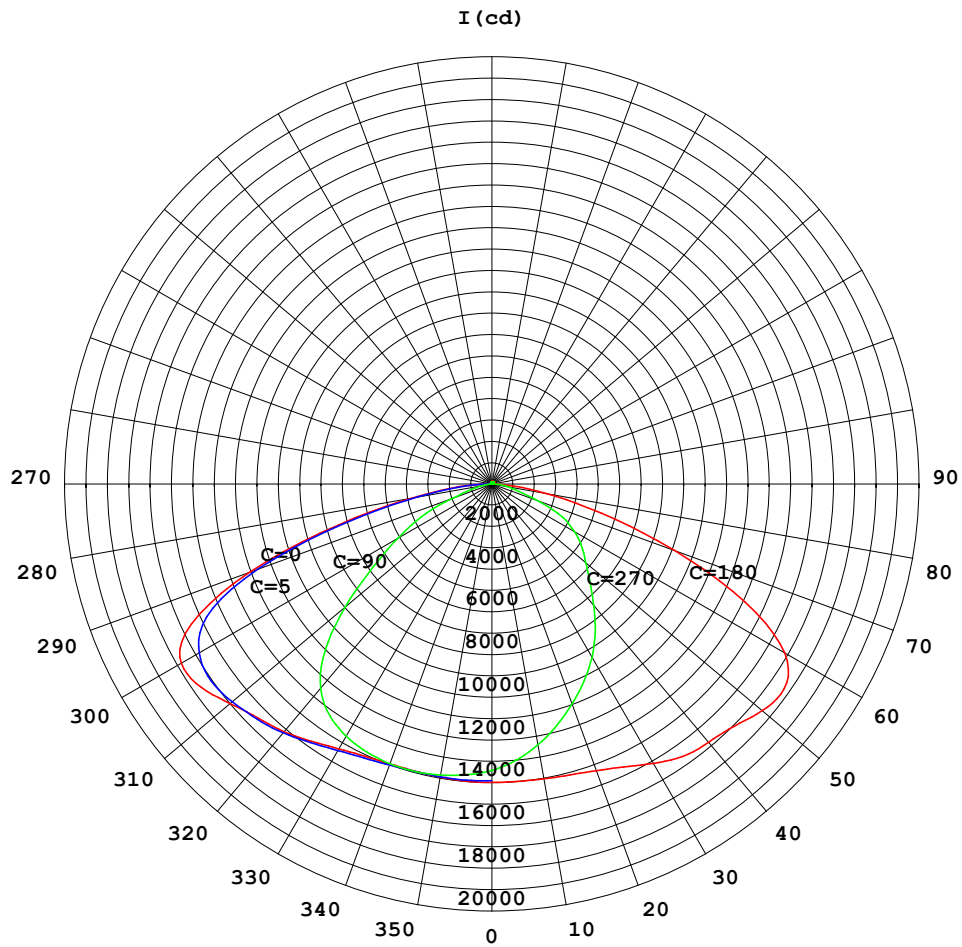
C (DEG) γ (DEG)	285	290	295	300	305	310	315	320	325	330	335	340	345	350	355				
0	1337	1339	1338	1340	1339	1340	1340	1341	1341	1343	1343	1344	1344	1345	1346				
5	1296	1299	1300	1304	1304	1309	1311	1315	1318	1323	1326	1331	1335	1339	1343				
10	1239	1245	1247	1253	1258	1266	1272	1280	1288	1297	1305	1313	1321	1330	1337				
15	1171	1178	1183	1193	1201	1213	1224	1238	1250	1265	1278	1292	1305	1319	1331				
20	1098	1107	1114	1127	1138	1156	1171	1191	1209	1230	1250	1272	1292	1312	1330				
25	1025	1038	1047	1064	1078	1099	1119	1143	1168	1196	1225	1256	1286	1314	1339				
30	951	969	985	1006	1025	1048	1070	1099	1130	1167	1206	1248	1290	1328	1363				
35	867	894	917	947	971	1000	1026	1058	1095	1141	1193	1249	1308	1359	1403				
40	769	798	825	864	900	942	979	1021	1065	1121	1187	1261	1335	1395	1444				
45	670	696	719	759	801	861	919	982	1041	1108	1185	1268	1345	1412	1469				
50	588	604	620	652	691	757	831	920	993	1072	1155	1248	1346	1440	1517				
55	530	537	540	558	585	643	720	829	933	1043	1151	1267	1408	1529	1597				
60	457	466	464	476	491	535	604	731	896	1069	1228	1389	1569	1664	1663				
65	370	379	381	394	405	436	495	641	909	1183	1397	1554	1659	1667	1556				
70	255	283	297	314	325	353	409	574	874	1204	1332	1384	1381	1275	1129				
75	139	159	179	213	239	271	317	433	618	894	1057	1029	850	758	721				
80	77.9	85.5	94.7	120	138	161	177	223	280	411	483	547	522	504	414				
85	37.6	42.1	43.5	49.6	53.0	57.7	58.2	70.7	80.8	110	144	229	331	325	177				
90	3.25	3.74	4.02	4.37	4.48	5.82	9.59	8.13	11.3	11.0	18.0	33.8	32.5	76.8	19.6				
95	2.44	2.67	3.05	3.46	3.94	4.41	4.76	4.98	5.39	5.64	5.77	5.83	5.98	6.04	6.15				
100	3.21	3.35	3.68	4.04	4.54	4.97	5.44	5.69	6.13	6.38	6.70	6.92	7.27	7.48	7.67				
105	4.16	4.36	4.73	5.08	5.56	5.96	6.41	6.73	7.10	7.41	7.84	8.16	8.61	8.92	9.16				
110	5.26	5.47	5.86	6.21	6.66	6.99	7.35	7.61	8.00	8.38	8.88	9.29	9.82	10.2	10.5				
115	6.41	6.61	7.00	7.32	7.72	7.99	8.31	8.57	8.98	9.36	9.88	10.3	10.8	11.2	11.4				
120	7.55	7.71	8.05	8.32	8.66	8.93	9.29	9.60	10.0	10.4	10.8	11.1	11.5	11.9	12.1				
125	8.63	8.73	8.99	9.22	9.57	9.84	10.2	10.5	10.8	11.1	11.4	11.7	12.0	12.2	12.4				
130	9.57	9.64	9.81	9.99	10.3	10.6	10.9	11.2	11.4	11.6	11.8	11.9	12.1	12.2	12.3				
135	10.3	10.4	10.5	10.6	10.9	11.1	11.4	11.6	11.7	11.8	12.0	12.0	12.1	12.2	12.2				
140	10.9	11.0	11.1	11.2	11.4	11.5	11.7	11.8	11.9	12.0	12.1	12.1	12.2	12.2	12.1				
145	11.3	11.4	11.5	11.6	11.7	11.8	11.9	12.0	12.1	12.1	12.2	12.2	12.2	12.2	12.0				
150	11.5	11.6	11.7	11.8	11.9	12.0	12.0	12.1	12.2	12.3	12.3	12.2	12.3	12.2	12.1				
155	11.7	11.8	11.8	11.9	12.0	12.1	12.2	12.3	12.4	12.5	12.5	12.4	12.4	12.4	12.4				
160	11.9	12.0	12.0	12.1	12.1	12.2	12.3	12.4	12.5	12.6	12.7	12.6	12.7	12.7	12.6				
165	12.1	12.1	12.1	12.2	12.2	12.3	12.3	12.4	12.5	12.6	12.7	12.7	12.8	12.8	12.8				
170	12.1	12.1	12.2	12.2	12.2	12.3	12.4	12.4	12.5	12.6	12.7	12.8	12.9	12.9	13.0				
175	12.0	12.1	12.1	12.1	12.1	12.2	12.2	12.3	12.4	12.5	12.6	12.7	12.8	13.0	13.1				
180	11.9	11.9	11.9	11.9	12.0	12.0	12.1	12.1	12.2	12.3	12.4	12.4	12.6	12.8	13.1				

C Range: 0 - 360DEG  
 C Interval: 5.0DEG  
 Test Speed: HIGH  
 Temperature:25.3DEG  
 Operators:S  
 Test Date:2024-5-30

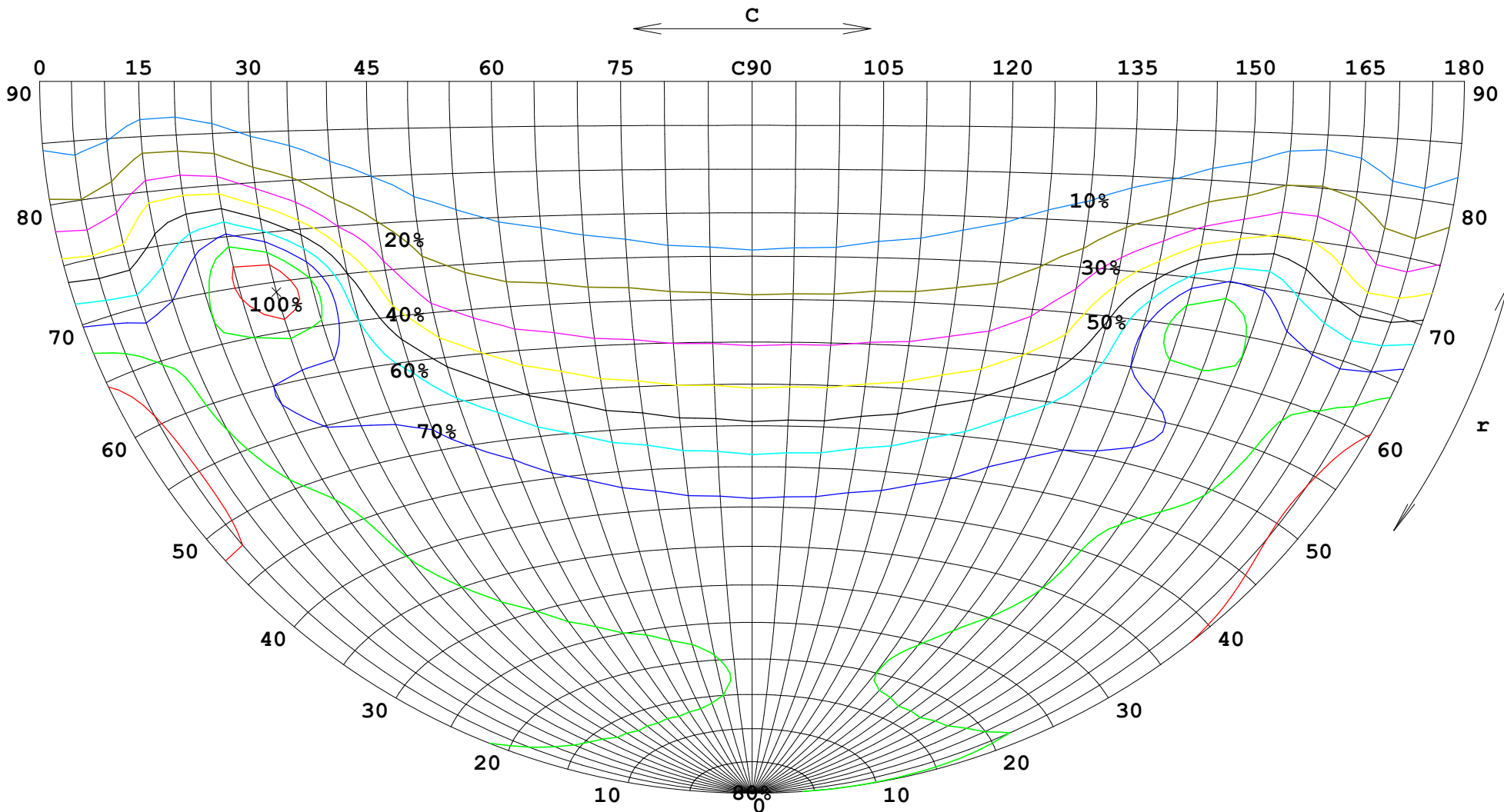
γ Range: 0 - 180DEG  
 γ Interval: 1.0DEG  
 Test System:EVERFINE GO-2000B\_V1 SYSTEM V2.00.446  
 Humidity:65.0%  
 Test Distance:7.850m [K=1.0000]  
 Remarks:

**FLUX DATA:**

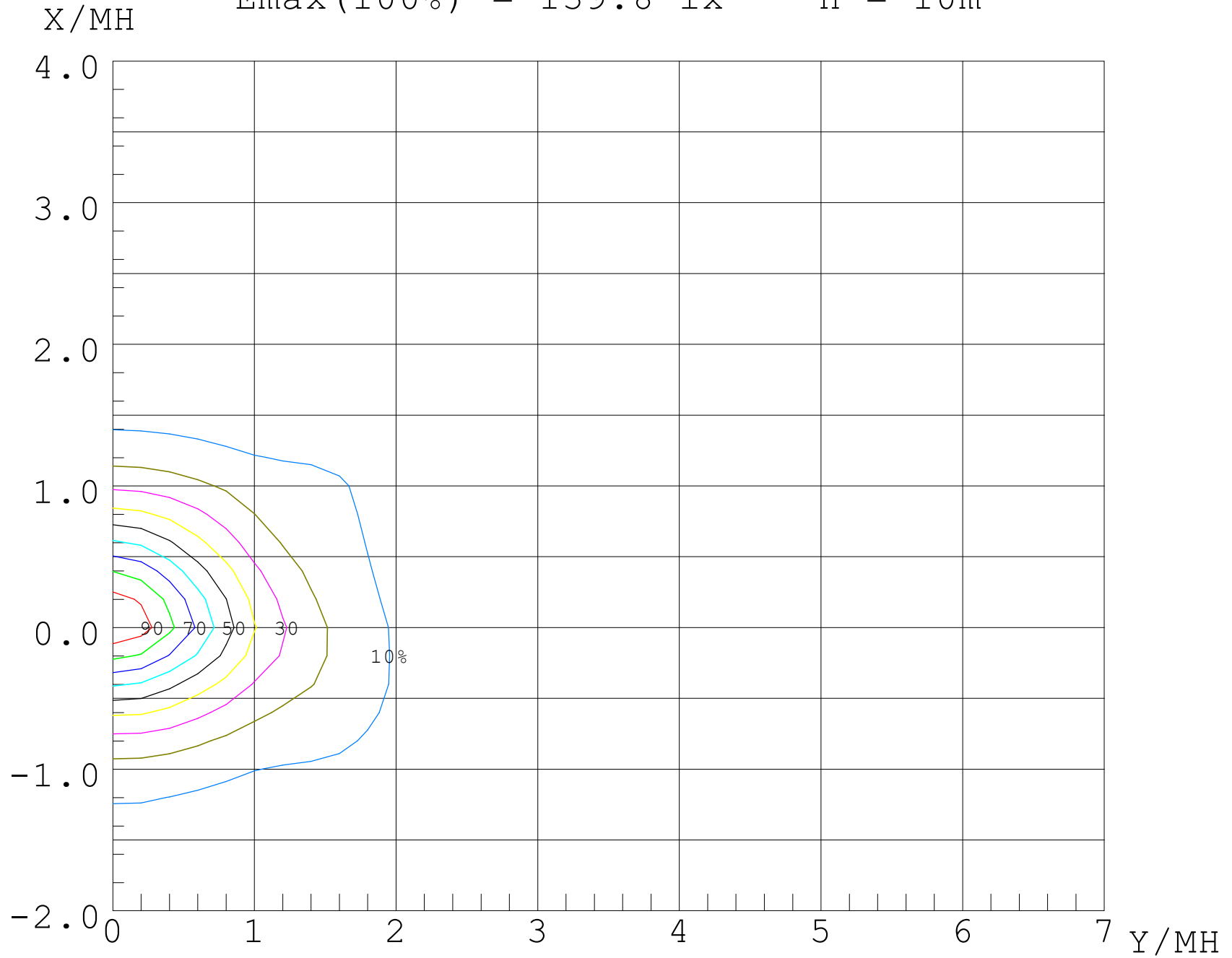
LOR: 100.0 %  
STREET DOWN: 27257 lm  
STREET UP: 219.1 lm  
HOUSE DOWN: 23246 lm  
HOUSE UP: 281.9 lm



$I_{max}(100\%) = 17476 \text{ cd}$



$E_{max}(100\%) = 139.8 \text{ lx}$        $H = 10\text{m}$



UF (%)

80

70

60

50

40

30

20

10

0

-2

-1

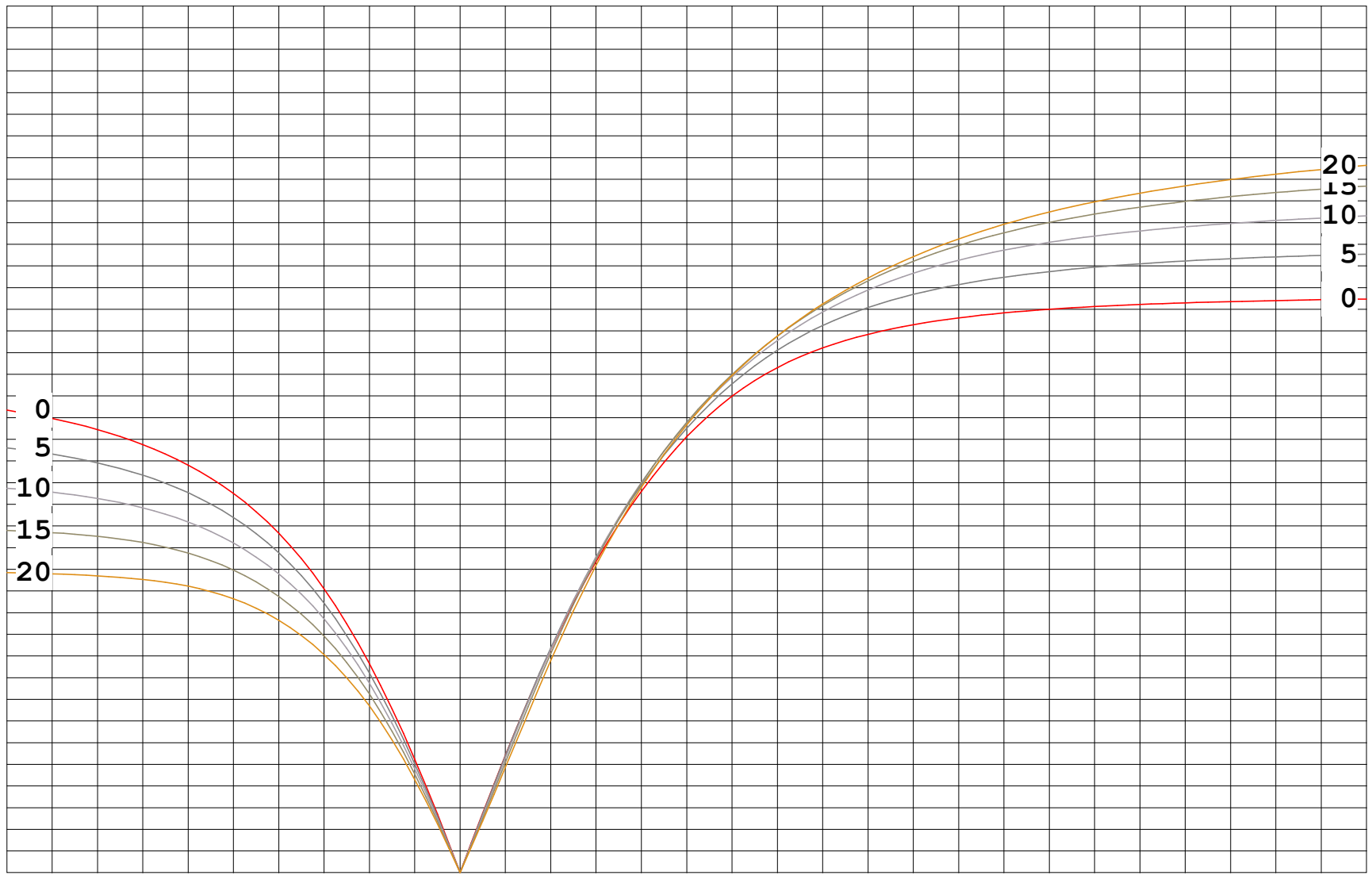
0

1

2

3

4 X/MH



0  
5  
10  
15  
20

20  
15  
10  
5  
0