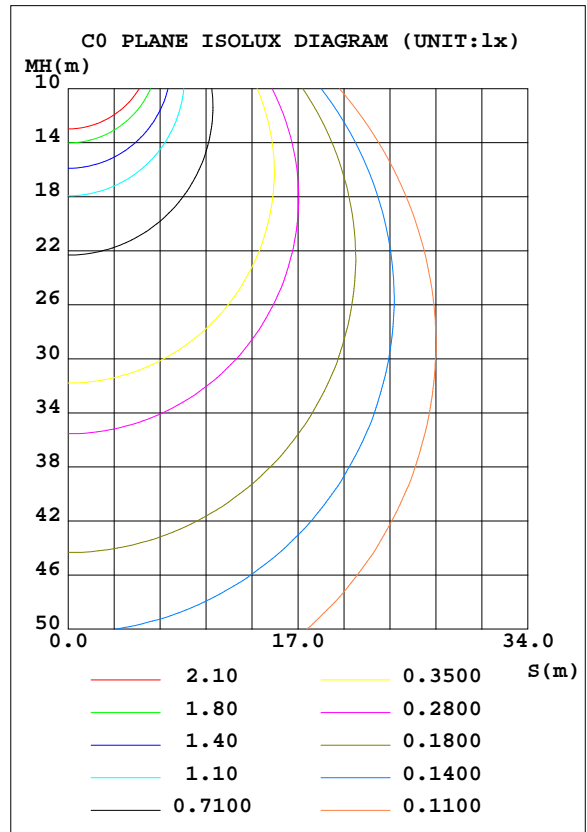
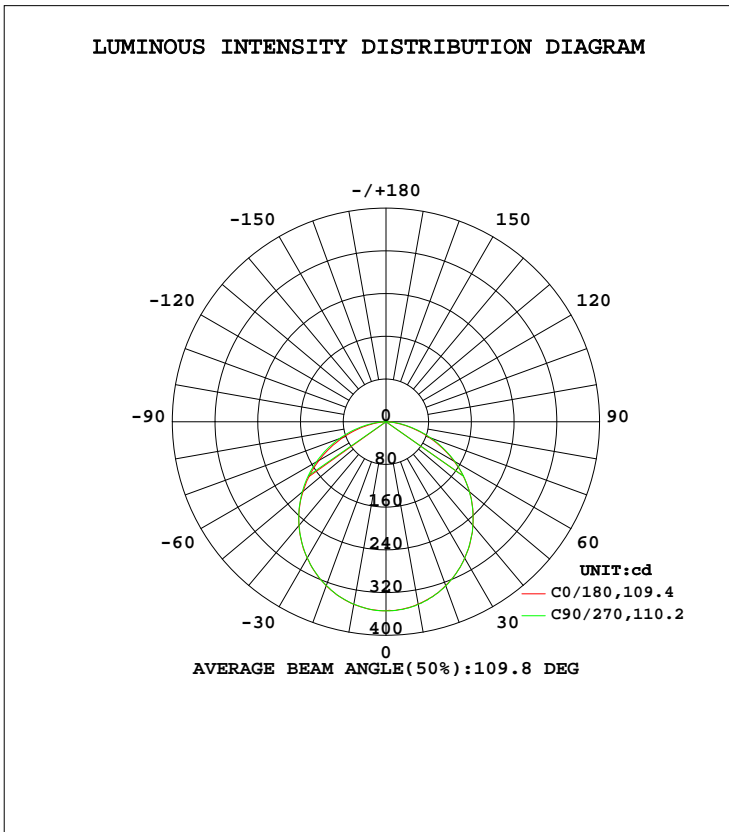


LUMINAIRE PHOTOMETRIC TEST REPORT

Test:U:120.0V I:0.1361A P:15.33W PF:0.9386 Lamp Flux:974.532x1 lm		
NAME: LED luminaire	TYPE:N/A	WEIGHT:N/A
SPEC.:ASD-MPS-7D15CC-BK 3000K	DIM.: N/A	SERIAL No.:N/A
MFR.: ASD LIGHTING CORP	SUR.:N/A	Shielding Angle:N/A

DATA OF LAMP		PHOTOMETRIC DATA Eff: 63.57 lm/W			
MODEL	PSZ2S230215006-10	I _{max} (cd)	355.1	S/MH(C0/180)	1.24
NOMINAL POWER(W)		LOR(%)	100.0	S/MH(C90/270)	1.24
RATED VOLTAGE(V)	120	TOTAL FLUX(lm)	974.53	η UP, DN(C0-180)	0.1,50.2
NOMINAL FLUX(lm)	974.532	CIE CLASS	DIRECT	η UP, DN(C180-360)	0.0,49.7
LAMPS INSIDE	1	η up(%)	0.1	CIBSE SHR NOM	1.25
TEST VOLTAGE(V)	120	η down(%)	99.9	CIBSE SHR MAX	1.35



C Range: 0 - 360DEG
 C Interval: 22.5DEG
 Test Speed: HIGH
 Temperature:24.6DEG
 Operators:Evan
 Test Date:2023-02-21

γ Range: 0 - 180DEG
 γ Interval: 1.0DEG
 Test System:EVERFINE GO-R5000_V2 SYSTEM V2.0.351
 Humidity:51%
 Test Distance:2.532m [K=1.0000]
 Remarks:

ZONAL FLUX DIAGRAM

ZONAL FLUX DIAGRAM:

γ	C0	C45	C90	C135	C180	C225	C270	C315	γ	Φ zone	Φ total	%lum, lamp
10	347.2	346.5	347.1	347.1	346.7	346.8	347.1	346.9	0- 10	33.47	33.47	3.43,3.43
20	327.0	326.2	326.6	327.0	326.7	326.4	327.0	326.2	10- 20	95.47	128.9	13.2,13.2
30	295.0	294.3	294.8	294.9	295.0	294.8	294.7	293.6	20- 30	143.7	272.7	28,28
40	253.5	253.1	253.7	253.9	253.3	253.1	253.0	251.8	30- 40	172.0	444.6	45.6,45.6
50	203.0	204.0	205.1	205.3	204.3	203.9	203.9	202.4	40- 50	176.9	621.5	63.8,63.8
60	145.0	148.2	150.8	151.0	147.1	148.8	148.9	146.3	50- 60	157.8	779.3	80,80
70	84.83	88.48	93.30	91.69	86.28	87.97	89.77	85.66	60- 70	117.0	896.4	92,92
80	29.44	32.61	37.94	35.31	31.19	32.25	35.03	30.34	70- 80	63.33	959.7	98.5,98.5
90	0.0587	0.0688	0.1238	0.0732	0.0137	0.0167	0.0165	0.0179	80- 90	13.80	973.5	99.9,99.9
100	0.0759	0.0998	0.0883	0.1032	0.0276	0.0380	0.0332	0.0483	90-100	0.0535	973.5	99.9,99.9
110	0.1003	0.1095	0.1042	0.1189	0.0635	0.0647	0.0611	0.0704	100-110	0.0777	973.6	99.9,99.9
120	0.1297	0.1440	0.1357	0.1444	0.0883	0.0902	0.0877	0.0965	110-120	0.0994	973.7	99.9,99.9
130	0.1985	0.2037	0.2094	0.2187	0.1453	0.1413	0.1317	0.1347	120-130	0.1280	973.8	99.9,99.9
140	0.3027	0.3188	0.3400	0.3289	0.1904	0.1900	0.1792	0.1727	130-140	0.1600	974.0	99.9,99.9
150	0.4295	0.4630	0.4763	0.4727	0.2210	0.2143	0.2253	0.2195	140-150	0.1876	974.2	100,100
160	0.5394	0.5755	0.5822	0.5522	0.2648	0.2604	0.2772	0.2575	150-160	0.1756	974.4	100,100
170	0.5314	0.5117	0.5324	0.5099	0.3328	0.3055	0.3238	0.3336	160-170	0.1206	974.5	100,100
180	0.4044	0.3886	0.3773	0.4173	0.4188	0.4056	0.3846	0.3956	170-180	0.0401	974.5	100,100
DEG	LUMINOUS INTENSITY:cd									UNIT:lm		

Conical surface Flux(90deg): 533.98 lm

%lum = 54.8%
%lamp = 54.8%

Conical surface Flux(120deg): 779.34 lm

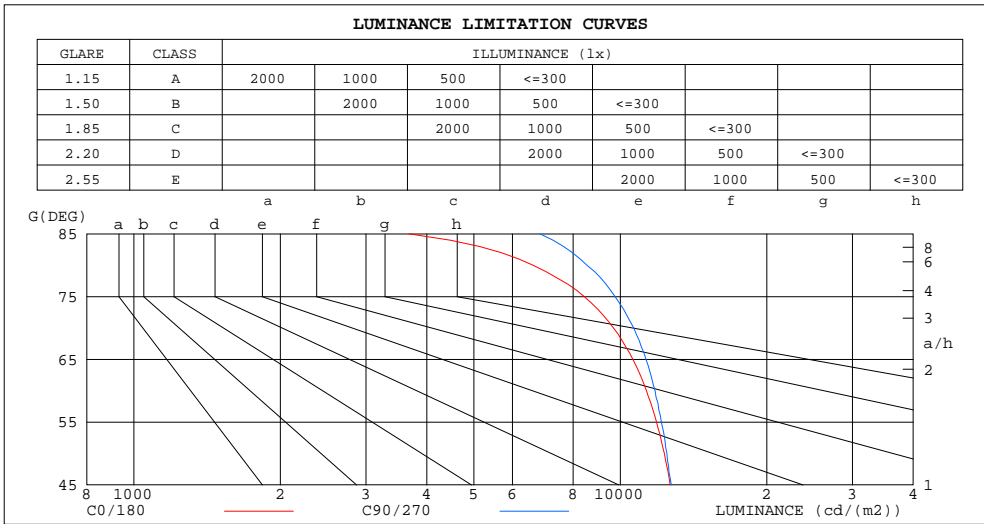
%lum = 80.0%
%lamp = 80.0%

C Range: 0 - 360DEG
C Interval: 22.5DEG
Test Speed: HIGH
Temperature:24.6DEG
Operators:Evan
Test Date:2023-02-21

γ Range: 0 - 180DEG
γ Interval: 1.0DEG
Test System:EVERFINE GO-R5000_V2 SYSTEM V2.0.351
Humidity:51%
Test Distance:2.532m [K=1.0000]
Remarks:

LUMINANCE LIMITATION CURVES

Test:U:120.0V I:0.1361A P:15.33W PF:0.9386 Lamp Flux:974.532x1 lm		
NAME: LED luminaire	TYPE:N/A	WEIGHT:N/A
SPEC.:ASD-MPS-7D15CC-BK 3000K	DIM.: N/A	SERIAL No.:N/A
MFR.: ASD LIGHTING CORP	SUR.:N/A	Shielding Angle:N/A



LUMINANCE cd/(m2)		
G(DEG)	C0/180	C90/270
85	3678	6835
80	6615	8537
75	8425	9753
70	9677	10659
65	10606	11286
60	11318	11784
55	11864	12143
50	12320	12468
45	12663	12722

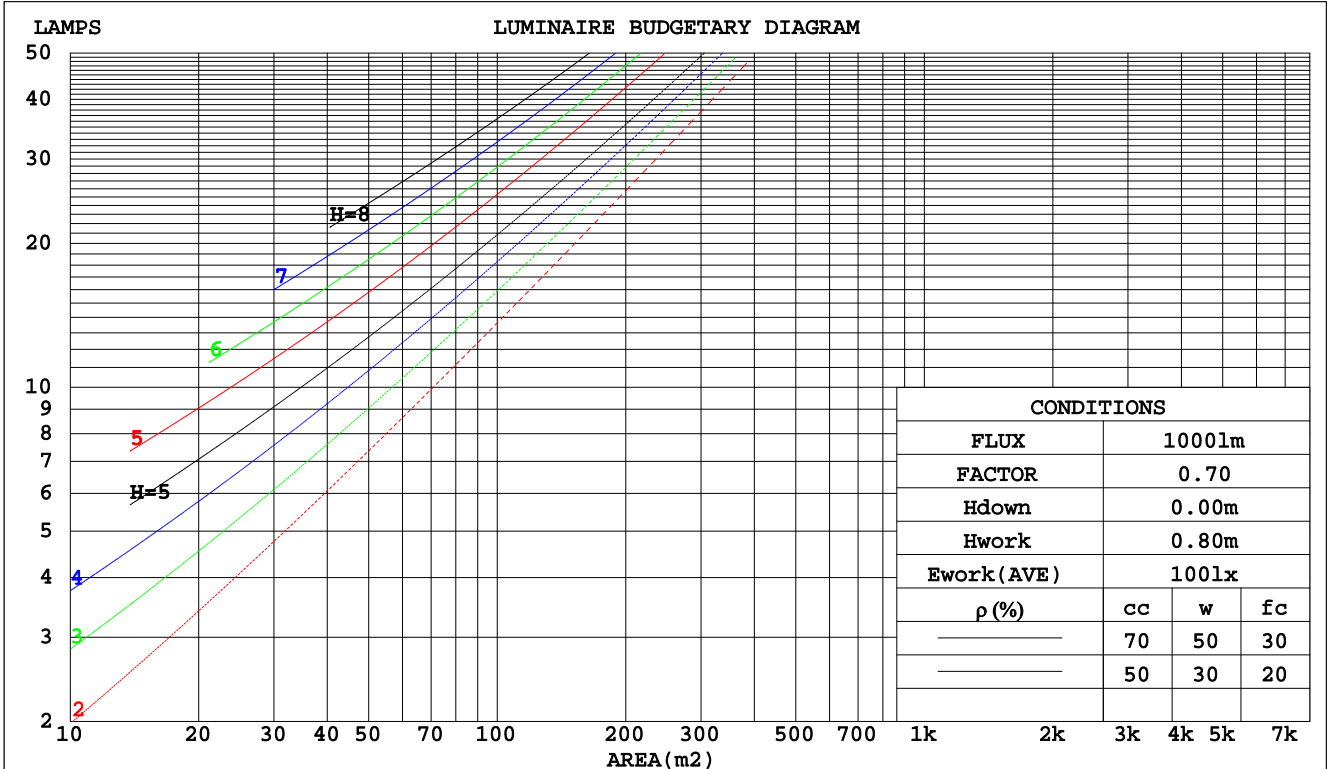
C Range: 0 - 360DEG
 C Interval: 22.5DEG
 Test Speed: HIGH
 Temperature:24.6DEG
 Operators:Evan
 Test Date:2023-02-21

γ Range: 0 - 180DEG
 γ Interval: 1.0DEG
 Test System:EVERFINE GO-R5000_V2 SYSTEM V2.0.351
 Humidity:51%
 Test Distance:2.532m [K=1.0000]
 Remarks:

CU AND LUMINAIRE BUDGETARY ESTIMATE DIAGRAM

Test:U:120.0V I:0.1361A P:15.33W PF:0.9386 Lamp Flux:974.532x1 lm		
NAME: LED luminaire	TYPE:N/A	WEIGHT:N/A
SPEC.:ASD-MPS-7D15CC-BK 3000K	DIM.: N/A	SERIAL No.:N/A
MFR.: ASD LIGHTING CORP	SUR.:N/A	Shielding Angle:N/A

pcc	80%			70%			50%			30%			10%			0
	50%	30%	10%	50%	30%	10%	50%	30%	10%	50%	30%	10%	50%	30%	10%	0
pw																0
pfc	20%			20%			20%			20%			20%			0
RCR	RCR:Room Cavity Ratio															
	Coefficients of Utilization(CU)															
0.0	1.19	1.19	1.19	1.16	1.16	1.16	1.11	1.11	1.11	1.06	1.06	1.06	1.02	1.02	1.02	.00
1.0	1.04	1.00	.96	1.02	.98	.95	.98	.95	.92	.94	.91	.89	.90	.88	.86	.84
2.0	.91	.84	.79	.89	.83	.78	.86	.80	.76	.82	.78	.74	.79	.76	.72	.70
3.0	.80	.72	.65	.78	.71	.65	.75	.69	.64	.73	.67	.63	.70	.65	.61	.59
4.0	.71	.62	.55	.70	.61	.55	.67	.60	.54	.65	.59	.54	.63	.57	.53	.51
5.0	.63	.54	.48	.62	.54	.48	.60	.53	.47	.58	.52	.46	.56	.51	.46	.44
6.0	.57	.48	.42	.56	.48	.42	.54	.47	.41	.53	.46	.41	.51	.45	.40	.38
7.0	.52	.43	.37	.51	.43	.37	.49	.42	.36	.48	.41	.36	.47	.40	.36	.34
8.0	.47	.39	.33	.47	.38	.33	.45	.38	.33	.44	.37	.32	.43	.37	.32	.30
9.0	.43	.35	.30	.43	.35	.30	.42	.34	.29	.40	.34	.29	.39	.33	.29	.27
10.0	.40	.32	.27	.39	.32	.27	.38	.31	.27	.38	.31	.27	.37	.31	.26	.25



C Range: 0 - 360DEG
 C Interval: 22.5DEG
 Test Speed: HIGH
 Temperature:24.6DEG
 Operators:Evan
 Test Date:2023-02-21

γ Range: 0 - 180DEG
 γ Interval: 1.0DEG
 Test System:EVERFINE GO-R5000_V2 SYSTEM V2.0.351
 Humidity:51%
 Test Distance:2.532m [K=1.0000]
 Remarks:

WEC AND CCEC

Test:U:120.0V I:0.1361A P:15.33W PF:0.9386 Lamp Flux:974.532x1 lm		
NAME: LED luminaire	TYPE:N/A	WEIGHT:N/A
SPEC.:ASD-MPS-7D15CC-BK 3000K	DIM.: N/A	SERIAL No.:N/A
MFR.: ASD LIGHTING CORP	SUR.:N/A	Shielding Angle:N/A

ρcc	80%			70%			50%			30%			10%			0
ρw	50%	30%	10%	50%	30%	10%	50%	30%	10%	50%	30%	10%	50%	30%	10%	0
ρfc	20%			20%			20%			20%			20%			0
RCR	RCR:Room Cavity Ratio						Wall Exitance Coefficients(WEC)									
0.0																
1.0	.301	.171	.054	.294	.168	.053	.281	.161	.051	.269	.155	.050	.257	.149	.048	
2.0	.286	.157	.048	.280	.154	.047	.268	.149	.046	.257	.144	.045	.247	.140	.044	
3.0	.266	.141	.042	.260	.139	.042	.250	.135	.041	.240	.132	.040	.232	.128	.040	
4.0	.246	.128	.038	.241	.126	.037	.232	.123	.037	.223	.120	.036	.216	.117	.036	
5.0	.228	.116	.034	.224	.115	.033	.215	.112	.033	.208	.110	.033	.201	.107	.032	
6.0	.212	.106	.030	.208	.105	.030	.201	.103	.030	.194	.101	.030	.187	.099	.029	
7.0	.197	.098	.028	.194	.097	.028	.187	.095	.027	.181	.093	.027	.176	.091	.027	
8.0	.184	.090	.025	.181	.089	.025	.176	.088	.025	.170	.086	.025	.165	.085	.025	
9.0	.173	.084	.023	.170	.083	.023	.165	.082	.023	.160	.080	.023	.155	.079	.023	
10.0	.163	.078	.022	.160	.077	.022	.155	.076	.021	.151	.075	.021	.147	.074	.021	

ρcc	80%			70%			50%			30%			10%			0
ρw	50%	30%	10%	50%	30%	10%	50%	30%	10%	50%	30%	10%	50%	30%	10%	0
ρfc	20%			20%			20%			20%			20%			0
RCR	RCR:Room Cavity Ratio						Ceiling Cavity Exitance Coefficients(CCEC)									
0.0	.191	.191	.191	.163	.163	.163	.112	.112	.112	.064	.064	.064	.020	.020	.020	
1.0	.181	.157	.136	.154	.135	.117	.106	.093	.081	.061	.054	.047	.019	.017	.015	
2.0	.172	.133	.100	.148	.114	.086	.101	.079	.060	.058	.046	.035	.019	.015	.011	
3.0	.165	.115	.076	.141	.099	.066	.097	.069	.046	.056	.040	.027	.018	.013	.009	
4.0	.157	.102	.060	.135	.088	.052	.093	.061	.036	.054	.036	.022	.017	.012	.007	
5.0	.150	.091	.048	.128	.079	.042	.088	.055	.030	.051	.032	.018	.017	.011	.006	
6.0	.142	.083	.040	.122	.072	.035	.084	.050	.025	.049	.030	.015	.016	.010	.005	
7.0	.136	.076	.034	.117	.066	.030	.081	.046	.021	.047	.027	.013	.015	.009	.004	
8.0	.129	.070	.030	.111	.061	.026	.077	.043	.018	.045	.025	.011	.014	.008	.004	
9.0	.123	.065	.026	.106	.057	.023	.074	.040	.016	.043	.024	.010	.014	.008	.003	
10.0	.118	.061	.023	.101	.053	.020	.070	.037	.014	.041	.022	.009	.013	.007	.003	

C Range: 0 - 360DEG
 C Interval: 22.5DEG
 Test Speed: HIGH
 Temperature:24.6DEG
 Operators:Evan
 Test Date:2023-02-21

γ Range: 0 - 180DEG
 γ Interval: 1.0DEG
 Test System:EVERFINE GO-R5000_V2 SYSTEM V2.0.351
 Humidity:51%
 Test Distance:2.532m [K=1.0000]
 Remarks:

UGR(Unified Glare Rating) Table

Test:U:120.0V I:0.1361A P:15.33W PF:0.9386 Lamp Flux:974.532x1 lm										
NAME: LED luminaire					TYPE:N/A			WEIGHT:N/A		
SPEC.:ASD-MPS-7D15CC-BK 3000K					DIM.: N/A			SERIAL No.:N/A		
MFR.: ASD LIGHTING CORP					SUR.:N/A			Shielding Angle:N/A		
ceiling/cavity	0.7	0.7	0.5	0.5	0.3	0.7	0.7	0.5	0.5	0.3
walls	0.5	0.3	0.5	0.3	0.3	0.5	0.3	0.5	0.3	0.3
working plane	0.2	0.2	0.2	0.2	0.2	0.2	0.2	0.2	0.2	0.2
Room dimensions	Viewed crosswise					Viewed endwise				
x = 2H y = 2H	21.4	22.9	21.7	23.1	23.3	21.6	23.1	21.8	23.3	23.5
3H	22.8	24.2	23.1	24.4	24.6	23.1	24.4	23.4	24.7	24.9
4H	23.3	24.6	23.6	24.8	25.1	23.6	25.0	24.0	25.2	25.5
6H	23.5	24.8	23.9	25.1	25.3	24.0	25.3	24.4	25.6	25.8
8H	23.6	24.8	23.9	25.1	25.4	24.1	25.4	24.5	25.6	25.9
12H	23.6	24.8	24.0	25.0	25.4	24.2	25.4	24.6	25.7	26.0
4H 2H	22.0	23.3	22.3	23.6	23.9	22.1	23.5	22.4	23.7	24.0
3H	23.5	24.7	23.9	25.0	25.3	23.8	25.0	24.2	25.3	25.6
4H	24.1	25.2	24.5	25.5	25.9	24.5	25.6	24.9	25.9	26.2
6H	24.5	25.5	24.9	25.8	26.2	25.0	26.0	25.4	26.3	26.7
8H	24.6	25.5	25.0	25.9	26.2	25.2	26.0	25.6	26.4	26.8
12H	24.6	25.4	25.1	25.8	26.2	25.3	26.1	25.7	26.5	26.9
8H 4H	24.4	25.3	24.8	25.6	26.0	24.7	25.6	25.1	25.9	26.3
6H	24.9	25.6	25.3	26.0	26.4	25.3	26.1	25.8	26.5	26.9
8H	25.0	25.7	25.5	26.1	26.6	25.6	26.2	26.0	26.6	27.1
12H	25.1	25.6	25.6	26.1	26.6	25.7	26.3	26.2	26.7	27.2
12H 4H	24.4	25.2	24.8	25.6	26.0	24.7	25.5	25.1	25.9	26.3
6H	24.9	25.6	25.4	26.0	26.4	25.4	26.0	25.8	26.4	26.9
8H	25.1	25.7	25.6	26.1	26.6	25.6	26.2	26.1	26.6	27.1
Variations with the observer position at spacings:										
S = 1.0H	+ 0.2 / - 0.2					+ 0.2 / - 0.2				
1.5H	+ 0.2 / - 0.3					+ 0.2 / - 0.3				
2.0H	+ 0.2 / - 0.3					+ 0.2 / - 0.3				

CIE Pub.117 Corrected 974.5 lm Total Lamp Luminous Flux. (8log(F/F0) = -0.1)

C Range: 0 - 360DEG
 C Interval: 22.5DEG
 Test Speed: HIGH
 Temperature:24.6DEG
 Operators:Evan
 Test Date:2023-02-21

γ Range: 0 - 180DEG
 γ Interval: 1.0DEG
 Test System:EVERFINE GO-R5000_V2 SYSTEM V2.0.351
 Humidity:51%
 Test Distance:2.532m [K=1.0000]
 Remarks:

UTILIZATION FACTORS TABLE

Test:U:120.0V I:0.1361A P:15.33W PF:0.9386 Lamp Flux:974.532x1 lm		
NAME: LED luminaire	TYPE:N/A	WEIGHT:N/A
SPEC.:ASD-MPS-7D15CC-BK 3000K	DIM.: N/A	SERIAL No.:N/A
MFR.: ASD LIGHTING CORP	SUR.:N/A	Shielding Angle:N/A

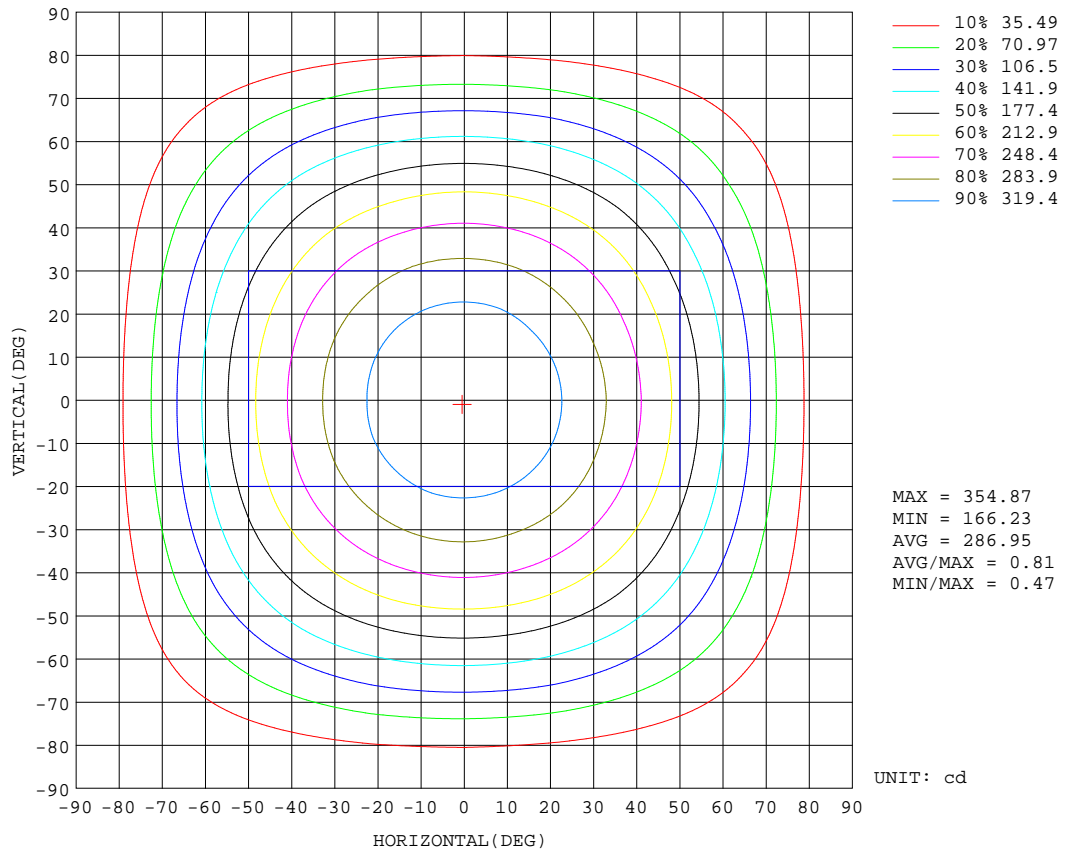
REFLECTANCE										
Ceiling	0.8	0.8	0.8	0.7	0.7	0.7	0.5	0.5	0.5	0
Walls	0.7	0.5	0.3	0.7	0.5	0.3	0.7	0.5	0.3	0
Working plane	0.2	0.2	0.2	0.2	0.2	0.2	0.2	0.2	0.2	0
ROOM INDEX	UTILIZATION FACTORS(PERCENT) $k(RI) \times RCR = 5$									
k = 0.60	58	47	40	57	46	39	56	46	39	33
0.80	68	57	49	67	56	49	65	55	49	42
1.00	77	66	58	75	65	58	73	66	58	51
1.25	84	73	66	82	73	66	80	71	65	58
1.50	89	79	72	87	78	72	84	76	70	63
2.00	95	87	81	94	86	80	90	84	78	71
2.50	99	92	86	97	90	85	93	88	83	75
3.00	103	96	91	100	94	89	96	91	87	79
4.00	107	101	97	104	99	95	100	96	92	84
5.00	109	104	100	107	102	99	102	99	96	87
ROOM INDEX	UF(total)									Direct
According to DIN EN 13032-2 2004			Suspended				SHRNOM = 1.25			

C Range: 0 - 360DEG
 C Interval: 22.5DEG
 Test Speed: HIGH
 Temperature:24.6DEG
 Operators:Evan
 Test Date:2023-02-21

γ Range: 0 - 180DEG
 γ Interval: 1.0DEG
 Test System:EVERFINE GO-R5000_V2 SYSTEM V2.0.351
 Humidity:51%
 Test Distance:2.532m [K=1.0000]
 Remarks:

ISOCANDELA DIAGRAM

Test:U:120.0V I:0.1361A P:15.33W PF:0.9386 Lamp Flux:974.532x1 lm		
NAME: LED luminaire	TYPE:N/A	WEIGHT:N/A
SPEC.:ASD-MPS-7D15CC-BK 3000K	DIM.: N/A	SERIAL No.:N/A
MFR.:ASD LIGHTING CORP	SUR.:N/A	Shielding Angle:N/A

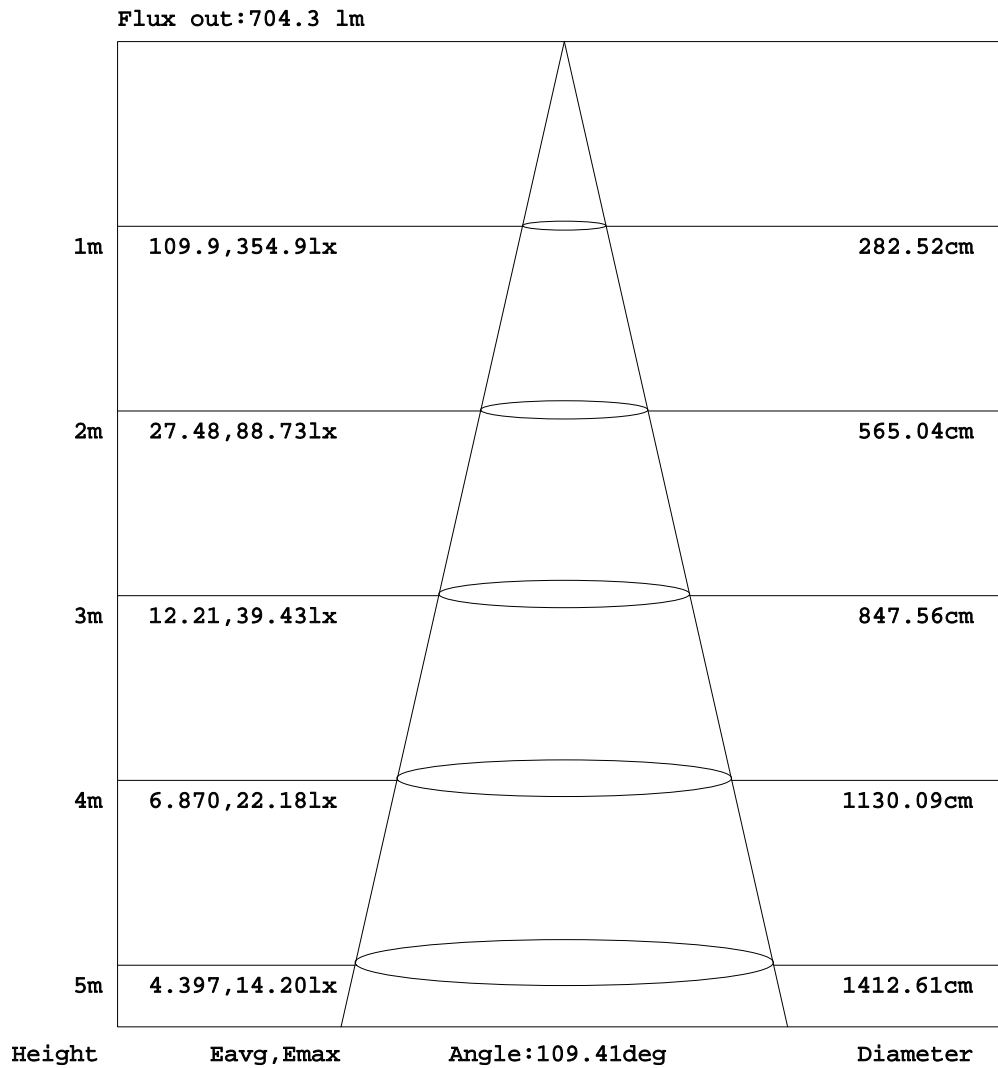


C Range: 0 - 360DEG
 C Interval: 22.5DEG
 Test Speed: HIGH
 Temperature:24.6DEG
 Operators:Evan
 Test Date:2023-02-21

γ Range: 0 - 180DEG
 γ Interval: 1.0DEG
 Test System:EVERFINE GO-R5000_V2 SYSTEM V2.0.351
 Humidity:51%
 Test Distance:2.532m [K=1.0000]
 Remarks:

AAI Figure

Test:U:120.0V I:0.1361A P:15.33W PF:0.9386 Lamp Flux:974.532x1 lm		
NAME: LED luminaire	TYPE:N/A	WEIGHT:N/A
SPEC.:ASD-MPS-7D15CC-BK 3000K	DIM.: N/A	SERIAL No.:N/A
MFR.: ASD LIGHTING CORP	SUR.:N/A	Shielding Angle:N/A



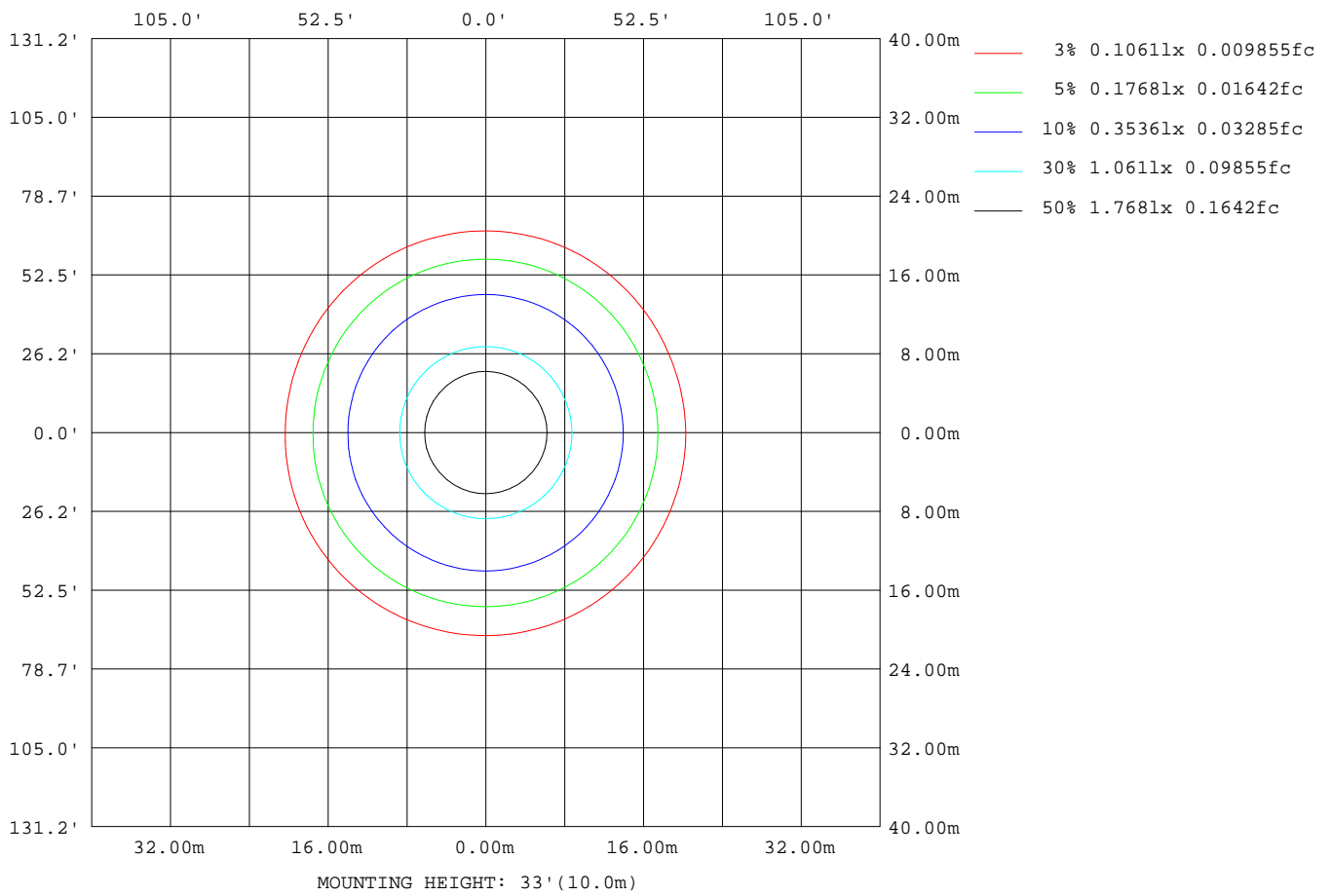
Note:The Curves indicate the illuminated area and the average illumination when the luminaire is at different distance.

C Range: 0 - 360DEG
 C Interval: 22.5DEG
 Test Speed: HIGH
 Temperature:24.6DEG
 Operators:Evan
 Test Date:2023-02-21

γ Range: 0 - 180DEG
 γ Interval: 1.0DEG
 Test System:EVERFINE GO-R5000_V2 SYSTEM V2.0.351
 Humidity:51%
 Test Distance:2.532m [K=1.0000]
 Remarks:

ISOLUX DIAGRAM

Test:U:120.0V I:0.1361A P:15.33W PF:0.9386 Lamp Flux:974.532x1 lm		
NAME: LED luminaire	TYPE:N/A	WEIGHT:N/A
SPEC.:ASD-MPS-7D15CC-BK 3000K	DIM.: N/A	SERIAL No.:N/A
MFR.: ASD LIGHTING CORP	SUR.:N/A	Shielding Angle:N/A



C Range: 0 - 360DEG
 C Interval: 22.5DEG
 Test Speed: HIGH
 Temperature:24.6DEG
 Operators:Evan
 Test Date:2023-02-21

γ Range: 0 - 180DEG
 γ Interval: 1.0DEG
 Test System:EVERFINE GO-R5000_V2 SYSTEM V2.0.351
 Humidity:51%
 Test Distance:2.532m [K=1.0000]
 Remarks:

LED Avg.L Report

Test:U:120.0V I:0.1361A P:15.33W PF:0.9386 Lamp Flux:974.532x1 lm		
NAME: LED luminaire	TYPE:N/A	WEIGHT:N/A
SPEC.:ASD-MPS-7D15CC-BK 3000K	DIM.: N/A	SERIAL No.:N/A
MFR.:ASD LIGHTING CORP	SUR.:N/A	Shielding Angle:N/A

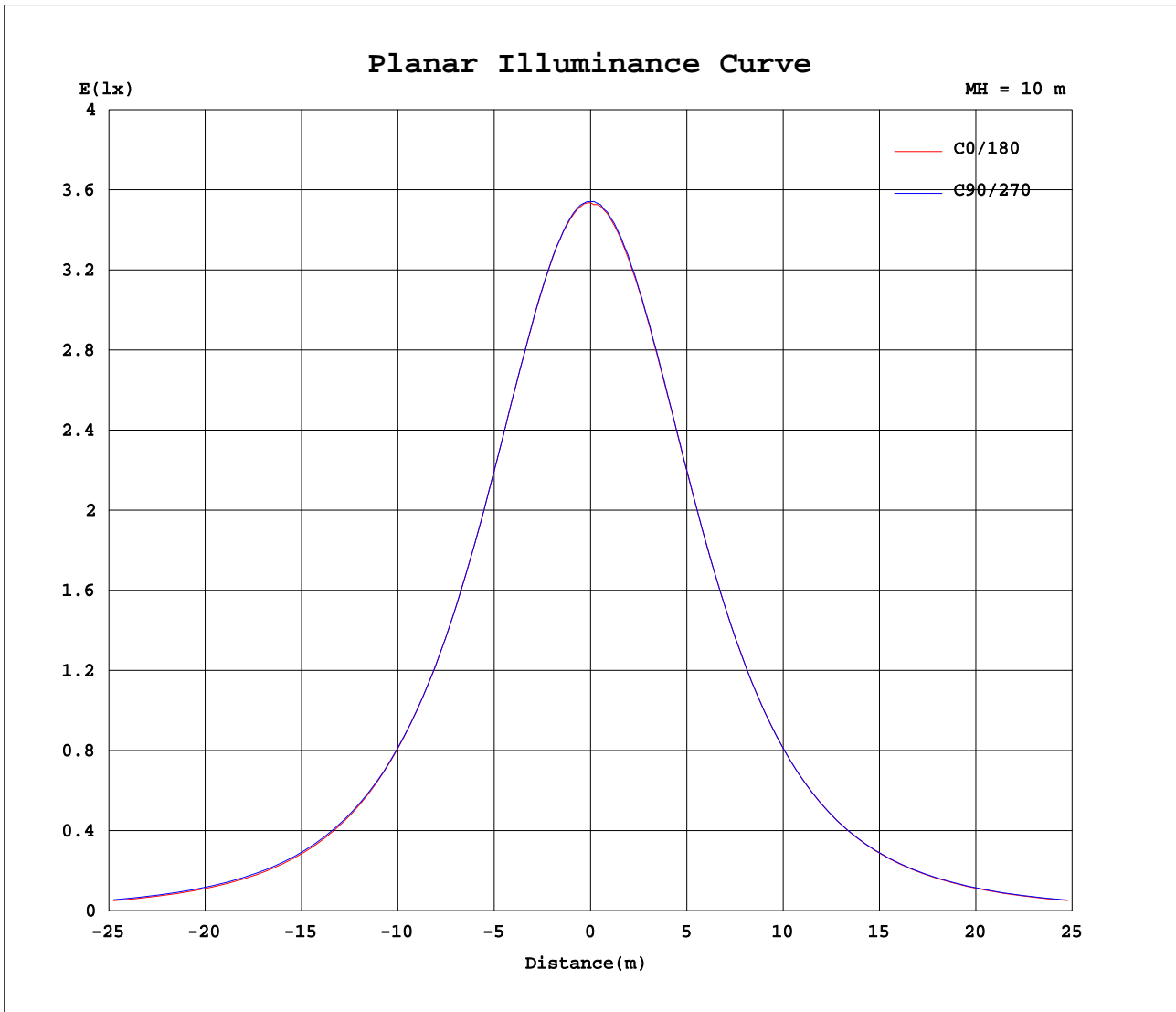
AvgL	cd/m2
L_0~180(65)av	10682
L_0~180(75)av	8543
L_0~180(85)av	4055
L_90~270(65)av	11129
L_90~270(75)av	9494
L_90~270(85)av	6281
L_45(65)av	10924
L_45(75)av	8963
L_45(85)av	4719

Standard: GB/T 29293-2012

C Range: 0 - 360DEG
 C Interval: 22.5DEG
 Test Speed: HIGH
 Temperature:24.6DEG
 Operators:Evan
 Test Date:2023-02-21

γ Range: 0 - 180DEG
 γ Interval: 1.0DEG
 Test System:EVERFINE GO-R5000_V2 SYSTEM V2.0.351
 Humidity:51%
 Test Distance:2.532m [K=1.0000]
 Remarks:

Planar Illuminance Curve



C Range: 0 - 360DEG
 C Interval: 22.5DEG
 Test Speed: HIGH
 Temperature: 24.6DEG
 Operators: Evan
 Test Date: 2023-02-21

γ Range: 0 - 180DEG
 γ Interval: 1.0DEG
 Test System: EVERFINE GO-R5000_V2 SYSTEM V2.0.351
 Humidity: 51%
 Test Distance: 2.532m [K=1.0000]
 Remarks:

LUMINOUS DISTRIBUTION INTENSITY DATA

Test:U:120.0V I:0.1361A P:15.33W PF:0.9386 Lamp Flux:974.532x1 lm		
NAME: LED luminaire	TYPE:N/A	WEIGHT:N/A
SPEC.:ASD-MPS-7D15CC-BK 3000K	DIM.: N/A	SERIAL No.:N/A
MFR.: ASD LIGHTING CORP	SUR.:N/A	Shielding Angle:N/A

Table--1

UNIT: cd

C(DEG) γ (DEG)	0	22.5	45	67.5	90	112.5	135	157.5	180	202.5	225	247.5	270	292.5	315	337.5			
0	354	354	354	354	354	354	354	354	354	354	354	354	354	354	354	354			
5	352	352	352	353	353	353	353	352	352	352	352	352	353	353	352	353			
10	347	347	347	347	347	347	347	347	347	347	347	347	347	347	347	347			
15	339	339	338	338	339	339	339	339	339	339	339	339	339	339	338	338			
20	327	327	326	326	327	327	327	327	327	326	326	327	327	327	326	326			
25	312	312	311	312	312	312	312	313	312	312	313	313	312	312	311	311			
30	295	295	294	294	295	295	295	296	295	294	295	295	295	294	294	293			
35	275	275	274	275	275	275	276	276	275	275	275	275	275	275	274	274			
40	254	253	253	253	254	254	254	254	253	253	253	253	253	252	252	251			
45	229	229	229	229	230	230	230	231	230	230	230	229	229	229	228	228			
50	203	203	204	204	205	205	205	206	204	204	204	204	204	203	202	201			
55	174	175	177	178	178	179	179	179	176	176	177	177	177	176	175	173			
60	145	146	148	150	151	151	151	150	147	147	149	149	149	148	146	144			
65	115	116	118	121	122	122	121	120	116	116	118	119	119	118	115	113			
70	84.8	85.7	88.5	92.5	93.3	93.7	91.7	89.6	86.3	86.2	88.0	90.2	89.8	89.1	85.7	83.1			
75	55.9	56.7	59.5	63.0	64.6	64.9	62.6	60.3	57.3	57.3	58.9	61.0	61.2	60.0	56.7	54.4			
80	29.4	30.4	32.6	35.8	37.9	37.5	35.3	33.6	31.2	31.2	32.3	34.2	35.0	33.3	30.3	28.6			
85	8.22	8.89	10.5	13.0	15.2	14.4	12.6	11.3	9.88	9.77	10.3	11.7	12.8	11.1	8.67	7.40			
90	0.06	0.06	0.07	0.07	0.12	0.12	0.07	0.09	0.01	0.01	0.02	0.02	0.02	0.02	0.02	0.02			
95	0.06	0.07	0.07	0.07	0.07	0.07	0.07	0.06	0.02	0.02	0.02	0.02	0.02	0.02	0.02	0.02			
100	0.08	0.08	0.10	0.10	0.09	0.10	0.10	0.08	0.03	0.03	0.04	0.04	0.03	0.04	0.05	0.03			
105	0.09	0.09	0.11	0.10	0.10	0.10	0.11	0.09	0.05	0.05	0.05	0.05	0.05	0.05	0.05	0.04			
110	0.10	0.10	0.11	0.11	0.10	0.11	0.12	0.10	0.06	0.06	0.06	0.07	0.06	0.07	0.07	0.06			
115	0.12	0.12	0.12	0.12	0.12	0.12	0.13	0.13	0.08	0.07	0.08	0.08	0.07	0.08	0.08	0.08			
120	0.13	0.14	0.14	0.14	0.14	0.14	0.14	0.16	0.09	0.09	0.09	0.09	0.09	0.09	0.10	0.10			
125	0.17	0.16	0.17	0.17	0.17	0.17	0.18	0.17	0.12	0.12	0.11	0.11	0.11	0.11	0.11	0.12			
130	0.20	0.20	0.20	0.21	0.21	0.22	0.22	0.19	0.15	0.14	0.14	0.14	0.13	0.13	0.13	0.14			
135	0.22	0.24	0.26	0.25	0.27	0.27	0.27	0.25	0.16	0.16	0.16	0.16	0.16	0.15	0.15	0.16			
140	0.30	0.31	0.32	0.33	0.34	0.34	0.33	0.32	0.19	0.16	0.19	0.18	0.18	0.18	0.17	0.17			
145	0.37	0.39	0.39	0.43	0.43	0.43	0.39	0.39	0.21	0.21	0.20	0.21	0.21	0.21	0.20	0.20			
150	0.43	0.46	0.46	0.46	0.48	0.47	0.47	0.46	0.22	0.22	0.21	0.22	0.23	0.23	0.22	0.21			
155	0.48	0.50	0.52	0.55	0.54	0.54	0.52	0.53	0.25	0.24	0.25	0.24	0.25	0.26	0.25	0.26			
160	0.54	0.55	0.58	0.59	0.58	0.57	0.55	0.55	0.26	0.27	0.26	0.25	0.28	0.28	0.26	0.31			
165	0.56	0.54	0.57	0.58	0.59	0.57	0.56	0.52	0.30	0.30	0.27	0.30	0.30	0.29	0.31	0.34			
170	0.53	0.52	0.51	0.52	0.53	0.51	0.51	0.52	0.33	0.33	0.31	0.31	0.32	0.33	0.33	0.35			
175	0.51	0.51	0.49	0.46	0.46	0.46	0.47	0.48	0.37	0.37	0.36	0.35	0.36	0.37	0.38	0.40			
180	0.40	0.40	0.39	0.37	0.38	0.40	0.42	0.43	0.42	0.42	0.41	0.39	0.38	0.39	0.40	0.42			

C Range: 0 - 360DEG
 C Interval: 22.5DEG
 Test Speed: HIGH
 Temperature:24.6DEG
 Operators:Evan
 Test Date:2023-02-21

γ Range: 0 - 180DEG
 γ Interval: 1.0DEG
 Test System:EVERFINE GO-R5000_V2 SYSTEM V2.0.351
 Humidity:51%
 Test Distance:2.532m [K=1.0000]
 Remarks: