



LED BACK-LIT FLAT PANEL

► **DESIGN** - LED BACK-LIT FLAT PANEL comes with a durable commercial grade housing resistant to rust and impact, anti-corrosion aluminum seamless rigid frame, anti-glare PC lens, and driver with circuit overload, short circuit, and low-voltage protection, making it both safe and reliable. It is designed to operate on 120-277V circuits.

► **DIMMING** - Smooth 0-10V dimming capabilities ranging from 10% to 100% with modern LED dimmers allow you to control the look and feel of your space.

► **COLOR AND POWER SELECTABLE** - You can choose either a 3,000K warm white, 3,500K neutral white, 4,000K cool white or 5,000K daylight color temperature, and change the power with a simple switch.

► **2.4G WIRELESS CONTROL** - Dimmable and CCT tunable via a wireless handheld or wall-mounted remote, letting you choose either a 3,000K warm white, 3,500K neutral white, 4,000K cool white or 5,000K daylight color temperature.

► **MOTION SENSOR** - The built-in microwave motion sensor will turn off the fixture automatically when no motion is detected. The sensor can be adjusted using the handheld remote.

► **BATTERY BACK-UP** - The built-in battery back-up provide 90 minutes of power in case of emergency.

► **INSTALLATION** - This fixture has three different mounting options: recessed, suspended, and surface.

► **APPLICATION** - Perfect commercial or industrial solution for offices, hospitals, schools, retail, workshops, and many other applications. It is also Damp Locations rated.

► **ADVANTAGES** - With calculated lifespan up to 179,000 hours, these fixtures are made to last decades under normal operation! ASD provides a 5-year limited warranty along with UL and DLC Premium certifications to guarantee top quality products and safety!

Catalog number	
Notes	
Type	



Model	Type	Watts	Voltage	Dimmable	Lumens	CCT	Dimensions (LxWxH)	Option
ASD-BLP-22D2540-PRM	2x2	25W	120-277 V	0-10 V	3,225 lm	4,000 K	23-3/4" x 23-3/4" x 1-1/4"	-
ASD-BLP-22D2550-PRM	2x2	25W	120-277 V	0-10 V	3,250 lm	5,000 K	23-3/4" x 23-3/4" x 1-1/4"	-
ASD-BLP-24D3240-PRM	2x4	32W	120-277 V	0-10 V	4,384 lm	4,000 K	47-3/4" x 23-3/4" x 1-1/4"	-
ASD-BLP-24D4040-PRM	2x4	40W	120-277 V	0-10 V	5,160 lm	4,000 K	47-3/4" x 23-3/4" x 1-1/4"	-
ASD-BLP-24D4050-PRM	2x4	40W	120-277 V	0-10 V	5,200 lm	5,000 K	47-3/4" x 23-3/4" x 1-1/4"	-
ASD-BLP-24D5040-PRM	2x4	50W	120-277 V	0-10 V	6,450 lm	4,000 K	47-3/4" x 23-3/4" x 1-1/4"	-
ASD-BLP-14A35AC-PRM	1x4	20/25/30/35W	120-277 V	0-10 V	2,791/3,510/4,071/4,388 lm	4CCT (3,000/3,500/4,000/5,000 K)	47-3/4" x 11-15/16" x 1-7/16"	-
ASD-BLP-22D25AC-PRM	2x2	25W	120-277 V	0-10 V	3,250/3,617/3,472 lm	3CCT (3,500/4,000/5,000 K)	23-3/4" x 23-3/4" x 1-7/16"	-
ASD-BLP-24D40AC-PRM	2x4	40W	120-277 V	0-10 V	5,200/5,750/5,605 lm	3CCT (3,500/4,000/5,000 K)	47-3/4" x 23-3/4" x 1-7/16"	-
BLP-CC WITH COLOR CHANGING								
ASD-BLP-22D35-CC-PRM	2x2	35W	120-277 V	0-10 V	4,550/4,787/4,925/4,822 lm	3,000-5,000 K	23-3/4" x 23-3/4" x 1-7/16"	Color changing
ASD-BLP-24D50-CC-PRM	2x4	50W	120-277 V	0-10 V	6,500/7,158/7,139/7,093 lm	3,000-5,000 K	47-3/4" x 23-3/4" x 1-7/16"	Color changing
ASD-RC-2.4G-H	Handheld remote for color changing						6" x 1-3/4" x 5/8"	-
ASD-RC-2.4G-W	Wall-mount remote for color changing						4-1/8" x 1-5/8" x 1-1/2"	-
BLP-MS WITH MOTION SENSOR								
ASD-BLP-22A35AC-MS-PRM	2x2	20/25/30/35W	120-277 V	0-10 V	2,957/3,562/4,175/4,822 lm	4CCT (3,000/3,500/4,000/5,000 K)	23-3/4" x 23-3/4" x 2-3/4"	Motion sensor
ASD-BLP-24A50AC-MS-PRM	2x4	35/40/45/50W	120-277 V	0-10 V	5,202/5,896/6,501/7,093 lm	4CCT (3,000/3,500/4,000/5,000 K)	47-3/4" x 23-3/4" x 2-3/4"	Motion sensor
ASD-CELP02H-MS	Remote control for motion sensor						4-5/8" x 2-3/16" x 5/8"	-
BLP-EM WITH BATTERY BACK-UP								
ASD-BLP-22D25AC-EM-PRM	2x2	25W	120-277 V	0-10 V	3,250/3,617/3,472 lm	3CCT (3,500/4,000/5,000 K)	23-3/4" x 23-3/4" x 2-3/4"	8W Battery back-up
ASD-BLP-24D40AC-EM-PRM	2x4	40W	120-277 V	0-10 V	5,200/5,750/5,605 lm	3CCT (3,500/4,000/5,000 K)	47-3/4" x 23-3/4" x 2-3/4"	8W Battery back-up

For most up-to-date spec sheets please refer to asd-lighting.com

ASD LIGHTING CORP

E-mail: orders@asd-lighting.com | Web site: www.asd-lighting.com





LED BACK-LIT FLAT PANEL

PRODUCT SPECIFICATIONS:

Construction & Materials						
Housing	Iron, PC, Aluminum					
Lens	Translucent white					
Finish	White					
Weight	ASD-BLP-22D2540-PRM	4.4 lbs (2 kg)	ASD-BLP-24D5040-PRM	9 lbs (4.1 kg)	ASD-BLP-24D50-CC-PRM	18.5 lbs (8.4 kg)
	ASD-BLP-22D2550-PRM		ASD-BLP-14A35AC-PRM	9.9 lbs (4.5 kg)	ASD-BLP-22A35AC-MS-PRM	10.6 lbs (4.8 kg)
	ASD-BLP-24D3240-PRM	9 lbs (4.1 kg)	ASD-BLP-22D25AC-PRM	8.8 lbs (4 kg)	ASD-BLP-24A50AC-MS-PRM	23.1 lbs (10.5 kg)
	ASD-BLP-24D4040-PRM		ASD-BLP-24D40AC-PRM	18.1 lbs (8.2 kg)	ASD-BLP-22D25AC-EM-PRM	15.4 lbs (7 kg)
ASD-BLP-24D4050-PRM		ASD-BLP-22D35-CC-PRM	8.8 lbs (4 kg)	ASD-BLP-24D40AC-EM-PRM	24.7 lbs (11.2 kg)	
Environmental system						
Work environment	Suitable for Damp Locations					
Operating temperature	14°F to 104°F (-10°C to 40°C)					
L-70 Life	R > 60,000 hrs; C > 179,000 hrs					
Optical system						
Luminous flux	ASD-BLP-22D2540-PRM	3,225 lm	ASD-BLP-24D5040-PRM	6,450 lm	ASD-BLP-24D50-CC-PRM	6,500/7,158/7,139/7,093 lm
	ASD-BLP-22D2550-PRM	3,250 lm	ASD-BLP-14A35AC-PRM	2,791/3,510/4,071/4,388 lm	ASD-BLP-22A35AC-MS-PRM	2,957/3,562/4,175/4,822 lm
	ASD-BLP-24D3240-PRM	4,384 lm	ASD-BLP-22D25AC-PRM	3,250/3,617/3,472 lm	ASD-BLP-24A50AC-MS-PRM	5,202/5,896/6,501/7,093 lm
	ASD-BLP-24D4040-PRM	5,160 lm	ASD-BLP-24D40AC-PRM	5,200/5,750/5,605 lm	ASD-BLP-22D25AC-EM-PRM	3,250/3,617/3,472 lm
ASD-BLP-24D4050-PRM	5,200 lm	ASD-BLP-22D35-CC-PRM	4,550/4,787/4,925/4,822 lm	ASD-BLP-24D40AC-EM-PRM	5,200/5,750/5,605 lm	
Color temperature	4,000 K; 5,000 K					
	3CCT switch (3,500/4,000/5,000 K), 5,000 K by default					
	4CCT switch (3,000/3,500/4,000/5,000 K), 5,000 K by default					
	From 3,000 K to 5,000 K with remote control					
CRI	> 80					
Electrical system						
Input voltage	120-277 V					
Max input current	ASD-BLP-22D2540-PRM	0.3 A	ASD-BLP-24D5040-PRM	0.4 A	ASD-BLP-24D50-CC-PRM	0.5 A
	ASD-BLP-22D2550-PRM		ASD-BLP-14A35AC-PRM	0.35 A	ASD-BLP-22A35AC-MS-PRM	0.35 A
	ASD-BLP-24D3240-PRM	0.4 A	ASD-BLP-22D25AC-PRM	0.32 A	ASD-BLP-24A50AC-MS-PRM	0.5 A
	ASD-BLP-24D4040-PRM		ASD-BLP-24D40AC-PRM	0.5 A	ASD-BLP-22D25AC-EM-PRM	0.32 A
ASD-BLP-24D4050-PRM		ASD-BLP-22D35-CC-PRM	0.35 A	ASD-BLP-24D40AC-EM-PRM	0.5 A	
Inrush current (Action time)	ASD-BLP-22D2540-PRM	50 A (0.5 S)	ASD-BLP-24D5040-PRM	50 A (0.5 S)	ASD-BLP-24D50-CC-PRM	50 A (0.5 S)
	ASD-BLP-22D2550-PRM		ASD-BLP-14A35AC-PRM		ASD-BLP-22A35AC-MS-PRM	
	ASD-BLP-24D3240-PRM		ASD-BLP-22D25AC-PRM	ASD-BLP-24A50AC-MS-PRM	60 A (0.5 S)	
	ASD-BLP-24D4040-PRM		ASD-BLP-24D40AC-PRM	ASD-BLP-22D25AC-EM-PRM		
ASD-BLP-24D4050-PRM	ASD-BLP-22D35-CC-PRM		ASD-BLP-24D40AC-EM-PRM			
Off state power	0W					
Power consumption	ASD-BLP-22D2540-PRM	25W	ASD-BLP-24D5040-PRM	50W	ASD-BLP-24D50-CC-PRM	50W
	ASD-BLP-22D2550-PRM		ASD-BLP-14A35AC-PRM	20/25/30/35W	ASD-BLP-22A35AC-MS-PRM	20/25/30/35W
	ASD-BLP-24D3240-PRM	40W	ASD-BLP-22D25AC-PRM	25W	ASD-BLP-24A50AC-MS-PRM	35/40/45/50W
	ASD-BLP-24D4040-PRM		ASD-BLP-24D40AC-PRM	40W	ASD-BLP-22D25AC-EM-PRM	25W
ASD-BLP-24D4050-PRM		ASD-BLP-22D35-CC-PRM	35W	ASD-BLP-24D40AC-EM-PRM	40W	
Power factor	> 0.9					
Output voltage	38-52 V					
Max output current	ASD-BLP-22D2540-PRM	0.55 A	ASD-BLP-24D5040-PRM	0.75 A	ASD-BLP-24D50-CC-PRM	0.95 A
	ASD-BLP-22D2550-PRM		ASD-BLP-14A35AC-PRM	0.65 A	ASD-BLP-22A35AC-MS-PRM	0.65 A
	ASD-BLP-24D3240-PRM	0.65 A	ASD-BLP-22D25AC-PRM	0.47 A	ASD-BLP-24A50AC-MS-PRM	0.95 A
	ASD-BLP-24D4040-PRM	0.75 A	ASD-BLP-24D40AC-PRM	0.78 A	ASD-BLP-22D25AC-EM-PRM	0.47 A
ASD-BLP-24D4050-PRM	ASD-BLP-22D35-CC-PRM		0.65 A	ASD-BLP-24D40AC-EM-PRM	0.78 A	
Surge protection DM/CM	1 kV / 2 kV					
Dimming compatible controls *				Regular and voluntary certifications		
Brand	Models			5-year limited warranty		
Maxxima	MEW-DM600LV			DesignLights Consortium (DLC) listed (Classification: Premium)		
Keygma	KGM-1A010V			Main: Indoor luminaires; General application: Troffer;		
Lutron	DVSTV-WH			Primary use: Luminaires for ambient lighting of Interior commercial spaces		
Leviton	IP710-DLZ			UL certified E473854		
Eaton	DF10P-C1					

* The list of dimmers is relevant for models without a motion sensor.

PACKAGE CONTENTS:

Description	Q-ty
LED Back-Lit Flat Panel	2
Box	1

For most up-to-date spec sheets please refer to asd-lighting.com

ASD LIGHTING CORP


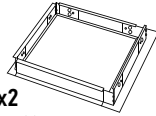
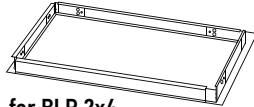
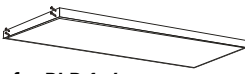
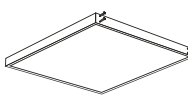
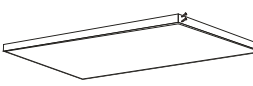
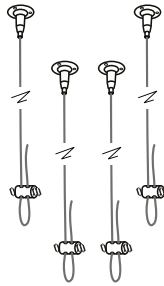



E-mail: orders@asd-lighting.com | Web site: www.asd-lighting.com





LED BACK-LIT FLAT PANEL

ACCESSORIES (sold separately):

Sheetrock mounting frame  for BLP 1x4 ASD-FDW-ELP14  for BLP 2x2 ASD-FDW-ELP22  for BLP 2x4 ASD-FDW-ELP24	Surface mounting low frame  for BLP 1x4 ASD-FELP14-L  for BLP 2x2 ASD-FELP22-L  for BLP 2x4 ASD-FELP24-L	Ceiling hanging set 39.37" ASD-CHS4 	Remote control for motion sensor ASD-CELP02H-MS 	Handheld remote for color changing ASD-RC-2.4G-H 	Wall-mount remote for color changing ASD-RC-2.4G-W 
---	--	--	---	---	---

ACCESSORY COMPATIBILITY LIST:

Accessories	Sheetrock mounting frame for 1x4 panels ASD-FDW-ELP14	Sheetrock mounting frame for 2x2 panels ASD-FDW-ELP22	Sheetrock mounting frame for 2x4 panels ASD-FDW-ELP24	Surface mounting low Frame for 1x4 panels ASD-FELP14-L	Surface mounting low Frame for 2x2 panels ASD-FELP22-L	Surface mounting low Frame for 2x4 panels ASD-FELP24-L	39.37" Ceiling hanging set ASD-CHS4	Remote control for motion sensor ASD-CELP02H-MS	Handheld remote for color changing ASD-RC-2.4G-H	Wall-mount remote for color changing ASD-RC-2.4G-W
ASD-BLP-22D2540-PRM		•			•		•			
ASD-BLP-22D2550-PRM		•			•		•			
ASD-BLP-24D3240-PRM			•			•	•			
ASD-BLP-24D4040-PRM			•			•	•			
ASD-BLP-24D4050-PRM			•			•	•			
ASD-BLP-24D5040-PRM			•			•	•			
ASD-BLP-14A35AC-PRM	•			•			•			
ASD-BLP-22D25AC-PRM		•			•		•			
ASD-BLP-24D40AC-PRM			•			•	•			
ASD-BLP-22D35-CC-PRM		•			•		•		•	•
ASD-BLP-24D50-CC-PRM			•			•	•		•	•
ASD-BLP-22A35AC-MS-PRM		•					•	•		
ASD-BLP-24A50AC-MS-PRM			•				•	•		
ASD-BLP-22D25AC-EM-PRM		•					•			
ASD-BLP-24D40AC-EM-PRM			•				•			

For most up-to-date spec sheets please refer to asd-lighting.com

ASD LIGHTING CORP

E-mail: orders@asd-lighting.com | Web site: www.asd-lighting.com

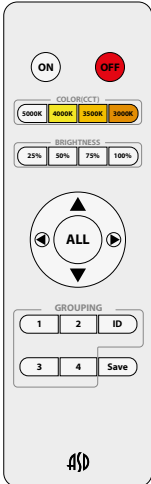




LED BACK-LIT FLAT PANEL

BUILT-IN COLOR CHANGING INFORMATION

HANDHELD REMOTE FOR COLOR CHANGING ASD-RC-2.4G-H sold separately:



ON OFF	ON Turn ON OFF Turn OFF Handheld remote controller cannot be used as a switch, it should be used together with the switch.					
ID	Pairing the light While holding the 'ID' button, power on your panels. Your panels should flash twice to indicate they are paired. You can pair several lights at once.					
ID + ▼	Disconnect remote from panels While holding the down arrow and the ID button, turn on your panels, this will disconnect them from your remote. Panels will flash twice to indicate they are no longer paired.					
1 2 3 4	Group selecting buttons To assign panels to a group you must first pair them with your remote. Once paired hold the # button you wish to assign to your panels. While the lights are off hold the # button and turn on your switch. Panels will turn on. Do not release the button until the panels flash one time. The flash may not occur until after 3 seconds of turning on the lights. If you release before the flash your groups will not be set up.					
Save	Setting default brightness and CCT To save the desired settings as a default, turn the panel to desired color temp and brightness. Then hold the Save button on the remote until the panels turn off. This will save the settings for future use.					
ALL	All groups selected					
5000K	5,000 K	4000K	4,000 K	3500K	3,500 K	3000K 3,000 K
25%	25 % brightness	50%	50 % brightness	75%	75 % brightness	100% 100 % brightness
▼	Decrease brightness	▲	Increase brightness	◀	Decrease color temperature	▶ Increase color temperature

- ▶ After turned on, the light will automatically detect the 0-10 V dimmer to set brightness, it will get 100 % brightness if no dimming signal to input the light.
- ▶ If use 0-10 V dimmer to control, light brightness will convert to 0-10 V dimmer's current brightness setting.
- ▶ If using remote controller to control, light brightness will only change from its current brightness rather than remote controller's current brightness setting.

WALL-MOUNT REMOTE FOR COLOR CHANGING ASD-RC-2.4G-W sold separately:



ON OFF	ON Turn on OFF Turn off The wall-type remote controller cannot be used directly as a switch, it should be used together with the switch.
ON + OFF	Lights code matching combination keys Press the ON + OFF buttons simultaneously to keep the remote's indicator light always on. Turn on the light for 2 Seconds then release the combination keys to match the code. Matching code with many lights at the same time is available.
H L	Brightness adjustment.
CCT	Press the CCT button to change the color temperature to 3,000 K/3,500 K/4,000 K/5,000 K. After shutting down it will save the current color temperature.
ON	Setting default brightness and CCT To save the desired settings as a default, first tune the panel to desired color temp and brightness. Then hold the ON button on the wall remote until the panels turn off. This will save your setting for future use.

Matching methods for the handheld and wall-mount remotes:

NO	Grouping	Handheld remote	Wall-mount remote
1	1	1 + ID	On + CCT
2	2	2 + ID	On + CCT
3	3	3 + ID	On + CCT
4	4	4 + ID	On + CCT
5	All	All + ID	On + CCT

- ▶ After 10 Seconds of each operation, it will enter the standby power saving mode. If you need to adjust again, press the ON button and wait for the indicator light to flash.

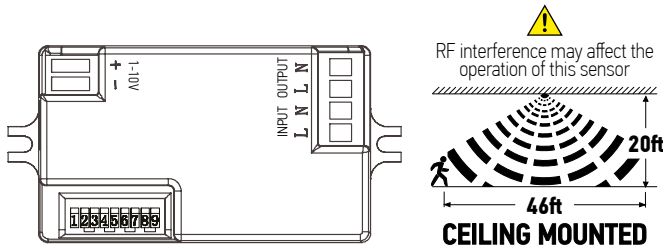
For most up-to-date spec sheets please refer to asd-lighting.com



LED BACK-LIT FLAT PANEL

BUILT-IN MOTION SENSOR INFORMATION

- ▶ With sufficient daylight, even when motion is detected, light remains OFF.
- ▶ With insufficient daylight, when motion is detected the light turns ON.
- ▶ After last detection, the light will be dimmed down to the stand-by dimming level (10 %, 20 %, 30 % or 50 %) after holdtime.
- ▶ After the stand-by period, the light turns OFF.



DEFAULT SETTING:

Detection area	Hold time	Daylight sensor	Stand-by period	Stand-by dim level
100 %	10 min	Disable	0 s	10 %

Use the following DIP switch settings to set dimming levels, hold times, standby periods, detection area and daylight sensor mode. Select the combination of switches to reach the desired sensor settings. Each switch will indicate ON when moved UP.

ON	1		
I	ON		100 %
II	-		50 %
ON	2	3	
I	ON	ON	5 s
II	-	ON	30 s
III	ON	-	1 min
IV	-	-	10 min
ON	4	5	
I	ON	ON	disable
II	-	ON	50 lux (4.7 fc)
III	ON	-	10 lux (0.9 fc)
IV	-	-	2 lux (0.2 fc)
ON	6	7	
I	ON	ON	0 s
II	-	ON	30 s
III	ON	-	20 min
IV	-	-	+ ∞
ON	8	9	
I	ON	ON	10 %
II	-	ON	20 %
III	ON	-	30 %
IV	-	-	50 %

Detection area:

Detection area means detection coverage. It can be adjusted by combining DIP switches for specific application.

Hold time:

Hold-time means the time period the light will be ON after the last detection.

Daylight sensor:

Daylight detection prior to motion detection. Set threshold for specific needs. If Disabled, only motion sensor works.

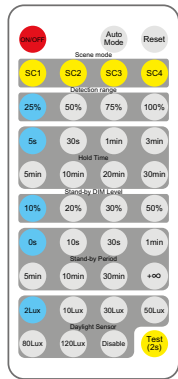
Stand-by period:

This is the time period the light keeps dimming down after the last detection.

Stand-by dimming period:

This is the dimming level the light keeps during stand-by period.

REMOTE CONTROL ASD-CELP02H-MS sold separately:



Remote control range is 10 ft, every fixture needs to be set up separately

ON / OFF	Press the "ON/OFF" button, the light stays permanently on or off. * Press "Auto Mode", "Reset" or "Scene mode" buttons to quit from this mode.				
Auto mode	Press "Auto Mode" button, the sensor starts to work and all settings remain the same before the light gets switched on/off.				
Reset	Press "Reset" button, products with DIP switch will be controlled by DIP switches				
Scene mode	Detection area	Hold time	Daylight threshold	Stand-by period	Stand-by dimming level
SC1	100 %	30 s	2 lux (0.2 fc)	1 min	10 %
SC2	100 %	5 min	10 lux (0.9 fc)	10 min	10 %
SC3	100 %	10 min	50 lux (4.7 fc)	30 min	10 %
SC4	100 %	30 min	disable	+ ∞	10 %
Test (2s)	The button "Test (2 S)" is for testing purposes. After pressing this button, the sensor goes to test mode (hold time is only 2 s) automatically, stand-by period and daylight sensor are disabled. This mode can be ended by pressing "reset", "Auto mode" "scene mode" or "hold time". The sensor setting is changed accordingly. Brightness settings: Disable Test mode (can press any key to exit this mode).				
On/off control	There are 4 fixed scene mode programs built into the remote control to choose for different applications.	Daylight threshold	Press the button "daylight sensor" to set daylight threshold as 2 lux (0.2 fc)/10 lux (0.9 fc)/30 lux (2.7 fc)/50 lux (4.7 fc)/80 lux (7.4 fc)/120 lux (11.2 fc)/disable.		
Detection area	Press the button "detection range" to set detection range as 100 %/75 %/50 %/10 %.	Stand-by period	Press the button "stand-by period" to set stand-by period as 0 s/10 s/30 s/1 min/5 min/10 min/30 min/+ ∞. Note: "0 s" means on/off control; "+ ∞" means bi-level dimming control.		
Hold time	Press the button "hold-time" to set hold-time as 5 S/30 S/1 min/3 min/5 min/10 min/20 min/30 min.	Stand-by dimming	Press the button "stand-by dimming level" to set the stand-by dimming level as 10 %/20 %/30 %/50 %.		

For most up-to-date spec sheets please refer to asd-lighting.com



LED BACK-LIT FLAT PANEL


BUILT-IN BATTERY BACK-UP INFORMATION



Model	Battery watts	Lumens in emergency mode	Battery capacity	Emergency mode	Charging time
ASD-BLP-22D25AC-EM-PRM	8W	1,158 lm	2,600 mA * 4	≥ 90 minutes	≥ 24 hours
ASD-BLP-24D40AC-EM-PRM	8W	1,158 lm	2,600 mA * 4	≥ 90 minutes	≥ 24 hours

- ▶ Has a self-checking function
- ▶ AC Operation, indicator light will stay on
- ▶ Emergency Operation, indicator light will flash slowly (light on for 2 seconds, light off for 2 seconds)
- ▶ In a failure, indicator light will flash quickly (light on for 0.2 seconds, light off for 0.2 seconds)
- ▶ In order to test the Battery back-up, press test switch one time to switch to emergency mode. Press one more time to get back to AC mode

STANDARD OPERATION DISPLAY STATUS:

Operating condition	 Green LED
Charging	ON
Emergency mode	Flash slowly
Test failure	Flash quickly

INSTALLATION GUIDE

IMPORTANT SAFETY INFORMATION:

Please read all the instructions below before installation.

- ▶ Make sure that the supply voltage corresponds to the rated product voltage.
- ▶ The product must be installed by a qualified electrician in accordance with the National Electrical Code and corresponding local codes.
- ▶ If the product is damaged, do not use it.

WARNING

RISK OF PERSONAL INJURY – READ and follow all WARNINGS and installation instructions. Keep or give to the owner for future reference.

Risk of cuts: Wear gloves to prevent cuts or abrasions when removing from carton, handling, installing, and maintaining this product.

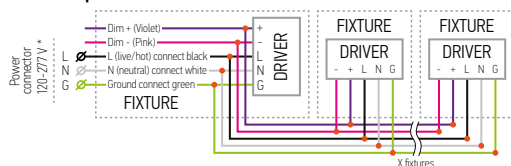
Risk of electric shock: This product must be installed in accordance with the applicable installation code by a person familiar with the construction and operation of the product and the hazards involved.

Risk of Fire: Minimum 194°F supply conductors. Consult a qualified electrician to ensure correct branch circuit conductor.

ASD® assumes no responsibility for claims arising out of improper or careless Installation or handling of this product.

ELECTRICAL SCHEMATIC DIAGRAM:

BLP multiple fixture connection

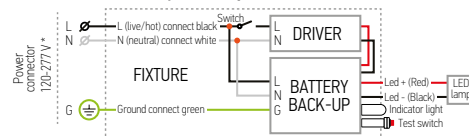


Linking limits: up to 20 panels can be linked together. Total power of LED Panels shall not exceed the wattage of dimmer.

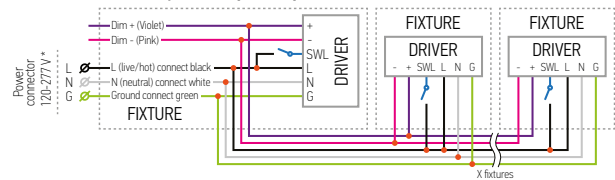
* The regular voltage 120-277V fixtures can be alternatively powered without neutral by two-phase circuit with phase-to-phase voltage of 208V (L1-120V & L2-120V).


WARNING: Phase-to-phase voltage should be less than 277V (160V per each phase) and more than 120V (70V per each phase)! Do not confuse Regular Voltage fixtures of 120-277V with High Voltage ones of 277-480V!

BLP-EM with battery back-up

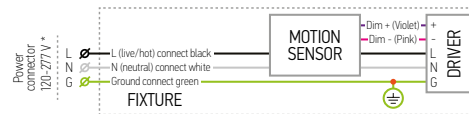


BLP-EM with battery back-up multiple fixture connection

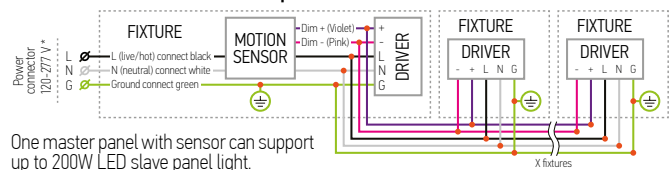


Linking limits: up to 20 panels can be linked together. Total power of LED Panels shall not exceed the wattage of dimmer.  Connect the battery plug before wiring.

BLP-MS with motion sensor



BLP-MS with motion sensor multiple fixture connection



One master panel with sensor can support up to 200W LED slave panel light.

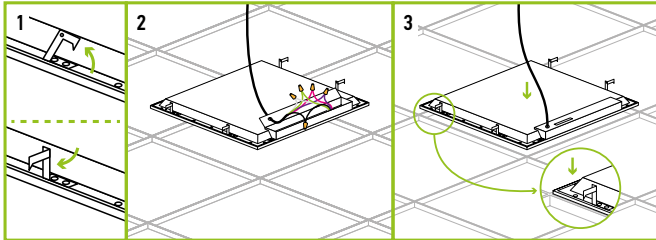
For most up-to-date spec sheets please refer to asd-lighting.com



LED BACK-LIT FLAT PANEL

RECESSED MOUNT:

1. Lift all mounting clips along the edges of the panel. Turn the mounting clip head.
2. Connect the wires into the junction box of the panel matching colors N, L and G using nuts.
3. Adjust into place. Ensure the clips are fastened to the ceiling's T-BAR/T-GRID.



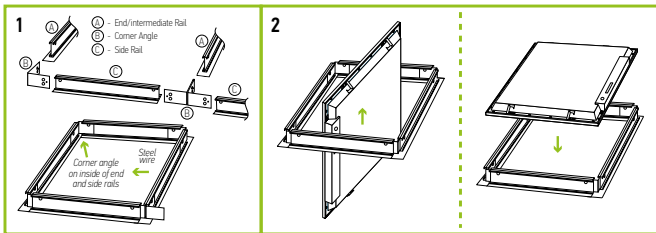
RECESSED SHEETROCK MOUNT

ASD-FDW-ELP14 ASD-FDW-ELP22 ASD-FDW-ELP24

sold separately:

1. Following the picture below, slide part B into the inboard side of parts C and A as shown.
2. Place assembled frame into the ceiling opening and add steel wires for support as pictured below. After wiring fixture, carefully slide it through ceiling opening, rotate and drop fixture into place.

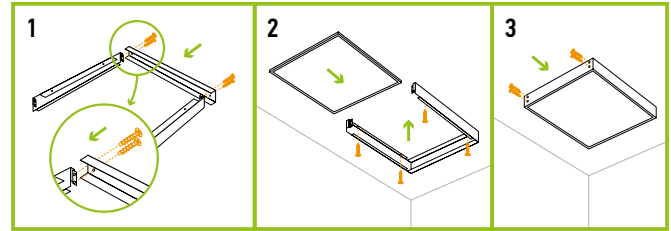
Note: For best results, attach supporting steel wires going into the ceiling to sides of frame after assembly. End rail can be used as intermediate rail for tandem row



SURFACE MOUNT **ASD-FELP14-L**

ASD-FELP22-L ASD-FELP24-L sold separately:

1. Connect 3 pieces of the frame to the ceiling using four screws.
2. Connect the panel wires as shown in electrical schematic diagram and insert panel into frame.
3. Attach the fourth piece and secure with screws. Power on to ensure installation is complete.

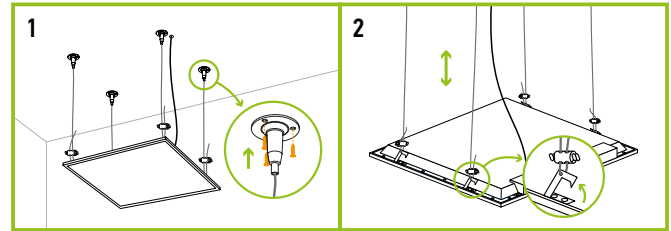


* Must remove earthquake hook before installing surface mount frame.

SUSPENDED MOUNT **ASD-CHS4 ASD-CHS6**

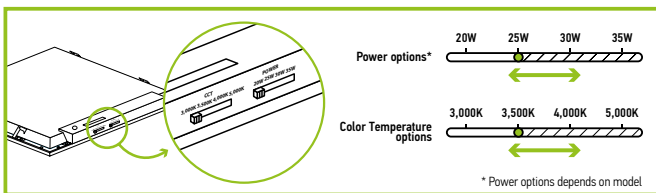
sold separately:

1. Insert the wall plugs (not included) into the ceiling and secure the suspension surface fixing to the ceiling.
2. Lock the suspension cable to the clip. Adjust the cable length to meet the height requirements. Attach the cable to the ceiling.

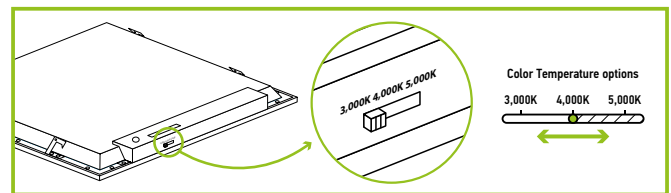


* For 1x4 and 2x4 installation please use 2 pcs of Ceiling Hanging set.

POWER AND COLOR TEMPERATURE SETTINGS:



COLOR TEMPERATURE SETTINGS:



For most up-to-date spec sheets please refer to asd-lighting.com

ASD LIGHTING CORP

E-mail: orders@asd-lighting.com | Web site: www.asd-lighting.com





LED BACK-LIT FLAT PANEL

ORDERING INFORMATION

Model	UPC	Pcs. per carton	Carton size	Carton weight	GTIN 14
ASD-BLP-22D2540-PRM	810050731447	2	24.6" x 24.8" x 3.1"	11 lbs	10810050731444
ASD-BLP-22D2550-PRM	810050731546	2	24.6" x 24.8" x 3.1"	11 lbs	10810050731543
ASD-BLP-24D3240-PRM	810050731553	2	48.6" x 24.8" x 3.1"	21.8 lbs	10810050731550
ASD-BLP-24D4040-PRM	810050731454	2	48.6" x 24.8" x 3.1"	21.8 lbs	10810050731451
ASD-BLP-24D4050-PRM	810050734455	2	48.6" x 24.8" x 3.1"	21.8 lbs	10810050734452
ASD-BLP-24D5040-PRM	810050731461	2	48.6" x 24.8" x 3.1"	21.8 lbs	10810050731468
ASD-BLP-14A35AC-PRM	-	2	48.6" x 13" x 3.1"	12.1 lbs	10810050731475
ASD-BLP-22D25AC-PRM	-	2	24.6" x 24.8" x 3.1"	11 lbs	10810050734681
ASD-BLP-24D40AC-PRM	-	2	51.2" x 27.6" x 3.4"	23.1 lbs	10810050733653
BLP-CC WITH COLOR CHANGING					
ASD-BLP-22D35-CC-PRM	-	2	24.6" x 24.8" x 3.1"	11 lbs	10810050732472
ASD-BLP-24D50-CC-PRM	-	2	51.2" x 27.6" x 3.2"	24.3 lbs	10810050732489
ASD-RC-24G-H	810050732499	100	13" x 10.6" x 6.7"	14.3 lbs	10810050732496
ASD-RC-24G-W	810050732529	100	18.5" x 10.2" x 10.2"	14.3 lbs	10810050732526
BLP-MS WITH MOTION SENSOR					
ASD-BLP-22A35AC-MS-PRM	-	2	24.6" x 24.8" x 6.3"	12.8 lbs	10810050731482
ASD-BLP-24A50AC-MS-PRM	-	2	48.6" x 24.8" x 6.3"	26.9 lbs	10810050731499
ASD-CELP02H-MS	819201023479	50	11.4" x 6.5" x 5.3"	6.6 lbs	10819201023476
BLP-EM WITH BATTERY BACK-UP					
ASD-BLP-22D25AC-EM-PRM	-	2	24.6" x 24.8" x 6.3"	17.6 lbs	10810050735107
ASD-BLP-24D40AC-EM-PRM	-	2	48.6" x 24.8" x 6.3"	30.6 lbs	10810050735114

ACCESSORIES:

Model	Description	UPC	Pcs. per carton	Carton size	Carton weight	GTIN 14
ASD-FDW-ELP14	Sheetrock mounting frame for 1x4 panels	857622006220	20	48.8" x 10.2" x 8.3"	31.5 lbs	10857622006237
ASD-FDW-ELP22	Sheetrock mounting frame for 2x2 panels	855029006393	20	26.8" x 10.4" x 7.9"	25.1 lbs	10855029006390
ASD-FDW-ELP24	Sheetrock mounting frame for 2x4 panels	857622006107	20	48.6" x 10.4" x 7.9"	48.9 lbs	10857622006104
ASD-FELP14-L	Surface mounting low frame for 1x4 panels	819201021574	9	48.8" x 5.9" x 7.7"	23.4 lbs	10819201021571
ASD-FELP22-L	Surface mounting low frame for 2x2 panels	819201021581	9	25.2" x 6.5" x 7.7"	28.8 lbs	10819201021588
ASD-FELP24-L	Surface mounting low frame for 2x4 panels	819201021598	9	48.8" x 5.9" x 7.7"	45.2 lbs	10819201021595
ASD-CHS4	39.37" Ceiling hanging set	859961005148	50	10.4" x 10.4" x 7.7"	23.7 lbs	10859961005145

For most up-to-date spec sheets please refer to asd-lighting.com

ASD LIGHTING CORP

E-mail: orders@asd-lighting.com | Web site: www.asd-lighting.com

