



LED DOWNLIGHT RETROFIT KIT

► **DESIGN & OPTIONS** - LED DOWNLIGHT RETROFIT KIT has a classic, lowprofile design with a baffle trim that allows you to have a stylish look with efficient lighting. Smooth dimming capabilities ranging from 10% to 100% with modern LED dimmers allow you to control the look and feel of your space. The 105° beam angle and CRI90+ grants you smooth and even lighting. It is also CCT selectable, letting you set it to 2,700K, 3,000K, 3,500K, 4,000K or 5,000K with a simple switch.

Models LRK-GBR with 355° of horizontal rotation and up to 25° of vertical rotation are perfect for sloped ceilings and directional lighting.

► **INSTALLATION** - Easy installation with universal TP24 or E26 connectors. It has everything you need in one set. Preinstalled spring clips are the best solution for quick and easy installation. This fixture is suitable for most new construction, remodeling, and shallow recessed lighting housings. Refer to install instructions for detailed steps.

► **APPLICATION** - Install the fixture to your ceiling for bright light in your family room, bedroom, hallway, corridor, or any other common area in your living space. It is suitable for Wet Locations, making it perfect for spaces with humidity requirements. It can also be used as a complimentary light to an existing ceiling light.

► **ENERGY SAVINGS & EFFICIENCY** - With a lifespan of 50,000 hours, these fixtures are made to last decades under normal operation! This fixture can cut your electric bill by up to 80% instantly and will save you a significant amount of money in its lifetime.

► **CERTIFICATION & WARRANTY** - Buy with confidence: ASD provides a 5-year limited warranty along with UL and ETL certification to guarantee top quality products and safety!

Energy Star classification allow participation in rebates; please check the rebate programs available in your state.

Catalog number	
Notes	
Type	



Model	Size	Watts	Voitage	Dimmable	Lumens	CCT	Finish	Dimensions	Type
LRKR ROUND									
ASD-LRKR-4D10AC-WH	4 inch	10W	120 V	TRIAC	686/701/704/709/695 lm	5CCT (2,700/3,000/3,500/4,000/5,000 K)	White	5-1/16" x 2-1/16"	Round
ASD-LRKR-4D10AC-WH-6PACK	4 inch	10W	120 V	TRIAC	686/701/704/709/695 lm	5CCT (2,700/3,000/3,500/4,000/5,000 K)	White	5-1/16" x 2-1/16"	Round
ASD-LDLRK-1BR-6D1230-WH-6PACK	5-6 inch	12W	120 V	TRIAC	1,000 lm	3,000 K	White	7-5/16" x 2-1/2"	Round
ASD-LRKR-6D15AC-WH	6 inch	15W	120 V	TRIAC	1,020/1,048/1,053/1,067/1,028 lm	5CCT (2,700/3,000/3,500/4,000/5,000 K)	White	7-5/16" x 2-3/16"	Round
ASD-LRKR-6D15AC-WH-6PACK	6 inch	15W	120 V	TRIAC	1,020/1,048/1,053/1,067/1,028 lm	5CCT (2,700/3,000/3,500/4,000/5,000 K)	White	7-5/16" x 2-3/16"	Round
LRKS SQUARE									
ASD-LRKS-4D10AC-WH	4 inch	10W	120 V	TRIAC	650/688/688/699/722 lm	5CCT (2,700/3,000/3,500/4,000/5,000 K)	White	5" x 5" x 2-1/16"	Square
ASD-LRKS-4D10AC-WH-6PACK	4 inch	10W	120 V	TRIAC	650/688/688/699/722 lm	5CCT (2,700/3,000/3,500/4,000/5,000 K)	White	5" x 5" x 2-1/16"	Square
ASD-LRKS-6D15AC-WH	6 inch	15W	120 V	TRIAC	1,000/1,024/1,061/1,072/1,085 lm	5CCT (2,700/3,000/3,500/4,000/5,000 K)	White	7-5/16" x 7-5/16" x 2-3/16"	Square
ASD-LRKS-6D15AC-WH-6PACK	6 inch	15W	120 V	TRIAC	1,000/1,024/1,061/1,072/1,085 lm	5CCT (2,700/3,000/3,500/4,000/5,000 K)	White	7-5/16" x 7-5/16" x 2-3/16"	Square
LRK-GBR GIMBAL									
ASD-LRK-GBR-4D10AC-WH	4 inch	10W	120 V	TRIAC	650/771/846/860/841 lm	5CCT (2,700/3,000/3,500/4,000/5,000 K)	White	5-3/8" x 2-13/16"	Round
ASD-LRK-GBR-4D10AC-WH-6PACK	4 inch	10W	120 V	TRIAC	650/771/846/860/841 lm	5CCT (2,700/3,000/3,500/4,000/5,000 K)	White	5-3/8" x 2-13/16"	Round
ASD-LRK-GBR-4D10AC-BK-6PACK	4 inch	10W	120 V	TRIAC	650/771/846/860/841 lm	5CCT (2,700/3,000/3,500/4,000/5,000 K)	Black	5-3/8" x 2-13/16"	Round
ASD-LRK-GBR-6D15AC-WH	6 inch	15W	120 V	TRIAC	1,100/1,243/1,310/1,308/1,221 lm	5CCT (2,700/3,000/3,500/4,000/5,000 K)	White	7-11/16" x 3-1/16"	Round
ASD-LRK-GBR-6D15AC-WH-6PACK	6 inch	15W	120 V	TRIAC	1,100/1,243/1,310/1,308/1,221 lm	5CCT (2,700/3,000/3,500/4,000/5,000 K)	White	7-11/16" x 3-1/16"	Round
ASD-LRK-GBR-6D15AC-BK-6PACK	6 inch	15W	120 V	TRIAC	1,100/1,243/1,310/1,308/1,221 lm	5CCT (2,700/3,000/3,500/4,000/5,000 K)	Black	7-11/16" x 3-1/16"	Round

For most up-to-date spec sheets please refer to asd-lighting.com



LED DOWNLIGHT RETROFIT KIT

PRODUCT SPECIFICATIONS:

Construction & Materials				
Housing	Aluminum			
Lens	PP, Acrylic			
Finish	White, Black			
Weight	ASD-LRKR-4D10AC-WH	0.2 lb (0.1 kg)	ASD-LRKS-6D15AC-WH	0.6 lb (0.3 kg)
	ASD-LRKR-4D10AC-WH-6PACK	1.8 lb (0.8 kg)	ASD-LRKS-6D15AC-WH-6PACK	4 lb (1.8 kg)
	ASD-LDLRK-1BR-6D1230-WH-6PACK	3.3 lb (1.5 kg)	ASD-LRK-GBR-4D10AC-WH	0.6 lb (0.3 kg)
	ASD-LRKR-6D15AC-WH	0.4 lb (0.2 kg)	ASD-LRK-GBR-4D10AC-WH-6PACK	3.6 lb (1.6 kg)
	ASD-LRKR-6D15AC-WH-6PACK	3.2 lb (1.5 kg)	ASD-LRK-GBR-4D10AC-BK-6PACK	
	ASD-LRKS-4D10AC-WH	0.4 lb (0.2 kg)	ASD-LRK-GBR-6D15AC-WH	0.8 lb (0.4 kg)
	ASD-LRKS-4D10AC-WH-6PACK	2.4 lb (1.1 kg)	ASD-LRK-GBR-6D15AC-WH-6PACK	5 lb (2.3 kg)
		ASD-LRK-GBR-6D15AC-BK-6PACK		
Environmental system				
Work environment	Suitable for Wet Locations, IP43	for ASD-LDLRK-1BR-6D1230-WH-6PACK model: IP40		
Operating temperature	-4°F to 104°F (-20°C to 40°C)	for ASD-LDLRK-1BR-6D1230-WH-6PACK model: -31°F to 104°F (-35°C to 40°C)		
L-70 Life	> 54,000 hrs	for ASD-LDLRK-1BR-6D1230-WH-6PACK and LRK-GBR models: > 50,000 hrs		
Optical system				
Luminous flux	ASD-LRKR-4D10AC-WH	686/701/704/709/695 lm	ASD-LRKS-6D15AC-WH	1,000/1,024/1,061/1,072/1,085 lm
	ASD-LRKR-4D10AC-WH-6PACK		ASD-LRKS-6D15AC-WH-6PACK	
	ASD-LDLRK-1BR-6D1230-WH-6PACK	1,000 lm	ASD-LRK-GBR-4D10AC-WH	650/771/846/860/841 lm
	ASD-LRKR-6D15AC-WH	1,020/1,048/1,053/1,067/1,028 lm	ASD-LRK-GBR-4D10AC-WH-6PACK	
	ASD-LRKR-6D15AC-WH-6PACK		ASD-LRK-GBR-4D10AC-BK-6PACK	
	ASD-LRKS-4D10AC-WH	650/688/688/699/722 lm	ASD-LRK-GBR-6D15AC-WH	1,100/1,243/1,310/1,308/1,221 lm
ASD-LRKS-4D10AC-WH-6PACK	ASD-LRK-GBR-6D15AC-WH-6PACK			
		ASD-LRK-GBR-6D15AC-BK-6PACK		
Color temperature	3,000 K; 5CCT (2,700/3,000/3,500/4,000/5,000 K)			
CRI	> 90			
Electrical system				
Input voltage	120 V			
Max input current	ASD-LRKR-4D10AC-WH	0.1 A	ASD-LRKS-6D15AC-WH	0.125 A
	ASD-LRKR-4D10AC-WH-6PACK		ASD-LRKS-6D15AC-WH-6PACK	
	ASD-LDLRK-1BR-6D1230-WH-6PACK	0.12 A	ASD-LRK-GBR-4D10AC-WH	0.12 A
	ASD-LRKR-6D15AC-WH	0.125 A	ASD-LRK-GBR-4D10AC-WH-6PACK	
	ASD-LRKR-6D15AC-WH-6PACK		ASD-LRK-GBR-4D10AC-BK-6PACK	
	ASD-LRKS-4D10AC-WH	0.1 A	ASD-LRK-GBR-6D15AC-WH	0.15 A
ASD-LRKS-4D10AC-WH-6PACK	ASD-LRK-GBR-6D15AC-WH-6PACK			
		ASD-LRK-GBR-6D15AC-BK-6PACK		
Inrush current (Action time)	ASD-LRKR-4D10AC-WH	0.04 A (0.2 S)	ASD-LRKS-6D15AC-WH	0.04 A (0.2 S)
	ASD-LRKR-4D10AC-WH-6PACK		ASD-LRKS-6D15AC-WH-6PACK	
	ASD-LDLRK-1BR-6D1230-WH-6PACK	0.2 A (0.01 S)	ASD-LRK-GBR-4D10AC-WH	30 A (0.3 S)
	ASD-LRKR-6D15AC-WH	0.04 A (0.2 S)	ASD-LRK-GBR-4D10AC-WH-6PACK	
	ASD-LRKR-6D15AC-WH-6PACK		ASD-LRK-GBR-4D10AC-BK-6PACK	
	ASD-LRKS-4D10AC-WH	0.04 A (0.2 S)	ASD-LRK-GBR-6D15AC-WH	40 A (0.3 S)
ASD-LRKS-4D10AC-WH-6PACK	ASD-LRK-GBR-6D15AC-WH-6PACK			
		ASD-LRK-GBR-6D15AC-BK-6PACK		
Off state power	0W			
Power consumption	ASD-LRKR-4D10AC-WH	10W	ASD-LRKS-6D15AC-WH	15W
	ASD-LRKR-4D10AC-WH-6PACK		ASD-LRKS-6D15AC-WH-6PACK	
	ASD-LDLRK-1BR-6D1230-WH-6PACK	12W	ASD-LRK-GBR-4D10AC-WH	10W
	ASD-LRKR-6D15AC-WH	15W	ASD-LRK-GBR-4D10AC-WH-6PACK	
	ASD-LRKR-6D15AC-WH-6PACK		ASD-LRK-GBR-4D10AC-BK-6PACK	
	ASD-LRKS-4D10AC-WH	10W	ASD-LRK-GBR-6D15AC-WH	15W
ASD-LRKS-4D10AC-WH-6PACK	ASD-LRK-GBR-6D15AC-WH-6PACK			
		ASD-LRK-GBR-6D15AC-BK-6PACK		
Power factor	> 0.9			
Output voltage	ASD-LRKR-4D10AC-WH	135 V	ASD-LRKS-6D15AC-WH	120 V
	ASD-LRKR-4D10AC-WH-6PACK		ASD-LRKS-6D15AC-WH-6PACK	
	ASD-LDLRK-1BR-6D1230-WH-6PACK	132 V	ASD-LRK-GBR-4D10AC-WH	60 V
	ASD-LRKR-6D15AC-WH	120 V	ASD-LRK-GBR-4D10AC-WH-6PACK	
	ASD-LRKR-6D15AC-WH-6PACK		ASD-LRK-GBR-4D10AC-BK-6PACK	
	ASD-LRKS-4D10AC-WH	135 V	ASD-LRK-GBR-6D15AC-WH	90 V
ASD-LRKS-4D10AC-WH-6PACK	ASD-LRK-GBR-6D15AC-WH-6PACK			
		ASD-LRK-GBR-6D15AC-BK-6PACK		

For most up-to-date spec sheets please refer to asd-lighting.com



LED DOWNLIGHT RETROFIT KIT

Electrical system						
Max output current	ASD-LRKR-4D10AC-WH		0.065 A	ASD-LRKS-6D15AC-WH		0.115 A
	ASD-LRKR-4D10AC-WH-6PACK			ASD-LRKS-6D15AC-WH-6PACK		
	ASD-LDLRK-1BR-6D1230-WH-6PACK		0.095 A	ASD-LRK-GBR-4D10AC-WH		0.15 A
	ASD-LRKR-6D15AC-WH		0.115 A	ASD-LRK-GBR-4D10AC-WH-6PACK		
	ASD-LRKR-6D15AC-WH-6PACK			ASD-LRK-GBR-4D10AC-BK-6PACK		
	ASD-LRKS-4D10AC-WH		0.065 A	ASD-LRK-GBR-6D15AC-WH		
ASD-LRKS-4D10AC-WH-6PACK		ASD-LRK-GBR-6D15AC-WH-6PACK				
Surge protection DM/CM		25 kV / 2.5 kV				
Dimming compatible controls						
Brand	Lutron			Leviton		Dimming range
Models	DVWCL-153PH-LA	DVCL-153P-WH	DV-600P	DSL06-1TW	6683	10-100%
	DVW-603PGH-WH	SCL-153PR-WH	NT-1000	DB33K1	6674	Regular and voluntary certifications
	CTCL-153PDH-WH	CTCL-150H-WH	S-603P	1A2305	6672	
	MACL-153MR-WH	CT-600PR-WH	S-600P	6633-P	6631	5-year limited warranty
	CTCL-153PDH-LA	CT-103PR-WH	4X603	IPL06		UL certified E475148
	CTCL-153PR-WH	SLV-600P-WH				cETLus certified 4008281 (for ASD-LDLRK-1BR-6D1230-WH-6PACK model)
MACL-153M-WH	DVLV-603P-IV				Energy Star listed	

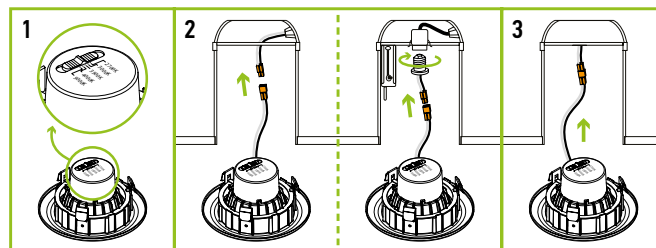
PACKAGE CONTENTS:

Description	Q-ty
LED Downlight Retrofit Kit	1 (6 for 6 pack)
Adapter (A)	1
Box	1



INSTALLATION STEPS 4" AND SQUARE FIXTURE:

1. Choose needed color temperature by adjusting the switch.
2. Turn off the main power and remove the existing trim and bulb from the can. Use one of the options to connect the terminals.
3. Carefully route wires into the can and gently push the fixture up into the can until sealed.



INSTALLATION GUIDE

IMPORTANT SAFETY INFORMATION:

Please read all the instructions below before installation.

- ▶ Make sure that the supply voltage corresponds to the rated product voltage.
- ▶ The product must be installed by a qualified electrician in accordance with the National Electrical Code and corresponding local codes.
- ▶ If the product is damaged, do not use it.

⚠ WARNING

RISK OF PERSONAL INJURY – READ and follow all WARNINGS and installation instructions. Keep or give to the owner for future reference.

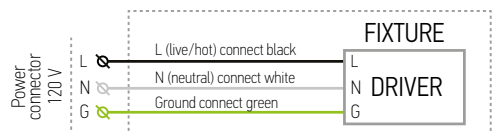
Risk of cuts: Wear gloves to prevent cuts or abrasions when removing from carton, handling, installing, and maintaining this product.

Risk of electric shock: This product must be installed in accordance with the applicable installation code by a person familiar with the construction and operation of the product and the hazards involved.

Risk of Fire: Minimum 194°F supply conductors. Consult a qualified electrician to ensure correct branch circuit conductor.

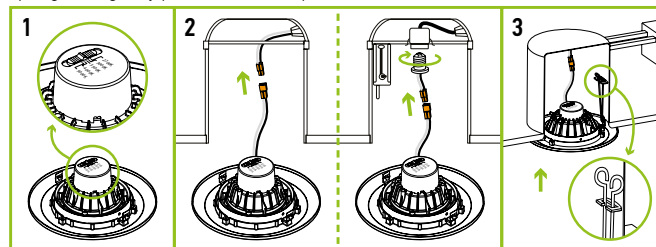
ASD® assumes no responsibility for claims arising out of improper or careless installation or handling of this product.

ELECTRICAL SCHEMATIC DIAGRAM:



INSTALLATION STEPS 6":

1. Choose needed color temperature by adjusting the switch.
2. Turn off the main power and remove the existing trim and bulb from the Can. Use one of the options to connect the terminals.
3. Squeeze the two sets of spring clip arms up toward each other. Route wires into the Can and hook both springs into the arm hook on the inside of Can. Release springs and gently push the fixture up into the Can until sealed.



For most up-to-date spec sheets please refer to asd-lighting.com

ASD LIGHTING CORP

E-mail: orders@asd-lighting.com | Web site: www.asd-lighting.com





LED DOWNLIGHT RETROFIT KIT

ORDERING INFORMATION

Model	UPC	Pcs. per carton	Carton size	Carton weight	GTIN 14
LRKR ROUND					
ASD-LRKR-4D10AC-WH	810050736695	12	14.5" x 11.2" x 5.9"	4.2 lb	10810050736692
ASD-LRKR-4D10AC-WH-6PACK	810050738279	2	15.8" x 11.2" x 7.5"	4.9 lb	10810050738276
ASD-LDLRK-1BR-6D1230-WH-6PACK	810050738484	2	20.9" x 14.8" x 9.8"	8.2 lb	10810050738481
ASD-LRKR-6D15AC-WH	810050736701	12	15.9" x 15.8" x 8.3"	7.3 lb	10810050736708
ASD-LRKR-6D15AC-WH-6PACK	810050738286	2	16.9" x 14.6" x 9.1"	7.9 lb	10810050738283
LRKS SQUARE					
ASD-LRKS-4D10AC-WH	810050736718	12	15" x 11" x 5.9"	6.2 lb	10810050736715
ASD-LRKS-4D10AC-WH-6PACK	810050737968	2	15.8" x 13" x 6.9"	6.4 lb	10810050737965
ASD-LRKS-6D15AC-WH	810050736725	12	15.9" x 15.8" x 8.3"	9.9 lb	10810050736722
ASD-LRKS-6D15AC-WH-6PACK	810050738293	2	17.3" x 16.3" x 9.1"	9.7 lb	10810050738290
LRK-GBR GIMBAL					
ASD-LRK-GBR-4D10AC-WH	810050736138	12	18.7" x 11.8" x 6.2"	9.7 lb	30810050736139
ASD-LRK-GBR-4D10AC-WH-6PACK	810050738309	2	11.2" x 10.6" x 12.6"	9.4 lb	10810050738306
ASD-LRK-GBR-4D10AC-BK-6PACK	819201023295	2	11.2" x 10.6" x 12.6"	9.4 lb	10819201023292
ASD-LRK-GBR-6D15AC-WH	810050736145	12	20.5" x 16.5" x 8.5"	14.3 lb	30810050736146
ASD-LRK-GBR-6D15AC-WH-6PACK	810050738316	2	22.1" x 14.6" x 9.3"	12.8 lb	10810050738313
ASD-LRK-GBR-6D15AC-BK-6PACK	819201022823	2	22.1" x 14.6" x 9.3"	12.8 lb	10819201022820

For most up-to-date spec sheets please refer to asd-lighting.com

ASD LIGHTING CORP

E-mail: orders@asd-lighting.com | Web site: www.asd-lighting.com

