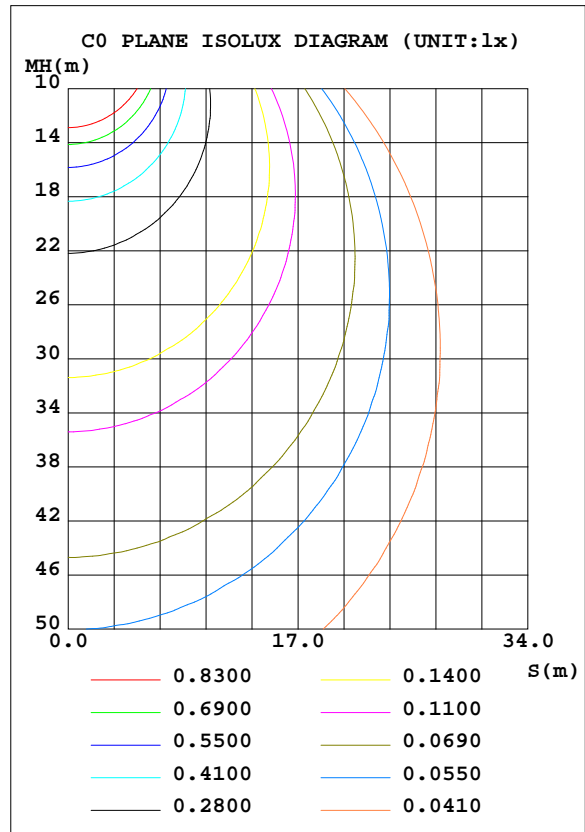
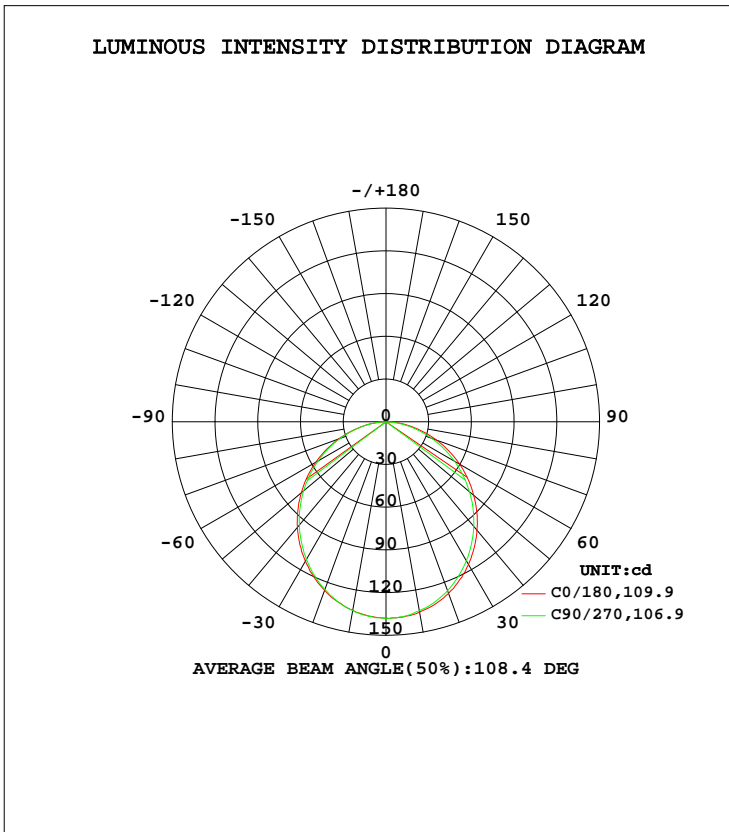


**LUMINAIRE PHOTOMETRIC TEST REPORT**

Test:U:120.03V I:0.0460A P:5.1900W PF:0.9400 Freq:60.00Hz Lamp Flux:378.276x1 lm		
NAME: ASD-UCS-12D5CC	TYPE: N/A	WEIGHT: N/A
SPEC.: N/A	DIM.: N/A	SERIAL No.: N/A
MFR.: ASD Lighting Corp	SUR.: N/A	Shielding Angle: N/A

DATA OF LAMP		PHOTOMETRIC DATA				Eff: 72.89 lm/W
MODEL	ASD-UCS-12D5CC	I <sub>max</sub> (cd)	138.2	S/MH(C0/180)		1.25
NOMINAL POWER(W)	5	LOR(%)	100.0	S/MH(C90/270)		1.22
RATED VOLTAGE(V)	120	TOTAL FLUX(lm)	378.28	η UP, DN(C0-180)		0.1,49.6
NOMINAL FLUX(lm)	378.276	CIE CLASS	DIRECT	η UP, DN(C180-360)		0.0,50.3
LAMPS INSIDE	1	η up(%)	0.1	CIBSE SHR NOM		1.25
TEST VOLTAGE(V)	120	η down(%)	99.9	CIBSE SHR MAX		1.35



C Range: 0 - 360DEG  
 C Interval: 22.5DEG  
 Test Speed: HIGH  
 Temperature:24.8DEG  
 Operators:Water  
 Test Date:2023-09-06

γ Range: 0 - 180DEG  
 γ Interval: 1.0DEG  
 Test System:EVERFINE GO-R5000\_V2 SYSTEM V2.00.446  
 Humidity:34%  
 Test Distance:2.513m [K=1.0000]  
 Remarks: Model No: UCL-31B-12G

ZONAL FLUX DIAGRAM

ZONAL FLUX DIAGRAM:

γ	C0	C45	C90	C135	C180	C225	C270	C315	γ	Φ zone	Φ total	%lum, lamp
10	134.4	134.4	134.6	134.9	135.8	135.2	134.7	134.9	0- 10	13.02	13.02	3.44,3.44
20	125.9	125.5	125.5	126.4	128.3	126.9	126.3	126.3	10- 20	37.05	50.07	13.2,13.2
30	113.2	112.3	111.7	113.3	115.9	114.4	112.8	113.1	20- 30	55.48	105.6	27.9,27.9
40	96.69	95.42	94.74	96.92	99.41	98.05	95.87	96.30	30- 40	65.92	171.5	45.3,45.3
50	77.73	76.26	75.55	77.86	80.52	78.77	76.60	77.06	40- 50	67.38	238.9	63.1,63.1
60	57.07	55.85	55.10	57.11	59.84	57.68	55.69	56.50	50- 60	60.17	299.0	79.79
70	35.28	34.69	34.15	35.70	37.86	36.08	34.15	35.21	60- 70	45.63	344.7	91.1,91.1
80	14.76	14.52	14.41	15.27	16.67	15.30	13.90	14.72	70- 80	26.32	371.0	98.1,98.1
90	0.0154	0.0154	0.0137	0.0207	0.0636	0.0089	0.0010	0.0012	80- 90	6.914	377.9	99.9,99.9
100	0.0268	0.0390	0.0270	0.0456	0.0119	0.0058	0.0058	0.0062	90-100	0.0147	377.9	99.9,99.9
110	0.0353	0.0392	0.0365	0.0450	0.0208	0.0162	0.0158	0.0147	100-110	0.0261	377.9	99.9,99.9
120	0.0472	0.0519	0.0527	0.0566	0.0268	0.0268	0.0278	0.0260	110-120	0.0331	378.0	99.9,99.9
130	0.0739	0.0777	0.0828	0.0809	0.0416	0.0421	0.0428	0.0404	120-130	0.0441	378.0	99.9,99.9
140	0.1226	0.1341	0.1390	0.1321	0.0580	0.0592	0.0598	0.0595	130-140	0.0582	378.1	99.9,99.9
150	0.1779	0.1984	0.2071	0.1918	0.0738	0.0779	0.0828	0.0780	140-150	0.0732	378.1	100,100
160	0.2283	0.2361	0.2424	0.2383	0.1056	0.1051	0.1061	0.1035	150-160	0.0714	378.2	100,100
170	0.2153	0.2201	0.2235	0.2215	0.1315	0.1250	0.1266	0.1250	160-170	0.0494	378.3	100,100
180	0.1772	0.1666	0.1640	0.1766	0.1764	0.1746	0.1642	0.1690	170-180	0.0166	378.3	100,100
DEG	LUMINOUS INTENSITY:cd									UNIT:lm		

Conical surface Flux(90deg): 205.54 lm

%lum = 54.3%  
 %lamp = 54.3%

Conical surface Flux(120deg): 299.02 lm

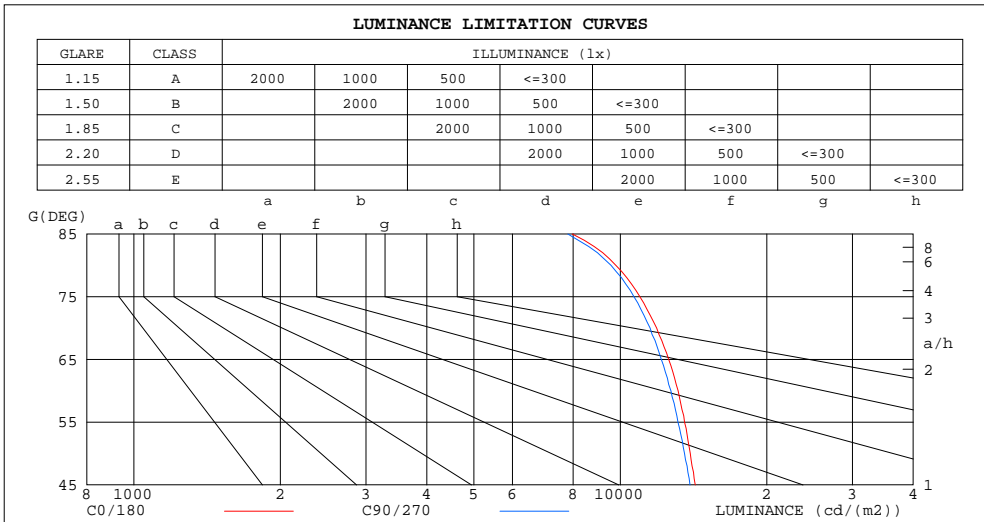
%lum = 79.0%  
 %lamp = 79.0%

C Range: 0 - 360DEG  
 C Interval: 22.5DEG  
 Test Speed: HIGH  
 Temperature:24.8DEG  
 Operators:Water  
 Test Date:2023-09-06

γ Range: 0 - 180DEG  
 γ Interval: 1.0DEG  
 Test System:EVERFINE GO-R5000\_V2 SYSTEM V2.00.446  
 Humidity:34%  
 Test Distance:2.513m [K=1.0000]  
 Remarks: Model No: UCL-31B-12G

**LUMINANCE LIMITATION CURVES**

Test:U:120.03V I:0.0460A P:5.1900W PF:0.9400 Freq:60.00Hz Lamp Flux:378.276x1 lm		
NAME: ASD-UCS-12D5CC	TYPE: N/A	WEIGHT: N/A
SPEC.: N/A	DIM.: N/A	SERIAL No.: N/A
MFR.: ASD Lighting Corp	SUR.: N/A	Shielding Angle: N/A



LUMINANCE cd/(m2)		
G (DEG)	C0/180	C90/270
85	7967	7803
80	9789	9568
75	10970	10664
70	11878	11512
65	12571	12142
60	13144	12704
55	13552	13140
50	13927	13549
45	14254	13909

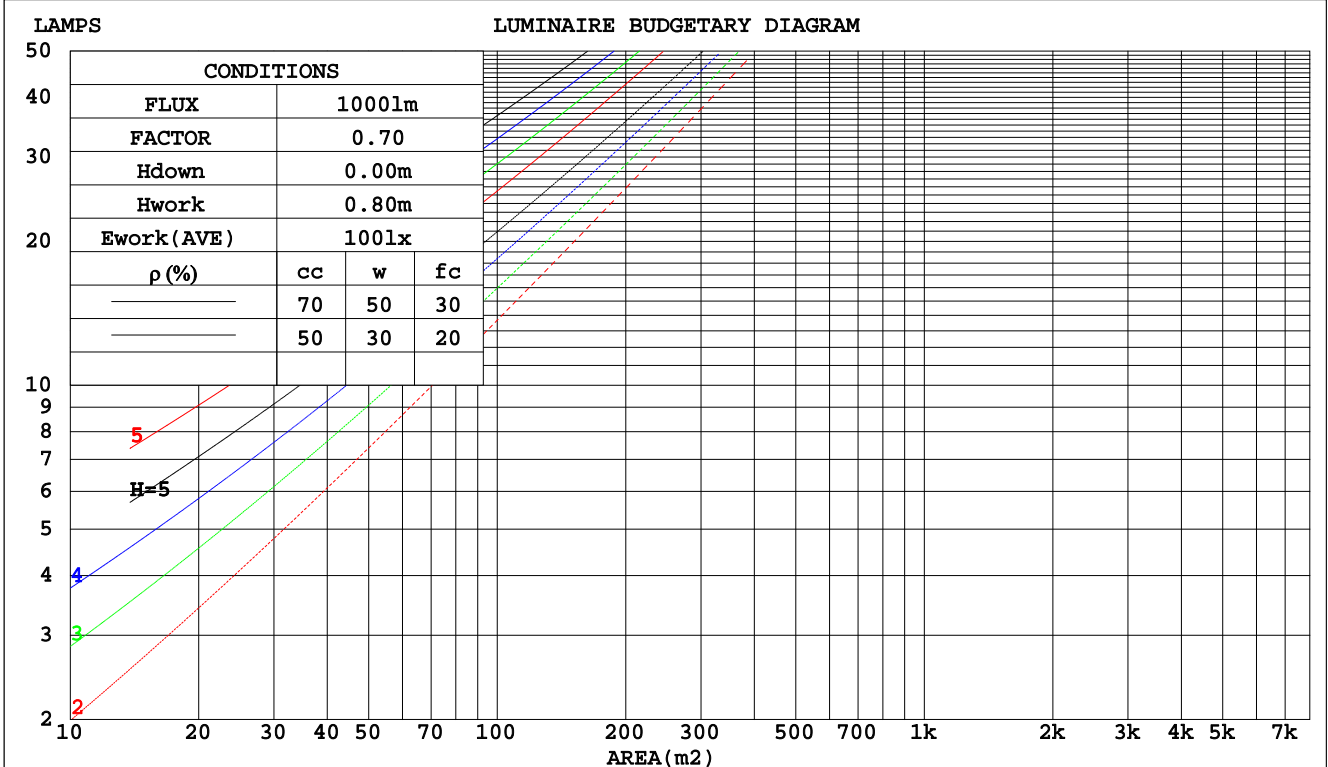
C Range: 0 - 360DEG  
 C Interval: 22.5DEG  
 Test Speed: HIGH  
 Temperature: 24.8DEG  
 Operators: Water  
 Test Date: 2023-09-06

γ Range: 0 - 180DEG  
 γ Interval: 1.0DEG  
 Test System: EVERFINE GO-R5000\_V2 SYSTEM V2.00.446  
 Humidity: 34%  
 Test Distance: 2.513m [K=1.0000]  
 Remarks: Model No: UCL-31B-12G

CU AND LUMINAIRE BUDGETARY ESTIMATE DIAGRAM

Test:U:120.03V I:0.0460A P:5.1900W PF:0.9400 Freq:60.00Hz Lamp Flux:378.276x1 lm		
NAME: ASD-UCS-12D5CC	TYPE: N/A	WEIGHT: N/A
SPEC.: N/A	DIM.: N/A	SERIAL No.: N/A
MFR.: ASD Lighting Corp	SUR.: N/A	Shielding Angle: N/A

pcc	80%			70%			50%			30%			10%			0
	50%	30%	10%	50%	30%	10%	50%	30%	10%	50%	30%	10%	50%	30%	10%	0
pw																0
pfc	20%			20%			20%			20%			20%			0
RCR	RCR:Room Cavity Ratio															
	Coefficients of Utilization(CU)															
0.0	1.19	1.19	1.19	1.16	1.16	1.16	1.11	1.11	1.11	1.06	1.06	1.06	1.02	1.02	1.02	.00
1.0	1.04	.00	.96	1.02	.98	.94	.97	.94	.91	.93	.91	.88	.90	.88	.86	.84
2.0	.91	.84	.78	.89	.82	.77	.85	.80	.75	.82	.77	.74	.79	.75	.72	.70
3.0	.80	.71	.65	.78	.70	.64	.75	.69	.63	.72	.67	.62	.70	.65	.61	.59
4.0	.71	.62	.55	.69	.61	.55	.67	.60	.54	.64	.58	.53	.62	.57	.52	.50
5.0	.63	.54	.47	.62	.53	.47	.60	.52	.47	.58	.51	.46	.56	.50	.46	.43
6.0	.57	.48	.41	.56	.47	.41	.54	.46	.41	.52	.46	.40	.51	.45	.40	.38
7.0	.52	.43	.37	.51	.42	.36	.49	.42	.36	.48	.41	.36	.46	.40	.36	.34
8.0	.47	.39	.33	.46	.38	.33	.45	.38	.32	.44	.37	.32	.43	.36	.32	.30
9.0	.43	.35	.29	.43	.35	.29	.41	.34	.29	.40	.34	.29	.39	.33	.29	.27
10.0	.40	.32	.27	.39	.32	.27	.38	.31	.27	.37	.31	.26	.36	.31	.26	.24



C Range: 0 - 360DEG  
 C Interval: 22.5DEG  
 Test Speed: HIGH  
 Temperature:24.8DEG  
 Operators:Water  
 Test Date:2023-09-06

γ Range: 0 - 180DEG  
 γ Interval: 1.0DEG  
 Test System:EVERFINE GO-R5000\_V2 SYSTEM V2.00.446  
 Humidity:34%  
 Test Distance:2.513m [K=1.0000]  
 Remarks: Model No: UCL-31B-12G

WEC AND CCEC

Test:U:120.03V I:0.0460A P:5.1900W PF:0.9400 Freq:60.00Hz		
Lamp Flux:378.276x1 lm		
NAME: ASD-UCS-12D5CC	TYPE: N/A	WEIGHT: N/A
SPEC.: N/A	DIM.: N/A	SERIAL No.: N/A
MFR.: ASD Lighting Corp	SUR.: N/A	Shielding Angle: N/A

ρcc	80%			70%			50%			30%			10%			0
ρw	50%	30%	10%	50%	30%	10%	50%	30%	10%	50%	30%	10%	50%	30%	10%	0
ρfc	20%			20%			20%			20%			20%			0
RCR	RCR:Room Cavity Ratio						Wall Exitance Coefficients(WEC)									
0.0																
1.0	.308	.175	.055	.300	.171	.054	.287	.165	.053	.275	.159	.051	.264	.153	.049	
2.0	.290	.159	.049	.283	.156	.048	.272	.151	.047	.261	.146	.046	.251	.142	.045	
3.0	.268	.143	.043	.263	.141	.042	.252	.137	.042	.243	.133	.041	.234	.129	.040	
4.0	.248	.129	.038	.243	.127	.038	.234	.124	.037	.225	.121	.036	.217	.118	.036	
5.0	.229	.117	.034	.225	.115	.034	.217	.113	.033	.209	.110	.033	.202	.108	.032	
6.0	.212	.107	.030	.209	.105	.030	.201	.103	.030	.195	.101	.030	.188	.099	.029	
7.0	.198	.098	.028	.194	.097	.028	.188	.095	.027	.182	.093	.027	.176	.091	.027	
8.0	.185	.090	.025	.182	.089	.025	.176	.088	.025	.170	.086	.025	.165	.085	.025	
9.0	.173	.084	.023	.170	.083	.023	.165	.082	.023	.160	.080	.023	.156	.079	.023	
10.0	.163	.078	.022	.160	.077	.022	.156	.076	.021	.151	.075	.021	.147	.074	.021	

ρcc	80%			70%			50%			30%			10%			0
ρw	50%	30%	10%	50%	30%	10%	50%	30%	10%	50%	30%	10%	50%	30%	10%	0
ρfc	20%			20%			20%			20%			20%			0
RCR	RCR:Room Cavity Ratio						Ceiling Cavity Exitance Coefficients(CCEC)									
0.0	.191	.191	.191	.163	.163	.163	.112	.112	.112	.064	.064	.064	.020	.020	.020	
1.0	.181	.157	.135	.155	.135	.116	.106	.093	.081	.061	.054	.047	.020	.017	.015	
2.0	.173	.133	.099	.148	.114	.086	.101	.079	.060	.058	.046	.035	.019	.015	.011	
3.0	.165	.115	.075	.141	.099	.065	.097	.069	.046	.056	.040	.027	.018	.013	.009	
4.0	.157	.102	.059	.135	.088	.052	.093	.061	.036	.054	.036	.021	.017	.012	.007	
5.0	.150	.091	.048	.129	.079	.042	.089	.055	.030	.051	.032	.018	.017	.011	.006	
6.0	.143	.083	.040	.123	.072	.035	.085	.050	.025	.049	.030	.015	.016	.010	.005	
7.0	.136	.076	.034	.117	.066	.030	.081	.046	.021	.047	.027	.013	.015	.009	.004	
8.0	.129	.070	.030	.111	.061	.026	.077	.043	.018	.045	.025	.011	.015	.008	.004	
9.0	.123	.065	.026	.106	.057	.023	.074	.040	.016	.043	.024	.010	.014	.008	.003	
10.0	.118	.061	.023	.101	.053	.020	.070	.037	.014	.041	.022	.009	.013	.007	.003	

C Range: 0 - 360DEG  
 C Interval: 22.5DEG  
 Test Speed: HIGH  
 Temperature:24.8DEG  
 Operators:Water  
 Test Date:2023-09-06

γ Range: 0 - 180DEG  
 γ Interval: 1.0DEG  
 Test System:EVERFINE GO-R5000\_V2 SYSTEM V2.00.446  
 Humidity:34%  
 Test Distance:2.513m [K=1.0000]  
 Remarks: Model No: UCL-31B-12G

UGR(Unified Glare Rating) Table

Test:U:120.03V I:0.0460A P:5.1900W PF:0.9400 Freq:60.00Hz		
Lamp Flux:378.276x1 lm		
NAME: ASD-UCS-12D5CC	TYPE: N/A	WEIGHT: N/A
SPEC.: N/A	DIM.: N/A	SERIAL No.: N/A
MFR.: ASD Lighting Corp	SUR.: N/A	Shielding Angle: N/A

ceiling/cavity	0.7	0.7	0.5	0.5	0.3	0.7	0.7	0.5	0.5	0.3
walls	0.5	0.3	0.5	0.3	0.3	0.5	0.3	0.5	0.3	0.3
working plane	0.2	0.2	0.2	0.2	0.2	0.2	0.2	0.2	0.2	0.2
Room dimensions	Viewed crosswise					Viewed endwise				
x = 2H y = 2H	25.2	26.7	25.5	26.9	27.1	25.1	26.6	25.3	26.8	27.0
3H	26.7	28.1	27.0	28.4	28.6	26.5	27.9	26.8	28.2	28.4
4H	27.3	28.6	27.6	28.9	29.2	27.1	28.5	27.5	28.7	29.0
6H	27.7	29.0	28.1	29.3	29.5	27.6	28.8	27.9	29.1	29.4
8H	27.9	29.1	28.2	29.4	29.6	27.7	28.9	28.0	29.2	29.5
12H	27.9	29.1	28.3	29.4	29.7	27.8	28.9	28.1	29.2	29.5
4H 2H	25.8	27.1	26.1	27.4	27.6	25.7	27.0	26.0	27.3	27.5
3H	27.5	28.7	27.8	28.9	29.3	27.3	28.5	27.7	28.8	29.1
4H	28.2	29.3	28.6	29.6	29.9	28.1	29.1	28.4	29.5	29.8
6H	28.7	29.7	29.2	30.0	30.4	28.6	29.6	29.0	29.9	30.3
8H	28.9	29.8	29.3	30.2	30.6	28.8	29.7	29.2	30.1	30.4
12H	29.0	29.9	29.5	30.2	30.6	28.9	29.7	29.3	30.1	30.5
8H 4H	28.5	29.3	28.9	29.7	30.1	28.3	29.2	28.8	29.6	30.0
6H	29.1	29.9	29.6	30.3	30.7	29.0	29.8	29.5	30.2	30.6
8H	29.4	30.1	29.9	30.5	30.9	29.3	29.9	29.8	30.4	30.8
12H	29.6	30.1	30.1	30.6	31.1	29.5	30.0	30.0	30.5	31.0
12H 4H	28.5	29.3	28.9	29.7	30.1	28.3	29.2	28.8	29.5	30.0
6H	29.2	29.9	29.7	30.3	30.7	29.1	29.7	29.6	30.2	30.6
8H	29.5	30.1	30.0	30.5	31.0	29.4	30.0	29.9	30.4	30.9
Variations with the observer position at spacings(CIE Pub.117):										
S = 1.0H	+ 0.2 / - 0.2					+ 0.2 / - 0.2				
1.5H	+ 0.2 / - 0.3					+ 0.2 / - 0.3				
2.0H	+ 0.2 / - 0.2					+ 0.2 / - 0.3				

CIE Pub.117, 378.3 lm Total Lamp Luminous Flux Correct (8log(F/F0) = -3.4)  
 Area: 0.00868 m2

C Range: 0 - 360DEG  
 C Interval: 22.5DEG  
 Test Speed: HIGH  
 Temperature:24.8DEG  
 Operators:Water  
 Test Date:2023-09-06

γ Range: 0 - 180DEG  
 γ Interval: 1.0DEG  
 Test System:EVERFINE GO-R5000\_V2 SYSTEM V2.00.446  
 Humidity:34%  
 Test Distance:2.513m [K=1.0000]  
 Remarks: Model No: UCL-31B-12G

**UTILIZATION FACTORS TABLE**

Test:U:120.03V I:0.0460A P:5.1900W PF:0.9400 Freq:60.00Hz Lamp Flux:378.276x1 lm		
NAME: ASD-UCS-12D5CC	TYPE: N/A	WEIGHT: N/A
SPEC.: N/A	DIM.: N/A	SERIAL No.: N/A
MFR.: ASD Lighting Corp	SUR.: N/A	Shielding Angle: N/A

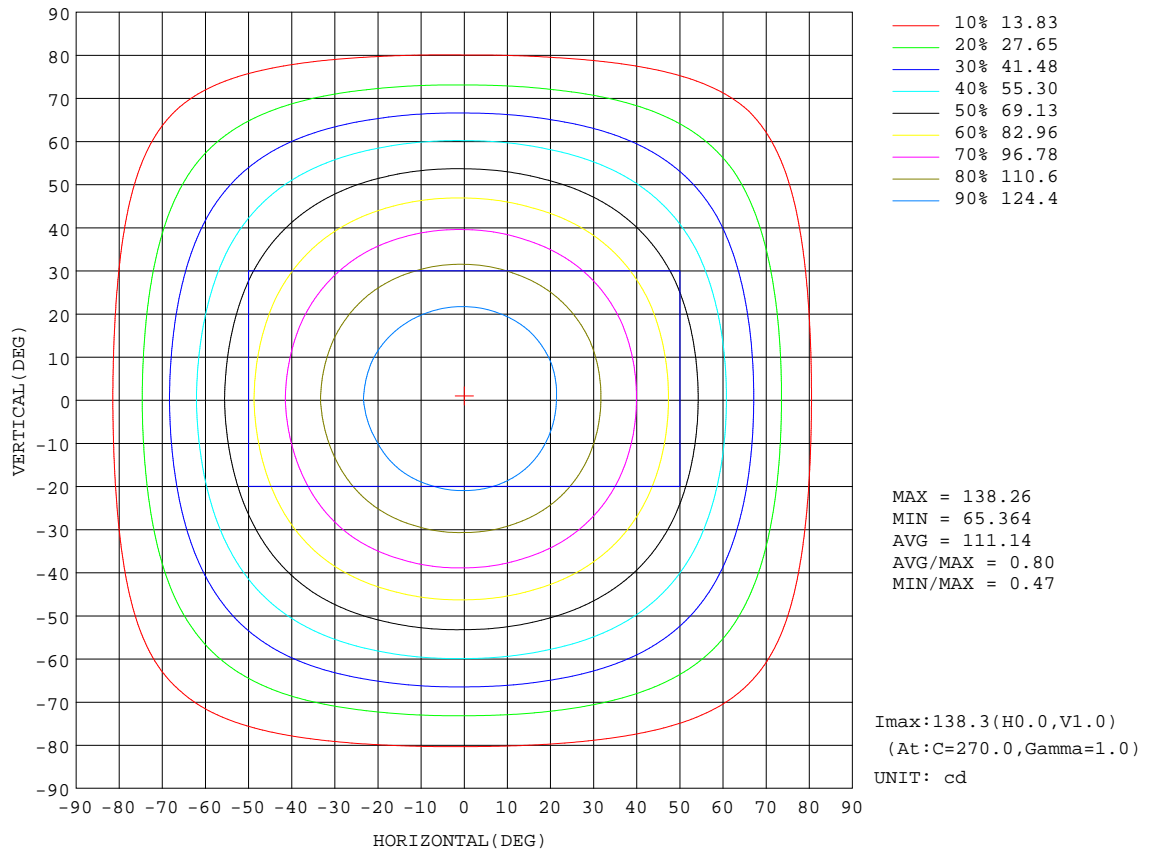
REFLECTANCE										
Ceiling	0.8	0.8	0.8	0.7	0.7	0.7	0.5	0.5	0.5	0
Walls	0.7	0.5	0.3	0.7	0.5	0.3	0.7	0.5	0.3	0
Working plane	0.2	0.2	0.2	0.2	0.2	0.2	0.2	0.2	0.2	0
ROOM INDEX	UTILIZATION FACTORS(PERCENT) $k(RI) \times RCR = 5$									
k = 0.60	58	46	39	57	46	39	56	46	39	33
0.80	68	56	49	67	56	49	65	55	49	42
1.00	76	65	58	75	65	58	73	66	57	50
1.25	83	73	66	82	72	65	79	71	65	57
1.50	88	79	72	87	78	71	84	76	70	62
2.00	95	87	80	93	85	79	90	83	78	70
2.50	99	91	85	97	90	84	93	87	83	74
3.00	102	96	90	100	94	89	96	91	87	78
4.00	106	101	96	104	99	95	100	96	92	83
5.00	109	104	100	106	102	98	102	98	95	86
ROOM INDEX	UF(total)									Direct
According to DIN EN 13032-2 2004			Suspended				SHRNOM = 1.25			

C Range: 0 - 360DEG  
 C Interval: 22.5DEG  
 Test Speed: HIGH  
 Temperature:24.8DEG  
 Operators:Water  
 Test Date:2023-09-06

$\gamma$  Range: 0 - 180DEG  
 $\gamma$  Interval: 1.0DEG  
 Test System:EVERFINE GO-R5000\_V2 SYSTEM V2.00.446  
 Humidity:34%  
 Test Distance:2.513m [K=1.0000]  
 Remarks: Model No: UCL-31B-12G

**ISOCANDELA DIAGRAM**

Test:U:120.03V I:0.0460A P:5.1900W PF:0.9400 Freq:60.00Hz Lamp Flux:378.276x1 lm		
NAME: ASD-UCS-12D5CC	TYPE: N/A	WEIGHT: N/A
SPEC.: N/A	DIM.: N/A	SERIAL No.: N/A
MFR.: ASD Lighting Corp	SUR.: N/A	Shielding Angle: N/A



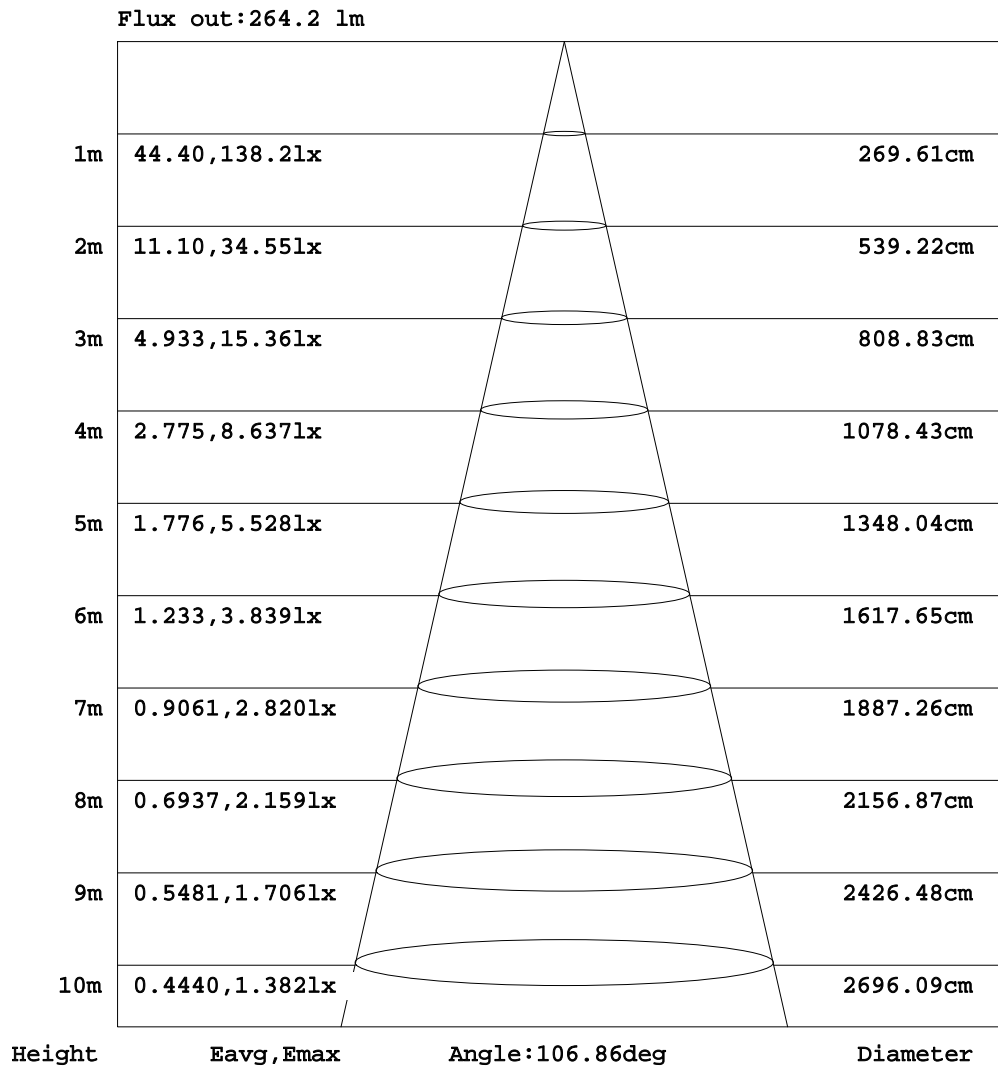
C Range: 0 - 360DEG  
 C Interval: 22.5DEG  
 Test Speed: HIGH  
 Temperature: 24.8DEG  
 Operators: Water  
 Test Date: 2023-09-06

γ Range: 0 - 180DEG  
 γ Interval: 1.0DEG  
 Test System: EVERFINE GO-R5000\_V2 SYSTEM V2.00.446  
 Humidity: 34%  
 Test Distance: 2.513m [K=1.0000]  
 Remarks: Model No: UCL-31B-12G



**AAI Figure**

Test:U:120.03V I:0.0460A P:5.1900W PF:0.9400 Freq:60.00Hz Lamp Flux:378.276x1 lm		
NAME: ASD-UCS-12D5CC	TYPE: N/A	WEIGHT: N/A
SPEC.: N/A	DIM.: N/A	SERIAL No.: N/A
MFR.: ASD Lighting Corp	SUR.: N/A	Shielding Angle: N/A



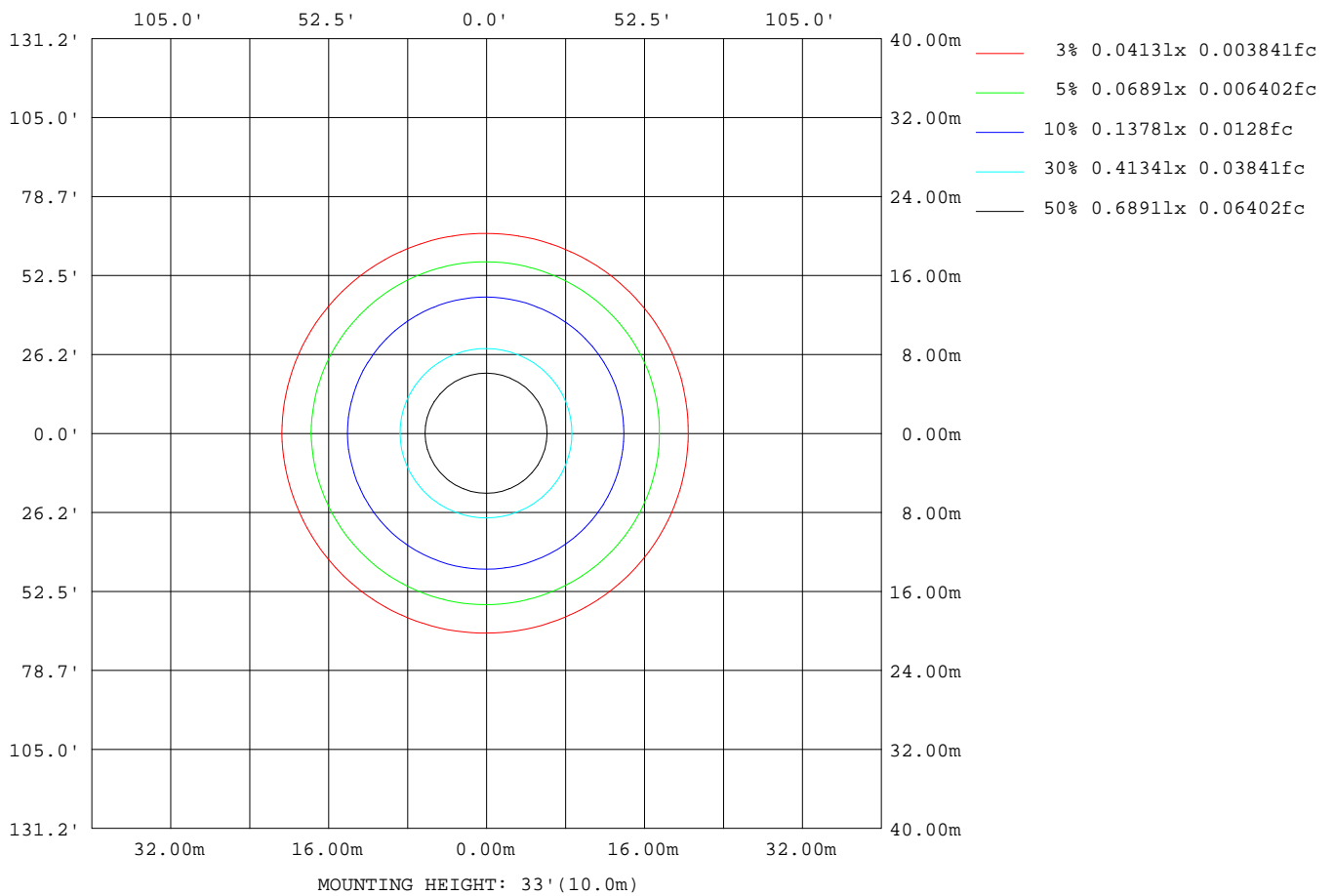
Note:The Curves indicate the illuminated area and the average illumination when the luminaire is at different distance.

C Range: 0 - 360DEG  
 C Interval: 22.5DEG  
 Test Speed: HIGH  
 Temperature:24.8DEG  
 Operators:Water  
 Test Date:2023-09-06

γ Range: 0 - 180DEG  
 γ Interval: 1.0DEG  
 Test System:EVERFINE GO-R5000\_V2 SYSTEM V2.00.446  
 Humidity:34%  
 Test Distance:2.513m [K=1.0000]  
 Remarks: Model No: UCL-31B-12G

**ISOLUX DIAGRAM**

Test:U:120.03V I:0.0460A P:5.1900W PF:0.9400 Freq:60.00Hz Lamp Flux:378.276x1 lm		
NAME: ASD-UCS-12D5CC	TYPE: N/A	WEIGHT: N/A
SPEC.: N/A	DIM.: N/A	SERIAL No.: N/A
MFR.: ASD Lighting Corp	SUR.: N/A	Shielding Angle: N/A



C Range: 0 - 360DEG  
 C Interval: 22.5DEG  
 Test Speed: HIGH  
 Temperature:24.8DEG  
 Operators:Water  
 Test Date:2023-09-06

γ Range: 0 - 180DEG  
 γ Interval: 1.0DEG  
 Test System:EVERFINE GO-R5000\_V2 SYSTEM V2.00.446  
 Humidity:34%  
 Test Distance:2.513m [K=1.0000]  
 Remarks: Model No: UCL-31B-12G

LED Avg.L Report

Test:U:120.03V I:0.0460A P:5.1900W PF:0.9400 Freq:60.00Hz Lamp Flux:378.276x1 lm		
NAME: ASD-UCS-12D5CC	TYPE: N/A	WEIGHT: N/A
SPEC.: N/A	DIM.: N/A	SERIAL No.: N/A
MFR.: ASD Lighting Corp	SUR.: N/A	Shielding Angle: N/A

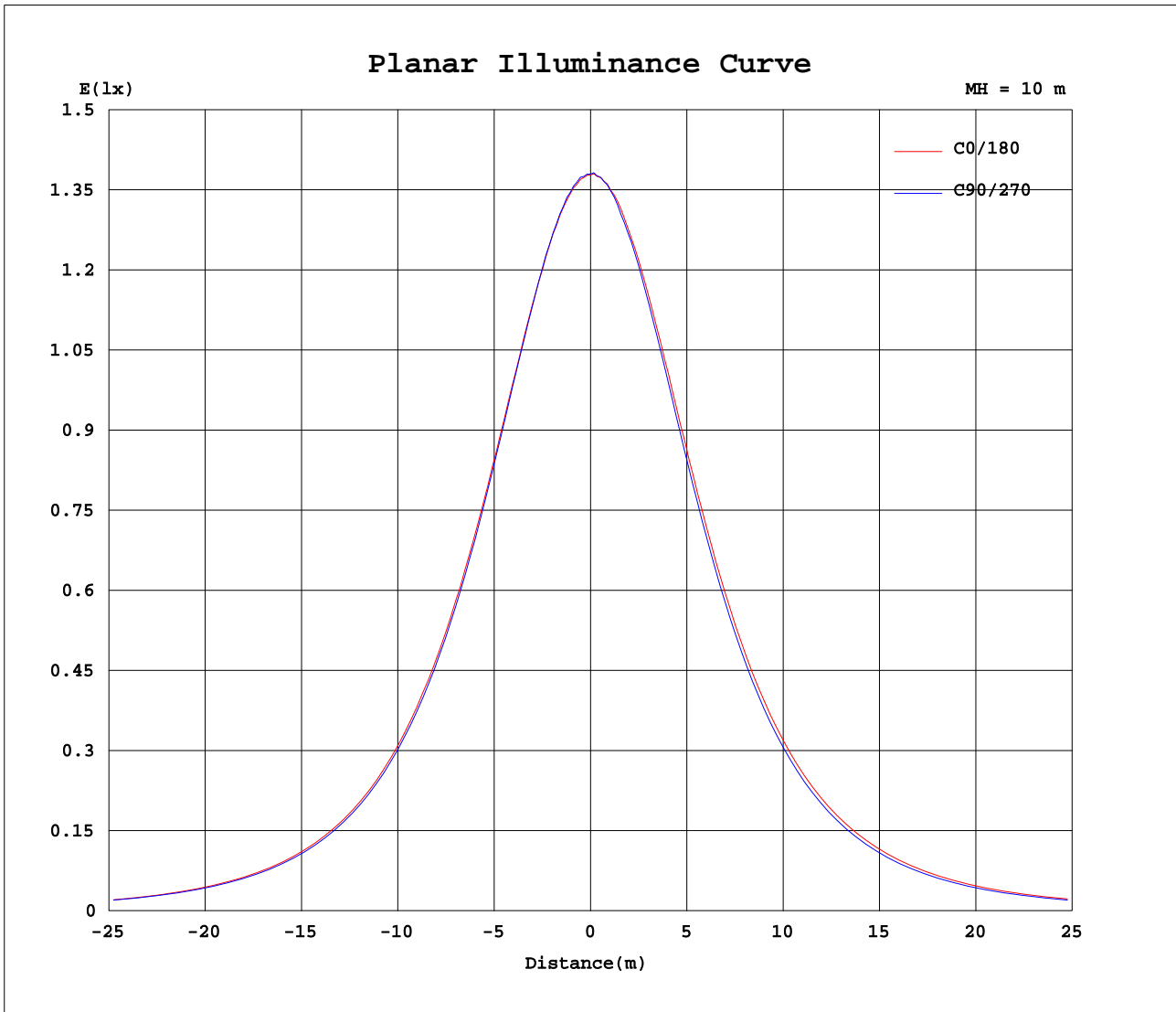
AvgL	cd/m2
L_0~180(65)av	12941
L_0~180(75)av	11485
L_0~180(85)av	8854
L_90~270(65)av	12173
L_90~270(75)av	10607
L_90~270(85)av	7043
L_45(65)av	12574
L_45(75)av	11062
L_45(85)av	7733

Standard: GB/T 29293-2012

C Range: 0 - 360DEG  
 C Interval: 22.5DEG  
 Test Speed: HIGH  
 Temperature:24.8DEG  
 Operators:Water  
 Test Date:2023-09-06

γ Range: 0 - 180DEG  
 γ Interval: 1.0DEG  
 Test System:EVERFINE GO-R5000\_V2 SYSTEM V2.00.446  
 Humidity:34%  
 Test Distance:2.513m [K=1.0000]  
 Remarks: Model No: UCL-31B-12G

**Planar Illuminance Curve**



C Range: 0 - 360DEG  
 C Interval: 22.5DEG  
 Test Speed: HIGH  
 Temperature: 24.8DEG  
 Operators: Water  
 Test Date: 2023-09-06

$\gamma$  Range: 0 - 180DEG  
 $\gamma$  Interval: 1.0DEG  
 Test System: EVERFINE GO-R5000\_V2 SYSTEM V2.00.446  
 Humidity: 34%  
 Test Distance: 2.513m [K=1.0000]  
 Remarks: Model No: UCL-31B-12G

LUMINOUS DISTRIBUTION INTENSITY DATA

Test:U:120.03V I:0.0460A P:5.1900W PF:0.9400 Freq:60.00Hz Lamp Flux:378.276x1 lm		
NAME: ASD-UCS-12D5CC	TYPE: N/A	WEIGHT: N/A
SPEC.: N/A	DIM.: N/A	SERIAL No.: N/A
MFR.: ASD Lighting Corp	SUR.: N/A	Shielding Angle: N/A

Table--1

UNIT: cd

C(DEG) γ (DEG)	0	22.5	45	67.5	90	112.5	135	157.5	180	202.5	225	247.5	270	292.5	315	337.5			
0	138	138	138	138	138	138	138	138	138	138	138	138	138	138	138	138			
5	137	137	137	137	137	137	137	137	138	137	137	137	137	137	137	137			
10	134	135	134	134	135	135	135	135	136	135	135	135	135	135	135	135			
15	131	131	131	131	131	131	131	132	133	132	132	131	131	132	132	132			
20	126	126	125	125	125	126	126	127	128	128	127	127	126	126	126	127			
25	120	120	120	119	119	119	120	121	122	122	122	121	120	120	120	121			
30	113	113	112	112	112	112	113	115	116	116	114	113	113	113	113	114			
35	106	105	104	103	103	104	105	107	108	108	107	106	105	105	105	106			
40	96.7	96.4	95.4	94.7	94.7	95.5	96.9	98.4	99.4	99.5	98.0	96.7	95.9	95.6	96.3	97.1			
45	87.5	87.1	86.1	85.2	85.3	86.1	87.5	88.8	90.3	90.0	88.5	87.3	86.5	86.4	87.0	87.9			
50	77.7	77.4	76.3	75.6	75.5	76.4	77.9	79.2	80.5	80.2	78.8	77.5	76.6	76.4	77.1	78.1			
55	67.5	67.1	66.1	65.4	65.4	66.1	67.5	68.9	70.3	69.9	68.3	67.0	66.2	66.2	67.0	67.9			
60	57.1	56.7	55.9	55.1	55.1	55.9	57.1	58.3	59.8	59.3	57.7	56.5	55.7	55.7	56.5	57.5			
65	46.1	45.9	45.4	44.6	44.5	45.1	46.4	47.5	48.8	48.3	46.9	45.6	44.8	45.0	45.9	46.9			
70	35.3	35.1	34.7	34.3	34.2	34.6	35.7	36.5	37.9	37.3	36.1	34.8	34.1	34.4	35.2	35.9			
75	24.7	24.5	24.2	24.1	23.9	24.4	25.2	25.8	26.9	26.4	25.4	24.3	23.7	24.0	24.7	25.3			
80	14.8	14.5	14.5	14.5	14.4	14.8	15.3	15.7	16.7	16.2	15.3	14.5	13.9	14.1	14.7	15.4			
85	6.03	5.86	5.90	5.88	5.90	6.07	6.29	6.52	7.37	6.91	5.86	5.09	4.76	4.65	5.34	6.45			
90	0.02	0.02	0.02	0.01	0.01	0.01	0.02	0.03	0.06	0.04	0.01	0.00	0.00	0.00	0.00	0.02			
95	0.02	0.02	0.02	0.02	0.02	0.02	0.02	0.02	0.00	0.00	0.00	0.00	0.00	0.00	0.00	0.00			
100	0.03	0.04	0.04	0.03	0.03	0.04	0.05	0.04	0.01	0.00	0.01	0.01	0.01	0.01	0.01	0.01			
105	0.03	0.04	0.04	0.03	0.03	0.04	0.04	0.04	0.02	0.01	0.01	0.01	0.01	0.01	0.01	0.01			
110	0.04	0.04	0.04	0.04	0.04	0.04	0.04	0.04	0.02	0.01	0.02	0.02	0.02	0.02	0.01	0.02			
115	0.04	0.04	0.04	0.04	0.04	0.05	0.05	0.05	0.03	0.02	0.02	0.02	0.02	0.02	0.02	0.02			
120	0.05	0.05	0.05	0.05	0.05	0.05	0.06	0.06	0.03	0.03	0.03	0.03	0.03	0.03	0.03	0.03			
125	0.06	0.06	0.06	0.06	0.07	0.07	0.07	0.07	0.03	0.03	0.04	0.03	0.03	0.03	0.03	0.03			
130	0.07	0.08	0.08	0.08	0.08	0.08	0.08	0.08	0.04	0.04	0.04	0.04	0.04	0.04	0.04	0.04			
135	0.09	0.09	0.10	0.10	0.11	0.10	0.10	0.09	0.05	0.05	0.05	0.05	0.05	0.05	0.05	0.05			
140	0.12	0.13	0.13	0.13	0.14	0.14	0.13	0.12	0.06	0.06	0.06	0.06	0.06	0.06	0.06	0.06			
145	0.15	0.16	0.17	0.17	0.18	0.18	0.17	0.16	0.07	0.07	0.07	0.07	0.07	0.07	0.07	0.07			
150	0.18	0.19	0.20	0.20	0.21	0.20	0.19	0.18	0.07	0.07	0.08	0.08	0.08	0.08	0.08	0.08			
155	0.21	0.22	0.22	0.23	0.23	0.23	0.22	0.22	0.09	0.08	0.09	0.09	0.09	0.09	0.09	0.10			
160	0.23	0.24	0.24	0.24	0.24	0.24	0.24	0.23	0.11	0.10	0.11	0.11	0.11	0.10	0.10	0.11			
165	0.23	0.23	0.23	0.24	0.25	0.24	0.24	0.23	0.12	0.12	0.11	0.12	0.12	0.12	0.11	0.12			
170	0.22	0.22	0.22	0.22	0.22	0.22	0.22	0.22	0.13	0.13	0.12	0.13	0.13	0.12	0.13	0.13			
175	0.21	0.20	0.20	0.20	0.20	0.20	0.20	0.21	0.15	0.15	0.15	0.14	0.14	0.14	0.15	0.15			
180	0.18	0.18	0.17	0.16	0.16	0.17	0.18	0.18	0.18	0.18	0.17	0.17	0.16	0.17	0.17	0.18			

C Range: 0 - 360DEG  
 C Interval: 22.5DEG  
 Test Speed: HIGH  
 Temperature:24.8DEG  
 Operators:Water  
 Test Date:2023-09-06

γ Range: 0 - 180DEG  
 γ Interval: 1.0DEG  
 Test System:EVERFINE GO-R5000\_V2 SYSTEM V2.00.446  
 Humidity:34%  
 Test Distance:2.513m [K=1.0000]  
 Remarks: Model No: UCL-31B-12G