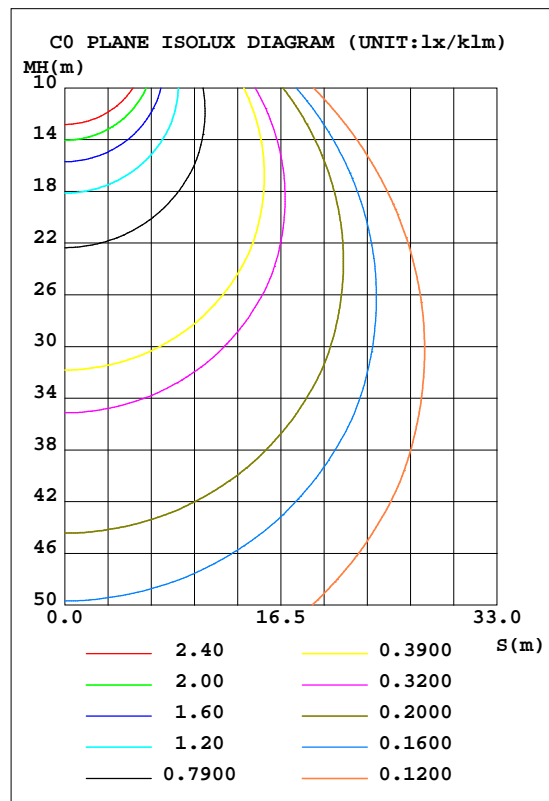
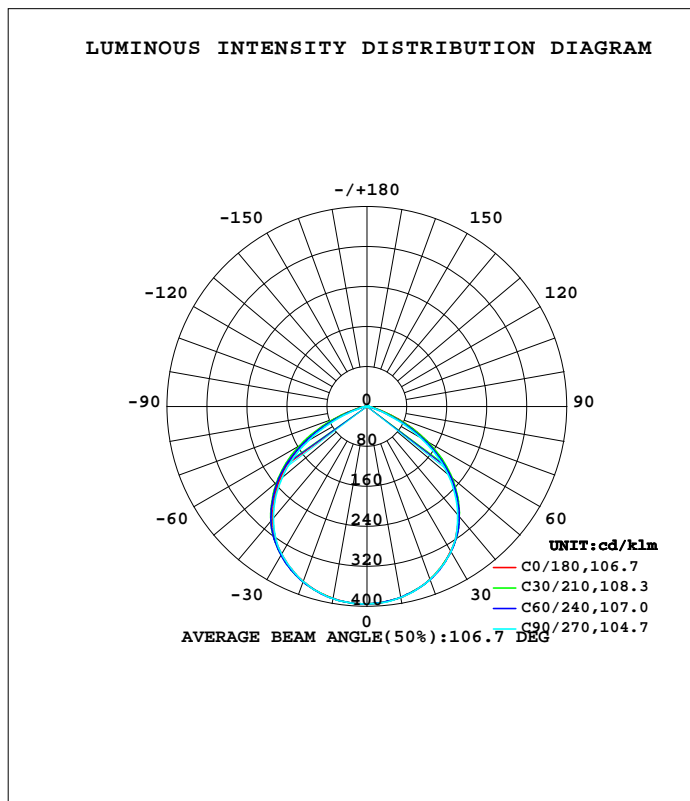


LUMINAIRE PHOTOMETRIC TEST REPORT

Test:U:120.19V I:0.0895A P:9.5206W PF:0.8209 Freq:59.98Hz Lamp Flux:650x1 lm		
NAME: LED DOWNLIGHT	TYPE:	WEIGHT:
SPEC.:	DIM.:	SERIAL No.:
MFR.: ASD LIGHTING CORP	SUR.:	Shielding Angle:

DATA OF LAMP		PHOTOMETRIC DATA			
AMBERKS-4D10AC-WH (2700K)		Imax(cd/klm)	395.2	S/MH(C0/180)	1.28
NOMINAL POWER(W)	10	LOR(%)	100.0	S/MH(C90/270)	1.28
RATED VOLTAGE(V)	120	TOTAL FLUX(lm/klm)	650.0	h UP,DN(C0-180)	0.5,48.9
NOMINAL FLUX(lm)	650	CIE CLASS	DIRECT	h UP,DN(C180-360)	0.4,50.2
LAMPS INSIDE	1	h up(%)	0.9	CIBSE SHR NOM	1.25
TEST VOLTAGE(V)	120	h down(%)	99.1	CIBSE SHR MAX	1.35



C Range: 0 - 360DEG  
 C Interval: 15.0DEG  
 Test Speed: HIGH  
 Temperature: 25.3DEG  
 Operators:  
 Test Date: 2022-03-14

g Range: 0 - 180DEG  
 g Interval: 1.0DEG  
 Test System: EVERFINE GO-2000B\_V1 SYSTEM V2.00.426  
 Humidity: 65.0%  
 Test Distance: 8.000m [K=1.0125]  
 Remarks:

ZONAL FLUX DIAGRAM

ZONAL FLUX DIAGRAM:

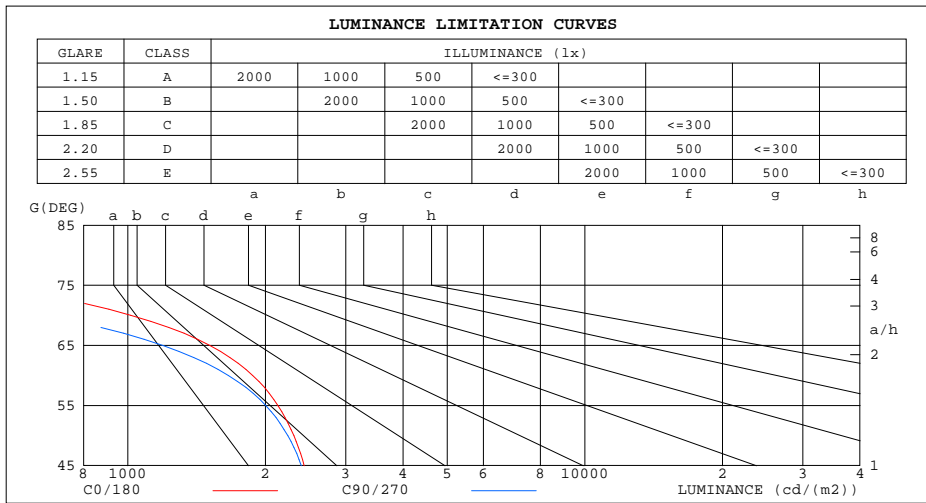
g	C0	C45	C90	C135	C180	C225	C270	C315	g	F zone	F total	%lum,lamp
10	388.1	387.7	388.2	388.9	389.9	389.6	390.4	388.9	0- 10	37.42	37.42	3.74,3.74
20	368.5	368.4	368.7	371.2	372.6	373.0	372.8	371.2	10- 20	107.7	145.1	14.5,14.5
30	335.0	336.1	335.6	340.4	341.2	343.7	341.3	340.0	20- 30	164.4	309.5	31,31
40	284.0	290.2	282.5	295.5	293.3	300.1	291.3	294.3	30- 40	198.6	508.1	50.8,50.8
50	218.5	221.7	212.0	228.8	228.0	235.4	222.1	226.5	40- 50	200.3	708.4	70.8,70.8
60	138.1	135.6	122.0	142.1	147.7	150.4	133.6	139.6	50- 60	163.9	872.3	87.2,87.2
70	51.14	43.66	33.49	48.12	62.06	56.26	41.75	46.05	60- 70	91.37	963.7	96.4,96.4
80	10.53	7.497	6.870	8.754	12.89	10.04	8.147	8.066	70- 80	24.14	987.8	98.8,98.8
90	0.2243	0.2107	0.2039	0.1834	0.2976	0.1836	0.0951	0.1428	80- 90	3.500	991.3	99.1,99.1
100	0.5704	0.5435	0.5092	0.4756	0.4422	0.3935	0.3470	0.4208	90-100	0.3258	991.7	99.2,99.2
110	0.9920	0.9577	0.9169	0.8899	0.8502	0.7873	0.7412	0.8214	100-110	0.6947	992.3	99.2,99.2
120	1.461	1.413	1.372	1.345	1.306	1.235	1.197	1.263	110-120	1.082	993.4	99.3,99.3
130	1.896	1.840	1.834	1.766	1.741	1.650	1.638	1.697	120-130	1.379	994.8	99.5,99.5
140	2.250	2.166	2.181	2.112	2.087	1.996	2.019	2.044	130-140	1.494	996.3	99.6,99.6
150	2.515	2.478	2.487	2.418	2.373	2.335	2.338	2.363	140-150	1.417	997.7	99.8,99.8
160	2.800	2.771	2.766	2.723	2.679	2.648	2.685	2.709	150-160	1.185	998.9	99.9,99.9
170	3.025	3.001	2.990	2.974	2.957	2.940	2.949	2.974	160-170	0.8083	999.7	100,100
180	3.120	3.123	3.119	3.144	3.120	3.137	3.119	3.130	170-180	0.2899	1000	100,100
DEG	LUMINOUS INTENSITY:cd/klm									UNIT:lm/klm		

C Range: 0 - 360DEG  
 C Interval: 15.0DEG  
 Test Speed: HIGH  
 Temperature:25.3DEG  
 Operators:  
 Test Date:2022-03-14

g Range: 0 - 180DEG  
 g Interval: 1.0DEG  
 Test System:EVERFINE GO-2000B\_V1 SYSTEM V2.00.426  
 Humidity:65.0%  
 Test Distance:8.000m [K=1.0125]  
 Remarks:

LUMINANCE LIMITATION CURVES

Test:U:120.19V I:0.0895A P:9.5206W PF:0.8209 Freq:59.98Hz Lamp Flux:650x1 lm		
NAME: LED DOWNLIGHT	TYPE:	WEIGHT:
SPEC.:	DIM.:	SERIAL No.:
MFR.: ASD LIGHTING CORP	SUR.:	Shielding Angle:



LUMINANCE cd/(m2)		
G(DEG)	C0/180	C90/270
85	291	75
80	412	269
75	525	382
70	1016	665
65	1512	1192
60	1877	1658
55	2130	2004
50	2308	2241
45	2433	2399

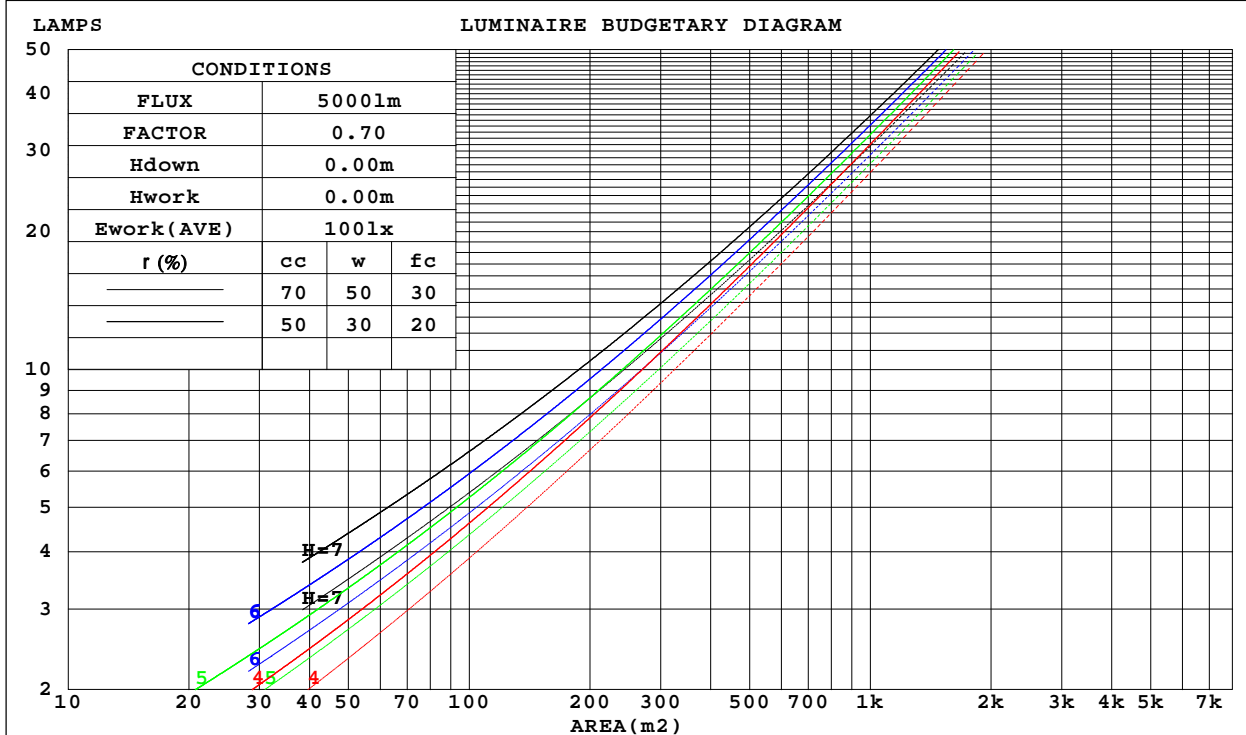
C Range: 0 - 360DEG  
 C Interval: 15.0DEG  
 Test Speed: HIGH  
 Temperature: 25.3DEG  
 Operators:  
 Test Date: 2022-03-14

g Range: 0 - 180DEG  
 g Interval: 1.0DEG  
 Test System: EVERFINE GO-2000B\_V1 SYSTEM V2.00.426  
 Humidity: 65.0%  
 Test Distance: 8.000m [K=1.0125]  
 Remarks:

CU AND LUMINAIRE BUDGETARY ESTIMATE DIAGRAM

Test:U:120.19V I:0.0895A P:9.5206W PF:0.8209 Freq:59.98Hz Lamp Flux:650x1 lm		
NAME: LED DOWNLIGHT	TYPE:	WEIGHT:
SPEC.:	DIM.:	SERIAL No.:
MFR.: ASD LIGHTING CORP	SUR.:	Shielding Angle:

r <sub>cc</sub>	80%			70%			50%			30%			10%			0
r <sub>w</sub>	50%	30%	10%	50%	30%	10%	50%	30%	10%	50%	30%	10%	50%	30%	10%	0
r <sub>fc</sub>	20%			20%			20%			20%			20%			0
RCR	RCR:Room Cavity Ratio      Coefficients of Utilization(CU)															
0.0	1.19	1.19	1.19	1.16	1.16	1.16	1.11	1.11	1.11	1.06	1.06	1.06	1.01	1.01	1.01	.99
1.0	1.06	1.02	.99	1.04	1.01	.98	.99	.97	.94	.95	.93	.91	.92	.90	.88	.86
2.0	.94	.88	.83	.92	.86	.82	.88	.84	.80	.85	.81	.78	.82	.79	.76	.74
3.0	.83	.76	.70	.82	.75	.69	.79	.73	.68	.76	.71	.67	.73	.69	.66	.63
4.0	.74	.66	.60	.73	.65	.60	.70	.64	.59	.68	.62	.58	.66	.61	.57	.55
5.0	.67	.58	.52	.65	.58	.52	.63	.56	.51	.61	.55	.50	.59	.54	.50	.48
6.0	.60	.52	.46	.59	.51	.45	.57	.50	.45	.56	.49	.44	.54	.48	.44	.42
7.0	.55	.46	.40	.54	.46	.40	.52	.45	.40	.51	.44	.40	.49	.44	.39	.37
8.0	.50	.42	.36	.49	.41	.36	.48	.41	.36	.47	.40	.35	.45	.40	.35	.33
9.0	.46	.38	.33	.45	.38	.32	.44	.37	.32	.43	.37	.32	.42	.36	.32	.30
10.0	.42	.35	.30	.42	.34	.29	.41	.34	.29	.40	.33	.29	.39	.33	.29	.27



C Range: 0 - 360DEG  
 C Interval: 15.0DEG  
 Test Speed: HIGH  
 Temperature:25.3DEG  
 Operators:  
 Test Date:2022-03-14

g Range: 0 - 180DEG  
 g Interval: 1.0DEG  
 Test System:EVERFINE GO-2000B\_V1 SYSTEM V2.00.426  
 Humidity:65.0%  
 Test Distance:8.000m [K=1.0125]  
 Remarks:

WEC AND CCEC

Test:U:120.19V I:0.0895A P:9.5206W PF:0.8209 Freq:59.98Hz Lamp Flux:650x1 lm		
NAME: LED DOWNLIGHT	TYPE:	WEIGHT:
SPEC.:	DIM.:	SERIAL No.:
MFR.: ASD LIGHTING CORP	SUR.:	Shielding Angle:

rcc	80%			70%			50%			30%			10%			0
rw	50%	30%	10%	50%	30%	10%	50%	30%	10%	50%	30%	10%	50%	30%	10%	0
rfc	20%			20%			20%			20%			20%			0
RCR	RCR:Room Cavity Ratio						Wall Exitance Coefficients(WEC)									
0.0																
1.0	.263	.149	.047	.255	.146	.046	.242	.139	.044	.229	.132	.042	.218	.126	.041	
2.0	.256	.141	.043	.250	.138	.042	.238	.132	.041	.227	.128	.040	.217	.123	.039	
3.0	.243	.129	.039	.238	.127	.038	.227	.123	.037	.218	.119	.037	.209	.116	.036	
4.0	.229	.119	.035	.224	.117	.035	.215	.114	.034	.206	.111	.033	.198	.108	.033	
5.0	.214	.109	.032	.210	.108	.031	.202	.105	.031	.194	.102	.030	.187	.100	.030	
6.0	.201	.101	.029	.197	.100	.029	.190	.097	.028	.183	.095	.028	.176	.093	.028	
7.0	.189	.093	.026	.185	.092	.026	.179	.090	.026	.172	.088	.026	.167	.087	.025	
8.0	.177	.087	.024	.174	.086	.024	.168	.084	.024	.163	.082	.024	.157	.081	.024	
9.0	.167	.081	.023	.164	.080	.022	.159	.079	.022	.154	.077	.022	.149	.076	.022	
10.0	.158	.076	.021	.155	.075	.021	.150	.074	.021	.146	.072	.021	.142	.071	.020	

rcc	80%			70%			50%			30%			10%			0
rw	50%	30%	10%	50%	30%	10%	50%	30%	10%	50%	30%	10%	50%	30%	10%	0
rfc	20%			20%			20%			20%			20%			0
RCR	RCR:Room Cavity Ratio						Ceiling Cavity Exitance Coefficients(CCEC)									
0.0	.197	.197	.197	.168	.168	.168	.115	.115	.115	.066	.066	.066	.021	.021	.021	
1.0	.184	.163	.145	.157	.140	.125	.108	.096	.086	.062	.056	.050	.020	.018	.016	
2.0	.174	.139	.109	.149	.119	.094	.102	.083	.066	.059	.048	.039	.019	.016	.013	
3.0	.166	.121	.085	.142	.104	.074	.098	.072	.052	.056	.042	.030	.018	.014	.010	
4.0	.159	.107	.068	.136	.093	.059	.094	.065	.042	.054	.038	.025	.017	.012	.008	
5.0	.152	.097	.056	.130	.084	.049	.090	.058	.035	.052	.034	.021	.017	.011	.007	
6.0	.145	.088	.048	.124	.076	.042	.086	.054	.029	.050	.031	.017	.016	.010	.006	
7.0	.138	.081	.041	.119	.071	.036	.082	.049	.026	.048	.029	.015	.015	.010	.005	
8.0	.132	.076	.037	.114	.066	.032	.079	.046	.023	.046	.027	.013	.015	.009	.004	
9.0	.127	.071	.033	.109	.061	.029	.076	.043	.020	.044	.025	.012	.014	.008	.004	
10.0	.121	.066	.030	.105	.058	.026	.073	.041	.019	.042	.024	.011	.014	.008	.004	

C Range: 0 - 360DEG  
 C Interval: 15.0DEG  
 Test Speed: HIGH  
 Temperature:25.3DEG  
 Operators:  
 Test Date:2022-03-14

g Range: 0 - 180DEG  
 g Interval: 1.0DEG  
 Test System:EVERFINE GO-2000B\_V1 SYSTEM V2.00.426  
 Humidity:65.0%  
 Test Distance:8.000m [K=1.0125]  
 Remarks:

UGR(Unified Glare Rating) Table

Test:U:120.19V I:0.0895A P:9.5206W PF:0.8209 Freq:59.98Hz Lamp Flux:650x1 lm										
NAME: LED DOWNLIGHT					TYPE:			WEIGHT:		
SPEC.:					DIM.:			SERIAL No.:		
MFR.: ASD LIGHTING CORP					SUR.:			Shielding Angle:		
ceiling/cavity	0.7	0.7	0.5	0.5	0.3	0.7	0.7	0.5	0.5	0.3
walls	0.5	0.3	0.5	0.3	0.3	0.5	0.3	0.5	0.3	0.3
working plane	0.2	0.2	0.2	0.2	0.2	0.2	0.2	0.2	0.2	0.2
Room dimensions	Viewed crosswise					Viewed endwise				
x = 2H y = 2H	16.0	17.5	16.4	17.9	18.2	15.6	17.1	16.0	17.4	17.8
3H	16.8	18.2	17.2	18.5	18.9	16.0	17.4	16.4	17.7	18.1
4H	16.9	18.2	17.3	18.5	18.9	16.0	17.3	16.5	17.7	18.1
6H	16.9	18.1	17.3	18.5	18.9	16.0	17.2	16.4	17.6	18.0
8H	16.9	18.0	17.3	18.4	18.8	16.0	17.1	16.4	17.5	17.9
12H	16.9	17.9	17.3	18.3	18.8	16.0	17.0	16.4	17.4	17.9
4H 2H	16.3	17.6	16.7	17.9	18.3	16.0	17.3	16.4	17.6	18.0
3H	17.2	18.2	17.6	18.6	19.1	16.5	17.6	16.9	18.0	18.4
4H	17.3	18.2	17.7	18.6	19.1	16.5	17.5	17.0	17.9	18.4
6H	17.3	18.1	17.8	18.6	19.1	16.6	17.4	17.0	17.8	18.3
8H	17.3	18.1	17.8	18.5	19.0	16.5	17.3	17.0	17.7	18.2
12H	17.3	18.0	17.8	18.5	19.0	16.5	17.2	17.0	17.7	18.2
8H 4H	17.2	18.0	17.7	18.4	18.9	16.6	17.3	17.0	17.8	18.3
6H	17.3	17.9	17.8	18.4	18.9	16.6	17.2	17.1	17.7	18.2
8H	17.3	17.8	17.8	18.3	18.9	16.5	17.1	17.1	17.6	18.1
12H	17.3	17.8	17.8	18.3	18.8	16.5	17.0	17.0	17.5	18.1
12H 4H	17.2	17.9	17.7	18.4	18.9	16.5	17.2	17.0	17.7	18.2
6H	17.2	17.8	17.8	18.3	18.8	16.5	17.1	17.1	17.6	18.1
8H	17.2	17.7	17.8	18.2	18.8	16.5	17.0	17.0	17.5	18.1
CIE190: 2010										

CIE190: 2010  
Area: 0.1 m2

C Range: 0 - 360DEG  
C Interval: 15.0DEG  
Test Speed: HIGH  
Temperature:25.3DEG  
Operators:  
Test Date:2022-03-14

g Range: 0 - 180DEG  
g Interval: 1.0DEG  
Test System:EVERFINE GO-2000B\_V1 SYSTEM V2.00.426  
Humidity:65.0%  
Test Distance:8.000m [K=1.0125]  
Remarks:

## UTILIZATION FACTORS TABLE

Test:U:120.19V I:0.0895A P:9.5206W PF:0.8209 Freq:59.98Hz Lamp Flux:650x1 lm		
NAME: LED DOWNLIGHT	TYPE:	WEIGHT:
SPEC.:	DIM.:	SERIAL No.:
MFR.: ASD LIGHTING CORP	SUR.:	Shielding Angle:

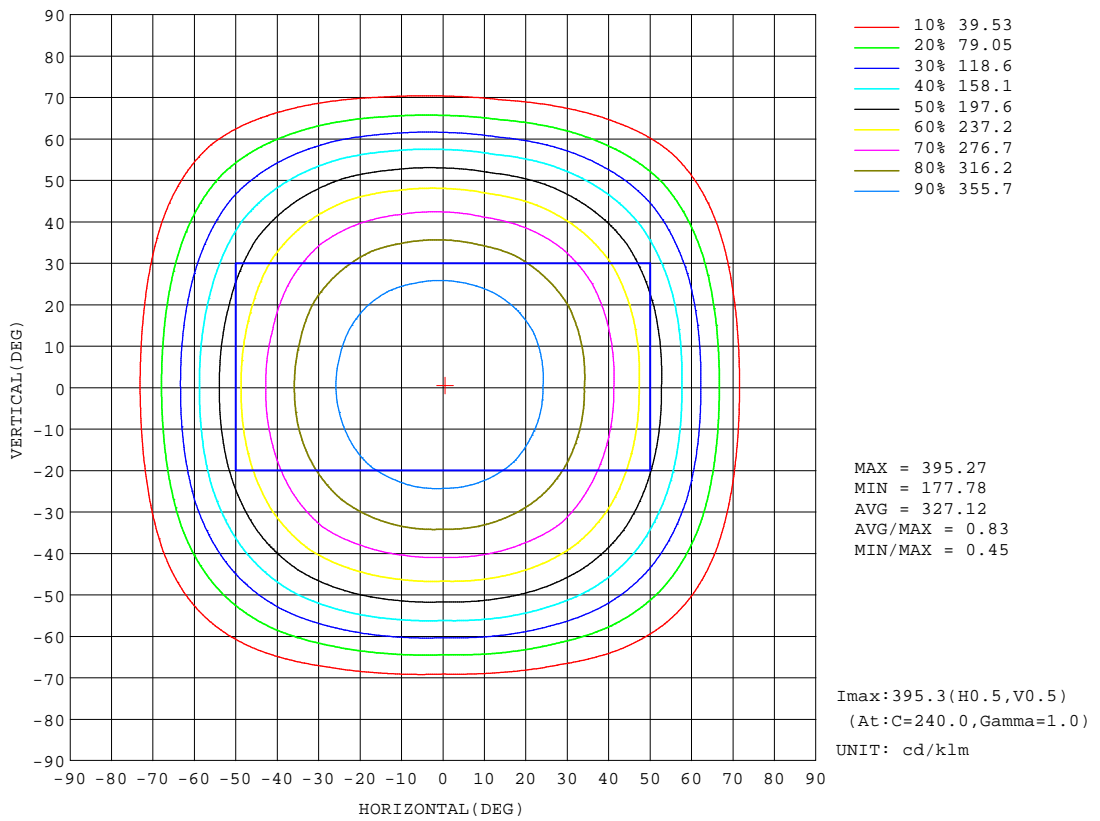
REFLECTANCE										
Ceiling	0.8	0.8	0.8	0.7	0.7	0.7	0.5	0.5	0.5	0
Walls	0.7	0.5	0.3	0.7	0.5	0.3	0.7	0.5	0.3	0
Working plane	0.2	0.2	0.2	0.2	0.2	0.2	0.2	0.2	0.2	0
ROOM INDEX	UTILIZATION FACTORS (PERCENT) $k(RI) \times RCR = 5$									
k = 0.60	60	49	43	60	49	43	59	49	42	36
0.80	71	60	53	70	60	53	68	59	53	46
1.00	80	70	63	79	69	63	76	70	62	56
1.25	87	78	71	86	77	71	83	75	70	63
1.50	92	83	77	90	82	76	87	80	75	68
2.00	98	91	85	96	90	84	93	87	83	75
2.50	102	95	90	100	94	89	96	91	87	79
3.00	105	99	94	103	97	93	99	94	91	82
4.00	108	103	99	106	101	98	102	98	95	86
5.00	110	106	103	108	104	101	103	100	98	89
ROOM INDEX	UF(total)									Direct
According to DIN EN 13032-2 2004			Suspended				SHRNOM = 1.25			

C Range: 0 - 360DEG  
C Interval: 15.0DEG  
Test Speed: HIGH  
Temperature: 25.3DEG  
Operators:  
Test Date: 2022-03-14

g Range: 0 - 180DEG  
g Interval: 1.0DEG  
Test System: EVERFINE GO-2000B\_V1 SYSTEM V2.00.426  
Humidity: 65.0%  
Test Distance: 8.000m [K=1.0125]  
Remarks:

ISOCANDELA DIAGRAM

Test:U:120.19V I:0.0895A P:9.5206W PF:0.8209 Freq:59.98Hz Lamp Flux:650x1 lm		
NAME: LED DOWNLIGHT	TYPE:	WEIGHT:
SPEC.:	DIM.:	SERIAL No.:
MFR.: ASD LIGHTING CORP	SUR.:	Shielding Angle:



C Range: 0 - 360DEG  
 C Interval: 15.0DEG  
 Test Speed: HIGH  
 Temperature:25.3DEG  
 Operators:  
 Test Date:2022-03-14

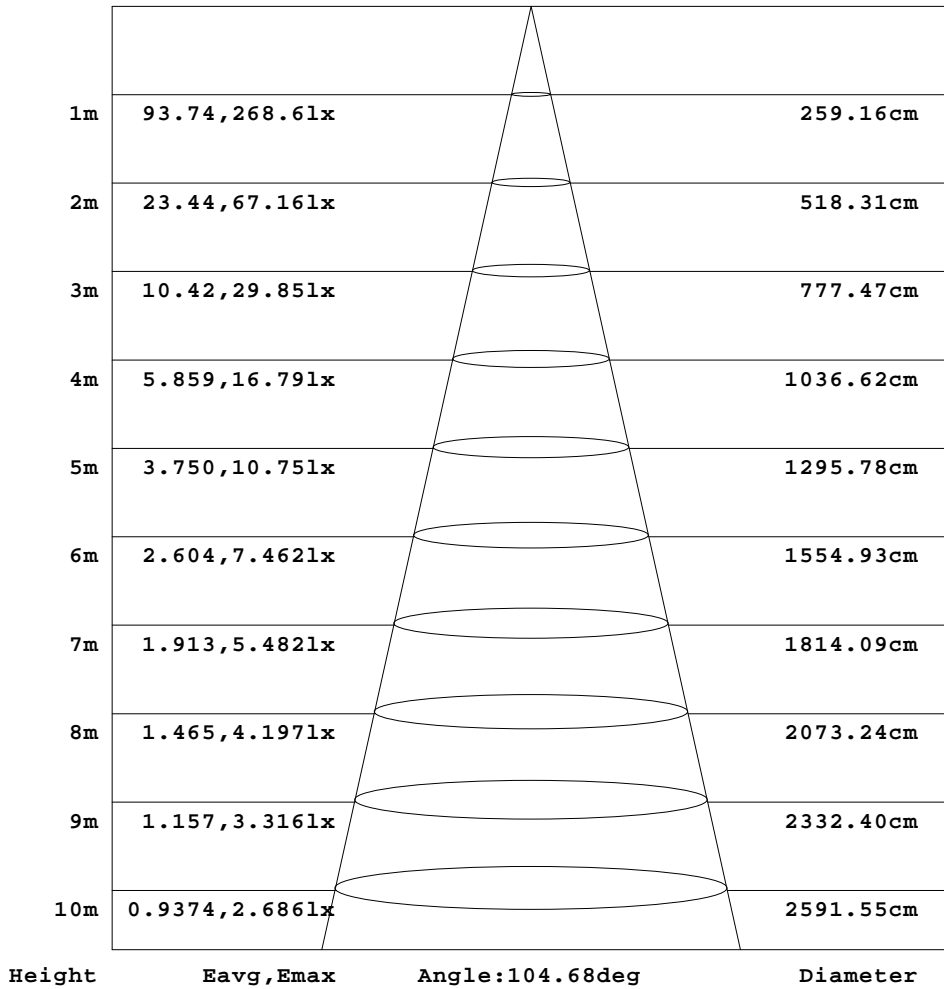
g Range: 0 - 180DEG  
 g Interval: 1.0DEG  
 Test System:EVERFINE GO-2000B\_V1 SYSTEM V2.00.426  
 Humidity:65.0%  
 Test Distance:8.000m [K=1.0125]  
 Remarks:



AAI Figure

Test:U:120.19V I:0.0895A P:9.5206W PF:0.8209 Freq:59.98Hz Lamp Flux:650x1 lm		
NAME: LED DOWNLIGHT	TYPE:	WEIGHT:
SPEC.:	DIM.:	SERIAL No.:
MFR.: ASD LIGHTING CORP	SUR.:	Shielding Angle:

Flux out:518.6 lm



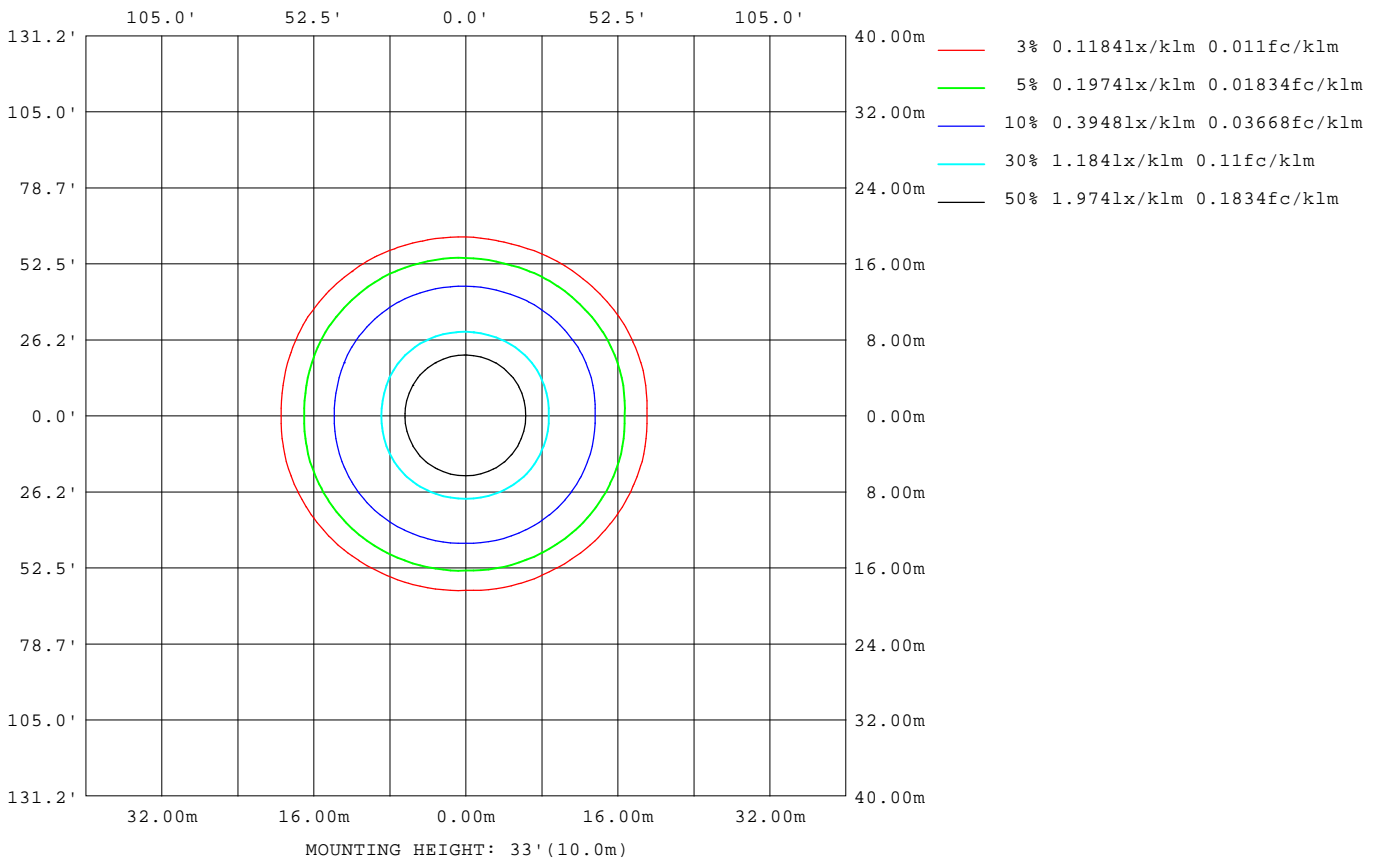
Note:The Curves indicate the illuminated area and the average illumination when the luminaire is at different distance.

C Range: 0 - 360DEG  
 C Interval: 15.0DEG  
 Test Speed: HIGH  
 Temperature:25.3DEG  
 Operators:  
 Test Date:2022-03-14

g Range: 0 - 180DEG  
 g Interval: 1.0DEG  
 Test System:EVERFINE GO-2000B\_V1 SYSTEM V2.00.426  
 Humidity:65.0%  
 Test Distance:8.000m [K=1.0125]  
 Remarks:

ISOLUX DIAGRAM

Test:U:120.19V I:0.0895A P:9.5206W PF:0.8209 Freq:59.98Hz Lamp Flux:650x1 lm		
NAME: LED DOWNLIGHT	TYPE:	WEIGHT:
SPEC.:	DIM.:	SERIAL No.:
MFR.: ASD LIGHTING CORP	SUR.:	Shielding Angle:



C Range: 0 - 360DEG  
 C Interval: 15.0DEG  
 Test Speed: HIGH  
 Temperature: 25.3DEG  
 Operators:  
 Test Date: 2022-03-14

g Range: 0 - 180DEG  
 g Interval: 1.0DEG  
 Test System: EVERFINE GO-2000B\_V1 SYSTEM V2.00.426  
 Humidity: 65.0%  
 Test Distance: 8.000m [K=1.0125]  
 Remarks:

## LED Avg.L Report

Test:U:120.19V I:0.0895A P:9.5206W PF:0.8209 Freq:59.98Hz Lamp Flux:650x1 lm		
NAME: LED DOWNLIGHT	TYPE:	WEIGHT:
SPEC.:	DIM.:	SERIAL No.:
MFR.: ASD LIGHTING CORP	SUR.:	Shielding Angle:

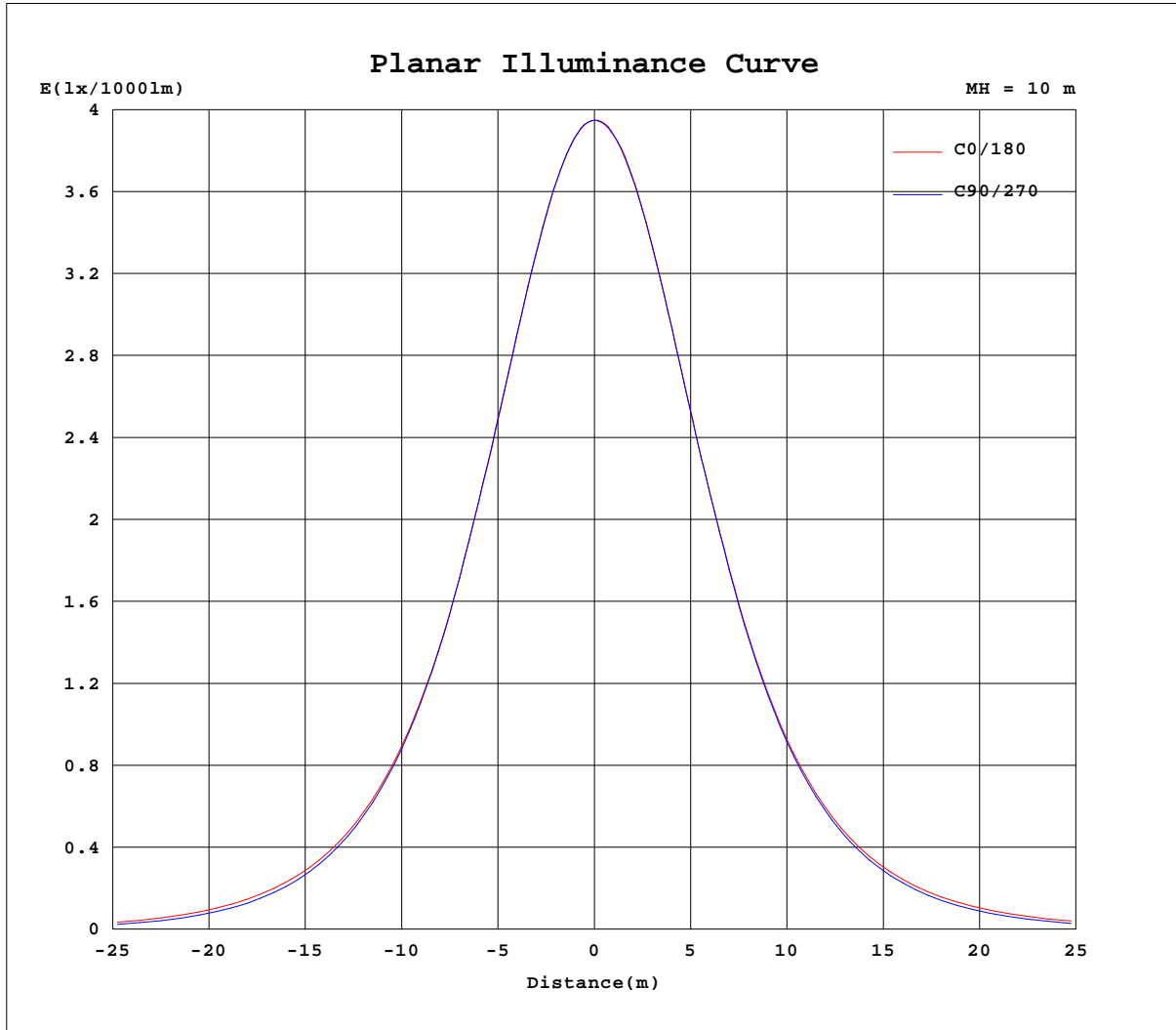
AvgL	cd/m2
L_0~180(65)av	1595
L_0~180(75)av	635
L_0~180(85)av	380
L_90~270(65)av	1280
L_90~270(75)av	408
L_90~270(85)av	96
L_45(65)av	1502
L_45(75)av	508
L_45(85)av	149

Standard: GB/T 29293-2012

C Range: 0 - 360DEG  
C Interval: 15.0DEG  
Test Speed: HIGH  
Temperature:25.3DEG  
Operators:  
Test Date:2022-03-14

g Range: 0 - 180DEG  
g Interval: 1.0DEG  
Test System:EVERFINE GO-2000B\_V1 SYSTEM V2.00.426  
Humidity:65.0%  
Test Distance:8.000m [K=1.0125]  
Remarks:

Planar Illuminance Curve



C Range: 0 - 360DEG  
 C Interval: 15.0DEG  
 Test Speed: HIGH  
 Temperature: 25.3DEG  
 Operators:  
 Test Date: 2022-03-14

g Range: 0 - 180DEG  
 g Interval: 1.0DEG  
 Test System: EVERFINE GO-2000B\_V1 SYSTEM V2.00.426  
 Humidity: 65.0%  
 Test Distance: 8.000m [K=1.0125]  
 Remarks:

LUMINOUS DISTRIBUTION INTENSITY DATA

Test:U:120.19V I:0.0895A P:9.5206W PF:0.8209 Freq:59.98Hz Lamp Flux:650x1 lm		
NAME: LED DOWNLIGHT	TYPE:	WEIGHT:
SPEC.:	DIM.:	SERIAL No.:
MFR.: ASD LIGHTING CORP	SUR.:	Shielding Angle:

Table--1

UNIT: cd/klm

C(DEG) g (DEG)	0	15	30	45	60	75	90	105	120	135	150	165	180	195	210	225	240	255	270
0	395	395	395	395	395	395	395	395	395	395	395	395	395	395	395	395	395	395	395
5	393	393	393	392	393	393	393	393	393	394	394	394	394	394	394	394	394	394	394
10	388	388	388	388	388	388	388	389	389	389	389	390	390	390	390	390	390	390	390
15	380	380	380	380	380	380	380	380	381	381	382	382	383	383	383	383	384	383	383
20	368	369	368	368	369	369	369	369	370	371	371	372	373	373	374	373	374	373	373
25	353	353	353	354	354	354	354	355	356	357	358	358	359	359	360	360	360	359	358
30	335	335	336	336	336	336	336	337	338	340	341	341	341	342	343	344	344	342	341
35	312	313	315	315	314	313	312	314	317	320	320	321	321	322	324	324	324	321	319
40	284	286	288	290	287	285	283	285	290	295	296	295	293	294	300	300	299	293	291
45	253	255	257	259	255	252	250	253	258	266	266	264	263	264	270	272	268	262	259
50	218	221	223	222	219	215	212	216	222	229	232	230	228	230	236	235	233	226	222
55	180	183	184	181	177	173	169	174	181	188	191	192	189	192	198	196	192	184	180
60	138	141	139	136	129	126	122	127	134	142	147	150	148	151	154	150	146	138	134
65	94.1	96.2	92.6	87.4	80.1	77.4	74.1	78.6	84.3	93.2	99.6	105	104	107	108	102	97.0	89.5	85.1
70	51.1	51.7	48.2	43.7	37.5	35.3	33.5	36.7	40.6	48.1	54.8	60.7	62.1	63.3	62.6	56.3	50.6	44.7	41.7
75	20.0	20.2	19.1	17.0	15.2	14.9	14.6	15.4	16.1	19.0	23.0	26.8	28.3	28.4	27.7	23.4	19.8	17.4	16.5
80	10.5	10.1	8.38	7.50	6.88	6.84	6.87	7.25	7.73	8.75	9.77	11.8	12.9	12.7	11.4	10.0	9.35	8.56	8.15
85	3.73	3.04	1.73	1.11	0.90	0.95	0.96	1.15	1.26	1.93	2.86	4.42	6.01	5.42	4.06	3.14	2.52	1.75	1.50
90	0.22	0.22	0.23	0.21	0.22	0.22	0.20	0.15	0.17	0.18	0.21	0.20	0.30	0.26	0.18	0.18	0.14	0.13	0.10
95	0.38	0.37	0.39	0.37	0.36	0.37	0.34	0.28	0.31	0.31	0.32	0.31	0.25	0.26	0.25	0.24	0.21	0.22	0.20
100	0.57	0.56	0.56	0.54	0.55	0.54	0.51	0.46	0.47	0.48	0.50	0.50	0.44	0.43	0.40	0.39	0.37	0.37	0.35
105	0.77	0.77	0.77	0.74	0.74	0.73	0.69	0.65	0.67	0.68	0.69	0.69	0.63	0.63	0.59	0.58	0.55	0.55	0.54
110	0.99	0.98	0.98	0.96	0.96	0.94	0.92	0.87	0.88	0.89	0.91	0.92	0.85	0.84	0.80	0.79	0.77	0.75	0.74
115	1.23	1.22	1.21	1.19	1.18	1.18	1.15	1.09	1.10	1.11	1.13	1.14	1.07	1.05	1.01	1.01	0.98	0.97	0.97
120	1.46	1.45	1.44	1.41	1.41	1.41	1.37	1.33	1.34	1.34	1.36	1.37	1.31	1.28	1.24	1.24	1.19	1.19	1.20
125	1.68	1.67	1.66	1.64	1.63	1.62	1.62	1.56	1.56	1.56	1.58	1.60	1.53	1.50	1.47	1.44	1.42	1.41	1.43
130	1.90	1.88	1.86	1.84	1.84	1.84	1.83	1.76	1.77	1.77	1.78	1.81	1.74	1.70	1.67	1.65	1.63	1.63	1.64
135	2.08	2.07	2.05	2.00	1.99	2.03	2.02	1.96	1.96	1.94	1.97	1.99	1.92	1.89	1.86	1.83	1.81	1.82	1.84
140	2.25	2.22	2.21	2.17	2.17	2.17	2.18	2.13	2.11	2.11	2.15	2.16	2.09	2.06	2.03	2.00	1.98	2.00	2.02
145	2.40	2.37	2.34	2.32	2.32	2.33	2.34	2.30	2.28	2.26	2.30	2.31	2.24	2.22	2.19	2.17	2.13	2.19	2.20
150	2.52	2.50	2.49	2.48	2.47	2.47	2.49	2.44	2.43	2.42	2.43	2.45	2.37	2.35	2.33	2.34	2.32	2.32	2.34
155	2.64	2.64	2.64	2.61	2.62	2.65	2.64	2.61	2.60	2.57	2.59	2.60	2.51	2.50	2.49	2.49	2.48	2.52	2.51
160	2.80	2.77	2.78	2.77	2.81	2.80	2.77	2.78	2.76	2.72	2.72	2.74	2.68	2.67	2.65	2.65	2.68	2.69	2.68
165	2.94	2.92	2.90	2.89	2.92	2.91	2.89	2.89	2.88	2.87	2.89	2.88	2.84	2.84	2.80	2.81	2.82	2.83	2.82
170	3.02	3.01	3.00	3.00	3.01	3.01	2.99	2.97	2.98	2.97	3.00	3.00	2.96	2.95	2.95	2.94	2.93	2.93	2.95
175	3.09	3.09	3.09	3.09	3.10	3.08	3.06	3.07	3.06	3.08	3.08	3.07	3.04	3.05	3.05	3.06	3.04	3.04	3.04
180	3.12	3.11	3.11	3.12	3.13	3.12	3.12	3.12	3.12	3.14	3.14	3.12	3.12	3.11	3.12	3.14	3.13	3.11	3.12

C Range: 0 - 360DEG  
 C Interval: 15.0DEG  
 Test Speed: HIGH  
 Temperature:25.3DEG  
 Operators:  
 Test Date:2022-03-14

g Range: 0 - 180DEG  
 g Interval: 1.0DEG  
 Test System:EVERFINE GO-2000B\_V1 SYSTEM V2.00.426  
 Humidity:65.0%  
 Test Distance:8.000m [K=1.0125]  
 Remarks:

LUMINOUS DISTRIBUTION INTENSITY DATA

Test:U:120.19V I:0.0895A P:9.5206W PF:0.8209 Freq:59.98Hz Lamp Flux:650x1 lm		
NAME: LED DOWNLIGHT	TYPE:	WEIGHT:
SPEC.:	DIM.:	SERIAL No.:
MFR.: ASD LIGHTING CORP	SUR.:	Shielding Angle:

Table--2

UNIT: cd/klm

C(DEG) g (DEG)	285	300	315	330	345														
0	395	395	395	395	395														
5	394	394	394	394	394														
10	390	390	389	389	389														
15	382	382	382	381	381														
20	372	372	371	371	370														
25	358	358	357	357	355														
30	340	341	340	339	337														
35	318	320	319	319	316														
40	289	293	294	294	288														
45	257	261	263	263	258														
50	220	225	227	229	224														
55	178	184	186	189	186														
60	131	136	140	144	144														
65	82.5	87.0	90.7	97.2	98.4														
70	39.8	42.7	46.0	52.0	53.4														
75	16.2	16.7	18.0	20.9	21.2														
80	7.71	7.89	8.07	8.82	9.96														
85	1.31	1.27	1.45	2.12	2.84														
90	0.10	0.11	0.14	0.16	0.17														
95	0.22	0.23	0.26	0.28	0.30														
100	0.36	0.39	0.42	0.44	0.48														
105	0.56	0.58	0.62	0.65	0.67														
110	0.77	0.78	0.82	0.86	0.88														
115	0.98	1.01	1.04	1.07	1.11														
120	1.22	1.23	1.26	1.29	1.34														
125	1.45	1.46	1.49	1.52	1.56														
130	1.67	1.67	1.70	1.73	1.77														
135	1.87	1.85	1.88	1.92	1.94														
140	2.05	2.04	2.04	2.09	2.12														
145	2.21	2.19	2.21	2.23	2.26														
150	2.36	2.36	2.36	2.37	2.39														
155	2.55	2.55	2.53	2.54	2.56														
160	2.71	2.74	2.71	2.68	2.71														
165	2.86	2.87	2.86	2.83	2.88														
170	2.96	2.97	2.97	2.97	2.98														
175	3.05	3.07	3.08	3.08	3.07														
180	3.12	3.12	3.13	3.14	3.13														

C Range: 0 - 360DEG  
 C Interval: 15.0DEG  
 Test Speed: HIGH  
 Temperature:25.3DEG  
 Operators:  
 Test Date:2022-03-14

g Range: 0 - 180DEG  
 g Interval: 1.0DEG  
 Test System:EVERFINE GO-2000B\_V1 SYSTEM V2.00.426  
 Humidity:65.0%  
 Test Distance:8.000m [K=1.0125]  
 Remarks: