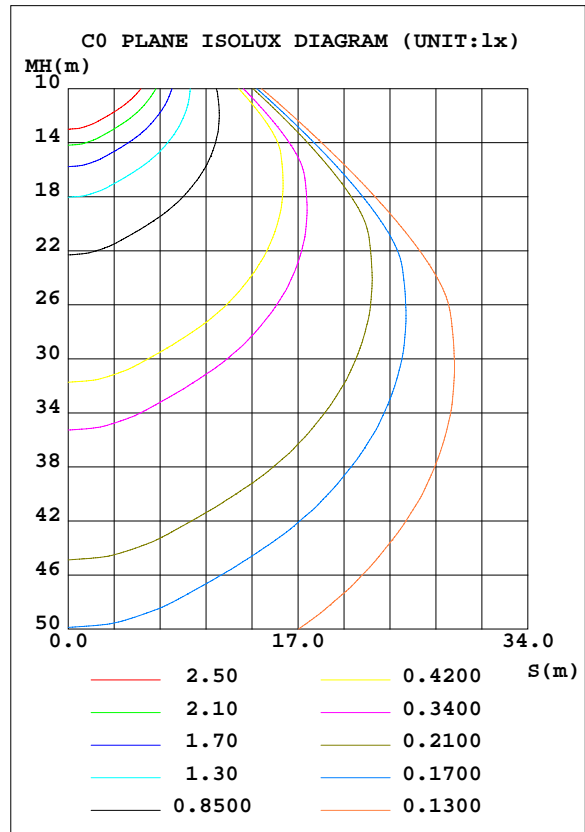
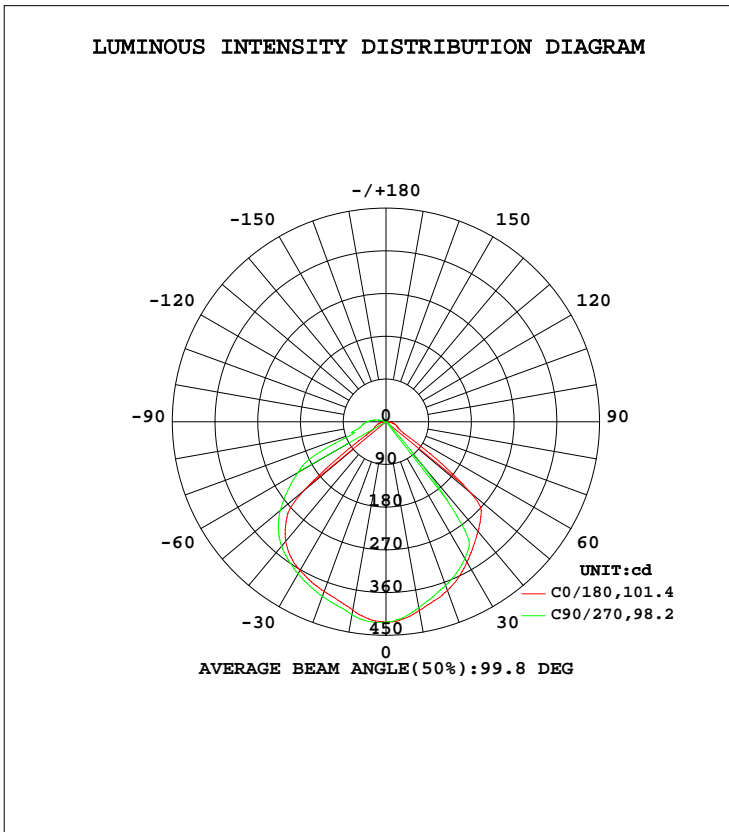


LUMINAIRE PHOTOMETRIC TEST REPORT

Test:U:120.0V I:0.0826A P:9.790W PF:0.9880 Lamp Flux:910.526x1 lm		
NAME: ASD-LSR-1050	TYPE:N/A	WEIGHT:N/A
SPEC.:N/A	DIM.: N/A	SERIAL No.:N/A
MFR.: ASD Lighting Corp	SUR.:N/A	Shielding Angle:N/A

DATA OF LAMP		PHOTOMETRIC DATA			
MODEL	ASD-LSR-1050	Imax(cd)	423.6	S/MH(C0/180)	1.21
NOMINAL POWER(W)	10	LOR(%)	100.0	S/MH(C90/270)	1.10
RATED VOLTAGE(V)	120	TOTAL FLUX(lm)	910.53	$\eta$ UP, DN(C0-180)	1.3,63.8
NOMINAL FLUX(lm)	910.526	CIE CLASS	DIRECT	$\eta$ UP, DN(C180-360)	0.1,34.9
LAMPS INSIDE	1	$\eta$ up(%)	1.4	CIBSE SHR NOM	1.00
TEST VOLTAGE(V)	120	$\eta$ down(%)	98.6	CIBSE SHR MAX	1.15



C Range: 0 - 360DEG  
 C Interval: 22.5DEG  
 Test Speed: HIGH  
 Temperature:25.2DEG  
 Operators:ben  
 Test Date:2017-08-07

$\gamma$  Range: 0 - 180DEG  
 $\gamma$  Interval: 1.0DEG  
 Test System:EVERFINE GO-R5000\_V2 SYSTEM V2.0.351  
 Humidity:45%  
 Test Distance:2.447m [K=1.0000]  
 Remarks:

ZONAL FLUX DIAGRAM

ZONAL FLUX DIAGRAM:

γ	C0	C45	C90	C135	C180	C225	C270	C315	γ	Φ zone	Φ total	%lum, lamp
10	403.1	407.2	413.2	410.3	403.8	399.3	397.6	400.8	0- 10	39.47	39.47	4.33,4.33
20	380.6	385.0	391.7	392.7	378.3	371.8	366.9	372.3	10- 20	110.6	150.1	16.5,16.5
30	362.1	364.2	370.0	364.6	341.4	340.2	332.5	339.3	20- 30	169.4	319.5	35.1,35.1
40	329.0	336.7	342.3	329.3	301.8	248.0	121.8	263.9	30- 40	205.1	524.6	57.6,57.6
50	226.3	291.3	290.9	283.4	233.9	18.76	10.28	17.95	40- 50	166.1	690.8	75.9,75.9
60	31.07	204.4	214.1	199.0	33.53	9.981	3.446	9.134	50- 60	111.0	801.8	88.1,88.1
70	21.03	57.18	75.02	52.44	23.69	1.900	0.0112	1.486	60- 70	55.27	857.0	94.1,94.1
80	10.97	37.00	53.10	37.06	12.63	0.0116	0.0209	0.0146	70- 80	24.30	881.3	96.8,96.8
90	0.0145	25.42	39.79	25.81	0.2354	0.0268	0.0409	0.0292	80- 90	16.55	897.9	98.6,98.6
100	0.0246	9.916	22.27	10.40	0.0126	0.0515	0.0699	0.0541	90-100	9.103	907.0	99.6,99.6
110	0.0567	0.0077	0.0063	0.0111	0.0356	0.0793	0.1045	0.0877	100-110	2.627	909.6	99.9,99.9
120	0.1018	0.0425	0.0265	0.0471	0.0661	0.1192	0.1490	0.1296	110-120	0.0650	909.7	99.9,99.9
130	0.1651	0.1202	0.0999	0.1238	0.1128	0.1791	0.2108	0.1922	120-130	0.1035	909.8	99.9,99.9
140	0.2790	0.2423	0.2327	0.2570	0.1869	0.2553	0.2779	0.2707	130-140	0.1527	909.9	99.9,99.9
150	0.4656	0.4325	0.4392	0.4716	0.2705	0.3026	0.3243	0.3258	140-150	0.1983	910.1	100,100
160	0.6015	0.5921	0.6095	0.6426	0.3426	0.3542	0.3740	0.3813	150-160	0.2024	910.3	100,100
170	0.5780	0.5798	0.5991	0.6102	0.3768	0.3801	0.3957	0.4073	160-170	0.1411	910.5	100,100
180	0.4984	0.5041	0.5148	0.5233	0.4989	0.5016	0.5110	0.5229	170-180	0.0474	910.5	100,100
DEG	LUMINOUS INTENSITY:cd Less than 25% Percent = 2.1 %									UNIT:lm		

Conical surface Flux(90deg): 615.17 lm

%lum = 67.6%  
 %lamp = 67.6%

Conical surface Flux(120deg): 801.76 lm

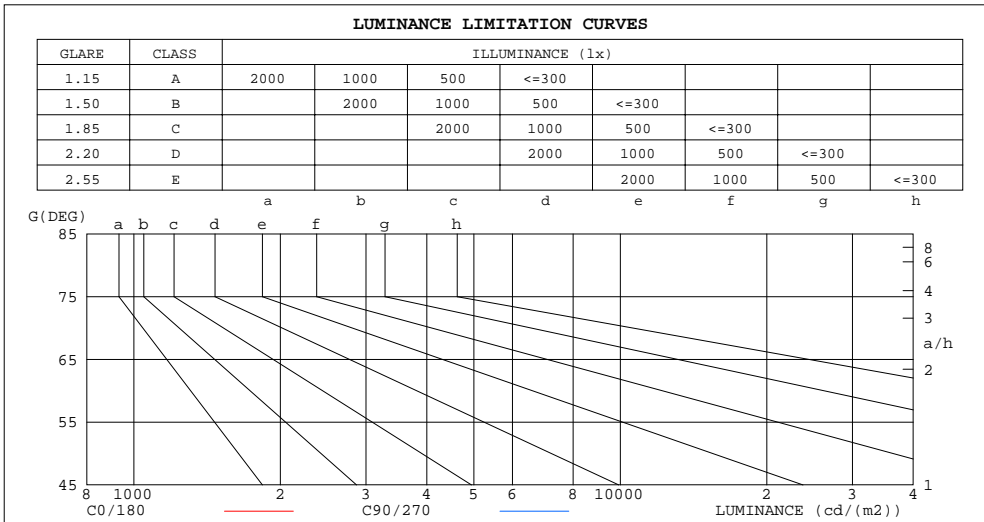
%lum = 88.1%  
 %lamp = 88.1%

C Range: 0 - 360DEG  
 C Interval: 22.5DEG  
 Test Speed: HIGH  
 Temperature:25.2DEG  
 Operators:ben  
 Test Date:2017-08-07

γ Range: 0 - 180DEG  
 γ Interval: 1.0DEG  
 Test System:EVERFINE GO-R5000\_V2 SYSTEM V2.0.351  
 Humidity:45%  
 Test Distance:2.447m [K=1.0000]  
 Remarks:

LUMINANCE LIMITATION CURVES

Test:U:120.0V I:0.0826A P:9.790W PF:0.9880 Lamp Flux:910.526x1 lm		
NAME: ASD-LSR-1050	TYPE:N/A	WEIGHT:N/A
SPEC.:N/A	DIM.: N/A	SERIAL No.:N/A
MFR.: ASD Lighting Corp	SUR.:N/A	Shielding Angle:N/A



LUMINANCE cd/(m2)		
G(DEG)	C0/180	C90/270
85	572946	5355182
80	633303	3060501
75	642699	2473381
70	616223	2195613
65	603413	3816975
60	622760	4286477
55	1227953	4412181
50	3527262	4529196
45	4216221	4537429

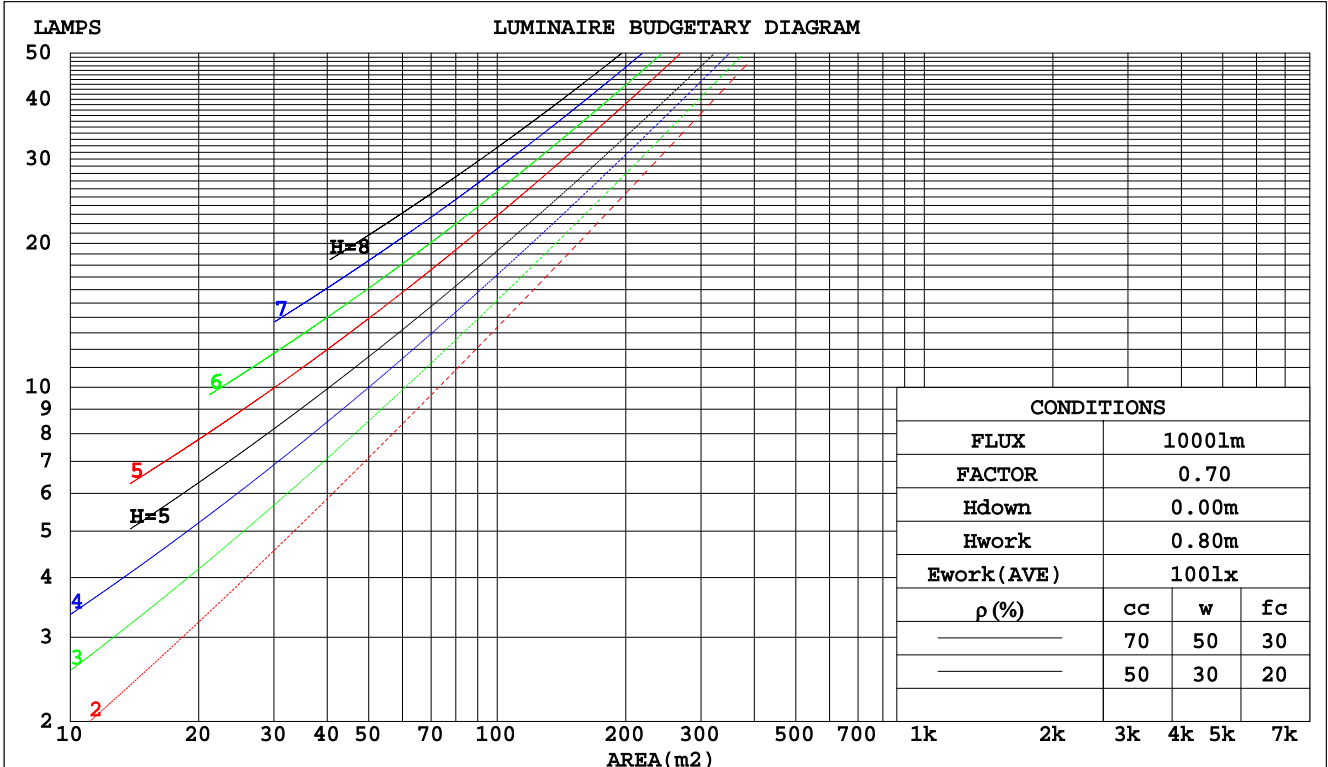
C Range: 0 - 360DEG  
 C Interval: 22.5DEG  
 Test Speed: HIGH  
 Temperature:25.2DEG  
 Operators:ben  
 Test Date:2017-08-07

$\gamma$  Range: 0 - 180DEG  
 $\gamma$  Interval: 1.0DEG  
 Test System:EVERFINE GO-R5000\_V2 SYSTEM V2.0.351  
 Humidity:45%  
 Test Distance:2.447m [K=1.0000]  
 Remarks:

CU AND LUMINAIRE BUDGETARY ESTIMATE DIAGRAM

Test:U:120.0V I:0.0826A P:9.790W PF:0.9880 Lamp Flux:910.526x1 lm		
NAME: ASD-LSR-1050	TYPE:N/A	WEIGHT:N/A
SPEC.:N/A	DIM.: N/A	SERIAL No.:N/A
MFR.: ASD Lighting Corp	SUR.:N/A	Shielding Angle:N/A

pcc	80%			70%			50%			30%			10%			0
	50%	30%	10%	50%	30%	10%	50%	30%	10%	50%	30%	10%	50%	30%	10%	0
pw																0
pfc	20%			20%			20%			20%			20%			0
RCR	RCR:Room Cavity Ratio      Coefficients of Utilization(CU)															
0.0	1.19	1.19	1.19	1.16	1.16	1.16	1.10	1.10	1.10	1.05	1.05	1.05	1.01	1.01	1.01	.99
1.0	1.06	1.02	.99	1.04	1.00	.97	.99	.96	.94	.95	.93	.91	.91	.90	.88	.86
2.0	.94	.89	.84	.93	.87	.83	.89	.84	.80	.85	.82	.78	.82	.79	.77	.74
3.0	.85	.77	.72	.83	.76	.71	.80	.74	.70	.77	.72	.68	.74	.70	.67	.65
4.0	.76	.68	.62	.75	.67	.62	.72	.66	.61	.70	.64	.60	.68	.63	.59	.57
5.0	.69	.61	.55	.68	.60	.54	.65	.59	.54	.63	.58	.53	.62	.56	.52	.50
6.0	.63	.54	.49	.62	.54	.48	.60	.53	.48	.58	.52	.47	.56	.51	.47	.45
7.0	.57	.49	.43	.56	.49	.43	.55	.48	.43	.53	.47	.42	.52	.46	.42	.40
8.0	.52	.45	.39	.52	.44	.39	.50	.44	.39	.49	.43	.38	.48	.42	.38	.36
9.0	.48	.41	.35	.48	.40	.35	.46	.40	.35	.45	.39	.35	.44	.39	.35	.33
10.0	.45	.37	.32	.44	.37	.32	.43	.37	.32	.42	.36	.32	.41	.36	.32	.30



C Range: 0 - 360DEG  
 C Interval: 22.5DEG  
 Test Speed: HIGH  
 Temperature:25.2DEG  
 Operators:ben  
 Test Date:2017-08-07

γ Range: 0 - 180DEG  
 γ Interval: 1.0DEG  
 Test System:EVERFINE GO-R5000\_V2 SYSTEM V2.0.351  
 Humidity:45%  
 Test Distance:2.447m [K=1.0000]  
 Remarks:

WEC AND CCEC

Test:U:120.0V I:0.0826A P:9.790W PF:0.9880 Lamp Flux:910.526x1 lm		
NAME: ASD-LSR-1050	TYPE:N/A	WEIGHT:N/A
SPEC.:N/A	DIM.: N/A	SERIAL No.:N/A
MFR.: ASD Lighting Corp	SUR.:N/A	Shielding Angle:N/A

ρcc	80%			70%			50%			30%			10%			0
ρw	50%	30%	10%	50%	30%	10%	50%	30%	10%	50%	30%	10%	50%	30%	10%	0
ρfc	20%			20%			20%			20%			20%			0
RCR	RCR:Room Cavity Ratio						Wall Exitance Coefficients(WEC)									
0.0																
1.0	.265	.150	.048	.257	.147	.047	.243	.140	.045	.231	.133	.043	.219	.127	.041	
2.0	.250	.137	.042	.243	.134	.041	.231	.129	.040	.220	.124	.039	.210	.119	.037	
3.0	.234	.125	.037	.229	.123	.037	.218	.118	.036	.208	.114	.035	.199	.110	.034	
4.0	.219	.114	.034	.215	.112	.033	.205	.109	.032	.196	.105	.032	.188	.102	.031	
5.0	.206	.105	.030	.201	.103	.030	.193	.100	.030	.185	.098	.029	.178	.095	.029	
6.0	.193	.097	.028	.189	.095	.027	.182	.093	.027	.175	.091	.027	.168	.089	.026	
7.0	.181	.090	.025	.178	.089	.025	.171	.087	.025	.165	.085	.025	.159	.083	.024	
8.0	.171	.084	.023	.168	.083	.023	.162	.081	.023	.156	.079	.023	.151	.077	.023	
9.0	.161	.078	.022	.159	.077	.022	.153	.076	.021	.148	.074	.021	.143	.073	.021	
10.0	.153	.073	.020	.150	.073	.020	.145	.071	.020	.141	.070	.020	.136	.069	.020	

ρcc	80%			70%			50%			30%			10%			0
ρw	50%	30%	10%	50%	30%	10%	50%	30%	10%	50%	30%	10%	50%	30%	10%	0
ρfc	20%			20%			20%			20%			20%			0
RCR	RCR:Room Cavity Ratio						Ceiling Cavity Exitance Coefficients(CCEC)									
0.0	.201	.201	.201	.172	.172	.172	.117	.117	.117	.067	.067	.067	.022	.022	.022	
1.0	.188	.167	.149	.161	.144	.128	.110	.099	.088	.063	.057	.051	.020	.018	.017	
2.0	.177	.143	.114	.152	.123	.098	.104	.085	.069	.060	.049	.040	.019	.016	.013	
3.0	.168	.125	.090	.144	.108	.078	.099	.075	.055	.057	.044	.032	.018	.014	.011	
4.0	.160	.111	.074	.138	.096	.064	.095	.067	.045	.055	.039	.027	.018	.013	.009	
5.0	.153	.100	.062	.131	.087	.054	.091	.061	.038	.052	.036	.022	.017	.012	.007	
6.0	.146	.092	.053	.126	.080	.046	.087	.056	.033	.050	.033	.019	.016	.011	.006	
7.0	.140	.085	.047	.120	.074	.041	.083	.052	.029	.048	.030	.017	.016	.010	.006	
8.0	.134	.079	.042	.115	.069	.036	.080	.048	.026	.046	.028	.015	.015	.009	.005	
9.0	.128	.074	.038	.111	.064	.033	.077	.045	.023	.045	.027	.014	.014	.009	.005	
10.0	.123	.070	.035	.106	.061	.030	.074	.043	.021	.043	.025	.013	.014	.008	.004	

C Range: 0 - 360DEG  
 C Interval: 22.5DEG  
 Test Speed: HIGH  
 Temperature:25.2DEG  
 Operators:ben  
 Test Date:2017-08-07

γ Range: 0 - 180DEG  
 γ Interval: 1.0DEG  
 Test System:EVERFINE GO-R5000\_V2 SYSTEM V2.0.351  
 Humidity:45%  
 Test Distance:2.447m [K=1.0000]  
 Remarks:

UGR(Unified Glare Rating) Table

Test:U:120.0V I:0.0826A P:9.790W PF:0.9880 Lamp Flux:910.526x1 lm		
NAME: ASD-LSR-1050	TYPE:N/A	WEIGHT:N/A
SPEC.:N/A	DIM.: N/A	SERIAL No.:N/A
MFR.: ASD Lighting Corp	SUR.:N/A	Shielding Angle:N/A

ceiling/cavity	0.7	0.7	0.5	0.5	0.3	0.7	0.7	0.5	0.5	0.3
walls	0.5	0.3	0.5	0.3	0.3	0.5	0.3	0.5	0.3	0.3
working plane	0.2	0.2	0.2	0.2	0.2	0.2	0.2	0.2	0.2	0.2
Room dimensions	Viewed crosswise					Viewed endwise				
x = 2H y = 2H	41.0	42.3	41.3	42.6	42.8	43.5	44.8	43.8	45.1	45.3
3H	41.0	42.2	41.3	42.5	42.7	44.3	45.5	44.6	45.8	46.0
4H	41.0	42.2	41.3	42.4	42.7	44.6	45.7	44.9	46.0	46.3
6H	41.0	42.1	41.4	42.4	42.7	44.9	46.0	45.3	46.3	46.6
8H	41.0	42.1	41.4	42.4	42.7	45.2	46.2	45.5	46.5	46.9
12H	41.0	42.0	41.4	42.3	42.7	45.6	46.6	45.9	46.9	47.2
4H 2H	41.7	42.9	42.0	43.1	43.4	43.8	44.9	44.1	45.2	45.5
3H	41.8	42.8	42.2	43.1	43.4	44.6	45.6	45.0	45.9	46.3
4H	41.9	42.8	42.3	43.2	43.5	45.0	45.9	45.4	46.2	46.6
6H	42.0	42.9	42.5	43.2	43.6	45.5	46.3	45.9	46.7	47.1
8H	42.1	42.9	42.5	43.2	43.7	45.9	46.7	46.3	47.1	47.5
12H	42.1	42.8	42.6	43.2	43.7	46.5	47.2	46.9	47.6	48.0
8H 4H	42.1	42.9	42.6	43.3	43.7	45.0	45.7	45.4	46.1	46.5
6H	42.5	43.1	43.0	43.5	44.0	45.7	46.3	46.2	46.8	47.2
8H	42.7	43.2	43.2	43.7	44.2	46.3	46.8	46.8	47.3	47.7
12H	42.9	43.3	43.4	43.8	44.3	47.1	47.5	47.6	48.0	48.5
12H 4H	42.2	42.9	42.7	43.3	43.7	45.0	45.7	45.4	46.1	46.5
6H	42.7	43.2	43.2	43.7	44.2	45.8	46.3	46.2	46.7	47.2
8H	43.0	43.5	43.5	43.9	44.4	46.4	46.9	46.9	47.3	47.8
Variations with the observer position at spacings:										
S = 1.0H	+ 0.4 / - 0.8					+ 0.2 / - 0.3				
1.5H	+ 0.9 / - 1.1					+ 0.4 / - 0.5				
2.0H	+ 1.5 / - 3.4					+ 0.2 / - 0.6				

CIE Pub.117 Corrected 910.5 lm Total Lamp Luminous Flux. (8log(F/F0) = -0.3)

C Range: 0 - 360DEG  
 C Interval: 22.5DEG  
 Test Speed: HIGH  
 Temperature:25.2DEG  
 Operators:ben  
 Test Date:2017-08-07

γ Range: 0 - 180DEG  
 γ Interval: 1.0DEG  
 Test System:EVERFINE GO-R5000\_V2 SYSTEM V2.0.351  
 Humidity:45%  
 Test Distance:2.447m [K=1.0000]  
 Remarks:

**UTILIZATION FACTORS TABLE**

Test:U:120.0V I:0.0826A P:9.790W PF:0.9880 Lamp Flux:910.526x1 lm		
NAME: ASD-LSR-1050	TYPE:N/A	WEIGHT:N/A
SPEC.:N/A	DIM.: N/A	SERIAL No.:N/A
MFR.: ASD Lighting Corp	SUR.:N/A	Shielding Angle:N/A

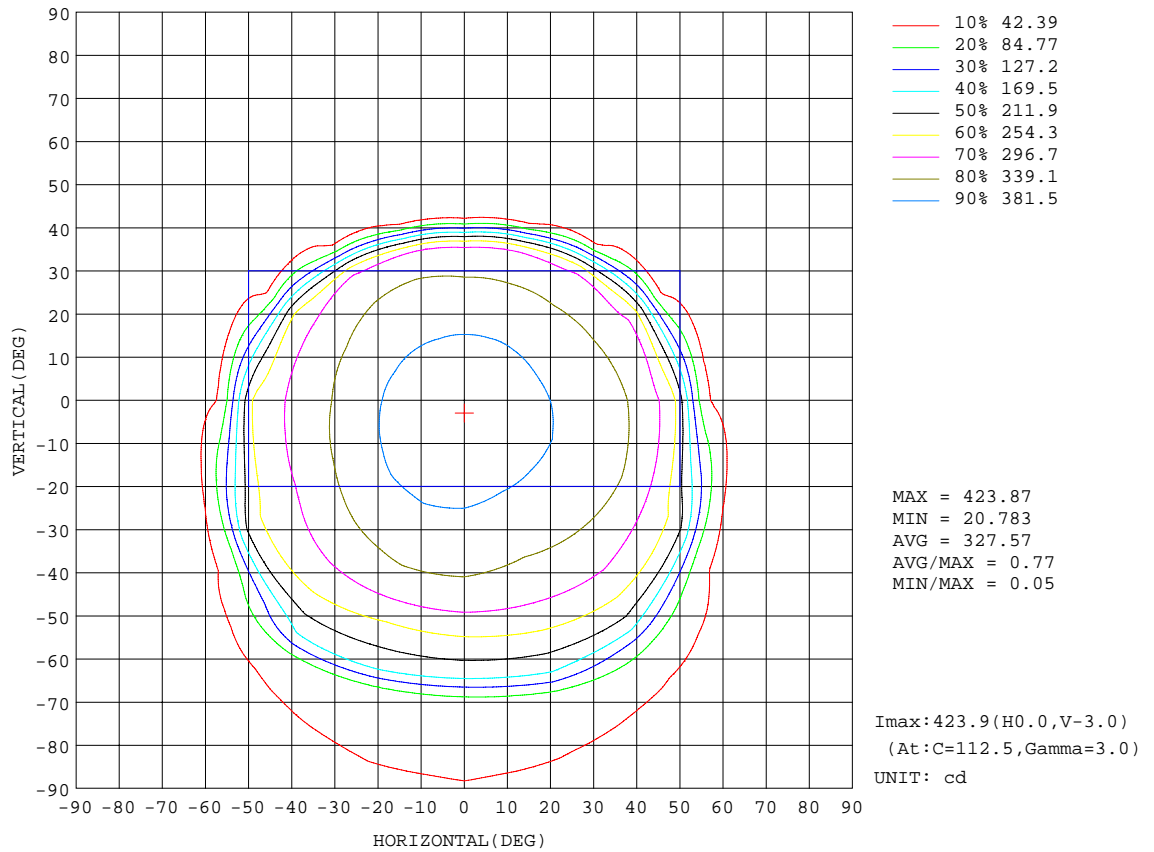
REFLECTANCE										
Ceiling	0.8	0.8	0.8	0.7	0.7	0.7	0.5	0.5	0.5	0
Walls	0.7	0.5	0.3	0.7	0.5	0.3	0.7	0.5	0.3	0
Working plane	0.2	0.2	0.2	0.2	0.2	0.2	0.2	0.2	0.2	0
ROOM INDEX	UTILIZATION FACTORS(PERCENT) $k(RI) \times RCR = 5$									
k = 0.60	65	54	48	64	54	48	63	54	48	42
0.80	75	65	58	74	64	58	72	64	58	52
1.00	83	73	67	82	73	67	79	74	66	60
1.25	89	80	74	88	80	74	85	78	73	67
1.50	94	85	79	92	84	79	89	83	78	71
2.00	99	92	87	97	91	86	94	89	84	77
2.50	102	96	91	100	94	90	97	92	88	80
3.00	105	99	95	103	98	93	99	95	91	83
4.00	108	103	99	106	101	98	102	98	95	86
5.00	110	106	102	108	104	101	103	100	98	89
ROOM INDEX	UF(total)									Direct
According to DIN EN 13032-2 2004			Suspended				SHRNOM = 1.25			

C Range: 0 - 360DEG  
 C Interval: 22.5DEG  
 Test Speed: HIGH  
 Temperature:25.2DEG  
 Operators:ben  
 Test Date:2017-08-07

$\gamma$  Range: 0 - 180DEG  
 $\gamma$  Interval: 1.0DEG  
 Test System:EVERFINE GO-R5000\_V2 SYSTEM V2.0.351  
 Humidity:45%  
 Test Distance:2.447m [K=1.0000]  
 Remarks:

ISOCANDELA DIAGRAM

Test:U:120.0V I:0.0826A P:9.790W PF:0.9880 Lamp Flux:910.526x1 lm		
NAME: ASD-LSR-1050	TYPE:N/A	WEIGHT:N/A
SPEC.:N/A	DIM.: N/A	SERIAL No.:N/A
MFR.: ASD Lighting Corp	SUR.:N/A	Shielding Angle:N/A



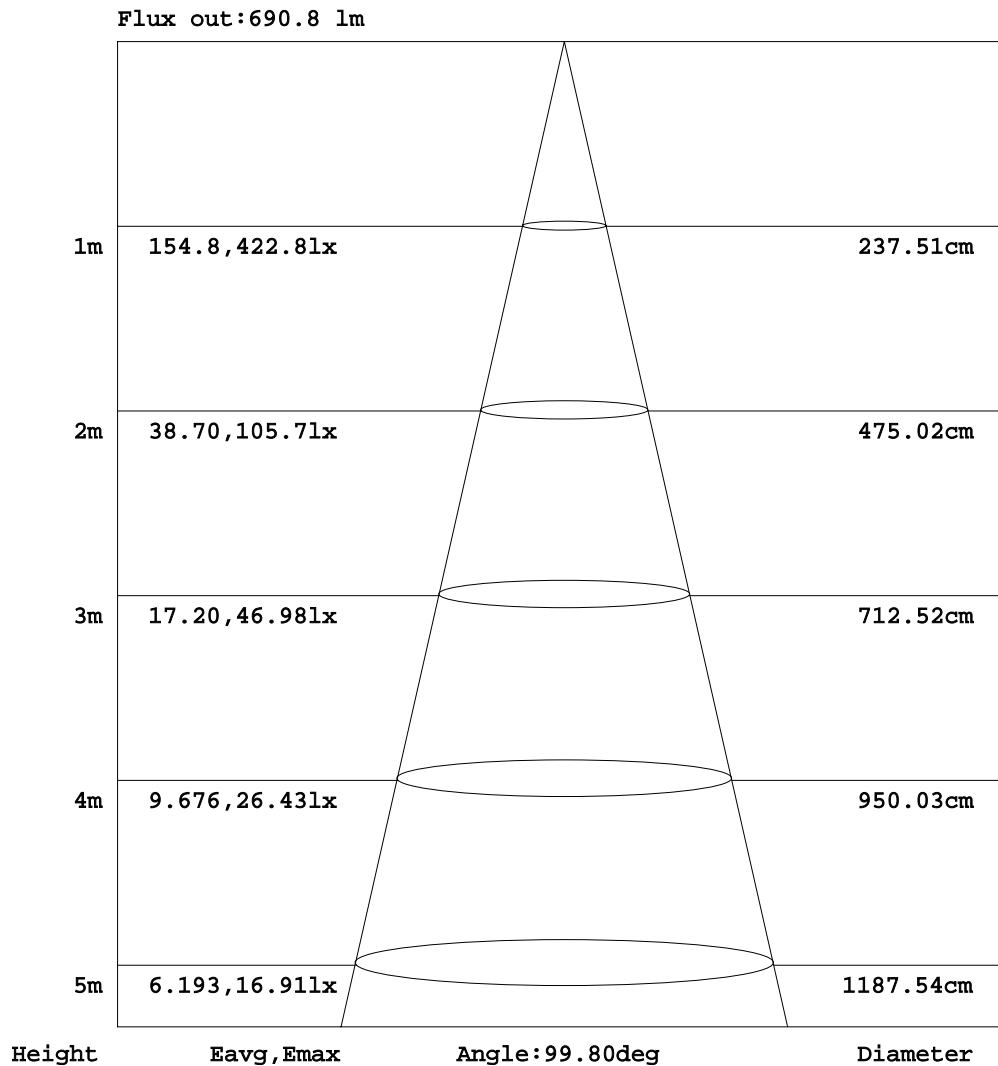
C Range: 0 - 360DEG  
 C Interval: 22.5DEG  
 Test Speed: HIGH  
 Temperature: 25.2DEG  
 Operators: ben  
 Test Date: 2017-08-07

γ Range: 0 - 180DEG  
 γ Interval: 1.0DEG  
 Test System: EVERFINE GO-R5000\_V2 SYSTEM V2.0.351  
 Humidity: 45%  
 Test Distance: 2.447m [K=1.0000]  
 Remarks:



AAI Figure

Test:U:120.0V I:0.0826A P:9.790W PF:0.9880 Lamp Flux:910.526x1 lm		
NAME: ASD-LSR-1050	TYPE:N/A	WEIGHT:N/A
SPEC.:N/A	DIM.: N/A	SERIAL No.:N/A
MFR.: ASD Lighting Corp	SUR.:N/A	Shielding Angle:N/A



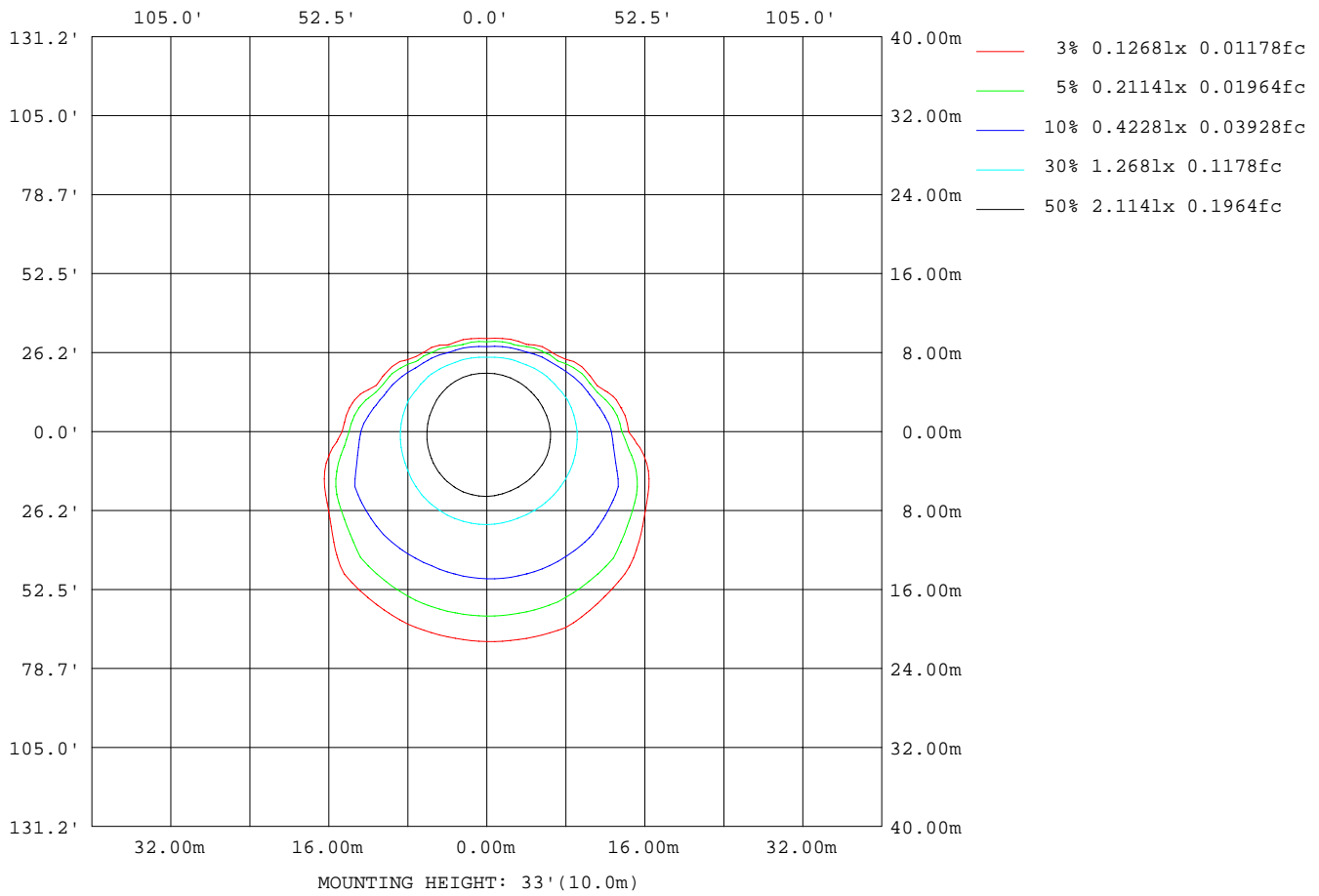
Note:The Curves indicate the illuminated area and the average illumination when the luminaire is at different distance.

C Range: 0 - 360DEG  
 C Interval: 22.5DEG  
 Test Speed: HIGH  
 Temperature:25.2DEG  
 Operators:ben  
 Test Date:2017-08-07

γ Range: 0 - 180DEG  
 γ Interval: 1.0DEG  
 Test System:EVERFINE GO-R5000\_V2 SYSTEM V2.0.351  
 Humidity:45%  
 Test Distance:2.447m [K=1.0000]  
 Remarks:

ISOLUX DIAGRAM

Test:U:120.0V I:0.0826A P:9.790W PF:0.9880 Lamp Flux:910.526x1 lm		
NAME: ASD-LSR-1050	TYPE:N/A	WEIGHT:N/A
SPEC.:N/A	DIM.: N/A	SERIAL No.:N/A
MFR.: ASD Lighting Corp	SUR.:N/A	Shielding Angle:N/A



C Range: 0 - 360DEG  
 C Interval: 22.5DEG  
 Test Speed: HIGH  
 Temperature:25.2DEG  
 Operators:ben  
 Test Date:2017-08-07

γ Range: 0 - 180DEG  
 γ Interval: 1.0DEG  
 Test System:EVERFINE GO-R5000\_V2 SYSTEM V2.0.351  
 Humidity:45%  
 Test Distance:2.447m [K=1.0000]  
 Remarks:

LED Avg.L Report

Test:U:120.0V I:0.0826A P:9.790W PF:0.9880 Lamp Flux:910.526x1 lm		
NAME: ASD-LSR-1050	TYPE:N/A	WEIGHT:N/A
SPEC.:N/A	DIM.: N/A	SERIAL No.:N/A
MFR.: ASD Lighting Corp	SUR.:N/A	Shielding Angle:N/A

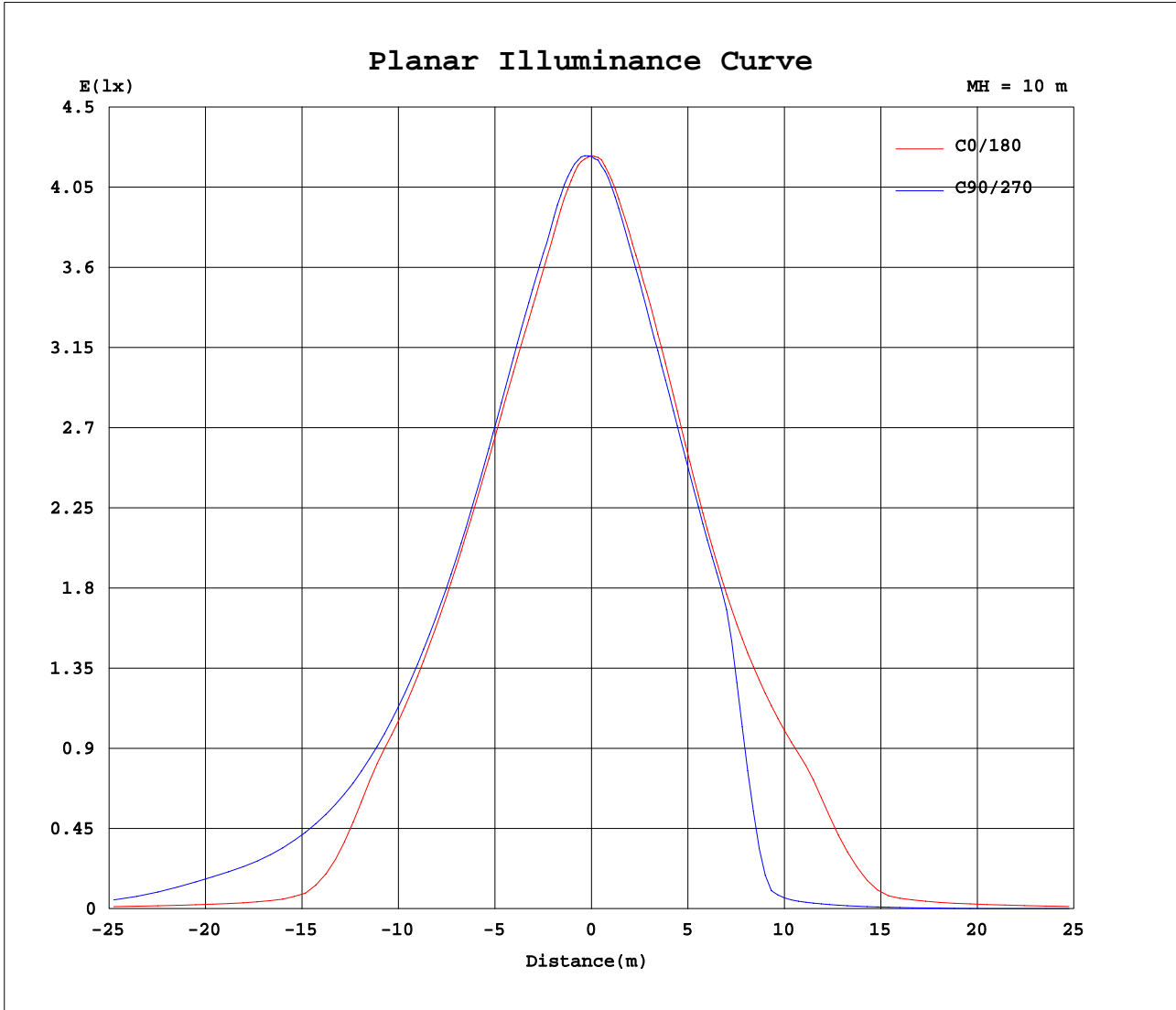
AvgL	cd/m2
L_0~180(65)av	623676
L_0~180(75)av	671019
L_0~180(85)av	665788
L_90~270(65)av	1909516
L_90~270(75)av	1235843
L_90~270(85)av	2676743
L_45(65)av	1462690
L_45(75)av	818047
L_45(85)av	1850829

Standard: GB/T 29293-2012

C Range: 0 - 360DEG  
 C Interval: 22.5DEG  
 Test Speed: HIGH  
 Temperature:25.2DEG  
 Operators:ben  
 Test Date:2017-08-07

γ Range: 0 - 180DEG  
 γ Interval: 1.0DEG  
 Test System:EVERFINE GO-R5000\_V2 SYSTEM V2.0.351  
 Humidity:45%  
 Test Distance:2.447m [K=1.0000]  
 Remarks:

Planar Illuminance Curve



C Range: 0 - 360DEG  
 C Interval: 22.5DEG  
 Test Speed: HIGH  
 Temperature: 25.2DEG  
 Operators: ben  
 Test Date: 2017-08-07

γ Range: 0 - 180DEG  
 γ Interval: 1.0DEG  
 Test System: EVERFINE GO-R5000\_V2 SYSTEM V2.0.351  
 Humidity: 45%  
 Test Distance: 2.447m [K=1.0000]  
 Remarks:

LUMINOUS DISTRIBUTION INTENSITY DATA

Test:U:120.0V I:0.0826A P:9.790W PF:0.9880 Lamp Flux:910.526x1 lm		
NAME: ASD-LSR-1050	TYPE:N/A	WEIGHT:N/A
SPEC.:N/A	DIM.: N/A	SERIAL No.:N/A
MFR.: ASD Lighting Corp	SUR.:N/A	Shielding Angle:N/A

Table--1

UNIT: cd

C(DEG) γ (DEG)	0	22.5	45	67.5	90	112.5	135	157.5	180	202.5	225	247.5	270	292.5	315	337.5			
0	422	422	422	422	422	422	422	422	422	422	422	422	422	422	422	422			
5	417	419	421	423	422	422	422	419	417	416	415	415	414	415	416	417			
10	403	405	407	411	413	413	410	406	404	401	399	398	398	398	401	403			
15	390	392	395	398	401	403	402	396	391	387	385	382	382	383	385	388			
20	381	384	385	387	392	395	393	385	378	374	372	369	367	369	372	377			
25	372	378	376	376	381	383	379	371	362	357	358	356	351	354	357	366			
30	362	369	364	364	370	372	365	352	341	338	340	339	332	336	339	350			
35	349	357	352	350	357	358	348	332	321	314	318	315	305	314	319	331			
40	329	339	337	334	342	342	329	310	302	290	248	156	122	166	264	308			
45	298	309	316	315	321	318	309	290	283	211	60.5	21.6	17.2	21.5	69.8	228			
50	226	275	291	291	291	284	283	270	234	55.1	18.8	12.6	10.3	11.9	17.9	53.3			
55	70.3	235	256	257	253	244	249	237	84.4	24.4	13.8	8.48	6.48	7.85	12.9	22.3			
60	31.1	114	204	217	214	208	199	114	33.5	19.6	9.98	5.23	3.45	4.60	9.13	17.7			
65	25.4	42.1	110	167	161	153	125	43.0	27.3	15.5	6.32	1.62	0.24	1.43	5.58	13.8			
70	21.0	34.6	57.2	73.1	75.0	68.9	52.4	35.7	23.7	11.1	1.90	0.01	0.01	0.01	1.49	9.63			
75	16.6	30.4	42.4	53.2	64.0	54.7	42.2	30.8	18.1	5.73	0.01	0.01	0.02	0.01	0.01	4.83			
80	11.0	24.8	37.0	46.0	53.1	46.7	37.1	25.7	12.6	0.28	0.01	0.02	0.02	0.02	0.01	0.01			
85	4.98	19.1	32.1	41.0	46.6	41.7	32.4	20.0	6.62	0.01	0.02	0.03	0.03	0.03	0.02	0.01			
90	0.01	12.5	25.4	35.0	39.8	35.4	25.8	13.4	0.24	0.01	0.03	0.04	0.04	0.04	0.03	0.02			
95	0.02	5.28	17.9	27.0	31.4	27.4	18.2	6.20	0.01	0.02	0.04	0.05	0.05	0.05	0.04	0.02			
100	0.02	0.02	9.92	18.4	22.3	18.6	10.4	0.05	0.01	0.03	0.05	0.06	0.07	0.07	0.05	0.04			
105	0.04	0.01	2.32	9.87	13.3	10.2	3.02	0.02	0.02	0.05	0.06	0.08	0.09	0.08	0.07	0.05			
110	0.06	0.02	0.01	0.21	0.01	0.12	0.01	0.03	0.04	0.06	0.08	0.10	0.10	0.10	0.09	0.07			
115	0.08	0.04	0.02	0.01	0.01	0.01	0.02	0.05	0.05	0.07	0.10	0.12	0.13	0.12	0.11	0.09			
120	0.10	0.07	0.04	0.03	0.03	0.03	0.05	0.07	0.07	0.09	0.12	0.14	0.15	0.15	0.13	0.11			
125	0.13	0.10	0.08	0.06	0.06	0.06	0.08	0.11	0.09	0.12	0.15	0.17	0.18	0.18	0.16	0.13			
130	0.17	0.14	0.12	0.11	0.10	0.11	0.12	0.15	0.11	0.14	0.18	0.20	0.21	0.21	0.19	0.16			
135	0.21	0.19	0.17	0.16	0.16	0.16	0.18	0.21	0.15	0.18	0.22	0.24	0.24	0.24	0.23	0.21			
140	0.28	0.26	0.24	0.24	0.23	0.24	0.26	0.28	0.19	0.22	0.26	0.28	0.28	0.28	0.27	0.25			
145	0.37	0.35	0.34	0.33	0.33	0.34	0.36	0.39	0.23	0.26	0.28	0.30	0.30	0.31	0.30	0.29			
150	0.47	0.45	0.43	0.43	0.44	0.45	0.47	0.49	0.27	0.28	0.30	0.32	0.32	0.33	0.33	0.32			
155	0.54	0.53	0.52	0.52	0.53	0.54	0.56	0.58	0.32	0.32	0.34	0.35	0.36	0.36	0.36	0.36			
160	0.60	0.60	0.59	0.60	0.61	0.62	0.64	0.65	0.34	0.35	0.35	0.36	0.37	0.38	0.38	0.38			
165	0.61	0.61	0.61	0.62	0.63	0.64	0.64	0.65	0.36	0.36	0.36	0.37	0.39	0.40	0.40	0.40			
170	0.58	0.58	0.58	0.59	0.60	0.61	0.61	0.61	0.38	0.38	0.38	0.39	0.40	0.40	0.41	0.41			
175	0.55	0.55	0.56	0.57	0.58	0.58	0.59	0.59	0.42	0.42	0.42	0.43	0.44	0.45	0.45	0.45			
180	0.50	0.50	0.50	0.51	0.51	0.52	0.52	0.52	0.50	0.50	0.50	0.51	0.51	0.52	0.52	0.52			

C Range: 0 - 360DEG  
 C Interval: 22.5DEG  
 Test Speed: HIGH  
 Temperature:25.2DEG  
 Operators:ben  
 Test Date:2017-08-07

γ Range: 0 - 180DEG  
 γ Interval: 1.0DEG  
 Test System:EVERFINE GO-R5000\_V2 SYSTEM V2.0.351  
 Humidity:45%  
 Test Distance:2.447m [K=1.0000]  
 Remarks: