



# LED FLUSHMOUNT DOUBLE RING

► **DESIGN & OPTIONS** - LED FLUSHMOUNT DOUBLE RING has a modern, multipurpose design and a stylish look with efficient lighting. It is designed to operate on 120-277V circuits. You can choose either a 3000K, 4000K or 5000K color temperature. The 120° beam angle grants you smooth and even lighting. This fixture comes in three sizes: 12", 14" and 16" with a BRUSHED NICKEL finish.

► **INSTALLATION** - Installation is quick and easy: just attach the mounting bracket to the outlet box, connect the wires and fix the lamp body on the mounting bracket. Screws, wire nuts and all installation accessories are provided. Refer to install instructions for detailed steps.

► **APPLICATION** - The LED FLUSHMOUNT DOUBLE RING provides bright, yet smooth lighting for your family room, bedroom, hallway, corridor, or any other common area in your living space. It can be used as an additional light to an already existing ceiling light as well. This fixture is also Damp location rated.

► **ENERGY SAVING & EFFICIENCY** - Replacing an incandescent fixture with LED FLUSHMOUNT DOUBLE RING can save you 8 times as much on your current energy costs. With a lifespan of 50,000 hours, these fixtures are made to last decades with normal operation! This fixture will save you a significant amount of money in its lifetime.

► **CERTIFICATION & WARRANTY** - Buy with confidence: ASD provides a 5-year warranty along with ETL and ENERGY STAR certifications to guarantee top quality products and safety!

Top US certifications allow participation in rebates; please check the rebate programs available in your state.

Catalog number	
Notes	
Type	



## PRODUCT LEGEND:

Family	Voltage	Size	Dimmable	Watts	CCT	Finish
ASD-LFMDR	MV	XX	N	XX	XX	XX
LED Flushmount Double Ring	120-277 V	12 = 12 inch 14 = 14 inch 16 = 16 inch	Non-dimmable	20 = 20 W 21 = 21 W 24 = 24 W	30 = 3,000 K 40 = 4,000 K 50 = 5,000 K	NK = Brushed Nickel

## LED FLUSHMOUNT DOUBLE RING:

Model	Size	Watts	Dimming	CCT	Lumens	Dimensions (LxWxH)
ASD-LFMDR-MV-12N2030-NK	12 inch	20 W	No	3,000 K	1,400 lm	12" x 12" x 3 1/8"
ASD-LFMDR-MV-12N2040-NK	12 inch	20 W	No	4,000 K	1,400 lm	12" x 12" x 3 1/8"
ASD-LFMDR-MV-12N2050-NK	12 inch	20 W	No	5,000 K	1,400 lm	12" x 12" x 3 1/8"
ASD-LFMDR-MV-14N2130-NK	14 inch	21 W	No	3,000 K	1,500 lm	14" x 14" x 3 1/2"
ASD-LFMDR-MV-14N2140-NK	14 inch	21 W	No	4,000 K	1,500 lm	14" x 14" x 3 1/2"
ASD-LFMDR-MV-14N2150-NK	14 inch	21 W	No	5,000 K	1,500 lm	14" x 14" x 3 1/2"
ASD-LFMDR-MV-16N2430-NK	16 inch	24 W	No	3,000 K	1,700 lm	15 3/4" x 15 3/4" x 3 3/4"
ASD-LFMDR-MV-16N2440-NK	16 inch	24 W	No	4,000 K	1,700 lm	15 3/4" x 15 3/4" x 3 3/4"
ASD-LFMDR-MV-16N2450-NK	16 inch	24 W	No	5,000 K	1,700 lm	15 3/4" x 15 3/4" x 3 3/4"

## ORDERING INFORMATION:

Model	UPC	Pcs. per Carton	Carton Size	Carton Weight	GTIN-14
ASD-LFMDR-MV-12N2030-NK	819201027651	4	15.55" x 13.19" x 13.39"	11.2 lb	10819201027658
ASD-LFMDR-MV-12N2040-NK	819201027668	4	15.55" x 13.19" x 13.39"	11.2 lb	10819201027665
ASD-LFMDR-MV-12N2050-NK	819201027675	4	15.55" x 13.19" x 13.39"	11.2 lb	10819201027672
ASD-LFMDR-MV-14N2130-NK	819201027682	4	15.94" x 15.75" x 15.94"	15.3 lb	10819201027689
ASD-LFMDR-MV-14N2140-NK	819201027699	4	15.94" x 15.75" x 15.94"	15.3 lb	10819201027696
ASD-LFMDR-MV-14N2150-NK	819201027705	4	15.94" x 15.75" x 15.94"	15.3 lb	10819201027702
ASD-LFMDR-MV-16N2430-NK	819201027712	4	17.52" x 16.54" x 17.72"	19.7 lb	10819201027719
ASD-LFMDR-MV-16N2440-NK	819201027729	4	17.52" x 16.54" x 17.72"	19.7 lb	10819201027726
ASD-LFMDR-MV-16N2450-NK	819201027736	4	17.52" x 16.54" x 17.72"	19.7 lb	10819201027733

For most up-to-date spec sheets please refer to [asd-lighting.com](http://asd-lighting.com)



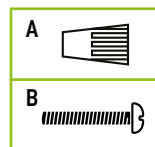
# LED FLUSHMOUNT DOUBLE RING

## PRODUCT SPECIFICATIONS:

Construction & Materials			
Lens	White Acrylic		
Housing	Steel		
Finish Color	Brushed Nickel		
Weight	ASD-LFMDR-MV-12N2030-NK ASD-LFMDR-MV-12N2040-NK ASD-LFMDR-MV-12N2050-NK	1.6 lb (0.7 kg)	
	ASD-LFMDR-MV-14N2130-NK ASD-LFMDR-MV-14N2140-NK	2.2 lb (1 kg)	
	ASD-LFMDR-MV-14N2150-NK ASD-LFMDR-MV-16N2430-NK ASD-LFMDR-MV-16N2440-NK ASD-LFMDR-MV-16N2450-NK	3 lb (1.4 kg)	
	Environmental System		
	Work Environment	Suitable for Damp Locations, IP22	
	Operating Temperature	-4°F to 122°F / -20°C to 50°C	
	L70 life	> 50,000 hrs	
Optical System			
Luminous Flux	ASD-LFMDR-MV-12N2030-NK	1,400 lm	
	ASD-LFMDR-MV-12N2040-NK	1,400 lm	
	ASD-LFMDR-MV-12N2050-NK	1,400 lm	
	ASD-LFMDR-MV-14N2130-NK	1,500 lm	
	ASD-LFMDR-MV-14N2140-NK	1,500 lm	
	ASD-LFMDR-MV-14N2150-NK	1,500 lm	
	ASD-LFMDR-MV-16N2430-NK	1,700 lm	
	ASD-LFMDR-MV-16N2440-NK	1,700 lm	
	ASD-LFMDR-MV-16N2450-NK	1,700 lm	
Color Temperature	3,000 K; 4,000 K; 5,000 K		
CRI	> 80		
Electrical System			
Input Voltage	120-277VAC 50/60 Hz		
Max input current	0.35 A		
Inrush current (Action time)	ASD-LFMDR-MV-12N2030-NK ASD-LFMDR-MV-12N2040-NK ASD-LFMDR-MV-12N2050-NK	0.17 A (0.5 S)	
	ASD-LFMDR-MV-14N2130-NK ASD-LFMDR-MV-14N2140-NK	0.17 A (0.5 S)	
	ASD-LFMDR-MV-14N2150-NK ASD-LFMDR-MV-16N2430-NK ASD-LFMDR-MV-16N2440-NK ASD-LFMDR-MV-16N2450-NK	0.195 A (0.5 S)	
	AC input range	min 100 V max 277 V	
	Off State Power	0 W	
	Power Consumption	ASD-LFMDR-MV-12N2030-NK ASD-LFMDR-MV-12N2040-NK ASD-LFMDR-MV-12N2050-NK	20 W
		ASD-LFMDR-MV-14N2130-NK ASD-LFMDR-MV-14N2140-NK	21 W
ASD-LFMDR-MV-14N2150-NK ASD-LFMDR-MV-16N2430-NK ASD-LFMDR-MV-16N2440-NK ASD-LFMDR-MV-16N2450-NK		24 W	
Power Factor		> 0.9	
Output voltage		36 V	
Max output current		ASD-LFMDR-MV-12N2030-NK ASD-LFMDR-MV-12N2040-NK ASD-LFMDR-MV-12N2050-NK	520 mA
		ASD-LFMDR-MV-14N2130-NK ASD-LFMDR-MV-14N2140-NK	520 mA
	ASD-LFMDR-MV-14N2150-NK ASD-LFMDR-MV-16N2430-NK ASD-LFMDR-MV-16N2440-NK ASD-LFMDR-MV-16N2450-NK	580 mA	
	LED driver class	DC	
	Regular and Voluntary Certifications		
	5-year limited warranty	cETLus certified 4001256	Energy Star certified

## PACKAGE CONTENTS:

Description	Q-ty
LED Flushmount Double Ring	1
Wire nuts (A)	3
Screw (B)	2
Box	1
Cut sheet	2



## INSTALLATION GUIDE

### IMPORTANT SAFETY INFORMATION:

Please read all the instructions below before installation.

- ▶ Make sure that the supply voltage corresponds to the rated product voltage.
- ▶ The product must be installed by a qualified electrician in accordance with the National Electrical Code and corresponding local codes.
- ▶ If the product is damaged, do not use it.

### ⚠ WARNING

**RISK OF PERSONAL INJURY – READ and follow all WARNINGS and installation instructions.**

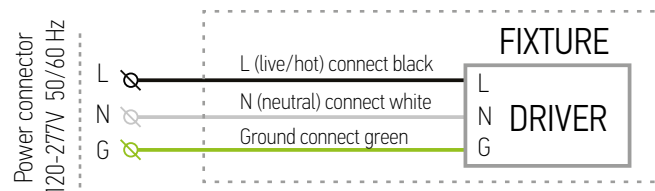
Keep or give to the owner for future reference.

**Risk of cuts:** Wear gloves to prevent cuts or abrasions when removing from carton, handling, installing, and maintaining this product.

**Risk of electric shock:** This product must be installed in accordance with the applicable installation code by a person familiar with the construction and operation of the product and the hazards involved.

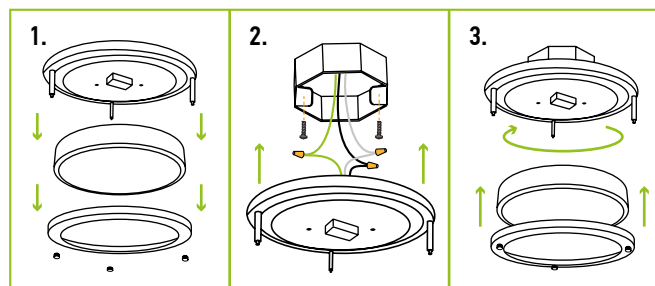
**Risk of Fire:** Minimum 194°F supply conductors. Consult a qualified electrician to ensure correct branch circuit conductor. ASD® assumes no responsibility for claims arising out of improper or careless installation or handling of this product.

### ELECTRICAL SCHEMATIC DIAGRAM:



### INSTALLATION STEPS:

1. Unscrew three cap nuts counter-clockwise, remove metal ring and the lens.
2. Attach the Crossbar to the Outlet box using screws. Connect the wires: Black to Black, White to White, Green to Green. Carefully tuck all wires back into the Outlet Box.
3. Place the fixture pan over the Crossbar and feed fixture screws through keyhole slots. Rotate the fixture pan clockwise until screws lock into the narrow end of the keyhole slots and tighten screws firmly. Secure the lens and metal ring to fixture pan using three cap nuts.



For most up-to-date spec sheets please refer to [asd-lighting.com](http://asd-lighting.com)