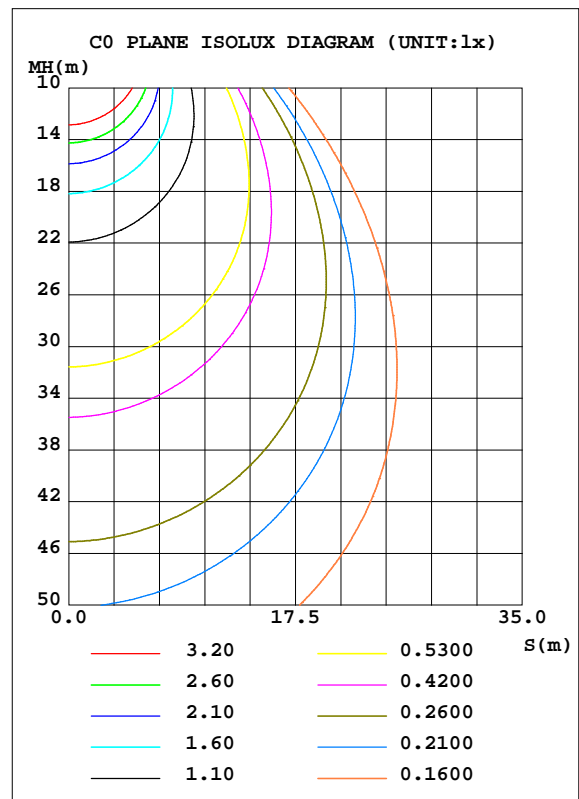
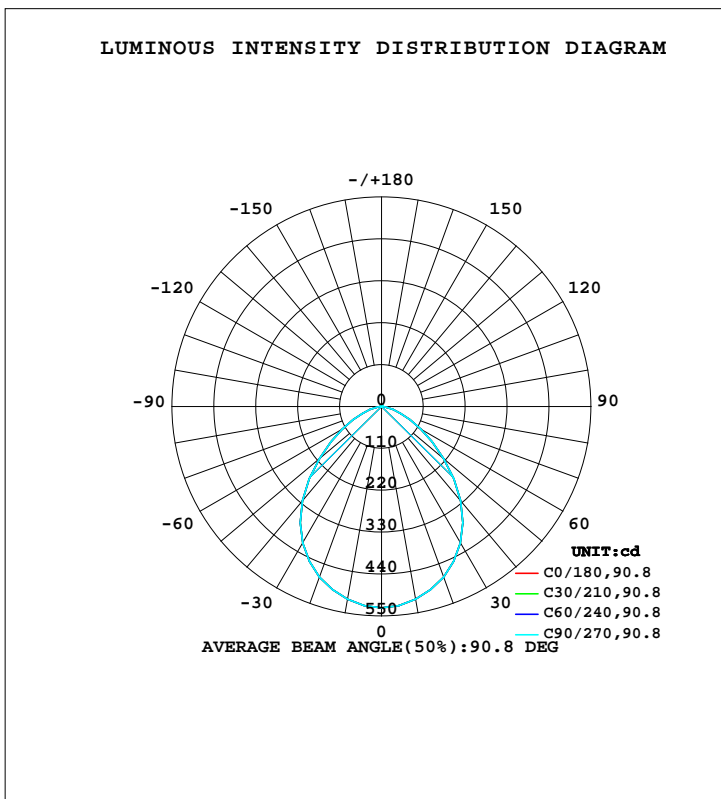


LUMINAIRE PHOTOMETRIC TEST REPORT

NAME: LED DOWNLIGHT	TYPE:	WEIGHT:
SPEC.:	DIM.:	SERIAL No.:
MFR.: ASD LIGHTING CORP	SUR.: 0.1*0.1	Shielding Angle:

DATA OF LAMP		PHOTOMETRIC DATA			
MODEL: CDL7-4DA13AC(13W 3000K)		Imax(cd)	528.7	S/MH(C0/180)	1.17
NOMINAL POWER(W)	13	LOR(%)	100.0	S/MH(C90/270)	1.17
RATED VOLTAGE(V)	100-277	TOTAL FLUX(lm)	1118.7	h UP, DN(C0-180)	0.5, 49.5
NOMINAL FLUX(lm)	1118.74	CIE CLASS	DIRECT	h UP, DN(C180-360)	0.5, 49.5
LAMPS INSIDE	1	h up(%)	1.0	CIBSE SHR NOM	1.25
TEST VOLTAGE(V)	120	h down(%)	99.0	CIBSE SHR MAX	1.30



C Range: 0 - 360DEG
 C Interval: 15.0DEG
 Test Speed: MEDIUM
 Temperature: 25.3DEG
 Operators:
 Test Date: 2020-06-15

g Range: 0 - 180DEG
 g Interval: 5.0DEG
 Test System: EVERFINE GO-2000B_V1 SYSTEM V2.00.426
 Humidity: 65.0%
 Test Distance: 8.000m [K=1.0000]
 Remarks:

ZONAL FLUX DIAGRAM

ZONAL FLUX DIAGRAM:

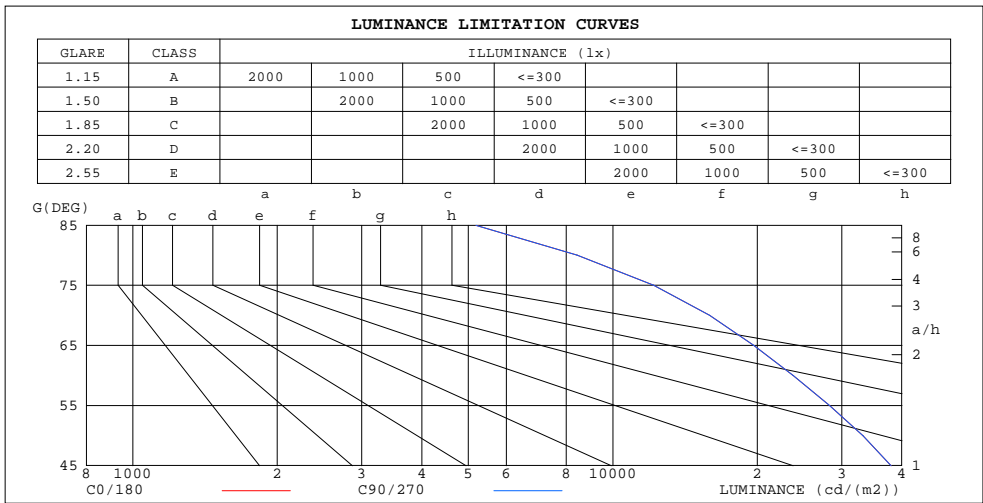
g	C0	C45	C90	C135	C180	C225	C270	C315	g	F zone	F total	%lum,lamp
10	514.0	514.0	514.0	514.0	514.0	514.0	514.0	514.0	0- 10	49.73	49.73	4.45,4.45
20	476.6	476.6	476.6	476.6	476.6	476.6	476.6	476.6	10- 20	140.4	190.1	17,17
30	414.5	414.5	414.5	414.5	414.5	414.5	414.5	414.5	20- 30	206.3	396.4	35.4,35.4
40	323.2	323.2	323.2	323.2	323.2	323.2	323.2	323.2	30- 40	231.9	628.3	56.2,56.2
50	213.5	213.5	213.5	213.5	213.5	213.5	213.5	213.5	40- 50	207.0	835.3	74.7,74.7
60	118.7	118.7	118.7	118.7	118.7	118.7	118.7	118.7	50- 60	146.6	982.0	87.8,87.8
70	54.40	54.40	54.40	54.40	54.40	54.40	54.40	54.40	60- 70	83.91	1066	95.3,95.3
80	14.63	14.63	14.63	14.63	14.63	14.63	14.63	14.63	70- 80	34.78	1101	98.4,98.4
90	0.3790	0.3790	0.3790	0.3790	0.3790	0.3790	0.3790	0.3790	80- 90	6.548	1107	99,99
100	0.7227	0.7227	0.7227	0.7227	0.7227	0.7227	0.7227	0.7227	90-100	0.5925	1108	99,99
110	1.192	1.192	1.192	1.192	1.192	1.192	1.192	1.192	100-110	1.004	1109	99.1,99.1
120	1.690	1.690	1.690	1.690	1.690	1.690	1.690	1.690	110-120	1.430	1110	99.2,99.2
130	2.231	2.231	2.231	2.231	2.231	2.231	2.231	2.231	120-130	1.761	1112	99.4,99.4
140	2.710	2.710	2.710	2.710	2.710	2.710	2.710	2.710	130-140	1.913	1114	99.6,99.6
150	3.146	3.146	3.146	3.146	3.146	3.146	3.146	3.146	140-150	1.834	1116	99.7,99.7
160	3.558	3.558	3.558	3.558	3.558	3.558	3.558	3.558	150-160	1.546	1117	99.9,99.9
170	3.908	3.908	3.908	3.908	3.908	3.908	3.908	3.908	160-170	1.056	1118	100,100
180	4.075	4.075	4.075	4.075	4.075	4.075	4.075	4.075	170-180	0.3803	1119	100,100
DEG	LUMINOUS INTENSITY:cd									UNIT:lm		

C Range: 0 - 360DEG
 C Interval: 15.0DEG
 Test Speed: MEDIUM
 Temperature:25.3DEG
 Operators:
 Test Date:2020-06-15

g Range: 0 - 180DEG
 g Interval: 5.0DEG
 Test System:EVERFINE GO-2000B_V1 SYSTEM V2.00.426
 Humidity:65.0%
 Test Distance:8.000m [K=1.0000]
 Remarks:

LUMINANCE LIMITATION CURVES

NAME: LED DOWNLIGHT	TYPE:	WEIGHT:
SPEC.:	DIM.:	SERIAL No.:
MFR.: ASD LIGHTING CORP	SUR.: 0.1*0.1	Shielding Angle:



LUMINANCE cd/(m2)		
G(DEG)	C0/180	C90/270
85	5190	5190
80	8427	8427
75	12160	12160
70	15905	15905
65	19678	19678
60	23746	23746
55	28287	28287
50	33213	33213
45	38007	38007

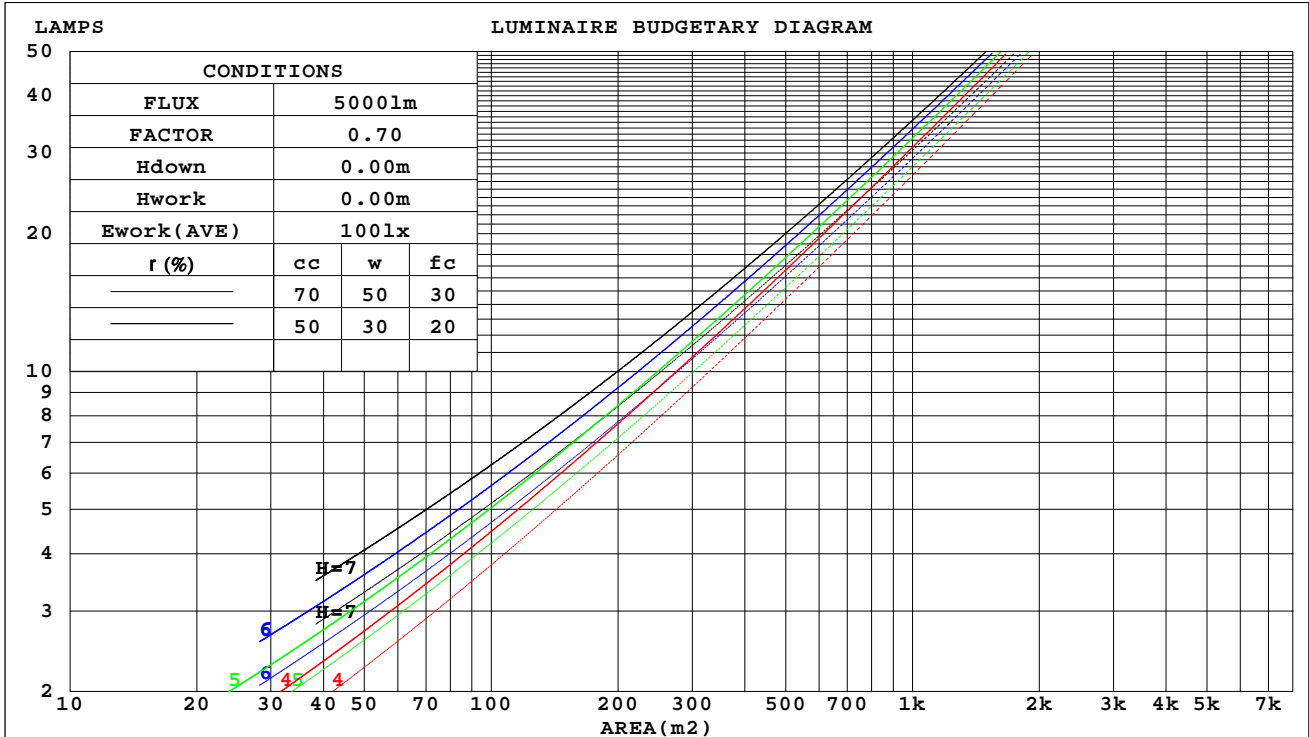
C Range: 0 - 360DEG
C Interval: 15.0DEG
Test Speed: MEDIUM
Temperature: 25.3DEG
Operators:
Test Date: 2020-06-15

g Range: 0 - 180DEG
g Interval: 5.0DEG
Test System: EVERFINE GO-2000B_V1 SYSTEM V2.00.426
Humidity: 65.0%
Test Distance: 8.000m [K=1.0000]
Remarks:

CU AND LUMINAIRE BUDGETARY ESTIMATE DIAGRAM

NAME: LED DOWNLIGHT	TYPE:	WEIGHT:
SPEC.:	DIM.:	SERIAL No.:
MFR.: ASD LIGHTING CORP	SUR.: 0.1*0.1	Shielding Angle:

r _{cc}	80%			70%			50%			30%			10%			0
r _w	50%	30%	10%	50%	30%	10%	50%	30%	10%	50%	30%	10%	50%	30%	10%	0
r _{fc}	20%			20%			20%			20%			20%			0
RCR	RCR:Room Cavity Ratio						Coefficients of Utilization(CU)									
0.0	1.19	1.19	1.19	1.16	1.16	1.16	1.11	1.11	1.11	1.06	1.06	1.06	1.01	1.01	1.01	.99
1.0	1.06	1.03	.90	1.04	1.01	.98	.90	.97	.95	.96	.94	.92	.92	.90	.89	.87
2.0	.95	.89	.84	.93	.87	.83	.89	.85	.81	.86	.82	.79	.83	.80	.77	.75
3.0	.85	.77	.72	.83	.76	.71	.80	.74	.70	.77	.72	.68	.75	.71	.67	.65
4.0	.76	.68	.62	.75	.67	.62	.72	.66	.61	.70	.64	.60	.67	.63	.59	.57
5.0	.69	.60	.54	.67	.60	.54	.65	.59	.53	.63	.57	.53	.61	.56	.52	.50
6.0	.62	.54	.48	.61	.54	.48	.59	.53	.48	.58	.52	.47	.56	.51	.47	.45
7.0	.57	.49	.43	.56	.48	.43	.54	.48	.43	.53	.47	.42	.52	.46	.42	.40
8.0	.52	.44	.39	.52	.44	.39	.50	.43	.38	.49	.43	.38	.48	.42	.38	.36
9.0	.48	.40	.35	.48	.40	.35	.46	.40	.35	.45	.39	.35	.44	.39	.35	.33
10.0	.45	.37	.32	.44	.37	.32	.43	.36	.32	.42	.36	.32	.41	.36	.32	.30



C Range: 0 - 360DEG
 C Interval: 15.0DEG
 Test Speed: MEDIUM
 Temperature: 25.3DEG
 Operators:
 Test Date: 2020-06-15

g Range: 0 - 180DEG
 g Interval: 5.0DEG
 Test System: EVERFINE GO-2000B_V1 SYSTEM V2.00.426
 Humidity: 65.0%
 Test Distance: 8.000m [K=1.0000]
 Remarks:

WEC AND CCEC

NAME: LED DOWNLIGHT	TYPE:	WEIGHT:
SPEC.:	DIM.:	SERIAL No.:
MFR.: ASD LIGHTING CORP	SUR.: 0.1*0.1	Shielding Angle:

r _{cc}	80%			70%			50%			30%			10%			0
r _w	50%	30%	10%	50%	30%	10%	50%	30%	10%	50%	30%	10%	50%	30%	10%	0
r _{fc}	20%			20%			20%			20%			20%			0
RCR	RCR:Room Cavity Ratio						Wall Exitance Coefficients(WEC)									
0.0																
1.0	.258	.147	.046	.251	.143	.045	.237	.136	.043	.224	.129	.042	.213	.123	.040	
2.0	.249	.136	.042	.243	.134	.041	.231	.128	.040	.220	.123	.039	.210	.119	.037	
3.0	.235	.125	.037	.230	.123	.037	.219	.119	.036	.210	.115	.035	.201	.111	.034	
4.0	.221	.115	.034	.216	.113	.033	.207	.110	.033	.198	.106	.032	.190	.103	.031	
5.0	.207	.105	.031	.203	.104	.030	.194	.101	.030	.187	.098	.029	.180	.096	.029	
6.0	.194	.097	.028	.190	.096	.028	.183	.094	.027	.176	.091	.027	.170	.089	.027	
7.0	.182	.090	.026	.179	.089	.025	.172	.087	.025	.166	.085	.025	.160	.083	.024	
8.0	.172	.084	.024	.169	.083	.023	.163	.081	.023	.157	.080	.023	.152	.078	.023	
9.0	.162	.078	.022	.159	.078	.022	.154	.076	.022	.149	.075	.021	.144	.073	.021	
10.0	.153	.073	.020	.151	.073	.020	.146	.071	.020	.141	.070	.020	.137	.069	.020	

r _{cc}	80%			70%			50%			30%			10%			0
r _w	50%	30%	10%	50%	30%	10%	50%	30%	10%	50%	30%	10%	50%	30%	10%	0
r _{fc}	20%			20%			20%			20%			20%			0
RCR	RCR:Room Cavity Ratio						Ceiling Cavity Exitance Coefficients(CCEC)									
0.0	.198	.198	.198	.169	.169	.169	.116	.116	.116	.066	.066	.066	.021	.021	.021	
1.0	.185	.165	.146	.158	.141	.126	.108	.097	.087	.062	.056	.051	.020	.018	.016	
2.0	.174	.140	.111	.149	.121	.096	.102	.083	.067	.059	.049	.039	.019	.016	.013	
3.0	.166	.122	.087	.142	.105	.076	.098	.073	.053	.056	.043	.031	.018	.014	.010	
4.0	.158	.108	.071	.135	.094	.061	.093	.065	.043	.054	.038	.026	.017	.012	.008	
5.0	.151	.098	.059	.129	.085	.051	.089	.059	.036	.052	.035	.021	.017	.011	.007	
6.0	.144	.089	.050	.124	.077	.044	.085	.054	.031	.049	.032	.018	.016	.010	.006	
7.0	.137	.082	.044	.118	.071	.038	.082	.050	.027	.047	.029	.016	.015	.010	.005	
8.0	.131	.076	.039	.113	.066	.034	.078	.047	.024	.046	.027	.014	.015	.009	.005	
9.0	.126	.071	.035	.108	.062	.030	.075	.044	.022	.044	.026	.013	.014	.008	.004	
10.0	.120	.067	.032	.104	.058	.028	.072	.041	.020	.042	.024	.012	.014	.008	.004	

C Range: 0 - 360DEG
 C Interval: 15.0DEG
 Test Speed: MEDIUM
 Temperature:25.3DEG
 Operators:
 Test Date:2020-06-15

g Range: 0 - 180DEG
 g Interval: 5.0DEG
 Test System:EVERFINE GO-2000B_V1 SYSTEM V2.00.426
 Humidity:65.0%
 Test Distance:8.000m [K=1.0000]
 Remarks:

UGR(Unified Glare Rating) Table

NAME: LED DOWNLIGHT		TYPE:					WEIGHT:				
SPEC.:		DIM.:					SERIAL No.:				
MFR.: ASD LIGHTING CORP		SUR.: 0.1*0.1					Shielding Angle:				
ceiling/cavity	0.7	0.7	0.5	0.5	0.3	0.7	0.7	0.5	0.5	0.3	
walls	0.5	0.3	0.5	0.3	0.3	0.5	0.3	0.5	0.3	0.3	
working plane	0.2	0.2	0.2	0.2	0.2	0.2	0.2	0.2	0.2	0.2	
Room dimensions	Viewed crosswise					Viewed endwise					
x = 2H y = 2H	23.4	24.8	23.7	25.0	25.2	23.4	24.8	23.7	25.0	25.2	
3H	24.1	25.3	24.4	25.5	25.8	24.1	25.3	24.4	25.5	25.8	
4H	24.2	25.4	24.5	25.6	25.9	24.2	25.4	24.5	25.6	25.9	
6H	24.2	25.3	24.6	25.6	25.9	24.2	25.3	24.6	25.6	25.9	
8H	24.2	25.3	24.5	25.6	25.9	24.2	25.3	24.5	25.6	25.9	
12H	24.2	25.2	24.5	25.5	25.8	24.2	25.2	24.5	25.5	25.8	
4H 2H	23.7	24.9	24.0	25.1	25.4	23.7	24.9	24.0	25.1	25.4	
3H	24.5	25.5	24.8	25.8	26.1	24.5	25.5	24.8	25.8	26.1	
4H	24.7	25.6	25.1	25.9	26.3	24.7	25.6	25.1	25.9	26.3	
6H	24.7	25.6	25.2	25.9	26.3	24.7	25.6	25.2	25.9	26.3	
8H	24.7	25.5	25.2	25.9	26.3	24.7	25.5	25.2	25.9	26.3	
12H	24.7	25.4	25.1	25.8	26.2	24.7	25.4	25.1	25.8	26.2	
8H 4H	24.7	25.4	25.1	25.8	26.2	24.7	25.4	25.1	25.8	26.2	
6H	24.8	25.4	25.3	25.9	26.3	24.8	25.4	25.3	25.9	26.3	
8H	24.8	25.4	25.3	25.8	26.3	24.8	25.4	25.3	25.8	26.3	
12H	24.8	25.3	25.3	25.7	26.2	24.8	25.3	25.3	25.7	26.2	
12H 4H	24.7	25.3	25.1	25.7	26.2	24.7	25.3	25.1	25.7	26.2	
6H	24.8	25.3	25.3	25.8	26.2	24.8	25.3	25.3	25.8	26.2	
8H	24.8	25.3	25.3	25.7	26.2	24.8	25.3	25.3	25.7	26.2	
Variations with the observer position at spacings(CIE Pub.117):											
S = 1.0H	+ 0.5 / - 0.6					+ 0.5 / - 0.6					
1.5H	+ 0.3 / - 0.3					+ 0.3 / - 0.3					
2.0H	+ 1.0 / - 1.1					+ 1.0 / - 1.1					

CIE Pub.117, 1119 lm Total Lamp Luminous Flux Correct (8log(F/F0) = 0.4)
 Area: 0.01 m2

C Range: 0 - 360DEG
 C Interval: 15.0DEG
 Test Speed: MEDIUM
 Temperature:25.3DEG
 Operators:
 Test Date:2020-06-15

g Range: 0 - 180DEG
 g Interval: 5.0DEG
 Test System:EVERFINE GO-2000B_V1 SYSTEM V2.00.426
 Humidity:65.0%
 Test Distance:8.000m [K=1.0000]
 Remarks:

UTILIZATION FACTORS TABLE

NAME: LED DOWNLIGHT	TYPE:	WEIGHT:
SPEC.:	DIM.:	SERIAL No.:
MFR.: ASD LIGHTING CORP	SUR.: 0.1*0.1	Shielding Angle:

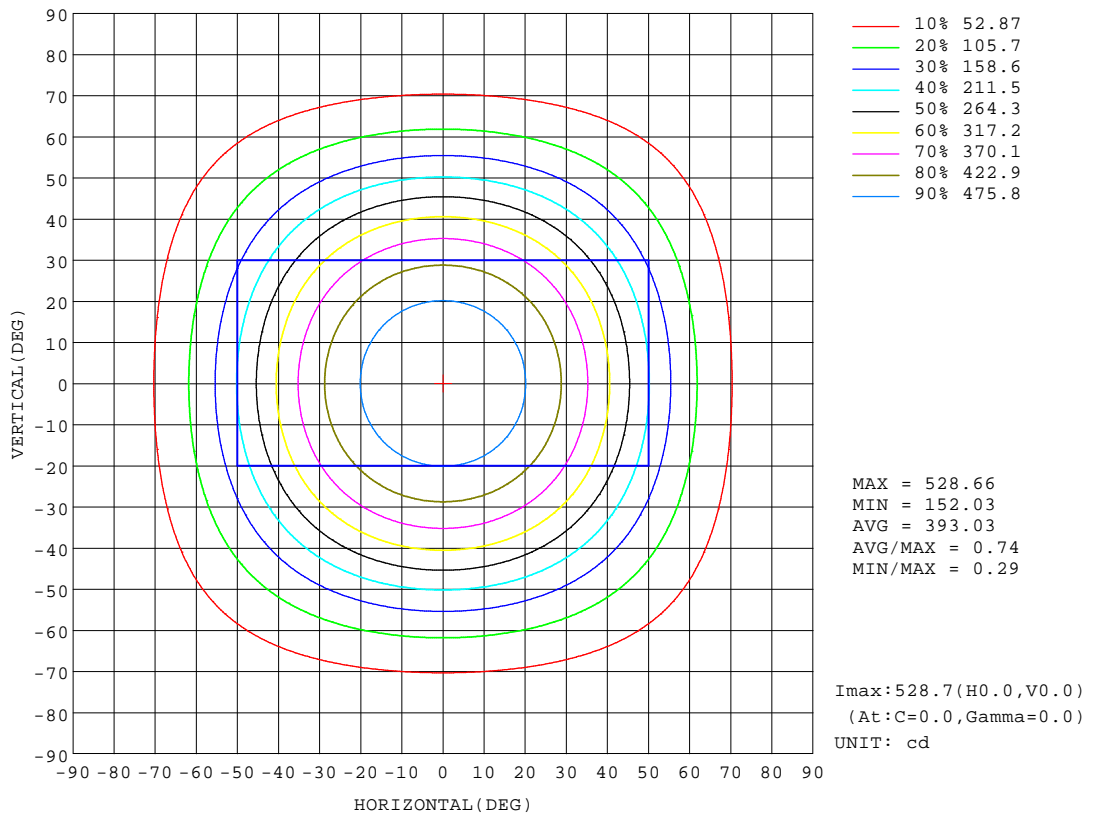
REFLECTANCE										
Ceiling	0.8	0.8	0.8	0.7	0.7	0.7	0.5	0.5	0.5	0
Walls	0.7	0.5	0.3	0.7	0.5	0.3	0.7	0.5	0.3	0
Working plane	0.2	0.2	0.2	0.2	0.2	0.2	0.2	0.2	0.2	0
ROOM INDEX	UTILIZATION FACTORS(PERCENT) $k(RI) \times RCR = 5$									
k = 0.60	64	54	47	63	53	47	62	53	47	41
0.80	74	64	57	73	63	57	71	63	57	51
1.00	82	73	66	81	72	66	79	73	65	59
1.25	89	80	74	87	79	73	85	78	73	66
1.50	93	85	79	92	84	79	89	82	77	71
2.00	99	92	87	97	91	86	94	89	84	77
2.50	102	96	91	100	95	90	97	92	88	80
3.00	105	100	95	103	98	94	99	95	92	84
4.00	109	104	100	106	102	99	102	99	96	87
5.00	110	106	103	108	104	101	104	101	98	89
ROOM INDEX	UF(total)									Direct
According to DIN EN 13032-2 2004			Suspended				SHRNOM = 1.25			

C Range: 0 - 360DEG
 C Interval: 15.0DEG
 Test Speed: MEDIUM
 Temperature: 25.3DEG
 Operators:
 Test Date: 2020-06-15

g Range: 0 - 180DEG
 g Interval: 5.0DEG
 Test System: EVERFINE GO-2000B_V1 SYSTEM V2.00.426
 Humidity: 65.0%
 Test Distance: 8.000m [K=1.0000]
 Remarks:

ISOCANDELA DIAGRAM

NAME: LED DOWNLIGHT	TYPE:	WEIGHT:
SPEC.:	DIM.:	SERIAL No.:
MFR.: ASD LIGHTING CORP	SUR.: 0.1*0.1	Shielding Angle:



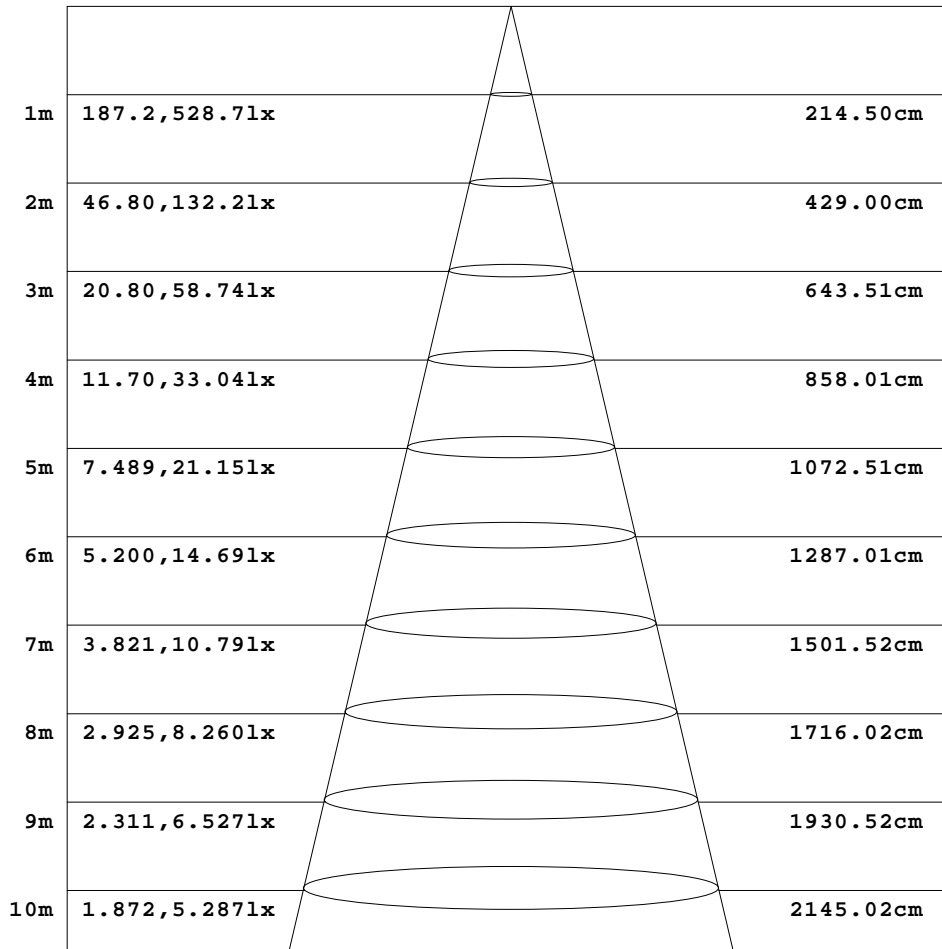
C Range: 0 - 360DEG
 C Interval: 15.0DEG
 Test Speed: MEDIUM
 Temperature: 25.3DEG
 Operators:
 Test Date: 2020-06-15

g Range: 0 - 180DEG
 g Interval: 5.0DEG
 Test System: EVERFINE GO-2000B_V1 SYSTEM V2.00.426
 Humidity: 65.0%
 Test Distance: 8.000m [K=1.0000]
 Remarks:

AAI Figure

NAME: LED DOWNLIGHT	TYPE:	WEIGHT:
SPEC.:	DIM.:	SERIAL No.:
MFR.: ASD LIGHTING CORP	SUR.: 0.1*0.1	Shielding Angle:

Flux out:835.3 lm



Height Eavg, Emax Angle:94.01deg Diameter

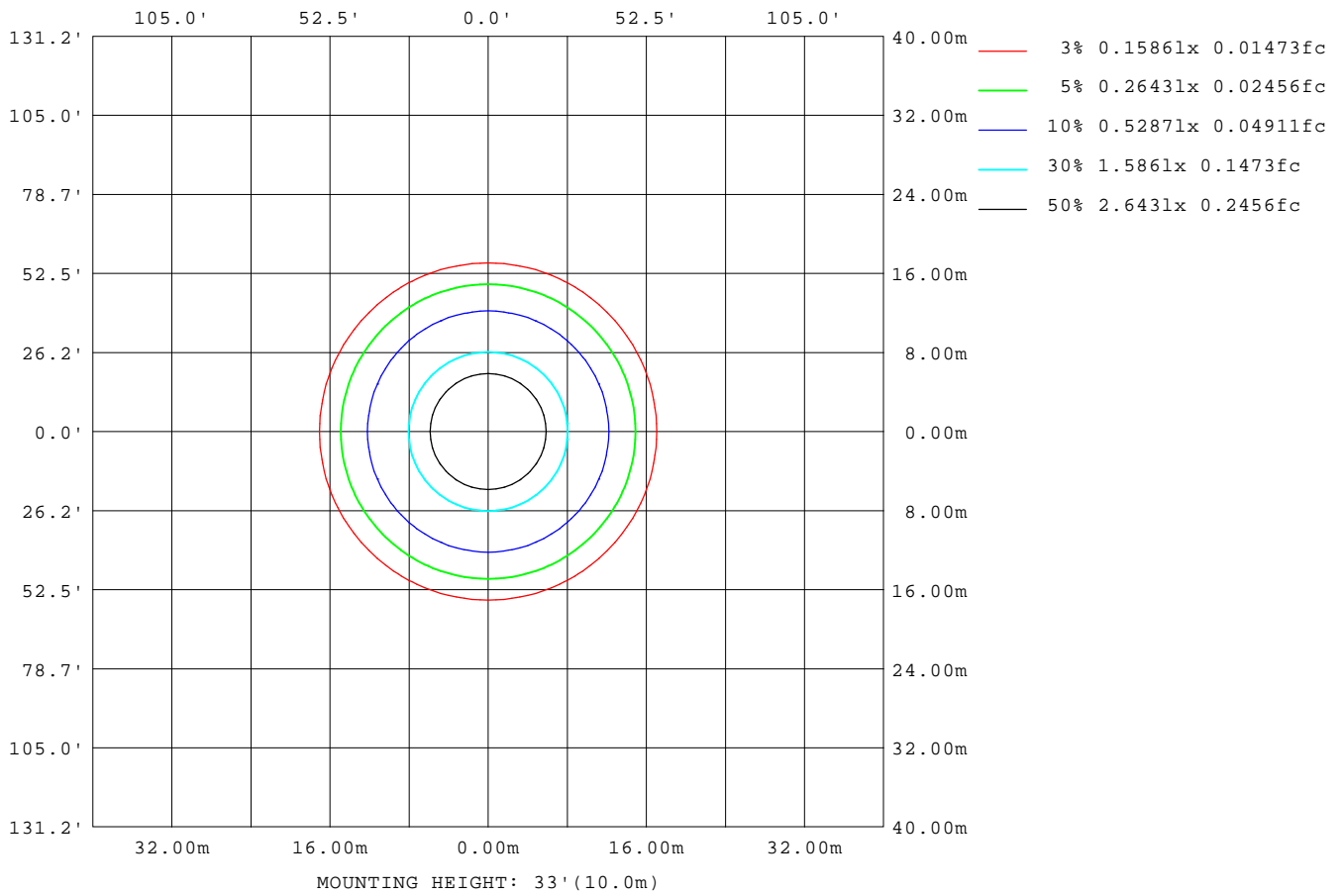
Note:The Curves indicate the illuminated area and the average illumination when the luminaire is at different distance.

C Range: 0 - 360DEG
 C Interval: 15.0DEG
 Test Speed: MEDIUM
 Temperature:25.3DEG
 Operators:
 Test Date:2020-06-15

g Range: 0 - 180DEG
 g Interval: 5.0DEG
 Test System:EVERFINE GO-2000B_V1 SYSTEM V2.00.426
 Humidity:65.0%
 Test Distance:8.000m [K=1.0000]
 Remarks:

ISOLUX DIAGRAM

NAME: LED DOWNLIGHT	TYPE:	WEIGHT:
SPEC.:	DIM.:	SERIAL No.:
MFR.: ASD LIGHTING CORP	SUR.: 0.1*0.1	Shielding Angle:



C Range: 0 - 360DEG
 C Interval: 15.0DEG
 Test Speed: MEDIUM
 Temperature: 25.3DEG
 Operators:
 Test Date: 2020-06-15

g Range: 0 - 180DEG
 g Interval: 5.0DEG
 Test System: EVERFINE GO-2000B_V1 SYSTEM V2.00.426
 Humidity: 65.0%
 Test Distance: 8.000m [K=1.0000]
 Remarks:

LED Avg.L Report

NAME: LED DOWNLIGHT	TYPE:	WEIGHT:
SPEC.:	DIM.:	SERIAL No.:
MFR.: ASD LIGHTING CORP	SUR.: 0.1*0.1	Shielding Angle:

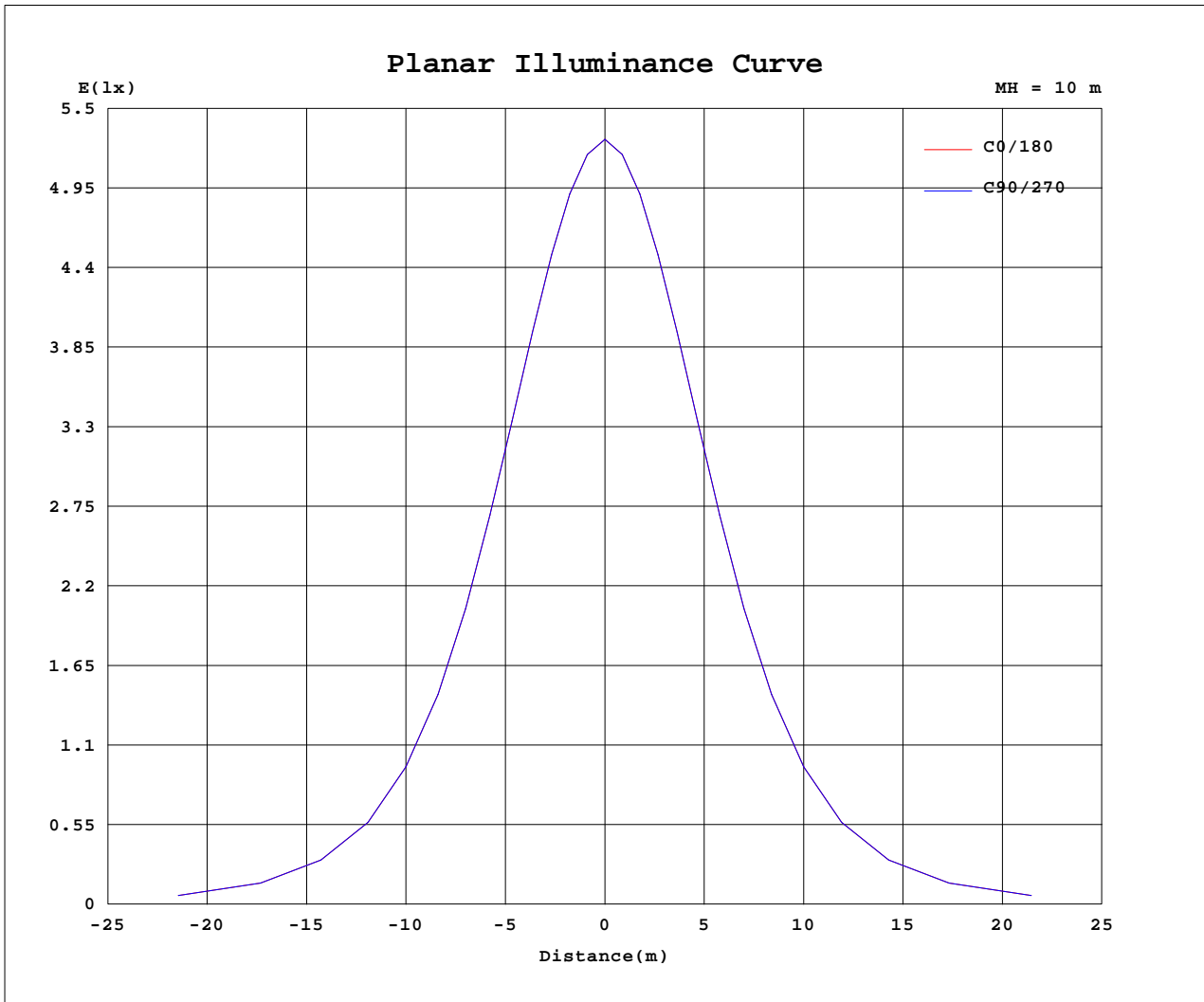
AvgL	cd/m2
L_0~180(65)av	19678
L_0~180(75)av	12160
L_0~180(85)av	5190
L_90~270(65)av	19678
L_90~270(75)av	12160
L_90~270(85)av	5190
L_45(65)av	19678
L_45(75)av	12160
L_45(85)av	5190

Standard: GB/T 29293-2012

C Range: 0 - 360DEG
 C Interval: 15.0DEG
 Test Speed: MEDIUM
 Temperature: 25.3DEG
 Operators:
 Test Date: 2020-06-15

g Range: 0 - 180DEG
 g Interval: 5.0DEG
 Test System: EVERFINE GO-2000B_V1 SYSTEM V2.00.426
 Humidity: 65.0%
 Test Distance: 8.000m [K=1.0000]
 Remarks:

Planar Illuminance Curve



C Range: 0 - 360DEG
 C Interval: 15.0DEG
 Test Speed: MEDIUM
 Temperature: 25.3DEG
 Operators:
 Test Date: 2020-06-15

g Range: 0 - 180DEG
 g Interval: 5.0DEG
 Test System: EVERFINE GO-2000B_V1 SYSTEM V2.00.426
 Humidity: 65.0%
 Test Distance: 8.000m [K=1.0000]
 Remarks:

LUMINOUS DISTRIBUTION INTENSITY DATA

NAME: LED DOWNLIGHT	TYPE:	WEIGHT:
SPEC.:	DIM.:	SERIAL No.:
MFR.: ASD LIGHTING CORP	SUR.: 0.1*0.1	Shielding Angle:

Table--1

UNIT: cd

C(DEG) g (DEG)	0	15	30	45	60	75	90	105	120	135	150	165	180	195	210	225	240	255	270
0	529	529	529	529	529	529	529	529	529	529	529	529	529	529	529	529	529	529	529
5	524	524	524	524	524	524	524	524	524	524	524	524	524	524	524	524	524	524	524
10	514	514	514	514	514	514	514	514	514	514	514	514	514	514	514	514	514	514	514
15	498	498	498	498	498	498	498	498	498	498	498	498	498	498	498	498	498	498	498
20	477	477	477	477	477	477	477	477	477	477	477	477	477	477	477	477	477	477	477
25	449	449	449	449	449	449	449	449	449	449	449	449	449	449	449	449	449	449	449
30	414	414	414	414	414	414	414	414	414	414	414	414	414	414	414	414	414	414	414
35	372	372	372	372	372	372	372	372	372	372	372	372	372	372	372	372	372	372	372
40	323	323	323	323	323	323	323	323	323	323	323	323	323	323	323	323	323	323	323
45	269	269	269	269	269	269	269	269	269	269	269	269	269	269	269	269	269	269	269
50	213	213	213	213	213	213	213	213	213	213	213	213	213	213	213	213	213	213	213
55	162	162	162	162	162	162	162	162	162	162	162	162	162	162	162	162	162	162	162
60	119	119	119	119	119	119	119	119	119	119	119	119	119	119	119	119	119	119	119
65	83.2	83.2	83.2	83.2	83.2	83.2	83.2	83.2	83.2	83.2	83.2	83.2	83.2	83.2	83.2	83.2	83.2	83.2	83.2
70	54.4	54.4	54.4	54.4	54.4	54.4	54.4	54.4	54.4	54.4	54.4	54.4	54.4	54.4	54.4	54.4	54.4	54.4	54.4
75	31.5	31.5	31.5	31.5	31.5	31.5	31.5	31.5	31.5	31.5	31.5	31.5	31.5	31.5	31.5	31.5	31.5	31.5	31.5
80	14.6	14.6	14.6	14.6	14.6	14.6	14.6	14.6	14.6	14.6	14.6	14.6	14.6	14.6	14.6	14.6	14.6	14.6	14.6
85	4.52	4.52	4.52	4.52	4.52	4.52	4.52	4.52	4.52	4.52	4.52	4.52	4.52	4.52	4.52	4.52	4.52	4.52	4.52
90	0.38	0.38	0.38	0.38	0.38	0.38	0.38	0.38	0.38	0.38	0.38	0.38	0.38	0.38	0.38	0.38	0.38	0.38	0.38
95	0.54	0.54	0.54	0.54	0.54	0.54	0.54	0.54	0.54	0.54	0.54	0.54	0.54	0.54	0.54	0.54	0.54	0.54	0.54
100	0.72	0.72	0.72	0.72	0.72	0.72	0.72	0.72	0.72	0.72	0.72	0.72	0.72	0.72	0.72	0.72	0.72	0.72	0.72
105	0.94	0.94	0.94	0.94	0.94	0.94	0.94	0.94	0.94	0.94	0.94	0.94	0.94	0.94	0.94	0.94	0.94	0.94	0.94
110	1.19	1.19	1.19	1.19	1.19	1.19	1.19	1.19	1.19	1.19	1.19	1.19	1.19	1.19	1.19	1.19	1.19	1.19	1.19
115	1.45	1.45	1.45	1.45	1.45	1.45	1.45	1.45	1.45	1.45	1.45	1.45	1.45	1.45	1.45	1.45	1.45	1.45	1.45
120	1.69	1.69	1.69	1.69	1.69	1.69	1.69	1.69	1.69	1.69	1.69	1.69	1.69	1.69	1.69	1.69	1.69	1.69	1.69
125	1.97	1.97	1.97	1.97	1.97	1.97	1.97	1.97	1.97	1.97	1.97	1.97	1.97	1.97	1.97	1.97	1.97	1.97	1.97
130	2.23	2.23	2.23	2.23	2.23	2.23	2.23	2.23	2.23	2.23	2.23	2.23	2.23	2.23	2.23	2.23	2.23	2.23	2.23
135	2.48	2.48	2.48	2.48	2.48	2.48	2.48	2.48	2.48	2.48	2.48	2.48	2.48	2.48	2.48	2.48	2.48	2.48	2.48
140	2.71	2.71	2.71	2.71	2.71	2.71	2.71	2.71	2.71	2.71	2.71	2.71	2.71	2.71	2.71	2.71	2.71	2.71	2.71
145	2.93	2.93	2.93	2.93	2.93	2.93	2.93	2.93	2.93	2.93	2.93	2.93	2.93	2.93	2.93	2.93	2.93	2.93	2.93
150	3.15	3.15	3.15	3.15	3.15	3.15	3.15	3.15	3.15	3.15	3.15	3.15	3.15	3.15	3.15	3.15	3.15	3.15	3.15
155	3.35	3.35	3.35	3.35	3.35	3.35	3.35	3.35	3.35	3.35	3.35	3.35	3.35	3.35	3.35	3.35	3.35	3.35	3.35
160	3.56	3.56	3.56	3.56	3.56	3.56	3.56	3.56	3.56	3.56	3.56	3.56	3.56	3.56	3.56	3.56	3.56	3.56	3.56
165	3.74	3.74	3.74	3.74	3.74	3.74	3.74	3.74	3.74	3.74	3.74	3.74	3.74	3.74	3.74	3.74	3.74	3.74	3.74
170	3.91	3.91	3.91	3.91	3.91	3.91	3.91	3.91	3.91	3.91	3.91	3.91	3.91	3.91	3.91	3.91	3.91	3.91	3.91
175	4.02	4.02	4.02	4.02	4.02	4.02	4.02	4.02	4.02	4.02	4.02	4.02	4.02	4.02	4.02	4.02	4.02	4.02	4.02
180	4.08	4.08	4.08	4.08	4.08	4.08	4.08	4.08	4.08	4.08	4.08	4.08	4.08	4.08	4.08	4.08	4.08	4.08	4.08

C Range: 0 - 360DEG
 C Interval: 15.0DEG
 Test Speed: MEDIUM
 Temperature: 25.3DEG
 Operators:
 Test Date: 2020-06-15

g Range: 0 - 180DEG
 g Interval: 5.0DEG
 Test System: EVERFINE GO-2000B_V1 SYSTEM V2.00.426
 Humidity: 65.0%
 Test Distance: 8.000m [K=1.0000]
 Remarks:

LUMINOUS DISTRIBUTION INTENSITY DATA

NAME: LED DOWNLIGHT	TYPE:	WEIGHT:
SPEC.:	DIM.:	SERIAL No.:
MFR.: ASD LIGHTING CORP	SUR.: 0.1*0.1	Shielding Angle:

Table--2

UNIT: cd

C(DEG) g (DEG)	285	300	315	330	345														
0	529	529	529	529	529														
5	524	524	524	524	524														
10	514	514	514	514	514														
15	498	498	498	498	498														
20	477	477	477	477	477														
25	449	449	449	449	449														
30	414	414	414	414	414														
35	372	372	372	372	372														
40	323	323	323	323	323														
45	269	269	269	269	269														
50	213	213	213	213	213														
55	162	162	162	162	162														
60	119	119	119	119	119														
65	83.2	83.2	83.2	83.2	83.2														
70	54.4	54.4	54.4	54.4	54.4														
75	31.5	31.5	31.5	31.5	31.5														
80	14.6	14.6	14.6	14.6	14.6														
85	4.52	4.52	4.52	4.52	4.52														
90	0.38	0.38	0.38	0.38	0.38														
95	0.54	0.54	0.54	0.54	0.54														
100	0.72	0.72	0.72	0.72	0.72														
105	0.94	0.94	0.94	0.94	0.94														
110	1.19	1.19	1.19	1.19	1.19														
115	1.45	1.45	1.45	1.45	1.45														
120	1.69	1.69	1.69	1.69	1.69														
125	1.97	1.97	1.97	1.97	1.97														
130	2.23	2.23	2.23	2.23	2.23														
135	2.48	2.48	2.48	2.48	2.48														
140	2.71	2.71	2.71	2.71	2.71														
145	2.93	2.93	2.93	2.93	2.93														
150	3.15	3.15	3.15	3.15	3.15														
155	3.35	3.35	3.35	3.35	3.35														
160	3.56	3.56	3.56	3.56	3.56														
165	3.74	3.74	3.74	3.74	3.74														
170	3.91	3.91	3.91	3.91	3.91														
175	4.02	4.02	4.02	4.02	4.02														
180	4.08	4.08	4.08	4.08	4.08														

C Range: 0 - 360DEG
 C Interval: 15.0DEG
 Test Speed: MEDIUM
 Temperature:25.3DEG
 Operators:
 Test Date:2020-06-15

g Range: 0 - 180DEG
 g Interval: 5.0DEG
 Test System:EVERFINE GO-2000B_V1 SYSTEM V2.00.426
 Humidity:65.0%
 Test Distance:8.000m [K=1.0000]
 Remarks: