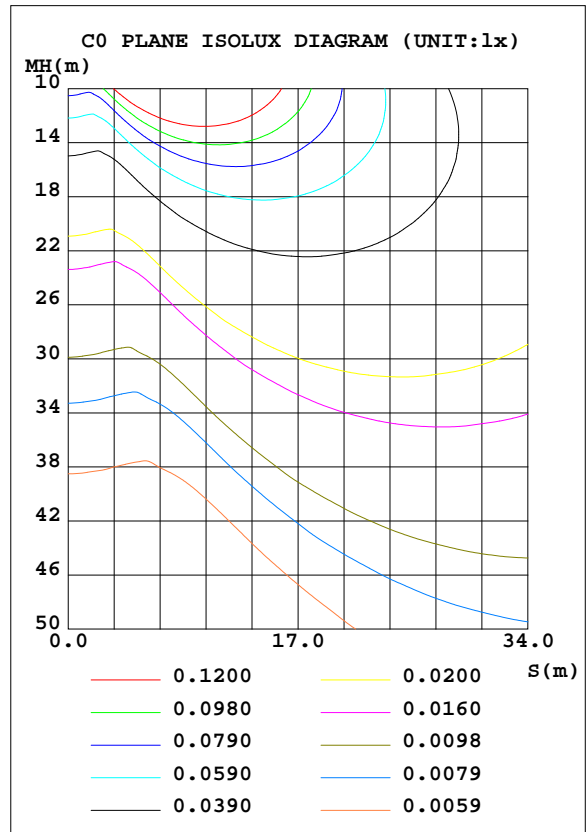
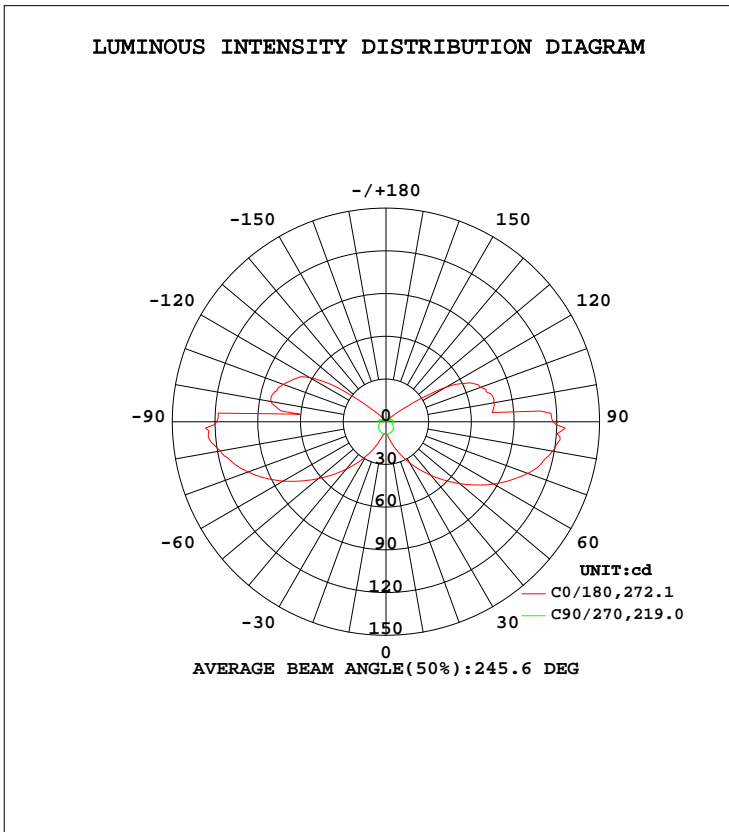


LUMINAIRE PHOTOMETRIC TEST REPORT

Test:U:120.0V I:0.1836A P:21.71W PF:0.9849 Lamp Flux:439.592x1 lm		
NAME: LED Luminaire	TYPE:N/A	WEIGHT:N/A
SPEC.:ASD-LWS28S-12D22CC-BK 3000K	DIM.: N/A	SERIAL No.:N/A
MFR.: ASD Lighting corp	SUR.:N/A	Shielding Angle:N/A

DATA OF LAMP		PHOTOMETRIC DATA Eff: 20.25 lm/W			
MODEL	PSZ2S221013001-10	I _{max} (cd)	126.8	S/MH(C0/180)	5.10
NOMINAL POWER(W)		LOR(%)	100.0	S/MH(C90/270)	1.38
RATED VOLTAGE(V)	120	TOTAL FLUX(lm)	439.59	η UP, DN(C0-180)	19.8, 30.6
NOMINAL FLUX(lm)	439.592	CIE CLASS	SEMI-D.	η UP, DN(C180-360)	18.9, 30.7
LAMPS INSIDE	1	η up(%)	38.8	CIBSE SHR NOM	1.50
TEST VOLTAGE(V)	120	η down(%)	61.2	CIBSE SHR MAX	1.55



C Range: 0 - 360DEG
 C Interval: 22.5DEG
 Test Speed: HIGH
 Temperature:25.1DEG
 Operators:Evan
 Test Date:2022-10-14

Evan Chen

γ Range: 0 - 180DEG
 γ Interval: 1.0DEG
 Test System:EVERFINE GO-R5000_V2 SYSTEM V2.0.351
 Humidity:39%
 Test Distance:2.532m [K=1.0000]
 Remarks:

Reviewed by : *Mexy He*

ZONAL FLUX DIAGRAM

ZONAL FLUX DIAGRAM:

γ	C0	C45	C90	C135	C180	C225	C270	C315	γ	Φ zone	Φ total	%lum, lamp
10	8.917	8.576	8.690	9.576	11.40	9.643	8.730	8.583	0- 10	0.8492	0.8492	0.19,0.19
20	15.50	10.56	8.442	14.53	20.63	14.76	8.505	10.69	10- 20	3.114	3.963	0.90,0.90
30	27.87	17.16	8.042	21.61	33.30	21.99	8.104	17.18	20- 30	7.443	11.41	2.59,2.59
40	43.50	26.06	7.541	30.10	49.06	30.59	7.475	25.75	30- 40	14.65	26.06	5.93,5.93
50	62.24	36.03	6.850	39.20	67.61	39.86	6.787	35.10	40- 50	24.84	50.90	11.6,11.6
60	83.37	46.01	6.043	47.79	87.43	48.77	5.907	44.40	50- 60	37.37	88.27	20.1,20.1
70	103.0	55.00	5.063	54.96	106.1	56.11	4.957	52.52	60- 70	50.60	138.9	31.6,31.6
80	118.2	61.54	4.443	59.59	118.9	61.09	4.382	58.67	70- 80	61.69	200.6	45.6,45.6
90	118.8	65.47	4.743	62.60	117.3	63.88	4.579	62.25	80- 90	68.69	269.2	61.2,61.2
100	82.07	64.93	5.014	61.20	76.85	62.09	4.812	61.52	90-100	65.47	334.7	76.1,76.1
110	76.81	58.48	4.242	50.62	70.56	50.65	4.374	55.60	100-110	56.27	391.0	88.9,88.9
120	62.24	23.31	2.811	11.17	48.63	11.79	2.921	20.05	110-120	35.77	426.8	97.1,97.1
130	18.06	1.879	1.427	0.6212	8.264	0.6121	1.589	0.9438	120-130	11.25	438.0	99.6,99.6
140	1.792	0.1216	0.5994	0.1224	0.0385	0.0932	0.5379	0.1093	130-140	1.451	439.5	100,100
150	0.0449	0.0980	0.1293	0.0953	0.0195	0.0597	0.0932	0.0823	140-150	0.0884	439.5	100,100
160	0.0322	0.0769	0.1010	0.0686	0.0153	0.0356	0.0698	0.0689	150-160	0.0322	439.6	100,100
170	0.0269	0.0553	0.0694	0.0402	0.0172	0.0208	0.0423	0.0518	160-170	0.0144	439.6	100,100
180	0.0251	0.0318	0.0343	0.0346	0.0241	0.0284	0.0369	0.0354	170-180	0.0036	439.6	100,100
DEG	LUMINOUS INTENSITY:cd									UNIT:lm		

Conical surface Flux(90deg): 37.032 lm

%lum = 8.4%

%lamp = 8.4%

Conical surface Flux(120deg): 88.27 lm

%lum = 20.1%

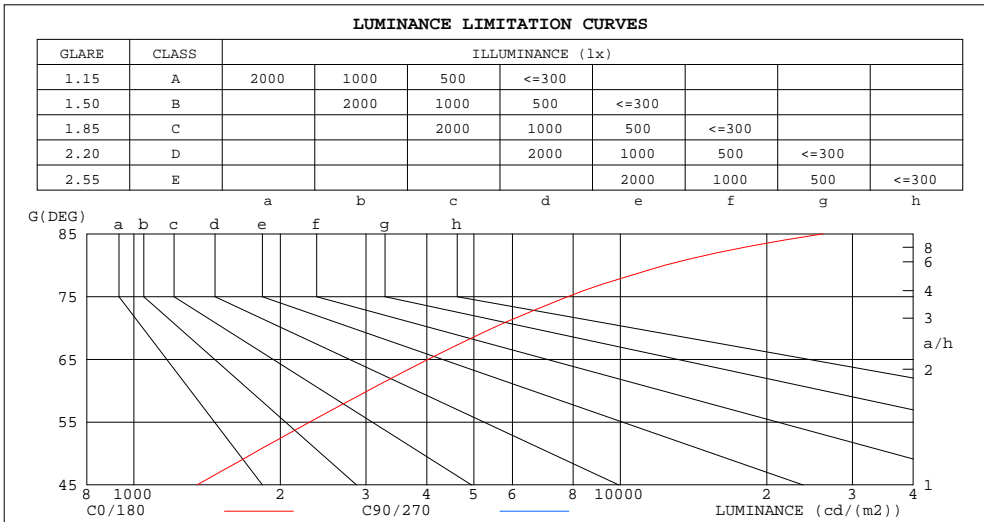
%lamp = 20.1%

C Range: 0 - 360DEG
 C Interval: 22.5DEG
 Test Speed: HIGH
 Temperature:25.1DEG
 Operators:Evan
 Test Date:2022-10-14

γ Range: 0 - 180DEG
 γ Interval: 1.0DEG
 Test System:EVERFINE GO-R5000_V2 SYSTEM V2.0.351
 Humidity:39%
 Test Distance:2.532m [K=1.0000]
 Remarks:

LUMINANCE LIMITATION CURVES

Test:U:120.0V I:0.1836A P:21.71W PF:0.9849 Lamp Flux:439.592x1 lm		
NAME: LED Luminaire	TYPE:N/A	WEIGHT:N/A
SPEC.:ASD-LWS28S-12D22CC-BK 3000K	DIM.: N/A	SERIAL No.:N/A
MFR.: ASD Lighting corp	SUR.:N/A	Shielding Angle:N/A



LUMINANCE cd/(m2)		
G(DEG)	C0/180	C90/270
85	26103	937
80	12356	463
75	7808	328
70	5471	268
65	4024	238
60	3028	218
55	2298	203
50	1758	193
45	1348	184

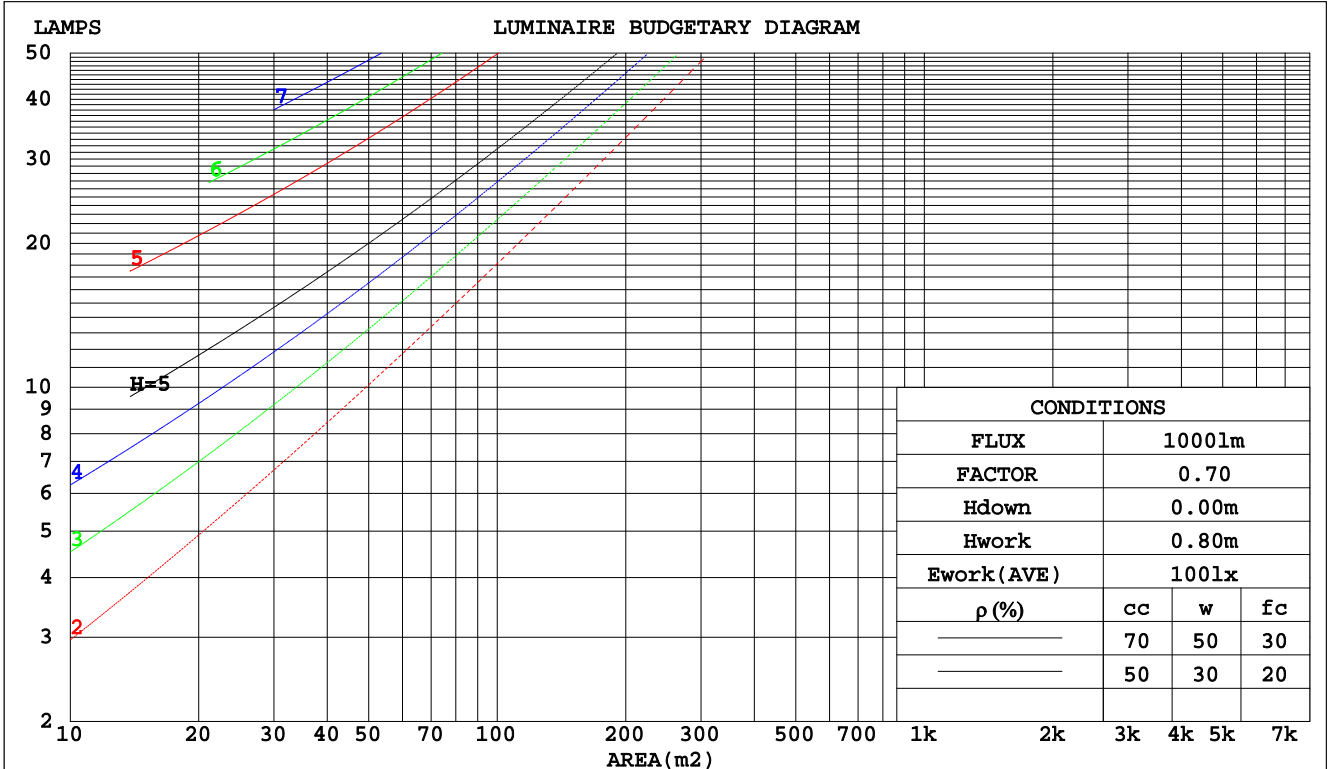
C Range: 0 - 360DEG
 C Interval: 22.5DEG
 Test Speed: HIGH
 Temperature:25.1DEG
 Operators:Evan
 Test Date:2022-10-14

γ Range: 0 - 180DEG
 γ Interval: 1.0DEG
 Test System:EVERFINE GO-R5000_V2 SYSTEM V2.0.351
 Humidity:39%
 Test Distance:2.532m [K=1.0000]
 Remarks:

CU AND LUMINAIRE BUDGETARY ESTIMATE DIAGRAM

Test:U:120.0V I:0.1836A P:21.71W PF:0.9849 Lamp Flux:439.592x1 lm		
NAME: LED Luminaire	TYPE:N/A	WEIGHT:N/A
SPEC.:ASD-LWS28S-12D22CC-BK 3000K	DIM.: N/A	SERIAL No.:N/A
MFR.: ASD Lighting corp	SUR.:N/A	Shielding Angle:N/A

pcc	80%			70%			50%			30%			10%			0
	50%	30%	10%	50%	30%	10%	50%	30%	10%	50%	30%	10%	50%	30%	10%	0
pw																0
pfc	20%			20%			20%			20%			20%			0
RCR	RCR:Room Cavity Ratio						Coefficients of Utilization(CU)									
0.0	1.10	1.10	1.10	1.03	1.03	1.03	.90	.90	.90	.78	.78	.78	.66	.66	.66	.61
1.0	.84	.77	.71	.78	.72	.66	.67	.62	.57	.56	.52	.48	.46	.43	.40	.35
2.0	.70	.60	.52	.64	.56	.48	.54	.47	.41	.45	.39	.35	.36	.32	.28	.23
3.0	.59	.48	.40	.54	.45	.37	.45	.38	.31	.37	.31	.26	.30	.25	.21	.17
4.0	.51	.40	.32	.47	.37	.29	.39	.31	.25	.32	.26	.20	.25	.20	.16	.12
5.0	.44	.34	.26	.41	.31	.24	.34	.26	.20	.28	.21	.16	.22	.17	.13	.09
6.0	.39	.29	.22	.36	.27	.20	.30	.22	.17	.25	.18	.14	.20	.14	.10	.07
7.0	.35	.25	.18	.32	.23	.17	.27	.20	.14	.22	.16	.11	.18	.13	.09	.06
8.0	.31	.22	.16	.29	.20	.15	.24	.17	.12	.20	.14	.10	.16	.11	.07	.05
9.0	.28	.20	.14	.26	.18	.13	.22	.15	.11	.18	.13	.08	.15	.10	.06	.04
10.0	.26	.17	.12	.24	.16	.11	.20	.14	.09	.17	.11	.07	.14	.09	.06	.03



C Range: 0 - 360DEG
 C Interval: 22.5DEG
 Test Speed: HIGH
 Temperature:25.1DEG
 Operators:Evan
 Test Date:2022-10-14

γ Range: 0 - 180DEG
 γ Interval: 1.0DEG
 Test System:EVERFINE GO-R5000_V2 SYSTEM V2.0.351
 Humidity:39%
 Test Distance:2.532m [K=1.0000]
 Remarks:

WEC AND CCEC

Test:U:120.0V I:0.1836A P:21.71W PF:0.9849 Lamp Flux:439.592x1 lm		
NAME: LED Luminaire	TYPE:N/A	WEIGHT:N/A
SPEC.:ASD-LWS28S-12D22CC-BK 3000K	DIM.: N/A	SERIAL No.:N/A
MFR.:ASD Lighting corp	SUR.:N/A	Shielding Angle:N/A

ρcc	80%			70%			50%			30%			10%			0
ρw	50%	30%	10%	50%	30%	10%	50%	30%	10%	50%	30%	10%	50%	30%	10%	0
ρfc	20%			20%			20%			20%			20%			0
RCR	RCR:Room Cavity Ratio						Wall Exitance Coefficients(WEC)									
0.0																
1.0	.503	.286	.091	.484	.276	.088	.448	.257	.082	.414	.239	.077	.384	.222	.072	
2.0	.403	.221	.068	.385	.212	.065	.352	.196	.061	.321	.180	.056	.293	.166	.052	
3.0	.342	.182	.054	.326	.175	.053	.296	.160	.049	.268	.147	.045	.242	.134	.041	
4.0	.299	.155	.046	.284	.149	.044	.256	.136	.041	.231	.124	.037	.207	.112	.034	
5.0	.265	.135	.039	.252	.129	.038	.227	.118	.035	.203	.107	.032	.181	.097	.029	
6.0	.239	.120	.034	.227	.115	.033	.204	.104	.030	.182	.095	.028	.162	.085	.025	
7.0	.218	.108	.031	.207	.103	.029	.185	.094	.027	.165	.085	.025	.146	.076	.022	
8.0	.200	.098	.027	.190	.093	.026	.170	.085	.024	.151	.077	.022	.134	.069	.020	
9.0	.185	.089	.025	.175	.085	.024	.157	.077	.022	.139	.070	.020	.123	.062	.018	
10.0	.172	.082	.023	.163	.079	.022	.146	.071	.020	.129	.064	.018	.114	.057	.016	

ρcc	80%			70%			50%			30%			10%			0
ρw	50%	30%	10%	50%	30%	10%	50%	30%	10%	50%	30%	10%	50%	30%	10%	0
ρfc	20%			20%			20%			20%			20%			0
RCR	RCR:Room Cavity Ratio						Ceiling Cavity Exitance Coefficients(CCEC)									
0.0	.486	.486	.486	.415	.415	.415	.283	.283	.283	.163	.163	.163	.052	.052	.052	
1.0	.491	.452	.417	.420	.388	.359	.288	.267	.248	.166	.154	.144	.053	.050	.047	
2.0	.487	.431	.384	.417	.371	.332	.286	.257	.232	.165	.149	.136	.053	.048	.044	
3.0	.480	.416	.365	.411	.359	.317	.282	.249	.222	.163	.146	.131	.052	.047	.043	
4.0	.472	.405	.354	.405	.350	.307	.278	.244	.216	.161	.143	.128	.052	.046	.042	
5.0	.463	.396	.346	.398	.342	.301	.274	.239	.212	.159	.140	.126	.051	.046	.042	
6.0	.456	.388	.340	.392	.336	.296	.270	.235	.210	.157	.138	.125	.051	.045	.041	
7.0	.448	.382	.336	.385	.331	.293	.266	.232	.207	.155	.137	.123	.050	.045	.041	
8.0	.441	.377	.333	.379	.327	.290	.263	.229	.206	.153	.135	.123	.049	.044	.041	
9.0	.434	.372	.330	.374	.323	.288	.259	.227	.205	.151	.134	.122	.049	.044	.040	
10.0	.428	.368	.328	.369	.320	.287	.256	.225	.204	.149	.133	.122	.048	.044	.040	

C Range: 0 - 360DEG
 C Interval: 22.5DEG
 Test Speed: HIGH
 Temperature:25.1DEG
 Operators:Evan
 Test Date:2022-10-14

γ Range: 0 - 180DEG
 γ Interval: 1.0DEG
 Test System:EVERFINE GO-R5000_V2 SYSTEM V2.0.351
 Humidity:39%
 Test Distance:2.532m [K=1.0000]
 Remarks:

UGR(Unified Glare Rating) Table

Test:U:120.0V I:0.1836A P:21.71W PF:0.9849 Lamp Flux:439.592x1 lm										
NAME: LED Luminaire					TYPE:N/A			WEIGHT:N/A		
SPEC.:ASD-LWS28S-12D22CC-BK 3000K					DIM.: N/A			SERIAL No.:N/A		
MFR.:ASD Lighting corp					SUR.:N/A			Shielding Angle:N/A		
ceiling/cavity	0.7	0.7	0.5	0.5	0.3	0.7	0.7	0.5	0.5	0.3
walls	0.5	0.3	0.5	0.3	0.3	0.5	0.3	0.5	0.3	0.3
working plane	0.2	0.2	0.2	0.2	0.2	0.2	0.2	0.2	0.2	0.2
Room dimensions	Viewed crosswise					Viewed endwise				
x = 2H y = 2H	14.9	16.2	15.7	17.0	18.0	5.7	7.0	6.4	7.8	8.8
3H	19.5	20.7	20.3	21.5	22.5	7.7	8.9	8.5	9.8	10.8
4H	21.9	23.1	22.7	23.9	25.0	8.8	10.0	9.6	10.8	11.8
6H	24.6	25.7	25.4	26.5	27.6	9.9	10.9	10.7	11.8	12.9
8H	26.0	27.0	26.8	27.9	29.0	10.4	11.4	11.2	12.3	13.4
12H	27.6	28.6	28.5	29.5	30.6	10.9	11.9	11.8	12.8	13.9
4H 2H	15.3	16.5	16.1	17.3	18.4	10.6	11.7	11.4	12.6	13.6
3H	20.2	21.2	21.0	22.1	23.2	12.6	13.6	13.5	14.5	15.6
4H	22.9	23.8	23.7	24.7	25.8	13.6	14.6	14.5	15.4	16.6
6H	25.7	26.6	26.6	27.5	28.6	14.6	15.4	15.4	16.3	17.4
8H	27.3	28.1	28.2	29.0	30.1	15.0	15.8	15.9	16.7	17.9
12H	29.0	29.8	29.9	30.7	31.9	15.5	16.2	16.4	17.2	18.3
8H 4H	23.1	23.9	24.0	24.8	26.0	17.2	18.0	18.1	18.9	20.1
6H	26.3	27.0	27.2	27.9	29.1	18.6	19.3	19.5	20.2	21.4
8H	28.1	28.7	29.0	29.7	30.9	19.2	19.8	20.1	20.7	21.9
12H	30.2	30.7	31.1	31.7	32.9	19.7	20.3	20.6	21.2	22.4
12H 4H	23.1	23.8	24.0	24.8	25.9	18.5	19.2	19.4	20.1	21.3
6H	26.4	27.0	27.3	28.0	29.2	20.2	20.8	21.1	21.8	22.9
8H	28.3	28.9	29.2	29.8	31.0	21.0	21.6	22.0	22.5	23.7
Variations with the observer position at spacings:										
S = 1.0H	+ 0.1 / - 0.1					+ 0.1 / - 0.1				
1.5H	+ 0.2 / - 0.3					+ 0.2 / - 0.1				
2.0H	+ 0.3 / - 0.4					+ 0.3 / - 0.3				

CIE Pub.117 Corrected 439.6 lm Total Lamp Luminous Flux. (8log(F/F0) = -2.9)

C Range: 0 - 360DEG
 C Interval: 22.5DEG
 Test Speed: HIGH
 Temperature:25.1DEG
 Operators:Evan
 Test Date:2022-10-14

γ Range: 0 - 180DEG
 γ Interval: 1.0DEG
 Test System:EVERFINE GO-R5000_V2 SYSTEM V2.0.351
 Humidity:39%
 Test Distance:2.532m [K=1.0000]
 Remarks:

UTILIZATION FACTORS TABLE

Test:U:120.0V I:0.1836A P:21.71W PF:0.9849 Lamp Flux:439.592x1 lm		
NAME: LED Luminaire	TYPE:N/A	WEIGHT:N/A
SPEC.:ASD-LWS28S-12D22CC-BK 3000K	DIM.: N/A	SERIAL No.:N/A
MFR.: ASD Lighting corp	SUR.:N/A	Shielding Angle:N/A

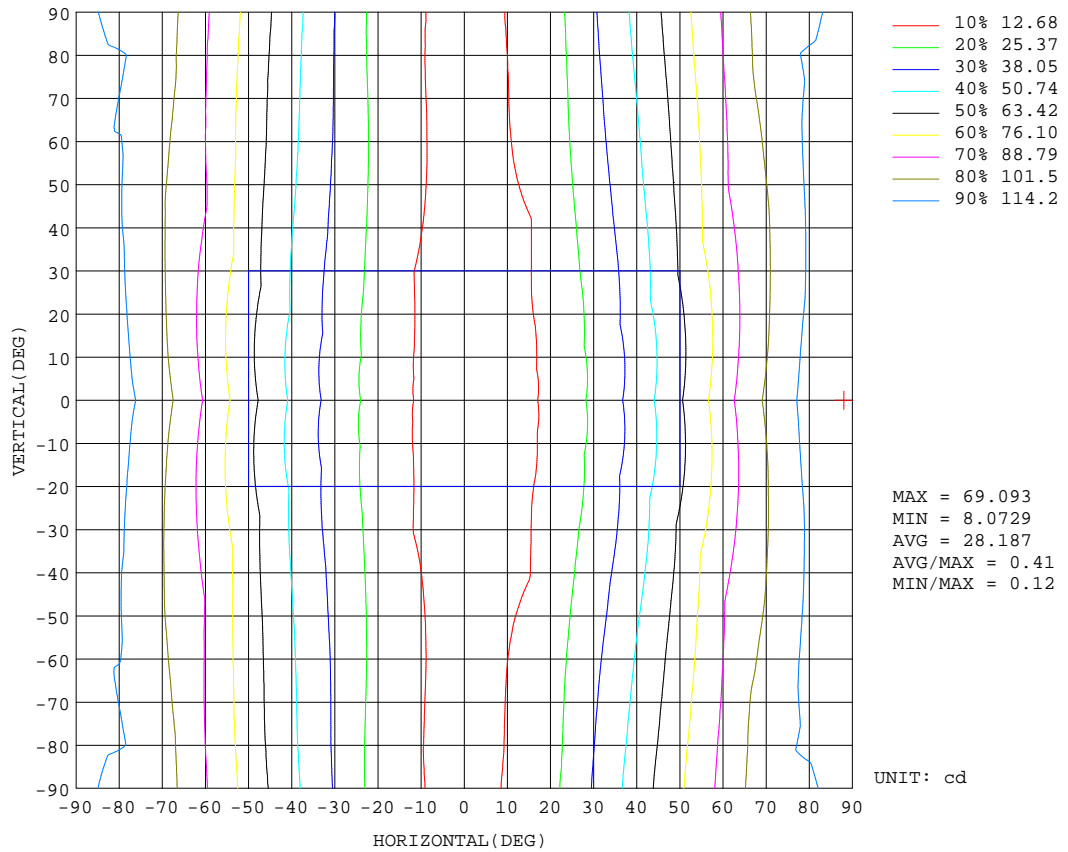
REFLECTANCE										
Ceiling	0.8	0.8	0.8	0.7	0.7	0.7	0.5	0.5	0.5	0
Walls	0.7	0.5	0.3	0.7	0.5	0.3	0.7	0.5	0.3	0
Working plane	0.2	0.2	0.2	0.2	0.2	0.2	0.2	0.2	0.2	0
ROOM INDEX	UTILIZATION FACTORS(PERCENT) $k(RI) \times RCR = 5$									
k = 0.60	34	20	12	32	19	11	30	18	11	4
0.80	41	26	17	39	25	16	36	23	15	7
1.00	48	32	22	46	31	21	41	31	20	10
1.25	55	39	28	52	37	27	46	34	25	13
1.50	60	44	33	57	42	32	50	38	29	16
2.00	69	54	42	64	51	40	56	45	36	21
2.50	74	60	49	69	57	46	60	50	42	24
3.00	78	65	55	73	61	52	64	54	46	28
4.00	84	73	63	79	68	60	68	60	53	32
5.00	88	78	69	82	73	65	71	64	58	36
ROOM INDEX	UF(total)									Direct
According to DIN EN 13032-2 2004			Suspended				SHRNOM = 1.25			

C Range: 0 - 360DEG
 C Interval: 22.5DEG
 Test Speed: HIGH
 Temperature:25.1DEG
 Operators:Evan
 Test Date:2022-10-14

γ Range: 0 - 180DEG
 γ Interval: 1.0DEG
 Test System:EVERFINE GO-R5000_V2 SYSTEM V2.0.351
 Humidity:39%
 Test Distance:2.532m [K=1.0000]
 Remarks:

ISOCANDELA DIAGRAM

Test:U:120.0V I:0.1836A P:21.71W PF:0.9849 Lamp Flux:439.592x1 lm		
NAME: LED Luminaire	TYPE:N/A	WEIGHT:N/A
SPEC.:ASD-LWS28S-12D22CC-BK 3000K	DIM.: N/A	SERIAL No.:N/A
MFR.: ASD Lighting corp	SUR.:N/A	Shielding Angle:N/A

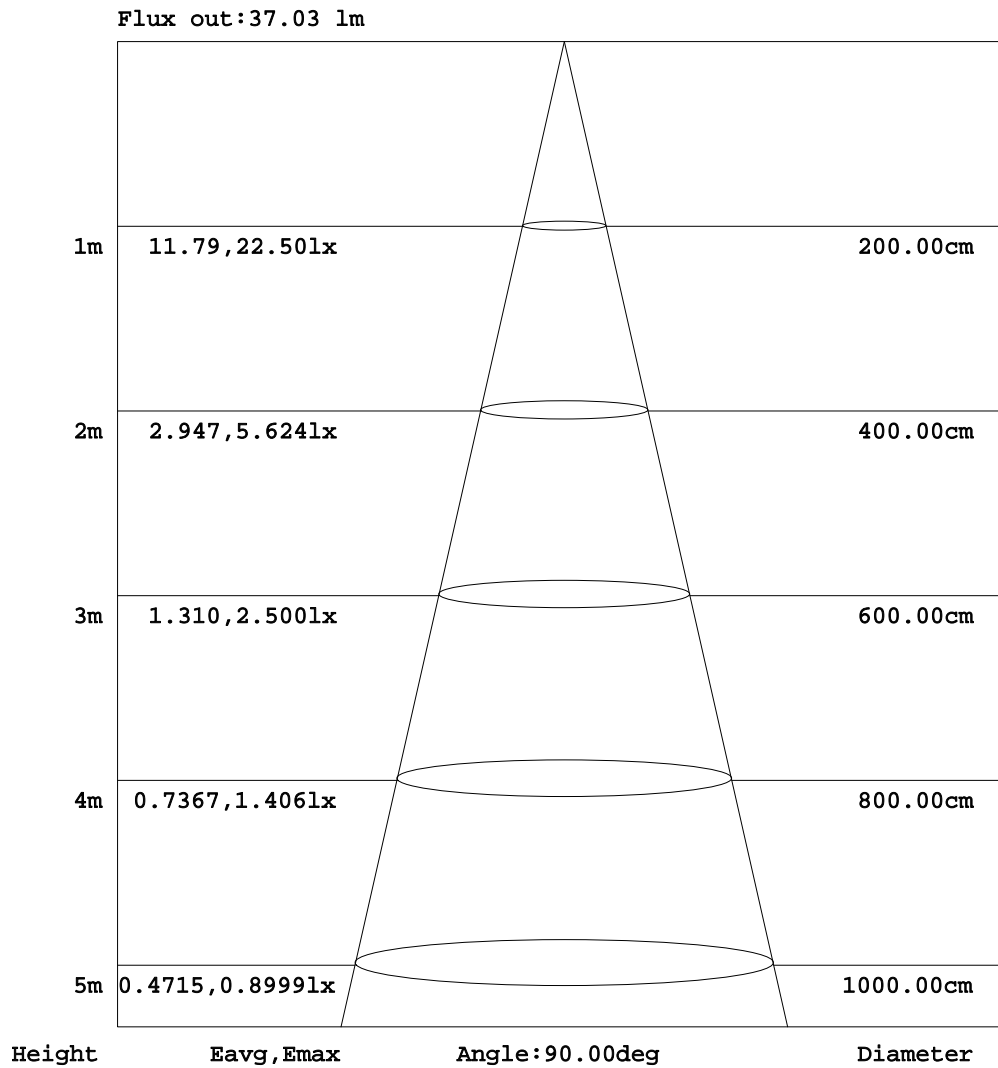


C Range: 0 - 360DEG
 C Interval: 22.5DEG
 Test Speed: HIGH
 Temperature:25.1DEG
 Operators:Evan
 Test Date:2022-10-14

γ Range: 0 - 180DEG
 γ Interval: 1.0DEG
 Test System:EVERFINE GO-R5000_V2 SYSTEM V2.0.351
 Humidity:39%
 Test Distance:2.532m [K=1.0000]
 Remarks:

AAI Figure

Test:U:120.0V I:0.1836A P:21.71W PF:0.9849 Lamp Flux:439.592x1 lm		
NAME: LED Luminaire	TYPE:N/A	WEIGHT:N/A
SPEC.:ASD-LWS28S-12D22CC-BK 3000K	DIM.: N/A	SERIAL No.:N/A
MFR.: ASD Lighting corp	SUR.:N/A	Shielding Angle:N/A



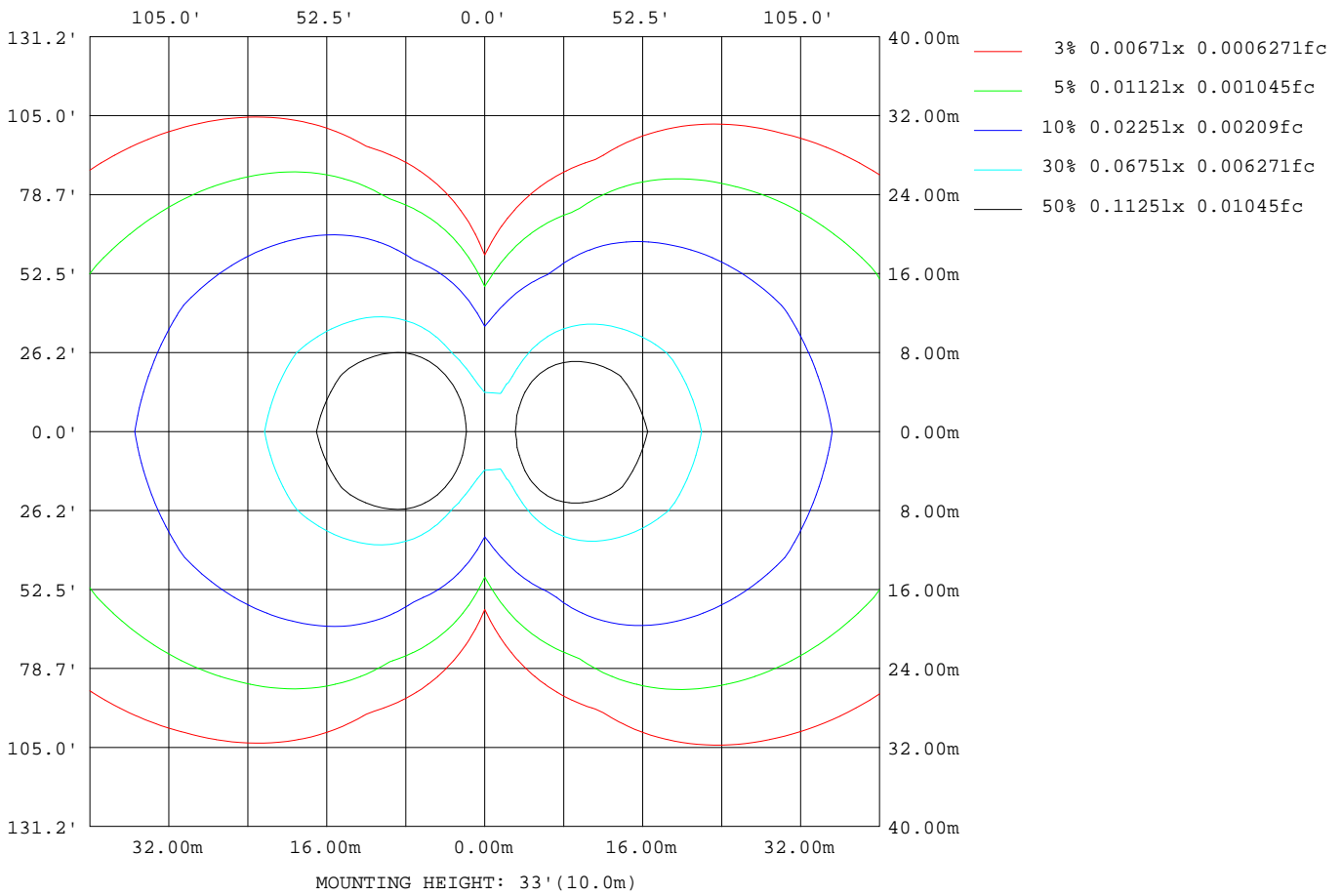
Note:The Curves indicate the illuminated area and the average illumination when the luminaire is at different distance.

C Range: 0 - 360DEG
 C Interval: 22.5DEG
 Test Speed: HIGH
 Temperature:25.1DEG
 Operators:Evan
 Test Date:2022-10-14

γ Range: 0 - 180DEG
 γ Interval: 1.0DEG
 Test System:EVERFINE GO-R5000_V2 SYSTEM V2.0.351
 Humidity:39%
 Test Distance:2.532m [K=1.0000]
 Remarks:

ISOLUX DIAGRAM

Test:U:120.0V I:0.1836A P:21.71W PF:0.9849 Lamp Flux:439.592x1 lm		
NAME: LED Luminaire	TYPE:N/A	WEIGHT:N/A
SPEC.:ASD-LWS28S-12D22CC-BK 3000K	DIM.: N/A	SERIAL No.:N/A
MFR.: ASD Lighting corp	SUR.:N/A	Shielding Angle:N/A



C Range: 0 - 360DEG
 C Interval: 22.5DEG
 Test Speed: HIGH
 Temperature:25.1DEG
 Operators:Evan
 Test Date:2022-10-14

γ Range: 0 - 180DEG
 γ Interval: 1.0DEG
 Test System:EVERFINE GO-R5000_V2 SYSTEM V2.0.351
 Humidity:39%
 Test Distance:2.532m [K=1.0000]
 Remarks:

LED Avg.L Report

Test:U:120.0V I:0.1836A P:21.71W PF:0.9849 Lamp Flux:439.592x1 lm		
NAME: LED Luminaire	TYPE:N/A	WEIGHT:N/A
SPEC.:ASD-LWS28S-12D22CC-BK 3000K	DIM.: N/A	SERIAL No.:N/A
MFR.: ASD Lighting corp	SUR.:N/A	Shielding Angle:N/A

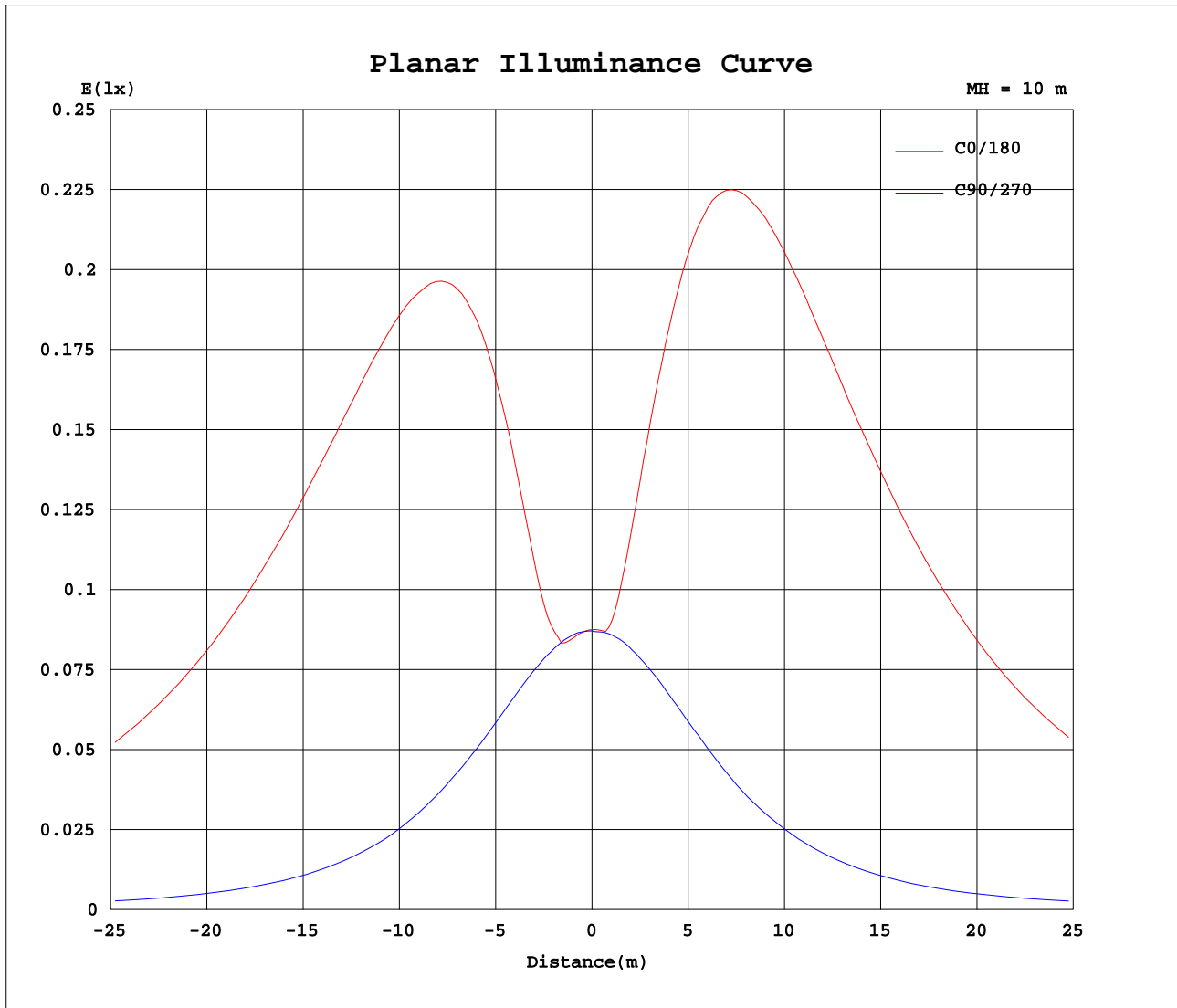
AvgL	cd/m2
L_0~180(65)av	4091
L_0~180(75)av	7868
L_0~180(85)av	25813
L_90~270(65)av	236
L_90~270(75)av	324
L_90~270(85)av	934
L_45(65)av	2189
L_45(75)av	4046
L_45(85)av	12961

Standard: GB/T 29293-2012

C Range: 0 - 360DEG
 C Interval: 22.5DEG
 Test Speed: HIGH
 Temperature:25.1DEG
 Operators:Evan
 Test Date:2022-10-14

γ Range: 0 - 180DEG
 γ Interval: 1.0DEG
 Test System:EVERFINE GO-R5000_V2 SYSTEM V2.0.351
 Humidity:39%
 Test Distance:2.532m [K=1.0000]
 Remarks:

Planar Illuminance Curve



C Range: 0 - 360DEG
 C Interval: 22.5DEG
 Test Speed: HIGH
 Temperature: 25.1DEG
 Operators: Evan
 Test Date: 2022-10-14

γ Range: 0 - 180DEG
 γ Interval: 1.0DEG
 Test System: EVERFINE GO-R5000_V2 SYSTEM V2.0.351
 Humidity: 39%
 Test Distance: 2.532m [K=1.0000]
 Remarks:

LUMINOUS DISTRIBUTION INTENSITY DATA

Test:U:120.0V I:0.1836A P:21.71W PF:0.9849 Lamp Flux:439.592x1 lm		
NAME: LED Luminaire	TYPE:N/A	WEIGHT:N/A
SPEC.:ASD-LWS28S-12D22CC-BK 3000K	DIM.: N/A	SERIAL No.:N/A
MFR.: ASD Lighting corp	SUR.:N/A	Shielding Angle:N/A

Table--1

UNIT: cd

C(DEG) γ (DEG)	0	22.5	45	67.5	90	112.5	135	157.5	180	202.5	225	247.5	270	292.5	315	337.5			
0	8.74	8.74	8.74	8.74	8.74	8.74	8.74	8.74	8.74	8.74	8.74	8.74	8.74	8.74	8.74	8.74			
5	8.62	8.63	8.69	8.72	8.75	8.77	8.72	8.81	8.92	8.81	8.74	8.76	8.75	8.74	8.68	8.64			
10	8.92	8.69	8.58	8.63	8.69	8.71	9.58	10.8	11.4	10.9	9.64	8.72	8.73	8.67	8.58	8.76			
15	11.1	10.4	9.04	8.52	8.59	8.98	11.7	14.3	15.6	14.5	11.8	9.03	8.63	8.58	9.13	10.5			
20	15.5	14.1	10.6	8.43	8.44	9.70	14.5	18.8	20.6	19.0	14.8	9.78	8.51	8.50	10.7	14.2			
25	21.2	19.1	13.5	8.57	8.26	10.7	17.9	24.0	26.6	24.3	18.2	10.9	8.31	8.62	13.6	19.2			
30	27.9	24.9	17.2	9.06	8.04	12.0	21.6	29.9	33.3	30.2	22.0	12.1	8.10	9.10	17.2	25.0			
35	35.3	31.5	21.4	10.0	7.82	13.4	25.7	36.3	40.9	36.7	26.2	13.5	7.81	9.97	21.3	31.5			
40	43.5	38.7	26.1	11.4	7.54	14.9	30.1	43.5	49.1	43.8	30.6	15.1	7.48	11.3	25.7	38.6			
45	52.5	46.4	31.0	13.2	7.18	16.4	34.6	51.0	58.1	51.4	35.2	16.6	7.16	12.9	30.4	46.2			
50	62.2	54.8	36.0	15.0	6.85	17.9	39.2	58.9	67.6	59.3	39.9	18.2	6.79	14.6	35.1	54.4			
55	72.6	63.4	41.1	16.9	6.44	19.3	43.6	67.0	77.5	67.4	44.4	19.8	6.38	16.3	39.8	62.8			
60	83.4	72.3	46.0	18.8	6.04	20.7	47.8	75.1	87.4	75.4	48.8	21.2	5.91	17.9	44.4	71.4			
65	93.7	80.8	50.8	20.4	5.55	21.8	51.7	82.7	96.9	83.1	52.7	22.4	5.45	19.5	48.7	79.6			
70	103	88.4	55.0	22.0	5.06	22.7	55.0	89.0	106	89.9	56.1	23.4	4.96	20.8	52.5	86.8			
75	111	94.6	58.6	23.3	4.70	23.4	57.5	94.5	113	94.8	58.9	24.1	4.55	21.9	55.8	92.9			
80	118	99.7	61.5	24.3	4.44	23.8	59.6	98.5	119	98.8	61.1	24.6	4.38	22.8	58.7	98.0			
85	125	104	64.0	25.0	4.52	24.2	61.3	101	123	102	62.8	24.8	4.45	23.5	60.9	102			
90	119	105	65.5	25.6	4.74	24.4	62.6	103	117	103	63.9	25.1	4.58	24.1	62.3	104			
95	60.8	106	66.0	26.2	4.91	24.4	62.4	103	74.9	103	63.7	24.9	4.65	24.3	62.4	103			
100	82.1	103	64.9	25.7	5.01	23.5	61.2	100	76.9	99.9	62.1	23.5	4.81	24.1	61.5	101			
105	81.0	98.0	62.4	20.8	4.79	15.3	58.6	94.8	76.1	94.1	59.4	14.4	4.65	18.2	59.0	95.9			
110	76.8	88.4	58.5	9.12	4.24	6.97	50.6	87.7	70.6	82.8	50.6	6.01	4.37	8.18	55.6	86.8			
115	71.0	71.2	46.0	3.93	3.67	4.07	31.4	70.9	64.8	60.1	30.9	3.99	3.75	4.17	42.3	70.2			
120	62.2	52.4	23.3	2.55	2.81	2.70	11.2	43.1	48.6	37.1	11.8	2.82	2.92	2.82	20.0	49.4			
125	42.5	28.2	8.40	1.78	2.03	1.82	3.71	15.4	23.2	14.6	3.81	1.95	2.19	1.96	7.25	25.2			
130	18.1	10.3	1.88	1.21	1.43	1.24	0.62	5.74	8.26	5.25	0.61	1.34	1.59	1.30	0.94	8.61			
135	7.02	4.47	0.30	0.78	0.96	0.78	0.30	0.16	3.38	0.14	0.23	0.78	0.99	0.77	0.28	3.84			
140	1.79	0.11	0.12	0.46	0.60	0.46	0.12	0.08	0.04	0.07	0.09	0.41	0.54	0.41	0.11	0.09			
145	0.05	0.08	0.11	0.18	0.30	0.19	0.11	0.07	0.03	0.05	0.07	0.10	0.19	0.12	0.09	0.07			
150	0.04	0.07	0.10	0.12	0.13	0.12	0.10	0.06	0.02	0.04	0.06	0.08	0.09	0.09	0.08	0.06			
155	0.04	0.06	0.09	0.11	0.12	0.11	0.08	0.05	0.02	0.03	0.05	0.06	0.08	0.08	0.07	0.06			
160	0.03	0.05	0.08	0.10	0.10	0.09	0.07	0.04	0.02	0.02	0.04	0.05	0.07	0.07	0.07	0.05			
165	0.03	0.04	0.07	0.08	0.09	0.08	0.05	0.03	0.02	0.02	0.02	0.04	0.06	0.06	0.06	0.05			
170	0.03	0.04	0.06	0.07	0.07	0.06	0.04	0.03	0.02	0.02	0.02	0.03	0.04	0.05	0.05	0.04			
175	0.03	0.03	0.04	0.05	0.05	0.04	0.04	0.03	0.02	0.02	0.02	0.03	0.03	0.04	0.04	0.04			
180	0.03	0.03	0.03	0.04	0.03	0.04	0.03	0.03	0.02	0.03	0.03	0.03	0.04	0.03	0.04	0.03			

C Range: 0 - 360DEG
 C Interval: 22.5DEG
 Test Speed: HIGH
 Temperature:25.1DEG
 Operators:Evan
 Test Date:2022-10-14

γ Range: 0 - 180DEG
 γ Interval: 1.0DEG
 Test System:EVERFINE GO-R5000_V2 SYSTEM V2.0.351
 Humidity:39%
 Test Distance:2.532m [K=1.0000]
 Remarks: