



LED VANITY LINEAR LOFT

► **DESIGN** - LED VANITY LINEAR LOFT has a sleek, modern design that allows you to have a stylish look with efficient lighting. Durable housing resistant to rust and impact provides many years of service. The acrylic lens with a 130° beam angle grants you even light distribution. It is designed to operate on 120V circuits.

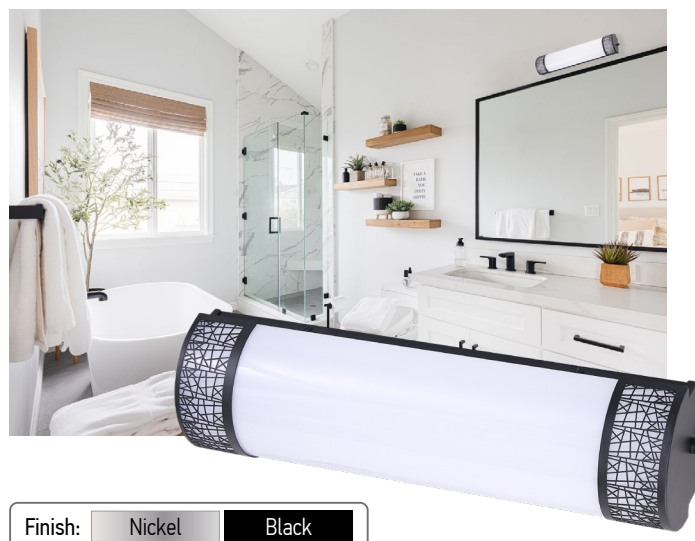
► **COLOR SELECTABLE** - You can choose either a 2,700K soft white, 3,000K warm white, 3,500K neutral white, 4,000K cool white, or 5,000K daylight color temperature.

► **DIMMING** - Smooth triac dimming capabilities ranging from 10% to 100% with modern LED dimmers allow you to control the look and feel of your space.

► **APPLICATION** - This fixture creates a bright light that is perfect for bathroom spaces or any other common areas. It is also Damp Locations rated. Can be installed vertically and horizontally.

► **ADVANTAGES** - With a lifespan of 50,000 hours, these fixtures are made to last decades under normal operation! ASD provides a 5-year limited warranty along with ETL certification to guarantee top quality products and safety!

Catalog number	
Notes	
Type	



Finish: ☐ Nickel ☒ Black

Model	Size	Watts	Voltage	Dimmable	Lumens	CCT	Finish	Dimensions (LxWxH)
ASD-LVF-LF-18D20AC-NK	18 inch	20W	120 V	TRIAC	1,276/1,379/1,403/1,462/1,408 lm	5CCT (2,700/3,000/3,500/4,000/5,000 K)	Nickel	19-1/16" x 5-1/4" x 3-11/16"
ASD-LVF-LF-18D20AC-BK	18 inch	20W	120 V	TRIAC	1,276/1,379/1,403/1,462/1,408 lm	5CCT (2,700/3,000/3,500/4,000/5,000 K)	Black	19-1/16" x 5-1/4" x 3-11/16"
ASD-LVF-LF-24D25AC-NK	24 inch	25W	120 V	TRIAC	1,737/1,833/1,856/1,939/1,915 lm	5CCT (2,700/3,000/3,500/4,000/5,000 K)	Nickel	25-1/2" x 5-1/4" x 3-11/16"
ASD-LVF-LF-24D25AC-BK	24 inch	25W	120 V	TRIAC	1,737/1,833/1,856/1,939/1,915 lm	5CCT (2,700/3,000/3,500/4,000/5,000 K)	Black	25-1/2" x 5-1/4" x 3-11/16"
ASD-LVF-LF-36D30AC-NK	36 inch	30W	120 V	TRIAC	2,236/2,370/2,390/2,515/2,477 lm	5CCT (2,700/3,000/3,500/4,000/5,000 K)	Nickel	37-1/16" x 5-1/4" x 3-11/16"
ASD-LVF-LF-36D30AC-BK	36 inch	30W	120 V	TRIAC	2,236/2,370/2,390/2,515/2,477 lm	5CCT (2,700/3,000/3,500/4,000/5,000 K)	Black	37-1/16" x 5-1/4" x 3-11/16"
ASD-LVF-LF-48D35AC-NK	48 inch	35W	120 V	TRIAC	2,791/2,886/2,910/3,098/3,081 lm	5CCT (2,700/3,000/3,500/4,000/5,000 K)	Nickel	49" x 5-1/4" x 3-11/16"
ASD-LVF-LF-48D35AC-BK	48 inch	35W	120 V	TRIAC	2,791/2,886/2,910/3,098/3,081 lm	5CCT (2,700/3,000/3,500/4,000/5,000 K)	Black	49" x 5-1/4" x 3-11/16"

ORDERING INFORMATION

Model	UPC	Pcs. per carton	Carton size	Carton weight	GTIN 14
ASD-LVF-LF-18D20AC-NK	810128110105	4	20.5" x 15.2" x 11.8"	17.6 lbs	10810128110102
ASD-LVF-LF-18D20AC-BK	810128110099	4	20.5" x 15.2" x 11.8"	17.6 lbs	10810128110096
ASD-LVF-LF-24D25AC-NK	810128110129	4	27.2" x 15.2" x 11.8"	22.6 lbs	10810128110126
ASD-LVF-LF-24D25AC-BK	810128110112	4	27.2" x 15.2" x 11.8"	22.6 lbs	10810128110119
ASD-LVF-LF-36D30AC-NK	810128110143	4	38.8" x 15.2" x 11.8"	30.1 lbs	10810128110140
ASD-LVF-LF-36D30AC-BK	810128110136	4	38.8" x 15.2" x 11.8"	30.1 lbs	10810128110133
ASD-LVF-LF-48D35AC-NK	810128110167	4	50.6" x 15.2" x 11.8"	38.6 lbs	10810128110164
ASD-LVF-LF-48D35AC-BK	810128110150	4	50.6" x 15.2" x 11.8"	38.6 lbs	10810128110157

For most up-to-date spec sheets please refer to asd-lighting.com

ASD LIGHTING CORP

E-mail: orders@asd-lighting.com | Web site: www.asd-lighting.com





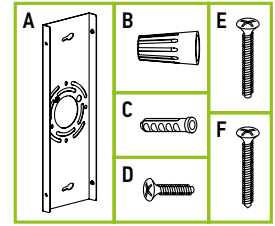
LED VANITY LINEAR LOFT

PRODUCT SPECIFICATIONS:

Construction & Materials				
Housing	Steel			
Lens	Acrylic			
Finish	Nickel, Black			
Weight	ASD-LVF-LF-18D20AC-NK	3 lbs (1.4 kg)	ASD-LVF-LF-18D20AC-BK	
	ASD-LVF-LF-24D25AC-NK			
	ASD-LVF-LF-24D25AC-BK	3.8 lbs (1.7 kg)	ASD-LVF-LF-36D30AC-NK	
	ASD-LVF-LF-36D30AC-BK			
	ASD-LVF-LF-48D35AC-NK	5.3 lbs (2.4 kg)	ASD-LVF-LF-48D35AC-BK	
	ASD-LVF-LF-48D35AC-BK			
	ASD-LVF-LF-48D35AC-BK			
Environmental system				
Work environment	Suitable for Damp Locations			
Operating temperature	-4°F to 113°F (-20°C to 45°C)			
L-70 life	> 50,000 hrs			
Optical system				
Luminous flux	ASD-LVF-LF-18D20AC-NK	1,276/1,379/1,403/1,462/1,408 lm	ASD-LVF-LF-18D20AC-BK	
	ASD-LVF-LF-24D25AC-NK			
	ASD-LVF-LF-24D25AC-BK	1,737/1,833/1,856/1,939/1,915 lm	ASD-LVF-LF-36D30AC-NK	
	ASD-LVF-LF-36D30AC-BK			
	ASD-LVF-LF-48D35AC-NK	2,236/2,370/2,390/2,515/2,477 lm	ASD-LVF-LF-48D35AC-BK	
	ASD-LVF-LF-48D35AC-BK			
	ASD-LVF-LF-48D35AC-BK			
Color temperature	5CCT switch (2,700/3,000/3,500/4,000/5,000 K), 3,000 K by default			
CRI	> 80			
Electrical system				
Input voltage	120 V			
Max input current	ASD-LVF-LF-18D20AC-NK	0.2 A	ASD-LVF-LF-18D20AC-BK	
	ASD-LVF-LF-24D25AC-NK			
	ASD-LVF-LF-24D25AC-BK	0.25 A	ASD-LVF-LF-36D30AC-NK	
	ASD-LVF-LF-36D30AC-BK			
	ASD-LVF-LF-48D35AC-NK	0.32 A	ASD-LVF-LF-48D35AC-BK	
	ASD-LVF-LF-48D35AC-BK			
	ASD-LVF-LF-48D35AC-BK			
Inrush current (Action time)	ASD-LVF-LF-18D20AC-NK	0.16 A (0.1 S)	ASD-LVF-LF-18D20AC-BK	
	ASD-LVF-LF-24D25AC-NK			
	ASD-LVF-LF-24D25AC-BK	0.21 A (0.1 S)	ASD-LVF-LF-36D30AC-NK	
	ASD-LVF-LF-36D30AC-BK			
	ASD-LVF-LF-48D35AC-NK	0.27 A (0.1 S)	ASD-LVF-LF-48D35AC-BK	
	ASD-LVF-LF-48D35AC-BK			
	ASD-LVF-LF-48D35AC-BK			
Off state power	0W			
Power consumption	ASD-LVF-LF-18D20AC-NK	20W	ASD-LVF-LF-18D20AC-BK	
	ASD-LVF-LF-24D25AC-NK			
	ASD-LVF-LF-24D25AC-BK	25W	ASD-LVF-LF-36D30AC-NK	
	ASD-LVF-LF-36D30AC-BK			
	ASD-LVF-LF-48D35AC-NK	30W	ASD-LVF-LF-48D35AC-BK	
	ASD-LVF-LF-48D35AC-BK			
	ASD-LVF-LF-48D35AC-BK			
Power factor	> 0.9			
Surge protection DM/CM	1.25 kV / 1.25 kV			
Dimming range				
10-100%				
Dimming compatible controls				
Brand	Lutron		Leviton	
Models	MACL-153MLH-WH	DVCL-153PR	R02-DW6HD-2RW	DSL06
	STCL-153PH-WH	P-PKG1W	R00-RNL06-0TW	
	PD-6WCL-WH-R		R68-06674-POT	
Regular and voluntary certifications				
5-year limited warranty		cETLus certified 4001256		

PACKAGE CONTENTS:

Description	Q-ty
LED Vanity Linear Loft	1
Mounting plate (A)	1
Wire nut (B)	3
Anchor (C)	2
Fixture screw (D)	4
Mounting screw (E)	2
Self-tapping screw (F)	2
Box	1



INSTALLATION GUIDE

IMPORTANT SAFETY INFORMATION:

Please read all the instructions below before installation.

- Make sure that the supply voltage corresponds to the rated product voltage.
- The product must be installed by a qualified electrician in accordance with the National Electrical Code and corresponding local codes.
- If the product is damaged, do not use it.

⚠ WARNING

RISK OF PERSONAL INJURY – READ and follow all WARNINGS and installation instructions. Keep or give to the owner for future reference.

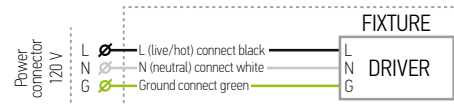
Risk of cuts: Wear gloves to prevent cuts or abrasions when removing from carton, handling, installing, and maintaining this product.

Risk of electric shock: This product must be installed in accordance with the applicable installation code by a person familiar with the construction and operation of the product and the hazards involved.

Risk of Fire: Minimum 194°F supply conductors. Consult a qualified electrician to ensure correct branch circuit conductor.

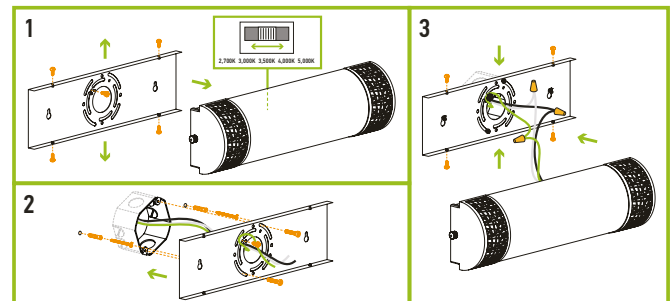
ASD® assumes no responsibility for claims arising out of improper or careless Installation or handling of this product.

ELECTRICAL SCHEMATIC DIAGRAM:



INSTALLATION STEPS:

- Unscrew the four fixture screws from both sides of the fixture and remove the mounting plate. Choose preferred color temperature on the back side of the fixture by adjusting switch position.
- Place the mounting plate against the wall covering the outlet box. Mark placement of the narrow end of mounting keyhole slots. Remove the mounting plate and drill two appropriate sized holes for anchors, insert anchors into the holes, twist two self-tapping screws into the anchors. Attach the mounting plate to the wall with two mounting screws and tighten self-tapping screws.
- Connect the wires: Black to Black, White to White, Ground to Ground. Secure the connection with wire nuts. Attach the fixture body to the mounting plate using four fixture screws.



For most up-to-date spec sheets please refer to asd-lighting.com