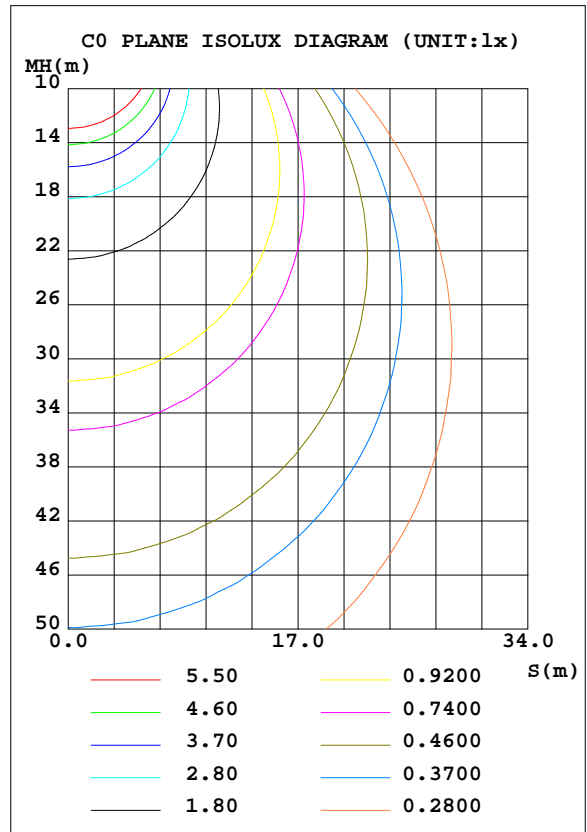
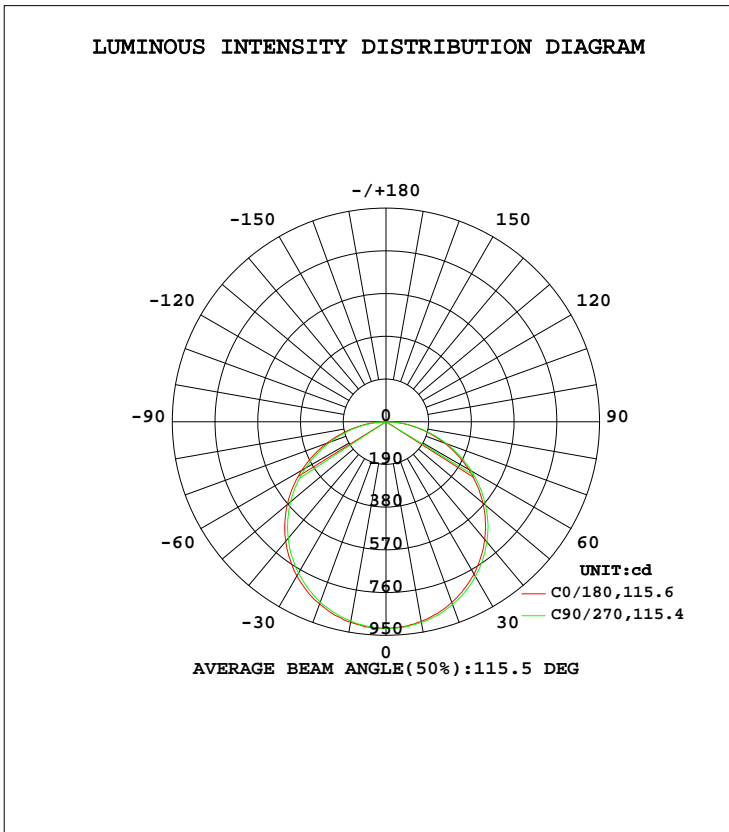


LUMINAIRE PHOTOMETRIC TEST REPORT

Test:U:120.08V I:0.3302A P:38.090W PF:0.9606 Freq:60.00Hz Lamp Flux:2740.07x1 lm		
NAME:ASD-MPR-24D38WH 5000K	TYPE: N/A	WEIGHT: N/A
SPEC.:LED Luminaires	DIM.: N/A	SERIAL No.: N/A
MFR.: ASD Lighting Corp	SUR.: N/A	Shielding Angle: N/A

DATA OF LAMP		PHOTOMETRIC DATA				Eff: 71.94 lm/W
MODEL	ASD-MPR-24D38WH 5000K	I _{max} (cd)	920.8	S/MH(C0/180)		1.26
NOMINAL POWER(W)	38W	LOR(%)	100.0	S/MH(C90/270)		1.29
RATED VOLTAGE(V)	120	TOTAL FLUX(lm)	2740.1	η UP, DN(C0-180)		0.0,49.3
NOMINAL FLUX(lm)	2740.07	CIE CLASS	DIRECT	η UP, DN(C180-360)		0.0,50.7
LAMPS INSIDE	1	η up(%)	0.0	CIBSE SHR NOM		1.25
TEST VOLTAGE(V)	120	η down(%)	100.0	CIBSE SHR MAX		1.35



C Range: 0 - 360DEG
 C Interval: 22.5DEG
 Test Speed: HIGH
 Temperature:25.2DEG
 Operators:Water
 Test Date:2024-08-28

γ Range: 0 - 180DEG
 γ Interval: 1.0DEG
 Test System:EVERFINE GO-R5000_V2 SYSTEM V2.00.446
 Humidity:48%
 Test Distance:2.519m [K=1.0000]
 Remarks:

ZONAL FLUX DIAGRAM

ZONAL FLUX DIAGRAM:

γ	C0	C45	C90	C135	C180	C225	C270	C315	γ	Φ zone	Φ total	%lum, lamp
10	905.7	904.0	900.7	899.9	902.0	904.7	906.7	909.1	0- 10	87.04	87.04	3.18,3.18
20	862.9	860.3	853.7	849.7	855.0	860.7	864.8	866.6	10- 20	250.0	337.1	12.3,12.3
30	792.2	785.9	778.0	773.7	782.8	789.3	795.1	797.2	20- 30	381.1	718.2	26.2,26.2
40	693.8	687.5	675.9	673.9	684.0	691.7	698.6	702.6	30- 40	463.5	1182	43.1,43.1
50	572.9	566.3	554.1	550.6	562.5	572.0	577.9	581.5	40- 50	486.3	1668	60.9,60.9
60	432.6	425.7	413.9	410.7	425.8	434.2	438.9	440.9	50- 60	446.3	2114	77.2,77.2
70	280.5	274.9	263.2	260.3	277.1	285.0	287.4	288.1	60- 70	349.4	2464	89.9,89.9
80	128.6	124.4	115.0	113.7	128.0	135.0	135.5	136.0	70- 80	212.4	2676	97.7,97.7
90	0	0	0	0	0	0	0	0	80- 90	64.03	2740	100,100
100	0	0	0	0	0	0	0	0	90-100	0	2740	100,100
110	0	0	0	0	0	0	0	0	100-110	0	2740	100,100
120	0	0	0	0	0	0	0	0	110-120	0	2740	100,100
130	0	0	0	0	0	0	0	0	120-130	0	2740	100,100
140	0	0	0	0	0	0	0	0	130-140	0	2740	100,100
150	0	0	0	0	0	0	0	0	140-150	0	2740	100,100
160	0	0	0	0	0	0	0	0	150-160	0	2740	100,100
170	0	0	0	0	0	0	0	0	160-170	0	2740	100,100
180	0	0	0	0	0	0	0	0	170-180	0	2740	100,100
DEG	LUMINOUS INTENSITY:cd									UNIT:lm		

Conical surface Flux(90deg): 1425.9 lm

%lum = 52.0%
 %lamp = 52.0%

Conical surface Flux(120deg): 2114.2 lm

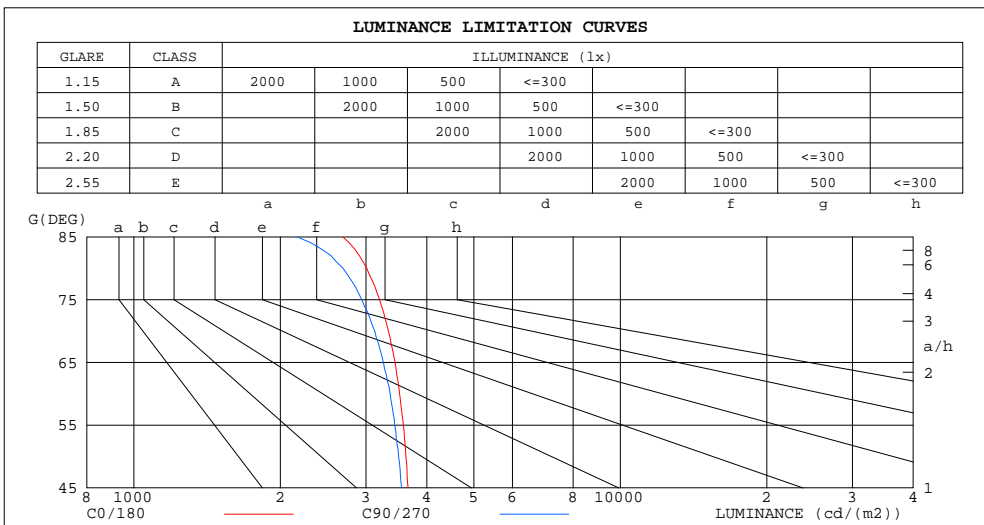
%lum = 77.2%
 %lamp = 77.2%

C Range: 0 - 360DEG
 C Interval: 22.5DEG
 Test Speed: HIGH
 Temperature:25.2DEG
 Operators:Water
 Test Date:2024-08-28

γ Range: 0 - 180DEG
 γ Interval: 1.0DEG
 Test System:EVERFINE GO-R5000_V2 SYSTEM V2.00.446
 Humidity:48%
 Test Distance:2.519m [K=1.0000]
 Remarks:

LUMINANCE LIMITATION CURVES

Test:U:120.08V I:0.3302A P:38.090W PF:0.9606 Freq:60.00Hz Lamp Flux:2740.07x1 lm		
NAME: ASD-MPR-24D38WH 5000K	TYPE: N/A	WEIGHT: N/A
SPEC.:LED Luminaires	DIM.: N/A	SERIAL No.: N/A
MFR.: ASD Lighting Corp	SUR.: N/A	Shielding Angle: N/A



LUMINANCE cd/(m2)		
G (DEG)	C0/180	C90/270
85	2691	2168
80	3011	2691
75	3199	2941
70	3335	3127
65	3444	3258
60	3518	3364
55	3582	3440
50	3624	3503
45	3662	3552

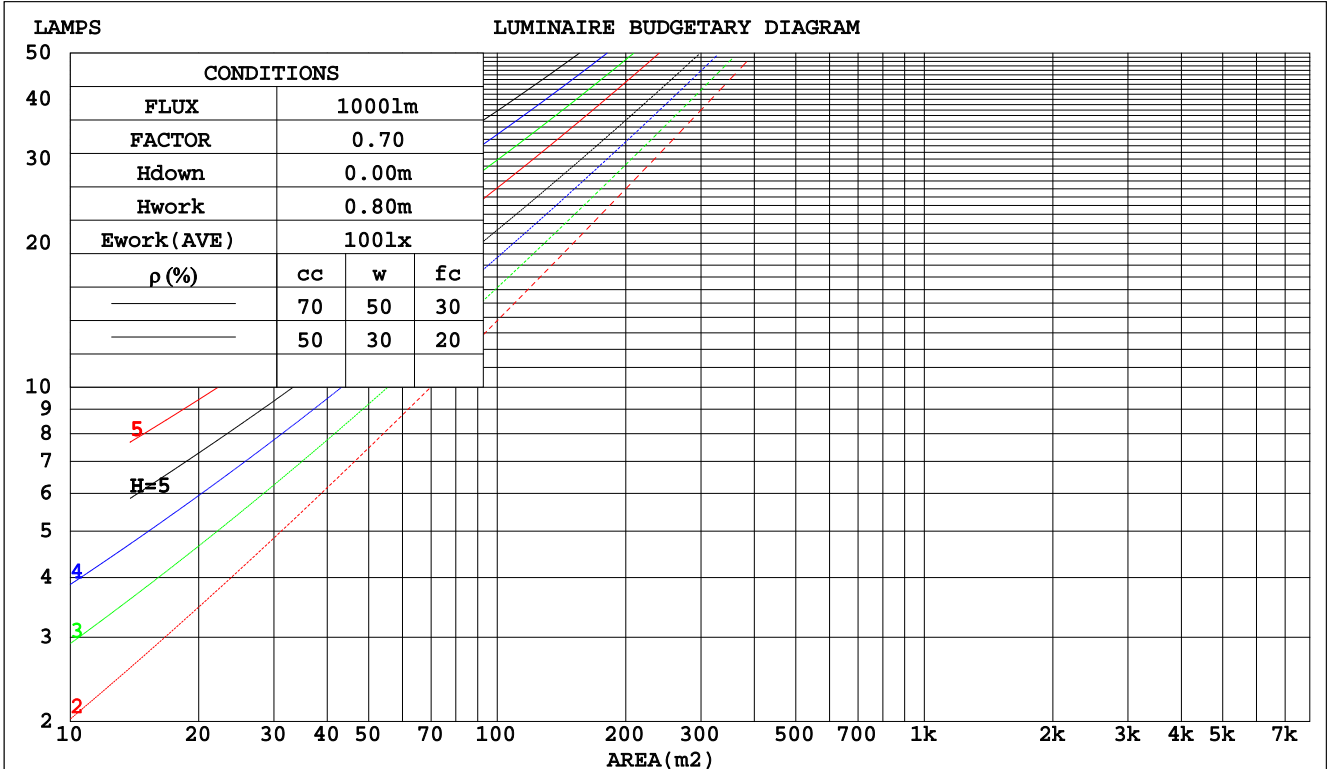
C Range: 0 - 360DEG
 C Interval: 22.5DEG
 Test Speed: HIGH
 Temperature: 25.2DEG
 Operators: Water
 Test Date: 2024-08-28

γ Range: 0 - 180DEG
 γ Interval: 1.0DEG
 Test System: EVERFINE GO-R5000_V2 SYSTEM V2.00.446
 Humidity: 48%
 Test Distance: 2.519m [K=1.0000]
 Remarks:

CU AND LUMINAIRE BUDGETARY ESTIMATE DIAGRAM

Test:U:120.08V I:0.3302A P:38.090W PF:0.9606 Freq:60.00Hz Lamp Flux:2740.07x1 lm		
NAME: ASD-MPR-24D38WH 5000K	TYPE: N/A	WEIGHT: N/A
SPEC.:LED Luminaires	DIM.: N/A	SERIAL No.: N/A
MFR.: ASD Lighting Corp	SUR.: N/A	Shielding Angle: N/A

pcc	80%			70%			50%			30%			10%			0
	50%	30%	10%	50%	30%	10%	50%	30%	10%	50%	30%	10%	50%	30%	10%	0
pw																0
pfc	20%			20%			20%			20%			20%			0
RCR	RCR:Room Cavity Ratio Coefficients of Utilization(CU)															
0.0	1.19	1.19	1.19	1.16	1.16	1.16	1.11	1.11	1.11	1.06	1.06	1.06	1.02	1.02	1.02	1.00
1.0	1.03	.99	.95	1.01	.97	.93	.97	.93	.90	.93	.90	.88	.89	.87	.85	.83
2.0	.90	.83	.77	.88	.81	.76	.84	.79	.74	.81	.76	.72	.78	.74	.71	.68
3.0	.79	.70	.63	.77	.69	.63	.74	.67	.62	.71	.65	.61	.69	.64	.60	.57
4.0	.69	.60	.54	.68	.60	.53	.66	.58	.52	.63	.57	.52	.61	.55	.51	.49
5.0	.62	.53	.46	.61	.52	.46	.59	.51	.45	.57	.50	.45	.55	.49	.44	.42
6.0	.56	.47	.40	.55	.46	.40	.53	.45	.39	.51	.44	.39	.50	.43	.39	.37
7.0	.50	.41	.35	.50	.41	.35	.48	.40	.35	.47	.40	.35	.45	.39	.34	.32
8.0	.46	.37	.31	.45	.37	.31	.44	.36	.31	.43	.36	.31	.41	.35	.31	.29
9.0	.42	.34	.28	.42	.34	.28	.40	.33	.28	.39	.33	.28	.38	.32	.28	.26
10.0	.39	.31	.26	.38	.31	.25	.37	.30	.25	.36	.30	.25	.35	.29	.25	.23



C Range: 0 - 360DEG
 C Interval: 22.5DEG
 Test Speed: HIGH
 Temperature:25.2DEG
 Operators:Water
 Test Date:2024-08-28

γ Range: 0 - 180DEG
 γ Interval: 1.0DEG
 Test System:EVERFINE GO-R5000_V2 SYSTEM V2.00.446
 Humidity:48%
 Test Distance:2.519m [K=1.0000]
 Remarks:

WEC AND CCEC

Test:U:120.08V I:0.3302A P:38.090W PF:0.9606 Freq:60.00Hz		
Lamp Flux:2740.07x1 lm		
NAME:ASD-MPR-24D38WH 5000K	TYPE: N/A	WEIGHT: N/A
SPEC.:LED Luminaires	DIM.: N/A	SERIAL No.: N/A
MFR.: ASD Lighting Corp	SUR.: N/A	Shielding Angle: N/A

ρcc	80%			70%			50%			30%			10%			0
ρw	50%	30%	10%	50%	30%	10%	50%	30%	10%	50%	30%	10%	50%	30%	10%	0
ρfc	20%			20%			20%			20%			20%			0
RCR	RCR:Room Cavity Ratio						Wall Exitance Coefficients(WEC)									
0.0																
1.0	.320	.182	.058	.313	.178	.057	.299	.172	.055	.287	.166	.053	.276	.160	.052	
2.0	.299	.164	.050	.293	.161	.050	.281	.156	.049	.270	.151	.047	.260	.147	.046	
3.0	.275	.147	.044	.270	.145	.044	.259	.141	.043	.250	.137	.042	.241	.133	.041	
4.0	.253	.132	.039	.248	.130	.038	.239	.127	.038	.231	.124	.037	.223	.121	.037	
5.0	.234	.119	.034	.229	.118	.034	.221	.115	.034	.214	.113	.034	.206	.110	.033	
6.0	.216	.108	.031	.212	.107	.031	.205	.105	.031	.198	.103	.030	.192	.101	.030	
7.0	.201	.099	.028	.198	.098	.028	.191	.097	.028	.185	.095	.028	.179	.093	.027	
8.0	.188	.092	.026	.184	.091	.026	.179	.089	.025	.173	.088	.025	.168	.086	.025	
9.0	.176	.085	.024	.173	.084	.024	.168	.083	.023	.163	.082	.023	.158	.080	.023	
10.0	.165	.079	.022	.162	.078	.022	.158	.077	.022	.153	.076	.022	.149	.075	.022	

ρcc	80%			70%			50%			30%			10%			0
ρw	50%	30%	10%	50%	30%	10%	50%	30%	10%	50%	30%	10%	50%	30%	10%	0
ρfc	20%			20%			20%			20%			20%			0
RCR	RCR:Room Cavity Ratio						Ceiling Cavity Exitance Coefficients(CCEC)									
0.0	.190	.190	.190	.163	.163	.163	.111	.111	.111	.064	.064	.064	.020	.020	.020	
1.0	.181	.156	.134	.155	.134	.115	.106	.092	.079	.061	.053	.046	.020	.017	.015	
2.0	.173	.132	.097	.148	.114	.084	.102	.079	.059	.059	.046	.034	.019	.015	.011	
3.0	.166	.114	.074	.142	.099	.064	.097	.069	.045	.056	.040	.026	.018	.013	.009	
4.0	.158	.101	.058	.135	.087	.050	.093	.061	.035	.054	.036	.021	.017	.012	.007	
5.0	.150	.091	.047	.129	.078	.041	.089	.055	.029	.052	.032	.017	.017	.011	.006	
6.0	.143	.082	.039	.123	.071	.034	.085	.050	.024	.049	.029	.014	.016	.010	.005	
7.0	.136	.075	.033	.117	.065	.029	.081	.046	.020	.047	.027	.012	.015	.009	.004	
8.0	.130	.070	.028	.112	.060	.025	.077	.042	.018	.045	.025	.010	.015	.008	.003	
9.0	.124	.065	.025	.106	.056	.022	.074	.039	.015	.043	.023	.009	.014	.008	.003	
10.0	.118	.060	.022	.102	.052	.019	.070	.037	.014	.041	.022	.008	.013	.007	.003	

C Range: 0 - 360DEG
 C Interval: 22.5DEG
 Test Speed: HIGH
 Temperature:25.2DEG
 Operators:Water
 Test Date:2024-08-28

γ Range: 0 - 180DEG
 γ Interval: 1.0DEG
 Test System:EVERFINE GO-R5000_V2 SYSTEM V2.00.446
 Humidity:48%
 Test Distance:2.519m [K=1.0000]
 Remarks:

UGR(Unified Glare Rating) Table

Test:U:120.08V I:0.3302A P:38.090W PF:0.9606 Freq:60.00Hz Lamp Flux:2740.07x1 lm		
NAME:ASD-MPR-24D38WH 5000K	TYPE: N/A	WEIGHT: N/A
SPEC.:LED Luminaires	DIM.: N/A	SERIAL No.: N/A
MFR.: ASD Lighting Corp	SUR.: N/A	Shielding Angle: N/A

ceiling/cavity	0.7	0.7	0.5	0.5	0.3	0.7	0.7	0.5	0.5	0.3
walls	0.5	0.3	0.5	0.3	0.3	0.5	0.3	0.5	0.3	0.3
working plane	0.2	0.2	0.2	0.2	0.2	0.2	0.2	0.2	0.2	0.2
Room dimensions	Viewed crosswise					Viewed endwise				
x = 2H y = 2H	13.9	15.4	14.1	15.6	15.8	13.7	15.2	13.9	15.4	15.6
3H	15.5	16.9	15.8	17.2	17.4	15.2	16.7	15.5	16.9	17.1
4H	16.2	17.5	16.5	17.8	18.1	15.9	17.2	16.2	17.5	17.8
6H	16.7	18.0	17.0	18.3	18.5	16.4	17.6	16.7	17.9	18.2
8H	16.9	18.1	17.2	18.4	18.7	16.5	17.7	16.8	18.0	18.3
12H	17.0	18.2	17.4	18.5	18.8	16.6	17.8	16.9	18.1	18.4
4H 2H	14.5	15.8	14.8	16.1	16.4	14.3	15.7	14.6	15.9	16.2
3H	16.3	17.5	16.7	17.8	18.1	16.1	17.3	16.5	17.6	17.9
4H	17.1	18.2	17.5	18.5	18.9	16.9	18.0	17.2	18.3	18.6
6H	17.8	18.8	18.2	19.1	19.5	17.5	18.4	17.9	18.8	19.2
8H	18.0	18.9	18.5	19.3	19.7	17.7	18.6	18.1	19.0	19.3
12H	18.2	19.0	18.6	19.4	19.8	17.8	18.6	18.2	19.0	19.4
8H 4H	17.4	18.3	17.8	18.7	19.1	17.2	18.1	17.6	18.5	18.9
6H	18.3	19.0	18.7	19.4	19.8	18.0	18.7	18.4	19.1	19.5
8H	18.6	19.3	19.1	19.7	20.1	18.3	18.9	18.7	19.4	19.8
12H	18.9	19.4	19.3	19.9	20.4	18.5	19.0	18.9	19.5	20.0
12H 4H	17.4	18.3	17.9	18.7	19.1	17.2	18.1	17.6	18.4	18.8
6H	18.3	19.0	18.8	19.4	19.9	18.0	18.7	18.5	19.1	19.6
8H	18.7	19.3	19.2	19.7	20.2	18.4	19.0	18.9	19.4	19.9
Variations with the observer position at spacings(CIE Pub.117):										
S = 1.0H	+ 0.1 / - 0.2					+ 0.1 / - 0.2				
1.5H	+ 0.2 / - 0.3					+ 0.2 / - 0.3				
2.0H	+ 0.1 / - 0.3					+ 0.1 / - 0.3				

CIE Pub.117, 2740 lm Total Lamp Luminous Flux Correct (8log(F/F0) = 3.5)
Area: 0.246176 m2

C Range: 0 - 360DEG
C Interval: 22.5DEG
Test Speed: HIGH
Temperature:25.2DEG
Operators:Water
Test Date:2024-08-28

γ Range: 0 - 180DEG
γ Interval: 1.0DEG
Test System:EVERFINE GO-R5000_V2 SYSTEM V2.00.446
Humidity:48%
Test Distance:2.519m [K=1.0000]
Remarks:

UTILIZATION FACTORS TABLE

Test:U:120.08V I:0.3302A P:38.090W PF:0.9606 Freq:60.00Hz Lamp Flux:2740.07x1 lm		
NAME:ASD-MPR-24D38WH 5000K	TYPE: N/A	WEIGHT: N/A
SPEC.:LED Luminaires	DIM.: N/A	SERIAL No.: N/A
MFR.: ASD Lighting Corp	SUR.: N/A	Shielding Angle: N/A

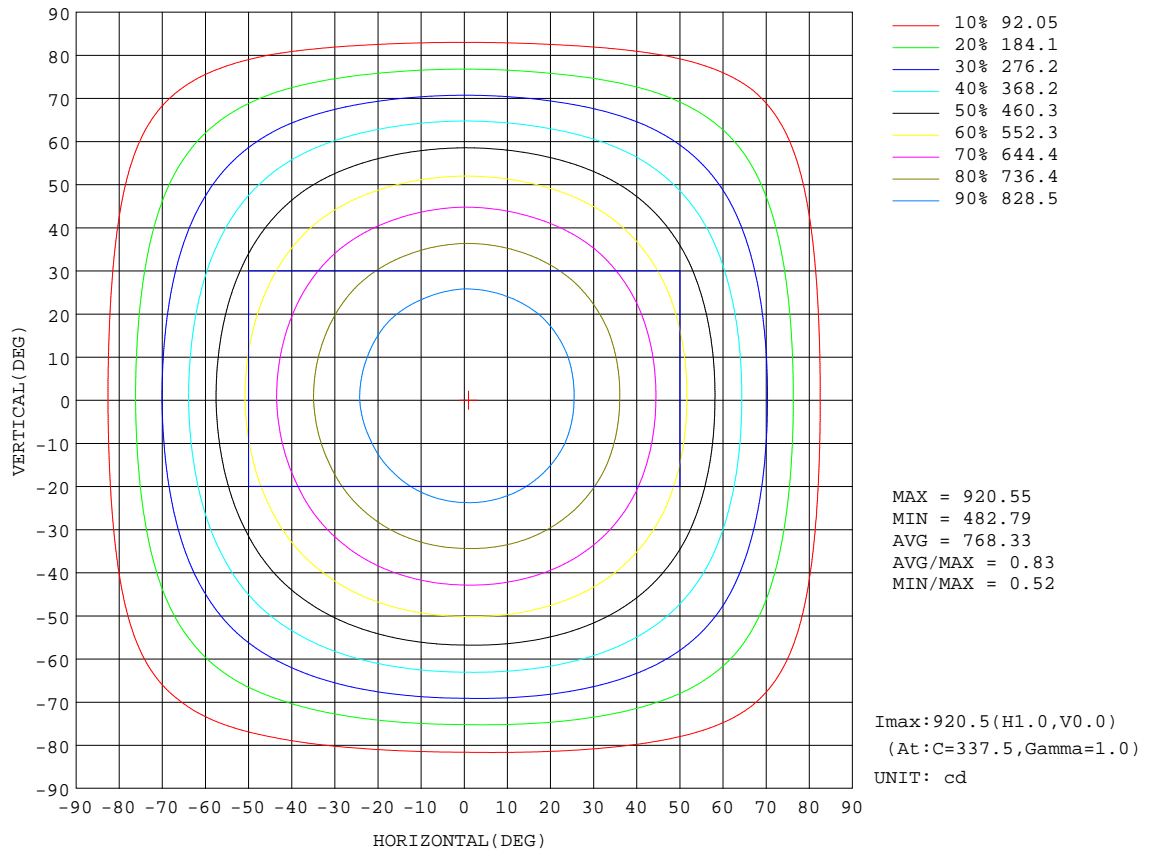
REFLECTANCE										
Ceiling	0.8	0.8	0.8	0.7	0.7	0.7	0.5	0.5	0.5	0
Walls	0.7	0.5	0.3	0.7	0.5	0.3	0.7	0.5	0.3	0
Working plane	0.2	0.2	0.2	0.2	0.2	0.2	0.2	0.2	0.2	0
ROOM INDEX	UTILIZATION FACTORS(PERCENT) k(RI) x RCR = 5									
k = 0.60	57	45	38	56	45	38	55	44	38	31
0.80	67	55	47	66	54	47	64	54	47	40
1.00	75	64	56	74	63	56	72	65	55	48
1.25	82	71	64	81	71	64	78	69	63	56
1.50	87	77	70	86	76	69	83	74	68	61
2.00	94	85	79	92	84	78	89	82	77	69
2.50	98	90	84	96	89	83	92	86	81	73
3.00	102	95	89	99	93	88	95	90	86	77
4.00	106	100	95	103	98	94	99	95	91	82
5.00	108	103	99	106	101	97	101	98	94	85
ROOM INDEX	UF(total)									Direct
According to DIN EN 13032-2 2004			Suspended				SHRNOM = 1.25			

C Range: 0 - 360DEG
 C Interval: 22.5DEG
 Test Speed: HIGH
 Temperature:25.2DEG
 Operators:Water
 Test Date:2024-08-28

γ Range: 0 - 180DEG
 γ Interval: 1.0DEG
 Test System:EVERFINE GO-R5000_V2 SYSTEM V2.00.446
 Humidity:48%
 Test Distance:2.519m [K=1.0000]
 Remarks:

ISOCANDELA DIAGRAM

Test:U:120.08V I:0.3302A P:38.090W PF:0.9606 Freq:60.00Hz Lamp Flux:2740.07x1 lm		
NAME: ASD-MPR-24D38WH 5000K	TYPE: N/A	WEIGHT: N/A
SPEC.:LED Luminaires	DIM.: N/A	SERIAL No.: N/A
MFR.: ASD Lighting Corp	SUR.: N/A	Shielding Angle: N/A



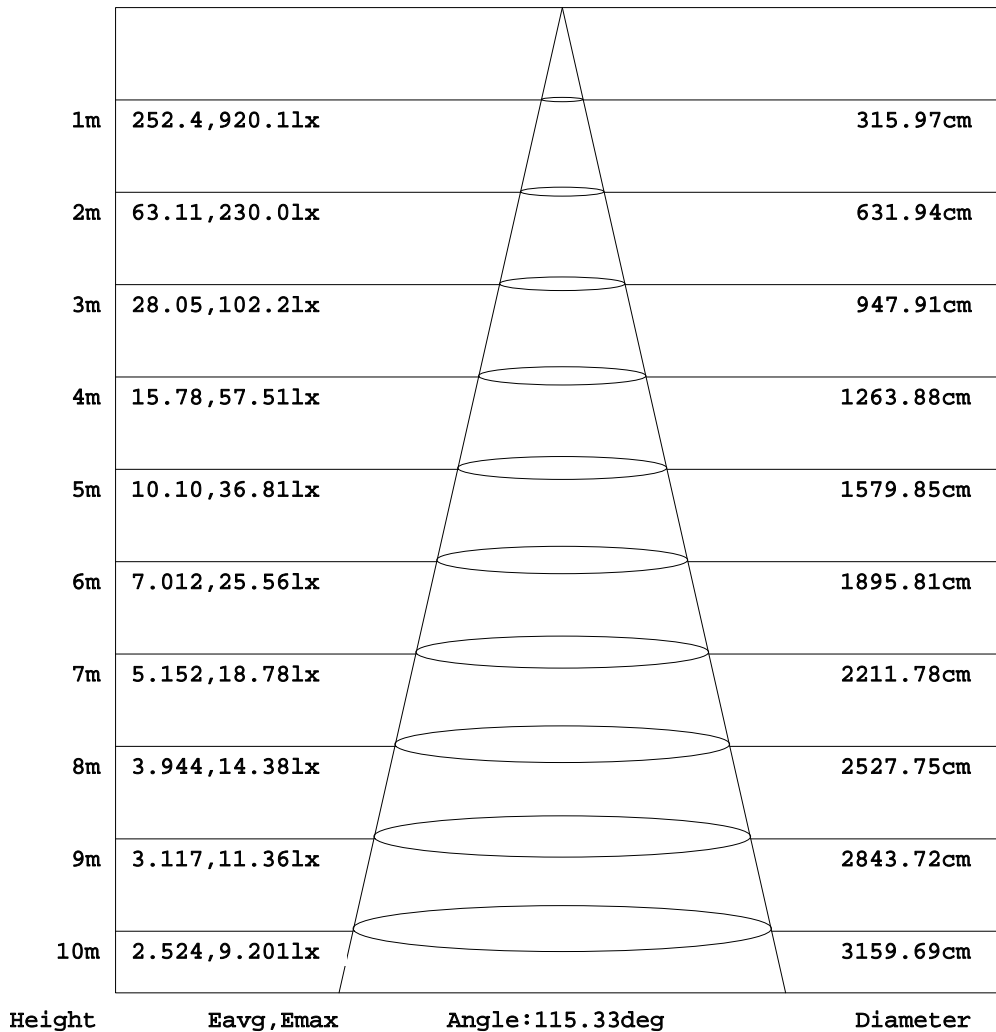
C Range: 0 - 360DEG
 C Interval: 22.5DEG
 Test Speed: HIGH
 Temperature: 25.2DEG
 Operators: Water
 Test Date: 2024-08-28

γ Range: 0 - 180DEG
 γ Interval: 1.0DEG
 Test System: EVERFINE GO-R5000_V2 SYSTEM V2.00.446
 Humidity: 48%
 Test Distance: 2.519m [K=1.0000]
 Remarks:

AAI Figure

Test:U:120.08V I:0.3302A P:38.090W PF:0.9606 Freq:60.00Hz Lamp Flux:2740.07x1 lm		
NAME: ASD-MPR-24D38WH 5000K	TYPE: N/A	WEIGHT: N/A
SPEC.:LED Luminaires	DIM.: N/A	SERIAL No.: N/A
MFR.: ASD Lighting Corp	SUR.: N/A	Shielding Angle: N/A

Flux out:2031 lm



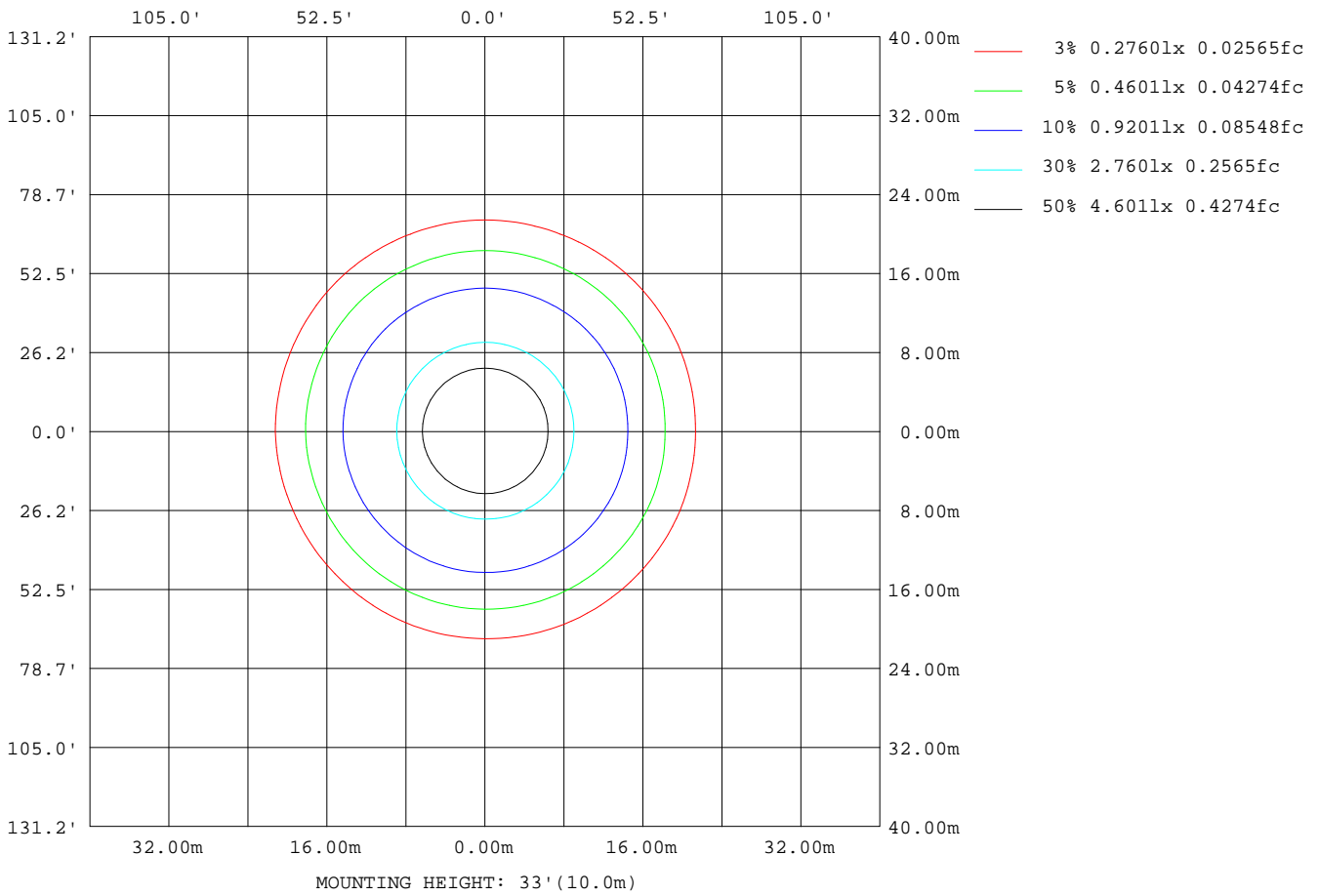
Note:The Curves indicate the illuminated area and the average illumination when the luminaire is at different distance.

C Range: 0 - 360DEG
 C Interval: 22.5DEG
 Test Speed: HIGH
 Temperature:25.2DEG
 Operators:Water
 Test Date:2024-08-28

γ Range: 0 - 180DEG
 γ Interval: 1.0DEG
 Test System:EVERFINE GO-R5000_V2 SYSTEM V2.00.446
 Humidity:48%
 Test Distance:2.519m [K=1.0000]
 Remarks:

ISOLUX DIAGRAM

Test:U:120.08V I:0.3302A P:38.090W PF:0.9606 Freq:60.00Hz Lamp Flux:2740.07x1 lm		
NAME:ASD-MPR-24D38WH 5000K	TYPE: N/A	WEIGHT: N/A
SPEC.: LED Luminaires	DIM.: N/A	SERIAL No.: N/A
MFR.: ASD Lighting Corp	SUR.: N/A	Shielding Angle: N/A



C Range: 0 - 360DEG
 C Interval: 22.5DEG
 Test Speed: HIGH
 Temperature:25.2DEG
 Operators:Water
 Test Date:2024-08-28

γ Range: 0 - 180DEG
 γ Interval: 1.0DEG
 Test System:EVERFINE GO-R5000_V2 SYSTEM V2.00.446
 Humidity:48%
 Test Distance:2.519m [K=1.0000]
 Remarks:

LED Avg.L Report

Test:U:120.08V I:0.3302A P:38.090W PF:0.9606 Freq:60.00Hz Lamp Flux:2740.07x1 lm		
NAME:ASD-MPR-24D38WH 5000K	TYPE: N/A	WEIGHT: N/A
SPEC.:LED Luminaires	DIM.: N/A	SERIAL No.: N/A
MFR.: ASD Lighting Corp	SUR.: N/A	Shielding Angle: N/A

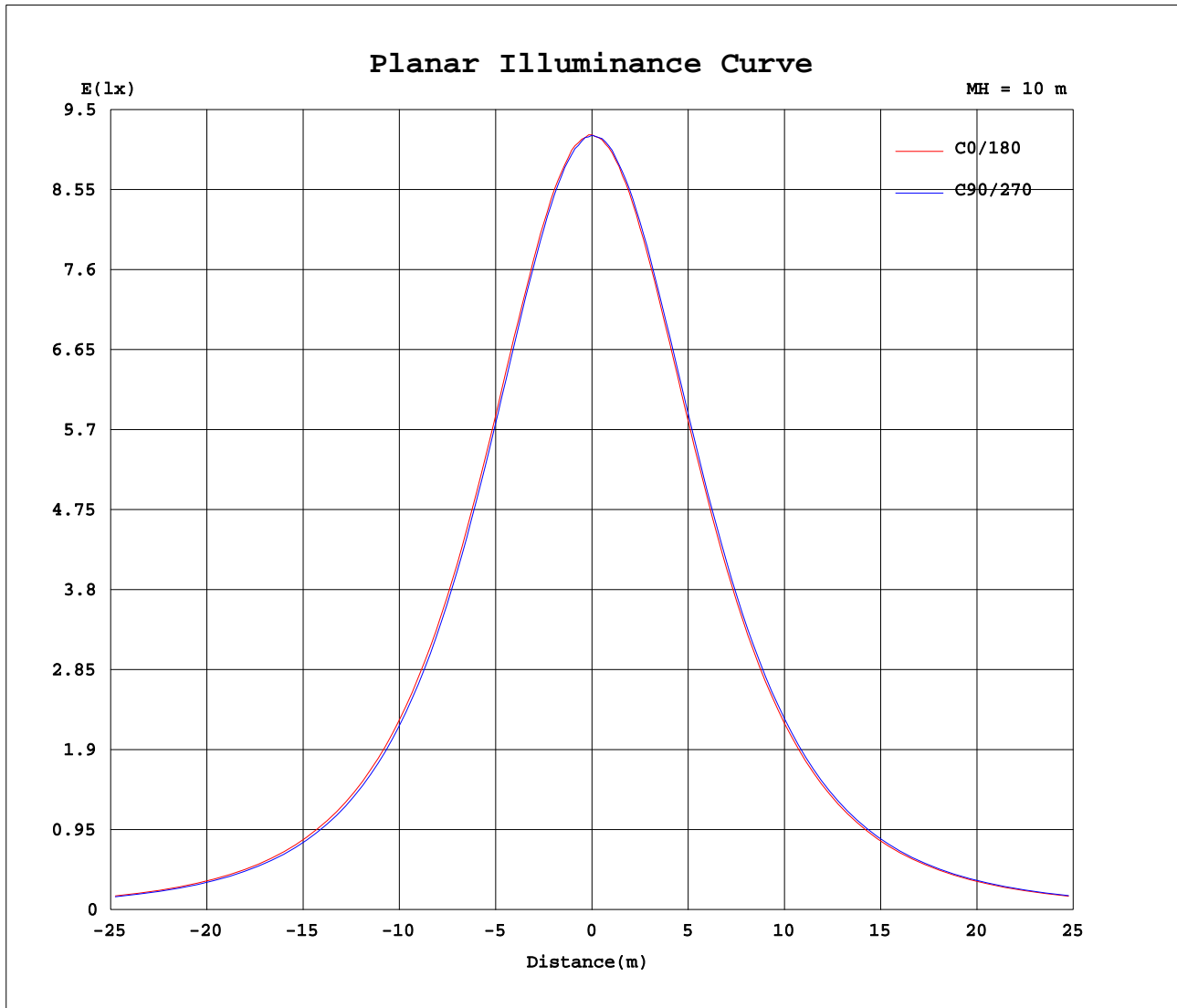
AvgL	cd/m2
L_0~180(65)av	3409
L_0~180(75)av	3180
L_0~180(85)av	2739
L_90~270(65)av	3378
L_90~270(75)av	3124
L_90~270(85)av	2568
L_45(65)av	3394
L_45(75)av	3156
L_45(85)av	2689

Standard: GB/T 29293-2012

C Range: 0 - 360DEG
 C Interval: 22.5DEG
 Test Speed: HIGH
 Temperature:25.2DEG
 Operators:Water
 Test Date:2024-08-28

γ Range: 0 - 180DEG
 γ Interval: 1.0DEG
 Test System:EVERFINE GO-R5000_V2 SYSTEM V2.00.446
 Humidity:48%
 Test Distance:2.519m [K=1.0000]
 Remarks:

Planar Illuminance Curve



C Range: 0 - 360DEG
 C Interval: 22.5DEG
 Test Speed: HIGH
 Temperature: 25.2DEG
 Operators: Water
 Test Date: 2024-08-28

γ Range: 0 - 180DEG
 γ Interval: 1.0DEG
 Test System: EVERFINE GO-R5000_V2 SYSTEM V2.00.446
 Humidity: 48%
 Test Distance: 2.519m [K=1.0000]
 Remarks:

LUMINOUS DISTRIBUTION INTENSITY DATA

Test:U:120.08V I:0.3302A P:38.090W PF:0.9606 Freq:60.00Hz Lamp Flux:2740.07x1 lm		
NAME:ASD-MPR-24D38WH 5000K	TYPE: N/A	WEIGHT: N/A
SPEC.: LED Luminaires	DIM.: N/A	SERIAL No.: N/A
MFR.: ASD Lighting Corp	SUR.: N/A	Shielding Angle: N/A

Table--1

UNIT: cd

C(DEG) γ (DEG)	0	22.5	45	67.5	90	112.5	135	157.5	180	202.5	225	247.5	270	292.5	315	337.5			
0	919	919	919	919	919	919	919	919	919	919	919	919	919	919	919	919			
5	917	916	914	915	914	914	913	914	914	915	915	916	917	918	918	918			
10	906	906	904	903	901	901	900	901	902	902	905	907	907	909	909	909			
15	890	889	886	884	881	880	880	880	883	884	886	889	890	890	893	892			
20	863	863	860	858	854	853	850	853	855	858	861	862	865	867	867	868			
25	831	830	825	823	820	818	816	818	821	824	829	831	834	835	836	836			
30	792	791	786	782	778	775	774	777	783	784	789	792	795	796	797	799			
35	745	745	740	736	730	729	727	729	735	738	743	746	750	751	753	754			
40	694	693	687	683	676	675	674	676	684	686	692	695	699	700	703	702			
45	637	635	629	625	618	616	614	618	625	629	635	638	641	641	644	644			
50	573	572	566	561	554	553	551	554	563	566	572	575	578	578	582	580			
55	505	504	498	493	486	483	482	486	496	499	505	507	510	511	513	513			
60	433	433	426	421	414	411	411	415	426	428	434	436	439	439	441	441			
65	358	358	351	346	339	337	336	340	351	355	360	362	364	364	366	365			
70	281	281	275	270	263	262	260	266	277	279	285	286	287	286	288	288			
75	204	204	199	194	187	187	185	191	202	204	209	209	211	209	212	210			
80	129	129	124	120	115	113	114	118	128	131	135	135	136	135	136	135			
85	57.7	57.9	53.9	51.0	46.5	46.8	47.1	51.3	59.9	61.4	64.3	63.2	63.7	63.5	65.4	64.3			
90	0.00	0.00	0.00	0.00	0.00	0.00	0.00	0.00	0.00	0.00	0.00	0.00	0.00	0.00	0.00	0.00			
95	0.00	0.00	0.00	0.00	0.00	0.00	0.00	0.00	0.00	0.00	0.00	0.00	0.00	0.00	0.00	0.00			
100	0.00	0.00	0.00	0.00	0.00	0.00	0.00	0.00	0.00	0.00	0.00	0.00	0.00	0.00	0.00	0.00			
105	0.00	0.00	0.00	0.00	0.00	0.00	0.00	0.00	0.00	0.00	0.00	0.00	0.00	0.00	0.00	0.00			
110	0.00	0.00	0.00	0.00	0.00	0.00	0.00	0.00	0.00	0.00	0.00	0.00	0.00	0.00	0.00	0.00			
115	0.00	0.00	0.00	0.00	0.00	0.00	0.00	0.00	0.00	0.00	0.00	0.00	0.00	0.00	0.00	0.00			
120	0.00	0.00	0.00	0.00	0.00	0.00	0.00	0.00	0.00	0.00	0.00	0.00	0.00	0.00	0.00	0.00			
125	0.00	0.00	0.00	0.00	0.00	0.00	0.00	0.00	0.00	0.00	0.00	0.00	0.00	0.00	0.00	0.00			
130	0.00	0.00	0.00	0.00	0.00	0.00	0.00	0.00	0.00	0.00	0.00	0.00	0.00	0.00	0.00	0.00			
135	0.00	0.00	0.00	0.00	0.00	0.00	0.00	0.00	0.00	0.00	0.00	0.00	0.00	0.00	0.00	0.00			
140	0.00	0.00	0.00	0.00	0.00	0.00	0.00	0.00	0.00	0.00	0.00	0.00	0.00	0.00	0.00	0.00			
145	0.00	0.00	0.00	0.00	0.00	0.00	0.00	0.00	0.00	0.00	0.00	0.00	0.00	0.00	0.00	0.00			
150	0.00	0.00	0.00	0.00	0.00	0.00	0.00	0.00	0.00	0.00	0.00	0.00	0.00	0.00	0.00	0.00			
155	0.00	0.00	0.00	0.00	0.00	0.00	0.00	0.00	0.00	0.00	0.00	0.00	0.00	0.00	0.00	0.00			
160	0.00	0.00	0.00	0.00	0.00	0.00	0.00	0.00	0.00	0.00	0.00	0.00	0.00	0.00	0.00	0.00			
165	0.00	0.00	0.00	0.00	0.00	0.00	0.00	0.00	0.00	0.00	0.00	0.00	0.00	0.00	0.00	0.00			
170	0.00	0.00	0.00	0.00	0.00	0.00	0.00	0.00	0.00	0.00	0.00	0.00	0.00	0.00	0.00	0.00			
175	0.00	0.00	0.00	0.00	0.00	0.00	0.00	0.00	0.00	0.00	0.00	0.00	0.00	0.00	0.00	0.00			
180	0.00	0.00	0.00	0.00	0.00	0.00	0.00	0.00	0.00	0.00	0.00	0.00	0.00	0.00	0.00	0.00			

C Range: 0 - 360DEG
 C Interval: 22.5DEG
 Test Speed: HIGH
 Temperature:25.2DEG
 Operators:Water
 Test Date:2024-08-28

γ Range: 0 - 180DEG
 γ Interval: 1.0DEG
 Test System:EVERFINE GO-R5000_V2 SYSTEM V2.00.446
 Humidity:48%
 Test Distance:2.519m [K=1.0000]
 Remarks: