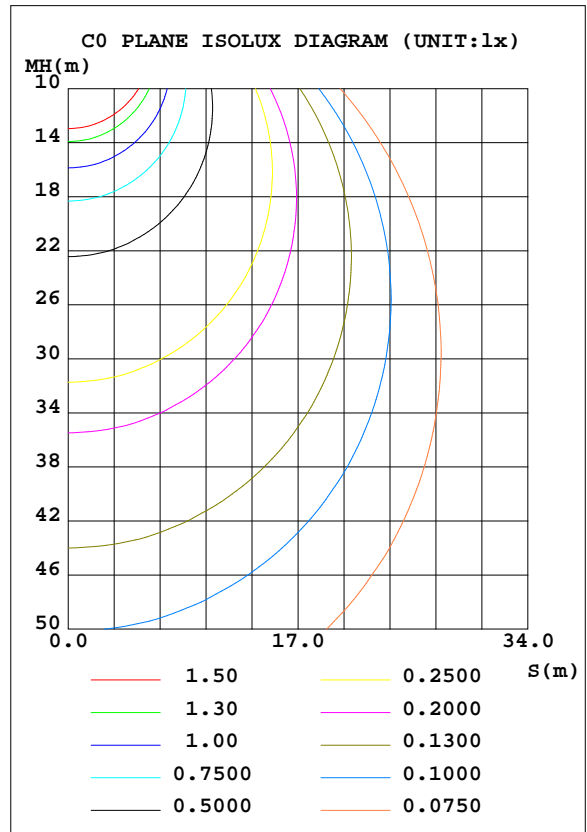
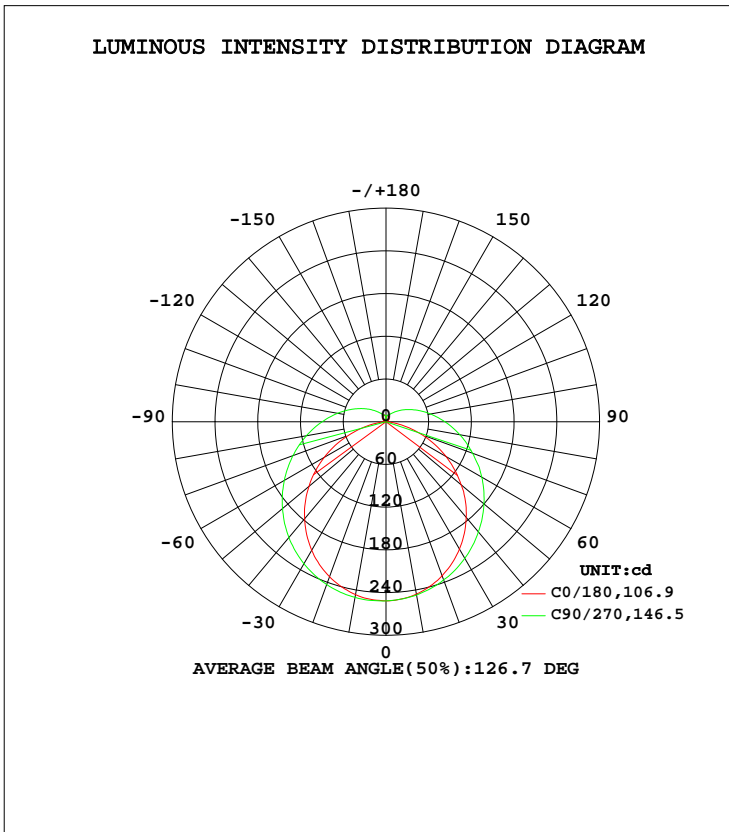


LUMINAIRE PHOTOMETRIC TEST REPORT

Test:U:120.1V I:0.1335A P:15.36W PF:0.9582 Lamp Flux:1000.18x1 lm		
NAME: LED Luminaires	TYPE:N/A	WEIGHT:N/A
SPEC.:N/A	DIM.: N/A	SERIAL No.:N/A
MFR.: RISING-SUN	SUR.:N/A	Shielding Angle:N/A

DATA OF LAMP		PHOTOMETRIC DATA			
MODEL	PSZ2S221111001-10	Imax(cd)	252.1	S/MH(C0/180)	1.23
NOMINAL POWER(W)		LOR(%)	100.0	S/MH(C90/270)	1.32
RATED VOLTAGE(V)	120	TOTAL FLUX(lm)	1000.2	η UP, DN(C0-180)	7.2,44.0
NOMINAL FLUX(lm)	1000.18	CIE CLASS	SEMI-D.	η UP, DN(C180-360)	6.7,42.2
LAMPS INSIDE	1	η up(%)	13.9	CIBSE SHR NOM	1.50
TEST VOLTAGE(V)	120	η down(%)	86.1	CIBSE SHR MAX	1.50



C Range: 0 - 360DEG
 C Interval: 22.5DEG
 Test Speed: HIGH
 Temperature:24.3DEG
 Operators:Carl
 Test Date:2022-12-09

γ Range: 0 - 180DEG
 γ Interval: 1.0DEG
 Test System:EVERFINE GO-R5000_V2 SYSTEM V2.0.351
 Humidity:48%
 Test Distance:2.532m [K=1.0000]
 Remarks:

ZONAL FLUX DIAGRAM

ZONAL FLUX DIAGRAM:

γ	C0	C45	C90	C135	C180	C225	C270	C315	γ	Φ zone	Φ total	%lum,lamp
10	246.5	249.1	250.4	248.6	245.8	245.9	247.1	246.4	0- 10	23.82	23.82	2.38,2.38
20	231.8	238.3	243.3	237.5	230.4	232.8	236.5	233.9	10- 20	68.46	92.28	9.23,9.23
30	208.6	220.4	230.5	219.2	206.4	212.8	221.5	214.4	20- 30	104.7	196.9	19.7,19.7
40	177.9	196.2	212.1	195.1	175.5	187.7	202.0	189.5	30- 40	128.3	325.3	32.5,32.5
50	141.4	167.6	189.7	166.4	137.6	159.0	179.5	161.3	40- 50	137.4	462.6	46.3,46.3
60	100.3	136.8	165.0	135.7	97.08	127.9	155.3	130.0	50- 60	131.7	594.3	59.4,59.4
70	56.67	106.1	139.0	105.6	54.32	98.50	129.5	100.4	60- 70	114.0	708.3	70.8,70.8
80	17.64	78.34	113.4	78.18	16.17	72.17	105.3	73.67	70- 80	88.96	797.3	79.7,79.7
90	0.0751	55.04	89.81	55.40	0.0449	50.67	82.73	51.55	80- 90	63.91	861.2	86.1,86.1
100	0.5399	38.23	69.11	38.88	0.5792	35.20	63.54	35.66	90-100	45.17	906.3	90.6,90.6
110	2.100	26.55	51.27	27.24	2.107	24.72	47.38	24.90	100-110	31.72	938.1	93.8,93.8
120	3.870	18.90	37.18	19.50	3.778	18.01	34.47	18.06	110-120	21.99	960.0	96,96
130	5.650	14.19	26.23	14.59	5.459	13.71	24.77	13.90	120-130	15.06	975.1	97.5,97.5
140	7.379	11.36	18.36	11.62	7.018	10.91	17.57	11.60	130-140	10.23	985.3	98.5,98.5
150	8.748	9.826	13.33	10.04	8.395	9.266	12.80	10.34	140-150	6.908	992.2	99.2,99.2
160	9.804	9.435	10.51	9.257	9.112	8.725	10.19	9.725	150-160	4.571	996.8	99.7,99.7
170	8.860	8.779	9.697	9.063	7.468	8.584	9.322	9.347	160-170	2.675	999.5	99.9,99.9
180	4.126	2.713	0	3.005	4.336	3.745	2.259	2.388	170-180	0.7009	1000	100,100
DEG	LUMINOUS INTENSITY:cd									UNIT:lm		

Conical surface Flux(90deg): 393.75 lm

%lum = 39.4%
%lamp = 39.4%

Conical surface Flux(120deg): 594.33 lm

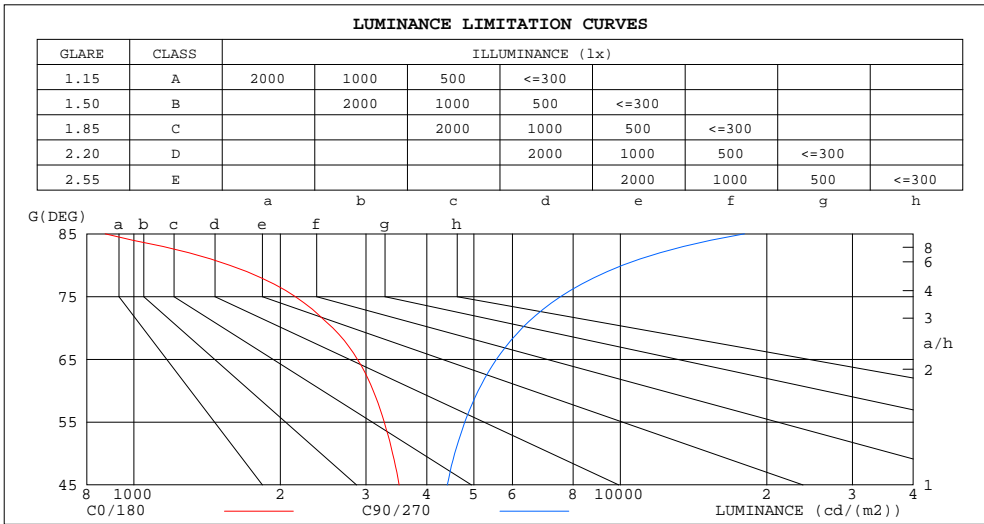
%lum = 59.4%
%lamp = 59.4%

C Range: 0 - 360DEG
C Interval: 22.5DEG
Test Speed: HIGH
Temperature:24.3DEG
Operators:Carl
Test Date:2022-12-09

γ Range: 0 - 180DEG
γ Interval: 1.0DEG
Test System:EVERFINE GO-R5000_V2 SYSTEM V2.0.351
Humidity:48%
Test Distance:2.532m [K=1.0000]
Remarks:

LUMINANCE LIMITATION CURVES

Test:U:120.1V I:0.1335A P:15.36W PF:0.9582 Lamp Flux:1000.18x1 lm		
NAME: LED Luminaires	TYPE:N/A	WEIGHT:N/A
SPEC.:N/A	DIM.: N/A	SERIAL No.:N/A
MFR.: RISING-SUN	SUR.:N/A	Shielding Angle:N/A



LUMINANCE cd/(m2)		
G (DEG)	C0/180	C90/270
85	873	17986
80	1572	10104
75	2146	7541
70	2564	6285
65	2881	5562
60	3105	5104
55	3270	4788
50	3403	4566
45	3509	4410

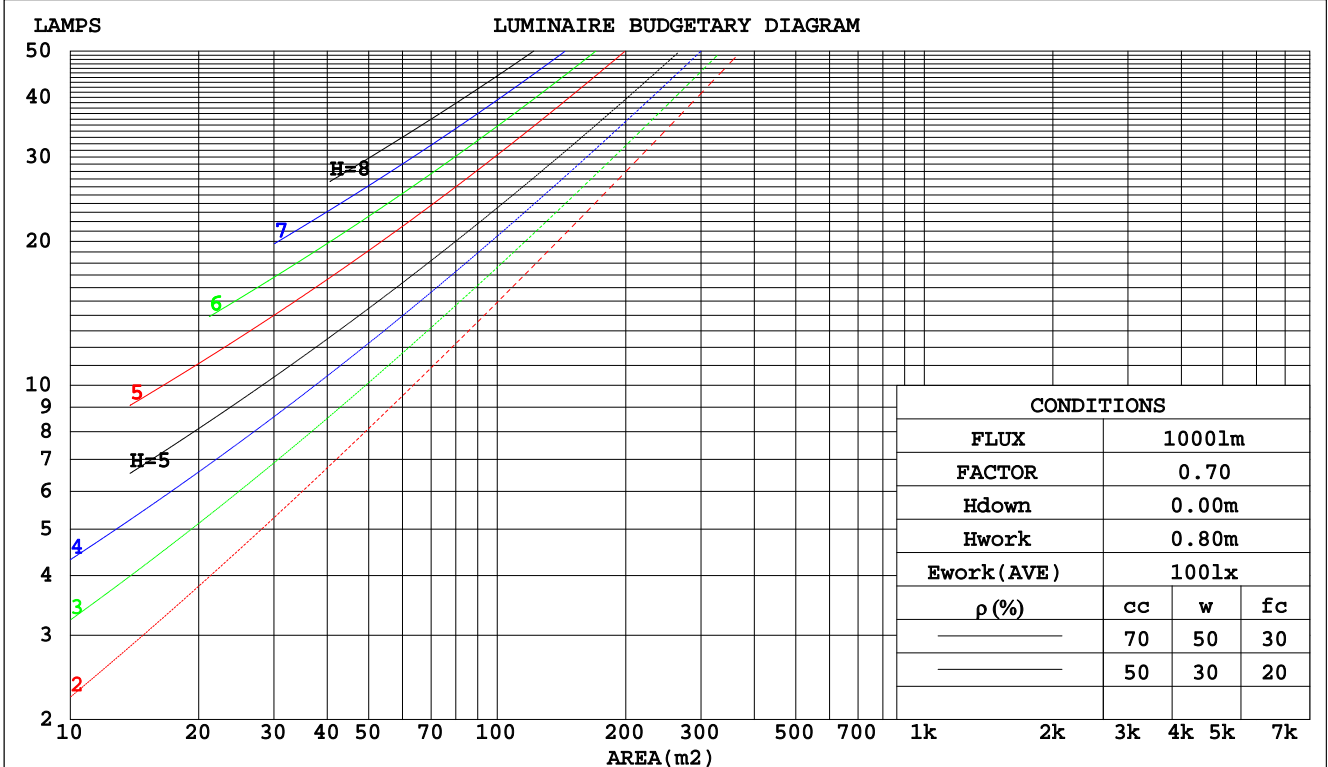
C Range: 0 - 360DEG
 C Interval: 22.5DEG
 Test Speed: HIGH
 Temperature: 24.3DEG
 Operators: Carl
 Test Date: 2022-12-09

γ Range: 0 - 180DEG
 γ Interval: 1.0DEG
 Test System: EVERFINE GO-R5000_V2 SYSTEM V2.0.351
 Humidity: 48%
 Test Distance: 2.532m [K=1.0000]
 Remarks:

CU AND LUMINAIRE BUDGETARY ESTIMATE DIAGRAM

Test:U:120.1V I:0.1335A P:15.36W PF:0.9582 Lamp Flux:1000.18x1 lm		
NAME: LED Luminaires	TYPE:N/A	WEIGHT:N/A
SPEC.:N/A	DIM.: N/A	SERIAL No.:N/A
MFR.: RISING-SUN	SUR.:N/A	Shielding Angle:N/A

pcc	80%			70%			50%			30%			10%			0
	50%	30%	10%	50%	30%	10%	50%	30%	10%	50%	30%	10%	50%	30%	10%	0
pw																0
pfc	20%			20%			20%			20%			20%			0
RCR	RCR:Room Cavity Ratio															
	Coefficients of Utilization(CU)															
0.0	1.16	1.16	1.16	1.11	1.11	1.11	1.03	1.03	1.03	.96	.96	.96	.89	.89	.89	.86
1.0	.97	.92	.88	.94	.89	.85	.87	.83	.80	.81	.78	.75	.75	.72	.70	.67
2.0	.84	.76	.70	.81	.74	.68	.75	.69	.64	.69	.65	.60	.64	.60	.57	.54
3.0	.73	.64	.57	.70	.62	.56	.65	.58	.53	.61	.55	.50	.56	.52	.48	.45
4.0	.64	.55	.48	.62	.53	.47	.58	.50	.44	.54	.47	.42	.50	.45	.40	.38
5.0	.57	.48	.41	.55	.46	.40	.51	.44	.38	.48	.41	.36	.45	.39	.35	.32
6.0	.51	.42	.35	.49	.41	.35	.46	.39	.33	.43	.37	.32	.40	.35	.30	.28
7.0	.46	.37	.31	.45	.36	.30	.42	.34	.29	.39	.33	.28	.37	.31	.27	.25
8.0	.42	.33	.27	.41	.33	.27	.38	.31	.26	.36	.30	.25	.34	.28	.24	.22
9.0	.38	.30	.24	.37	.29	.24	.35	.28	.23	.33	.27	.22	.31	.26	.22	.20
10.0	.35	.27	.22	.34	.27	.22	.32	.26	.21	.31	.25	.20	.29	.23	.20	.18



C Range: 0 - 360DEG
 C Interval: 22.5DEG
 Test Speed: HIGH
 Temperature:24.3DEG
 Operators:Carl
 Test Date:2022-12-09

γ Range: 0 - 180DEG
 γ Interval: 1.0DEG
 Test System:EVERFINE GO-R5000_V2 SYSTEM V2.0.351
 Humidity:48%
 Test Distance:2.532m [K=1.0000]
 Remarks:

WEC AND CCEC

Test:U:120.1V I:0.1335A P:15.36W PF:0.9582 Lamp Flux:1000.18x1 lm		
NAME: LED Luminaires	TYPE:N/A	WEIGHT:N/A
SPEC.:N/A	DIM.: N/A	SERIAL No.:N/A
MFR.: RISING-SUN	SUR.:N/A	Shielding Angle:N/A

ρcc	80%			70%			50%			30%			10%			0
ρw	50%	30%	10%	50%	30%	10%	50%	30%	10%	50%	30%	10%	50%	30%	10%	0
ρfc	20%			20%			20%			20%			20%			0
RCR	RCR:Room Cavity Ratio						Wall Exitance Coefficients(WEC)									
0.0																
1.0	.369	.210	.066	.358	.204	.065	.336	.193	.062	.317	.183	.059	.298	.173	.056	
2.0	.324	.178	.054	.314	.173	.053	.294	.164	.051	.277	.155	.049	.260	.147	.046	
3.0	.290	.154	.046	.281	.150	.045	.263	.143	.043	.247	.136	.042	.232	.129	.040	
4.0	.262	.136	.040	.254	.133	.039	.238	.126	.038	.224	.120	.036	.210	.114	.035	
5.0	.239	.122	.035	.232	.119	.035	.218	.113	.033	.204	.108	.032	.192	.103	.031	
6.0	.220	.110	.032	.213	.108	.031	.200	.103	.030	.188	.098	.029	.177	.093	.028	
7.0	.203	.100	.028	.197	.098	.028	.185	.094	.027	.174	.089	.026	.164	.085	.025	
8.0	.189	.092	.026	.183	.090	.025	.172	.086	.025	.162	.082	.024	.153	.078	.023	
9.0	.176	.085	.024	.171	.083	.023	.161	.080	.023	.152	.076	.022	.143	.073	.021	
10.0	.165	.079	.022	.160	.077	.022	.151	.074	.021	.142	.071	.020	.134	.068	.019	

ρcc	80%			70%			50%			30%			10%			0
ρw	50%	30%	10%	50%	30%	10%	50%	30%	10%	50%	30%	10%	50%	30%	10%	0
ρfc	20%			20%			20%			20%			20%			0
RCR	RCR:Room Cavity Ratio						Ceiling Cavity Exitance Coefficients(CCEC)									
0.0	.296	.296	.296	.253	.253	.253	.173	.173	.173	.099	.099	.099	.032	.032	.032	
1.0	.291	.262	.236	.249	.225	.203	.170	.155	.141	.098	.090	.082	.031	.029	.026	
2.0	.284	.239	.202	.243	.206	.174	.167	.142	.122	.096	.083	.071	.031	.027	.023	
3.0	.276	.222	.180	.237	.192	.156	.163	.133	.109	.094	.078	.064	.030	.025	.021	
4.0	.269	.210	.165	.231	.181	.143	.159	.126	.101	.092	.074	.060	.030	.024	.020	
5.0	.261	.200	.155	.224	.173	.135	.154	.121	.095	.089	.071	.056	.029	.023	.019	
6.0	.254	.192	.147	.218	.166	.128	.150	.116	.091	.087	.068	.054	.028	.022	.018	
7.0	.247	.185	.142	.212	.160	.124	.147	.113	.088	.085	.066	.052	.028	.022	.017	
8.0	.240	.180	.138	.207	.156	.120	.143	.109	.085	.083	.064	.051	.027	.021	.017	
9.0	.234	.175	.135	.201	.152	.118	.139	.107	.084	.081	.063	.050	.026	.021	.017	
10.0	.228	.171	.132	.196	.148	.115	.136	.104	.082	.079	.062	.049	.026	.020	.016	

C Range: 0 - 360DEG
 C Interval: 22.5DEG
 Test Speed: HIGH
 Temperature:24.3DEG
 Operators:Carl
 Test Date:2022-12-09

γ Range: 0 - 180DEG
 γ Interval: 1.0DEG
 Test System:EVERFINE GO-R5000_V2 SYSTEM V2.0.351
 Humidity:48%
 Test Distance:2.532m [K=1.0000]
 Remarks:

UGR(Unified Glare Rating) Table

Test:U:120.1V I:0.1335A P:15.36W PF:0.9582 Lamp Flux:1000.18x1 lm										
NAME: LED Luminaires					TYPE:N/A			WEIGHT:N/A		
SPEC.:N/A					DIM.: N/A			SERIAL No.:N/A		
MFR.: RISING-SUN					SUR.:N/A			Shielding Angle:N/A		
ceiling/cavity	0.7	0.7	0.5	0.5	0.3	0.7	0.7	0.5	0.5	0.3
walls	0.5	0.3	0.5	0.3	0.3	0.5	0.3	0.5	0.3	0.3
working plane	0.2	0.2	0.2	0.2	0.2	0.2	0.2	0.2	0.2	0.2
Room dimensions	Viewed crosswise					Viewed endwise				
x = 2H y = 2H	15.9	17.3	16.4	17.8	18.2	17.9	19.3	18.3	19.7	20.2
3H	17.3	18.6	17.7	19.0	19.5	20.4	21.7	20.9	22.2	22.7
4H	17.7	19.0	18.2	19.5	20.0	21.8	23.0	22.3	23.5	24.0
6H	18.0	19.2	18.5	19.7	20.3	23.3	24.4	23.8	24.9	25.5
8H	18.1	19.2	18.6	19.7	20.3	24.1	25.2	24.6	25.7	26.3
12H	18.1	19.1	18.6	19.7	20.3	25.1	26.1	25.6	26.7	27.3
4H 2H	17.0	18.2	17.5	18.7	19.2	18.4	19.6	18.9	20.1	20.7
3H	18.6	19.6	19.1	20.2	20.8	21.2	22.2	21.7	22.8	23.4
4H	19.2	20.2	19.8	20.8	21.4	22.7	23.7	23.3	24.3	24.9
6H	19.7	20.6	20.3	21.2	21.8	24.5	25.4	25.1	25.9	26.6
8H	19.8	20.6	20.4	21.2	21.9	25.4	26.3	26.0	26.9	27.5
12H	19.9	20.6	20.5	21.3	22.0	26.5	27.3	27.2	27.9	28.6
8H 4H	20.2	21.0	20.8	21.6	22.3	23.0	23.9	23.6	24.5	25.1
6H	21.0	21.7	21.7	22.4	23.1	25.1	25.8	25.7	26.4	27.1
8H	21.3	22.0	22.0	22.6	23.4	26.2	26.9	26.9	27.5	28.3
12H	21.6	22.1	22.2	22.8	23.6	27.6	28.2	28.3	28.8	29.6
12H 4H	20.5	21.3	21.1	21.9	22.6	23.0	23.8	23.7	24.4	25.1
6H	21.6	22.2	22.2	22.9	23.6	25.2	25.8	25.8	26.4	27.2
8H	22.1	22.6	22.7	23.3	24.1	26.4	27.0	27.1	27.7	28.4
Variations with the observer position at spacings:										
S = 1.0H	+ 0.1 / - 0.2					+ 0.1 / - 0.1				
1.5H	+ 0.2 / - 0.3					+ 0.2 / - 0.3				
2.0H	+ 0.2 / - 0.4					+ 0.2 / - 0.3				

CIE Pub.117 Corrected 1000 lm Total Lamp Luminous Flux.(8log(F/F0) = 0.0)

C Range: 0 - 360DEG
 C Interval: 22.5DEG
 Test Speed: HIGH
 Temperature:24.3DEG
 Operators:Carl
 Test Date:2022-12-09

γ Range: 0 - 180DEG
 γ Interval: 1.0DEG
 Test System:EVERFINE GO-R5000_V2 SYSTEM V2.0.351
 Humidity:48%
 Test Distance:2.532m [K=1.0000]
 Remarks:

UTILIZATION FACTORS TABLE

Test:U:120.1V I:0.1335A P:15.36W PF:0.9582 Lamp Flux:1000.18x1 lm		
NAME: LED Luminaires	TYPE:N/A	WEIGHT:N/A
SPEC.:N/A	DIM.: N/A	SERIAL No.:N/A
MFR.: RISING-SUN	SUR.:N/A	Shielding Angle:N/A

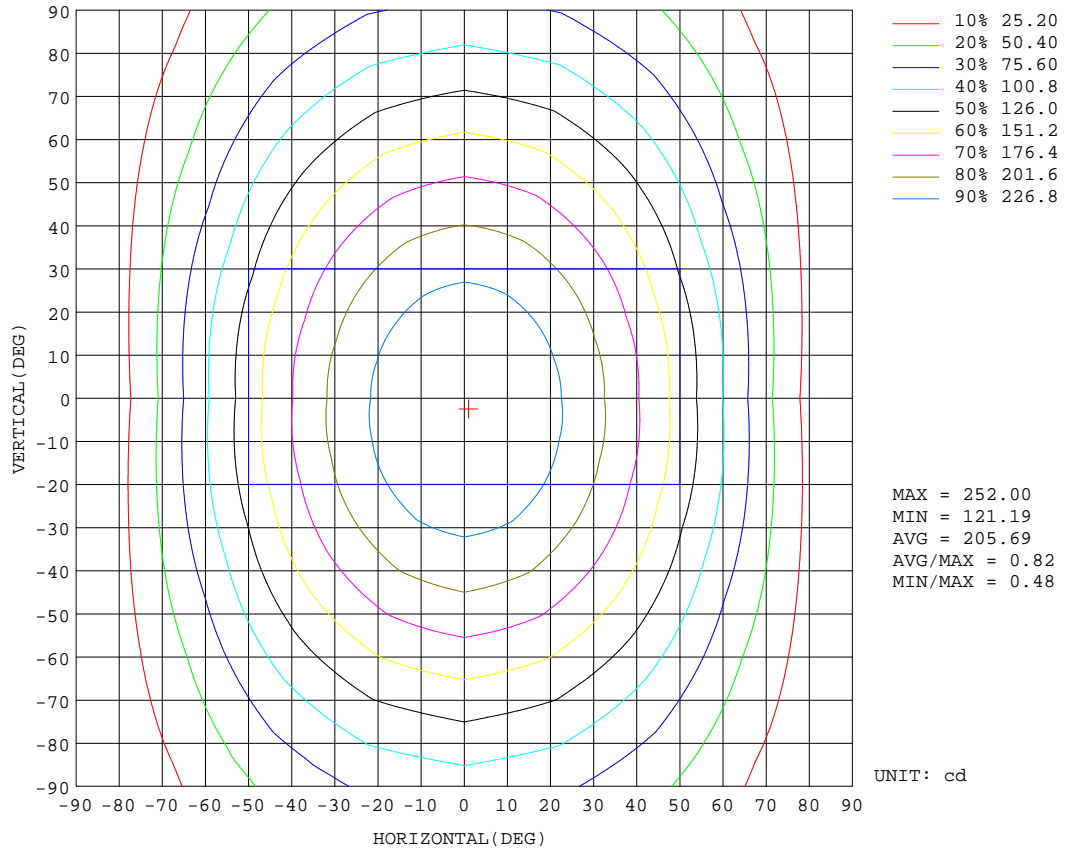
REFLECTANCE										
Ceiling	0.8	0.8	0.8	0.7	0.7	0.7	0.5	0.5	0.5	0
Walls	0.7	0.5	0.3	0.7	0.5	0.3	0.7	0.5	0.3	0
Working plane	0.2	0.2	0.2	0.2	0.2	0.2	0.2	0.2	0.2	0
ROOM INDEX	UTILIZATION FACTORS(PERCENT) $k(RI) \times RCR = 5$									
k = 0.60	50	38	31	49	38	31	47	37	30	23
0.80	59	47	39	58	46	39	55	45	38	30
1.00	67	55	47	66	54	46	62	55	45	37
1.25	74	62	54	72	61	53	68	59	52	43
1.50	79	68	59	77	66	58	72	63	57	47
2.00	86	76	68	84	74	67	78	71	64	53
2.50	91	81	74	88	79	72	82	75	69	57
3.00	94	86	79	91	83	77	85	79	73	61
4.00	99	92	85	95	89	83	89	84	79	66
5.00	102	95	90	98	92	87	91	87	83	69
ROOM INDEX	UF(total)									Direct
According to DIN EN 13032-2 2004			Suspended				SHRNOM = 1.25			

C Range: 0 - 360DEG
 C Interval: 22.5DEG
 Test Speed: HIGH
 Temperature:24.3DEG
 Operators:Carl
 Test Date:2022-12-09

γ Range: 0 - 180DEG
 γ Interval: 1.0DEG
 Test System:EVERFINE GO-R5000_V2 SYSTEM V2.0.351
 Humidity:48%
 Test Distance:2.532m [K=1.0000]
 Remarks:

ISOCANDELA DIAGRAM

Test:U:120.1V I:0.1335A P:15.36W PF:0.9582 Lamp Flux:1000.18x1 lm		
NAME: LED Luminaires	TYPE:N/A	WEIGHT:N/A
SPEC.:N/A	DIM.: N/A	SERIAL No.:N/A
MFR.: RISING-SUN	SUR.:N/A	Shielding Angle:N/A

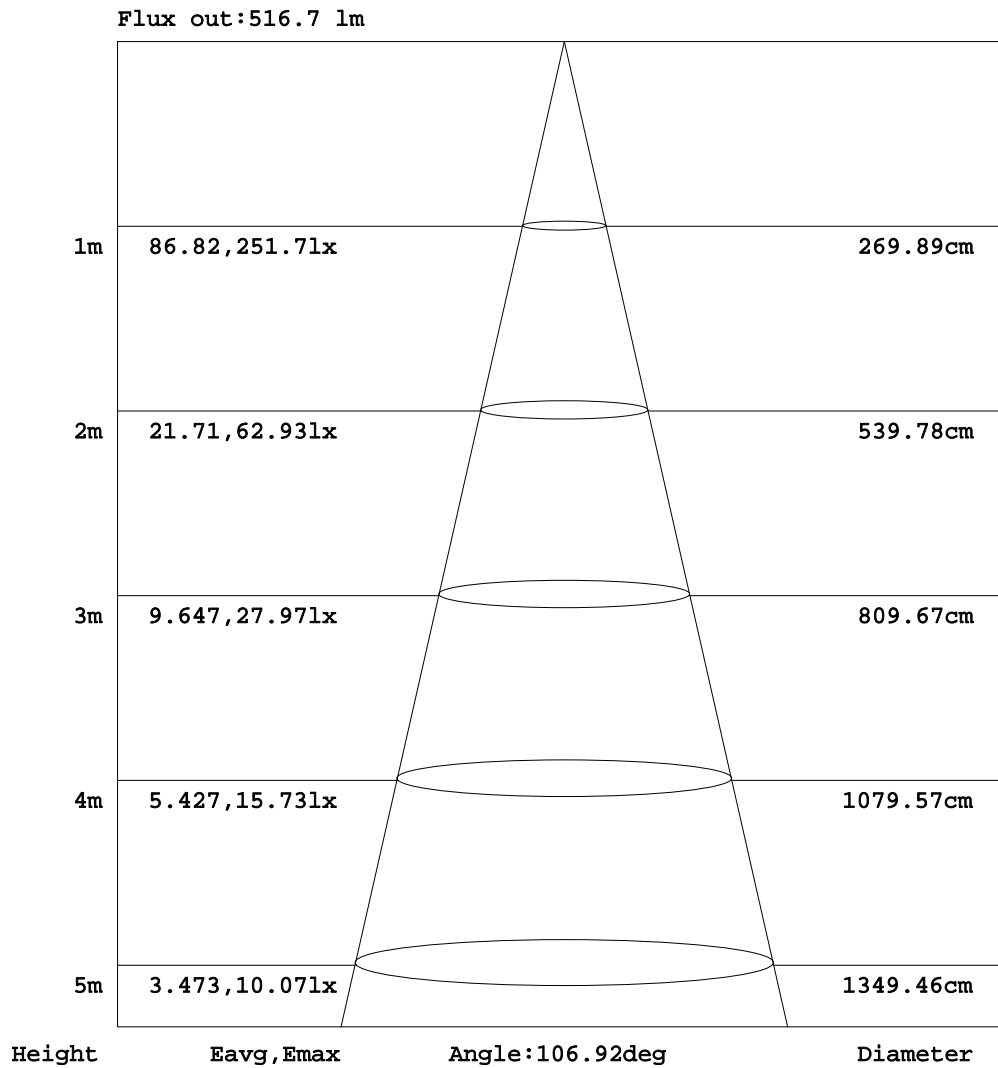


C Range: 0 - 360DEG
 C Interval: 22.5DEG
 Test Speed: HIGH
 Temperature:24.3DEG
 Operators:Carl
 Test Date:2022-12-09

γ Range: 0 - 180DEG
 γ Interval: 1.0DEG
 Test System:EVERFINE GO-R5000_V2 SYSTEM V2.0.351
 Humidity:48%
 Test Distance:2.532m [K=1.0000]
 Remarks:

AAI Figure

Test:U:120.1V I:0.1335A P:15.36W PF:0.9582 Lamp Flux:1000.18x1 lm		
NAME: LED Luminaires	TYPE:N/A	WEIGHT:N/A
SPEC.:N/A	DIM.: N/A	SERIAL No.:N/A
MFR.: RISING-SUN	SUR.:N/A	Shielding Angle:N/A



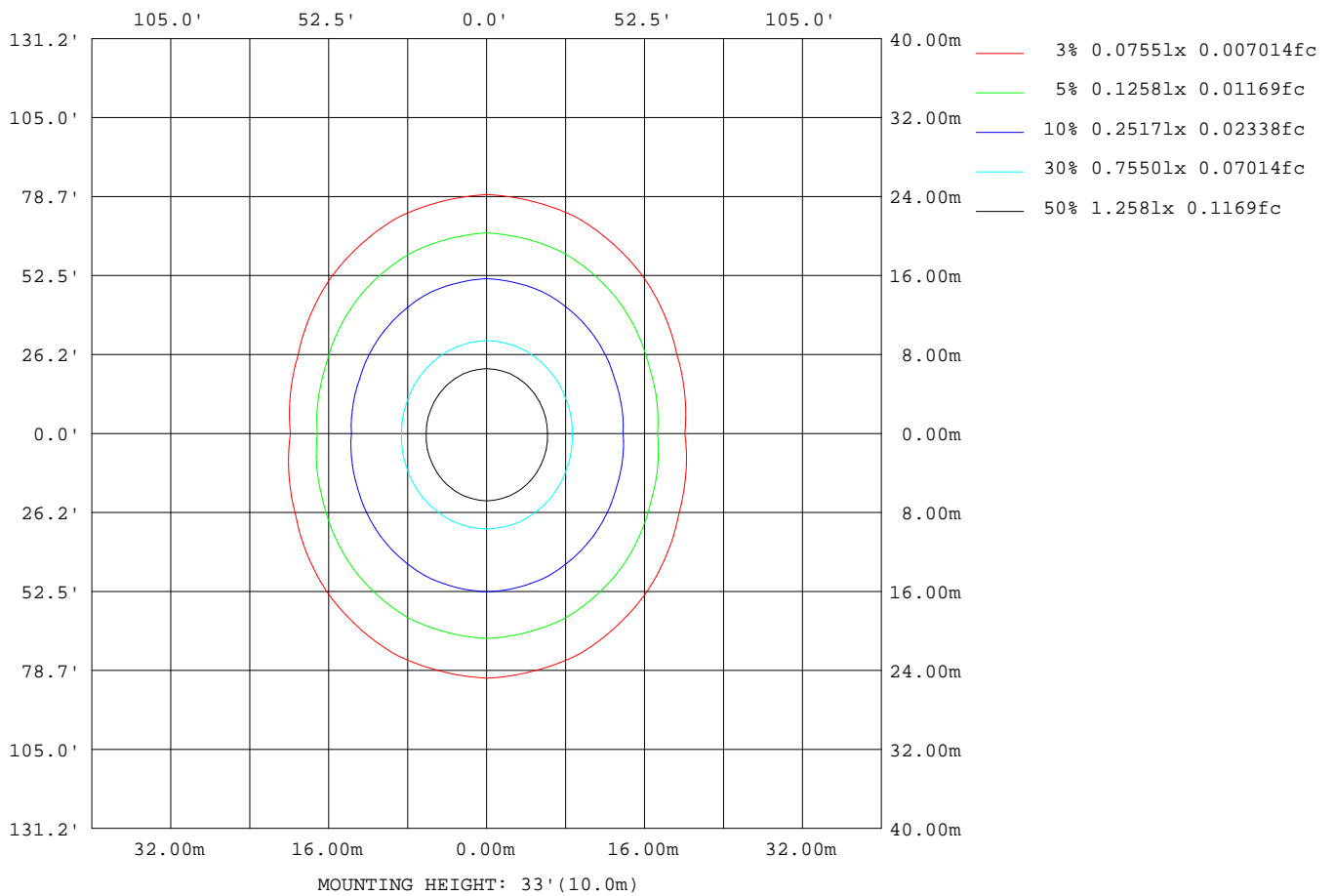
Note:The Curves indicate the illuminated area and the average illumination when the luminaire is at different distance.

C Range: 0 - 360DEG
 C Interval: 22.5DEG
 Test Speed: HIGH
 Temperature:24.3DEG
 Operators:Carl
 Test Date:2022-12-09

γ Range: 0 - 180DEG
 γ Interval: 1.0DEG
 Test System:EVERFINE GO-R5000_V2 SYSTEM V2.0.351
 Humidity:48%
 Test Distance:2.532m [K=1.0000]
 Remarks:

ISOLUX DIAGRAM

Test:U:120.1V I:0.1335A P:15.36W PF:0.9582 Lamp Flux:1000.18x1 lm		
NAME: LED Luminaires	TYPE:N/A	WEIGHT:N/A
SPEC.:N/A	DIM.: N/A	SERIAL No.:N/A
MFR.: RISING-SUN	SUR.:N/A	Shielding Angle:N/A



C Range: 0 - 360DEG
 C Interval: 22.5DEG
 Test Speed: HIGH
 Temperature:24.3DEG
 Operators:Carl
 Test Date:2022-12-09

γ Range: 0 - 180DEG
 γ Interval: 1.0DEG
 Test System:EVERFINE GO-R5000_V2 SYSTEM V2.0.351
 Humidity:48%
 Test Distance:2.532m [K=1.0000]
 Remarks:

LED Avg.L Report

Test:U:120.1V I:0.1335A P:15.36W PF:0.9582 Lamp Flux:1000.18x1 lm		
NAME: LED Luminaires	TYPE:N/A	WEIGHT:N/A
SPEC.:N/A	DIM.: N/A	SERIAL No.:N/A
MFR.: RISING-SUN	SUR.:N/A	Shielding Angle:N/A

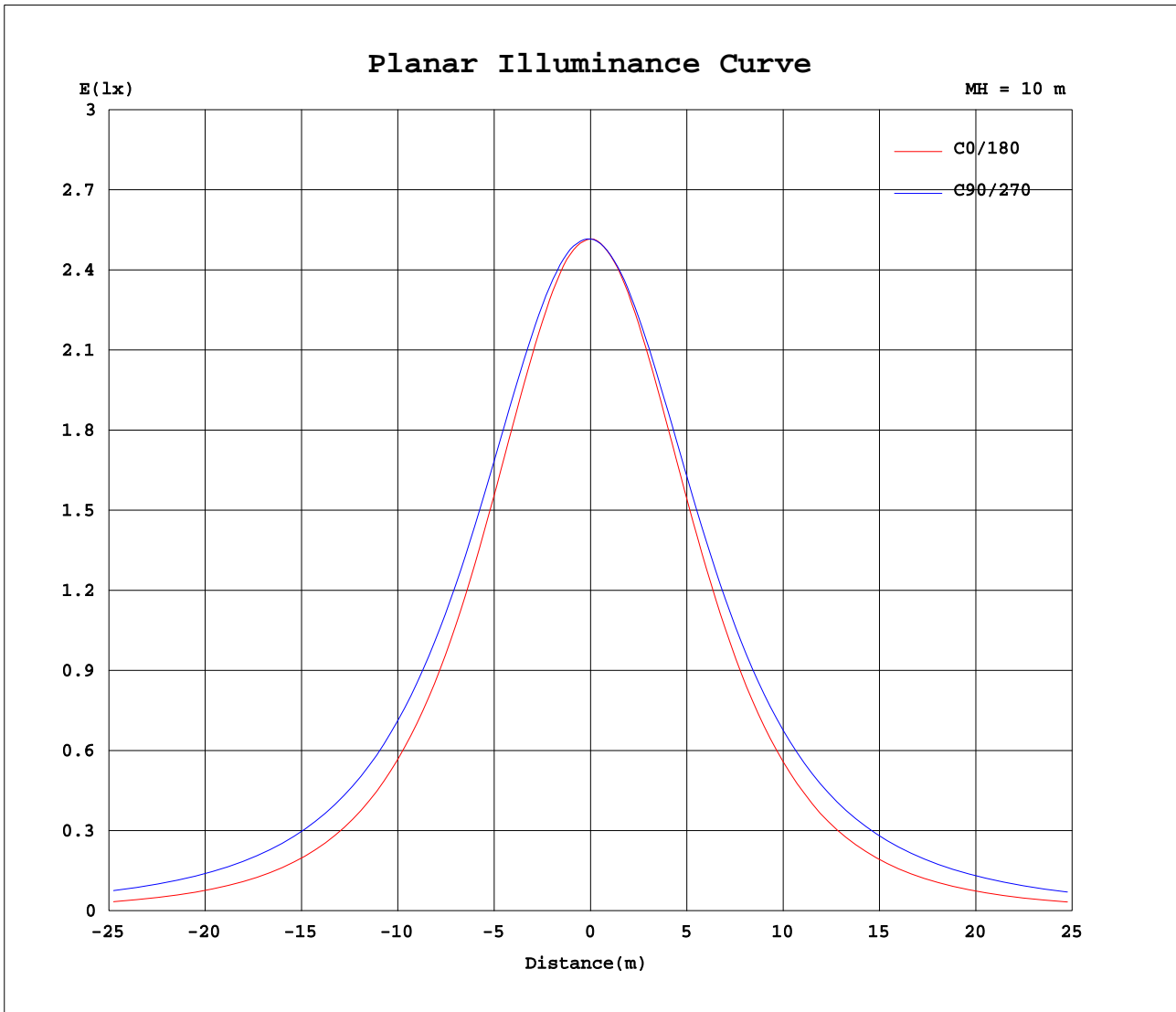
AvgL	cd/m2
L_0~180(65)av	2827
L_0~180(75)av	2083
L_0~180(85)av	767
L_90~270(65)av	5391
L_90~270(75)av	7279
L_90~270(85)av	17315
L_45(65)av	4301
L_45(75)av	5293
L_45(85)av	11308

Standard: GB/T 29293-2012

C Range: 0 - 360DEG
 C Interval: 22.5DEG
 Test Speed: HIGH
 Temperature:24.3DEG
 Operators:Carl
 Test Date:2022-12-09

γ Range: 0 - 180DEG
 γ Interval: 1.0DEG
 Test System:EVERFINE GO-R5000_V2 SYSTEM V2.0.351
 Humidity:48%
 Test Distance:2.532m [K=1.0000]
 Remarks:

Planar Illuminance Curve



C Range: 0 - 360DEG
 C Interval: 22.5DEG
 Test Speed: HIGH
 Temperature: 24.3DEG
 Operators: Carl
 Test Date: 2022-12-09

γ Range: 0 - 180DEG
 γ Interval: 1.0DEG
 Test System: EVERFINE GO-R5000_V2 SYSTEM V2.0.351
 Humidity: 48%
 Test Distance: 2.532m [K=1.0000]
 Remarks:

LUMINOUS DISTRIBUTION INTENSITY DATA

Test:U:120.1V I:0.1335A P:15.36W PF:0.9582 Lamp Flux:1000.18x1 lm		
NAME: LED Luminaires	TYPE:N/A	WEIGHT:N/A
SPEC.:N/A	DIM.: N/A	SERIAL No.:N/A
MFR.: RISING-SUN	SUR.:N/A	Shielding Angle:N/A

Table--1

UNIT: cd

C(DEG) γ (DEG)	0	22.5	45	67.5	90	112.5	135	157.5	180	202.5	225	247.5	270	292.5	315	337.5			
0	252	252	252	252	252	252	252	252	252	252	252	252	252	252	252	252			
5	250	251	251	252	252	251	251	251	250	250	250	250	250	250	250	250			
10	246	248	249	250	250	250	249	247	246	246	246	247	247	247	246	246			
15	240	242	245	247	248	246	244	241	239	239	240	242	242	242	241	240			
20	232	234	238	242	243	241	237	233	230	231	233	235	237	236	234	232			
25	221	224	230	236	238	235	229	223	219	220	223	228	230	228	225	222			
30	209	213	220	228	230	227	219	211	206	208	213	219	221	219	214	210			
35	194	199	209	218	222	217	208	198	192	194	201	209	212	209	203	196			
40	178	184	196	208	212	206	195	182	175	178	188	197	202	198	189	181			
45	160	168	182	196	202	195	181	166	158	162	174	186	191	187	176	164			
50	141	150	168	183	190	183	166	149	138	144	159	173	180	174	161	147			
55	121	132	152	170	178	170	151	130	118	125	144	160	168	161	146	128			
60	100	113	137	157	165	156	136	112	97.1	107	128	147	155	148	130	110			
65	78.7	94.6	121	143	152	143	121	93.0	75.8	88.4	113	133	143	134	115	91.2			
70	56.7	76.1	106	130	139	129	106	74.8	54.3	70.7	98.5	121	130	121	100	73.2			
75	35.9	58.8	91.7	117	126	116	91.3	57.8	33.8	54.1	84.9	108	117	109	86.4	56.4			
80	17.6	43.4	78.3	104	113	104	78.2	43.0	16.2	39.9	72.2	95.9	105	96.6	73.7	41.6			
85	4.92	30.9	66.1	91.7	101	91.6	66.2	31.0	3.73	28.2	60.7	84.5	93.8	85.1	61.9	29.5			
90	0.08	21.6	55.0	80.4	89.8	80.3	55.4	22.1	0.04	19.6	50.7	73.8	82.7	74.3	51.5	20.4			
95	0.18	15.4	46.0	70.0	79.0	70.1	46.5	16.1	0.17	14.1	42.2	64.2	72.8	64.6	42.9	14.5			
100	0.54	11.4	38.2	60.2	69.1	60.6	38.9	12.3	0.58	10.7	35.2	55.5	63.5	55.9	35.7	10.8			
105	1.23	9.09	31.8	51.8	59.7	52.0	32.5	9.93	1.31	8.78	29.4	47.7	55.1	47.9	29.7	8.74			
110	2.10	7.88	26.6	44.2	51.3	44.5	27.2	8.55	2.11	7.73	24.7	40.8	47.4	40.9	24.9	7.69			
115	2.98	7.27	22.3	37.6	43.8	37.9	23.0	7.77	2.93	7.22	21.0	34.8	40.5	34.9	21.0	7.26			
120	3.87	6.97	18.9	31.8	37.2	32.0	19.5	7.39	3.78	7.01	18.0	29.6	34.5	29.7	18.1	7.12			
125	4.78	6.88	16.3	26.8	31.3	27.1	16.7	7.28	4.63	6.99	15.6	25.2	29.3	25.2	15.7	7.15			
130	5.65	6.94	14.2	22.6	26.2	22.8	14.6	7.34	5.46	7.08	13.7	21.3	24.8	21.5	13.9	7.25			
135	6.53	7.05	12.6	19.1	21.9	19.2	12.9	7.35	6.26	7.26	12.2	18.0	20.8	18.4	12.6	7.46			
140	7.38	7.56	11.4	16.2	18.4	16.3	11.6	7.51	7.02	7.50	10.9	15.4	17.6	15.9	11.6	7.71			
145	8.08	7.80	10.5	13.9	15.5	14.0	10.7	7.96	7.73	7.67	9.90	13.1	15.0	13.9	10.9	8.03			
150	8.75	8.29	9.83	12.2	13.3	12.3	10.0	8.50	8.40	8.19	9.27	11.3	12.8	12.2	10.3	8.30			
155	9.32	8.82	9.52	11.0	11.7	11.1	9.47	8.94	8.70	8.81	8.80	10.1	11.1	11.1	10.1	8.55			
160	9.80	8.77	9.44	10.2	10.5	10.2	9.26	9.20	9.11	9.44	8.73	9.55	10.2	10.3	9.73	8.90			
165	10.1	9.04	9.46	9.81	9.87	9.75	9.59	9.50	9.45	9.72	8.69	9.31	9.69	9.71	9.38	9.11			
170	8.86	9.01	8.78	9.15	9.70	9.12	9.06	8.30	7.47	7.60	8.58	8.47	9.32	9.68	9.35	8.99			
175	6.35	6.40	7.29	7.12	7.02	7.47	5.80	5.41	4.98	5.02	5.65	6.39	7.51	7.66	8.17	8.31			
180	4.13	3.62	2.71	1.47	0.00	1.10	3.00	3.24	4.34	4.31	3.75	3.26	2.26	0.48	2.39	3.21			

C Range: 0 - 360DEG
 C Interval: 22.5DEG
 Test Speed: HIGH
 Temperature:24.3DEG
 Operators:Carl
 Test Date:2022-12-09

γ Range: 0 - 180DEG
 γ Interval: 1.0DEG
 Test System:EVERFINE GO-R5000_V2 SYSTEM V2.0.351
 Humidity:48%
 Test Distance:2.532m [K=1.0000]
 Remarks: