



# LED ROUND DOWNLIGHT RETROFIT KIT

► **DESIGN & OPTIONS** - LED ROUND DOWNLIGHT RETROFIT KIT has a classic, low-profile design with a baffle trim that allows you to have a stylish look with efficient lighting. Smooth dimming capabilities ranging from 100% to 10% with modern LED dimmers allow you to control the look and feel of your space. You can choose either 3000K, 4000K or 5000K color temperature. The 120° beam angle will leave no dark spots on the surface of your floor.

► **INSTALLATION** - Easy installation with universal TP24 or E26 connectors. It has everything you need in one set. Preinstalled spring clips are the best solution for quick and easy installation. This fixture is suitable for most new construction, remodeling, and shallow recessed lighting housings. Refer to install instructions for detailed steps.

► **APPLICATION** - Install the retrofit fixture to the ceiling for bright light in your family room, bedroom, hallways, corridors, or any other common areas in your living space. It is suitable for Wet locations, making it perfect for kitchen and bathroom lighting as well. You could also use it as a complimentary light to an existing ceiling light.

► **ENERGY SAVING & EFFICIENCY** - Replacing an incandescent fixture with LED ROUND DOWNLIGHT RETROFIT KIT can save you 8 times as much on your current energy costs. With a lifespan of 50,000 hours, these fixtures are made to last decades under normal operation! This fixture will save you a significant amount of money in its lifetime.

► **CERTIFICATION & WARRANTY** - BBuy with confidence: ASD provides a 5-year warranty along with ETL and ENERGY STAR certifications to guarantee top quality products and safety!

Top US certifications allow participation in rebates; please check the rebate programs available in your state.

Catalog number	
Notes	
Type	



## PRODUCT LEGEND:

Family	Model	Trim	Shape	Size	Dimmable	Watts	CCT	Finish
ASD-LDLRK	1	B	R	X	X	XX	XX	XX
LED Round Downlight Retrofit Kit		Baffle	Round	4 = 4 inch 6 = 6 inch	D = Dimmable	9 = 9 W 12 = 12 W	30 = 3,000 K 40 = 4,000 K 50 = 5,000 K	WH = White

## LED ROUND DOWNLIGHT RETROFIT KIT:

Model	Size	Watts	Dimmable	CCT	Lumens	Dimensions (LxH)	UPC
ASD-LDLRK-1BR-4D930-WH	4 inch	9 W	TRIAC	3,000 K	600 lm	5" x 5" x 2"	810050731195
ASD-LDLRK-1BR-4D940-WH	4 inch	9 W	TRIAC	4,000 K	600 lm	5" x 5" x 2"	810050731201
ASD-LDLRK-1BR-4D950-WH	4 inch	9 W	TRIAC	5,000 K	600 lm	5" x 5" x 2"	810050731218
ASD-LDLRK-1BR-6D1230-WH	6 inch	12 W	TRIAC	3,000 K	1,000 lm	7 3/8" x 7 3/8" x 2 1/2"	810050731225
ASD-LDLRK-1BR-6D1240-WH	6 inch	12 W	TRIAC	4,000 K	1,000 lm	7 3/8" x 7 3/8" x 2 1/2"	810050731232
ASD-LDLRK-1BR-6D1250-WH	6 inch	12 W	TRIAC	5,000 K	1,000 lm	7 3/8" x 7 3/8" x 2 1/2"	810050731249

## ORDERING INFORMATION:

Model	Pcs in middle box	Middle box Size	Middle box Weight	GTIN 14 for Middle box	Pcs. per Carton	Carton Size	Carton Weight	GTIN 14 for Carton
ASD-LDLRK-1BR-4D930-WH	6	10.6" x 7.5" x 5.5"	2.2 lb	10810050731192	12	15.7" x 11.4" x 6.3"	5.1 lb	20810050731199
ASD-LDLRK-1BR-4D940-WH	6	10.6" x 7.5" x 5.5"	2.2 lb	10810050731208	12	15.7" x 11.4" x 6.3"	5.1 lb	20810050731205
ASD-LDLRK-1BR-4D950-WH	6	10.6" x 7.5" x 5.5"	2.2 lb	10810050731215	12	15.7" x 11.4" x 6.3"	5.1 lb	20810050731212
ASD-LDLRK-1BR-6D1230-WH	6	15.4" x 8.9" x 7.9"	3.5 lb	10810050731222	12	18.5" x 16.1" x 8.7"	7.9 lb	20810050731229
ASD-LDLRK-1BR-6D1240-WH	6	15.4" x 8.9" x 7.9"	3.5 lb	10810050731239	12	18.5" x 16.1" x 8.7"	7.9 lb	20810050731236
ASD-LDLRK-1BR-6D1250-WH	6	15.4" x 8.9" x 7.9"	3.5 lb	10810050731246	12	18.5" x 16.1" x 8.7"	7.9 lb	20810050731243

For most up-to-date spec sheets please refer to [asd-lighting.com](http://asd-lighting.com)

ASD LIGHTING CORP

E-mail: [orders@asd-lighting.com](mailto:orders@asd-lighting.com) | Web site: [www.asd-lighting.com](http://www.asd-lighting.com)





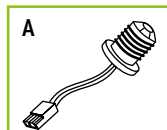
# LED ROUND DOWNLIGHT RETROFIT KIT

## PRODUCT SPECIFICATIONS:

Construction & Materials					
Housing	Aluminum, PP				
Lens	Acrylic				
Finish Color	White				
Weight	ASD-LDLRK-1BR-4D930-WH	0.3 lb (0.1 kg)			
	ASD-LDLRK-1BR-4D940-WH				
	ASD-LDLRK-1BR-4D950-WH				
	ASD-LDLRK-1BR-6D1230-WH	0.5 lb (0.2 kg)			
	ASD-LDLRK-1BR-6D1240-WH				
	ASD-LDLRK-1BR-6D1250-WH				
Environmental System					
Work Environment	Suitable for Wet Locations				
Operating Temperature	-31°F to 104°F (-35°C to 40°C)				
L-70 Life	> 50,000 hrs				
Optical System					
Luminous Flux	ASD-LDLRK-1BR-4D930-WH	600 lm			
	ASD-LDLRK-1BR-4D940-WH				
	ASD-LDLRK-1BR-4D950-WH				
	ASD-LDLRK-1BR-6D1230-WH	1,000 lm			
	ASD-LDLRK-1BR-6D1240-WH				
	ASD-LDLRK-1BR-6D1250-WH				
Color Temperature	3,000 K; 4,000 K; 5,000 K				
CRI	> 90				
Electrical System					
Input Voltage	120 V				
Max input current	ASD-LDLRK-1BR-4D930-WH	0.09 A			
	ASD-LDLRK-1BR-4D940-WH				
	ASD-LDLRK-1BR-4D950-WH				
	ASD-LDLRK-1BR-6D1230-WH	0.12 A			
	ASD-LDLRK-1BR-6D1240-WH				
	ASD-LDLRK-1BR-6D1250-WH				
Inrush current (Action time)	0.2 A (0.01 S)				
AC input range	min 100 V max 135 V				
Off State Power	0 W				
Power Consumption	ASD-LDLRK-1BR-4D930-WH	9 W			
	ASD-LDLRK-1BR-4D940-WH				
	ASD-LDLRK-1BR-4D950-WH				
	ASD-LDLRK-1BR-6D1230-WH	12 W			
	ASD-LDLRK-1BR-6D1240-WH				
	ASD-LDLRK-1BR-6D1250-WH				
Power Factor	> 0.9				
Output voltage	132 V				
LED Driver Class	DOB				
Dimming range					
10-100%					
Dimming compatible controls					
Brand	Lutron	Leviton			
Models	DVCL-153P-WH	CT-603PG	S-600P	6672	6633-P
	MACL-153M-WH	S-603P	DV-600P	1F4205	1E1205
	DVLV-603P-IV	DVV-603PGH-WH		6631	6674
	CTCL-153PDH	SLV-600P-WH		0B33K1	
	Regular and Voluntary Certifications				
5-year limited warranty	cETLus certified 4008281	Energy Star listed			

## PACKAGE CONTENTS:

Description	Q-ty
LED Round Downlight Retrofit Kit	1
Adapter TP24-E26 (A)	1
Box	1
Cut sheet	2



## INSTALLATION GUIDE

### IMPORTANT SAFETY INFORMATION:

Please read all the instructions below before installation.

- ▶ Make sure that the supply voltage corresponds to the rated product voltage.
- ▶ The product must be installed by a qualified electrician in accordance with the National Electrical Code and corresponding local codes.
- ▶ If the product is damaged, do not use it.

### ⚠ WARNING

**RISK OF PERSONAL INJURY – READ and follow all WARNINGS and installation instructions.**

Keep or give to the owner for future reference.

**Risk of cuts:** Wear gloves to prevent cuts or abrasions when removing from carton, handling, installing, and maintaining this product.

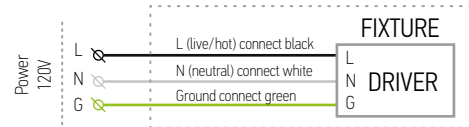
**Risk of electric shock:** This product must be installed in accordance with the applicable installation code by a person familiar with the construction and operation of the product and the hazards involved.

**Risk of Fire:** Minimum 194°F supply conductors. Consult a qualified electrician to ensure correct branch circuit conductor.

ASD® assumes no responsibility for claims arising out of improper or careless installation or handling of this product.

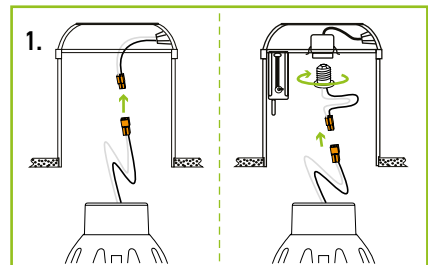
For recessed installation: Access above ceiling required. Inherently protected. Vapor barrier must be suitable for 194°F.

### ELECTRICAL SCHEMATIC DIAGRAM:



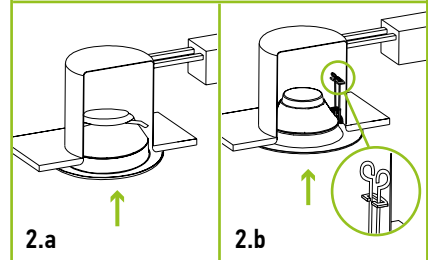
### INSTALLATION STEPS:

1. Turn off the main power and remove the existing trim and bulb from the Can. Use one of the options to connect the terminals.



#### 2.a For Downlight 4"

Adjust springs to open position. Carefully route wires into the Can and gently push fixture up into the Can until sealed.



#### 2.b For Downlight 6"

Squeeze the two sets of spring clip arms up toward each other. Route wires into the Can and hook both springs into the arm hook on the inside of Can. Release springs and gently push fixture up into the Can until sealed.

For most up-to-date spec sheets please refer to [asd-lighting.com](http://asd-lighting.com)