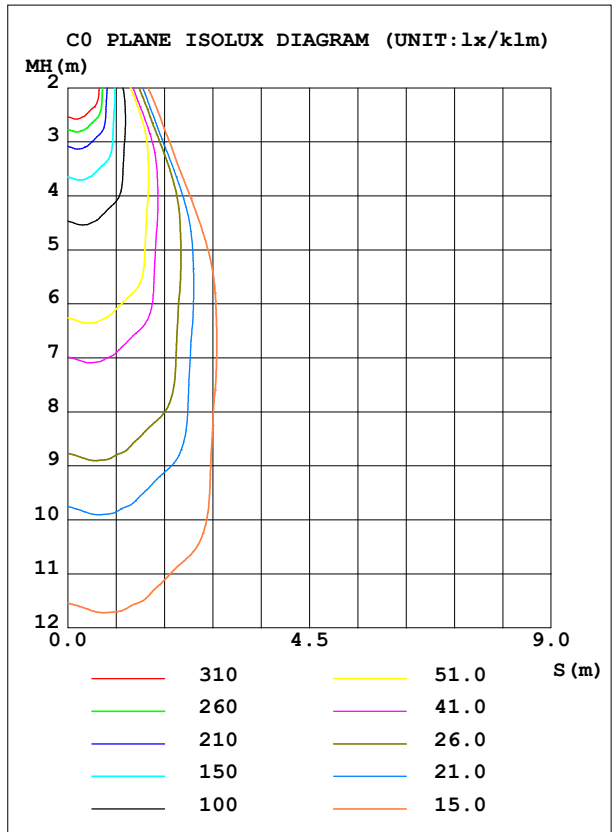
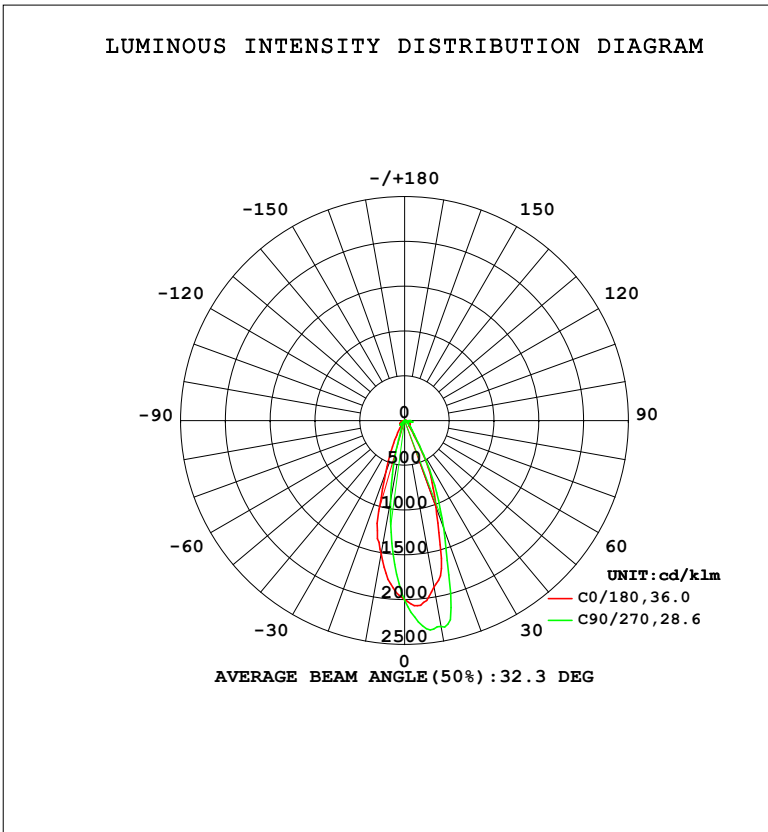


LUMINAIRE PHOTOMETRIC TEST REPORT

Test:U:119.86V I:0.0647A P:7.4802W PF:0.9640 Freq:59.98Hz		
UTHDi:0.00% ITHDi:0.00% KDisp:0 Lamp Flux:416.593x1 lm		
NAME: ASD-CD-PWR-2D8AC-WH	TYPE:	WEIGHT:
SPEC.: 4000K 90	DIM.:	SERIAL No.:
MFR.: ASD LIGHTING CORP	SUR.:	Shielding Angle:

DATA OF LAMP		PHOTOMETRIC DATA			
MODEL		Imax (cd/klm)	2401	S/MH (C0/180)	0.52
NOMINAL POWER (W)	8	LOR (%)	100.0	S/MH (C90/270)	0.31
RATED VOLTAGE (V)	120.0	TOTAL FLUX (lm/klm)	1000.0	η UP, DN (C0-180)	0.0, 70.7
NOMINAL FLUX (lm)	416.593	CIE CLASS	DIRECT	η UP, DN (C180-360)	0.0, 29.3
LAMPS INSIDE	1	η up (%)	0.0	CIBSE SHR NOM	0.50
TEST VOLTAGE (V)	120	η down (%)	100.0	CIBSE SHR MAX	0.55



C Range: 0 - 360DEG
 C Interval: 22.5DEG
 Test Speed: HIGH
 Temperature: 25.3 °C
 Operators:
 Test Date: 2023-07-13

γ Range: 0 - 90DEG
 γ Interval: 1.0DEG
 Test System: EVERFINE GO-SPEX500_V1 SYSTEM V2.00.460
 Humidity: 65.0%
 Test Distance: 3.080m [K=1.0000]
 Remarks:

ZONAL FLUX DIAGRAM

ZONAL FLUX DIAGRAM:

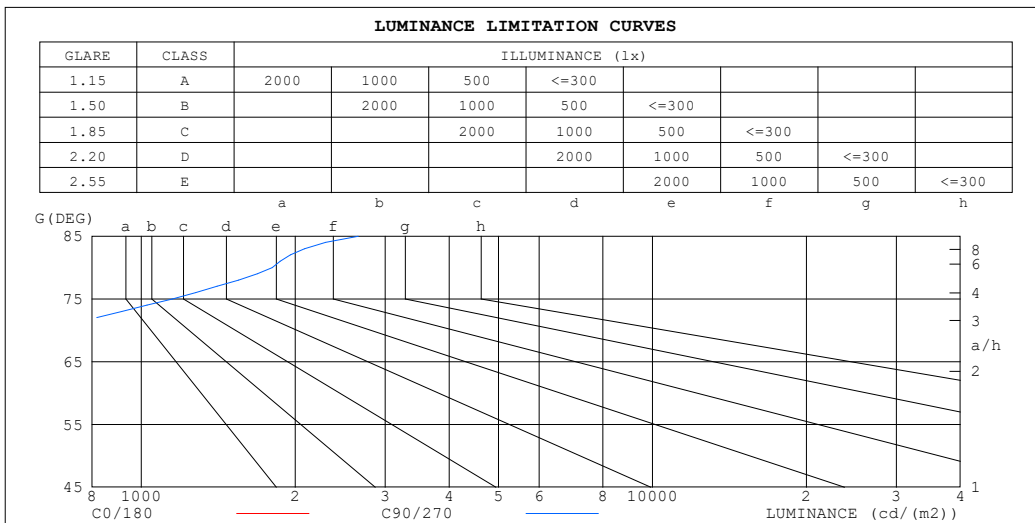
γ	C0	C45	C90	C135	C180	C225	C270	C315	γ	Φ zone	Φ total	%lum,lamp
10	1890	2306	2333	2074	1516	1028	919.0	1274	0- 10	175.4	175.4	17.5,17.5
20	1031	1236	1276	1173	619.0	200.4	141.0	331.7	10- 20	339.7	515.2	51.5,51.5
30	337.5	350.3	376.0	389.8	158.5	61.42	58.86	80.26	20- 30	211.3	726.5	72.6,72.6
40	86.41	115.0	119.7	101.1	59.88	56.98	57.10	54.94	30- 40	79.64	806.1	80.6,80.6
50	67.08	40.52	39.34	68.43	68.98	50.44	45.98	61.97	40- 50	54.44	860.6	86.1,86.1
60	57.64	35.64	29.66	53.19	55.22	24.41	17.58	40.53	50- 60	40.13	900.7	90.1,90.1
70	51.96	54.82	60.21	54.82	36.13	4.348	3.294	21.95	60- 70	36.70	937.4	93.7,93.7
80	34.42	75.38	83.55	52.55	13.80	1.708	0.9391	3.984	70- 80	38.72	976.1	97.6,97.6
90	7.236	30.40	38.17	20.21	0.2467	0.4162	0.4908	0.3151	80- 90	23.88	1000	100,100
100									90-100			
110									100-110			
120									110-120			
130									120-130			
140									130-140			
150									140-150			
160									150-160			
170									160-170			
180									170-180			
DEG	LUMINOUS INTENSITY:cd/klm									UNIT:lm/klm		

C Range: 0 - 360DEG
 C Interval: 22.5DEG
 Test Speed: HIGH
 Temperature:25.3°C
 Operators:
 Test Date:2023-07-13

γ Range: 0 - 90DEG
 γ Interval: 1.0DEG
 Test System:EVERFINE GO-SPEX500_V1 SYSTEM V2.00.460
 Humidity:65.0%
 Test Distance:3.080m [K=1.0000]
 Remarks:

LUMINANCE LIMITATION CURVES

Test:U:119.86V I:0.0647A P:7.4802W PF:0.9640 Freq:59.98Hz UTHDi:0.00% ITHDi:0.00% KDisp:0 Lamp Flux:416.593x1 lm		
NAME: ASD-CD-PWR-2D8AC-WH	TYPE:	WEIGHT:
SPEC.: 4000K 90	DIM.:	SERIAL No.:
MFR.: ASD LIGHTING CORP	SUR.:	Shielding Angle:



LUMINANCE cd/(m2)		
G (DEG)	C0/180	C90/270
85	658	2657
80	743	1804
75	715	1150
70	570	660
65	472	408
60	432	222
55	384	162
50	391	229
45	371	419

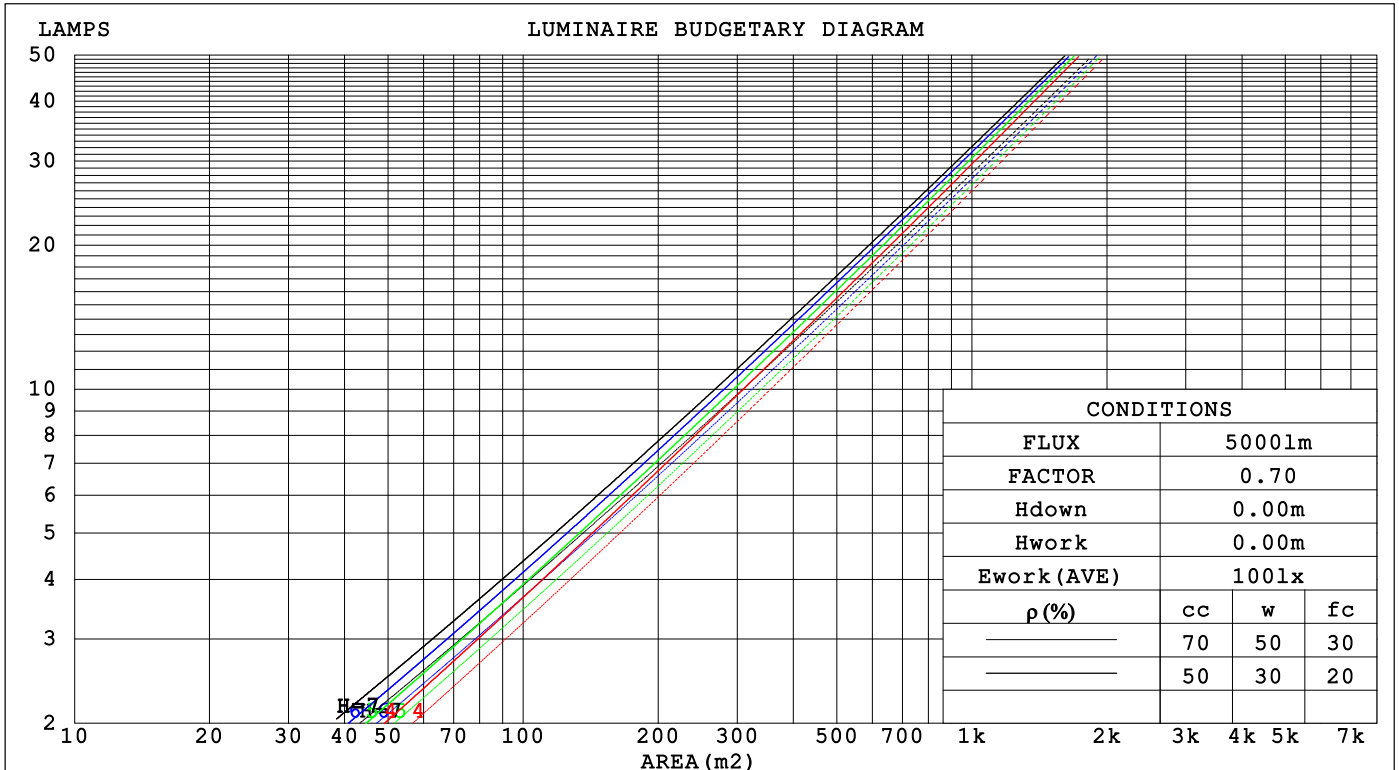
C Range: 0 - 360DEG
 C Interval: 22.5DEG
 Test Speed: HIGH
 Temperature:25.3°C
 Operators:
 Test Date:2023-07-13

γ Range: 0 - 90DEG
 γ Interval: 1.0DEG
 Test System:EVERFINE GO-SPEX500_V1 SYSTEM V2.00.460
 Humidity:65.0%
 Test Distance:3.080m [K=1.0000]
 Remarks:

CU AND LUMINAIRE BUDGETARY ESTIMATE DIAGRAM

Test:U:119.86V I:0.0647A P:7.4802W PF:0.9640 Freq:59.98Hz		
UTHdi:0.00% ITHdi:0.00% KDisp:0 Lamp Flux:416.593x1 lm		
NAME: ASD-CD-PWR-2D8AC-WH	TYPE:	WEIGHT:
SPEC.: 4000K 90	DIM.:	SERIAL No.:
MFR.: ASD LIGHTING CORP	SUR.:	Shielding Angle:

ρcc	80%			70%			50%			30%			10%			0
ρw	50%	30%	10%	50%	30%	10%	50%	30%	10%	50%	30%	10%	50%	30%	10%	0
ρfc	20%			20%			20%			20%			20%			0
RCR	RCR:Room Cavity Ratio															
	Coefficients of Utilization(CU)															
0.0	1.19	1.19	1.19	1.16	1.16	1.16	1.11	1.11	1.11	1.06	1.06	1.06	1.02	1.02	1.02	1.00
1.0	1.08	1.05	1.03	1.06	1.03	1.01	1.02	.90	.98	.98	.96	.95	.95	.93	.92	.90
2.0	1.00	.95	.91	.98	.94	.90	.95	.91	.88	.92	.89	.86	.89	.87	.85	.83
3.0	.93	.88	.83	.92	.87	.82	.89	.85	.81	.86	.83	.80	.84	.81	.79	.77
4.0	.87	.81	.77	.86	.81	.76	.84	.79	.75	.82	.78	.74	.80	.76	.74	.72
5.0	.82	.76	.72	.81	.76	.71	.79	.74	.71	.78	.73	.70	.76	.72	.69	.68
6.0	.78	.72	.67	.77	.71	.67	.75	.70	.67	.74	.70	.66	.73	.69	.66	.64
7.0	.74	.68	.64	.73	.67	.63	.72	.67	.63	.71	.66	.63	.70	.65	.62	.61
8.0	.70	.64	.60	.70	.64	.60	.69	.64	.60	.68	.63	.60	.67	.63	.59	.58
9.0	.67	.61	.58	.67	.61	.57	.66	.61	.57	.65	.60	.57	.64	.60	.57	.56
10.0	.64	.59	.55	.64	.59	.55	.63	.58	.55	.62	.58	.55	.62	.57	.54	.53



C Range: 0 - 360DEG
 C Interval: 22.5DEG
 Test Speed: HIGH
 Temperature:25.3 °C
 Operators:
 Test Date:2023-07-13

γ Range: 0 - 90DEG
 γ Interval: 1.0DEG
 Test System:EVERFINE GO-SPEX500_V1 SYSTEM V2.00.460
 Humidity:65.0%
 Test Distance:3.080m [K=1.0000]
 Remarks:

WEC AND CCEC

Test:U:119.86V I:0.0647A P:7.4802W PF:0.9640 Freq:59.98Hz		
UTHDi:0.00% ITHDi:0.00% KDisp:0 Lamp Flux:416.593x1 lm		
NAME: ASD-CD-PWR-2D8AC-WH	TYPE:	WEIGHT:
SPEC.: 4000K 90	DIM.:	SERIAL No.:
MFR.: ASD LIGHTING CORP	SUR.:	Shielding Angle:

ρ_{CC}	80%			70%			50%			30%			10%			0
ρ_w	50%	30%	10%	50%	30%	10%	50%	30%	10%	50%	30%	10%	50%	30%	10%	0
ρ_{fc}	20%			20%			20%			20%			20%			0
RCR	RCR:Room Cavity Ratio						Wall Exitance Coefficients(WEC)									
0.0																
1.0	.223	.127	.040	.216	.123	.039	.203	.117	.037	.191	.110	.035	.180	.105	.034	
2.0	.200	.110	.034	.194	.107	.033	.183	.102	.032	.173	.097	.030	.164	.093	.029	
3.0	.182	.097	.029	.177	.095	.029	.168	.091	.028	.159	.087	.027	.151	.084	.026	
4.0	.167	.087	.026	.163	.085	.025	.155	.082	.025	.148	.079	.024	.141	.077	.023	
5.0	.155	.079	.023	.152	.078	.023	.145	.075	.022	.138	.073	.022	.132	.071	.021	
6.0	.145	.073	.021	.142	.072	.021	.136	.070	.020	.130	.068	.020	.125	.066	.020	
7.0	.136	.067	.019	.133	.066	.019	.128	.065	.019	.123	.063	.018	.118	.061	.018	
8.0	.128	.063	.018	.126	.062	.018	.121	.061	.017	.117	.059	.017	.113	.058	.017	
9.0	.122	.059	.016	.119	.058	.016	.115	.057	.016	.111	.056	.016	.107	.055	.016	
10.0	.115	.055	.015	.113	.055	.015	.110	.054	.015	.106	.053	.015	.103	.052	.015	

ρ_{CC}	80%			70%			50%			30%			10%			0
ρ_w	50%	30%	10%	50%	30%	10%	50%	30%	10%	50%	30%	10%	50%	30%	10%	0
ρ_{fc}	20%			20%			20%			20%			20%			0
RCR	RCR:Room Cavity Ratio						Ceiling Cavity Exitance Coefficients(CCEC)									
0.0	.190	.190	.190	.163	.163	.163	.111	.111	.111	.064	.064	.064	.020	.020	.020	
1.0	.174	.157	.141	.149	.135	.122	.102	.093	.084	.059	.054	.049	.019	.017	.016	
2.0	.160	.132	.109	.137	.114	.094	.094	.079	.066	.054	.046	.039	.017	.015	.013	
3.0	.148	.114	.087	.126	.098	.075	.087	.068	.053	.050	.040	.031	.016	.013	.010	
4.0	.137	.099	.070	.117	.086	.061	.081	.060	.043	.047	.035	.026	.015	.011	.008	
5.0	.127	.088	.058	.109	.076	.051	.075	.053	.036	.044	.031	.021	.014	.010	.007	
6.0	.119	.078	.049	.102	.068	.043	.071	.047	.030	.041	.028	.018	.013	.009	.006	
7.0	.112	.071	.042	.096	.061	.036	.066	.043	.026	.039	.025	.015	.012	.008	.005	
8.0	.105	.064	.036	.091	.056	.031	.063	.039	.022	.037	.023	.013	.012	.008	.004	
9.0	.100	.059	.031	.086	.051	.027	.059	.036	.019	.035	.021	.012	.011	.007	.004	
10.0	.095	.054	.028	.081	.047	.024	.057	.033	.017	.033	.020	.010	.011	.006	.003	

C Range: 0 - 360DEG
 C Interval: 22.5DEG
 Test Speed: HIGH
 Temperature:25.3°C
 Operators:
 Test Date:2023-07-13

γ Range: 0 - 90DEG
 γ Interval: 1.0DEG
 Test System:EVERFINE GO-SPEX500_V1 SYSTEM V2.00.460
 Humidity:65.0%
 Test Distance:3.080m [K=1.0000]
 Remarks:

UGR(Unified Glare Rating) Table

Test:U:119.86V I:0.0647A P:7.4802W PF:0.9640 Freq:59.98Hz UTHDi:0.00% ITHDi:0.00% KDisp:0 Lamp Flux:416.593x1 lm										
NAME: ASD-CD-PWR-2D8AC-WH					TYPE:			WEIGHT:		
SPEC.: 4000K 90					DIM.:			SERIAL No.:		
MFR.: ASD LIGHTING CORP					SUR.:			Shielding Angle:		
ceiling/cavity	0.7	0.7	0.5	0.5	0.3	0.7	0.7	0.5	0.5	0.3
walls	0.5	0.3	0.5	0.3	0.3	0.5	0.3	0.5	0.3	0.3
working plane	0.2	0.2	0.2	0.2	0.2	0.2	0.2	0.2	0.2	0.2
Room dimensions	Viewed crosswise					Viewed endwise				
x = 2H y = 2H	9.0	9.9	9.2	10.1	10.3	7.5	8.5	7.7	8.7	8.8
3H	11.9	12.8	12.1	13.0	13.2	11.8	12.7	12.1	13.0	13.2
4H	13.7	14.6	14.0	14.8	15.0	15.0	15.9	15.3	16.2	16.4
6H	15.3	16.1	15.6	16.4	16.6	18.2	19.1	18.5	19.3	19.6
8H	15.7	16.5	16.0	16.8	17.0	19.4	20.2	19.7	20.4	20.7
12H	16.0	16.7	16.3	17.0	17.3	20.4	21.1	20.7	21.4	21.7
4H 2H	9.7	10.5	9.9	10.8	11.0	8.6	9.5	8.9	9.7	10.0
3H	13.1	13.9	13.5	14.2	14.5	13.4	14.2	13.7	14.5	14.7
4H	15.3	16.0	15.6	16.3	16.6	16.8	17.5	17.1	17.8	18.1
6H	17.2	17.9	17.6	18.2	18.5	20.0	20.7	20.4	21.0	21.4
8H	17.7	18.3	18.1	18.7	19.0	21.2	21.8	21.6	22.2	22.5
12H	18.0	18.6	18.5	19.0	19.4	22.2	22.8	22.6	23.2	23.6
8H 4H	16.7	17.3	17.1	17.7	18.0	17.8	18.4	18.2	18.8	19.1
6H	18.9	19.4	19.3	19.8	20.2	21.2	21.7	21.6	22.1	22.5
8H	19.5	20.0	20.0	20.4	20.8	22.4	22.9	22.9	23.3	23.8
12H	20.0	20.4	20.5	20.9	21.3	23.6	24.0	24.1	24.5	24.9
12H 4H	17.2	17.7	17.6	18.1	18.5	18.0	18.6	18.4	18.9	19.3
6H	19.4	19.9	19.9	20.3	20.7	21.4	21.8	21.8	22.3	22.7
8H	20.1	20.5	20.6	21.0	21.4	22.7	23.1	23.2	23.6	24.0
Variations with the observer position at spacings(CIE Pub.117):										
S = 1.0H	+ 0.1 / - 0.1					+ 0.1 / - 0.1				
1.5H	+ 0.1 / - 0.1					+ 0.1 / - 0.1				
2.0H	+ 0.2 / - 0.2					+ 0.2 / - 0.2				

CIE Pub.117, 416.6 lm Total Lamp Luminous Flux Correct (8log(F/F0) = -3.0)
 Area: 0.111111 m2

C Range: 0 - 360DEG
 C Interval: 22.5DEG
 Test Speed: HIGH
 Temperature:25.3°C
 Operators:
 Test Date:2023-07-13

γ Range: 0 - 90DEG
 γ Interval: 1.0DEG
 Test System:EVERFINE GO-SPEX500_V1 SYSTEM V2.00.460
 Humidity:65.0%
 Test Distance:3.080m [K=1.0000]
 Remarks:

UTILIZATION FACTORS TABLE

Test:U:119.86V I:0.0647A P:7.4802W PF:0.9640 Freq:59.98Hz UTHDi:0.00% ITHDi:0.00% KDisp:0 Lamp Flux:416.593x1 lm		
NAME: ASD-CD-PWR-2D8AC-WH	TYPE:	WEIGHT:
SPEC.: 4000K 90	DIM.:	SERIAL No.:
MFR.: ASD LIGHTING CORP	SUR.:	Shielding Angle:

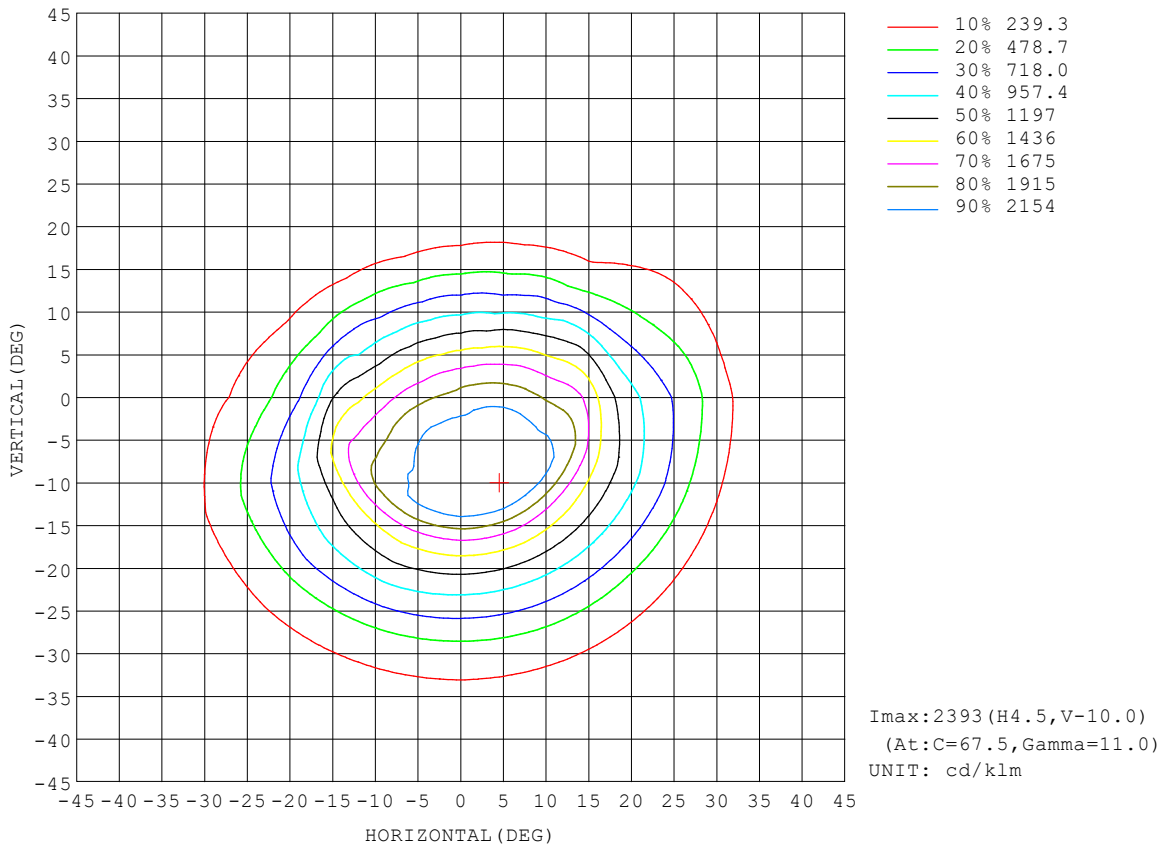
REFLECTANCE										
Ceiling	0.8	0.8	0.8	0.7	0.7	0.7	0.5	0.5	0.5	0
Walls	0.7	0.5	0.3	0.7	0.5	0.3	0.7	0.5	0.3	0
Working plane	0.2	0.2	0.2	0.2	0.2	0.2	0.2	0.2	0.2	0
ROOM INDEX	UTILIZATION FACTORS (PERCENT) $k(RI) \times RCR = 5$									
$k = 0.60$	80	72	68	79	72	68	79	72	67	63
0.80	88	80	76	87	80	75	85	79	75	70
1.00	93	85	81	92	85	80	90	85	80	75
1.25	97	90	86	96	90	85	94	88	84	79
1.50	100	94	89	99	93	89	96	92	88	82
2.00	104	98	94	102	97	93	99	95	92	85
2.50	106	101	97	104	100	96	101	97	94	87
3.00	108	103	100	106	102	99	103	99	96	89
4.00	111	107	104	109	105	102	105	102	100	92
5.00	113	109	107	110	107	105	106	104	102	94
ROOM INDEX	UF(total)									Direct
According to DIN EN 13032-2 2004			Suspended				SHRNOM = 1.25			

C Range: 0 - 360DEG
 C Interval: 22.5DEG
 Test Speed: HIGH
 Temperature:25.3°C
 Operators:
 Test Date:2023-07-13

γ Range: 0 - 90DEG
 γ Interval: 1.0DEG
 Test System:EVERFINE GO-SPEX500_V1 SYSTEM V2.00.460
 Humidity:65.0%
 Test Distance:3.080m [K=1.0000]
 Remarks:

ISOCANDELA DIAGRAM

Test:U:119.86V I:0.0647A P:7.4802W PF:0.9640 Freq:59.98Hz UTHDi:0.00% ITHDi:0.00% KDisp:0 Lamp Flux:416.593x1 lm		
NAME: ASD-CD-PWR-2D8AC-WH	TYPE:	WEIGHT:
SPEC.: 4000K 90	DIM.:	SERIAL No.:
MFR.: ASD LIGHTING CORP	SUR.:	Shielding Angle:

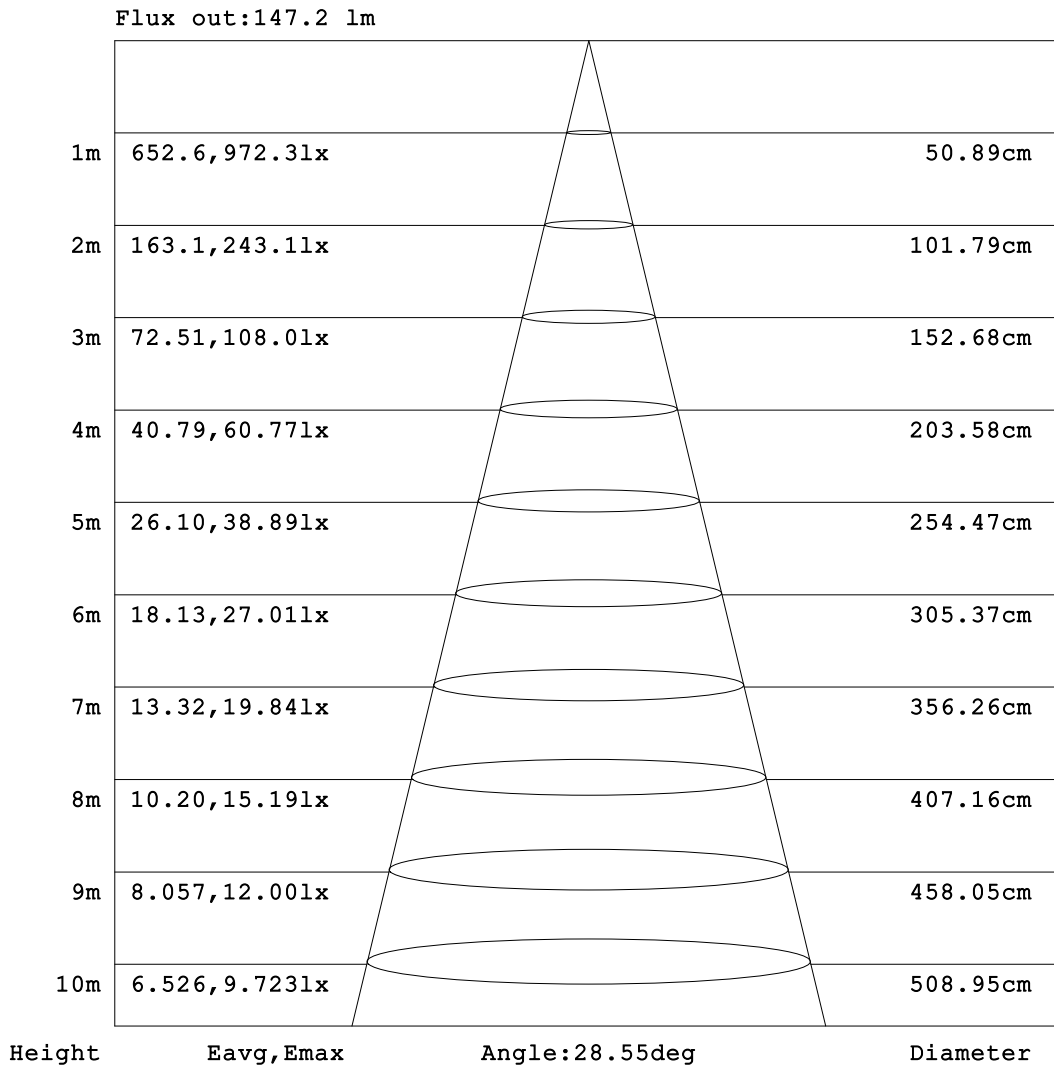


C Range: 0 - 360DEG
 C Interval: 22.5DEG
 Test Speed: HIGH
 Temperature:25.3°C
 Operators:
 Test Date:2023-07-13

γ Range: 0 - 90DEG
 γ Interval: 1.0DEG
 Test System:EVERFINE GO-SPEX500_V1 SYSTEM V2.00.460
 Humidity:65.0%
 Test Distance:3.080m [K=1.0000]
 Remarks:

AAI Figure

Test:U:119.86V I:0.0647A P:7.4802W PF:0.9640 Freq:59.98Hz UTHDi:0.00% ITHDi:0.00% KDisp:0 Lamp Flux:416.593x1 lm		
NAME: ASD-CD-PWR-2D8AC-WH	TYPE:	WEIGHT:
SPEC.: 4000K 90	DIM.:	SERIAL No.:
MFR.: ASD LIGHTING CORP	SUR.:	Shielding Angle:



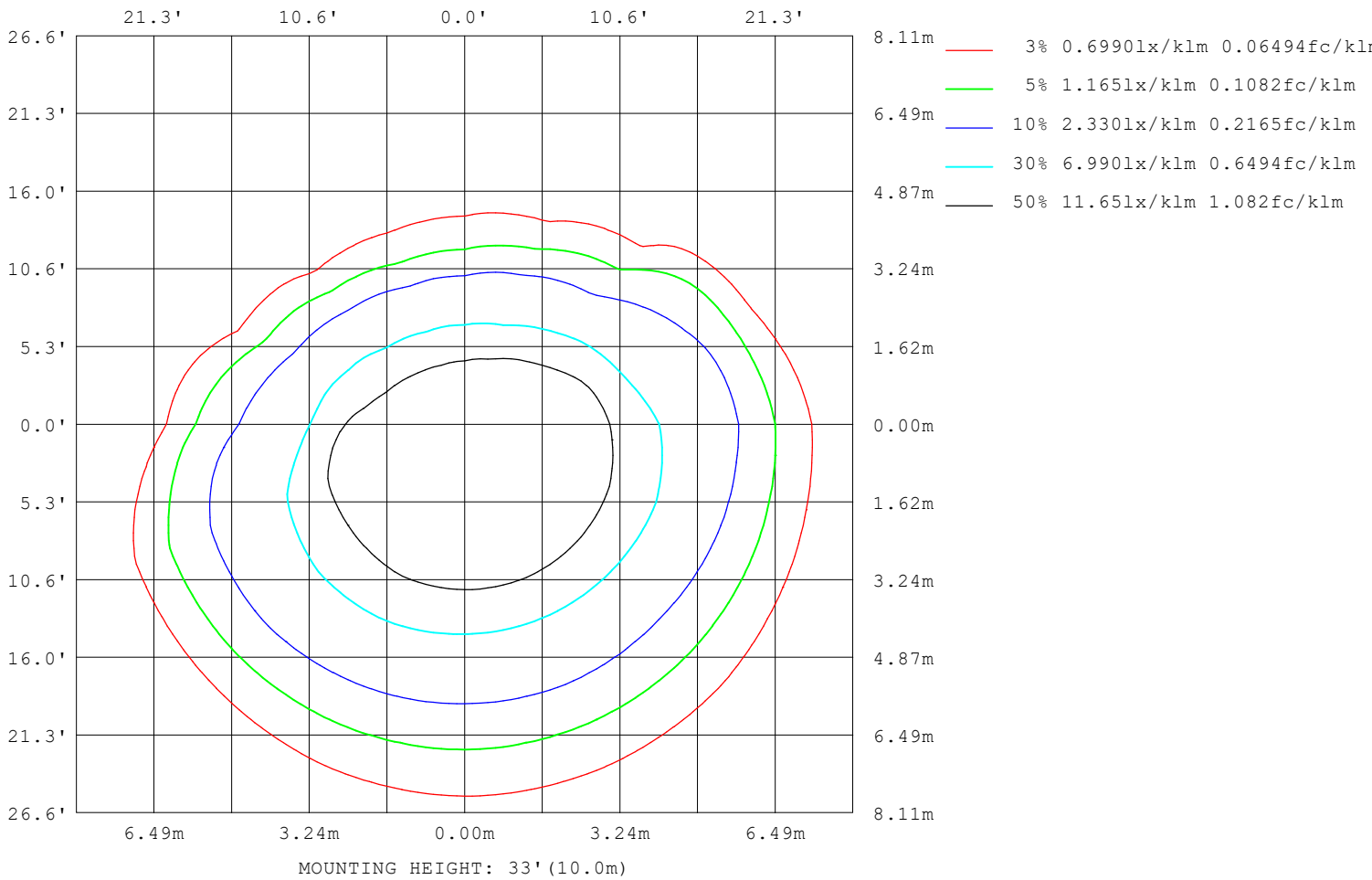
Note: The Curves indicate the illuminated area and the average illumination when the luminaire is at different distance.

C Range: 0 - 360DEG
 C Interval: 22.5DEG
 Test Speed: HIGH
 Temperature: 25.3 °C
 Operators:
 Test Date: 2023-07-13

γ Range: 0 - 90DEG
 γ Interval: 1.0DEG
 Test System: EVERFINE GO-SPEX500_V1 SYSTEM V2.00.460
 Humidity: 65.0%
 Test Distance: 3.080m [K=1.0000]
 Remarks:

ISOLUX DIAGRAM

Test:U:119.86V I:0.0647A P:7.4802W PF:0.9640 Freq:59.98Hz UTHDi:0.00% ITHDi:0.00% KDisp:0 Lamp Flux:416.593x1 lm		
NAME: ASD-CD-PWR-2D8AC-WH	TYPE:	WEIGHT:
SPEC.: 4000K 90	DIM.:	SERIAL No.:
MFR.: ASD LIGHTING CORP	SUR.:	Shielding Angle:



C Range: 0 - 360DEG
 C Interval: 22.5DEG
 Test Speed: HIGH
 Temperature:25.3°C
 Operators:
 Test Date:2023-07-13

γ Range: 0 - 90DEG
 γ Interval: 1.0DEG
 Test System:EVERFINE GO-SPEX500_V1 SYSTEM V2.00.460
 Humidity:65.0%
 Test Distance:3.080m [K=1.0000]
 Remarks:

LED Avg.L Report

Test:U:119.86V I:0.0647A P:7.4802W PF:0.9640 Freq:59.98Hz UTHDi:0.00% ITHDi:0.00% KDisp:0 Lamp Flux:416.593x1 lm		
NAME: ASD-CD-PWR-2D8AC-WH	TYPE:	WEIGHT:
SPEC.: 4000K 90	DIM.:	SERIAL No.:
MFR.: ASD LIGHTING CORP	SUR.:	Shielding Angle:

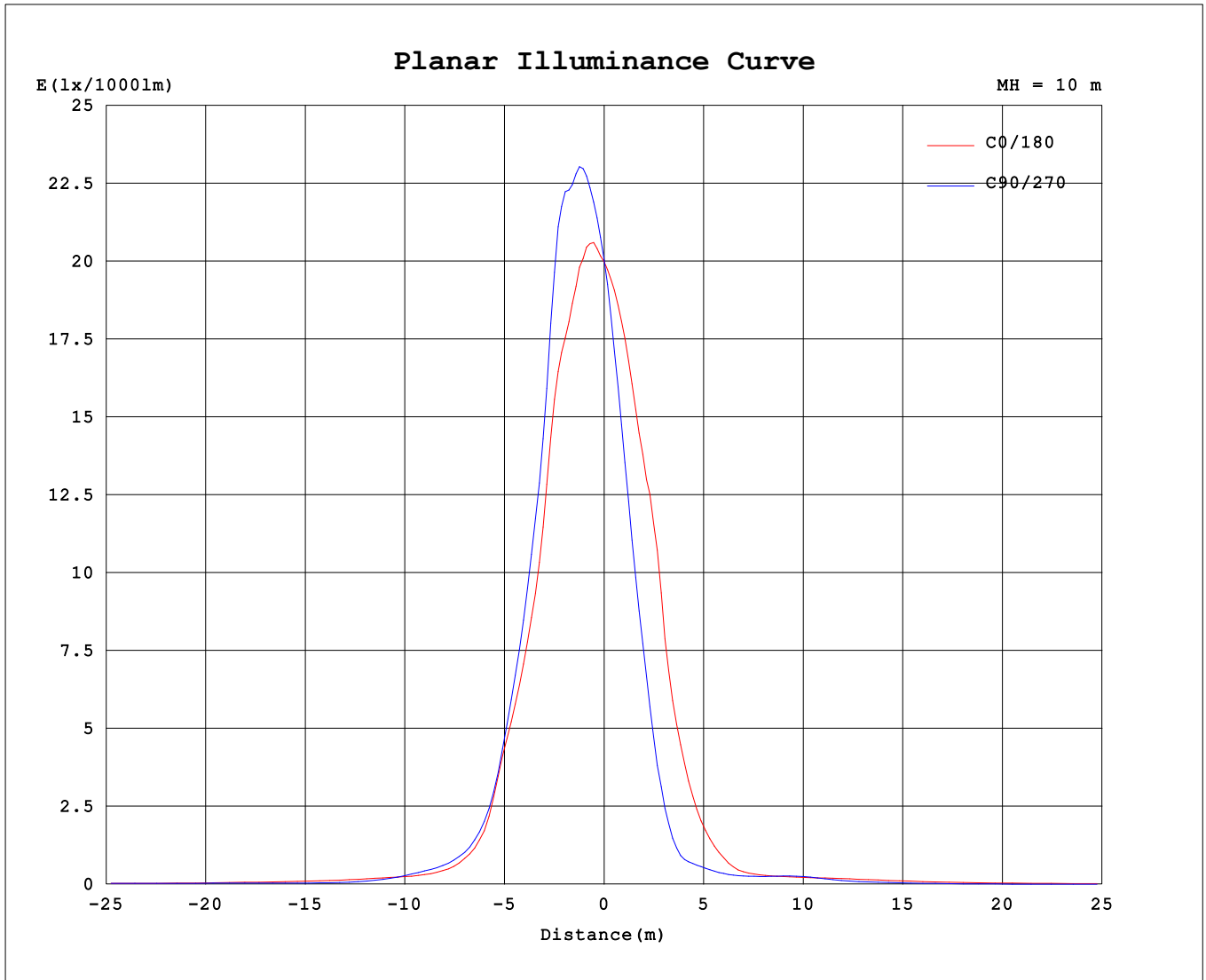
AvgL	cd/m2
L_0~180 (65) av	430
L_0~180 (75) av	550
L_0~180 (85) av	393
L_90~270 (65) av	237
L_90~270 (75) av	587
L_90~270 (85) av	1341
L_45 (65) av	310
L_45 (75) av	519
L_45 (85) av	926

Standard: GB/T 29293-2012

C Range: 0 - 360DEG
 C Interval: 22.5DEG
 Test Speed: HIGH
 Temperature:25.3℃
 Operators:
 Test Date:2023-07-13

γ Range: 0 - 90DEG
 γ Interval: 1.0DEG
 Test System:EVERFINE GO-SPEX500_V1 SYSTEM V2.00.460
 Humidity:65.0%
 Test Distance:3.080m [K=1.0000]
 Remarks:

Planar Illuminance Curve



C Range: 0 - 360DEG
 C Interval: 22.5DEG
 Test Speed: HIGH
 Temperature: 25.3 °C
 Operators:
 Test Date: 2023-07-13

γ Range: 0 - 90DEG
 γ Interval: 1.0DEG
 Test System: EVERFINE GO-SPEX500_V1 SYSTEM V2.00.460
 Humidity: 65.0%
 Test Distance: 3.080m [K=1.0000]
 Remarks:

LUMINOUS DISTRIBUTION INTENSITY DATA

Test:U:119.86V I:0.0647A P:7.4802W PF:0.9640 Freq:59.98Hz UTHDi:0.00% ITHDi:0.00% KDisp:0 Lamp Flux:416.593x1 lm		
NAME: ASD-CD-PWR-2D8AC-WH	TYPE:	WEIGHT:
SPEC.: 4000K 90	DIM.:	SERIAL No.:
MFR.: ASD LIGHTING CORP	SUR.:	Shielding Angle:

Table--1

UNIT: cd/klm

C (DEG) \ γ (DEG)	0	22.5	45	67.5	90	112.5	135	157.5	180	202.5	225	247.5	270	292.5	315	337.5			
0	1998	1992	1998	1990	2004	2019	2033	2037	1998	1992	1998	1990	2004	2019	2033	2037			
5	2069	2215	2317	2335	2299	2235	2155	2018	1828	1664	1557	1488	1493	1567	1711	1887			
10	1890	2149	2306	2358	2333	2229	2074	1841	1516	1217	1028	931	919	1018	1274	1579			
15	1592	1847	1918	1982	1998	1938	1813	1614	1190	800	565	431	423	525	792	1213			
20	1031	1192	1236	1269	1276	1270	1173	1016	619	355	200	139	141	201	332	670			
25	701	781	775	786	797	811	793	671	325	135	84.3	81.3	82.6	88.6	142	391			
30	337	351	350	373	376	385	390	347	158	71.7	61.4	58.7	58.9	63.1	80.3	198			
35	151	164	175	182	187	185	179	170	73.1	58.4	52.6	49.4	48.8	52.5	60.0	86.8			
40	86.4	103	115	119	120	114	101	89.6	59.9	56.7	57.0	57.9	57.1	54.9	54.9	61.8			
45	70.0	80.8	79.8	76.5	79.0	85.2	83.3	71.0	63.6	67.1	72.1	74.0	72.0	66.6	61.5	60.4			
50	67.1	57.2	40.5	35.0	39.3	51.6	68.4	71.0	69.0	62.8	50.4	45.6	46.0	51.4	62.0	64.5			
55	58.8	42.5	30.5	21.3	24.8	37.9	55.1	70.0	66.8	47.6	35.3	28.3	29.5	38.0	50.6	66.5			
60	57.6	46.9	35.6	27.4	29.7	41.4	53.2	64.0	55.2	36.2	24.4	16.1	17.6	27.1	40.5	57.9			
65	53.2	48.8	43.2	46.2	46.0	46.9	52.7	56.6	43.8	26.5	12.4	7.29	7.35	15.8	31.4	47.9			
70	52.0	51.7	54.8	60.3	60.2	55.2	54.8	54.2	36.1	16.8	4.35	3.18	3.29	5.84	21.9	41.7			
75	49.4	56.6	71.1	80.3	79.4	69.5	57.0	48.3	26.6	8.12	2.67	1.43	1.67	2.84	12.5	33.3			
80	34.4	56.6	75.4	85.8	83.6	73.5	52.5	33.3	13.8	2.80	1.71	0.74	0.94	1.78	3.98	15.0			
85	15.3	36.0	49.8	60.6	61.8	51.0	34.4	12.5	2.97	1.63	0.78	0.45	0.61	0.59	1.03	1.58			
90	7.24	19.4	30.4	37.5	38.2	30.4	20.2	6.13	0.25	0.32	0.42	0.49	0.49	0.42	0.32	0.20			

C Range: 0 - 360DEG
 C Interval: 22.5DEG
 Test Speed: HIGH
 Temperature: 25.3°C
 Operators:
 Test Date: 2023-07-13

γ Range: 0 - 90DEG
 γ Interval: 1.0DEG
 Test System: EVERFINE GO-SPEX500_V1 SYSTEM V2.00.460
 Humidity: 65.0%
 Test Distance: 3.080m [K=1.0000]
 Remarks: