



LED SECURITY WALLPACK

WITH PHOTOCELL

► **DESIGN & OPTIONS** - LED SECURITY WALLPACK WITH PHOTOCELL comes with a built-in dusk-to-dawn photocell that turns the fixture on/off depending on the time of day. They are also CCT adjustable, letting you set them to either 3,000K, 4,000K, or 5,000K with a simple switch. The rust and corrosion proof die-cast aluminum body provides excellent heat dissipation, while the PC clear lens ensures uniform light distribution with no glare. It comes with 120-277V and a BLACK finish.

► **INSTALLATION** - This fixture can be installed on a junction box or directly on a wall. Screws, wire nuts and all necessary installation accessories are provided. Refer to installation instructions for detailed steps.

► **APPLICATION** - This LED SECURITY WALLPACK WITH PHOTOCELL is an ideal maintenance free solution for residential and commercial applications such as: houses, garages, yards, warehouses, stores, streets, paths, porches, entryways, stairways, storages, perimeter lighting and many other outdoor areas. They are Wet location rated and can operate in temperatures between -31+104°F (-35+40°C), allowing them to be utilized in a wide variety of applications and climates.

► **ENERGY SAVING & EFFICIENCY** - Replacing an incandescent fixture with LED SECURITY WALLPACK WITH PHOTOCELL can save you 8 times as much on your current energy bill. With a lifespan of 50,000 hours, these fixtures are made to last decades under normal operation! This fixture will save you a significant amount of money in its lifetime.

► **CERTIFICATION & WARRANTY** - Buy with confidence: ASD provides a 5-year warranty along with UL certifications to guarantee top quality products and safety!

Catalog number	
Notes	
Type	



LED SECURITY WALLPACK WITH PHOTOCELL:

Model	Watts	Voltage	Dimmable	CCT	Lumens	Dimensions (LxWxH)
ASD-LSWP01-13NCC-PC	13 W	120-277 V	-	3CCT (3,000/4,000/5,000 K)	1,573/1,618/1,622 lm	8 1/8" x 5 3/8" x 2 13/16"
ASD-LSWP01-18NCC-PC	18 W	120-277 V	-	3CCT (3,000/4,000/5,000 K)	2,165/2,170/2,187 lm	8 1/8" x 5 3/8" x 2 13/16"
ASD-LSWP01-26NCC-PC	26 W	120-277 V	-	3CCT (3,000/4,000/5,000 K)	3,313/3,344/3,385 lm	8 1/8" x 5 3/8" x 2 13/16"

ORDERING INFORMATION

Model	UPC	Pcs per Carton	Carton Size	Carton Weight	GTIN 14 Carton
ASD-LSWP01-13NCC-PC	810050733694	8	12.8" x 11.7" x 9.1"	13.6 lb	30810050733695
ASD-LSWP01-18NCC-PC	810050734110	8	12.8" x 11.7" x 9.1"	13.6 lb	30810050734111
ASD-LSWP01-26NCC-PC	810050734806	8	12.8" x 11.7" x 9.1"	13.6 lb	30810050734807

For most up-to-date spec sheets please refer to asd-lighting.com

ASD LIGHTING CORP

E-mail: orders@asd-lighting.com | Web site: www.asd-lighting.com





LED SECURITY WALLPACK

WITH PHOTOCELL

PRODUCT SPECIFICATIONS:

Construction & Materials		Electrical System	
Lens	PC	Input Voltage	120-277 V
Housing	Aluminum	Max input current	ASD-LSWP01-13NCC-PC 0.13 A
Finish Color	Black		ASD-LSWP01-18NCC-PC 0.18 A
Weight	1.4 lb (0.6 kg)		ASD-LSWP01-26NCC-PC 0.26 A
Environmental System		Inrush current (Action time)	10 A (0.3 S)
Work Environment	Suitable for Wet Locations, IP43	AC input range	min 90 V max 305 V
Operating Temperature	-31°F to 104°F / -35°C to 40°C	Off State Power	0 W
L70 life	> 50,000 hrs	Power Consumption	ASD-LSWP01-13NCC-PC 13 W
Optical System			ASD-LSWP01-18NCC-PC 18 W
Luminous Flux	ASD-LSWP01-13NCC-PC		ASD-LSWP01-26NCC-PC 26 W
	ASD-LSWP01-18NCC-PC		
	ASD-LSWP01-26NCC-PC		
Color Temperature	3CCT (3,000/4,000/5,000 K)	Power Factor	> 0.9
CRI	> 70	Output voltage	30-40 V
Regular and Voluntary Certifications		Max output current	ASD-LSWP01-13NCC-PC 310 mA
5-year limited warranty	Certification UL listed		ASD-LSWP01-18NCC-PC 420 mA
			ASD-LSWP01-26NCC-PC 630 mA
		LED driver class	CC, Non-isolated

INSTALLATION GUIDE

IMPORTANT SAFETY INFORMATION:

Please read all the instructions below before installation.

- ▶ Make sure that the supply voltage corresponds to the rated product voltage.
- ▶ The product must be installed by a qualified electrician in accordance with the National Electrical Code and corresponding local codes.
- ▶ If the product is damaged, do not use it.

⚠ WARNING

RISK OF PERSONAL INJURY – READ and follow all WARNINGS and installation instructions.

Keep or give to the owner for future reference.

Risk of cuts: Wear gloves to prevent cuts or abrasions when removing from carton, handling, installing, and maintaining this product.

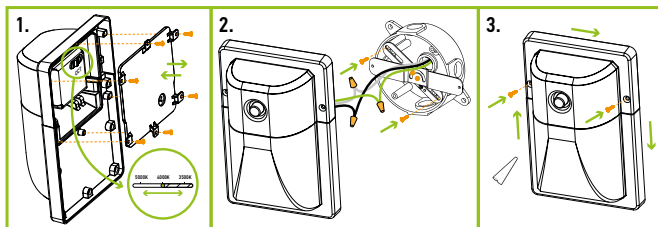
Risk of electric shock: This product must be installed in accordance with the applicable installation code by a person familiar with the construction and operation of the product and the hazards involved.

Risk of Fire: Minimum 194°F supply conductors. Consult a qualified electrician to ensure correct branch circuit conductor.

ASD® assumes no responsibility for claims arising out of improper or careless installation or handling of this product.

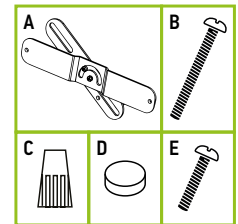
JUNCTION BOX INSTALLATION:

1. Remove the six screws on the fixture's back cover and open it. Adjust the CCT and reattach the back cover with screws.
2. Install the bracket on the junction-box with 2 screws. Use 2 screws to set the position of the bracket after adjusting it. Connect the wires using wire nuts: Black to Black, White to White, Green to Green.
3. Use 2 screws to fix the fixture on the bracket and position it flat against the wall. After the fixture is installed on the wall, for outdoor locations it is recommended to use silicone (not included) shown in the picture below.

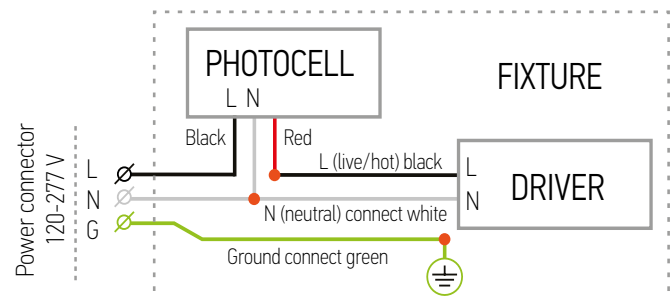


PACKAGE CONTENTS:

Description	Q-ty
LED Security Wallpack with Photocell	1
Bracket (A)	1
Screw 0.8 inch (B)	2
Wire nut (C)	3
Rubber cap (D)	1
Screw 0.4 inch (E)	2
Box	1
Cut sheet	2



ELECTRICAL SCHEMATIC DIAGRAM:



PHOTOCELL SETTINGS:



- The light is always ON when luminance is 5 lux (0.5 fc) - 15 lux (1.4 fc)
- The light is always OFF when luminance is 20 lux (1.9 fc) - 60 lux (5.6 fc)

* To disable Photocell function, simply put the rubber cap on it (included).

For most up-to-date spec sheets please refer to asd-lighting.com