



LED WALL SCONCE

► **DESIGN** - LED WALL SCONCE has a modern, multipurpose design and a stylish look with efficient lighting. Durable housing resistant to rust and impact provides many years of service. The acrylic lens with a 120° beam angle grants you even light distribution. It is designed to operate on 120V circuits.

► **COLOR SELECTABLE** - You can choose either a 3,000K warm white, 4,000K cool white or 5,000K daylight color temperature.

► **DIMMING** - Smooth triac dimming capabilities ranging from 10% to 100% with modern LED dimmers allow you to control the look and feel of your space.

► **APPLICATION** - The LED WALL SCONCE provides bright, yet smooth lighting for your family room, bedroom, hallway, corridor, or any other common area in your living space. This fixture is also Damp Locations rated.

► **ADVANTAGES** - With a lifespan of 50,000 hours, these fixtures are made to last decades under normal operation! ASD provides a 5-year limited warranty along with ETL and Energy Star certifications to guarantee top quality products and safety!

Catalog number	
Notes	
Type	



Finish: Nickel Bronze Black

Model	Size	Watts	Voltage	Dimmable	Lumens	CCT	Finish	Dimensions (LxWxH)
ASD-LWS-11-D15CC-NK	10 inch	15W	120 V	TRIAC	1,050/1,107/1,080 lm	3CCT (3,000/4,000/5,000 K)	Nickel	7" x 3-5/16" x 9-13/16"
ASD-LWS-11-D15CC-NK-2PACK	10 inch	15W	120 V	TRIAC	1,050/1,107/1,080 lm	3CCT (3,000/4,000/5,000 K)	Nickel	7" x 3-5/16" x 9-13/16"
ASD-LWS-11-D15CC-BZ	10 inch	15W	120 V	TRIAC	1,050/1,107/1,080 lm	3CCT (3,000/4,000/5,000 K)	Oil rubbed bronze	7" x 3-5/16" x 9-13/16"
ASD-LWS-11-D15CC-BK	10 inch	15W	120 V	TRIAC	1,050/1,107/1,080 lm	3CCT (3,000/4,000/5,000 K)	Black	7" x 3-5/16" x 9-13/16"

ORDERING INFORMATION

Model	UPC	Pcs. per carton	Carton size	Carton weight	GTIN 14
ASD-LWS-11-D15CC-NK	810050732260	4	18.9" x 10" x 12.4"	11.3 lbs	30810050732261
ASD-LWS-11-D15CC-NK-2PACK	810128113687	2	18.9" x 9.7" x 12.4"	11.3 lbs	10810128113684
ASD-LWS-11-D15CC-BZ	810050732277	4	18.9" x 10" x 12.4"	11.3 lbs	30810050732278
ASD-LWS-11-D15CC-BK	810128112512	4	18.9" x 10" x 12.4"	11.3 lbs	10810128112519

For most up-to-date spec sheets please refer to asd-lighting.com

ASD LIGHTING CORP

E-mail: orders@asd-lighting.com | Web site: www.asd-lighting.com





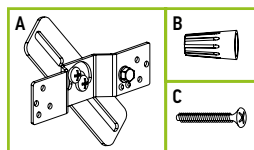
LED WALL SCONCE

PRODUCT SPECIFICATIONS:

Construction & Materials		
Housing	Steel	
Lens	Acrylic	
Finish	Nickel, Oil rubbed bronze, Black	
Weight	2.2 lbs (1 kg) for 2PACK model: 4.4 lbs (2 kg)	
Environmental system		
Work environment	Suitable for Damp Locations	
Operating temperature	-4°F to 113°F (-20°C to 45°C)	
L-70 Life	> 50,000 hrs	
Optical system		
Luminous flux	1,050/1,107/1,080 lm	
Color temperature	3CCT switch (3,000/4,000/5,000 K), 3,000 K by default	
CRI	> 80	
Electrical system		
Input voltage	120 V	
Max input current	0.19 A	
Inrush current (Action time)	0.12 A (0.1 S)	
Off state power	0W	
Power consumption	15W	
Power factor	> 0.9	
Surge protection DM/CM	1.25 kV / 1.25 kV	
Dimming range		
10-100%		
Dimming compatible controls		
Brand	Lutron TGCL-153P CTCL-153P P-PKG1W PD-6WCL	Leviton MACL-153MLH DVCL-153PR STCL-153PH
Models		DSL06 RNL06
Regular and voluntary certifications		
5-year limited warranty		
cETLus certified 4001256		

PACKAGE CONTENTS:

Description	Q-ty
LED Wall Sconce	1 (2 for 2pack)
Crossbar (A)	1
Wire nut (B)	3
Screw (C)	4
Box	1



INSTALLATION GUIDE

IMPORTANT SAFETY INFORMATION:

Please read all the instructions below before installation.

- ▶ Make sure that the supply voltage corresponds to the rated product voltage.
- ▶ The product must be installed by a qualified electrician in accordance with the National Electrical Code and corresponding local codes.
- ▶ If the product is damaged, do not use it.

⚠ WARNING

RISK OF PERSONAL INJURY – READ and follow all WARNINGS and installation instructions. Keep or give to the owner for future reference.

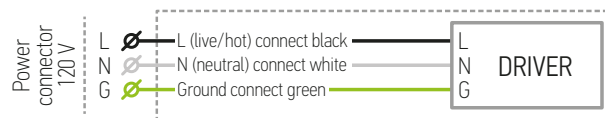
Risk of cuts: Wear gloves to prevent cuts or abrasions when removing from carton, handling, installing, and maintaining this product.

Risk of electric shock: This product must be installed in accordance with the applicable installation code by a person familiar with the construction and operation of the product and the hazards involved.

Risk of Fire: Minimum 194°F supply conductors. Consult a qualified electrician to ensure correct branch circuit conductor.

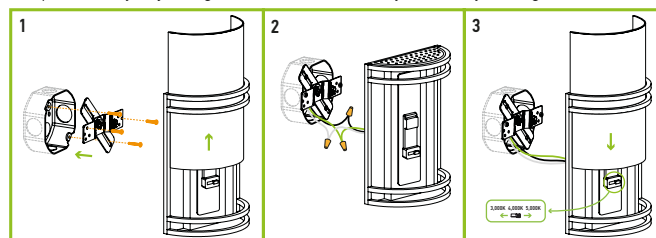
ASD® assumes no responsibility for claims arising out of improper or careless installation or handling of this product.

ELECTRICAL SCHEMATIC DIAGRAM:



INSTALLATION STEPS:

1. Slide the acrylic lens up and remove it. Attach the Crossbar to the Outlet Box with two mounting screws. Thread the other two screws into the appropriate holes of the Crossbar.
2. Connect the wires: Black to Black, White to White, Ground to Ground. Secure the connection with wire nuts. Carefully tuck all the wires into the Outlet box.
3. Put the fixture back plate to mounting surface allowing mounting screws to protrude through keyhole slots and tighten it securely. Choose preferred color temperature by adjusting the switch. Fix the acrylic lens by sliding it down.



For most up-to-date spec sheets please refer to asd-lighting.com