



LED DOUBLE RING FLUSHMOUNT

► **DESIGN & OPTIONS** - LED DOUBLE RING FLUSHMOUNT has a modern, multipurpose design and a stylish look with efficient lighting. It provides smooth dimming capabilities ranging from 100% to 10% with modern LED dimmers. The 120° beam angle grants you smooth and even lighting. It is also CCT adjustable, letting you set it to either 3,000K, 4,000K or 5,000K with a simple switch. Models with a built-in bi-level microwave motion sensor and battery back-up are also available. Sensor can be programmed via dip switches. The built-in battery back-up ensures 90 min of power. It comes with a 120V or 120-277V, in 10", 12", 14", 16" and 18" with either a BRONZE or BRUSHED NICKEL finish.

► **INSTALLATION** - Installation is quick and easy: just attach the mounting bracket to the outlet box, connect the wires and fix the lamp body on the mounting bracket. Screws, wire nuts and all installation accessories are provided. Refer to install instructions for detailed steps.

► **APPLICATION** - The LED DOUBLE RING FLUSHMOUNT provides bright, yet smooth lighting for your family room, bedroom, hallway, corridor, or any other common area in your living space. It can be used as an additional light to an already existing ceiling light as well. This fixture is also Damp location rated.

► **ENERGY SAVING & EFFICIENCY** - Replacing an incandescent fixture with LED DOUBLE RING FLUSHMOUNT can save you 8 times as much on your current energy costs. With a lifespan of 50,000 hours, these fixtures are made to last decades with normal operation! This fixture will save you a significant amount of money in its lifetime.

► **CERTIFICATION & WARRANTY** - Buy with confidence: ASD provides a 5-year warranty along with ETL and ENERGY STAR certifications to guarantee top quality products and safety!

Top US certifications allow participation in rebates; please check the rebate programs available in your state.

Catalog number	
Notes	
Type	



LED DOUBLE RING FLUSHMOUNT:

Model	Size	Watts	Voltage	Dimmable	Lumens	CCT	Finish	Dimensions (LxWxH)	Options
ASD-LFMDR-10D16CC-NK	10 inch	16 W	120 V	TRIAC	1,150 lm	3CCT (3,000/4,000/5,000 K)	Brushed Nickel	10 3/8" x 10 3/8" x 3 1/2"	-
ASD-LFMDR-10D16CC-BZ	10 inch	16 W	120 V	TRIAC	1,150 lm	3CCT (3,000/4,000/5,000 K)	Oil Rubbed Bronze	10 3/8" x 10 3/8" x 3 1/2"	-
ASD-LFMDR-12D15CC-NK	12 inch	15 W	120 V	TRIAC	1,150 lm	3CCT (3,000/4,000/5,000 K)	Brushed Nickel	11 7/8" x 11 7/8" x 3 1/8"	-
ASD-LFMDR-12D15CC-BZ	12 inch	15 W	120 V	TRIAC	1,150 lm	3CCT (3,000/4,000/5,000 K)	Oil Rubbed Bronze	11 7/8" x 11 7/8" x 3 1/8"	-
ASD-LFMDR-12D20CC-NK	12 inch	20 W	120 V	TRIAC	1,400 lm	3CCT (3,000/4,000/5,000 K)	Brushed Nickel	11 7/8" x 11 7/8" x 3 1/8"	-
ASD-LFMDR-14D21CC-NK	14 inch	21 W	120 V	TRIAC	1,500 lm	3CCT (3,000/4,000/5,000 K)	Brushed Nickel	14" x 14" x 3 5/8"	-
ASD-LFMDR-14D21CC-BZ	14 inch	21 W	120 V	TRIAC	1,500 lm	3CCT (3,000/4,000/5,000 K)	Oil Rubbed Bronze	14" x 14" x 3 5/8"	-
ASD-LFMDR-16D24CC-NK	16 inch	24 W	120 V	TRIAC	1,700 lm	3CCT (3,000/4,000/5,000 K)	Brushed Nickel	15 3/4" x 15 3/4" x 3 3/4"	-
ASD-LFMDR-16D24CC-BZ	16 inch	24 W	120 V	TRIAC	1,700 lm	3CCT (3,000/4,000/5,000 K)	Oil Rubbed Bronze	15 3/4" x 15 3/4" x 3 3/4"	-
ASD-LFMDR-18D28CC-NK	18 inch	28 W	120 V	TRIAC	1,960 lm	3CCT (3,000/4,000/5,000 K)	Brushed Nickel	17 3/4" x 17 3/4" x 4"	-
ASD-LFMDR-18D28CC-BZ	18 inch	28 W	120 V	TRIAC	1,960 lm	3CCT (3,000/4,000/5,000 K)	Oil Rubbed Bronze	17 3/4" x 17 3/4" x 4"	-
LFMDR-MS WITH MOTION SENSOR									
ASD-LFMDR-MV-12N15CC-MS-NK	12 inch	15 W	120-277 V	-	1,050 lm	3CCT (3,000/4,000/5,000 K)	Brushed Nickel	12" x 12" x 3 1/8"	Motion sensor
ASD-LFMDR-MV-14N21CC-MS-NK	14 inch	21 W	120-277 V	-	1,500 lm	3CCT (3,000/4,000/5,000 K)	Brushed Nickel	14" x 14" x 3 1/2"	Motion sensor
LFMDR-EM WITH BATTERY BACK-UP									
ASD-LFMDR-MV-12D15CC-EM-NK	12 inch	15 W	120-277 V	TRIAC	1,050 lm	3CCT (3,000/4,000/5,000 K)	Brushed Nickel	11 7/8" x 11 7/8" x 4 1/4"	6W Battery back up
ASD-LFMDR-MV-14D21CC-EM-NK	14 inch	21 W	120-277 V	TRIAC	1,470 lm	3CCT (3,000/4,000/5,000 K)	Brushed Nickel	13 3/4" x 13 3/4" x 4 3/4"	12W Battery back up
ASD-LFMDR-MV-16D24CC-EM-NK	16 inch	24 W	120-277 V	TRIAC	1,680 lm	3CCT (3,000/4,000/5,000 K)	Brushed Nickel	15 3/4" x 15 3/4" x 4 3/4"	12W Battery back up
ASD-LFMDR-MV-18D28CC-EM-NK	18 inch	28 W	120-277 V	TRIAC	2,000 lm	3CCT (3,000/4,000/5,000 K)	Brushed Nickel	17 3/4" x 17 3/8" x 5 1/8"	12W Battery back up

For most up-to-date spec sheets please refer to asd-lighting.com



LED DOUBLE RING FLUSHMOUNT

PRODUCT SPECIFICATIONS:

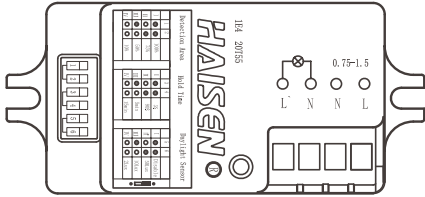
Construction & Materials							
Lens	White Acrylic						
Housing	Steel						
Finish Color	Brushed Nickel, Oil Rubbed Bronze						
Weight	ASD-LFMDR-10D16CC-NK	1.3 lb (0.6 kg)	ASD-LFMDR-14D21CC-NK	2.5 lb (1.1 kg)	ASD-LFMDR-MV-12N15CC-MS-NK	1.8 lb (0.8 kg)	
	ASD-LFMDR-10D16CC-BZ		ASD-LFMDR-14D21CC-BZ		ASD-LFMDR-MV-14N21CC-MS-NK	2.6 lb (1.2 kg)	
	ASD-LFMDR-12D15CC-NK	1.7 lb (0.8 kg)	ASD-LFMDR-16D24CC-NK	3 lb (1.4 kg)	ASD-LFMDR-MV-12D15CC-EM-NK	3.3 lb (1.5 kg)	
	ASD-LFMDR-12D15CC-BZ		ASD-LFMDR-16D24CC-BZ		ASD-LFMDR-MV-14D21CC-EM-NK	4.1 lb (1.9 kg)	
	ASD-LFMDR-12D20CC-NK		ASD-LFMDR-18D28CC-NK		ASD-LFMDR-MV-16D24CC-EM-NK	4.9 lb (2.2 kg)	
			4.3 lb (2 kg)		ASD-LFMDR-MV-18D28CC-EM-NK	6.6 lb (3 kg)	
Environmental System							
Work Environment	Suitable for Damp Locations						
Operating Temperature	-4°F to 131°F / -20°C to 55°C						
L70 life	> 50,000 hrs						
Optical System							
Luminous Flux	ASD-LFMDR-10D16CC-NK	1,150 lm	ASD-LFMDR-14D21CC-NK	1,500 lm	ASD-LFMDR-MV-12N15CC-MS-NK	1,050 lm	
	ASD-LFMDR-10D16CC-BZ		ASD-LFMDR-14D21CC-BZ		ASD-LFMDR-MV-14N21CC-MS-NK	1,500 lm	
	ASD-LFMDR-12D15CC-NK	1,050 lm	ASD-LFMDR-16D24CC-NK	1,700 lm	ASD-LFMDR-MV-12D15CC-EM-NK	1,050 lm	
	ASD-LFMDR-12D15CC-BZ		ASD-LFMDR-16D24CC-BZ		ASD-LFMDR-MV-14D21CC-EM-NK	1,470 lm	
		1,400 lm	ASD-LFMDR-18D28CC-NK	1,960 lm	ASD-LFMDR-MV-16D24CC-EM-NK	1,680 lm	
		ASD-LFMDR-18D28CC-BZ	ASD-LFMDR-MV-18D28CC-EM-NK		2,000 lm		
Color Temperature	3CCT (3,000/4,000/5,000 K)						
CRI	> 80						
Electrical System							
Input Voltage	120 V			120-277 V			
Max input current	ASD-LFMDR-10D16CC-NK	0.175 A	ASD-LFMDR-14D21CC-NK	0.2 A	ASD-LFMDR-MV-12N15CC-MS-NK	0.15 A	
	ASD-LFMDR-10D16CC-BZ		ASD-LFMDR-14D21CC-BZ		ASD-LFMDR-MV-14N21CC-MS-NK	0.35 A	
	ASD-LFMDR-12D15CC-NK	0.15 A	ASD-LFMDR-16D24CC-NK	0.25 A	ASD-LFMDR-MV-12D15CC-EM-NK	0.3 A	
	ASD-LFMDR-12D15CC-BZ		ASD-LFMDR-16D24CC-BZ		ASD-LFMDR-MV-14D21CC-EM-NK	0.4 A	
	ASD-LFMDR-12D20CC-NK		ASD-LFMDR-18D28CC-NK		ASD-LFMDR-MV-16D24CC-EM-NK	0.5 A	
		ASD-LFMDR-18D28CC-BZ		ASD-LFMDR-MV-18D28CC-EM-NK	0.5 A		
Inrush current (Action time)	ASD-LFMDR-10D16CC-NK	0.13 A (0.1 S)	ASD-LFMDR-14D21CC-NK	0.175 A (0.1 S)	ASD-LFMDR-MV-12N15CC-MS-NK	0.12 A (0.1 S)	
	ASD-LFMDR-10D16CC-BZ		ASD-LFMDR-14D21CC-BZ		ASD-LFMDR-MV-14N21CC-MS-NK	0.17 A (0.1 S)	
	ASD-LFMDR-12D15CC-NK	0.125 A (0.1 S)	ASD-LFMDR-16D24CC-NK	0.2 A (0.1 S)	ASD-LFMDR-MV-12D15CC-EM-NK	0.12 A (0.1 S)	
	ASD-LFMDR-12D15CC-BZ		ASD-LFMDR-16D24CC-BZ		ASD-LFMDR-MV-14D21CC-EM-NK	0.2 A (0.1 S)	
		0.167 A (0.1 S)	ASD-LFMDR-18D28CC-NK	0.23 A (0.1 S)	ASD-LFMDR-MV-16D24CC-EM-NK	0.2 A (0.1 S)	
		ASD-LFMDR-18D28CC-BZ	ASD-LFMDR-MV-18D28CC-EM-NK		0.25 A (0.1 S)		
AC input range	min 108 V max 132 V		for EM models: min 100 V max 277 V		for MS models: min 120 V max 277 V		
Off State Power	0 W						
Power Consumption	ASD-LFMDR-10D16CC-NK	16 W	ASD-LFMDR-14D21CC-NK	21 W	ASD-LFMDR-MV-12N15CC-MS-NK	15 W	
	ASD-LFMDR-10D16CC-BZ		ASD-LFMDR-14D21CC-BZ		ASD-LFMDR-MV-14N21CC-MS-NK	21 W	
	ASD-LFMDR-12D15CC-NK	15 W	ASD-LFMDR-16D24CC-NK	24 W	ASD-LFMDR-MV-12D15CC-EM-NK	15 W	
	ASD-LFMDR-12D15CC-BZ		ASD-LFMDR-16D24CC-BZ		ASD-LFMDR-MV-14D21CC-EM-NK	21 W	
	ASD-LFMDR-12D20CC-NK		ASD-LFMDR-18D28CC-NK		ASD-LFMDR-MV-16D24CC-EM-NK	24 W	
		ASD-LFMDR-18D28CC-BZ	28 W	ASD-LFMDR-MV-18D28CC-EM-NK	28 W		
Power Factor	> 0.9						
Output voltage	ASD-LFMDR-10D16CC-NK	-	ASD-LFMDR-14D21CC-NK	-	ASD-LFMDR-MV-12N15CC-MS-NK	30-38 V	
	ASD-LFMDR-10D16CC-BZ		ASD-LFMDR-14D21CC-BZ		ASD-LFMDR-MV-14N21CC-MS-NK		
	ASD-LFMDR-12D15CC-NK		ASD-LFMDR-16D24CC-NK		ASD-LFMDR-MV-12D15CC-EM-NK		
	ASD-LFMDR-12D15CC-BZ		ASD-LFMDR-16D24CC-BZ		ASD-LFMDR-MV-14D21CC-EM-NK	25-37 V	
	ASD-LFMDR-12D20CC-NK		ASD-LFMDR-18D28CC-NK		ASD-LFMDR-MV-16D24CC-EM-NK		
	ASD-LFMDR-18D28CC-BZ	ASD-LFMDR-MV-18D28CC-EM-NK					
Max output current	ASD-LFMDR-10D16CC-NK	-	ASD-LFMDR-14D21CC-NK	-	ASD-LFMDR-MV-12N15CC-MS-NK	350 mA	
	ASD-LFMDR-10D16CC-BZ		ASD-LFMDR-14D21CC-BZ		ASD-LFMDR-MV-14N21CC-MS-NK	580 mA	
	ASD-LFMDR-12D15CC-NK		ASD-LFMDR-16D24CC-NK		ASD-LFMDR-MV-12D15CC-EM-NK	350 mA	
	ASD-LFMDR-12D15CC-BZ		ASD-LFMDR-16D24CC-BZ		ASD-LFMDR-MV-14D21CC-EM-NK	600 mA	
	ASD-LFMDR-12D20CC-NK		ASD-LFMDR-18D28CC-NK		ASD-LFMDR-MV-16D24CC-EM-NK	700 mA	
		ASD-LFMDR-18D28CC-BZ	ASD-LFMDR-MV-18D28CC-EM-NK				
LED driver class	DOB			Class 2			
Dimming range			Dimming compatible controls				
10-100%			Brand	Lutron			
Regular and Voluntary Certifications			Models	MACL-153MLH	TGCL-153P	P-PKG1W	Leviton
5-year limited warranty				DVCL-153PR	CTCL-153P	PD-6WCL	DSL06
ETL certified 4001256				Energy Star certified (except EM models)	STCL-153PH		

For most up-to-date spec sheets please refer to asd-lighting.com




LED DOUBLE RING FLUSHMOUNT

MOTION SENSOR INFORMATION



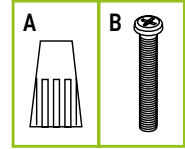
Specifications	Model HD401S 1
Operating voltage	120-277 V
Switching capacity	Max. 200 W (Control gear) Max. 400 W (Incandescent lamp)
Standby power	< 1 W
Detection area	10% / 50% / 75% / 100%
Hold-time	5 s / 90 s / 5 min / 15 min
Daylight threshold	2Lx (0.2Fc) / 10Lx (0.9Fc) / 50Lx (4.7Fc) / Disable
Microwave frequency	5.8 GHz ± 75 MHz
Microwave power	< 0.3 mW
Interfaces	4-pole pluggable clamp terminal (L,N,N,L) for 1.5 mm 2 cable
Mounting height	Max. 39.4 ft (11.9 m)
Detection range	Max. 52.5 x 39.4 ft (15.8 x 11.9 m) (ceiling mounted)
Operating temperature	-4 +158°F (-20 +70°C)
IP rating	IP20
Size	3.2 x 1.4 x 0.9 inch



RF interference may affect the operation of this sensor

PACKAGE CONTENTS:

Description	Q-ty
LED Double Ring Flushmount	1
Wire nut (A)	3
Screw (B)	2
Box	1
Cut sheet	2



DEFAULT SETTING:

Detection Area	Hold Time	Daylight Sensor	Stand-by Period	Stand-by Dim Level
100 %	10 min	Disable	0 S	10 %

ON	1	2	
I	ON	ON	100%
II	-	ON	75%
III	ON	-	50%
IV	-	-	10%

ON	3	4	
I	ON	ON	5s
II	-	ON	90s
III	ON	-	5min
IV	-	-	15min

ON	5	6	
I	ON	ON	Disable
II	-	ON	50Lx (4.7Fc)
III	ON	-	10Lx (0.9Fc)
IV	-	-	2Lx (0.2Fc)

Detection Area

Detection area means detection coverage. It can be adjusted by combining DIP switches for specific application.

Hold Time

Hold-time is the time period the light will be ON after the last detection.

Daylight threshold

Daylight sensor priors to motion sensor. Set threshold for specific needs. If set on "Disable" only the motion sensor will work.

BACK-UP BATTERY INFORMATION

Model	Battery Watts	Lumens in emergency mode	Battery Capacity	Emergency Mode	Charging time
ASD-LFMDR-MV-12D15CC-EM-NK	6 W	644 lm	2,200 mAh	90 > min	8 hours
ASD-LFMDR-MV-14D21CC-EM-NK	12 W	826 lm	2,200 mAh	90 > min	8 hours
ASD-LFMDR-MV-16D24CC-EM-NK	12 W	826 lm	2,200 mAh	90 > min	8 hours
ASD-LFMDR-MV-18D28CC-EM-NK	12 W	826 lm	2,200 mAh	90 > min	8 hours

BATTERY BACK-UP OPERATION:

Operating Condition	Charging	Emergency mode	Test Switch
 ON	 FLICKERING	 OFF	

- Indicator light is ON: Battery back-up fully charged and device is using circuit power.
- Indicator light is FLICKERING: Battery back-up recharging and device is using circuit power.
- Indicator light is OFF: Device is using battery back-up power.
- In order to test the battery back-up press the test switch one time. To turn off the emergency power state press test switch one more time.

Specifications	GL-INR18650-3S1P-2200mAh-11.1V
Input Voltage	100-277 V 50/60 Hz
AC Input Current	110 mA max.
AC Input Power Rating	5.0 W max.
Output Current and Voltage	360 mA 36 Vdc
Output Power	6 W 12 W
Lumens	400 lm 800 lm
Emergency Time	min 90 minutes
Warranty	5 Years
Indicator Light	Illuminated Test Switch
Battery	Li-ion battery - 11.1 V / 4000 mAh
Battery Charging Current	440 mA
Charging Time	5 Hours
Temperature Rating (Ambient)	32°F to 113°F (0°C to +45°C)

For most up-to-date spec sheets please refer to asd-lighting.com



LED DOUBLE RING FLUSHMOUNT

INSTALLATION GUIDE

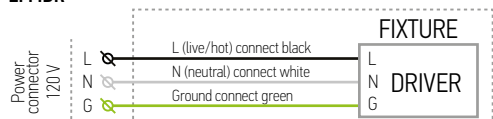
IMPORTANT SAFETY INFORMATION:

Please read all the instructions below before installation.

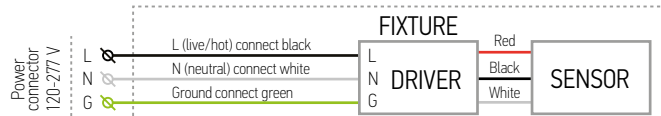
- ▶ Make sure that the supply voltage corresponds to the rated product voltage.
- ▶ The product must be installed by a qualified electrician in accordance with the National Electrical Code and corresponding local codes.
- ▶ If the product is damaged, do not use it.

ELECTRICAL SCHEMATIC DIAGRAM:

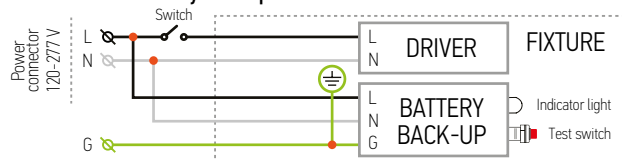
LFMDR



LFMDR-MS with motion sensor



LFMDR-EM with battery back-up



⚠ WARNING

RISK OF PERSONAL INJURY – READ and follow all WARNINGS and installation instructions.

Keep or give to the owner for future reference.

Risk of cuts: Wear gloves to prevent cuts or abrasions when removing from carton, handling, installing, and maintaining this product.

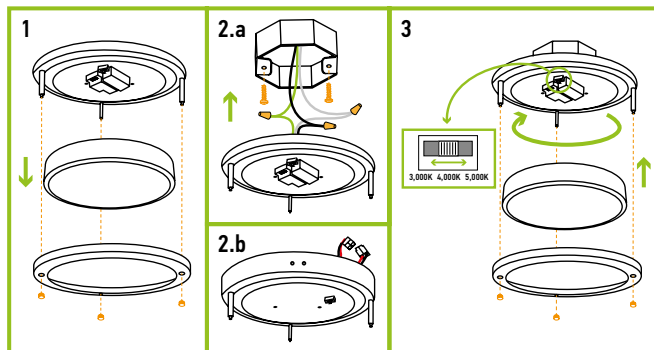
Risk of electric shock: This product must be installed in accordance with the applicable installation code by a person familiar with the construction and operation of the product and the hazards involved.

Risk of Fire: Minimum 194°F supply conductors. Consult a qualified electrician to ensure correct branch circuit conductor.

ASD® assumes no responsibility for claims arising out of improper or careless Installation or handling of this product.

INSTALLATION STEPS:

1. Unscrew three cap nuts counter-clockwise, remove the metal ring and the lens.
- 2.a. Attach two screws to the outlet box. Connect the wires: Black to Black, White to White, Ground to Ground. Carefully tuck all the wires back into the outlet box.
- 2.b. In fixtures with Emergency battery connect the LED Emergency controller to the battery back-up.
3. Place the fixture pan over the outlet box and feed fixture screws through keyhole slots. Rotate the fixture pan clockwise until screws lock into the narrow end of the keyhole slots and tighten screws firmly. Choose either 3,000K, 4,000K or 5,000K with a simple switch. Secure the lens and the metal ring to the fixture pan using three cap nuts.



ORDERING INFORMATION

Model	UPC	Pcs. per Carton	Carton Size	Carton Weight	GTIN-14
ASD-LFMDR-10D16CC-NK	810050731706	4	16.3" x 12" x 12.2"	9.9 lb	10810050731703
ASD-LFMDR-10D16CC-BZ	810050731713	4	16.3" x 12" x 12.2"	9.9 lb	10810050731710
ASD-LFMDR-12D15CC-NK	810050735728	4	15.6" x 13.2" x 13.4"	11.7 lb	10810050735725
ASD-LFMDR-12D15CC-BZ	810050736077	4	15.6" x 13.2" x 13.4"	11.7 lb	10810050736074
ASD-LFMDR-12D20CC-NK	810050735735	4	15.6" x 13.2" x 13.4"	11.7 lb	10810050735732
ASD-LFMDR-14D21CC-NK	810050736084	4	15.9" x 15.9" x 15.7"	16.4 lb	10810050736081
ASD-LFMDR-14D21CC-BZ	810050736091	4	15.9" x 15.9" x 15.7"	16.4 lb	10810050736098
ASD-LFMDR-16D24CC-NK	810050736107	4	17.7" x 17.5" x 16.5"	19.2 lb	10810050736104
ASD-LFMDR-16D24CC-BZ	810050736114	4	17.7" x 17.5" x 16.5"	19.2 lb	10810050736111
ASD-LFMDR-18D28CC-NK	810050735551	4	20.1" x 18.3" x 20.1"	27.5 lb	10810050735558
ASD-LFMDR-18D28CC-BZ	810050735940	4	20.1" x 18.3" x 20.1"	27.5 lb	10810050735947
LFMDR-MS WITH MOTION SENSOR					
ASD-LFMDR-MV-12N15CC-MS-NK	810050733519	4	15.4" x 13.4" x 13.4"	12.1 lb	10810050733516
ASD-LFMDR-MV-14N21CC-MS-NK	810050733526	4	15.9" x 15.9" x 15.9"	16.9 lb	10810050733523
LFMDR-EM WITH BATTERY BACK-UP					
ASD-LFMDR-MV-12D15CC-EM-NK	819201027989	4	13.6" x 13.6" x 22"	19.4 lb	10819201027986
ASD-LFMDR-MV-14D21CC-EM-NK	819201027996	4	15.9" x 15.9" x 22"	24.2 lb	10819201027993
ASD-LFMDR-MV-16D24CC-EM-NK	819201028009	4	23.4" x 17.9" x 17.9"	31.3 lb	10819201028006
ASD-LFMDR-MV-18D28CC-EM-NK	819201028016	4	24.8" x 20.5" x 20.5"	41.2 lb	10819201028013

For most up-to-date spec sheets please refer to asd-lighting.com