



LED SWIVEL HARDSCAPE LIGHT

► **DESIGN** - LED SWIVEL HARDSCAPE LIGHT has 12V low-voltage design ensuring its safety when used outdoors (transformer is not included). Swivel light head allows you to adjust the illumination angle from 0-90 degree. Durable waterproof housing is resistant to rust and can be used outdoor for all weather conditions. The PC lens with a 115° beam angle grants you even light distribution.

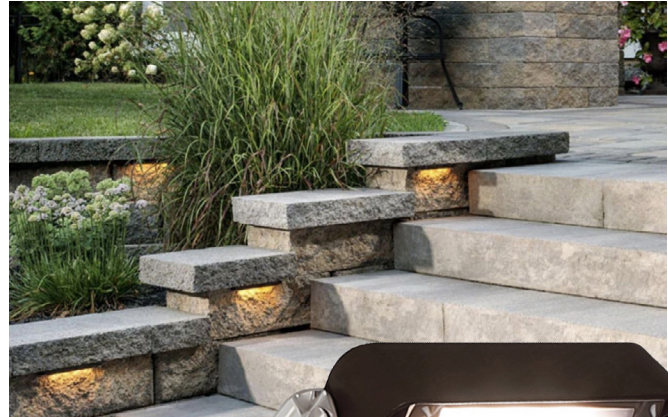
► **COLOR SELECTABLE** - You can choose either a 2,200K soft warm white, 2,700K soft white, 3,000K warm white, 4,000K cool white, or 5,000K daylight color temperature.

► **CUTTABLE DESIGN** - Adjustable width by cutting along the dotted line in accordance with your needs.

► **APPLICATION** - This fixture is rated for Wet Locations. It is perfect for mounting between hardscapes like retaining walls, barbecue fire pits, bricks, landscape steps, masonry walls, etc.

► **ADVANTAGES** - With a lifespan of 50,000 hours, these fixtures are made to last decades under normal operation! ASD provides a 5-year limited warranty along with ETL certification to guarantee top quality products and safety!

Catalog number	
Notes	
Type	



Model	Size	Watts	Voltage	Dimmable	Lumens	CCT	Finish	Dimensions (LxWxH)	Cord
ASD-HSLS-4N2BR-4P	4 inch	2W	12 V	-	104/117/121/131/135 lm	5CCT (2,200/2,700/3,000/4,000/5,000 K)	Bronze	4-1/8" x 2-15/16" x 7/8"	9.16 ft
ASD-HSLS-7N5BR-4P	7 inch	4.5W	12 V	-	235/261/268/290/301 lm	5CCT (2,200/2,700/3,000/4,000/5,000 K)	Bronze	6-15/16" x 2-15/16" x 7/8"	9.16 ft
ASD-HSLS-12N5BR-2P	12 inch	5W	12 V	-	283/302/308/324/334 lm	5CCT (2,200/2,700/3,000/4,000/5,000 K)	Bronze	12-3/16" x 2-15/16" x 7/8"	9.16 ft

ORDERING INFORMATION

Model	UPC	Pcs. per carton	Carton size	Carton weight	GTIN 14
ASD-HSLS-4N2BR-4P	810128112741	2	9.3" x 7.3" x 9.1"	4 lbs	10810128112748
ASD-HSLS-7N5BR-4P	810128112758	2	9.3" x 7.3" x 9.1"	6 lbs	10810128112755
ASD-HSLS-12N5BR-2P	810128112765	2	14.2" x 8.5" x 4.9"	4 lbs	10810128112762

For most up-to-date spec sheets please refer to asd-lighting.com

ASD LIGHTING CORP

E-mail: orders@asd-lighting.com | Web site: www.asd-lighting.com





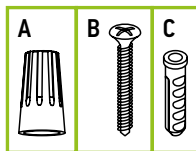
LED SWIVEL HARDSCAPE LIGHT

PRODUCT SPECIFICATIONS:

Construction & Materials		
Housing	Aluminum	
Lens	PC	
Finish	Bronze	
Weight	ASD-HSLS-4N2BR-4P	2 lbs (0.9 kg)
	ASD-HSLS-7N5BR-4P	
	ASD-HSLS-12N5BR-2P	1 lbs (0.5 kg)
Environmental system		
Work environment	Suitable for Wet Locations	
Operating temperature	-40°F to 113°F (-40°C to 45°C)	
L-70 Life	R > 50,000 hrs	
Optical system		
Luminous flux	ASD-HSLS-4N2BR-4P	104/117/121/131/135 lm
	ASD-HSLS-7N5BR-4P	235/261/268/290/301 lm
	ASD-HSLS-12N5BR-2P	283/302/308/324/334 lm
Color temperature	5CCT switch (2,200/2,700/3,000/4,000/5,000 K), 5,000 K by default	
CRI	> 80	
Electrical system		
Input voltage	12 V	
Max input current	ASD-HSLS-4N2BR-4P	0.18 A
	ASD-HSLS-7N5BR-4P	0.41 A
	ASD-HSLS-12N5BR-2P	0.49 A
Inrush current (Action time)	ASD-HSLS-4N2BR-4P	0.18 A (0.8 S)
	ASD-HSLS-7N5BR-4P	0.41 A (0.8 S)
	ASD-HSLS-12N5BR-2P	0.49 A (0.8 S)
Off state power	0W	
Power consumption	ASD-HSLS-4N2BR-4P	2W
	ASD-HSLS-7N5BR-4P	4.5W
	ASD-HSLS-12N5BR-2P	5W
Power factor	> 0.9	
Output voltage	8-9 V	
Max output current	ASD-HSLS-4N2BR-4P	0.185 A
	ASD-HSLS-7N5BR-4P	0.416 A
	ASD-HSLS-12N5BR-2P	0.492 A
Regular and voluntary certifications		
5-year limited warranty		
cETLus certified 4001256		

PACKAGE CONTENTS:

Description	Q-ty
LED Swivel Hardscape Light	1 (2 for 2pack; 4 for 4pack)
Wire nut (A)	2
Self-taping screw (B)	2 (3 for 12 inch)
Anchor (C)	2 (3 for 12 inch)
Box	1



INSTALLATION GUIDE

IMPORTANT SAFETY INFORMATION:

Please read all the instructions below before installation.

- ▶ Make sure that the supply voltage corresponds to the rated product voltage.
- ▶ The product must be installed by a qualified electrician in accordance with the National Electrical Code and corresponding local codes.
- ▶ If the product is damaged, do not use it.

⚠ WARNING

RISK OF PERSONAL INJURY – READ and follow all WARNINGS and installation instructions. Keep or give to the owner for future reference.

Risk of cuts: Wear gloves to prevent cuts or abrasions when removing from carton, handling, installing, and maintaining this product.

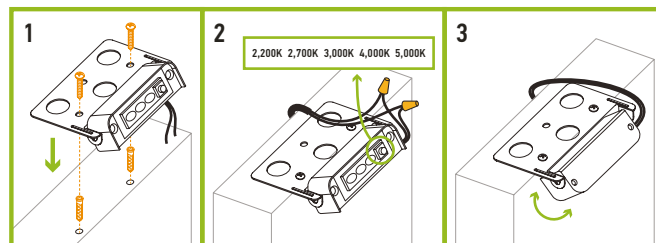
Risk of electric shock: This product must be installed in accordance with the applicable installation code by a person familiar with the construction and operation of the product and the hazards involved.

Risk of Fire: Minimum 194°F supply conductors. Consult a qualified electrician to ensure correct branch circuit conductor.

ASD® assumes no responsibility for claims arising out of improper or careless installation or handling of this product.

INSTALLATION STEPS:

1. Drill holes and insert plastic anchors. Align the fixture's mounting bracket holes with plastic anchors. Fix the fixture by screwing screws into the plastic anchors.
2. Connect the wires in accordance with wiring diagram. Choose the color temperature by pressing selection button until necessary color temperature appears.
3. Adjust the lamp head as needed.



For most up-to-date spec sheets please refer to asd-lighting.com