



# FIRE RATED LED ROUND RECESSED MINI PANEL

► **DESIGN** - FIRE RATED LED ROUND RECESSED MINI PANEL has a reinforced, heat resistant steel body, and a 2-hour fire resistance rating. This fixture has a J-box, plug & twist connector, and spring-loaded clips, making the installation process quick and easy. The acrylic lens with a 110° beam angle and CRI90+ grants you even light. It is designed to operate on 120V circuits and provides smooth triac dimming from 10% to 100%.

► Heavy duty commercial grade spring clips with increased height allow the fixture to be installed in ceilings up to 1-3/4" thick.

► **COLOR SELECTABLE** - You can choose either a 2,700K soft white, 3,000K warm white, 3,500K neutral white, 4,000K cool white, or 5,000K daylight color temperature.

► **INSTALLATION** - This fixture is Air Tight and IC rated so there is no can or any other housing required. When installed in ceilings complying to a fire rated building code (example: type-X gypsum), no additional accessories are needed. It is also Wet Locations rated.

► **ADVANTAGES** - With a lifespan of 50,000 hours, these fixtures are made to last decades under normal operation! ASD provides a 5-year limited warranty along with ETL certification to guarantee top quality products and safety!

Additionally, our fire rated fixtures are tested to comply with UL 263, ASTM E119, and CAN ULC S101.

Catalog number	
Notes	
Type	



Model	Size	Watts	Voltage	Dimmable	Lumens	CCT	Finish	Dimensions (LxH)	Airtight
ASD-JFR-4D12AC-WH	4 inch	12W	120 V	TRIAC	742/785/831/840/807 lm	5CCT (2,700/3,000/3,500/4,000/5,000 K)	White	5" x 2"	Yes
ASD-JFR-6D15AC-WH	6 inch	15W	120 V	TRIAC	1,086/1,111/1,162/1,166/1,119 lm	5CCT (2,700/3,000/3,500/4,000/5,000 K)	White	6-7/8" x 2"	Yes

## ORDERING INFORMATION

Model	UPC	Pcs. per carton	Carton size	Carton weight	GTIN 14
ASD-JFR-4D12AC-WH	810128111485	12	13.6" x 12.4" x 8.1"	13.5 lbs	10810128111482
ASD-JFR-6D15AC-WH	810128111492	12	14.8" x 14.8" x 8.1"	18.1 lbs	10810128111499

## ACCESSORIES:

Model	Description	UPC	Pcs. per carton	Carton size	Carton weight	GTIN 14 in carton
ASD-MPLR-346-FA-6PACK	New construction flat mounting plate with asymmetric round holes 3-4-6"	810050739344	4	14.4" x 9.8" x 3.2"	22.5 lbs	10810050739341
ASD-MPLR18-346-FA-6PACK	New construction flat mounting plate 18" with asymmetric round holes 3-4-6"	810128112826	4	18.9" x 9.8" x 3.2"	32.9 lbs	10810128112823
ASD-MPLR-346-FS-6PACK	New construction flat mounting plate with symmetric round holes 3-4-6"	810050739351	4	27.2" x 9.1" x 3.2"	25.2 lbs	10810050739358
ASD-MPLR-346-SC-6PACK	New construction mounting plate with round holes and sliding clips 3-4-6"	810050739337	2	17.3" x 11.9" x 13.4"	17 lbs	10810050739334
ASD-EC-10A-6PACK	Extension cord 3PIN 10"	810128110471	10	7.7" x 6.1" x 5.3"	1.8 lbs	10810128110478
ASD-EC-20A-6PACK	Extension cord 3PIN 20"	810128110488	10	7.7" x 6.1" x 7.3"	3.1 lbs	10810128110485

For most up-to-date spec sheets please refer to [asd-lighting.com](http://asd-lighting.com)



# FIRE RATED LED ROUND RECESSED MINI PANEL

## PRODUCT SPECIFICATIONS:

Construction & Materials			Electrical system		
Housing	Aluminum, Steel		Input voltage	120 V	
Lens	PC		Max input current	ASD-JFR-4D12AC-WH	0.12 A
Finish	White			ASD-JFR-6D15AC-WH	0.15 A
Weight	ASD-JFR-4D12AC-WH	0.9 lbs (0.4 kg)	Inrush current (Action time)	ASD-JFR-4D12AC-WH	5 A (0.5 S)
	ASD-JFR-6D15AC-WH	1.2 lbs (0.5 kg)		ASD-JFR-6D15AC-WH	6 A (0.5 S)
Environmental system			Off state power	0W	
Work environment	Suitable for Wet Locations		Power consumption	ASD-JFR-4D12AC-WH	12W
Operating temperature	-4°F to 104°F (-20°C to 40°C)			ASD-JFR-6D15AC-WH	15W
L-70 Life	> 50,000 hrs		Power factor	> 0.9	
Optical system			Output voltage	36 V	
Luminous flux	ASD-JFR-4D12AC-WH	742/785/831/840/807 lm	Max output current	ASD-JFR-4D12AC-WH	0.27 A
	ASD-JFR-6D15AC-WH	1,086/1,111/1,162/1,166/1,119 lm		ASD-JFR-6D15AC-WH	0.34 A
Color temperature	5CCT switch (2,700/3,000/3,500/4,000/5,000 K), 3,000 K by default		Surge protection DM/CM	2.5 kV / 2.5 kV	
CRI	> 90		Dimming range		
			10-100%		
			Dimming compatible controls		
Brand	Lutron		Leviton	Cooper	
Models	DMD-LE3-D	SFTU-5A3P	IPL06-10Z	6672	SI06P
	CTCL-153P	PD-6WCL	DSL06	6621	
	DVCL-153P	DV-600P			
Regular and voluntary certifications			5-year limited warranty		
			cETLus certified 5003560		

## PACKAGE CONTENTS:

Description	Q-ty
Fire rated LED Round Recessed Mini Panel	1
Template for 4 or 6 inch (A)	1
Box	1



## ACCESSORIES (sold separately):

**New construction flat mounting plate with asymmetric round holes 3-4-6"**  
ASD-MPLR-346-FA-6PACK

**New construction flat mounting plate 18" with asymmetric round holes 3-4-6"**  
ASD-MPLR18-346-FA-6PACK

**New construction flat mounting plate with symmetric round holes 3-4-6"**  
ASD-MPLR-346-FS-6PACK

**New construction mounting plate with round holes and sliding clips 3-4-6"**  
ASD-MPLR-346-SC-6PACK

**Extension cord 3PIN**

**10"** ASD-EC-10A-6PACK      **20"** ASD-EC-20A-6PACK

## ACCESSORY COMPATIBILITY LIST:

Models	Accessories
	<p><b>New construction flat mounting plate with asymmetric round holes 3-4-6"</b> ASD-MPLR-346-FA-6PACK</p> <p><b>New construction flat mounting plate 18" with asymmetric round holes 3-4-6"</b> ASD-MPLR18-346-FA-6PACK</p> <p><b>New construction flat mounting plate with symmetric round holes 3-4-6"</b> ASD-MPLR-346-FS-6PACK</p> <p><b>New construction mounting plate with round holes and sliding clips 3-4-6"</b> ASD-MPLR-346-SC-6PACK</p> <p><b>Extension cord 3PIN</b> ASD-EC-10A-6PACK ASD-EC-20A-6PACK</p>
ASD-JFR-4D12AC-WH	•
ASD-JFR-6D15AC-WH	•

For most up-to-date spec sheets please refer to [asd-lighting.com](http://asd-lighting.com)





# FIRE RATED LED ROUND RECESSED MINI PANEL

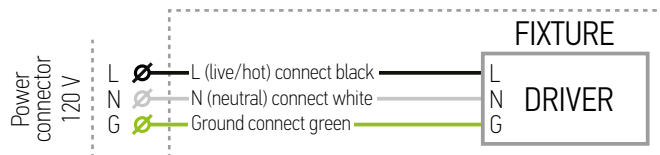
## INSTALLATION GUIDE

### IMPORTANT SAFETY INFORMATION:

Please read all the instructions below before installation.

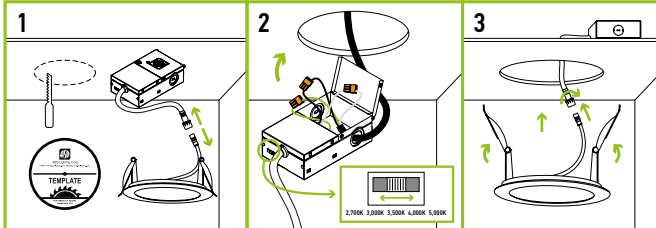
- ▶ Make sure that the supply voltage corresponds to the rated product voltage.
- ▶ The product must be installed by a qualified electrician in accordance with the National Electrical Code and corresponding local codes.
- ▶ If the product is damaged, do not use it.

### ELECTRICAL SCHEMATIC DIAGRAM:



### INSTALLATION STEPS:

1. Use template to cut an appropriate sized hole. Disconnect the fixture from the junction box.
2. Open junction box. Connect the wires: Black to Black, White to White, Green to Green. Secure the connection with quick connector. Choose needed color temperature by adjusting the switch. Close the junction box.
3. Insert the junction box into the cut hole, leaving the connection cable outside. Connect the fixture to the Junction box inserting the cable and securing it with a cap. Push the spring loaded clips upwards and insert the fixture base into the mounting hole. Release the clips, so the fixture fits securely.



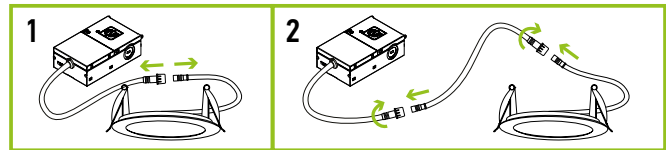
\* The fixture is suitable for ceilings up to 1-3/4" thick.

### ⚠ WARNING

**RISK OF PERSONAL INJURY – READ and follow all WARNINGS and installation instructions.** Keep or give to the owner for future reference.  
**Risk of cuts:** Wear gloves to prevent cuts or abrasions when removing from carton, handling, installing, and maintaining this product.  
**Risk of electric shock:** This product must be installed in accordance with the applicable installation code by a person familiar with the construction and operation of the product and the hazards involved.  
**Risk of Fire:** Minimum 194°F supply conductors. Consult a qualified electrician to ensure correct branch circuit conductor.  
 ASD® assumes no responsibility for claims arising out of improper or careless Installation or handling of this product.

### EXTENSION CORD INSTALLATION:

1. Disconnect the LED Mini Panel cable from the Junction box cable.
2. Connect one end of the Extension Cord to the LED Mini Panel cable, and the other end of the Extension Cord to the Junction box cable.



### MOUNTING PLATE INSTALLATION

ASD-MPLR-346-FA

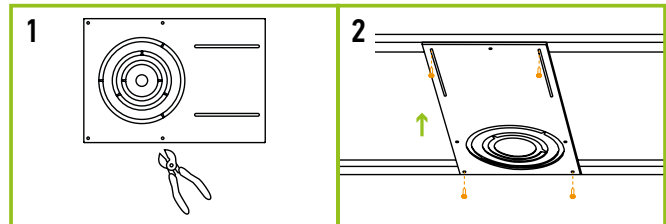
ASD-MPLR18-346-FA

ASD-MPLR-346-FS

ASD-MPLR-346-SC

**sold separately:**

1. Remove the metal ring from the mounting plate according to the size of fixture.
2. Place the mounting plate and secure its position with screws on the beams.



For most up-to-date spec sheets please refer to [asd-lighting.com](http://asd-lighting.com)