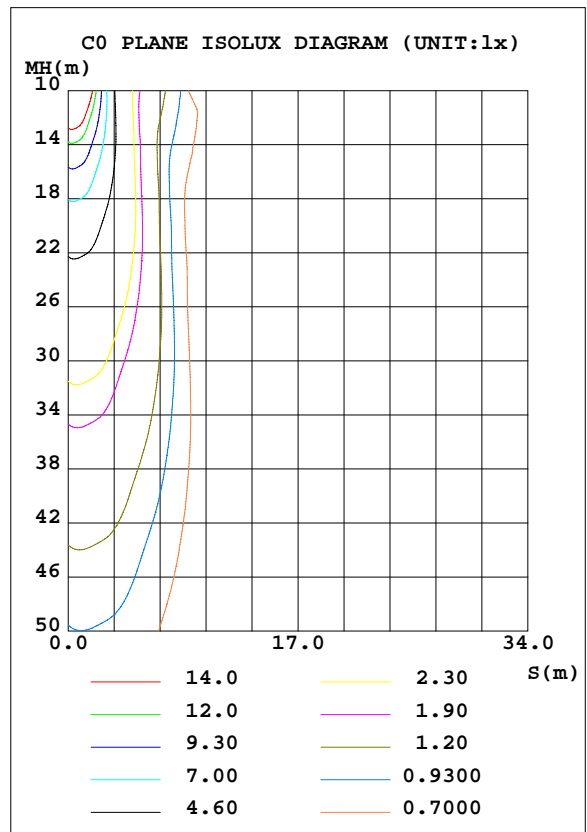
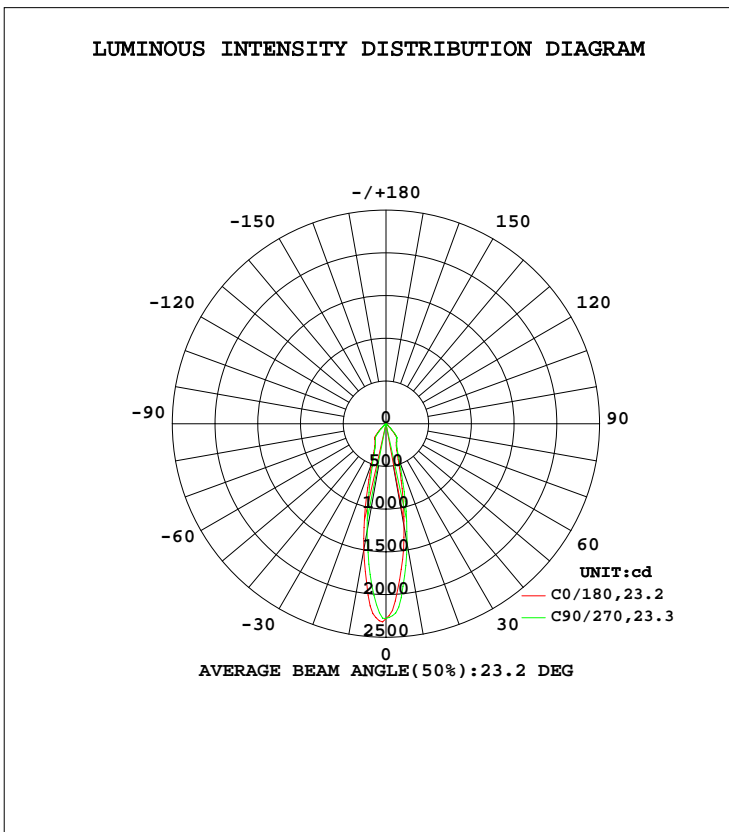


LUMINAIRE PHOTOMETRIC TEST REPORT

Test:U:120.0V I:0.0770A P:8.370W PF:0.9056 Lamp Flux:752.409x1 lm		
NAME: ASD-OLCLR-1N930-XX	TYPE:N/A	WEIGHT:N/A
SPEC.:	DIM.: N/A	SERIAL No.:N/A
MFR.: ASD Lighting Corp	SUR.:N/A	Shielding Angle:N/A

DATA OF LAMP		PHOTOMETRIC DATA Eff: 89.89 lm/W			
MODEL	ASD-OLCLR-1N930-XX	I _{max} (cd)	2320	S/MH(C0/180)	0.36
NOMINAL POWER(W)	9	LOR(%)	100.0	S/MH(C90/270)	0.41
RATED VOLTAGE(V)	120	TOTAL FLUX(lm)	752.41	η UP, DN(C0-180)	0.1,49.6
NOMINAL FLUX(lm)	752.409	CIE CLASS	DIRECT	η UP, DN(C180-360)	0.0,50.2
LAMPS INSIDE	1	η up(%)	0.2	CIBSE SHR NOM	0.00
TEST VOLTAGE(V)	120	η down(%)	99.8	CIBSE SHR MAX	1.00



C Range: 0 - 360DEG
 C Interval: 22.5DEG
 Test Speed: 10.0deg/s
 Temperature:24.8DEG
 Operators:East
 Test Date:2020-08-31

γ Range: 0 - 180DEG
 γ Interval: 1.0DEG
 Test System:EVERFINE GO-R5000_V2 SYSTEM V2.0.351
 Humidity:35%
 Test Distance:2.490m [K=1.0000]
 Remarks:

ZONAL FLUX DIAGRAM

ZONAL FLUX DIAGRAM:

γ	C0	C45	C90	C135	C180	C225	C270	C315	γ	Φ zone	Φ total	%lum,lamp
10	1499	1383	1278	1214	1217	1293	1427	1475	0- 10	168.0	168.0	22.3,22.3
20	493.6	466.9	441.8	414.7	404.6	421.6	456.7	490.0	10- 20	219.1	387.1	51.5,51.5
30	260.3	255.0	248.7	246.4	243.9	249.0	254.3	256.1	20- 30	145.1	532.2	70.7,70.7
40	199.7	184.5	169.9	161.0	161.3	169.4	188.6	198.1	30- 40	137.7	670.0	89,89
50	16.78	15.55	16.27	15.57	13.18	14.27	14.49	17.17	40- 50	64.92	734.9	97.7,97.7
60	8.365	9.070	9.098	9.754	6.257	4.336	4.526	5.311	50- 60	9.847	744.7	99,99
70	3.851	3.323	3.421	2.637	1.755	1.312	1.279	1.431	60- 70	4.391	749.1	99.6,99.6
80	1.134	0.7427	0.8840	0.5509	0.4384	0.4568	0.4813	0.5059	70- 80	1.552	750.7	99.8,99.8
90	0.0294	0.0008	0.0001	0	0	0	0.0237	0.0421	80- 90	0.3313	751.0	99.8,99.8
100	0	0	0	0	0	0	0	0	90-100	0.0007	751.0	99.8,99.8
110	0.0043	0.0048	0.0065	0.0085	0.0011	0.0010	0.0008	0.0000	100-110	0.0007	751.0	99.8,99.8
120	0.0408	0.0425	0.0456	0.0490	0.0153	0.0143	0.0139	0.0129	110-120	0.0143	751.0	99.8,99.8
130	0.1317	0.1370	0.1443	0.1497	0.0488	0.0477	0.0454	0.0437	120-130	0.0496	751.1	99.8,99.8
140	0.4635	0.4864	0.5161	0.5386	0.1527	0.1468	0.1383	0.1333	130-140	0.1388	751.2	99.8,99.8
150	1.196	1.230	1.273	1.303	0.3750	0.3687	0.3562	0.3509	140-150	0.3532	751.6	99.9,99.9
160	1.729	1.739	1.745	1.758	0.5034	0.5048	0.5063	0.5150	150-160	0.4615	752.0	99.9,99.9
170	1.432	1.401	1.365	1.354	0.4844	0.4799	0.4804	0.4858	160-170	0.3047	752.3	100,100
180	0.7998	0.7712	0.7431	0.7461	0.8117	0.7972	0.7583	0.7480	170-180	0.0804	752.4	100,100
DEG	LUMINOUS INTENSITY:cd Less than 25% Percent = 11.4 %									UNIT:lm		

Conical surface Flux(90deg): 718.24 lm

%lum = 95.5%
 %lamp = 95.5%

Conical surface Flux(120deg): 744.73 lm

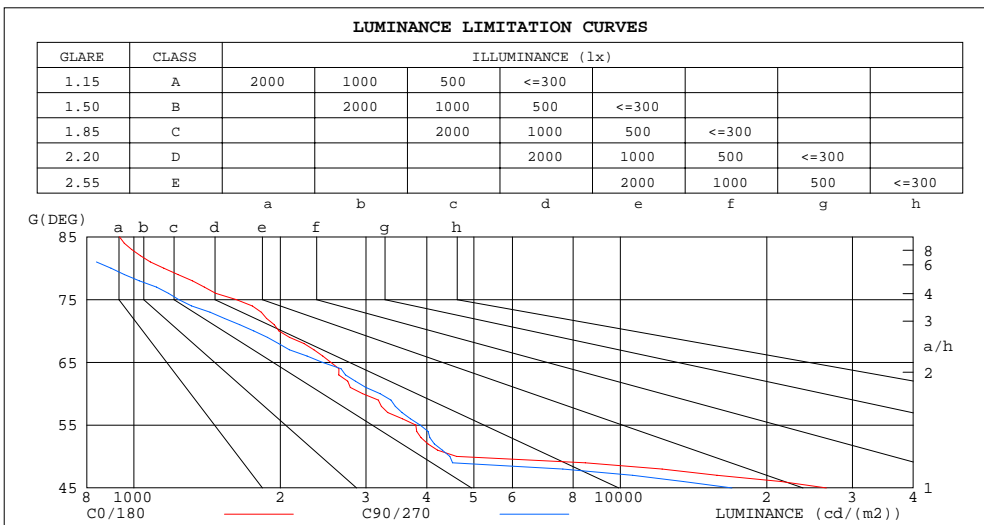
%lum = 99.0%
 %lamp = 99.0%

C Range: 0 - 360DEG
 C Interval: 22.5DEG
 Test Speed: 10.0deg/s
 Temperature:24.8DEG
 Operators:East
 Test Date:2020-08-31

γ Range: 0 - 180DEG
 γ Interval: 1.0DEG
 Test System:EVERFINE GO-R5000_V2 SYSTEM V2.0.351
 Humidity:35%
 Test Distance:2.490m [K=1.0000]
 Remarks:

LUMINANCE LIMITATION CURVES

Test:U:120.0V I:0.0770A P:8.370W PF:0.9056 Lamp Flux:752.409x1 lm		
NAME: ASD-OLCLR-1N930-XX	TYPE:N/A	WEIGHT:N/A
SPEC.:	DIM.: N/A	SERIAL No.:N/A
MFR.: ASD Lighting Corp	SUR.:N/A	Shielding Angle:N/A



LUMINANCE cd/(m2)		
G(DEG)	C0/180	C90/270
85	934	630
80	1153	897
75	1623	1236
70	1987	1763
65	2539	2440
60	2953	3208
55	3797	3876
50	4606	4464
45	26522	16964

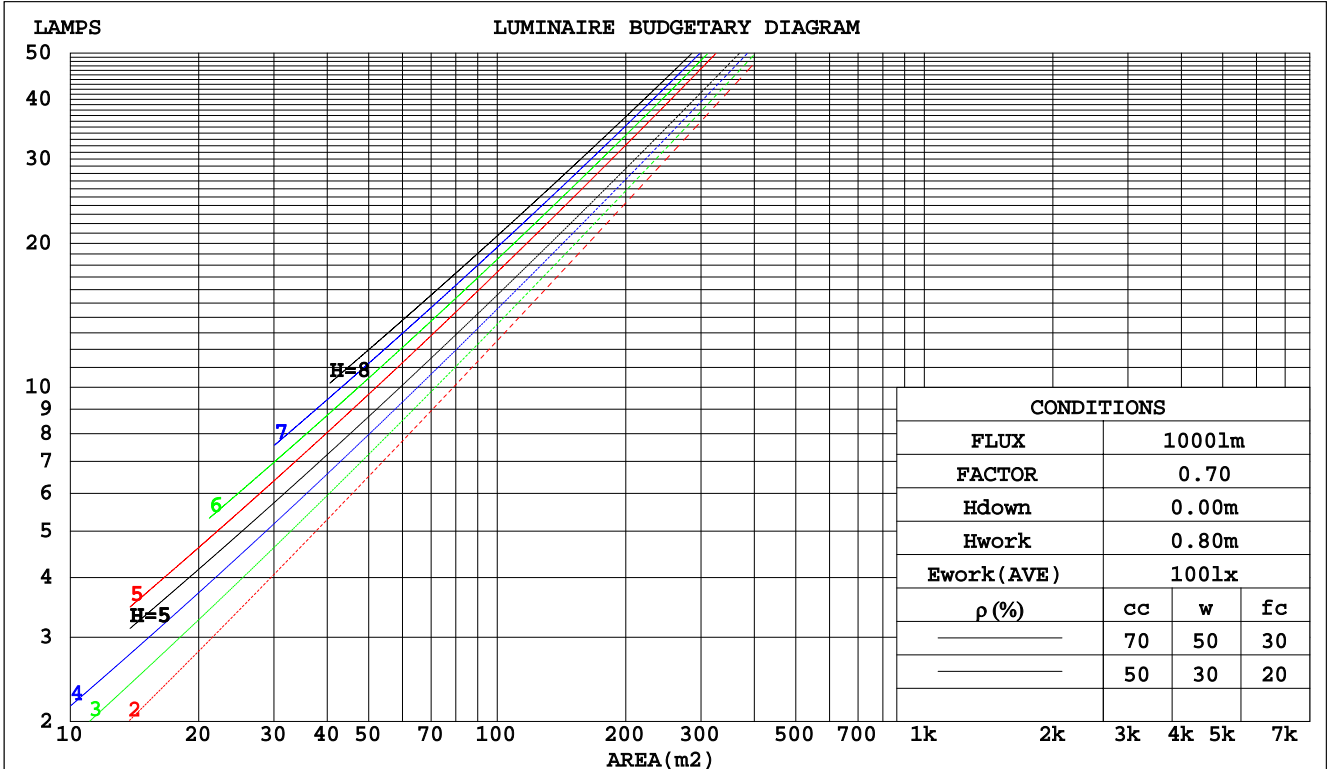
C Range: 0 - 360DEG
 C Interval: 22.5DEG
 Test Speed: 10.0deg/s
 Temperature:24.8DEG
 Operators:East
 Test Date:2020-08-31

γ Range: 0 - 180DEG
 γ Interval: 1.0DEG
 Test System:EVERFINE GO-R5000_V2 SYSTEM V2.0.351
 Humidity:35%
 Test Distance:2.490m [K=1.0000]
 Remarks:

CU AND LUMINAIRE BUDGETARY ESTIMATE DIAGRAM

Test:U:120.0V I:0.0770A P:8.370W PF:0.9056 Lamp Flux:752.409x1 lm		
NAME: ASD-OLCLR-1N930-XX	TYPE:N/A	WEIGHT:N/A
SPEC.:	DIM.: N/A	SERIAL No.:N/A
MFR.: ASD Lighting Corp	SUR.:N/A	Shielding Angle:N/A

pcc	80%			70%			50%			30%			10%			0
	50%	30%	10%	50%	30%	10%	50%	30%	10%	50%	30%	10%	50%	30%	10%	0
pw																0
pfc	20%			20%			20%			20%			20%			0
RCR	RCR:Room Cavity Ratio Coefficients of Utilization(CU)															
0.0	1.19	1.19	1.19	1.16	1.16	1.16	1.11	1.11	1.11	1.06	1.06	1.06	1.02	1.02	1.02	.00
1.0	1.11	1.09	1.07	1.09	1.07	1.05	1.05	1.03	1.02	1.01	.00	.99	.98	.97	.96	.94
2.0	1.04	1.00	.97	1.02	.99	.96	.99	.96	.94	.96	.94	.92	.93	.91	.90	.88
3.0	.97	.93	.89	.96	.92	.88	.93	.90	.87	.91	.88	.86	.89	.86	.84	.83
4.0	.92	.87	.83	.91	.86	.82	.88	.84	.81	.86	.83	.80	.85	.82	.79	.78
5.0	.87	.81	.77	.86	.81	.77	.84	.79	.76	.82	.78	.75	.81	.77	.75	.73
6.0	.82	.76	.72	.81	.76	.72	.80	.75	.72	.78	.74	.71	.77	.73	.71	.69
7.0	.78	.72	.68	.77	.72	.68	.76	.71	.68	.75	.71	.67	.74	.70	.67	.66
8.0	.74	.69	.65	.73	.68	.65	.72	.68	.64	.71	.67	.64	.70	.67	.64	.63
9.0	.71	.65	.62	.70	.65	.61	.69	.65	.61	.68	.64	.61	.68	.64	.61	.60
10.0	.68	.62	.59	.67	.62	.59	.66	.62	.58	.66	.61	.58	.65	.61	.58	.57



C Range: 0 - 360DEG
 C Interval: 22.5DEG
 Test Speed: 10.0deg/s
 Temperature:24.8DEG
 Operators:East
 Test Date:2020-08-31

γ Range: 0 - 180DEG
 γ Interval: 1.0DEG
 Test System:EVERFINE GO-R5000_V2 SYSTEM V2.0.351
 Humidity:35%
 Test Distance:2.490m [K=1.0000]
 Remarks:

WEC AND CCEC

Test:U:120.0V I:0.0770A P:8.370W PF:0.9056 Lamp Flux:752.409x1 lm		
NAME: ASD-OLCLR-1N930-XX	TYPE:N/A	WEIGHT:N/A
SPEC.:	DIM.: N/A	SERIAL No.:N/A
MFR.: ASD Lighting Corp	SUR.:N/A	Shielding Angle:N/A

ρcc	80%			70%			50%			30%			10%			0
ρw	50%	30%	10%	50%	30%	10%	50%	30%	10%	50%	30%	10%	50%	30%	10%	0
ρfc	20%			20%			20%			20%			20%			0
RCR	RCR:Room Cavity Ratio						Wall Exitance Coefficients(WEC)									
0.0																
1.0	.170	.096	.031	.163	.093	.030	.150	.086	.028	.139	.080	.026	.128	.074	.024	
2.0	.162	.089	.027	.156	.086	.027	.146	.081	.025	.136	.076	.024	.127	.072	.023	
3.0	.154	.082	.024	.149	.080	.024	.140	.076	.023	.131	.072	.022	.124	.068	.021	
4.0	.146	.076	.022	.142	.074	.022	.134	.071	.021	.127	.068	.021	.120	.065	.020	
5.0	.138	.070	.020	.135	.069	.020	.128	.067	.020	.122	.064	.019	.116	.062	.019	
6.0	.131	.066	.019	.128	.065	.019	.122	.063	.018	.117	.061	.018	.112	.059	.017	
7.0	.125	.062	.018	.122	.061	.017	.117	.059	.017	.112	.058	.017	.108	.056	.016	
8.0	.119	.058	.016	.117	.058	.016	.112	.056	.016	.108	.055	.016	.104	.053	.016	
9.0	.114	.055	.015	.112	.055	.015	.108	.053	.015	.104	.052	.015	.100	.051	.015	
10.0	.109	.052	.015	.107	.052	.014	.103	.051	.014	.100	.050	.014	.097	.049	.014	

ρcc	80%			70%			50%			30%			10%			0
ρw	50%	30%	10%	50%	30%	10%	50%	30%	10%	50%	30%	10%	50%	30%	10%	0
ρfc	20%			20%			20%			20%			20%			0
RCR	RCR:Room Cavity Ratio						Ceiling Cavity Exitance Coefficients(CCEC)									
0.0	.192	.192	.192	.164	.164	.164	.112	.112	.112	.064	.064	.064	.021	.021	.021	
1.0	.172	.159	.147	.147	.136	.126	.101	.094	.087	.058	.054	.051	.019	.017	.016	
2.0	.156	.134	.115	.134	.115	.100	.092	.080	.069	.053	.046	.041	.017	.015	.013	
3.0	.144	.115	.092	.123	.099	.080	.084	.069	.056	.049	.040	.033	.016	.013	.011	
4.0	.133	.100	.075	.114	.087	.065	.078	.060	.046	.045	.035	.027	.015	.011	.009	
5.0	.124	.088	.062	.106	.076	.054	.073	.053	.038	.042	.031	.023	.014	.010	.007	
6.0	.116	.079	.052	.100	.068	.046	.069	.048	.032	.040	.028	.019	.013	.009	.006	
7.0	.109	.071	.045	.094	.062	.039	.065	.043	.028	.038	.026	.016	.012	.008	.005	
8.0	.103	.065	.039	.089	.056	.034	.061	.040	.024	.036	.023	.014	.012	.008	.005	
9.0	.098	.060	.034	.084	.052	.029	.058	.036	.021	.034	.021	.012	.011	.007	.004	
10.0	.093	.055	.030	.080	.048	.026	.056	.034	.018	.032	.020	.011	.011	.007	.004	

C Range: 0 - 360DEG
 C Interval: 22.5DEG
 Test Speed: 10.0deg/s
 Temperature:24.8DEG
 Operators:East
 Test Date:2020-08-31

γ Range: 0 - 180DEG
 γ Interval: 1.0DEG
 Test System:EVERFINE GO-R5000_V2 SYSTEM V2.0.351
 Humidity:35%
 Test Distance:2.490m [K=1.0000]
 Remarks:

UGR(Unified Glare Rating) Table

Test:U:120.0V I:0.0770A P:8.370W PF:0.9056 Lamp Flux:752.409x1 lm										
NAME: ASD-OLCLR-1N930-XX					TYPE:N/A			WEIGHT:N/A		
SPEC.:					DIM.: N/A			SERIAL No.:N/A		
MFR.: ASD Lighting Corp					SUR.:N/A			Shielding Angle:N/A		
ceiling/cavity	0.7	0.7	0.5	0.5	0.3	0.7	0.7	0.5	0.5	0.3
walls	0.5	0.3	0.5	0.3	0.3	0.5	0.3	0.5	0.3	0.3
working plane	0.2	0.2	0.2	0.2	0.2	0.2	0.2	0.2	0.2	0.2
Room dimensions	Viewed crosswise					Viewed endwise				
x = 2H y = 2H	18.4	19.3	18.7	19.5	19.6	17.9	18.7	18.1	18.9	19.1
3H	18.3	19.1	18.6	19.3	19.5	17.8	18.6	18.0	18.8	19.0
4H	18.3	19.0	18.5	19.3	19.5	17.7	18.5	18.0	18.7	18.9
6H	18.2	18.9	18.5	19.2	19.4	17.6	18.3	17.9	18.6	18.8
8H	18.1	18.8	18.5	19.1	19.4	17.6	18.3	17.9	18.5	18.8
12H	18.1	18.8	18.4	19.0	19.3	17.5	18.2	17.9	18.5	18.8
4H 2H	18.2	19.0	18.5	19.2	19.4	17.7	18.4	17.9	18.6	18.9
3H	18.1	18.8	18.4	19.1	19.3	17.6	18.2	17.9	18.5	18.8
4H	18.1	18.7	18.4	19.0	19.3	17.5	18.1	17.9	18.4	18.7
6H	18.0	18.5	18.4	18.9	19.2	17.4	18.0	17.8	18.3	18.7
8H	17.9	18.4	18.3	18.8	19.2	17.4	17.9	17.8	18.2	18.6
12H	17.9	18.4	18.3	18.7	19.1	17.3	17.8	17.8	18.2	18.6
8H 4H	17.9	18.4	18.3	18.8	19.1	17.4	17.9	17.8	18.2	18.6
6H	17.9	18.3	18.3	18.7	19.1	17.3	17.7	17.7	18.1	18.5
8H	17.8	18.2	18.3	18.6	19.0	17.3	17.6	17.7	18.0	18.5
12H	17.8	18.1	18.2	18.5	19.0	17.2	17.5	17.7	18.0	18.4
12H 4H	17.9	18.3	18.3	18.7	19.1	17.3	17.8	17.7	18.2	18.5
6H	17.8	18.2	18.3	18.6	19.0	17.3	17.6	17.7	18.0	18.5
8H	17.8	18.1	18.2	18.5	19.0	17.2	17.5	17.7	18.0	18.4
Variations with the observer position at spacings:										
S = 1.0H	+ 2.4 / - 8.8					+ 2.5 / - 8.5				
1.5H	+ 4.1 / - 8.5					+ 4.6 / - 7.9				
2.0H	+ 7.4 / - 5.5					+ 6.3 / - 3.1				

CIE Pub.117 Corrected 752.4 lm Total Lamp Luminous Flux.(8log(F/F0) = -1.0)

C Range: 0 - 360DEG
 C Interval: 22.5DEG
 Test Speed: 10.0deg/s
 Temperature:24.8DEG
 Operators:East
 Test Date:2020-08-31

γ Range: 0 - 180DEG
 γ Interval: 1.0DEG
 Test System:EVERFINE GO-R5000_V2 SYSTEM V2.0.351
 Humidity:35%
 Test Distance:2.490m [K=1.0000]
 Remarks:

UTILIZATION FACTORS TABLE

Test:U:120.0V I:0.0770A P:8.370W PF:0.9056 Lamp Flux:752.409x1 lm		
NAME: ASD-OLCLR-1N930-XX	TYPE:N/A	WEIGHT:N/A
SPEC.:	DIM.: N/A	SERIAL No.:N/A
MFR.: ASD Lighting Corp	SUR.:N/A	Shielding Angle:N/A

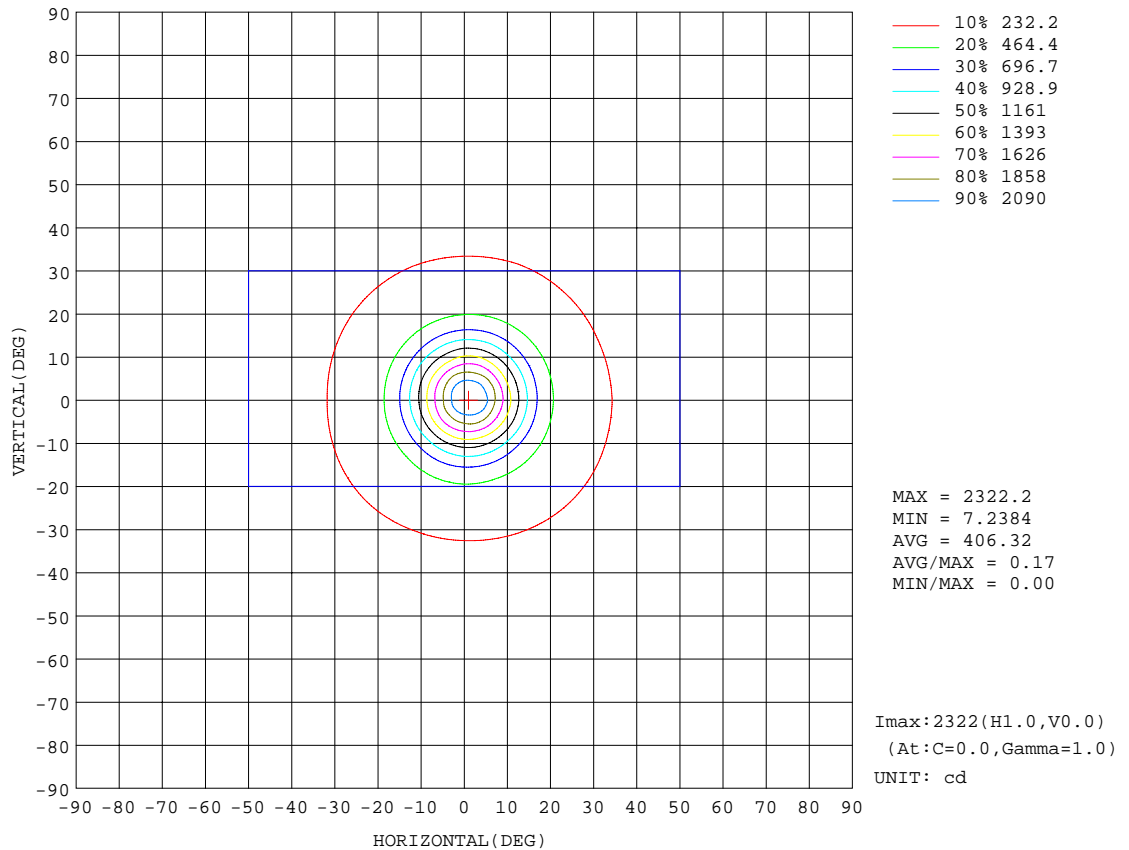
REFLECTANCE										
Ceiling	0.8	0.8	0.8	0.7	0.7	0.7	0.5	0.5	0.5	0
Walls	0.7	0.5	0.3	0.7	0.5	0.3	0.7	0.5	0.3	0
Working plane	0.2	0.2	0.2	0.2	0.2	0.2	0.2	0.2	0.2	0
ROOM INDEX	UTILIZATION FACTORS(PERCENT) $k(RI) \times RCR = 5$									
k = 0.60	85	78	74	84	78	74	83	77	74	70
0.80	93	86	82	92	86	82	91	85	82	78
1.00	98	92	88	97	91	87	95	91	87	83
1.25	102	96	93	101	96	92	99	95	92	87
1.50	105	100	96	104	99	96	101	98	95	90
2.00	108	103	100	106	102	99	104	100	98	92
2.50	110	106	102	108	104	102	105	102	100	94
3.00	111	108	105	109	106	104	106	104	101	95
4.00	113	110	108	111	109	107	108	106	104	97
5.00	115	112	110	112	110	109	108	107	105	98
ROOM INDEX	UF(total)									Direct
According to DIN EN 13032-2 2004			Suspended				SHRNOM = 1.25			

C Range: 0 - 360DEG
 C Interval: 22.5DEG
 Test Speed: 10.0deg/s
 Temperature:24.8DEG
 Operators:East
 Test Date:2020-08-31

γ Range: 0 - 180DEG
 γ Interval: 1.0DEG
 Test System:EVERFINE GO-R5000_V2 SYSTEM V2.0.351
 Humidity:35%
 Test Distance:2.490m [K=1.0000]
 Remarks:

ISOCANDELA DIAGRAM

Test:U:120.0V I:0.0770A P:8.370W PF:0.9056 Lamp Flux:752.409x1 lm		
NAME: ASD-OLCLR-1N930-XX	TYPE:N/A	WEIGHT:N/A
SPEC.:	DIM.: N/A	SERIAL No.:N/A
MFR.: ASD Lighting Corp	SUR.:N/A	Shielding Angle:N/A

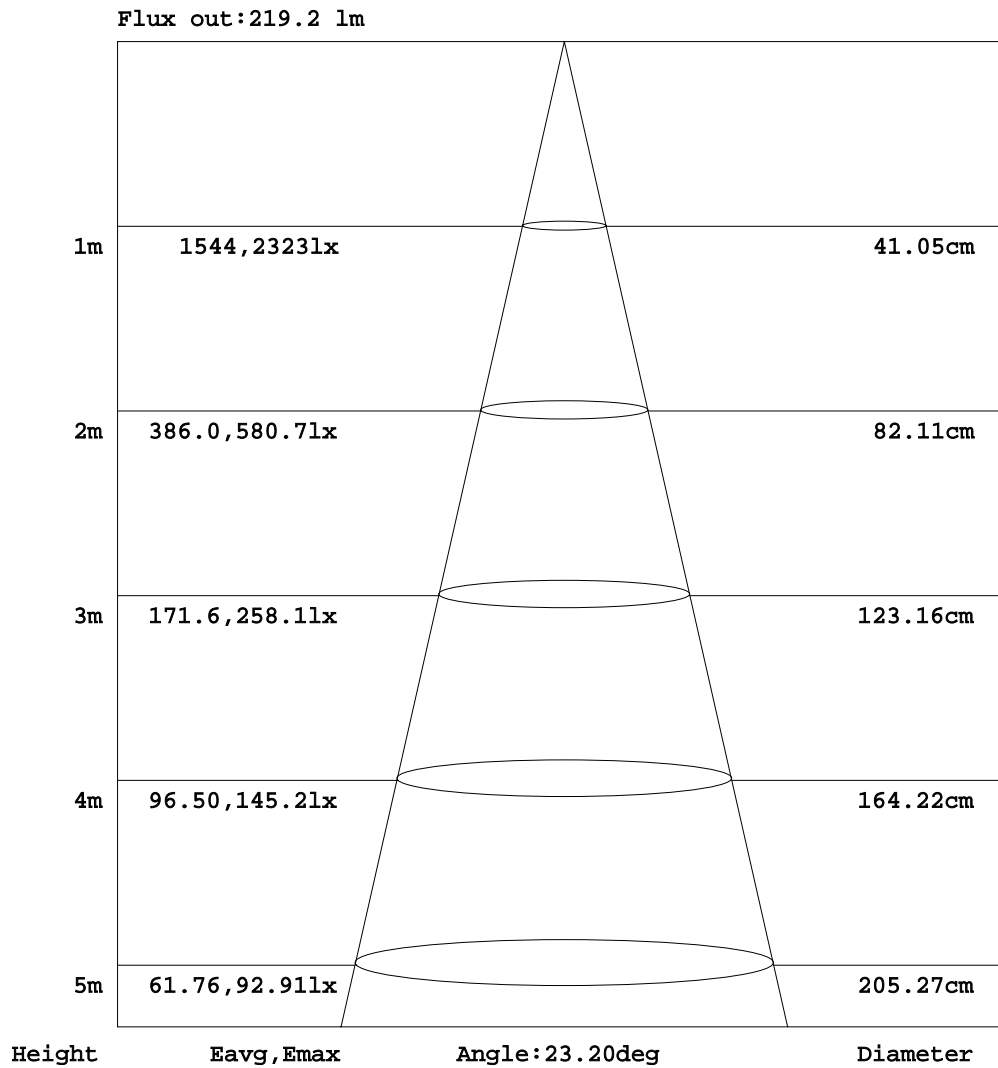


C Range: 0 - 360DEG
 C Interval: 22.5DEG
 Test Speed: 10.0deg/s
 Temperature: 24.8DEG
 Operators: East
 Test Date: 2020-08-31

γ Range: 0 - 180DEG
 γ Interval: 1.0DEG
 Test System: EVERFINE GO-R5000_V2 SYSTEM V2.0.351
 Humidity: 35%
 Test Distance: 2.490m [K=1.0000]
 Remarks:

AAI Figure

Test:U:120.0V I:0.0770A P:8.370W PF:0.9056 Lamp Flux:752.409x1 lm		
NAME: ASD-OLCLR-1N930-XX	TYPE:N/A	WEIGHT:N/A
SPEC.:	DIM.: N/A	SERIAL No.:N/A
MFR.: ASD Lighting Corp	SUR.:N/A	Shielding Angle:N/A



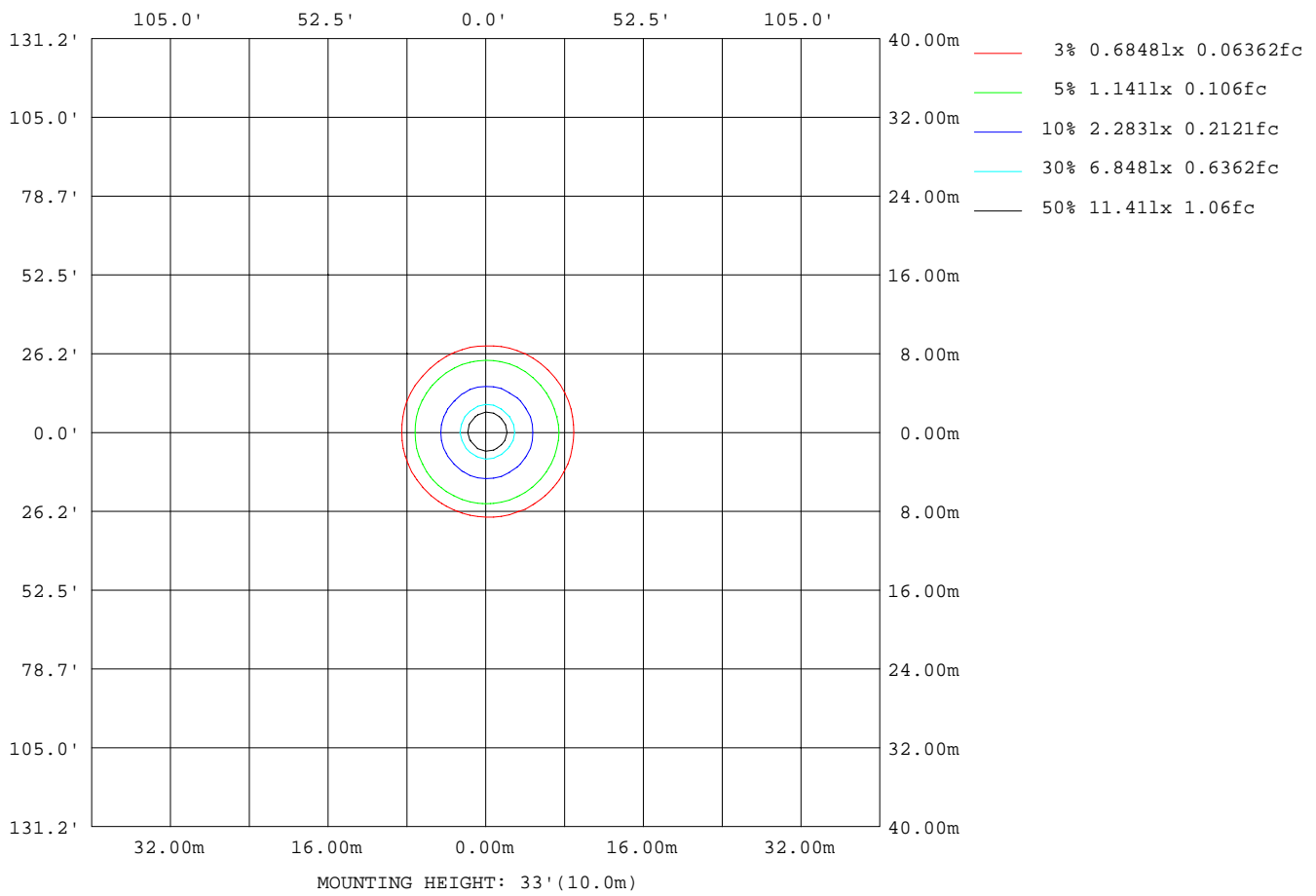
Note:The Curves indicate the illuminated area and the average illumination when the luminaire is at different distance.

C Range: 0 - 360DEG
 C Interval: 22.5DEG
 Test Speed: 10.0deg/s
 Temperature:24.8DEG
 Operators:East
 Test Date:2020-08-31

γ Range: 0 - 180DEG
 γ Interval: 1.0DEG
 Test System:EVERFINE GO-R5000_V2 SYSTEM V2.0.351
 Humidity:35%
 Test Distance:2.490m [K=1.0000]
 Remarks:

ISOLUX DIAGRAM

Test:U:120.0V I:0.0770A P:8.370W PF:0.9056 Lamp Flux:752.409x1 lm		
NAME: ASD-OLCLR-1N930-XX	TYPE:N/A	WEIGHT:N/A
SPEC.:	DIM.: N/A	SERIAL No.:N/A
MFR.: ASD Lighting Corp	SUR.:N/A	Shielding Angle:N/A



C Range: 0 - 360DEG
 C Interval: 22.5DEG
 Test Speed: 10.0deg/s
 Temperature:24.8DEG
 Operators:East
 Test Date:2020-08-31

γ Range: 0 - 180DEG
 γ Interval: 1.0DEG
 Test System:EVERFINE GO-R5000_V2 SYSTEM V2.0.351
 Humidity:35%
 Test Distance:2.490m [K=1.0000]
 Remarks:

LED Avg.L Report

Test:U:120.0V I:0.0770A P:8.370W PF:0.9056 Lamp Flux:752.409x1 lm		
NAME: ASD-OLCLR-1N930-XX	TYPE:N/A	WEIGHT:N/A
SPEC.:	DIM.: N/A	SERIAL No.:N/A
MFR.: ASD Lighting Corp	SUR.:N/A	Shielding Angle:N/A

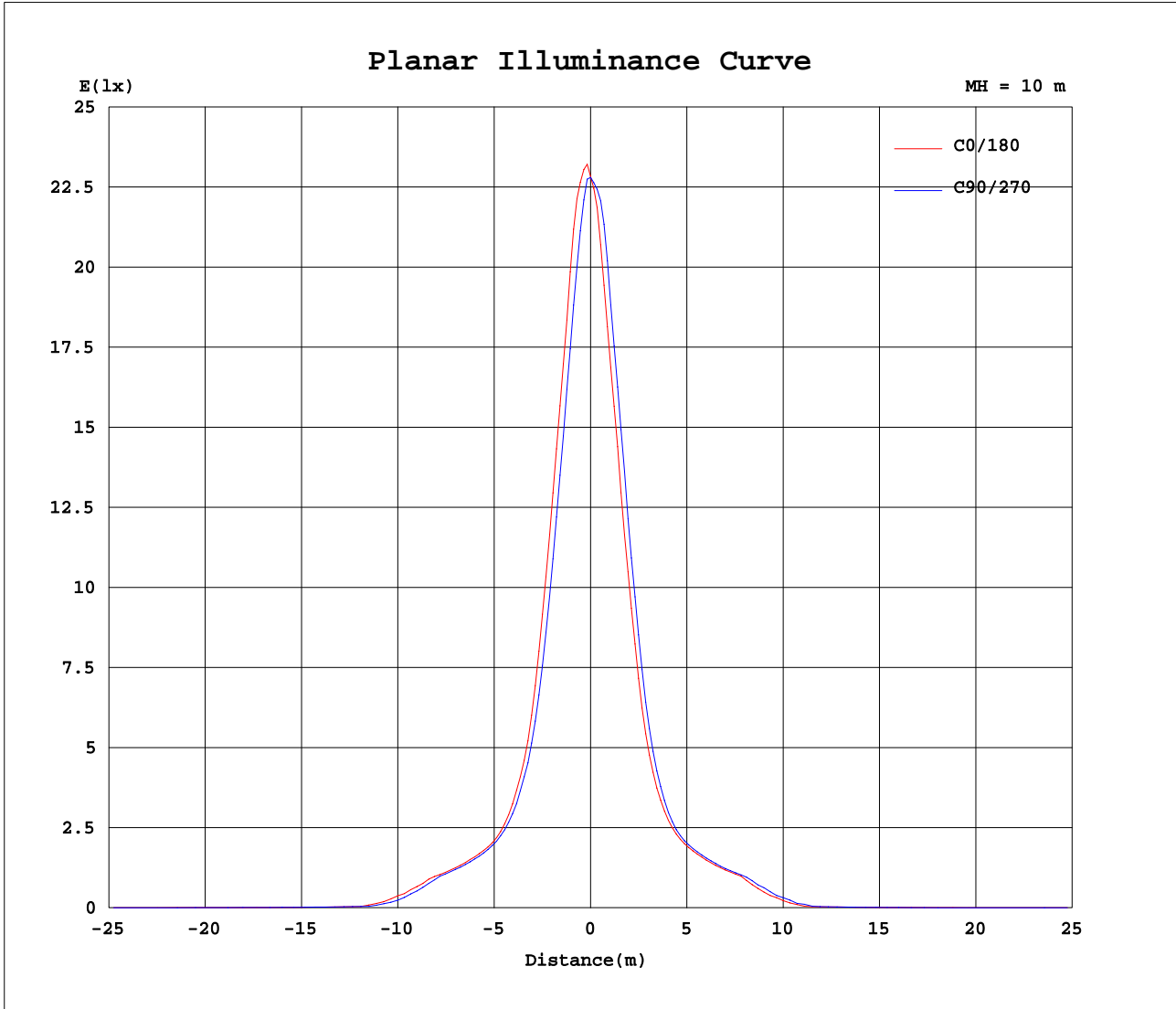
AvgL	cd/m2
L_0~180(65)av	2008
L_0~180(75)av	1094
L_0~180(85)av	663
L_90~270(65)av	1670
L_90~270(75)av	896
L_90~270(85)av	563
L_45(65)av	1688
L_45(75)av	770
L_45(85)av	487

Standard: GB/T 29293-2012

C Range: 0 - 360DEG
 C Interval: 22.5DEG
 Test Speed: 10.0deg/s
 Temperature:24.8DEG
 Operators:East
 Test Date:2020-08-31

γ Range: 0 - 180DEG
 γ Interval: 1.0DEG
 Test System:EVERFINE GO-R5000_V2 SYSTEM V2.0.351
 Humidity:35%
 Test Distance:2.490m [K=1.0000]
 Remarks:

Planar Illuminance Curve



C Range: 0 - 360DEG
 C Interval: 22.5DEG
 Test Speed: 10.0deg/s
 Temperature: 24.8DEG
 Operators: East
 Test Date: 2020-08-31

γ Range: 0 - 180DEG
 γ Interval: 1.0DEG
 Test System: EVERFINE GO-R5000_V2 SYSTEM V2.0.351
 Humidity: 35%
 Test Distance: 2.490m [K=1.0000]
 Remarks:

LUMINOUS DISTRIBUTION INTENSITY DATA

Test:U:120.0V I:0.0770A P:8.370W PF:0.9056 Lamp Flux:752.409x1 lm		
NAME: ASD-OLCLR-1N930-XX	TYPE:N/A	WEIGHT:N/A
SPEC.:	DIM.: N/A	SERIAL No.:N/A
MFR.: ASD Lighting Corp	SUR.:N/A	Shielding Angle:N/A

Table--1

UNIT: cd

C(DEG)\ γ (DEG)	0	22.5	45	67.5	90	112.5	135	157.5	180	202.5	225	247.5	270	292.5	315	337.5			
0	2281	2281	2281	2281	2281	2281	2281	2281	2281	2281	2281	2281	2281	2281	2281	2281			
5	2141	2093	2036	1971	1903	1867	1841	1841	1833	1875	1935	2011	2044	2077	2118	2115			
10	1499	1447	1383	1320	1278	1239	1214	1209	1217	1258	1293	1348	1427	1473	1475	1481			
15	888	851	798	768	738	718	689	682	691	708	735	783	825	863	874	884			
20	494	483	467	449	442	430	415	407	405	411	422	437	457	477	490	496			
25	320	318	312	309	303	299	292	290	287	291	292	299	302	305	313	315			
30	260	259	255	252	249	246	246	244	244	245	249	252	254	255	256	258			
35	228	226	223	220	219	216	217	215	215	217	218	222	223	225	224	224			
40	200	197	185	177	170	160	161	161	161	170	169	176	189	193	198	199			
45	106	97.5	80.9	79.0	68.0	61.0	60.9	61.7	63.6	68.6	73.4	72.4	90.2	101	105	104			
50	16.8	16.1	15.5	15.1	16.3	16.9	15.6	14.2	13.2	13.5	14.3	14.3	14.5	15.6	17.2	17.3			
55	12.3	11.4	11.4	12.3	12.6	14.3	14.4	11.2	10.3	8.43	8.84	9.28	9.33	9.85	10.4	11.7			
60	8.37	7.95	9.07	8.89	9.10	11.8	9.75	7.51	6.26	4.22	4.34	4.44	4.53	4.89	5.31	7.87			
65	6.08	5.41	6.03	5.81	5.85	7.64	5.48	4.26	3.55	2.11	2.10	2.14	2.16	2.31	2.58	4.70			
70	3.85	3.66	3.32	3.76	3.42	4.90	2.64	2.30	1.76	1.30	1.31	1.31	1.28	1.35	1.43	2.81			
75	2.38	2.18	1.67	2.14	1.81	2.32	1.16	1.11	0.83	0.73	0.76	0.79	0.82	0.87	0.92	1.48			
80	1.13	1.19	0.74	1.12	0.88	1.07	0.55	0.55	0.44	0.43	0.46	0.48	0.48	0.50	0.51	0.69			
85	0.46	0.47	0.27	0.39	0.31	0.33	0.19	0.21	0.19	0.20	0.22	0.24	0.25	0.26	0.27	0.32			
90	0.03	0.01	0.00	0.00	0.00	0.00	0.00	0.00	0.00	0.00	0.00	0.01	0.02	0.04	0.04	0.04			
95	0.00	0.00	0.00	0.00	0.00	0.00	0.00	0.00	0.00	0.00	0.00	0.00	0.00	0.00	0.00	0.00			
100	0.00	0.00	0.00	0.00	0.00	0.00	0.00	0.00	0.00	0.00	0.00	0.00	0.00	0.00	0.00	0.00			
105	0.00	0.00	0.00	0.00	0.00	0.00	0.00	0.00	0.00	0.00	0.00	0.00	0.00	0.00	0.00	0.00			
110	0.00	0.00	0.00	0.01	0.01	0.01	0.01	0.01	0.00	0.00	0.00	0.00	0.00	0.00	0.00	0.00			
115	0.02	0.02	0.02	0.02	0.02	0.02	0.02	0.02	0.01	0.01	0.01	0.01	0.01	0.01	0.01	0.00			
120	0.04	0.04	0.04	0.04	0.05	0.05	0.05	0.05	0.02	0.02	0.01	0.01	0.01	0.01	0.01	0.01			
125	0.07	0.07	0.08	0.08	0.08	0.08	0.09	0.08	0.03	0.03	0.03	0.03	0.03	0.03	0.02	0.02			
130	0.13	0.13	0.14	0.14	0.14	0.15	0.15	0.15	0.05	0.05	0.05	0.05	0.05	0.04	0.04	0.04			
135	0.24	0.24	0.25	0.26	0.26	0.27	0.28	0.28	0.08	0.08	0.08	0.08	0.08	0.08	0.08	0.07			
140	0.46	0.47	0.49	0.50	0.52	0.53	0.54	0.54	0.15	0.15	0.15	0.14	0.14	0.14	0.13	0.13			
145	0.84	0.85	0.87	0.90	0.92	0.94	0.95	0.94	0.27	0.27	0.26	0.26	0.25	0.25	0.24	0.24			
150	1.20	1.21	1.23	1.25	1.27	1.29	1.30	1.30	0.38	0.37	0.37	0.36	0.36	0.35	0.35	0.35			
155	1.53	1.54	1.56	1.58	1.58	1.60	1.60	1.60	0.49	0.49	0.49	0.49	0.48	0.48	0.49	0.49			
160	1.73	1.73	1.74	1.75	1.75	1.75	1.76	1.76	0.50	0.51	0.50	0.51	0.51	0.51	0.51	0.52			
165	1.70	1.69	1.69	1.68	1.67	1.67	1.67	1.67	0.48	0.48	0.48	0.48	0.48	0.49	0.49	0.49			
170	1.43	1.42	1.40	1.39	1.37	1.36	1.35	1.36	0.48	0.49	0.48	0.48	0.48	0.48	0.49	0.49			
175	1.13	1.11	1.09	1.07	1.05	1.04	1.04	1.05	0.53	0.53	0.52	0.52	0.52	0.52	0.52	0.52			
180	0.80	0.79	0.77	0.75	0.74	0.75	0.75	0.75	0.81	0.81	0.80	0.78	0.76	0.75	0.75	0.75			

C Range: 0 - 360DEG
 C Interval: 22.5DEG
 Test Speed: 10.0deg/s
 Temperature:24.8DEG
 Operators:East
 Test Date:2020-08-31

γ Range: 0 - 180DEG
 γ Interval: 1.0DEG
 Test System:EVERFINE GO-R5000_V2 SYSTEM V2.0.351
 Humidity:35%
 Test Distance:2.490m [K=1.0000]
 Remarks: