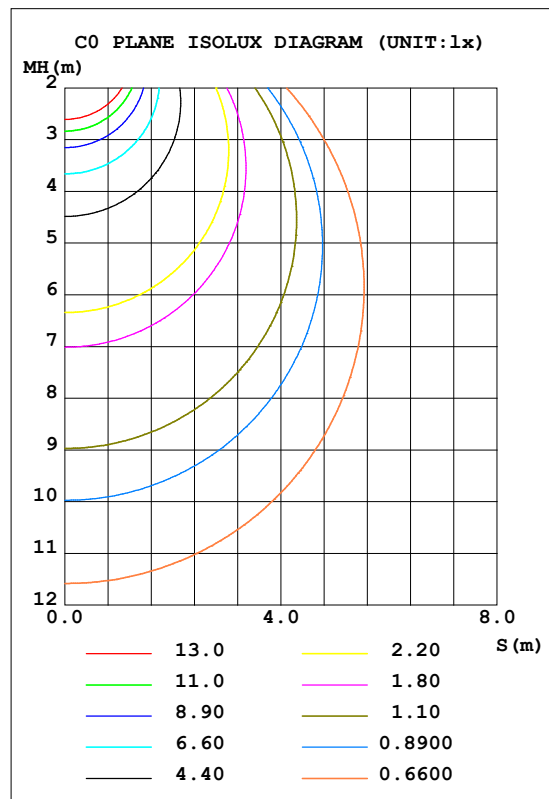
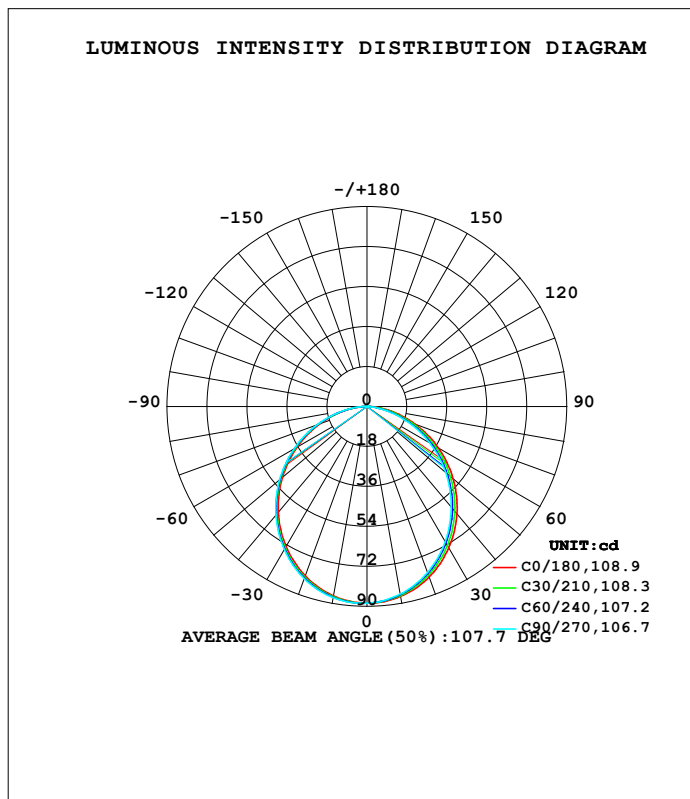


LUMINAIRE PHOTOMETRIC TEST REPORT

Test:U:121.47V I:0.1814A P:20.182W PF:0.5203 Freq:59.98Hz Lamp Flux:240.69x1 lm		
NAME: ASD-UCS-9D3CC-3000K	TYPE:	WEIGHT:
SPEC.:	DIM.:	SERIAL No.:
MFR.: ASD Lighting Corp	SUR.:	Shielding Angle:

DATA OF LAMP		PHOTOMETRIC DATA			
MODEL	ASD-UCS-9D3CC-3000K	I _{max} (cd)	88.65	S/MH (C0/180)	1.35
NOMINAL POWER (W)	3	LOR (%)	100.0	S/MH (C90/270)	1.36
RATED VOLTAGE (V)	120	TOTAL FLUX (lm)	240.69	η UP, DN (C0-180)	0.2, 48.1
NOMINAL FLUX (lm)	240.69	CIE CLASS	DIRECT	η UP, DN (C180-360)	0.2, 51.5
LAMPS INSIDE	1	η up (%)	0.4	CIBSE SHR NOM	1.25
TEST VOLTAGE (V)	120	η down (%)	99.6	CIBSE SHR MAX	1.35



C Range: 0 - 360DEG
 C Interval: 15.0DEG
 Test Speed: HIGH
 Temperature: 25.3DEG
 Operators: LiuLiwen
 Test Date: 2022-09-29

γ Range: 0 - 180DEG
 γ Interval: 1.0DEG
 Test System: EVERFINE GO-SPEX500_V1 SYSTEM V2.0.402
 Humidity: 65.0%
 Test Distance: 3.010m [K=1.0000]
 Remarks:

ZONAL FLUX DIAGRAM

ZONAL FLUX DIAGRAM:

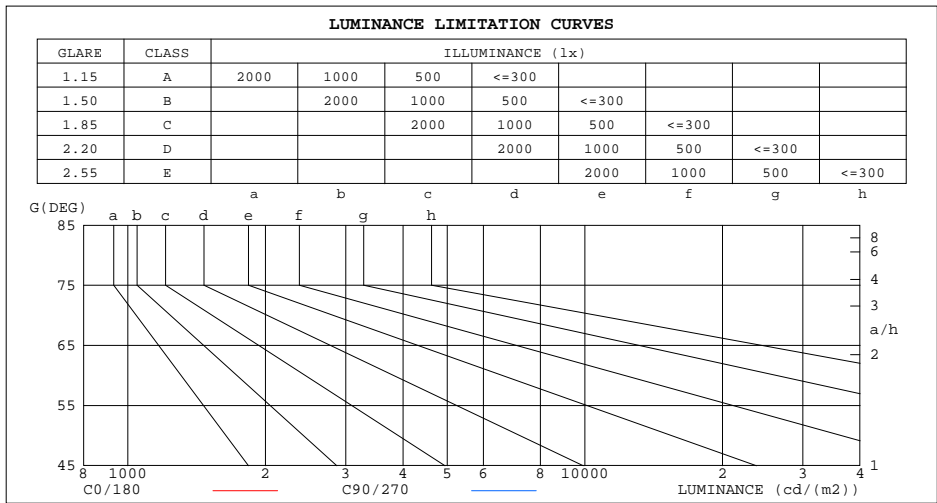
g	C0	C45	C90	C135	C180	C225	C270	C315	g	F zone	F total	%lamp
10	86.83	86.25	85.83	86.00	86.58	87.09	87.43	87.32	0- 10	8.363	8.363	3.47
20	81.78	80.45	79.58	79.99	81.19	82.01	82.53	82.46	10- 20	23.80	32.16	13.4
30	73.60	71.74	70.43	71.10	72.86	73.83	74.40	74.44	20- 30	35.64	67.80	28.2
40	63.08	60.76	59.10	60.00	62.16	63.21	63.78	63.97	30- 40	42.31	110.1	45.7
50	50.73	48.10	46.28	47.35	49.78	50.80	51.37	51.60	40- 50	43.13	153.2	63.7
60	37.07	34.43	32.51	33.64	36.13	37.20	37.72	37.96	50- 60	38.21	191.5	79.5
70	22.97	20.50	18.66	19.74	22.13	23.13	23.62	23.84	60- 70	28.51	220.0	91.4
80	9.872	7.692	6.023	7.010	9.091	9.842	10.27	10.45	70- 80	15.98	235.9	98
90	0.0184	0.0178	0.0162	0.0248	0.0037	0.0295	0.2478	0.1603	80- 90	3.904	239.8	99.6
100	0.0773	0.0771	0.0812	0.0864	0.0593	0.0489	0.0416	0.0421	90-100	0.0414	239.9	99.7
110	0.1357	0.1355	0.1446	0.1386	0.1156	0.0973	0.0978	0.0931	100-110	0.0978	240.0	99.7
120	0.1893	0.1794	0.1930	0.1801	0.1537	0.1400	0.1477	0.1391	110-120	0.1410	240.1	99.8
130	0.2094	0.2122	0.2240	0.2002	0.1571	0.1590	0.1711	0.1680	120-130	0.1571	240.3	99.8
140	0.2052	0.2286	0.2257	0.2125	0.1577	0.1543	0.1825	0.1683	130-140	0.1474	240.4	99.9
150	0.2055	0.2247	0.2334	0.2058	0.1531	0.1537	0.1741	0.1705	140-150	0.1207	240.6	99.9
160	0.1874	0.1921	0.2115	0.1716	0.1289	0.1355	0.1700	0.1501	150-160	0.0831	240.6	100
170	0.1645	0.1682	0.1580	0.1371	0.1268	0.1057	0.1319	0.1367	160-170	0.0432	240.7	100
180	0.1364	0.1568	0.1549	0.1603	0.1388	0.1571	0.1555	0.1596	170-180	0.0136	240.7	100
DEG	LUMINOUS INTENSITY:cd									UNIT:lm		

C Range: 0 - 360DEG
 C Interval: 15.0DEG
 Test Speed: HIGH
 Temperature:25.3DEG
 Operators:LiuLiwen
 Test Date:2022-09-29

g Range: 0 - 180DEG
 g Interval: 1.0DEG
 Test System:EVERFINE GO-SPEX500_V1 SYSTEM V2.0.402
 Humidity:65.0%
 Test Distance:3.010m [K=1.0000]
 Remarks:

LUMINANCE LIMITATION CURVES

Test:U:121.47V I:0.1814A P:20.182W PF:0.5203 Freq:59.98Hz Lamp Flux:240.69x1 lm		
NAME: ASD-UCS-9D3CC-3000K	TYPE:	WEIGHT:
SPEC.:	DIM.:	SERIAL No.:
MFR.: ASDLigtigcorp	SUR.:	Shielding Angle:



LUMINANCE cd/(m2)		
G(DEG)	C0/180	C90/270
85	97	25
80	114	69
75	125	93
70	134	109
65	142	121
60	148	130
55	153	137
50	158	144
45	161	149

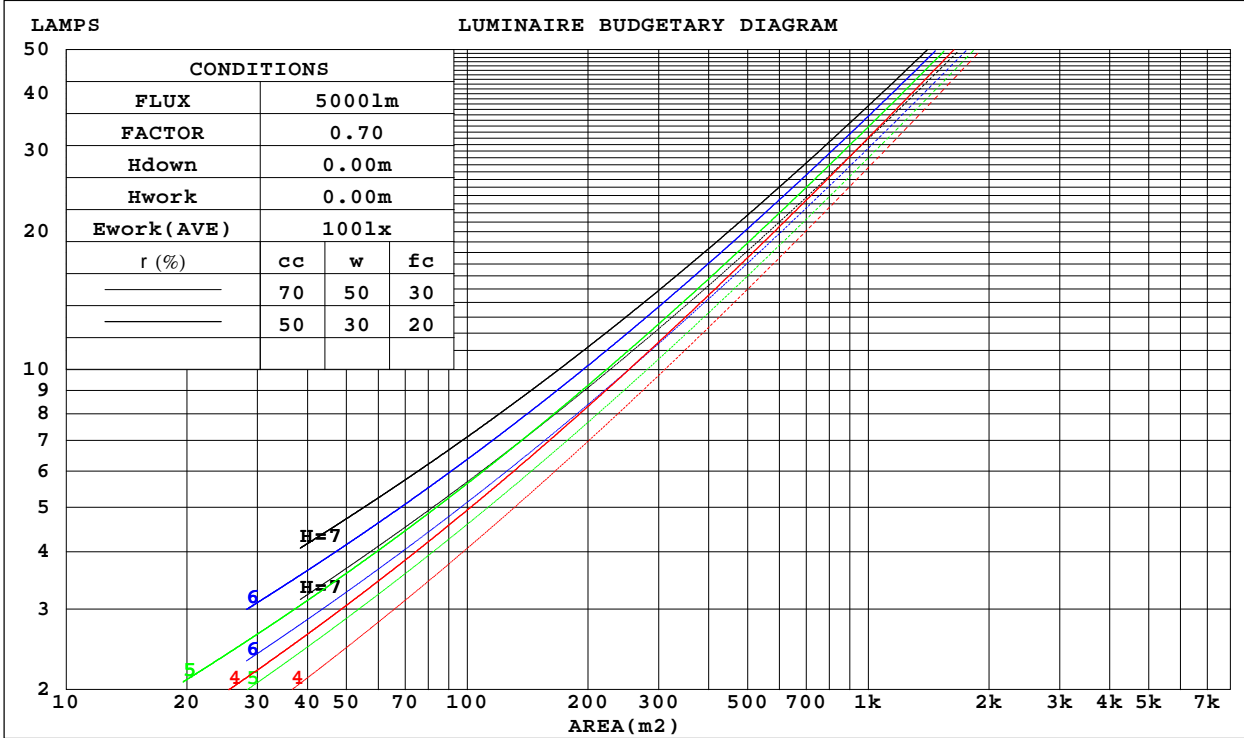
C Range: 0 - 360DEG
 C Interval: 15.0DEG
 Test Speed: HIGH
 Temperature: 25.3DEG
 Operators: LiuLiwen
 Test Date: 2022-09-29

g Range: 0 - 180DEG
 g Interval: 1.0DEG
 Test System: EVERFINE GO-SPEX500_V1 SYSTEM V2.0.402
 Humidity: 65.0%
 Test Distance: 3.010m [K=1.0000]
 Remarks:

CU AND LUMINAIRE BUDGETARY ESTIMATE DIAGRAM

Test:U:121.47V I:0.1814A P:20.182W PF:0.5203 Freq:59.98Hz Lamp Flux:240.69x1 lm		
NAME: ASD-UCS-9D3CC-3000K	TYPE:	WEIGHT:
SPEC.:	DIM.:	SERIAL No.:
MFR.: ASDLigtigcorp	SUR.:	Shielding Angle:

r cc	80%			70%			50%			30%			10%			0
r w	50%	30%	10%	50%	30%	10%	50%	30%	10%	50%	30%	10%	50%	30%	10%	0
r fc	20%			20%			20%			20%			20%			0
RCR	RCR:Room Cavity Ratio						Coefficients of Utilization(CU)									
0.0	1.19	1.19	1.19	1.16	1.16	1.16	1.11	1.11	1.11	1.06	1.06	1.06	1.02	1.02	1.02	.00
1.0	1.04	.00	.96	1.02	.98	.95	.98	.94	.91	.94	.91	.89	.90	.88	.86	.84
2.0	.91	.84	.78	.89	.83	.77	.85	.80	.76	.82	.78	.74	.79	.75	.72	.70
3.0	.80	.72	.65	.78	.71	.65	.75	.69	.64	.72	.67	.62	.70	.65	.61	.59
4.0	.71	.62	.55	.69	.61	.55	.67	.60	.54	.65	.58	.53	.62	.57	.53	.51
5.0	.63	.54	.48	.62	.54	.48	.60	.53	.47	.58	.52	.46	.56	.50	.46	.44
6.0	.57	.48	.42	.56	.48	.42	.54	.47	.41	.53	.46	.41	.51	.45	.40	.38
7.0	.52	.43	.37	.51	.43	.37	.49	.42	.36	.48	.41	.36	.47	.40	.36	.34
8.0	.47	.39	.33	.47	.38	.33	.45	.38	.33	.44	.37	.32	.43	.37	.32	.30
9.0	.43	.35	.30	.43	.35	.30	.42	.34	.29	.41	.34	.29	.39	.33	.29	.27
10.0	.40	.32	.27	.40	.32	.27	.39	.32	.27	.38	.31	.27	.37	.31	.26	.25



C Range: 0 - 360DEG
 C Interval: 15.0DEG
 Test Speed: HIGH
 Temperature:25.3DEG
 Operators:LiuLiwen
 Test Date:2022-09-29

g Range: 0 - 180DEG
 g Interval: 1.0DEG
 Test System:EVERFINE GO-SPEX500_V1 SYSTEM V2.0.402
 Humidity:65.0%
 Test Distance:3.010m [K=1.0000]
 Remarks:

WEC AND CCEC

Test:U:121.47V I:0.1814A P:20.182W PF:0.5203 Freq:59.98Hz Lamp Flux:240.69x1 lm		
NAME: ASD-UCS-9D3CC-3000K	TYPE:	WEIGHT:
SPEC.:	DIM.:	SERIAL No.:
MFR.: ASDLigtigcorp	SUR.:	Shielding Angle:

r cc	80%			70%			50%			30%			10%			0
r w	50%	30%	10%	50%	30%	10%	50%	30%	10%	50%	30%	10%	50%	30%	10%	0
r fc	20%			20%			20%			20%			20%			0
RCR	RCR:Room Cavity Ratio						Wall Exitance Coefficients(WEC)									
0.0																
1.0	.303	.172	.055	.296	.169	.054	.283	.162	.052	.270	.156	.050	.259	.150	.048	
2.0	.287	.157	.048	.280	.154	.048	.269	.149	.046	.258	.145	.045	.248	.140	.044	
3.0	.266	.142	.042	.260	.139	.042	.250	.135	.041	.240	.132	.040	.231	.128	.040	
4.0	.246	.128	.038	.241	.126	.037	.232	.123	.037	.223	.120	.036	.215	.117	.036	
5.0	.228	.116	.034	.223	.115	.033	.215	.112	.033	.207	.109	.033	.200	.107	.032	
6.0	.211	.106	.030	.208	.105	.030	.200	.103	.030	.193	.100	.030	.187	.098	.029	
7.0	.197	.097	.028	.193	.096	.027	.187	.094	.027	.181	.093	.027	.175	.091	.027	
8.0	.184	.090	.025	.181	.089	.025	.175	.087	.025	.170	.086	.025	.164	.084	.025	
9.0	.173	.084	.023	.170	.083	.023	.165	.081	.023	.160	.080	.023	.155	.079	.023	
10.0	.162	.078	.022	.160	.077	.022	.155	.076	.021	.151	.075	.021	.146	.074	.021	

r cc	80%			70%			50%			30%			10%			0
r w	50%	30%	10%	50%	30%	10%	50%	30%	10%	50%	30%	10%	50%	30%	10%	0
r fc	20%			20%			20%			20%			20%			0
RCR	RCR:Room Cavity Ratio						Ceiling Cavity Exitance Coefficients(CCEC)									
0.0	.193	.193	.193	.165	.165	.165	.113	.113	.113	.065	.065	.065	.021	.021	.021	
1.0	.183	.159	.138	.156	.136	.118	.107	.094	.082	.061	.054	.048	.020	.017	.015	
2.0	.174	.135	.101	.149	.116	.088	.102	.080	.061	.059	.047	.036	.019	.015	.012	
3.0	.166	.117	.078	.143	.101	.067	.098	.070	.047	.057	.041	.028	.018	.013	.009	
4.0	.159	.104	.062	.136	.090	.053	.094	.062	.038	.054	.037	.022	.017	.012	.007	
5.0	.151	.093	.050	.130	.081	.044	.090	.056	.031	.052	.033	.018	.017	.011	.006	
6.0	.144	.085	.042	.124	.073	.037	.086	.051	.026	.050	.030	.015	.016	.010	.005	
7.0	.137	.078	.036	.118	.068	.032	.082	.047	.022	.047	.028	.013	.015	.009	.004	
8.0	.131	.072	.032	.113	.063	.028	.078	.044	.020	.045	.026	.012	.015	.008	.004	
9.0	.125	.067	.028	.108	.058	.025	.075	.041	.017	.043	.024	.010	.014	.008	.003	
10.0	.119	.063	.025	.103	.055	.022	.071	.038	.016	.042	.023	.009	.014	.007	.003	

C Range: 0 - 360DEG
 C Interval: 15.0DEG
 Test Speed: HIGH
 Temperature:25.3DEG
 Operators:LiuLiwen
 Test Date:2022-09-29

g Range: 0 - 180DEG
 g Interval: 1.0DEG
 Test System:EVERFINE GO-SPEX500_V1 SYSTEM V2.0.402
 Humidity:65.0%
 Test Distance:3.010m [K=1.0000]
 Remarks:

UGR(Unified Glare Rating) Table

Test:U:121.47V I:0.1814A P:20.182W PF:0.5203 Freq:59.98Hz Lamp Flux:240.69x1 lm										
NAME: ASD-UCS-9D3CC-3000K					TYPE:			WEIGHT:		
SPEC.:					DIM.:			SERIAL No.:		
MFR.: ASDLigtigcorp					SUR.:			Shielding Angle:		
ceiling/cavity	0.7	0.7	0.5	0.5	0.3	0.7	0.7	0.5	0.5	0.3
walls	0.5	0.3	0.5	0.3	0.3	0.5	0.3	0.5	0.3	0.3
working plane	0.2	0.2	0.2	0.2	0.2	0.2	0.2	0.2	0.2	0.2
Room dimensions	Viewed crosswise					Viewed endwise				
x = 2H y = 2H	6.2	7.7	6.5	7.9	8.1	5.7	7.2	6.0	7.4	7.6
3H	7.7	9.1	8.0	9.3	9.6	7.0	8.4	7.3	8.6	8.9
4H	8.3	9.6	8.6	9.9	10.2	7.4	8.8	7.8	9.0	9.3
6H	8.8	10.0	9.1	10.3	10.6	7.7	8.9	8.0	9.2	9.5
8H	8.9	10.1	9.3	10.4	10.7	7.7	8.9	8.1	9.2	9.5
12H	9.0	10.1	9.4	10.4	10.8	7.7	8.8	8.0	9.1	9.4
4H 2H	6.7	8.0	7.0	8.3	8.6	6.3	7.6	6.6	7.9	8.2
3H	8.4	9.6	8.8	9.9	10.2	7.8	8.9	8.1	9.2	9.6
4H	9.1	10.2	9.5	10.5	10.9	8.3	9.4	8.7	9.7	10.1
6H	9.7	10.6	10.1	11.0	11.4	8.7	9.6	9.1	10.0	10.3
8H	9.9	10.8	10.3	11.1	11.5	8.7	9.6	9.2	10.0	10.4
12H	10.0	10.8	10.5	11.2	11.6	8.7	9.5	9.2	9.9	10.3
8H 4H	9.3	10.2	9.7	10.6	10.9	8.6	9.5	9.0	9.8	10.2
6H	10.0	10.7	10.5	11.1	11.6	9.1	9.8	9.5	10.2	10.6
8H	10.3	10.9	10.7	11.3	11.8	9.2	9.8	9.6	10.2	10.7
12H	10.5	11.0	11.0	11.5	12.0	9.2	9.7	9.6	10.2	10.6
12H 4H	9.3	10.1	9.7	10.5	10.9	8.6	9.4	9.0	9.8	10.2
6H	10.0	10.7	10.5	11.1	11.6	9.1	9.7	9.6	10.2	10.6
8H	10.3	10.9	10.8	11.3	11.8	9.2	9.8	9.7	10.2	10.7
Variations with the observer position at spacings:										
S = 1.0H	+ 0.2 / - 0.2					+ 0.2 / - 0.3				
1.5H	+ 0.2 / - 0.3					+ 0.2 / - 0.4				
2.0H	+ 0.2 / - 0.3					+ 0.2 / - 0.4				

CIE Pub.117, 240.7 lm Total Lamp Luminous Flux Corrected (8log(F/F0) = -4.9)

C Range: 0 - 360DEG
 C Interval: 15.0DEG
 Test Speed: HIGH
 Temperature:25.3DEG
 Operators:LiuLiwen
 Test Date:2022-09-29

g Range: 0 - 180DEG
 g Interval: 1.0DEG
 Test System:EVERFINE GO-SPEX500_V1 SYSTEM V2.0.402
 Humidity:65.0%
 Test Distance:3.010m [K=1.0000]
 Remarks:

UTILIZATION FACTORS TABLE

Test:U:121.47V I:0.1814A P:20.182W PF:0.5203 Freq:59.98Hz Lamp Flux:240.69x1 lm		
NAME: ASD-UCS-9D3CC-3000K	TYPE:	WEIGHT:
SPEC.:	DIM.:	SERIAL No.:
MFR.: ASDLigtigcorp	SUR.:	Shielding Angle:

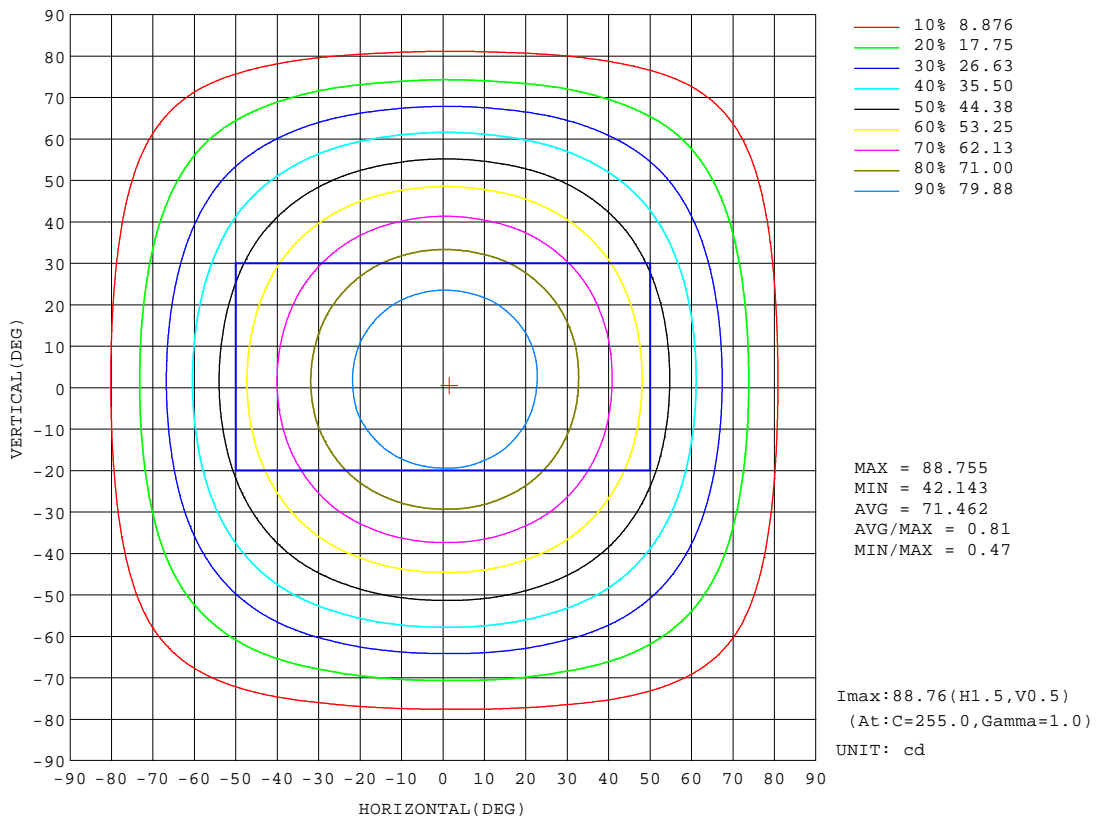
REFLECTANCE										
Ceiling	0.8	0.8	0.8	0.7	0.7	0.7	0.5	0.5	0.5	0
Walls	0.7	0.5	0.3	0.7	0.5	0.3	0.7	0.5	0.3	0
Working plane	0.2	0.2	0.2	0.2	0.2	0.2	0.2	0.2	0.2	0
ROOM INDEX	UTILIZATION FACTORS(PERCENT) $k(RI) \times RCR = 5$									
k = 0.60	58	47	40	57	46	40	56	46	39	33
0.80	68	57	49	67	56	49	65	55	49	42
1.00	77	66	58	75	65	58	73	66	58	50
1.25	84	73	66	82	73	66	79	71	65	58
1.50	89	79	72	87	78	71	84	76	70	63
2.00	95	87	81	93	86	80	90	83	78	70
2.50	99	92	86	97	90	85	93	87	83	74
3.00	103	96	90	100	94	89	96	91	87	79
4.00	106	101	96	104	99	95	100	96	92	83
5.00	109	104	100	106	102	99	102	98	95	86
ROOM INDEX	UF(total)									Direct
According to DIN EN 13032-2 2004			Suspended				SHRNOM = 1.25			

C Range: 0 - 360DEG
 C Interval: 15.0DEG
 Test Speed: HIGH
 Temperature:25.3DEG
 Operators:LiuLiwen
 Test Date:2022-09-29

g Range: 0 - 180DEG
 g Interval: 1.0DEG
 Test System:EVERFINE GO-SPEX500_V1 SYSTEM V2.0.402
 Humidity:65.0%
 Test Distance:3.010m [K=1.0000]
 Remarks:

ISOCANDELA DIAGRAM

Test:U:121.47V I:0.1814A P:20.182W PF:0.5203 Freq:59.98Hz Lamp Flux:240.69x1 lm		
NAME: ASD-UCS-9D3CC-3000K	TYPE:	WEIGHT:
SPEC.:	DIM.:	SERIAL No.:
MFR.: ASDLigtigcorp	SUR.:	Shielding Angle:



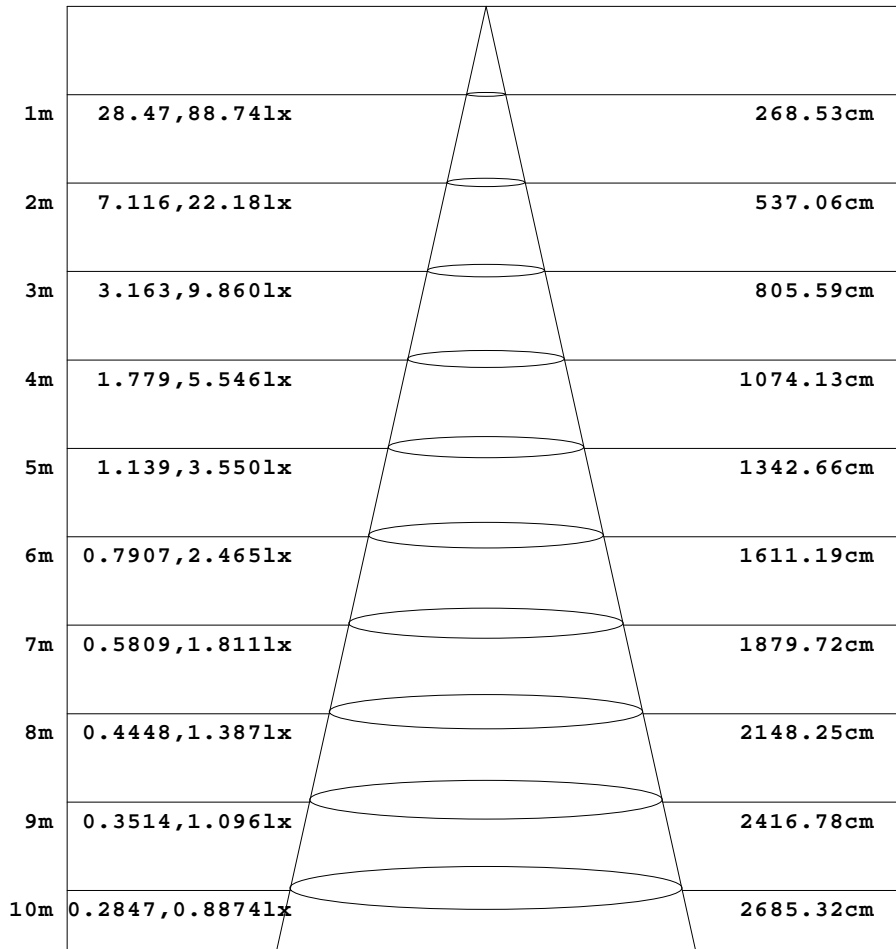
C Range: 0 - 360DEG
C Interval: 15.0DEG
Test Speed: HIGH
Temperature: 25.3DEG
Operators: LiuLiwen
Test Date: 2022-09-29

g Range: 0 - 180DEG
g Interval: 1.0DEG
Test System: EVERFINE GO-SPEX500_V1 SYSTEM V2.0.402
Humidity: 65.0%
Test Distance: 3.010m [K=1.0000]
Remarks:

AAI Figure

Test:U:121.47V I:0.1814A P:20.182W PF:0.5203 Freq:59.98Hz Lamp Flux:240.69x1 lm		
NAME: ASD-UCS-9D3CC-3000K	TYPE:	WEIGHT:
SPEC.:	DIM.:	SERIAL No.:
MFR.: ASDLigtigcorp	SUR.:	Shielding Angle:

Flux out:169.4 lm



Height Eavg, Emax Angle:106.64deg Diameter

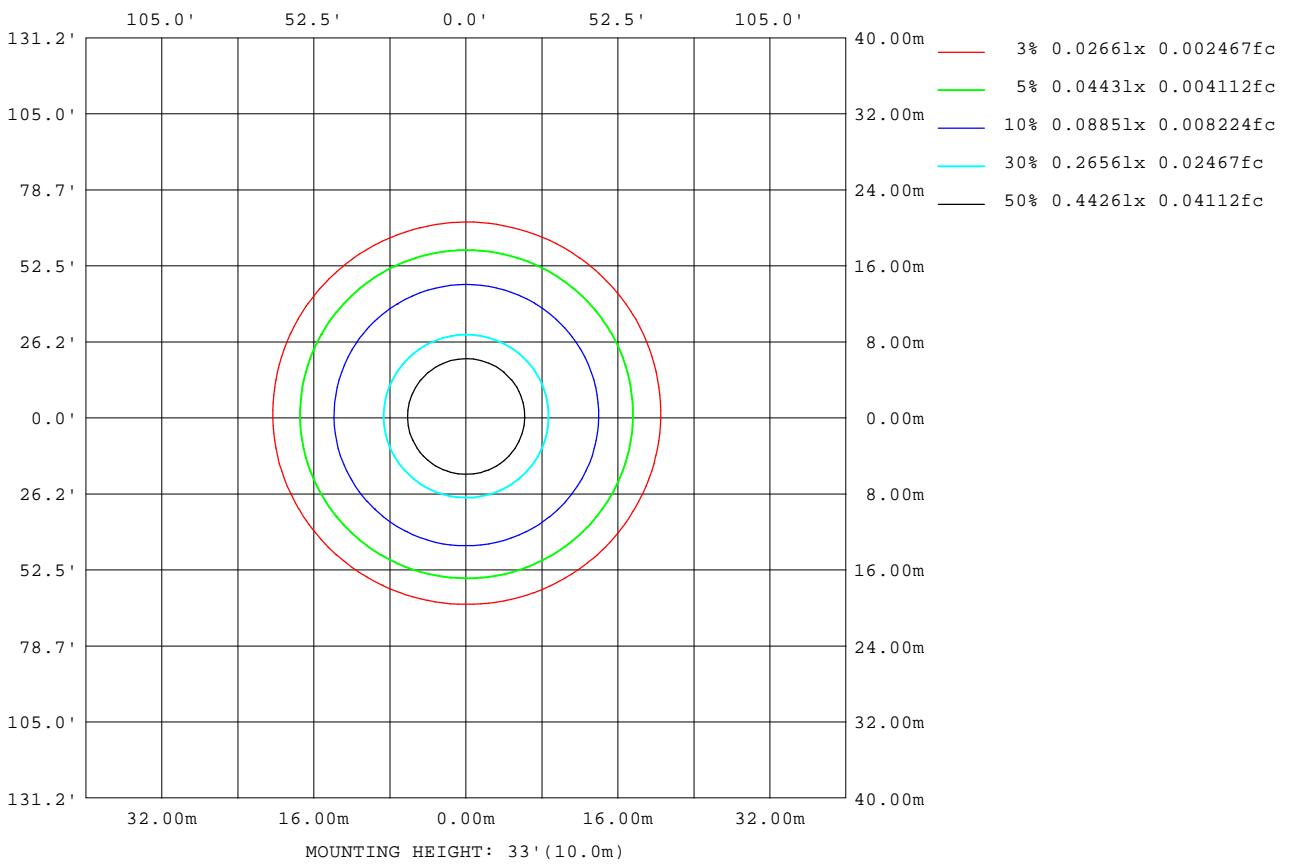
Note:The Curves indicate the illuminated area and the average illumination when the luminaire is at different distance.

C Range: 0 - 360DEG
 C Interval: 15.0DEG
 Test Speed: HIGH
 Temperature:25.3DEG
 Operators:LiuLiwen
 Test Date:2022-09-29

g Range: 0 - 180DEG
 g Interval: 1.0DEG
 Test System:EVERFINE GO-SPEX500_V1 SYSTEM V2.0.402
 Humidity:65.0%
 Test Distance:3.010m [K=1.0000]
 Remarks:

ISOLUX DIAGRAM

Test:U:121.47V I:0.1814A P:20.182W PF:0.5203 Freq:59.98Hz Lamp Flux:240.69x1 lm		
NAME: ASD-UCS-9D3CC-3000K	TYPE:	WEIGHT:
SPEC.:	DIM.:	SERIAL No.:
MFR.: ASDLigtigcorp	SUR.:	Shielding Angle:



C Range: 0 - 360DEG
 C Interval: 15.0DEG
 Test Speed: HIGH
 Temperature:25.3DEG
 Operators:LiuLiwen
 Test Date:2022-09-29

g Range: 0 - 180DEG
 g Interval: 1.0DEG
 Test System:EVERFINE GO-SPEX500_V1 SYSTEM V2.0.402
 Humidity:65.0%
 Test Distance:3.010m [K=1.0000]
 Remarks:

LED Avg.L Report

Test:U:121.47V I:0.1814A P:20.182W PF:0.5203 Freq:59.98Hz Lamp Flux:240.69x1 lm		
NAME: ASD-UCS-9D3CC-3000K	TYPE:	WEIGHT:
SPEC.:	DIM.:	SERIAL No.:
MFR.: ASDLigtigcorp	SUR.:	Shielding Angle:

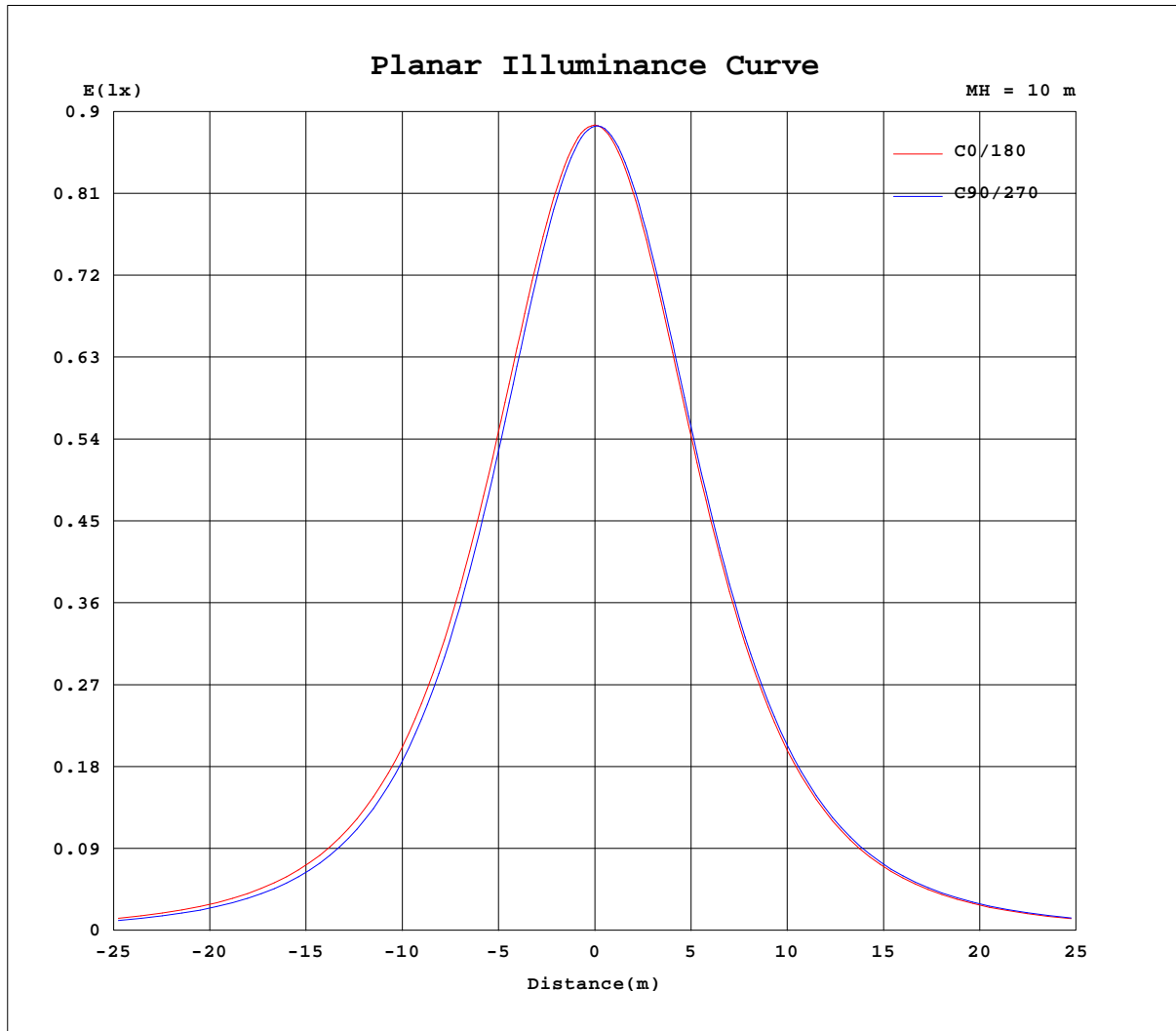
AvgL	cd/m2
L_0~180(65)av	140
L_0~180(75)av	122
L_0~180(85)av	89
L_90~270(65)av	133
L_90~270(75)av	111
L_90~270(85)av	62
L_45(65)av	136
L_45(75)av	116
L_45(85)av	71

Standard: GB/T 29293-2012

C Range: 0 - 360DEG
 C Interval: 15.0DEG
 Test Speed: HIGH
 Temperature:25.3DEG
 Operators:LiuLiwen
 Test Date:2022-09-29

g Range: 0 - 180DEG
 g Interval: 1.0DEG
 Test System:EVERFINE GO-SPEX500_V1 SYSTEM V2.0.402
 Humidity:65.0%
 Test Distance:3.010m [K=1.0000]
 Remarks:

Planar Illuminance Curve



C Range: 0 - 360DEG
 C Interval: 15.0DEG
 Test Speed: HIGH
 Temperature: 25.3DEG
 Operators: LiuLiwen
 Test Date: 2022-09-29

g Range: 0 - 180DEG
 g Interval: 1.0DEG
 Test System: EVERFINE GO-SPEX500_V1 SYSTEM V2.0.402
 Humidity: 65.0%
 Test Distance: 3.010m [K=1.0000]
 Remarks:

LUMINOUS DISTRIBUTION INTENSITY DATA

Test:U:121.47V I:0.1814A P:20.182W PF:0.5203 Freq:59.98Hz Lamp Flux:240.69x1 lm		
NAME: ASD-UCS-9D3CC-3000K	TYPE:	WEIGHT:
SPEC.:	DIM.:	SERIAL No.:
MFR.: ASDLigtigcorp	SUR.:	Shielding Angle:

Table--1

UNIT: cd

C(DEG) g (DEG)	0	15	30	45	60	75	90	105	120	135	150	165	180	195	210	225	240	255	270
0	88.6	88.6	88.6	88.6	88.6	88.6	88.6	88.6	88.6	88.6	88.6	88.6	88.6	88.6	88.6	88.6	88.6	88.6	88.6
5	88.2	88.0	87.9	87.9	87.8	87.8	87.7	87.6	87.7	87.7	87.8	87.9	88.0	88.1	88.2	88.3	88.4	88.4	88.5
10	86.8	86.7	86.5	86.2	86.0	86.0	85.8	85.8	85.9	86.0	86.2	86.4	86.6	86.7	86.9	87.1	87.2	87.4	87.4
15	84.7	84.4	84.1	83.8	83.4	83.3	83.1	83.1	83.2	83.4	83.6	84.0	84.3	84.5	84.8	85.0	85.2	85.3	85.4
20	81.8	81.4	80.9	80.5	80.0	79.8	79.6	79.6	79.7	80.0	80.3	80.8	81.2	81.5	81.8	82.0	82.2	82.4	82.5
25	78.0	77.6	77.0	76.4	75.9	75.5	75.3	75.3	75.5	75.9	76.3	76.9	77.3	77.7	78.1	78.2	78.5	78.7	78.9
30	73.6	73.1	72.4	71.7	71.1	70.7	70.4	70.5	70.6	71.1	71.6	72.3	72.9	73.2	73.6	73.8	74.1	74.2	74.4
35	68.6	68.0	67.2	66.5	65.7	65.3	65.0	65.1	65.3	65.8	66.4	67.1	67.8	68.2	68.6	68.8	69.1	69.1	69.4
40	63.1	62.4	61.5	60.8	59.9	59.4	59.1	59.2	59.4	60.0	60.7	61.5	62.2	62.6	63.0	63.2	63.5	63.6	63.8
45	57.1	56.4	55.5	54.6	53.7	53.2	52.8	52.9	53.2	53.9	54.6	55.4	56.1	56.6	57.0	57.2	57.4	57.5	57.8
50	50.7	50.0	49.0	48.1	47.2	46.7	46.3	46.4	46.7	47.3	48.1	49.0	49.8	50.2	50.7	50.8	51.1	51.1	51.4
55	44.0	43.3	42.3	41.4	40.4	39.8	39.5	39.6	39.8	40.6	41.3	42.3	43.1	43.6	44.0	44.1	44.3	44.4	44.6
60	37.1	36.4	35.3	34.4	33.5	32.9	32.5	32.6	32.9	33.6	34.4	35.4	36.1	36.6	37.1	37.2	37.4	37.5	37.7
65	30.0	29.3	28.3	27.4	26.5	25.9	25.5	25.6	25.9	26.6	27.4	28.3	29.1	29.6	30.0	30.2	30.4	30.4	30.7
70	23.0	22.3	21.4	20.5	19.6	19.1	18.7	18.8	19.0	19.7	20.4	21.3	22.1	22.6	23.0	23.1	23.4	23.4	23.6
75	16.2	15.6	14.6	13.9	13.0	12.5	12.1	12.2	12.4	13.2	13.8	14.7	15.4	15.8	16.2	16.3	16.5	16.5	16.8
80	9.87	9.35	8.51	7.69	6.83	6.36	6.02	6.09	6.35	7.01	7.69	8.44	9.09	9.47	9.83	9.84	10.1	10.0	10.3
85	4.23	3.73	2.73	2.03	1.48	1.25	1.09	1.13	1.24	1.64	2.25	2.96	3.51	3.81	4.06	4.09	4.19	4.19	4.33
90	0.02	0.02	0.02	0.02	0.02	0.02	0.02	0.02	0.02	0.02	0.02	0.03	0.00	0.00	0.01	0.03	0.11	0.17	0.25
95	0.04	0.04	0.05	0.05	0.04	0.05	0.05	0.05	0.05	0.05	0.05	0.05	0.03	0.02	0.02	0.02	0.02	0.01	0.02
100	0.08	0.07	0.08	0.08	0.09	0.08	0.08	0.08	0.08	0.09	0.08	0.08	0.06	0.05	0.05	0.05	0.04	0.04	0.04
105	0.10	0.10	0.11	0.11	0.11	0.12	0.11	0.11	0.11	0.11	0.11	0.11	0.09	0.08	0.07	0.08	0.07	0.07	0.07
110	0.14	0.13	0.14	0.14	0.14	0.14	0.14	0.14	0.14	0.14	0.14	0.13	0.12	0.10	0.10	0.10	0.09	0.09	0.10
115	0.16	0.16	0.16	0.16	0.16	0.16	0.17	0.17	0.16	0.16	0.17	0.16	0.13	0.12	0.12	0.13	0.12	0.12	0.12
120	0.19	0.18	0.19	0.18	0.19	0.19	0.19	0.18	0.18	0.18	0.18	0.18	0.15	0.14	0.14	0.14	0.14	0.15	0.15
125	0.20	0.19	0.20	0.20	0.21	0.21	0.20	0.20	0.20	0.19	0.19	0.18	0.16	0.15	0.14	0.15	0.15	0.15	0.16
130	0.21	0.20	0.21	0.21	0.21	0.22	0.22	0.22	0.21	0.20	0.19	0.19	0.16	0.15	0.15	0.16	0.16	0.17	0.17
135	0.21	0.20	0.22	0.22	0.22	0.23	0.23	0.22	0.22	0.21	0.20	0.19	0.16	0.15	0.15	0.16	0.17	0.18	0.19
140	0.21	0.21	0.22	0.23	0.23	0.23	0.23	0.22	0.22	0.21	0.20	0.19	0.16	0.15	0.15	0.15	0.17	0.17	0.18
145	0.21	0.21	0.23	0.22	0.23	0.24	0.23	0.23	0.21	0.21	0.20	0.19	0.16	0.15	0.16	0.16	0.16	0.17	0.18
150	0.21	0.20	0.21	0.22	0.23	0.24	0.23	0.22	0.21	0.21	0.18	0.19	0.15	0.15	0.15	0.15	0.15	0.16	0.17
155	0.19	0.19	0.20	0.21	0.22	0.24	0.23	0.21	0.20	0.19	0.17	0.18	0.14	0.14	0.14	0.15	0.15	0.16	0.18
160	0.19	0.19	0.18	0.19	0.20	0.22	0.21	0.20	0.18	0.17	0.16	0.16	0.13	0.13	0.11	0.14	0.15	0.15	0.17
165	0.17	0.17	0.17	0.17	0.18	0.19	0.18	0.17	0.16	0.14	0.15	0.15	0.13	0.11	0.11	0.10	0.12	0.14	0.15
170	0.16	0.17	0.17	0.17	0.16	0.16	0.16	0.15	0.15	0.14	0.14	0.14	0.13	0.11	0.10	0.11	0.11	0.13	0.13
175	0.15	0.16	0.17	0.17	0.16	0.16	0.17	0.15	0.15	0.15	0.13	0.13	0.13	0.11	0.11	0.12	0.12	0.13	0.13
180	0.14	0.14	0.15	0.16	0.15	0.16	0.15	0.16	0.15	0.16	0.16	0.15	0.14	0.14	0.15	0.16	0.15	0.16	0.16

C Range: 0 - 360DEG
 C Interval: 15.0DEG
 Test Speed: HIGH
 Temperature:25.3DEG
 Operators:LiuLiwen
 Test Date:2022-09-29

g Range: 0 - 180DEG
 g Interval: 1.0DEG
 Test System:EVERFINE GO-SPEX500_V1 SYSTEM V2.0.402
 Humidity:65.0%
 Test Distance:3.010m [K=1.0000]
 Remarks:

LUMINOUS DISTRIBUTION INTENSITY DATA

Test:U:121.47V I:0.1814A P:20.182W PF:0.5203 Freq:59.98Hz Lamp Flux:240.69x1 lm		
NAME: ASD-UCS-9D3CC-3000K	TYPE:	WEIGHT:
SPEC.:	DIM.:	SERIAL No.:
MFR.: ASDLigtigcorp	SUR.:	Shielding Angle:

Table--2

UNIT: cd

C(DEG) g (DEG)	285	300	315	330	345															
0	88.6	88.6	88.6	88.6	88.6															
5	88.5	88.5	88.4	88.4	88.2															
10	87.4	87.4	87.3	87.2	87.1															
15	85.4	85.5	85.3	85.3	85.0															
20	82.5	82.6	82.5	82.4	82.1															
25	78.8	78.9	78.8	78.8	78.4															
30	74.4	74.5	74.4	74.4	74.1															
35	69.4	69.6	69.5	69.5	69.1															
40	63.8	64.0	64.0	63.9	63.6															
45	57.8	58.0	58.0	58.0	57.6															
50	51.4	51.6	51.6	51.6	51.3															
55	44.7	44.9	44.9	45.0	44.6															
60	37.7	38.0	38.0	38.0	37.6															
65	30.7	30.9	30.9	30.9	30.6															
70	23.7	23.9	23.8	23.9	23.5															
75	16.7	17.0	16.9	17.0	16.7															
80	10.2	10.5	10.4	10.6	10.3															
85	4.38	4.58	4.63	4.74	4.58															
90	0.23	0.24	0.16	0.10	0.03															
95	0.01	0.01	0.02	0.02	0.03															
100	0.04	0.04	0.04	0.05	0.06															
105	0.08	0.07	0.07	0.08	0.09															
110	0.09	0.09	0.09	0.10	0.11															
115	0.12	0.12	0.12	0.12	0.14															
120	0.14	0.13	0.14	0.15	0.16															
125	0.16	0.16	0.16	0.16	0.17															
130	0.17	0.17	0.17	0.16	0.17															
135	0.18	0.17	0.17	0.17	0.17															
140	0.19	0.17	0.17	0.18	0.18															
145	0.19	0.16	0.17	0.19	0.18															
150	0.18	0.18	0.17	0.17	0.17															
155	0.17	0.17	0.17	0.15	0.16															
160	0.17	0.16	0.15	0.14	0.15															
165	0.16	0.14	0.13	0.14	0.15															
170	0.13	0.13	0.14	0.14	0.15															
175	0.13	0.13	0.14	0.15	0.15															
180	0.15	0.15	0.16	0.15	0.15															

C Range: 0 - 360DEG
 C Interval: 15.0DEG
 Test Speed: HIGH
 Temperature:25.3DEG
 Operators:LiuLiwen
 Test Date:2022-09-29

g Range: 0 - 180DEG
 g Interval: 1.0DEG
 Test System:EVERFINE GO-SPEX500_V1 SYSTEM V2.0.402
 Humidity:65.0%
 Test Distance:3.010m [K=1.0000]
 Remarks: