



LED OUTDOOR WALL SCONCE

► **DESIGN** - LED OUTDOOR WALL SCONCE has a modern, multipurpose design and a stylish look with efficient lighting. Durable housing resistant to rust and impact provides many years of service. The acrylic lens with a 350° beam angle grants you even light distribution. It is designed to operate on 120-277V circuits and provides smooth triac dimming capabilities ranging from 10% to 100%.

► **COLOR SELECTABLE** - You can choose either a 3,000K warm white, 4,000K cool white or 5,000K daylight color temperature.

► **INSTALLATION** - Quick and easy installation, the fixture can be installed on standard 2.75" or 3.5" outlet box. The additional mounting holes provide secure installation options.

► **APPLICATION** - The fixture is rated for Wet Locations, making it perfect for indoor and outdoor projects such as decks, front doors, porches, patios, corridors, walkways, or any other common areas.

► **ADVANTAGES** - With a lifespan of 50,000 hours, these fixtures are made to last decades under normal operation! ASD provides a 5-year limited warranty along with ETL certification to guarantee top quality products and safety!

Catalog number	
Notes	
Type	



Finish: White Black

Model	Size	Watts	Voltage	Dimmable	Lumens	CCT	Finish	Dimensions (LxWxH)
ASD-LWS27-18D18CC-WH	18 inch	18W	120 V	TRIAC	1,364/1,541/1,430 lm	3CCT (3,000/4,000/5,000 K)	White	18" x 5-7/8" x 1-13/16"
ASD-LWS27-MV-18D18CC-BK	18 inch	18W	120-277 V	TRIAC	1,404/1,636/1,550 lm	3CCT (3,000/4,000/5,000 K)	Black	18" x 5-7/8" x 1-13/16"
ASD-LWS27A-18D18BK	18 inch	18W	120-277 V	TRIAC	1,296/1,573/1,507 lm	3CCT (3,000/4,000/5,000 K)	Black	18" x 5-7/8" x 1-13/16"
ASD-LWS27-24D24CC-WH	24 inch	24W	120 V	TRIAC	1,875/2,204/2,061 lm	3CCT (3,000/4,000/5,000 K)	White	24" x 5-7/8" x 1-13/16"
ASD-LWS27-MV-24D24CC-BK	24 inch	24W	120-277 V	TRIAC	1,810/2,134/2,012 lm	3CCT (3,000/4,000/5,000 K)	Black	24" x 5-7/8" x 1-13/16"
ASD-LWS27A-24D24BK	24 inch	24W	120-277 V	TRIAC	1,652/2,001/1,933 lm	3CCT (3,000/4,000/5,000 K)	Black	24" x 5-7/8" x 1-13/16"
ASD-LWS27-36D30CC-WH	36 inch	30W	120 V	TRIAC	2,226/2,465/2,304 lm	3CCT (3,000/4,000/5,000 K)	White	36" x 5-7/8" x 1-13/16"
ASD-LWS27-MV-36D30CC-BK	36 inch	30W	120-277 V	TRIAC	2,318/2,642/2,514 lm	3CCT (3,000/4,000/5,000 K)	Black	36" x 5-7/8" x 1-13/16"
ASD-LWS27A-36D30BK	36 inch	30W	120-277 V	TRIAC	2,000/2,356/2,327 lm	3CCT (3,000/4,000/5,000 K)	Black	36" x 5-7/8" x 1-13/16"
ASD-LWS27-48D36CC-WH	48 inch	36W	120 V	TRIAC	2,598/2,844/2,685 lm	3CCT (3,000/4,000/5,000 K)	White	48-1/16" x 5-7/8" x 1-13/16"
ASD-LWS27-MV-48D36CC-BK	48 inch	36W	120-277 V	TRIAC	2,595/2,933/2,838 lm	3CCT (3,000/4,000/5,000 K)	Black	48-1/16" x 5-7/8" x 1-13/16"
ASD-LWS27A-48D36BK	48 inch	36W	120-277 V	TRIAC	2,549/2,980/2,965 lm	3CCT (3,000/4,000/5,000 K)	Black	48" x 5-7/8" x 1-13/16"
ASD-LWS27-MV-72D40CC-BK	72 inch	40W	120-277 V	TRIAC	3,374/3,541/3,284 lm	3CCT (3,000/4,000/5,000 K)	Black	72" x 5-7/8" x 1-13/16"
ASD-LWS27A-72D40BK	72 inch	40W	120-277 V	TRIAC	3,108/3,577/3,620 lm	3CCT (3,000/4,000/5,000 K)	Black	72" x 5-7/8" x 1-13/16"

PRODUCT SPECIFICATIONS:

Construction & Materials				
Housing	Steel			
Lens	Acrylic			
Finish	White, Black			
Weight	ASD-LWS27-18D18CC-WH	5.4 lbs (2.4 kg)	ASD-LWS27-MV-36D30CC-BK	11 lbs (5 kg)
	ASD-LWS27-MV-18D18CC-BK		ASD-LWS27A-36D30BK	10.1 lbs (4.6 kg)
	ASD-LWS27A-18D18BK	5.1 lbs (2.3 kg)	ASD-LWS27-48D36CC-WH	14.5 lbs (6.6 kg)
	ASD-LWS27-24D24CC-WH	6.9 lbs (3.1 kg)	ASD-LWS27-MV-48D36CC-BK	
	ASD-LWS27-MV-24D24CC-BK		ASD-LWS27A-48D36BK	13.7 lbs (6.2 kg)
	ASD-LWS27A-24D24BK		ASD-LWS27-MV-72D40CC-BK	24.9 lbs (11.3 kg)
ASD-LWS27-36D30CC-WH	11 lbs (5 kg)	ASD-LWS27A-72D40BK	21.6 lbs (9.8 kg)	
Environmental system				
Work environment	Suitable for Wet Locations			
Operating temperature	-40°F to 113°F (-40°C to 45°C)			
L-70 Life	> 50,000 hrs			

For most up-to-date spec sheets please refer to asd-lighting.com



LED OUTDOOR WALL SCONCE

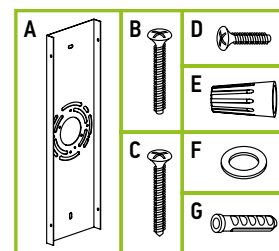
Optical system				
Luminous flux	ASD-LWS27-18D18CC-WH	1,364/1,541/1,430 lm	ASD-LWS27-MV-36D30CC-BK	2,318/2,642/2,514 lm
	ASD-LWS27-MV-18D18CC-BK	1,404/1,636/1,550 lm	ASD-LWS27A-36D30BK	2,000/2,356/2,327 lm
	ASD-LWS27A-18D18BK	1,296/1,573/1,507 lm	ASD-LWS27-48D36CC-WH	2,598/2,844/2,685 lm
	ASD-LWS27-24D24CC-WH	1,875/2,204/2,061 lm	ASD-LWS27-MV-48D36CC-BK	2,595/2,933/2,838 lm
	ASD-LWS27-MV-24D24CC-BK	1,810/2,134/2,012 lm	ASD-LWS27A-48D36BK	2,549/2,980/2,965 lm
	ASD-LWS27A-24D24BK	1,652/2,001/1,933 lm	ASD-LWS27-MV-72D40CC-BK	3,374/3,541/3,284 lm
	ASD-LWS27-36D30CC-WH	2,226/2,465/2,304 lm	ASD-LWS27A-72D40BK	3,108/3,577/3,620 lm
Color temperature	3CCT switch (3,000/4,000/5,000 K), 3,000 K by default			
CRI	> 80			

Electrical system				
Input voltage	120 V for LWS27A, LWS27C and MV models: 120-277 V			
Max input current	ASD-LWS27-18D18CC-WH	0.17 A	ASD-LWS27-MV-36D30CC-BK	0.3 A
	ASD-LWS27-MV-18D18CC-BK	0.3 A	ASD-LWS27A-36D30BK	
	ASD-LWS27A-18D18BK		ASD-LWS27-48D36CC-WH	0.33 A
	ASD-LWS27-24D24CC-WH	0.22 A	ASD-LWS27-MV-48D36CC-BK	0.5 A
	ASD-LWS27-MV-24D24CC-BK	0.3 A	ASD-LWS27A-48D36BK	
	ASD-LWS27A-24D24BK		ASD-LWS27-MV-72D40CC-BK	
ASD-LWS27-36D30CC-WH	0.28 A	ASD-LWS27A-72D40BK		
Inrush current (Action time)	ASD-LWS27-18D18CC-WH	0.15 A (0.1 S)	ASD-LWS27-MV-36D30CC-BK	0.2 A (0.1 S)
	ASD-LWS27-MV-18D18CC-BK	0.2 A (0.1 S)	ASD-LWS27A-36D30BK	0.3 A (0.1 S)
	ASD-LWS27A-18D18BK		ASD-LWS27-48D36CC-WH	
	ASD-LWS27-24D24CC-WH		ASD-LWS27-MV-48D36CC-BK	0.4 A (0.1 S)
	ASD-LWS27-MV-24D24CC-BK		ASD-LWS27A-48D36BK	
	ASD-LWS27A-24D24BK	ASD-LWS27-MV-72D40CC-BK	0.25 A (0.1 S)	
ASD-LWS27-36D30CC-WH	ASD-LWS27A-72D40BK			
Off state power	0W			
Power consumption	ASD-LWS27-18D18CC-WH	18W	ASD-LWS27-MV-36D30CC-BK	30W
	ASD-LWS27-MV-18D18CC-BK		ASD-LWS27A-36D30BK	
	ASD-LWS27A-18D18BK		ASD-LWS27-48D36CC-WH	
	ASD-LWS27-24D24CC-WH	24W	ASD-LWS27-MV-48D36CC-BK	36W
	ASD-LWS27-MV-24D24CC-BK		ASD-LWS27A-48D36BK	
	ASD-LWS27A-24D24BK		ASD-LWS27-MV-72D40CC-BK	40W
ASD-LWS27-36D30CC-WH	30W	ASD-LWS27A-72D40BK		
Power factor	> 0.9			
Output voltage	ASD-LWS27-18D18CC-WH	36 V	ASD-LWS27-MV-36D30CC-BK	18-40 V
	ASD-LWS27-MV-18D18CC-BK	18-40 V	ASD-LWS27A-36D30BK	
	ASD-LWS27A-18D18BK		ASD-LWS27-48D36CC-WH	36 V
	ASD-LWS27-24D24CC-WH		36 V	ASD-LWS27-MV-48D36CC-BK
	ASD-LWS27-MV-24D24CC-BK	18-40 V	ASD-LWS27A-48D36BK	27-41 V
	ASD-LWS27A-24D24BK		ASD-LWS27-MV-72D40CC-BK	21-41 V
	ASD-LWS27-36D30CC-WH	36 V	ASD-LWS27A-72D40BK	27-41 V
Max output current	ASD-LWS27-18D18CC-WH	0.45 A	ASD-LWS27-MV-36D30CC-BK	0.7 A
	ASD-LWS27-MV-18D18CC-BK		ASD-LWS27A-36D30BK	
	ASD-LWS27A-18D18BK		ASD-LWS27-48D36CC-WH	0.85 A
	ASD-LWS27-24D24CC-WH	ASD-LWS27-MV-48D36CC-BK		
	ASD-LWS27-MV-24D24CC-BK	0.6 A	ASD-LWS27A-48D36BK	1 A
	ASD-LWS27A-24D24BK	0.7 A	ASD-LWS27-MV-72D40CC-BK	
	ASD-LWS27-36D30CC-WH		ASD-LWS27A-72D40BK	
Surge protection DM/CM	1.25 kV / 1.25 kV			

Dimming range		
10-100%		
Dimming compatible controls		
Brand	Lutron	Leviton
Models	MACL-153MLH-WH	R02-DW6HD-2RW
	STCL-153PH-WH	R00-RNL06-0TW
	PD-6WCL-WH-R	R68-06674-P0T
	DVCL-153PR	DSL06
P-PKG1W		
Regular and voluntary certifications		
5-year limited warranty		
cETLus certified 4001256		

PACKAGE CONTENTS:

Description	Q-ty
LED Outdoor Wall Sconce	1
Mounting plate (A)	1
Mounting screw (B)	2
Self-tapping screw (C)	2
Fixture screw (D)	4
Wire nut (E)	3
Waterproof gasket (F)	4
Anchor (G)	2
Box	1



For most up-to-date spec sheets please refer to asd-lighting.com



LED OUTDOOR WALL SCENCE

INSTALLATION GUIDE

IMPORTANT SAFETY INFORMATION:

Please read all the instructions below before installation.

- ▶ Make sure that the supply voltage corresponds to the rated product voltage.
- ▶ The product must be installed by a qualified electrician in accordance with the National Electrical Code and corresponding local codes.
- ▶ If the product is damaged, do not use it.

⚠ WARNING

RISK OF PERSONAL INJURY – READ and follow all WARNINGS and installation instructions. Keep or give to the owner for future reference.

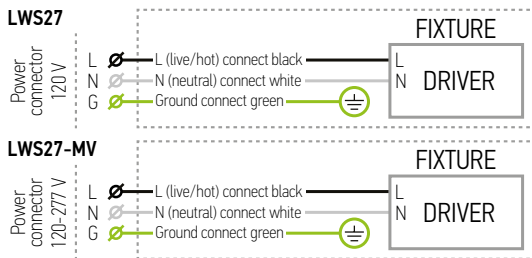
Risk of cuts: Wear gloves to prevent cuts or abrasions when removing from carton, handling, installing, and maintaining this product.

Risk of electric shock: This product must be installed in accordance with the applicable installation code by a person familiar with the construction and operation of the product and the hazards involved.

Risk of Fire: Minimum 194°F supply conductors. Consult a qualified electrician to ensure correct branch circuit conductor.

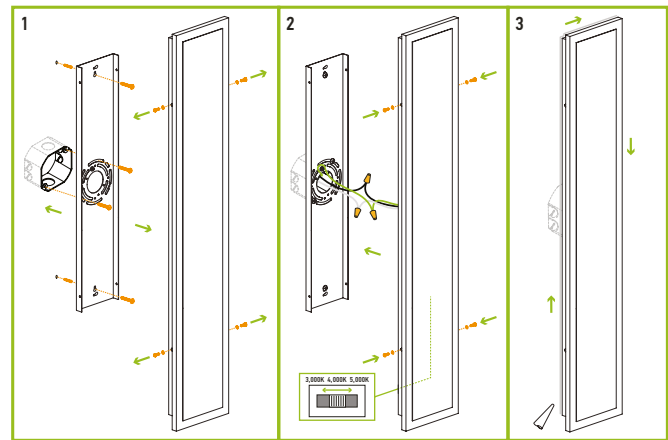
ASD® assumes no responsibility for claims arising out of improper or careless installation or handling of this product.

ELECTRICAL SCHEMATIC DIAGRAM:



INSTALLATION STEPS:

1. Unscrew the four fixture screws from both sides and remove the mounting plate. The fixture can be installed on standard 2.75" or 3.5" outlet box. Attach the mounting plate to the outlet box and mark the location of the holes, drill two holes for anchors, insert anchors into the holes, twist the two self-tapping screws. Attach the mounting plate to the outlet box using two mounting screws and tighten self-tapping screws.
2. Connect the wires: Black to Black, White to White, Ground to Ground. Secure the connection with wire nuts. Choose preferred color temperature by adjusting the switch position. Put the waterproof gasket on each fixture screw. Place the wall sconce on the mounting plate and secure it using four fixture screws.
3. For outdoor locations please use silicone (not included) shown in the picture below.



ORDERING INFORMATION

Model	UPC	Pcs. per carton	Carton size	Carton weight	GTIN 14
ASD-LWS27-18D18CC-WH	810050738088	4	23.6" x 18.5" x 9.8"	28 lbs	10810050738085
ASD-LWS27-MV-18D18CC-BK	810128110495	4	23.6" x 18.5" x 9.8"	28 lbs	10810128110492
ASD-LWS27A-18D18BK	810128112932	2	23.6" x 9.5" x 9.8"	11.5 lbs	10810128112939
ASD-LWS27-24D24CC-WH	810050738101	4	29.5" x 18.5" x 9.8"	34.8 lbs	10810050738108
ASD-LWS27-MV-24D24CC-BK	810128110501	4	29.5" x 18.5" x 9.8"	34.8 lbs	10810128110508
ASD-LWS27A-24D24BK	810128112949	2	29.5" x 9.5" x 9.8"	15 lbs	10810128112946
ASD-LWS27-36D30CC-WH	810050738125	2	41.5" x 9.5" x 9.8"	26.7 lbs	20810050738129
ASD-LWS27-MV-36D30CC-BK	810128110518	2	41.5" x 9.5" x 9.8"	26.7 lbs	10810128110515
ASD-LWS27A-36D30BK	810128112956	2	41.5" x 9.5" x 9.8"	24.3 lbs	10810128112953
ASD-LWS27-48D36CC-WH	810050738149	2	53.5" x 9.5" x 9.8"	35 lbs	20810050738143
ASD-LWS27-MV-48D36CC-BK	810128110525	2	53.5" x 9.5" x 9.8"	35 lbs	10810128110522
ASD-LWS27A-48D36BK	810128112963	1	52.8" x 8.7" x 4.3"	15.6 lbs	-
ASD-LWS27-MV-72D40CC-BK	810128110709	1	76.8" x 8.7" x 4.3"	20.9 lbs	-
ASD-LWS27A-72D40BK	810128114196	1	76.8" x 8.7" x 4.3"	24.3 lbs	-

For most up-to-date spec sheets please refer to asd-lighting.com