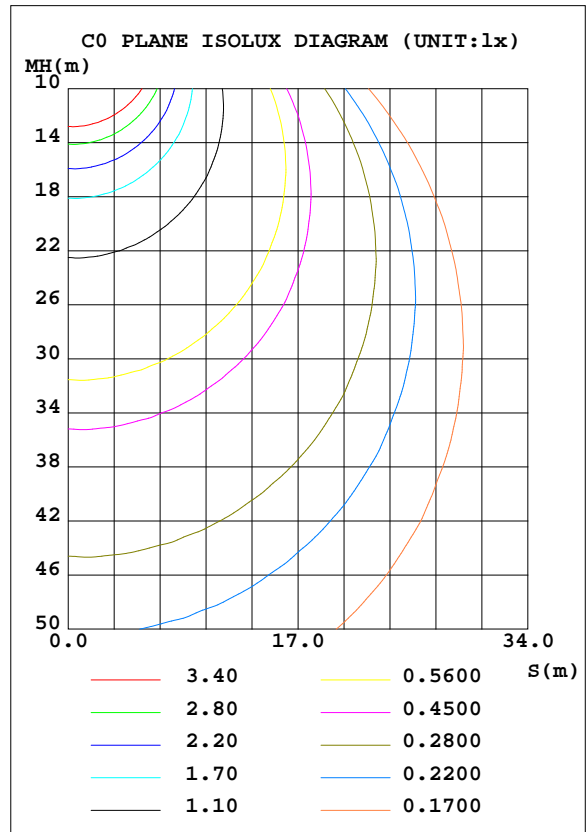
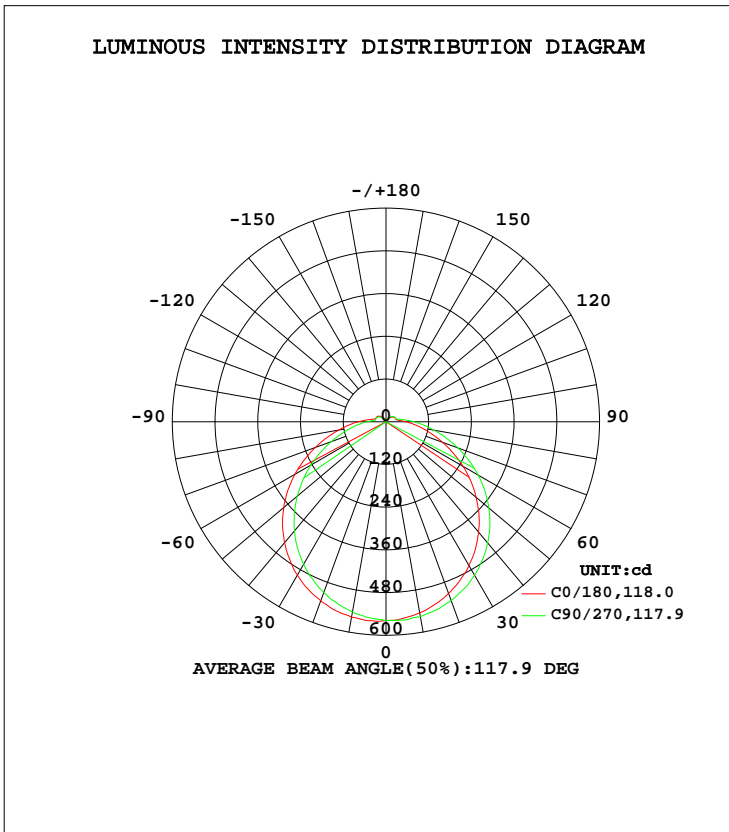


LUMINAIRE PHOTOMETRIC TEST REPORT

Test:U:120.0V I:0.2242A P:26.38W PF:0.9801 Lamp Flux:1954.09x1 lm		
NAME: ASD-LFMDR-MV-16D24CC-EM-NK 5000K	TYPE:N/A	WEIGHT:N/A
SPEC.:N/A	DIM.: N/A	SERIAL No.:N/A
MFR.: ASD Lighting corp	SUR.:N/A	Shielding Angle:N/A

DATA OF LAMP		PHOTOMETRIC DATA Eff: 74.07 lm/W			
MODEL	PSZ2S220523003-10	I <sub>max</sub> (cd)	561.0	S/MH(C0/180)	1.24
NOMINAL POWER(W)		LOR(%)	100.0	S/MH(C90/270)	1.32
RATED VOLTAGE(V)	120	TOTAL FLUX(lm)	1954.1	η UP, DN(C0-180)	4.1,44.1
NOMINAL FLUX(lm)	1954.09	CIE CLASS	DIRECT	η UP, DN(C180-360)	4.4,47.5
LAMPS INSIDE	1	η up(%)	8.4	CIBSE SHR NOM	1.25
TEST VOLTAGE(V)	120	η down(%)	91.6	CIBSE SHR MAX	1.35



C Range: 0 - 360DEG  
 C Interval: 22.5DEG  
 Test Speed: HIGH  
 Temperature:25.4DEG  
 Operators:Carl  
 Test Date:2022-06-04

γ Range: 0 - 180DEG  
 γ Interval: 1.0DEG  
 Test System:EVERFINE GO-R5000\_V2 SYSTEM V2.0.351  
 Humidity:37%  
 Test Distance:2.526m [K=1.0000]  
 Remarks:

ZONAL FLUX DIAGRAM

ZONAL FLUX DIAGRAM:

γ	C0	C45	C90	C135	C180	C225	C270	C315	γ	Φ zone	Φ total	%lum, lamp
10	557.5	549.4	542.5	541.4	545.4	550.1	556.0	556.6	0- 10	52.88	52.88	2.71,2.71
20	535.8	523.0	510.6	508.8	513.4	524.8	534.7	538.1	10- 20	152.1	204.9	10.5,10.5
30	497.6	478.2	462.3	459.0	465.9	483.1	497.6	503.2	20- 30	232.5	437.5	22.4,22.4
40	443.4	419.8	400.4	396.1	404.6	425.6	444.3	450.6	30- 40	283.9	721.4	36.9,36.9
50	374.7	347.4	325.7	321.2	330.8	355.0	377.2	383.8	40- 50	300.1	1021	52.3,52.3
60	295.6	266.4	243.6	238.9	249.6	275.6	298.8	305.5	50- 60	279.5	1301	66.6,66.6
70	211.0	183.5	163.8	159.9	169.2	193.1	214.5	221.1	60- 70	227.9	1529	78.2,78.2
80	135.1	113.6	99.09	96.34	103.0	121.0	137.8	142.8	70- 80	161.2	1690	86.5,86.5
90	77.79	64.00	53.04	51.32	56.47	68.75	79.32	82.60	80- 90	99.15	1789	91.6,91.6
100	40.72	34.12	30.40	30.20	31.31	36.13	40.98	43.13	90-100	53.71	1843	94.3,94.3
110	30.21	29.74	29.81	29.10	28.36	28.00	28.27	29.63	100-110	32.81	1876	96,96
120	29.16	27.71	26.65	26.04	26.16	26.74	27.22	28.91	110-120	28.30	1904	97.4,97.4
130	24.72	22.41	20.96	20.51	20.56	21.83	23.14	24.46	120-130	22.53	1927	98.6,98.6
140	18.36	15.75	14.16	14.33	14.15	15.45	16.73	18.59	130-140	14.92	1942	99.4,99.4
150	11.37	8.998	7.688	8.348	8.085	8.774	9.995	11.44	140-150	7.952	1949	99.8,99.8
160	7.341	4.798	5.488	4.129	4.181	4.641	4.902	5.869	150-160	3.278	1953	99.9,99.9
170	4.102	2.971	3.080	2.075	2.178	2.297	2.701	3.094	160-170	1.145	1954	100,100
180	0.5244	0.9270	0.5009	0.9232	0.9417	0.9385	0.9308	0.9250	170-180	0.2119	1954	100,100
DEG	LUMINOUS INTENSITY:cd									UNIT:lm		

Conical surface Flux(90deg): 871.7 lm

%lum = 44.6%  
%lamp = 44.6%

Conical surface Flux(120deg): 1301 lm

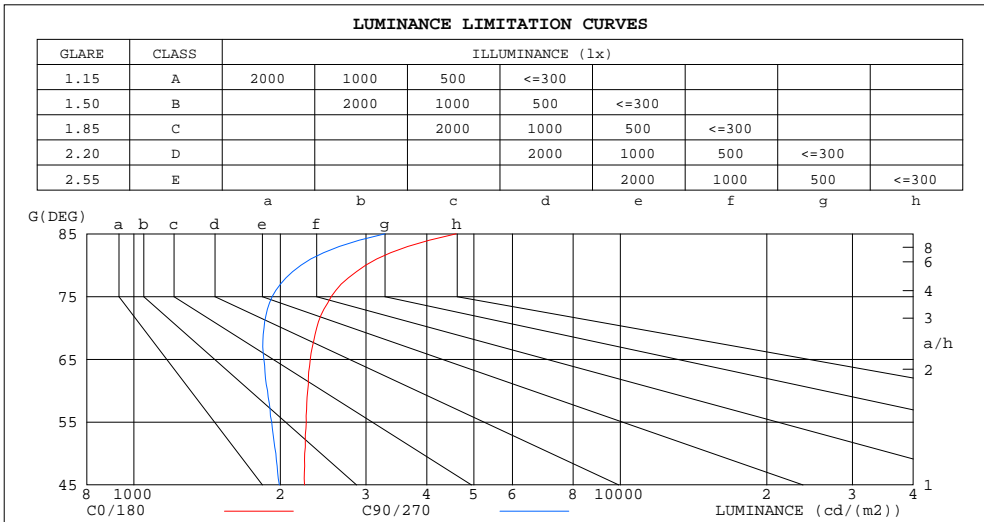
%lum = 66.6%  
%lamp = 66.6%

C Range: 0 - 360DEG  
C Interval: 22.5DEG  
Test Speed: HIGH  
Temperature:25.4DEG  
Operators:Carl  
Test Date:2022-06-04

γ Range: 0 - 180DEG  
γ Interval: 1.0DEG  
Test System:EVERFINE GO-R5000\_V2 SYSTEM V2.0.351  
Humidity:37%  
Test Distance:2.526m [K=1.0000]  
Remarks:

LUMINANCE LIMITATION CURVES

Test:U:120.0V I:0.2242A P:26.38W PF:0.9801 Lamp Flux:1954.09x1 lm		
NAME: ASD-LFMDR-MV-16D24CC-EM-NK 5000K	TYPE:N/A	WEIGHT:N/A
SPEC.:N/A	DIM.: N/A	SERIAL No.:N/A
MFR.: ASD Lighting corp	SUR.:N/A	Shielding Angle:N/A



LUMINANCE cd/(m2)		
G (DEG)	C0/180	C90/270
85	4597	3280
80	2995	2205
75	2544	1924
70	2376	1851
65	2305	1851
60	2277	1883
55	2262	1920
50	2245	1958
45	2242	1992

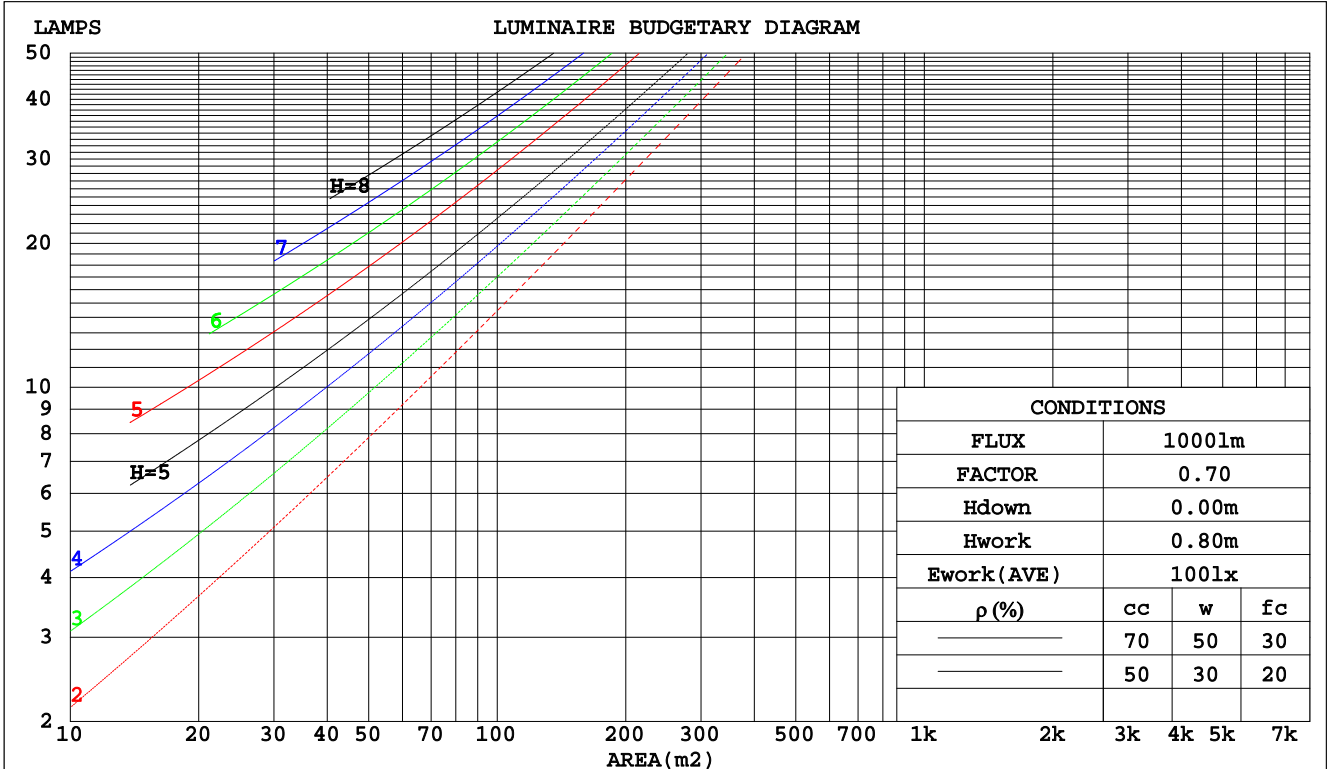
C Range: 0 - 360DEG  
 C Interval: 22.5DEG  
 Test Speed: HIGH  
 Temperature: 25.4DEG  
 Operators: Carl  
 Test Date: 2022-06-04

γ Range: 0 - 180DEG  
 γ Interval: 1.0DEG  
 Test System: EVERFINE GO-R5000\_V2 SYSTEM V2.0.351  
 Humidity: 37%  
 Test Distance: 2.526m [K=1.0000]  
 Remarks:

CU AND LUMINAIRE BUDGETARY ESTIMATE DIAGRAM

Test:U:120.0V I:0.2242A P:26.38W PF:0.9801 Lamp Flux:1954.09x1 lm		
NAME: ASD-LFMDR-MV-16D24CC-EM-NK 5000K	TYPE:N/A	WEIGHT:N/A
SPEC.:N/A	DIM.: N/A	SERIAL No.:N/A
MFR.: ASD Lighting corp	SUR.:N/A	Shielding Angle:N/A

pcc	80%			70%			50%			30%			10%			0
	50%	30%	10%	50%	30%	10%	50%	30%	10%	50%	30%	10%	50%	30%	10%	0
pw																0
pfc	20%			20%			20%			20%			20%			0
RCR	RCR:Room Cavity Ratio      Coefficients of Utilization(CU)															
0.0	1.17	1.17	1.17	1.13	1.13	1.13	1.06	1.06	1.06	1.00	1.00	1.00	.94	.94	.94	.92
1.0	.00	.95	.90	.97	.92	.88	.91	.87	.84	.85	.82	.80	.80	.78	.76	.73
2.0	.86	.79	.72	.83	.77	.71	.78	.73	.68	.74	.69	.65	.70	.66	.62	.60
3.0	.75	.66	.60	.73	.65	.59	.69	.62	.56	.65	.59	.54	.61	.56	.52	.50
4.0	.66	.57	.50	.64	.56	.49	.61	.53	.48	.57	.51	.46	.54	.49	.45	.42
5.0	.59	.50	.43	.57	.49	.42	.54	.47	.41	.51	.45	.40	.49	.43	.39	.36
6.0	.53	.44	.37	.52	.43	.37	.49	.41	.36	.46	.40	.35	.44	.38	.34	.31
7.0	.48	.39	.33	.47	.38	.32	.44	.37	.31	.42	.36	.31	.40	.34	.30	.28
8.0	.44	.35	.29	.43	.34	.29	.41	.33	.28	.39	.32	.27	.37	.31	.27	.25
9.0	.40	.32	.26	.39	.31	.26	.37	.30	.25	.36	.29	.25	.34	.28	.24	.22
10.0	.37	.29	.24	.36	.28	.23	.34	.28	.23	.33	.27	.22	.32	.26	.22	.20



C Range: 0 - 360DEG  
 C Interval: 22.5DEG  
 Test Speed: HIGH  
 Temperature:25.4DEG  
 Operators:Carl  
 Test Date:2022-06-04

γ Range: 0 - 180DEG  
 γ Interval: 1.0DEG  
 Test System:EVERFINE GO-R5000\_V2 SYSTEM V2.0.351  
 Humidity:37%  
 Test Distance:2.526m [K=1.0000]  
 Remarks:

WEC AND CCEC

Test:U:120.0V I:0.2242A P:26.38W PF:0.9801 Lamp Flux:1954.09x1 lm		
NAME: ASD-LFMDR-MV-16D24CC-EM-NK 5000K	TYPE:N/A	WEIGHT:N/A
SPEC.:N/A	DIM.: N/A	SERIAL No.:N/A
MFR.: ASD Lighting corp	SUR.:N/A	Shielding Angle:N/A

ρcc	80%			70%			50%			30%			10%			0
ρw	50%	30%	10%	50%	30%	10%	50%	30%	10%	50%	30%	10%	50%	30%	10%	0
ρfc	20%			20%			20%			20%			20%			0
RCR	RCR:Room Cavity Ratio						Wall Exitance Coefficients(WEC)									
0.0																
1.0	.351	.200	.063	.341	.195	.062	.323	.185	.059	.306	.177	.057	.291	.168	.054	
2.0	.314	.172	.053	.305	.168	.052	.289	.161	.050	.274	.154	.048	.260	.147	.046	
3.0	.284	.151	.045	.276	.148	.045	.261	.142	.043	.248	.136	.042	.235	.130	.040	
4.0	.258	.134	.039	.251	.132	.039	.238	.126	.038	.226	.121	.037	.215	.117	.036	
5.0	.237	.121	.035	.230	.118	.034	.219	.114	.034	.208	.110	.033	.197	.105	.032	
6.0	.218	.109	.031	.212	.107	.031	.202	.103	.030	.192	.100	.029	.182	.096	.029	
7.0	.202	.100	.028	.197	.098	.028	.187	.095	.027	.178	.091	.027	.170	.088	.026	
8.0	.188	.092	.026	.183	.090	.026	.175	.087	.025	.166	.084	.024	.158	.081	.024	
9.0	.176	.085	.024	.171	.084	.023	.163	.081	.023	.156	.078	.022	.149	.075	.022	
10.0	.165	.079	.022	.161	.078	.022	.154	.075	.021	.147	.073	.021	.140	.070	.020	

ρcc	80%			70%			50%			30%			10%			0
ρw	50%	30%	10%	50%	30%	10%	50%	30%	10%	50%	30%	10%	50%	30%	10%	0
ρfc	20%			20%			20%			20%			20%			0
RCR	RCR:Room Cavity Ratio						Ceiling Cavity Exitance Coefficients(CCEC)									
0.0	.255	.255	.255	.218	.218	.218	.149	.149	.149	.085	.085	.085	.027	.027	.027	
1.0	.248	.221	.196	.212	.189	.169	.145	.130	.117	.084	.075	.068	.027	.024	.022	
2.0	.240	.197	.161	.206	.170	.139	.141	.117	.097	.081	.068	.057	.026	.022	.018	
3.0	.233	.180	.138	.200	.155	.120	.137	.108	.084	.079	.063	.049	.025	.020	.016	
4.0	.225	.167	.123	.193	.144	.107	.133	.101	.075	.077	.059	.044	.025	.019	.015	
5.0	.217	.157	.112	.187	.136	.098	.129	.095	.069	.075	.056	.041	.024	.018	.013	
6.0	.210	.149	.105	.181	.129	.091	.125	.090	.065	.072	.053	.038	.023	.017	.013	
7.0	.203	.142	.099	.175	.123	.086	.121	.086	.061	.070	.051	.036	.023	.017	.012	
8.0	.197	.136	.095	.169	.118	.083	.117	.083	.059	.068	.049	.035	.022	.016	.012	
9.0	.190	.131	.092	.164	.114	.080	.114	.080	.057	.066	.047	.034	.021	.016	.011	
10.0	.185	.127	.089	.159	.110	.078	.110	.078	.055	.064	.046	.033	.021	.015	.011	

C Range: 0 - 360DEG  
 C Interval: 22.5DEG  
 Test Speed: HIGH  
 Temperature:25.4DEG  
 Operators:Carl  
 Test Date:2022-06-04

γ Range: 0 - 180DEG  
 γ Interval: 1.0DEG  
 Test System:EVERFINE GO-R5000\_V2 SYSTEM V2.0.351  
 Humidity:37%  
 Test Distance:2.526m [K=1.0000]  
 Remarks:

UGR(Unified Glare Rating) Table

Test:U:120.0V I:0.2242A P:26.38W PF:0.9801 Lamp Flux:1954.09x1 lm										
NAME: ASD-LFMDR-MV-16D24CC-EM-NK 5000K					TYPE:N/A			WEIGHT:N/A		
SPEC.:N/A					DIM.: N/A			SERIAL No.:N/A		
MFR.: ASD Lighting corp					SUR.:N/A			Shielding Angle:N/A		
ceiling/cavity	0.7	0.7	0.5	0.5	0.3	0.7	0.7	0.5	0.5	0.3
walls	0.5	0.3	0.5	0.3	0.3	0.5	0.3	0.5	0.3	0.3
working plane	0.2	0.2	0.2	0.2	0.2	0.2	0.2	0.2	0.2	0.2
Room dimensions	Viewed crosswise					Viewed endwise				
x = 2H y = 2H	15.2	16.6	15.6	17.0	17.4	14.5	15.9	14.8	16.3	16.6
3H	17.1	18.4	17.5	18.8	19.2	16.1	17.4	16.5	17.8	18.2
4H	18.0	19.3	18.4	19.7	20.1	16.9	18.2	17.3	18.6	19.0
6H	19.0	20.2	19.4	20.6	21.0	17.7	18.9	18.1	19.3	19.7
8H	19.4	20.6	19.9	21.0	21.5	18.1	19.2	18.5	19.6	20.1
12H	20.0	21.1	20.5	21.6	22.0	18.5	19.6	19.0	20.1	20.5
4H 2H	15.7	17.0	16.2	17.4	17.8	15.2	16.5	15.6	16.9	17.3
3H	17.8	18.9	18.3	19.4	19.9	17.0	18.1	17.5	18.6	19.1
4H	18.9	19.9	19.4	20.4	20.9	18.0	19.0	18.5	19.5	20.0
6H	20.0	21.0	20.6	21.5	22.0	18.9	19.8	19.4	20.3	20.9
8H	20.6	21.5	21.2	22.0	22.6	19.4	20.3	19.9	20.8	21.3
12H	21.3	22.1	21.9	22.6	23.2	19.9	20.7	20.5	21.3	21.8
8H 4H	19.2	20.1	19.8	20.6	21.2	18.4	19.3	19.0	19.8	20.4
6H	20.6	21.3	21.2	21.9	22.5	19.6	20.3	20.2	20.9	21.5
8H	21.4	22.0	22.0	22.6	23.2	20.3	20.9	20.8	21.5	22.1
12H	22.3	22.8	22.9	23.4	24.1	21.0	21.6	21.6	22.1	22.8
12H 4H	19.3	20.1	19.8	20.6	21.2	18.5	19.3	19.1	19.8	20.4
6H	20.7	21.4	21.3	21.9	22.6	19.8	20.4	20.4	21.0	21.6
8H	21.6	22.1	22.2	22.7	23.4	20.5	21.1	21.2	21.7	22.4
Variations with the observer position at spacings:										
S = 1.0H	+ 0.1 / - 0.1					+ 0.1 / - 0.2				
1.5H	+ 0.2 / - 0.2					+ 0.2 / - 0.3				
2.0H	+ 0.2 / - 0.3					+ 0.1 / - 0.4				

CIE Pub.117 Corrected 1954 lm Total Lamp Luminous Flux.(8log(F/F0) = 2.3)

C Range: 0 - 360DEG  
 C Interval: 22.5DEG  
 Test Speed: HIGH  
 Temperature:25.4DEG  
 Operators:Carl  
 Test Date:2022-06-04

γ Range: 0 - 180DEG  
 γ Interval: 1.0DEG  
 Test System:EVERFINE GO-R5000\_V2 SYSTEM V2.0.351  
 Humidity:37%  
 Test Distance:2.526m [K=1.0000]  
 Remarks:

UTILIZATION FACTORS TABLE

Test:U:120.0V I:0.2242A P:26.38W PF:0.9801 Lamp Flux:1954.09x1 lm		
NAME: ASD-LFMDR-MV-16D24CC-EM-NK 5000K	TYPE:N/A	WEIGHT:N/A
SPEC.:N/A	DIM.: N/A	SERIAL No.:N/A
MFR.: ASD Lighting corp	SUR.:N/A	Shielding Angle:N/A

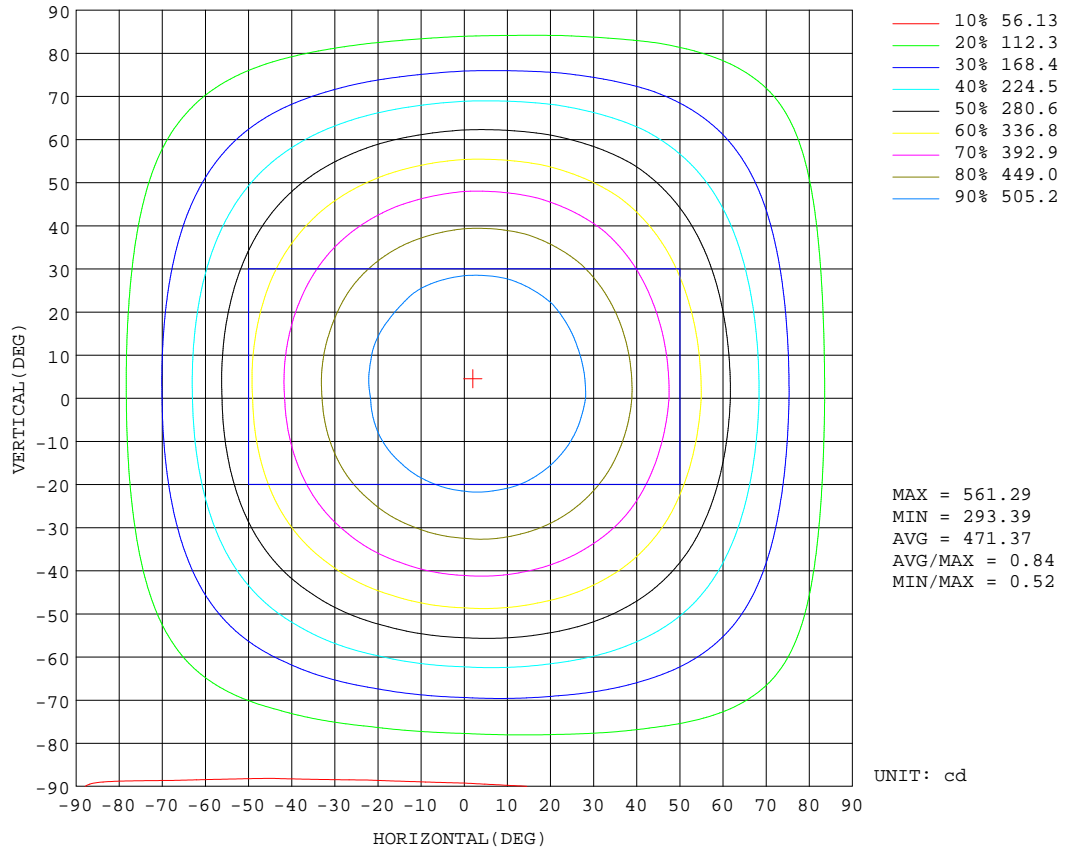
REFLECTANCE										
Ceiling	0.8	0.8	0.8	0.7	0.7	0.7	0.5	0.5	0.5	0
Walls	0.7	0.5	0.3	0.7	0.5	0.3	0.7	0.5	0.3	0
Working plane	0.2	0.2	0.2	0.2	0.2	0.2	0.2	0.2	0.2	0
ROOM INDEX	UTILIZATION FACTORS(PERCENT) $k(RI) \times RCR = 5$									
k = 0.60	53	41	34	52	40	34	50	40	33	27
0.80	62	50	42	61	50	42	59	48	42	34
1.00	71	59	51	69	58	50	66	59	49	41
1.25	77	66	58	76	65	57	72	63	56	48
1.50	83	71	64	80	70	63	76	68	61	52
2.00	90	80	72	87	78	71	83	75	69	59
2.50	94	85	78	91	83	76	86	79	74	63
3.00	97	89	83	94	87	81	89	83	78	67
4.00	102	95	89	99	92	87	93	88	84	72
5.00	104	98	93	101	96	91	95	91	87	75
ROOM INDEX	UF(total)									Direct
According to DIN EN 13032-2 2004			Suspended				SHRNOM = 1.25			

C Range: 0 - 360DEG  
 C Interval: 22.5DEG  
 Test Speed: HIGH  
 Temperature:25.4DEG  
 Operators:Carl  
 Test Date:2022-06-04

$\gamma$  Range: 0 - 180DEG  
 $\gamma$  Interval: 1.0DEG  
 Test System:EVERFINE GO-R5000\_V2 SYSTEM V2.0.351  
 Humidity:37%  
 Test Distance:2.526m [K=1.0000]  
 Remarks:

ISOCANDELA DIAGRAM

Test:U:120.0V I:0.2242A P:26.38W PF:0.9801 Lamp Flux:1954.09x1 lm		
NAME: ASD-LFMDR-MV-16D24CC-EM-NK 5000K	TYPE:N/A	WEIGHT:N/A
SPEC.:N/A	DIM.: N/A	SERIAL No.:N/A
MFR.: ASD Lighting corp	SUR.:N/A	Shielding Angle:N/A



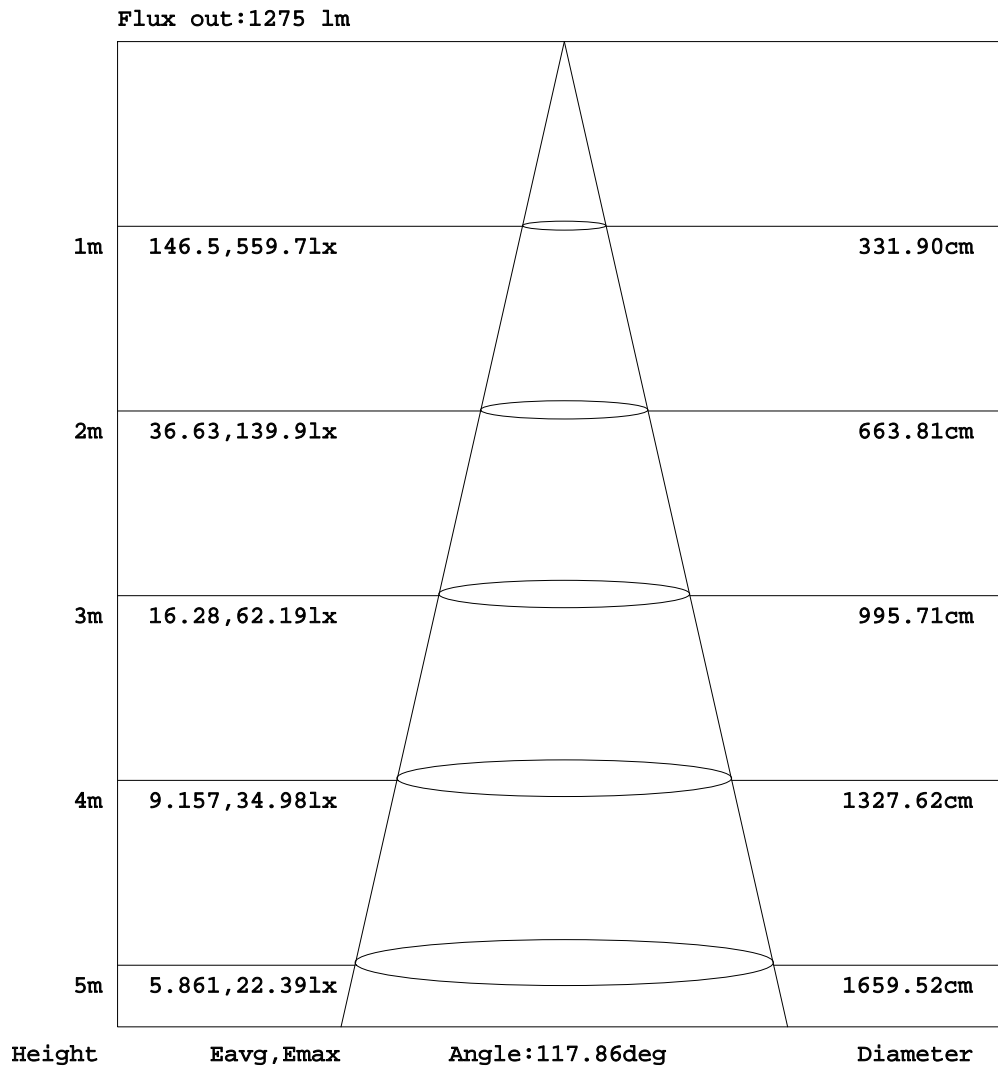
C Range: 0 - 360DEG  
 C Interval: 22.5DEG  
 Test Speed: HIGH  
 Temperature:25.4DEG  
 Operators:Carl  
 Test Date:2022-06-04

γ Range: 0 - 180DEG  
 γ Interval: 1.0DEG  
 Test System:EVERFINE GO-R5000\_V2 SYSTEM V2.0.351  
 Humidity:37%  
 Test Distance:2.526m [K=1.0000]  
 Remarks:



AAI Figure

Test:U:120.0V I:0.2242A P:26.38W PF:0.9801 Lamp Flux:1954.09x1 lm		
NAME: ASD-LFMDR-MV-16D24CC-EM-NK 5000K	TYPE:N/A	WEIGHT:N/A
SPEC.:N/A	DIM.: N/A	SERIAL No.:N/A
MFR.: ASD Lighting corp	SUR.:N/A	Shielding Angle:N/A



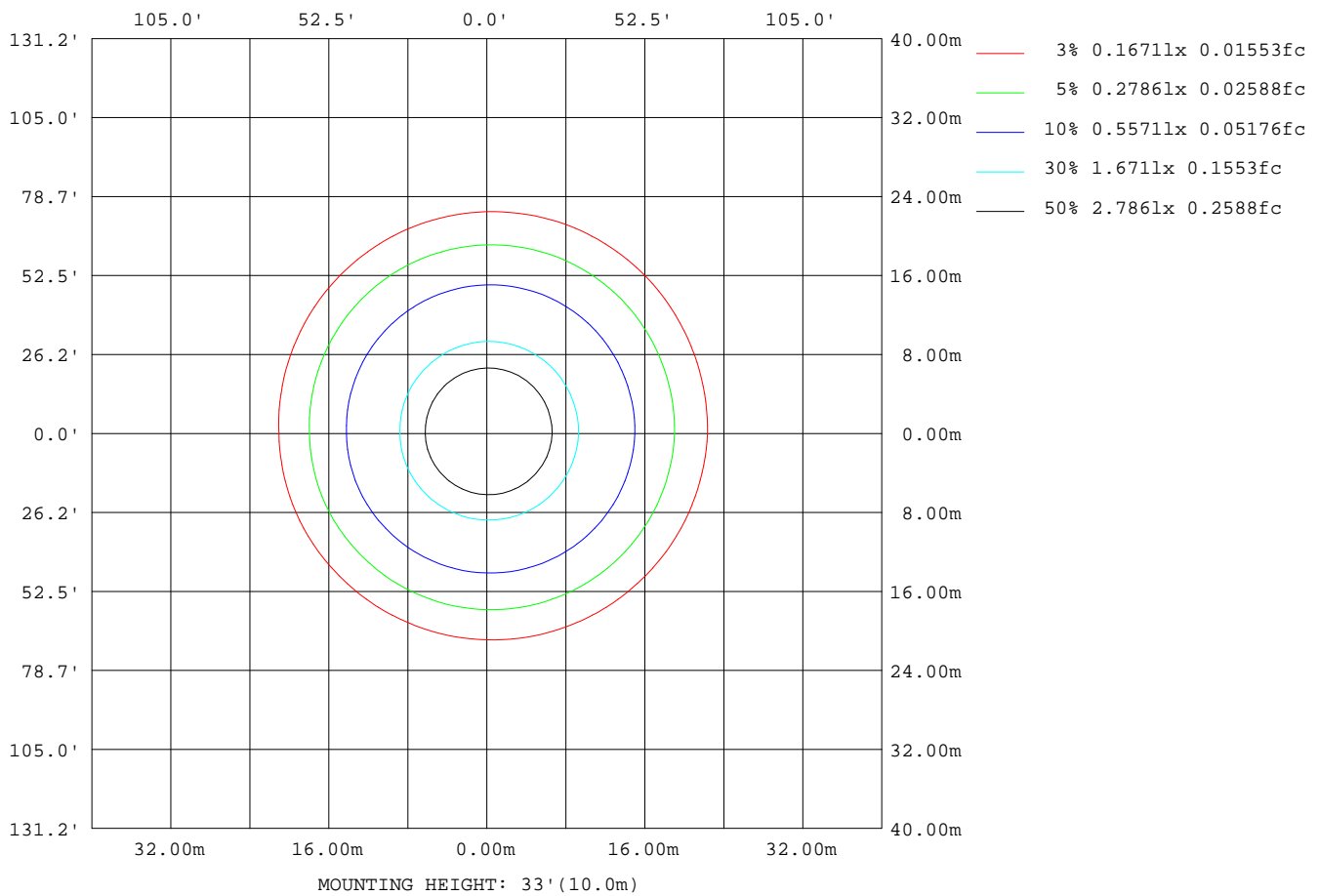
Note: The Curves indicate the illuminated area and the average illumination when the luminaire is at different distance.

C Range: 0 - 360DEG  
 C Interval: 22.5DEG  
 Test Speed: HIGH  
 Temperature: 25.4DEG  
 Operators: Carl  
 Test Date: 2022-06-04

γ Range: 0 - 180DEG  
 γ Interval: 1.0DEG  
 Test System: EVERFINE GO-R5000\_V2 SYSTEM V2.0.351  
 Humidity: 37%  
 Test Distance: 2.526m [K=1.0000]  
 Remarks:

**ISOLUX DIAGRAM**

Test:U:120.0V I:0.2242A P:26.38W PF:0.9801 Lamp Flux:1954.09x1 lm		
NAME: ASD-LFMDR-MV-16D24CC-EM-NK 5000K	TYPE:N/A	WEIGHT:N/A
SPEC.:N/A	DIM.: N/A	SERIAL No.:N/A
MFR.: ASD Lighting corp	SUR.:N/A	Shielding Angle:N/A



C Range: 0 - 360DEG  
 C Interval: 22.5DEG  
 Test Speed: HIGH  
 Temperature:25.4DEG  
 Operators:Carl  
 Test Date:2022-06-04

$\gamma$  Range: 0 - 180DEG  
 $\gamma$  Interval: 1.0DEG  
 Test System:EVERFINE GO-R5000\_V2 SYSTEM V2.0.351  
 Humidity:37%  
 Test Distance:2.526m [K=1.0000]  
 Remarks:

**LED Avg.L Report**

Test:U:120.0V I:0.2242A P:26.38W PF:0.9801 Lamp Flux:1954.09x1 lm		
NAME: ASD-LFMDR-MV-16D24CC-EM-NK 5000K	TYPE:N/A	WEIGHT:N/A
SPEC.:N/A	DIM.: N/A	SERIAL No.:N/A
MFR.: ASD Lighting corp	SUR.:N/A	Shielding Angle:N/A

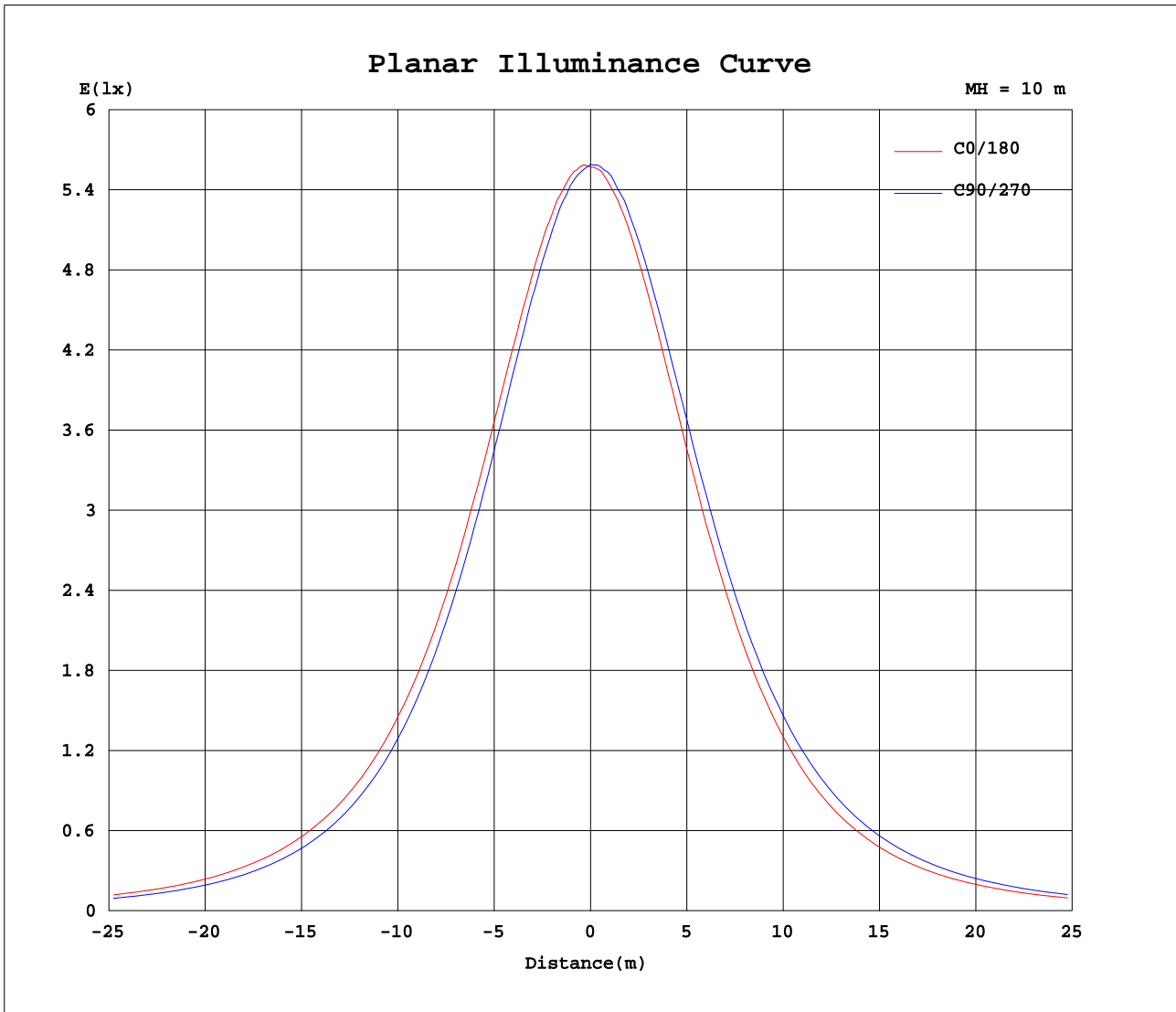
AvgL	cd/m2
L_0~180(65)av	2105
L_0~180(75)av	2267
L_0~180(85)av	4021
L_90~270(65)av	2096
L_90~270(75)av	2260
L_90~270(85)av	3978
L_45(65)av	2099
L_45(75)av	2266
L_45(85)av	3986

Standard: GB/T 29293-2012

C Range: 0 - 360DEG  
 C Interval: 22.5DEG  
 Test Speed: HIGH  
 Temperature:25.4DEG  
 Operators:Carl  
 Test Date:2022-06-04

γ Range: 0 - 180DEG  
 γ Interval: 1.0DEG  
 Test System:EVERFINE GO-R5000\_V2 SYSTEM V2.0.351  
 Humidity:37%  
 Test Distance:2.526m [K=1.0000]  
 Remarks:

Planar Illuminance Curve



C Range: 0 - 360DEG  
 C Interval: 22.5DEG  
 Test Speed: HIGH  
 Temperature: 25.4DEG  
 Operators: Carl  
 Test Date: 2022-06-04

$\gamma$  Range: 0 - 180DEG  
 $\gamma$  Interval: 1.0DEG  
 Test System: EVERFINE GO-R5000\_V2 SYSTEM V2.0.351  
 Humidity: 37%  
 Test Distance: 2.526m [K=1.0000]  
 Remarks:

LUMINOUS DISTRIBUTION INTENSITY DATA

Test:U:120.0V I:0.2242A P:26.38W PF:0.9801 Lamp Flux:1954.09x1 lm		
NAME: ASD-LFMDR-MV-16D24CC-EM-NK 5000K	TYPE:N/A	WEIGHT:N/A
SPEC.:N/A	DIM.: N/A	SERIAL No.:N/A
MFR.: ASD Lighting corp	SUR.:N/A	Shielding Angle:N/A

Table--1

UNIT: cd

C(DEG)\ γ (DEG)	0	22.5	45	67.5	90	112.5	135	157.5	180	202.5	225	247.5	270	292.5	315	337.5			
0	558	558	558	558	558	558	558	558	558	558	558	558	558	558	558	558			
5	561	559	556	554	552	551	552	553	554	555	556	557	559	560	559	561			
10	558	552	549	545	542	540	541	543	545	547	550	553	556	556	557	556			
15	549	543	538	532	529	526	527	529	531	535	539	544	547	549	551	549			
20	536	530	523	516	511	508	509	511	513	520	525	530	535	537	538	537			
25	519	511	503	495	488	486	486	490	492	500	506	513	518	522	522	520			
30	498	489	478	470	462	458	459	464	466	473	483	491	498	501	503	500			
35	471	462	451	441	433	428	429	433	437	445	456	465	473	477	478	476			
40	443	432	420	409	400	395	396	401	405	414	426	436	444	449	451	447			
45	412	399	385	374	364	359	360	365	370	380	392	404	413	418	419	415			
50	375	361	347	335	326	320	321	327	331	342	355	369	377	383	384	379			
55	337	322	308	295	285	280	281	287	291	303	317	329	339	346	346	341			
60	296	281	266	253	244	238	239	245	250	262	276	289	299	304	306	300			
65	253	239	224	212	202	198	198	204	208	220	234	247	257	262	263	258			
70	211	197	183	172	164	159	160	165	169	180	193	205	214	220	221	216			
75	171	158	146	136	129	125	125	130	133	144	156	166	174	180	180	175			
80	135	124	114	105	99.1	96.1	96.3	100	103	111	121	130	138	142	143	138			
85	104	94.8	86.1	79.2	74.0	71.6	71.7	75.1	77.6	84.5	92.5	99.8	106	109	110	106			
90	77.8	70.5	64.0	57.8	53.0	51.0	51.3	54.1	56.5	62.3	68.8	74.6	79.3	82.2	82.6	79.7			
95	56.8	50.7	45.4	41.6	38.4	37.5	37.3	39.0	40.5	44.7	49.5	54.0	57.5	59.8	60.0	57.9			
100	40.7	37.1	34.1	32.4	30.4	30.3	30.2	30.7	31.3	33.1	36.1	38.7	41.0	42.6	43.1	41.6			
105	32.1	30.3	29.6	30.1	29.9	30.0	29.5	29.0	28.4	27.8	28.8	30.1	31.1	32.3	32.6	32.0			
110	30.2	29.7	29.7	30.2	29.8	29.8	29.1	28.7	28.4	27.9	28.0	28.1	28.3	28.9	29.6	29.9			
115	30.0	29.4	29.1	29.2	28.9	28.7	28.1	27.8	27.7	27.5	27.7	27.7	28.1	28.8	29.6	29.9			
120	29.2	28.4	27.7	27.5	26.6	26.4	26.0	26.0	26.2	26.3	26.7	26.8	27.2	28.0	28.9	29.1			
125	27.5	26.3	25.3	24.9	24.0	23.7	23.5	23.5	23.5	24.0	24.7	25.1	25.7	26.5	27.3	27.3			
130	24.7	23.4	22.4	21.7	21.0	20.7	20.5	20.9	20.6	21.2	21.8	22.4	23.1	24.1	24.5	24.6			
135	21.6	20.2	19.3	18.6	17.6	17.1	17.4	17.8	17.4	17.9	18.6	19.3	20.0	21.0	21.5	21.6			
140	18.4	16.9	15.7	15.0	14.2	13.7	14.3	14.4	14.1	14.6	15.5	15.8	16.7	17.7	18.6	18.5			
145	14.9	13.7	12.6	11.5	10.8	10.4	10.6	11.4	10.7	11.5	11.9	12.2	13.1	14.2	15.2	14.9			
150	11.4	10.3	9.00	8.45	7.69	7.77	8.35	8.27	8.09	8.24	8.77	9.09	10.00	10.6	11.4	11.6			
155	8.58	7.68	6.71	6.11	6.17	5.88	6.01	6.23	5.53	5.99	6.31	6.59	7.66	7.05	8.03	8.33			
160	7.34	6.15	4.80	4.84	5.49	4.45	4.13	4.30	4.18	4.02	4.64	4.81	4.90	5.39	5.87	6.38			
165	5.25	5.00	3.99	3.69	3.77	3.56	3.26	3.58	3.26	3.37	3.11	3.30	4.33	3.90	3.90	4.61			
170	4.10	4.01	2.97	2.64	3.08	3.18	2.08	2.64	2.18	2.19	2.30	2.19	2.70	2.98	3.09	3.59			
175	3.35	2.20	1.78	2.02	1.73	1.73	1.72	2.27	1.52	1.63	1.81	1.60	1.69	2.27	2.33	2.30			
180	0.52	0.89	0.93	0.72	0.50	0.91	0.92	0.75	0.94	0.94	0.94	0.93	0.93	0.93	0.92	0.93			

C Range: 0 - 360DEG  
 C Interval: 22.5DEG  
 Test Speed: HIGH  
 Temperature:25.4DEG  
 Operators:Carl  
 Test Date:2022-06-04

γ Range: 0 - 180DEG  
 γ Interval: 1.0DEG  
 Test System:EVERFINE GO-R5000\_V2 SYSTEM V2.0.351  
 Humidity:37%  
 Test Distance:2.526m [K=1.0000]  
 Remarks: