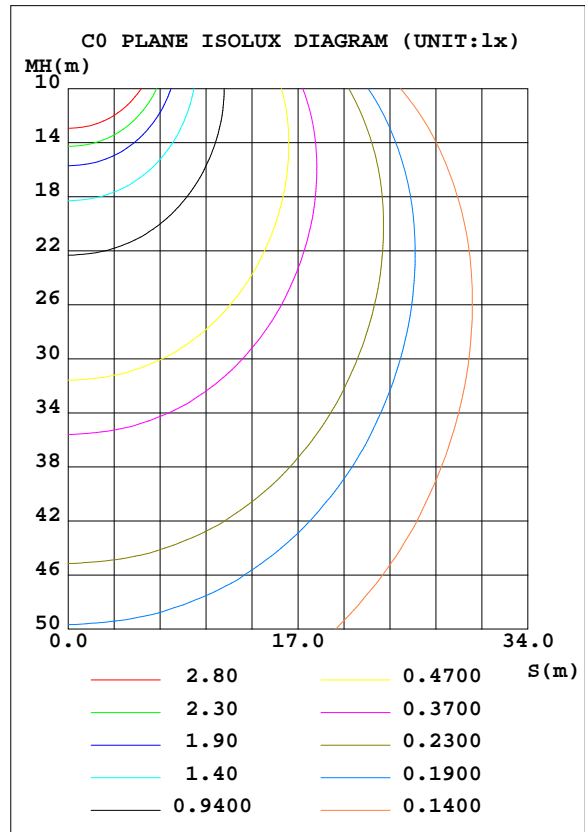
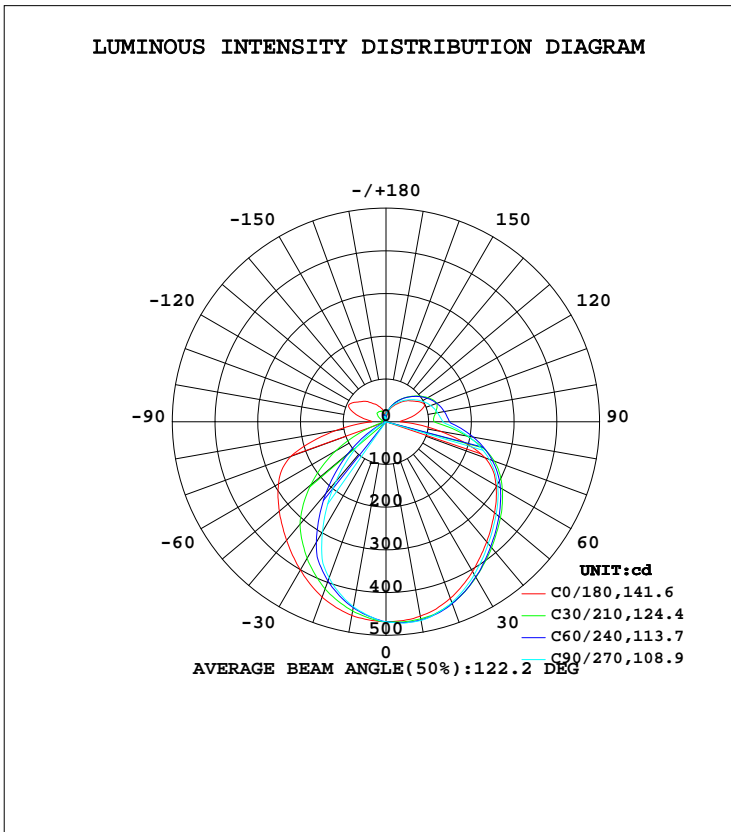


LUMINAIRE PHOTOMETRIC TEST REPORT

Test:U:120.00V I:0.2463A P:27.620W PF:0.9344 Freq:60.00Hz Lamp Flux:1777.85x1 lm		
NAME: LED Wall Pack	TYPE:LED	WEIGHT:
SPEC.:LVF25M-5D28AC-BK_5000K	DIM.:	SERIAL No.:
MFR.: ASD Lighting Corp	SUR.:	Shielding Angle:

DATA OF LAMP		PHOTOMETRIC DATA			
MODEL	LVF25M-5D28AC-BK	Imax(cd)	473.3	S/MH(C0/180)	1.28
NOMINAL POWER(W)	28	LOR(%)	100.0	S/MH(C90/270)	1.02
RATED VOLTAGE(V)	120	TOTAL FLUX(lm)	1777.9	η UP, DN(C0-180)	16.5,52.9
NOMINAL FLUX(lm)	1777.85	CIE CLASS	SEMI-D.	η UP, DN(C180-360)	3.2,27.4
LAMPS INSIDE	1	η up(%)	19.7	CIBSE SHR NOM	1.25
TEST VOLTAGE(V)	120	η down(%)	80.3	CIBSE SHR MAX	1.35



C Range: 0 - 360DEG
 C Interval: 15.0DEG
 Test Speed: HIGH
 Temperature: 25.0DEG
 Operators: Alan Wang
 Test Date: 27 August 2023

γ Range: 0 - 180DEG
 γ Interval: 1.0DEG
 Test System: EVERFINE GO-R5000_V2 SYSTEM V2.00.416
 Humidity: 42.3%
 Test Distance: 2.500m [K=1.0391]
 Remarks:

ZONAL FLUX DIAGRAM

ZONAL FLUX DIAGRAM:

γ	C0	C45	C90	C135	C180	C225	C270	C315	γ	Φ zone	Φ total	%lum,lamp
10	462.3	470.6	472.1	469.5	460.5	445.1	439.8	447.3	0- 10	44.20	44.20	2.49,2.49
20	439.9	454.0	450.7	452.5	437.0	405.9	389.0	411.2	10- 20	125.9	170.1	9.57,9.57
30	404.9	422.0	413.4	419.9	401.0	351.9	297.3	357.4	20- 30	188.2	358.3	20.2,20.2
40	366.7	384.0	372.5	382.9	362.0	262.4	182.9	271.8	30- 40	221.6	579.8	32.6,32.6
50	331.6	347.4	337.0	345.5	326.0	161.9	83.77	172.1	40- 50	227.2	807.1	45.4,45.4
60	297.2	310.2	301.9	307.6	290.7	66.04	15.36	73.96	50- 60	212.0	1019	57.3,57.3
70	246.3	265.7	257.7	262.7	236.5	3.707	0.2713	5.530	60- 70	182.0	1201	67.6,67.6
80	129.9	206.4	195.5	203.3	119.8	1.454	0.3187	2.014	70- 80	138.2	1339	75.3,75.3
90	33.67	144.6	133.7	141.6	32.98	1.465	0.3567	2.058	80- 90	87.93	1427	80.3,80.3
100	56.99	137.6	122.6	135.7	58.45	1.432	0.3991	2.028	90-100	67.64	1495	84.1,84.1
110	91.38	129.7	111.5	128.2	90.27	1.957	0.4016	2.574	100-110	69.82	1565	88,88
120	92.87	113.9	97.19	112.7	89.76	5.714	1.697	7.130	110-120	66.58	1631	91.8,91.8
130	76.30	95.74	80.99	95.21	73.96	15.59	4.198	17.28	120-130	54.21	1685	94.8,94.8
140	62.20	76.70	65.20	76.71	59.25	17.61	6.324	19.48	130-140	40.71	1726	97.1,97.1
150	47.32	58.42	50.82	58.68	46.78	19.87	8.551	21.29	140-150	27.22	1753	98.6,98.6
160	35.41	41.29	37.67	41.60	34.56	20.85	11.55	19.05	150-160	15.94	1769	99.5,99.5
170	16.70	26.00	25.96	25.95	16.69	10.87	13.29	14.34	160-170	7.186	1776	99.9,99.9
180	12.85	16.16	16.85	8.101	12.03	12.99	10.66	9.623	170-180	1.379	1778	100,100
DEG	LUMINOUS INTENSITY:cd									UNIT:lm		

Conical surface Flux(90deg): 694.23 lm

%lum = 39.0%

%lamp = 39.0%

Conical surface Flux(120deg): 1019.1 lm

%lum = 57.3%

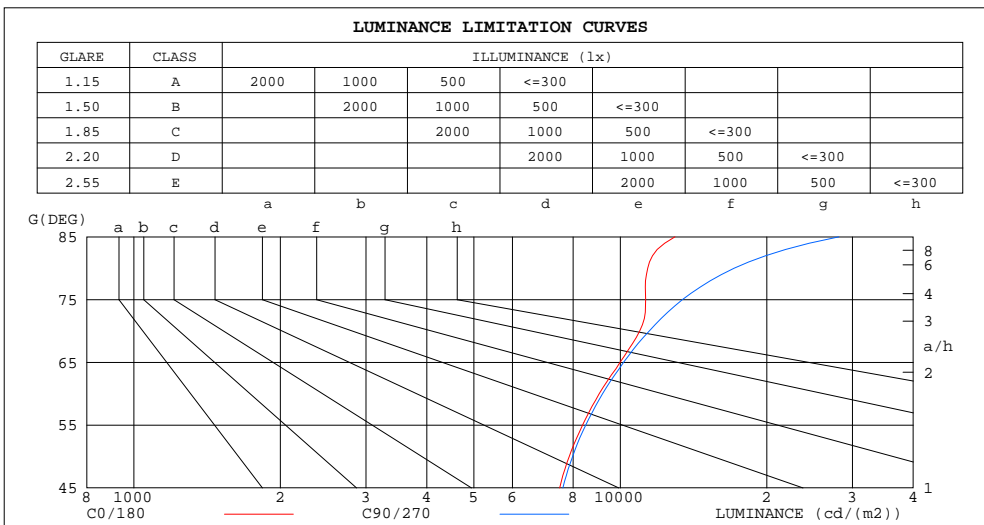
%lamp = 57.3%

C Range: 0 - 360DEG
 C Interval: 15.0DEG
 Test Speed: HIGH
 Temperature: 25.0DEG
 Operators: Alan Wang
 Test Date: 27 August 2023

γ Range: 0 - 180DEG
 γ Interval: 1.0DEG
 Test System: EVERFINE GO-R5000_V2 SYSTEM V2.00.416
 Humidity: 42.3%
 Test Distance: 2.500m [K=1.0391]
 Remarks:

LUMINANCE LIMITATION CURVES

Test:U:120.00V I:0.2463A P:27.620W PF:0.9344 Freq:60.00Hz Lamp Flux:1777.85x1 lm		
NAME: LED Wall Pack	TYPE:LED	WEIGHT:
SPEC.:LVF25M-5D28AC-BK_5000K	DIM.:	SERIAL No.:
MFR.: ASD Lighting Corp	SUR.:	Shielding Angle:



LUMINANCE cd/(m2)		
G(DEG)	C0/180	C90/270
85	12952	28137
80	11382	17139
75	11275	13422
70	10963	11467
65	9989	10156
60	9047	9191
55	8363	8488
50	7851	7981
45	7507	7619

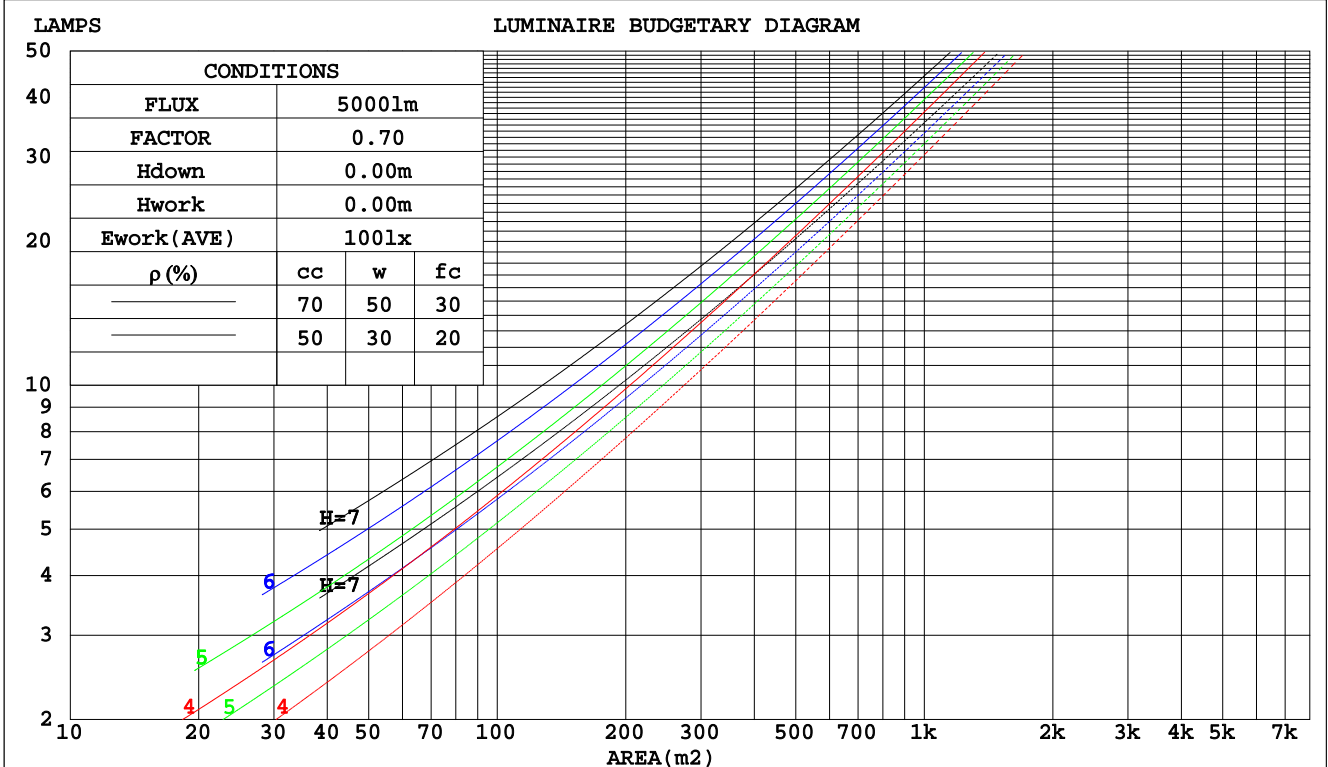
C Range: 0 - 360DEG
 C Interval: 15.0DEG
 Test Speed: HIGH
 Temperature: 25.0DEG
 Operators: Alan Wang
 Test Date: 27 August 2023

γ Range: 0 - 180DEG
 γ Interval: 1.0DEG
 Test System: EVERFINE GO-R5000_V2 SYSTEM V2.00.416
 Humidity: 42.3%
 Test Distance: 2.500m [K=1.0391]
 Remarks:

CU AND LUMINAIRE BUDGETARY ESTIMATE DIAGRAM

Test:U:120.00V I:0.2463A P:27.620W PF:0.9344 Freq:60.00Hz Lamp Flux:1777.85x1 lm		
NAME: LED Wall Pack	TYPE:LED	WEIGHT:
SPEC.:LVF25M-5D28AC-BK_5000K	DIM.:	SERIAL No.:
MFR.: ASD Lighting Corp	SUR.:	Shielding Angle:

pcc	80%			70%			50%			30%			10%			0		
	50%	30%	10%	50%	30%	10%	50%	30%	10%	50%	30%	10%	50%	30%	10%	0		
pw	0																	
pfc	20%			20%			20%			20%			20%			0		
RCR	RCR:Room Cavity Ratio Coefficients of Utilization(CU)																	
0.0	1.14	1.14	1.14	1.09	1.09	1.09	1.00	1.00	1.00	.92	.92	.92	.84	.84	.84	.80		
1.0	.97	.92	.88	.93	.89	.85	.85	.82	.79	.78	.75	.73	.71	.69	.67	.64		
2.0	.84	.77	.71	.80	.74	.68	.74	.68	.64	.67	.63	.59	.62	.58	.55	.52		
3.0	.73	.65	.58	.70	.63	.56	.64	.58	.53	.59	.54	.50	.54	.50	.46	.43		
4.0	.65	.56	.49	.62	.54	.48	.57	.50	.45	.52	.47	.42	.48	.43	.39	.37		
5.0	.58	.49	.42	.55	.47	.41	.51	.44	.39	.47	.41	.36	.43	.38	.34	.32		
6.0	.52	.43	.36	.50	.42	.35	.46	.39	.34	.42	.36	.32	.39	.34	.30	.28		
7.0	.47	.38	.32	.45	.37	.31	.42	.35	.30	.39	.33	.28	.36	.31	.27	.24		
8.0	.43	.34	.28	.41	.33	.28	.38	.31	.26	.35	.29	.25	.33	.28	.24	.22		
9.0	.39	.31	.25	.38	.30	.25	.35	.28	.24	.33	.27	.23	.30	.25	.22	.19		
10.0	.36	.28	.23	.35	.27	.23	.32	.26	.22	.30	.25	.21	.28	.23	.20	.18		



C Range: 0 - 360DEG
 C Interval: 15.0DEG
 Test Speed: HIGH
 Temperature: 25.0DEG
 Operators: Alan Wang
 Test Date: 27 August 2023

γ Range: 0 - 180DEG
 γ Interval: 1.0DEG
 Test System: EVERFINE GO-R5000_V2 SYSTEM V2.00.416
 Humidity: 42.3%
 Test Distance: 2.500m [K=1.0391]
 Remarks:

WEC AND CCEC

Test:U:120.00V I:0.2463A P:27.620W PF:0.9344 Freq:60.00Hz Lamp Flux:1777.85x1 lm		
NAME: LED Wall Pack	TYPE:LED	WEIGHT:
SPEC.:LVF25M-5D28AC-BK_5000K	DIM.:	SERIAL No.:
MFR.: ASD Lighting Corp	SUR.:	Shielding Angle:

ρcc	80%			70%			50%			30%			10%			0
ρw	50%	30%	10%	50%	30%	10%	50%	30%	10%	50%	30%	10%	50%	30%	10%	0
ρfc	20%			20%			20%			20%			20%			0
RCR	RCR:Room Cavity Ratio						Wall Exitance Coefficients(WEC)									
0.0																
1.0	.346	.197	.062	.333	.190	.060	.308	.177	.056	.286	.165	.053	.265	.153	.049	
2.0	.308	.169	.052	.296	.163	.050	.274	.152	.047	.253	.142	.044	.234	.133	.042	
3.0	.278	.148	.044	.267	.143	.043	.247	.134	.041	.228	.125	.038	.211	.117	.036	
4.0	.252	.131	.039	.243	.127	.038	.225	.119	.036	.208	.111	.034	.192	.104	.032	
5.0	.231	.118	.034	.222	.114	.033	.206	.107	.032	.190	.100	.030	.176	.094	.028	
6.0	.213	.107	.031	.205	.104	.030	.190	.097	.028	.176	.091	.027	.162	.086	.025	
7.0	.197	.098	.028	.190	.095	.027	.176	.089	.026	.163	.084	.024	.151	.078	.023	
8.0	.184	.090	.025	.177	.087	.025	.164	.082	.023	.152	.077	.022	.141	.072	.021	
9.0	.172	.083	.023	.165	.081	.023	.154	.076	.022	.143	.071	.020	.132	.067	.019	
10.0	.161	.077	.021	.155	.075	.021	.144	.071	.020	.134	.067	.019	.124	.063	.018	

ρcc	80%			70%			50%			30%			10%			0
ρw	50%	30%	10%	50%	30%	10%	50%	30%	10%	50%	30%	10%	50%	30%	10%	0
ρfc	20%			20%			20%			20%			20%			0
RCR	RCR:Room Cavity Ratio						Ceiling Cavity Exitance Coefficients(CCEC)									
0.0	.341	.341	.341	.291	.291	.291	.199	.199	.199	.114	.114	.114	.037	.037	.037	
1.0	.334	.307	.283	.286	.264	.244	.196	.181	.168	.113	.105	.098	.036	.034	.032	
2.0	.327	.284	.249	.280	.245	.215	.192	.169	.150	.111	.099	.088	.036	.032	.029	
3.0	.319	.268	.227	.274	.231	.196	.188	.160	.138	.109	.094	.081	.035	.030	.027	
4.0	.312	.255	.212	.267	.220	.184	.184	.154	.130	.106	.090	.077	.034	.029	.025	
5.0	.304	.245	.202	.261	.212	.175	.180	.148	.124	.104	.087	.073	.034	.028	.024	
6.0	.297	.237	.194	.255	.205	.169	.176	.144	.120	.102	.085	.071	.033	.028	.023	
7.0	.290	.231	.189	.250	.200	.165	.173	.140	.117	.100	.083	.069	.032	.027	.023	
8.0	.284	.225	.185	.244	.195	.161	.169	.137	.114	.098	.081	.068	.032	.027	.023	
9.0	.278	.220	.181	.239	.191	.158	.166	.134	.112	.097	.079	.067	.031	.026	.022	
10.0	.272	.216	.179	.235	.188	.156	.163	.132	.111	.095	.078	.066	.031	.026	.022	

C Range: 0 - 360DEG
 C Interval: 15.0DEG
 Test Speed: HIGH
 Temperature: 25.0DEG
 Operators: Alan Wang
 Test Date: 27 August 2023

γ Range: 0 - 180DEG
 γ Interval: 1.0DEG
 Test System: EVERFINE GO-R5000_V2 SYSTEM V2.00.416
 Humidity: 42.3%
 Test Distance: 2.500m [K=1.0391]
 Remarks:

UGR(Unified Glare Rating) Table

Test:U:120.00V I:0.2463A P:27.620W PF:0.9344 Freq:60.00Hz Lamp Flux:1777.85x1 lm		
NAME: LED Wall Pack	TYPE:LED	WEIGHT:
SPEC.:LVF25M-5D28AC-BK_5000K	DIM.:	SERIAL No.:
MFR.: ASD Lighting Corp	SUR.:	Shielding Angle:

ceiling/cavity	0.7	0.7	0.5	0.5	0.3	0.7	0.7	0.5	0.5	0.3
walls	0.5	0.3	0.5	0.3	0.3	0.5	0.3	0.5	0.3	0.3
working plane	0.2	0.2	0.2	0.2	0.2	0.2	0.2	0.2	0.2	0.2
Room dimensions	Viewed crosswise					Viewed endwise				
x = 2H y = 2H	20.4	21.7	20.9	22.2	22.8	20.3	21.6	20.8	22.1	22.7
3H	22.9	24.1	23.4	24.6	25.2	22.8	24.0	23.4	24.6	25.2
4H	24.0	25.1	24.5	25.7	26.3	24.1	25.3	24.7	25.8	26.5
6H	24.8	25.9	25.4	26.5	27.1	25.5	26.5	26.1	27.1	27.8
8H	25.1	26.2	25.7	26.8	27.4	26.2	27.2	26.8	27.8	28.5
12H	25.4	26.4	26.0	27.0	27.7	27.0	27.9	27.6	28.6	29.3
4H 2H	21.2	22.4	21.8	22.9	23.6	21.2	22.3	21.7	22.9	23.5
3H	23.9	24.9	24.6	25.5	26.2	23.9	24.9	24.5	25.5	26.2
4H	25.2	26.1	25.9	26.7	27.5	25.4	26.3	26.0	26.9	27.6
6H	26.3	27.1	26.9	27.7	28.5	26.9	27.7	27.6	28.3	29.1
8H	26.7	27.4	27.4	28.1	28.9	27.7	28.4	28.4	29.1	29.9
12H	27.0	27.7	27.7	28.4	29.2	28.6	29.2	29.3	29.9	30.7
8H 4H	25.8	26.6	26.5	27.2	28.0	25.9	26.7	26.6	27.4	28.1
6H	27.2	27.8	27.9	28.5	29.3	27.7	28.4	28.5	29.1	29.9
8H	27.8	28.4	28.5	29.1	29.9	28.7	29.3	29.5	30.0	30.9
12H	28.4	28.9	29.1	29.6	30.5	29.8	30.3	30.6	31.1	31.9
12H 4H	25.9	26.6	26.6	27.3	28.1	26.0	26.7	26.7	27.4	28.2
6H	27.5	28.0	28.2	28.8	29.6	28.0	28.5	28.7	29.2	30.1
8H	28.2	28.7	29.0	29.5	30.3	29.1	29.6	29.8	30.3	31.2
Variations with the observer position at spacings:										
S = 1.0H	+ 0.1 / - 0.1					+ 0.1 / - 0.1				
1.5H	+ 0.2 / - 0.3					+ 0.2 / - 0.3				
2.0H	+ 0.2 / - 0.4					+ 0.2 / - 0.4				

CIE Pub.117, 1778 lm Total Lamp Luminous Flux Corrected (8log(F/F0) = 2.0)
 Area: 0.0657 m2

C Range: 0 - 360DEG
 C Interval: 15.0DEG
 Test Speed: HIGH
 Temperature: 25.0DEG
 Operators: Alan Wang
 Test Date: 27 August 2023

γ Range: 0 - 180DEG
 γ Interval: 1.0DEG
 Test System: EVERFINE GO-R5000_V2 SYSTEM V2.00.416
 Humidity: 42.3%
 Test Distance: 2.500m [K=1.0391]
 Remarks:

UTILIZATION FACTORS TABLE

Test:U:120.00V I:0.2463A P:27.620W PF:0.9344 Freq:60.00Hz Lamp Flux:1777.85x1 lm		
NAME: LED Wall Pack	TYPE:LED	WEIGHT:
SPEC.:LVF25M-5D28AC-BK_5000K	DIM.:	SERIAL No.:
MFR.: ASD Lighting Corp	SUR.:	Shielding Angle:

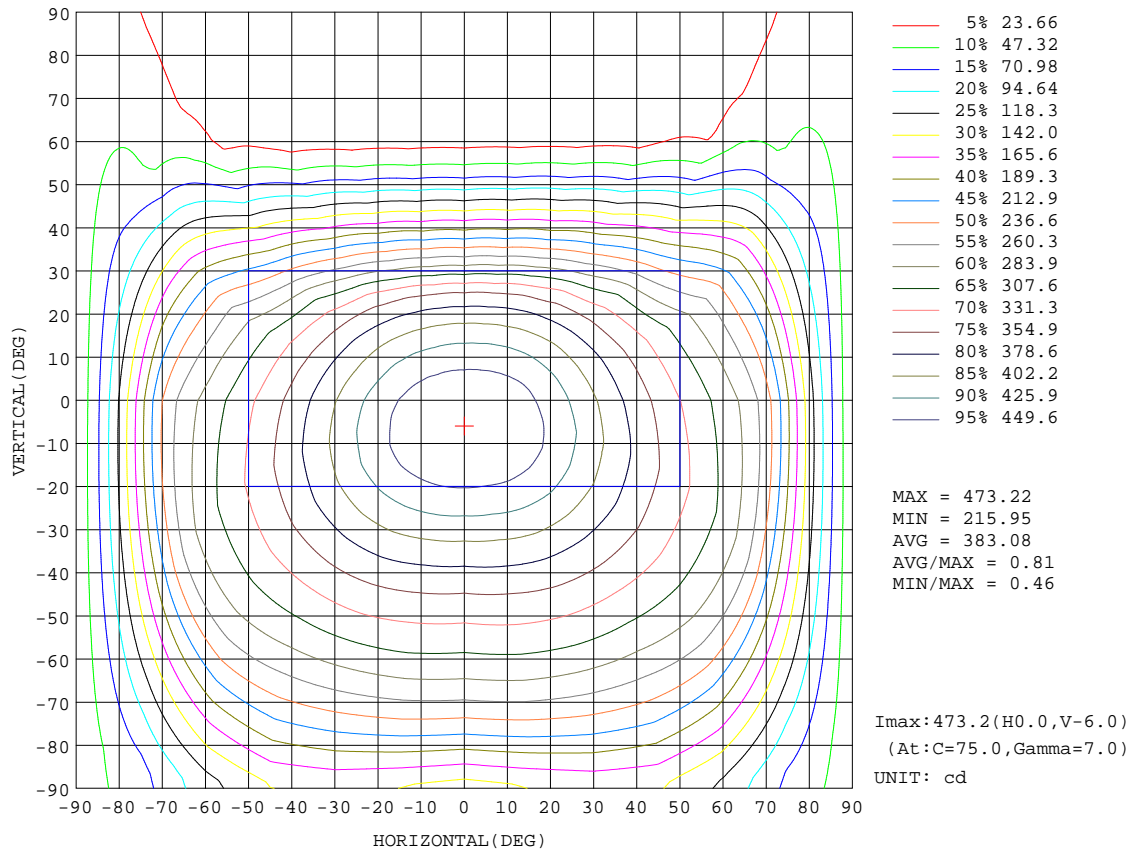
REFLECTANCE										
Ceiling	0.8	0.8	0.8	0.7	0.7	0.7	0.5	0.5	0.5	0
Walls	0.7	0.5	0.3	0.7	0.5	0.3	0.7	0.5	0.3	0
Working plane	0.2	0.2	0.2	0.2	0.2	0.2	0.2	0.2	0.2	0
ROOM INDEX	UTILIZATION FACTORS(PERCENT) $k(RI) \times RCR = 5$									
k = 0.60	50	38	31	49	38	31	47	37	30	24
0.80	59	47	39	58	46	39	55	45	38	30
1.00	67	55	47	65	54	46	61	54	45	36
1.25	74	62	54	72	61	53	67	58	51	42
1.50	79	68	60	76	66	59	71	63	56	46
2.00	86	76	68	83	74	67	77	69	63	52
2.50	90	81	74	87	78	72	80	73	68	55
3.00	94	86	79	90	83	77	83	77	72	59
4.00	98	91	85	94	88	83	87	82	78	63
5.00	101	95	90	97	91	87	89	85	81	65
ROOM INDEX	UF(total)									Direct
According to DIN EN 13032-2 2004			Suspended				SHRNOM = 1.25			

C Range: 0 - 360DEG
C Interval: 15.0DEG
Test Speed: HIGH
Temperature: 25.0DEG
Operators: Alan Wang
Test Date: 27 August 2023

γ Range: 0 - 180DEG
 γ Interval: 1.0DEG
Test System: EVERFINE GO-R5000_V2 SYSTEM V2.00.416
Humidity: 42.3%
Test Distance: 2.500m [K=1.0391]
Remarks:

ISOCANDELA DIAGRAM

Test:U:120.00V I:0.2463A P:27.620W PF:0.9344 Freq:60.00Hz Lamp Flux:1777.85x1 lm		
NAME: LED Wall Pack	TYPE:LED	WEIGHT:
SPEC.:LVF25M-5D28AC-BK_5000K	DIM.:	SERIAL No.:
MFR.: ASD Lighting Corp	SUR.:	Shielding Angle:

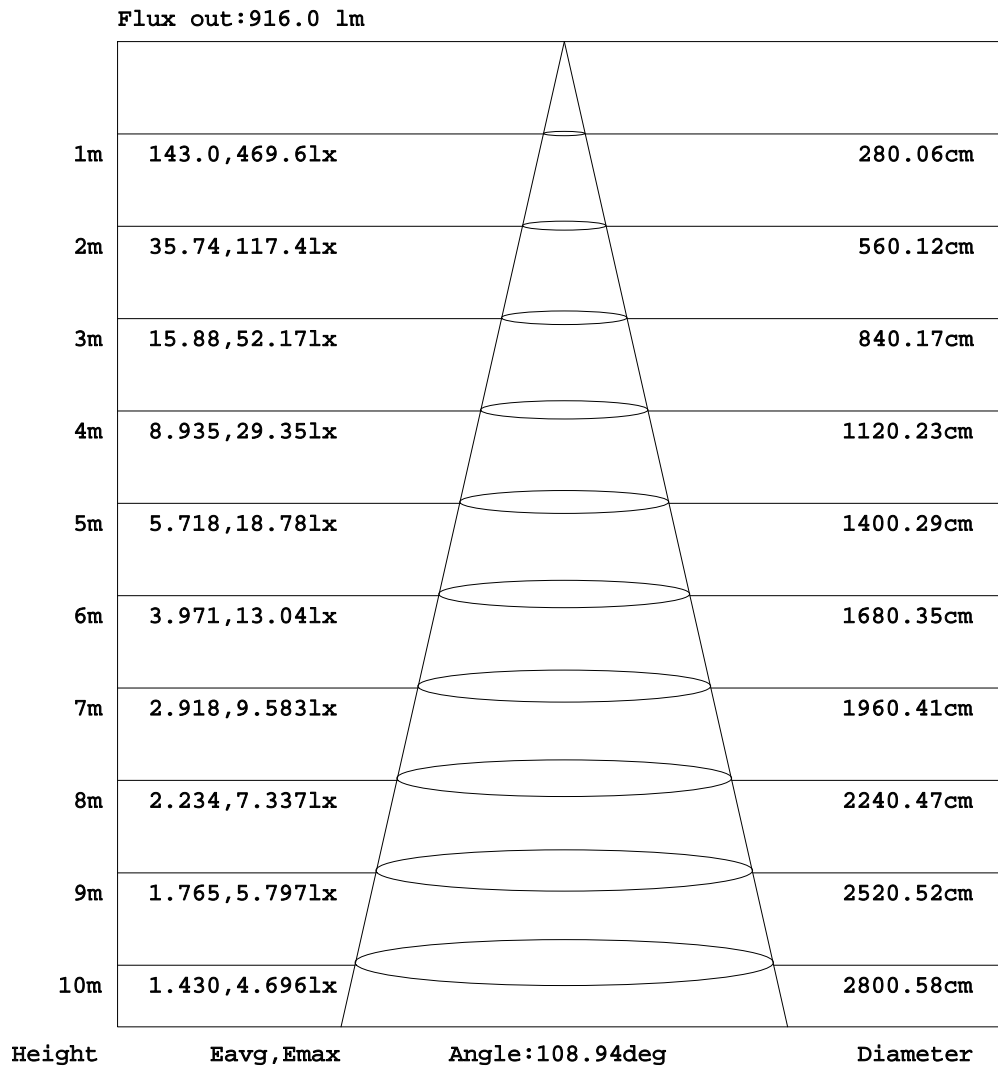


C Range: 0 - 360DEG
 C Interval: 15.0DEG
 Test Speed: HIGH
 Temperature: 25.0DEG
 Operators: Alan Wang
 Test Date: 27 August 2023

γ Range: 0 - 180DEG
 γ Interval: 1.0DEG
 Test System: EVERFINE GO-R5000_V2 SYSTEM V2.00.416
 Humidity: 42.3%
 Test Distance: 2.500m [K=1.0391]
 Remarks:

AAI Figure

Test:U:120.00V I:0.2463A P:27.620W PF:0.9344 Freq:60.00Hz Lamp Flux:1777.85x1 lm		
NAME: LED Wall Pack	TYPE:LED	WEIGHT:
SPEC.:LVF25M-5D28AC-BK_5000K	DIM.:	SERIAL No.:
MFR.: ASD Lighting Corp	SUR.:	Shielding Angle:



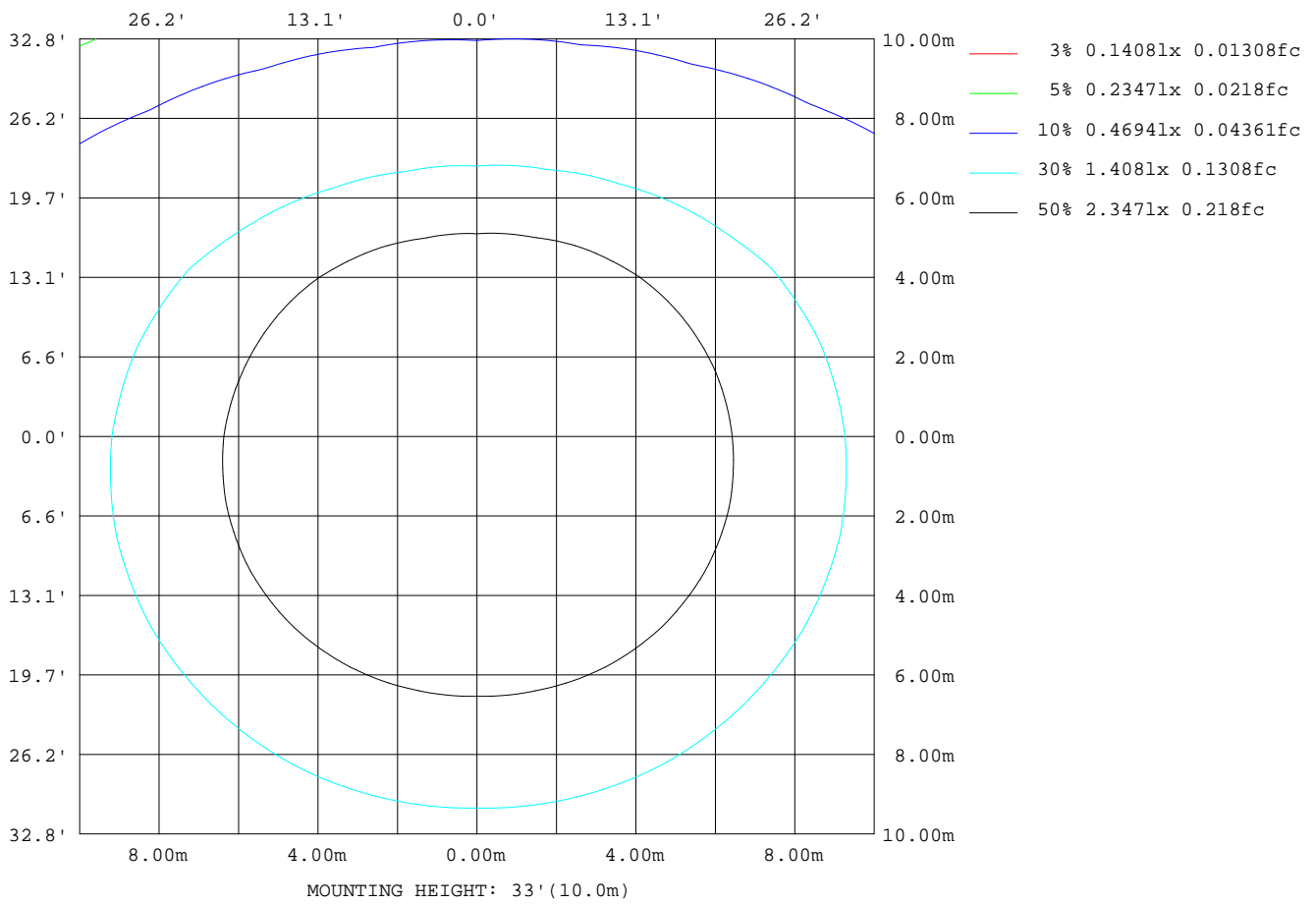
Note:The Curves indicate the illuminated area and the average illumination when the luminaire is at different distance.

C Range: 0 - 360DEG
 C Interval: 15.0DEG
 Test Speed: HIGH
 Temperature: 25.0DEG
 Operators:Alan Wang
 Test Date:27 August 2023

γ Range: 0 - 180DEG
 γ Interval: 1.0DEG
 Test System:EVERFINE GO-R5000_V2 SYSTEM V2.00.416
 Humidity: 42.3%
 Test Distance:2.500m [K=1.0391]
 Remarks:

ISOLUX DIAGRAM

Test:U:120.00V I:0.2463A P:27.620W PF:0.9344 Freq:60.00Hz Lamp Flux:1777.85x1 lm		
NAME: LED Wall Pack	TYPE:LED	WEIGHT:
SPEC.:LVF25M-5D28AC-BK_5000K	DIM.:	SERIAL No.:
MFR.: ASD Lighting Corp	SUR.:	Shielding Angle:



C Range: 0 - 360DEG
 C Interval: 15.0DEG
 Test Speed: HIGH
 Temperature: 25.0DEG
 Operators: Alan Wang
 Test Date: 27 August 2023

γ Range: 0 - 180DEG
 γ Interval: 1.0DEG
 Test System: EVERFINE GO-R5000_V2 SYSTEM V2.00.416
 Humidity: 42.3%
 Test Distance: 2.500m [K=1.0391]
 Remarks:

LED Avg.L Report

Test:U:120.00V I:0.2463A P:27.620W PF:0.9344 Freq:60.00Hz Lamp Flux:1777.85x1 lm		
NAME: LED Wall Pack	TYPE:LED	WEIGHT:
SPEC.:LVF25M-5D28AC-BK_5000K	DIM.:	SERIAL No.:
MFR.: ASD Lighting Corp	SUR.:	Shielding Angle:

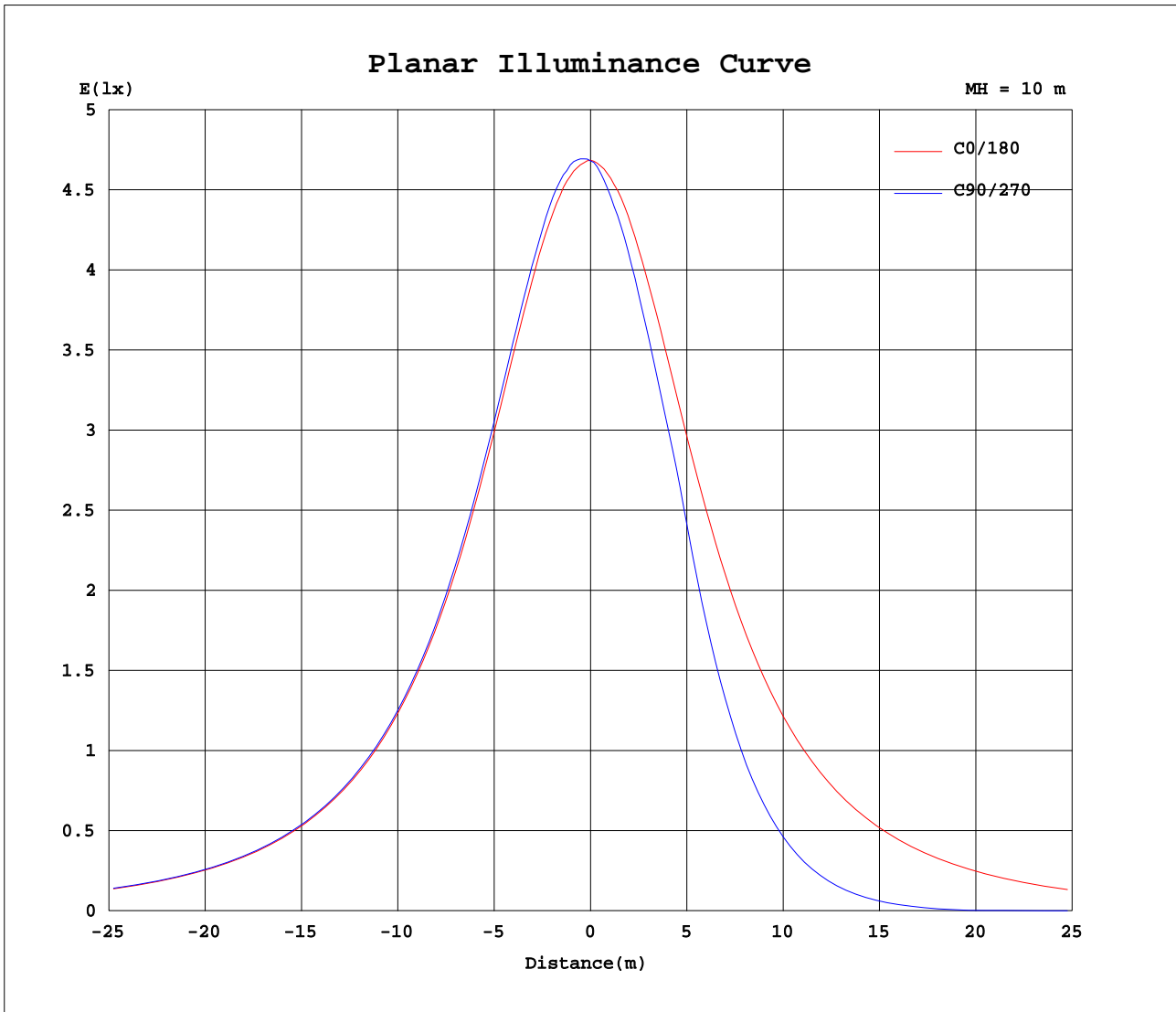
AvgL	cd/m2
L_0~180(65)av	9851
L_0~180(75)av	10901
L_0~180(85)av	12338
L_90~270(65)av	5123
L_90~270(75)av	6720
L_90~270(85)av	14098
L_45(65)av	5742
L_45(75)av	7000
L_45(85)av	15106

Standard: GB/T 29293-2012

C Range: 0 - 360DEG
C Interval: 15.0DEG
Test Speed: HIGH
Temperature: 25.0DEG
Operators: Alan Wang
Test Date: 27 August 2023

γ Range: 0 - 180DEG
 γ Interval: 1.0DEG
Test System: EVERFINE GO-R5000_V2 SYSTEM V2.00.416
Humidity: 42.3%
Test Distance: 2.500m [K=1.0391]
Remarks:

Planar Illuminance Curve



C Range: 0 - 360DEG
C Interval: 15.0DEG
Test Speed: HIGH
Temperature: 25.0DEG
Operators: Alan Wang
Test Date: 27 August 2023

γ Range: 0 - 180DEG
 γ Interval: 1.0DEG
Test System: EVERFINE GO-R5000_V2 SYSTEM V2.00.416
Humidity: 42.3%
Test Distance: 2.500m [K=1.0391]
Remarks:

LUMINOUS DISTRIBUTION INTENSITY DATA

Test:U:120.00V I:0.2463A P:27.620W PF:0.9344 Freq:60.00Hz Lamp Flux:1777.85x1 lm		
NAME: LED Wall Pack	TYPE:LED	WEIGHT:
SPEC.:LVF25M-5D28AC-BK_5000K	DIM.:	SERIAL No.:
MFR.: ASD Lighting Corp	SUR.:	Shielding Angle:

Table--1

UNIT: cd

C(DEG) γ (DEG)	0	15	30	45	60	75	90	105	120	135	150	165	180	195	210	225	240	255	270
0	469	468	468	468	468	468	468	468	468	469	469	468	469	468	468	468	468	468	468
5	467	468	470	471	472	472	473	472	472	471	469	467	465	463	461	459	457	456	456
10	462	465	468	471	471	472	472	472	470	469	467	463	460	455	450	445	442	440	440
15	454	458	463	465	465	464	464	464	464	464	460	456	450	443	435	428	421	418	417
20	440	447	452	454	453	451	451	451	452	453	450	443	437	426	417	406	397	391	389
25	423	432	438	439	438	434	433	434	436	437	435	429	420	406	394	380	368	358	354
30	405	415	421	422	420	415	413	415	418	420	418	411	401	385	369	352	326	304	297
35	385	397	403	403	401	395	393	395	400	401	400	394	381	363	342	311	273	248	240
40	367	379	385	384	382	376	372	376	380	383	382	375	362	341	313	262	220	191	183
45	349	363	367	365	363	358	354	357	362	364	364	359	343	319	274	213	166	139	131
50	332	347	350	347	345	341	337	340	343	345	347	342	326	295	230	162	116	90.8	83.8
55	315	331	332	329	327	324	320	323	326	327	329	326	309	270	183	112	70.5	49.9	44.4
60	297	314	314	310	309	307	302	306	307	308	311	309	291	238	135	66.0	32.8	19.2	15.4
65	277	295	295	290	289	287	282	285	286	287	291	290	270	196	85.2	28.1	6.50	2.64	2.49
70	246	268	270	266	265	263	258	261	262	263	265	260	237	145	40.8	3.71	0.29	0.27	0.27
75	192	219	235	238	238	235	228	233	235	235	228	208	179	86.8	13.8	1.39	0.30	0.29	0.29
80	130	160	192	206	207	203	196	202	205	203	185	151	120	41.3	11.6	1.45	0.32	0.32	0.32
85	74.2	106	148	173	176	170	161	169	174	170	142	98.3	67.1	30.5	10.8	1.47	0.33	0.33	0.34
90	33.7	64.9	113	145	149	142	134	142	148	142	109	61.5	33.0	23.6	9.56	1.47	0.36	0.36	0.36
95	39.6	68.8	112	140	143	136	127	136	142	138	110	69.1	40.9	22.3	9.17	1.46	0.38	0.38	0.37
100	57.0	84.0	118	138	139	131	123	131	138	136	117	85.2	58.5	22.3	8.80	1.43	0.40	0.40	0.40
105	75.4	99.3	123	135	133	125	117	126	132	133	122	100	76.0	28.8	8.70	1.37	0.41	0.41	0.41
110	91.4	112	127	130	127	119	111	119	126	128	125	112	90.3	41.3	9.96	1.96	0.41	0.41	0.40
115	98.4	114	122	122	119	112	105	112	118	121	120	113	95.6	50.9	13.0	2.99	1.33	0.85	0.45
120	92.9	106	113	114	111	104	97.2	104	110	113	112	105	89.8	51.6	17.0	5.71	2.65	1.70	1.70
125	83.9	97.3	104	105	102	95.1	89.0	95.1	102	104	103	95.7	80.9	48.7	22.8	10.7	4.98	2.92	2.76
130	76.3	87.9	94.4	95.7	92.7	86.0	81.0	86.1	92.7	95.2	93.8	86.8	74.0	47.4	26.3	15.6	8.02	4.15	4.20
135	69.7	78.8	84.6	86.0	83.3	77.3	72.9	77.5	83.4	85.7	84.1	78.0	68.0	48.1	29.7	15.5	9.97	5.15	5.37
140	62.2	69.8	75.1	76.7	74.4	68.8	65.2	69.2	74.5	76.7	75.1	69.4	59.2	42.2	29.0	17.6	10.9	6.26	6.32
145	54.3	61.3	66.1	67.5	65.5	60.7	57.8	60.9	65.8	67.6	66.1	61.2	52.0	37.1	29.0	19.3	12.6	7.67	7.39
150	47.3	53.1	57.1	58.4	56.8	52.9	50.8	53.0	57.1	58.7	57.3	53.3	46.8	34.4	28.2	19.9	14.4	9.26	8.55
155	40.6	45.2	48.5	49.7	48.4	45.5	44.1	45.6	48.7	50.0	49.0	45.6	40.0	31.5	27.9	20.2	16.1	11.1	10.1
160	35.4	37.7	40.4	41.3	40.3	38.5	37.7	38.5	40.4	41.6	40.8	38.4	34.6	30.0	24.0	20.9	17.3	13.6	11.5
165	27.9	31.0	32.6	33.2	32.9	32.0	31.6	32.0	32.9	33.6	33.0	31.1	28.3	27.0	19.2	18.2	17.6	14.1	13.1
170	16.7	22.3	25.4	26.0	26.1	26.0	26.0	26.0	26.0	25.9	21.9	18.2	16.7	16.4	13.9	10.9	10.3	10.5	13.3
175	10.6	12.5	16.8	19.5	20.5	20.6	20.7	20.6	17.4	13.8	11.4	10.2	8.97	8.89	7.41	7.51	6.38	5.98	5.74
180	12.8	11.4	12.5	16.2	11.6	14.9	16.9	9.80	4.65	8.10	10.8	15.9	12.0	12.1	12.8	13.0	12.5	12.0	10.7

C Range: 0 - 360DEG
 C Interval: 15.0DEG
 Test Speed: HIGH
 Temperature: 25.0DEG
 Operators: Alan Wang
 Test Date: 27 August 2023

γ Range: 0 - 180DEG
 γ Interval: 1.0DEG
 Test System: EVERFINE GO-R5000_V2 SYSTEM V2.00.416
 Humidity: 42.3%
 Test Distance: 2.500m [K=1.0391]
 Remarks:

LUMINOUS DISTRIBUTION INTENSITY DATA

Test:U:120.00V I:0.2463A P:27.620W PF:0.9344 Freq:60.00Hz Lamp Flux:1777.85x1 lm		
NAME: LED Wall Pack	TYPE:LED	WEIGHT:
SPEC.:LVF25M-5D28AC-BK_5000K	DIM.:	SERIAL No.:
MFR.: ASD Lighting Corp	SUR.:	Shielding Angle:

Table--2

UNIT: cd

C(DEG) γ (DEG)	285	300	315	330	345														
0	468	468	469	469	468														
5	457	459	461	463	466														
10	441	443	447	453	459														
15	419	425	432	439	447														
20	393	400	411	421	431														
25	361	372	386	400	412														
30	308	333	357	375	391														
35	252	280	320	350	370														
40	195	227	272	322	349														
45	142	173	223	286	327														
50	93.9	122	172	244	305														
55	52.3	75.7	121	198	282														
60	20.6	36.6	74.0	150	256														
65	2.70	8.52	33.4	99.3	217														
70	0.28	0.40	5.53	52.4	168														
75	0.30	0.31	1.94	19.3	107														
80	0.32	0.33	2.01	14.2	53.7														
85	0.34	0.34	2.05	12.9	33.7														
90	0.36	0.36	2.06	11.7	26.1														
95	0.37	0.37	2.05	11.2	24.8														
100	0.39	0.39	2.03	10.8	25.5														
105	0.40	0.40	1.96	10.8	34.6														
110	0.40	0.40	2.57	12.3	47.6														
115	0.91	1.38	3.80	16.5	57.0														
120	1.79	2.84	7.13	20.3	57.5														
125	2.97	5.56	12.3	25.3	53.0														
130	4.40	8.52	17.3	28.8	51.6														
135	5.65	10.7	18.4	31.2	52.3														
140	7.08	12.3	19.5	32.2	45.2														
145	8.60	13.6	22.1	31.4	39.4														
150	9.90	13.8	21.3	25.5	34.3														
155	11.3	15.0	20.2	26.8	28.8														
160	12.1	15.0	19.0	22.6	26.2														
165	12.8	14.5	17.3	18.3	18.9														
170	13.3	14.2	14.3	11.7	12.2														
175	6.40	8.12	8.12	7.39	8.34														
180	9.93	9.22	9.62	11.1	12.4														

C Range: 0 - 360DEG
 C Interval: 15.0DEG
 Test Speed: HIGH
 Temperature: 25.0DEG
 Operators: Alan Wang
 Test Date: 27 August 2023

γ Range: 0 - 180DEG
 γ Interval: 1.0DEG
 Test System: EVERFINE GO-R5000_V2 SYSTEM V2.00.416
 Humidity: 42.3%
 Test Distance: 2.500m [K=1.0391]
 Remarks: