



LED ROUND OUTDOOR WALL CYLINDER

► **DESIGN & OPTIONS** - LED ROUND OUTDOOR WALL CYLINDER has a modern design with effective up/down illumination. This fixture has a tempered glass cover and durable die-cast aluminum body that is highly resistant to rust. The high quality reflector creates a 50° beam angle as well. This fixture is offered in a 3000K, 4000K or 5000K color temperature. Models with 120-277V, built-in dusk-to-dawn photocell and color adjustable options are also available, you can choose either 3000K, 4000K or 5000K with a simple switch. The photocell allows the fixture to automatically turn on/off depending on the time of day. It comes in BLACK, BRONZE, WHITE, or STAINLESS STEEL finish.

► **INSTALLATION** - Installation is quick and easy: just attach the cross bar to the J-box with screws, connect the wires, and fasten the fixture to the mounting plate. Waterproof gaskets, decorative nuts and all necessary installation accessories are provided. Refer to install instructions for detailed steps.

► **APPLICATION** - This LED ROUND OUTDOOR WALL CYLINDER creates a cozy ambience that is great for indoor and outdoor projects such as decks, front doors, porches, patios, gardens, corridors, balconies, villas, and walkways. The fixture is Wet location rated and suitable for severe weather conditions.

► **ENERGY SAVINGS & EFFICIENCY** - Replacing an incandescent fixture with LED ROUND OUTDOOR WALL CYLINDER can save you 8 times as much on your current energy costs. With a lifespan of 50,000 hours, these fixtures are made to last decades under normal operation! This fixture will save you a significant amount of money in its lifetime.

► **CERTIFICATION & WARRANTY** - Buy with confidence: ASD provides a 5-year warranty along with ETL and ENERGY STAR certifications to guarantee top quality products and safety!

Top US certifications allow participation in rebates; please check the rebate programs available in your state.

Catalog number	
Notes	
Type	



Finish:	Black	Bronze
	Steel	White

PRODUCT LEGEND:

Family	Voltage	Light Direction	Dimming	Watts	CCT	Options	Finish
ASD-OLCLR	XX	X	N	XX	XX	XX	XX
LED Round Outdoor Wall Cylinder	Blank = 120 V MV = 120-277 V	1 2	Non-dimmable	9 = 9 W 18 = 18 W	30 = 3,000 K 40 = 4,000 K 50 = 5,000 K CC = 3,000/4,000/5,000 K	Blank = No options PC = Photocell	BK = Black BZ = Oil Rubbed Bronze SS = Stainless Steel WH = White

LED ROUND OUTDOOR WALL CYLINDER:

Model	Light Direction	Watts	Voltage	Lumens	CCT	Options	Finish	Dimensions (LxWxH)
ASD-OLCLR-1N930-BK	1	9 W	120 V	750 lm	3,000 K	-	Black	4 3/8" x 6 1/2" x 7 7/8"
ASD-OLCLR-1N940-BK	1	9 W	120 V	750 lm	4,000 K	-	Black	4 3/8" x 6 1/2" x 7 7/8"
ASD-OLCLR-1N950-BK	1	9 W	120 V	750 lm	5,000 K	-	Black	4 3/8" x 6 1/2" x 7 7/8"
ASD-OLCLR-1N930-BZ	1	9 W	120 V	750 lm	3,000 K	-	Oil Rubbed Bronze	4 3/8" x 6 1/2" x 7 7/8"
ASD-OLCLR-1N940-BZ	1	9 W	120 V	750 lm	4,000 K	-	Oil Rubbed Bronze	4 3/8" x 6 1/2" x 7 7/8"
ASD-OLCLR-1N950-BZ	1	9 W	120 V	750 lm	5,000 K	-	Oil Rubbed Bronze	4 3/8" x 6 1/2" x 7 7/8"
ASD-OLCLR-1N930-SS	1	9 W	120 V	750 lm	3,000 K	-	Stainless Steel	4 3/8" x 6 1/2" x 7 7/8"
ASD-OLCLR-1N950-SS	1	9 W	120 V	750 lm	5,000 K	-	Stainless Steel	4 3/8" x 6 1/2" x 7 7/8"
ASD-OLCLR-1N930-WH	1	9 W	120 V	750 lm	3,000 K	-	White	4 3/8" x 6 1/2" x 7 7/8"
ASD-OLCLR-1N950-WH	1	9 W	120 V	750 lm	5,000 K	-	White	4 3/8" x 6 1/2" x 7 7/8"
ASD-OLCLR-2N1830-BK	2	18 W	120 V	1,500 lm	3,000 K	-	Black	4 3/8" x 6 1/2" x 11 13/16"
ASD-OLCLR-2N1840-BK	2	18 W	120 V	1,500 lm	4,000 K	-	Black	4 3/8" x 6 1/2" x 11 13/16"
ASD-OLCLR-2N1850-BK	2	18 W	120 V	1,500 lm	5,000 K	-	Black	4 3/8" x 6 1/2" x 11 13/16"
ASD-OLCLR-2N1830-BZ	2	18 W	120 V	1,500 lm	3,000 K	-	Oil Rubbed Bronze	4 3/8" x 6 1/2" x 11 13/16"
ASD-OLCLR-2N1840-BZ	2	18 W	120 V	1,500 lm	4,000 K	-	Oil Rubbed Bronze	4 3/8" x 6 1/2" x 11 13/16"
ASD-OLCLR-2N1850-BZ	2	18 W	120 V	1,500 lm	5,000 K	-	Oil Rubbed Bronze	4 3/8" x 6 1/2" x 11 13/16"
ASD-OLCLR-2N1830-SS	2	18 W	120 V	1,500 lm	3,000 K	-	Stainless Steel	4 3/8" x 6 1/2" x 11 13/16"
ASD-OLCLR-2N1850-SS	2	18 W	120 V	1,500 lm	5,000 K	-	Stainless Steel	4 3/8" x 6 1/2" x 11 13/16"
ASD-OLCLR-2N1830-WH	2	18 W	120 V	1,500 lm	3,000 K	-	White	4 3/8" x 6 1/2" x 11 13/16"
ASD-OLCLR-2N1850-WH	2	18 W	120 V	1,500 lm	5,000 K	-	White	4 3/8" x 6 1/2" x 11 13/16"
ASD-OLCLR-MV-1N9CC-PC-BK	1	9 W	120-277 V	750 lm	3,000/4,000/5,000 K	Photocell	Black	4 3/8" x 6 1/2" x 7 7/8"
ASD-OLCLR-MV-1N9CC-PC-BZ	1	9 W	120-277 V	750 lm	3,000/4,000/5,000 K	Photocell	Oil Rubbed Bronze	4 3/8" x 6 1/2" x 7 7/8"
ASD-OLCLR-MV-2N18CC-PC-BK	2	18 W	120-277 V	1,500 lm	3,000/4,000/5,000 K	Photocell	Black	4 3/8" x 6 1/2" x 11 13/16"
ASD-OLCLR-MV-2N18CC-PC-BZ	2	18 W	120-277 V	1,500 lm	3,000/4,000/5,000 K	Photocell	Oil Rubbed Bronze	4 3/8" x 6 1/2" x 11 13/16"

For most up-to-date spec sheets please refer to asd-lighting.com



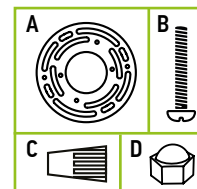
LED ROUND OUTDOOR WALL CYLINDER

PRODUCT SPECIFICATIONS:

Construction & Materials					
Housing	Aluminum				
Lens	Clear glass				
Finish Color	Black, Oil Rubbed Bronze, Stainless Steel, White				
Weight	1 Light Direction	1.9 lb (0.9 kg)			
	2 Light Direction	2.6 lb (1.2 kg)			
Environmental System					
Work Environment	Suitable for Wet Location				
Operating Temperature	ASD-OLCLR-1N930-BK	-40°F to 113°F -40°C to 45°C	ASD-OLCLR-2N1830-BK		
	ASD-OLCLR-1N940-BK		ASD-OLCLR-2N1840-BK		
	ASD-OLCLR-1N950-BK		ASD-OLCLR-2N1850-BK		
	ASD-OLCLR-1N930-BZ		ASD-OLCLR-2N1830-BZ		
	ASD-OLCLR-1N940-BZ		ASD-OLCLR-2N1840-BZ		
	ASD-OLCLR-1N950-BZ		ASD-OLCLR-2N1850-BZ		
	ASD-OLCLR-1N930-SS		ASD-OLCLR-2N1830-SS		
	ASD-OLCLR-1N950-SS		ASD-OLCLR-2N1850-SS		
	ASD-OLCLR-1N930-WH		ASD-OLCLR-2N1830-WH		
	ASD-OLCLR-1N950-WH		ASD-OLCLR-2N1850-WH		
	ASD-OLCLR-MV-1N9CC-PC-BK		ASD-OLCLR-MV-2N18CC-PC-BK		
	ASD-OLCLR-MV-1N9CC-PC-BZ		ASD-OLCLR-MV-2N18CC-PC-BZ		
	L-70 Life		> 50,000 hrs		
	Optical System				
Luminous Flux	1 Light Direction	750 lm			
	2 Light Direction	1,500 lm			
Color Temperature	3,000 K; 4,000 K, 5,000 K				
CRI	> 80				
Electrical System					
Input Voltage	120 V, 120-277 V				
Max input current	ASD-OLCLR-1N930-BK	0.15 A	ASD-OLCLR-2N1830-BK		
	ASD-OLCLR-1N940-BK		ASD-OLCLR-2N1840-BK		
	ASD-OLCLR-1N950-BK		ASD-OLCLR-2N1850-BK		
	ASD-OLCLR-1N930-BZ		ASD-OLCLR-2N1830-BZ		
	ASD-OLCLR-1N940-BZ		ASD-OLCLR-2N1840-BZ		
	ASD-OLCLR-1N950-BZ		ASD-OLCLR-2N1850-BZ		
	ASD-OLCLR-1N930-SS		ASD-OLCLR-2N1830-SS		
	ASD-OLCLR-1N950-SS		ASD-OLCLR-2N1850-SS		
	ASD-OLCLR-1N930-WH		ASD-OLCLR-2N1830-WH		
	ASD-OLCLR-1N950-WH		ASD-OLCLR-2N1850-WH		
	ASD-OLCLR-MV-1N9CC-PC-BK		ASD-OLCLR-MV-2N18CC-PC-BK		
	ASD-OLCLR-MV-1N9CC-PC-BZ		ASD-OLCLR-MV-2N18CC-PC-BZ		
	Inrush current (Action time)		ASD-OLCLR-1N930-BK	0.075 A (0.1 S)	ASD-OLCLR-2N1830-BK
			ASD-OLCLR-1N940-BK		ASD-OLCLR-2N1840-BK
ASD-OLCLR-1N950-BK		ASD-OLCLR-2N1850-BK			
ASD-OLCLR-1N930-BZ		ASD-OLCLR-2N1830-BZ			
ASD-OLCLR-1N940-BZ		ASD-OLCLR-2N1840-BZ			
ASD-OLCLR-1N950-BZ		ASD-OLCLR-2N1850-BZ			
ASD-OLCLR-1N930-SS		ASD-OLCLR-2N1830-SS			
ASD-OLCLR-1N950-SS		ASD-OLCLR-2N1850-SS			
ASD-OLCLR-1N930-WH		ASD-OLCLR-2N1830-WH			
ASD-OLCLR-1N950-WH		ASD-OLCLR-2N1850-WH			
ASD-OLCLR-MV-1N9CC-PC-BK		ASD-OLCLR-MV-2N18CC-PC-BK			
ASD-OLCLR-MV-1N9CC-PC-BZ		ASD-OLCLR-MV-2N18CC-PC-BZ			
AC input range		ASD-OLCLR-1N930-BK	min 108 V max 132 V		ASD-OLCLR-2N1830-BK
		ASD-OLCLR-1N940-BK			ASD-OLCLR-2N1840-BK
	ASD-OLCLR-1N950-BK	ASD-OLCLR-2N1850-BK			
	ASD-OLCLR-1N930-BZ	ASD-OLCLR-2N1830-BZ			
	ASD-OLCLR-1N940-BZ	ASD-OLCLR-2N1840-BZ			
	ASD-OLCLR-1N950-BZ	ASD-OLCLR-2N1850-BZ			
	ASD-OLCLR-1N930-SS	ASD-OLCLR-2N1830-SS			
	ASD-OLCLR-1N950-SS	ASD-OLCLR-2N1850-SS			
	ASD-OLCLR-1N930-WH	ASD-OLCLR-2N1830-WH			
	ASD-OLCLR-1N950-WH	ASD-OLCLR-2N1850-WH			
	ASD-OLCLR-MV-1N9CC-PC-BK	ASD-OLCLR-MV-2N18CC-PC-BK			
	ASD-OLCLR-MV-1N9CC-PC-BZ	ASD-OLCLR-MV-2N18CC-PC-BZ			
	Off State Power	0 W			
	Power Consumption	1 Light Direction		9 W	
2 Light Direction		18 W			
Power Factor	> 0.9				
Regular and Voluntary Certifications					
5-year limited warranty					
cETLus certified 4001256					
Energy Star listed					

PACKAGE CONTENTS:

Description	Q-ty
LED Round Outdoor Wall Cylinder or LED Round Outdoor Wall Cylinder with Photocell	1
Mounting bracket (A)	1
Screw (B)	2
Wire Nut (C)	3
Decorative nuts (D)	2
Box	1
Cut sheet	2



INSTALLATION GUIDE

IMPORTANT SAFETY INFORMATION:

Please read all the instructions below before installation.

- Make sure that the supply voltage corresponds to the rated product voltage.
- The product must be installed by a qualified electrician in accordance with the National Electrical Code and corresponding local codes.
- If the product is damaged, do not use it.

⚠ WARNING

RISK OF PERSONAL INJURY – READ and follow all WARNINGS and installation instructions.

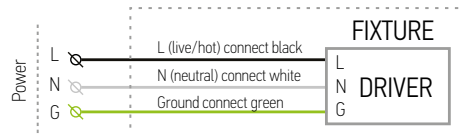
Keep or give to the owner for future reference.

Risk of cuts: Wear gloves to prevent cuts or abrasions when removing from carton, handling, installing, and maintaining this product.

Risk of electric shock: This product must be installed in accordance with the applicable installation code by a person familiar with the construction and operation of the product and the hazards involved.

Risk of Fire: Minimum 194°F supply conductors. Consult a qualified electrician to ensure correct branch circuit conductor. ASD® assumes no responsibility for claims arising out of improper or careless installation or handling of this product.

ELECTRICAL SCHEMATIC DIAGRAM:

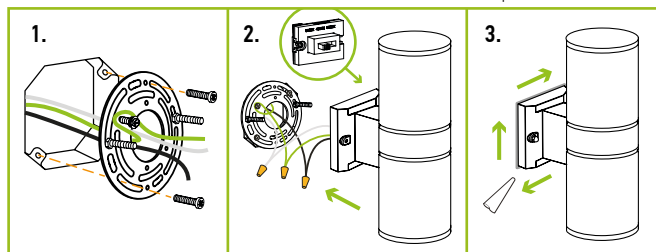


PHOTOCELL SETTINGS:

- The fixtures with a built-in photocell automatically turn off during daylight hours.
- The light is always ON when luminance is < 90 lux (night time).
- The light is always OFF when luminance is > 90 lux (day time).

INSTALLATION STEPS:

- Screw the two mounting screws onto the mounting plate. Attach the mounting plate to the outlet box using screws. Before tightening the screws, try to fit the fixture to ensure the angle of the mounting plate is correct.
- Choose needed color temperature by adjusting switch position. Connect the wires: Black to Black, White to White, Green to Green. Secure the connection with wire nuts.
- Place the fixture base on the wall by aligning the protruding mounting screws through the holes on the wall plate. Put the waterproof gasket on each mounting screw. Tighten the fixture to the wall using two decorative nuts. For outdoor locations it is recommended to use silicone (not included) shown in the picture below.



For most up-to-date spec sheets please refer to asd-lighting.com



LED ROUND OUTDOOR WALL CYLINDER

ORDERING INFORMATION

Model	Light Direction	Watts	CCT	Options	Finish	UPC		
ASD-OLCLR-1N930-BK	1	9 W	3,000 K	-	Black	810050732918		
ASD-OLCLR-1N940-BK	1	9 W	4,000 K	-	Black	810050732925		
ASD-OLCLR-1N950-BK	1	9 W	5,000 K	-	Black	810050732932		
ASD-OLCLR-1N930-BZ	1	9 W	3,000 K	-	Oil Rubbed Bronze	810050732949		
ASD-OLCLR-1N940-BZ	1	9 W	4,000 K	-	Oil Rubbed Bronze	810050732956		
ASD-OLCLR-1N950-BZ	1	9 W	5,000 K	-	Oil Rubbed Bronze	810050732963		
ASD-OLCLR-1N930-SS	1	9 W	3,000 K	-	Stainless Steel	810050731393		
ASD-OLCLR-1N950-SS	1	9 W	5,000 K	-	Stainless Steel	810050731409		
ASD-OLCLR-1N930-WH	1	9 W	3,000 K	-	White	810050733151		
ASD-OLCLR-1N950-WH	1	9 W	5,000 K	-	White	810050733168		
ASD-OLCLR-2N1830-BK	2	18 W	3,000 K	-	Black	810050732970		
ASD-OLCLR-2N1840-BK	2	18 W	4,000 K	-	Black	810050732987		
ASD-OLCLR-2N1850-BK	2	18 W	5,000 K	-	Black	810050732994		
ASD-OLCLR-2N1830-BZ	2	18 W	3,000 K	-	Oil Rubbed Bronze	810050733007		
ASD-OLCLR-2N1840-BZ	2	18 W	4,000 K	-	Oil Rubbed Bronze	810050733014		
ASD-OLCLR-2N1850-BZ	2	18 W	5,000 K	-	Oil Rubbed Bronze	810050733021		
ASD-OLCLR-2N1830-SS	2	18 W	3,000 K	-	Stainless Steel	810050731416		
ASD-OLCLR-2N1850-SS	2	18 W	5,000 K	-	Stainless Steel	810050731430		
ASD-OLCLR-2N1830-WH	2	18 W	3,000 K	-	White	810050733175		
ASD-OLCLR-2N1850-WH	2	18 W	5,000 K	-	White	810050733182		
ASD-OLCLR-MV-1N9CC-PC-BK	1	9 W	3,000/4,000/5,000 K	Photocell	Black	810050733038		
ASD-OLCLR-MV-1N9CC-PC-BZ	1	9 W	3,000/4,000/5,000 K	Photocell	Oil Rubbed Bronze	810050733045		
ASD-OLCLR-MV-2N18CC-PC-BK	2	18 W	3,000/4,000/5,000 K	Photocell	Black	810050733052		
ASD-OLCLR-MV-2N18CC-PC-BZ	2	18 W	3,000/4,000/5,000 K	Photocell	Oil Rubbed Bronze	810050733069		
Model	Pcs. in middle box	Middle box Size	Middle box Weight	GTIN 14 for Middle box	Pcs. per Carton	Carton Size	Carton Weight	GTIN 14 for Carton
ASD-OLCLR-1N930-BK	-	-	-	-	6	16.7" x 15.4" x 9.6"	16.7 lb	30810050732919
ASD-OLCLR-1N940-BK	2	11" x 7.7" x 9.4"	5.1 lb	10810050732922	6	23.8" x 11.6" x 10"	16.7 lb	20810050732929
ASD-OLCLR-1N950-BK	2	11" x 7.7" x 9.4"	5.1 lb	10810050732939	6	23.8" x 11.6" x 10"	16.7 lb	20810050732936
ASD-OLCLR-1N930-BZ	-	-	-	-	6	16.7" x 15.4" x 9.6"	16.7 lb	30810050732940
ASD-OLCLR-1N940-BZ	2	11" x 7.7" x 9.4"	5.1 lb	10810050732953	6	23.8" x 11.6" x 10"	16.7 lb	20810050732950
ASD-OLCLR-1N950-BZ	2	11" x 7.7" x 9.4"	5.1 lb	10810050732960	6	23.8" x 11.6" x 10"	16.7 lb	20810050732967
ASD-OLCLR-1N930-SS	2	11" x 7.7" x 9.4"	5.1 lb	10810050731390	6	23.8" x 11.6" x 10"	16.7 lb	20810050731397
ASD-OLCLR-1N950-SS	2	11" x 7.7" x 9.4"	5.1 lb	10810050731406	6	23.8" x 11.6" x 10"	16.7 lb	20810050731403
ASD-OLCLR-1N930-WH	2	11" x 7.7" x 9.4"	5.1 lb	10810050733158	6	23.8" x 11.6" x 10"	16.7 lb	20810050733155
ASD-OLCLR-1N950-WH	2	11" x 7.7" x 9.4"	5.1 lb	10810050733165	6	23.8" x 11.6" x 10"	16.7 lb	20810050733162
ASD-OLCLR-2N1830-BK	2	11" x 7.7" x 13.4"	6.7 lb	10810050732977	6	23.8" x 11.6" x 14"	21.7 lb	20810050732974
ASD-OLCLR-2N1840-BK	2	11" x 7.7" x 13.4"	6.7 lb	10810050732984	6	23.8" x 11.6" x 14"	21.7 lb	20810050732981
ASD-OLCLR-2N1850-BK	2	11" x 7.7" x 13.4"	6.7 lb	10810050732991	6	23.8" x 11.6" x 14"	21.7 lb	20810050732998
ASD-OLCLR-2N1830-BZ	2	11" x 7.7" x 13.4"	6.7 lb	10810050733004	6	23.8" x 11.6" x 14"	21.7 lb	20810050733001
ASD-OLCLR-2N1840-BZ	2	11" x 7.7" x 13.4"	6.7 lb	10810050733011	6	23.8" x 11.6" x 14"	21.7 lb	20810050733018
ASD-OLCLR-2N1850-BZ	2	11" x 7.7" x 13.4"	6.7 lb	10810050733028	6	23.8" x 11.6" x 14"	21.7 lb	20810050733025
ASD-OLCLR-2N1830-SS	2	11" x 7.7" x 13.4"	6.7 lb	10810050731413	6	23.8" x 11.6" x 14"	21.7 lb	20810050731410
ASD-OLCLR-2N1850-SS	2	11" x 7.7" x 13.4"	6.7 lb	10810050731437	6	23.8" x 11.6" x 14"	21.7 lb	20810050731434
ASD-OLCLR-2N1830-WH	2	11" x 7.7" x 13.4"	6.7 lb	10810050733172	6	23.8" x 11.6" x 14"	21.7 lb	20810050733179
ASD-OLCLR-2N1850-WH	2	11" x 7.7" x 13.4"	6.7 lb	10810050733189	6	23.8" x 11.6" x 14"	21.7 lb	20810050733186
ASD-OLCLR-MV-1N9CC-PC-BK	2	11" x 7.7" x 9.4"	5.1 lb	10810050733035	6	23.8" x 11.6" x 10"	16.7 lb	20810050733032
ASD-OLCLR-MV-1N9CC-PC-BZ	2	11" x 7.7" x 9.4"	5.1 lb	10810050733042	6	23.8" x 11.6" x 10"	16.7 lb	20810050733049
ASD-OLCLR-MV-2N18CC-PC-BK	2	11" x 7.7" x 13.4"	6.7 lb	10810050733059	6	23.8" x 11.6" x 14"	21.7 lb	20810050733056
ASD-OLCLR-MV-2N18CC-PC-BZ	2	11" x 7.7" x 13.4"	6.7 lb	10810050733066	6	23.8" x 11.6" x 14"	21.7 lb	20810050733063

For most up-to-date spec sheets please refer to asd-lighting.com

ASD LIGHTING CORP

E-mail: orders@asd-lighting.com | Web site: www.asd-lighting.com

