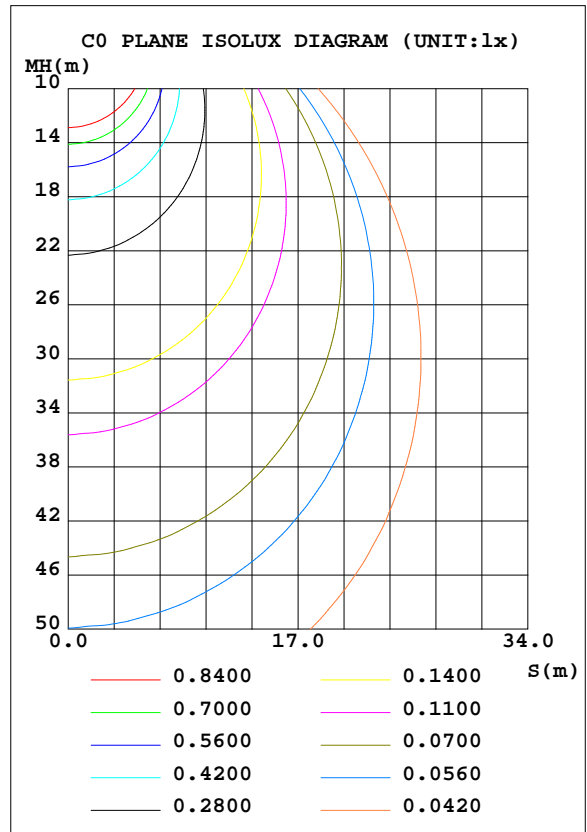
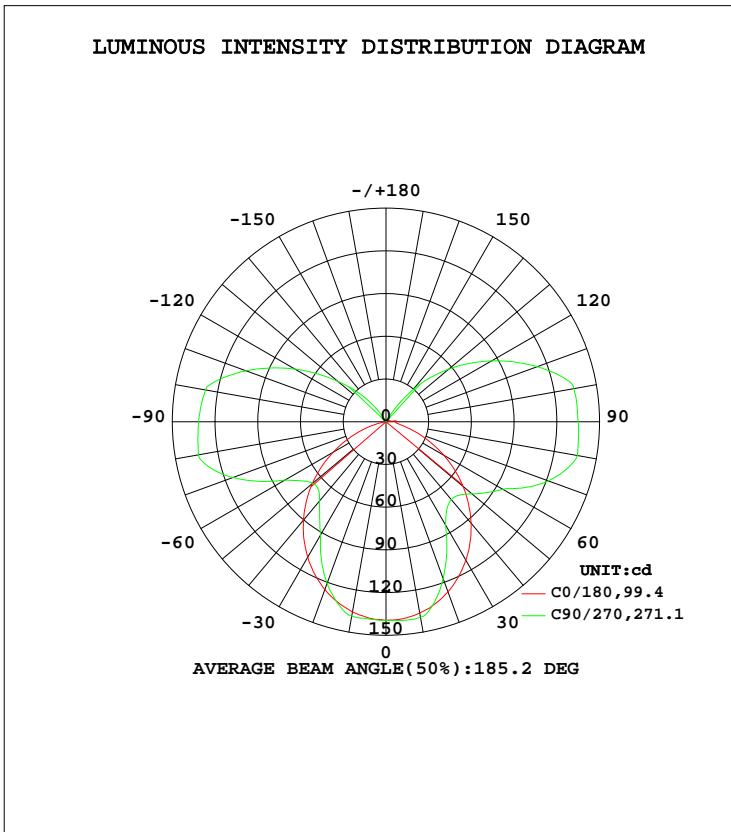


LUMINAIRE PHOTOMETRIC TEST REPORT

Test:U:120.03V I:0.0967A P:11.360W PF:0.9787 Freq:60.00Hz Lamp Flux:709.008x1 lm		
NAME: ASD-LWS24W-14D12CC-BK 5000K	TYPE:N/A	WEIGHT:N/A
SPEC.:N/A	DIM.: N/A	SERIAL No.:N/A
MFR.: ASD Lighting corp	SUR.:N/A	Shielding Angle:N/A

DATA OF LAMP		PHOTOMETRIC DATA			
MODEL	PSZ2S220516016-10	Imax(cd)	140.2	S/MH(C0/180)	1.20
NOMINAL POWER(W)		LOR(%)	100.0	S/MH(C90/270)	0.99
RATED VOLTAGE(V)	120	TOTAL FLUX(lm)	709.01	η UP, DN(C0-180)	15.2,33.2
NOMINAL FLUX(lm)	709.008	CIE CLASS	SEMI-D.	η UP, DN(C180-360)	17.2,34.4
LAMPS INSIDE	1	η up(%)	32.4	CIBSE SHR NOM	1.00
TEST VOLTAGE(V)	120	η down(%)	67.6	CIBSE SHR MAX	1.15



C Range: 0 - 360DEG
 C Interval: 22.5DEG
 Test Speed: HIGH
 Temperature:24.8DEG
 Operators:Hill
 Test Date:2022-05-21

γ Range: 0 - 180DEG
 γ Interval: 1.0DEG
 Test System:EVERFINE GO-R5000_V2 SYSTEM V2.0.351
 Humidity:40%
 Test Distance:2.526m [K=1.0000]
 Remarks:

ZONAL FLUX DIAGRAM

ZONAL FLUX DIAGRAM:

γ	C0	C45	C90	C135	C180	C225	C270	C315	γ	Φ zone	Φ total	%lum, lamp
10	135.7	137.1	138.6	137.7	136.4	138.6	139.4	137.8	0- 10	13.23	13.23	1.87,1.87
20	125.5	125.7	120.8	127.2	127.1	128.1	117.3	126.3	10- 20	37.37	50.60	7.14,7.14
30	109.8	102.2	92.00	104.0	112.2	100.3	83.79	98.54	20- 30	52.26	102.9	14.5,14.5
40	90.23	73.68	72.63	75.31	93.02	69.08	71.32	67.30	30- 40	55.74	158.6	22.4,22.4
50	67.50	54.64	67.20	56.11	70.61	56.36	78.79	53.31	40- 50	54.01	212.6	30,30
60	42.96	47.20	82.01	48.22	46.72	58.42	94.73	53.56	50- 60	53.54	266.1	37.5,37.5
70	19.30	57.86	114.4	57.99	23.97	69.41	121.4	62.48	60- 70	59.85	326.0	46,46
80	2.756	75.84	133.8	76.45	8.934	83.86	136.5	75.79	70- 80	73.20	399.2	56.3,56.3
90	0.0478	74.26	131.5	75.73	6.962	83.13	135.0	74.71	80- 90	79.83	479.0	67.6,67.6
100	0.0564	69.45	128.7	71.63	3.347	80.74	134.0	72.18	90-100	77.86	556.9	78.5,78.5
110	0.0646	50.27	104.7	51.72	2.385	62.55	113.0	55.24	100-110	66.08	623.0	87.9,87.9
120	0.0838	31.35	74.09	32.17	1.605	43.93	85.59	38.23	110-120	45.41	668.4	94.3,94.3
130	0.1214	14.77	44.32	15.11	1.032	24.28	57.61	20.50	120-130	26.36	694.7	98,98
140	0.1753	0.8436	19.67	1.373	0.6505	2.749	29.22	2.185	130-140	11.62	706.4	99.6,99.6
150	0.2540	0.5385	0.7316	0.8129	0.4034	0.8435	1.723	0.4305	140-150	2.291	708.6	99.9,99.9
160	0.3060	0.4971	0.5808	0.5975	0.2500	0.3894	0.4492	0.4730	150-160	0.2336	708.9	100,100
170	0.2880	0.3140	0.3704	0.3227	0.1783	0.2085	0.2671	0.2514	160-170	0.1061	709.0	100,100
180	0.2340	0.2200	0.2139	0.2233	0.2351	0.2317	0.2105	0.2123	170-180	0.0237	709.0	100,100
DEG	LUMINOUS INTENSITY:cd									UNIT:lm		

Conical surface Flux(90deg): 185.85 lm

%lum = 26.2%
%lamp = 26.2%

Conical surface Flux(120deg): 266.14 lm

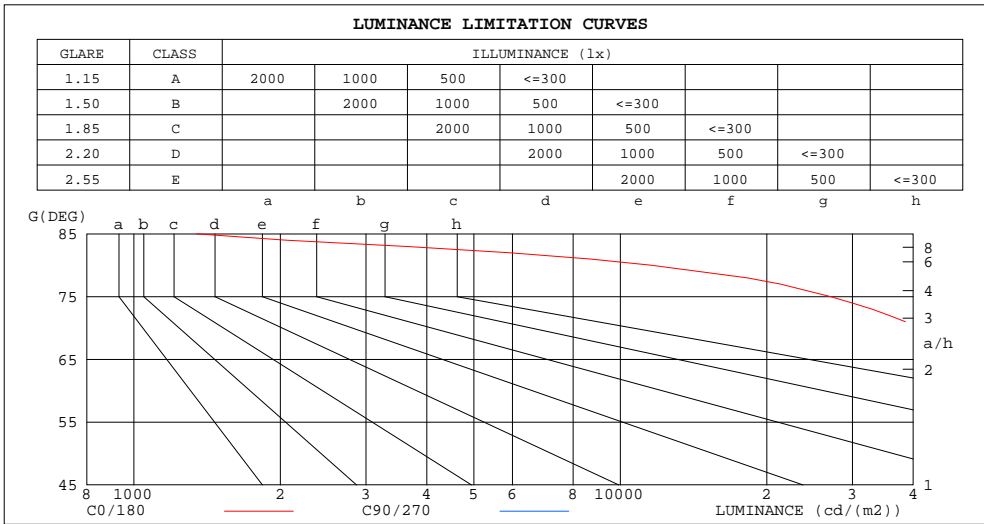
%lum = 37.5%
%lamp = 37.5%

C Range: 0 - 360DEG
C Interval: 22.5DEG
Test Speed: HIGH
Temperature:24.8DEG
Operators:Hill
Test Date:2022-05-21

γ Range: 0 - 180DEG
γ Interval: 1.0DEG
Test System:EVERFINE GO-R5000_V2 SYSTEM V2.0.351
Humidity:40%
Test Distance:2.526m [K=1.0000]
Remarks:

LUMINANCE LIMITATION CURVES

Test:U:120.03V I:0.0967A P:11.360W PF:0.9787 Freq:60.00Hz Lamp Flux:709.008x1 lm		
NAME: ASD-LWS24W-14D12CC-BK 5000K	TYPE:N/A	WEIGHT:N/A
SPEC.:N/A	DIM.: N/A	SERIAL No.:N/A
MFR.: ASD Lighting corp	SUR.:N/A	Shielding Angle:N/A



LUMINANCE cd/(m2)		
G(DEG)	C0/180	C90/270
85	1346	1113646
80	11569	563497
75	27034	358456
70	41133	244695
65	53033	171254
60	62636	119994
55	70336	92327
50	76558	76479
45	81636	69618

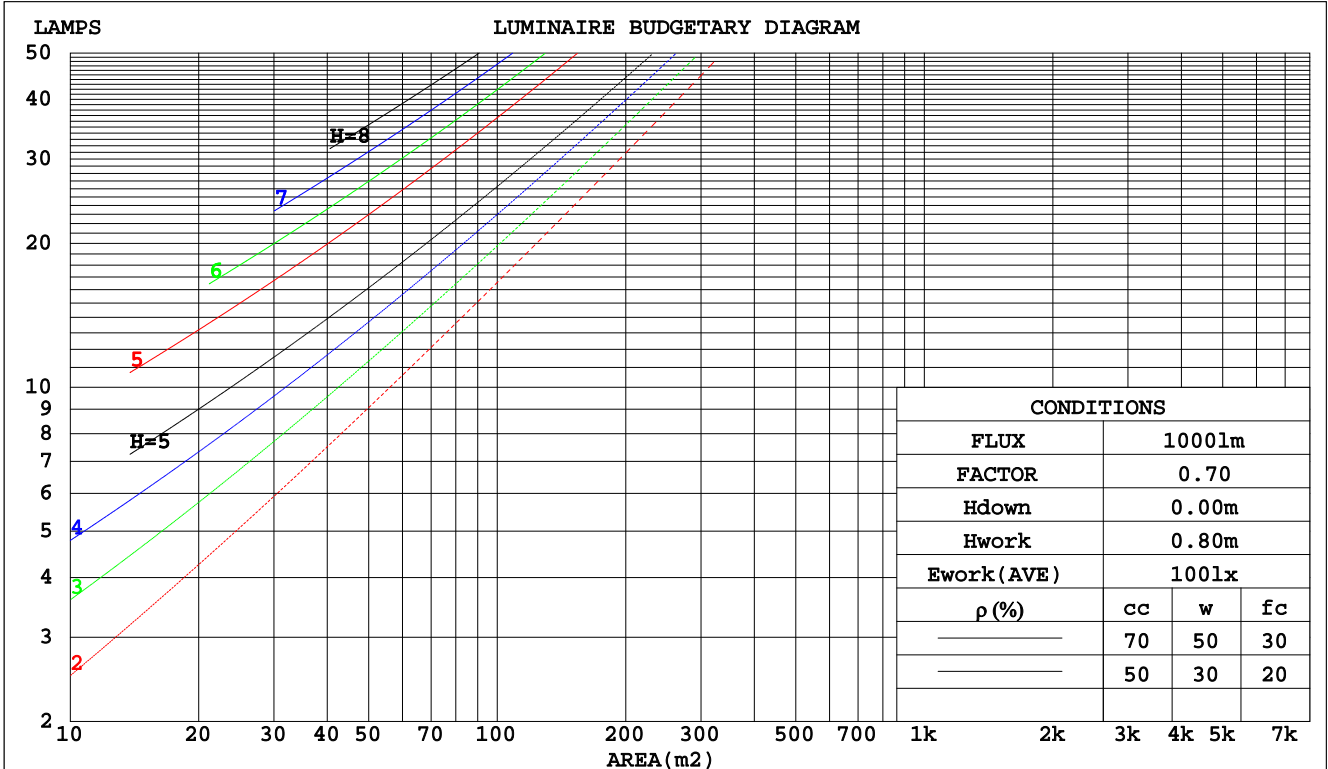
C Range: 0 - 360DEG
 C Interval: 22.5DEG
 Test Speed: HIGH
 Temperature:24.8DEG
 Operators:Hill
 Test Date:2022-05-21

γ Range: 0 - 180DEG
 γ Interval: 1.0DEG
 Test System:EVERFINE GO-R5000_V2 SYSTEM V2.0.351
 Humidity:40%
 Test Distance:2.526m [K=1.0000]
 Remarks:

CU AND LUMINAIRE BUDGETARY ESTIMATE DIAGRAM

Test:U:120.03V I:0.0967A P:11.360W PF:0.9787 Freq:60.00Hz Lamp Flux:709.008x1 lm		
NAME: ASD-LWS24W-14D12CC-BK 5000K	TYPE:N/A	WEIGHT:N/A
SPEC.:N/A	DIM.: N/A	SERIAL No.:N/A
MFR.: ASD Lighting corp	SUR.:N/A	Shielding Angle:N/A

pcc	80%			70%			50%			30%			10%			0
	50%	30%	10%	50%	30%	10%	50%	30%	10%	50%	30%	10%	50%	30%	10%	0
pw																0
pfc	20%			20%			20%			20%			20%			0
RCR	RCR:Room Cavity Ratio Coefficients of Utilization(CU)															
0.0	1.11	1.11	1.11	1.05	1.05	1.05	.93	.93	.93	.82	.82	.82	.72	.72	.72	.68
1.0	.90	.84	.79	.85	.79	.75	.74	.70	.66	.65	.62	.59	.56	.54	.51	.47
2.0	.77	.69	.62	.72	.65	.59	.63	.57	.52	.55	.50	.46	.47	.44	.40	.36
3.0	.67	.58	.50	.63	.54	.48	.55	.48	.43	.48	.42	.38	.41	.37	.33	.30
4.0	.59	.49	.42	.55	.47	.40	.49	.42	.36	.42	.37	.32	.37	.32	.28	.25
5.0	.52	.43	.36	.49	.41	.34	.43	.36	.31	.38	.32	.28	.33	.28	.24	.21
6.0	.47	.38	.31	.44	.36	.30	.39	.32	.27	.34	.29	.24	.30	.25	.21	.19
7.0	.43	.34	.27	.40	.32	.26	.36	.29	.24	.31	.26	.21	.28	.23	.19	.17
8.0	.39	.30	.24	.37	.29	.23	.33	.26	.21	.29	.23	.19	.25	.21	.17	.15
9.0	.35	.27	.22	.34	.26	.21	.30	.24	.19	.27	.21	.17	.24	.19	.16	.13
10.0	.33	.25	.20	.31	.24	.19	.28	.22	.17	.25	.19	.16	.22	.17	.14	.12



C Range: 0 - 360DEG
 C Interval: 22.5DEG
 Test Speed: HIGH
 Temperature:24.8DEG
 Operators:Hill
 Test Date:2022-05-21

γ Range: 0 - 180DEG
 γ Interval: 1.0DEG
 Test System:EVERFINE GO-R5000_V2 SYSTEM V2.0.351
 Humidity:40%
 Test Distance:2.526m [K=1.0000]
 Remarks:

WEC AND CCEC

Test:U:120.03V I:0.0967A P:11.360W PF:0.9787 Freq:60.00Hz Lamp Flux:709.008x1 lm					
NAME: ASD-LWS24W-14D12CC-BK 5000K			TYPE:N/A		WEIGHT:N/A
SPEC.:N/A			DIM.: N/A		SERIAL No.:N/A
MFR.: ASD Lighting corp			SUR.:N/A		Shielding Angle:N/A

ρcc	80%			70%			50%			30%			10%			0
ρw	50%	30%	10%	50%	30%	10%	50%	30%	10%	50%	30%	10%	50%	30%	10%	0
ρfc	20%			20%			20%			20%			20%			0
RCR	RCR:Room Cavity Ratio						Wall Exitance Coefficients(WEC)									
0.0																
1.0	.422	.240	.076	.405	.231	.073	.372	.214	.068	.343	.198	.063	.316	.183	.059	
2.0	.347	.190	.058	.331	.183	.056	.302	.168	.052	.275	.154	.048	.250	.142	.045	
3.0	.300	.160	.048	.286	.153	.046	.260	.141	.043	.235	.129	.040	.212	.118	.036	
4.0	.266	.138	.041	.254	.133	.039	.229	.122	.036	.207	.111	.034	.186	.101	.031	
5.0	.240	.122	.035	.228	.117	.034	.206	.107	.032	.185	.098	.029	.166	.089	.027	
6.0	.219	.110	.031	.208	.105	.030	.187	.096	.028	.168	.088	.026	.151	.079	.024	
7.0	.201	.099	.028	.191	.095	.027	.172	.087	.025	.155	.079	.023	.138	.072	.021	
8.0	.186	.091	.025	.177	.087	.025	.159	.080	.023	.143	.072	.021	.128	.066	.019	
9.0	.173	.084	.023	.164	.080	.022	.148	.073	.021	.133	.067	.019	.119	.060	.017	
10.0	.161	.077	.021	.154	.074	.021	.139	.068	.019	.124	.062	.018	.111	.056	.016	

ρcc	80%			70%			50%			30%			10%			0
ρw	50%	30%	10%	50%	30%	10%	50%	30%	10%	50%	30%	10%	50%	30%	10%	0
ρfc	20%			20%			20%			20%			20%			0
RCR	RCR:Room Cavity Ratio						Ceiling Cavity Exitance Coefficients(CCEC)									
0.0	.438	.438	.438	.374	.374	.374	.255	.255	.255	.147	.147	.147	.047	.047	.047	
1.0	.437	.404	.375	.374	.347	.322	.256	.239	.223	.147	.138	.130	.047	.044	.042	
2.0	.430	.383	.342	.369	.329	.296	.253	.228	.206	.146	.133	.121	.047	.043	.039	
3.0	.423	.367	.322	.362	.316	.279	.249	.220	.196	.144	.128	.115	.046	.042	.038	
4.0	.414	.355	.309	.356	.306	.268	.245	.214	.189	.141	.125	.112	.046	.041	.037	
5.0	.406	.345	.300	.349	.299	.261	.240	.209	.184	.139	.122	.109	.045	.040	.036	
6.0	.399	.337	.293	.343	.292	.256	.237	.205	.181	.137	.120	.107	.044	.039	.035	
7.0	.392	.331	.289	.337	.287	.251	.233	.201	.178	.135	.119	.106	.044	.039	.035	
8.0	.385	.326	.285	.331	.282	.248	.229	.198	.176	.133	.117	.105	.043	.038	.035	
9.0	.379	.321	.282	.326	.279	.246	.226	.196	.175	.132	.116	.104	.043	.038	.034	
10.0	.373	.317	.280	.322	.275	.244	.223	.194	.173	.130	.114	.103	.042	.038	.034	

C Range: 0 - 360DEG
 C Interval: 22.5DEG
 Test Speed: HIGH
 Temperature:24.8DEG
 Operators:Hill
 Test Date:2022-05-21

γ Range: 0 - 180DEG
 γ Interval: 1.0DEG
 Test System:EVERFINE GO-R5000_V2 SYSTEM V2.0.351
 Humidity:40%
 Test Distance:2.526m [K=1.0000]
 Remarks:

UGR(Unified Glare Rating) Table

Test:U:120.03V I:0.0967A P:11.360W PF:0.9787 Freq:60.00Hz Lamp Flux:709.008x1 lm										
NAME: ASD-LWS24W-14D12CC-BK 5000K					TYPE:N/A			WEIGHT:N/A		
SPEC.:N/A					DIM.: N/A			SERIAL No.:N/A		
MFR.: ASD Lighting corp					SUR.:N/A			Shielding Angle:N/A		
ceiling/cavity	0.7	0.7	0.5	0.5	0.3	0.7	0.7	0.5	0.5	0.3
walls	0.5	0.3	0.5	0.3	0.3	0.5	0.3	0.5	0.3	0.3
working plane	0.2	0.2	0.2	0.2	0.2	0.2	0.2	0.2	0.2	0.2
Room dimensions	Viewed crosswise					Viewed endwise				
x = 2H y = 2H	24.6	25.8	25.3	26.5	27.4	27.7	28.9	28.3	29.6	30.4
3H	25.5	26.6	26.2	27.3	28.2	32.6	33.7	33.3	34.4	35.3
4H	25.8	26.8	26.5	27.6	28.5	35.2	36.3	36.0	37.1	38.0
6H	25.9	27.0	26.7	27.7	28.6	38.0	39.0	38.8	39.8	40.7
8H	26.0	27.0	26.7	27.7	28.7	39.4	40.4	40.1	41.1	42.1
12H	26.0	26.9	26.7	27.7	28.6	40.9	41.8	41.6	42.6	43.5
4H 2H	25.8	26.9	26.5	27.6	28.5	28.1	29.2	28.8	29.9	30.8
3H	27.2	28.1	27.9	28.9	29.8	33.3	34.3	34.1	35.1	36.0
4H	27.7	28.6	28.5	29.4	30.3	36.3	37.1	37.0	37.9	38.9
6H	28.2	29.0	29.0	29.8	30.8	39.3	40.0	40.1	40.9	41.9
8H	28.4	29.1	29.2	30.0	31.0	40.8	41.5	41.6	42.3	43.3
12H	28.6	29.2	29.4	30.1	31.1	42.4	43.1	43.2	43.9	44.9
8H 4H	31.0	31.7	31.8	32.5	33.6	36.6	37.3	37.4	38.1	39.1
6H	32.1	32.7	33.0	33.6	34.7	39.9	40.5	40.7	41.4	42.4
8H	32.6	33.1	33.4	34.0	35.1	41.7	42.2	42.5	43.1	44.2
12H	32.9	33.4	33.8	34.3	35.4	43.6	44.1	44.4	44.9	46.0
12H 4H	32.3	32.9	33.1	33.8	34.8	36.6	37.2	37.4	38.1	39.1
6H	33.9	34.4	34.7	35.3	36.4	40.0	40.6	40.9	41.4	42.5
8H	34.6	35.1	35.5	36.0	37.1	41.9	42.4	42.7	43.2	44.3
Variations with the observer position at spacings:										
S = 1.0H	+ 0.1 / - 0.1					+ 0.1 / - 0.1				
1.5H	+ 0.1 / - 0.1					+ 0.2 / - 0.3				
2.0H	+ 0.2 / - 0.2					+ 0.3 / - 0.3				

CIE Pub.117, 709.0 lm Total Lamp Luminous Flux Correct (8log(F/F0) = -1.2)

C Range: 0 - 360DEG
 C Interval: 22.5DEG
 Test Speed: HIGH
 Temperature:24.8DEG
 Operators:Hill
 Test Date:2022-05-21

γ Range: 0 - 180DEG
 γ Interval: 1.0DEG
 Test System:EVERFINE GO-R5000_V2 SYSTEM V2.0.351
 Humidity:40%
 Test Distance:2.526m [K=1.0000]
 Remarks:

UTILIZATION FACTORS TABLE

Test:U:120.03V I:0.0967A P:11.360W PF:0.9787 Freq:60.00Hz Lamp Flux:709.008x1 lm		
NAME: ASD-LWS24W-14D12CC-BK 5000K	TYPE:N/A	WEIGHT:N/A
SPEC.:N/A	DIM.: N/A	SERIAL No.:N/A
MFR.: ASD Lighting corp	SUR.:N/A	Shielding Angle:N/A

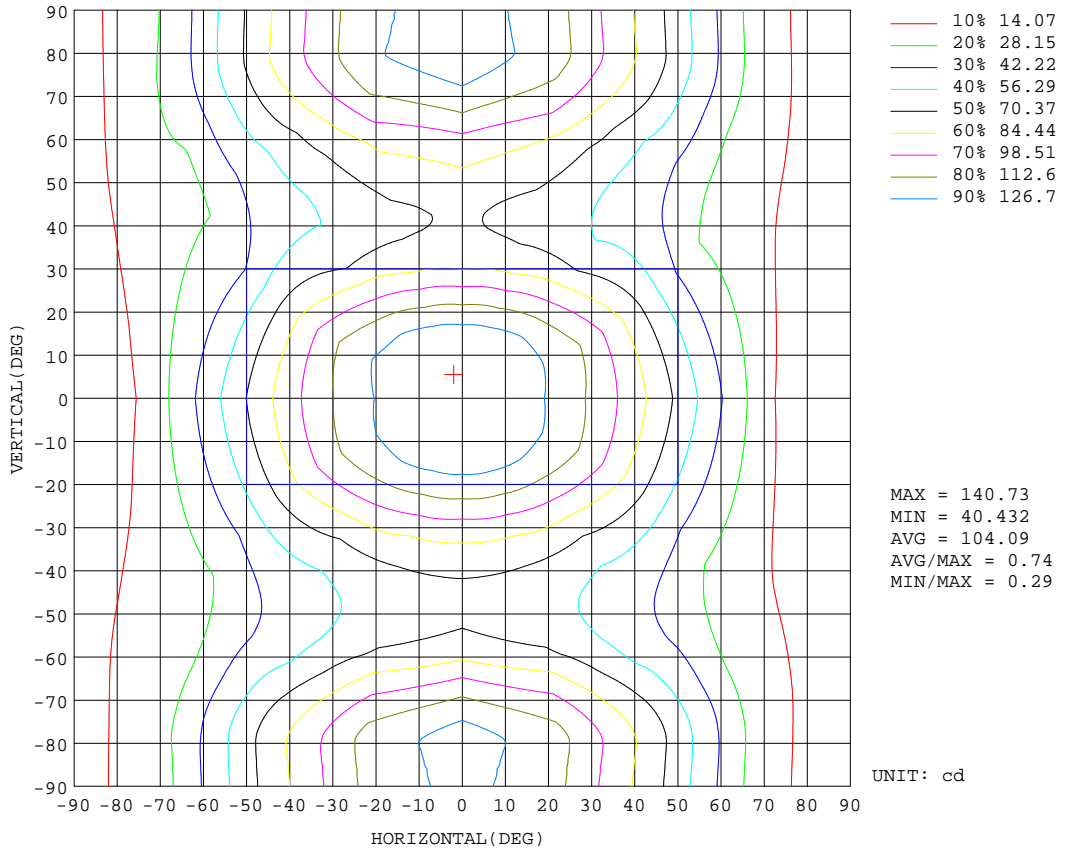
REFLECTANCE										
Ceiling	0.8	0.8	0.8	0.7	0.7	0.7	0.5	0.5	0.5	0
Walls	0.7	0.5	0.3	0.7	0.5	0.3	0.7	0.5	0.3	0
Working plane	0.2	0.2	0.2	0.2	0.2	0.2	0.2	0.2	0.2	0
ROOM INDEX	UTILIZATION FACTORS(PERCENT) $k(RI) \times RCR = 5$									
k = 0.60	44	31	24	42	31	24	40	29	23	17
0.80	52	38	30	50	37	30	47	36	29	21
1.00	59	45	36	56	44	35	52	43	34	25
1.25	65	51	42	62	50	41	57	46	39	28
1.50	70	57	47	67	54	46	61	50	43	31
2.00	77	65	55	73	62	53	66	57	50	36
2.50	82	70	61	77	67	59	69	61	54	39
3.00	86	75	66	81	71	63	72	65	58	41
4.00	91	81	73	85	77	70	76	69	64	45
5.00	94	85	78	88	81	75	79	73	68	48
ROOM INDEX	UF(total)									Direct
According to DIN EN 13032-2 2004			Suspended				SHRNOM = 1.25			

C Range: 0 - 360DEG
 C Interval: 22.5DEG
 Test Speed: HIGH
 Temperature:24.8DEG
 Operators:Hill
 Test Date:2022-05-21

γ Range: 0 - 180DEG
 γ Interval: 1.0DEG
 Test System:EVERFINE GO-R5000_V2 SYSTEM V2.0.351
 Humidity:40%
 Test Distance:2.526m [K=1.0000]
 Remarks:

ISOCANDELA DIAGRAM

Test:U:120.03V I:0.0967A P:11.360W PF:0.9787 Freq:60.00Hz Lamp Flux:709.008x1 lm		
NAME: ASD-LWS24W-14D12CC-BK 5000K	TYPE:N/A	WEIGHT:N/A
SPEC.:N/A	DIM.: N/A	SERIAL No.:N/A
MFR.: ASD Lighting corp	SUR.:N/A	Shielding Angle:N/A

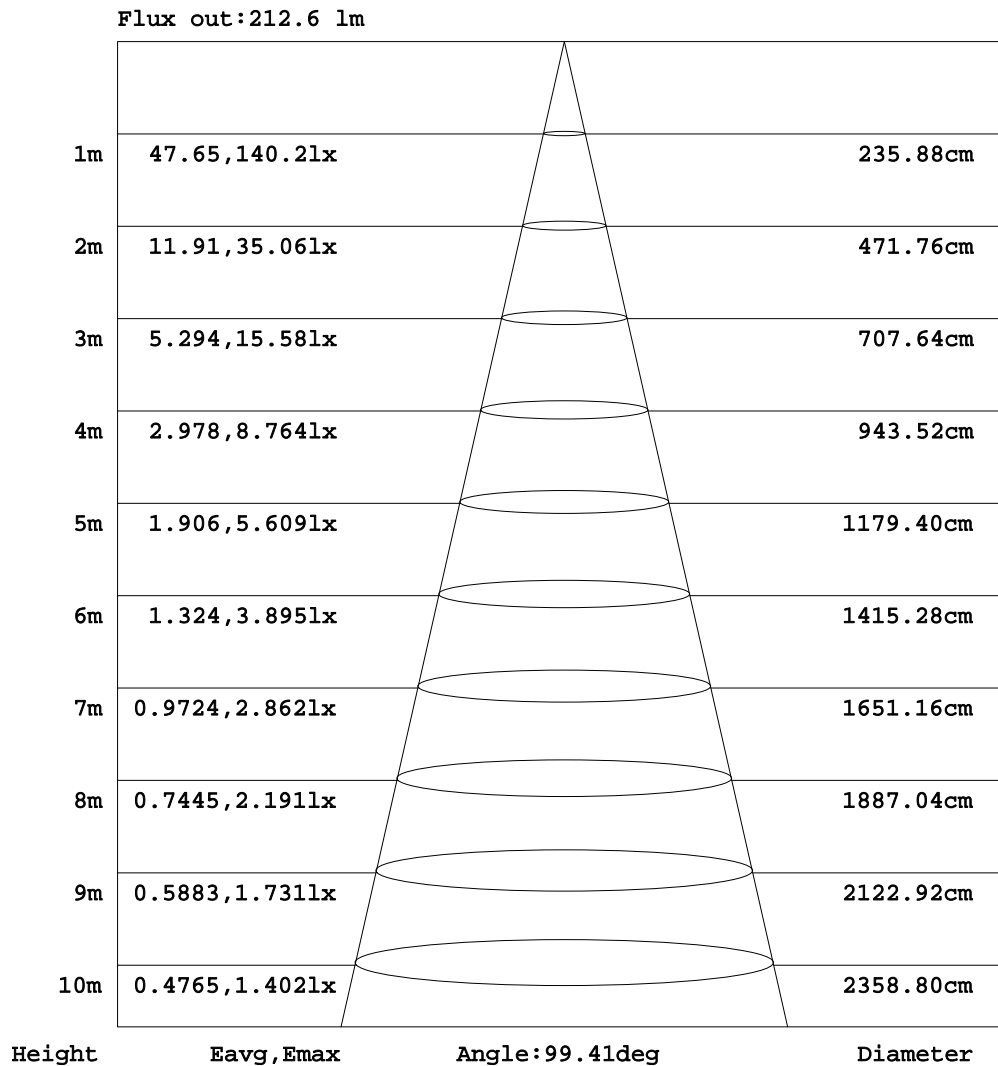


C Range: 0 - 360DEG
 C Interval: 22.5DEG
 Test Speed: HIGH
 Temperature:24.8DEG
 Operators:Hill
 Test Date:2022-05-21

γ Range: 0 - 180DEG
 γ Interval: 1.0DEG
 Test System:EVERFINE GO-R5000_V2 SYSTEM V2.0.351
 Humidity:40%
 Test Distance:2.526m [K=1.0000]
 Remarks:

AAI Figure

Test:U:120.03V I:0.0967A P:11.360W PF:0.9787 Freq:60.00Hz Lamp Flux:709.008x1 lm		
NAME: ASD-LWS24W-14D12CC-BK 5000K	TYPE:N/A	WEIGHT:N/A
SPEC.:N/A	DIM.: N/A	SERIAL No.:N/A
MFR.: ASD Lighting corp	SUR.:N/A	Shielding Angle:N/A



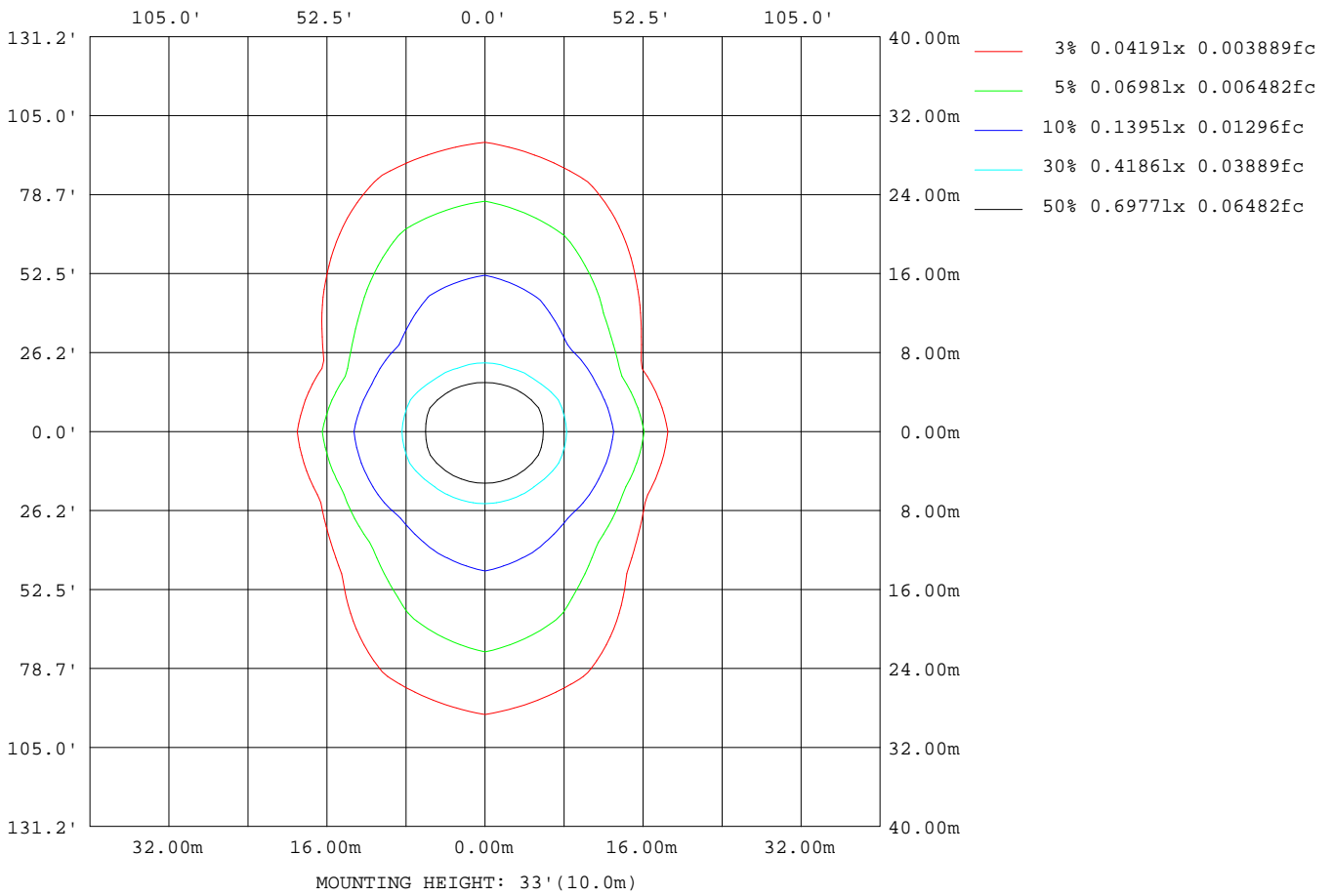
Note:The Curves indicate the illuminated area and the average illumination when the luminaire is at different distance.

C Range: 0 - 360DEG
 C Interval: 22.5DEG
 Test Speed: HIGH
 Temperature:24.8DEG
 Operators:Hill
 Test Date:2022-05-21

γ Range: 0 - 180DEG
 γ Interval: 1.0DEG
 Test System:EVERFINE GO-R5000_V2 SYSTEM V2.0.351
 Humidity:40%
 Test Distance:2.526m [K=1.0000]
 Remarks:

ISOLUX DIAGRAM

Test:U:120.03V I:0.0967A P:11.360W PF:0.9787 Freq:60.00Hz Lamp Flux:709.008x1 lm		
NAME: ASD-LWS24W-14D12CC-BK 5000K	TYPE:N/A	WEIGHT:N/A
SPEC.:N/A	DIM.: N/A	SERIAL No.:N/A
MFR.: ASD Lighting corp	SUR.:N/A	Shielding Angle:N/A



C Range: 0 - 360DEG
 C Interval: 22.5DEG
 Test Speed: HIGH
 Temperature:24.8DEG
 Operators:Hill
 Test Date:2022-05-21

γ Range: 0 - 180DEG
 γ Interval: 1.0DEG
 Test System:EVERFINE GO-R5000_V2 SYSTEM V2.0.351
 Humidity:40%
 Test Distance:2.526m [K=1.0000]
 Remarks:

LED Avg.L Report

Test:U:120.03V I:0.0967A P:11.360W PF:0.9787 Freq:60.00Hz Lamp Flux:709.008x1 lm		
NAME: ASD-LWS24W-14D12CC-BK 5000K	TYPE:N/A	WEIGHT:N/A
SPEC.:N/A	DIM.: N/A	SERIAL No.:N/A
MFR.: ASD Lighting corp	SUR.:N/A	Shielding Angle:N/A

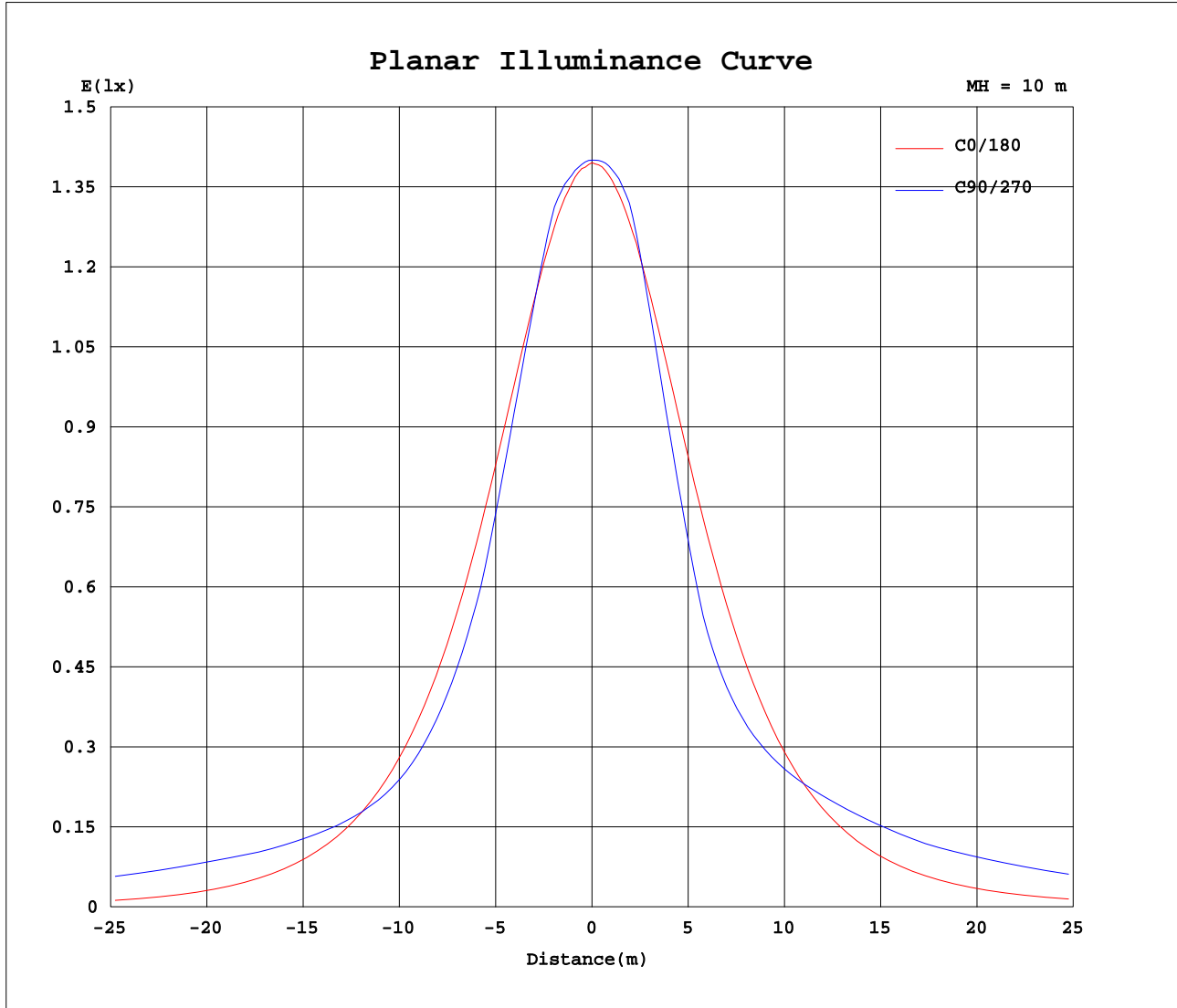
AvgL	cd/m2
L_0~180(65)av	56612
L_0~180(75)av	34457
L_0~180(85)av	30530
L_90~270(65)av	179268
L_90~270(75)av	362362
L_90~270(85)av	1122030
L_45(65)av	94336
L_45(75)av	200885
L_45(85)av	654751

Standard: GB/T 29293-2012

C Range: 0 - 360DEG
 C Interval: 22.5DEG
 Test Speed: HIGH
 Temperature:24.8DEG
 Operators:Hill
 Test Date:2022-05-21

γ Range: 0 - 180DEG
 γ Interval: 1.0DEG
 Test System:EVERFINE GO-R5000_V2 SYSTEM V2.0.351
 Humidity:40%
 Test Distance:2.526m [K=1.0000]
 Remarks:

Planar Illuminance Curve



C Range: 0 - 360DEG
 C Interval: 22.5DEG
 Test Speed: HIGH
 Temperature: 24.8DEG
 Operators: Hill
 Test Date: 2022-05-21

γ Range: 0 - 180DEG
 γ Interval: 1.0DEG
 Test System: EVERFINE GO-R5000_V2 SYSTEM V2.0.351
 Humidity: 40%
 Test Distance: 2.526m [K=1.0000]
 Remarks:

LUMINOUS DISTRIBUTION INTENSITY DATA

Test:U:120.03V I:0.0967A P:11.360W PF:0.9787 Freq:60.00Hz Lamp Flux:709.008x1 lm		
NAME: ASD-LWS24W-14D12CC-BK 5000K	TYPE:N/A	WEIGHT:N/A
SPEC.:N/A	DIM.: N/A	SERIAL No.:N/A
MFR.: ASD Lighting corp	SUR.:N/A	Shielding Angle:N/A

Table--1

UNIT: cd

C(DEG) γ (DEG)	0	22.5	45	67.5	90	112.5	135	157.5	180	202.5	225	247.5	270	292.5	315	337.5			
0	140	140	140	140	140	140	140	140	140	140	140	140	140	140	140	140			
5	138	138	139	139	139	139	139	139	139	139	139	140	140	140	139	139			
10	136	136	137	138	139	138	138	137	136	137	139	139	139	139	138	136			
15	131	132	134	132	132	133	135	134	133	134	137	133	131	133	135	132			
20	125	127	126	122	121	123	127	129	127	130	128	120	117	120	126	127			
25	118	121	115	109	107	110	117	123	120	124	115	105	101	104	113	121			
30	110	111	102	94.4	92.0	95.1	104	114	112	115	100	88.0	83.8	87.4	98.5	112			
35	101	100.0	87.9	81.6	81.3	82.4	90.0	103	103	103	84.4	75.0	74.7	74.5	82.7	100			
40	90.2	87.5	73.7	72.0	72.6	72.7	75.3	90.6	93.0	89.5	69.1	69.3	71.3	68.4	67.3	86.8			
45	79.2	74.3	63.1	64.9	67.3	65.5	64.7	77.7	82.1	74.8	60.5	68.4	72.9	67.1	58.2	72.3			
50	67.5	60.7	54.6	61.8	67.2	62.4	56.1	64.2	70.6	59.9	56.4	71.8	78.8	69.9	53.3	57.6			
55	55.3	46.8	48.9	63.7	72.4	64.3	50.2	50.5	58.8	45.8	55.9	78.1	86.7	75.6	52.0	43.5			
60	43.0	35.6	47.2	70.5	82.0	70.7	48.2	38.6	46.7	35.4	58.4	85.2	94.7	82.0	53.6	31.9			
65	30.7	26.8	49.6	83.4	98.9	83.5	50.3	29.9	34.9	29.6	62.3	96.0	109	92.0	56.6	24.9			
70	19.3	21.1	57.9	98.0	114	98.0	58.0	24.1	24.0	27.3	69.4	108	121	104	62.5	21.4			
75	9.60	19.4	68.1	110	127	110	68.6	22.3	14.9	27.8	78.1	117	131	112	70.6	20.9			
80	2.76	22.8	75.8	117	134	118	76.4	25.6	8.93	31.1	83.9	124	137	118	75.8	23.3			
85	0.16	25.2	76.0	116	133	117	77.1	28.6	7.14	32.7	84.0	123	136	117	76.1	24.6			
90	0.05	23.1	74.3	115	132	116	75.7	27.1	6.96	31.2	83.1	122	135	117	74.7	22.8			
95	0.05	22.1	72.7	113	130	114	74.6	27.0	7.37	31.2	83.1	122	135	116	74.5	22.5			
100	0.06	18.5	69.5	112	129	113	71.6	23.4	3.35	27.7	80.7	121	134	116	72.2	19.2			
105	0.06	14.0	60.1	101	119	103	62.0	18.6	2.82	23.5	71.8	112	126	107	63.9	15.5			
110	0.06	9.85	50.3	88.3	105	89.4	51.7	13.8	2.39	19.0	62.6	100	113	95.3	55.2	11.7			
115	0.07	5.76	40.6	74.7	89.6	75.4	41.7	9.02	1.97	13.6	53.1	87.6	99.5	83.2	46.6	7.37			
120	0.08	1.61	31.3	61.0	74.1	61.6	32.2	4.49	1.60	7.25	43.9	74.7	85.6	70.9	38.2	2.22			
125	0.10	0.47	22.9	48.0	58.7	48.2	23.5	2.88	1.29	3.19	34.4	61.9	71.5	58.7	29.6	0.42			
130	0.12	0.39	14.8	35.7	44.3	35.8	15.1	2.25	1.03	2.50	24.3	49.0	57.6	46.5	20.5	0.37			
135	0.14	0.41	6.39	24.6	31.6	24.5	6.53	1.83	0.82	1.98	12.5	35.8	43.6	34.2	10.1	0.38			
140	0.18	0.44	0.84	13.6	19.7	13.5	1.37	1.52	0.65	1.43	2.75	21.4	29.2	21.0	2.18	0.39			
145	0.22	0.41	0.54	3.05	7.71	3.04	0.94	1.23	0.51	0.86	1.01	5.84	13.5	7.50	0.47	0.40			
150	0.25	0.41	0.54	0.63	0.73	0.65	0.81	0.97	0.40	0.48	0.84	0.58	1.72	0.61	0.43	0.35			
155	0.29	0.37	0.56	0.56	0.55	0.57	0.74	0.71	0.32	0.29	0.63	0.52	0.45	0.45	0.46	0.35			
160	0.31	0.36	0.50	0.58	0.58	0.58	0.60	0.53	0.25	0.24	0.39	0.50	0.45	0.47	0.47	0.35			
165	0.30	0.33	0.41	0.47	0.50	0.48	0.44	0.40	0.21	0.21	0.23	0.34	0.38	0.39	0.36	0.27			
170	0.29	0.31	0.31	0.35	0.37	0.35	0.32	0.32	0.18	0.18	0.21	0.21	0.27	0.29	0.25	0.22			
175	0.26	0.26	0.26	0.27	0.28	0.28	0.27	0.27	0.20	0.20	0.21	0.20	0.20	0.21	0.21	0.20			
180	0.23	0.23	0.22	0.21	0.21	0.21	0.22	0.24	0.24	0.24	0.23	0.22	0.21	0.22	0.21	0.22			

C Range: 0 - 360DEG
 C Interval: 22.5DEG
 Test Speed: HIGH
 Temperature:24.8DEG
 Operators:Hill
 Test Date:2022-05-21

γ Range: 0 - 180DEG
 γ Interval: 1.0DEG
 Test System:EVERFINE GO-R5000_V2 SYSTEM V2.0.351
 Humidity:40%
 Test Distance:2.526m [K=1.0000]
 Remarks: