



LED UNDER CABINET LIGHT

► **DESIGN & OPTIONS** - LED UNDER CABINET LIGHT with a CRI 90+ is perfect for a hidden backlight. They have smooth dimming capabilities ranging from 100% to 10% with modern LED dimmers, and the Hi/Low switch provides 100% and 50% brightness levels. This fixture is also color selectable letting you go from 2,700K, to 3,000K, to 4,000K with a simple switch. It comes in 9", 12", 18", 24", 32", 40" and 48" sizes with a WHITE or BRONZE finish.

Models UCS swivel with 50° rotating lens are perfect for directional lighting.

► **INSTALLATION** - Common installation methods for this fixture include: hardwire or plug-in, linking multiple lights together or installing them separately. For your convenience we provide a 6" power cord, 6" linking cord, end-to-end connector, romex connector and screws. Refer to install instructions for detailed steps.

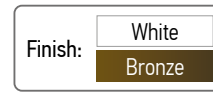
► **APPLICATION** - These LED UNDER CABINET LIGHTS are an ideal maintenance-free solution for residential and commercial installations. It creates a cozy ambience that is great for your family room, bedroom, cabinet or any other common area in your living space. It is also suitable for damp locations, making it perfect for kitchens as well. You could also use it as a complimentary light to an already existing main light.

► **ENERGY SAVINGS & EFFICIENCY** - With a lifespan of 50,000 hours, these fixtures are made to last decades under normal operation! This fixture can cut your electric bill by up to 80% instantly and will save you a significant amount of money in its lifetime.

► **CERTIFICATION & WARRANTY** - Buy with confidence: ASD provides a 5-year limited warranty along with ETL certification to guarantee top quality products and safety!

Energy Star classification allow participation in rebates; please check the rebate programs available in your state.

| | |
|----------------|--|
| Catalog number | |
| Notes | |
| Type | |



| Model | Size | Watts | Voltage | Dimmable | Lumens | CCT | Finish | Dimensions (LxWxH) |
|--------------------|---------|-------|---------|----------|----------------------|----------------------------|--------|----------------------------|
| UCL LINEAR | | | | | | | | |
| ASD-UCL-9D3CC-WH | 9 inch | 3W | 120 V | TRIAC | 170/207/214 lm | 3CCT (2,700/3,000/4,000 K) | White | 9" x 3-5/8" x 15/16" |
| ASD-UCL-12D5CC-WH | 12 inch | 5W | 120 V | TRIAC | 297/395/406 lm | 3CCT (2,700/3,000/4,000 K) | White | 12" x 3-5/8" x 15/16" |
| ASD-UCL-18D8CC-WH | 18 inch | 8W | 120 V | TRIAC | 480/533/548 lm | 3CCT (2,700/3,000/4,000 K) | White | 18" x 3-5/8" x 15/16" |
| ASD-UCL-24D12CC-WH | 24 inch | 12W | 120 V | TRIAC | 758/854/874 lm | 3CCT (2,700/3,000/4,000 K) | White | 24" x 3-5/8" x 15/16" |
| ASD-UCL-32D16CC-WH | 32 inch | 16W | 120 V | TRIAC | 1,084/1,104/1,131 lm | 3CCT (2,700/3,000/4,000 K) | White | 32" x 3-5/8" x 15/16" |
| ASD-UCL-40D20CC-WH | 40 inch | 20W | 120 V | TRIAC | 1,437/1,477/1,532 lm | 3CCT (2,700/3,000/4,000 K) | White | 40" x 3-5/8" x 15/16" |
| ASD-UCL-48D24CC-WH | 48 inch | 24W | 120 V | TRIAC | 1,710/1,650/1,781 lm | 3CCT (2,700/3,000/4,000 K) | White | 48" x 3-5/8" x 15/16" |
| UCS SWIVEL | | | | | | | | |
| ASD-UCS-9D3CC-WH | 9 inch | 3W | 120 V | TRIAC | 226/240/247 lm | 3CCT (2,700/3,000/4,000 K) | White | 9" x 3-5/8" x 15/16" |
| ASD-UCS-12D5CC-WH | 12 inch | 5W | 120 V | TRIAC | 350/314/317 lm | 3CCT (2,700/3,000/4,000 K) | White | 12" x 3-5/8" x 15/16" |
| ASD-UCS-12D5CC-BZ | 12 inch | 5W | 120 V | TRIAC | 350/314/317 lm | 3CCT (2,700/3,000/4,000 K) | Bronze | 12" x 3-5/8" x 15/16" |
| ASD-UCS-18D8CC-WH | 18 inch | 8W | 120 V | TRIAC | 560/484/488 lm | 3CCT (2,700/3,000/4,000 K) | White | 18" x 3-5/8" x 15/16" |
| ASD-UCS-18D8CC-BZ | 18 inch | 8W | 120 V | TRIAC | 560/484/488 lm | 3CCT (2,700/3,000/4,000 K) | Bronze | 18" x 3-5/8" x 15/16" |
| ASD-UCS-24D12CC-WH | 24 inch | 12W | 120 V | TRIAC | 850/610/747 lm | 3CCT (2,700/3,000/4,000 K) | White | 24" x 3-5/8" x 15/16" |
| ASD-UCS-24D12CC-BZ | 24 inch | 12W | 120 V | TRIAC | 850/610/747 lm | 3CCT (2,700/3,000/4,000 K) | Bronze | 24" x 3-5/8" x 15/16" |
| ASD-UCS-32D16CC-WH | 32 inch | 16W | 120 V | TRIAC | 1,180/1,103/1,097 lm | 3CCT (2,700/3,000/4,000 K) | White | 31-7/8" x 3-5/8" x 15/16" |
| ASD-UCS-40D20CC-WH | 40 inch | 20W | 120 V | TRIAC | 1,509/1,430/1,431 lm | 3CCT (2,700/3,000/4,000 K) | White | 40-3/16" x 3-5/8" x 15/16" |
| ASD-UCS-48D24CC-WH | 48 inch | 24W | 120 V | TRIAC | 1,621/1,650/1,823 lm | 3CCT (2,700/3,000/4,000 K) | White | 48" x 3-5/8" x 15/16" |

For most up-to-date spec sheets please refer to asd-lighting.com



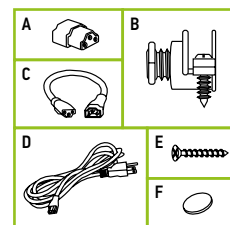
LED UNDER CABINET LIGHT

PRODUCT SPECIFICATIONS:

| Construction & Materials | | | | | | |
|--------------------------------------|-------------------------------|----------------------|--------------------|----------------------|--------------------|----------------------|
| Housing | Aluminum | | | | | |
| Lens | Plastic | | | | | |
| Finish | White, Bronze | | | | | |
| Weight | ASD-UCL-9D3CC-WH | 1.1 lb (0.5 kg) | ASD-UCL-48D24CC-WH | 3.2 lb (1.5 kg) | ASD-UCS-24D12CC-WH | 2.3 lb (1 kg) |
| | ASD-UCL-12D5CC-WH | 1.3 lb (0.6 kg) | ASD-UCS-9D3CC-WH | 1.3 lb (0.6 kg) | ASD-UCS-24D12CC-BZ | |
| | ASD-UCL-18D8CC-WH | 1.5 lb (0.7 kg) | ASD-UCS-12D5CC-WH | 1.4 lb (0.6 kg) | ASD-UCS-32D16CC-WH | 3 lb (1.4 kg) |
| | ASD-UCL-24D12CC-WH | 1.9 lb (0.9 kg) | ASD-UCS-12D5CC-BZ | | ASD-UCS-40D20CC-WH | 3.6 lb (1.6 kg) |
| | ASD-UCL-32D16CC-WH | 2.3 lb (1 kg) | ASD-UCS-18D8CC-WH | 1.9 lb (0.9 kg) | ASD-UCS-48D24CC-WH | 3.9 lb (1.8 kg) |
| | ASD-UCL-40D20CC-WH | 2.8 lb (1.3 kg) | ASD-UCS-18D8CC-BZ | | | |
| Environmental system | | | | | | |
| Work environment | Suitable for Damp Locations | | | | | |
| Operating temperature | -4°F to 113°F (-20°C to 45°C) | | | | | |
| L-70 Life | > 50,000 hrs | | | | | |
| Optical system | | | | | | |
| Luminous flux | ASD-UCL-9D3CC-WH | 170/207/214 lm | ASD-UCL-48D24CC-WH | 1,710/1,650/1,781 lm | ASD-UCS-24D12CC-WH | 850/610/747 lm |
| | ASD-UCL-12D5CC-WH | 297/395/406 lm | ASD-UCS-9D3CC-WH | 226/240/247 lm | ASD-UCS-24D12CC-BZ | |
| | ASD-UCL-18D8CC-WH | 480/533/548 lm | ASD-UCS-12D5CC-WH | 350/314/317 lm | ASD-UCS-32D16CC-WH | 1,180/1,103/1,097 lm |
| | ASD-UCL-24D12CC-WH | 758/854/874 lm | ASD-UCS-12D5CC-BZ | | ASD-UCS-40D20CC-WH | 1,509/1,430/1,431 lm |
| | ASD-UCL-32D16CC-WH | 1,084/1,104/1,131 lm | ASD-UCS-18D8CC-WH | 560/484/488 lm | ASD-UCS-48D24CC-WH | 1,621/1,650/1,823 lm |
| | ASD-UCL-40D20CC-WH | 1,437/1,477/1,532 lm | ASD-UCS-18D8CC-BZ | | | |
| Color temperature | 3CCT (2,700/3,000/4,000 K) | | | | | |
| CRI | > 90 | | | | | |
| Electrical system | | | | | | |
| Input voltage | 120 V | | | | | |
| Max input current | ASD-UCL-9D3CC-WH | 0.03 A | ASD-UCL-48D24CC-WH | 0.23 A | ASD-UCS-24D12CC-WH | 0.15 A |
| | ASD-UCL-12D5CC-WH | 0.05 A | ASD-UCS-9D3CC-WH | 0.03 A | ASD-UCS-24D12CC-BZ | |
| | ASD-UCL-18D8CC-WH | 0.082 A | ASD-UCS-12D5CC-WH | 0.1 A | ASD-UCS-32D16CC-WH | 0.23 A |
| | ASD-UCL-24D12CC-WH | 0.12 A | ASD-UCS-12D5CC-BZ | | ASD-UCS-40D20CC-WH | |
| | ASD-UCL-32D16CC-WH | 0.165 A | ASD-UCS-18D8CC-WH | 0.15 A | ASD-UCS-48D24CC-WH | |
| | ASD-UCL-40D20CC-WH | 0.21 A | ASD-UCS-18D8CC-BZ | | | |
| Inrush current (Action time) | ASD-UCL-9D3CC-WH | 0.03 A (1 S) | ASD-UCL-48D24CC-WH | 0.23 A (1 S) | ASD-UCS-24D12CC-WH | 0.15 A (0.5 S) |
| | ASD-UCL-12D5CC-BZ | 0.05 A (1 S) | ASD-UCS-9D3CC-WH | 0.03 A (0.5 S) | ASD-UCS-24D12CC-BZ | |
| | ASD-UCL-18D8CC-WH | 0.08 A (1 S) | ASD-UCS-12D5CC-WH | 0.1 A (0.5 S) | ASD-UCS-32D16CC-WH | 0.23 A (0.5 S) |
| | ASD-UCL-24D12CC-WH | 0.12 A (1 S) | ASD-UCS-12D5CC-BZ | | ASD-UCS-40D20CC-WH | |
| | ASD-UCL-32D16CC-WH | 0.16 A (1 S) | ASD-UCS-18D8CC-WH | 0.15 A (0.5 S) | ASD-UCS-48D24CC-WH | |
| | ASD-UCL-40D20CC-WH | 0.21 A (1 S) | ASD-UCS-18D8CC-BZ | | | |
| Off state power | 0W | | | | | |
| Power consumption | ASD-UCL-9D3CC-WH | 3W | ASD-UCL-48D24CC-WH | 24W | ASD-UCS-24D12CC-WH | 12W |
| | ASD-UCL-12D5CC-WH | 5W | ASD-UCS-9D3CC-WH | 3W | ASD-UCS-24D12CC-BZ | |
| | ASD-UCL-18D8CC-WH | 8W | ASD-UCS-12D5CC-WH | 5W | ASD-UCS-32D16CC-WH | 16W |
| | ASD-UCL-24D12CC-WH | 12W | ASD-UCS-12D5CC-BZ | | ASD-UCS-40D20CC-WH | 20W |
| | ASD-UCL-32D16CC-WH | 16W | ASD-UCS-18D8CC-WH | 8W | ASD-UCS-48D24CC-WH | 24W |
| | ASD-UCL-40D20CC-WH | 20W | ASD-UCS-18D8CC-BZ | | | |
| Power factor | > 0.9 | | | | | |
| Output voltage | 120 V | | | | | |
| Max output current | ASD-UCL-9D3CC-WH | 0.024 A | ASD-UCL-48D24CC-WH | 0.19 A | ASD-UCS-24D12CC-WH | 0.438 A |
| | ASD-UCL-12D5CC-WH | 0.039 A | ASD-UCS-9D3CC-WH | 0.1 A | ASD-UCS-24D12CC-BZ | |
| | ASD-UCL-18D8CC-WH | 0.064 A | ASD-UCS-12D5CC-WH | 0.288 A | ASD-UCS-32D16CC-WH | 0.516 A |
| | ASD-UCL-24D12CC-WH | 0.095 A | ASD-UCS-12D5CC-BZ | | ASD-UCS-40D20CC-WH | 0.473 A |
| | ASD-UCL-32D16CC-WH | 0.126 A | ASD-UCS-18D8CC-WH | 0.419 A | ASD-UCS-48D24CC-WH | 0.54 A |
| | ASD-UCL-40D20CC-WH | 0.158 A | ASD-UCS-18D8CC-BZ | | | |
| Dimming range | | | | | | |
| 10-100% | | | | | | |
| Dimming compatible controls | | | | | | |
| Brand | Lutron | | | | | |
| Models | DV-603PG-WH | MACL-153M | DVL-600P | | | |
| | PD-6WCL-WH | DVCL-153P | DV-600P | | | |
| Regular and voluntary certifications | | | | | | |
| 5-year limited warranty | | | | | | |
| Energy Star listed | | | | | | |
| cETLus certified 3153196 | | | | | | |

PACKAGE CONTENTS:

| Description | Q-ty |
|--------------------------|------|
| LED Under Cabinet Light | 1 |
| End-to-end connector (A) | 1 |
| Romex connector (B) | 1 |
| 6' linking cord (C) | 1 |
| 6 ft power cord (D) | 1 |
| Screw (E) | 2 |
| Screw cap (F) | 2 |
| Box | 1 |



For most up-to-date spec sheets please refer to asd-lighting.com

ASD LIGHTING CORP

E-mail: orders@asd-lighting.com | Web site: www.asd-lighting.com





LED UNDER CABINET LIGHT

INSTALLATION GUIDE

IMPORTANT SAFETY INFORMATION:

Please read all the instructions below before installation.

- ▶ Make sure that the supply voltage corresponds to the rated product voltage.
- ▶ The product must be installed by a qualified electrician in accordance with the National Electrical Code and corresponding local codes.
- ▶ If the product is damaged, do not use it.

⚠ WARNING

RISK OF PERSONAL INJURY – READ and follow all WARNINGS and installation instructions. Keep or give to the owner for future reference.

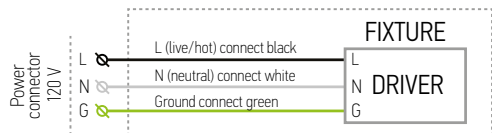
Risk of cuts: Wear gloves to prevent cuts or abrasions when removing from carton, handling, installing, and maintaining this product.

Risk of electric shock: This product must be installed in accordance with the applicable installation code by a person familiar with the construction and operation of the product and the hazards involved.

Risk of Fire: Minimum 194°F supply conductors. Consult a qualified electrician to ensure correct branch circuit conductor.

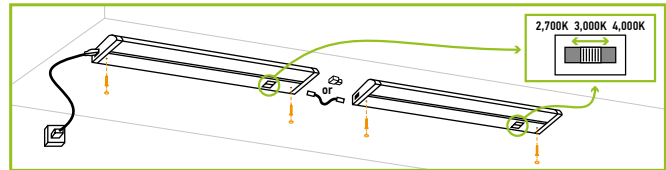
ASD® assumes no responsibility for claims arising out of improper or careless installation or handling of this product.

ELECTRICAL SCHEMATIC DIAGRAM:



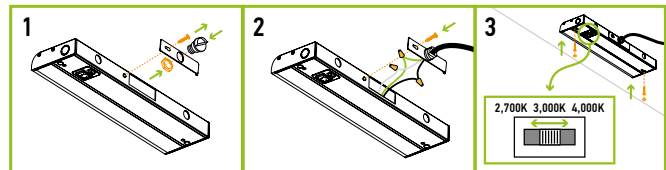
PLUG-IN INSTALLATION:

1. Attach the fixture to the surface using the two screws.
2. Multiple fixtures can be linked together with the end to end connector or linking cord.
3. Choose the preferred color temperature and lighting mode by using the switch.



HARDWIRE INSTALLATION:

1. Remove the knock-out. Dismount adapter plate by loosening screw. Insert the Romex connector into the open hole and secure it with the nut.
2. Connect the wires: Black to Black, White to White, Green to Green using wire nuts. Tuck all the wires into the fixture and reattach the adapter plate by tightening the screw.
3. Attach the fixture to the surface using the two screws. Multiple fixtures can be linked together with the end to end connector or linking cord. Choose the preferred color temperature and lighting mode using the switch.



* Multiple fixtures with different sizes and wattages can be linked together, the total wattage must not exceed 200W.

ORDERING INFORMATION

| Model | UPC | Pcs. per carton | Carton size | Carton weight | GTIN 14 |
|--------------------|--------------|-----------------|----------------------|---------------|----------------|
| UCL LINEAR | | | | | |
| ASD-UCL-9D3CC-WH | 810050734196 | 20 | 14.8" x 14.4" x 8.7" | 27.3 lb | 40810050734194 |
| ASD-UCL-12D5CC-WH | 810050734202 | 20 | 17.3" x 14.8" x 8.7" | 31.3 lb | 10810050734209 |
| ASD-UCL-18D8CC-WH | 810050734226 | 20 | 23.2" x 14.8" x 8.7" | 35.3 lb | 10810050734223 |
| ASD-UCL-24D12CC-WH | 810050734240 | 20 | 29.3" x 14.8" x 8.7" | 44.1 lb | 10810050734247 |
| ASD-UCL-32D16CC-WH | 810050734264 | 12 | 37.4" x 9.1" x 8.7" | 34.4 lb | 30810050734265 |
| ASD-UCL-40D20CC-WH | 810050734271 | 12 | 45.3" x 9.1" x 8.7" | 40.7 lb | 30810050734272 |
| ASD-UCL-48D24CC-WH | 810050734288 | 12 | 53.4" x 9.1" x 8.7" | 46.3 lb | 30810050734289 |
| UCS SWIVEL | | | | | |
| ASD-UCS-9D3CC-WH | 810050738835 | 20 | 15.2" x 14.8" x 8.7" | 13.4 lb | 10810050738832 |
| ASD-UCS-12D5CC-WH | 810050731102 | 20 | 18.1" x 14.8" x 8.7" | 33.5 lb | 30810050731103 |
| ASD-UCS-12D5CC-BZ | 810050731119 | 20 | 18.1" x 14.8" x 8.7" | 33.5 lb | 40810050731117 |
| ASD-UCS-18D8CC-WH | 810050731126 | 20 | 24" x 14.8" x 8.7" | 37.5 lb | 30810050731127 |
| ASD-UCS-18D8CC-BZ | 810050731133 | 20 | 24" x 14.8" x 8.7" | 37.5 lb | 40810050731131 |
| ASD-UCS-24D12CC-WH | 810050731140 | 20 | 30.1" x 14.8" x 8.7" | 51.6 lb | 30810050731141 |
| ASD-UCS-24D12CC-BZ | 810050731157 | 20 | 30.1" x 14.8" x 8.7" | 51.6 lb | 40810050731155 |
| ASD-UCS-32D16CC-WH | 810050733557 | 12 | 38.2" x 9.1" x 8.7" | 39.2 lb | 50810050733552 |
| ASD-UCS-40D20CC-WH | 810050733564 | 12 | 46.1" x 9.1" x 8.7" | 47.1 lb | 50810050733569 |
| ASD-UCS-48D24CC-WH | 810050738828 | 12 | 54.1" x 9.1" x 8.7" | 49.2 lb | 10810050738825 |

For most up-to-date spec sheets please refer to asd-lighting.com