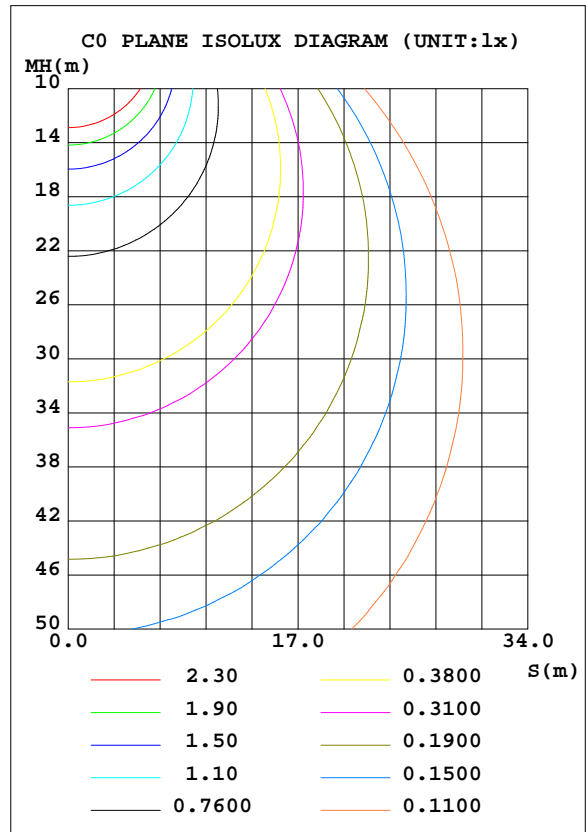
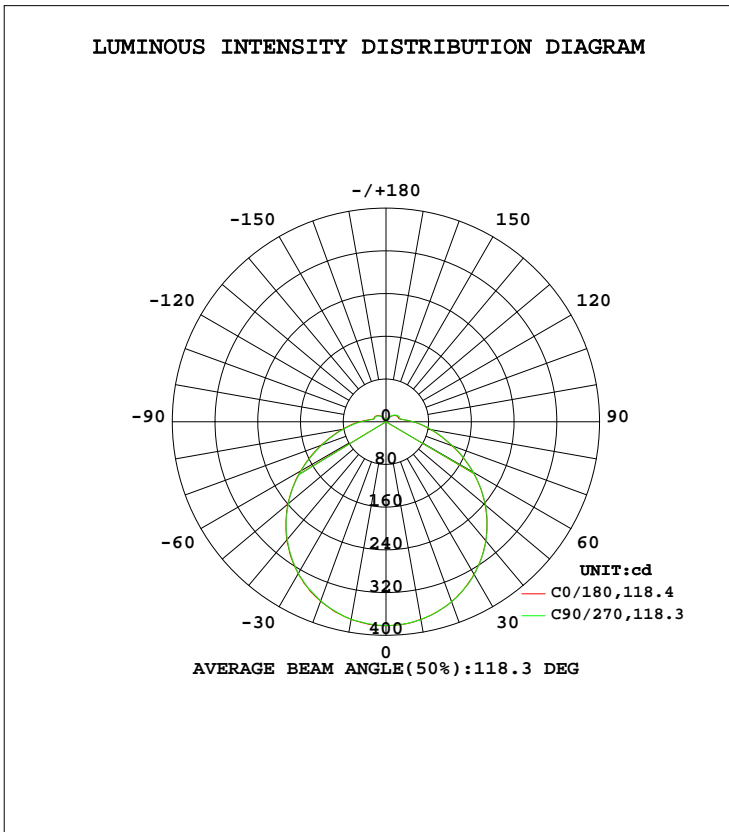


LUMINAIRE PHOTOMETRIC TEST REPORT

Test:U:120.1V I:0.1191A P:13.95W PF:0.9753 Lamp Flux:1362.37x1 lm		
NAME: ASD-LFMDR-MV-12D15CC-EM-NK 5000K	TYPE:N/A	WEIGHT:N/A
SPEC.:N/A	DIM.: N/A	SERIAL No.:N/A
MFR.: ASD Lighting corp	SUR.:N/A	Shielding Angle:N/A

DATA OF LAMP		PHOTOMETRIC DATA			
MODEL	PSZ2S220523001-10	Imax(cd)	382.1	S/MH(C0/180)	1.28
NOMINAL POWER(W)		LOR(%)	100.0	S/MH(C90/270)	1.29
RATED VOLTAGE(V)	120	TOTAL FLUX(lm)	1362.4	η UP, DN(C0-180)	4.6,44.9
NOMINAL FLUX(lm)	1362.37	CIE CLASS	DIRECT	η UP, DN(C180-360)	5.0,45.5
LAMPS INSIDE	1	η up(%)	9.6	CIBSE SHR NOM	1.25
TEST VOLTAGE(V)	120	η down(%)	90.4	CIBSE SHR MAX	1.35



C Range: 0 - 360DEG  
 C Interval: 22.5DEG  
 Test Speed: HIGH  
 Temperature:25.4DEG  
 Operators:Carl  
 Test Date:2022-06-04

γ Range: 0 - 180DEG  
 γ Interval: 1.0DEG  
 Test System:EVERFINE GO-R5000\_V2 SYSTEM V2.0.351  
 Humidity:39%  
 Test Distance:2.526m [K=1.0000]  
 Remarks:

ZONAL FLUX DIAGRAM

ZONAL FLUX DIAGRAM:

γ	C0	C45	C90	C135	C180	C225	C270	C315	γ	Φ zone	Φ total	%lum,lamp
10	375.9	375.7	375.5	376.3	376.0	376.9	376.8	375.7	0- 10	36.15	36.15	2.65,2.65
20	357.6	357.1	356.7	358.1	358.9	359.8	358.7	357.7	10- 20	104.0	140.2	10.3,10.3
30	328.4	327.1	327.9	330.2	329.6	331.6	330.5	328.6	20- 30	159.1	299.2	22,22
40	288.9	286.7	287.2	290.8	290.5	293.0	291.7	289.0	30- 40	194.3	493.6	36.2,36.2
50	240.3	237.6	238.3	242.2	242.6	244.8	243.3	240.0	40- 50	205.4	699.0	51.3,51.3
60	184.8	181.9	183.2	187.3	187.8	190.4	189.0	185.0	50- 60	191.5	890.5	65.4,65.4
70	129.5	126.4	127.5	131.8	131.7	134.9	133.0	129.2	60- 70	156.6	1047	76.9,76.9
80	83.19	80.33	81.01	84.43	85.27	88.59	86.85	83.19	70- 80	112.2	1159	85.1,85.1
90	49.12	46.48	46.86	49.68	50.96	53.45	51.61	49.15	80- 90	71.94	1231	90.4,90.4
100	27.36	25.52	26.09	27.73	28.27	30.20	29.50	27.82	90-100	40.73	1272	93.4,93.4
110	23.30	22.44	22.48	23.00	24.65	27.08	26.72	24.53	100-110	26.33	1298	95.3,95.3
120	21.67	20.66	20.80	21.44	22.72	24.69	24.23	22.29	110-120	23.40	1322	97,97
130	18.21	17.18	17.14	17.32	18.12	19.77	19.37	17.87	120-130	18.25	1340	98.4,98.4
140	13.41	14.27	12.45	12.53	12.31	14.03	13.53	12.31	130-140	12.18	1352	99.2,99.2
150	8.886	7.551	8.546	7.177	6.435	7.762	7.922	7.966	140-150	6.585	1359	99.7,99.7
160	3.793	2.702	4.173	4.871	4.187	3.287	5.982	2.893	150-160	2.719	1361	99.9,99.9
170	3.075	2.226	3.088	2.323	1.840	2.312	2.601	1.867	160-170	0.8114	1362	100,100
180	0.4525	0.6280	0.6660	1.333	0.6381	0.6376	0.6394	0.6370	170-180	0.1748	1362	100,100
DEG	LUMINOUS INTENSITY:cd									UNIT:lm		

Conical surface Flux(90deg): 596.47 lm

%lum = 43.8%  
%lamp = 43.8%

Conical surface Flux(120deg): 890.48 lm

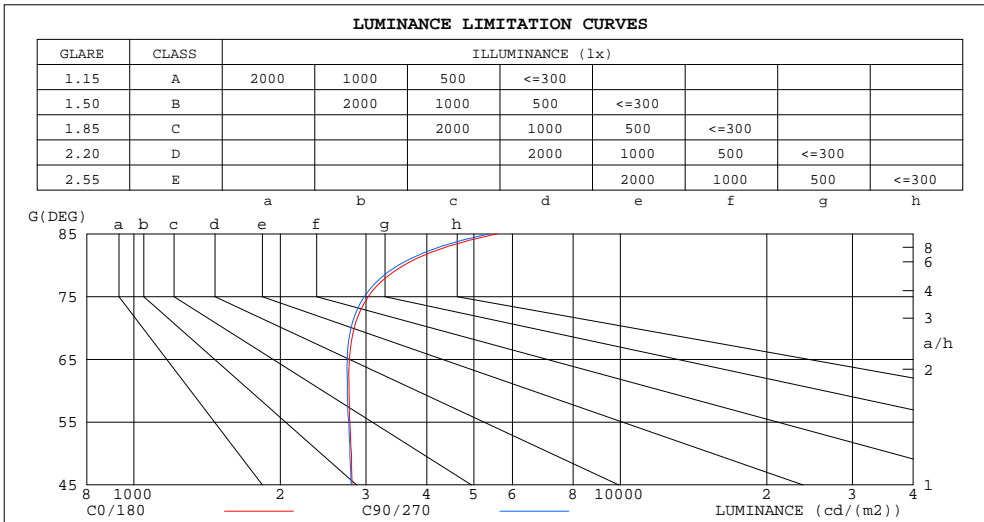
%lum = 65.4%  
%lamp = 65.4%

C Range: 0 - 360DEG  
C Interval: 22.5DEG  
Test Speed: HIGH  
Temperature:25.4DEG  
Operators:Carl  
Test Date:2022-06-04

γ Range: 0 - 180DEG  
γ Interval: 1.0DEG  
Test System:EVERFINE GO-R5000\_V2 SYSTEM V2.0.351  
Humidity:39%  
Test Distance:2.526m [K=1.0000]  
Remarks:

LUMINANCE LIMITATION CURVES

Test:U:120.1V I:0.1191A P:13.95W PF:0.9753 Lamp Flux:1362.37x1 lm		
NAME: ASD-LFMDR-MV-12D15CC-EM-NK 5000K	TYPE:N/A	WEIGHT:N/A
SPEC.:N/A	DIM.: N/A	SERIAL No.:N/A
MFR.: ASD Lighting corp	SUR.:N/A	Shielding Angle:N/A



LUMINANCE cd/(m2)		
G (DEG)	C0/180	C90/270
85	5577	5375
80	3590	3496
75	3034	2977
70	2837	2794
65	2774	2747
60	2769	2746
55	2780	2766
50	2801	2779
45	2808	2799

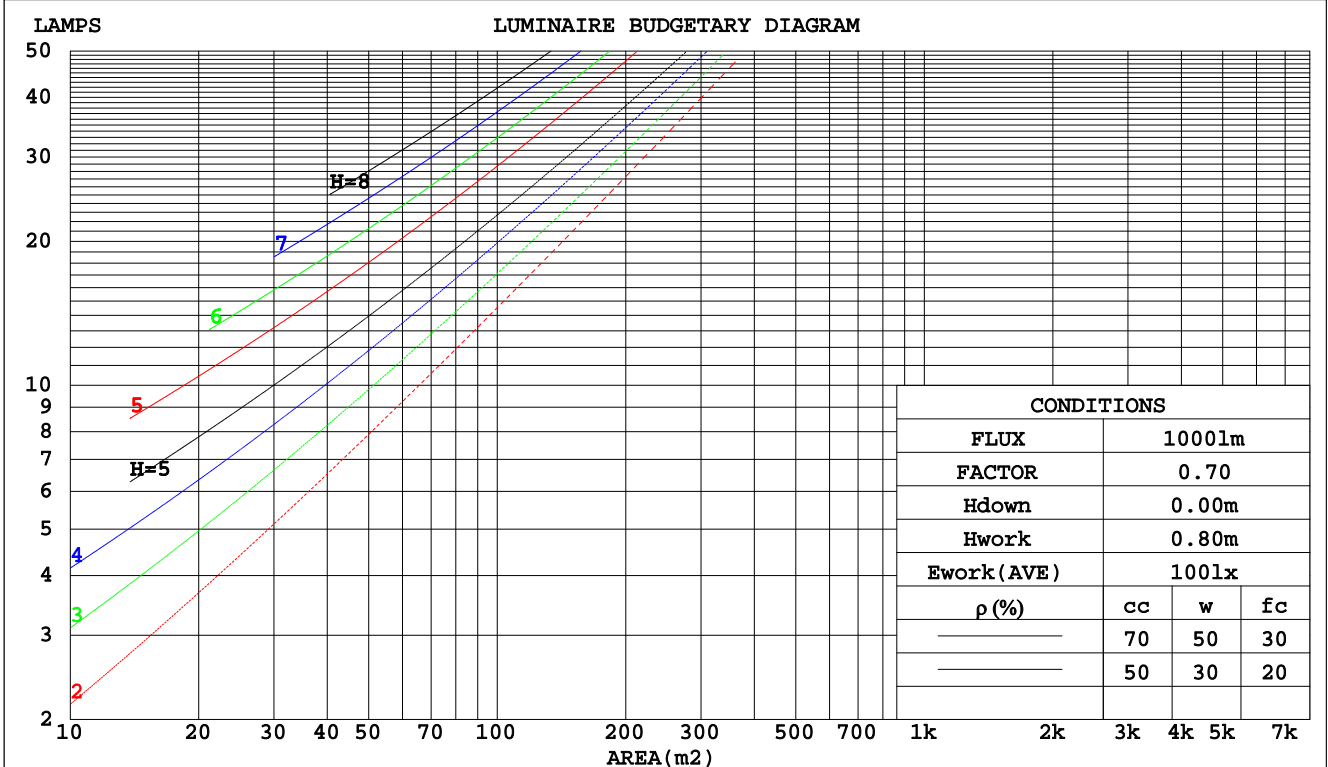
C Range: 0 - 360DEG  
 C Interval: 22.5DEG  
 Test Speed: HIGH  
 Temperature: 25.4DEG  
 Operators: Carl  
 Test Date: 2022-06-04

$\gamma$  Range: 0 - 180DEG  
 $\gamma$  Interval: 1.0DEG  
 Test System: EVERFINE GO-R5000\_V2 SYSTEM V2.0.351  
 Humidity: 39%  
 Test Distance: 2.526m [K=1.0000]  
 Remarks:

CU AND LUMINAIRE BUDGETARY ESTIMATE DIAGRAM

Test:U:120.1V I:0.1191A P:13.95W PF:0.9753 Lamp Flux:1362.37x1 lm		
NAME: ASD-LFMDR-MV-12D15CC-EM-NK 5000K	TYPE:N/A	WEIGHT:N/A
SPEC.:N/A	DIM.: N/A	SERIAL No.:N/A
MFR.: ASD Lighting corp	SUR.:N/A	Shielding Angle:N/A

pcc	80%			70%			50%			30%			10%			0
pw	50%	30%	10%	50%	30%	10%	50%	30%	10%	50%	30%	10%	50%	30%	10%	0
pfc	20%			20%			20%			20%			20%			0
RCR	RCR:Room Cavity Ratio															
	Coefficients of Utilization(CU)															
0.0	1.17	1.17	1.17	1.13	1.13	1.13	1.06	1.06	1.06	.99	.99	.99	.93	.93	.93	.90
1.0	.99	.94	.90	.96	.92	.88	.90	.86	.83	.84	.81	.79	.79	.77	.75	.72
2.0	.86	.78	.72	.83	.76	.70	.78	.72	.67	.73	.68	.64	.69	.65	.61	.59
3.0	.75	.66	.59	.72	.64	.58	.68	.61	.56	.64	.58	.54	.60	.56	.52	.49
4.0	.66	.57	.50	.64	.55	.49	.60	.53	.47	.57	.51	.46	.53	.48	.44	.41
5.0	.59	.49	.43	.57	.48	.42	.54	.46	.41	.51	.44	.39	.48	.42	.38	.35
6.0	.53	.44	.37	.51	.43	.36	.48	.41	.35	.46	.39	.34	.43	.38	.33	.31
7.0	.48	.39	.32	.46	.38	.32	.44	.37	.31	.42	.35	.30	.40	.34	.29	.27
8.0	.43	.35	.29	.42	.34	.28	.40	.33	.28	.38	.32	.27	.36	.31	.26	.24
9.0	.40	.31	.26	.39	.31	.26	.37	.30	.25	.35	.29	.24	.34	.28	.24	.22
10.0	.37	.29	.23	.36	.28	.23	.34	.27	.23	.33	.26	.22	.31	.25	.21	.20



C Range: 0 - 360DEG  
 C Interval: 22.5DEG  
 Test Speed: HIGH  
 Temperature: 25.4DEG  
 Operators: Carl  
 Test Date: 2022-06-04

γ Range: 0 - 180DEG  
 γ Interval: 1.0DEG  
 Test System: EVERFINE GO-R5000\_V2 SYSTEM V2.0.351  
 Humidity: 39%  
 Test Distance: 2.526m [K=1.0000]  
 Remarks:

WEC AND CCEC

Test:U:120.1V I:0.1191A P:13.95W PF:0.9753 Lamp Flux:1362.37x1 lm		
NAME: ASD-LFMDR-MV-12D15CC-EM-NK 5000K	TYPE:N/A	WEIGHT:N/A
SPEC.:N/A	DIM.: N/A	SERIAL No.:N/A
MFR.: ASD Lighting corp	SUR.:N/A	Shielding Angle:N/A

ρcc	80%			70%			50%			30%			10%			0
ρw	50%	30%	10%	50%	30%	10%	50%	30%	10%	50%	30%	10%	50%	30%	10%	0
ρfc	20%			20%			20%			20%			20%			0
RCR	RCR:Room Cavity Ratio						Wall Exitance Coefficients(WEC)									
0.0																
1.0	.353	.201	.064	.343	.196	.062	.324	.186	.059	.306	.177	.057	.290	.168	.054	
2.0	.315	.173	.053	.306	.168	.052	.289	.161	.050	.273	.153	.048	.259	.146	.046	
3.0	.284	.151	.045	.276	.148	.045	.261	.141	.043	.247	.135	.041	.234	.129	.040	
4.0	.258	.134	.039	.251	.131	.039	.238	.126	.038	.225	.121	.036	.213	.116	.035	
5.0	.237	.121	.035	.230	.118	.034	.218	.113	.033	.206	.109	.032	.195	.104	.031	
6.0	.218	.109	.031	.212	.107	.031	.201	.103	.030	.190	.099	.029	.181	.095	.028	
7.0	.202	.100	.028	.197	.098	.028	.186	.094	.027	.177	.091	.026	.168	.087	.026	
8.0	.188	.092	.026	.183	.090	.025	.174	.087	.025	.165	.084	.024	.157	.081	.023	
9.0	.175	.085	.024	.171	.083	.023	.163	.080	.023	.155	.078	.022	.147	.075	.022	
10.0	.165	.079	.022	.161	.078	.022	.153	.075	.021	.145	.072	.021	.139	.070	.020	

ρcc	80%			70%			50%			30%			10%			0
ρw	50%	30%	10%	50%	30%	10%	50%	30%	10%	50%	30%	10%	50%	30%	10%	0
ρfc	20%			20%			20%			20%			20%			0
RCR	RCR:Room Cavity Ratio						Ceiling Cavity Exitance Coefficients(CCEC)									
0.0	.264	.264	.264	.225	.225	.225	.154	.154	.154	.088	.088	.088	.028	.028	.028	
1.0	.257	.230	.205	.220	.197	.176	.151	.136	.122	.087	.078	.071	.028	.025	.023	
2.0	.250	.206	.170	.214	.178	.147	.147	.123	.102	.085	.071	.060	.027	.023	.020	
3.0	.242	.189	.147	.208	.163	.128	.142	.113	.089	.082	.066	.053	.026	.022	.017	
4.0	.234	.176	.132	.201	.152	.115	.138	.106	.081	.080	.062	.048	.026	.020	.016	
5.0	.227	.166	.122	.195	.144	.106	.134	.101	.075	.078	.059	.044	.025	.019	.015	
6.0	.219	.158	.114	.189	.137	.099	.130	.096	.070	.075	.056	.042	.024	.018	.014	
7.0	.212	.151	.109	.183	.131	.095	.126	.092	.067	.073	.054	.040	.024	.018	.013	
8.0	.206	.146	.104	.177	.126	.091	.123	.089	.065	.071	.052	.038	.023	.017	.013	
9.0	.200	.141	.101	.172	.122	.088	.119	.086	.063	.069	.051	.037	.022	.017	.012	
10.0	.194	.137	.099	.167	.119	.086	.116	.083	.061	.068	.049	.036	.022	.016	.012	

C Range: 0 - 360DEG  
 C Interval: 22.5DEG  
 Test Speed: HIGH  
 Temperature:25.4DEG  
 Operators:Carl  
 Test Date:2022-06-04

γ Range: 0 - 180DEG  
 γ Interval: 1.0DEG  
 Test System:EVERFINE GO-R5000\_V2 SYSTEM V2.0.351  
 Humidity:39%  
 Test Distance:2.526m [K=1.0000]  
 Remarks:

UGR(Unified Glare Rating) Table

Test:U:120.1V I:0.1191A P:13.95W PF:0.9753 Lamp Flux:1362.37x1 lm										
NAME: ASD-LFMDR-MV-12D15CC-EM-NK 5000K					TYPE:N/A			WEIGHT:N/A		
SPEC.:N/A					DIM.: N/A			SERIAL No.:N/A		
MFR.: ASD Lighting corp					SUR.:N/A			Shielding Angle:N/A		
ceiling/cavity	0.7	0.7	0.5	0.5	0.3	0.7	0.7	0.5	0.5	0.3
walls	0.5	0.3	0.5	0.3	0.3	0.5	0.3	0.5	0.3	0.3
working plane	0.2	0.2	0.2	0.2	0.2	0.2	0.2	0.2	0.2	0.2
Room dimensions	Viewed crosswise					Viewed endwise				
x = 2H y = 2H	15.7	17.2	16.1	17.5	17.9	15.7	17.1	16.1	17.5	17.9
3H	17.5	18.9	18.0	19.3	19.7	17.5	18.8	17.9	19.2	19.6
4H	18.4	19.7	18.9	20.1	20.6	18.3	19.6	18.8	20.0	20.5
6H	19.3	20.5	19.8	20.9	21.4	19.2	20.4	19.7	20.9	21.3
8H	19.8	20.9	20.3	21.4	21.9	19.7	20.8	20.2	21.3	21.8
12H	20.3	21.4	20.8	21.9	22.4	20.2	21.3	20.7	21.8	22.3
4H 2H	16.4	17.6	16.8	18.0	18.5	16.3	17.6	16.8	18.0	18.5
3H	18.4	19.5	18.8	19.9	20.4	18.3	19.4	18.8	19.9	20.4
4H	19.4	20.4	19.9	20.9	21.4	19.3	20.4	19.9	20.8	21.4
6H	20.5	21.4	21.0	21.9	22.5	20.4	21.3	20.9	21.8	22.4
8H	21.1	21.9	21.6	22.4	23.0	21.0	21.8	21.5	22.4	22.9
12H	21.7	22.5	22.3	23.1	23.7	21.6	22.4	22.2	22.9	23.6
8H 4H	19.8	20.6	20.3	21.2	21.8	19.7	20.6	20.3	21.1	21.7
6H	21.1	21.8	21.7	22.4	23.0	21.0	21.8	21.6	22.3	23.0
8H	21.9	22.5	22.5	23.1	23.7	21.8	22.4	22.4	23.0	23.7
12H	22.7	23.3	23.4	23.9	24.6	22.6	23.2	23.2	23.8	24.5
12H 4H	19.8	20.6	20.4	21.2	21.8	19.8	20.6	20.4	21.1	21.7
6H	21.3	21.9	21.9	22.5	23.2	21.2	21.8	21.8	22.4	23.1
8H	22.1	22.7	22.7	23.3	24.0	22.0	22.6	22.7	23.2	23.9
Variations with the observer position at spacings:										
S = 1.0H	+ 0.1 / - 0.1					+ 0.1 / - 0.1				
1.5H	+ 0.2 / - 0.3					+ 0.2 / - 0.3				
2.0H	+ 0.1 / - 0.3					+ 0.1 / - 0.3				

CIE Pub.117 Corrected 1362 lm Total Lamp Luminous Flux.(8log(F/F0) = 1.1)

C Range: 0 - 360DEG  
 C Interval: 22.5DEG  
 Test Speed: HIGH  
 Temperature:25.4DEG  
 Operators:Carl  
 Test Date:2022-06-04

γ Range: 0 - 180DEG  
 γ Interval: 1.0DEG  
 Test System:EVERFINE GO-R5000\_V2 SYSTEM V2.0.351  
 Humidity:39%  
 Test Distance:2.526m [K=1.0000]  
 Remarks:

UTILIZATION FACTORS TABLE

Test:U:120.1V I:0.1191A P:13.95W PF:0.9753 Lamp Flux:1362.37x1 lm		
NAME: ASD-LFMDR-MV-12D15CC-EM-NK 5000K	TYPE:N/A	WEIGHT:N/A
SPEC.:N/A	DIM.: N/A	SERIAL No.:N/A
MFR.: ASD Lighting corp	SUR.:N/A	Shielding Angle:N/A

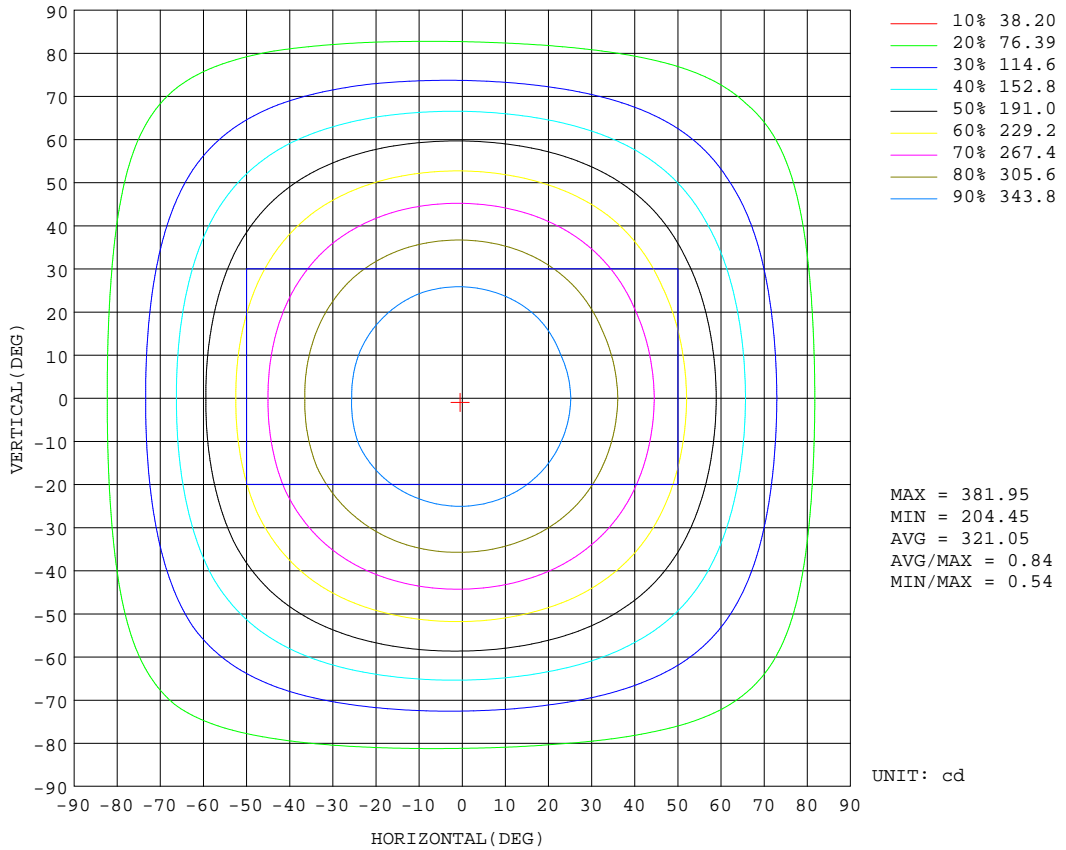
REFLECTANCE										
Ceiling	0.8	0.8	0.8	0.7	0.7	0.7	0.5	0.5	0.5	0
Walls	0.7	0.5	0.3	0.7	0.5	0.3	0.7	0.5	0.3	0
Working plane	0.2	0.2	0.2	0.2	0.2	0.2	0.2	0.2	0.2	0
ROOM INDEX	UTILIZATION FACTORS(PERCENT) $k(RI) \times RCR = 5$									
k = 0.60	52	40	33	51	40	33	50	39	33	26
0.80	62	50	42	61	49	42	58	48	41	34
1.00	70	58	50	68	57	50	65	58	49	41
1.25	77	65	57	75	64	57	71	62	56	47
1.50	82	71	63	80	70	62	76	67	61	51
2.00	89	79	72	87	77	71	82	74	68	58
2.50	93	84	77	90	82	76	85	78	73	62
3.00	97	89	82	94	86	80	88	82	77	66
4.00	101	94	88	98	92	87	92	87	83	71
5.00	104	98	93	101	95	91	94	90	86	74
ROOM INDEX	UF(total)									Direct
According to DIN EN 13032-2 2004			Suspended				SHRNOM = 1.25			

C Range: 0 - 360DEG  
 C Interval: 22.5DEG  
 Test Speed: HIGH  
 Temperature:25.4DEG  
 Operators:Carl  
 Test Date:2022-06-04

$\gamma$  Range: 0 - 180DEG  
 $\gamma$  Interval: 1.0DEG  
 Test System:EVERFINE GO-R5000\_V2 SYSTEM V2.0.351  
 Humidity:39%  
 Test Distance:2.526m [K=1.0000]  
 Remarks:

ISOCANDELA DIAGRAM

Test:U:120.1V I:0.1191A P:13.95W PF:0.9753 Lamp Flux:1362.37x1 lm		
NAME: ASD-LFMDR-MV-12D15CC-EM-NK 5000K	TYPE:N/A	WEIGHT:N/A
SPEC.:N/A	DIM.: N/A	SERIAL No.:N/A
MFR.: ASD Lighting corp	SUR.:N/A	Shielding Angle:N/A



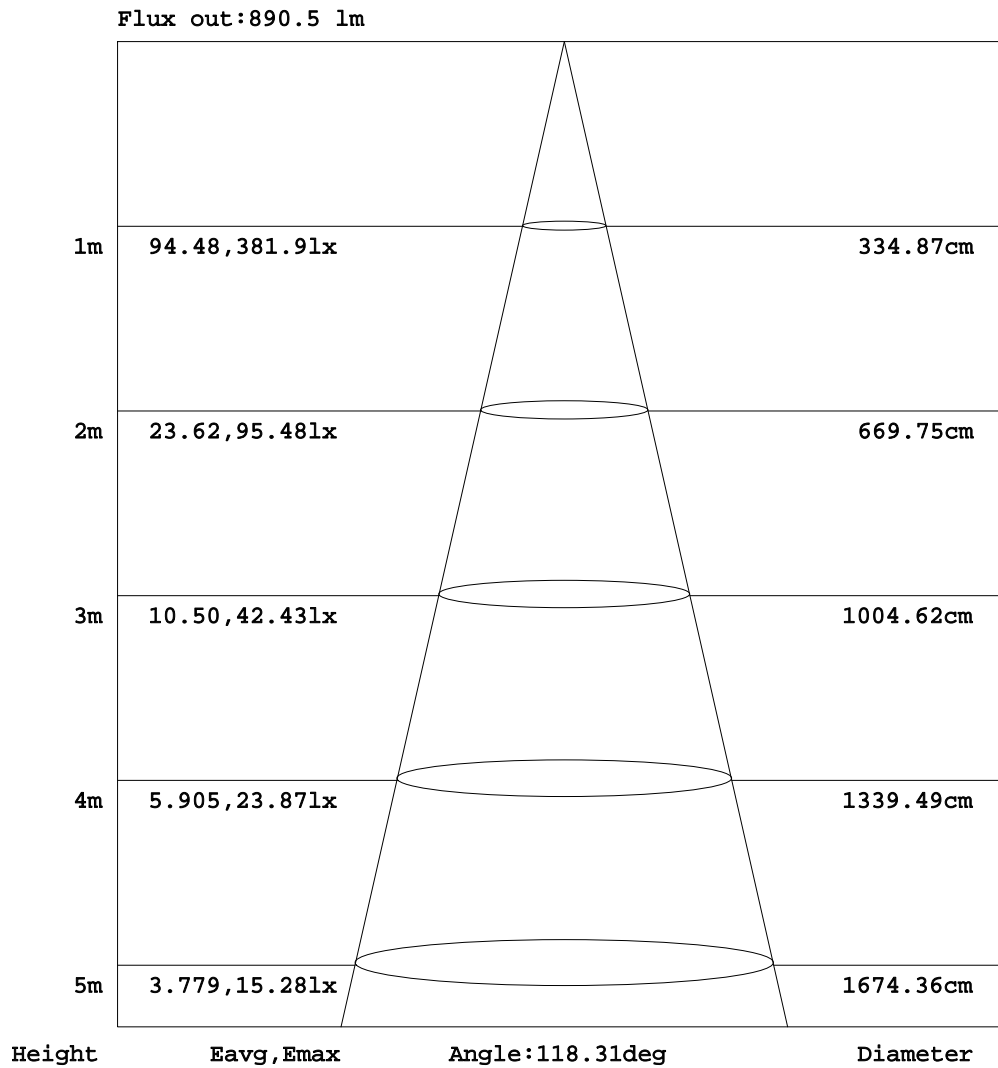
C Range: 0 - 360DEG  
 C Interval: 22.5DEG  
 Test Speed: HIGH  
 Temperature:25.4DEG  
 Operators:Carl  
 Test Date:2022-06-04

γ Range: 0 - 180DEG  
 γ Interval: 1.0DEG  
 Test System:EVERFINE GO-R5000\_V2 SYSTEM V2.0.351  
 Humidity:39%  
 Test Distance:2.526m [K=1.0000]  
 Remarks:



AAI Figure

Test:U:120.1V I:0.1191A P:13.95W PF:0.9753 Lamp Flux:1362.37x1 lm		
NAME: ASD-LFMDR-MV-12D15CC-EM-NK 5000K	TYPE:N/A	WEIGHT:N/A
SPEC.:N/A	DIM.: N/A	SERIAL No.:N/A
MFR.: ASD Lighting corp	SUR.:N/A	Shielding Angle:N/A



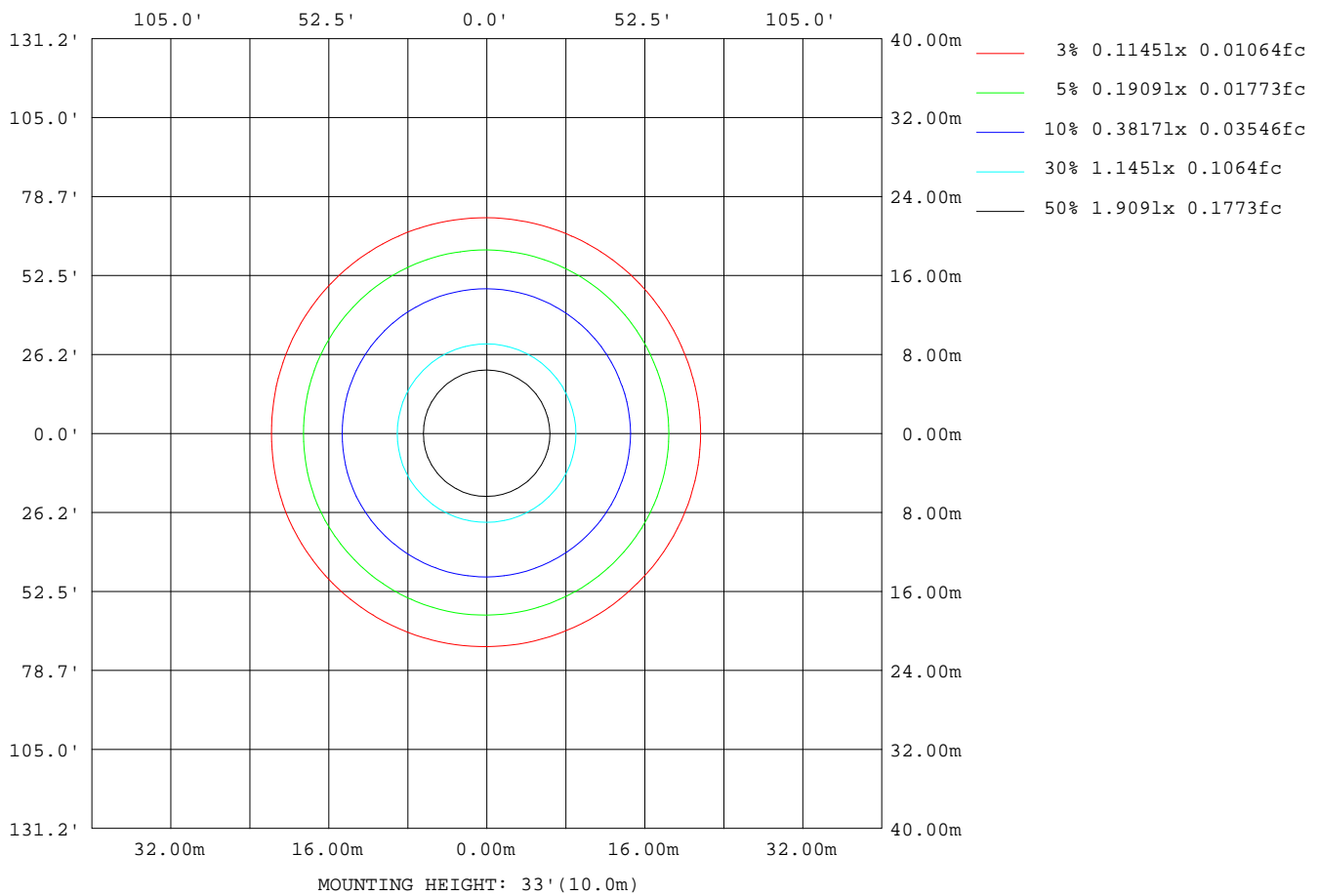
Note:The Curves indicate the illuminated area and the average illumination when the luminaire is at different distance.

C Range: 0 - 360DEG  
 C Interval: 22.5DEG  
 Test Speed: HIGH  
 Temperature:25.4DEG  
 Operators:Carl  
 Test Date:2022-06-04

γ Range: 0 - 180DEG  
 γ Interval: 1.0DEG  
 Test System:EVERFINE GO-R5000\_V2 SYSTEM V2.0.351  
 Humidity:39%  
 Test Distance:2.526m [K=1.0000]  
 Remarks:

**ISOLUX DIAGRAM**

Test:U:120.1V I:0.1191A P:13.95W PF:0.9753 Lamp Flux:1362.37x1 lm		
NAME: ASD-LFMDR-MV-12D15CC-EM-NK 5000K	TYPE:N/A	WEIGHT:N/A
SPEC.:N/A	DIM.: N/A	SERIAL No.:N/A
MFR.: ASD Lighting corp	SUR.:N/A	Shielding Angle:N/A



C Range: 0 - 360DEG  
 C Interval: 22.5DEG  
 Test Speed: HIGH  
 Temperature:25.4DEG  
 Operators:Carl  
 Test Date:2022-06-04

γ Range: 0 - 180DEG  
 γ Interval: 1.0DEG  
 Test System:EVERFINE GO-R5000\_V2 SYSTEM V2.0.351  
 Humidity:39%  
 Test Distance:2.526m [K=1.0000]  
 Remarks:

**LED Avg.L Report**

Test:U:120.1V I:0.1191A P:13.95W PF:0.9753 Lamp Flux:1362.37x1 lm		
NAME: ASD-LFMDR-MV-12D15CC-EM-NK 5000K	TYPE:N/A	WEIGHT:N/A
SPEC.:N/A	DIM.: N/A	SERIAL No.:N/A
MFR.: ASD Lighting corp	SUR.:N/A	Shielding Angle:N/A

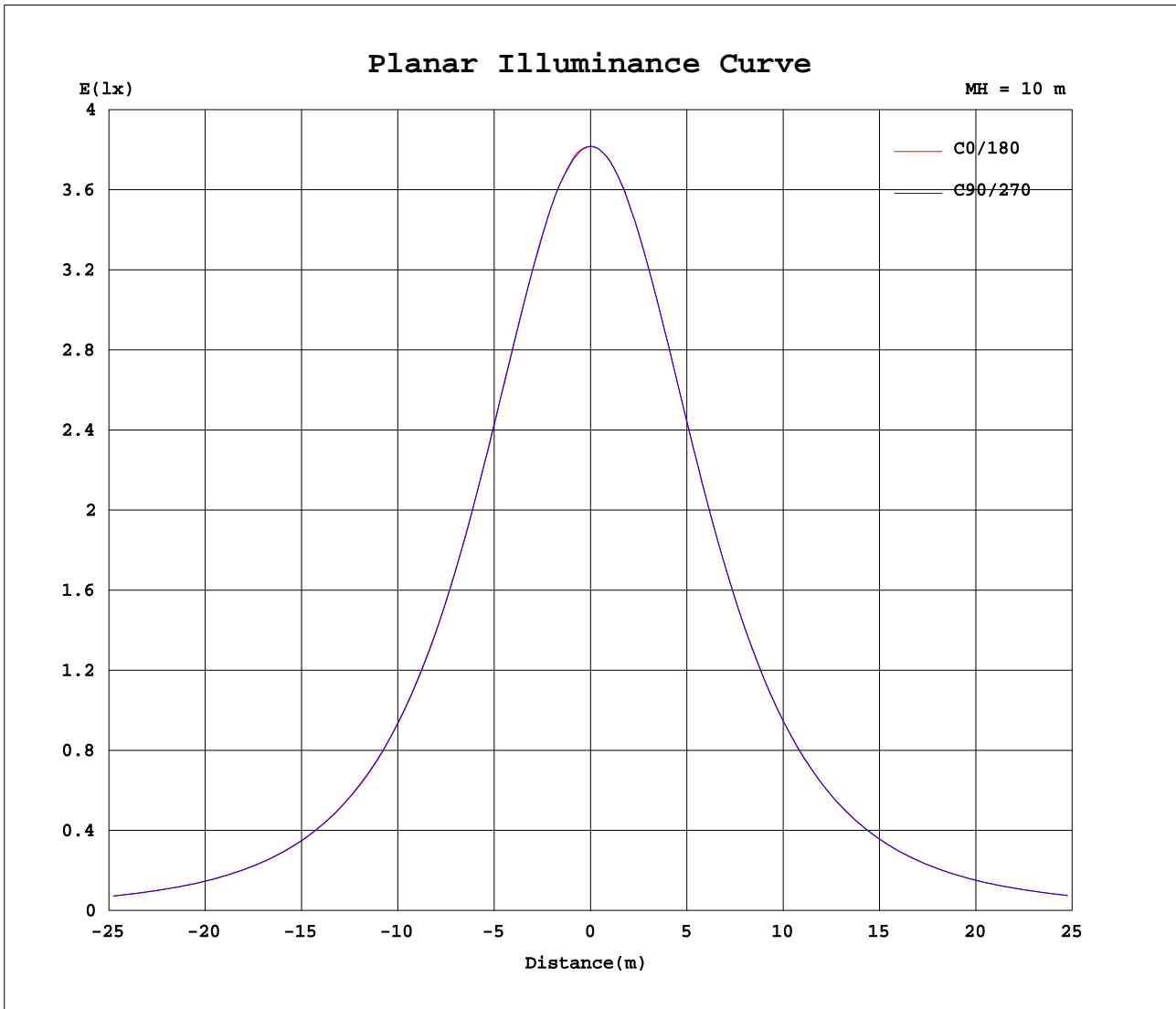
AvgL	cd/m2
L_0~180(65)av	2803
L_0~180(75)av	3067
L_0~180(85)av	5666
L_90~270(65)av	2800
L_90~270(75)av	3057
L_90~270(85)av	5611
L_45(65)av	2802
L_45(75)av	3063
L_45(85)av	5639

Standard: GB/T 29293-2012

C Range: 0 - 360DEG  
 C Interval: 22.5DEG  
 Test Speed: HIGH  
 Temperature:25.4DEG  
 Operators:Carl  
 Test Date:2022-06-04

γ Range: 0 - 180DEG  
 γ Interval: 1.0DEG  
 Test System:EVERFINE GO-R5000\_V2 SYSTEM V2.0.351  
 Humidity:39%  
 Test Distance:2.526m [K=1.0000]  
 Remarks:

Planar Illuminance Curve



C Range: 0 - 360DEG  
 C Interval: 22.5DEG  
 Test Speed: HIGH  
 Temperature: 25.4DEG  
 Operators: Carl  
 Test Date: 2022-06-04

$\gamma$  Range: 0 - 180DEG  
 $\gamma$  Interval: 1.0DEG  
 Test System: EVERFINE GO-R5000\_V2 SYSTEM V2.0.351  
 Humidity: 39%  
 Test Distance: 2.526m [K=1.0000]  
 Remarks:

LUMINOUS DISTRIBUTION INTENSITY DATA

Test:U:120.1V I:0.1191A P:13.95W PF:0.9753 Lamp Flux:1362.37x1 lm		
NAME: ASD-LFMDR-MV-12D15CC-EM-NK 5000K	TYPE:N/A	WEIGHT:N/A
SPEC.:N/A	DIM.: N/A	SERIAL No.:N/A
MFR.: ASD Lighting corp	SUR.:N/A	Shielding Angle:N/A

Table--1

UNIT: cd

C( DEG) γ (DEG)	0	22.5	45	67.5	90	112.5	135	157.5	180	202.5	225	247.5	270	292.5	315	337.5			
0	382	382	382	382	382	382	382	382	382	382	382	382	382	382	382	382			
5	380	380	380	380	380	380	380	381	381	380	381	380	380	381	380	380			
10	376	375	376	375	375	376	376	376	376	376	377	376	377	376	376	375			
15	368	367	368	367	367	368	369	369	369	369	370	370	369	369	368	367			
20	358	357	357	357	357	357	358	360	359	359	360	360	359	358	358	356			
25	344	343	344	343	344	345	346	347	346	346	348	346	346	346	345	343			
30	328	327	327	327	328	329	330	331	330	331	332	331	330	329	329	327			
35	310	309	308	308	309	310	312	313	312	312	314	313	312	311	310	308			
40	289	287	287	287	287	289	291	292	290	292	293	292	292	290	289	287			
45	265	264	263	263	264	265	267	269	268	269	270	270	268	267	265	263			
50	240	238	238	238	238	240	242	244	243	244	245	244	243	242	240	238			
55	213	211	211	210	212	213	215	218	216	217	218	218	217	215	213	211			
60	185	183	182	182	183	185	187	190	188	190	190	190	189	187	185	183			
65	156	155	153	153	155	157	159	161	160	161	163	162	161	159	157	155			
70	129	127	126	126	128	130	132	134	132	133	135	134	133	131	129	127			
75	105	103	102	102	103	104	107	109	107	109	110	110	108	106	105	103			
80	83.2	81.3	80.3	80.0	81.0	82.7	84.4	86.4	85.3	87.2	88.6	88.1	86.8	84.9	83.2	81.3			
85	64.9	63.0	62.1	61.9	62.5	64.1	65.6	67.5	66.9	68.5	69.9	69.3	68.0	66.4	64.7	63.2			
90	49.1	47.5	46.5	46.3	46.9	48.3	49.7	51.4	51.0	52.4	53.4	53.0	51.6	50.3	49.1	48.0			
95	36.3	34.9	33.9	33.6	34.5	35.3	36.7	37.8	37.5	38.7	39.7	39.3	38.0	36.9	36.1	35.7			
100	27.4	26.6	25.5	25.4	26.1	26.4	27.7	28.4	28.3	29.7	30.2	30.1	29.5	28.3	27.8	27.2			
105	23.1	22.6	22.2	22.1	22.3	22.4	23.1	23.9	24.6	26.0	27.0	27.2	26.7	25.6	24.5	23.5			
110	23.3	22.8	22.4	22.3	22.5	22.6	23.0	23.6	24.6	25.9	27.1	27.3	26.7	25.6	24.5	23.7			
115	23.0	22.3	22.0	21.9	22.1	22.2	22.5	23.2	24.1	25.3	26.4	26.6	25.9	24.9	23.9	23.1			
120	21.7	20.9	20.7	20.6	20.8	21.0	21.4	22.1	22.7	23.7	24.7	24.8	24.2	23.1	22.3	21.6			
125	20.1	19.3	19.0	19.0	19.0	19.3	19.5	20.2	20.5	21.5	22.3	22.6	22.1	21.1	20.2	19.8			
130	18.2	17.6	17.2	17.2	17.1	17.2	17.3	18.0	18.1	19.1	19.8	19.9	19.4	18.5	17.9	17.8			
135	15.9	15.3	15.4	14.9	14.9	14.9	14.9	15.5	15.3	16.3	17.1	16.9	16.6	15.7	15.2	15.3			
140	13.4	14.5	14.3	13.1	12.4	12.3	12.5	13.8	12.3	13.1	14.0	14.1	13.5	12.5	12.3	12.8			
145	10.6	10.6	11.1	11.5	10.5	10.2	9.86	10.0	9.10	10.7	10.9	11.2	10.2	9.36	9.65	9.90			
150	8.89	7.75	7.55	8.71	8.55	8.03	7.18	7.29	6.44	7.41	7.76	9.02	7.92	6.27	7.97	7.10			
155	6.32	5.09	5.22	6.08	6.68	7.29	5.20	7.22	6.85	5.22	5.99	8.48	5.13	4.35	4.79	5.40			
160	3.79	3.48	2.70	4.12	4.17	4.26	4.87	2.80	4.19	3.18	3.29	3.65	5.98	2.72	2.89	3.50			
165	3.07	2.59	1.84	3.41	3.47	3.45	3.28	1.81	2.22	2.22	2.42	2.65	2.95	2.00	2.32	2.83			
170	3.08	2.37	2.23	2.71	3.09	3.03	2.32	1.45	1.84	1.85	2.31	2.42	2.60	1.80	1.87	2.41			
175	1.49	2.49	2.69	1.38	1.66	1.53	1.07	1.45	1.15	1.16	1.69	1.90	1.28	0.97	1.21	1.45			
180	0.45	0.56	0.63	0.81	0.67	0.43	1.33	0.36	0.64	0.64	0.64	0.64	0.64	0.64	0.64	0.64			

C Range: 0 - 360DEG  
 C Interval: 22.5DEG  
 Test Speed: HIGH  
 Temperature:25.4DEG  
 Operators:Carl  
 Test Date:2022-06-04

γ Range: 0 - 180DEG  
 γ Interval: 1.0DEG  
 Test System:EVERFINE GO-R5000\_V2 SYSTEM V2.0.351  
 Humidity:39%  
 Test Distance:2.526m [K=1.0000]  
 Remarks: