



# LED DOWNLIGHT 2 INCH

► **DESIGN & OPTIONS** - LED DOWNLIGHT 2 INCH features a durable airtight die-cast aluminum body, multifaceted specular reflector with a 38° beam angle, and an anti-glare PC lens. It is also CCT selectable, allowing you to set it to 2,700K, 3,000K, 3,500K, 4,000K, or 5,000K with a simple switch. It runs on 120V with TRIAC dimming or 120-277V with 0-10V dimming and has a CRI90+.



The battery back-up kit provides 90 minutes of power in case of emergency.

► **INSTALLATION** - No housing is required. Two Adjustable springs clips secure the luminaire to the ceiling. It is IC rated for direct contact with insulation. Refer to install instructions for detailed steps.

► **APPLICATION** - LED DOWNLIGHT is perfect for retail, hospitality, commercial and certain residential settings. It is IP54 rated, making it perfect for spaces with humidity requirements.

► **ENERGY SAVING & EFFICIENCY** - With a lifespan of 50,000 hours, these fixtures are made to last decades under normal operation! This fixture can cut your electric bill by up to 80% instantly and will save you a significant amount of money in its lifetime.

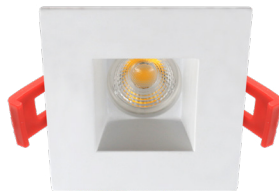
► **CERTIFICATION & WARRANTY** - Buy with confidence: ASD provides a 5-year limited warranty along with ETL certification to guarantee top quality products and safety!

Energy Star classification allows participation in rebates; please check the rebate programs available in your state.

Catalog number	
Notes	
Type	



REFLECTOR: WHITE  
TRIM: WHITE



REFLECTOR: WHITE  
TRIM: WHITE



REFLECTOR: CHROME  
TRIM: WHITE



REFLECTOR: CHROME  
TRIM: BLACK

Model	Size	Watts	Voltage	Dimmable	Lumens	CCT	Reflector color	Trim color	Dimensions (LxH)	Type
<b>CD ROUND</b>										
ASD-CD-PR-2D8AC-WH	2 inch	8W	120 V	TRIAC	600/561/615/645/649 lm	5CCT (2,700/3,000/3,500/4,000/5,000 K)	White	White	3-3/16" x 2-7/8"	Round
ASD-CD-CR-2D8AC-CH/WH	2 inch	8W	120 V	TRIAC	600/536/584/609/606 lm	5CCT (2,700/3,000/3,500/4,000/5,000 K)	Chrome	White	3-3/16" x 2-7/8"	Round
ASD-CD-CR-2D8AC-CH/BK	2 inch	8W	120 V	TRIAC	600/536/584/609/606 lm	5CCT (2,700/3,000/3,500/4,000/5,000 K)	Chrome	Black	3-3/16" x 2-7/8"	Round
ASD-CD-PR-2D15AC-WH	2 inch	15W	120 V	TRIAC	830/978/1,078/1,110/1,023 lm	5CCT (2,700/3,000/3,500/4,000/5,000 K)	White	White	3-3/16" x 4-15/16"	Round
ASD-CD-PR-MV-2D15AC-WH	2 inch	15W	120-277 V	0-10 V	1,071/1,087/1,042/1,081/1,041 lm	5CCT (2,700/3,000/3,500/4,000/5,000 K)	White	White	3-3/16" x 4-15/16"	Round
ASD-CD-CR-2D15AC-CH/WH	2 inch	15W	120 V	TRIAC	830/842/934/1,011/964 lm	5CCT (2,700/3,000/3,500/4,000/5,000 K)	Chrome	White	3-3/16" x 4-7/8"	Round
ASD-CD-CR-2D15AC-CH/BK	2 inch	15W	120 V	TRIAC	830/842/934/1,011/964 lm	5CCT (2,700/3,000/3,500/4,000/5,000 K)	Chrome	Black	3-3/16" x 4-7/8"	Round
<b>CD SQUARE</b>										
ASD-CD-PS-2D8AC-WH	2 inch	8W	120 V	TRIAC	600/534/584/612/615 lm	5CCT (2,700/3,000/3,500/4,000/5,000 K)	White	White	3-3/16" x 2-7/8"	Square
ASD-CD-PS-2D15AC-WH	2 inch	15W	120 V	TRIAC	830/923/1,015/1,103/987 lm	5CCT (2,700/3,000/3,500/4,000/5,000 K)	White	White	3-3/16" x 4-7/8"	Square

For most up-to-date spec sheets please refer to [asd-lighting.com](http://asd-lighting.com)



# LED DOWNLIGHT 2 INCH

## PRODUCT SPECIFICATIONS:

Construction & Materials							
Housing	Aluminum						
Lens	PC						
Reflector color	White, Chrome						
Trim color	White, Black						
Weight	ASD-CD-PR-2D8AC-WH	1 lb (0.5 kg)	ASD-CD-CR-2D15AC-CH/WH	1.3 lb (0.6 kg)			
	ASD-CD-CR-2D8AC-CH/BK	0.8 lb (0.4 kg)	ASD-CD-CR-2D15AC-CH/BK				
	ASD-CD-CR-2D8AC-CH/WH		ASD-CD-PS-2D8AC-WH	1 lb (0.5 kg)			
	ASD-CD-PR-2D15AC-WH	1.2 lb (0.5 kg)	ASD-CD-PS-2D15AC-WH	1.2 lb (0.5 kg)			
	ASD-CD-PR-MV-2D15AC-WH						
Environmental system							
Work environment	Suitable for Wet Locations, IP54						
Operating temperature	-4°F to 104°F (-20°C to 40°C)						
L-70 Life	> 50,000 hrs						
Optical system							
Luminous flux	ASD-CD-PR-2D8AC-WH	600/561/615/645/649 lm	ASD-CD-CR-2D15AC-CH/WH	830/842/934/1,011/964 lm			
	ASD-CD-CR-2D8AC-CH/BK	600/536/584/609/606 lm	ASD-CD-CR-2D15AC-CH/BK				
	ASD-CD-CR-2D8AC-CH/WH		ASD-CD-PS-2D8AC-WH	600/534/584/612/615 lm			
	ASD-CD-PR-2D15AC-WH	830/978/1,078/1,110/1,023 lm	ASD-CD-PS-2D15AC-WH	830/923/1,015/1,103/987 lm			
	ASD-CD-PR-MV-2D15AC-WH	1,071/1,087/1,042/1,081/1,041 lm					
Color temperature	5CCT (2,700/3,000/3,500/4,000/5,000 K)						
CRI	> 90						
Electrical system							
Input voltage	120 V		for MV model: 120-277 V				
Max input current	ASD-CD-PR-2D8AC-WH	0.08 A	ASD-CD-CR-2D15AC-CH/WH	0.15 A			
	ASD-CD-CR-2D8AC-CH/BK		ASD-CD-CR-2D15AC-CH/BK				
	ASD-CD-CR-2D8AC-CH/WH		ASD-CD-PS-2D8AC-WH	0.08 A			
	ASD-CD-PR-2D15AC-WH	0.15 A	ASD-CD-PS-2D15AC-WH	0.15 A			
	ASD-CD-PR-MV-2D15AC-WH	0.12 A					
Inrush current (Action time)	4 A (0.5 S)						
Off state power	0W						
Power consumption	ASD-CD-PR-2D8AC-WH	8W	ASD-CD-CR-2D15AC-CH/WH	15W			
	ASD-CD-CR-2D8AC-CH/BK		ASD-CD-CR-2D15AC-CH/BK				
	ASD-CD-CR-2D8AC-CH/WH		ASD-CD-PS-2D8AC-WH	8W			
	ASD-CD-PR-2D15AC-WH	15W	ASD-CD-PS-2D15AC-WH	15W			
	ASD-CD-PR-MV-2D15AC-WH						
Power factor	> 0.9						
Output voltage	36 V						
Max output current	ASD-CD-PR-2D8AC-WH	0.18 A	ASD-CD-CR-2D15AC-CH/WH	0.32 A			
	ASD-CD-CR-2D8AC-CH/BK		ASD-CD-CR-2D15AC-CH/BK				
	ASD-CD-CR-2D8AC-CH/WH		ASD-CD-PS-2D8AC-WH	0.27 A			
	ASD-CD-PR-2D15AC-WH	0.32 A	ASD-CD-PS-2D15AC-WH	0.32 A			
	ASD-CD-PR-MV-2D15AC-WH						
Surge protection DM/CM	2.5 kV / 2.5 kV						
Dimming compatible controls for TRIAC							
Brand	Lutron			Leviton		Cooper	
Models	DMD-LE3-D	DVCL-153P	PD-6WCL	IPL06-10Z	6672	SI06P	
	SFTU-5A3P	CTCL-153P	DV-600P	DSL06	6621		
Dimming compatible controls for 0-10 V							
Brand	Lutron			Philips	Leviton	Lightolier Controls	Watt Stopper
Models	Nova T - NTFTV	Divva - NFTV	Divva - DVTV	Sunrise - SR1200ZTUNV	Illumitech - IP7	ZP600FAM120	DCLV1

### Regular and voluntary certifications

5-year limited warranty  
 Energy Star listed  
 cETLus certified 5003560

## PACKAGE CONTENTS:

Description	Q-ty
LED Downlight 2 inch	1
Template (A)	1
Box	1

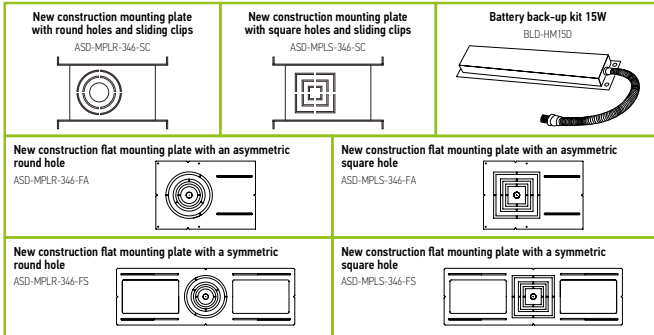


For most up-to-date spec sheets please refer to [asd-lighting.com](http://asd-lighting.com)



# LED DOWNLIGHT 2 INCH

## ACCESSORIES (sold separately):



## ACCESSORY COMPATIBILITY LIST:

Accessories	Models						
	New construction mounting plate with round holes and sliding clips ASD-MPLR-346-SC	New construction mounting plate with square holes and sliding clips ASD-MPLS-346-SC	New construction flat mounting plate with an asymmetric round hole ASD-MPLR-346-FA	New construction flat mounting plate with an asymmetric square hole ASD-MPLS-346-FA	New construction flat mounting plate with a symmetric round hole ASD-MPLR-346-FS	New construction flat mounting plate with a symmetric square hole ASD-MPLS-346-FS	Battery back-up kit 15W BLD-HM15D
ASD-CD-PR-2D8AC-WH	•		•				•
ASD-CD-CR-2D8AC-CH/WH	•		•				•
ASD-CD-CR-2D8AC-CH/BK	•		•				•
ASD-CD-PR-2D15AC-WH	•		•				•
ASD-CD-PR-MV-2D15AC-WH	•		•				•
ASD-CD-CR-2D15AC-CH/WH	•		•				•
ASD-CD-CR-2D15AC-CH/BK	•		•				•
ASD-CD-PS-2D8AC-WH		•			•	•	•
ASD-CD-PS-2D15AC-WH		•			•	•	•

## INSTALLATION GUIDE

### IMPORTANT SAFETY INFORMATION:

Please read all the instructions below before installation.

- ▶ Make sure that the supply voltage corresponds to the rated product voltage.
- ▶ The product must be installed by a qualified electrician in accordance with the National Electrical Code and corresponding local codes.
- ▶ If the product is damaged, do not use it.

### ⚠ WARNING

**RISK OF PERSONAL INJURY – READ and follow all WARNINGS and installation instructions.** Keep or give to the owner for future reference.

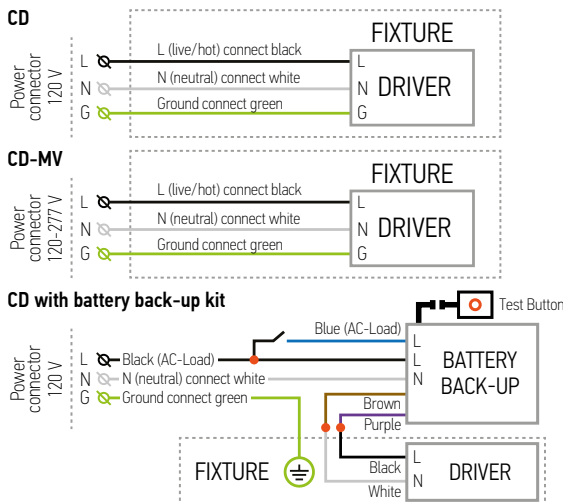
**Risk of cuts:** Wear gloves to prevent cuts or abrasions when removing from carton, handling, installing, and maintaining this product.

**Risk of electric shock:** This product must be installed in accordance with the applicable installation code by a person familiar with the construction and operation of the product and the hazards involved.

**Risk of Fire:** Minimum 194°F supply conductors. Consult a qualified electrician to ensure correct branch circuit conductor.

ASD® assumes no responsibility for claims arising out of improper or careless installation or handling of this product.

## ELECTRICAL SCHEMATIC DIAGRAM:

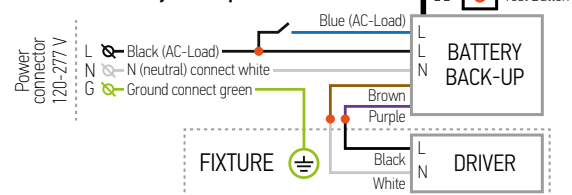


## BATTERY BACK-UP KIT INFORMATION

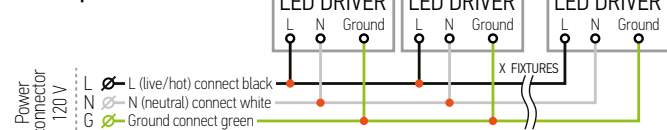
**BLD-HM15D** sold separately:

Specifications	
Input voltage	100-347 VAC, 50/60 Hz
Input current	≤ 100 mA
Output voltage	≤ 175 V DC
Output power	15W
Lumen	1,000 lm
Application	< 100W (0/1-10 V Dimmable fixture)
Ambient temperature	30°F to 122°F (0°C to 50°C)

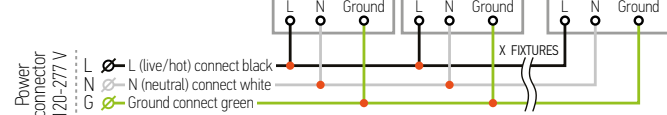
### CD-MV with battery back-up kit



### CD multiple fixture connection



### CD-MV multiple fixture connection



Recommended wire thickness should not exceed 18AWG.

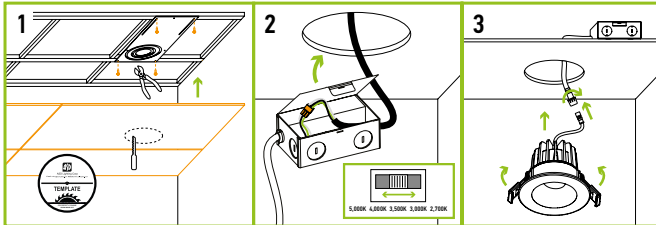
For most up-to-date spec sheets please refer to [asd-lighting.com](http://asd-lighting.com)



# LED DOWNLIGHT 2 INCH

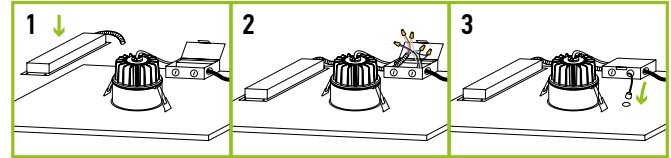
## INSTALLATION STEPS:

1. Remove 3 inch central circle on the mounting plate. Place the mounting plate and secure its position with the screws on the beams. Install drywall board. Cut a hole in the ceiling using template (included).
2. Connect the wires: Black to Black, White to White, Green to Green. Select the color temperature you need by using the switch. Put the driver box above the ceiling through the hole in the frame.
3. Connect driver box and fixture using quick connector, fold up the two spring mounting tabs and release as the fixture is placed into the mounting hole.



## INSTALLATION BATTERY BACK-UP KIT:

1. Secure the battery back-up kit to the ceiling.
2. Connect wires as shown on electrical diagram.
3. Connect test switch and affix it in the hole on the surface.



## ORDERING INFORMATION

Model	UPC	Pcs. per carton	Carton size	Carton weight	GTIN 14
<b>CD ROUND</b>					
ASD-CD-PR-2D8AC-WH	810050736541	18	14.8" x 10.8" x 13.4"	21.5 lb	10810050736548
ASD-CD-CR-2D8AC-CH/WH	810050737920	18	14.8" x 10.8" x 13.4"	19 lb	10810050737927
ASD-CD-CR-2D8AC-CH/BK	810050737913	18	14.8" x 10.8" x 13.4"	19 lb	10810050737910
ASD-CD-PR-2D15AC-WH	810050736565	18	13" x 12.8" x 18.1"	26.8 lb	10810050736562
ASD-CD-PR-MV-2D15AC-WH	810050739481	18	13" x 12.8" x 18.1"	26.8 lb	10810050739488
ASD-CD-CR-2D15AC-CH/WH	810050737944	18	13" x 12.8" x 18.1"	27.6 lb	10810050737941
ASD-CD-CR-2D15AC-CH/BK	810050737937	18	13" x 12.8" x 18.1"	27.6 lb	10810050737934
<b>CD SQUARE</b>					
ASD-CD-PS-2D8AC-WH	810050736572	18	14.8" x 10.8" x 13.4"	21.5 lb	10810050736579
ASD-CD-PS-2D15AC-WH	810050736589	18	13" x 12.8" x 18.1"	26.8 lb	10810050736586

## ACCESSORIES:

Model	Name	Weight	Dimensions	UPC				
ASD-MPLR-346-SC-6PACK	New construction mounting plate with round holes and sliding clips	1.1 lb	14-3/8" x 10-9/16" x 1-5/8"	810050739337				
ASD-MPLS-346-SC	New construction mounting plate with square holes and sliding clips	1.1 lb	14-3/8" x 10-9/16" x 1-5/8"	810050731843				
ASD-MPLR-346-FA-6PACK	New construction flat mounting plate with an asymmetric round hole	0.9 lb	13-1/4" x 9-1/16" x 1/16"	810050739344				
ASD-MPLS-346-FA	New construction flat mounting plate with an asymmetric square hole	0.9 lb	13-1/4" x 9-1/16" x 1/16"	810050733861				
ASD-MPLR-346-FS-6PACK	New construction flat mounting plate with a symmetric round hole	1 lb	26" x 8-1/4" x 1/16"	810050739351				
ASD-MPLS-346-FS	New construction flat mounting plate with a symmetric square hole	1 lb	26" x 8-1/4" x 1/16"	810050733885				
BLD-HM15D	Battery back-up kit 15W	2.4 lb	12-15/16" x 1-7/16" x 15/16"	810050734882				
Model	Pcs. in middle box	Middle box size	Middle box weight	GTIN 14 in middle box	Pcs. per carton	Carton size	Carton weight	GTIN 14 in carton
ASD-MPLR-346-SC-6PACK	-	-	-	-	2	17.3" x 11.9" x 13.4"	17 lb	10810050739334
ASD-MPLS-346-SC	6	15" x 11.2" x 7.5"	7.5 lb	10810050731840	12	23.2" x 15.6" x 8.3"	16.4 lb	20810050731847
ASD-MPLR-346-FA-6PACK	-	-	-	-	4	14.4" x 9.8" x 3.1"	22.5 lb	10810050739341
ASD-MPLS-346-FA	6	9.3" x 0.6" x 13.6"	5.5 lb	10810050733868	24	14.4" x 9.8" x 3.1"	22.9 lb	20810050733865
ASD-MPLR-346-FS-6PACK	-	-	-	-	4	27.2" x 9.1" x 3.1"	25.2 lb	10810050739358
ASD-MPLS-346-FS	6	8.5" x 0.6" x 26.4"	6 lb	10810050733882	24	27.2" x 9.1" x 3.1"	24.6 lb	20810050733889
BLD-HM15D	-	-	-	-	10	18.5" x 13.4" x 11.8"	25.6 lb	10810050734889

For most up-to-date spec sheets please refer to [asd-lighting.com](http://asd-lighting.com)