



LED VAPORPROOF NSF FIXTURE

► **DESIGN & OPTIONS** - NSF LED VAPOR PROOF FIXTURE has best in class performance at up to 130lm/w output. They feature a smooth dust-proof surface with a watertight seal that can withstand high pressure wash downs. The fixture is equipped with a 0-10V dimmable driver. The tube style body comes with a 120-277V, 5,000K color temperature and two sizes: 4' and 8'.

► **INSTALLATION** - This fixture comes with a 5ft cable to make the installation process easier. It can be surface or suspended mounted. Refer to install instructions for detailed steps.

► **APPLICATION** - These fixtures are ideal for areas with high standards of sanitation and are required to be frequently washed down. Common applications include: poultry processing, food & beverage processing, commercial kitchens, and manufacturing facilities. This fixture is IP67 and IP69K rated and is resistant to high pressure, temperature, water, and dust. Fixture can operate in temperatures between -22 to 131°F (-30 to 55°C).

► **ENERGY SAVINGS & EFFICIENCY** - With a calculated lifespan up to 129,000 hours, these fixtures are made to last decades under normal operation! This fixture can cut your electric bill by up to 80% instantly and will save you a significant amount of money in its lifetime.

► **CERTIFICATION & WARRANTY** - Buy with confidence: ASD provides a 5-year limited warranty along with UL certification to guarantee top quality products and safety!

Certified by the National Sanitation Foundation (NSF) as safe for food service processing facilities that require a higher level of sanitation.

DLC Premium classification allows participation in rebates; please check the rebate programs available in your state.

Catalog number	
Notes	
Type	



Model	Size	Watts	Voltage	Dimmable	Lumens	CCT	Dimensions (LxWxH)	Cord
ASD-LVP-FS-4D3450	4 ft	34W	120-277 V	0-10 V	4,527 lm	5,000 K	49-5/8" x 3-7/8" x 3-3/8"	5 ft
ASD-LVP-FS-4D5850	4 ft	58W	120-277 V	0-10 V	7,802 lm	5,000 K	49-5/8" x 3-7/8" x 3-3/8"	5 ft
ASD-LVP-FS-4D8050	4 ft	80W	120-277 V	0-10 V	10,811 lm	5,000 K	49-5/8" x 3-7/8" x 3-3/8"	5 ft
ASD-LVP-FS-8D10050	8 ft	100W	120-277 V	0-10 V	13,514 lm	5,000 K	95-3/8" x 3-7/8" x 3-3/8"	5 ft

ORDERING INFORMATION

Model	UPC	Pcs. per carton	Carton size	Carton weight	GTIN 14
ASD-LVP-FS-4D3450	819201025619	6	53"x14.2"x8.3"	46.3 lbs	10819201025616
ASD-LVP-FS-4D5850	819201025633	6	53"x14.2"x8.3"	46.3 lbs	10819201025630
ASD-LVP-FS-4D8050	819201025640	6	53"x14.2"x8.3"	46.3 lbs	10819201025647
ASD-LVP-FS-8D10050	819201025657	6	97.6"x14.2"x8.3"	75 lbs	10819201025654

For most up-to-date spec sheets please refer to asd-lighting.com

ASD LIGHTING CORP

E-mail: orders@asd-lighting.com | Web site: www.asd-lighting.com





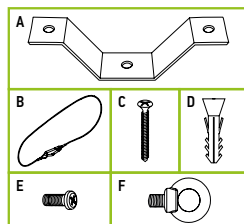
LED VAPORPROOF NSF FIXTURE

PRODUCT SPECIFICATIONS:

Construction & Materials				
Housing	Aluminum			
Lens	Polycarbonate			
Finish color	Gray			
Weight	ASD-LVP-FS-4D3450	6.2 lb (2.8 kg)		
	ASD-LVP-FS-4D5850			
	ASD-LVP-FS-4D8050			
	ASD-LVP-FS-8D10050	9.9 lb (4.5 kg)		
Environmental system				
Work environment	Suitable for Wet Locations, IP67/IP69K			
Operating temperature	22°F to 131°F (-30°C to 55°C)			
L-70 Life	R > 72,000 hrs; C > 129,000 hrs			
Optical system				
Luminous flux	ASD-LVP-FS-4D3450	4,527 lm		
	ASD-LVP-FS-4D5850	7,802 lm		
	ASD-LVP-FS-4D8050	10,811 lm		
	ASD-LVP-FS-8D10050	13,514 lm		
Color temperature	5,000 K			
CRI	> 80			
Electrical system				
Input voltage	120-277 V			
Max input current	ASD-LVP-FS-4D3450	0.28 A		
	ASD-LVP-FS-4D5850	0.48 A		
	ASD-LVP-FS-4D8050	0.67 A		
	ASD-LVP-FS-8D10050	0.83 A		
Inrush current (Action time)	35 A (1 S)			
AC input range	min 108 V max 305 V			
Off state power	0W			
Power consumption	ASD-LVP-FS-4D3450	34W		
	ASD-LVP-FS-4D5850	58W		
	ASD-LVP-FS-4D8050	80W		
	ASD-LVP-FS-8D10050	100W		
Power factor	> 0.9			
Output voltage	ASD-LVP-FS-4D3450	50 V		
	ASD-LVP-FS-4D5850	46 V		
	ASD-LVP-FS-4D8050	45 V		
	ASD-LVP-FS-8D10050	44 V		
Max output current	ASD-LVP-FS-4D3450	750 mA		
	ASD-LVP-FS-4D5850	1.3 A		
	ASD-LVP-FS-4D8050	1.7 A		
	ASD-LVP-FS-8D10050	2.2 A		
Surge protection DM/CM	1 kV / 2 kV			
LED driver class	Class 2			
Dimming compatible controls				
Brand	Lutron	Eaton	Cooper	Leviton
Models	DVSTV-WH	DF10P-C1	SF10P-W	DS710-10Z
Regular and voluntary certifications				
5-year limited warranty				
DesignLights Consortium (DLC) listed (Classification: Premium) Main: Indoor Luminaires; General Application: Linear Ambient; Primary Use: Direct Linear Ambient Luminaires				
UL certified E473804				
National Sanitation Foundation				

PACKAGE CONTENTS:

Description	Q-ty
LED Vaporproof NSF Fixture	1
Crossbar 5.1" x 0.73" x 0.04" (A)	2
Aircraft cable 118" (B)	2
Screw for anchor 4*30 (C)	4
Plastic anchor 6*30 (D)	4
Screw M4*12 (E)	2
Eye bolt (F)	2
Box	1



INSTALLATION GUIDE

IMPORTANT SAFETY INFORMATION:

Please read all the instructions below before installation.

- ▶ Make sure that the supply voltage corresponds to the rated product voltage.
- ▶ The product must be installed by a qualified electrician in accordance with the National Electrical Code and corresponding local codes.
- ▶ If the product is damaged, do not use it.

⚠ WARNING

RISK OF PERSONAL INJURY – READ and follow all WARNINGS and installation instructions.

Keep or give to the owner for future reference.

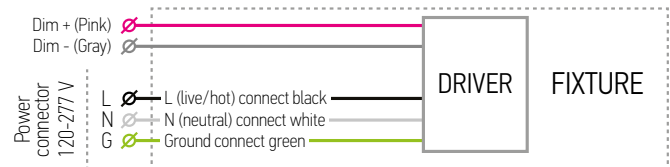
Risk of cuts: Wear gloves to prevent cuts or abrasions when removing from carton, handling, installing, and maintaining this product.

Risk of electric shock: This product must be installed in accordance with the applicable installation code by a person familiar with the construction and operation of the product and the hazards involved.

Risk of Fire: Minimum 194°F supply conductors. Consult a qualified electrician to ensure correct branch circuit conductor.

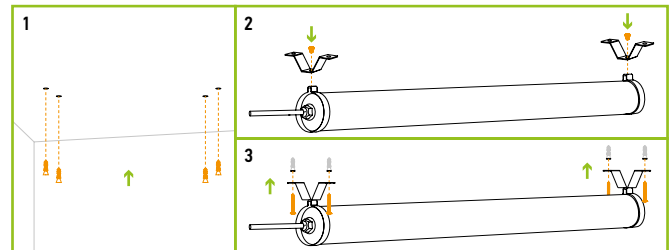
ASD® assumes no responsibility for claims arising out of improper or careless installation or handling of this product.

ELECTRICAL SCHEMATIC DIAGRAM:



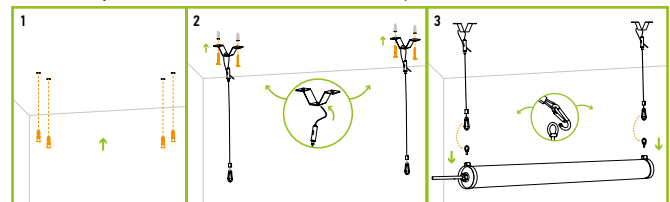
SURFACE MOUNT INSTALLATION:

1. If mounting to drywall, drill pilot holes and insert anchors.
2. Screw mounting bracket to fixture with two M4*12 screws.
3. Fasten the fixture to the ceiling using four 4*30 screws.



SUSPEND MOUNT INSTALLATION:

1. If mounting to drywall, drill pilot holes and insert anchors.
2. Fasten aircraft cable to the surface mount brackets. Fasten the brackets to the ceiling using four 4*30 screws.
3. Fasten eye bolts to either end of the fixture. Clip the fixture into the aircraft cable.



For most up-to-date spec sheets please refer to asd-lighting.com