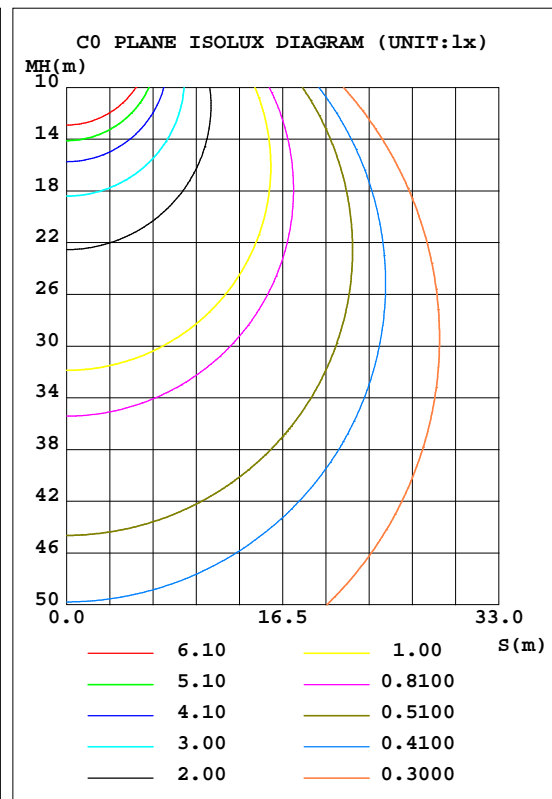
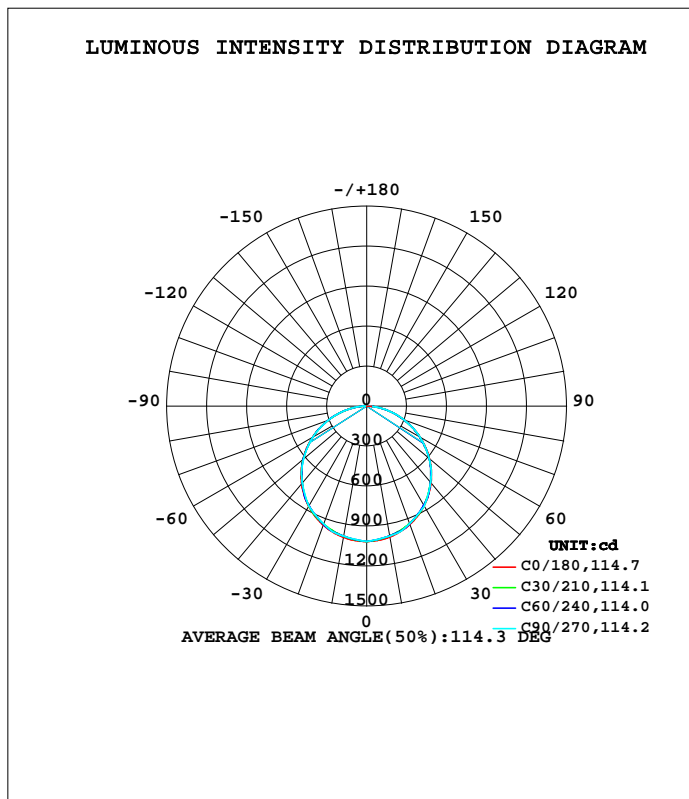


LUMINAIRE PHOTOMETRIC TEST REPORT

Test:U:120.0V I:0.2250A P:27W PF:0.9906 Lamp Flux:3213x1 lm		
NAME: ASD-ELP02-22D2750-STD	TYPE:LED PANEL	WEIGHT:
SPEC.:	DIM.: 603x603mm	SERIAL No.:BLD20170518P24
MFR.: ASD Lighting corp	SUR.:0.55*0.55	Shielding Angle:

DATA OF LAMP		PHOTOMETRIC DATA Eff: 119 lm/W			
MODEL	ASD-ELP02-22D2750-STD	I _{max} (cd)	1016	S/MH(C0/180)	1.27
NOMINAL POWER(W)	27W	LOR(%)	100.0	S/MH(C90/270)	1.27
RATED VOLTAGE(V)		TOTAL FLUX(lm)	3213	η UP, DN(C0-180)	0.0,49.8
NOMINAL FLUX(lm)	3213	CIE CLASS	DIRECT	η UP, DN(C180-360)	0.0,50.2
LAMPS INSIDE	1	η up(%)	0.0	CIBSE SHR NOM	1.25
TEST VOLTAGE(V)		η down(%)	100.0	CIBSE SHR MAX	1.35



C Range: 0 - 360DEG
 C Interval: 5.0DEG
 Test Speed: HIGH
 Temperature:22DEG
 Operators:NEIKO
 Test Date:2017-07-26

γ Range: 0 - 180DEG
 γ Interval: 0.5DEG
 Test System:EVERFINE GO-2000B_V1 SYSTEM V2.0.350
 Humidity:55%
 Test Distance:12.218m [K=1.0000]
 Remarks:

ZONAL FLUX DIAGRAM

ZONAL FLUX DIAGRAM:

γ	C0	C45	C90	C135	C180	C225	C270	C315	γ	Φ zone	Φ total	%lum,lamp
5	1011	1004	1003	1005	1013	1006	1004	1005	0- 5	24.14	24.14	0.81,0.81
10	998.0	988.5	990.2	990.2	1001	991.1	991.5	989.4	5- 10	71.42	95.57	3.21,3.21
15	976.2	968.7	974.8	971.1	980.1	972.4	976.7	970.1	10- 15	116.5	212.1	7.12,7.12
20	946.3	944.2	939.9	947.4	951.6	949.0	942.3	946.0	15- 20	157.9	370.0	12.4,12.4
25	908.5	903.0	902.5	907.0	914.8	909.0	905.5	905.3	20- 25	193.8	563.8	18.9,18.9
30	863.2	855.2	865.2	860.0	870.4	862.3	868.6	857.9	25- 30	223.6	787.4	26.4,26.4
35	810.9	805.0	806.0	810.6	819.1	813.4	810.5	808.2	30- 35	246.3	1034	34.7,34.7
40	751.9	750.4	746.8	756.8	760.9	759.8	752.3	754.0	35- 40	260.4	1294	43.5,43.5
45	686.8	680.4	686.0	686.9	696.1	690.6	692.4	684.8	40- 45	266.3	1560	52.4,52.4
50	616.1	609.8	612.1	616.4	626.1	620.6	618.9	614.9	45- 50	263.6	1824	61.3,61.3
55	540.6	538.3	536.5	544.6	551.4	549.1	543.6	543.6	50- 55	251.8	2076	69.7,69.7
60	461.2	455.4	460.9	462.8	470.5	467.2	468.3	461.6	55- 60	232.1	2308	77.5,77.5
65	379.1	374.1	377.4	381.7	387.5	386.0	385.1	380.7	60- 65	205.2	2513	84.4,84.4
70	295.1	292.2	294.1	299.5	302.6	303.6	302.2	299.2	65- 70	171.9	2685	90.2,90.2
75	211.9	209.5	211.6	215.7	217.9	219.7	220.2	216.7	70- 75	134.0	2819	94.7,94.7
80	131.3	128.8	131.6	133.9	136.7	138.1	140.0	136.1	75- 80	93.17	2912	97.8,97.8
85	47.22	54.79	55.41	57.96	44.11	62.07	62.75	59.83	80- 85	51.50	2964	99.5,99.5
90	0.7203	2.570	5.506	3.255	1.202	4.984	8.589	3.623	85- 90	13.02	2977	100,100
95	0	0	0	0	0	0	0	0	90- 95	0.4685	2977	100,100
100	0	0	0	0	0	0	0	0	95-100	0	2977	100,100
105	0	0	0	0	0	0	0	0	100-105	0	2977	100,100
110	0	0	0	0	0	0	0	0	105-110	0	2977	100,100
115	0	0	0	0	0	0	0	0	110-115	0	2977	100,100
120	0	0	0	0	0	0	0	0	115-120	0	2977	100,100
125	0	0	0	0	0	0	0	0	120-125	0	2977	100,100
130	0	0	0	0	0	0	0	0	125-130	0	2977	100,100
135	0	0	0	0	0	0	0	0	130-135	0	2977	100,100
140	0	0	0	0	0	0	0	0	135-140	0	2977	100,100
145	0	0	0	0	0	0	0	0	140-145	0	2977	100,100
150	0	0	0	0	0	0	0	0	145-150	0	2977	100,100
155	0	0	0	0	0	0	0	0	150-155	0	2977	100,100
160	0	0	0	0	0	0	0	0	155-160	0	2977	100,100
165	0	0	0	0	0	0	0	0	160-165	0	2977	100,100
170	0	0	0	0	0	0	0	0	165-170	0	2977	100,100
175	0	0	0	0	0	0	0	0	170-175	0	2977	100,100
180	0	0	0	0	0	0	0	0	175-180	0	2977	100,100
DEG	LUMINOUS INTENSITY:cd								UNIT:lm			

Conical surface Flux(90deg): 1560.4 lm

%lum = 52.4%
%lamp = 52.4%

Conical surface Flux(120deg): 2307.8 lm

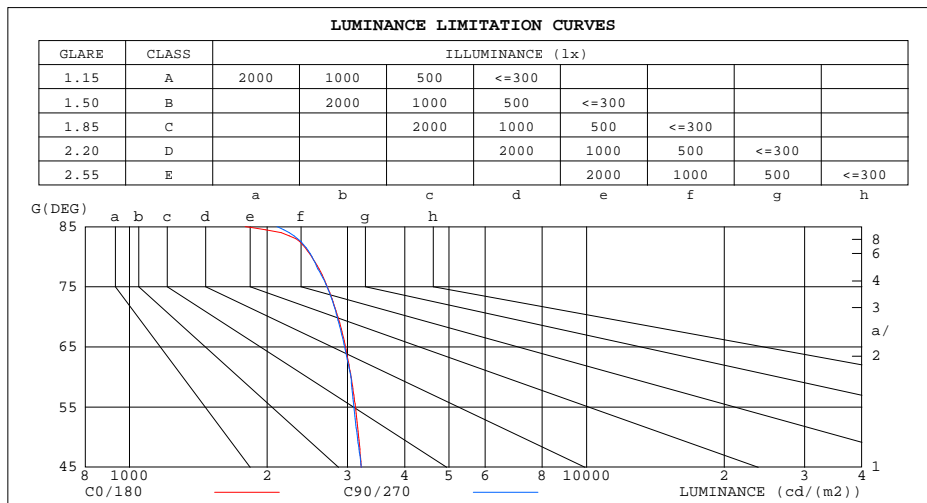
%lum = 77.5%
%lamp = 77.5%

C Range: 0 - 360DEG
C Interval: 5.0DEG
Test Speed: HIGH
Temperature:22DEG
Operators:NEIKO
Test Date:2017-07-26

γ Range: 0 - 180DEG
γ Interval: 0.5DEG
Test System:EVERFINE GO-2000B_V1 SYSTEM V2.0.350
Humidity:55%
Test Distance:12.218m [K=1.0000]
Remarks:

LUMINANCE LIMITATION CURVES

Test:U:120.0V I:0.2250A P:27W PF:0.9906 Lamp Flux:3213x1 lm		
NAME: ASD-ELP02-22D2750-STD	TYPE:LED PANEL	WEIGHT:
SPEC.:	DIM.: 603x603mm	SERIAL No.:BLD20170518P24
MFR.: ASD Lighting corp	SUR.:0.55*0.55	Shielding Angle:



LUMINANCE cd/(m2)		
G(DEG)	C0/180	C90/270
85	1794	2105
80	2504	2510
75	2711	2707
70	2857	2847
65	2970	2957
60	3054	3052
55	3121	3097
50	3174	3153
45	3216	3212

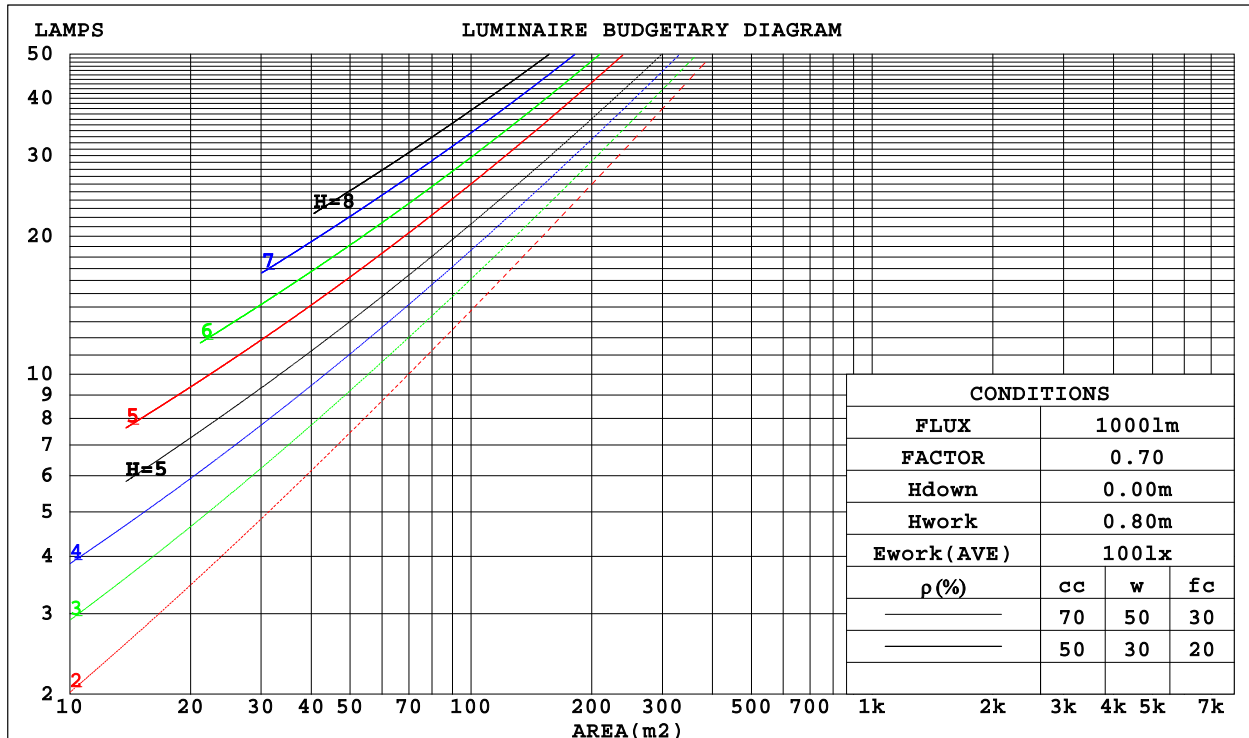
C Range: 0 - 360DEG
 C Interval: 5.0DEG
 Test Speed: HIGH
 Temperature:22DEG
 Operators:NEIKO
 Test Date:2017-07-26

γ Range: 0 - 180DEG
 γ Interval: 0.5DEG
 Test System:EVERFINE GO-2000B_V1 SYSTEM V2.0.350
 Humidity:55%
 Test Distance:12.218m [K=1.0000]
 Remarks:

CU AND LUMINAIRE BUDGETARY ESTIMATE DIAGRAM

Test:U:120.0V I:0.2250A P:27W PF:0.9906 Lamp Flux:3213x1 lm		
NAME: ASD-ELP02-22D2750-STD	TYPE:LED PANEL	WEIGHT:
SPEC.:	DIM.: 603x603mm	SERIAL No.:BLD20170518P24
MFR.: ASD Lighting corp	SUR.:0.55*0.55	Shielding Angle:

ρ_{cc}	80%			70%			50%			30%			10%			0
ρ_w	50%	30%	10%	50%	30%	10%	50%	30%	10%	50%	30%	10%	50%	30%	10%	0
ρ_{fc}	20%			20%			20%			20%			20%			0
RCR	RCR:Room Cavity Ratio						Coefficients of Utilization(CU)									
0.0	1.19	1.19	1.19	1.16	1.16	1.16	1.11	1.11	1.11	1.06	1.06	1.06	1.02	1.02	1.02	.00
1.0	1.03	.99	.95	1.01	.97	.94	.97	.94	.91	.93	.90	.88	.89	.87	.85	.83
2.0	.90	.83	.77	.88	.82	.76	.84	.79	.74	.81	.77	.73	.78	.74	.71	.69
3.0	.79	.70	.64	.77	.69	.63	.74	.67	.62	.71	.66	.61	.69	.64	.60	.58
4.0	.70	.61	.54	.68	.60	.53	.66	.58	.53	.63	.57	.52	.61	.56	.51	.49
5.0	.62	.53	.46	.61	.52	.46	.59	.51	.45	.57	.50	.45	.55	.49	.44	.42
6.0	.56	.47	.40	.55	.46	.40	.53	.45	.40	.51	.45	.39	.50	.44	.39	.37
7.0	.51	.42	.35	.50	.41	.35	.48	.41	.35	.47	.40	.35	.45	.39	.34	.32
8.0	.46	.37	.32	.45	.37	.31	.44	.37	.31	.43	.36	.31	.42	.35	.31	.29
9.0	.42	.34	.28	.42	.34	.28	.41	.33	.28	.39	.33	.28	.38	.32	.28	.26
10.0	.39	.31	.26	.38	.31	.26	.37	.30	.25	.37	.30	.25	.36	.30	.25	.23



C Range: 0 - 360DEG
 C Interval: 5.0DEG
 Test Speed: HIGH
 Temperature:22DEG
 Operators:NEIKO
 Test Date:2017-07-26

γ Range: 0 - 180DEG
 γ Interval: 0.5DEG
 Test System:EVERFINE GO-2000B_V1 SYSTEM V2.0.350
 Humidity:55%
 Test Distance:12.218m [K=1.0000]
 Remarks:

WEC AND CCEC

Test:U:120.0V I:0.2250A P:27W PF:0.9906 Lamp Flux:3213x1 lm		
NAME: ASD-ELP02-22D2750-STD	TYPE:LED PANEL	WEIGHT:
SPEC.:	DIM.: 603x603mm	SERIAL No.:BLD20170518P24
MFR.: ASD Lighting corp	SUR.:0.55*0.55	Shielding Angle:

pcc	80%			70%			50%			30%			10%			0
pw	50%	30%	10%	50%	30%	10%	50%	30%	10%	50%	30%	10%	50%	30%	10%	0
pfc	20%			20%			20%			20%			20%			0
RCR	RCR:Room Cavity Ratio						Wall Exitance Coefficients(WEC)									
0.0																
1.0	.317	.180	.057	.310	.177	.056	.297	.170	.054	.285	.164	.053	.273	.158	.051	
2.0	.297	.163	.050	.291	.160	.049	.279	.155	.048	.268	.150	.047	.258	.146	.046	
3.0	.274	.146	.044	.269	.144	.043	.258	.140	.043	.249	.136	.042	.240	.133	.041	
4.0	.252	.131	.039	.247	.130	.038	.238	.126	.038	.230	.123	.037	.222	.120	.037	
5.0	.233	.119	.034	.229	.117	.034	.220	.115	.034	.213	.112	.033	.206	.110	.033	
6.0	.216	.108	.031	.212	.107	.031	.205	.105	.030	.198	.103	.030	.191	.101	.030	
7.0	.201	.099	.028	.197	.098	.028	.191	.096	.028	.184	.095	.028	.179	.093	.027	
8.0	.187	.091	.026	.184	.091	.026	.178	.089	.025	.173	.088	.025	.168	.086	.025	
9.0	.175	.085	.024	.172	.084	.024	.167	.083	.023	.162	.081	.023	.158	.080	.023	
10.0	.165	.079	.022	.162	.078	.022	.157	.077	.022	.153	.076	.022	.149	.075	.021	

pcc	80%			70%			50%			30%			10%			0
pw	50%	30%	10%	50%	30%	10%	50%	30%	10%	50%	30%	10%	50%	30%	10%	0
pfc	20%			20%			20%			20%			20%			0
RCR	RCR:Room Cavity Ratio						Ceiling Cavity Exitance Coefficients(CCEC)									
0.0	.191	.191	.191	.163	.163	.163	.111	.111	.111	.064	.064	.064	.020	.020	.020	
1.0	.181	.156	.134	.155	.134	.115	.106	.092	.080	.061	.053	.046	.020	.017	.015	
2.0	.173	.132	.097	.148	.114	.084	.102	.079	.059	.059	.046	.034	.019	.015	.011	
3.0	.165	.114	.074	.142	.099	.064	.097	.069	.045	.056	.040	.026	.018	.013	.009	
4.0	.158	.101	.058	.135	.087	.050	.093	.061	.035	.054	.036	.021	.017	.012	.007	
5.0	.150	.091	.047	.129	.079	.041	.089	.055	.029	.052	.032	.017	.017	.011	.006	
6.0	.143	.082	.039	.123	.071	.034	.085	.050	.024	.049	.029	.014	.016	.010	.005	
7.0	.136	.076	.033	.117	.066	.029	.081	.046	.020	.047	.027	.012	.015	.009	.004	
8.0	.130	.070	.029	.112	.061	.025	.077	.042	.018	.045	.025	.011	.015	.008	.003	
9.0	.124	.065	.025	.106	.056	.022	.074	.040	.016	.043	.023	.009	.014	.008	.003	
10.0	.118	.061	.022	.102	.053	.020	.070	.037	.014	.041	.022	.008	.013	.007	.003	

C Range: 0 - 360DEG
 C Interval: 5.0DEG
 Test Speed: HIGH
 Temperature:22DEG
 Operators:NEIKO
 Test Date:2017-07-26

γ Range: 0 - 180DEG
 γ Interval: 0.5DEG
 Test System:EVERFINE GO-2000B_V1 SYSTEM V2.0.350
 Humidity:55%
 Test Distance:12.218m [K=1.0000]
 Remarks:

UGR(Unified Glare Rating) Table

Test:U:120.0V I:0.2250A P:27W PF:0.9906 Lamp Flux:3213x1 lm										
NAME: ASD-ELP02-22D2750-STD					TYPE:LED PANEL			WEIGHT:		
SPEC.:					DIM.: 603x603mm			SERIAL No.:BLD20170518P24		
MFR.: ASD Lighting corp					SUR.:0.55*0.55			Shielding Angle:		
ceiling/cavity	0.7	0.7	0.5	0.5	0.3	0.7	0.7	0.5	0.5	0.3
walls	0.5	0.3	0.5	0.3	0.3	0.5	0.3	0.5	0.3	0.3
working plane	0.2	0.2	0.2	0.2	0.2	0.2	0.2	0.2	0.2	0.2
Room dimensions	Viewed crosswise					Viewed endwise				
x = 2H y = 2H	16.8	18.3	17.1	18.5	18.7	16.8	18.3	17.1	18.5	18.7
3H 4H 6H 8H 12H	18.4	19.8	18.7	20.0	20.3	18.4	19.8	18.7	20.0	20.3
	19.0	20.4	19.4	20.6	20.9	19.0	20.4	19.4	20.7	20.9
4H 2H	19.5	20.8	19.8	21.1	21.3	19.5	20.8	19.9	21.1	21.4
3H 4H 6H 8H	19.6	20.9	20.0	21.2	21.5	19.7	20.9	20.0	21.2	21.5
12H	19.7	20.9	20.0	21.2	21.5	19.8	21.0	20.1	21.3	21.6
8H 4H	17.4	18.8	17.7	19.0	19.3	17.4	18.8	17.7	19.0	19.3
6H 8H 12H	19.2	20.4	19.5	20.7	21.0	19.2	20.4	19.6	20.7	21.0
	20.0	21.1	20.4	21.4	21.7	20.0	21.1	20.4	21.4	21.7
12H 4H	20.6	21.6	21.0	21.9	22.3	20.6	21.6	21.0	21.9	22.3
6H	20.8	21.7	21.2	22.0	22.4	20.8	21.7	21.2	22.1	22.5
8H	20.8	21.7	21.3	22.1	22.5	21.0	21.8	21.4	22.2	22.6
	20.3	21.2	20.7	21.5	21.9	20.3	21.2	20.7	21.5	21.9
	21.0	21.8	21.5	22.2	22.6	21.1	21.8	21.5	22.2	22.6
	21.3	22.0	21.8	22.4	22.8	21.4	22.0	21.8	22.5	22.9
	21.5	22.0	21.9	22.5	23.0	21.6	22.2	22.1	22.6	23.1
	20.3	21.1	20.7	21.5	21.9	20.3	21.1	20.7	21.5	21.9
	21.1	21.8	21.6	22.2	22.6	21.1	21.8	21.6	22.2	22.7
	21.4	22.0	21.9	22.4	22.9	21.5	22.1	22.0	22.5	23.0
Variations with the observer position at spacings:										
S = 1.0H	+ 0.1 / - 0.2					+ 0.1 / - 0.2				
1.5H	+ 0.2 / - 0.3					+ 0.2 / - 0.3				
2.0H	+ 0.2 / - 0.2					+ 0.1 / - 0.3				

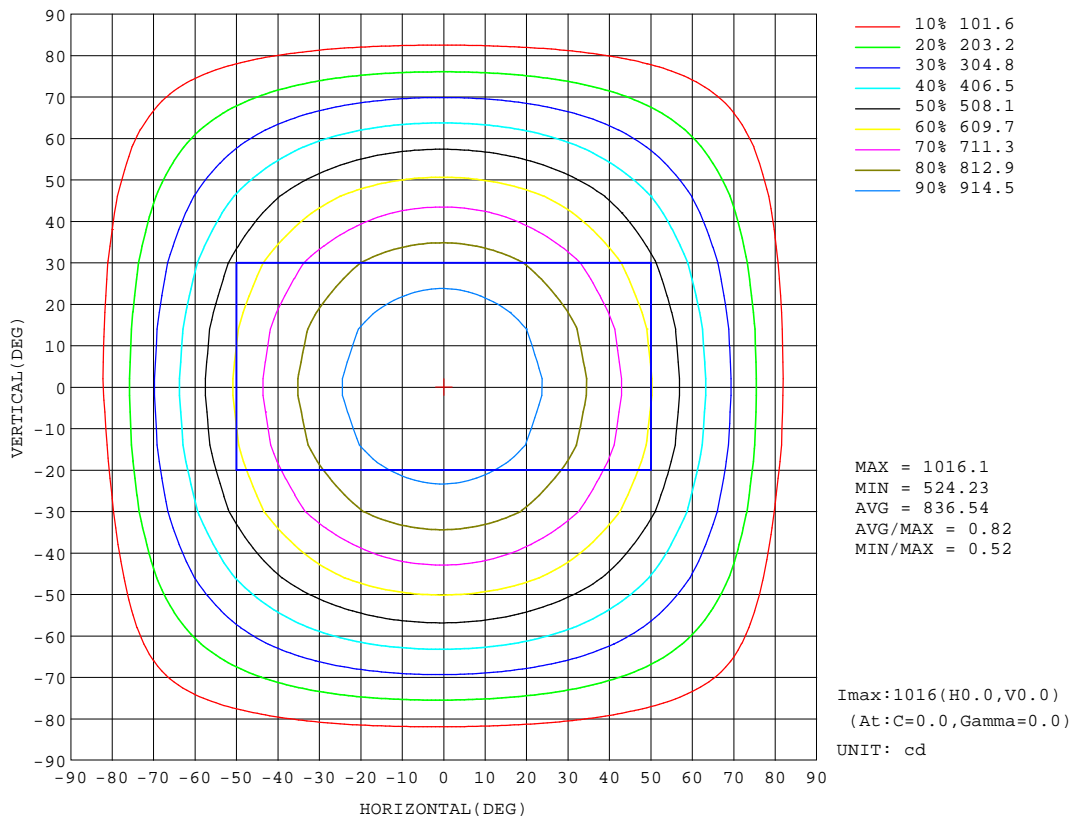
CIE Pub.117 Corrected 2977 lm Total Lamp Luminous Flux.(8log(F/F0) = 3.8)

C Range: 0 - 360DEG
C Interval: 5.0DEG
Test Speed: HIGH
Temperature:22DEG
Operators:NEIKO
Test Date:2017-07-26

γ Range: 0 - 180DEG
 γ Interval: 0.5DEG
Test System:EVERFINE GO-2000B_V1 SYSTEM V2.0.350
Humidity:55%
Test Distance:12.218m [K=1.0000]
Remarks:

ISOCANDELA DIAGRAM

Test:U:120.0V I:0.2250A P:27W PF:0.9906 Lamp Flux:3213x1 lm		
NAME: ASD-ELP02-22D2750-STD	TYPE:LED PANEL	WEIGHT:
SPEC.:	DIM.: 603x603mm	SERIAL No.:BLD20170518P24
MFR.: ASD Lighting corp	SUR.:0.55*0.55	Shielding Angle:



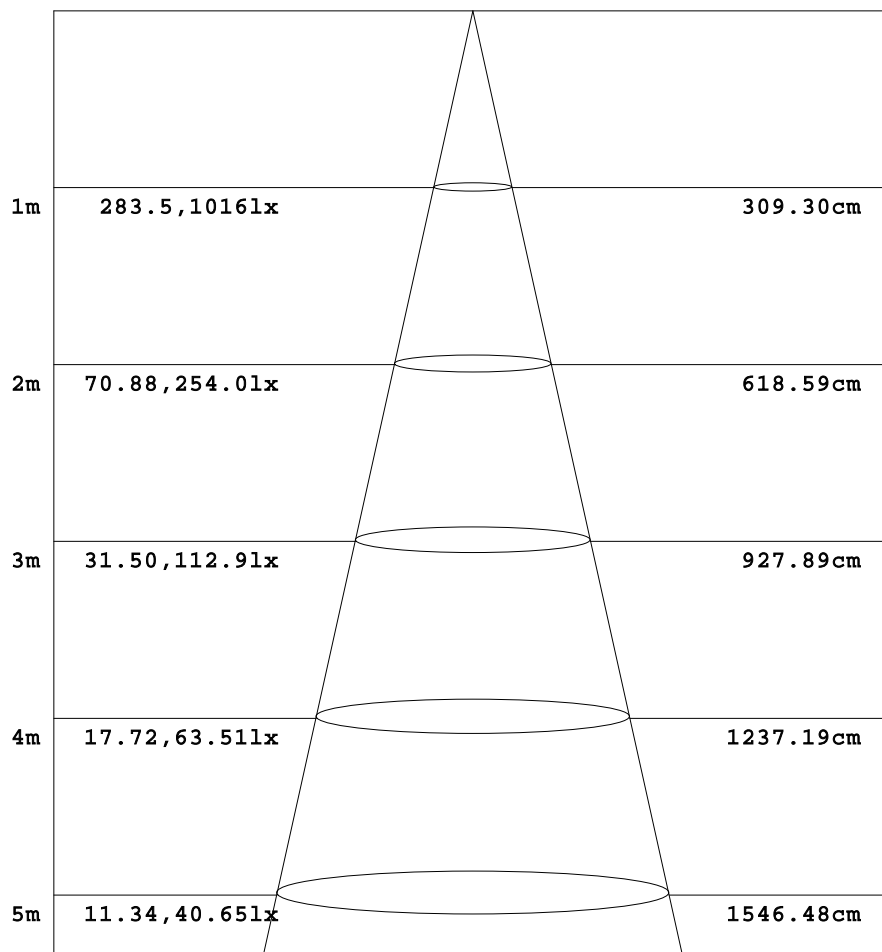
C Range: 0 - 360DEG
 C Interval: 5.0DEG
 Test Speed: HIGH
 Temperature:22DEG
 Operators:NEIKO
 Test Date:2017-07-26

γ Range: 0 - 180DEG
 γ Interval: 0.5DEG
 Test System:EVERFINE GO-2000B_V1 SYSTEM V2.0.350
 Humidity:55%
 Test Distance:12.218m [K=1.0000]
 Remarks:

AAI Figure

Test:U:120.0V I:0.2250A P:27W PF:0.9906 Lamp Flux:3213x1 lm		
NAME: ASD-ELP02-22D2750-STD	TYPE:LED PANEL	WEIGHT:
SPEC.:	DIM.: 603x603mm	SERIAL No.:BLD20170518P24
MFR.: ASD Lighting corp	SUR.:0.55*0.55	Shielding Angle:

Flux out:2195 lm



Height Eavg, Emax Angle:114.22deg Diameter

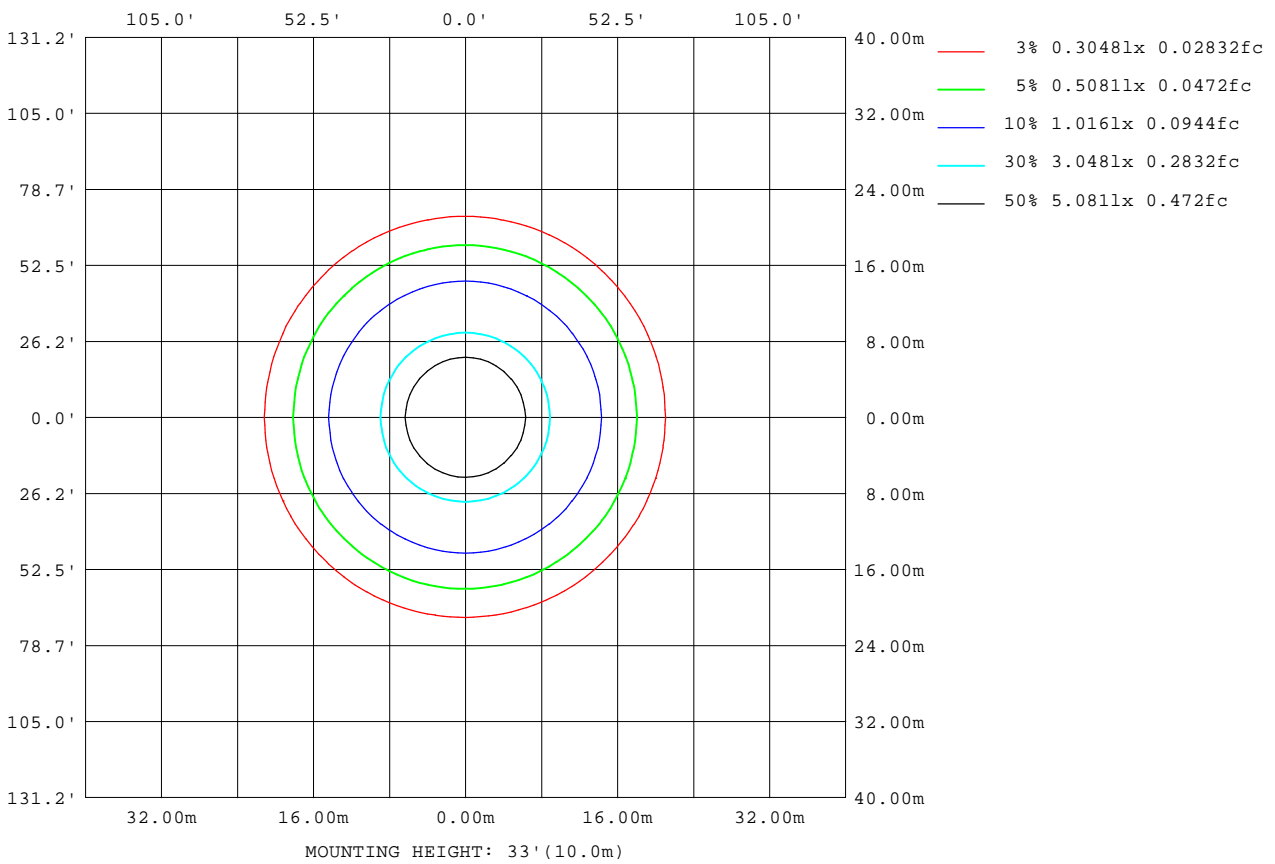
Note:The Curves indicate the illuminated area and the average illumination when the luminaire is at different distance.

C Range: 0 - 360DEG
 C Interval: 5.0DEG
 Test Speed: HIGH
 Temperature:22DEG
 Operators:NEIKO
 Test Date:2017-07-26

γ Range: 0 - 180DEG
 γ Interval: 0.5DEG
 Test System:EVERFINE GO-2000B_V1 SYSTEM V2.0.350
 Humidity:55%
 Test Distance:12.218m [K=1.0000]
 Remarks:

ISOLUX DIAGRAM

Test:U:120.0V I:0.2250A P:27W PF:0.9906 Lamp Flux:3213x1 lm		
NAME: ASD-ELP02-22D2750-STD	TYPE:LED PANEL	WEIGHT:
SPEC.:	DIM.: 603x603mm	SERIAL No.:BLD20170518P24
MFR.: ASD Lighting corp	SUR.:0.55*0.55	Shielding Angle:



C Range: 0 - 360DEG
 C Interval: 5.0DEG
 Test Speed: HIGH
 Temperature:22DEG
 Operators:NEIKO
 Test Date:2017-07-26

γ Range: 0 - 180DEG
 γ Interval: 0.5DEG
 Test System:EVERFINE GO-2000B_V1 SYSTEM V2.0.350
 Humidity:55%
 Test Distance:12.218m [K=1.0000]
 Remarks:

LED Avg.L Report

Test:U:120.0V I:0.2250A P:27W PF:0.9906 Lamp Flux:3213x1 lm		
NAME: ASD-ELP02-22D2750-STD	TYPE:LED PANEL	WEIGHT:
SPEC.:	DIM.: 603x603mm	SERIAL No.:BLD20170518P24
MFR.: ASD Lighting corp	SUR.:0.55*0.55	Shielding Angle:

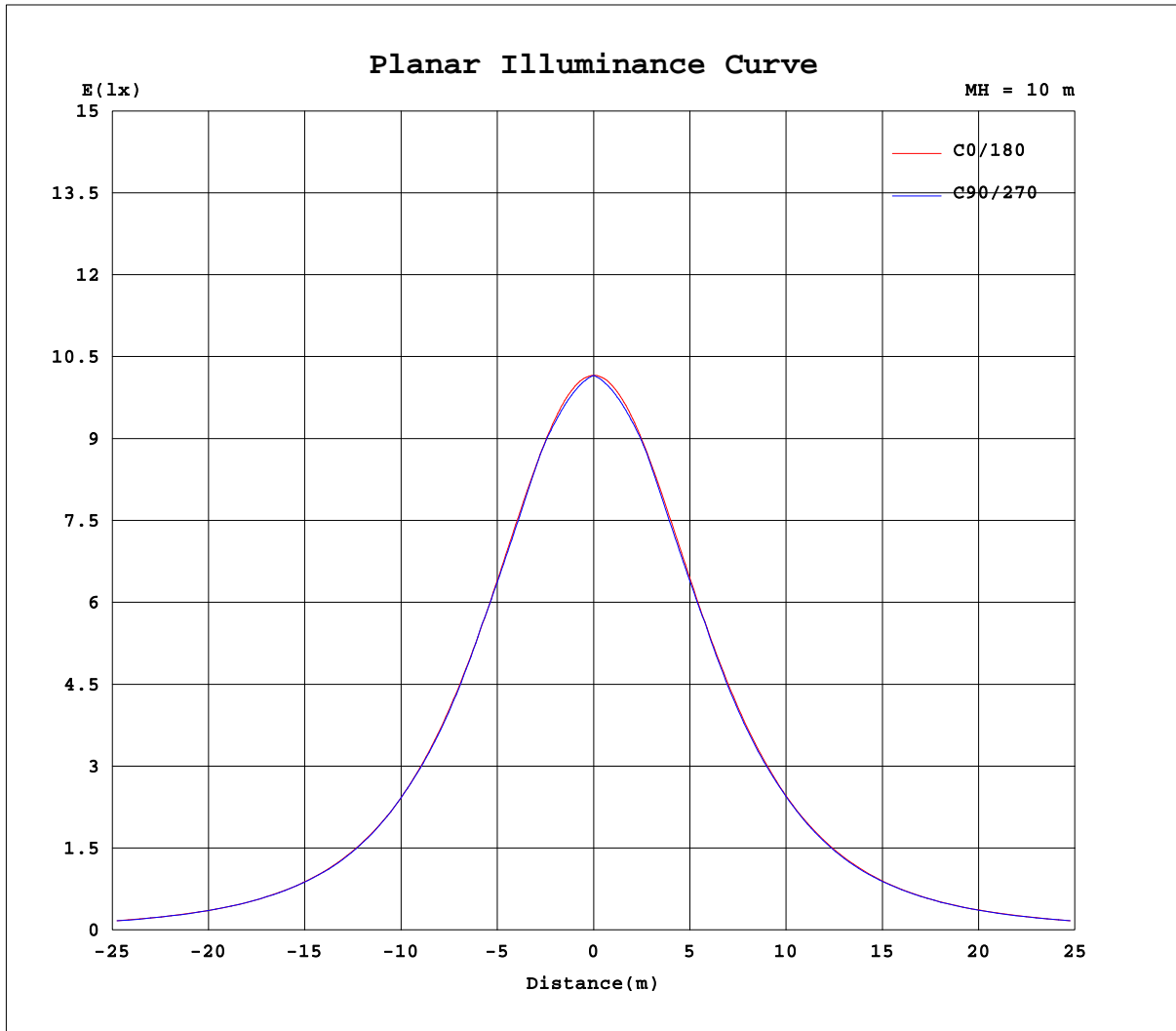
AvgL	cd/m2
L_0~180(65)av	3003
L_0~180(75)av	2749
L_0~180(85)av	1735
L_90~270(65)av	2987
L_90~270(75)av	2762
L_90~270(85)av	2245
L_45(65)av	2982
L_45(75)av	2756
L_45(85)av	2229

Standard: GB/T 29293-2012

C Range: 0 - 360DEG
C Interval: 5.0DEG
Test Speed: HIGH
Temperature:22DEG
Operators:NEIKO
Test Date:2017-07-26

γ Range: 0 - 180DEG
 γ Interval: 0.5DEG
Test System:EVERFINE GO-2000B_V1 SYSTEM V2.0.350
Humidity:55%
Test Distance:12.218m [K=1.0000]
Remarks:

Planar Illuminance Curve



C Range: 0 - 360DEG
 C Interval: 5.0DEG
 Test Speed: HIGH
 Temperature: 22DEG
 Operators: NEIKO
 Test Date: 2017-07-26

γ Range: 0 - 180DEG
 γ Interval: 0.5DEG
 Test System: EVERFINE GO-2000B_V1 SYSTEM V2.0.350
 Humidity: 55%
 Test Distance: 12.218m [K=1.0000]
 Remarks:

LUMINOUS DISTRIBUTION INTENSITY DATA

Test:U:120.0V I:0.2250A P:27W PF:0.9906 Lamp Flux:3213x1 lm		
NAME: ASD-ELP02-22D2750-STD	TYPE:LED PANEL	WEIGHT:
SPEC.:	DIM.: 603x603mm	SERIAL No.:BLD20170518P24
MFR.: ASD Lighting corp	SUR.:0.55*0.55	Shielding Angle:

Table--1

UNIT: cd

C(DEG) γ (DEG)	0	5	10	15	20	25	30	35	40	45	50	55	60	65	70	75	80	85	90
0	1016	1016	1016	1016	1016	1016	1016	1016	1016	1016	1016	1016	1016	1016	1016	1016	1016	1016	1016
5	1011	1010	1009	1008	1007	1006	1006	1005	1005	1004	1004	1004	1003	1003	1003	1003	1003	1003	1003
10	998	996	994	992	991	990	989	989	989	988	988	989	989	989	989	990	990	990	990
15	976	973	971	969	968	967	967	967	968	969	970	971	972	973	974	974	974	975	975
20	946	942	940	938	937	937	939	940	943	944	944	943	942	941	940	940	940	940	940
25	909	904	901	900	900	902	905	906	905	903	902	901	900	901	901	901	902	902	903
30	863	858	856	855	857	861	861	858	856	855	855	856	858	859	861	862	864	864	865
35	811	805	803	804	808	808	805	803	803	805	808	810	809	807	806	806	806	806	806
40	752	746	745	748	750	746	744	746	749	750	747	746	745	745	745	745	746	746	747
45	687	681	681	685	682	680	681	686	682	680	680	680	681	682	684	685	685	686	686
50	616	610	612	613	610	611	614	610	609	610	612	613	614	613	612	612	612	612	612
55	541	535	540	536	536	538	535	534	536	538	537	535	535	535	535	535	536	536	536
60	461	457	459	456	459	456	456	458	457	455	455	455	456	457	458	459	460	460	461
65	379	376	375	377	375	375	376	374	374	374	375	376	376	376	376	376	377	377	377
70	295	294	292	292	293	292	291	292	293	292	292	292	292	292	293	293	293	294	294
75	212	211	210	211	209	209	210	210	209	209	210	210	210	210	210	211	211	211	212
80	131	125	122	126	129	130	130	129	129	129	128	128	129	130	130	130	131	131	132
85	47.2	37.2	42.8	50.4	53.5	54.3	54.9	55.2	55.1	54.8	54.5	54.1	54.0	54.0	54.1	54.5	55.0	55.4	
90	0.72	1.45	1.45	1.37	1.36	1.51	1.86	2.23	2.44	2.57	2.77	2.98	3.24	3.58	3.94	4.35	4.84	5.29	5.51
95	0.00	0.00	0.00	0.00	0.00	0.00	0.00	0.00	0.00	0.00	0.00	0.00	0.00	0.00	0.00	0.00	0.00	0.00	0.00
100	0.00	0.00	0.00	0.00	0.00	0.00	0.00	0.00	0.00	0.00	0.00	0.00	0.00	0.00	0.00	0.00	0.00	0.00	0.00
105	0.00	0.00	0.00	0.00	0.00	0.00	0.00	0.00	0.00	0.00	0.00	0.00	0.00	0.00	0.00	0.00	0.00	0.00	0.00
110	0.00	0.00	0.00	0.00	0.00	0.00	0.00	0.00	0.00	0.00	0.00	0.00	0.00	0.00	0.00	0.00	0.00	0.00	0.00
115	0.00	0.00	0.00	0.00	0.00	0.00	0.00	0.00	0.00	0.00	0.00	0.00	0.00	0.00	0.00	0.00	0.00	0.00	0.00
120	0.00	0.00	0.00	0.00	0.00	0.00	0.00	0.00	0.00	0.00	0.00	0.00	0.00	0.00	0.00	0.00	0.00	0.00	0.00
125	0.00	0.00	0.00	0.00	0.00	0.00	0.00	0.00	0.00	0.00	0.00	0.00	0.00	0.00	0.00	0.00	0.00	0.00	0.00
130	0.00	0.00	0.00	0.00	0.00	0.00	0.00	0.00	0.00	0.00	0.00	0.00	0.00	0.00	0.00	0.00	0.00	0.00	0.00
135	0.00	0.00	0.00	0.00	0.00	0.00	0.00	0.00	0.00	0.00	0.00	0.00	0.00	0.00	0.00	0.00	0.00	0.00	0.00
140	0.00	0.00	0.00	0.00	0.00	0.00	0.00	0.00	0.00	0.00	0.00	0.00	0.00	0.00	0.00	0.00	0.00	0.00	0.00
145	0.00	0.00	0.00	0.00	0.00	0.00	0.00	0.00	0.00	0.00	0.00	0.00	0.00	0.00	0.00	0.00	0.00	0.00	0.00
150	0.00	0.00	0.00	0.00	0.00	0.00	0.00	0.00	0.00	0.00	0.00	0.00	0.00	0.00	0.00	0.00	0.00	0.00	0.00
155	0.00	0.00	0.00	0.00	0.00	0.00	0.00	0.00	0.00	0.00	0.00	0.00	0.00	0.00	0.00	0.00	0.00	0.00	0.00
160	0.00	0.00	0.00	0.00	0.00	0.00	0.00	0.00	0.00	0.00	0.00	0.00	0.00	0.00	0.00	0.00	0.00	0.00	0.00
165	0.00	0.00	0.00	0.00	0.00	0.00	0.00	0.00	0.00	0.00	0.00	0.00	0.00	0.00	0.00	0.00	0.00	0.00	0.00
170	0.00	0.00	0.00	0.00	0.00	0.00	0.00	0.00	0.00	0.00	0.00	0.00	0.00	0.00	0.00	0.00	0.00	0.00	0.00
175	0.00	0.00	0.00	0.00	0.00	0.00	0.00	0.00	0.00	0.00	0.00	0.00	0.00	0.00	0.00	0.00	0.00	0.00	0.00
180	0.00	0.00	0.00	0.00	0.00	0.00	0.00	0.00	0.00	0.00	0.00	0.00	0.00	0.00	0.00	0.00	0.00	0.00	0.00

C Range: 0 - 360DEG
 C Interval: 5.0DEG
 Test Speed: HIGH
 Temperature:22DEG
 Operators:NEIKO
 Test Date:2017-07-26

γ Range: 0 - 180DEG
 γ Interval: 0.5DEG
 Test System:EVERFINE GO-2000B_V1 SYSTEM V2.0.350
 Humidity:55%
 Test Distance:12.218m [K=1.0000]
 Remarks:

LUMINOUS DISTRIBUTION INTENSITY DATA

Test:U:120.0V I:0.2250A P:27W PF:0.9906 Lamp Flux:3213x1 lm		
NAME: ASD-ELP02-22D2750-STD	TYPE:LED PANEL	WEIGHT:
SPEC.:	DIM.: 603x603mm	SERIAL No.:BLD20170518P24
MFR.: ASD Lighting corp	SUR.:0.55*0.55	Shielding Angle:

Table--2

UNIT: cd

C(DEG) γ (DEG)	95	100	105	110	115	120	125	130	135	140	145	150	155	160	165	170	175	180	185
0	1016	1016	1016	1016	1016	1016	1016	1016	1016	1016	1016	1016	1016	1016	1016	1016	1016	1016	1016
5	1003	1003	1003	1004	1004	1004	1004	1005	1005	1006	1006	1007	1008	1009	1009	1010	1011	1013	1012
10	990	990	990	990	990	990	990	990	990	990	991	992	992	993	995	997	998	1001	999
15	975	975	975	975	975	974	973	972	971	970	970	970	970	971	973	974	977	980	977
20	940	940	941	942	943	944	946	947	947	946	944	943	942	942	943	945	948	952	948
25	903	903	903	903	903	903	904	905	907	910	911	909	907	906	906	907	910	915	910
30	865	865	864	863	862	861	860	860	860	861	863	867	866	863	862	862	865	870	865
35	806	807	808	809	811	813	815	813	811	809	809	811	815	815	811	811	813	819	814
40	747	747	748	748	748	749	751	753	757	755	753	752	753	757	755	753	755	761	755
45	686	687	687	687	686	685	685	685	687	690	694	689	688	690	693	689	690	696	690
50	612	613	614	615	616	618	619	617	616	617	618	623	620	619	622	621	620	626	620
55	537	537	538	538	539	540	541	543	545	544	542	544	548	545	544	548	545	551	545
60	461	461	461	461	461	461	461	462	463	465	466	465	465	469	465	468	465	471	466
65	378	379	379	380	381	382	383	382	382	381	382	384	383	383	386	383	384	388	384
70	295	295	296	297	297	298	298	299	300	300	299	299	299	300	300	300	301	303	301
75	212	213	213	214	215	215	215	216	216	216	216	217	216	216	216	216	216	218	216
80	132	132	133	133	134	133	133	133	134	134	135	135	135	135	130	123	123	137	136
85	55.2	55.3	55.4	55.8	56.5	56.8	57.2	57.6	58.0	58.6	59.2	59.5	59.2	58.0	53.6	45.4	37.1	44.1	53.4
90	5.23	4.95	4.60	4.34	4.32	4.22	3.99	3.72	3.26	3.08	2.99	2.65	2.06	1.38	1.34	1.34	1.33	1.20	0.80
95	0.00	0.00	0.00	0.00	0.00	0.00	0.00	0.00	0.00	0.00	0.00	0.00	0.00	0.00	0.00	0.00	0.00	0.00	0.00
100	0.00	0.00	0.00	0.00	0.00	0.00	0.00	0.00	0.00	0.00	0.00	0.00	0.00	0.00	0.00	0.00	0.00	0.00	0.00
105	0.00	0.00	0.00	0.00	0.00	0.00	0.00	0.00	0.00	0.00	0.00	0.00	0.00	0.00	0.00	0.00	0.00	0.00	0.00
110	0.00	0.00	0.00	0.00	0.00	0.00	0.00	0.00	0.00	0.00	0.00	0.00	0.00	0.00	0.00	0.00	0.00	0.00	0.00
115	0.00	0.00	0.00	0.00	0.00	0.00	0.00	0.00	0.00	0.00	0.00	0.00	0.00	0.00	0.00	0.00	0.00	0.00	0.00
120	0.00	0.00	0.00	0.00	0.00	0.00	0.00	0.00	0.00	0.00	0.00	0.00	0.00	0.00	0.00	0.00	0.00	0.00	0.00
125	0.00	0.00	0.00	0.00	0.00	0.00	0.00	0.00	0.00	0.00	0.00	0.00	0.00	0.00	0.00	0.00	0.00	0.00	0.00
130	0.00	0.00	0.00	0.00	0.00	0.00	0.00	0.00	0.00	0.00	0.00	0.00	0.00	0.00	0.00	0.00	0.00	0.00	0.00
135	0.00	0.00	0.00	0.00	0.00	0.00	0.00	0.00	0.00	0.00	0.00	0.00	0.00	0.00	0.00	0.00	0.00	0.00	0.00
140	0.00	0.00	0.00	0.00	0.00	0.00	0.00	0.00	0.00	0.00	0.00	0.00	0.00	0.00	0.00	0.00	0.00	0.00	0.00
145	0.00	0.00	0.00	0.00	0.00	0.00	0.00	0.00	0.00	0.00	0.00	0.00	0.00	0.00	0.00	0.00	0.00	0.00	0.00
150	0.00	0.00	0.00	0.00	0.00	0.00	0.00	0.00	0.00	0.00	0.00	0.00	0.00	0.00	0.00	0.00	0.00	0.00	0.00
155	0.00	0.00	0.00	0.00	0.00	0.00	0.00	0.00	0.00	0.00	0.00	0.00	0.00	0.00	0.00	0.00	0.00	0.00	0.00
160	0.00	0.00	0.00	0.00	0.00	0.00	0.00	0.00	0.00	0.00	0.00	0.00	0.00	0.00	0.00	0.00	0.00	0.00	0.00
165	0.00	0.00	0.00	0.00	0.00	0.00	0.00	0.00	0.00	0.00	0.00	0.00	0.00	0.00	0.00	0.00	0.00	0.00	0.00
170	0.00	0.00	0.00	0.00	0.00	0.00	0.00	0.00	0.00	0.00	0.00	0.00	0.00	0.00	0.00	0.00	0.00	0.00	0.00
175	0.00	0.00	0.00	0.00	0.00	0.00	0.00	0.00	0.00	0.00	0.00	0.00	0.00	0.00	0.00	0.00	0.00	0.00	0.00
180	0.00	0.00	0.00	0.00	0.00	0.00	0.00	0.00	0.00	0.00	0.00	0.00	0.00	0.00	0.00	0.00	0.00	0.00	0.00

C Range: 0 - 360DEG
 C Interval: 5.0DEG
 Test Speed: HIGH
 Temperature:22DEG
 Operators:NEIKO
 Test Date:2017-07-26

γ Range: 0 - 180DEG
 γ Interval: 0.5DEG
 Test System:EVERFINE GO-2000B_V1 SYSTEM V2.0.350
 Humidity:55%
 Test Distance:12.218m [K=1.0000]
 Remarks:

LUMINOUS DISTRIBUTION INTENSITY DATA

Test:U:120.0V I:0.2250A P:27W PF:0.9906 Lamp Flux:3213x1 lm		
NAME: ASD-ELP02-22D2750-STD	TYPE:LED PANEL	WEIGHT:
SPEC.:	DIM.: 603x603mm	SERIAL No.:BLD20170518P24
MFR.: ASD Lighting corp	SUR.:0.55*0.55	Shielding Angle:

Table--3

UNIT: cd

C(DEG) γ (DEG)	190	195	200	205	210	215	220	225	230	235	240	245	250	255	260	265	270	275	280
0	1016	1016	1016	1016	1016	1016	1016	1016	1016	1016	1016	1016	1016	1016	1016	1016	1016	1016	1016
5	1011	1010	1009	1008	1007	1007	1006	1006	1005	1005	1005	1004	1004	1004	1004	1004	1004	1004	1004
10	997	995	994	993	992	992	991	991	991	991	991	991	991	991	992	992	991	991	991
15	975	973	972	971	971	971	972	972	973	974	976	977	977	977	977	977	977	976	976
20	945	943	943	943	944	945	947	949	949	948	946	945	944	943	943	943	942	942	942
25	907	906	907	908	911	912	911	909	907	906	906	906	906	906	906	906	905	905	905
30	863	862	864	868	868	865	863	862	862	863	864	865	867	868	868	869	869	868	867
35	811	812	816	816	813	811	812	813	816	819	816	815	813	812	811	811	810	810	810
40	754	756	759	755	754	755	758	760	757	755	754	753	753	753	753	753	752	752	751
45	690	694	691	690	692	696	693	691	690	690	690	691	692	693	693	693	692	692	692
50	621	623	620	622	625	621	620	621	622	624	624	622	621	620	620	619	619	619	618
55	549	546	547	550	546	546	547	549	548	546	545	545	544	544	544	544	544	543	543
60	468	466	470	467	468	470	468	467	467	467	467	467	468	468	468	468	468	468	467
65	384	387	384	386	387	385	385	386	387	388	387	387	386	386	386	385	385	385	385
70	300	300	302	301	301	302	304	304	304	304	304	303	303	303	303	302	302	302	302
75	217	217	217	218	219	219	219	220	220	220	221	221	221	221	220	220	220	220	220
80	136	136	137	137	137	138	138	138	138	138	139	140	140	140	140	140	140	140	140
85	53.3	55.8	59.6	60.9	61.7	61.9	62.0	62.1	62.0	61.9	62.0	62.1	62.1	62.1	62.4	62.7	62.8	62.5	62.0
90	0.81	0.81	0.87	2.09	3.08	3.71	4.32	4.98	5.49	5.91	6.22	6.60	7.01	7.46	8.03	8.48	8.59	8.39	7.88
95	0.00	0.00	0.00	0.00	0.00	0.00	0.00	0.00	0.00	0.00	0.00	0.00	0.00	0.00	0.00	0.00	0.00	0.00	0.00
100	0.00	0.00	0.00	0.00	0.00	0.00	0.00	0.00	0.00	0.00	0.00	0.00	0.00	0.00	0.00	0.00	0.00	0.00	0.00
105	0.00	0.00	0.00	0.00	0.00	0.00	0.00	0.00	0.00	0.00	0.00	0.00	0.00	0.00	0.00	0.00	0.00	0.00	0.00
110	0.00	0.00	0.00	0.00	0.00	0.00	0.00	0.00	0.00	0.00	0.00	0.00	0.00	0.00	0.00	0.00	0.00	0.00	0.00
115	0.00	0.00	0.00	0.00	0.00	0.00	0.00	0.00	0.00	0.00	0.00	0.00	0.00	0.00	0.00	0.00	0.00	0.00	0.00
120	0.00	0.00	0.00	0.00	0.00	0.00	0.00	0.00	0.00	0.00	0.00	0.00	0.00	0.00	0.00	0.00	0.00	0.00	0.00
125	0.00	0.00	0.00	0.00	0.00	0.00	0.00	0.00	0.00	0.00	0.00	0.00	0.00	0.00	0.00	0.00	0.00	0.00	0.00
130	0.00	0.00	0.00	0.00	0.00	0.00	0.00	0.00	0.00	0.00	0.00	0.00	0.00	0.00	0.00	0.00	0.00	0.00	0.00
135	0.00	0.00	0.00	0.00	0.00	0.00	0.00	0.00	0.00	0.00	0.00	0.00	0.00	0.00	0.00	0.00	0.00	0.00	0.00
140	0.00	0.00	0.00	0.00	0.00	0.00	0.00	0.00	0.00	0.00	0.00	0.00	0.00	0.00	0.00	0.00	0.00	0.00	0.00
145	0.00	0.00	0.00	0.00	0.00	0.00	0.00	0.00	0.00	0.00	0.00	0.00	0.00	0.00	0.00	0.00	0.00	0.00	0.00
150	0.00	0.00	0.00	0.00	0.00	0.00	0.00	0.00	0.00	0.00	0.00	0.00	0.00	0.00	0.00	0.00	0.00	0.00	0.00
155	0.00	0.00	0.00	0.00	0.00	0.00	0.00	0.00	0.00	0.00	0.00	0.00	0.00	0.00	0.00	0.00	0.00	0.00	0.00
160	0.00	0.00	0.00	0.00	0.00	0.00	0.00	0.00	0.00	0.00	0.00	0.00	0.00	0.00	0.00	0.00	0.00	0.00	0.00
165	0.00	0.00	0.00	0.00	0.00	0.00	0.00	0.00	0.00	0.00	0.00	0.00	0.00	0.00	0.00	0.00	0.00	0.00	0.00
170	0.00	0.00	0.00	0.00	0.00	0.00	0.00	0.00	0.00	0.00	0.00	0.00	0.00	0.00	0.00	0.00	0.00	0.00	0.00
175	0.00	0.00	0.00	0.00	0.00	0.00	0.00	0.00	0.00	0.00	0.00	0.00	0.00	0.00	0.00	0.00	0.00	0.00	0.00
180	0.00	0.00	0.00	0.00	0.00	0.00	0.00	0.00	0.00	0.00	0.00	0.00	0.00	0.00	0.00	0.00	0.00	0.00	0.00

C Range: 0 - 360DEG
 C Interval: 5.0DEG
 Test Speed: HIGH
 Temperature:22DEG
 Operators:NEIKO
 Test Date:2017-07-26

γ Range: 0 - 180DEG
 γ Interval: 0.5DEG
 Test System:EVERFINE GO-2000B_V1 SYSTEM V2.0.350
 Humidity:55%
 Test Distance:12.218m [K=1.0000]
 Remarks:

LUMINOUS DISTRIBUTION INTENSITY DATA

Test:U:120.0V I:0.2250A P:27W PF:0.9906 Lamp Flux:3213x1 lm		
NAME: ASD-ELP02-22D2750-STD	TYPE:LED PANEL	WEIGHT:
SPEC.:	DIM.: 603x603mm	SERIAL No.:BLD20170518P24
MFR.: ASD Lighting corp	SUR.:0.55*0.55	Shielding Angle:

Table--4

UNIT: cd

C(DEC) γ (DEC)	285	290	295	300	305	310	315	320	325	330	335	340	345	350	355				
0	1016	1016	1016	1016	1016	1016	1016	1016	1016	1016	1016	1016	1016	1016	1016				
5	1004	1004	1004	1004	1004	1004	1005	1005	1006	1006	1007	1007	1008	1009	1010				
10	991	991	990	990	990	989	989	989	990	990	991	992	993	994	996				
15	976	976	975	974	973	971	970	969	968	968	968	968	969	971	973				
20	942	943	943	944	945	946	946	944	942	940	939	938	939	940	943				
25	904	904	903	903	903	904	905	907	908	906	903	901	901	902	904				
30	866	864	863	861	859	858	858	858	860	863	862	858	856	856	859				
35	810	811	811	813	814	811	808	806	806	807	810	810	806	804	806				
40	751	750	750	750	750	752	754	752	749	747	748	752	749	746	747				
45	691	690	688	686	685	684	685	686	689	684	682	684	687	682	682				
50	618	619	619	620	620	617	615	614	614	617	614	612	615	613	611				
55	542	542	542	541	542	543	544	541	539	539	541	538	538	541	536				
60	466	465	464	463	462	462	462	463	464	461	459	462	458	461	458				
65	384	384	384	384	383	382	381	380	380	381	379	378	380	377	377				
70	302	301	301	300	300	300	299	299	297	296	296	297	295	294	295				
75	220	219	219	219	218	217	217	216	215	215	214	213	214	212	212				
80	139	139	139	138	137	137	136	136	135	135	134	134	133	133	131				
85	61.4	61.1	60.9	60.6	60.2	60.1	59.8	59.6	59.4	58.9	58.3	57.0	53.6	50.9	51.4				
90	7.24	6.65	6.10	5.53	4.91	4.28	3.62	2.95	2.48	1.68	0.81	0.81	0.81	0.81	0.81				
95	0.00	0.00	0.00	0.00	0.00	0.00	0.00	0.00	0.00	0.00	0.00	0.00	0.00	0.00	0.00				
100	0.00	0.00	0.00	0.00	0.00	0.00	0.00	0.00	0.00	0.00	0.00	0.00	0.00	0.00	0.00				
105	0.00	0.00	0.00	0.00	0.00	0.00	0.00	0.00	0.00	0.00	0.00	0.00	0.00	0.00	0.00				
110	0.00	0.00	0.00	0.00	0.00	0.00	0.00	0.00	0.00	0.00	0.00	0.00	0.00	0.00	0.00				
115	0.00	0.00	0.00	0.00	0.00	0.00	0.00	0.00	0.00	0.00	0.00	0.00	0.00	0.00	0.00				
120	0.00	0.00	0.00	0.00	0.00	0.00	0.00	0.00	0.00	0.00	0.00	0.00	0.00	0.00	0.00				
125	0.00	0.00	0.00	0.00	0.00	0.00	0.00	0.00	0.00	0.00	0.00	0.00	0.00	0.00	0.00				
130	0.00	0.00	0.00	0.00	0.00	0.00	0.00	0.00	0.00	0.00	0.00	0.00	0.00	0.00	0.00				
135	0.00	0.00	0.00	0.00	0.00	0.00	0.00	0.00	0.00	0.00	0.00	0.00	0.00	0.00	0.00				
140	0.00	0.00	0.00	0.00	0.00	0.00	0.00	0.00	0.00	0.00	0.00	0.00	0.00	0.00	0.00				
145	0.00	0.00	0.00	0.00	0.00	0.00	0.00	0.00	0.00	0.00	0.00	0.00	0.00	0.00	0.00				
150	0.00	0.00	0.00	0.00	0.00	0.00	0.00	0.00	0.00	0.00	0.00	0.00	0.00	0.00	0.00				
155	0.00	0.00	0.00	0.00	0.00	0.00	0.00	0.00	0.00	0.00	0.00	0.00	0.00	0.00	0.00				
160	0.00	0.00	0.00	0.00	0.00	0.00	0.00	0.00	0.00	0.00	0.00	0.00	0.00	0.00	0.00				
165	0.00	0.00	0.00	0.00	0.00	0.00	0.00	0.00	0.00	0.00	0.00	0.00	0.00	0.00	0.00				
170	0.00	0.00	0.00	0.00	0.00	0.00	0.00	0.00	0.00	0.00	0.00	0.00	0.00	0.00	0.00				
175	0.00	0.00	0.00	0.00	0.00	0.00	0.00	0.00	0.00	0.00	0.00	0.00	0.00	0.00	0.00				
180	0.00	0.00	0.00	0.00	0.00	0.00	0.00	0.00	0.00	0.00	0.00	0.00	0.00	0.00	0.00				

C Range: 0 - 360DEG
 C Interval: 5.0DEG
 Test Speed: HIGH
 Temperature:22DEG
 Operators:NEIKO
 Test Date:2017-07-26

γ Range: 0 - 180DEG
 γ Interval: 0.5DEG
 Test System:EVERFINE GO-2000B_V1 SYSTEM V2.0.350
 Humidity:55%
 Test Distance:12.218m [K=1.0000]
 Remarks: