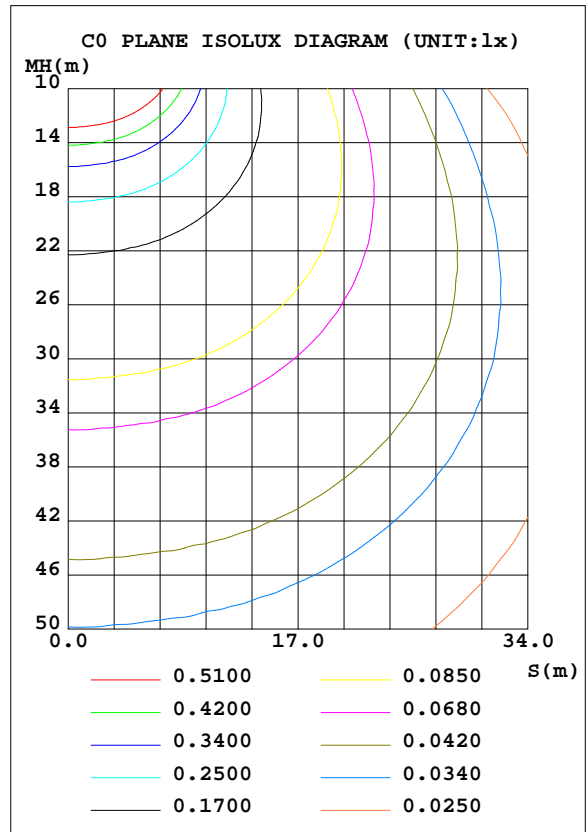
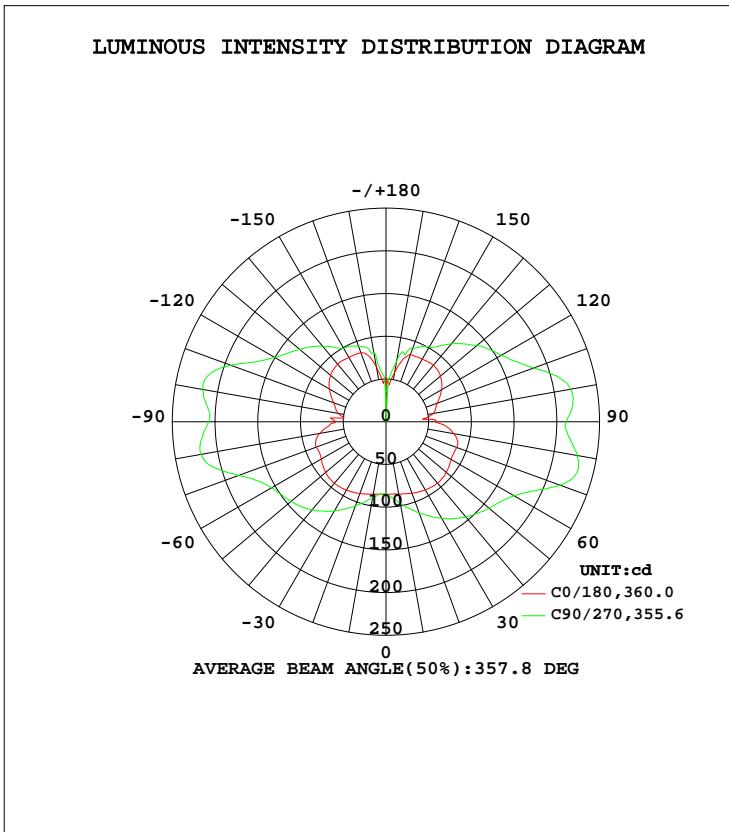


LUMINAIRE PHOTOMETRIC TEST REPORT

Test:U:120.0V I:0.1472A P:17.29W PF:0.9787 Lamp Flux:1541.24x1 lm		
NAME: ASD-LWS27-18D18CC 4000K	TYPE:N/A	WEIGHT:N/A
SPEC.:N/A	DIM.: N/A	SERIAL No.:N/A
MFR.: ASD Lighting corp	SUR.:N/A	Shielding Angle:N/A

DATA OF LAMP		PHOTOMETRIC DATA Eff: 89.14 lm/W			
MODEL	PSZ2S220624001-10	I <sub>max</sub> (cd)	231.8	S/MH(C0/180)	1.67
NOMINAL POWER(W)		LOR(%)	100.0	S/MH(C90/270)	2.37
RATED VOLTAGE(V)	120	TOTAL FLUX(lm)	1541.2	η UP, DN(C0-180)	23.3,25.8
NOMINAL FLUX(lm)	1541.24	CIE CLASS	DIFFUSE	η UP, DN(C180-360)	23.6,27.3
LAMPS INSIDE	1	η up(%)	46.9	CIBSE SHR NOM	2.00
TEST VOLTAGE(V)	120	η down(%)	53.1	CIBSE SHR MAX	0.00



C Range: 0 - 360DEG  
 C Interval: 22.5DEG  
 Test Speed: HIGH  
 Temperature:25.8DEG  
 Operators:Carl  
 Test Date:2022-06-25

γ Range: 0 - 180DEG  
 γ Interval: 1.0DEG  
 Test System:EVERFINE GO-R5000\_V2 SYSTEM V2.0.351  
 Humidity:42%  
 Test Distance:2.526m [K=1.0000]  
 Remarks:

ZONAL FLUX DIAGRAM

ZONAL FLUX DIAGRAM:

γ	C0	C45	C90	C135	C180	C225	C270	C315	γ	Φ zone	Φ total	%lum, lamp
10	86.28	87.87	90.56	87.53	85.85	92.77	97.03	93.03	0- 10	8.361	8.361	0.54,0.54
20	89.35	98.47	104.8	98.20	89.33	105.2	113.5	105.8	10- 20	27.15	35.51	2.3,2.3
30	92.45	110.0	120.5	110.7	92.20	117.8	130.6	118.7	20- 30	49.38	84.89	5.51,5.51
40	94.06	120.7	134.7	121.0	93.61	127.9	145.6	129.3	30- 40	73.56	158.4	10.3,10.3
50	92.06	126.5	145.2	127.7	92.33	133.9	157.5	134.7	40- 50	96.58	255.0	16.5,16.5
60	87.44	127.9	154.3	129.7	88.14	135.8	173.2	136.9	50- 60	115.5	370.5	24,24
70	86.87	132.9	183.6	134.4	88.09	143.2	217.1	146.3	60- 70	134.6	505.1	32.8,32.8
80	78.79	141.5	220.2	145.3	80.47	146.1	227.2	148.1	70- 80	157.7	662.8	43,43
90	59.33	130.3	207.1	135.5	57.87	129.4	211.3	136.0	80- 90	155.3	818.1	53.1,53.1
100	56.66	136.6	217.6	141.3	55.87	134.1	219.8	138.6	90-100	151.2	969.3	62.9,62.9
110	65.26	121.5	193.4	125.6	63.89	122.9	184.4	126.2	100-110	143.2	1112	72.2,72.2
120	76.39	109.8	150.7	111.2	75.04	114.7	156.1	117.2	110-120	117.8	1230	79.8,79.8
130	84.70	103.1	131.9	104.0	83.26	107.2	138.5	108.7	120-130	98.92	1329	86.2,86.2
140	88.09	94.45	115.5	94.49	86.32	96.87	119.1	98.85	130-140	80.50	1410	91.5,91.5
150	87.04	94.75	99.26	94.63	84.62	90.47	101.2	96.97	140-150	60.48	1470	95.4,95.4
160	85.97	87.66	94.22	90.17	83.62	83.09	91.71	90.18	150-160	42.19	1512	98.1,98.1
170	65.24	74.61	83.06	68.72	58.96	61.74	71.91	76.59	160-170	23.26	1536	99.6,99.6
180	50.89	43.70	19.02	42.78	49.09	46.15	34.98	34.61	170-180	5.579	1541	100,100
DEG	LUMINOUS INTENSITY:cd									UNIT:lm		

Conical surface Flux(90deg): 204.07 lm

%lum = 13.2%  
%lamp = 13.2%

Conical surface Flux(120deg): 370.51 lm

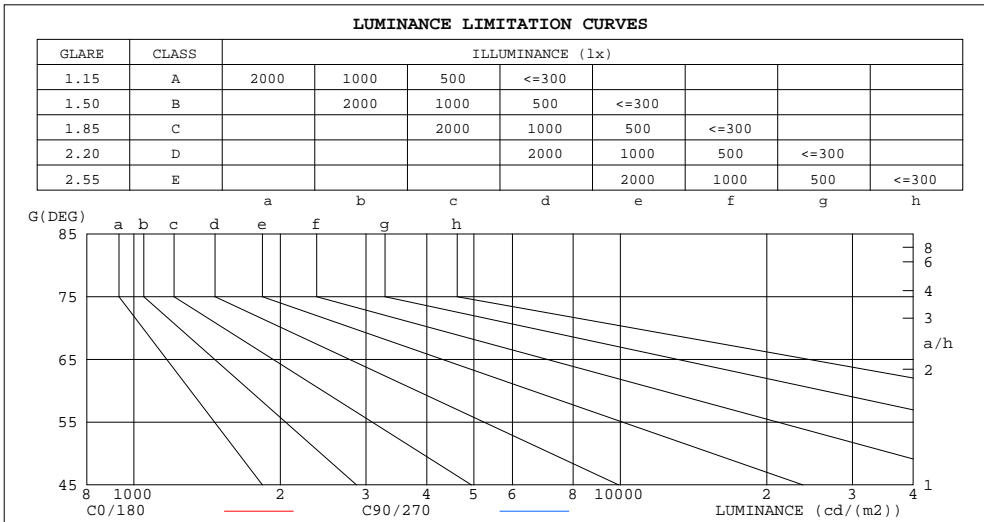
%lum = 24.0%  
%lamp = 24.0%

C Range: 0 - 360DEG  
C Interval: 22.5DEG  
Test Speed: HIGH  
Temperature:25.8DEG  
Operators:Carl  
Test Date:2022-06-25

γ Range: 0 - 180DEG  
γ Interval: 1.0DEG  
Test System:EVERFINE GO-R5000\_V2 SYSTEM V2.0.351  
Humidity:42%  
Test Distance:2.526m [K=1.0000]  
Remarks:

LUMINANCE LIMITATION CURVES

Test:U:120.0V I:0.1472A P:17.29W PF:0.9787 Lamp Flux:1541.24x1 lm		
NAME: ASD-LWS27-18D18CC 4000K	TYPE:N/A	WEIGHT:N/A
SPEC.:N/A	DIM.: N/A	SERIAL No.:N/A
MFR.: ASD Lighting corp	SUR.:N/A	Shielding Angle:N/A



LUMINANCE cd/(m2)		
G (DEG)	C0/180	C90/270
85	627376	1994377
80	361600	1019833
75	261356	645416
70	202423	431590
65	162010	312941
60	139370	248253
55	124969	208725
50	114132	181718
45	105545	159658

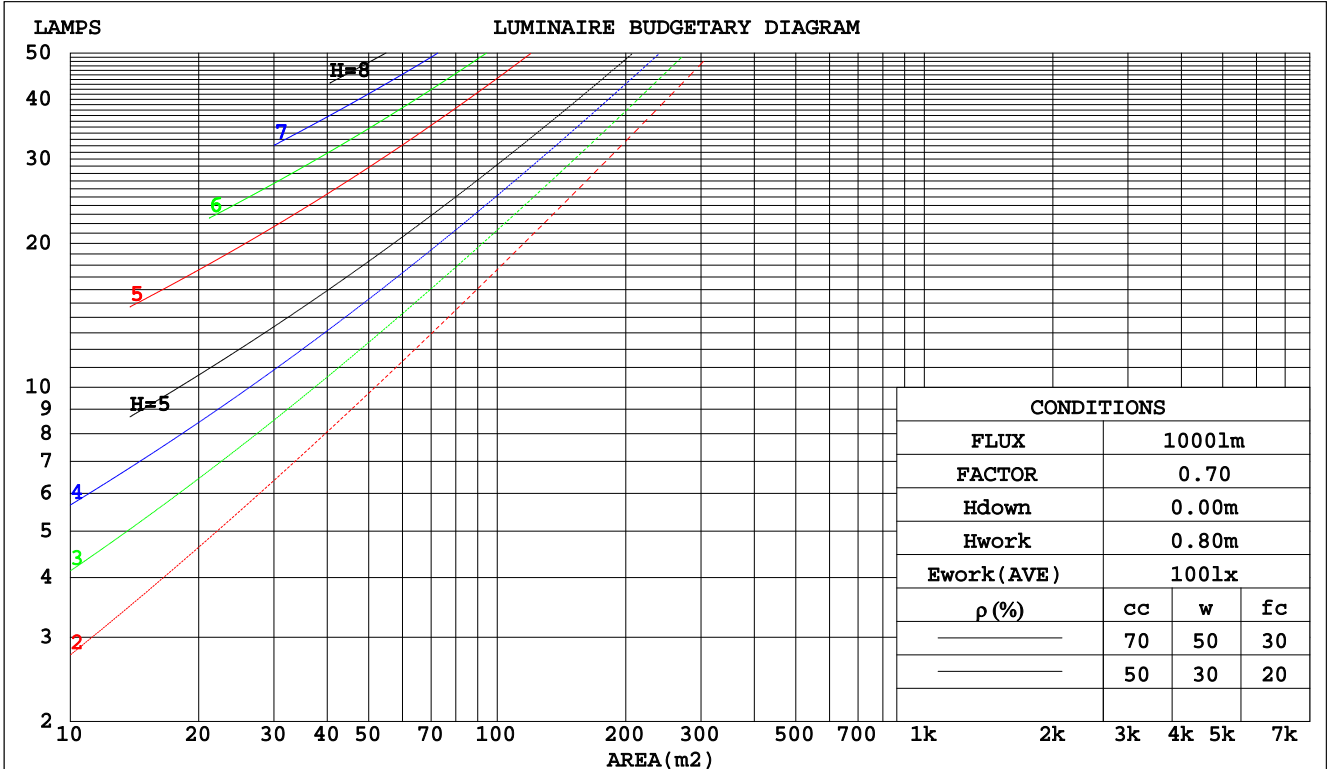
C Range: 0 - 360DEG  
 C Interval: 22.5DEG  
 Test Speed: HIGH  
 Temperature:25.8DEG  
 Operators:Carl  
 Test Date:2022-06-25

γ Range: 0 - 180DEG  
 γ Interval: 1.0DEG  
 Test System:EVERFINE GO-R5000\_V2 SYSTEM V2.0.351  
 Humidity:42%  
 Test Distance:2.526m [K=1.0000]  
 Remarks:

CU AND LUMINAIRE BUDGETARY ESTIMATE DIAGRAM

Test:U:120.0V I:0.1472A P:17.29W PF:0.9787 Lamp Flux:1541.24x1 lm		
NAME: ASD-LWS27-18D18CC 4000K	TYPE:N/A	WEIGHT:N/A
SPEC.:N/A	DIM.: N/A	SERIAL No.:N/A
MFR.: ASD Lighting corp	SUR.:N/A	Shielding Angle:N/A

pcc	80%			70%			50%			30%			10%			0
	50%	30%	10%	50%	30%	10%	50%	30%	10%	50%	30%	10%	50%	30%	10%	0
pw																0
pfc	20%			20%			20%			20%			20%			0
RCR	RCR:Room Cavity Ratio						Coefficients of Utilization(CU)									
0.0	1.08	1.08	1.08	.00	.00	.00	.85	.85	.85	.71	.71	.71	.59	.59	.59	.53
1.0	.87	.81	.76	.80	.75	.70	.67	.63	.59	.55	.52	.49	.44	.42	.40	.34
2.0	.73	.65	.58	.67	.60	.54	.56	.50	.45	.46	.41	.37	.36	.33	.30	.25
3.0	.63	.53	.46	.57	.49	.43	.48	.41	.36	.39	.34	.29	.30	.26	.23	.19
4.0	.55	.45	.38	.50	.41	.35	.42	.35	.29	.34	.28	.24	.26	.22	.19	.15
5.0	.48	.38	.31	.44	.35	.29	.37	.30	.24	.30	.24	.20	.23	.19	.16	.12
6.0	.43	.33	.27	.39	.31	.25	.33	.26	.21	.26	.21	.17	.21	.16	.13	.10
7.0	.38	.29	.23	.35	.27	.21	.29	.23	.18	.24	.19	.15	.19	.15	.11	.09
8.0	.34	.26	.20	.32	.24	.18	.26	.20	.15	.22	.16	.13	.17	.13	.10	.07
9.0	.31	.23	.17	.29	.21	.16	.24	.18	.14	.20	.15	.11	.16	.12	.09	.06
10.0	.28	.21	.15	.26	.19	.14	.22	.16	.12	.18	.13	.10	.14	.11	.08	.06



C Range: 0 - 360DEG  
 C Interval: 22.5DEG  
 Test Speed: HIGH  
 Temperature:25.8DEG  
 Operators:Carl  
 Test Date:2022-06-25

γ Range: 0 - 180DEG  
 γ Interval: 1.0DEG  
 Test System:EVERFINE GO-R5000\_V2 SYSTEM V2.0.351  
 Humidity:42%  
 Test Distance:2.526m [K=1.0000]  
 Remarks:

WEC AND CCEC

Test:U:120.0V I:0.1472A P:17.29W PF:0.9787 Lamp Flux:1541.24x1 lm		
NAME: ASD-LWS27-18D18CC 4000K	TYPE:N/A	WEIGHT:N/A
SPEC.:N/A	DIM.: N/A	SERIAL No.:N/A
MFR.: ASD Lighting corp	SUR.:N/A	Shielding Angle:N/A

ρcc	80%			70%			50%			30%			10%			0
ρw	50%	30%	10%	50%	30%	10%	50%	30%	10%	50%	30%	10%	50%	30%	10%	0
ρfc	20%			20%			20%			20%			20%			0
RCR	RCR:Room Cavity Ratio						Wall Exitance Coefficients(WEC)									
0.0																
1.0	.420	.239	.076	.399	.228	.072	.359	.206	.066	.321	.185	.060	.287	.167	.054	
2.0	.350	.192	.059	.330	.182	.056	.293	.163	.051	.259	.145	.045	.228	.129	.041	
3.0	.304	.162	.048	.286	.153	.046	.252	.137	.042	.221	.121	.037	.192	.106	.033	
4.0	.270	.140	.041	.254	.133	.039	.223	.118	.035	.194	.104	.031	.167	.091	.028	
5.0	.243	.124	.036	.228	.117	.034	.200	.104	.031	.173	.091	.027	.148	.079	.024	
6.0	.221	.111	.032	.207	.105	.030	.181	.093	.027	.157	.081	.024	.134	.070	.021	
7.0	.203	.100	.028	.190	.095	.027	.166	.084	.024	.143	.073	.021	.122	.063	.019	
8.0	.187	.092	.026	.176	.086	.024	.153	.077	.022	.132	.067	.019	.112	.058	.017	
9.0	.174	.084	.024	.163	.080	.022	.142	.070	.020	.122	.061	.018	.104	.053	.015	
10.0	.163	.078	.022	.152	.074	.021	.133	.065	.018	.114	.057	.016	.097	.049	.014	

ρcc	80%			70%			50%			30%			10%			0
ρw	50%	30%	10%	50%	30%	10%	50%	30%	10%	50%	30%	10%	50%	30%	10%	0
ρfc	20%			20%			20%			20%			20%			0
RCR	RCR:Room Cavity Ratio						Ceiling Cavity Exitance Coefficients(CCEC)									
0.0	.548	.548	.548	.468	.468	.468	.320	.320	.320	.184	.184	.184	.059	.059	.059	
1.0	.548	.516	.486	.469	.443	.418	.321	.304	.289	.185	.176	.168	.059	.057	.054	
2.0	.543	.494	.454	.465	.426	.392	.319	.294	.274	.184	.171	.160	.059	.055	.052	
3.0	.536	.479	.434	.459	.414	.377	.315	.287	.264	.182	.168	.156	.059	.054	.051	
4.0	.528	.468	.422	.453	.404	.366	.312	.282	.258	.180	.165	.153	.058	.054	.050	
5.0	.521	.459	.413	.447	.397	.359	.308	.277	.254	.179	.163	.151	.058	.053	.050	
6.0	.514	.451	.407	.441	.391	.354	.305	.274	.251	.177	.161	.149	.057	.053	.049	
7.0	.507	.445	.402	.436	.386	.351	.301	.271	.248	.175	.159	.148	.057	.052	.049	
8.0	.500	.440	.399	.431	.382	.348	.298	.268	.247	.173	.158	.147	.056	.052	.049	
9.0	.494	.436	.396	.426	.378	.346	.295	.266	.245	.172	.157	.146	.056	.052	.048	
10.0	.488	.432	.394	.421	.375	.344	.292	.264	.244	.170	.156	.146	.055	.051	.048	

C Range: 0 - 360DEG  
 C Interval: 22.5DEG  
 Test Speed: HIGH  
 Temperature:25.8DEG  
 Operators:Carl  
 Test Date:2022-06-25

γ Range: 0 - 180DEG  
 γ Interval: 1.0DEG  
 Test System:EVERFINE GO-R5000\_V2 SYSTEM V2.0.351  
 Humidity:42%  
 Test Distance:2.526m [K=1.0000]  
 Remarks:

UGR(Unified Glare Rating) Table

Test:U:120.0V I:0.1472A P:17.29W PF:0.9787 Lamp Flux:1541.24x1 lm										
NAME: ASD-LWS27-18D18CC 4000K					TYPE:N/A			WEIGHT:N/A		
SPEC.:N/A					DIM.: N/A			SERIAL No.:N/A		
MFR.: ASD Lighting corp					SUR.:N/A			Shielding Angle:N/A		
ceiling/cavity	0.7	0.7	0.5	0.5	0.3	0.7	0.7	0.5	0.5	0.3
walls	0.5	0.3	0.5	0.3	0.3	0.5	0.3	0.5	0.3	0.3
working plane	0.2	0.2	0.2	0.2	0.2	0.2	0.2	0.2	0.2	0.2
Room dimensions	Viewed crosswise					Viewed endwise				
x = 2H y = 2H	26.3	27.4	27.1	28.2	29.3	28.7	29.9	29.6	30.7	31.8
3H	29.1	30.1	29.9	31.0	32.1	32.6	33.7	33.5	34.5	35.7
4H	30.7	31.7	31.6	32.6	33.7	35.1	36.0	35.9	36.9	38.1
6H	32.4	33.3	33.3	34.2	35.4	37.7	38.6	38.6	39.5	40.7
8H	33.3	34.2	34.2	35.1	36.3	39.1	39.9	40.0	40.9	42.1
12H	34.2	35.1	35.1	36.0	37.2	40.5	41.4	41.4	42.3	43.5
4H 2H	27.8	28.8	28.7	29.7	30.9	29.5	30.4	30.3	31.3	32.5
3H	30.8	31.6	31.7	32.5	33.7	33.6	34.4	34.5	35.3	36.5
4H	32.5	33.2	33.4	34.2	35.4	36.2	36.9	37.1	37.9	39.1
6H	34.2	34.9	35.2	35.9	37.1	39.0	39.7	39.9	40.6	41.9
8H	35.1	35.8	36.1	36.8	38.0	40.4	41.1	41.4	42.0	43.3
12H	36.1	36.7	37.1	37.7	39.0	42.0	42.6	42.9	43.6	44.8
8H 4H	33.8	34.5	34.8	35.5	36.7	36.6	37.2	37.5	38.2	39.5
6H	35.8	36.4	36.8	37.4	38.7	39.7	40.2	40.6	41.2	42.5
8H	36.9	37.4	37.9	38.4	39.7	41.3	41.8	42.3	42.8	44.1
12H	38.0	38.4	39.0	39.4	40.7	43.2	43.6	44.2	44.6	45.9
12H 4H	34.4	35.0	35.4	36.0	37.2	36.6	37.2	37.6	38.2	39.5
6H	36.5	37.0	37.5	38.0	39.3	39.8	40.3	40.8	41.3	42.6
8H	37.7	38.1	38.7	39.1	40.4	41.6	42.0	42.6	43.0	44.3
Variations with the observer position at spacings:										
S = 1.0H	+ 0.1 / - 0.1					+ 0.1 / - 0.1				
1.5H	+ 0.2 / - 0.2					+ 0.2 / - 0.3				
2.0H	+ 0.3 / - 0.4					+ 0.3 / - 0.4				

CIE Pub.117 Corrected 1541 lm Total Lamp Luminous Flux.(8log(F/F0) = 1.5)

C Range: 0 - 360DEG  
 C Interval: 22.5DEG  
 Test Speed: HIGH  
 Temperature:25.8DEG  
 Operators:Carl  
 Test Date:2022-06-25

γ Range: 0 - 180DEG  
 γ Interval: 1.0DEG  
 Test System:EVERFINE GO-R5000\_V2 SYSTEM V2.0.351  
 Humidity:42%  
 Test Distance:2.526m [K=1.0000]  
 Remarks:

UTILIZATION FACTORS TABLE

Test:U:120.0V I:0.1472A P:17.29W PF:0.9787 Lamp Flux:1541.24x1 lm		
NAME: ASD-LWS27-18D18CC 4000K	TYPE:N/A	WEIGHT:N/A
SPEC.:N/A	DIM.: N/A	SERIAL No.:N/A
MFR.: ASD Lighting corp	SUR.:N/A	Shielding Angle:N/A

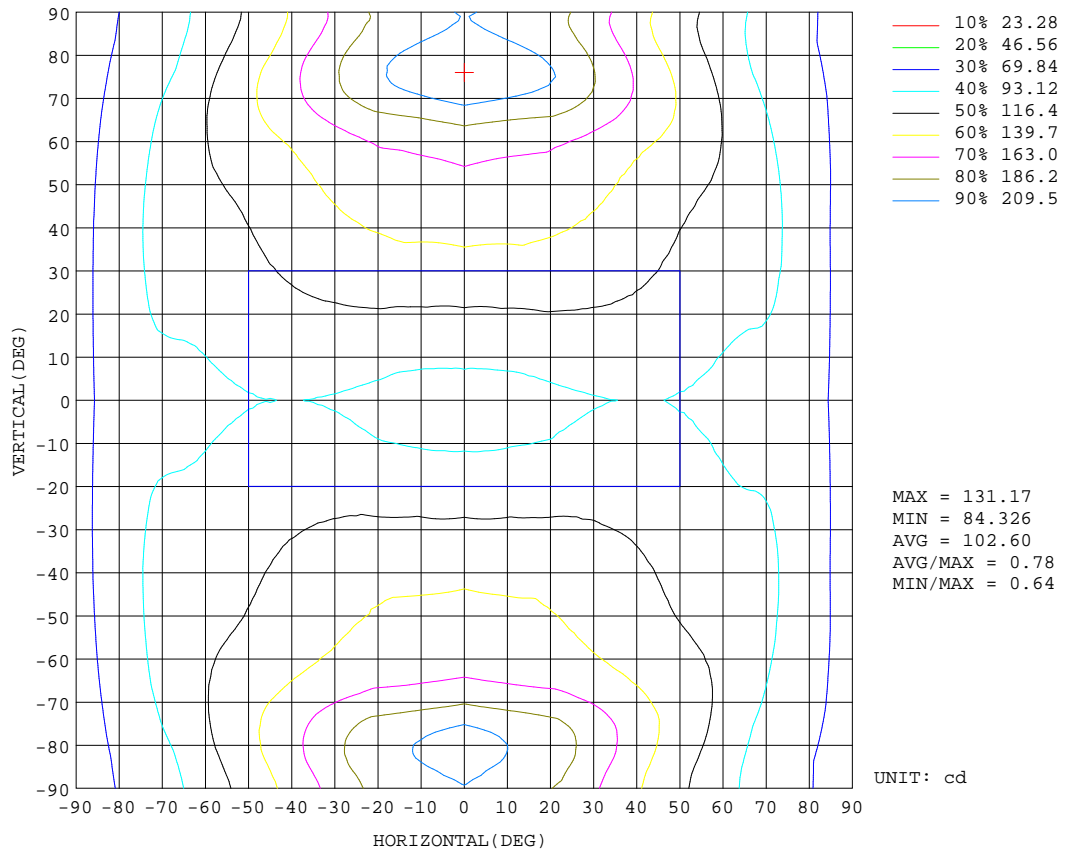
REFLECTANCE										
Ceiling	0.8	0.8	0.8	0.7	0.7	0.7	0.5	0.5	0.5	0
Walls	0.7	0.5	0.3	0.7	0.5	0.3	0.7	0.5	0.3	0
Working plane	0.2	0.2	0.2	0.2	0.2	0.2	0.2	0.2	0.2	0
ROOM INDEX	UTILIZATION FACTORS(PERCENT) $k(RI) \times RCR = 5$									
k = 0.60	36	24	16	34	23	16	31	21	15	7
0.80	45	31	22	42	29	21	37	27	20	10
1.00	52	38	28	49	36	27	43	34	25	13
1.25	59	44	35	55	42	33	48	37	30	16
1.50	64	50	40	60	47	38	51	41	34	19
2.00	72	59	49	67	55	46	57	48	41	23
2.50	77	65	55	71	60	52	61	52	45	26
3.00	81	70	61	75	65	57	64	56	50	29
4.00	86	77	69	80	71	64	68	61	56	32
5.00	90	81	74	83	75	69	70	65	60	35
ROOM INDEX	UF(total)									Direct
According to DIN EN 13032-2 2004			Suspended				SHRNOM = 1.25			

C Range: 0 - 360DEG  
 C Interval: 22.5DEG  
 Test Speed: HIGH  
 Temperature:25.8DEG  
 Operators:Carl  
 Test Date:2022-06-25

$\gamma$  Range: 0 - 180DEG  
 $\gamma$  Interval: 1.0DEG  
 Test System:EVERFINE GO-R5000\_V2 SYSTEM V2.0.351  
 Humidity:42%  
 Test Distance:2.526m [K=1.0000]  
 Remarks:

ISOCANDELA DIAGRAM

Test:U:120.0V I:0.1472A P:17.29W PF:0.9787 Lamp Flux:1541.24x1 lm		
NAME: ASD-LWS27-18D18CC 4000K	TYPE:N/A	WEIGHT:N/A
SPEC.:N/A	DIM.: N/A	SERIAL No.:N/A
MFR.: ASD Lighting corp	SUR.:N/A	Shielding Angle:N/A



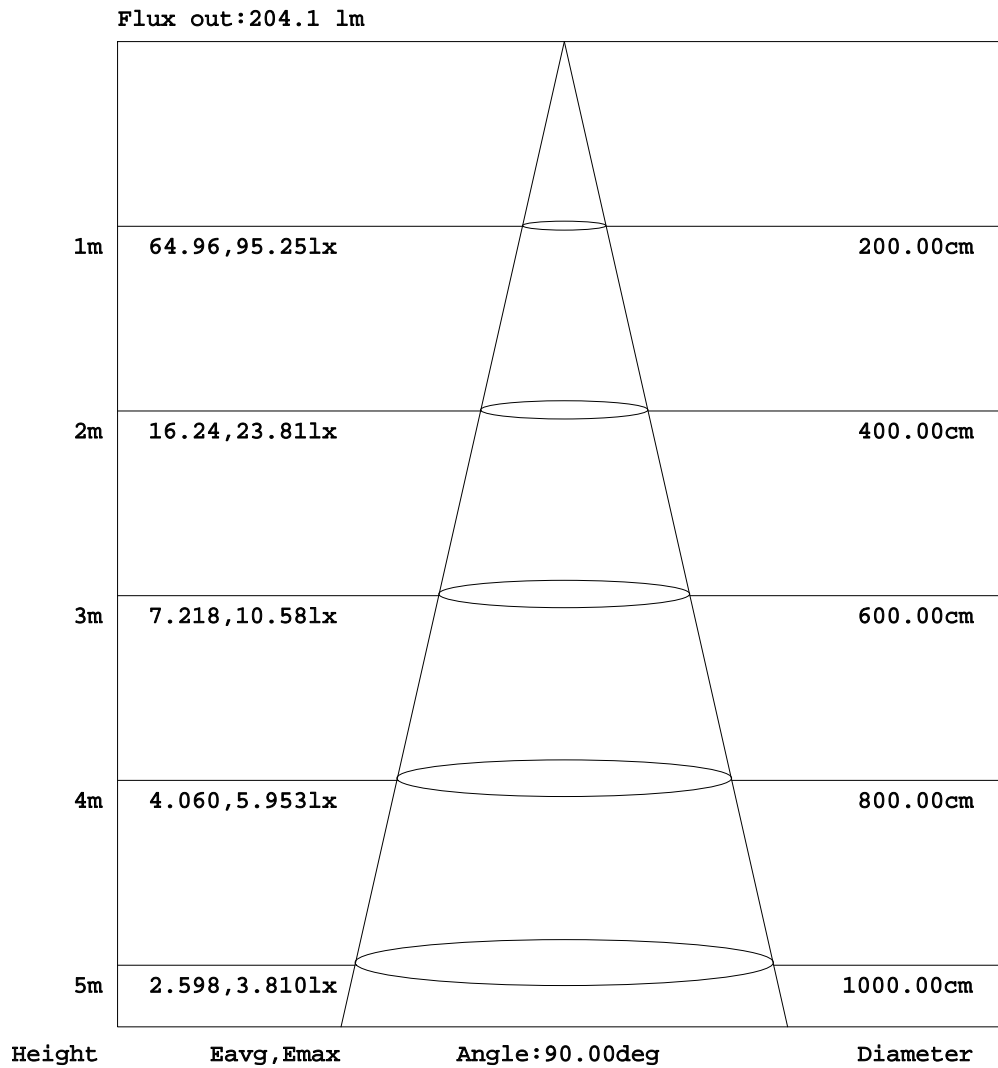
C Range: 0 - 360DEG  
 C Interval: 22.5DEG  
 Test Speed: HIGH  
 Temperature:25.8DEG  
 Operators:Carl  
 Test Date:2022-06-25

γ Range: 0 - 180DEG  
 γ Interval: 1.0DEG  
 Test System:EVERFINE GO-R5000\_V2 SYSTEM V2.0.351  
 Humidity:42%  
 Test Distance:2.526m [K=1.0000]  
 Remarks:



AAI Figure

Test:U:120.0V I:0.1472A P:17.29W PF:0.9787 Lamp Flux:1541.24x1 lm		
NAME: ASD-LWS27-18D18CC 4000K	TYPE:N/A	WEIGHT:N/A
SPEC.:N/A	DIM.: N/A	SERIAL No.:N/A
MFR.: ASD Lighting corp	SUR.:N/A	Shielding Angle:N/A



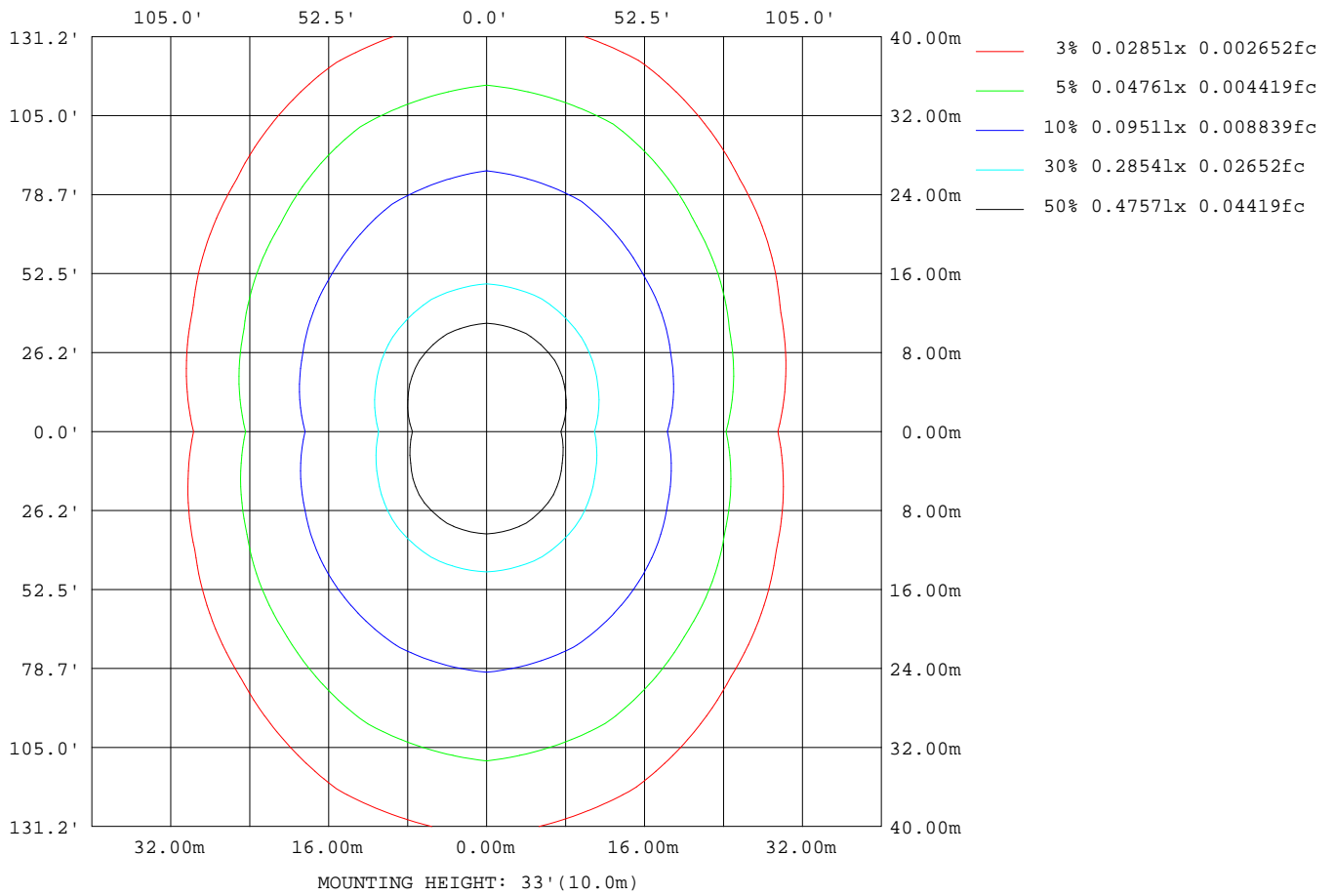
Note:The Curves indicate the illuminated area and the average illumination when the luminaire is at different distance.

C Range: 0 - 360DEG  
 C Interval: 22.5DEG  
 Test Speed: HIGH  
 Temperature:25.8DEG  
 Operators:Carl  
 Test Date:2022-06-25

γ Range: 0 - 180DEG  
 γ Interval: 1.0DEG  
 Test System:EVERFINE GO-R5000\_V2 SYSTEM V2.0.351  
 Humidity:42%  
 Test Distance:2.526m [K=1.0000]  
 Remarks:

**ISOLUX DIAGRAM**

Test:U:120.0V I:0.1472A P:17.29W PF:0.9787 Lamp Flux:1541.24x1 lm		
NAME: ASD-LWS27-18D18CC 4000K	TYPE:N/A	WEIGHT:N/A
SPEC.:N/A	DIM.: N/A	SERIAL No.:N/A
MFR.: ASD Lighting corp	SUR.:N/A	Shielding Angle:N/A



C Range: 0 - 360DEG  
 C Interval: 22.5DEG  
 Test Speed: HIGH  
 Temperature:25.8DEG  
 Operators:Carl  
 Test Date:2022-06-25

γ Range: 0 - 180DEG  
 γ Interval: 1.0DEG  
 Test System:EVERFINE GO-R5000\_V2 SYSTEM V2.0.351  
 Humidity:42%  
 Test Distance:2.526m [K=1.0000]  
 Remarks:

**LED Avg.L Report**

Test:U:120.0V I:0.1472A P:17.29W PF:0.9787 Lamp Flux:1541.24x1 lm		
NAME: ASD-LWS27-18D18CC 4000K	TYPE:N/A	WEIGHT:N/A
SPEC.:N/A	DIM.: N/A	SERIAL No.:N/A
MFR.: ASD Lighting corp	SUR.:N/A	Shielding Angle:N/A

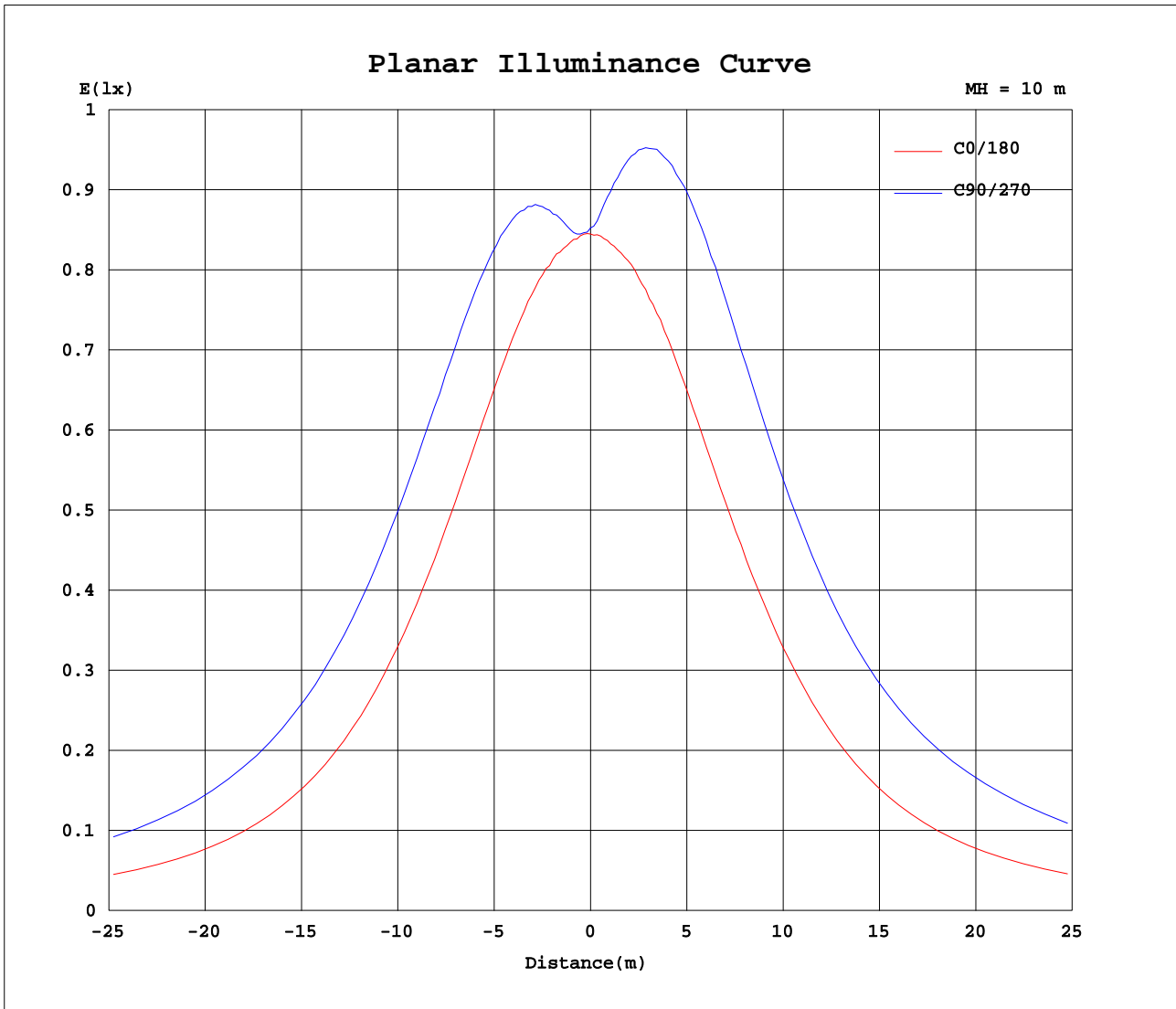
AvgL	cd/m2
L_0~180(65)av	164129
L_0~180(75)av	265461
L_0~180(85)av	645486
L_90~270(65)av	337379
L_90~270(75)av	678883
L_90~270(85)av	1982399
L_45(65)av	255030
L_45(75)av	448053
L_45(85)av	1272383

Standard: GB/T 29293-2012

C Range: 0 - 360DEG  
 C Interval: 22.5DEG  
 Test Speed: HIGH  
 Temperature:25.8DEG  
 Operators:Carl  
 Test Date:2022-06-25

γ Range: 0 - 180DEG  
 γ Interval: 1.0DEG  
 Test System:EVERFINE GO-R5000\_V2 SYSTEM V2.0.351  
 Humidity:42%  
 Test Distance:2.526m [K=1.0000]  
 Remarks:

Planar Illuminance Curve



C Range: 0 - 360DEG  
 C Interval: 22.5DEG  
 Test Speed: HIGH  
 Temperature: 25.8DEG  
 Operators: Carl  
 Test Date: 2022-06-25

$\gamma$  Range: 0 - 180DEG  
 $\gamma$  Interval: 1.0DEG  
 Test System: EVERFINE GO-R5000\_V2 SYSTEM V2.0.351  
 Humidity: 42%  
 Test Distance: 2.526m [K=1.0000]  
 Remarks:

LUMINOUS DISTRIBUTION INTENSITY DATA

Test:U:120.0V I:0.1472A P:17.29W PF:0.9787 Lamp Flux:1541.24x1 lm		
NAME: ASD-LWS27-18D18CC 4000K	TYPE:N/A	WEIGHT:N/A
SPEC.:N/A	DIM.: N/A	SERIAL No.:N/A
MFR.: ASD Lighting corp	SUR.:N/A	Shielding Angle:N/A

Table--1

UNIT: cd

C(DEG)\ γ (DEG)	0	22.5	45	67.5	90	112.5	135	157.5	180	202.5	225	247.5	270	292.5	315	337.5			
0	84.9	84.9	84.9	84.9	84.9	84.9	84.9	84.9	84.9	84.9	84.9	84.9	84.9	84.9	84.9	84.9			
5	85.2	84.6	84.9	85.2	85.3	85.2	84.9	84.7	85.1	85.8	87.7	89.4	89.7	89.3	88.0	86.1			
10	86.3	85.8	87.9	90.0	90.6	89.7	87.5	85.5	85.8	88.4	92.8	96.0	97.0	96.0	93.0	89.0			
15	87.8	88.2	92.8	96.2	97.2	95.9	92.5	88.4	87.2	92.2	98.8	103	105	104	99.3	93.1			
20	89.3	91.7	98.5	103	105	103	98.2	91.7	89.3	96.2	105	111	113	112	106	97.3			
25	91.0	95.2	104	111	113	110	104	95.4	90.6	100.0	112	120	122	120	112	101			
30	92.4	98.8	110	118	120	118	111	99.3	92.2	104	118	127	131	128	119	105			
35	93.5	102	116	125	128	125	116	102	93.3	107	123	135	138	135	124	109			
40	94.1	104	121	132	135	131	121	105	93.6	110	128	141	146	142	129	111			
45	93.6	106	124	137	140	137	125	107	93.2	111	131	147	152	147	133	113			
50	92.1	106	126	141	145	141	128	108	92.3	111	134	151	158	152	135	113			
55	89.9	106	128	144	149	144	129	108	90.3	111	135	156	163	156	136	112			
60	87.4	105	128	148	154	148	130	107	88.1	109	136	162	173	163	137	110			
65	85.9	104	129	155	164	155	131	106	87.3	109	138	174	192	177	140	110			
70	86.9	105	133	168	184	167	134	107	88.1	110	143	192	217	196	146	110			
75	84.9	105	139	186	208	187	141	107	86.7	109	148	204	231	207	151	109			
80	78.8	101	141	195	220	199	145	105	80.5	103	146	202	227	205	148	102			
85	68.6	92.2	136	192	216	196	143	97.2	71.9	92.8	136	191	215	194	138	92.1			
90	59.3	85.8	130	184	207	188	135	88.2	57.9	85.3	129	186	211	191	136	89.7			
95	49.6	91.7	135	188	210	190	137	90.8	46.1	90.7	134	192	219	198	141	96.1			
100	56.7	94.7	137	193	218	196	141	95.1	55.9	93.6	134	192	220	196	139	97.3			
105	61.0	88.4	130	188	214	193	137	89.1	60.2	88.5	129	182	207	184	132	91.8			
110	65.3	81.7	121	169	193	174	126	83.2	63.9	84.7	123	166	184	167	126	88.0			
115	70.9	81.0	115	150	167	153	116	81.3	69.4	84.4	118	152	167	154	121	87.6			
120	76.4	80.6	110	138	151	139	111	81.2	75.0	84.8	115	143	156	145	117	87.6			
125	81.2	83.0	106	130	140	131	108	81.7	79.8	86.1	111	136	148	137	113	89.4			
130	84.7	86.1	103	123	132	124	104	85.1	83.3	88.2	107	129	138	130	109	90.9			
135	87.0	88.2	98.6	117	124	118	99.7	86.9	85.7	88.9	102	122	129	122	103	91.1			
140	88.1	88.5	94.4	110	116	110	94.5	87.9	86.3	88.8	96.9	113	119	114	98.9	90.2			
145	87.8	87.1	95.6	102	107	102	94.9	87.7	85.7	86.2	95.6	103	108	105	98.6	88.5			
150	87.0	87.1	94.7	98.7	99.3	98.9	94.6	87.0	84.6	82.5	90.5	99.4	101	101	97.0	87.7			
155	86.6	86.3	91.5	97.0	97.8	96.2	92.7	86.4	83.9	80.6	87.7	94.4	97.1	97.0	93.3	87.3			
160	86.0	84.7	87.7	93.0	94.2	94.6	90.2	83.2	83.6	83.0	83.1	89.3	91.7	91.8	90.2	85.3			
165	80.3	79.8	85.7	87.5	90.3	88.9	84.2	75.7	75.1	76.0	71.1	81.7	82.9	87.4	84.9	80.8			
170	65.2	69.1	74.6	77.7	83.1	74.1	68.7	61.0	59.0	59.0	61.7	65.2	71.9	77.8	76.6	72.5			
175	48.4	48.1	59.5	61.9	58.4	54.6	46.1	45.3	43.4	43.5	43.9	45.9	53.8	56.1	60.0	63.2			
180	50.9	47.1	43.7	32.4	19.0	33.5	42.8	47.0	49.1	49.0	46.1	41.9	35.0	16.0	34.6	42.9			

C Range: 0 - 360DEG  
 C Interval: 22.5DEG  
 Test Speed: HIGH  
 Temperature:25.8DEG  
 Operators:Carl  
 Test Date:2022-06-25

γ Range: 0 - 180DEG  
 γ Interval: 1.0DEG  
 Test System:EVERFINE GO-R5000\_V2 SYSTEM V2.0.351  
 Humidity:42%  
 Test Distance:2.526m [K=1.0000]  
 Remarks: