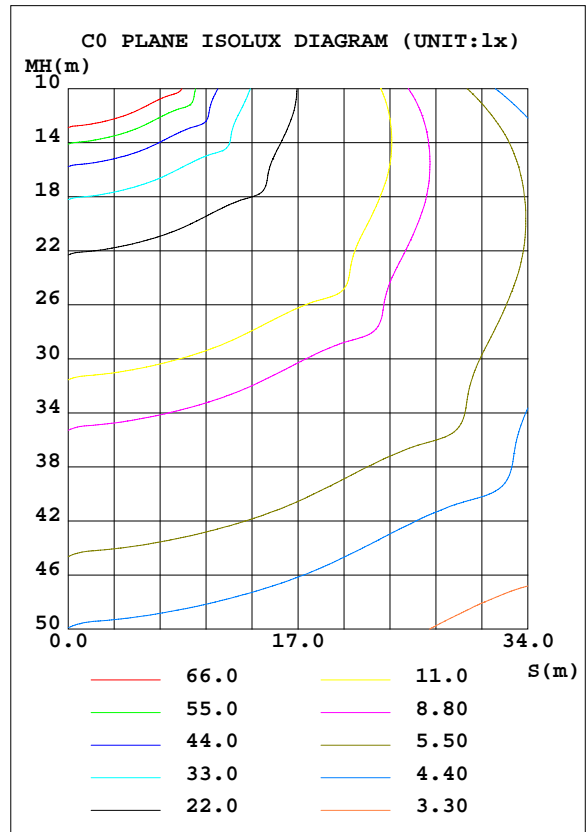
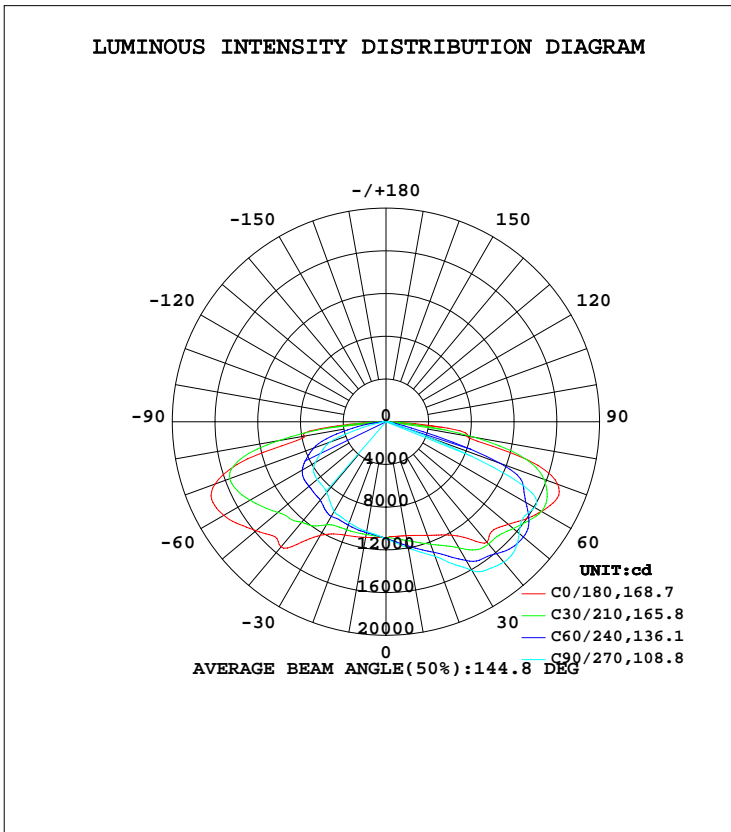


LUMINAIRE PHOTOMETRIC TEST REPORT

Test:U:120.00V I:4.1693A P:498.26W PF:0.9959 Freq:60.00Hz Lamp Flux:81773 lm		
NAME: ASD Lighting Corp	TYPE: LED	WEIGHT:
SPEC.: ASD-LSB2-500D50B-PRM	DIM.:	SERIAL No.:
MFR.: ASD Lighting Corp	SUR.:	Shielding Angle:

DATA OF LAMP		PHOTOMETRIC DATA Eff: 164,12 lm/W			
MODEL ASD-LSB2-500D50B-PRM		I _{max} (cd)	18474	S/MH(C0/180)	1.96
NOMINAL POWER(W)	500	LOR(%)	100.0	S/MH(C90/270)	1.31
RATED VOLTAGE(V)	120-277	TOTAL FLUX(lm)	81773	η UP, DN(C0-180)	0.0,54.9
NOMINAL FLUX(lm)	81773	CIE CLASS	DIRECT	η UP, DN(C180-360)	0.1,44.9
LAMPS INSIDE	1	η up(%)	0.2	CIBSE SHR NOM	1.75
TEST VOLTAGE(V)	120	η down(%)	99.8	CIBSE SHR MAX	1.75



C Range: 0 - 360DEG
 C Interval: 15.0DEG
 Test Speed: HIGH
 Temperature: 25.0DEG
 Operators: Alan Wang
 Test Date: 19 July 2021

γ Range: 0 - 180DEG
 γ Interval: 1.0DEG
 Test System: EVERFINE GO-R5000_V2 SYSTEM V2.00.442T2
 Humidity: 52.3%
 Test Distance: 2.500m [K=1.0469]
 Remarks:

ZONAL FLUX DIAGRAM

ZONAL FLUX DIAGRAM:

γ	C0	C45	C90	C135	C180	C225	C270	C315	γ	Φ zone	Φ total	%lum,lamp
10	1084	1159	1200	1162	1100	1062	1044	1048	0- 10	1048	1048	1.58,1.58
20	1132	1267	1341	1257	1130	1053	1006	1038	10- 20	3204	4252	6.43,6.43
30	1227	1429	1608	1436	1228	1067	970.3	1051	20- 30	5549	9800	14.8,14.8
40	1473	1513	1717	1535	1529	1064	864.8	1052	30- 40	8237	18038	27.3,27.3
50	1495	1615	1628	1642	1587	1068	841.1	1048	40- 50	10531	28569	43.2,43.2
60	1680	1630	1605	1660	1753	1111	765.7	1085	50- 60	12580	41149	62.2,62.2
70	1710	1405	454.3	1414	1704	1031	559.5	1036	60- 70	13458	54607	82.6,82.6
80	768.7	192.5	50.17	179.9	775.5	552.2	62.46	608.0	70- 80	8858	63465	96,96
90	18.69	0.7398	0.4883	4.246	35.66	26.86	7.216	31.55	80- 90	2520	65985	99.8,99.8
100	0.8526	0.5767	0.3449	0.6341	1.486	1.177	0.9198	1.265	90-100	61.13	66046	99.9,99.9
110	1.009	0.6921	0.4334	0.7924	1.414	1.322	1.193	1.352	100-110	10.34	66057	99.9,99.9
120	1.194	0.7889	0.5651	0.9178	1.379	1.340	1.232	1.295	110-120	10.36	66067	99.9,99.9
130	1.233	0.8515	0.6715	0.9564	1.473	1.528	1.416	1.426	120-130	10.21	66077	100,100
140	1.076	0.8610	0.7802	0.9369	1.321	1.587	1.467	1.412	130-140	9.326	66086	100,100
150	0.9469	0.8905	0.8746	0.9580	1.293	1.502	1.447	1.347	140-150	7.395	66094	100,100
160	1.035	1.030	0.9544	1.117	1.398	1.525	1.392	1.413	150-160	5.579	66099	100,100
170	1.106	1.186	1.097	1.185	1.397	1.489	1.373	1.353	160-170	3.616	66103	100,100
180	1.162	1.162	1.162	1.162	1.227	1.227	1.227	1.227	170-180	1.231	66104	100,100
DEG	LUMINOUS INTENSITY: $\times 10$ cd									UNIT:lm		

Conical surface Flux(90deg): 23042 lm

%lum = 34.9%

%lamp = 34.9%

Conical surface Flux(120deg): 41149 lm

%lum = 62.2%

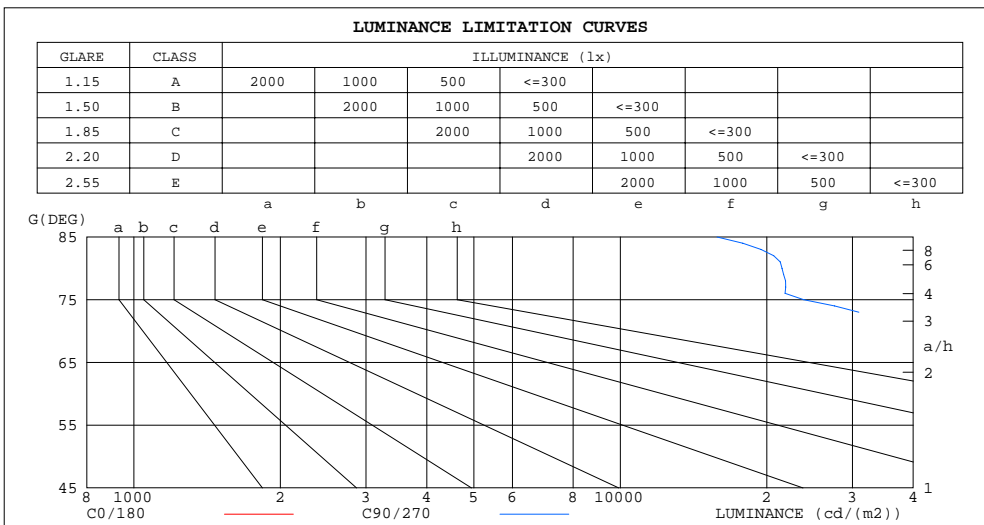
%lamp = 62.2%

C Range: 0 - 360DEG
 C Interval: 15.0DEG
 Test Speed: HIGH
 Temperature: 25.0DEG
 Operators: Alan Wang
 Test Date: 19 July 2021

γ Range: 0 - 180DEG
 γ Interval: 1.0DEG
 Test System: EVERFINE GO-R5000_V2 SYSTEM V2.00.442T2
 Humidity: 52.3%
 Test Distance: 2.500m [K=1.0469]
 Remarks:

LUMINANCE LIMITATION CURVES

Test:U:120.00V I:4.1693A P:498.26W PF:0.9959 Freq:60.00Hz Lamp Flux:81773 lm		
NAME: ASD Lighting Corp	TYPE: LED	WEIGHT:
SPEC.: ASD-LSB2-500D50[B,W]-PRM	DIM.:	SERIAL No.:
MFR.: ASD Lighting Corp	SUR.:	Shielding Angle:



LUMINANCE cd/(m2)		
G(DEG)	C0/180	C90/270
85	368506	15809
80	329394	21498
75	391529	23831
70	371931	98822
65	307930	251681
60	249976	238909
55	206420	203507
50	173013	188451
45	150361	179280

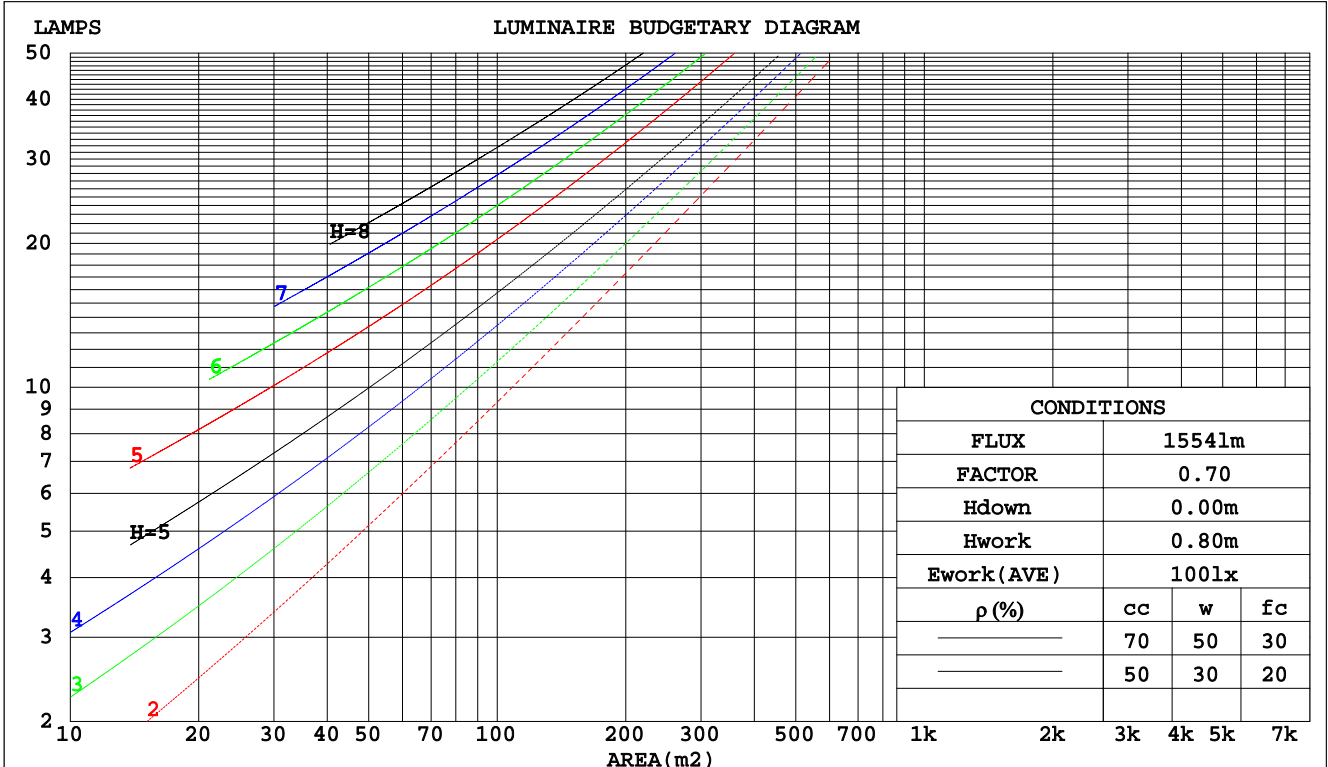
C Range: 0 - 360DEG
 C Interval: 15.0DEG
 Test Speed: HIGH
 Temperature: 25.0DEG
 Operators: Alan Wang
 Test Date: 19 July 2021

γ Range: 0 - 180DEG
 γ Interval: 1.0DEG
 Test System: EVERFINE GO-R5000_V2 SYSTEM V2.00.442T2
 Humidity: 52.3%
 Test Distance: 2.500m [K=1.0469]
 Remarks:

CU AND LUMINAIRE BUDGETARY ESTIMATE DIAGRAM

Test:U:120.00V I:4.1693A P:498.26W PF:0.9959 Freq:60.00Hz Lamp Flux:81773 lm		
NAME: ASD Lighting Corp	TYPE: LED	WEIGHT:
SPEC.: ASD-LSB2-500D50[B,W]-PRM	DIM.:	SERIAL No.:
MFR.: ASD Lighting Corp	SUR.:	Shielding Angle:

pcc	80%			70%			50%			30%			10%			0
pw	50%	30%	10%	50%	30%	10%	50%	30%	10%	50%	30%	10%	50%	30%	10%	0
pfc	20%			20%			20%			20%			20%			0
RCR	RCR:Room Cavity Ratio						Coefficients of Utilization(CU)									
0.0	1.19	1.19	1.19	1.16	1.16	1.16	1.11	1.11	1.11	1.06	1.06	1.06	1.02	1.02	1.02	.00
1.0	.00	.94	.89	.97	.92	.88	.93	.89	.85	.89	.85	.82	.85	.82	.80	.77
2.0	.84	.75	.68	.82	.74	.67	.78	.71	.65	.74	.69	.64	.71	.66	.62	.60
3.0	.71	.61	.53	.69	.60	.53	.66	.58	.52	.63	.56	.51	.60	.55	.50	.47
4.0	.61	.51	.43	.60	.50	.43	.57	.49	.42	.55	.47	.41	.52	.46	.41	.38
5.0	.54	.43	.35	.52	.43	.35	.50	.41	.35	.48	.40	.34	.46	.39	.34	.31
6.0	.47	.37	.30	.46	.37	.30	.44	.36	.29	.43	.35	.29	.41	.34	.29	.26
7.0	.42	.32	.26	.41	.32	.25	.40	.31	.25	.38	.31	.25	.37	.30	.25	.22
8.0	.38	.29	.22	.37	.28	.22	.36	.28	.22	.35	.27	.22	.33	.27	.21	.19
9.0	.35	.26	.19	.34	.25	.19	.33	.25	.19	.32	.24	.19	.31	.24	.19	.17
10.0	.32	.23	.17	.31	.23	.17	.30	.22	.17	.29	.22	.17	.28	.22	.17	.15



C Range: 0 - 360DEG
 C Interval: 15.0DEG
 Test Speed: HIGH
 Temperature: 25.0DEG
 Operators: Alan Wang
 Test Date: 19 July 2021

γ Range: 0 - 180DEG
 γ Interval: 1.0DEG
 Test System: EVERFINE GO-R5000_V2 SYSTEM V2.00.442T2
 Humidity: 52.3%
 Test Distance: 2.500m [K=1.0469]
 Remarks:

WEC AND CCEC

Test:U:120.00V I:4.1693A P:498.26W PF:0.9959 Freq:60.00Hz Lamp Flux:81773 lm		
NAME: ASD Lighting Corp	TYPE: LED	WEIGHT:
SPEC.: ASD-LSB2-500D50[B,W]-PRM	DIM.:	SERIAL No.:
MFR.: ASD Lighting Corp	SUR.:	Shielding Angle:

ρcc	80%			70%			50%			30%			10%			0
ρw	50%	30%	10%	50%	30%	10%	50%	30%	10%	50%	30%	10%	50%	30%	10%	0
ρfc	20%			20%			20%			20%			20%			0
RCR	RCR:Room Cavity Ratio						Wall Exitance Coefficients(WEC)									
0.0																
1.0	.391	.222	.070	.383	.219	.069	.370	.212	.068	.357	.206	.066	.345	.200	.065	
2.0	.358	.196	.060	.351	.193	.060	.339	.188	.058	.327	.184	.057	.317	.179	.056	
3.0	.323	.172	.052	.317	.170	.051	.306	.166	.050	.296	.162	.050	.286	.159	.049	
4.0	.292	.152	.045	.287	.150	.044	.277	.147	.044	.268	.144	.043	.259	.141	.043	
5.0	.266	.135	.039	.261	.134	.039	.252	.131	.039	.244	.129	.038	.236	.126	.038	
6.0	.243	.122	.035	.239	.121	.035	.231	.118	.034	.223	.116	.034	.217	.114	.034	
7.0	.223	.110	.031	.219	.109	.031	.212	.107	.031	.206	.106	.031	.200	.104	.031	
8.0	.206	.101	.028	.203	.100	.028	.197	.098	.028	.191	.097	.028	.185	.095	.028	
9.0	.191	.093	.026	.189	.092	.026	.183	.090	.026	.178	.089	.025	.173	.088	.025	
10.0	.179	.086	.024	.176	.085	.024	.171	.084	.024	.166	.083	.023	.162	.081	.023	

ρcc	80%			70%			50%			30%			10%			0
ρw	50%	30%	10%	50%	30%	10%	50%	30%	10%	50%	30%	10%	50%	30%	10%	0
ρfc	20%			20%			20%			20%			20%			0
RCR	RCR:Room Cavity Ratio						Ceiling Cavity Exitance Coefficients(CCEC)									
0.0	.192	.192	.192	.164	.164	.164	.112	.112	.112	.064	.064	.064	.021	.021	.021	
1.0	.187	.157	.129	.160	.135	.111	.110	.093	.077	.063	.054	.045	.020	.017	.014	
2.0	.182	.133	.091	.156	.114	.079	.107	.079	.055	.062	.046	.032	.020	.015	.011	
3.0	.176	.116	.068	.151	.100	.059	.104	.070	.041	.060	.041	.024	.019	.013	.008	
4.0	.169	.103	.053	.145	.089	.046	.100	.062	.033	.058	.036	.019	.019	.012	.006	
5.0	.161	.093	.043	.138	.081	.038	.095	.056	.027	.055	.033	.016	.018	.011	.005	
6.0	.154	.085	.036	.132	.074	.032	.091	.052	.022	.053	.030	.013	.017	.010	.004	
7.0	.146	.079	.031	.126	.068	.027	.087	.048	.019	.050	.028	.012	.016	.009	.004	
8.0	.139	.073	.028	.120	.063	.024	.083	.044	.017	.048	.026	.010	.016	.009	.003	
9.0	.132	.068	.025	.114	.059	.021	.079	.041	.015	.046	.024	.009	.015	.008	.003	
10.0	.126	.064	.022	.108	.055	.019	.075	.039	.014	.044	.023	.008	.014	.008	.003	

C Range: 0 - 360DEG
 C Interval: 15.0DEG
 Test Speed: HIGH
 Temperature: 25.0DEG
 Operators: Alan Wang
 Test Date: 19 July 2021

γ Range: 0 - 180DEG
 γ Interval: 1.0DEG
 Test System: EVERFINE GO-R5000_V2 SYSTEM V2.00.442T2
 Humidity: 52.3%
 Test Distance: 2.500m [K=1.0469]
 Remarks:

UGR(Unified Glare Rating) Table

Test:U:120.00V I:4.1693A P:498.26W PF:0.9959 Freq:60.00Hz Lamp Flux:81773 lm										
NAME: ASD Lighting Corp					TYPE: LED			WEIGHT:		
SPEC.: ASD-LSB2-500D50[B,W]-PRM					DIM.:			SERIAL No.:		
MFR.: ASD Lighting Corp					SUR.:			Shielding Angle:		
ceiling/cavity	0.7	0.7	0.5	0.5	0.3	0.7	0.7	0.5	0.5	0.3
walls	0.5	0.3	0.5	0.3	0.3	0.5	0.3	0.5	0.3	0.3
working plane	0.2	0.2	0.2	0.2	0.2	0.2	0.2	0.2	0.2	0.2
Room dimensions	Viewed crosswise					Viewed endwise				
x = 2H y = 2H	32.4	34.3	32.8	34.6	34.9	31.9	33.7	32.2	34.0	34.4
3H	36.4	38.1	36.8	38.5	38.8	33.5	35.2	33.9	35.5	35.9
4H	37.9	39.5	38.3	39.8	40.2	33.5	35.1	33.9	35.4	35.8
6H	38.5	40.1	38.9	40.4	40.8	33.4	34.9	33.8	35.3	35.7
8H	38.9	40.3	39.3	40.7	41.1	33.4	34.9	33.8	35.3	35.7
12H	39.2	40.6	39.6	41.0	41.4	33.4	34.8	33.8	35.2	35.6
4H 2H	33.3	35.0	33.7	35.3	35.7	33.0	34.6	33.4	35.0	35.4
3H	37.4	38.8	37.8	39.2	39.6	34.9	36.3	35.3	36.7	37.1
4H	39.1	40.4	39.5	40.8	41.2	34.9	36.1	35.3	36.5	37.0
6H	39.9	41.0	40.3	41.5	41.9	34.8	36.0	35.3	36.4	36.9
8H	40.3	41.3	40.7	41.8	42.2	34.8	35.9	35.3	36.3	36.8
12H	40.7	41.6	41.1	42.1	42.6	34.8	35.8	35.3	36.3	36.7
8H 4H	39.3	40.4	39.8	40.8	41.3	35.6	36.7	36.1	37.1	37.6
6H	40.4	41.2	40.8	41.7	42.2	35.6	36.5	36.1	37.0	37.5
8H	40.8	41.6	41.3	42.1	42.6	35.6	36.4	36.1	36.9	37.4
12H	41.3	42.0	41.8	42.5	43.1	35.6	36.3	36.1	36.8	37.3
12H 4H	39.3	40.3	39.8	40.8	41.2	35.8	36.7	36.2	37.2	37.7
6H	40.4	41.2	40.9	41.6	42.2	35.7	36.5	36.3	37.0	37.5
8H	40.9	41.6	41.4	42.1	42.6	35.7	36.4	36.2	36.9	37.5
CIE190: 2010										

CIE190: 2010
Area: 0.1344 m2

C Range: 0 - 360DEG
C Interval: 15.0DEG
Test Speed: HIGH
Temperature: 25.0DEG
Operators: Alan Wang
Test Date: 19 July 2021

γ Range: 0 - 180DEG
γ Interval: 1.0DEG
Test System: EVERFINE GO-R5000_V2 SYSTEM V2.00.442T2
Humidity: 52.3%
Test Distance: 2.500m [K=1.0469]
Remarks:

UTILIZATION FACTORS TABLE

Test:U:120.00V I:4.1693A P:498.26W PF:0.9959 Freq:60.00Hz Lamp Flux:81773 lm		
NAME: ASD Lighting Corp	TYPE: LED	WEIGHT:
SPEC.: ASD-LSB2-500D50[B,W]-PRM	DIM.:	SERIAL No.:
MFR.: ASD Lighting Corp	SUR.:	Shielding Angle:

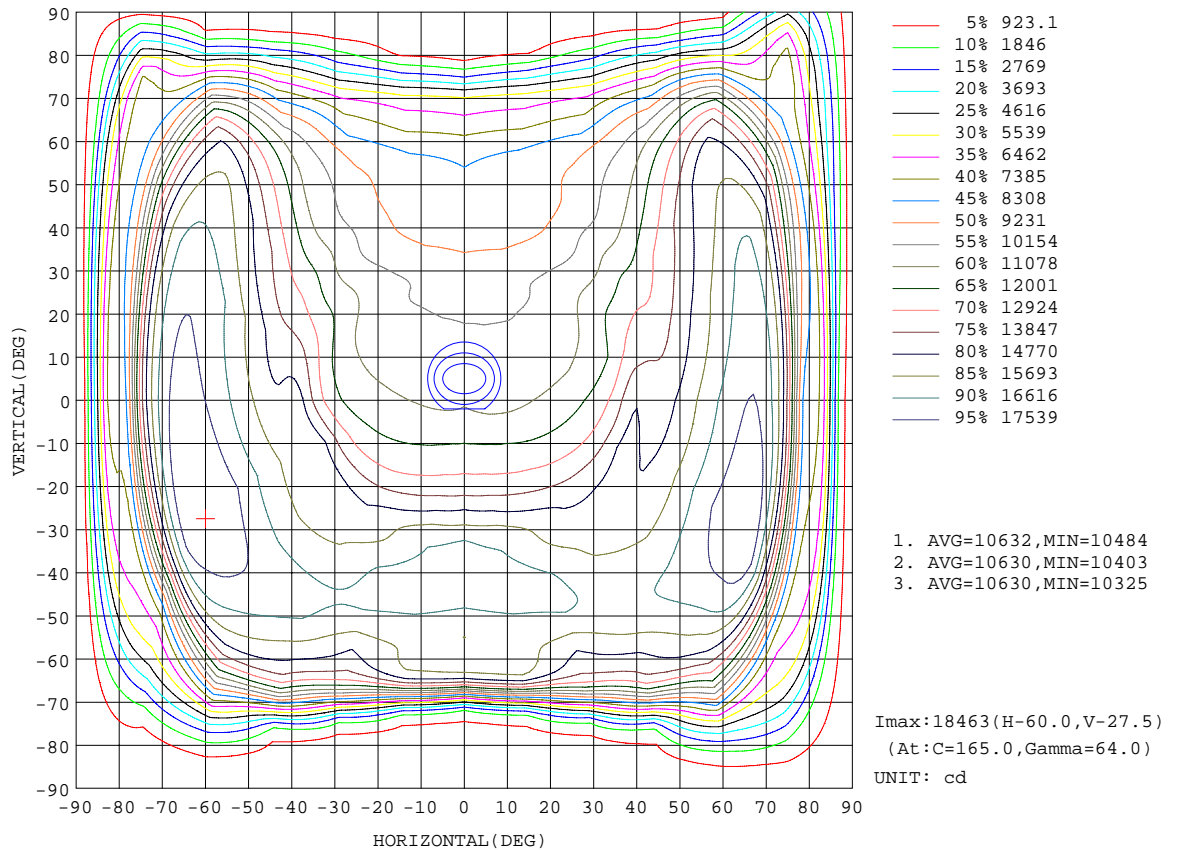
REFLECTANCE										
Ceiling	0.8	0.8	0.8	0.7	0.7	0.7	0.5	0.5	0.5	0
Walls	0.7	0.5	0.3	0.7	0.5	0.3	0.7	0.5	0.3	0
Working plane	0.2	0.2	0.2	0.2	0.2	0.2	0.2	0.2	0.2	0
ROOM INDEX	UTILIZATION FACTORS(PERCENT) $k(RI) \times RCR = 5$									
k = 0.60	48	35	27	47	35	27	46	34	27	19
0.80	58	44	35	57	44	35	55	43	35	27
1.00	66	53	44	65	52	44	62	54	43	35
1.25	74	61	52	72	60	52	69	59	51	42
1.50	80	67	58	78	66	58	74	64	57	48
2.00	88	77	69	86	76	68	82	73	66	57
2.50	93	83	75	91	82	74	86	79	73	63
3.00	97	88	81	95	87	80	90	84	78	68
4.00	102	95	89	100	93	88	95	90	85	75
5.00	105	99	94	103	97	93	98	94	90	80
ROOM INDEX	UF(total)									Direct
According to DIN EN 13032-2 2004			Suspended				SHRNOM = 1.25			

C Range: 0 - 360DEG
 C Interval: 15.0DEG
 Test Speed: HIGH
 Temperature: 25.0DEG
 Operators: Alan Wang
 Test Date: 19 July 2021

γ Range: 0 - 180DEG
 γ Interval: 1.0DEG
 Test System: EVERFINE GO-R5000_V2 SYSTEM V2.00.442T2
 Humidity: 52.3%
 Test Distance: 2.500m [K=1.0469]
 Remarks:

ISOCANDELA DIAGRAM

Test:U:120.00V I:4.1693A P:498.26W PF:0.9959 Freq:60.00Hz Lamp Flux:81773 lm		
NAME: ASD Lighting Corp	TYPE: LED	WEIGHT:
SPEC.: ASD-LSB2-500D50[B,W]-PRM	DIM.:	SERIAL No.:
MFR.: ASD Lighting Corp	SUR.:	Shielding Angle:

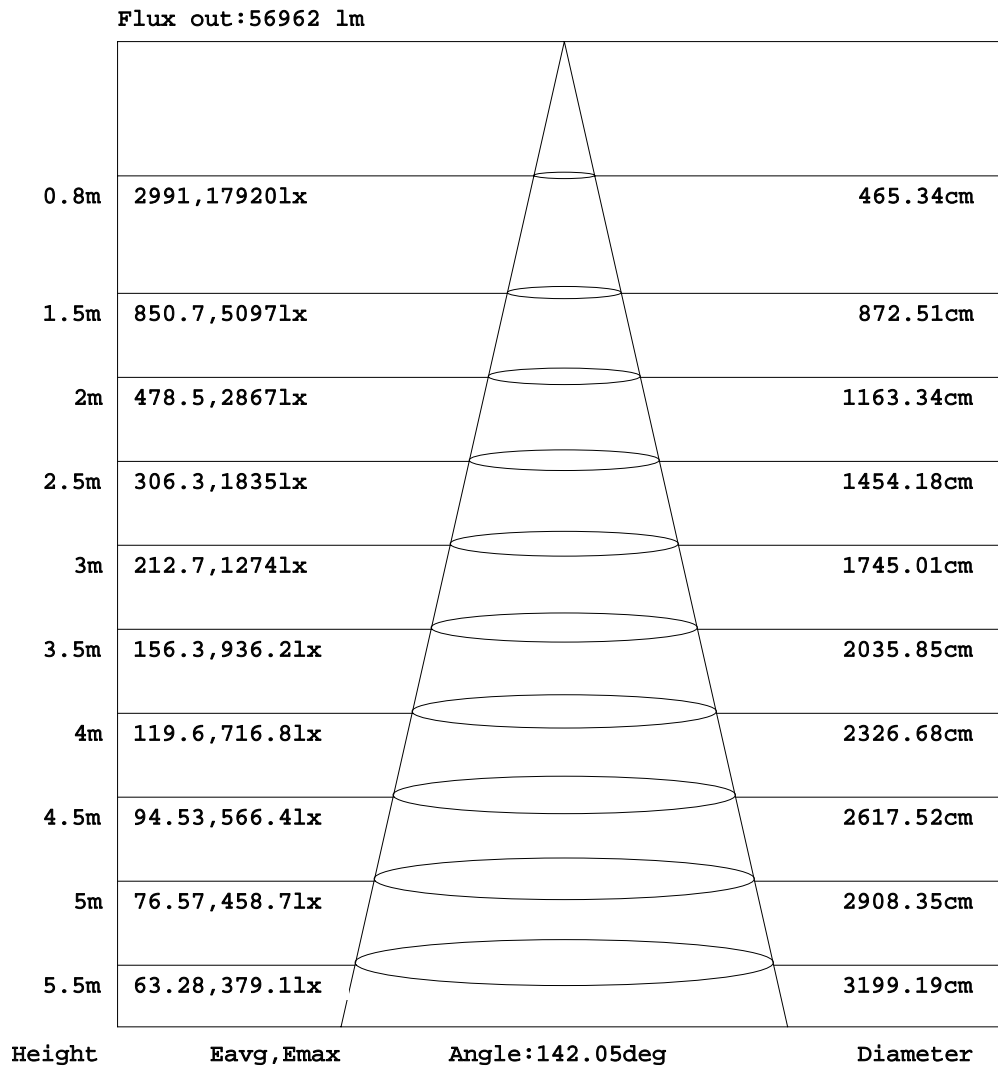


C Range: 0 - 360DEG
 C Interval: 15.0DEG
 Test Speed: HIGH
 Temperature: 25.0DEG
 Operators: Alan Wang
 Test Date: 19 July 2021

γ Range: 0 - 180DEG
 γ Interval: 1.0DEG
 Test System: EVERFINE GO-R5000_V2 SYSTEM V2.00.442T2
 Humidity: 52.3%
 Test Distance: 2.500m [K=1.0469]
 Remarks:

AAI Figure

Test:U:120.00V I:4.1693A P:498.26W PF:0.9959 Freq:60.00Hz Lamp Flux:81773 lm		
NAME: ASD Lighting Corp	TYPE: LED	WEIGHT:
SPEC.: ASD-LSB2-500D50[B,W]-PRM	DIM.:	SERIAL No.:
MFR.: ASD Lighting Corp	SUR.:	Shielding Angle:



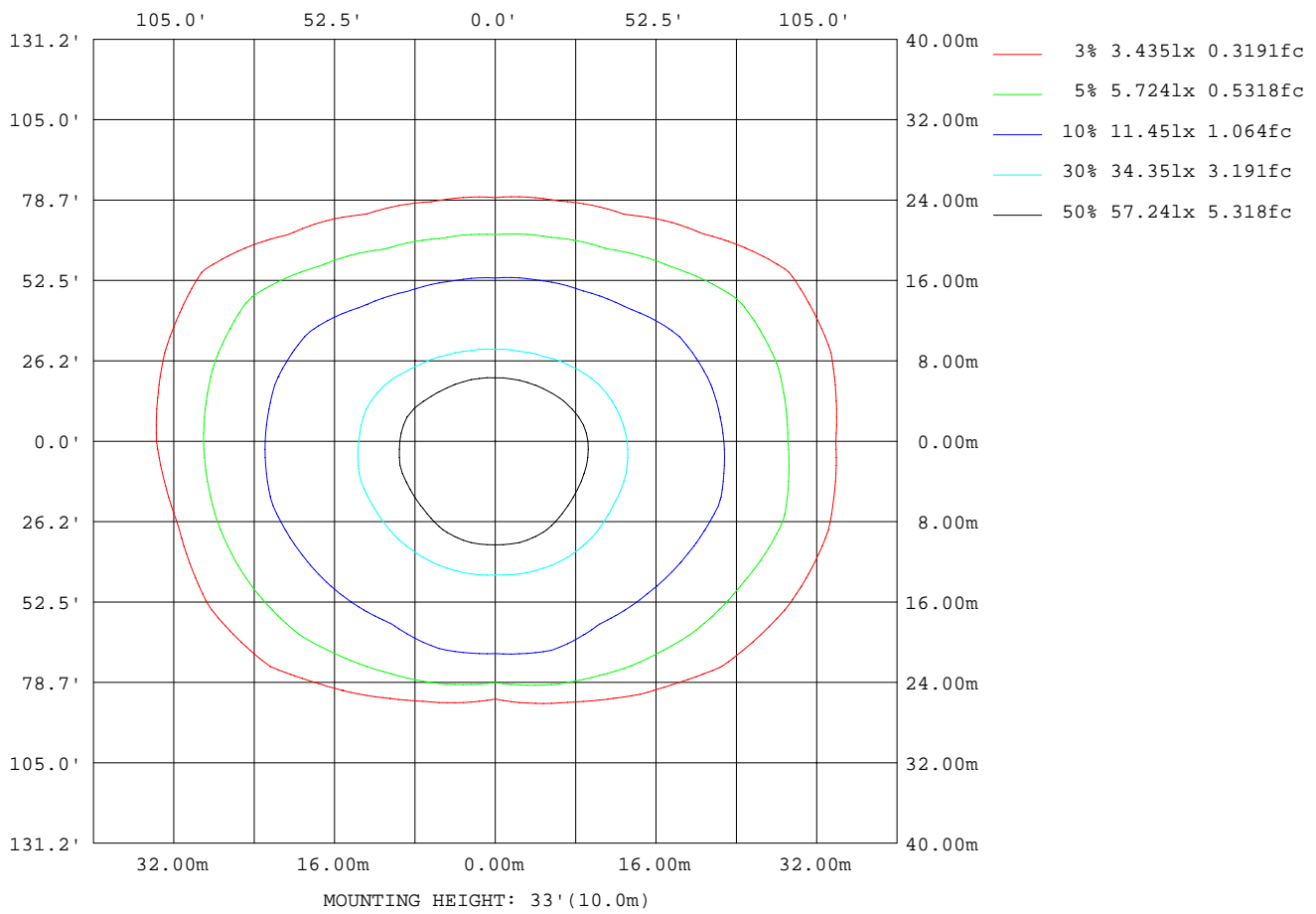
Note:The Curves indicate the illuminated area and the average illumination when the luminaire is at different distance.

C Range: 0 - 360DEG
 C Interval: 15.0DEG
 Test Speed: HIGH
 Temperature: 25.0DEG
 Operators:Alan Wang
 Test Date:19 July 2021

γ Range: 0 - 180DEG
 γ Interval: 1.0DEG
 Test System:EVERFINE GO-R5000_V2 SYSTEM V2.00.442T2
 Humidity: 52.3%
 Test Distance:2.500m [K=1.0469]
 Remarks:

ISOLUX DIAGRAM

Test:U:120.00V I:4.1693A P:498.26W PF:0.9959 Freq:60.00Hz Lamp Flux:81773 lm		
NAME: ASD Lighting Corp	TYPE: LED	WEIGHT:
SPEC.: ASD-LSB2-500D50[B,W]-PRM	DIM.:	SERIAL No.:
MFR.: ASD Lighting Corp	SUR.:	Shielding Angle:



C Range: 0 - 360DEG
 C Interval: 15.0DEG
 Test Speed: HIGH
 Temperature: 25.0DEG
 Operators: Alan Wang
 Test Date: 19 July 2021

γ Range: 0 - 180DEG
 γ Interval: 1.0DEG
 Test System: EVERFINE GO-R5000_V2 SYSTEM V2.00.442T2
 Humidity: 52.3%
 Test Distance: 2.500m [K=1.0469]
 Remarks:

LED Avg.L Report

Test:U:120.00V I:4.1693A P:498.26W PF:0.9959 Freq:60.00Hz Lamp Flux:81773 lm		
NAME: ASD Lighting Corp	TYPE: LED	WEIGHT:
SPEC.: ASD-LSB2-500D50[B,W]-PRM	DIM.:	SERIAL No.:
MFR.: ASD Lighting Corp	SUR.:	Shielding Angle:

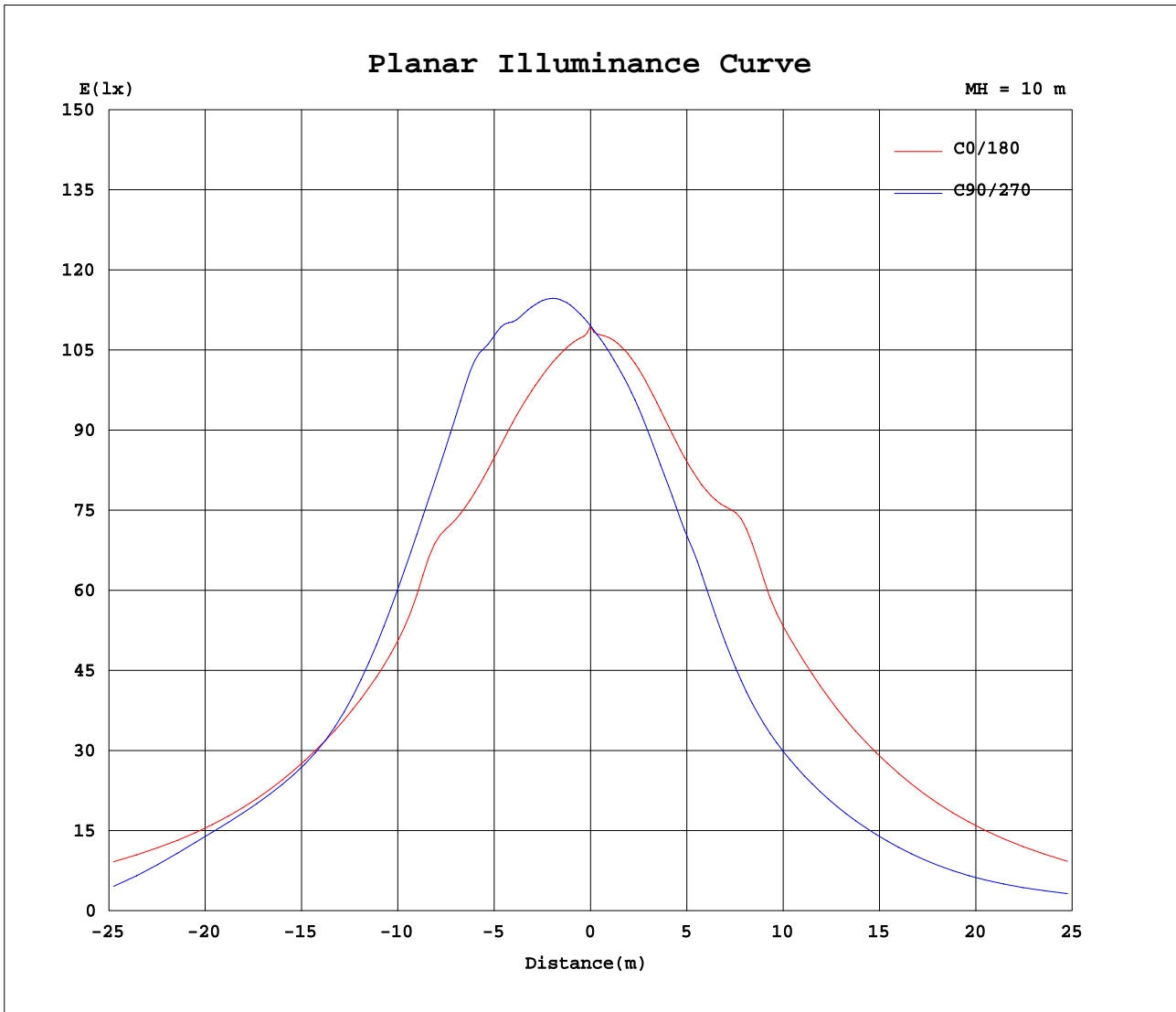
AvgL	cd/m2
L_0~180(65)av	311384
L_0~180(75)av	388443
L_0~180(85)av	380281
L_90~270(65)av	184332
L_90~270(75)av	51092
L_90~270(85)av	22082
L_45(65)av	231918
L_45(75)av	261698
L_45(85)av	114161

Standard: GB/T 29293-2012

C Range: 0 - 360DEG
 C Interval: 15.0DEG
 Test Speed: HIGH
 Temperature: 25.0DEG
 Operators: Alan Wang
 Test Date: 19 July 2021

γ Range: 0 - 180DEG
 γ Interval: 1.0DEG
 Test System: EVERFINE GO-R5000_V2 SYSTEM V2.00.442T2
 Humidity: 52.3%
 Test Distance: 2.500m [K=1.0469]
 Remarks:

Planar Illuminance Curve



C Range: 0 - 360DEG
 C Interval: 15.0DEG
 Test Speed: HIGH
 Temperature: 25.0DEG
 Operators: Alan Wang
 Test Date: 19 July 2021

γ Range: 0 - 180DEG
 γ Interval: 1.0DEG
 Test System: EVERFINE GO-R5000_V2 SYSTEM V2.00.442T2
 Humidity: 52.3%
 Test Distance: 2.500m [K=1.0469]
 Remarks:

LUMINOUS DISTRIBUTION INTENSITY DATA

Test:U:120.00V I:4.1693A P:498.26W PF:0.9959 Freq:60.00Hz Lamp Flux:81773 lm		
NAME: ASD Lighting Corp	TYPE: LED	WEIGHT:
SPEC.: ASD-LSB2-500D50[B,W]-PRM	DIM.:	SERIAL No.:
MFR.: ASD Lighting Corp	SUR.:	Shielding Angle:

Table--1

UNIT: x10cd

C(DEG) γ (DEG)	0	15	30	45	60	75	90	105	120	135	150	165	180	195	210	225	240	255	270
0	1095	1095	1095	1095	1095	1095	1095	1095	1095	1095	1095	1095	1095	1095	1095	1095	1095	1095	1095
5	1077	1088	1101	1117	1130	1138	1142	1139	1133	1122	1109	1097	1087	1079	1074	1071	1068	1065	1064
10	1084	1105	1130	1159	1180	1194	1200	1195	1181	1162	1140	1118	1100	1084	1072	1062	1054	1048	1044
15	1102	1134	1170	1210	1237	1256	1264	1254	1233	1205	1173	1141	1114	1092	1075	1059	1045	1033	1027
20	1132	1174	1221	1267	1300	1329	1341	1326	1294	1257	1217	1174	1130	1101	1077	1053	1030	1014	1006
25	1171	1223	1279	1336	1390	1443	1468	1444	1387	1329	1282	1233	1159	1117	1081	1048	1018	996	986
30	1227	1294	1364	1429	1500	1574	1608	1583	1506	1436	1399	1351	1228	1164	1114	1067	1024	989	970
35	1332	1423	1464	1484	1569	1656	1682	1662	1571	1491	1506	1528	1377	1291	1191	1087	999	942	914
40	1473	1506	1494	1513	1612	1700	1717	1705	1623	1535	1536	1536	1529	1405	1230	1064	959	894	865
45	1429	1477	1501	1562	1667	1716	1704	1718	1679	1582	1560	1578	1507	1429	1278	1086	949	872	844
50	1495	1548	1555	1615	1680	1670	1628	1671	1678	1642	1631	1656	1587	1511	1321	1068	941	869	841
55	1591	1645	1622	1653	1633	1595	1569	1595	1627	1684	1698	1751	1676	1600	1396	1085	938	858	826
60	1680	1742	1681	1630	1513	1599	1605	1584	1507	1660	1738	1823	1753	1685	1469	1111	905	800	766
65	1749	1829	1665	1515	1418	1547	1430	1505	1407	1554	1692	1844	1788	1733	1533	1109	823	699	664
70	1710	1831	1575	1405	1137	724	454	704	1098	1414	1560	1698	1704	1687	1557	1031	720	599	560
75	1362	1415	1356	959	359	112	82.9	107	348	961	1239	1038	1340	1444	1437	844	531	347	273
80	769	707	847	193	79.7	54.2	50.2	53.3	75.8	180	673	585	776	923	1028	552	273	98.3	62.5
85	432	399	236	51.3	30.3	22.3	18.5	21.2	27.8	44.6	159	177	459	803	380	192	82.5	35.0	33.2
90	18.7	21.6	9.90	0.74	0.59	4.03	0.49	3.74	4.62	4.25	6.10	8.31	35.7	69.3	31.3	26.9	10.9	8.01	7.22
95	0.84	0.69	0.60	0.51	0.37	0.29	0.27	0.33	0.44	0.55	0.65	0.78	1.43	1.38	1.38	1.17	0.92	0.77	0.73
100	0.85	0.75	0.66	0.58	0.44	0.35	0.34	0.41	0.53	0.63	0.74	0.84	1.49	1.45	1.34	1.18	1.09	0.96	0.92
105	0.92	0.81	0.72	0.63	0.49	0.40	0.40	0.48	0.59	0.71	0.82	0.91	1.48	1.43	1.37	1.29	1.25	1.16	1.13
110	1.01	0.90	0.80	0.69	0.53	0.44	0.43	0.53	0.66	0.79	0.93	1.00	1.41	1.37	1.31	1.32	1.30	1.24	1.19
115	1.09	0.98	0.85	0.74	0.60	0.50	0.50	0.60	0.73	0.88	0.99	1.09	1.38	1.35	1.31	1.31	1.29	1.21	1.16
120	1.19	1.09	0.92	0.79	0.66	0.56	0.57	0.63	0.78	0.92	1.05	1.19	1.38	1.38	1.33	1.34	1.31	1.24	1.23
125	1.23	1.13	0.95	0.85	0.71	0.61	0.61	0.67	0.81	0.97	1.09	1.22	1.44	1.48	1.42	1.40	1.38	1.32	1.33
130	1.23	1.13	0.97	0.85	0.78	0.67	0.67	0.73	0.86	0.96	1.09	1.19	1.47	1.55	1.54	1.53	1.45	1.42	1.42
135	1.16	1.09	0.97	0.84	0.79	0.72	0.74	0.79	0.86	0.95	1.05	1.13	1.42	1.56	1.61	1.58	1.53	1.49	1.45
140	1.08	1.04	0.94	0.86	0.80	0.78	0.78	0.82	0.87	0.94	0.97	1.06	1.32	1.48	1.54	1.59	1.53	1.53	1.47
145	1.00	0.99	0.92	0.86	0.86	0.85	0.84	0.87	0.91	0.93	0.94	1.00	1.30	1.44	1.50	1.56	1.54	1.51	1.43
150	0.95	0.97	0.93	0.89	0.87	0.86	0.87	0.91	0.94	0.96	0.96	0.99	1.29	1.40	1.45	1.50	1.53	1.50	1.45
155	0.98	1.02	1.02	0.94	0.93	0.94	0.93	0.97	1.02	1.03	1.05	1.06	1.32	1.39	1.45	1.51	1.51	1.50	1.42
160	1.04	1.07	1.07	1.03	0.98	1.00	0.95	1.05	1.10	1.12	1.11	1.09	1.40	1.43	1.48	1.52	1.52	1.50	1.39
165	1.05	1.12	1.13	1.12	1.08	1.07	1.06	1.11	1.17	1.17	1.15	1.15	1.40	1.43	1.46	1.54	1.56	1.52	1.41
170	1.11	1.16	1.19	1.19	1.12	1.10	1.10	1.12	1.18	1.18	1.18	1.19	1.40	1.40	1.43	1.49	1.52	1.49	1.37
175	1.23	1.29	1.28	1.26	1.20	1.19	1.16	1.18	1.23	1.25	1.27	1.29	1.35	1.36	1.39	1.43	1.44	1.42	1.32
180	1.16	1.16	1.16	1.16	1.16	1.16	1.16	1.16	1.16	1.16	1.16	1.16	1.23	1.23	1.23	1.23	1.23	1.23	1.23

C Range: 0 - 360DEG
 C Interval: 15.0DEG
 Test Speed: HIGH
 Temperature: 25.0DEG
 Operators: Alan Wang
 Test Date: 19 July 2021

γ Range: 0 - 180DEG
 γ Interval: 1.0DEG
 Test System: EVERFINE GO-R5000_V2 SYSTEM V2.00.442T2
 Humidity: 52.3%
 Test Distance: 2.500m [K=1.0469]
 Remarks:

LUMINOUS DISTRIBUTION INTENSITY DATA

Test:U:120.00V I:4.1693A P:498.26W PF:0.9959 Freq:60.00Hz Lamp Flux:81773 lm		
NAME: ASD Lighting Corp	TYPE: LED	WEIGHT:
SPEC.: ASD-LSB2-500D50[B,W]-PRM	DIM.:	SERIAL No.:
MFR.: ASD Lighting Corp	SUR.:	Shielding Angle:

Table--2

UNIT: x10cd

C(DEG) γ (DEG)	285	300	315	330	345														
0	1095	1095	1095	1095	1095														
5	1063	1063	1064	1066	1069														
10	1043	1044	1048	1055	1063														
15	1027	1032	1042	1054	1067														
20	1008	1018	1038	1060	1084														
25	992	1010	1038	1073	1107														
30	982	1011	1051	1098	1140														
35	932	986	1072	1159	1207														
40	885	947	1052	1199	1320														
45	864	930	1065	1236	1357														
50	866	924	1048	1255	1387														
55	861	932	1061	1317	1472														
60	814	913	1085	1385	1564														
65	710	833	1091	1455	1641														
70	609	719	1036	1508	1676														
75	378	561	877	1466	1555														
80	119	306	608	1159	1129														
85	36.9	99.1	247	544	801														
90	8.91	13.3	31.6	59.9	440														
95	0.77	0.98	2.32	3.85	6.03														
100	1.01	1.13	1.27	1.36	1.41														
105	1.20	1.25	1.38	1.41	1.45														
110	1.19	1.26	1.35	1.36	1.40														
115	1.18	1.26	1.31	1.30	1.38														
120	1.22	1.31	1.30	1.29	1.37														
125	1.31	1.34	1.33	1.35	1.42														
130	1.40	1.38	1.43	1.43	1.50														
135	1.45	1.46	1.40	1.49	1.53														
140	1.40	1.37	1.41	1.46	1.51														
145	1.36	1.37	1.38	1.41	1.44														
150	1.41	1.38	1.35	1.39	1.40														
155	1.37	1.35	1.40	1.44	1.41														
160	1.38	1.38	1.41	1.53	1.48														
165	1.32	1.37	1.44	1.52	1.49														
170	1.31	1.32	1.35	1.45	1.42														
175	1.28	1.27	1.28	1.37	1.32														
180	1.23	1.23	1.23	1.23	1.23														

C Range: 0 - 360DEG
 C Interval: 15.0DEG
 Test Speed: HIGH
 Temperature: 25.0DEG
 Operators: Alan Wang
 Test Date: 19 July 2021

γ Range: 0 - 180DEG
 γ Interval: 1.0DEG
 Test System: EVERFINE GO-R5000_V2 SYSTEM V2.00.442T2
 Humidity: 52.3%
 Test Distance: 2.500m [K=1.0469]
 Remarks: