



LED LOW-PROFILE CANOPY

► **DESIGN & OPTIONS** - LED LOW-PROFILE CANOPY is designed with rustproof, die-cast aluminum housing and finished with a UV stabilized powder coat paint. This means it is protected against fade and wear and will maintain its durability over time. This fixture provides optimal lighting without any blind spots, while the lens ensures uniform lighting. It is also CCT adjustable, letting you to set 3,000K, 4,000K or 5,000K. It runs on 120-277V and comes with a 1-10V dimmable driver and a BRONZE finish.



Models with a built-in microwave motion sensor automatically turn off in the absence of motion and can be programmed via dip switch or wireless remote.



Models with a built-in battery back-up provide 90 minutes of power in case of emergency.

► **INSTALLATION** - The fixture can be either surface mounted (directly on surface or with surface mounting plate) or pole mounted. Refer to installation instructions for detailed steps.

► **APPLICATION** - These fixtures can operate in temperatures between -40° to 122°F (-40° to 50°C), allowing them to be utilized in a wide variety of applications and climates. This makes them perfect for commercial spaces such as: parking garages, gas stations, stairwells, passageways, toll booths, waiting rooms, underpasses, and more.

► **ENERGY SAVING & EFFICIENCY** - With a calculated lifespan up to 150,000 hours, these fixtures are made to last decades under normal operation! This fixture can cut your electric bill by up to 80% instantly and will save you a significant amount of money in its lifetime.

► **CERTIFICATION & WARRANTY** - Buy with confidence: ASD provides a 5-year limited warranty along with UL certification to guarantee top quality products and safety!

DLC Premium classification allows participation in rebates; please check the rebate programs available in your state.

Catalog number	
Notes	
Type	



Model	Watts	Voltage	Dimmable	Lumens	CCT	Finish	Dimensions (LxWxH)	Option	
ASD-CAN07-45DAC-BZ	45W	120-277 V	1-10 V	6,230/6,916/6,900 lm	3CCT (3,000/4,000/5,000 K)	Bronze	10-1/2" x 9-5/8" x 2-7/8"	-	
ASD-CAN07-70DAC-BZ	70W	120-277 V	1-10 V	8,381/9,331/8,945 lm	3CCT (3,000/4,000/5,000 K)	Bronze	10-1/2" x 9-5/8" x 2-7/8"	-	
CAN07-MS WITH MOTION SENSOR									
ASD-CAN07-45DAC-MS-BZ	45W	120-277 V	1-10 V	6,230/6,916/6,900 lm	3CCT (3,000/4,000/5,000 K)	Bronze	10-1/2" x 9-5/8" x 3-3/8"	Motion Sensor	
UHB-RC-MSK1	Remote controller for motion sensor							6-7/8" x 2-1/4" x 1-1/16"	-
CAN07-EM WITH BATTERY BACK-UP									
ASD-CAN07-45DAC-15EM-BZ	45W	120-277 V	1-10 V	6,230/6,916/6,900 lm	3CCT (3,000/4,000/5,000 K)	Bronze	10-1/2" x 9-5/8" x 2-7/8"	15W Battery back-up	

PRODUCT SPECIFICATIONS:

Construction & Materials		Optical system	
Lens	PC	Luminous flux	ASD-CAN07-45DAC-BZ
Housing	Aluminum		ASD-CAN07-70DAC-BZ
Finish	Bronze		ASD-CAN07-45DAC-MS-BZ
			ASD-CAN07-45DAC-15EM-BZ
Weight	ASD-CAN07-45DAC-BZ	4.9 lb (2.2 kg)	6,230/6,916/6,900 lm
	ASD-CAN07-70DAC-BZ	5.1 lb (2.3 kg)	8,381/9,331/8,945 lm
	ASD-CAN07-45DAC-MS-BZ		6,230/6,916/6,900 lm
	ASD-CAN07-45DAC-15EM-BZ	6 lb (2.7 kg)	
Environmental system		Dimming compatible controls *	
Work environment	Suitable for Wet Locations, IP65	Brand	Leviton
Operating temperature	-40°F to 122°F (-40°C to 50°C)	Models	IP710-LFZ
L-70 Life	R > 46,000 hrs; C > 150,000 hrs		
			DVSTV
			NTSTV

For most up-to-date spec sheets please refer to asd-lighting.com

ASD LIGHTING CORP

E-mail: orders@asd-lighting.com | Web site: www.asd-lighting.com





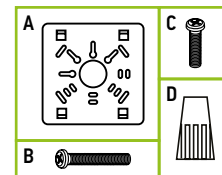
LED LOW-PROFILE CANOPY

Electrical system		
Input voltage	120-277 V	
Max input current	ASD-CAN07-45DAC-BZ	0.5 A
	ASD-CAN07-70DAC-BZ	0.8 A
	ASD-CAN07-45DAC-MS-BZ	0.5 A
	ASD-CAN07-45DAC-15EM-BZ	
Inrush current (Action time)	80 A (0.75 S)	
AC input range	min 108 V max 305 V	
Off state power	0W	
Power consumption	ASD-CAN07-45DAC-BZ	45W
	ASD-CAN07-70DAC-BZ	70W
	ASD-CAN07-45DAC-MS-BZ	45W
	ASD-CAN07-45DAC-15EM-BZ	
Power factor	> 0.9	
Output voltage	110-130 V	
Max output current	ASD-CAN07-45DAC-BZ	350 mA
	ASD-CAN07-70DAC-BZ	550 mA
	ASD-CAN07-45DAC-MS-BZ	350 mA
	ASD-CAN07-45DAC-15EM-BZ	
Surge protection	4 kV	
LED driver class	Non-Isolated Class P	
Regular and voluntary certifications		
5-year limited warranty		
DesignLights Consortium (DLC) listed (Classification: Premium)		
UL certified E473804		

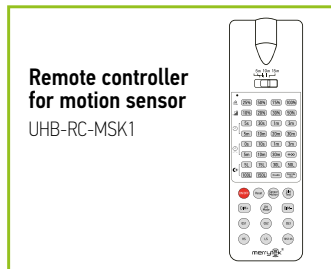
* The list of dimmers is relevant for models without a motion sensor.

PACKAGE CONTENTS:

Description	Q-ty
LED Low-Profile Canopy	1
Mounting plate (A)	1
Screw M4*40 (C)	2
Screw M4*20 (B)	2
Wire nut (D)	3
Box	1



ACCESSORIES (SOLD SEPARATELY):



ACCESSORY COMPATIBILITY LIST:

Accessories	Remote controller for motion sensor UHB-RC-MSK1
Models	
ASD-CAN07-45DAC-BZ	
ASD-CAN07-70DAC-BZ	
ASD-CAN07-45DAC-MS-BZ	•
ASD-CAN07-45DAC-15EM-BZ	

BUILT-IN MOTION SENSOR INFORMATION



CAN07-MS series

+



remote controller
UHB-RC-MSK1
(sold separately)

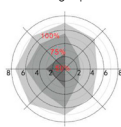
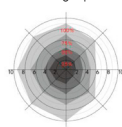
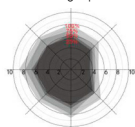
- ▶ Sensor parameters can be conveniently set via remote control (sold separately)
- ▶ Mounting height up to 49.2ft (15m) max., suitable for warehouse use
- ▶ Built-in adjustable daylight sensor

Coverage area for ceiling mounting:

Height: 3 m Sensitivity: 100%/75%/50%/25% Normal moving (speed 1 m/s)

Height: 12 m Sensitivity: 100%/75%/50%/25% Normal moving (speed 1 m/s)

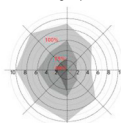
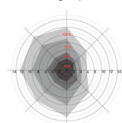
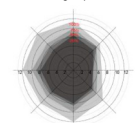
Height: 15 m* Sensitivity: 100%/75%/50%/25% Normal moving (speed 1 m/s)



Height: 3 m Sensitivity: 100%/75%/50%/25% Normal moving (speed 0.3 m/s)

Height: 12 m Sensitivity: 100%/75%/50%/25% Normal moving (speed 0.3 m/s)

Height: 15 m Sensitivity: 100%/75%/50%/25% Normal moving (speed 0.3 m/s)



* Only 100%/75%/50% detection sensitivity is workable when installed at 15 m mounting height 25% sensitivity is not able to detect motion signal.

Specifications	Model: MCD79D RC2B
Operating voltage	12 Vdc ± 1 V
Operating current	25 mA
Working mode	0-10 V DC
Detection area	25 %/50 %/75 %/100 %
Hold time	5 s/1 min/3 min/5 min/10 min/20 min/30 min
Daylight threshold	5 Lx (0.5 Fc)/15 Lx (1.4 Fc)/30 Lx (2.8 Fc)/50 Lx (4.7 Fc)/100 Lx (9.3 Fc)/150 Lx (14 Fc)/Disable
Standby period	0 s/10 s/1 min/3 min/5 min/10 min/30 min/+ ∞
Standby dimming level	10%/20%/30%/50%
Operating frequency	5.8 GHz ± 75 MHz, ISM band.
Transmitting power	1mW max
Stand-by power	< 0.3 mW
Mounting height	Max.15 m/49.2 ft
Detection range	Max.12 m/39.37 ft

DEFAULT SETTING:

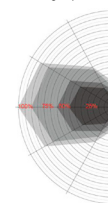
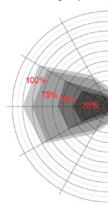
Detection area	Hold time	Daylight sensor	Stand-by period	Stand-by dim level	Sensitivity
100 %	20 min	Disable	0 s	10 %	Low (LS)

⚠ RF interference may affect the operation of this sensor.

Coverage area for wall mounting:

Height: 2 m Sensitivity: 100%/75%/50%/25% Normal moving (speed 1 m/s)

Height: 2 m Sensitivity: 100%/75%/50%/25% Slow moving (speed 0.3 m/s)

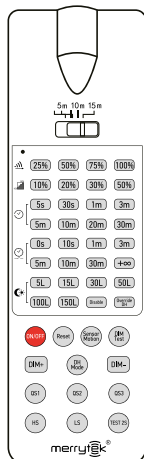





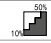


For most up-to-date spec sheets please refer to asd-lighting.com



LED LOW-PROFILE CANOPY

REMOTE CONTROL UHB-RC-MSK1 sold separately:



Button	Remarks
ON/OFF	Press the "ON/OFF" button: the fixture will switch to the constant on/off mode. Use ON/OFF button to on and off the fixture. Press any another button to switch back to the motion sensor mode.
Reset	Press "Reset" button: all parameters are the same as the DIP switch or factory settings.
Sensor motion	Press "Sensor motion" button, the light quits from the constant on/off mode, and the sensor starts to work (The latest setting stays in validity).
Dim test	Press "Dim test" button: the 0-10 V dimming works to test whether the 0-10 V dc dimming parts are connected properly. After 2 s, it returns to the latest setting automatically.
Override DH	Hold for 3 s: daylight priority mode will be switched to daylight threshold mode with the preset daylight value.
DIM + DIM -	Set occupancy light level in range of 50 %-100 %. Dim level changes by 2 % each time Dim +/Dim - is pressed.
DH Mode	Hold for 3 s: sensor will be switched to daylight priority mode, if the preset daylight value is set to "Disable" the sensor will stay in daylight threshold mode.
Escena opcion	Detection area Hold time Standby period Standby dim level Daylight sensor Induction model
QS1	100 % 5 min 10 min 10 % 30 Lx (2.8 Fc) HS
QS2	100 % 10 min 30 min 10 % Disable HS
QS3	100 % 20 min 30 min 10 % Disable HS
Test 2 s	Press the "Test 2 s" button at any time to enter test mode. In this mode the sensor parameters are as follows: Detection area is 100 %, Hold time is 5 s, Standby dim level is 10 %, Standby period is 0 s, daylight sensor is disabled. This function is only for testing. Press "Reset" or any other function button to exit this mode.
HS LS	Press the "HS" button for high sensitivity in the detection area. Press the "LS" button for low sensitivity in the detection area. The adjustment is based on the "Detection area" parameter you set.
 Daylight sensor	Set up daylight threshold: 5 Lx (0.5 Fc)/15 Lx (1.4 Fc)/30 Lx (2.8 Fc)/50 Lx (4.7 Fc)/100 Lx (9.3 Fc)/150 Lx (14 Fc)/Disable
 Standby period	Set up standby time: 0 s/10 s/1 min/3 min/5 min/10 min/30 min/+ ∞
 Hold time	Set up hold-time: 5 s/30 s/1 min/3 min/5 min/10 min/20 min/30 min
 Standby dim level	Set up standby dim level: 10 %/20 %/30 %/50 %
 Detection area	Set up detection area: 25 %/50 %/75 %/100 %
 Remote distance	Toggle the button to set the remote distance of remote control and sensor.

Remote control and code setting conversion:

1. DIP switch settings convert to remote control: Press any button except "Reset" on the remote control, and the sensor settings convert to the function currently selected by the remote control. (No function button settings invalid).

2. Remote control convert to DIP switch settings:

a. Press the "Reset" button on the remote control, and all settings return to the DIP switch settings of the sensor.

b. Turn off the power, toggle any DIP switch, connect to the power, and all settings return to the DIP switch settings when power is supplied again.

To manually set your fixture use the top set of buttons on your wireless remote control. There are 5 sets of parameters to set.

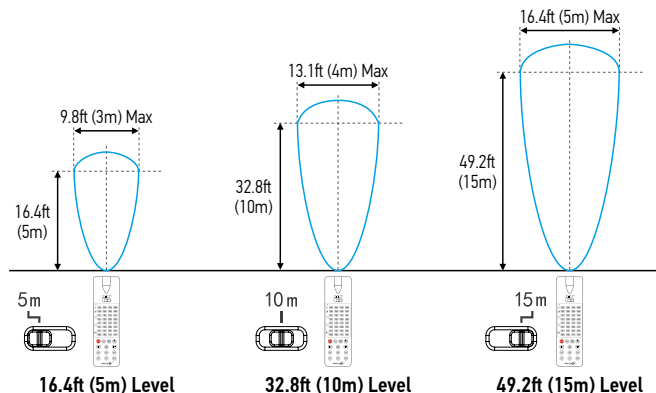
Detection area – sensitivity of motion sensor in percent.

Hold time – time the fixture will remain at full brightness after no motion is detected.

Stand by time – time fixture will remain on at a reduced brightness.

Stand by dim level – light output level after hold time expires and stand by time starts.

Daylight threshold – fixture can be set to adjust light output based on ambient light levels in the area.



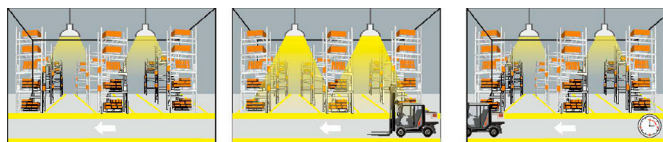
For most up-to-date spec sheets please refer to asd-lighting.com



LED LOW-PROFILE CANOPY

2-STEP DIMMING FUNCTION (STAND BY PERIOD BE SET TO "+ ∞")

1. If there is no motion detected, the light will be remained at a low light level all the time.
2. When motion is detected, the sensor will switch on the light to 100% brightness.
3. After elapse of hold time, the sensor dims the light at the present low light level if no motion is detected.



3-STEP DIMMING FUNCTION (STAND BY PERIOD BE SET TO "10 S/1 MIN/3 MIN/5 MIN/10 MIN/30 MIN")

1. With sufficient ambient light, the light will not be switched on even it with motion signal.
2. With insufficient ambient light, the sensor switched on the light when motion is detected.
3. After elapse of hold time, the sensor dims the light at a low light level if no new motion is detected.
4. After elapse of stand by period, the sensor switches off the light if no motion is detected in the detection zone.

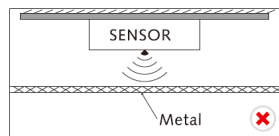


DAYLIGHT PRIORITY (STAND BY PERIOD SET TO "+ ∞")

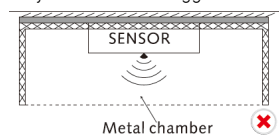
1. Lamp turns on at low light level 10% in the night.
2. Motion detected, lamp automatically lights up to 100%.
3. After hold time, the lamp gradually dims to a low light level 10% if no movement detected.
4. Lamp turns off after dawn.



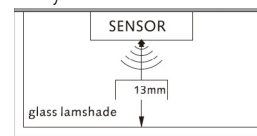
To avoid blocking the microwave emission, the microwave sensor can not be covered with metal materials, be sprayed coating of metal components, or be attached metal material and stickers etc.



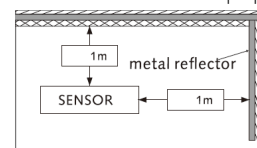
Avoid placing the sensor inside the metal chamber, otherwise may cause the mistrigger.



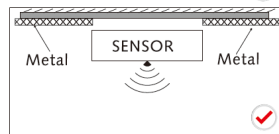
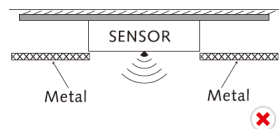
The distance between the antenna and the glass (dielectric material) should be no less than 13mm when the sensor is built in the glass lampshade. Otherwise, the microwave motion sensor will not penetrate the glass easily.



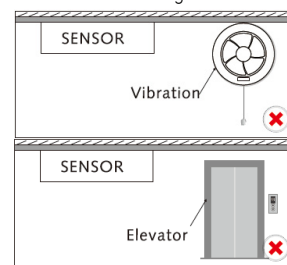
The sensor should not be placed in a small confined space. To avoid increasing the sensor detection range or abnormal operation, the sensor should keep away from large areas of metal and glass reflectors (separation distance at least 1m). Pls reduce the detection area setting to use or contact Merrytek to confirm the situation, once the sensor works improperly.



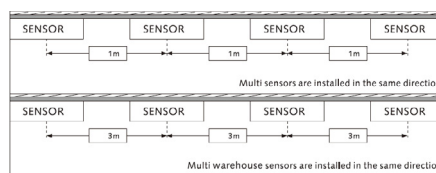
To avoid affecting the microwave signal transmission, surrounding metal surface.



Any vibration or movement signal may trigger the sensor. Ensure the sensor is far from such the signal.



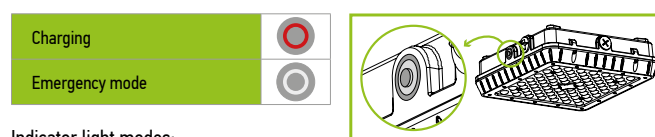
When multiple sensors are installed side-by-side in the same direction, the distance between each other should be kept at least 1m (the warehouse sensors at least 3m) to avoid mutual interference.



BUILT-IN BATTERY BACK-UP INFORMATION

Specifications	Model: BLD-CM20H-1500400
Input voltage	100-277 V 50/60 Hz
Max emergency output power	15W
Warranty	5 Years
Indicator light	Illuminated test switch, indicator light
Battery	Li-ion - 11.1 V / 4000 mAh
Lumens	2,194 lm
Emergency operation time	≥ 90 minutes
Battery charging current	250 mA
Emergency current	170 mA
Charging time	≥ 24 Hours
Full charge/discharge cycles	500 cycles

STANDARD OPERATION DISPLAY STATUS:



Indicator light modes:

- Red light ON - the battery back-up is charging in standby mode;
- Red light OFF - AC power is out, the battery back-up is working in emergency mode.

Test button operation: Press the test button to switch the system to back-up mode. The Red light will turn off, and the fixture will decrease in light amount. Release test button to go back to the normal mode.

For most up-to-date spec sheets please refer to asd-lighting.com



LED LOW-PROFILE CANOPY

INSTALLATION GUIDE

IMPORTANT SAFETY INFORMATION:

Please read all the instructions below before installation.

- ▶ Make sure that the supply voltage corresponds to the rated product voltage.
- ▶ The product must be installed by a qualified electrician in accordance with the National Electrical Code and corresponding local codes.
- ▶ If the product is damaged, do not use it.

⚠ WARNING

RISK OF PERSONAL INJURY – READ and follow all WARNINGS and installation instructions. Keep or give to the owner for future reference.

Risk of cuts: Wear gloves to prevent cuts or abrasions when removing from carton, handling, installing, and maintaining this product.

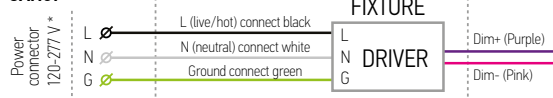
Risk of electric shock: This product must be installed in accordance with the applicable installation code by a person familiar with the construction and operation of the product and the hazards involved.

Risk of Fire: Minimum 194°F supply conductors. Consult a qualified electrician to ensure correct branch circuit conductor.

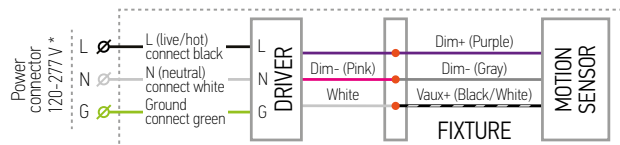
ASD® assumes no responsibility for claims arising out of improper or careless installation or handling of this product.

ELECTRICAL SCHEMATIC DIAGRAM:

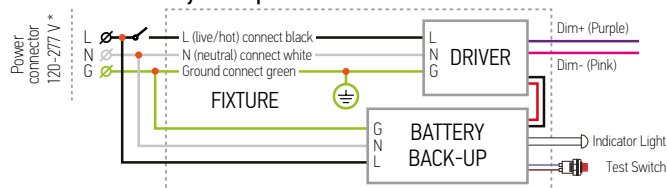
CAN07



CAN07-MS with motion sensor



CAN07-EM with battery back-up

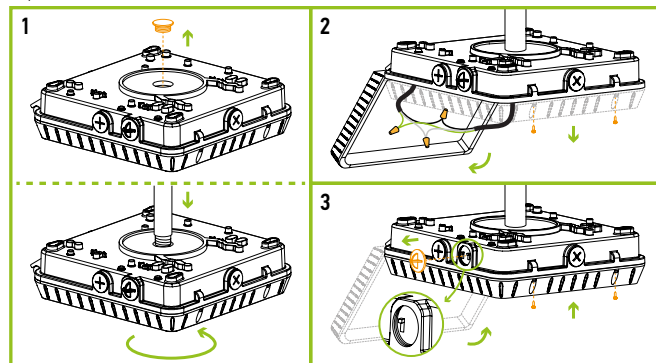


* The regular voltage 120-277V fixtures can be alternatively powered without neutral by two-phase circuit with phase-to-phase voltage of 208V (L1-120V & L2-120V).

WARNING: Phase-to-phase voltage should be less than 277V (160V per each phase) and more than 120V (70V per each phase)! Do not confuse Regular Voltage fixtures of 120-277V with High Voltage ones of 277-480V!

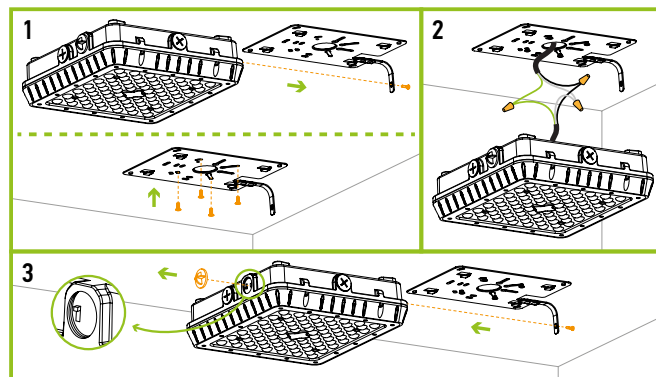
POLE MOUNTING INSTALLATION:

1. Remove the rubber cap, pass the AC wires from conduit through the hole into inside the fixture and screw the fixture to the G1/2" threaded conduit
2. Open the fixture by unscrewing two screws. Connect the wires: Black to Black, White to White, Green to Green.
3. Close the fixture, adjust color temperature (if needed) by unscrewing one big cap on the side of the fixture.



SURFACE MOUNT WITH A MOUNTING PLATE:

1. Remove the securing screw out of the mounting plate, detach the mounting plate from the fixture housing and secure the plate to a j-box on the ceiling.
2. Connect the wires: Black to Black, White to White, Green to Green and secure connection to the Junction box in the ceiling.
3. Slide the fixture into the mounting plate clamps and secure it with a screw. Adjust color temperature (if needed) by unscrewing one big cap on the side of the fixture.



ORDERING INFORMATION

Model	UPC	Pcs. per carton	Carton size	Carton weight	GTIN 14
ASD-CAN07-45DAC-BZ	810050736237	6	22.4" x 12.8" x 12.8"	33.5 lb	10810050736234
ASD-CAN07-70DAC-BZ	810050736251	6	22.4" x 12.8" x 12.8"	34.8 lb	10810050736258
CAN07-MS WITH MOTION SENSOR					
ASD-CAN07-45DAC-MS-BZ	810050736244	6	22.4" x 12.8" x 12.8"	34.8 lb	10810050736241
UHB-RC-MSK1	819201022007	100	14.6" x 12.8" x 12.2"	11.3 lb	10819201022004
CAN07-EM WITH BATTERY BACK-UP					
ASD-CAN07-45DAC-15EM-BZ	810050736268	6	22.4" x 12.8" x 12.8"	40.1 lb	10810050736265

For most up-to-date spec sheets please refer to asd-lighting.com

ASD LIGHTING CORP

E-mail: orders@asd-lighting.com | Web site: www.asd-lighting.com

