



LED EXTRUDING VAPOR PROOF

ASD Lighting Corp has been a leader in Vapor tight fixtures and is now offering a Vapor proof fixture with a built in emergency back up. The EMB is wired from the factory and provides 120 minutes of emergency power in the case of power failure. These are great fixtures for any application where safety is paramount and a well protected fixture is required. They also come with a corded lead for easy installation.

Catalog number	
Notes	
Type	

FEATURES AND BENEFITS:

- ▶ Contemporary design
- ▶ Polycarbonate body
- ▶ 2 foot cord
- ▶ 5000K available
- ▶ Low energy consumption
- ▶ Suitable for Wet Locations
- ▶ Surface mounted luminaire
- ▶ cETLus certified
- ▶ LED lifetime R > 50,000 hrs, C > 206,000 hrs
- ▶ 5-year limited warranty



PRODUCT LEGEND:

Family	Modification	Lens	Size	Dimmable	Watts	CCT		Series
ASD-LVP	3S	M	4	N	38	50		PRM
LED Extruding Vapor Proof		Milky lens	4 ft	Non-Dimmable	38 W	5,000 K	XX Blank = option EM = Battery back up	Standard

LED EXTRUDING VAPOR PROOF FIXTURE:

Model	Type	Watts	Voltage	Dimming	CCT	Lumens	Dimensions (LxWxH)	DLC
ASD-LVP3SM-4N3850PRM	4 ft	38 W	120-277 V	No	5,000 K	5,000 lm	49 1/4" x 2 1/2" x 3 1/2"	Standard
ASD-LVP3SM-4N3850-EM-PRM	4 ft	38 W	120-277 V	No	5,000 K	5,000 lm	49 1/4" x 2 1/2" x 3 1/2"	Standard

ORDERING INFORMATION:

Model	UPC	Pcs. per Carton	Carton Size	Carton Weight	GTIN 14
ASD-LVP3SM-4N3850PRM	819201026364	8	52 x 13" x 8.7"	42 lb	10819201026361
ASD-LVP3SM-4N3850-EM-PRM	819201026371	8	52 x 13" x 8.7"	60 lb	10819201026378

For most up-to-date spec sheets please refer to asd-lighting.com






LED EXTRUDING VAPOR PROOF

PRODUCT SPECIFICATIONS:

Construction & Materials			
Lens	Milky lens		
Housing	Polycarbonate white lens		
Finish Color	White		
Weight	ASD-LVP3SM-4N3850PRM	4.5 lb (2.1 kg)	
	ASD-LVP3SM-4N3850-EM-PRM	6.7 lb (3.1 kg)	
Environmental System			
Work Environment	Suitable for Wet Locations, IP65		
Operating Temperature	-40°F to 104°F (-40°C to 40°C)		
L-70 Life	R > 50,000 hrs, C > 206,000 hrs		
Optical System			
Luminous Flux	ASD-LVP3SM-4N3850PRM	5,000 lm	
	ASD-LVP3SM-4N3850-EM-PRM	5,000 lm	
Color Temperature	5,000 K		
CRI	> 80		
Electrical System			
Input Voltage	120-277 V		
Max input current	ASD-LVP3SM-4N3850PRM	0.4 A	
	ASD-LVP3SM-4N3850-EM-PRM	0.45 A	
Inrush current (Action time)	ASD-LVP3SM-4N3850PRM	50 A (0.5 S)	
	ASD-LVP3SM-4N3850-EM-PRM	100 A (0.5 S)	
AC input range	min 100 V max 277 V		
Off State Power	0 W		
Power Consumption	38 W		
Power Factor	≥ 0.9		
Output voltage	ASD-LVP3SM-4N3850PRM	72 V	
	ASD-LVP3SM-4N3850-EM-PRM	42 V	
Max output current	ASD-LVP3SM-4N3850PRM	250 mA	
	ASD-LVP3SM-4N3850-EM-PRM	900 mA	
LED driver class	Class 1		
Battery back-up information			
Battery charging time	24 hours		
Emergency operation time	≥ 120 minutes		
Emergency watts	12 W		
Emergency Luminous Flux	1,680 lm		
Regular and Voluntary Certifications			
5-year limited warranty			
cETLus certified			

PACKAGE CONTENTS:

Description	Q-ty	
LED Extruding Vapor Proof Fixture	1	
Mounting brackets (A)	2	
Screw for anchor (B)	4	
Plastic anchors (C)	4	 
Box	1	
Cut sheet	1	

EMERGENCY OPERATION MODE:

When the AC power cuts off, the emergency driver detects the outage and automatically switches to the emergency mode. Accordingly the Green LED will turn on until the Battery exhaustion the lumiares and indicator light will turn off.

AC Mode:

Green LED indicator light keep constant on when the system works properly, if there is any error. The green led will blink.

Automatic Self-Checking Test Mode:

▶ After being powered, the emergency LED driver will automatically switch to emergency mode for 3s, if system works properly then it will switch to AC mode, Green LED will be constant on.

▶ If the green LED blinks, after 2 hours, it will switch to Automatic Self-detecting mode, automatically switch to emergency 30s and back to AC operation mode.

▶ The emergency driver will detect itself for 3 seconds monthly. If detection is good, then it will turn to AC mode.

Note: the monthly Self-detection mode will start 10mins after the lumiares turned off.

INSTALLATION GUIDE

IMPORTANT SAFETY INFORMATION:

Please read all the instructions below before installation.

- ▶ Make sure that the supply voltage corresponds to the rated product voltage.
- ▶ The product must be installed by a qualified electrician in accordance with the National Electrical Code and corresponding local codes.
- ▶ If the product is damaged, do not use it.

⚠ WARNING

RISK OF PERSONAL INJURY – READ and follow all WARNINGS and installation instructions.

Keep or give to the owner for future reference.

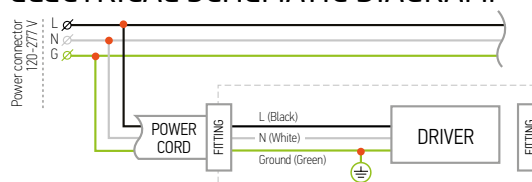
Risk of cuts: Wear gloves to prevent cuts or abrasions when removing from carton, handling, installing, and maintaining this product.

Risk of electric shock: This product must be installed in accordance with the applicable installation code by a person familiar with the construction and operation of the product and the hazards involved.

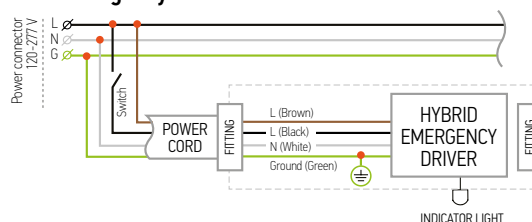
Risk of Fire: Minimum 194°F supply conductors. Consult a qualified electrician to ensure correct branch circuit conductor.

ASD® assumes no responsibility for claims arising out of improper or careless installation or handling of this product.

ELECTRICAL SCHEMATIC DIAGRAM:

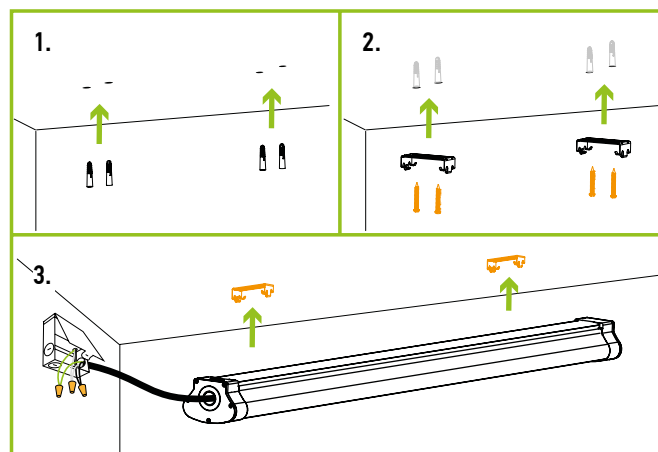


with emergency



SURFACE MOUNT:

1. Make holes on the wall/ceiling surface. Place plastic anchors inside.
2. Affix the mounting brackets to the ceiling/wall.
3. Connect the wires: Black to Black, White to White, Green to Green and affix the fixture by the mounting brackets to the mounting surface.



For most up-to-date spec sheets please refer to asd-lighting.com