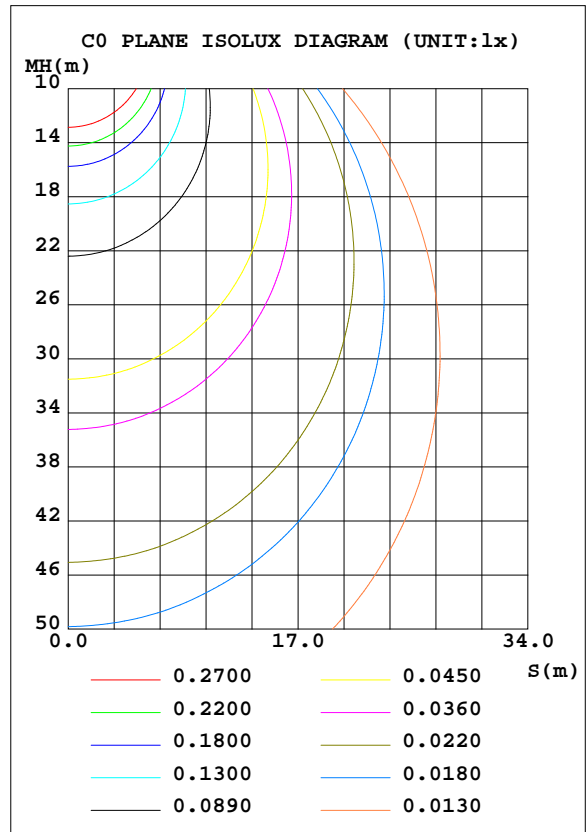
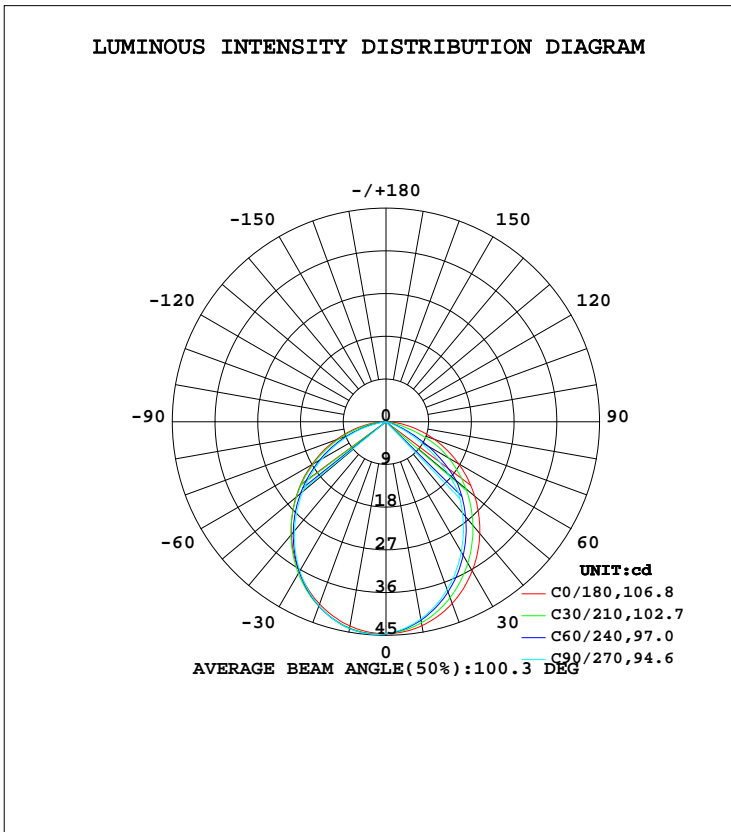


LUMINAIRE PHOTOMETRIC TEST REPORT

Test:U:12.0V I:0.2275A P:2.73W PF:1.0000 Freq:0Hz Lamp Flux:106.547x1 lm		
NAME:	TYPE:LED	WEIGHT:
SPEC.:ASD-HSLS7-5SM-RGB-BR_5000K	DIM.:	SERIAL No.:
MFR.: ASD Lighting Corp	SUR.:	Shielding Angle:

DATA OF LAMP		PHOTOMETRIC DATA Eff: 39.03 lm/W			
MODEL	ASD-HSLS7-5SM-RGB-BR	I _{max} (cd)	44.86	S/MH(C0/180)	1.22
NOMINAL POWER(W)		LOR(%)	100.0	S/MH(C90/270)	1.21
RATED VOLTAGE(V)	12	TOTAL FLUX(lm)	106.55	η UP, DN(C0-180)	0.0,45.7
NOMINAL FLUX(lm)	106.547	CIE CLASS	DIRECT	η UP, DN(C180-360)	0.1,54.2
LAMPS INSIDE	1	η up(%)	0.1	CIBSE SHR NOM	1.25
TEST VOLTAGE(V)	12	η down(%)	99.9	CIBSE SHR MAX	1.35



C Range: 0 - 360DEG
 C Interval: 15.0DEG
 Test Speed: HIGH
 Temperature: 24.9DEG
 Operators: Alan Wang
 Test Date: 12 January 2024

γ Range: 0 - 180DEG
 γ Interval: 1.0DEG
 Test System: EVERFINE GO-R5000_V2 SYSTEM V2.00.416
 Humidity: 41.1%
 Test Distance: 2.500m [K=1.0423]
 Remarks:

ZONAL FLUX DIAGRAM

ZONAL FLUX DIAGRAM:

γ	C0	C45	C90	C135	C180	C225	C270	C315	γ	Φ zone	Φ total	%lum, lamp
10	43.63	42.67	42.21	42.70	43.71	44.14	44.26	44.14	0- 10	4.203	4.203	3.95,3.95
20	40.75	38.74	37.65	38.77	40.89	41.35	41.25	41.33	10- 20	11.83	16.04	15,15
30	36.31	33.41	31.72	33.46	36.53	36.74	36.32	36.72	20- 30	17.39	33.43	31.4,31.4
40	30.74	27.20	25.09	27.29	31.01	30.81	29.99	30.82	30- 40	20.14	53.57	50.3,50.3
50	24.41	20.57	17.13	20.68	24.75	24.08	22.92	24.08	40- 50	19.90	73.47	69,69
60	17.64	12.78	7.963	12.96	18.01	16.87	15.46	16.88	50- 60	16.60	90.08	84.5,84.5
70	10.82	4.337	1.441	4.465	11.21	9.607	7.990	9.628	60- 70	10.94	101.0	94.8,94.8
80	4.476	0.0469	0.0007	0.0490	4.892	2.701	1.428	2.751	70- 80	4.756	105.8	99.3,99.3
90	0.0037	0.0030	0.0017	0.0026	0.0066	0.0489	0.0535	0.0471	80- 90	0.6771	106.5	99.9,99.9
100	0.0046	0.0050	0.0043	0.0049	0.0106	0.0073	0.0043	0.0073	90-100	0.0083	106.5	99.9,99.9
110	0.0079	0.0069	0.0069	0.0073	0.0122	0.0099	0.0069	0.0102	100-110	0.0077	106.5	99.9,99.9
120	0.0122	0.0106	0.0099	0.0106	0.0142	0.0116	0.0099	0.0119	110-120	0.0096	106.5	99.9,99.9
130	0.0162	0.0145	0.0155	0.0159	0.0198	0.0179	0.0162	0.0165	120-130	0.0123	106.5	99.9,99.9
140	0.0198	0.0201	0.0198	0.0198	0.0258	0.0251	0.0235	0.0235	130-140	0.0150	106.5	100,100
150	0.0225	0.0231	0.0238	0.0231	0.0321	0.0337	0.0324	0.0324	140-150	0.0157	106.5	100,100
160	0.0278	0.0274	0.0261	0.0280	0.0383	0.0393	0.0363	0.0360	150-160	0.0141	106.5	100,100
170	0.0314	0.0317	0.0291	0.0297	0.0380	0.0390	0.0360	0.0350	160-170	0.0095	106.5	100,100
180	0.0347	0.0347	0.0337	0.0337	0.0354	0.0367	0.0337	0.0341	170-180	0.0033	106.5	100,100
DEG	LUMINOUS INTENSITY:cd									UNIT:lm		

Conical surface Flux(90deg): 63.739 lm

%lum = 59.8%

%lamp = 59.8%

Conical surface Flux(120deg): 90.075 lm

%lum = 84.5%

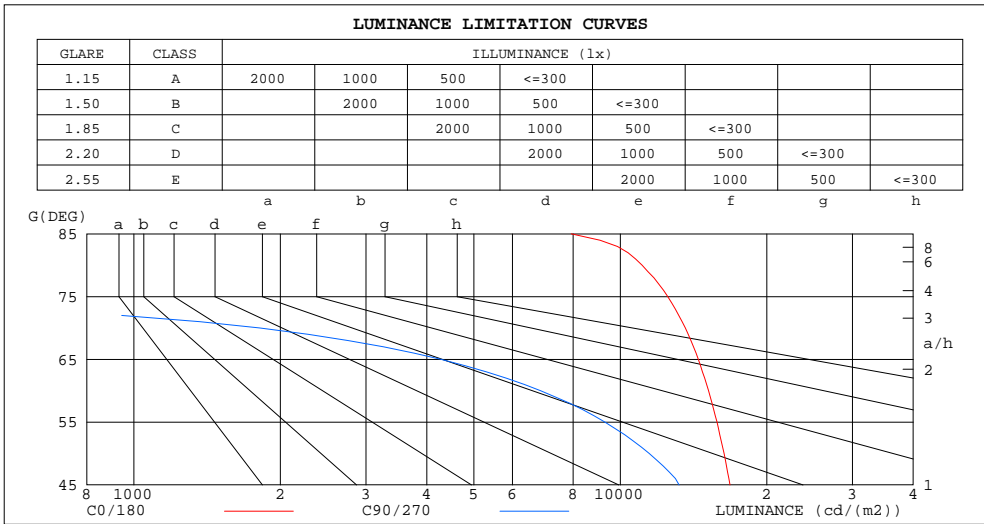
%lamp = 84.5%

C Range: 0 - 360DEG
 C Interval: 15.0DEG
 Test Speed: HIGH
 Temperature: 24.9DEG
 Operators: Alan Wang
 Test Date: 12 January 2024

γ Range: 0 - 180DEG
 γ Interval: 1.0DEG
 Test System: EVERFINE GO-R5000_V2 SYSTEM V2.00.416
 Humidity: 41.1%
 Test Distance: 2.500m [K=1.0423]
 Remarks:

LUMINANCE LIMITATION CURVES

Test:U:12.0V I:0.2275A P:2.73W PF:1.0000 Freq:0Hz Lamp Flux:106.547x1 lm		
NAME:	TYPE:LED	WEIGHT:
SPEC.:ASD-HSLS7-5SM-RGB-BR_5000K	DIM.:	SERIAL No.:
MFR.: ASD Lighting Corp	SUR.:	Shielding Angle:



LUMINANCE cd/(m2)		
G(DEG)	C0/180	C90/270
85	7926	8
80	11087	2
75	12517	144
70	13605	1812
65	14462	4279
60	15178	6850
55	15800	9296
50	16335	11465
45	16810	13203

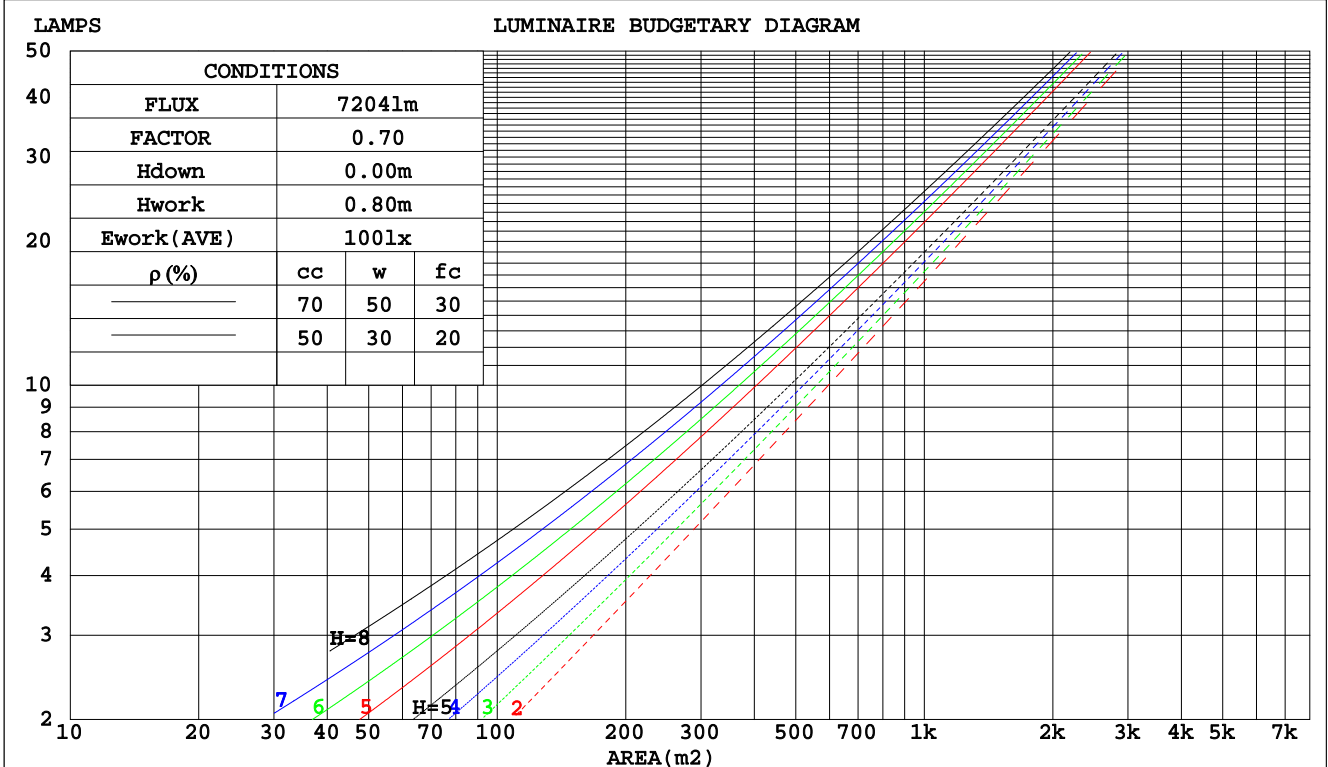
C Range: 0 - 360DEG
 C Interval: 15.0DEG
 Test Speed: HIGH
 Temperature: 24.9DEG
 Operators: Alan Wang
 Test Date: 12 January 2024

γ Range: 0 - 180DEG
 γ Interval: 1.0DEG
 Test System: EVERFINE GO-R5000_V2 SYSTEM V2.00.416
 Humidity: 41.1%
 Test Distance: 2.500m [K=1.0423]
 Remarks:

CU AND LUMINAIRE BUDGETARY ESTIMATE DIAGRAM

Test:U:12.0V I:0.2275A P:2.73W PF:1.0000 Freq:0Hz Lamp Flux:106.547x1 lm		
NAME:	TYPE:LED	WEIGHT:
SPEC.:ASD-HSL7-5SM-RGB-BR_5000K	DIM.:	SERIAL No.:
MFR.: ASD Lighting Corp	SUR.:	Shielding Angle:

pcc	80%			70%			50%			30%			10%			0
	50%	30%	10%	50%	30%	10%	50%	30%	10%	50%	30%	10%	50%	30%	10%	0
pw																0
pfc	20%			20%			20%			20%			20%			0
RCR	RCR:Room Cavity Ratio Coefficients of Utilization(CU)															
0.0	1.19	1.19	1.19	1.16	1.16	1.16	1.11	1.11	1.11	1.06	1.06	1.06	1.02	1.02	1.02	.00
1.0	1.06	1.02	.98	1.03	.00	.97	.99	.96	.94	.95	.93	.91	.92	.90	.88	.86
2.0	.93	.87	.81	.91	.85	.81	.88	.83	.79	.84	.80	.77	.81	.78	.75	.73
3.0	.82	.75	.69	.81	.74	.68	.78	.72	.67	.75	.70	.66	.73	.68	.65	.62
4.0	.73	.65	.59	.72	.64	.58	.70	.63	.58	.67	.61	.57	.65	.60	.56	.54
5.0	.66	.57	.51	.65	.57	.51	.63	.56	.50	.61	.55	.50	.59	.53	.49	.47
6.0	.60	.51	.45	.59	.51	.45	.57	.50	.44	.55	.49	.44	.54	.48	.43	.41
7.0	.54	.46	.40	.53	.45	.40	.52	.45	.39	.50	.44	.39	.49	.43	.39	.37
8.0	.50	.41	.36	.49	.41	.36	.48	.40	.35	.46	.40	.35	.45	.39	.35	.33
9.0	.46	.38	.32	.45	.37	.32	.44	.37	.32	.43	.36	.32	.42	.36	.32	.30
10.0	.42	.34	.29	.42	.34	.29	.41	.34	.29	.40	.33	.29	.39	.33	.29	.27



C Range: 0 - 360DEG
 C Interval: 15.0DEG
 Test Speed: HIGH
 Temperature: 24.9DEG
 Operators: Alan Wang
 Test Date: 12 January 2024

γ Range: 0 - 180DEG
 γ Interval: 1.0DEG
 Test System: EVERFINE GO-R5000_V2 SYSTEM V2.00.416
 Humidity: 41.1%
 Test Distance: 2.500m [K=1.0423]
 Remarks:

WEC AND CCEC

Test:U:12.0V I:0.2275A P:2.73W PF:1.0000 Freq:0Hz Lamp Flux:106.547x1 lm		
NAME:	TYPE:LED	WEIGHT:
SPEC.:ASD-HSLS7-5SM-RGB-BR_5000K	DIM.:	SERIAL No.:
MFR.: ASD Lighting Corp	SUR.:	Shielding Angle:

ρcc	80%			70%			50%			30%			10%			0
ρw	50%	30%	10%	50%	30%	10%	50%	30%	10%	50%	30%	10%	50%	30%	10%	0
ρfc	20%			20%			20%			20%			20%			0
RCR	RCR:Room Cavity Ratio						Wall Exitance Coefficients(WEC)									
0.0																
1.0	.276	.157	.050	.269	.154	.049	.256	.147	.047	.244	.141	.045	.233	.135	.044	
2.0	.267	.146	.045	.260	.143	.044	.249	.138	.043	.238	.134	.042	.229	.129	.041	
3.0	.251	.133	.040	.245	.131	.040	.235	.127	.039	.226	.124	.038	.217	.120	.037	
4.0	.234	.122	.036	.229	.120	.035	.220	.117	.035	.212	.114	.034	.204	.111	.034	
5.0	.218	.111	.032	.214	.110	.032	.206	.107	.032	.198	.105	.031	.192	.102	.031	
6.0	.204	.102	.029	.200	.101	.029	.193	.099	.029	.186	.097	.028	.180	.095	.028	
7.0	.191	.094	.027	.187	.093	.027	.181	.091	.026	.175	.090	.026	.169	.088	.026	
8.0	.179	.087	.025	.176	.087	.024	.170	.085	.024	.165	.083	.024	.160	.082	.024	
9.0	.168	.081	.023	.165	.081	.023	.160	.079	.022	.155	.078	.022	.151	.077	.022	
10.0	.159	.076	.021	.156	.075	.021	.151	.074	.021	.147	.073	.021	.143	.072	.021	

ρcc	80%			70%			50%			30%			10%			0
ρw	50%	30%	10%	50%	30%	10%	50%	30%	10%	50%	30%	10%	50%	30%	10%	0
ρfc	20%			20%			20%			20%			20%			0
RCR	RCR:Room Cavity Ratio						Ceiling Cavity Exitance Coefficients(CCEC)									
0.0	.191	.191	.191	.163	.163	.163	.112	.112	.112	.064	.064	.064	.020	.020	.020	
1.0	.179	.157	.138	.153	.135	.119	.105	.093	.082	.060	.054	.048	.019	.017	.015	
2.0	.170	.133	.102	.145	.114	.088	.100	.079	.061	.057	.046	.036	.018	.015	.012	
3.0	.161	.115	.078	.138	.099	.067	.095	.069	.047	.055	.040	.028	.018	.013	.009	
4.0	.154	.101	.061	.132	.088	.053	.091	.061	.037	.052	.036	.022	.017	.012	.007	
5.0	.147	.091	.050	.126	.079	.043	.087	.055	.031	.050	.032	.018	.016	.011	.006	
6.0	.140	.082	.041	.120	.071	.036	.083	.050	.025	.048	.029	.015	.015	.010	.005	
7.0	.133	.075	.035	.114	.065	.031	.079	.046	.022	.046	.027	.013	.015	.009	.004	
8.0	.127	.070	.030	.109	.060	.026	.076	.042	.019	.044	.025	.011	.014	.008	.004	
9.0	.121	.065	.027	.104	.056	.023	.072	.039	.016	.042	.023	.010	.014	.008	.003	
10.0	.115	.060	.024	.100	.052	.021	.069	.037	.015	.040	.022	.009	.013	.007	.003	

C Range: 0 - 360DEG
 C Interval: 15.0DEG
 Test Speed: HIGH
 Temperature: 24.9DEG
 Operators: Alan Wang
 Test Date: 12 January 2024

γ Range: 0 - 180DEG
 γ Interval: 1.0DEG
 Test System: EVERFINE GO-R5000_V2 SYSTEM V2.00.416
 Humidity: 41.1%
 Test Distance: 2.500m [K=1.0423]
 Remarks:

UGR(Unified Glare Rating) Table

Test:U:12.0V I:0.2275A P:2.73W PF:1.0000 Freq:0Hz Lamp Flux:106.547x1 lm										
NAME:					TYPE:LED			WEIGHT:		
SPEC.:ASD-HSLS7-5SM-RGB-BR_5000K					DIM.:			SERIAL No.:		
MFR.: ASD Lighting Corp					SUR.:			Shielding Angle:		
ceiling/cavity	0.7	0.7	0.5	0.5	0.3	0.7	0.7	0.5	0.5	0.3
walls	0.5	0.3	0.5	0.3	0.3	0.5	0.3	0.5	0.3	0.3
working plane	0.2	0.2	0.2	0.2	0.2	0.2	0.2	0.2	0.2	0.2
Room dimensions	Viewed crosswise					Viewed endwise				
x = 2H y = 2H	22.3	23.7	22.5	23.9	24.1	19.7	21.1	19.9	21.3	21.5
3H	23.7	25.1	24.0	25.3	25.5	19.7	21.0	20.0	21.3	21.5
4H	24.3	25.6	24.6	25.8	26.1	19.6	20.9	19.9	21.1	21.4
6H	24.7	25.9	25.0	26.2	26.4	19.5	20.7	19.8	20.9	21.2
8H	24.8	26.0	25.2	26.2	26.5	19.4	20.6	19.8	20.9	21.2
12H	24.9	26.0	25.2	26.2	26.5	19.4	20.5	19.7	20.8	21.1
4H 2H	22.5	23.7	22.8	24.0	24.2	20.3	21.5	20.6	21.8	22.0
3H	24.0	25.1	24.4	25.4	25.7	20.4	21.4	20.7	21.7	22.0
4H	24.7	25.7	25.1	26.0	26.3	20.3	21.3	20.6	21.6	21.9
6H	25.2	26.0	25.6	26.4	26.8	20.2	21.0	20.6	21.4	21.8
8H	25.3	26.1	25.7	26.5	26.9	20.1	20.9	20.5	21.3	21.7
12H	25.4	26.1	25.8	26.5	26.9	20.1	20.8	20.5	21.2	21.6
8H 4H	24.6	25.4	25.0	25.8	26.2	20.3	21.2	20.8	21.5	21.9
6H	25.1	25.8	25.5	26.2	26.6	20.3	20.9	20.7	21.3	21.8
8H	25.2	25.8	25.7	26.2	26.7	20.2	20.8	20.7	21.2	21.7
12H	25.3	25.8	25.8	26.2	26.7	20.2	20.7	20.7	21.1	21.6
12H 4H	24.5	25.3	25.0	25.7	26.1	20.3	21.1	20.7	21.4	21.8
6H	25.0	25.6	25.5	26.1	26.5	20.2	20.8	20.7	21.2	21.7
8H	25.2	25.7	25.7	26.1	26.6	20.2	20.7	20.7	21.1	21.6
Variations with the observer position at spacings:										
S = 1.0H	+ 0.2 / - 0.2					+ 0.7 / - 0.9				
1.5H	+ 0.1 / - 0.3					+ 0.4 / - 0.7				
2.0H	+ 0.4 / - 0.5					+ 1.0 / - 2.0				

CIE Pub.117, 106.5 lm Total Lamp Luminous Flux Corrected (8log(F/F0) = -7.8)
 Area: 0.002325 m2

C Range: 0 - 360DEG
 C Interval: 15.0DEG
 Test Speed: HIGH
 Temperature: 24.9DEG
 Operators: Alan Wang
 Test Date: 12 January 2024

γ Range: 0 - 180DEG
 γ Interval: 1.0DEG
 Test System: EVERFINE GO-R5000_V2 SYSTEM V2.00.416
 Humidity: 41.1%
 Test Distance: 2.500m [K=1.0423]
 Remarks:

UTILIZATION FACTORS TABLE

Test:U:12.0V I:0.2275A P:2.73W PF:1.0000 Freq:0Hz Lamp Flux:106.547x1 lm		
NAME:	TYPE:LED	WEIGHT:
SPEC.:ASD-HSLS7-5SM-RGB-BR_5000K	DIM.:	SERIAL No.:
MFR.: ASD Lighting Corp	SUR.:	Shielding Angle:

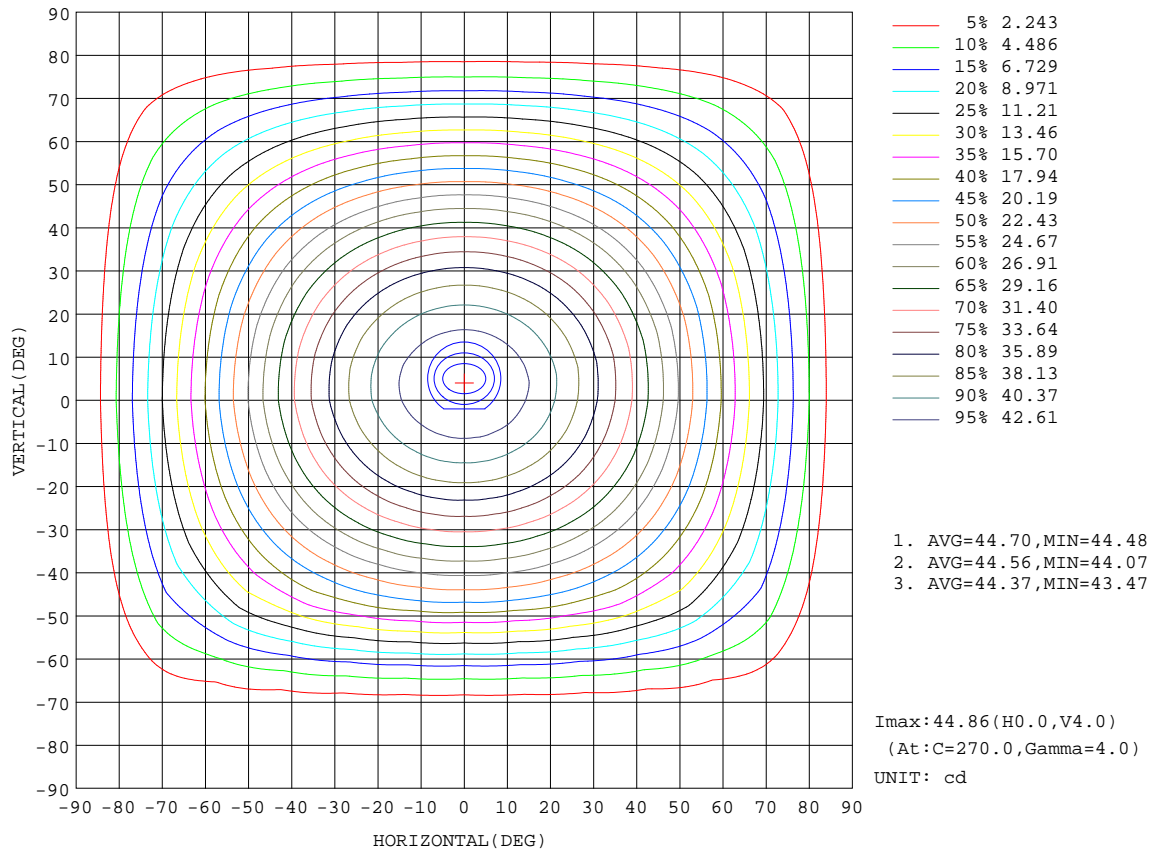
REFLECTANCE										
Ceiling	0.8	0.8	0.8	0.7	0.7	0.7	0.5	0.5	0.5	0
Walls	0.7	0.5	0.3	0.7	0.5	0.3	0.7	0.5	0.3	0
Working plane	0.2	0.2	0.2	0.2	0.2	0.2	0.2	0.2	0.2	0
ROOM INDEX	UTILIZATION FACTORS(PERCENT) $k(RI) \times RCR = 5$									
k = 0.60	61	49	43	60	49	43	59	49	43	36
0.80	71	60	53	70	59	53	68	59	52	46
1.00	79	69	62	78	68	62	76	70	61	55
1.25	86	77	70	85	76	70	82	74	69	62
1.50	91	82	76	89	81	75	87	79	74	67
2.00	97	90	84	96	89	83	92	86	82	74
2.50	101	94	89	99	93	88	95	90	86	78
3.00	104	98	93	102	96	92	98	94	90	82
4.00	108	103	99	105	101	97	101	98	94	86
5.00	110	106	102	108	104	100	103	100	97	89
ROOM INDEX	UF(total)									Direct
According to DIN EN 13032-2 2004			Suspended				SHRNOM = 1.25			

C Range: 0 - 360DEG
 C Interval: 15.0DEG
 Test Speed: HIGH
 Temperature: 24.9DEG
 Operators: Alan Wang
 Test Date: 12 January 2024

γ Range: 0 - 180DEG
 γ Interval: 1.0DEG
 Test System: EVERFINE GO-R5000_V2 SYSTEM V2.00.416
 Humidity: 41.1%
 Test Distance: 2.500m [K=1.0423]
 Remarks:

ISOCANDELA DIAGRAM

Test:U:12.0V I:0.2275A P:2.73W PF:1.0000 Freq:0Hz Lamp Flux:106.547x1 lm		
NAME:	TYPE:LED	WEIGHT:
SPEC.:ASD-HSLS7-5SM-RGB-BR_5000K	DIM.:	SERIAL No.:
MFR.: ASD Lighting Corp	SUR.:	Shielding Angle:

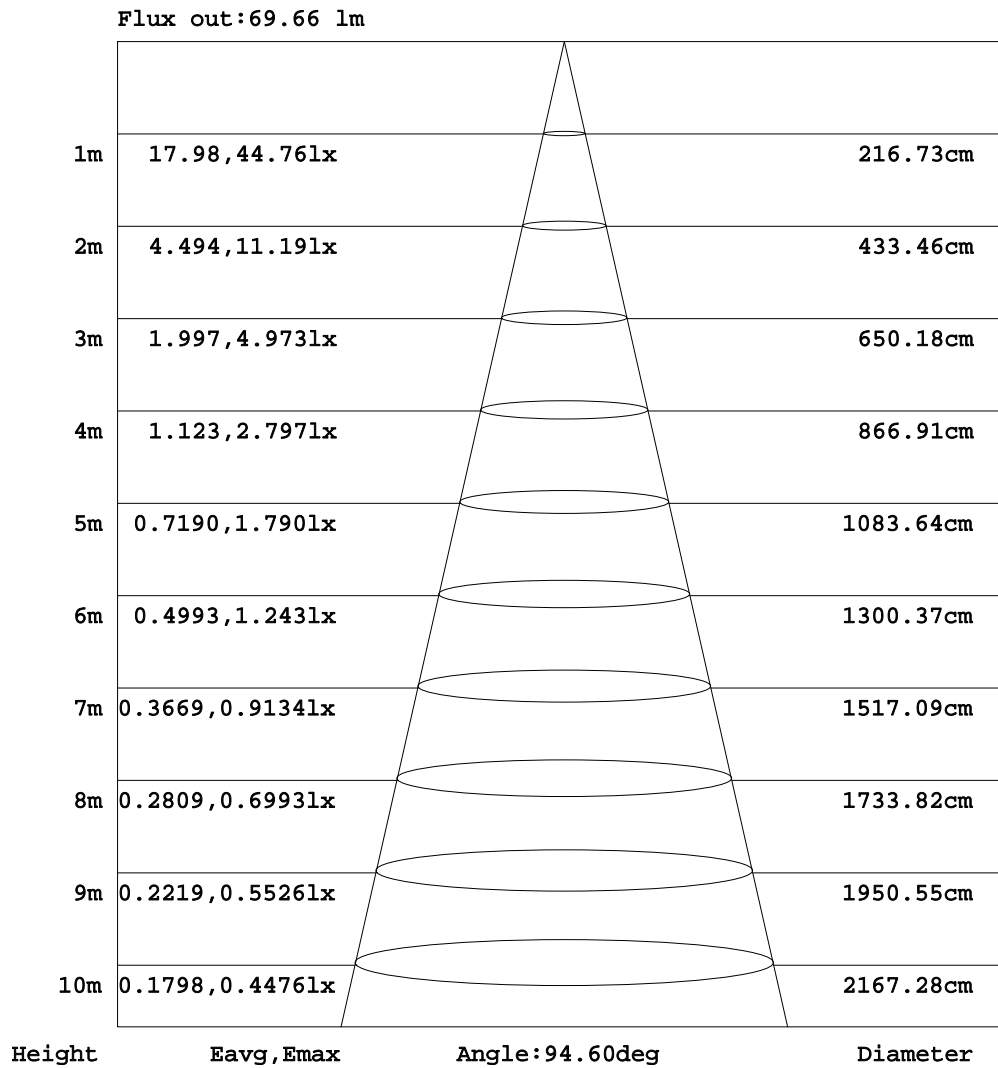


C Range: 0 - 360DEG
 C Interval: 15.0DEG
 Test Speed: HIGH
 Temperature: 24.9DEG
 Operators: Alan Wang
 Test Date: 12 January 2024

γ Range: 0 - 180DEG
 γ Interval: 1.0DEG
 Test System: EVERFINE GO-R5000_V2 SYSTEM V2.00.416
 Humidity: 41.1%
 Test Distance: 2.500m [K=1.0423]
 Remarks:

AAI Figure

Test:U:12.0V I:0.2275A P:2.73W PF:1.0000 Freq:0Hz Lamp Flux:106.547x1 lm		
NAME:	TYPE:LED	WEIGHT:
SPEC.:ASD-HSLS7-5SM-RGB-BR_5000K	DIM.:	SERIAL No.:
MFR.: ASD Lighting Corp	SUR.:	Shielding Angle:



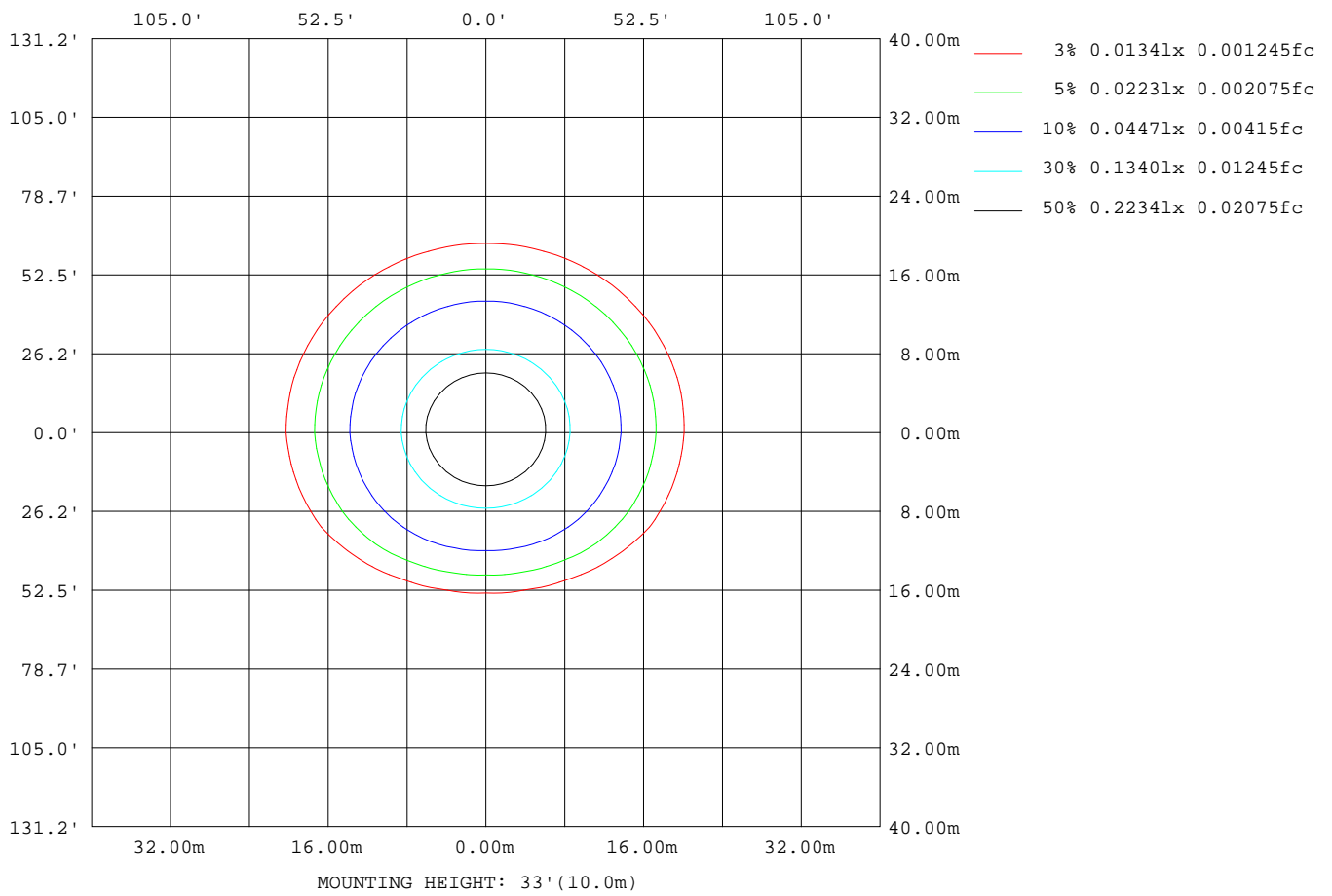
Note:The Curves indicate the illuminated area and the average illumination when the luminaire is at different distance.

C Range: 0 - 360DEG
 C Interval: 15.0DEG
 Test Speed: HIGH
 Temperature: 24.9DEG
 Operators:Alan Wang
 Test Date:12 January 2024

γ Range: 0 - 180DEG
 γ Interval: 1.0DEG
 Test System:EVERFINE GO-R5000_V2 SYSTEM V2.00.416
 Humidity: 41.1%
 Test Distance:2.500m [K=1.0423]
 Remarks:

ISOLUX DIAGRAM

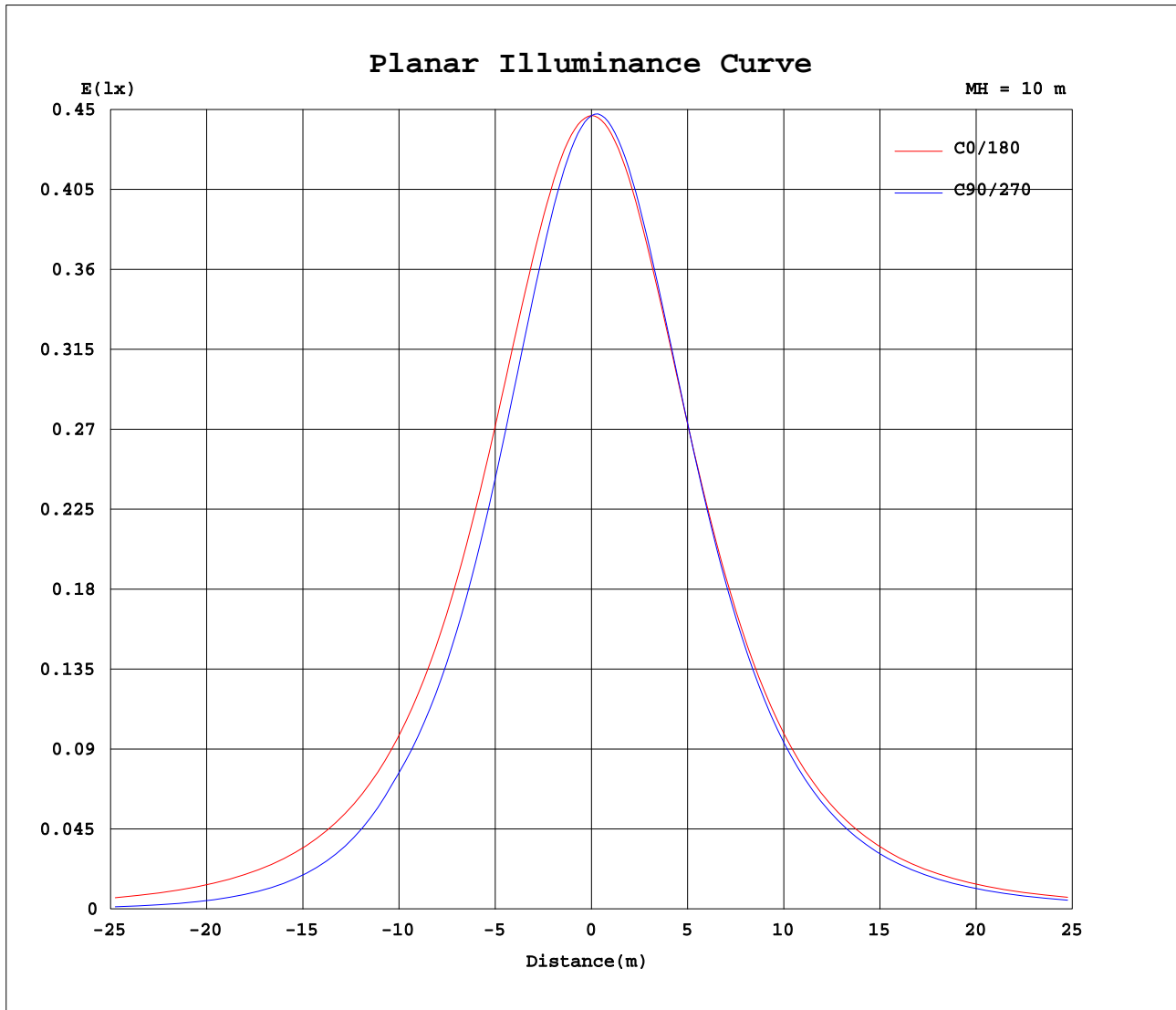
Test:U:12.0V I:0.2275A P:2.73W PF:1.0000 Freq:0Hz Lamp Flux:106.547x1 lm		
NAME:	TYPE:LED	WEIGHT:
SPEC.:ASD-HSLS7-5SM-RGB-BR_5000K	DIM.:	SERIAL No.:
MFR.: ASD Lighting Corp	SUR.:	Shielding Angle:



C Range: 0 - 360DEG
 C Interval: 15.0DEG
 Test Speed: HIGH
 Temperature: 24.9DEG
 Operators: Alan Wang
 Test Date: 12 January 2024

γ Range: 0 - 180DEG
 γ Interval: 1.0DEG
 Test System: EVERFINE GO-R5000_V2 SYSTEM V2.00.416
 Humidity: 41.1%
 Test Distance: 2.500m [K=1.0423]
 Remarks:

Planar Illuminance Curve



C Range: 0 - 360DEG
 C Interval: 15.0DEG
 Test Speed: HIGH
 Temperature: 24.9DEG
 Operators: Alan Wang
 Test Date: 12 January 2024

γ Range: 0 - 180DEG
 γ Interval: 1.0DEG
 Test System: EVERFINE GO-R5000_V2 SYSTEM V2.00.416
 Humidity: 41.1%
 Test Distance: 2.500m [K=1.0423]
 Remarks:

LUMINOUS DISTRIBUTION INTENSITY DATA

Test:U:12.0V I:0.2275A P:2.73W PF:1.0000 Freq:0Hz Lamp Flux:106.547x1 lm		
NAME:	TYPE:LED	WEIGHT:
SPEC.:ASD-HSL57-5SM-RGB-BR_5000K	DIM.:	SERIAL No.:
MFR.: ASD Lighting Corp	SUR.:	Shielding Angle:

Table--1

UNIT: cd

C(DEG) γ (DEG)	0	15	30	45	60	75	90	105	120	135	150	165	180	195	210	225	240	255	270
0	44.7	44.6	44.7	44.6	44.7	44.6	44.7	44.6	44.6	44.6	44.6	44.7	44.7	44.6	44.7	44.6	44.7	44.6	44.7
5	44.4	44.3	44.1	43.9	43.9	43.8	43.7	43.8	43.8	43.9	44.0	44.2	44.4	44.6	44.7	44.7	44.8	44.8	44.8
10	43.6	43.3	43.0	42.7	42.5	42.3	42.2	42.3	42.4	42.7	43.0	43.4	43.7	44.0	44.1	44.1	44.2	44.2	44.3
15	42.4	42.0	41.4	40.9	40.5	40.3	40.1	40.3	40.5	40.9	41.4	42.0	42.5	42.8	43.0	43.0	43.0	43.0	43.0
20	40.8	40.2	39.5	38.7	38.2	37.8	37.7	37.8	38.2	38.8	39.5	40.2	40.9	41.2	41.4	41.4	41.3	41.3	41.2
25	38.7	38.0	37.1	36.2	35.5	35.0	34.8	35.0	35.5	36.3	37.1	38.0	38.9	39.2	39.3	39.2	39.1	39.0	39.0
30	36.3	35.5	34.5	33.4	32.5	31.9	31.7	31.9	32.6	33.5	34.5	35.6	36.5	36.9	36.9	36.7	36.5	36.4	36.3
35	33.6	32.7	31.6	30.4	29.4	28.7	28.4	28.7	29.4	30.4	31.6	32.8	33.9	34.2	34.2	33.9	33.6	33.4	33.3
40	30.7	29.7	28.5	27.2	26.1	25.4	25.1	25.4	26.1	27.3	28.6	29.9	31.0	31.3	31.2	30.8	30.4	30.1	30.0
45	27.6	26.6	25.3	23.9	22.7	22.0	21.7	22.0	22.8	24.0	25.4	26.8	28.0	28.2	28.0	27.5	27.0	26.7	26.5
50	24.4	23.3	22.0	20.6	19.3	17.7	17.1	17.7	19.4	20.7	22.2	23.5	24.8	24.9	24.6	24.1	23.5	23.1	22.9
55	21.1	20.0	18.6	17.2	14.7	13.0	12.4	13.0	14.8	17.3	18.8	20.2	21.5	21.6	21.2	20.5	19.8	19.4	19.2
60	17.6	16.6	15.2	12.8	10.1	8.48	7.96	8.52	10.2	13.0	15.4	16.8	18.0	18.0	17.6	16.9	16.1	15.6	15.5
65	14.2	13.2	11.7	8.35	5.90	4.60	4.20	4.64	5.99	8.53	11.9	13.5	14.6	14.6	14.0	13.2	12.4	11.9	11.7
70	10.8	9.84	7.40	4.34	2.52	1.68	1.44	1.70	2.57	4.46	7.66	10.1	11.2	11.1	10.5	9.61	8.75	8.17	7.99
75	7.53	6.61	3.47	1.31	0.37	0.10	0.09	0.11	0.39	1.37	3.67	6.90	7.95	7.77	7.04	6.05	5.17	4.61	4.45
80	4.48	3.00	0.63	0.05	0.00	0.00	0.00	0.00	0.00	0.05	0.69	3.32	4.89	4.62	3.73	2.70	1.94	1.54	1.43
85	1.61	0.21	0.00	0.00	0.00	0.00	0.00	0.00	0.00	0.00	0.00	0.26	1.85	1.62	0.74	0.22	0.16	0.15	0.15
90	0.00	0.00	0.00	0.00	0.00	0.00	0.00	0.00	0.00	0.00	0.00	0.00	0.01	0.03	0.05	0.05	0.05	0.05	0.05
95	0.00	0.00	0.00	0.00	0.00	0.00	0.00	0.00	0.00	0.00	0.00	0.00	0.01	0.01	0.01	0.00	0.00	0.00	0.00
100	0.00	0.00	0.01	0.00	0.00	0.00	0.00	0.00	0.00	0.00	0.00	0.00	0.01	0.01	0.01	0.01	0.00	0.00	0.00
105	0.01	0.01	0.01	0.01	0.01	0.00	0.00	0.01	0.01	0.01	0.01	0.01	0.01	0.01	0.01	0.01	0.01	0.01	0.01
110	0.01	0.01	0.01	0.01	0.01	0.01	0.01	0.01	0.01	0.01	0.01	0.01	0.01	0.01	0.01	0.01	0.01	0.01	0.01
115	0.01	0.01	0.01	0.01	0.01	0.01	0.01	0.01	0.01	0.01	0.01	0.01	0.01	0.01	0.01	0.01	0.01	0.01	0.01
120	0.01	0.01	0.01	0.01	0.01	0.01	0.01	0.01	0.01	0.01	0.01	0.01	0.01	0.01	0.01	0.01	0.01	0.01	0.01
125	0.01	0.01	0.01	0.01	0.01	0.01	0.01	0.01	0.01	0.01	0.01	0.01	0.01	0.01	0.01	0.01	0.01	0.01	0.01
130	0.02	0.02	0.02	0.01	0.02	0.01	0.02	0.02	0.02	0.02	0.02	0.02	0.02	0.02	0.02	0.02	0.02	0.02	0.02
135	0.02	0.02	0.02	0.02	0.02	0.02	0.02	0.02	0.02	0.02	0.02	0.02	0.02	0.02	0.02	0.02	0.02	0.02	0.02
140	0.02	0.02	0.02	0.02	0.02	0.02	0.02	0.02	0.02	0.02	0.02	0.02	0.02	0.03	0.03	0.02	0.03	0.02	0.02
145	0.02	0.02	0.02	0.02	0.02	0.02	0.02	0.02	0.02	0.02	0.02	0.02	0.02	0.03	0.03	0.03	0.03	0.03	0.03
150	0.02	0.02	0.02	0.02	0.02	0.02	0.02	0.02	0.02	0.02	0.02	0.02	0.02	0.03	0.03	0.03	0.03	0.03	0.03
155	0.02	0.03	0.03	0.03	0.03	0.03	0.03	0.03	0.03	0.02	0.03	0.02	0.04	0.04	0.04	0.04	0.04	0.04	0.04
160	0.03	0.03	0.03	0.03	0.03	0.03	0.03	0.03	0.03	0.03	0.03	0.03	0.04	0.04	0.04	0.04	0.04	0.04	0.04
165	0.03	0.03	0.03	0.03	0.03	0.03	0.03	0.03	0.03	0.03	0.03	0.03	0.04	0.04	0.04	0.04	0.04	0.04	0.04
170	0.03	0.03	0.03	0.03	0.03	0.03	0.03	0.03	0.03	0.03	0.03	0.03	0.04	0.04	0.04	0.04	0.04	0.04	0.04
175	0.03	0.04	0.04	0.04	0.03	0.03	0.03	0.03	0.03	0.03	0.03	0.03	0.04	0.04	0.04	0.04	0.04	0.04	0.03
180	0.03	0.04	0.04	0.03	0.04	0.03	0.03	0.03	0.03	0.03	0.03	0.03	0.04	0.04	0.04	0.04	0.04	0.04	0.03

C Range: 0 - 360DEG
 C Interval: 15.0DEG
 Test Speed: HIGH
 Temperature: 24.9DEG
 Operators: Alan Wang
 Test Date: 12 January 2024

γ Range: 0 - 180DEG
 γ Interval: 1.0DEG
 Test System: EVERFINE GO-R5000_V2 SYSTEM V2.00.416
 Humidity: 41.1%
 Test Distance: 2.500m [K=1.0423]
 Remarks:

LUMINOUS DISTRIBUTION INTENSITY DATA

Test:U:12.0V I:0.2275A P:2.73W PF:1.0000 Freq:0Hz Lamp Flux:106.547x1 lm		
NAME:	TYPE:LED	WEIGHT:
SPEC.:ASD-HSL57-5SM-RGB-BR_5000K	DIM.:	SERIAL No.:
MFR.: ASD Lighting Corp	SUR.:	Shielding Angle:

Table--2

UNIT: cd

C(DEG) γ (DEG)	285	300	315	330	345														
0	44.6	44.6	44.6	44.6	44.7														
5	44.8	44.7	44.7	44.6	44.5														
10	44.2	44.2	44.1	44.1	43.9														
15	43.0	43.0	43.0	42.9	42.8														
20	41.3	41.3	41.3	41.3	41.2														
25	39.0	39.1	39.2	39.3	39.2														
30	36.4	36.5	36.7	36.9	36.8														
35	33.4	33.6	33.9	34.1	34.2														
40	30.1	30.4	30.8	31.1	31.2														
45	26.7	27.1	27.5	27.9	28.1														
50	23.1	23.5	24.1	24.6	24.8														
55	19.4	19.9	20.5	21.1	21.4														
60	15.7	16.2	16.9	17.5	17.9														
65	11.9	12.5	13.2	14.0	14.4														
70	8.22	8.81	9.63	10.4	11.0														
75	4.66	5.24	6.09	6.99	7.61														
80	1.57	2.00	2.75	3.71	4.46														
85	0.15	0.16	0.25	0.81	1.63														
90	0.05	0.05	0.05	0.04	0.02														
95	0.00	0.00	0.00	0.01	0.01														
100	0.00	0.01	0.01	0.01	0.01														
105	0.01	0.01	0.01	0.01	0.01														
110	0.01	0.01	0.01	0.01	0.01														
115	0.01	0.01	0.01	0.01	0.01														
120	0.01	0.01	0.01	0.01	0.01														
125	0.01	0.01	0.01	0.01	0.02														
130	0.02	0.02	0.02	0.02	0.02														
135	0.02	0.02	0.02	0.02	0.02														
140	0.02	0.02	0.02	0.02	0.02														
145	0.03	0.03	0.03	0.03	0.03														
150	0.03	0.03	0.03	0.03	0.03														
155	0.04	0.04	0.04	0.04	0.04														
160	0.04	0.04	0.04	0.04	0.04														
165	0.04	0.04	0.04	0.04	0.04														
170	0.04	0.04	0.04	0.04	0.04														
175	0.04	0.04	0.04	0.04	0.04														
180	0.03	0.03	0.03	0.03	0.03														

C Range: 0 - 360DEG
 C Interval: 15.0DEG
 Test Speed: HIGH
 Temperature: 24.9DEG
 Operators: Alan Wang
 Test Date: 12 January 2024

γ Range: 0 - 180DEG
 γ Interval: 1.0DEG
 Test System: EVERFINE GO-R5000_V2 SYSTEM V2.00.416
 Humidity: 41.1%
 Test Distance: 2.500m [K=1.0423]
 Remarks: