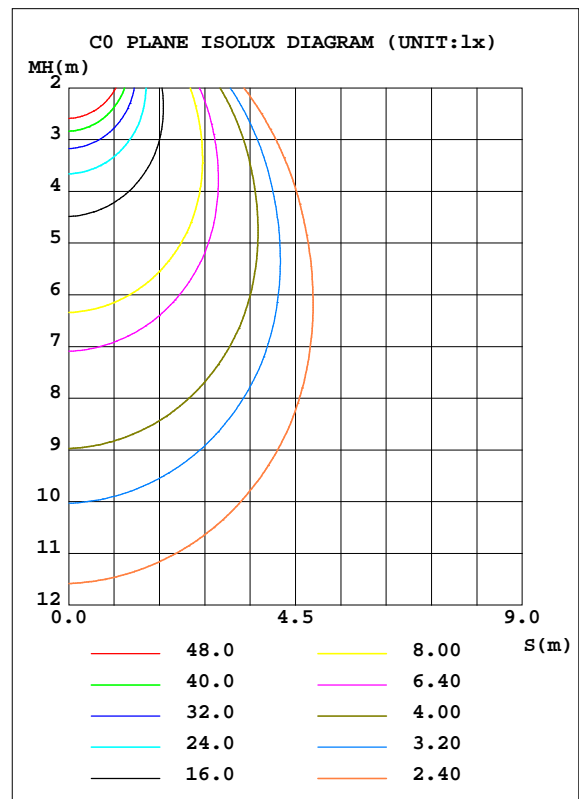
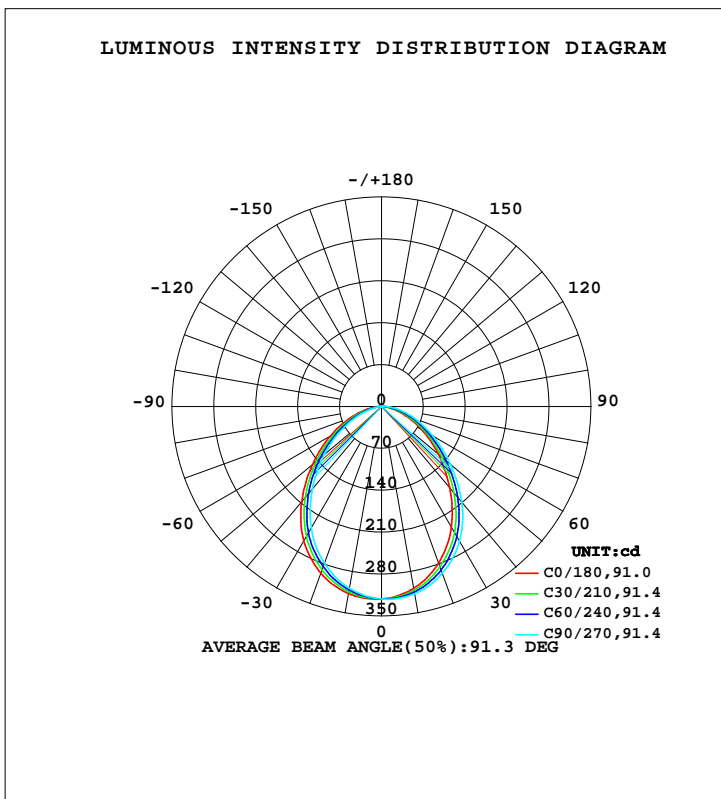


LUMINAIRE PHOTOMETRIC TEST REPORT

NAME:ASD-LRK-GBR-4D10AC-WH 2700K	TYPE:	WEIGHT:
SPEC.:	DIM.:	SERIAL No.:
MFR.: ASD LIGHTING CORP	SUR.: 0.175*0.175	Shielding Angle:

DATA OF LAMP		PHOTOMETRIC DATA			
ASD-LRK-GBR-4D10AC-WH(2700K)		Imax(cd)	322.5	S/MH(C0/180)	1.20
NOMINAL POWER(W)	10	LOR(%)	100.0	S/MH(C90/270)	1.11
RATED VOLTAGE(V)	120	TOTAL FLUX(lm)	650.00	h UP, DN(C0-180)	0.4, 51.6
NOMINAL FLUX(lm)	650.998	CIE CLASS	DIRECT	h UP, DN(C180-360)	0.4, 47.5
LAMPS INSIDE	1	h up(%)	0.9	CIBSE SHR NOM	1.25
TEST VOLTAGE(V)	120.0	h down(%)	99.1	CIBSE SHR MAX	1.30



C Range: 0 - 360DEG
 C Interval: 30.0DEG
 Test Speed: HIGH
 Temperature: 25.3DEG
 Operators:
 Test Date: 2021-12-23

g Range: 0 - 180DEG
 g Interval: 1.0DEG
 Test System: EVERFINE GO-2000B_V1 SYSTEM V2.00.426
 Humidity: 65.0%
 Test Distance: 8.000m [K=1.0000]
 Remarks:

ZONAL FLUX DIAGRAM

ZONAL FLUX DIAGRAM:

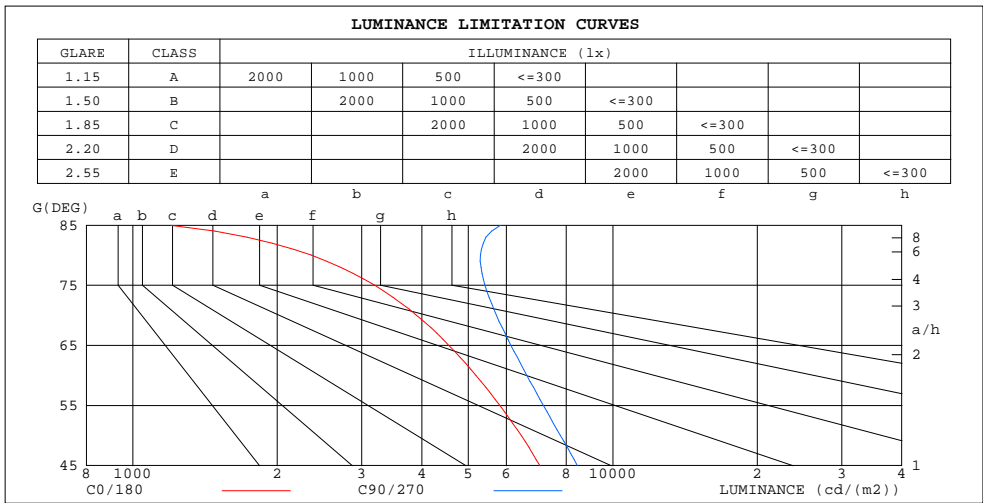
g	C0	C45	C90	C135	C180	C225	C270	C315	g	F zone	F total	%lum,lamp
10	308.5	313.3	317.6	319.0	317.4	312.9	308.5	307.0	0- 10	30.29	30.29	4.21,4.21
20	278.4	288.1	296.6	299.4	296.6	287.7	278.9	276.3	10- 20	85.16	115.4	16.1,16.1
30	233.4	247.6	260.3	263.3	259.8	247.6	234.9	231.0	20- 30	123.8	239.3	33.3,33.3
40	177.1	193.2	208.7	212.8	207.6	194.1	180.0	176.0	30- 40	138.4	377.6	52.5,52.5
50	124.2	136.5	150.1	154.3	150.5	137.6	125.5	121.8	40- 50	127.4	505.1	70.2,70.2
60	77.73	88.19	99.36	102.3	98.68	86.71	76.37	74.18	50- 60	100.1	605.1	84.2,84.2
70	39.98	49.31	58.72	59.95	55.27	44.85	36.50	35.87	60- 70	66.16	671.3	93.4,93.4
80	12.26	19.34	27.62	26.89	21.75	13.89	8.262	8.628	70- 80	33.23	704.5	98,98
90	0.1752	0.4413	2.541	1.882	1.042	0.1194	0.1575	0.1601	80- 90	8.278	712.8	99.1,99.1
100	0.3866	0.3196	0.2660	0.2614	0.2432	0.3016	0.3647	0.3675	90-100	0.2850	713.1	99.2,99.2
110	0.6656	0.5874	0.5228	0.5094	0.4727	0.5537	0.6306	0.6424	100-110	0.4625	713.5	99.2,99.2
120	0.9939	0.9025	0.8383	0.8091	0.7697	0.8688	0.9549	0.9557	110-120	0.7194	714.3	99.3,99.3
130	1.318	1.233	1.172	1.132	1.089	1.193	1.293	1.280	120-130	0.9386	715.2	99.5,99.5
140	1.606	1.542	1.487	1.458	1.400	1.481	1.577	1.564	130-140	1.055	716.3	99.6,99.6
150	1.885	1.825	1.775	1.736	1.692	1.731	1.820	1.824	140-150	1.032	717.3	99.8,99.8
160	2.114	2.057	2.023	1.999	1.958	1.988	2.054	2.058	150-160	0.8804	718.2	99.9,99.9
170	2.281	2.269	2.248	2.238	2.205	2.226	2.266	2.277	160-170	0.6046	718.8	100,100
180	2.371	2.377	2.383	2.394	2.376	2.384	2.383	2.396	170-180	0.2204	719.0	100,100
DEG	LUMINOUS INTENSITY:cd									UNIT:lm		

C Range: 0 - 360DEG
 C Interval: 30.0DEG
 Test Speed: HIGH
 Temperature:25.3DEG
 Operators:
 Test Date:2021-12-23

g Range: 0 - 180DEG
 g Interval: 1.0DEG
 Test System:EVERFINE GO-2000B_V1 SYSTEM V2.00.426
 Humidity:65.0%
 Test Distance:8.000m [K=1.0000]
 Remarks:

LUMINANCE LIMITATION CURVES

NAME:	TYPE:	WEIGHT:
SPEC.:	DIM.:	SERIAL No.:
MFR.: ASD LIGHTING CORP	SUR.: 0.175*0.175	Shielding Angle:



LUMINANCE cd/(m2)		
G(DEG)	C0/180	C90/270
85	1201	5824
80	2356	5300
75	3191	5416
70	3900	5721
65	4556	6135
60	5187	6622
55	5817	7168
50	6446	7781
45	7053	8440

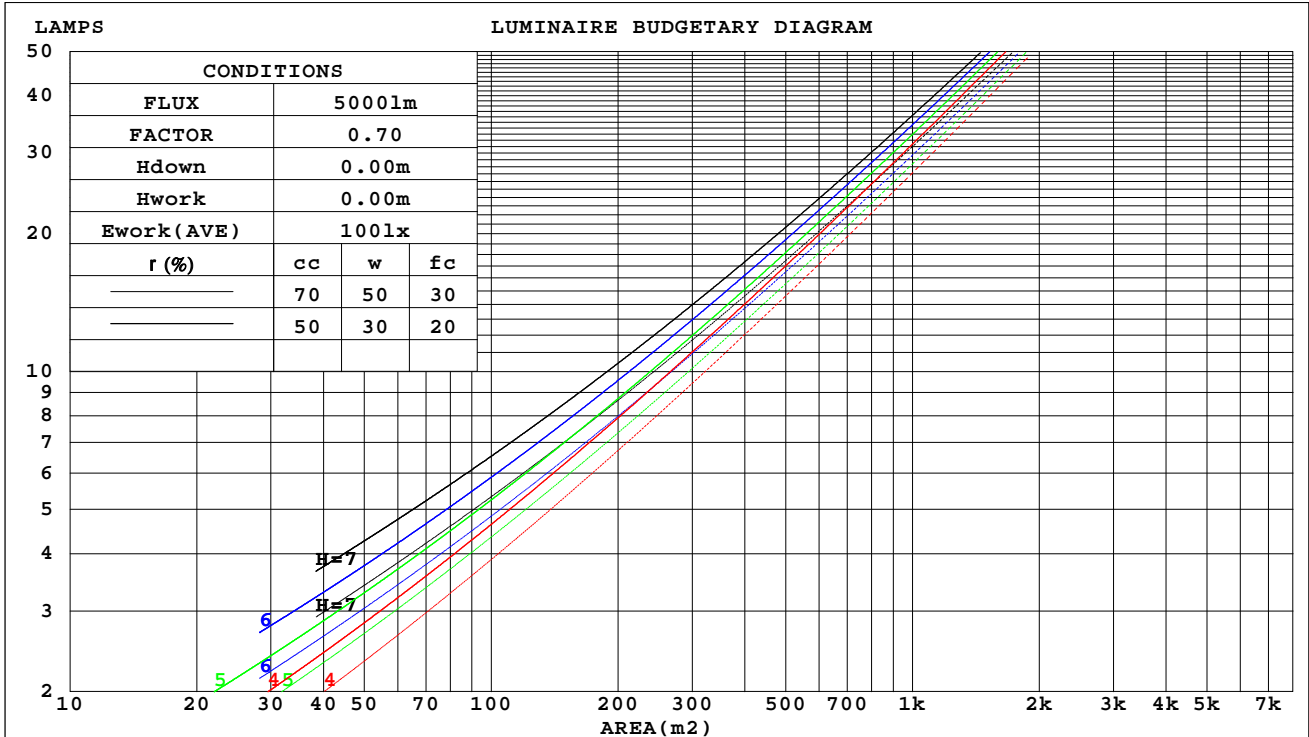
C Range: 0 - 360DEG
 C Interval: 30.0DEG
 Test Speed: HIGH
 Temperature: 25.3DEG
 Operators:
 Test Date: 2021-12-23

g Range: 0 - 180DEG
 g Interval: 1.0DEG
 Test System: EVERFINE GO-2000B_V1 SYSTEM V2.00.426
 Humidity: 65.0%
 Test Distance: 8.000m [K=1.0000]
 Remarks:

CU AND LUMINAIRE BUDGETARY ESTIMATE DIAGRAM

NAME:	TYPE:	WEIGHT:
SPEC.:	DIM.:	SERIAL No.:
MFR.: ASD LIGHTING CORP	SUR.: 0.175*0.175	Shielding Angle:

r _{cc}	80%			70%			50%			30%			10%			0
r _w	50%	30%	10%	50%	30%	10%	50%	30%	10%	50%	30%	10%	50%	30%	10%	0
r _{fc}	20%			20%			20%			20%			20%			0
RCR	RCR:Room Cavity Ratio						Coefficients of Utilization(CU)									
0.0	1.19	1.19	1.19	1.16	1.16	1.16	1.11	1.11	1.11	1.06	1.06	1.06	1.01	1.01	1.01	.99
1.0	1.05	1.02	.98	1.03	.90	.96	.99	.96	.93	.95	.92	.90	.91	.89	.87	.85
2.0	.93	.87	.82	.91	.85	.81	.88	.83	.79	.84	.80	.77	.81	.78	.75	.73
3.0	.83	.75	.69	.81	.74	.69	.78	.72	.67	.75	.70	.66	.73	.68	.65	.63
4.0	.74	.66	.60	.73	.65	.59	.70	.63	.58	.68	.62	.57	.66	.61	.57	.54
5.0	.67	.58	.52	.66	.58	.52	.63	.56	.51	.61	.55	.50	.59	.54	.50	.48
6.0	.60	.52	.46	.59	.51	.46	.58	.51	.45	.56	.50	.45	.54	.49	.44	.42
7.0	.55	.47	.41	.54	.46	.41	.53	.46	.40	.51	.45	.40	.50	.44	.40	.38
8.0	.51	.42	.37	.50	.42	.37	.48	.41	.36	.47	.41	.36	.46	.40	.36	.34
9.0	.47	.39	.33	.46	.38	.33	.45	.38	.33	.44	.37	.33	.43	.37	.33	.31
10.0	.43	.36	.30	.43	.35	.30	.42	.35	.30	.41	.34	.30	.40	.34	.30	.28



C Range: 0 - 360DEG
 C Interval: 30.0DEG
 Test Speed: HIGH
 Temperature: 25.3DEG
 Operators:
 Test Date: 2021-12-23

g Range: 0 - 180DEG
 g Interval: 1.0DEG
 Test System: EVERFINE GO-2000B_V1 SYSTEM V2.00.426
 Humidity: 65.0%
 Test Distance: 8.000m [K=1.0000]
 Remarks:

WEC AND CCEC

NAME:	TYPE:	WEIGHT:
SPEC.:	DIM.:	SERIAL No.:
MFR.: ASD LIGHTING CORP	SUR.: 0.175*0.175	Shielding Angle:

rcc	80%			70%			50%			30%			10%			0
rw	50%	30%	10%	50%	30%	10%	50%	30%	10%	50%	30%	10%	50%	30%	10%	0
rfc	20%			20%			20%			20%			20%			0
RCR	RCR:Room Cavity Ratio						Wall Exitance Coefficients(WEC)									
0.0																
1.0	.277	.157	.050	.270	.154	.049	.256	.147	.047	.244	.141	.045	.232	.135	.043	
2.0	.264	.145	.044	.258	.142	.044	.246	.137	.042	.235	.132	.041	.225	.127	.040	
3.0	.247	.131	.039	.241	.129	.039	.231	.125	.038	.221	.121	.037	.212	.118	.036	
4.0	.230	.120	.035	.225	.118	.035	.216	.114	.034	.207	.111	.034	.199	.108	.033	
5.0	.214	.109	.032	.210	.108	.031	.202	.105	.031	.194	.102	.030	.187	.100	.030	
6.0	.200	.100	.029	.196	.099	.029	.189	.097	.028	.182	.095	.028	.176	.092	.027	
7.0	.187	.093	.026	.184	.092	.026	.177	.090	.026	.171	.088	.026	.165	.086	.025	
8.0	.176	.086	.024	.173	.085	.024	.167	.083	.024	.161	.082	.024	.156	.080	.023	
9.0	.166	.080	.022	.163	.079	.022	.157	.078	.022	.152	.076	.022	.148	.075	.022	
10.0	.156	.075	.021	.154	.074	.021	.149	.073	.021	.144	.072	.020	.140	.070	.020	

rcc	80%			70%			50%			30%			10%			0
rw	50%	30%	10%	50%	30%	10%	50%	30%	10%	50%	30%	10%	50%	30%	10%	0
rfc	20%			20%			20%			20%			20%			0
RCR	RCR:Room Cavity Ratio						Ceiling Cavity Exitance Coefficients(CCEC)									
0.0	.197	.197	.197	.168	.168	.168	.115	.115	.115	.066	.066	.066	.021	.021	.021	
1.0	.185	.163	.144	.158	.140	.124	.108	.096	.085	.062	.056	.050	.020	.018	.016	
2.0	.175	.139	.108	.150	.119	.093	.103	.083	.065	.059	.048	.038	.019	.016	.012	
3.0	.167	.121	.084	.143	.104	.073	.098	.072	.051	.057	.042	.030	.018	.014	.010	
4.0	.159	.107	.068	.136	.093	.059	.094	.065	.042	.054	.038	.025	.017	.012	.008	
5.0	.151	.097	.056	.130	.084	.049	.090	.058	.035	.052	.034	.021	.017	.011	.007	
6.0	.144	.088	.048	.124	.076	.042	.086	.053	.029	.050	.031	.018	.016	.010	.006	
7.0	.138	.081	.042	.119	.070	.036	.082	.049	.026	.048	.029	.015	.015	.010	.005	
8.0	.132	.075	.037	.113	.065	.032	.078	.046	.023	.046	.027	.014	.015	.009	.004	
9.0	.126	.070	.033	.108	.061	.029	.075	.043	.020	.044	.025	.012	.014	.008	.004	
10.0	.121	.066	.030	.104	.057	.026	.072	.040	.019	.042	.024	.011	.014	.008	.004	

C Range: 0 - 360DEG
 C Interval: 30.0DEG
 Test Speed: HIGH
 Temperature:25.3DEG
 Operators:
 Test Date:2021-12-23

g Range: 0 - 180DEG
 g Interval: 1.0DEG
 Test System:EVERFINE GO-2000B_V1 SYSTEM V2.00.426
 Humidity:65.0%
 Test Distance:8.000m [K=1.0000]
 Remarks:

UGR(Unified Glare Rating) Table

NAME:		TYPE:					WEIGHT:				
SPEC.:		DIM.:					SERIAL No.:				
MFR.: ASD LIGHTING CORP		SUR.: 0.175*0.175					Shielding Angle:				
ceiling/cavity	0.7	0.7	0.5	0.5	0.3	0.7	0.7	0.5	0.5	0.3	
walls	0.5	0.3	0.5	0.3	0.3	0.5	0.3	0.5	0.3	0.3	
working plane	0.2	0.2	0.2	0.2	0.2	0.2	0.2	0.2	0.2	0.2	
Room dimensions	Viewed crosswise					Viewed endwise					
x = 2H y = 2H	19.6	21.0	19.9	21.2	21.5	20.5	21.9	20.8	22.1	22.3	
3H	20.6	21.9	20.9	22.1	22.4	21.7	23.0	22.0	23.3	23.5	
4H	20.9	22.1	21.2	22.4	22.6	22.3	23.5	22.6	23.8	24.0	
6H	21.0	22.2	21.4	22.5	22.7	22.7	23.9	23.1	24.2	24.4	
8H	21.0	22.1	21.4	22.4	22.7	22.9	24.0	23.2	24.3	24.6	
12H	21.0	22.1	21.4	22.4	22.7	23.1	24.1	23.4	24.4	24.7	
4H 2H	20.2	21.4	20.5	21.7	21.9	20.9	22.1	21.2	22.3	22.6	
3H	21.3	22.4	21.7	22.7	23.0	22.3	23.4	22.7	23.7	24.0	
4H	21.7	22.7	22.1	23.0	23.4	23.0	23.9	23.3	24.3	24.6	
6H	22.0	22.8	22.4	23.2	23.6	23.5	24.4	24.0	24.8	25.1	
8H	22.0	22.8	22.4	23.2	23.6	23.8	24.6	24.2	25.0	25.4	
12H	22.0	22.7	22.4	23.1	23.6	24.0	24.7	24.4	25.1	25.6	
8H 4H	22.0	22.8	22.4	23.1	23.5	23.1	23.9	23.5	24.3	24.7	
6H	22.3	23.0	22.8	23.4	23.8	23.8	24.5	24.3	24.9	25.3	
8H	22.4	23.0	22.9	23.4	23.9	24.1	24.7	24.6	25.2	25.6	
12H	22.5	23.0	22.9	23.4	23.9	24.5	25.0	24.9	25.4	25.9	
12H 4H	22.0	22.7	22.4	23.1	23.5	23.1	23.8	23.5	24.2	24.6	
6H	22.4	23.0	22.9	23.4	23.9	23.8	24.4	24.3	24.8	25.3	
8H	22.5	23.0	23.0	23.5	24.0	24.2	24.7	24.7	25.1	25.6	
Variations with the observer position at spacings(CIE Pub.117):											
S = 1.0H	+ 0.3 / - 0.4					+ 0.2 / - 0.3					
1.5H	+ 0.1 / - 0.3					+ 0.1 / - 0.2					
2.0H	+ 0.4 / - 0.6					+ 0.4 / - 0.4					

CIE Pub.117, 719.0 lm Total Lamp Luminous Flux Correct (8log(F/F0) = -1.1)
 Area: 0.03 m2

C Range: 0 - 360DEG
 C Interval: 30.0DEG
 Test Speed: HIGH
 Temperature:25.3DEG
 Operators:
 Test Date:2021-12-23

g Range: 0 - 180DEG
 g Interval: 1.0DEG
 Test System:EVERFINE GO-2000B_V1 SYSTEM V2.00.426
 Humidity:65.0%
 Test Distance:8.000m [K=1.0000]
 Remarks:

UTILIZATION FACTORS TABLE

NAME:	TYPE:	WEIGHT:
SPEC.:	DIM.:	SERIAL No.:
MFR.: ASD LIGHTING CORP	SUR.: 0.175*0.175	Shielding Angle:

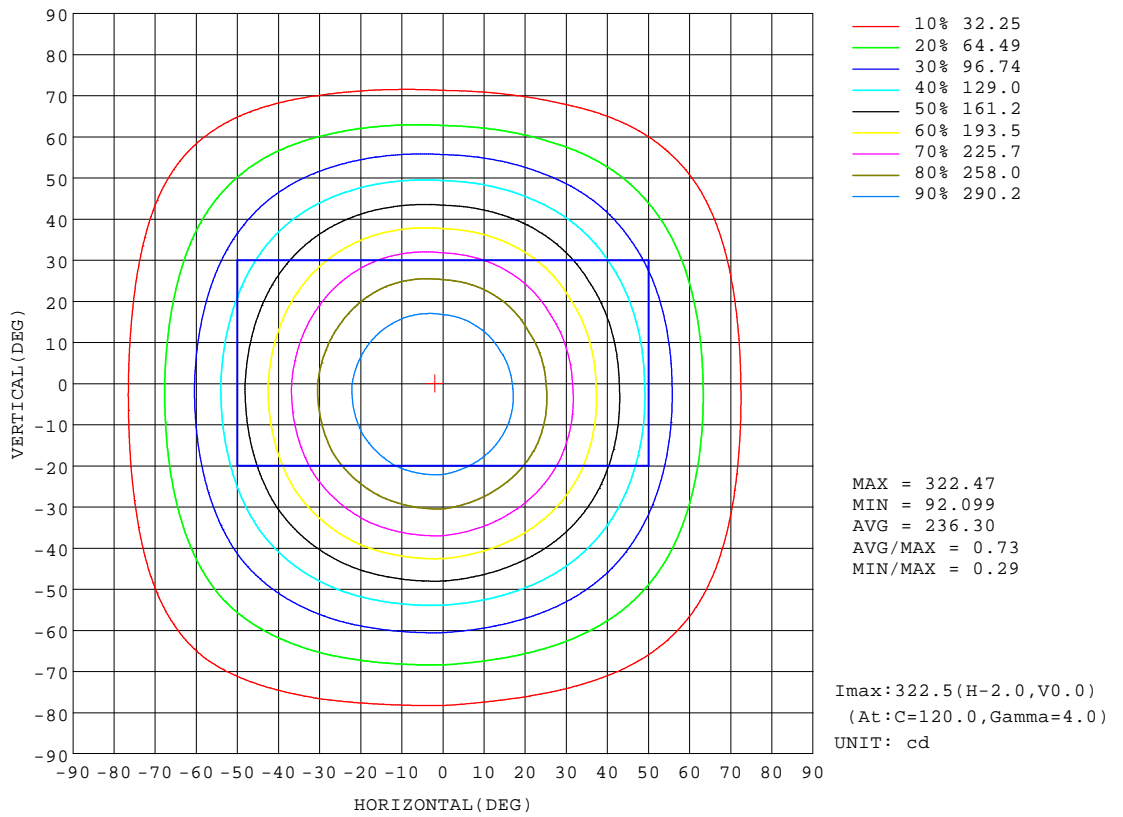
REFLECTANCE										
Ceiling	0.8	0.8	0.8	0.7	0.7	0.7	0.5	0.5	0.5	0
Walls	0.7	0.5	0.3	0.7	0.5	0.3	0.7	0.5	0.3	0
Working plane	0.2	0.2	0.2	0.2	0.2	0.2	0.2	0.2	0.2	0
ROOM INDEX	UTILIZATION FACTORS(PERCENT) $k(RI) \times RCR = 5$									
k = 0.60	62	51	45	61	51	45	60	51	45	39
0.80	72	61	55	71	61	54	69	60	54	48
1.00	80	70	63	79	69	63	77	70	63	56
1.25	87	77	71	85	77	71	83	75	70	63
1.50	91	83	76	90	82	76	87	80	75	68
2.00	98	90	84	96	89	84	92	87	82	74
2.50	101	94	89	99	93	88	95	90	86	78
3.00	104	98	93	102	96	92	98	93	90	81
4.00	108	103	98	105	101	97	101	97	94	85
5.00	110	105	102	107	104	100	103	100	97	88
ROOM INDEX	UF(total)									Direct
According to DIN EN 13032-2 2004			Suspended				SHRNOM = 1.25			

C Range: 0 - 360DEG
 C Interval: 30.0DEG
 Test Speed: HIGH
 Temperature: 25.3DEG
 Operators:
 Test Date: 2021-12-23

g Range: 0 - 180DEG
 g Interval: 1.0DEG
 Test System: EVERFINE GO-2000B_V1 SYSTEM V2.00.426
 Humidity: 65.0%
 Test Distance: 8.000m [K=1.0000]
 Remarks:

ISOCANDELA DIAGRAM

NAME:	TYPE:	WEIGHT:
SPEC.:	DIM.:	SERIAL No.:
MFR.: ASD LIGHTING CORP	SUR.: 0.175*0.175	Shielding Angle:



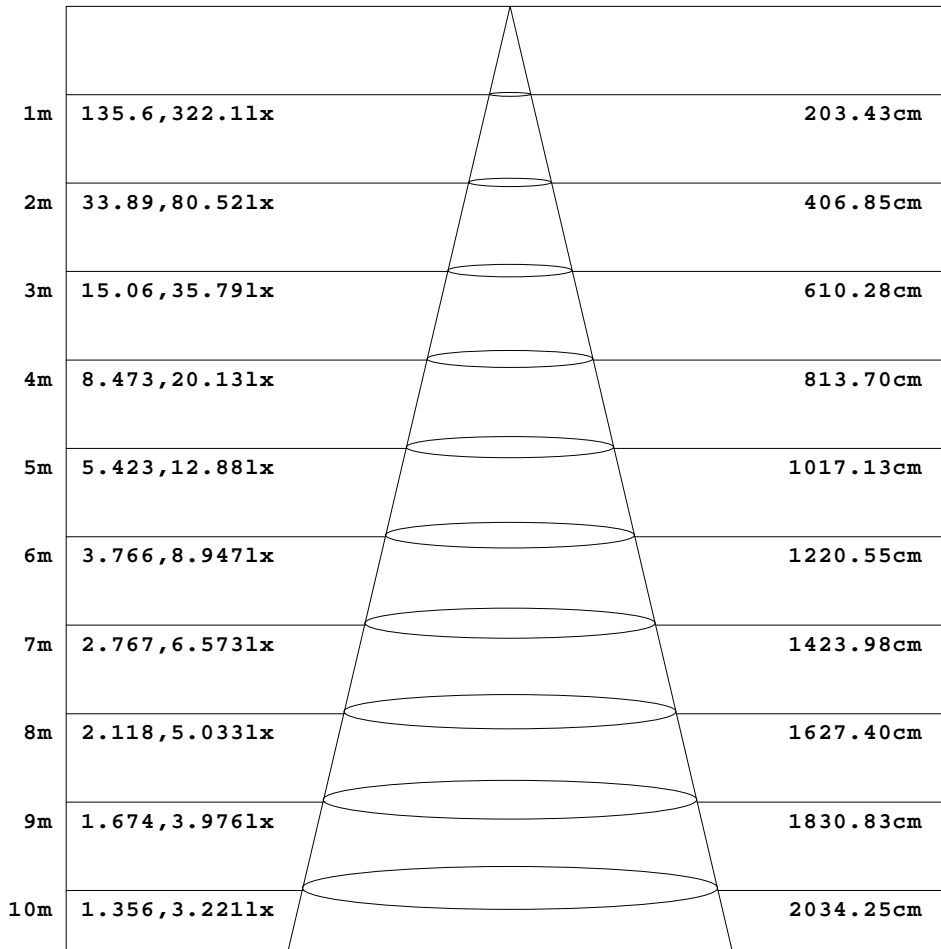
C Range: 0 - 360DEG
 C Interval: 30.0DEG
 Test Speed: HIGH
 Temperature: 25.3DEG
 Operators:
 Test Date: 2021-12-23

g Range: 0 - 180DEG
 g Interval: 1.0DEG
 Test System: EVERFINE GO-2000B_V1 SYSTEM V2.00.426
 Humidity: 65.0%
 Test Distance: 8.000m [K=1.0000]
 Remarks:

AAI Figure

NAME:	TYPE:	WEIGHT:
SPEC.:	DIM.:	SERIAL No.:
MFR.: ASD LIGHTING CORP	SUR.: 0.175*0.175	Shielding Angle:

Flux out:456.7 lm



Height Eavg, Emax Angle:90.97deg Diameter

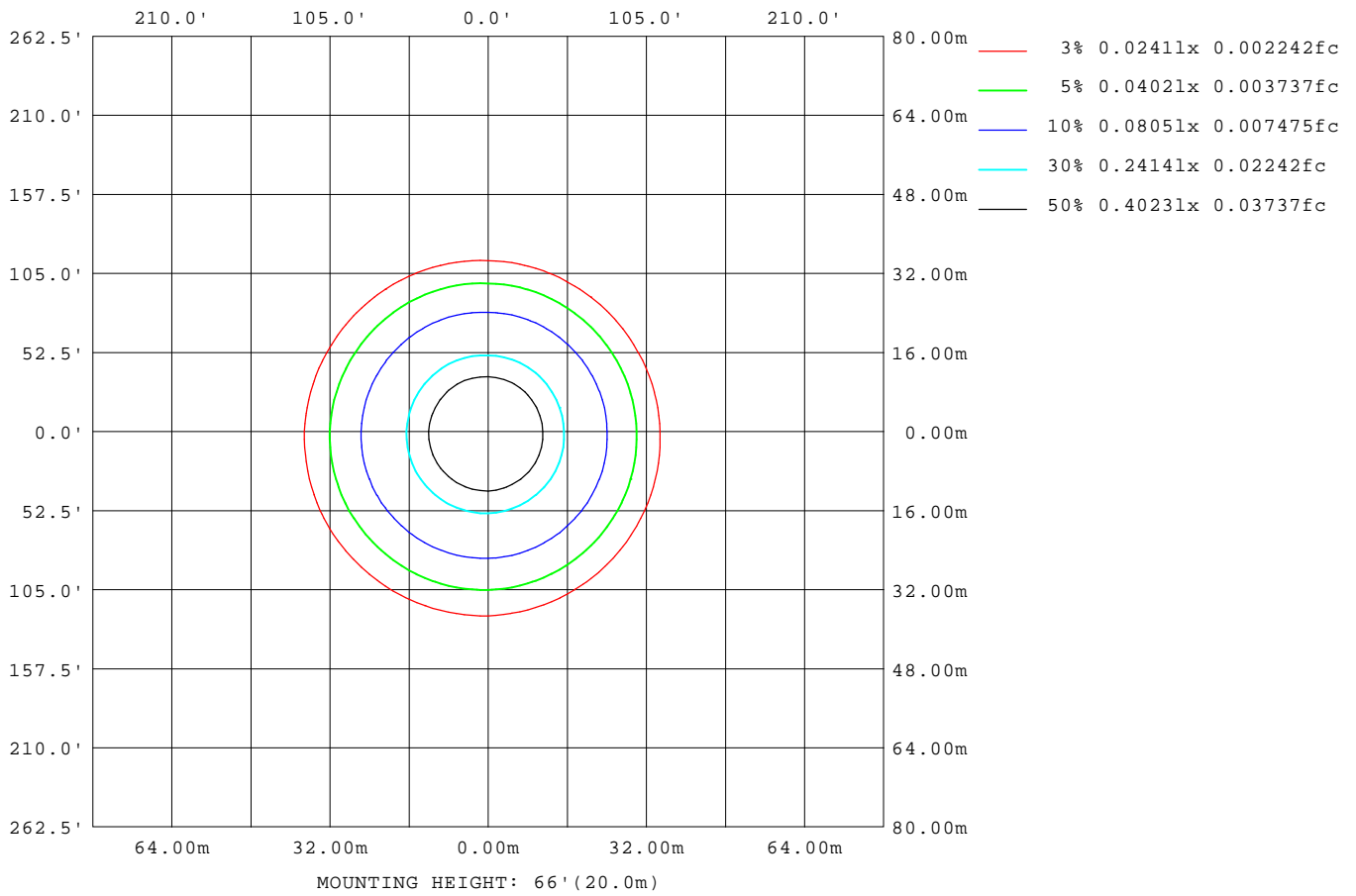
Note:The Curves indicate the illuminated area and the average illumination when the luminaire is at different distance.

C Range: 0 - 360DEG
 C Interval: 30.0DEG
 Test Speed: HIGH
 Temperature:25.3DEG
 Operators:
 Test Date:2021-12-23

g Range: 0 - 180DEG
 g Interval: 1.0DEG
 Test System:EVERFINE GO-2000B_V1 SYSTEM V2.00.426
 Humidity:65.0%
 Test Distance:8.000m [K=1.0000]
 Remarks:

ISOLUX DIAGRAM

NAME:	TYPE:	WEIGHT:
SPEC.:	DIM.:	SERIAL No.:
MFR.: ASD LIGHTING CORP	SUR.: 0.175*0.175	Shielding Angle:



C Range: 0 - 360DEG
 C Interval: 30.0DEG
 Test Speed: HIGH
 Temperature: 25.3DEG
 Operators:
 Test Date: 2021-12-23

g Range: 0 - 180DEG
 g Interval: 1.0DEG
 Test System: EVERFINE GO-2000B_V1 SYSTEM V2.00.426
 Humidity: 65.0%
 Test Distance: 8.000m [K=1.0000]
 Remarks:

LED Avg.L Report

NAME:	TYPE:	WEIGHT:
SPEC.:	DIM.:	SERIAL No.:
MFR.: ASD LIGHTING CORP	SUR.: 0.175*0.175	Shielding Angle:

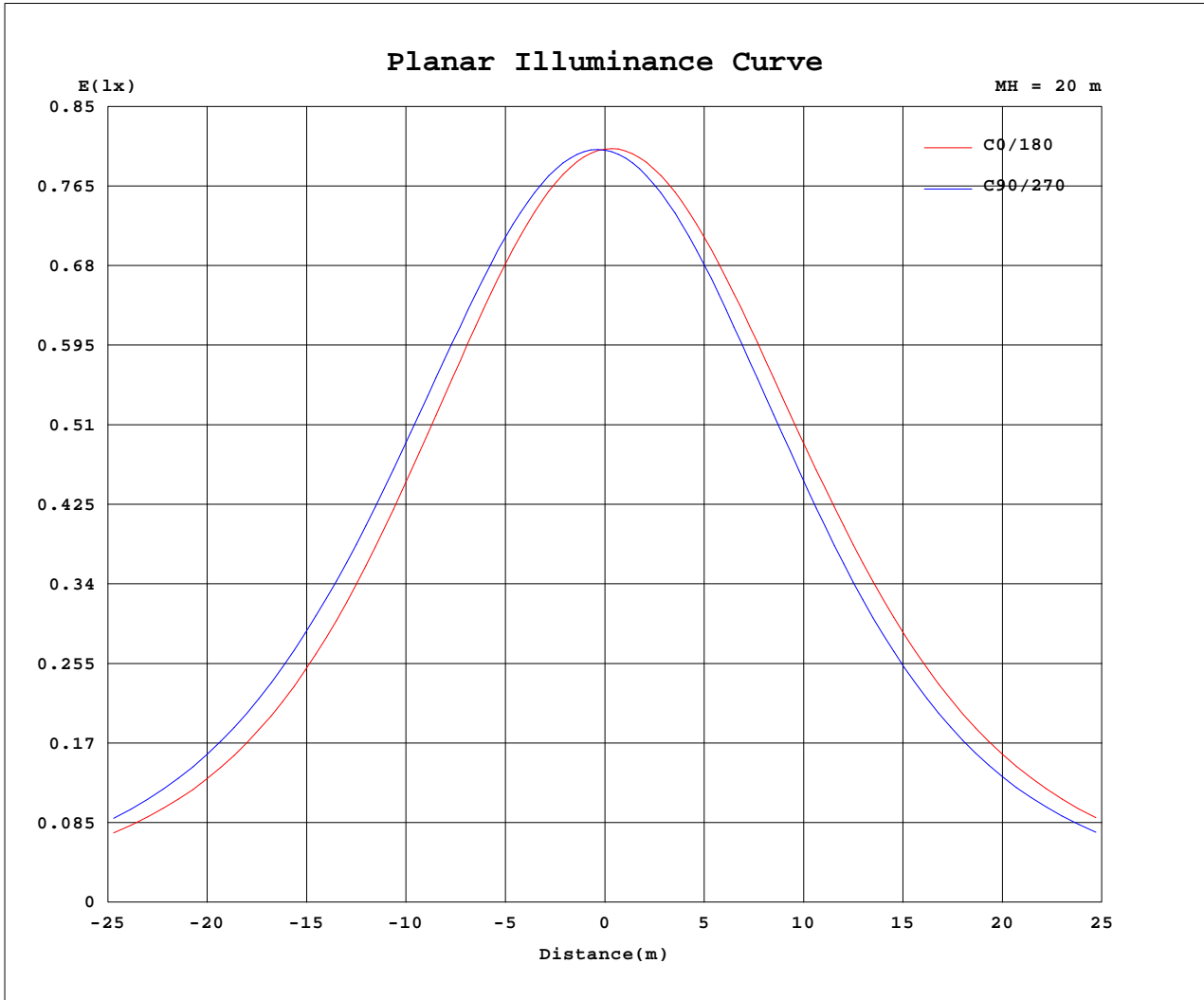
AvgL	cd/m2
L_0~180(65)av	5264
L_0~180(75)av	3990
L_0~180(85)av	2411
L_90~270(65)av	5245
L_90~270(75)av	4037
L_90~270(85)av	2951
L_45(65)av	5240
L_45(75)av	3992
L_45(85)av	2474

Standard: GB/T 29293-2012

C Range: 0 - 360DEG
 C Interval: 30.0DEG
 Test Speed: HIGH
 Temperature:25.3DEG
 Operators:
 Test Date:2021-12-23

g Range: 0 - 180DEG
 g Interval: 1.0DEG
 Test System:EVERFINE GO-2000B_V1 SYSTEM V2.00.426
 Humidity:65.0%
 Test Distance:8.000m [K=1.0000]
 Remarks:

Planar Illuminance Curve



C Range: 0 - 360DEG
 C Interval: 30.0DEG
 Test Speed: HIGH
 Temperature: 25.3DEG
 Operators:
 Test Date: 2021-12-23

g Range: 0 - 180DEG
 g Interval: 1.0DEG
 Test System: EVERFINE GO-2000B_V1 SYSTEM V2.00.426
 Humidity: 65.0%
 Test Distance: 8.000m [K=1.0000]
 Remarks:

LUMINOUS DISTRIBUTION INTENSITY DATA

NAME:	TYPE:	WEIGHT:
SPEC.:	DIM.:	SERIAL No.:
MFR.: ASD LIGHTING CORP	SUR.: 0.175*0.175	Shielding Angle:

Table--1

UNIT: cd

C(DEG) g (DEG)	0	30	60	90	120	150	180	210	240	270	300	330						
0	321	321	321	321	321	321	321	321	321	321	321	321						
5	317	319	320	322	322	322	322	320	319	317	316	317						
10	308	312	315	318	319	319	317	314	311	309	307	307						
15	296	301	305	310	311	311	309	305	300	296	294	294						
20	278	285	291	297	299	299	297	291	285	279	277	276						
25	258	266	273	280	283	283	280	273	266	259	257	255						
30	233	244	251	260	263	264	260	251	244	235	232	230						
35	206	217	226	236	240	240	235	226	218	208	205	202						
40	177	189	198	209	213	213	208	198	190	180	178	174						
45	149	160	169	179	183	184	179	170	161	152	149	147						
50	124	132	141	150	154	154	151	142	134	125	122	121						
55	100.0	107	115	123	127	127	124	115	107	99.9	96.9	96.8						
60	77.7	84.3	92.1	99.4	102	103	98.7	90.4	83.0	76.4	73.9	74.4						
65	57.7	64.0	71.2	77.8	79.9	79.9	75.8	68.0	61.1	55.2	53.3	54.3						
70	40.0	45.9	52.7	58.7	60.2	59.7	55.3	48.0	41.7	36.5	35.2	36.6						
75	24.7	30.1	36.4	42.1	43.0	41.7	37.2	30.6	25.0	20.6	19.9	21.4						
80	12.3	16.5	22.2	27.6	27.9	25.9	21.8	16.2	11.6	8.26	7.96	9.30						
85	3.14	6.03	10.2	15.2	14.8	12.5	9.47	5.41	2.17	0.20	0.14	1.04						
90	0.18	0.23	0.65	2.54	2.56	1.21	1.04	0.11	0.13	0.16	0.16	0.16						
95	0.27	0.23	0.20	0.17	0.17	0.17	0.15	0.18	0.21	0.25	0.26	0.25						
100	0.39	0.34	0.30	0.27	0.26	0.26	0.24	0.28	0.32	0.36	0.37	0.36						
105	0.52	0.47	0.43	0.39	0.38	0.37	0.35	0.40	0.44	0.49	0.50	0.49						
110	0.67	0.61	0.57	0.52	0.51	0.51	0.47	0.54	0.57	0.63	0.65	0.64						
115	0.82	0.77	0.72	0.68	0.65	0.65	0.62	0.69	0.73	0.79	0.81	0.79						
120	0.99	0.93	0.88	0.84	0.81	0.81	0.77	0.86	0.88	0.95	0.96	0.95						
125	1.15	1.09	1.05	1.00	0.97	0.97	0.94	1.01	1.05	1.12	1.12	1.11						
130	1.32	1.26	1.21	1.17	1.14	1.13	1.09	1.17	1.22	1.29	1.29	1.27						
135	1.47	1.41	1.38	1.33	1.30	1.29	1.24	1.30	1.38	1.45	1.45	1.42						
140	1.61	1.56	1.53	1.49	1.46	1.46	1.40	1.44	1.52	1.58	1.57	1.56						
145	1.76	1.70	1.67	1.63	1.60	1.59	1.55	1.58	1.62	1.70	1.69	1.70						
150	1.88	1.85	1.80	1.78	1.73	1.74	1.69	1.71	1.75	1.82	1.82	1.83						
155	2.01	1.96	1.93	1.91	1.87	1.87	1.83	1.85	1.87	1.93	1.94	1.96						
160	2.11	2.08	2.04	2.02	2.00	2.00	1.96	1.98	2.00	2.05	2.05	2.06						
165	2.21	2.17	2.15	2.14	2.12	2.13	2.10	2.10	2.12	2.17	2.17	2.18						
170	2.28	2.26	2.27	2.25	2.23	2.25	2.20	2.23	2.22	2.27	2.28	2.27						
175	2.34	2.35	2.36	2.34	2.33	2.35	2.30	2.32	2.32	2.34	2.36	2.35						
180	2.37	2.38	2.38	2.38	2.39	2.39	2.38	2.38	2.39	2.38	2.40	2.39						

C Range: 0 - 360DEG
 C Interval: 30.0DEG
 Test Speed: HIGH
 Temperature:25.3DEG
 Operators:
 Test Date:2021-12-23

g Range: 0 - 180DEG
 g Interval: 1.0DEG
 Test System:EVERFINE GO-2000B_V1 SYSTEM V2.00.426
 Humidity:65.0%
 Test Distance:8.000m [K=1.0000]
 Remarks: