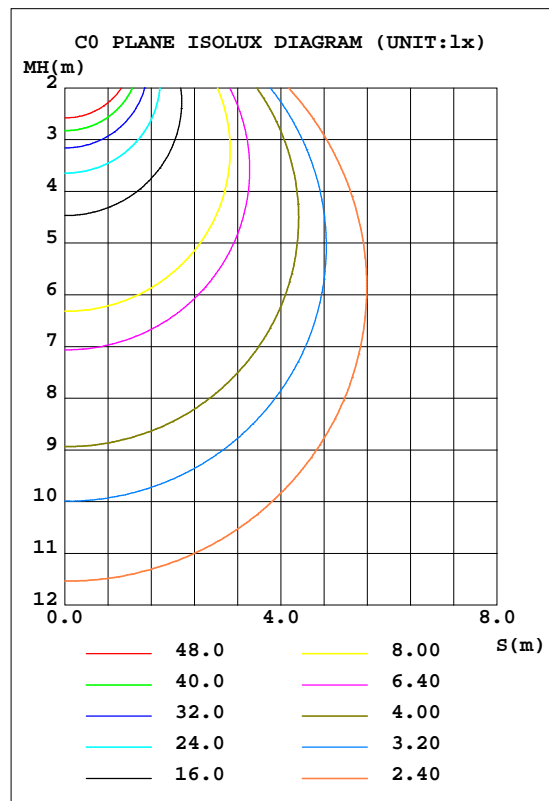
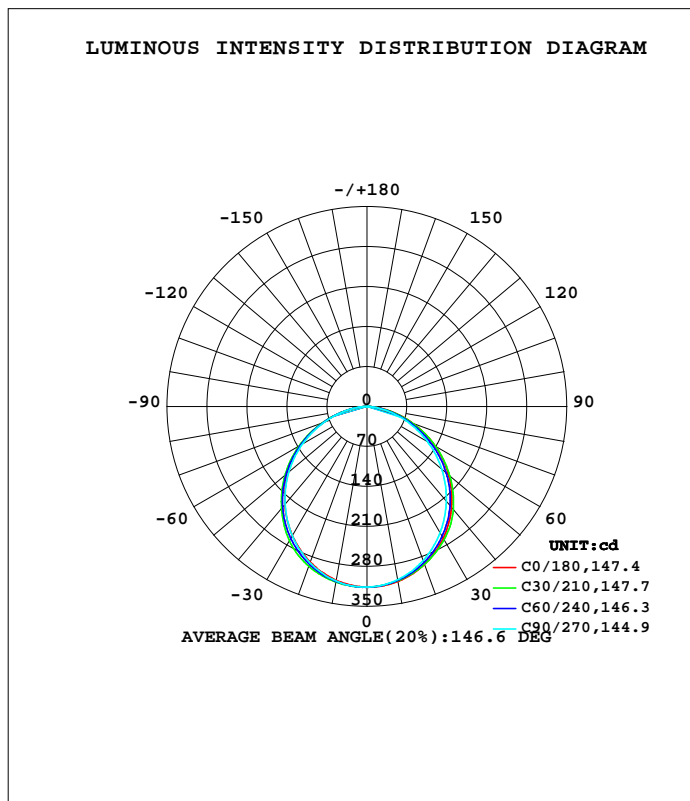


LUMINAIRE PHOTOMETRIC TEST REPORT

Test:U:120.04V I:0.1107A P:12.597W PF:0.9483 Freq:59.98Hz Lamp Flux:874.696x1 lm		
NAME: ASD-UCL-24D12CC-4000K	TYPE:	WEIGHT:
SPEC.:12W	DIM.:	SERIAL No.:
MFR.: ASD Lighting Corp	SUR.:	Shielding Angle:

DATA OF LAMP		PHOTOMETRIC DATA			
MODEL	ASD-UCL-24D12CC-4000K	Imax(cd)	316.5	S/MH(C0/180)	1.23
NOMINAL POWER(W)	12	LOR(%)	100.0	S/MH(C90/270)	1.23
RATED VOLTAGE(V)	120	TOTAL FLUX(lm)	874.70	h UP, DN(C0-180)	0.3,49.3
NOMINAL FLUX(lm)	874.696	CIE CLASS	DIRECT	h UP, DN(C180-360)	0.2,50.3
LAMPS INSIDE	1	h up(%)	0.5	CIBSE SHR NOM	1.25
TEST VOLTAGE(V)	120	h down(%)	99.5	CIBSE SHR MAX	1.35



C Range: 0 - 360DEG
 C Interval: 15.0DEG
 Test Speed: MEDIUM
 Temperature:25.3DEG
 Operators:
 Test Date:10 March 2021

g Range: 0 - 180DEG
 g Interval: 0.5DEG
 Test System:EVERFINE GO-SPEX500_V1 SYSTEM V2.0.402
 Humidity:65.0%
 Test Distance:3.010m [K=1.0000]
 Remarks:

ZONAL FLUX DIAGRAM

ZONAL FLUX DIAGRAM:

g	C0	C45	C90	C135	C180	C225	C270	C315	g	F zone	F total	%lum,lamp
10	311.1	309.6	308.1	308.2	309.0	312.0	310.5	311.5	0- 10	29.89	29.89	3.42,3.42
20	294.3	292.7	287.3	287.8	290.0	296.6	291.6	293.9	10- 20	85.29	115.2	13.2,13.2
30	266.7	266.8	255.8	257.4	261.3	270.8	261.7	265.2	20- 30	128.4	243.6	27.8,27.8
40	230.5	232.8	216.4	219.1	224.1	234.4	223.2	227.8	30- 40	153.4	397.0	45.4,45.4
50	186.9	189.4	171.3	175.2	180.7	187.5	178.9	183.4	40- 50	157.4	554.4	63.4,63.4
60	137.6	137.7	122.3	126.4	131.9	135.8	129.6	133.9	50- 60	140.2	694.6	79.4,79.4
70	84.40	83.28	72.58	75.40	80.05	82.18	78.54	81.72	60- 70	104.4	799.0	91.3,91.3
80	34.81	32.19	26.07	28.13	31.11	31.99	30.84	33.31	70- 80	57.65	856.7	97.9,97.9
90	0.7553	0.6268	0.2415	0.5987	0.3924	0.5708	0.2930	0.6012	80- 90	13.95	870.6	99.5,99.5
100	0.4459	0.4393	0.4124	0.4412	0.3412	0.3370	0.3002	0.3198	90-100	0.3604	871.0	99.6,99.6
110	0.6880	0.6762	0.6690	0.6691	0.5550	0.5078	0.4897	0.4767	100-110	0.5112	871.5	99.6,99.6
120	0.8877	0.8652	0.8418	0.8338	0.7211	0.6421	0.6095	0.6069	110-120	0.6624	872.1	99.7,99.7
130	0.9696	0.9546	0.9658	0.9001	0.7583	0.7318	0.7238	0.6829	120-130	0.7090	872.9	99.8,99.8
140	0.9344	0.9882	0.9787	0.9522	0.7174	0.7809	0.8206	0.7156	130-140	0.6514	873.5	99.9,99.9
150	0.8804	1.047	1.006	0.9843	0.6454	0.6745	0.8957	0.6490	140-150	0.5339	874.0	99.9,99.9
160	0.8386	0.9010	1.002	0.8345	0.5808	0.6537	0.6783	0.6277	150-160	0.3782	874.4	100,100
170	0.7938	0.8591	0.7942	0.7494	0.6480	0.6914	0.7254	0.6580	160-170	0.2108	874.6	100,100
180	0.7576	0.7932	0.7212	0.7484	0.7600	0.7941	0.7221	0.7484	170-180	0.0703	874.7	100,100
DEG	LUMINOUS INTENSITY:cd									UNIT:lm		

C Range: 0 - 360DEG
 C Interval: 15.0DEG
 Test Speed: MEDIUM
 Temperature:25.3DEG
 Operators:
 Test Date:10 March 2021

g Range: 0 - 180DEG
 g Interval: 0.5DEG
 Test System:EVERFINE GO-SPEX500_V1 SYSTEM V2.0.402
 Humidity:65.0%
 Test Distance:3.010m [K=1.0000]
 Remarks:

UGR(Unified Glare Rating) Table

Test:U:120.04V I:0.1107A P:12.597W PF:0.9483 Freq:59.98Hz Lamp Flux:874.696x1 lm										
NAME: ASD-UCL-24D12CC-4000K					TYPE:			WEIGHT:		
SPEC.:12W					DIM.:			SERIAL No.:		
MFR.: ASD Lighting Corp					SUR.:			Shielding Angle:		
ceiling/cavity	0.7	0.7	0.5	0.5	0.3	0.7	0.7	0.5	0.5	0.3
walls	0.5	0.3	0.5	0.3	0.3	0.5	0.3	0.5	0.3	0.3
working plane	0.2	0.2	0.2	0.2	0.2	0.2	0.2	0.2	0.2	0.2
Room dimensions	Viewed crosswise					Viewed endwise				
x = 2H y = 2H	11.0	12.5	11.2	12.7	12.9	10.5	12.0	10.8	12.2	12.4
3H	12.5	13.9	12.8	14.1	14.4	11.8	13.2	12.2	13.5	13.7
4H	13.1	14.4	13.4	14.6	14.9	12.3	13.7	12.7	13.9	14.2
6H	13.5	14.7	13.8	15.0	15.3	12.6	13.9	13.0	14.2	14.5
8H	13.6	14.8	14.0	15.1	15.4	12.7	13.9	13.1	14.2	14.5
12H	13.7	14.8	14.0	15.1	15.4	12.7	13.9	13.1	14.2	14.5
4H 2H	11.5	12.8	11.8	13.1	13.3	11.1	12.4	11.4	12.7	13.0
3H	13.2	14.3	13.5	14.6	15.0	12.7	13.8	13.0	14.1	14.4
4H	13.9	15.0	14.3	15.3	15.6	13.3	14.3	13.7	14.7	15.0
6H	14.4	15.4	14.8	15.7	16.1	13.7	14.6	14.1	15.0	15.3
8H	14.6	15.5	15.0	15.9	16.3	13.8	14.7	14.2	15.0	15.4
12H	14.7	15.5	15.2	15.9	16.3	13.8	14.6	14.3	15.0	15.4
8H 4H	14.1	15.0	14.5	15.4	15.7	13.5	14.4	14.0	14.8	15.2
6H	14.8	15.5	15.2	15.9	16.3	14.1	14.8	14.5	15.2	15.6
8H	15.0	15.7	15.5	16.1	16.6	14.2	14.9	14.7	15.3	15.8
12H	15.2	15.8	15.7	16.2	16.7	14.3	14.9	14.8	15.3	15.8
12H 4H	14.1	14.9	14.5	15.3	15.7	13.5	14.3	14.0	14.7	15.2
6H	14.8	15.4	15.3	15.9	16.3	14.1	14.8	14.6	15.2	15.7
8H	15.1	15.6	15.6	16.1	16.6	14.3	14.9	14.8	15.3	15.8
Variations with the observer position at spacings:										
S = 1.0H	+ 0.2 / - 0.2					+ 0.2 / - 0.2				
1.5H	+ 0.2 / - 0.3					+ 0.2 / - 0.4				
2.0H	+ 0.2 / - 0.3					+ 0.2 / - 0.3				

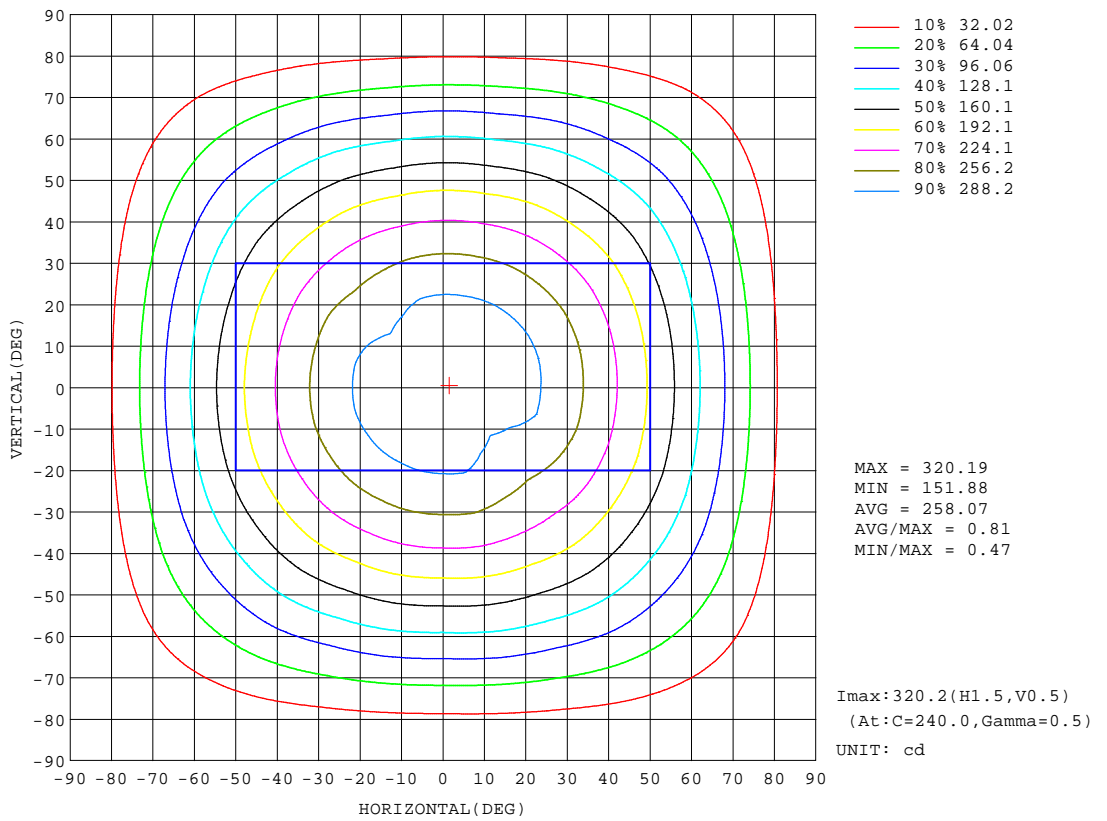
CIE Pub.117, 874.7 lm Total Lamp Luminous Flux Corrected (8log(F/F0) = -0.5)

C Range: 0 - 360DEG
 C Interval: 15.0DEG
 Test Speed: MEDIUM
 Temperature:25.3DEG
 Operators:
 Test Date:10 March 2021

g Range: 0 - 180DEG
 g Interval: 0.5DEG
 Test System:EVERFINE GO-SPEX500_V1 SYSTEM V2.0.402
 Humidity:65.0%
 Test Distance:3.010m [K=1.0000]
 Remarks:

ISOCANDELA DIAGRAM

Test:U:120.04V I:0.1107A P:12.597W PF:0.9483 Freq:59.98Hz Lamp Flux:874.696x1 lm		
NAME: ASD-UCL-24D12CC-4000K	TYPE:	WEIGHT:
SPEC.:12W	DIM.:	SERIAL No.:
MFR.: ASD Lighting Corp	SUR.:	Shielding Angle:



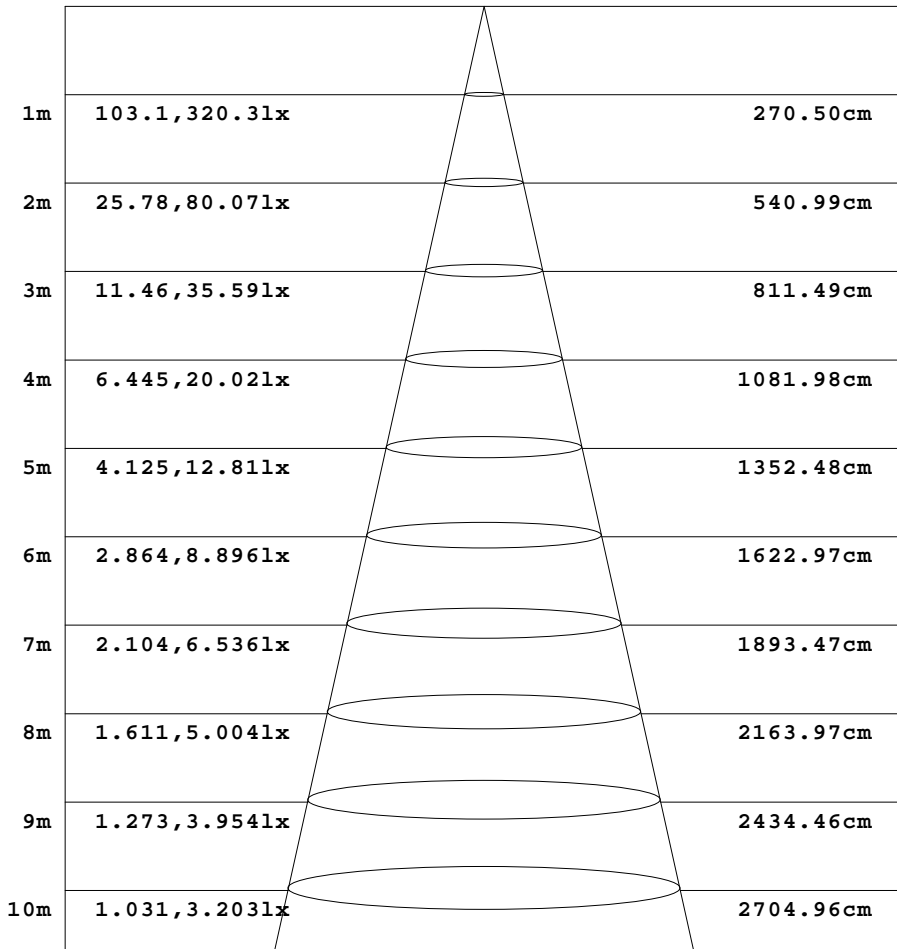
C Range: 0 - 360DEG
 C Interval: 15.0DEG
 Test Speed: MEDIUM
 Temperature:25.3DEG
 Operators:
 Test Date:10 March 2021

g Range: 0 - 180DEG
 g Interval: 0.5DEG
 Test System:EVERFINE GO-SPEX500_V1 SYSTEM V2.0.402
 Humidity:65.0%
 Test Distance:3.010m [K=1.0000]
 Remarks:

AAI Figure

Test:U:120.04V I:0.1107A P:12.597W PF:0.9483 Freq:59.98Hz Lamp Flux:874.696x1 lm		
NAME: ASD-UCL-24D12CC-4000K	TYPE:	WEIGHT:
SPEC.:12W	DIM.:	SERIAL No.:
MFR.: ASD Lighting Corp	SUR.:	Shielding Angle:

Flux out:613.7 lm



Height Eavg, Emax Angle:107.04deg Diameter

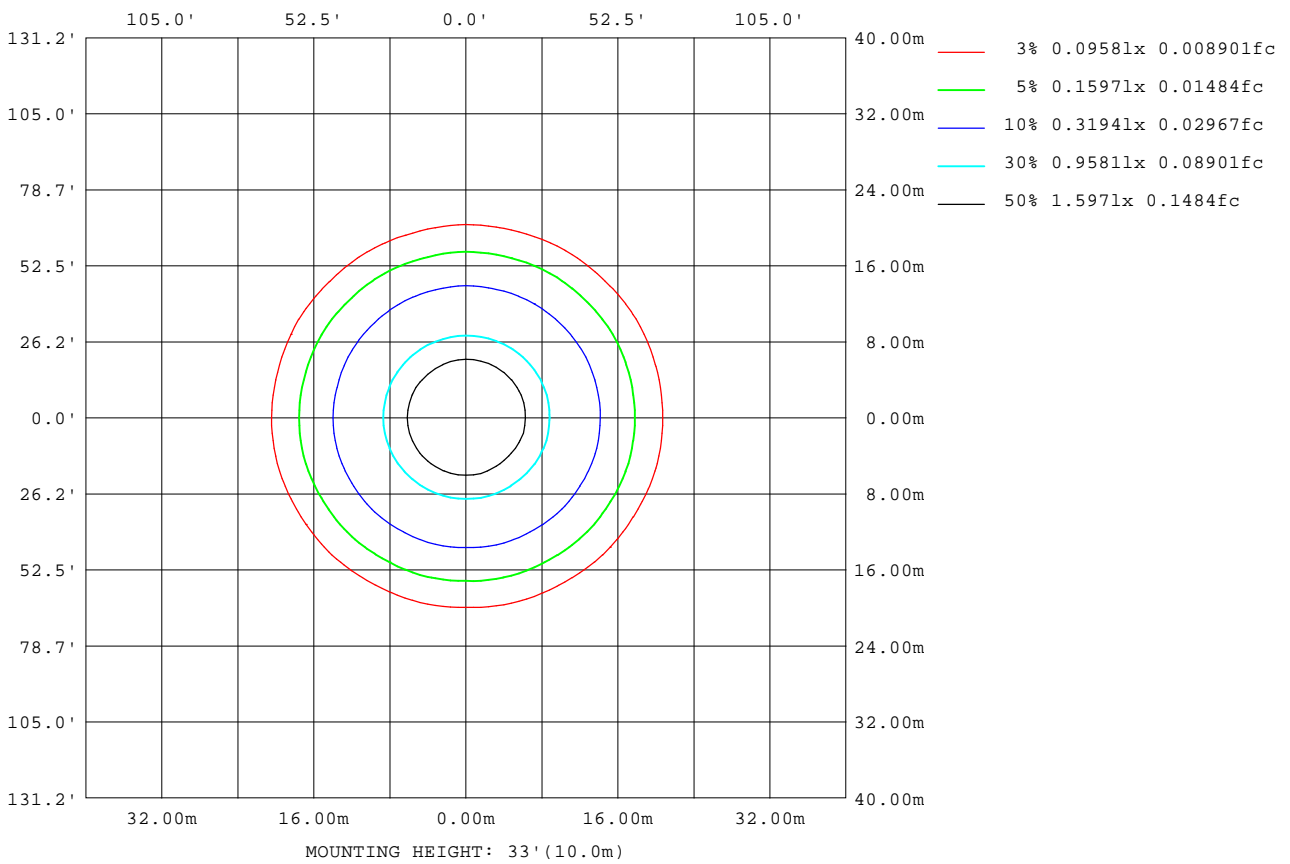
Note:The Curves indicate the illuminated area and the average illumination when the luminaire is at different distance.

C Range: 0 - 360DEG
 C Interval: 15.0DEG
 Test Speed: MEDIUM
 Temperature:25.3DEG
 Operators:
 Test Date:10 March 2021

g Range: 0 - 180DEG
 g Interval: 0.5DEG
 Test System:EVERFINE GO-SPEX500_V1 SYSTEM V2.0.402
 Humidity:65.0%
 Test Distance:3.010m [K=1.0000]
 Remarks:

ISOLUX DIAGRAM

Test:U:120.04V I:0.1107A P:12.597W PF:0.9483 Freq:59.98Hz Lamp Flux:874.696x1 lm		
NAME: ASD-UCL-24D12CC-4000K	TYPE:	WEIGHT:
SPEC.:12W	DIM.:	SERIAL No.:
MFR.: ASD Lighting Corp	SUR.:	Shielding Angle:



C Range: 0 - 360DEG
 C Interval: 15.0DEG
 Test Speed: MEDIUM
 Temperature:25.3DEG
 Operators:
 Test Date:10 March 2021

g Range: 0 - 180DEG
 g Interval: 0.5DEG
 Test System:EVERFINE GO-SPEX500_V1 SYSTEM V2.0.402
 Humidity:65.0%
 Test Distance:3.010m [K=1.0000]
 Remarks:

LED Avg.L Report

Test:U:120.04V I:0.1107A P:12.597W PF:0.9483 Freq:59.98Hz Lamp Flux:874.696x1 lm		
NAME: ASD-UCL-24D12CC-4000K	TYPE:	WEIGHT:
SPEC.:12W	DIM.:	SERIAL No.:
MFR.: ASD Lighting Corp	SUR.:	Shielding Angle:

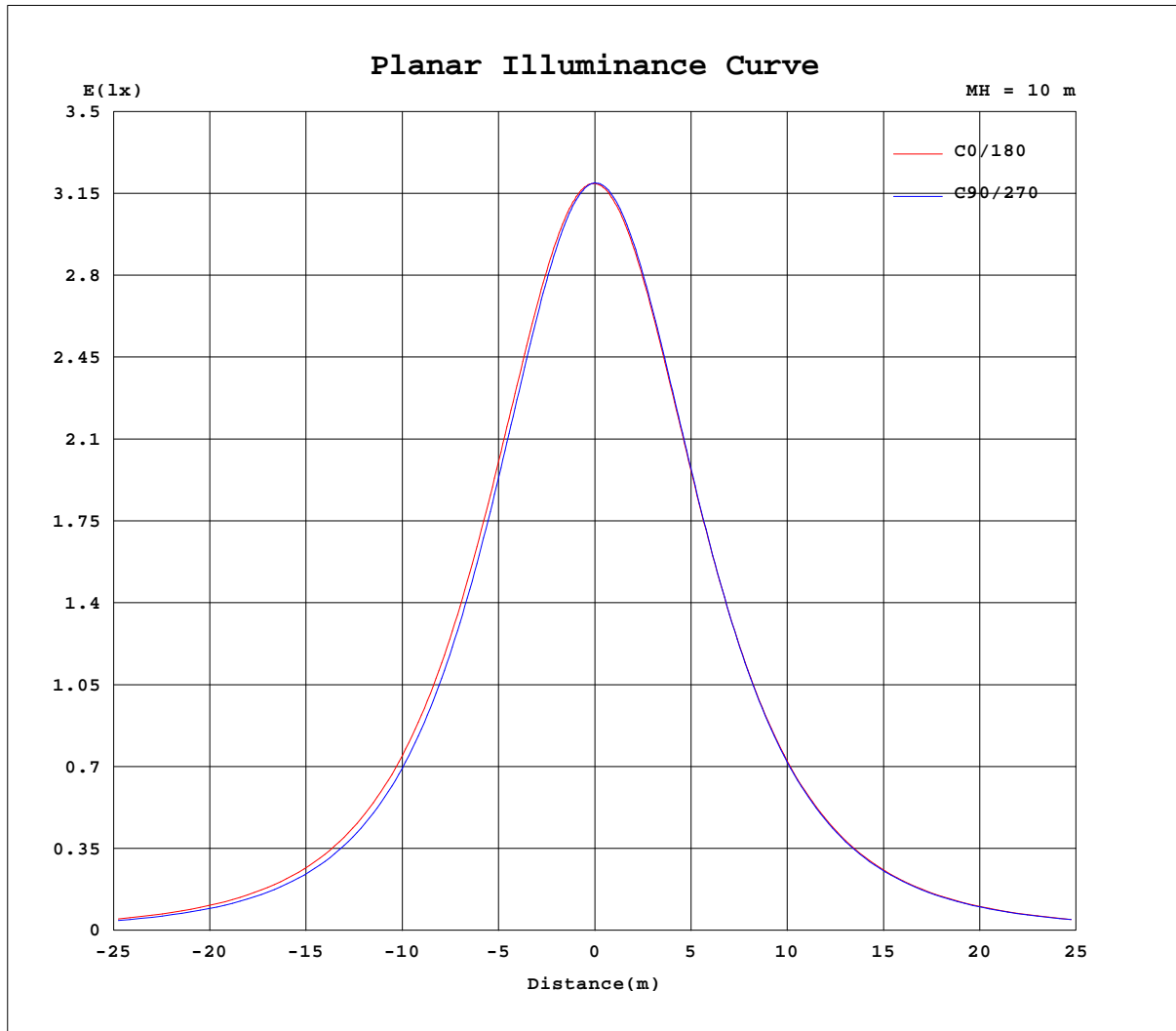
AvgL	cd/m2
L_0~180(65)av	515
L_0~180(75)av	439
L_0~180(85)av	303
L_90~270(65)av	475
L_90~270(75)av	394
L_90~270(85)av	225
L_45(65)av	506
L_45(75)av	426
L_45(85)av	266

Standard: GB/T 29293-2012

C Range: 0 - 360DEG
 C Interval: 15.0DEG
 Test Speed: MEDIUM
 Temperature:25.3DEG
 Operators:
 Test Date:10 March 2021

g Range: 0 - 180DEG
 g Interval: 0.5DEG
 Test System:EVERFINE GO-SPEX500_V1 SYSTEM V2.0.402
 Humidity:65.0%
 Test Distance:3.010m [K=1.0000]
 Remarks:

Planar Illuminance Curve



C Range: 0 - 360DEG
 C Interval: 15.0DEG
 Test Speed: MEDIUM
 Temperature: 25.3DEG
 Operators:
 Test Date: 10 March 2021

g Range: 0 - 180DEG
 g Interval: 0.5DEG
 Test System: EVERFINE GO-SPEX500_V1 SYSTEM V2.0.402
 Humidity: 65.0%
 Test Distance: 3.010m [K=1.0000]
 Remarks:

LUMINOUS DISTRIBUTION INTENSITY DATA

Test:U:120.04V I:0.1107A P:12.597W PF:0.9483 Freq:59.98Hz Lamp Flux:874.696x1 lm		
NAME: ASD-UCL-24D12CC-4000K	TYPE:	WEIGHT:
SPEC.:12W	DIM.:	SERIAL No.:
MFR.: ASD Lighting Corp	SUR.:	Shielding Angle:

Table--1

UNIT: cd

C(DEG) g (DEG)	0	15	30	45	60	75	90	105	120	135	150	165	180	195	210	225	240	255	270
0	316	316	316	316	316	316	316	316	316	316	316	316	316	316	316	316	316	316	316
5	315	315	314	314	314	314	314	314	314	314	314	314	314	315	316	316	315	315	315
10	311	311	310	310	309	309	308	308	308	308	308	309	309	310	312	312	311	310	310
15	304	304	303	302	302	300	299	299	299	299	300	301	301	302	306	306	304	302	302
20	294	295	294	293	291	289	287	287	287	288	288	290	290	291	298	297	294	291	292
25	282	282	283	281	278	274	273	273	273	274	275	276	277	278	286	285	282	277	278
30	267	267	270	267	263	258	256	256	256	257	259	260	261	262	272	271	267	261	262
35	250	250	254	251	246	239	237	237	237	239	241	243	243	244	253	254	250	242	243
40	230	230	235	233	227	219	216	217	217	219	221	223	224	225	233	234	230	222	223
45	210	209	213	213	205	197	194	195	195	198	199	202	203	203	211	212	208	200	202
50	187	187	189	189	181	174	171	172	172	175	176	180	181	180	188	188	185	177	179
55	163	163	164	164	156	150	147	148	148	151	152	156	157	156	163	162	160	153	155
60	138	138	138	138	130	125	122	123	123	126	127	131	132	131	137	136	134	128	130
65	111	112	111	111	104	99.8	96.9	98.2	97.7	101	102	105	106	105	110	109	107	102	104
70	84.4	84.9	84.3	83.3	78.4	74.4	72.6	73.0	73.3	75.4	76.7	79.1	80.1	79.9	82.8	82.2	80.9	77.5	78.5
75	59.1	58.7	58.0	56.7	52.7	49.8	48.2	48.6	48.8	50.8	51.7	53.7	54.5	54.3	56.5	56.0	55.1	52.7	53.7
80	34.8	34.5	33.4	32.2	29.3	27.4	26.1	26.4	26.5	28.1	28.9	30.6	31.1	31.0	32.5	32.0	31.6	30.0	30.8
85	14.4	14.2	12.4	11.7	9.69	9.01	8.20	8.44	8.56	9.63	10.2	11.6	12.0	11.8	12.6	11.9	11.8	10.8	11.4
90	0.76	0.58	0.50	0.63	0.45	0.22	0.24	0.24	0.49	0.60	0.49	0.47	0.39	0.64	0.55	0.57	0.43	0.30	0.29
95	0.35	0.33	0.33	0.32	0.31	0.29	0.29	0.30	0.32	0.33	0.35	0.36	0.24	0.24	0.27	0.27	0.24	0.24	0.28
100	0.45	0.43	0.44	0.44	0.42	0.40	0.41	0.41	0.43	0.44	0.46	0.46	0.34	0.33	0.33	0.34	0.31	0.32	0.30
105	0.56	0.55	0.56	0.57	0.56	0.53	0.55	0.55	0.55	0.56	0.57	0.58	0.45	0.44	0.43	0.43	0.41	0.40	0.40
110	0.69	0.66	0.68	0.68	0.67	0.66	0.67	0.67	0.67	0.67	0.68	0.69	0.55	0.52	0.52	0.51	0.51	0.49	0.49
115	0.79	0.76	0.79	0.79	0.76	0.75	0.76	0.76	0.76	0.76	0.77	0.78	0.64	0.60	0.60	0.58	0.56	0.54	0.56
120	0.89	0.86	0.87	0.87	0.86	0.83	0.84	0.83	0.84	0.83	0.85	0.87	0.72	0.68	0.67	0.64	0.62	0.60	0.61
125	0.94	0.91	0.92	0.91	0.91	0.90	0.92	0.90	0.89	0.87	0.89	0.92	0.76	0.71	0.71	0.69	0.65	0.64	0.67
130	0.97	0.95	0.96	0.95	0.94	0.95	0.97	0.94	0.92	0.90	0.93	0.94	0.76	0.73	0.75	0.73	0.71	0.72	0.72
135	0.96	0.93	0.97	0.97	0.96	0.96	0.99	0.95	0.93	0.93	0.95	0.92	0.76	0.72	0.74	0.75	0.75	0.75	0.77
140	0.93	0.91	0.99	0.99	0.97	0.95	0.98	0.93	0.94	0.95	0.96	0.90	0.72	0.70	0.71	0.78	0.75	0.78	0.82
145	0.91	0.90	0.99	1.03	0.98	0.98	0.99	0.95	0.96	0.99	0.95	0.89	0.68	0.69	0.69	0.77	0.82	0.81	0.84
150	0.88	0.90	0.95	1.05	1.04	1.02	1.01	0.98	1.00	0.98	0.90	0.88	0.65	0.65	0.67	0.67	0.79	0.87	0.90
155	0.86	0.89	0.91	0.99	1.04	1.09	1.08	1.04	0.97	0.93	0.86	0.86	0.61	0.63	0.67	0.66	0.66	0.73	0.79
160	0.84	0.88	0.88	0.90	0.97	1.01	1.00	0.97	0.91	0.83	0.81	0.83	0.58	0.60	0.64	0.65	0.67	0.67	0.68
165	0.79	0.82	0.86	0.87	0.87	0.87	0.87	0.84	0.81	0.77	0.76	0.76	0.57	0.58	0.61	0.68	0.70	0.68	0.68
170	0.79	0.83	0.87	0.86	0.83	0.80	0.79	0.77	0.77	0.75	0.75	0.75	0.65	0.63	0.65	0.69	0.71	0.70	0.73
175	0.78	0.81	0.84	0.85	0.80	0.78	0.77	0.76	0.76	0.75	0.72	0.72	0.68	0.67	0.68	0.72	0.72	0.70	0.69
180	0.76	0.76	0.78	0.79	0.76	0.73	0.72	0.69	0.70	0.75	0.74	0.72	0.76	0.76	0.78	0.79	0.76	0.73	0.72

C Range: 0 - 360DEG

C Interval: 15.0DEG

Test Speed: MEDIUM

Temperature:25.3DEG

Operators:

Test Date:10 March 2021

g Range: 0 - 180DEG

g Interval: 0.5DEG

Test System:EVERFINE GO-SPEX500_V1 SYSTEM V2.0.402

Humidity:65.0%

Test Distance:3.010m [K=1.0000]

Remarks:

