



LED OUTDOOR WALL SCNCE

OLWS-21 series

► **DESIGN** - LED OUTDOOR WALL SCNCE has a modern, multipurpose design and a stylish look with efficient lighting. The UV resistant PMMA lens with a 120° beam angle grants you even light distribution. It is designed to operate on 120V or 120-277V circuits and provides smooth triac dimming capabilities ranging from 10% to 100%.

► **MOTION SENSOR** - The built-in infrared motion sensor will turn off the fixture automatically when no motion is detected. Installation height 3-6ft. Detection range up to 26ft, Holdtime 60 sec, Light Threshold 60-300 lux

► **COLOR SELECTABLE** - You can choose either a 3,000K warm white, 4,000K cool white or 5,000K daylight color temperature.

► **RGBW** - The fixture has RGBW design with APP control. You can easily select Red, Green, Blue, White (2,700K-6,500K) colors or its' combinations, having 16.7 million colors in total. You can also choose lighting patterns and set up a schedule, having a great variety of good looking effects. All of it is easily controlled by Smart APP on your Smartphone. The fixture is also compatible with Alexa and Google Assistant.

► **DURABLE WATERPROOF** - Housing resistant to rust and impact can be used outdoors in all weather conditions.

► **APPLICATION** - The fixture is rated for Wet Locations, making it perfect for indoor and outdoor projects such as decks, front doors, porches, patios, corridors, walkways, or any other common areas.

► **ADVANTAGES** - With a lifespan of 50,000 hours, these fixtures are made to last decades under normal operation! ASD provides a 5-year limited warranty along with ETL and Energy Star certifications to guarantee top quality products and safety!

Catalog number	
Notes	
Type	



PRODUCT PRESENTATION:

Model	Size	Power	Voltage	Dimmable	Lumens	CCT	Finish	Dimensions	Pre-installed	Certification
OLWS-21										
ASD-OLWS-21-D15CC-NK	10 inch	15W	120 V	TRIAC	1,098 lm	3CCT (3,000/4,000/5,000 K)	Nickel	7" x 3-1/4" x 9-15/16"	-	ETL
ASD-OLWS-21-10D15CC-NK-2PACK	10 inch	15W	120 V	TRIAC	1,098 lm	3CCT (3,000/4,000/5,000 K)	Nickel	7" x 3-1/4" x 9-15/16"	-	ETL
ASD-OLWS-21-D15CC-BZ	10 inch	15W	120 V	TRIAC	1,098 lm	3CCT (3,000/4,000/5,000 K)	Bronze	7" x 3-1/4" x 9-15/16"	-	ETL
ASD-OLWS-21-10D15CC-BZ-2PACK	10 inch	15W	120 V	TRIAC	1,098 lm	3CCT (3,000/4,000/5,000 K)	Bronze	7" x 3-1/4" x 9-15/16"	-	ETL
ASD-OLWS-21-MV-10D15CC-NK	10 inch	15W	120-277 V	TRIAC	1,361 lm	3CCT (3,000/4,000/5,000 K)	Nickel	7" x 3-1/4" x 10"	-	ETL
ASD-OLWS-21-MV-10D15CC-BZ	10 inch	15W	120-277 V	TRIAC	1,361 lm	3CCT (3,000/4,000/5,000 K)	Bronze	7" x 3-1/4" x 10"	-	ETL
ASD-OLWS-21-MV-10D15CC-BK	10 inch	15W	120-277 V	TRIAC	1,361 lm	3CCT (3,000/4,000/5,000 K)	Black	7" x 3-1/4" x 10"	-	ETL
ASD-OLWS-21-MV-18D20CC-NK	18 inch	20W	120-277 V	TRIAC	2,457 lm	3CCT (3,000/4,000/5,000 K)	Nickel	7" x 3-1/4" x 17-15/16"	-	ETL
ASD-OLWS-21-MV-18D20CC-BZ	18 inch	20W	120-277 V	TRIAC	2,457 lm	3CCT (3,000/4,000/5,000 K)	Bronze	7" x 3-1/4" x 17-15/16"	-	ETL
ASD-OLWS-21-MV-18D20CC-BK	18 inch	20W	120-277 V	TRIAC	2,457 lm	3CCT (3,000/4,000/5,000 K)	Black	7" x 3-1/4" x 17-15/16"	-	ETL
ASD-OLWS-21-MV-24D25CC-NK	24 inch	25W	120-277 V	TRIAC	3,017 lm	3CCT (3,000/4,000/5,000 K)	Nickel	7" x 3-1/4" x 23-13/16"	-	ETL
ASD-OLWS-21-MV-24D25CC-BZ	24 inch	25W	120-277 V	TRIAC	3,017 lm	3CCT (3,000/4,000/5,000 K)	Bronze	7" x 3-1/4" x 23-13/16"	-	ETL
ASD-OLWS-21-MV-24D25CC-BK	24 inch	25W	120-277 V	TRIAC	3,017 lm	3CCT (3,000/4,000/5,000 K)	Black	7" x 3-1/4" x 23-13/16"	-	ETL
ASD-OLWS-21-MV-36D30CC-NK	36 inch	30W	120-277 V	TRIAC	3,268 lm	3CCT (3,000/4,000/5,000 K)	Nickel	7" x 3-1/4" x 36"	-	ETL
ASD-OLWS-21-MV-36D30CC-BK	36 inch	30W	120-277 V	TRIAC	3,268 lm	3CCT (3,000/4,000/5,000 K)	Black	7" x 3-1/4" x 36"	-	ETL
OLWS-21GR WITH GRID										
ASD-OLWS-21GR-MV-24D25NK	24 inch	25W	120-277 V	TRIAC	2,183 lm	3CCT (3,000/4,000/5,000 K)	Nickel	6-1/2" x 3" x 23-11/16"	-	ETL
ASD-OLWS-21GR-MV-24D25BK	24 inch	25W	120-277 V	TRIAC	2,183 lm	3CCT (3,000/4,000/5,000 K)	Black	6-1/2" x 3" x 23-11/16"	-	ETL
ASD-OLWS-21GR-MV-36D30NK	36 inch	30W	120-277 V	TRIAC	2,465 lm	3CCT (3,000/4,000/5,000 K)	Nickel	6-1/2" x 3" x 35-7/8"	-	ETL
ASD-OLWS-21GR-MV-36D30BK	36 inch	30W	120-277 V	TRIAC	2,465 lm	3CCT (3,000/4,000/5,000 K)	Black	6-1/2" x 3" x 35-7/8"	-	ETL
OLWS-21-RGBW										
ASD-OLWS-21-MV-10D15SM-RGBW-NK	10 inch	15W	120-277 V	SMART APP	1,188 lm	Red-Green-Blue-2,700K-6,500 K	Nickel	7" x 3-1/4" x 10"	-	ETL
ASD-OLWS-21-MV-10D15SM-RGBW-BK	10 inch	15W	120-277 V	SMART APP	1,188 lm	Red-Green-Blue-2,700K-6,500 K	Black	7" x 3-1/4" x 10"	-	ETL
ASD-OLWS-21-MV-24D25SM-RGBW-NK	24 inch	23W	120-277 V	SMART APP	2,274 lm	Red-Green-Blue-2,700K-6,500 K	Nickel	7" x 3-1/4" x 23-13/16"	-	ETL
ASD-OLWS-21-MV-24D25SM-RGBW-BK	24 inch	23W	120-277 V	SMART APP	2,274 lm	Red-Green-Blue-2,700K-6,500 K	Black	7" x 3-1/4" x 23-13/16"	-	ETL
OLWS-21-MS WITH MOTION SENSOR										
ASD-OLWS-21-10N15NK-MS	10 inch	15W	120-277 V	-	1,172 lm	3CCT (3,000/4,000/5,000 K)	Nickel	7" x 3-9/16" x 9-15/16"	Motion sensor	ETL
ASD-OLWS-21-10N15BK-MS	10 inch	15W	120-277 V	-	1,172 lm	3CCT (3,000/4,000/5,000 K)	Black	7" x 3-9/16" x 9-15/16"	Motion sensor	ETL
ASD-OLWS-21-18N20NK-MS	18 inch	20W	120-277 V	-	2,002 lm	3CCT (3,000/4,000/5,000 K)	Nickel	7" x 3-9/16" x 17-15/16"	Motion sensor	ETL
ASD-OLWS-21-18N20BK-MS	18 inch	20W	120-277 V	-	2,002 lm	3CCT (3,000/4,000/5,000 K)	Black	7" x 3-9/16" x 17-15/16"	Motion sensor	ETL

For most up-to-date spec sheets please refer to asd-lighting.com



LED OUTDOOR WALL SCNCE

OLWS-21 series

Model	Size	Power	Voltage	Dimmable	Lumens	CCT	Finish	Dimensions	Pre-installed	Certification
OLWS-21-PC WITH PHOTOCELL										
ASD-OLWS-21-N15CC-PC-NK	10 inch	15W	120 V	-	1,098 lm	3CCT (3,000/4,000/5,000 K)	Nickel	7" x 3-1/4" x 10-7/16"	Photocell	ETL
ASD-OLWS-21-10N15CC-PC-NK-2PACK	10 inch	15W	120 V	-	1,098 lm	3CCT (3,000/4,000/5,000 K)	Nickel	7" x 3-1/4" x 10-7/16"	Photocell	ETL
ASD-OLWS-21-N15CC-PC-BZ	10 inch	15W	120 V	-	1,098 lm	3CCT (3,000/4,000/5,000 K)	Bronze	7" x 3-1/4" x 10-7/16"	Photocell	ETL
ASD-OLWS-21-10N15CC-PC-BZ-2PACK	10 inch	15W	120 V	-	1,098 lm	3CCT (3,000/4,000/5,000 K)	Bronze	7" x 3-1/4" x 10-7/16"	Photocell	ETL
ASD-OLWS-21-MV-10N15NK-PC	10 inch	15W	120-277 V	-	1,281 lm	3CCT (3,000/4,000/5,000 K)	Nickel	7" x 3-1/4" x 10-7/16"	Photocell	ETL
ASD-OLWS-21-MV-10N15BK-PC	10 inch	15W	120-277 V	-	1,281 lm	3CCT (3,000/4,000/5,000 K)	Black	7" x 3-1/4" x 10-7/16"	Photocell	ETL

TECHNICAL PARAMETERS:

Application area	Series	Model	Work environment	Operating temperature	Power factor	Housing	Lens	CRI
RESIDENTIAL	OLWS-21	OLWS-21						
		ASD-OLWS-21-D15CC-NK	Wet locations	-40°F to 113°F (-40°C to 45°C)	> 0,9	Aluminum	PMMA	> 80
		ASD-OLWS-21-10D15CC-NK-2PACK	Wet locations	-40°F to 113°F (-40°C to 45°C)	> 0,9	Aluminum	PMMA	> 80
		ASD-OLWS-21-D15CC-BZ	Wet locations	-40°F to 113°F (-40°C to 45°C)	> 0,9	Aluminum	PMMA	> 80
		ASD-OLWS-21-10D15CC-BZ-2PACK	Wet locations	-40°F to 113°F (-40°C to 45°C)	> 0,9	Aluminum	PMMA	> 80
		ASD-OLWS-21-MV-10D15CC-NK	Wet locations	-40°F to 113°F (-40°C to 45°C)	> 0,9	Steel	Acrylic	> 80
		ASD-OLWS-21-MV-10D15CC-BZ	Wet locations	-40°F to 113°F (-40°C to 45°C)	> 0,9	Steel	Acrylic	> 80
		ASD-OLWS-21-MV-10D15CC-BK	Wet locations	-40°F to 113°F (-40°C to 45°C)	> 0,9	Steel	Acrylic	> 80
		ASD-OLWS-21-MV-18D20CC-NK	Wet locations	-40°F to 113°F (-40°C to 45°C)	> 0,9	Steel	Acrylic	> 80
		ASD-OLWS-21-MV-18D20CC-BZ	Wet locations	-40°F to 113°F (-40°C to 45°C)	> 0,9	Steel	Acrylic	> 80
		ASD-OLWS-21-MV-18D20CC-BK	Wet locations	-40°F to 113°F (-40°C to 45°C)	> 0,9	Steel	Acrylic	> 80
		ASD-OLWS-21-MV-24D25CC-NK	Wet locations	-40°F to 113°F (-40°C to 45°C)	> 0,9	Steel	Acrylic	> 80
		ASD-OLWS-21-MV-24D25CC-BZ	Wet locations	-40°F to 113°F (-40°C to 45°C)	> 0,9	Steel	Acrylic	> 80
		ASD-OLWS-21-MV-24D25CC-BK	Wet locations	-40°F to 113°F (-40°C to 45°C)	> 0,9	Steel	Acrylic	> 80
		ASD-OLWS-21-MV-36D30CC-NK	Wet locations	-40°F to 113°F (-40°C to 45°C)	> 0,9	Steel	Acrylic	> 80
		ASD-OLWS-21-MV-36D30CC-BK	Wet locations	-40°F to 113°F (-40°C to 45°C)	> 0,9	Steel	Acrylic	> 80
		OLWS-21GR WITH GRID						
		ASD-OLWS-21GR-MV-24D25NK	Wet locations	-40°F to 113°F (-40°C to 45°C)	> 0,9	Steel	Acrylic	> 80
		ASD-OLWS-21GR-MV-24D25BK	Wet locations	-40°F to 113°F (-40°C to 45°C)	> 0,9	Steel	Acrylic	> 80
		ASD-OLWS-21GR-MV-36D30NK	Wet locations	-40°F to 113°F (-40°C to 45°C)	> 0,9	Steel	Acrylic	> 80
		ASD-OLWS-21GR-MV-36D30BK	Wet locations	-40°F to 113°F (-40°C to 45°C)	> 0,9	Steel	Acrylic	> 80
		OLWS-21-RGBW						
		ASD-OLWS-21-MV-10D15SM-RGBW-NK	Wet locations	-40°F to 113°F (-40°C to 45°C)	> 0,9	Steel	Acrylic	> 80
		ASD-OLWS-21-MV-10D15SM-RGBW-BK	Wet locations	-40°F to 113°F (-40°C to 45°C)	> 0,9	Steel	Acrylic	> 80
		ASD-OLWS-21-MV-24D23SM-RGBW-NK	Wet locations	-40°F to 113°F (-40°C to 45°C)	> 0,9	Steel	Acrylic	> 80
		ASD-OLWS-21-MV-24D23SM-RGBW-BK	Wet locations	-40°F to 113°F (-40°C to 45°C)	> 0,9	Steel	Acrylic	> 80
		OLWS-21-MS WITH MOTION SENSOR						
		ASD-OLWS-21-10N15NK-MS	Wet locations	-40°F to 113°F (-40°C to 45°C)	> 0,9	Aluminum	PMMA	> 80
		ASD-OLWS-21-10N15BK-MS	Wet locations	-40°F to 113°F (-40°C to 45°C)	> 0,9	Aluminum	PMMA	> 80
		ASD-OLWS-21-18N20NK-MS	Wet locations	-40°F to 113°F (-40°C to 45°C)	> 0,9	Aluminum	PMMA	> 80
		ASD-OLWS-21-18N20BK-MS	Wet locations	-40°F to 113°F (-40°C to 45°C)	> 0,9	Aluminum	PMMA	> 80
		OLWS-21-PC WITH PHOTOCELL						
		ASD-OLWS-21-N15CC-PC-NK	Wet locations	-4°F to 113°F (-20°C to 45°C)	> 0,9	Aluminum	PMMA	> 80
		ASD-OLWS-21-10N15CC-PC-NK-2PACK	Wet locations	-4°F to 113°F (-20°C to 45°C)	> 0,9	Aluminum	PMMA	> 80
		ASD-OLWS-21-N15CC-PC-BZ	Wet locations	-4°F to 113°F (-20°C to 45°C)	> 0,9	Aluminum	PMMA	> 80
		ASD-OLWS-21-10N15CC-PC-BZ-2PACK	Wet locations	-4°F to 113°F (-20°C to 45°C)	> 0,9	Aluminum	PMMA	> 80
		ASD-OLWS-21-MV-10N15NK-PC	Wet locations	-4°F to 113°F (-20°C to 45°C)	> 0,9	Steel	Acrylic	> 80
		ASD-OLWS-21-MV-10N15BK-PC	Wet locations	-4°F to 113°F (-20°C to 45°C)	> 0,9	Steel	Acrylic	> 80

DIMMING COMPATIBLE CONTROLS:

Brand	Lutron				Leviton					
Models	MACL-153MLH-WH	STCL-153PH-WH	PD-6WCL-WH-R	DVCL-153PR	P-PKG1W	R02-DW6HD-2RW	R00-RNL06-0TW	R68-06674-POT	DSL06	

* The list of dimmers is relevant for models without a motion sensor.

For most up-to-date spec sheets please refer to asd-lighting.com

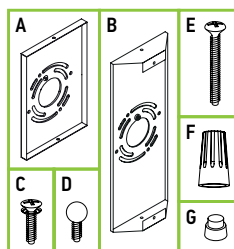


LED OUTDOOR WALL SCENCE

OLWS-21 series

PACKAGE CONTENTS FOR 10" MODELS:

Description	Quantity
LED Outdoor Wall Sconce	1 (2 for 2pack)
Mounting plate (A) for regular models	1
Mounting plate (B) for MV models	1
Fixture screw (C)	2
Decorative screw (D) for MV models	2
Mounting screw (E)	2
Wire nut (F)	3
Photocell cap (G) for PC models	1
Box	1

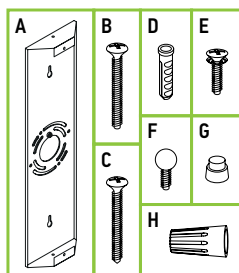


BUILT-IN MOTION SENSOR INFORMATION

Specifications	
Operating voltage	12 Vdc \pm 1 V
Standby power	max 0.5W
Warm-up time	15 \pm 5 s
Hold-time	60 \pm 10 s
Daylight threshold	OFF \rightarrow ON: 10-60 lux (0.9-5.5 fc); ON \rightarrow OFF: max 300 lux (27.8 fc)
Mounting height	max 3.2-6.5 ft (1.8-2.2 m) wall mounted
Detection range	min 26.2 x 393.7 ft (8 x 120 m) wall mounted
Operating temperature	-22 to 122°F (-30 to 50°C)

PACKAGE CONTENTS FOR 18-36" MODELS:

Description	Quantity
LED Outdoor Wall Sconce	1
Mounting plate (A)	1
Mounting screw (B)	2
Self-tapping screw (C)	2 (4 for 24-36")
Fixture screw (D)	2
Decorative screw (E)	2
Wire nut (F)	3
Anchor (G)	2 (4 for 24-36")
Photocell cap (H) for PC models	1
Box	1



BUILT-IN PHOTOCELL INFORMATION

Specifications	
Input power	120 Vac, 60 Hz
Light level to turn ON	30 - 150 lux (2.8 - 14 fc)
Light level to turn OFF	200 - 800 lux (18.6-74.4 fc)
Operating temperature	-4°F to 122°F (-20°C to 50°C)

The dusk-to-dawn sensor automatically turns the fixture off during daylight hours.

INSTALLATION GUIDE

IMPORTANT SAFETY INFORMATION:

Please read all the instructions below before installation!

- ▶ Make sure that the supply voltage corresponds to the rated product voltage.
- ▶ The product must be installed by a qualified electrician in accordance with the National Electrical Code and corresponding local codes.
- ▶ If the product is damaged, do not use it.

⚠ WARNING

Risk of personal injury – read and follow all warnings and installation instructions. Keep or give to the owner for future reference.

Risk of cuts: Wear gloves to prevent cuts or abrasions when removing from carton, handling, installing, and maintaining this product.

Risk of electric shock: This product must be installed in accordance with the applicable installation code by a person familiar with the construction and operation of the product and the hazards involved.

Risk of Fire: Minimum 194°F supply conductors. Consult a qualified electrician to ensure correct branch circuit conductor.

ASD® assumes no responsibility for claims arising out of improper or careless installation or handling of this product.

For most up-to-date spec sheets please refer to asd-lighting.com



LED OUTDOOR WALL SCNCE

OLWS-21 series

STEP-BY-STEP GUIDE FOR ADDING NEW DEVICES TO THE ASD SMART APP:

1. Download the ASD SMART APP from the App Store (for iOS) or from the Google Play Store (for Android) using the QR codes below.

[ASD SMART APP download Android](#)

[ASD SMART APP download iOS](#)



2. Connect the fixture to a power source, then prepare the fixture for pairing:

- If the fixture is blinking: It's already in pairing mode. Skip to Step 4.
- If the fixture is not blinking: Go to Step 3 to manually enter pairing mode.

3. Manually put the fixture in pairing mode:

- Turn the fixture on and off 5 times. The interval between turning on and off should be at least one second.
- The fixture will start blinking, signaling it's in pairing mode. The blinking might stop after a few seconds, but it will still be in pairing mode.

4. Adding the fixture to the App:

- Ensure Bluetooth is enabled and your phone is connected to a Wi-Fi network with internet access.
- Open the ASD SMART APP.
- At the top of the App, select the area where the new fixture will be located.
- Tap the "+" button in the top right corner, then select "Add device".
- Wait for the App to detect the fixture. Once it appears, tap "Add".
- Enter your Wi-Fi credentials when prompted.
- Once the fixture is successfully added, tap "Done" to complete the setup.

FAQ:

1. I can't see the device in the App:

Ensure the smart device is plugged in, Wi-Fi and Bluetooth are enabled on your mobile device, and your network hasn't reached its device limit.

If you're still having trouble:

- Keep the fixtures in pairing mode and reset your router.
- Verify that your Wi-Fi network is 2.4 GHz, as smart devices require this frequency.
- Ensure your smart device is within Wi-Fi range (approximately 5-10ft indoors).

2. "Time out" error when connecting the device:

- On the App homepage, tap the "Me" icon in the lower right corner.
- In the upper right corner of the next screen, tap the "Settings" icon.
- Scroll to the bottom of the settings page to check the current storage occupied by the App cache.
- Close the App, reboot your phone, and try re-adding the device.

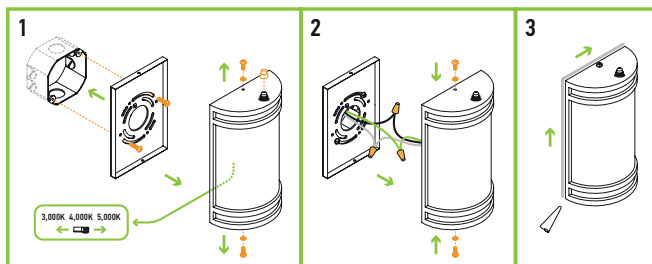
3. I can't control multiple devices at once.

Ensure you are not attempting to group different types of devices (for example, a wall sconce and a security camera). Only devices of the same type can be grouped and controlled together.

To learn more about the App, check out the instructions at this link.

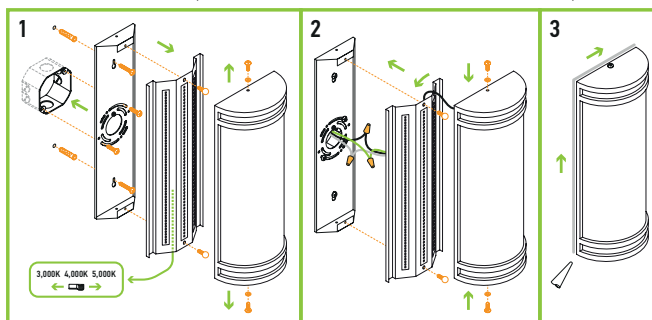
INSTALLATION STEPS FOR 10" MODELS:

1. Unscrew the two fixture screws from the top and the bottom of the wall sconce. Remove the wall plate and attach it to the outlet box using two mounting screws. Choose preferred color temperature by adjusting the switch position inside the fixture. Remove the photocell cap to make the dusk-to-dawn sensor operate.
2. Connect the wires: Black to Black, White to White, Ground to Ground. Secure the connection with wire nuts. Attach the LED panel to the wall plate and secure it with two screws on the top and on the bottom (for models with Motion Sensor or Photocell before attach the cover to the LED panel, please put the wire into the hole).
3. For outdoor locations please use silicone (not included) as shown on a picture.



INSTALLATION STEPS FOR 18-36" MODELS:

1. Unscrew the two fixture screws from the top and the bottom of the wall sconce. Remove the cover and bottom perforated plate, then unscrew two screws from LED panel, and detach it from the wall plate. Attach wall plate to the outlet box using two mounting screws and fit it on a wall with two or four additional screws (depending on model). For models with Photocell remove the photocell cap to make the dusk-to-dawn sensor operate. Choose preferred color temperature by adjusting the switch position inside the fixture (for RGBW smart models color temperature control is made by App).
2. Connect the wires: Black to Black, White to White, Ground to Ground. Secure the connection with wire nuts. Attach the LED panel to the wall plate and secure it with two screws on the top and on the bottom (for models with Motion Sensor or Photocell before attach the cover to the LED panel, please put the wire into the hole).
3. For outdoor locations, please use silicone (not included) as shown on a picture.



* This fixture is not rated for heavy salt water exposure or high salt content in the air. It may cause parts of the fixture to Rust. Will void the warranty of the fixture if installed in a coastal area.

For most up-to-date spec sheets please refer to asd-lighting.com



LED OUTDOOR WALL SCNCE

OLWS-21 series

TRANSPORTATION DATA

Application area	Series	Model	Product dimensions	Weight	UPC	Pcs. (pack) per carton	Carton size	Carton weight	GTIN 14		
RESIDENTIAL	OLWS-21	OLWS-21									
		ASD-OLWS-21-D15CC-NK	7" x 3-1/4" x 9-15/16"	1.8 lbs (0.8 kg)	810050731379	4	12.4" x 18.9" x 10"	11.9 lbs	30810050731370		
		ASD-OLWS-21-10D15CC-NK-2PACK	7" x 3-1/4" x 9-15/16"	4.4 lbs (2 kg)	810128112383	4 (2)	18.9" x 9.7" x 12.4"	11.3 lbs	10810128112380		
		ASD-OLWS-21-D15CC-BZ	7" x 3-1/4" x 9-15/16"	1.8 lbs (0.8 kg)	810050731386	4	12.4" x 18.9" x 10"	11.9 lbs	30810050731387		
		ASD-OLWS-21-10D15CC-BZ-2PACK	7" x 3-1/4" x 9-15/16"	4.4 lbs (2 kg)	810128112390	4 (2)	18.9" x 9.7" x 12.4"	11.3 lbs	10810128112397		
		ASD-OLWS-21-MV-10D15CC-NK	7" x 3-1/4" x 10"	2.2 lbs (1 kg)	810128117333	2	10.2" x 9.7" x 12.4"	6 lbs	10810128117330		
		ASD-OLWS-21-MV-10D15CC-BZ	7" x 3-1/4" x 10"		810128117326	2	10.2" x 9.7" x 12.4"	6 lbs	10810128117323		
		ASD-OLWS-21-MV-10D15CC-BK	7" x 3-1/4" x 10"		810128116992	2	10.2" x 9.7" x 12.4"	6 lbs	10810128116999		
		ASD-OLWS-21-MV-18D20CC-NK	7" x 3-1/4" x 17-15/16"	3.7 lbs (1.7 kg)	810128112789	2	20.3" x 9.7" x 10.4"	10.4 lbs	10810128112786		
		ASD-OLWS-21-MV-18D20CC-BZ	7" x 3-1/4" x 17-15/16"		810128112772	2	20.3" x 9.7" x 10.4"	10.4 lbs	10810128112779		
		ASD-OLWS-21-MV-18D20CC-BK	7" x 3-1/4" x 17-15/16"		810128117340	2	20.3" x 9.7" x 10.4"	10.4 lbs	10810128117347		
		ASD-OLWS-21-MV-24D25CC-NK	7" x 3-1/4" x 23-13/16"	4.5 lbs (2 kg)	810128112802	2	26.2" x 9.7" x 10.4"	12.4 lbs	10810128112809		
		ASD-OLWS-21-MV-24D25CC-BZ	7" x 3-1/4" x 23-13/16"		810128112796	2	26.2" x 9.7" x 10.4"	12.4 lbs	10810128112793		
		ASD-OLWS-21-MV-24D25CC-BK	7" x 3-1/4" x 23-13/16"		810128117357	2	26.2" x 9.7" x 10.4"	12.4 lbs	10810128117354		
		ASD-OLWS-21-MV-36D30CC-NK	7" x 3-1/4" x 36"	6.2 lbs (2.8 kg)	810128115711	2	38.2" x 9.7" x 10.4"	18.6 lbs	10810128115718		
		ASD-OLWS-21-MV-36D30CC-BK	7" x 3-1/4" x 36"		810128115728	2	38.2" x 9.7" x 10.4"	18.6 lbs	10810128115725		
		OLWS-21GR WITH GRID									
				ASD-OLWS-21GR-MV-24D25NK	6-1/2" x 3" x 23-11/16"	4.7 lbs (2.1 kg)	810128117746	2	26.8" x 8.7" x 11.8"	12.8 lbs	10810128117743
				ASD-OLWS-21GR-MV-24D25BK	6-1/2" x 3" x 23-11/16"		810128117739	2	26.8" x 8.7" x 11.8"	12.8 lbs	10810128117736
				ASD-OLWS-21GR-MV-36D30NK	6-1/2" x 3" x 35-7/8"	6.4 lbs (2.9 kg)	810128117760	2	39" x 8.7" x 11.8"	17.4 lbs	10810128117767
				ASD-OLWS-21GR-MV-36D30BK	6-1/2" x 3" x 35-7/8"		810128117753	2	39" x 8.7" x 11.8"	17.4 lbs	10810128117750
		OLWS-21-RGBW									
				ASD-OLWS-21-MV-10D15SM-RGBW-NK	7" x 3-1/4" x 10"	2.2 lbs (1 kg)	810128115742	2	10.2" x 9.7" x 12.4"	6 lbs	10810128115749
				ASD-OLWS-21-MV-10D15SM-RGBW-BK	7" x 3-1/4" x 10"		810128115735	2	10.2" x 9.7" x 12.4"	6 lbs	10810128115732
				ASD-OLWS-21-MV-24D23SM-RGBW-NK	7" x 3-1/4" x 23-13/16"	4.5 lbs (2 kg)	810128115766	2	26.2" x 9.7" x 10.4"	12.5 lbs	10810128115763
				ASD-OLWS-21-MV-24D23SM-RGBW-BK	7" x 3-1/4" x 23-13/16"		810128115759	2	26.2" x 9.7" x 10.4"	12.5 lbs	10810128115756
		OLWS-21-MS WITH MOTION SENSOR									
				ASD-OLWS-21-10N15NK-MS	7" x 3-9/16" x 9-15/16"	2.7 lbs (1.2 kg)	810128118231	4	18.9" x 12.4" x 12"	14.6 lbs	10810128118238
				ASD-OLWS-21-10N15BK-MS	7" x 3-9/16" x 9-15/16"		810128118224	4	18.9" x 12.4" x 12"	14.6 lbs	10810128118221
				ASD-OLWS-21-18N20NK-MS	7" x 3-9/16" x 17-15/16"	4 lbs (1.8 kg)	810128118255	2	20.3" x 9.7" x 12"	11.4 lbs	10810128118252
				ASD-OLWS-21-18N20BK-MS	7" x 3-9/16" x 17-15/16"		810128118248	2	20.3" x 9.7" x 12"	11.4 lbs	10810128118245
		OLWS-21-PC WITH PHOTOCELL									
				ASD-OLWS-21-N15CC-PC-NK	7" x 3-1/4" x 10-7/16"	2.2 lbs (1 kg)	810050737760	4	12.4" x 18.9" x 10"	11.9 lbs	10810050737767
				ASD-OLWS-21-10N15CC-PC-NK-2PACK	7" x 3-1/4" x 10-7/16"	4.4 lbs (2 kg)	810128113502	4 (2)	12.4" x 18.9" x 9.7"	11.3 lbs	10810128113509
				ASD-OLWS-21-N15CC-PC-BZ	7" x 3-1/4" x 10-7/16"	2.2 lbs (1 kg)	810050737753	4	12.4" x 18.9" x 10"	11.9 lbs	10810050737750
				ASD-OLWS-21-10N15CC-PC-BZ-2PACK	7" x 3-1/4" x 10-7/16"	4.4 lbs (2 kg)	810128111195	4 (2)	12.4" x 18.9" x 9.7"	11.3 lbs	10810128111192
				ASD-OLWS-21-MV-10N15NK-PC	7" x 3-1/4" x 10-7/16"	2.2 lbs (1 kg)	810128117319	2	10.2" x 9.7" x 12.4"	6 lbs	10810128117316
				ASD-OLWS-21-MV-10N15BK-PC	7" x 3-1/4" x 10-7/16"	2.2 lbs (1 kg)	810128117302	2	10.2" x 9.7" x 12.4"	6 lbs	10810128117309

For most up-to-date spec sheets please refer to asd-lighting.com