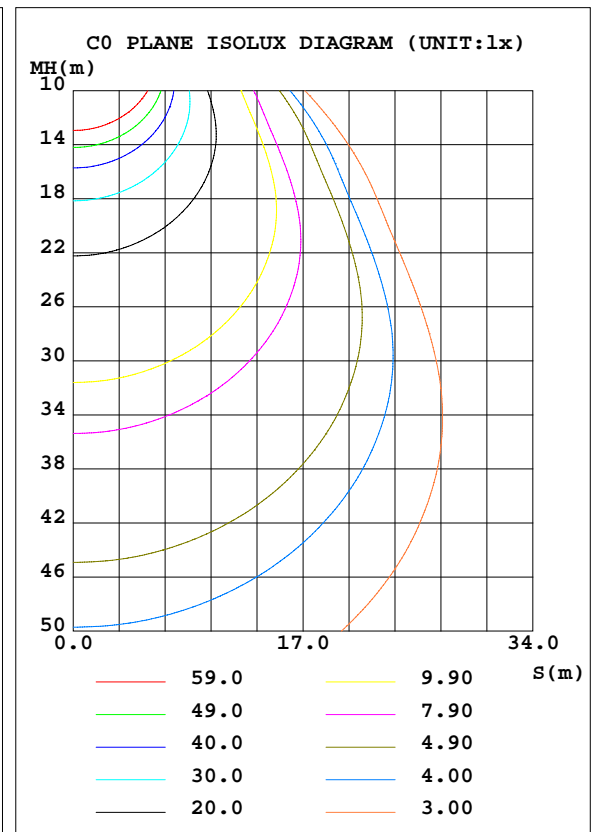
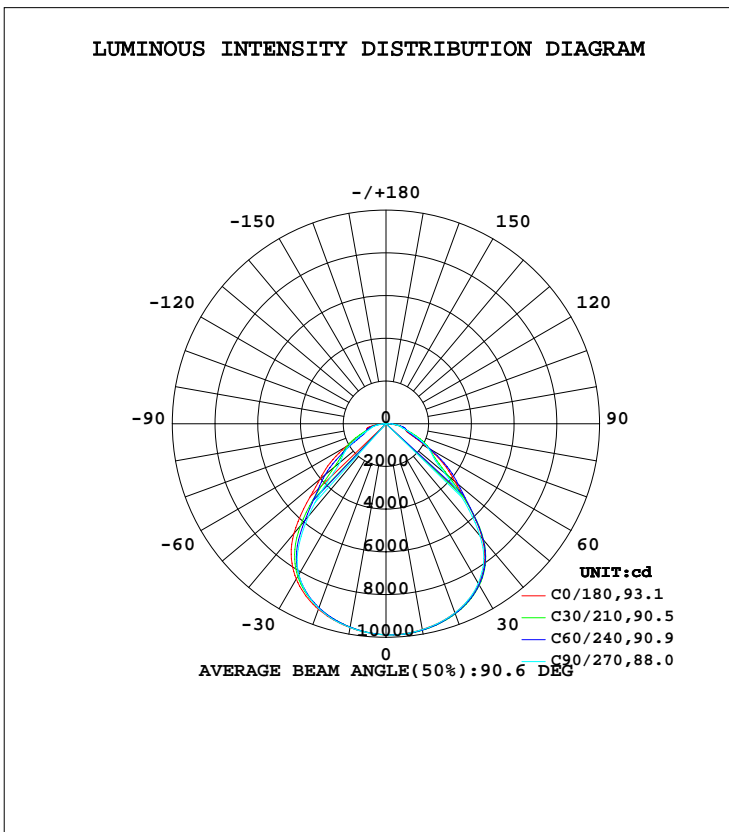


LUMINAIRE PHOTOMETRIC TEST REPORT

Test:U:120.00V I:1.3308A P:159.47W PF:0.9986 Freq:60.00Hz Lamp Flux:22605x1 lm		
NAME: ASD Lighting Corp	TYPE: LED	WEIGHT:
SPEC.: ASD-WHB5M-2D16550-MSR	DIM.:	SERIAL No.:
MFR.: ASD Lighting Corp	SUR.:	Shielding Angle:

DATA OF LAMP		PHOTOMETRIC DATA Eff: 137.61 lm/W			
MODEL	ASD-WHB5M-2D16550-MSR	Imax(cd)	9894	S/MH(C0/180)	1.26
NOMINAL POWER(W)	165	LOR(%)	100.0	S/MH(C90/270)	1.20
RATED VOLTAGE(V)	120-277	TOTAL FLUX(lm)	22605	η UP, DN(C0-180)	0.1,52.7
NOMINAL FLUX(lm)	22605	CIE CLASS	DIRECT	η UP, DN(C180-360)	0.1,47.1
LAMPS INSIDE	1	η up(%)	0.2	CIBSE SHR NOM	1.25
TEST VOLTAGE(V)	120	η down(%)	99.8	CIBSE SHR MAX	1.30



C Range: 0 - 360DEG
 C Interval: 15.0DEG
 Test Speed: HIGH
 Temperature: 25.1DEG
 Operators: Alan Wang
 Test Date: 04 June 2021

γ Range: 0 - 180DEG
 γ Interval: 1.0DEG
 Test System: EVERFINE GO-R5000_V2 SYSTEM V2.00.442T2
 Humidity: 47.8%
 Test Distance: 2.500m [K=1.0462]
 Remarks:

ZONAL FLUX DIAGRAM

ZONAL FLUX DIAGRAM:

γ	C0	C45	C90	C135	C180	C225	C270	C315	γ	Φ zone	Φ total	%lum,lamp
10	9783	9814	9786	9756	9690	9663	9684	9707	0- 10	936.2	936.2	4.27,4.27
20	9430	9467	9426	9370	9243	9170	9201	9253	10- 20	2702	3638	16.6,16.6
30	8671	8729	8632	8620	8400	8204	8165	8276	20- 30	4126	7764	35.4,35.4
40	7035	7106	6846	7077	6705	6045	5646	5918	30- 40	4777	12542	57.2,57.2
50	4213	4218	3572	4140	4033	3604	2826	3545	40- 50	3890	16432	74.9,74.9
60	2288	2501	2290	2491	2200	2021	1885	1903	50- 60	2603	19035	86.7,86.7
70	1024	1337	1190	1370	982.4	1164	894.6	1119	60- 70	1600	20635	94,94
80	717.8	713.3	663.4	751.0	735.6	516.7	474.5	452.0	70- 80	939.7	21574	98.3,98.3
90	47.27	90.40	84.31	134.8	51.29	5.193	2.045	1.992	80- 90	335.2	21909	99.8,99.8
100	1.804	1.061	0.7937	0.9813	2.544	2.190	1.784	2.346	90-100	11.72	21921	99.9,99.9
110	2.633	1.764	1.460	1.926	3.253	2.780	2.523	2.955	100-110	2.270	21923	99.9,99.9
120	2.933	2.289	2.286	2.558	3.794	3.782	3.731	4.133	110-120	2.602	21926	99.9,99.9
130	3.821	3.311	3.416	3.708	5.271	5.802	6.285	5.807	120-130	3.443	21929	99.9,99.9
140	4.854	4.390	4.801	4.799	6.699	7.464	7.781	7.277	130-140	4.105	21934	100,100
150	5.839	5.565	5.830	5.800	7.999	8.655	8.908	8.899	140-150	4.122	21938	100,100
160	6.855	6.594	7.006	6.995	9.780	9.700	9.827	9.704	150-160	3.551	21941	100,100
170	8.108	8.143	8.002	8.228	9.692	9.712	10.16	9.607	160-170	2.439	21944	100,100
180	9.340	9.340	9.340	9.340	9.063	9.063	9.063	9.063	170-180	0.8600	21945	100,100
DEG	LUMINOUS INTENSITY:cd									UNIT:lm		

Conical surface Flux(90deg): 14682 lm

%lum = 66.9%

%lamp = 66.9%

Conical surface Flux(120deg): 19035 lm

%lum = 86.7%

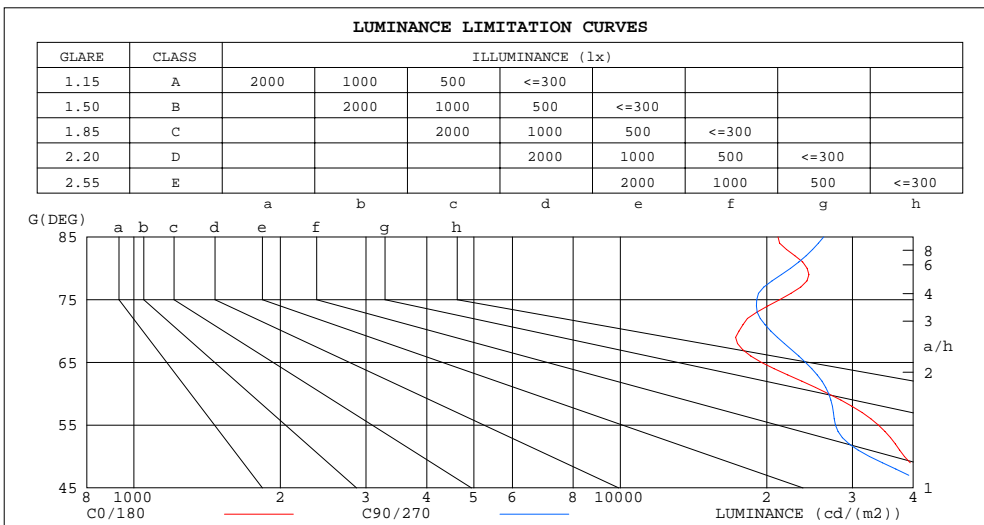
%lamp = 86.7%

C Range: 0 - 360DEG
 C Interval: 15.0DEG
 Test Speed: HIGH
 Temperature: 25.1DEG
 Operators: Alan Wang
 Test Date: 04 June 2021

γ Range: 0 - 180DEG
 γ Interval: 1.0DEG
 Test System: EVERFINE GO-R5000_V2 SYSTEM V2.00.442T2
 Humidity: 47.8%
 Test Distance: 2.500m [K=1.0462]
 Remarks:

LUMINANCE LIMITATION CURVES

Test:U:120.00V I:1.3308A P:159.47W PF:0.9986 Freq:60.00Hz Lamp Flux:22605x1 lm		
NAME: ASD Lighting Corp	TYPE: LED	WEIGHT:
SPEC.: ASD-WHB5M-2D16550-MSR	DIM.:	SERIAL No.:
MFR.: ASD Lighting Corp	SUR.:	Shielding Angle:



LUMINANCE cd/(m2)		
G(DEG)	C0/180	C90/270
85	21095	26178
80	24211	22376
75	21256	19075
70	17532	20384
65	19509	24036
60	26795	26819
55	33938	27691
50	38384	32550
45	45948	43540

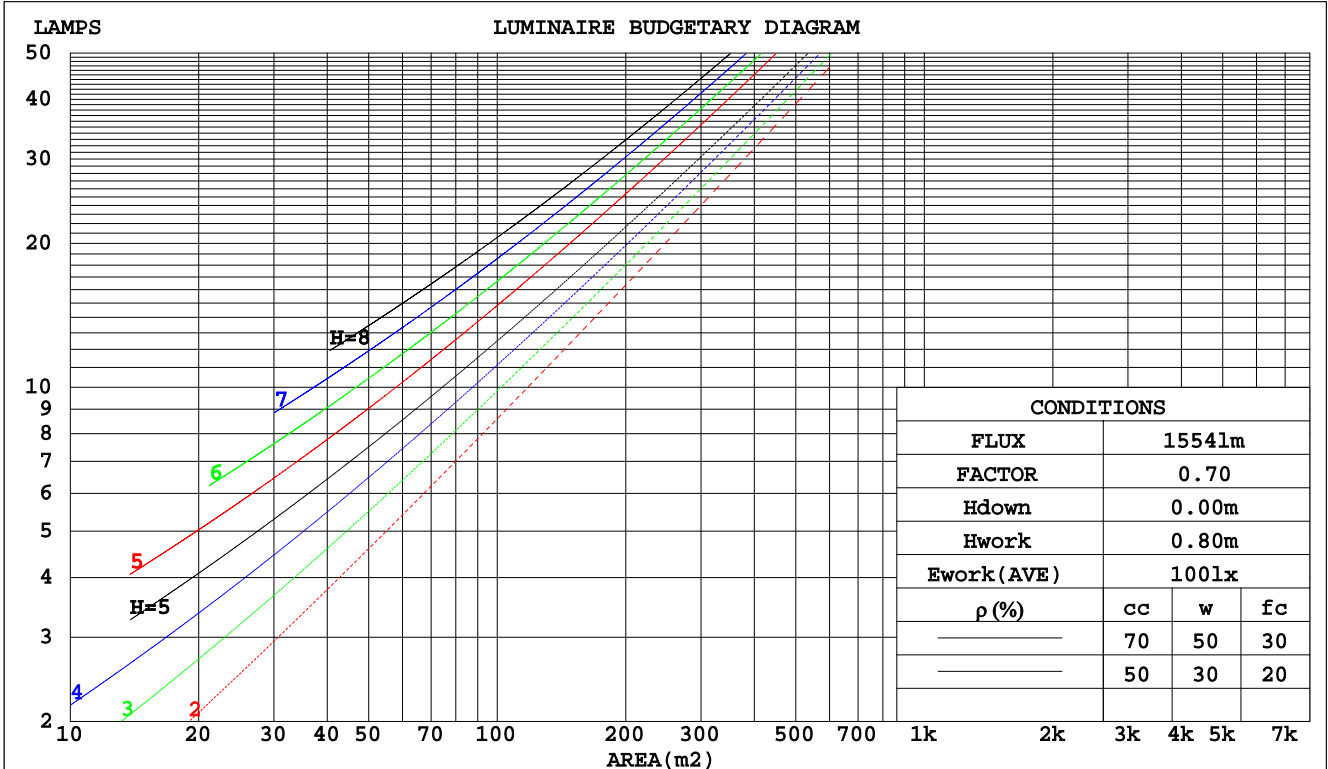
C Range: 0 - 360DEG
 C Interval: 15.0DEG
 Test Speed: HIGH
 Temperature: 25.1DEG
 Operators: Alan Wang
 Test Date: 04 June 2021

γ Range: 0 - 180DEG
 γ Interval: 1.0DEG
 Test System: EVERFINE GO-R5000_V2 SYSTEM V2.00.442T2
 Humidity: 47.8%
 Test Distance: 2.500m [K=1.0462]
 Remarks:

CU AND LUMINAIRE BUDGETARY ESTIMATE DIAGRAM

Test:U:120.00V I:1.3308A P:159.47W PF:0.9986 Freq:60.00Hz Lamp Flux:22605x1 lm		
NAME: ASD Lighting Corp	TYPE: LED	WEIGHT:
SPEC.: ASD-WHB5M-2D16550-MSR	DIM.:	SERIAL No.:
MFR.: ASD Lighting Corp	SUR.:	Shielding Angle:

pcc	80%			70%			50%			30%			10%			0
pw	50%	30%	10%	50%	30%	10%	50%	30%	10%	50%	30%	10%	50%	30%	10%	0
pfc	20%			20%			20%			20%			20%			0
RCR	RCR:Room Cavity Ratio						Coefficients of Utilization(CU)									
0.0	1.19	1.19	1.19	1.16	1.16	1.16	1.11	1.11	1.11	1.06	1.06	1.06	1.02	1.02	1.02	.00
1.0	1.06	1.02	.99	1.04	1.00	.97	.99	.97	.94	.95	.93	.91	.92	.90	.88	.86
2.0	.94	.88	.83	.92	.87	.82	.89	.84	.80	.85	.82	.78	.83	.79	.76	.74
3.0	.84	.77	.71	.82	.76	.70	.80	.74	.69	.77	.72	.68	.74	.70	.67	.65
4.0	.76	.68	.61	.74	.67	.61	.72	.65	.60	.70	.64	.59	.67	.63	.59	.57
5.0	.68	.60	.54	.67	.59	.54	.65	.58	.53	.63	.57	.53	.61	.56	.52	.50
6.0	.62	.54	.48	.61	.53	.48	.59	.52	.47	.58	.52	.47	.56	.51	.46	.45
7.0	.57	.49	.43	.56	.48	.43	.54	.47	.42	.53	.47	.42	.52	.46	.42	.40
8.0	.52	.44	.39	.51	.44	.39	.50	.43	.38	.49	.43	.38	.48	.42	.38	.36
9.0	.48	.40	.35	.47	.40	.35	.46	.40	.35	.45	.39	.35	.44	.39	.34	.33
10.0	.44	.37	.32	.44	.37	.32	.43	.36	.32	.42	.36	.32	.41	.36	.32	.30



C Range: 0 - 360DEG
 C Interval: 15.0DEG
 Test Speed: HIGH
 Temperature: 25.1DEG
 Operators: Alan Wang
 Test Date: 04 June 2021

γ Range: 0 - 180DEG
 γ Interval: 1.0DEG
 Test System: EVERFINE GO-R5000_V2 SYSTEM V2.00.442T2
 Humidity: 47.8%
 Test Distance: 2.500m [K=1.0462]
 Remarks:

WEC AND CCEC

Test:U:120.00V I:1.3308A P:159.47W PF:0.9986 Freq:60.00Hz Lamp Flux:22605x1 lm		
NAME: ASD Lighting Corp	TYPE: LED	WEIGHT:
SPEC.: ASD-WHB5M-2D16550-MSR	DIM.:	SERIAL No.:
MFR.: ASD Lighting Corp	SUR.:	Shielding Angle:

ρcc	80%			70%			50%			30%			10%			0
ρw	50%	30%	10%	50%	30%	10%	50%	30%	10%	50%	30%	10%	50%	30%	10%	0
ρfc	20%			20%			20%			20%			20%			0
RCR	RCR:Room Cavity Ratio						Wall Exitance Coefficients(WEC)									
0.0																
1.0	.271	.154	.049	.264	.151	.048	.251	.144	.046	.239	.138	.044	.228	.132	.043	
2.0	.257	.141	.043	.251	.138	.043	.239	.133	.041	.228	.128	.040	.219	.124	.039	
3.0	.240	.128	.038	.235	.126	.038	.224	.122	.037	.215	.118	.036	.207	.114	.035	
4.0	.224	.116	.034	.219	.115	.034	.210	.111	.033	.202	.108	.033	.194	.106	.032	
5.0	.209	.106	.031	.205	.105	.031	.197	.103	.030	.190	.100	.030	.183	.098	.029	
6.0	.196	.098	.028	.192	.097	.028	.185	.095	.028	.178	.093	.027	.172	.091	.027	
7.0	.183	.091	.026	.180	.090	.026	.174	.088	.025	.168	.086	.025	.163	.084	.025	
8.0	.173	.084	.024	.170	.084	.024	.164	.082	.023	.159	.080	.023	.154	.079	.023	
9.0	.163	.079	.022	.160	.078	.022	.155	.077	.022	.150	.075	.022	.146	.074	.021	
10.0	.154	.074	.020	.152	.073	.020	.147	.072	.020	.143	.071	.020	.139	.070	.020	

ρcc	80%			70%			50%			30%			10%			0
ρw	50%	30%	10%	50%	30%	10%	50%	30%	10%	50%	30%	10%	50%	30%	10%	0
ρfc	20%			20%			20%			20%			20%			0
RCR	RCR:Room Cavity Ratio						Ceiling Cavity Exitance Coefficients(CCEC)									
0.0	.192	.192	.192	.164	.164	.164	.112	.112	.112	.064	.064	.064	.021	.021	.021	
1.0	.179	.158	.139	.153	.135	.119	.105	.093	.083	.060	.054	.048	.019	.017	.016	
2.0	.169	.133	.103	.145	.115	.089	.099	.079	.062	.057	.046	.037	.018	.015	.012	
3.0	.160	.115	.080	.137	.099	.069	.094	.069	.049	.054	.040	.029	.017	.013	.009	
4.0	.152	.102	.063	.130	.088	.055	.090	.061	.039	.052	.036	.023	.017	.012	.008	
5.0	.144	.091	.052	.124	.079	.045	.085	.055	.032	.049	.032	.019	.016	.011	.006	
6.0	.137	.082	.043	.118	.071	.037	.081	.050	.026	.047	.029	.016	.015	.010	.005	
7.0	.131	.075	.037	.113	.065	.032	.078	.046	.023	.045	.027	.013	.015	.009	.004	
8.0	.125	.070	.032	.107	.060	.028	.074	.042	.020	.043	.025	.012	.014	.008	.004	
9.0	.119	.065	.028	.103	.056	.024	.071	.039	.017	.041	.023	.010	.013	.008	.003	
10.0	.114	.060	.025	.098	.052	.022	.068	.037	.015	.040	.022	.009	.013	.007	.003	

C Range: 0 - 360DEG
 C Interval: 15.0DEG
 Test Speed: HIGH
 Temperature: 25.1DEG
 Operators: Alan Wang
 Test Date: 04 June 2021

γ Range: 0 - 180DEG
 γ Interval: 1.0DEG
 Test System: EVERFINE GO-R5000_V2 SYSTEM V2.00.442T2
 Humidity: 47.8%
 Test Distance: 2.500m [K=1.0462]
 Remarks:

UGR(Unified Glare Rating) Table

Test:U:120.00V I:1.3308A P:159.47W PF:0.9986 Freq:60.00Hz Lamp Flux:22605x1 lm										
NAME: ASD Lighting Corp					TYPE: LED			WEIGHT:		
SPEC.: ASD-WHB5M-2D16550-MSR					DIM.:			SERIAL No.:		
MFR.: ASD Lighting Corp					SUR.:			Shielding Angle:		
ceiling/cavity	0.7	0.7	0.5	0.5	0.3	0.7	0.7	0.5	0.5	0.3
walls	0.5	0.3	0.5	0.3	0.3	0.5	0.3	0.5	0.3	0.3
working plane	0.2	0.2	0.2	0.2	0.2	0.2	0.2	0.2	0.2	0.2
Room dimensions	Viewed crosswise					Viewed endwise				
x = 2H y = 2H	23.2	24.6	23.5	25.0	25.3	23.6	25.1	24.0	25.4	25.7
3H	24.5	25.8	24.9	26.1	26.5	24.9	26.2	25.3	26.6	26.9
4H	25.1	26.3	25.5	26.7	27.0	25.4	26.6	25.8	27.0	27.4
6H	25.7	26.8	26.1	27.2	27.6	25.9	27.0	26.3	27.4	27.8
8H	25.9	27.0	26.3	27.4	27.8	26.1	27.2	26.5	27.6	28.0
12H	26.0	27.1	26.5	27.5	27.9	26.3	27.4	26.8	27.7	28.2
4H 2H	23.6	24.9	24.0	25.2	25.6	24.0	25.3	24.4	25.6	26.0
3H	25.1	26.2	25.6	26.6	27.0	25.4	26.5	25.8	26.9	27.3
4H	25.9	26.8	26.3	27.2	27.6	26.1	27.0	26.6	27.5	27.9
6H	26.6	27.4	27.1	27.9	28.4	26.9	27.7	27.3	28.1	28.6
8H	26.9	27.7	27.4	28.1	28.6	27.2	27.9	27.7	28.4	28.9
12H	27.1	27.8	27.6	28.3	28.7	27.5	28.2	28.0	28.6	29.1
8H 4H	26.1	26.9	26.6	27.3	27.8	26.4	27.2	26.9	27.6	28.1
6H	27.1	27.7	27.6	28.2	28.7	27.4	28.0	27.9	28.5	29.0
8H	27.5	28.0	28.0	28.5	29.0	27.9	28.4	28.4	28.9	29.4
12H	27.8	28.3	28.3	28.8	29.3	28.3	28.8	28.8	29.3	29.9
12H 4H	26.2	26.9	26.7	27.4	27.8	26.5	27.2	27.0	27.6	28.1
6H	27.2	27.8	27.7	28.2	28.8	27.5	28.1	28.0	28.5	29.1
8H	27.6	28.1	28.2	28.6	29.2	28.1	28.6	28.6	29.0	29.6
CIE190: 2010										

CIE190: 2010
Area: 0.170742 m2

C Range: 0 - 360DEG
C Interval: 15.0DEG
Test Speed: HIGH
Temperature: 25.1DEG
Operators: Alan Wang
Test Date: 04 June 2021

γ Range: 0 - 180DEG
γ Interval: 1.0DEG
Test System: EVERFINE GO-R5000_V2 SYSTEM V2.00.442T2
Humidity: 47.8%
Test Distance: 2.500m [K=1.0462]
Remarks:

UTILIZATION FACTORS TABLE

Test:U:120.00V I:1.3308A P:159.47W PF:0.9986 Freq:60.00Hz Lamp Flux:22605x1 lm		
NAME: ASD Lighting Corp	TYPE: LED	WEIGHT:
SPEC.: ASD-WHB5M-2D16550-MSR	DIM.:	SERIAL No.:
MFR.: ASD Lighting Corp	SUR.:	Shielding Angle:

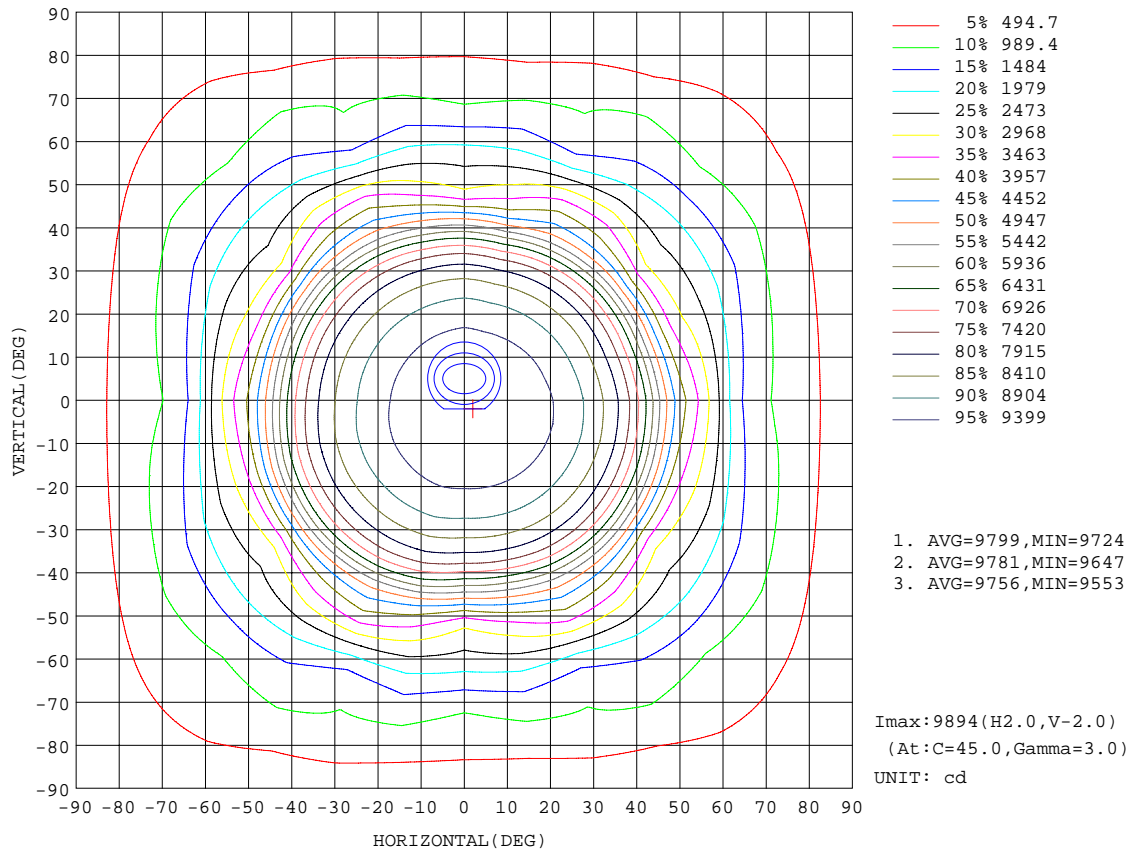
REFLECTANCE										
Ceiling	0.8	0.8	0.8	0.7	0.7	0.7	0.5	0.5	0.5	0
Walls	0.7	0.5	0.3	0.7	0.5	0.3	0.7	0.5	0.3	0
Working plane	0.2	0.2	0.2	0.2	0.2	0.2	0.2	0.2	0.2	0
ROOM INDEX	UTILIZATION FACTORS(PERCENT) $k(RI) \times RCR = 5$									
k = 0.60	65	55	48	64	54	48	63	54	48	42
0.80	75	65	58	74	64	58	72	63	58	51
1.00	82	73	67	81	72	66	79	73	66	60
1.25	89	80	74	88	79	73	85	78	73	66
1.50	93	85	79	92	84	78	89	82	77	71
2.00	99	92	86	97	91	86	94	88	84	77
2.50	102	96	90	100	94	90	97	92	88	80
3.00	105	99	94	103	98	93	99	95	91	83
4.00	108	103	99	106	102	98	102	98	95	87
5.00	110	106	103	108	104	101	104	101	98	89
ROOM INDEX	UF(total)									Direct
According to DIN EN 13032-2 2004			Suspended				SHRNOM = 1.25			

C Range: 0 - 360DEG
 C Interval: 15.0DEG
 Test Speed: HIGH
 Temperature: 25.1DEG
 Operators: Alan Wang
 Test Date: 04 June 2021

γ Range: 0 - 180DEG
 γ Interval: 1.0DEG
 Test System: EVERFINE GO-R5000_V2 SYSTEM V2.00.442T2
 Humidity: 47.8%
 Test Distance: 2.500m [K=1.0462]
 Remarks:

ISOCANDELA DIAGRAM

Test:U:120.00V I:1.3308A P:159.47W PF:0.9986 Freq:60.00Hz Lamp Flux:22605x1 lm		
NAME: ASD Lighting Corp	TYPE: LED	WEIGHT:
SPEC.: ASD-WHB5M-2D16550-MSR	DIM.:	SERIAL No.:
MFR.: ASD Lighting Corp	SUR.:	Shielding Angle:

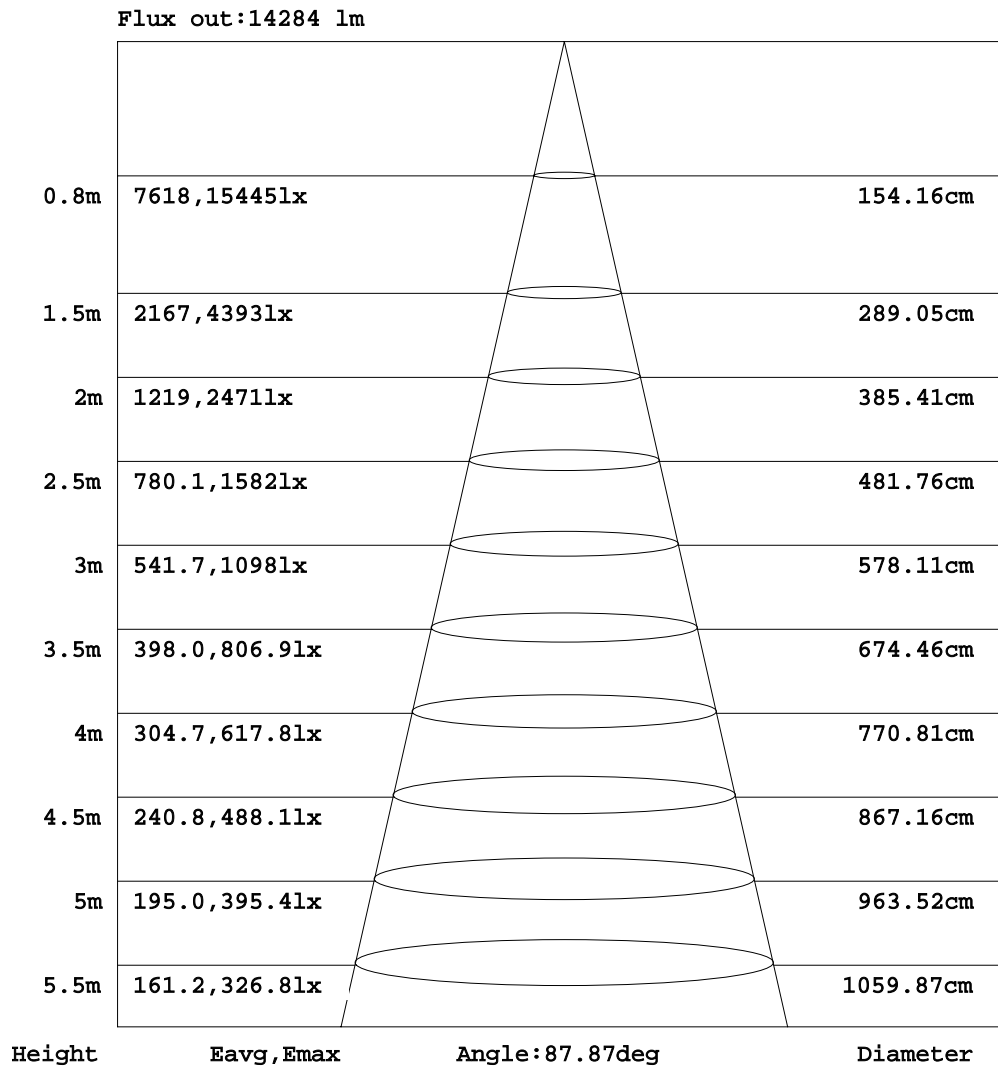


C Range: 0 - 360DEG
 C Interval: 15.0DEG
 Test Speed: HIGH
 Temperature: 25.1DEG
 Operators: Alan Wang
 Test Date: 04 June 2021

γ Range: 0 - 180DEG
 γ Interval: 1.0DEG
 Test System: EVERFINE GO-R5000_V2 SYSTEM V2.00.442T2
 Humidity: 47.8%
 Test Distance: 2.500m [K=1.0462]
 Remarks:

AAI Figure

Test:U:120.00V I:1.3308A P:159.47W PF:0.9986 Freq:60.00Hz Lamp Flux:22605x1 lm		
NAME: ASD Lighting Corp	TYPE: LED	WEIGHT:
SPEC.: ASD-WHB5M-2D16550-MSR	DIM.:	SERIAL No.:
MFR.: ASD Lighting Corp	SUR.:	Shielding Angle:



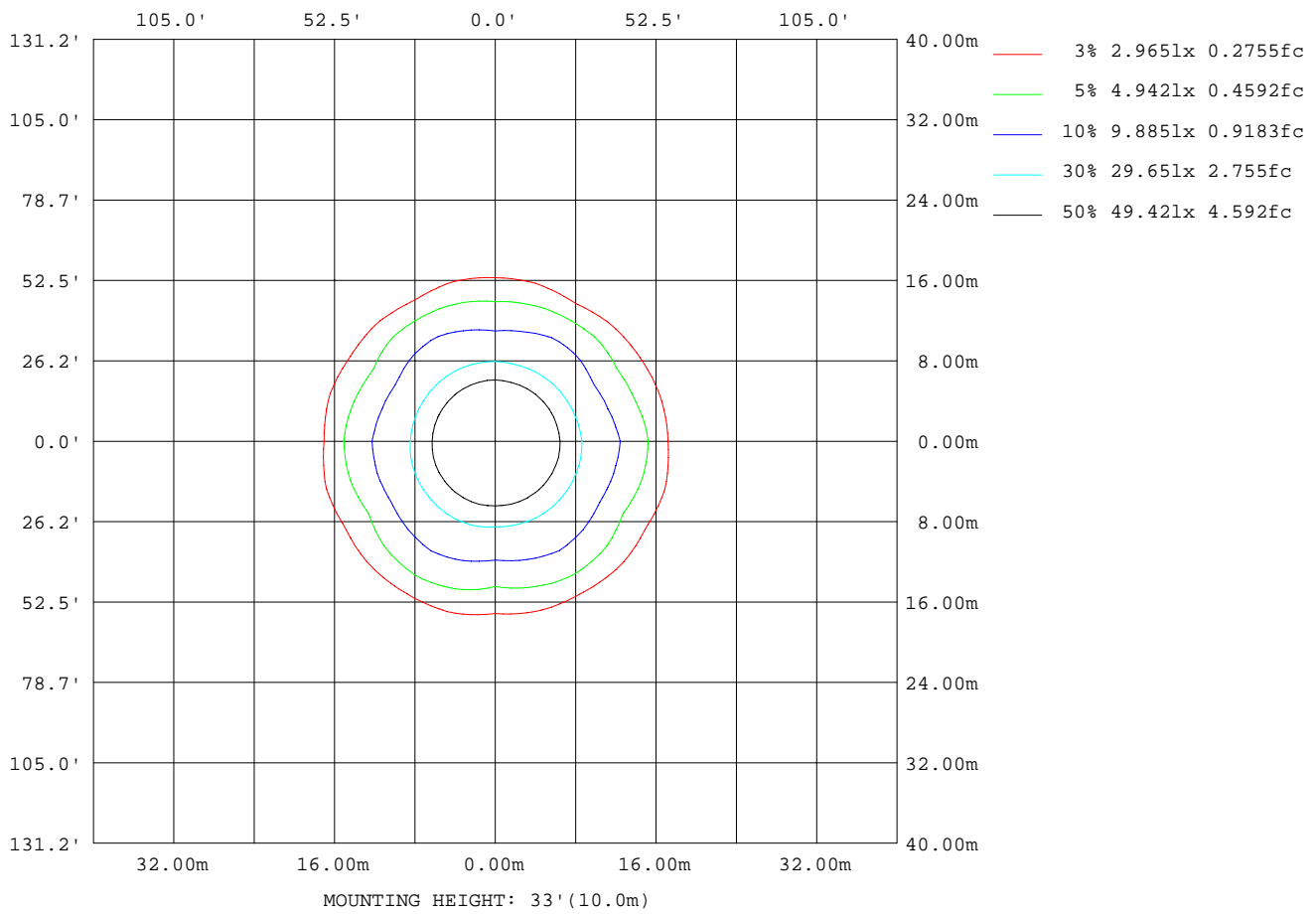
Note:The Curves indicate the illuminated area and the average illumination when the luminaire is at different distance.

C Range: 0 - 360DEG
 C Interval: 15.0DEG
 Test Speed: HIGH
 Temperature: 25.1DEG
 Operators: Alan Wang
 Test Date: 04 June 2021

γ Range: 0 - 180DEG
 γ Interval: 1.0DEG
 Test System: EVERFINE GO-R5000_V2 SYSTEM V2.00.442T2
 Humidity: 47.8%
 Test Distance: 2.500m [K=1.0462]
 Remarks:

ISOLUX DIAGRAM

Test:U:120.00V I:1.3308A P:159.47W PF:0.9986 Freq:60.00Hz Lamp Flux:22605x1 lm		
NAME: ASD Lighting Corp	TYPE: LED	WEIGHT:
SPEC.: ASD-WHB5M-2D16550-MSR	DIM.:	SERIAL No.:
MFR.: ASD Lighting Corp	SUR.:	Shielding Angle:



C Range: 0 - 360DEG
 C Interval: 15.0DEG
 Test Speed: HIGH
 Temperature: 25.1DEG
 Operators: Alan Wang
 Test Date: 04 June 2021

γ Range: 0 - 180DEG
 γ Interval: 1.0DEG
 Test System: EVERFINE GO-R5000_V2 SYSTEM V2.00.442T2
 Humidity: 47.8%
 Test Distance: 2.500m [K=1.0462]
 Remarks:

LED Avg.L Report

Test:U:120.00V I:1.3308A P:159.47W PF:0.9986 Freq:60.00Hz Lamp Flux:22605x1 lm		
NAME: ASD Lighting Corp	TYPE: LED	WEIGHT:
SPEC.: ASD-WHB5M-2D16550-MSR	DIM.:	SERIAL No.:
MFR.: ASD Lighting Corp	SUR.:	Shielding Angle:

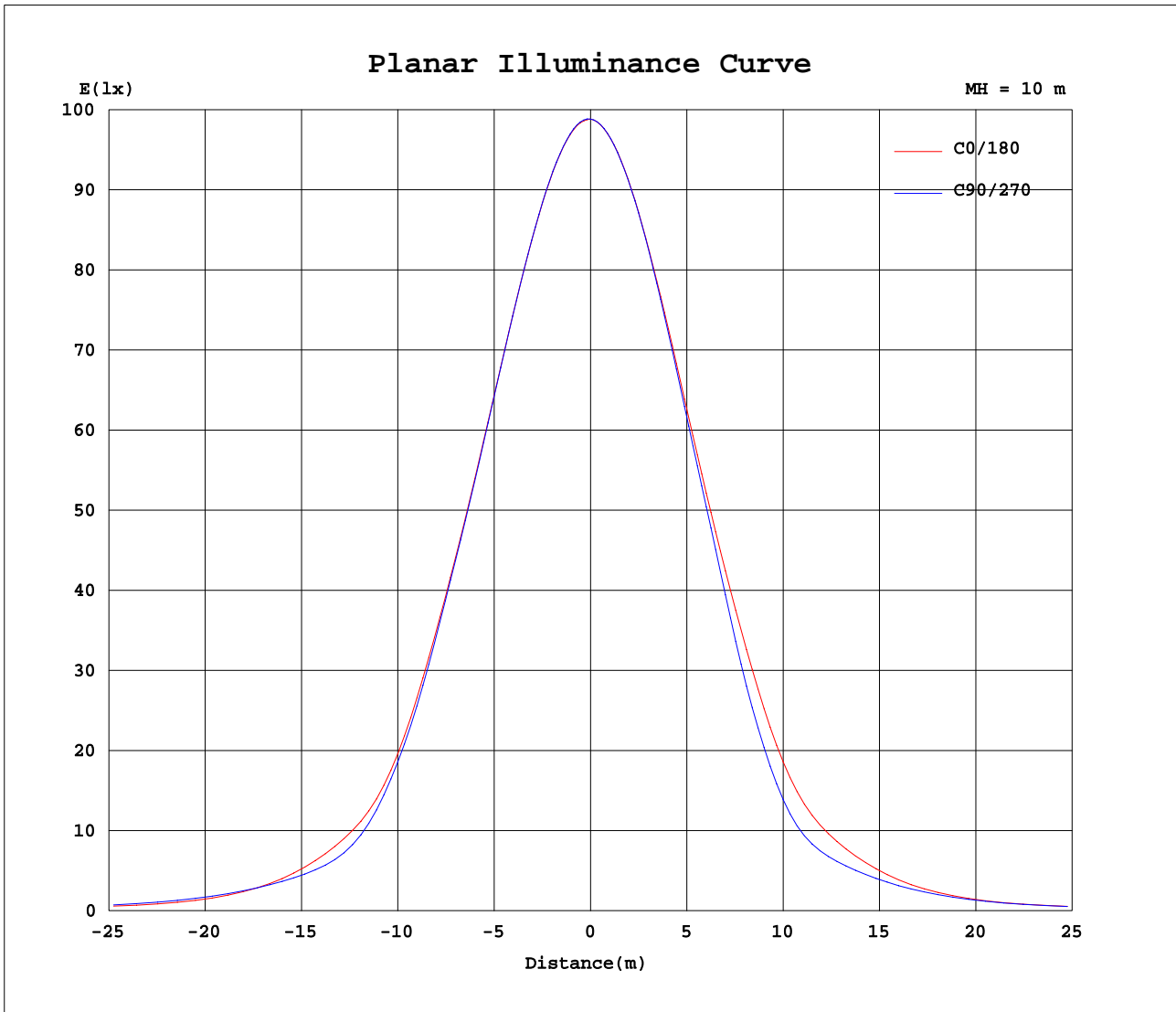
AvgL	cd/m2
L_0~180(65)av	19112
L_0~180(75)av	21133
L_0~180(85)av	22139
L_90~270(65)av	21053
L_90~270(75)av	17551
L_90~270(85)av	17370
L_45(65)av	22469
L_45(75)av	21500
L_45(85)av	19441

Standard: GB/T 29293-2012

C Range: 0 - 360DEG
 C Interval: 15.0DEG
 Test Speed: HIGH
 Temperature: 25.1DEG
 Operators: Alan Wang
 Test Date: 04 June 2021

γ Range: 0 - 180DEG
 γ Interval: 1.0DEG
 Test System: EVERFINE GO-R5000_V2 SYSTEM V2.00.442T2
 Humidity: 47.8%
 Test Distance: 2.500m [K=1.0462]
 Remarks:

Planar Illuminance Curve



C Range: 0 - 360DEG
 C Interval: 15.0DEG
 Test Speed: HIGH
 Temperature: 25.1DEG
 Operators: Alan Wang
 Test Date: 04 June 2021

γ Range: 0 - 180DEG
 γ Interval: 1.0DEG
 Test System: EVERFINE GO-R5000_V2 SYSTEM V2.00.442T2
 Humidity: 47.8%
 Test Distance: 2.500m [K=1.0462]
 Remarks:

LUMINOUS DISTRIBUTION INTENSITY DATA

Test:U:120.00V I:1.3308A P:159.47W PF:0.9986 Freq:60.00Hz Lamp Flux:22605x1 lm		
NAME: ASD Lighting Corp	TYPE: LED	WEIGHT:
SPEC.: ASD-WHB5M-2D16550-MSR	DIM.:	SERIAL No.:
MFR.: ASD Lighting Corp	SUR.:	Shielding Angle:

Table--1

UNIT: cd

C(DEG) γ (DEG)	0	15	30	45	60	75	90	105	120	135	150	165	180	195	210	225	240	255	270
0	9885	9885	9885	9885	9885	9885	9885	9885	9885	9885	9885	9885	9885	9885	9885	9885	9885	9885	9885
5	9865	9879	9887	9887	9883	9877	9873	9873	9865	9858	9842	9827	9817	9808	9805	9805	9807	9812	9819
10	9783	9811	9818	9814	9808	9797	9786	9791	9771	9756	9741	9714	9690	9675	9666	9663	9666	9674	9684
15	9641	9676	9681	9677	9671	9657	9644	9648	9621	9595	9571	9538	9503	9481	9463	9457	9462	9470	9494
20	9430	9465	9471	9467	9457	9442	9426	9433	9404	9370	9343	9298	9243	9212	9184	9170	9168	9174	9201
25	9115	9163	9172	9166	9151	9129	9102	9131	9096	9058	9024	8970	8886	8842	8798	8770	8754	8754	8778
30	8671	8729	8735	8729	8714	8671	8632	8692	8662	8620	8581	8518	8400	8329	8257	8204	8170	8151	8165
35	8027	8093	8098	8096	8076	8021	7965	8077	8048	7996	7951	7886	7720	7591	7463	7373	7299	7199	7175
40	7035	7113	7106	7106	7078	6938	6846	7112	7143	7077	7015	6948	6705	6460	6224	6045	5917	5722	5646
45	5547	5598	5545	5582	5603	5406	5257	5601	5660	5556	5503	5502	5255	4884	4547	4557	4612	4274	3923
50	4213	4038	3833	4218	4418	4000	3572	4113	4433	4140	3786	3979	4033	3518	3166	3604	3722	3210	2826
55	3324	3106	2806	3313	3492	3046	2712	3223	3566	3283	2734	3016	3188	2803	2503	2790	2677	2564	2408
60	2288	2486	2355	2501	2410	2426	2290	2517	2504	2491	2333	2439	2200	2276	2106	2021	1720	1945	1885
65	1408	1840	1862	1785	1525	1820	1734	1874	1577	1822	1862	1877	1351	1681	1573	1472	1157	1438	1304
70	1024	1339	1290	1337	1091	1345	1190	1405	1103	1370	1296	1377	982	1232	1049	1164	982	1077	895
75	939	995	846	1049	959	989	843	1044	972	1080	888	1022	928	927	735	870	851	780	708
80	718	688	670	713	757	698	663	751	811	751	690	739	736	621	605	517	537	476	474
85	314	318	375	377	419	384	390	446	489	434	460	399	345	281	255	218	187	147	127
90	47.3	52.3	84.6	90.4	94.0	87.7	84.3	125	133	135	98.4	79.7	51.3	27.1	12.9	5.19	3.12	2.36	2.04
95	1.35	1.51	1.35	1.60	1.61	1.69	1.24	7.22	5.69	4.07	2.07	2.78	1.93	1.65	1.47	1.58	1.47	1.41	1.35
100	1.80	1.49	1.52	1.06	0.83	0.79	0.79	0.81	0.84	0.98	1.19	1.22	2.54	3.07	2.71	2.19	1.81	1.67	1.78
105	2.67	2.26	2.66	1.74	1.20	0.99	1.11	1.11	1.25	1.52	2.58	1.90	3.30	3.01	3.07	2.52	2.17	1.99	2.22
110	2.63	2.38	2.47	1.76	1.43	1.24	1.46	1.44	1.58	1.93	2.08	2.01	3.25	2.92	3.02	2.78	2.45	2.35	2.52
115	2.51	2.23	2.11	2.08	1.71	1.57	1.82	1.78	1.96	2.31	2.30	2.23	3.36	3.08	3.23	3.12	2.85	2.92	3.01
120	2.93	2.54	2.52	2.29	2.07	2.07	2.29	2.23	2.37	2.56	2.76	2.61	3.79	3.64	3.90	3.78	3.53	3.66	3.73
125	3.49	2.99	2.97	2.82	2.60	2.68	2.83	2.77	2.87	3.12	3.28	3.09	4.61	4.45	4.65	4.83	4.72	4.73	4.78
130	3.82	3.42	3.41	3.31	3.32	3.27	3.42	3.35	3.51	3.71	3.74	3.45	5.27	5.17	5.50	5.80	6.12	6.23	6.28
135	4.11	3.99	3.92	3.82	4.01	4.04	4.18	4.10	4.19	4.26	4.26	4.03	6.23	6.05	6.27	6.72	6.99	7.08	7.18
140	4.85	4.63	4.49	4.39	4.66	4.78	4.80	4.73	4.82	4.80	4.73	4.78	6.70	6.69	7.09	7.46	7.67	7.73	7.78
145	5.19	5.09	4.90	4.88	5.24	5.37	5.36	5.29	5.32	5.39	5.36	5.47	7.69	7.50	7.74	8.05	8.36	8.42	8.43
150	5.84	5.68	5.48	5.56	5.61	5.79	5.83	5.84	5.94	5.80	5.74	5.67	8.00	8.11	8.09	8.66	8.78	8.90	8.91
155	6.45	6.42	6.31	5.97	6.21	6.29	6.24	6.24	6.35	6.71	6.63	6.26	8.85	8.62	8.90	8.94	9.28	9.61	9.49
160	6.85	6.81	6.78	6.59	6.79	7.17	7.01	7.23	7.02	6.99	7.36	7.12	9.78	9.49	9.45	9.70	9.73	9.84	9.83
165	7.46	7.48	7.55	7.57	7.41	7.25	7.08	7.38	7.36	7.72	7.84	7.60	9.40	9.43	9.45	9.76	10.1	10.4	10.3
170	8.11	8.14	8.13	8.14	8.11	8.11	8.00	8.26	8.40	8.23	8.01	7.94	9.69	9.68	9.70	9.71	9.79	10.1	10.2
175	8.97	8.89	8.66	8.33	8.16	8.10	7.97	8.06	8.15	8.19	8.19	8.29	9.82	9.97	10.1	10.2	10.2	9.99	9.69
180	9.34	9.34	9.34	9.34	9.34	9.34	9.34	9.34	9.34	9.34	9.34	9.34	9.06	9.06	9.06	9.06	9.06	9.06	9.06

C Range: 0 - 360DEG
 C Interval: 15.0DEG
 Test Speed: HIGH
 Temperature: 25.1DEG
 Operators: Alan Wang
 Test Date: 04 June 2021

γ Range: 0 - 180DEG
 γ Interval: 1.0DEG
 Test System: EVERFINE GO-R5000_V2 SYSTEM V2.00.442T2
 Humidity: 47.8%
 Test Distance: 2.500m [K=1.0462]
 Remarks:

LUMINOUS DISTRIBUTION INTENSITY DATA

Test:U:120.00V I:1.3308A P:159.47W PF:0.9986 Freq:60.00Hz Lamp Flux:22605x1 lm		
NAME: ASD Lighting Corp	TYPE: LED	WEIGHT:
SPEC.: ASD-WHB5M-2D16550-MSR	DIM.:	SERIAL No.:
MFR.: ASD Lighting Corp	SUR.:	Shielding Angle:

Table--2

UNIT: cd

C(DEG) γ (DEG)	285	300	315	330	345														
0	9885	9885	9885	9885	9885														
5	9819	9823	9830	9838	9851														
10	9679	9691	9707	9729	9753														
15	9477	9494	9526	9565	9597														
20	9176	9206	9253	9309	9357														
25	8737	8787	8851	8934	9011														
30	8097	8179	8276	8396	8509														
35	7060	7251	7409	7576	7759														
40	5475	5722	5918	6210	6554														
45	3985	4469	4441	4400	4860														
50	3101	3574	3545	3085	3478														
55	2461	2508	2661	2514	2764														
60	1845	1581	1903	2065	2229														
65	1374	1117	1406	1485	1680														
70	1004	978	1119	1001	1211														
75	714	799	801	729	875														
80	418	475	452	532	544														
85	89.1	104	128	154	201														
90	1.61	1.68	1.99	2.42	2.66														
95	1.36	1.42	1.56	1.54	1.39														
100	1.94	2.07	2.35	2.85	2.55														
105	2.26	2.44	2.69	2.98	2.88														
110	2.57	2.74	2.96	2.92	2.88														
115	3.06	3.15	3.26	3.40	3.14														
120	3.83	3.86	4.13	3.98	3.68														
125	4.96	5.07	4.94	4.70	4.29														
130	6.38	6.06	5.81	5.62	5.04														
135	7.01	6.77	6.50	6.32	5.83														
140	7.65	7.55	7.28	7.03	6.51														
145	8.44	8.38	7.98	7.66	7.18														
150	8.84	8.72	8.90	8.50	7.92														
155	9.72	9.28	8.76	9.03	8.25														
160	9.68	9.77	9.70	9.54	8.51														
165	10.4	10.3	10.2	9.87	8.65														
170	9.90	9.85	9.61	9.46	8.61														
175	9.64	9.69	9.72	9.43	8.95														
180	9.06	9.06	9.06	9.06	9.06														

C Range: 0 - 360DEG
 C Interval: 15.0DEG
 Test Speed: HIGH
 Temperature: 25.1DEG
 Operators: Alan Wang
 Test Date: 04 June 2021

γ Range: 0 - 180DEG
 γ Interval: 1.0DEG
 Test System: EVERFINE GO-R5000_V2 SYSTEM V2.00.442T2
 Humidity: 47.8%
 Test Distance: 2.500m [K=1.0462]
 Remarks: