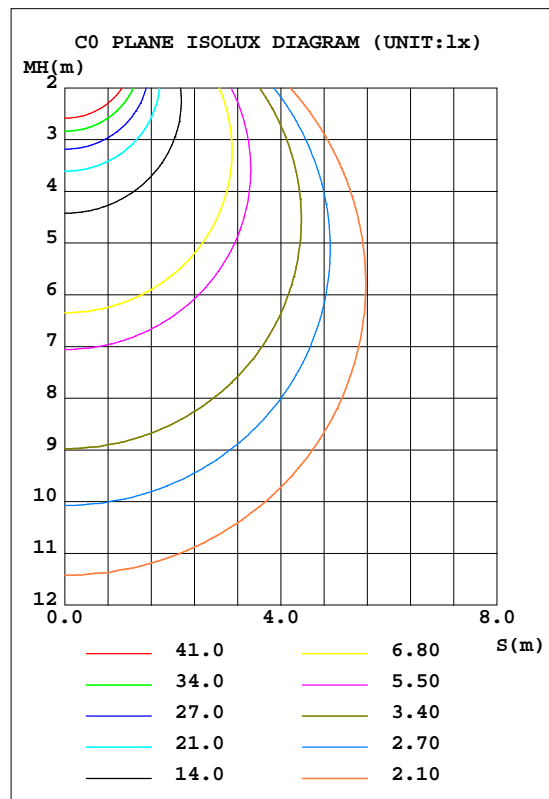
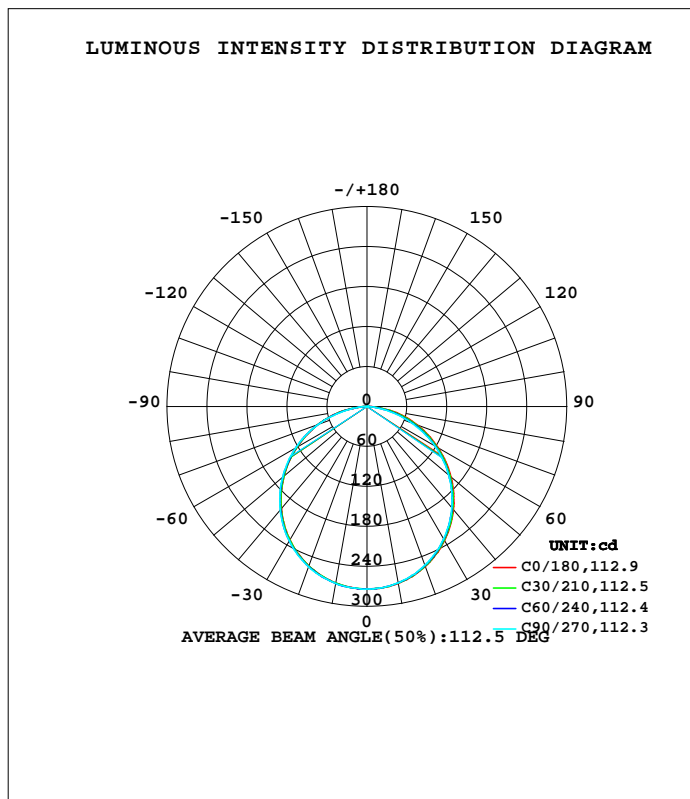


LUMINAIRE PHOTOMETRIC TEST REPORT

Test:U:120.20V I:0.0955A P:11.370W PF:0.9800 Freq:59.98Hz Lamp Flux:784.184x1 lm		
NAME:	TYPE:	WEIGHT:
SPEC.:	DIM.:	SERIAL No.:
MFR.: ASD LIGHTNG CORP	SUR.: 0.09*0.09	Shielding Angle:

DATA OF LAMP		PHOTOMETRIC DATA Eff: 68.97 lm/W			
MODELASD	JBS-4D12AC(4000K)	I <sub>max</sub> (cd)	274.2	S/MH(C0/180)	1.26
NOMINAL POWER(W)	12	LOR(%)	100.0	S/MH(C90/270)	1.27
RATED VOLTAGE(V)	120	TOTAL FLUX(lm)	784.18	h UP, DN(C0-180)	0.2,49.3
NOMINAL FLUX(lm)	784.184	CIE CLASS	DIRECT	h UP, DN(C180-360)	0.2,50.4
LAMPS INSIDE	1	h up(%)	0.4	CIBSE SHR NOM	1.25
TEST VOLTAGE(V)	120.0	h down(%)	99.6	CIBSE SHR MAX	1.35



C Range: 0 - 360DEG  
 C Interval: 30.0DEG  
 Test Speed: HIGH  
 Temperature:25.3DEG  
 Operators:  
 Test Date:2022-6-3

g Range: 0 - 180DEG  
 g Interval: 1.0DEG  
 Test System:EVERFINE GO-2000B\_V1 SYSTEM V2.00.426  
 Humidity:65.0%  
 Test Distance:8.600m [K=1.1628]  
 Remarks:

## ZONAL FLUX DIAGRAM

## ZONAL FLUX DIAGRAM:

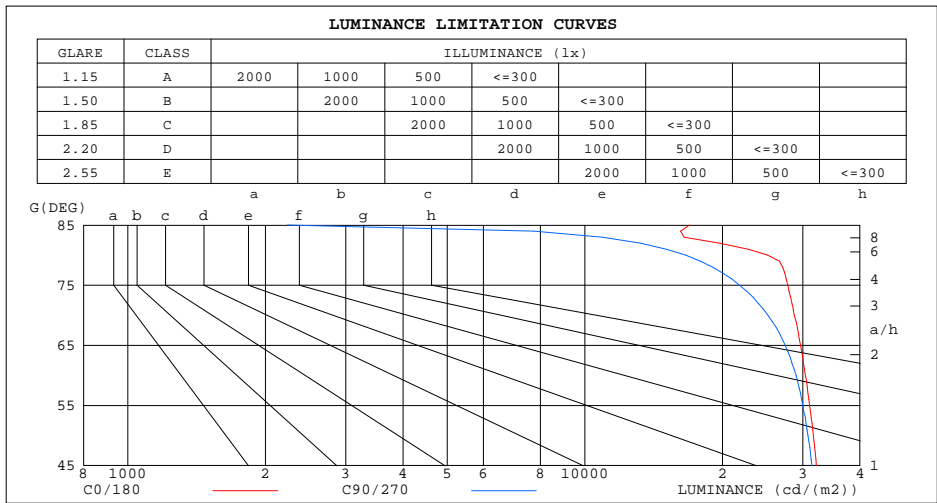
g	C0	C45	C90	C135	C180	C225	C270	C315	g	F zone	F total	%lum,lamp
10	269.7	269.1	268.6	268.6	269.1	269.2	269.9	269.9	0- 10	25.93	25.93	3.31,3.31
20	255.8	254.6	253.8	253.6	254.7	255.3	256.0	256.3	10- 20	74.30	100.2	12.8,12.8
30	232.8	231.0	230.1	229.5	231.3	232.4	233.2	233.6	20- 30	112.6	212.9	27.1,27.1
40	201.7	199.8	198.4	197.6	199.9	201.3	202.7	202.9	30- 40	135.7	348.6	44.5,44.5
50	164.8	162.1	160.2	159.8	162.7	163.6	165.3	165.8	40- 50	140.7	489.3	62.4,62.4
60	123.2	119.8	117.3	117.3	120.6	121.9	123.4	124.0	50- 60	127.2	616.5	78.6,78.6
70	79.68	74.68	69.63	72.20	77.06	77.12	76.51	79.31	60- 70	97.50	714.0	91,91
80	35.33	29.19	23.37	26.68	34.21	31.28	29.12	33.17	70- 80	55.80	769.8	98.2,98.2
90	0.0580	0.0143	0.0070	0.0071	0.0142	0.0212	0.0216	0.0107	80- 90	11.49	781.3	99.6,99.6
100	0.1339	0.0984	0.1198	0.0843	0.1621	0.1268	0.0492	0.1125	90-100	0.0520	781.3	99.6,99.6
110	0.2955	0.2462	0.2675	0.2287	0.4731	0.4725	0.2462	0.2534	100-110	0.2191	781.6	99.7,99.7
120	0.5419	0.3977	0.4152	0.3975	1.028	0.6122	0.4783	0.4188	110-120	0.4166	782.0	99.7,99.7
130	0.7111	0.5348	0.5701	0.5385	0.9933	0.6870	0.6120	0.5187	120-130	0.5078	782.5	99.8,99.8
140	0.7374	0.6453	0.7741	0.7211	0.7044	0.6677	0.7364	0.6158	130-140	0.5159	783.0	99.8,99.8
150	0.7766	0.7284	0.9560	0.8008	0.8242	0.7294	0.8934	0.7030	140-150	0.4591	783.5	99.9,99.9
160	0.8169	0.8214	1.176	0.9077	0.9017	0.8012	0.8502	0.7811	150-160	0.3800	783.8	100,100
170	0.9154	0.8881	1.006	1.059	0.9620	0.8341	0.8484	0.8748	160-170	0.2611	784.1	100,100
180	1.000	0.9606	0.9146	0.9393	0.9719	0.9571	0.9286	1.006	170-180	0.0892	784.2	100,100
DEG	LUMINOUS INTENSITY:cd									UNIT:lm		

C Range: 0 - 360DEG  
C Interval: 30.0DEG  
Test Speed: HIGH  
Temperature:25.3DEG  
Operators:  
Test Date:2022-6-3

g Range: 0 - 180DEG  
g Interval: 1.0DEG  
Test System:EVERFINE GO-2000B\_V1 SYSTEM V2.00.426  
Humidity:65.0%  
Test Distance:8.600m [K=1.1628]  
Remarks:

LUMINANCE LIMITATION CURVES

Test:U:120.20V I:0.0955A P:11.370W PF:0.9800 Freq:59.98Hz Lamp Flux:784.184x1 lm		
NAME:	TYPE:	WEIGHT:
SPEC.:	DIM.:	SERIAL No.:
MFR.: ASD LIGHTNG CORP	SUR.: 0.09*0.09	Shielding Angle:



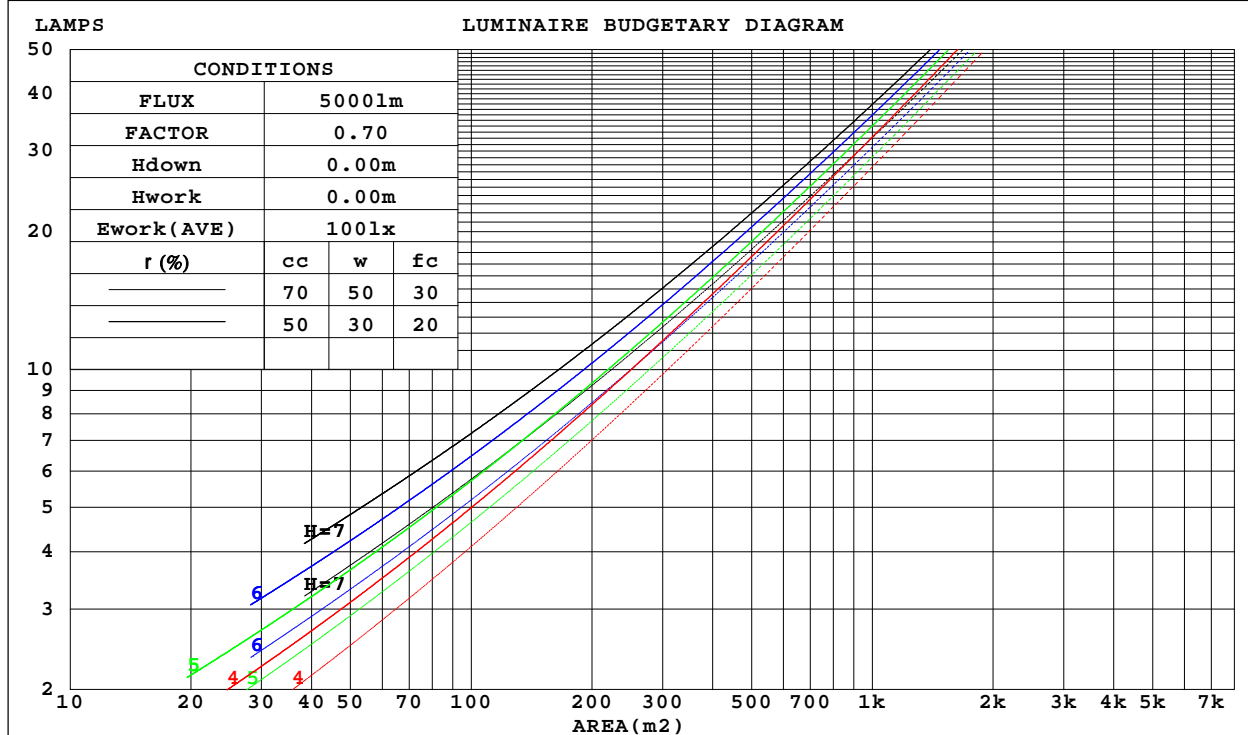
C Range: 0 - 360DEG  
 C Interval: 30.0DEG  
 Test Speed: HIGH  
 Temperature:25.3DEG  
 Operators:  
 Test Date:2022-6-3

g Range: 0 - 180DEG  
 g Interval: 1.0DEG  
 Test System:EVERFINE GO-2000B\_V1 SYSTEM V2.00.426  
 Humidity:65.0%  
 Test Distance:8.600m [K=1.1628]  
 Remarks:

CU AND LUMINAIRE BUDGETARY ESTIMATE DIAGRAM

Test:U:120.20V I:0.0955A P:11.370W PF:0.9800 Freq:59.98Hz Lamp Flux:784.184x1 lm		
NAME:	TYPE:	WEIGHT:
SPEC.:	DIM.:	SERIAL No.:
MFR.: ASD LIGHTNG CORP	SUR.: 0.09*0.09	Shielding Angle:

r cc	80%			70%			50%			30%			10%			0
r w	50%	30%	10%	50%	30%	10%	50%	30%	10%	50%	30%	10%	50%	30%	10%	0
r fc	20%			20%			20%			20%			20%			0
RCR	RCR:Room Cavity Ratio						Coefficients of Utilization(CU)									
0.0	1.19	1.19	1.19	1.16	1.16	1.16	1.11	1.11	1.11	1.06	1.06	1.06	1.02	1.02	1.02	.00
1.0	1.04	.00	.96	1.02	.98	.94	.97	.94	.91	.93	.91	.88	.90	.88	.86	.84
2.0	.91	.84	.78	.89	.82	.77	.85	.80	.75	.82	.77	.73	.79	.75	.72	.69
3.0	.79	.71	.65	.78	.70	.64	.75	.68	.63	.72	.66	.62	.69	.65	.61	.58
4.0	.70	.61	.55	.69	.61	.54	.66	.59	.53	.64	.58	.53	.62	.56	.52	.50
5.0	.63	.54	.47	.62	.53	.47	.59	.52	.46	.57	.51	.46	.55	.50	.45	.43
6.0	.56	.47	.41	.55	.47	.41	.54	.46	.40	.52	.45	.40	.50	.44	.40	.38
7.0	.51	.42	.36	.50	.42	.36	.49	.41	.36	.47	.40	.35	.46	.40	.35	.33
8.0	.47	.38	.32	.46	.38	.32	.45	.37	.32	.43	.37	.32	.42	.36	.31	.30
9.0	.43	.35	.29	.42	.34	.29	.41	.34	.29	.40	.33	.29	.39	.33	.28	.27
10.0	.39	.32	.26	.39	.31	.26	.38	.31	.26	.37	.30	.26	.36	.30	.26	.24



C Range: 0 - 360DEG  
 C Interval: 30.0DEG  
 Test Speed: HIGH  
 Temperature:25.3DEG  
 Operators:  
 Test Date:2022-6-3

g Range: 0 - 180DEG  
 g Interval: 1.0DEG  
 Test System:EVERFINE GO-2000B\_V1 SYSTEM V2.00.426  
 Humidity:65.0%  
 Test Distance:8.600m [K=1.1628]  
 Remarks:

WEC AND CCEC

Test:U:120.20V I:0.0955A P:11.370W PF:0.9800 Freq:59.98Hz Lamp Flux:784.184x1 lm		
NAME:	TYPE:	WEIGHT:
SPEC.:	DIM.:	SERIAL No.:
MFR.: ASD LIGHTNG CORP	SUR.: 0.09*0.09	Shielding Angle:

r cc	80%			70%			50%			30%			10%			0
r w	50%	30%	10%	50%	30%	10%	50%	30%	10%	50%	30%	10%	50%	30%	10%	0
r fc	20%			20%			20%			20%			20%			0
RCR	RCR:Room Cavity Ratio						Wall Exitance Coefficients(WEC)									
0.0																
1.0	.306	.174	.055	.299	.171	.054	.286	.164	.052	.273	.158	.051	.262	.152	.049	
2.0	.290	.159	.049	.284	.156	.048	.272	.151	.047	.261	.147	.046	.251	.142	.045	
3.0	.269	.143	.043	.264	.141	.043	.253	.137	.042	.243	.133	.041	.234	.130	.040	
4.0	.249	.129	.038	.244	.128	.038	.234	.124	.037	.226	.121	.037	.218	.118	.036	
5.0	.230	.117	.034	.226	.116	.034	.217	.113	.033	.210	.111	.033	.202	.108	.033	
6.0	.213	.107	.031	.210	.106	.030	.202	.104	.030	.195	.101	.030	.189	.099	.030	
7.0	.199	.098	.028	.195	.097	.028	.189	.095	.027	.182	.094	.027	.177	.092	.027	
8.0	.186	.091	.025	.182	.090	.025	.177	.088	.025	.171	.087	.025	.166	.085	.025	
9.0	.174	.084	.023	.171	.083	.023	.166	.082	.023	.161	.081	.023	.156	.079	.023	
10.0	.164	.078	.022	.161	.078	.022	.156	.077	.022	.152	.075	.021	.147	.074	.021	

r cc	80%			70%			50%			30%			10%			0
r w	50%	30%	10%	50%	30%	10%	50%	30%	10%	50%	30%	10%	50%	30%	10%	0
r fc	20%			20%			20%			20%			20%			0
RCR	RCR:Room Cavity Ratio						Ceiling Cavity Exitance Coefficients(CCEC)									
0.0	.193	.193	.193	.165	.165	.165	.113	.113	.113	.065	.065	.065	.021	.021	.021	
1.0	.183	.159	.137	.157	.136	.118	.107	.094	.082	.062	.054	.048	.020	.017	.015	
2.0	.175	.135	.101	.150	.116	.087	.103	.080	.061	.059	.047	.036	.019	.015	.012	
3.0	.167	.117	.077	.143	.101	.067	.098	.070	.047	.057	.041	.028	.018	.013	.009	
4.0	.160	.104	.061	.137	.090	.053	.094	.063	.037	.054	.037	.022	.018	.012	.007	
5.0	.152	.093	.050	.131	.081	.044	.090	.056	.031	.052	.033	.018	.017	.011	.006	
6.0	.145	.085	.042	.125	.074	.037	.086	.052	.026	.050	.030	.015	.016	.010	.005	
7.0	.138	.078	.036	.119	.068	.031	.082	.048	.022	.048	.028	.013	.015	.009	.004	
8.0	.132	.072	.032	.113	.063	.028	.079	.044	.020	.046	.026	.012	.015	.009	.004	
9.0	.126	.067	.028	.108	.059	.025	.075	.041	.017	.044	.024	.010	.014	.008	.003	
10.0	.120	.063	.025	.104	.055	.022	.072	.039	.016	.042	.023	.009	.014	.007	.003	

C Range: 0 - 360DEG  
 C Interval: 30.0DEG  
 Test Speed: HIGH  
 Temperature:25.3DEG  
 Operators:  
 Test Date:2022-6-3

g Range: 0 - 180DEG  
 g Interval: 1.0DEG  
 Test System:EVERFINE GO-2000B\_V1 SYSTEM V2.00.426  
 Humidity:65.0%  
 Test Distance:8.600m [K=1.1628]  
 Remarks:

UGR(Unified Glare Rating) Table

Test:U:120.20V I:0.0955A P:11.370W PF:0.9800 Freq:59.98Hz Lamp Flux:784.184x1 lm										
NAME:					TYPE:			WEIGHT:		
SPEC.:					DIM.:			SERIAL No.:		
MFR.: ASD LIGHTNG CORP					SUR.: 0.09*0.09			Shielding Angle:		
ceiling/cavity	0.7	0.7	0.5	0.5	0.3	0.7	0.7	0.5	0.5	0.3
walls	0.5	0.3	0.5	0.3	0.3	0.5	0.3	0.5	0.3	0.3
working plane	0.2	0.2	0.2	0.2	0.2	0.2	0.2	0.2	0.2	0.2
Room dimensions	Viewed crosswise					Viewed endwise				
x = 2H y = 2H	24.1	25.7	24.5	26.1	26.4	23.8	25.5	24.2	25.8	26.1
3H	26.0	27.5	26.4	27.8	28.2	25.6	27.0	25.9	27.4	27.7
4H	26.8	28.2	27.2	28.5	28.9	26.1	27.5	26.5	27.9	28.3
6H	27.4	28.7	27.8	29.0	29.4	26.5	27.8	26.9	28.1	28.5
8H	27.5	28.7	27.9	29.1	29.6	26.5	27.8	27.0	28.1	28.6
12H	27.6	28.8	28.0	29.1	29.6	26.5	27.7	27.0	28.1	28.5
4H 2H	24.7	26.1	25.1	26.5	26.9	24.5	25.9	24.9	26.2	26.6
3H	26.9	28.0	27.3	28.4	28.9	26.4	27.6	26.8	28.0	28.4
4H	27.8	28.8	28.2	29.2	29.7	27.1	28.1	27.5	28.5	29.0
6H	28.5	29.4	28.9	29.9	30.3	27.5	28.4	28.0	28.9	29.3
8H	28.7	29.5	29.1	30.0	30.5	27.6	28.4	28.1	28.9	29.4
12H	28.8	29.5	29.3	30.0	30.5	27.6	28.4	28.1	28.8	29.3
8H 4H	28.0	28.9	28.5	29.4	29.8	27.4	28.2	27.8	28.7	29.2
6H	28.9	29.6	29.4	30.1	30.6	27.9	28.6	28.4	29.1	29.6
8H	29.1	29.8	29.6	30.3	30.8	28.0	28.6	28.5	29.2	29.6
12H	29.3	29.8	29.8	30.3	30.9	28.0	28.6	28.5	29.1	29.6
12H 4H	28.1	28.8	28.5	29.3	29.8	27.4	28.2	27.9	28.7	29.1
6H	28.9	29.6	29.4	30.0	30.6	27.9	28.6	28.5	29.1	29.6
8H	29.2	29.8	29.7	30.3	30.8	28.1	28.6	28.6	29.1	29.7
CIE190: 2010										

CIE190: 2010  
Area: 0.0081 m2

C Range: 0 - 360DEG  
C Interval: 30.0DEG  
Test Speed: HIGH  
Temperature:25.3DEG  
Operators:  
Test Date:2022-6-3

g Range: 0 - 180DEG  
g Interval: 1.0DEG  
Test System:EVERFINE GO-2000B\_V1 SYSTEM V2.00.426  
Humidity:65.0%  
Test Distance:8.600m [K=1.1628]  
Remarks:

## UTILIZATION FACTORS TABLE

Test:U:120.20V I:0.0955A P:11.370W PF:0.9800 Freq:59.98Hz Lamp Flux:784.184x1 lm		
NAME:	TYPE:	WEIGHT:
SPEC.:	DIM.:	SERIAL No.:
MFR.: ASD LIGHTNG CORP	SUR.: 0.09*0.09	Shielding Angle:

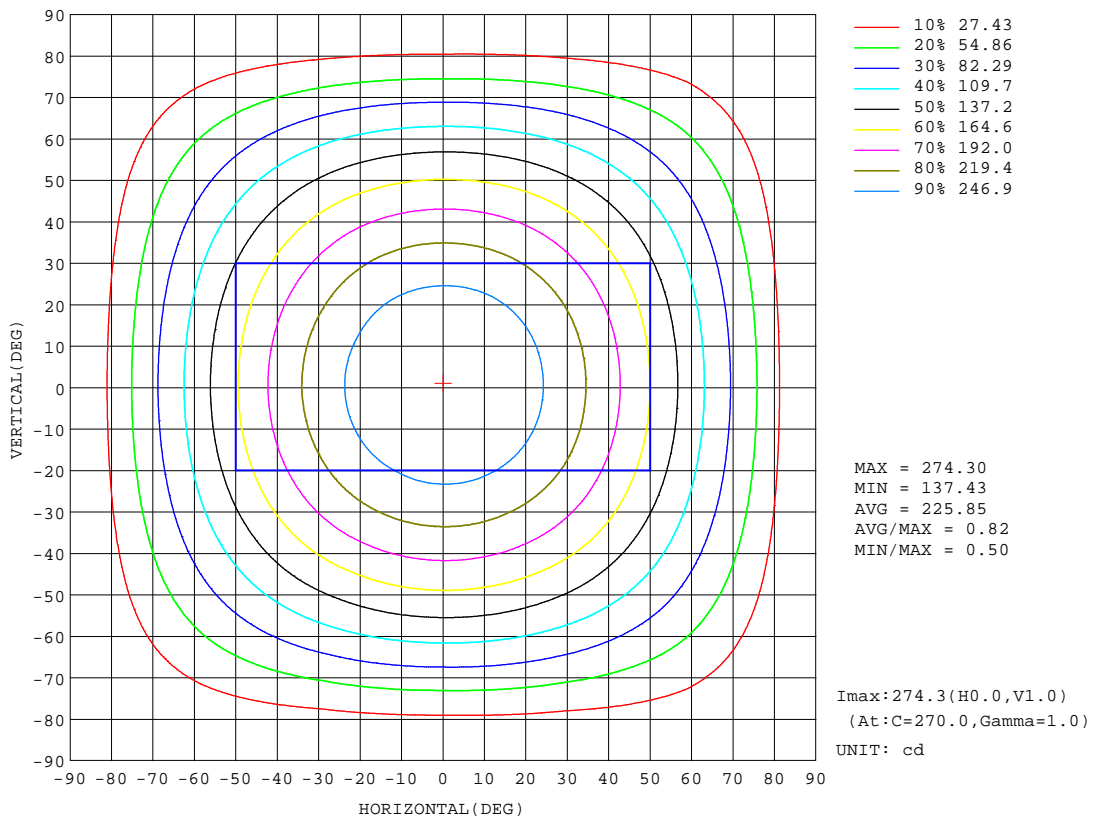
REFLECTANCE										
Ceiling	0.8	0.8	0.8	0.7	0.7	0.7	0.5	0.5	0.5	0
Walls	0.7	0.5	0.3	0.7	0.5	0.3	0.7	0.5	0.3	0
Working plane	0.2	0.2	0.2	0.2	0.2	0.2	0.2	0.2	0.2	0
ROOM INDEX	UTILIZATION FACTORS (PERCENT) $k(RI) \times RCR = 5$									
k = 0.60	57	46	39	57	46	39	55	45	39	32
0.80	67	56	48	66	55	48	65	55	48	41
1.00	76	65	57	75	64	57	72	66	57	49
1.25	83	73	65	82	72	65	79	70	64	57
1.50	88	78	71	86	77	71	83	75	70	62
2.00	95	86	80	93	85	79	90	83	78	70
2.50	99	91	85	97	90	84	93	87	82	74
3.00	102	95	90	100	94	89	96	91	87	78
4.00	106	101	96	104	99	95	100	95	92	83
5.00	109	104	100	106	102	98	102	98	95	86
ROOM INDEX	UF(total)									Direct
According to DIN EN 13032-2 2004			Suspended				SHRNOM = 1.25			

C Range: 0 - 360DEG  
 C Interval: 30.0DEG  
 Test Speed: HIGH  
 Temperature: 25.3DEG  
 Operators:  
 Test Date: 2022-6-3

g Range: 0 - 180DEG  
 g Interval: 1.0DEG  
 Test System: EVERFINE GO-2000B\_V1 SYSTEM V2.00.426  
 Humidity: 65.0%  
 Test Distance: 8.600m [K=1.1628]  
 Remarks:

ISOCANDELA DIAGRAM

Test:U:120.20V I:0.0955A P:11.370W PF:0.9800 Freq:59.98Hz Lamp Flux:784.184x1 lm		
NAME:	TYPE:	WEIGHT:
SPEC.:	DIM.:	SERIAL No.:
MFR.: ASD LIGHTNG CORP	SUR.: 0.09*0.09	Shielding Angle:



C Range: 0 - 360DEG  
 C Interval: 30.0DEG  
 Test Speed: HIGH  
 Temperature: 25.3DEG  
 Operators:  
 Test Date: 2022-6-3

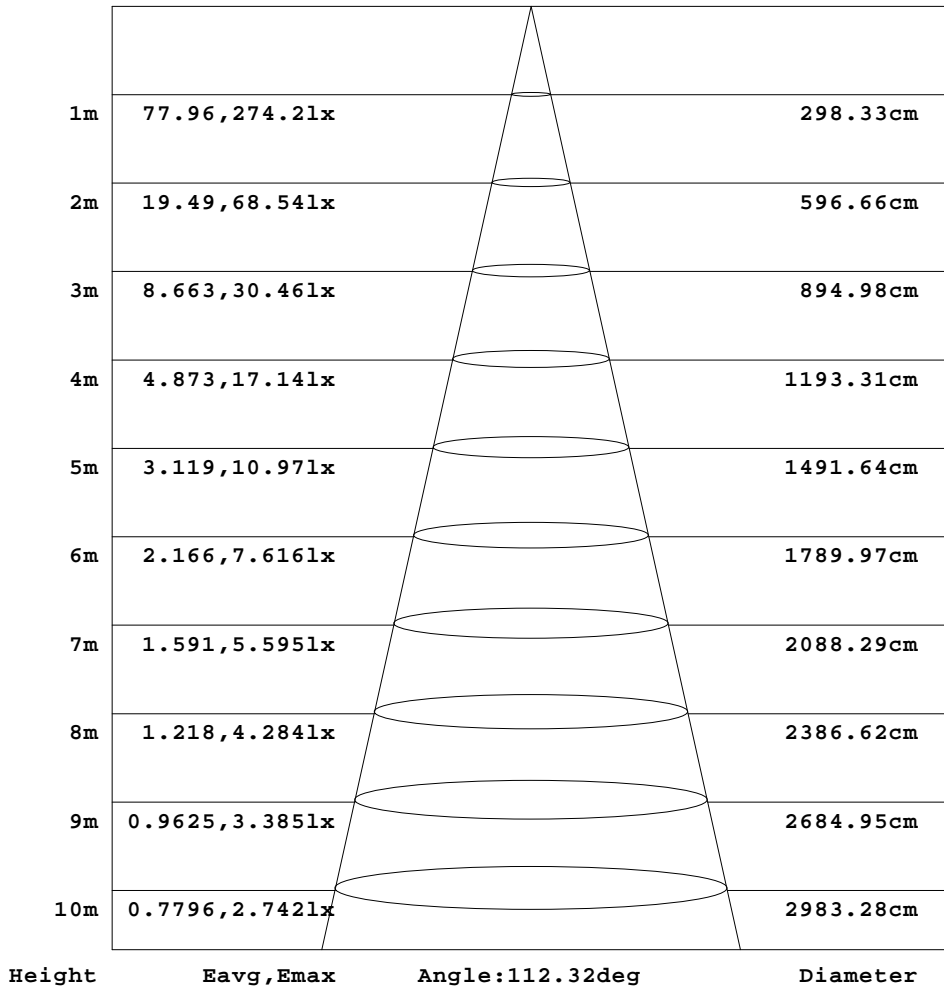
g Range: 0 - 180DEG  
 g Interval: 1.0DEG  
 Test System: EVERFINE GO-2000B\_V1 SYSTEM V2.00.426  
 Humidity: 65.0%  
 Test Distance: 8.600m [K=1.1628]  
 Remarks:



AAI Figure

Test:U:120.20V I:0.0955A P:11.370W PF:0.9800 Freq:59.98Hz Lamp Flux:784.184x1 lm		
NAME:	TYPE:	WEIGHT:
SPEC.:	DIM.:	SERIAL No.:
MFR.: ASD LIGHTNG CORP	SUR.: 0.09*0.09	Shielding Angle:

Flux out:580.8 lm



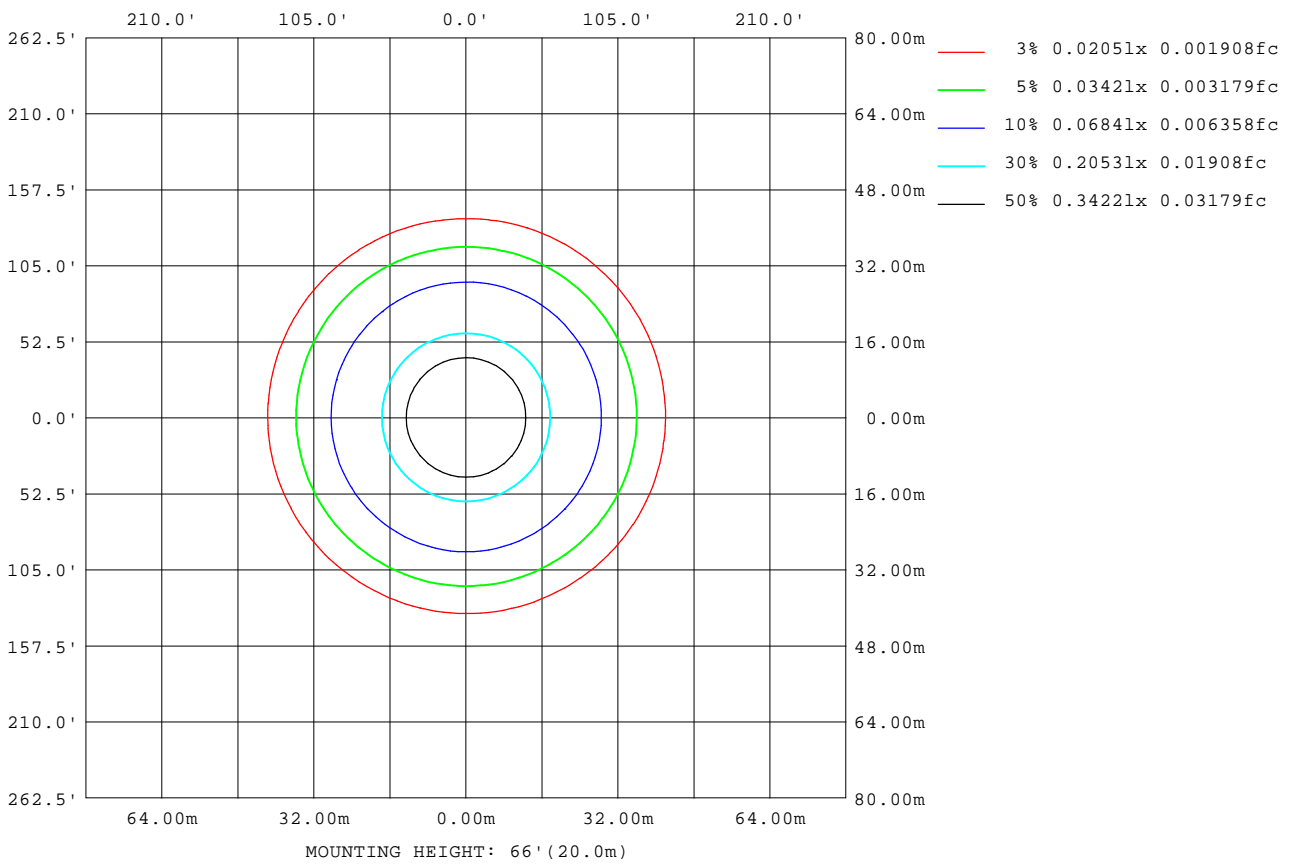
Note:The Curves indicate the illuminated area and the average illumination when the luminaire is at different distance.

C Range: 0 - 360DEG  
 C Interval: 30.0DEG  
 Test Speed: HIGH  
 Temperature:25.3DEG  
 Operators:  
 Test Date:2022-6-3

g Range: 0 - 180DEG  
 g Interval: 1.0DEG  
 Test System:EVERFINE GO-2000B\_V1 SYSTEM V2.00.426  
 Humidity:65.0%  
 Test Distance:8.600m [K=1.1628]  
 Remarks:

ISOLUX DIAGRAM

Test:U:120.20V I:0.0955A P:11.370W PF:0.9800 Freq:59.98Hz Lamp Flux:784.184x1 lm		
NAME:	TYPE:	WEIGHT:
SPEC.:	DIM.:	SERIAL No.:
MFR.: ASD LIGHTNG CORP	SUR.: 0.09*0.09	Shielding Angle:



C Range: 0 - 360DEG  
 C Interval: 30.0DEG  
 Test Speed: HIGH  
 Temperature:25.3DEG  
 Operators:  
 Test Date:2022-6-3

g Range: 0 - 180DEG  
 g Interval: 1.0DEG  
 Test System:EVERFINE GO-2000B\_V1 SYSTEM V2.00.426  
 Humidity:65.0%  
 Test Distance:8.600m [K=1.1628]  
 Remarks:

## LED Avg.L Report

Test:U:120.20V I:0.0955A P:11.370W PF:0.9800 Freq:59.98Hz Lamp Flux:784.184x1 lm		
NAME:	TYPE:	WEIGHT:
SPEC.:	DIM.:	SERIAL No.:
MFR.: ASD LIGHTNG CORP	SUR.: 0.09*0.09	Shielding Angle:

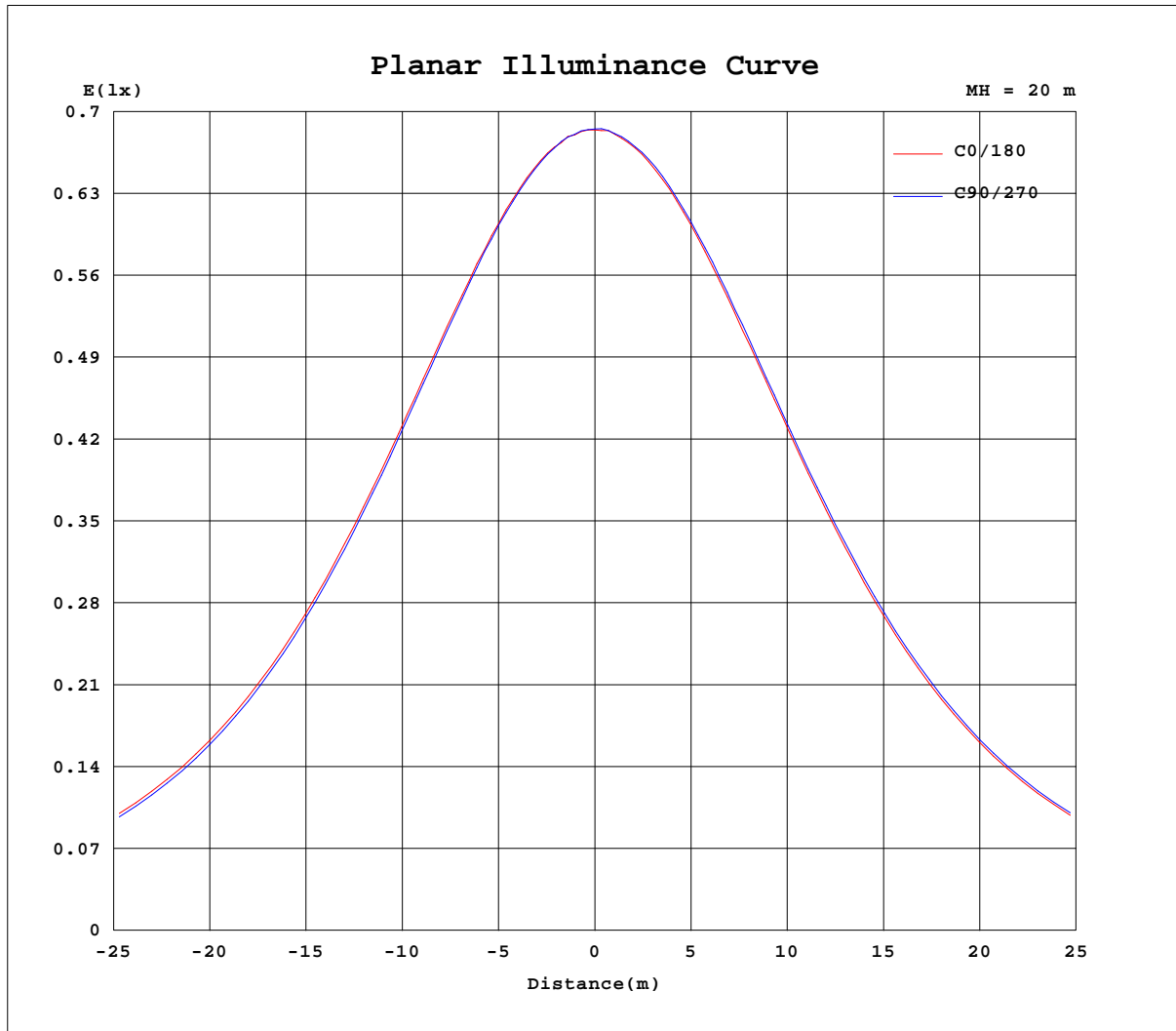
AvgL	cd/m2
L_0~180(65)av	29287
L_0~180(75)av	27146
L_0~180(85)av	14893
L_90~270(65)av	28391
L_90~270(75)av	23314
L_90~270(85)av	6992
L_45(65)av	28799
L_45(75)av	25169
L_45(85)av	12050

Standard: GB/T 29293-2012

C Range: 0 - 360DEG  
C Interval: 30.0DEG  
Test Speed: HIGH  
Temperature:25.3DEG  
Operators:  
Test Date:2022-6-3

g Range: 0 - 180DEG  
g Interval: 1.0DEG  
Test System:EVERFINE GO-2000B\_V1 SYSTEM V2.00.426  
Humidity:65.0%  
Test Distance:8.600m [K=1.1628]  
Remarks:

Planar Illuminance Curve



C Range: 0 - 360DEG  
 C Interval: 30.0DEG  
 Test Speed: HIGH  
 Temperature: 25.3DEG  
 Operators:  
 Test Date: 2022-6-3

g Range: 0 - 180DEG  
 g Interval: 1.0DEG  
 Test System: EVERFINE GO-2000B\_V1 SYSTEM V2.00.426  
 Humidity: 65.0%  
 Test Distance: 8.600m [K=1.1628]  
 Remarks:

LUMINOUS DISTRIBUTION INTENSITY DATA

Test:U:120.20V I:0.0955A P:11.370W PF:0.9800 Freq:59.98Hz Lamp Flux:784.184x1 lm		
NAME:	TYPE:	WEIGHT:
SPEC.:	DIM.:	SERIAL No.:
MFR.: ASD LIGHTNG CORP	SUR.: 0.09*0.09	Shielding Angle:

Table--1

UNIT: cd

C(DEG) g (DEG)	0	30	60	90	120	150	180	210	240	270	300	330						
0	274	274	274	274	274	274	274	274	274	274	274	274						
5	273	273	273	273	272	273	273	273	273	273	273	273						
10	270	269	269	269	268	269	269	269	270	270	270	270						
15	264	263	263	262	262	262	263	263	264	264	264	264						
20	256	255	254	254	253	254	255	255	256	256	256	256						
25	245	245	243	243	242	243	244	245	245	246	246	246						
30	233	232	230	230	229	230	231	232	233	233	234	233						
35	218	217	215	215	214	215	216	217	219	219	219	219						
40	202	201	199	198	197	198	200	201	202	203	203	203						
45	184	183	180	180	179	180	182	182	184	185	185	185						
50	165	163	161	160	159	160	163	163	164	165	166	165						
55	144	142	140	139	138	140	142	142	144	145	145	145						
60	123	121	118	117	116	118	121	121	123	123	124	124						
65	102	99.3	95.7	94.0	93.8	96.3	98.9	99.3	100	100	102	102						
70	79.7	77.2	72.2	69.6	70.3	74.2	77.1	77.1	77.1	76.5	78.6	80.0						
75	58.3	55.0	48.2	45.7	46.5	52.0	55.5	54.9	53.3	52.0	54.8	57.6						
80	35.3	32.7	25.6	23.4	23.8	29.5	34.2	32.5	30.0	29.1	31.2	35.1						
85	12.0	11.0	4.65	1.57	2.96	8.37	9.06	10.2	8.92	8.30	9.26	12.0						
90	0.06	0.01	0.02	0.01	0.01	0.00	0.01	0.04	0.00	0.02	0.00	0.02						
95	0.05	0.05	0.01	0.06	0.01	0.03	0.07	0.03	0.06	0.06	0.07	0.00						
100	0.13	0.11	0.08	0.12	0.08	0.09	0.16	0.13	0.13	0.05	0.12	0.11						
105	0.20	0.19	0.15	0.20	0.15	0.16	0.30	0.34	0.27	0.15	0.20	0.26						
110	0.30	0.26	0.23	0.27	0.23	0.23	0.47	0.57	0.37	0.25	0.27	0.23						
115	0.42	0.34	0.29	0.34	0.35	0.30	0.88	0.59	0.57	0.36	0.39	0.35						
120	0.54	0.43	0.37	0.42	0.41	0.38	1.03	0.63	0.60	0.48	0.46	0.38						
125	0.63	0.51	0.44	0.47	0.48	0.46	1.00	0.70	0.60	0.58	0.50	0.46						
130	0.71	0.57	0.50	0.57	0.58	0.50	0.99	0.79	0.59	0.61	0.54	0.49						
135	0.77	0.64	0.58	0.68	0.70	0.59	1.01	0.77	0.67	0.69	0.60	0.54						
140	0.74	0.66	0.63	0.77	0.79	0.65	0.70	0.71	0.62	0.74	0.64	0.59						
145	0.77	0.70	0.67	0.93	0.78	0.73	0.77	0.69	0.72	0.73	0.69	0.63						
150	0.78	0.73	0.72	0.96	0.79	0.81	0.82	0.69	0.77	0.89	0.72	0.68						
155	0.80	0.77	0.80	0.84	0.82	0.89	0.87	0.70	1.02	0.98	0.91	0.73						
160	0.82	0.82	0.82	1.18	0.86	0.96	0.90	0.74	0.86	0.85	0.78	0.78						
165	0.86	1.16	0.86	1.31	0.91	1.32	0.96	0.80	0.81	0.85	0.87	0.81						
170	0.92	0.92	0.86	1.01	0.97	1.15	0.96	0.83	0.84	0.85	0.89	0.86						
175	0.97	0.93	0.86	1.01	0.99	0.98	0.96	0.88	0.95	0.87	0.96	0.91						
180	1.00	1.00	0.92	0.91	0.96	0.91	0.97	0.93	0.99	0.93	0.96	1.05						

C Range: 0 - 360DEG  
 C Interval: 30.0DEG  
 Test Speed: HIGH  
 Temperature:25.3DEG  
 Operators:  
 Test Date:2022-6-3

g Range: 0 - 180DEG  
 g Interval: 1.0DEG  
 Test System:EVERFINE GO-2000B\_V1 SYSTEM V2.00.426  
 Humidity:65.0%  
 Test Distance:8.600m [K=1.1628]  
 Remarks: