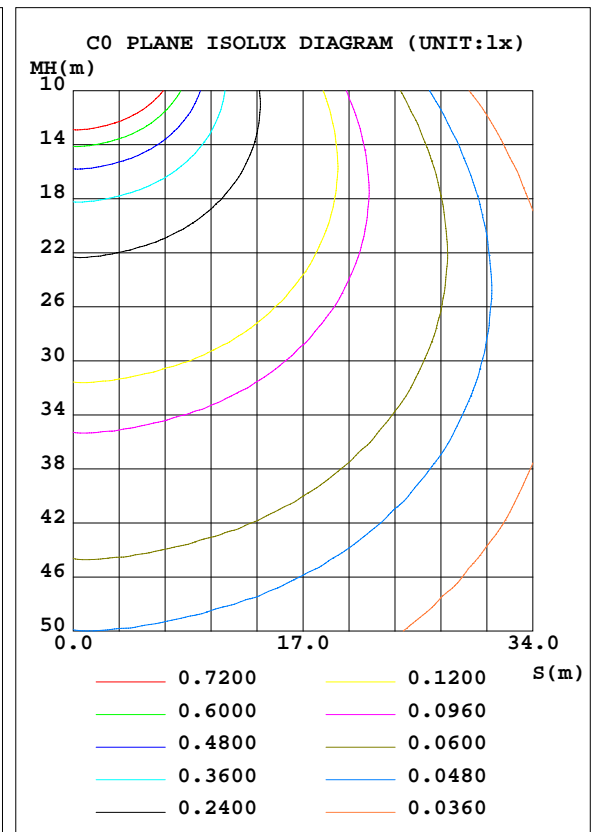
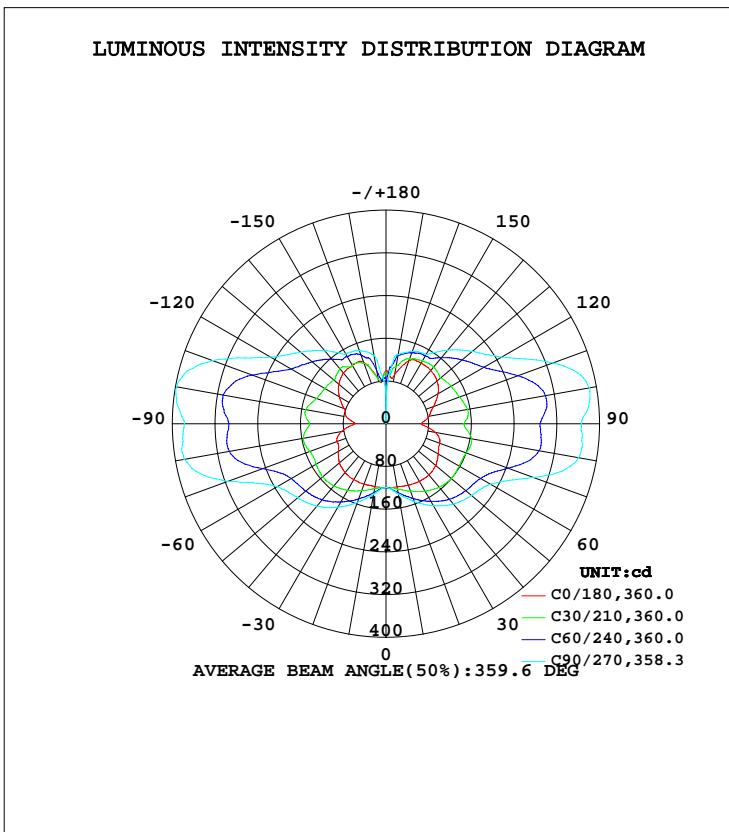


LUMINAIRE PHOTOMETRIC TEST REPORT

Test:U:277.00V I:0.1202A P:30.100W PF:0.9039 Freq:60.00Hz Lamp Flux:2318.5x1 lm		
NAME:	TYPE:LED	WEIGHT:
SPEC.:	DIM.:	SERIAL No.:
MFR.: ASD Lighting corp	SUR.:	Shielding Angle:

DATA OF LAMP		PHOTOMETRIC DATA Eff: 77.03 lm/W			
MODEL	SD-LWS27-MV-36D30CC-BK	I <sub>max</sub> (cd)	398.8	S/MH(C0/180)	1.54
NOMINAL POWER(W)	30	LOR(%)	100.0	S/MH(C90/270)	2.33
RATED VOLTAGE(V)	120-277	TOTAL FLUX(lm)	2318.5	η UP, DN(C0-180)	24.5,25.1
NOMINAL FLUX(lm)	2318.5	CIE CLASS	DIFFUSE	η UP, DN(C180-360)	24.7,25.7
LAMPS INSIDE	1	η up(%)	49.2	CIBSE SHR NOM	2.00
TEST VOLTAGE(V)	277	η down(%)	50.8	CIBSE SHR MAX	2.00



C Range: 0 - 360DEG  
 C Interval: 15.0DEG  
 Test Speed: HIGH  
 Temperature: 25.0DEG  
 Operators: Alan Wang  
 Test Date: 08 May 2023

γ Range: 0 - 180DEG  
 γ Interval: 1.0DEG  
 Test System: EVERFINE GO-R5000\_V2 SYSTEM V2.00.416  
 Humidity: 43.5%  
 Test Distance: 2.500m [K=1.0390]  
 Remarks:

## ZONAL FLUX DIAGRAM

## ZONAL FLUX DIAGRAM:

$\gamma$	C0	C45	C90	C135	C180	C225	C270	C315	$\gamma$	$\Phi$ zone	$\Phi$ total	%lum,lamp
10	120.1	128.1	133.5	127.5	119.6	127.6	133.6	127.7	0- 10	11.80	11.80	0.51,0.51
20	122.4	143.1	155.3	141.1	120.4	142.7	156.8	144.0	10- 20	38.09	49.89	2.15,2.15
30	124.4	158.4	177.3	156.4	120.8	158.4	180.2	161.2	20- 30	68.71	118.6	5.12,5.12
40	124.9	171.9	195.9	168.3	119.3	171.1	201.5	175.8	30- 40	101.6	220.2	9.5,9.5
50	121.4	180.3	208.7	176.1	113.6	177.0	215.5	185.0	40- 50	132.3	352.4	15.2,15.2
60	112.9	183.1	226.1	178.4	103.0	178.9	235.9	190.1	50- 60	157.3	509.7	22,22
70	107.2	199.0	293.8	195.2	97.54	194.6	315.4	209.8	60- 70	186.4	696.1	30,30
80	93.99	222.9	365.6	222.1	84.83	223.6	384.0	235.7	70- 80	233.8	930.0	40.1,40.1
90	65.76	213.9	365.6	214.2	57.94	215.4	377.6	225.4	80- 90	246.7	1177	50.8,50.8
100	82.12	224.7	387.1	224.0	75.19	226.4	398.2	234.2	90-100	249.2	1426	61.5,61.5
110	95.22	201.3	333.0	195.2	83.66	196.7	345.2	205.1	100-110	235.8	1662	71.7,71.7
120	112.7	177.4	249.9	171.2	100.8	168.9	250.2	177.8	110-120	187.8	1849	79.8,79.8
130	124.9	162.1	210.9	157.6	115.3	155.0	208.2	162.4	120-130	150.2	2000	86.2,86.2
140	130.7	144.3	180.1	140.9	124.3	139.3	178.1	146.3	130-140	120.3	2120	91.4,91.4
150	131.6	144.3	150.1	141.1	126.2	140.8	151.0	146.3	140-150	90.23	2210	95.3,95.3
160	125.6	137.0	144.1	136.0	122.4	129.7	145.8	140.5	150-160	63.57	2274	98.1,98.1
170	93.16	120.6	131.5	99.32	86.12	88.01	129.6	130.6	160-170	35.44	2309	99.6,99.6
180	100.1	90.55	37.77	88.63	98.91	93.62	54.36	84.63	170-180	9.407	2319	100,100
DEG	LUMINOUS INTENSITY:cd									UNIT:lm		

Conical surface Flux(90deg): 282.78 lm

%lum = 12.2%

%lamp = 12.2%

Conical surface Flux(120deg): 509.73 lm

%lum = 22.0%

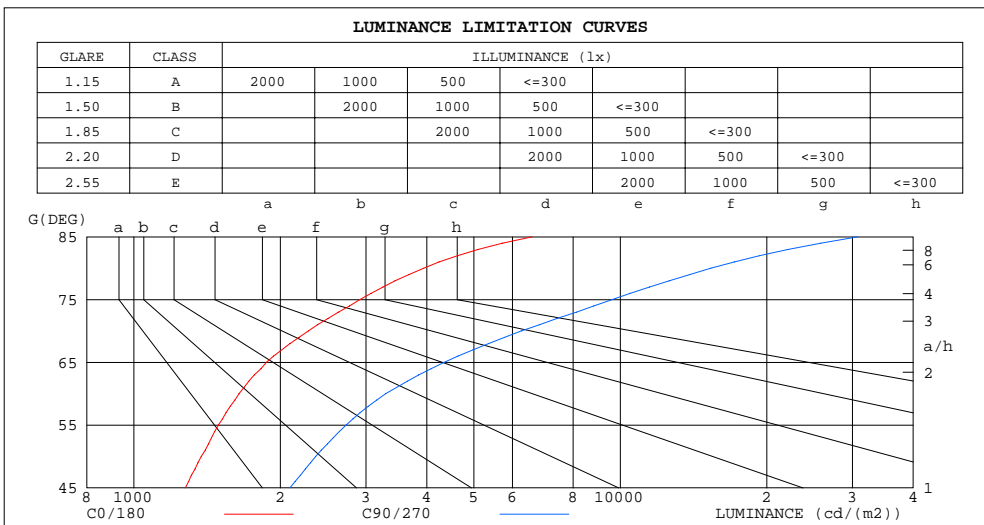
%lamp = 22.0%

C Range: 0 - 360DEG  
 C Interval: 15.0DEG  
 Test Speed: HIGH  
 Temperature: 25.0DEG  
 Operators: Alan Wang  
 Test Date: 08 May 2023

$\gamma$  Range: 0 - 180DEG  
 $\gamma$  Interval: 1.0DEG  
 Test System: EVERFINE GO-R5000\_V2 SYSTEM V2.00.416  
 Humidity: 43.5%  
 Test Distance: 2.500m [K=1.0390]  
 Remarks:

LUMINANCE LIMITATION CURVES

Test:U:277.00V I:0.1202A P:30.100W PF:0.9039 Freq:60.00Hz Lamp Flux:2318.5x1 lm		
NAME:	TYPE:LED	WEIGHT:
SPEC.:	DIM.:	SERIAL No.:
MFR.: ASD Lighting corp	SUR.:	Shielding Angle:



LUMINANCE cd/(m2)		
G(DEG)	C0/180	C90/270
85	6586	30767
80	3944	15342
75	2915	9624
70	2284	6259
65	1873	4347
60	1645	3294
55	1492	2732
50	1376	2365
45	1275	2092

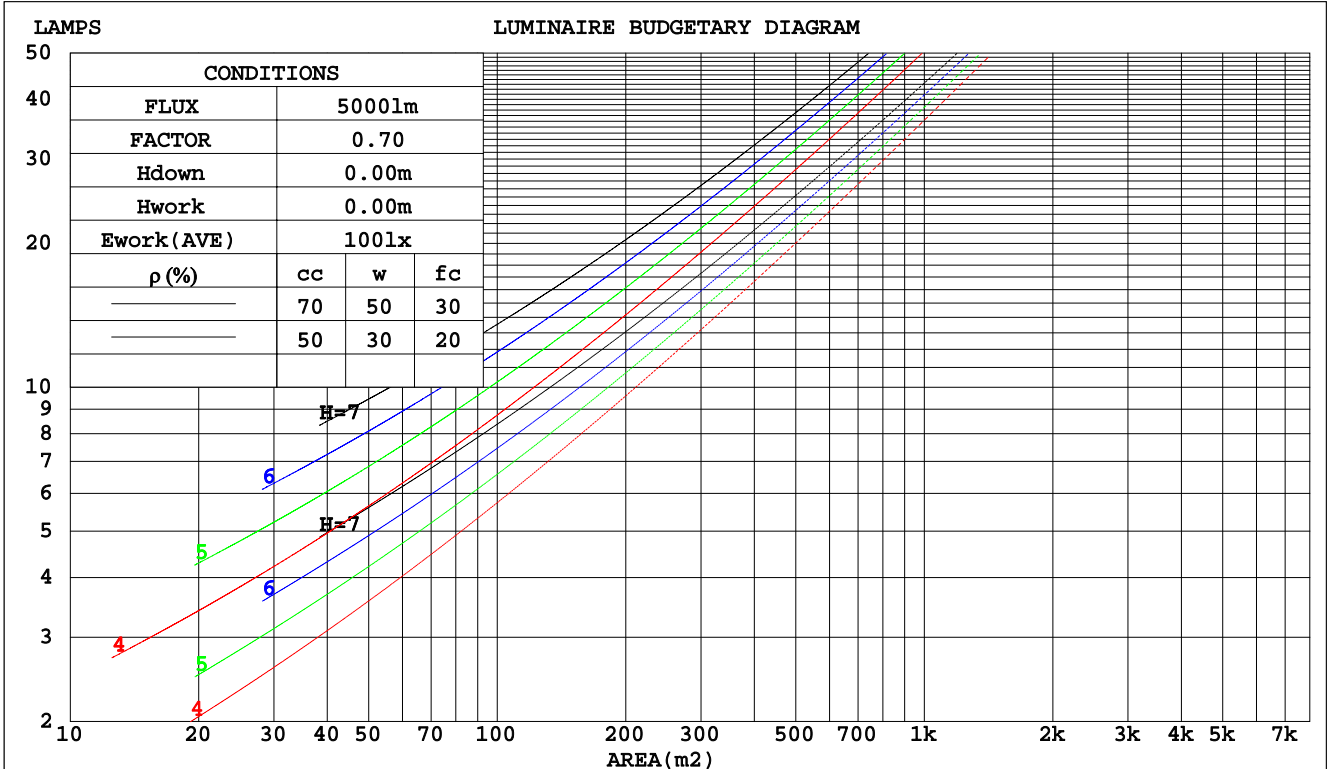
C Range: 0 - 360DEG  
 C Interval: 15.0DEG  
 Test Speed: HIGH  
 Temperature: 25.0DEG  
 Operators: Alan Wang  
 Test Date: 08 May 2023

$\gamma$  Range: 0 - 180DEG  
 $\gamma$  Interval: 1.0DEG  
 Test System: EVERFINE GO-R5000\_V2 SYSTEM V2.00.416  
 Humidity: 43.5%  
 Test Distance: 2.500m [K=1.0390]  
 Remarks:

CU AND LUMINAIRE BUDGETARY ESTIMATE DIAGRAM

Test:U:277.00V I:0.1202A P:30.100W PF:0.9039 Freq:60.00Hz Lamp Flux:2318.5x1 lm		
NAME:	TYPE:LED	WEIGHT:
SPEC.:	DIM.:	SERIAL No.:
MFR.: ASD Lighting corp	SUR.:	Shielding Angle:

pcc	80%			70%			50%			30%			10%			0
	50%	30%	10%	50%	30%	10%	50%	30%	10%	50%	30%	10%	50%	30%	10%	0
pw																
pfc	20%			20%			20%			20%			20%			0
RCR	RCR:Room Cavity Ratio						Coefficients of Utilization(CU)									
0.0	1.07	1.07	1.07	.99	.99	.99	.84	.84	.84	.70	.70	.70	.57	.57	.57	.51
1.0	.86	.80	.75	.79	.74	.69	.66	.62	.58	.53	.50	.47	.42	.40	.37	.32
2.0	.72	.64	.57	.66	.59	.53	.55	.49	.44	.44	.40	.36	.34	.31	.28	.23
3.0	.62	.53	.46	.57	.49	.42	.47	.40	.35	.37	.32	.28	.29	.25	.22	.17
4.0	.54	.45	.37	.49	.41	.34	.41	.34	.29	.33	.27	.23	.25	.21	.18	.14
5.0	.48	.38	.31	.44	.35	.29	.36	.29	.24	.29	.23	.19	.22	.18	.15	.11
6.0	.42	.33	.26	.39	.30	.24	.32	.25	.20	.26	.20	.16	.20	.16	.12	.09
7.0	.38	.29	.23	.35	.27	.21	.29	.22	.17	.23	.18	.14	.18	.14	.11	.08
8.0	.34	.26	.20	.31	.24	.18	.26	.20	.15	.21	.16	.12	.16	.12	.09	.07
9.0	.31	.23	.17	.29	.21	.16	.24	.18	.13	.19	.14	.11	.15	.11	.08	.06
10.0	.28	.21	.15	.26	.19	.14	.22	.16	.12	.18	.13	.10	.14	.10	.07	.05



C Range: 0 - 360DEG  
 C Interval: 15.0DEG  
 Test Speed: HIGH  
 Temperature: 25.0DEG  
 Operators: Alan Wang  
 Test Date: 08 May 2023

γ Range: 0 - 180DEG  
 γ Interval: 1.0DEG  
 Test System: EVERFINE GO-R5000\_V2 SYSTEM V2.00.416  
 Humidity: 43.5%  
 Test Distance: 2.500m [K=1.0390]  
 Remarks:

WEC AND CCEC

Test:U:277.00V I:0.1202A P:30.100W PF:0.9039 Freq:60.00Hz Lamp Flux:2318.5x1 lm		
NAME:	TYPE:LED	WEIGHT:
SPEC.:	DIM.:	SERIAL No.:
MFR.: ASD Lighting corp	SUR.:	Shielding Angle:

ρcc	80%			70%			50%			30%			10%			0
ρw	50%	30%	10%	50%	30%	10%	50%	30%	10%	50%	30%	10%	50%	30%	10%	0
ρfc	20%			20%			20%			20%			20%			0
RCR	RCR:Room Cavity Ratio						Wall Exitance Coefficients(WEC)									
0.0																
1.0	.424	.241	.076	.402	.229	.073	.360	.207	.066	.322	.186	.060	.287	.166	.054	
2.0	.350	.192	.059	.330	.182	.056	.292	.162	.050	.257	.144	.045	.224	.127	.040	
3.0	.303	.161	.048	.285	.153	.046	.250	.135	.041	.218	.119	.037	.188	.104	.032	
4.0	.269	.140	.041	.252	.132	.039	.220	.117	.035	.190	.102	.031	.163	.088	.027	
5.0	.242	.123	.036	.226	.116	.034	.197	.103	.030	.170	.090	.027	.144	.077	.023	
6.0	.220	.110	.032	.206	.104	.030	.179	.092	.027	.153	.080	.023	.130	.068	.020	
7.0	.202	.100	.028	.189	.094	.027	.164	.083	.024	.140	.072	.021	.118	.061	.018	
8.0	.186	.091	.026	.174	.086	.024	.151	.075	.022	.129	.065	.019	.108	.056	.016	
9.0	.173	.084	.023	.162	.079	.022	.140	.069	.020	.120	.060	.017	.100	.051	.015	
10.0	.162	.078	.022	.151	.073	.020	.131	.064	.018	.112	.055	.016	.094	.047	.013	

ρcc	80%			70%			50%			30%			10%			0
ρw	50%	30%	10%	50%	30%	10%	50%	30%	10%	50%	30%	10%	50%	30%	10%	0
ρfc	20%			20%			20%			20%			20%			0
RCR	RCR:Room Cavity Ratio						Ceiling Cavity Exitance Coefficients(CCEC)									
0.0	.566	.566	.566	.483	.483	.483	.330	.330	.330	.190	.190	.190	.061	.061	.061	
1.0	.567	.533	.504	.485	.458	.433	.332	.315	.300	.191	.182	.174	.061	.059	.056	
2.0	.561	.512	.472	.480	.441	.408	.329	.305	.284	.190	.178	.167	.061	.057	.054	
3.0	.554	.497	.452	.475	.429	.392	.326	.298	.275	.188	.174	.162	.060	.057	.053	
4.0	.546	.486	.440	.469	.420	.382	.322	.293	.269	.186	.171	.159	.060	.056	.052	
5.0	.539	.477	.431	.463	.413	.375	.319	.288	.265	.185	.169	.157	.060	.055	.052	
6.0	.532	.470	.425	.457	.407	.370	.315	.285	.262	.183	.167	.156	.059	.055	.051	
7.0	.525	.464	.421	.451	.402	.367	.312	.282	.260	.181	.166	.155	.059	.054	.051	
8.0	.518	.458	.417	.446	.398	.364	.309	.279	.258	.180	.165	.154	.058	.054	.051	
9.0	.512	.454	.415	.441	.394	.362	.306	.277	.257	.178	.164	.153	.058	.054	.051	
10.0	.506	.450	.413	.436	.391	.360	.303	.275	.256	.177	.163	.153	.057	.053	.051	

C Range: 0 - 360DEG  
 C Interval: 15.0DEG  
 Test Speed: HIGH  
 Temperature: 25.0DEG  
 Operators: Alan Wang  
 Test Date: 08 May 2023

γ Range: 0 - 180DEG  
 γ Interval: 1.0DEG  
 Test System: EVERFINE GO-R5000\_V2 SYSTEM V2.00.416  
 Humidity: 43.5%  
 Test Distance: 2.500m [K=1.0390]  
 Remarks:

UGR(Unified Glare Rating) Table

Test:U:277.00V I:0.1202A P:30.100W PF:0.9039 Freq:60.00Hz Lamp Flux:2318.5x1 lm										
NAME:					TYPE:LED			WEIGHT:		
SPEC.:					DIM.:			SERIAL No.:		
MFR.: ASD Lighting corp					SUR.:			Shielding Angle:		
ceiling/cavity	0.7	0.7	0.5	0.5	0.3	0.7	0.7	0.5	0.5	0.3
walls	0.5	0.3	0.5	0.3	0.3	0.5	0.3	0.5	0.3	0.3
working plane	0.2	0.2	0.2	0.2	0.2	0.2	0.2	0.2	0.2	0.2
Room dimensions	Viewed crosswise					Viewed endwise				
x = 2H y = 2H	10.7	11.8	11.5	12.6	13.8	13.6	14.7	14.4	15.6	16.7
3H	13.3	14.3	14.2	15.2	16.4	17.9	18.9	18.8	19.8	21.0
4H	14.8	15.8	15.7	16.7	17.9	20.5	21.5	21.4	22.4	23.6
6H	16.4	17.3	17.3	18.2	19.4	23.3	24.2	24.2	25.2	26.4
8H	17.1	18.0	18.1	18.9	20.2	24.7	25.6	25.7	26.5	27.8
12H	18.0	18.8	18.9	19.7	21.0	26.3	27.1	27.2	28.0	29.3
4H 2H	12.4	13.4	13.3	14.3	15.5	14.3	15.2	15.2	16.2	17.4
3H	15.2	16.0	16.1	17.0	18.2	18.8	19.6	19.7	20.6	21.8
4H	16.8	17.6	17.7	18.5	19.8	21.6	22.4	22.5	23.3	24.6
6H	18.4	19.1	19.4	20.1	21.4	24.6	25.2	25.5	26.2	27.5
8H	19.2	19.9	20.2	20.8	22.1	26.1	26.7	27.1	27.7	29.0
12H	20.1	20.7	21.0	21.7	23.0	27.7	28.3	28.7	29.3	30.6
8H 4H	18.5	19.2	19.5	20.1	21.4	22.0	22.6	23.0	23.6	24.9
6H	20.4	20.9	21.4	21.9	23.2	25.2	25.8	26.2	26.8	28.1
8H	21.3	21.8	22.3	22.8	24.1	27.0	27.5	28.0	28.5	29.8
12H	22.2	22.7	23.3	23.7	25.1	28.9	29.3	29.9	30.4	31.7
12H 4H	19.2	19.8	20.2	20.8	22.1	22.0	22.6	23.0	23.6	24.9
6H	21.3	21.7	22.3	22.8	24.1	25.4	25.9	26.4	26.9	28.2
8H	22.3	22.7	23.3	23.8	25.1	27.2	27.7	28.2	28.7	30.0
Variations with the observer position at spacings:										
S = 1.0H	+ 0.1 / - 0.1					+ 0.1 / - 0.1				
1.5H	+ 0.2 / - 0.2					+ 0.2 / - 0.3				
2.0H	+ 0.3 / - 0.4					+ 0.3 / - 0.4				

CIE Pub.117, 2319 lm Total Lamp Luminous Flux Corrected (8log(F/F0) = 2.9)  
 Area: 0.13725 m2

C Range: 0 - 360DEG  
 C Interval: 15.0DEG  
 Test Speed: HIGH  
 Temperature: 25.0DEG  
 Operators: Alan Wang  
 Test Date: 08 May 2023

γ Range: 0 - 180DEG  
 γ Interval: 1.0DEG  
 Test System: EVERFINE GO-R5000\_V2 SYSTEM V2.00.416  
 Humidity: 43.5%  
 Test Distance: 2.500m [K=1.0390]  
 Remarks:

UTILIZATION FACTORS TABLE

Test:U:277.00V I:0.1202A P:30.100W PF:0.9039 Freq:60.00Hz Lamp Flux:2318.5x1 lm		
NAME:	TYPE:LED	WEIGHT:
SPEC.:	DIM.:	SERIAL No.:
MFR.: ASD Lighting corp	SUR.:	Shielding Angle:

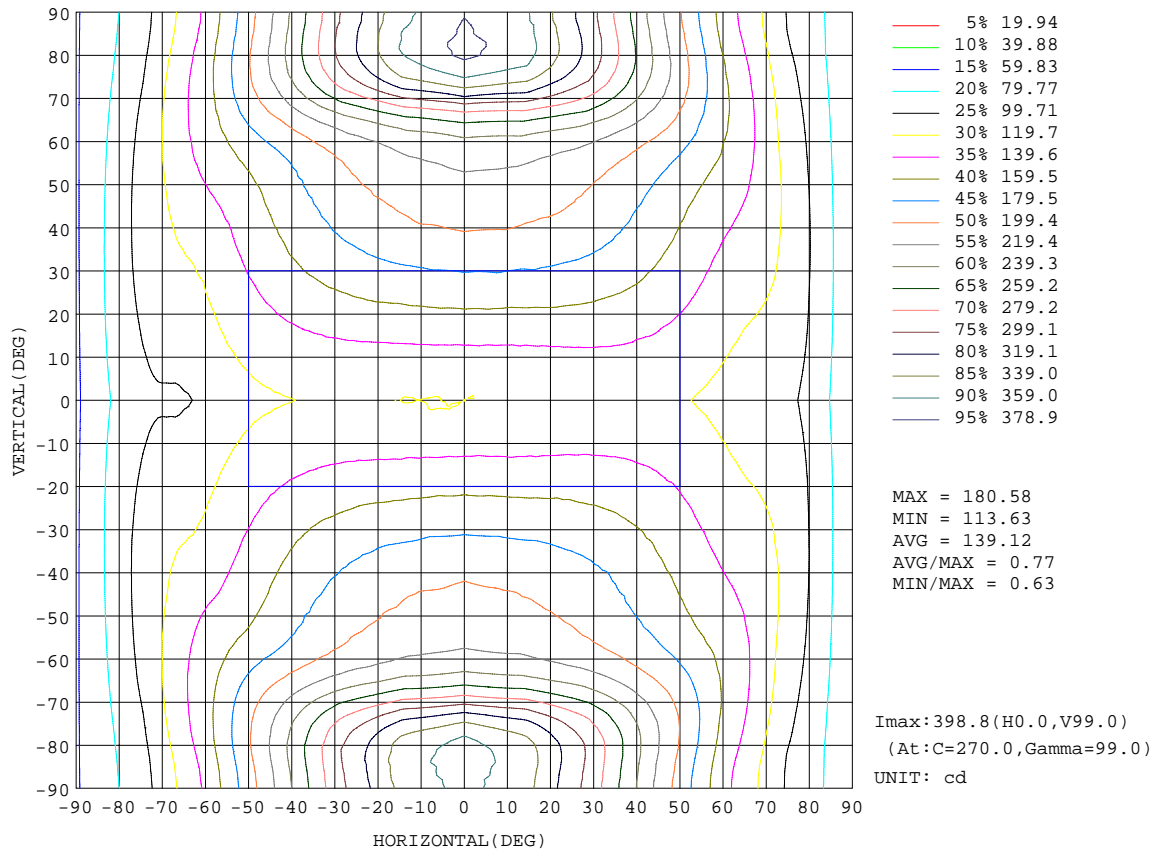
REFLECTANCE										
Ceiling	0.8	0.8	0.8	0.7	0.7	0.7	0.5	0.5	0.5	0
Walls	0.7	0.5	0.3	0.7	0.5	0.3	0.7	0.5	0.3	0
Working plane	0.2	0.2	0.2	0.2	0.2	0.2	0.2	0.2	0.2	0
ROOM INDEX	UTILIZATION FACTORS(PERCENT) $k(RI) \times RCR = 5$									
k = 0.60	36	23	16	34	22	15	30	20	14	7
0.80	44	30	22	41	29	21	37	26	19	9
1.00	51	37	28	48	35	26	42	33	24	12
1.25	58	43	34	54	41	32	47	36	28	15
1.50	63	49	39	59	46	37	50	40	33	17
2.00	71	58	48	66	54	45	56	46	39	21
2.50	76	64	54	70	59	51	59	51	44	24
3.00	80	69	59	74	64	56	62	55	48	27
4.00	85	75	67	79	70	63	66	60	54	30
5.00	89	80	73	82	74	68	69	63	58	33
ROOM INDEX	UF(total)									Direct
According to DIN EN 13032-2 2004			Suspended				SHRNOM = 1.25			

C Range: 0 - 360DEG  
 C Interval: 15.0DEG  
 Test Speed: HIGH  
 Temperature: 25.0DEG  
 Operators: Alan Wang  
 Test Date: 08 May 2023

$\gamma$  Range: 0 - 180DEG  
 $\gamma$  Interval: 1.0DEG  
 Test System: EVERFINE GO-R5000\_V2 SYSTEM V2.00.416  
 Humidity: 43.5%  
 Test Distance: 2.500m [K=1.0390]  
 Remarks:

ISOCANDELA DIAGRAM

Test:U:277.00V I:0.1202A P:30.100W PF:0.9039 Freq:60.00Hz Lamp Flux:2318.5x1 lm		
NAME:	TYPE:LED	WEIGHT:
SPEC.:	DIM.:	SERIAL No.:
MFR.: ASD Lighting corp	SUR.:	Shielding Angle:



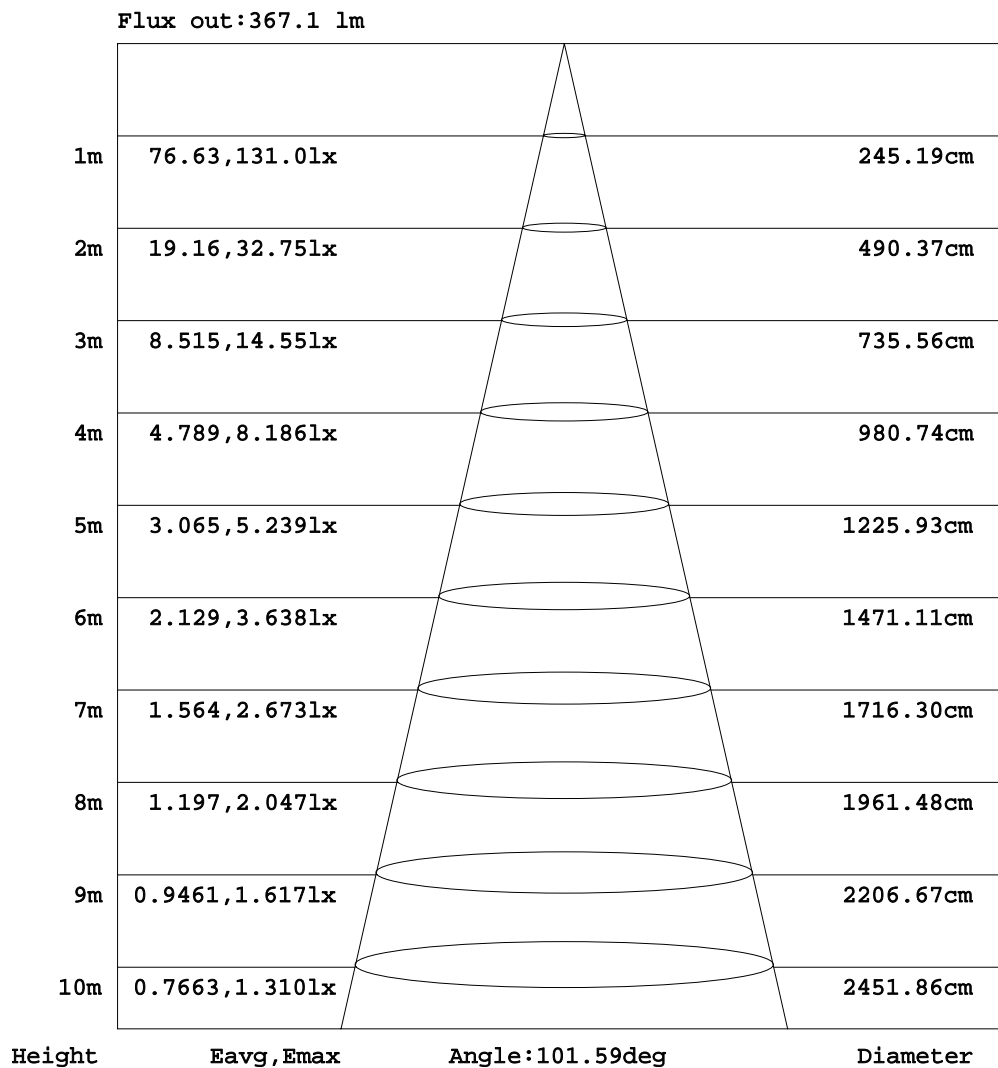
C Range: 0 - 360DEG  
 C Interval: 15.0DEG  
 Test Speed: HIGH  
 Temperature: 25.0DEG  
 Operators: Alan Wang  
 Test Date: 08 May 2023

γ Range: 0 - 180DEG  
 γ Interval: 1.0DEG  
 Test System: EVERFINE GO-R5000\_V2 SYSTEM V2.00.416  
 Humidity: 43.5%  
 Test Distance: 2.500m [K=1.0390]  
 Remarks:



AAI Figure

Test:U:277.00V I:0.1202A P:30.100W PF:0.9039 Freq:60.00Hz Lamp Flux:2318.5x1 lm		
NAME:	TYPE:LED	WEIGHT:
SPEC.:	DIM.:	SERIAL No.:
MFR.: ASD Lighting corp	SUR.:	Shielding Angle:



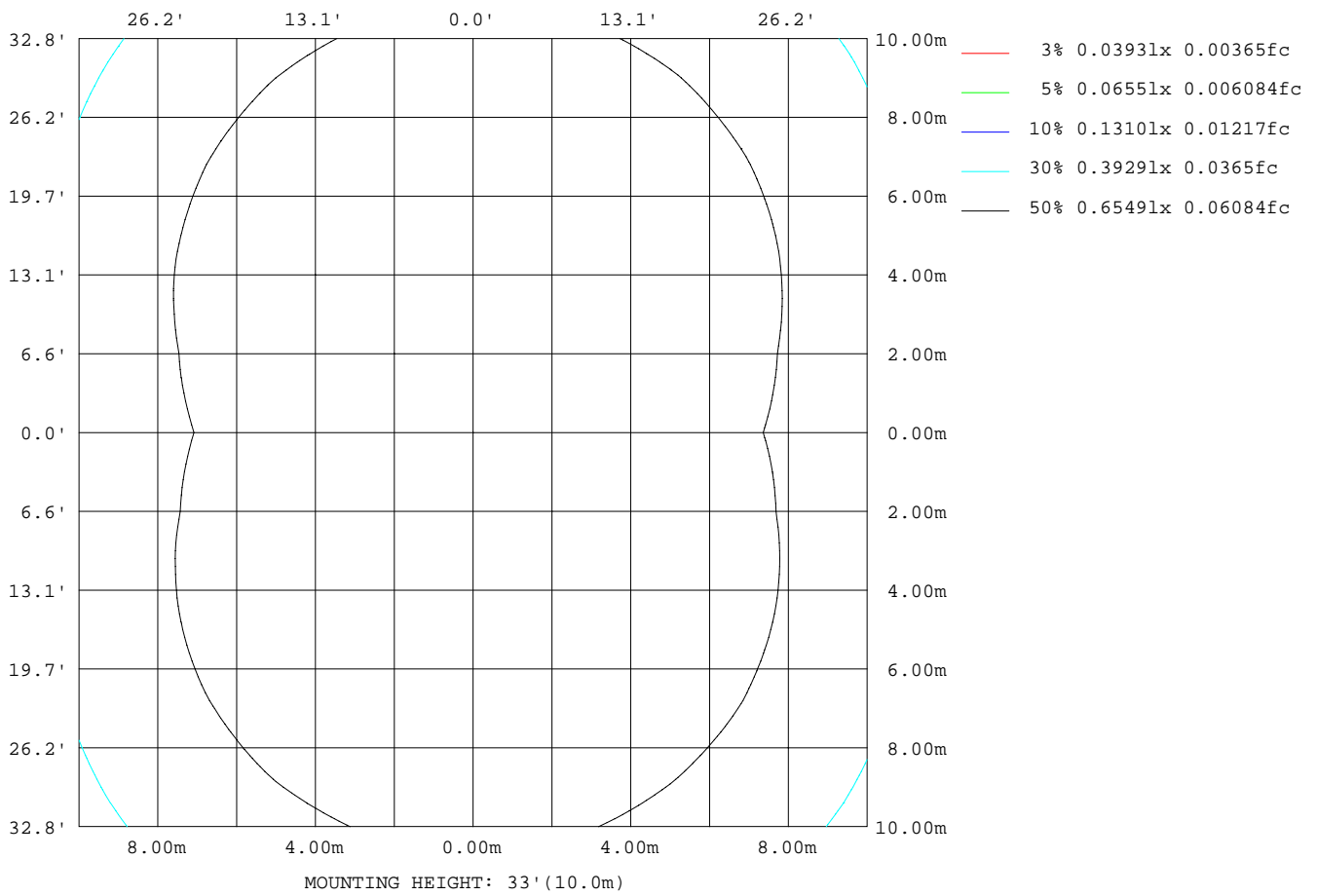
Note:The Curves indicate the illuminated area and the average illumination when the luminaire is at different distance.

C Range: 0 - 360DEG  
 C Interval: 15.0DEG  
 Test Speed: HIGH  
 Temperature: 25.0DEG  
 Operators:Alan Wang  
 Test Date:08 May 2023

γ Range: 0 - 180DEG  
 γ Interval: 1.0DEG  
 Test System:EVERFINE GO-R5000\_V2 SYSTEM V2.00.416  
 Humidity: 43.5%  
 Test Distance:2.500m [K=1.0390]  
 Remarks:

ISOLUX DIAGRAM

Test:U:277.00V I:0.1202A P:30.100W PF:0.9039 Freq:60.00Hz Lamp Flux:2318.5x1 lm		
NAME:	TYPE:LED	WEIGHT:
SPEC.:	DIM.:	SERIAL No.:
MFR.: ASD Lighting corp	SUR.:	Shielding Angle:



C Range: 0 - 360DEG  
 C Interval: 15.0DEG  
 Test Speed: HIGH  
 Temperature: 25.0DEG  
 Operators: Alan Wang  
 Test Date: 08 May 2023

γ Range: 0 - 180DEG  
 γ Interval: 1.0DEG  
 Test System: EVERFINE GO-R5000\_V2 SYSTEM V2.00.416  
 Humidity: 43.5%  
 Test Distance: 2.500m [K=1.0390]  
 Remarks:

## LED Avg.L Report

Test:U:277.00V I:0.1202A P:30.100W PF:0.9039 Freq:60.00Hz Lamp Flux:2318.5x1 lm		
NAME:	TYPE:LED	WEIGHT:
SPEC.:	DIM.:	SERIAL No.:
MFR.: ASD Lighting corp	SUR.:	Shielding Angle:

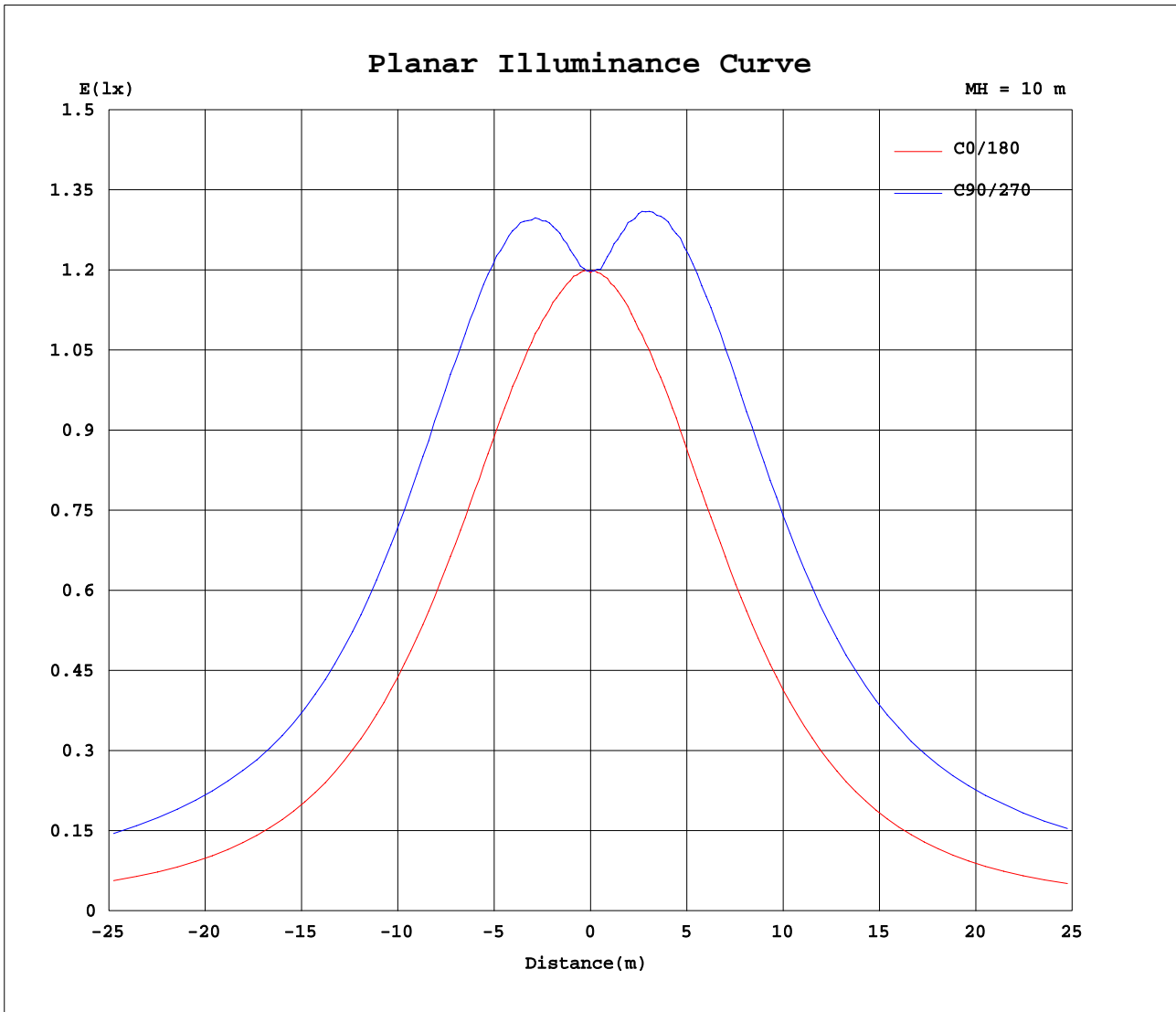
AvgL	cd/m2
L_0~180(65)av	1783
L_0~180(75)av	2778
L_0~180(85)av	6268
L_90~270(65)av	4461
L_90~270(75)av	9885
L_90~270(85)av	31330
L_45(65)av	3232
L_45(75)av	6086
L_45(85)av	18629

Standard: GB/T 29293-2012

C Range: 0 - 360DEG  
C Interval: 15.0DEG  
Test Speed: HIGH  
Temperature: 25.0DEG  
Operators: Alan Wang  
Test Date: 08 May 2023

$\gamma$  Range: 0 - 180DEG  
 $\gamma$  Interval: 1.0DEG  
Test System: EVERFINE GO-R5000\_V2 SYSTEM V2.00.416  
Humidity: 43.5%  
Test Distance: 2.500m [K=1.0390]  
Remarks:

Planar Illuminance Curve



C Range: 0 - 360DEG  
 C Interval: 15.0DEG  
 Test Speed: HIGH  
 Temperature: 25.0DEG  
 Operators: Alan Wang  
 Test Date: 08 May 2023

$\gamma$  Range: 0 - 180DEG  
 $\gamma$  Interval: 1.0DEG  
 Test System: EVERFINE GO-R5000\_V2 SYSTEM V2.00.416  
 Humidity: 43.5%  
 Test Distance: 2.500m [K=1.0390]  
 Remarks:

LUMINOUS DISTRIBUTION INTENSITY DATA

Test:U:277.00V I:0.1202A P:30.100W PF:0.9039 Freq:60.00Hz Lamp Flux:2318.5x1 lm		
NAME:	TYPE:LED	WEIGHT:
SPEC.:	DIM.:	SERIAL No.:
MFR.: ASD Lighting corp	SUR.:	Shielding Angle:

Table--1

UNIT: cd

C(DEG) γ (DEG)	0	15	30	45	60	75	90	105	120	135	150	165	180	195	210	225	240	255	270
0	120	120	120	120	120	120	120	120	120	120	120	120	120	120	120	120	120	120	120
5	120	120	120	122	123	124	124	124	123	122	120	119	120	120	120	122	123	124	124
10	120	121	124	128	131	133	134	133	131	128	124	120	120	120	124	128	131	133	134
15	121	123	129	135	140	143	144	143	139	134	128	122	120	122	128	135	140	144	145
20	122	126	134	143	149	154	155	153	148	141	133	124	120	124	133	143	150	155	157
25	124	130	140	151	158	164	166	164	158	149	138	127	121	127	139	151	160	166	169
30	124	133	146	158	168	175	177	174	167	156	143	129	121	129	144	158	169	177	180
35	125	135	151	166	177	184	187	184	176	163	147	131	121	132	149	165	178	187	191
40	125	137	155	172	185	193	196	192	183	168	151	132	119	133	152	171	186	196	202
45	124	138	158	177	190	199	203	199	189	173	153	132	117	132	154	175	192	204	209
50	121	137	160	180	195	205	209	203	193	176	153	130	114	131	155	177	196	209	215
55	117	136	159	181	198	210	215	209	197	178	153	127	109	128	153	179	200	215	223
60	113	132	159	183	205	220	226	219	202	178	151	123	103	124	151	179	205	226	236
65	109	130	158	188	218	241	252	241	215	183	150	120	98.2	120	150	183	219	249	265
70	107	130	160	199	243	280	294	279	241	195	154	121	97.5	120	152	195	246	292	315
75	104	128	164	214	274	321	342	321	274	212	158	119	93.8	119	157	212	280	336	360
80	94.0	121	163	223	291	344	366	345	291	222	158	112	84.8	112	157	224	298	357	384
85	78.8	108	154	219	291	347	368	347	293	220	151	101	71.2	102	151	221	299	359	382
90	65.8	97.1	146	214	288	343	366	343	290	214	142	90.6	57.9	90.8	143	215	294	352	378
95	73.8	104	154	223	301	359	381	358	301	223	151	98.5	65.1	98.0	151	225	304	367	392
100	82.1	106	155	225	303	364	387	364	304	224	152	102	75.2	102	153	226	310	373	398
105	87.1	104	151	216	290	348	371	347	288	212	146	98.1	79.0	98.3	146	215	296	359	385
110	95.2	104	147	201	263	313	333	311	259	195	139	95.8	83.7	95.2	139	197	267	323	345
115	104	106	143	187	234	271	288	271	231	181	136	97.8	92.2	96.8	135	179	231	274	292
120	113	115	141	177	212	239	250	237	209	171	134	106	101	105	132	169	205	236	250
125	120	122	138	169	198	219	227	216	196	164	132	114	109	112	130	162	192	215	225
130	125	126	134	162	186	204	211	202	184	158	129	119	115	115	127	155	181	200	208
135	129	129	137	153	174	190	196	189	173	150	131	122	120	120	131	148	169	187	194
140	131	129	139	144	162	175	180	175	161	141	134	122	124	122	134	139	158	172	178
145	131	126	139	144	150	160	164	160	148	141	134	120	126	123	130	140	146	158	163
150	132	125	136	144	147	149	150	149	146	141	132	118	126	120	127	141	145	150	151
155	131	122	133	141	146	148	148	147	145	139	130	116	127	119	126	134	143	148	149
160	126	118	130	137	141	144	144	143	141	136	126	110	122	118	121	130	137	143	146
165	110	113	122	132	136	138	138	137	135	125	111	96.0	105	106	103	115	128	135	139
170	93.2	95.2	108	121	130	131	131	130	113	99.3	82.4	83.3	86.1	86.3	85.4	88.0	102	116	130
175	89.4	88.0	93.2	107	107	109	101	91.6	83.8	84.2	83.5	86.8	82.5	82.2	85.0	80.4	80.2	84.2	91.8
180	100	97.9	91.4	90.5	73.8	95.4	37.8	56.2	82.2	88.6	94.4	97.3	98.9	98.7	97.2	93.6	88.1	83.5	54.4

C Range: 0 - 360DEG  
 C Interval: 15.0DEG  
 Test Speed: HIGH  
 Temperature: 25.0DEG  
 Operators: Alan Wang  
 Test Date: 08 May 2023

γ Range: 0 - 180DEG  
 γ Interval: 1.0DEG  
 Test System: EVERFINE GO-R5000\_V2 SYSTEM V2.00.416  
 Humidity: 43.5%  
 Test Distance: 2.500m [K=1.0390]  
 Remarks:

LUMINOUS DISTRIBUTION INTENSITY DATA

Test:U:277.00V I:0.1202A P:30.100W PF:0.9039 Freq:60.00Hz Lamp Flux:2318.5x1 lm		
NAME:	TYPE:LED	WEIGHT:
SPEC.:	DIM.:	SERIAL No.:
MFR.: ASD Lighting corp	SUR.:	Shielding Angle:

Table--2

UNIT: cd

C( DEG) γ (DEG)	285	300	315	330	345														
0	120	120	120	120	120														
5	123	123	121	120	120														
10	133	131	128	124	120														
15	144	140	135	129	123														
20	156	151	144	135	126														
25	167	161	153	141	129														
30	179	171	161	147	133														
35	189	181	169	153	136														
40	198	190	176	157	138														
45	206	196	181	161	139														
50	212	202	185	162	139														
55	219	207	188	163	137														
60	231	214	190	162	134														
65	256	231	196	162	131														
70	300	261	210	165	131														
75	343	292	226	169	130														
80	364	309	236	169	123														
85	363	309	232	161	110														
90	359	304	225	151	98.3														
95	372	315	234	158	105														
100	378	317	234	160	108														
105	361	302	223	154	106														
110	325	272	205	149	106														
115	278	238	189	145	109														
120	241	213	178	142	118														
125	219	198	170	140	124														
130	203	187	162	136	127														
135	189	175	154	140	130														
140	176	162	146	141	130														
145	161	151	147	141	129														
150	151	150	146	138	127														
155	150	148	144	138	126														
160	146	145	140	135	126														
165	140	139	137	133	119														
170	132	132	131	122	106														
175	105	108	103	102	88.6														
180	55.1	58.2	84.6	91.0	93.7														

C Range: 0 - 360DEG  
 C Interval: 15.0DEG  
 Test Speed: HIGH  
 Temperature: 25.0DEG  
 Operators: Alan Wang  
 Test Date: 08 May 2023

γ Range: 0 - 180DEG  
 γ Interval: 1.0DEG  
 Test System: EVERFINE GO-R5000\_V2 SYSTEM V2.00.416  
 Humidity: 43.5%  
 Test Distance: 2.500m [K=1.0390]  
 Remarks: