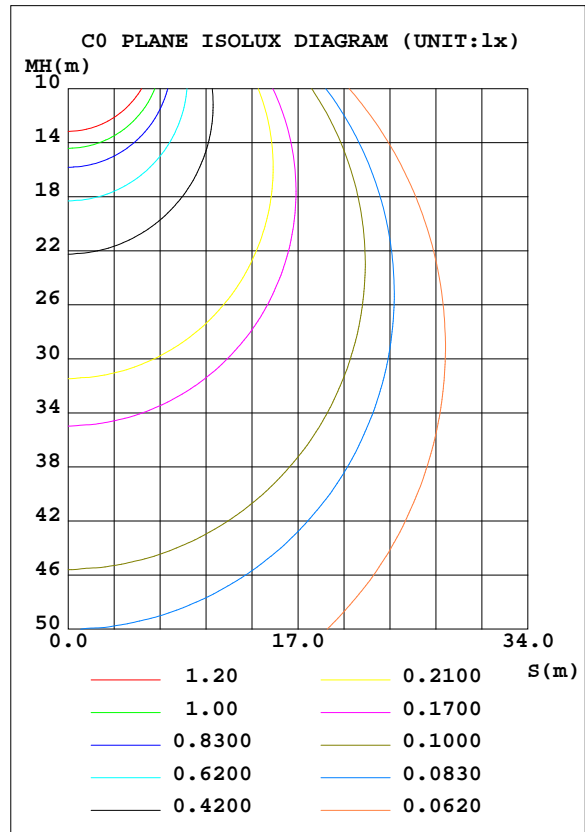
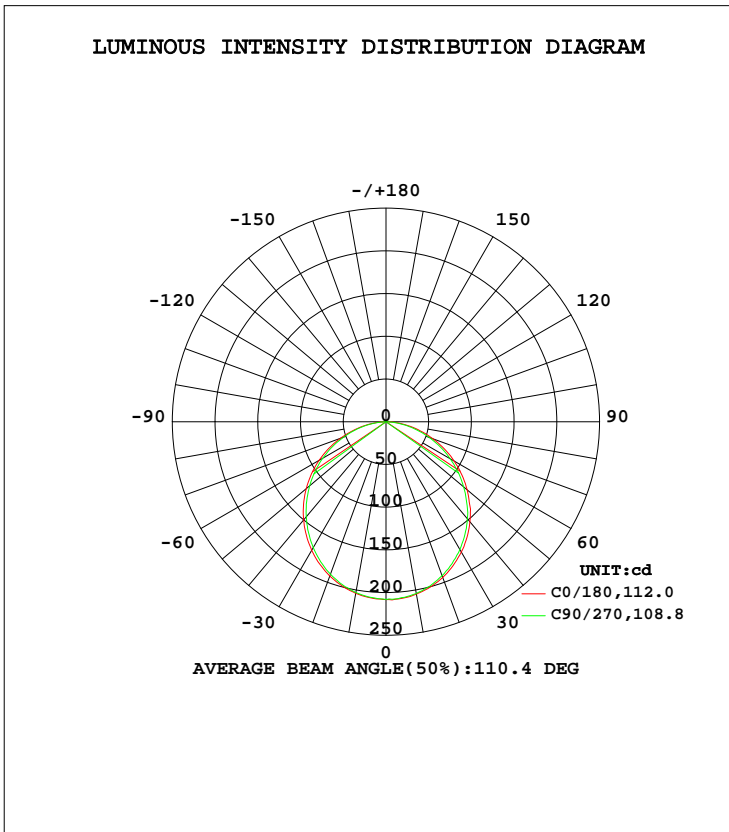


LUMINAIRE PHOTOMETRIC TEST REPORT

Test:U:120.07V I:0.0717A P:8.3200W PF:0.9664 Freq:60.00Hz Lamp Flux:584.463x1 lm		
NAME: ASD-UCS-18D8CC	TYPE: N/A	WEIGHT: N/A
SPEC.: N/A	DIM.: N/A	SERIAL No.: N/A
MFR.: ASD Lighting Corp	SUR.: N/A	Shielding Angle: N/A

DATA OF LAMP		PHOTOMETRIC DATA Eff: 70.25 lm/W			
MODEL	ASD-UCS-18D8CC	I _{max} (cd)	208.8	S/MH(C0/180)	1.26
NOMINAL POWER(W)	8	LOR(%)	100.0	S/MH(C90/270)	1.24
RATED VOLTAGE(V)	120	TOTAL FLUX(lm)	584.46	η UP, DN(C0-180)	0.1,50.0
NOMINAL FLUX(lm)	584.463	CIE CLASS	DIRECT	η UP, DN(C180-360)	0.0,49.9
LAMPS INSIDE	1	η up(%)	0.1	CIBSE SHR NOM	1.25
TEST VOLTAGE(V)	120	η down(%)	99.9	CIBSE SHR MAX	1.35



C Range: 0 - 360DEG
 C Interval: 22.5DEG
 Test Speed: HIGH
 Temperature:24.9DEG
 Operators:Water
 Test Date:2023-09-08

γ Range: 0 - 180DEG
 γ Interval: 1.0DEG
 Test System:EVERFINE GO-R5000_V2 SYSTEM V2.00.446
 Humidity:50%
 Test Distance:2.513m [K=1.0000]
 Remarks: Model No: UCL-31B-18G

ZONAL FLUX DIAGRAM

ZONAL FLUX DIAGRAM:

γ	C0	C45	C90	C135	C180	C225	C270	C315	γ	Φ zone	Φ total	%lum, lamp
10	203.9	203.0	203.1	205.0	204.9	204.4	204.0	203.7	0- 10	19.67	19.67	3.37,3.37
20	192.3	190.7	189.9	193.6	194.0	192.6	191.9	191.2	10- 20	56.11	75.79	13,13
30	173.9	171.4	170.3	175.2	176.3	174.4	172.9	171.9	20- 30	84.51	160.3	27.4,27.4
40	150.0	147.1	145.3	151.1	152.9	150.7	148.3	147.3	30- 40	101.2	261.5	44.7,44.7
50	121.9	118.9	116.8	122.9	123.9	121.4	118.7	117.7	40- 50	104.2	365.7	62.6,62.6
60	90.45	87.73	85.54	91.77	92.19	89.79	86.98	85.89	50- 60	93.73	459.5	78.6,78.6
70	56.68	54.74	52.80	58.69	58.60	56.37	53.85	52.68	60- 70	71.56	531.0	90.9,90.9
80	24.33	23.28	22.21	26.82	26.24	24.23	22.31	20.81	70- 80	41.55	572.6	98,98
90	0.0455	0.0288	0.0272	0.9667	0.1707	0.0074	0.0040	0.0038	80- 90	11.27	583.8	99.9,99.9
100	0.0476	0.0632	0.0498	0.0613	0.0198	0.0154	0.0153	0.0150	90-100	0.0355	583.9	99.9,99.9
110	0.0591	0.0639	0.0604	0.0634	0.0331	0.0298	0.0286	0.0287	100-110	0.0425	583.9	99.9,99.9
120	0.0810	0.0827	0.0837	0.0827	0.0489	0.0467	0.0458	0.0464	110-120	0.0539	584.0	99.9,99.9
130	0.1185	0.1221	0.1279	0.1218	0.0720	0.0697	0.0656	0.0692	120-130	0.0711	584.1	99.9,99.9
140	0.1882	0.2043	0.2072	0.1910	0.0954	0.0958	0.0935	0.0963	130-140	0.0911	584.1	99.9,99.9
150	0.2729	0.2996	0.3110	0.2827	0.1176	0.1265	0.1285	0.1244	140-150	0.1120	584.3	100,100
160	0.3423	0.3511	0.3621	0.3527	0.1625	0.1646	0.1635	0.1574	150-160	0.1085	584.4	100,100
170	0.3204	0.3283	0.3287	0.3286	0.2028	0.1936	0.1907	0.1880	160-170	0.0745	584.4	100,100
180	0.2714	0.2586	0.2491	0.2718	0.2719	0.2669	0.2502	0.2605	170-180	0.0250	584.5	100,100
DEG	LUMINOUS INTENSITY:cd									UNIT:lm		

Conical surface Flux(90deg): 314.17 lm

%lum = 53.8%
 %lamp = 53.8%

Conical surface Flux(120deg): 459.47 lm

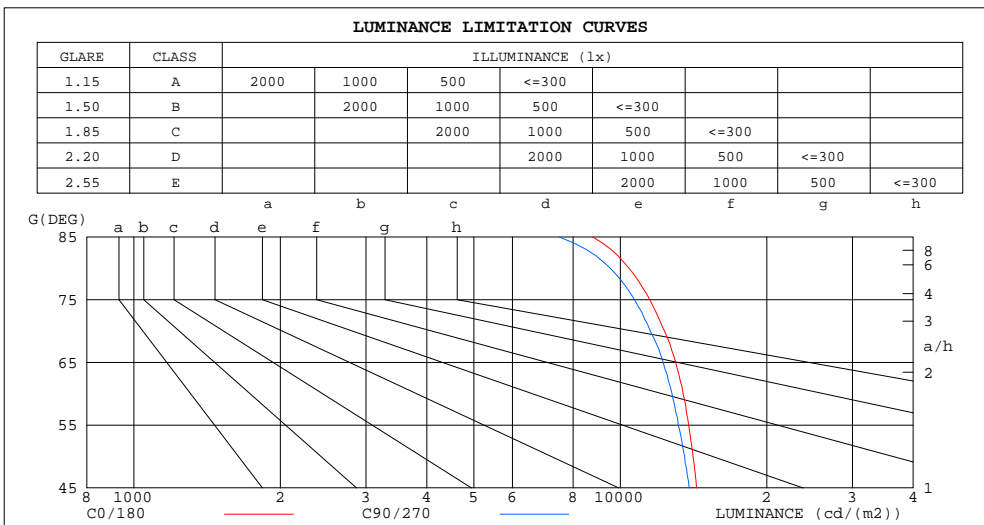
%lum = 78.6%
 %lamp = 78.6%

C Range: 0 - 360DEG
 C Interval: 22.5DEG
 Test Speed: HIGH
 Temperature:24.9DEG
 Operators:Water
 Test Date:2023-09-08

γ Range: 0 - 180DEG
 γ Interval: 1.0DEG
 Test System:EVERFINE GO-R5000_V2 SYSTEM V2.00.446
 Humidity:50%
 Test Distance:2.513m [K=1.0000]
 Remarks: Model No: UCL-31B-18G

LUMINANCE LIMITATION CURVES

Test:U:120.07V I:0.0717A P:8.3200W PF:0.9664 Freq:60.00Hz Lamp Flux:584.463x1 lm		
NAME: ASD-UCS-18D8CC	TYPE: N/A	WEIGHT: N/A
SPEC.: N/A	DIM.: N/A	SERIAL No.: N/A
MFR.: ASD Lighting Corp	SUR.: N/A	Shielding Angle: N/A



LUMINANCE cd/(m2)		
G (DEG)	C0/180	C90/270
85	8778	7489
80	10424	9545
75	11494	10697
70	12327	11524
65	12994	12256
60	13456	12770
55	13822	13154
50	14112	13563
45	14349	13850

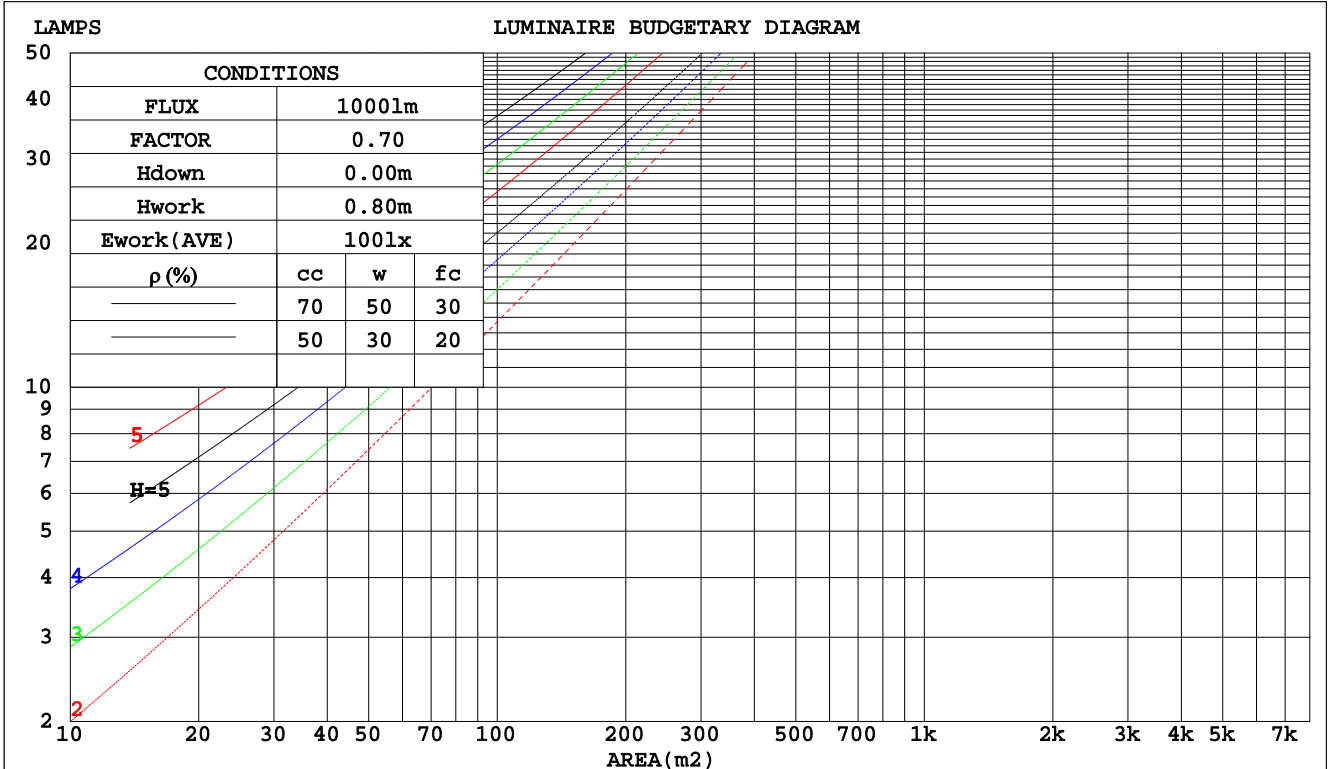
C Range: 0 - 360DEG
 C Interval: 22.5DEG
 Test Speed: HIGH
 Temperature: 24.9DEG
 Operators: Water
 Test Date: 2023-09-08

γ Range: 0 - 180DEG
 γ Interval: 1.0DEG
 Test System: EVERFINE GO-R5000_V2 SYSTEM V2.00.446
 Humidity: 50%
 Test Distance: 2.513m [K=1.0000]
 Remarks: Model No: UCL-31B-18G

CU AND LUMINAIRE BUDGETARY ESTIMATE DIAGRAM

Test:U:120.07V I:0.0717A P:8.3200W PF:0.9664 Freq:60.00Hz Lamp Flux:584.463x1 lm		
NAME: ASD-UCS-18D8CC	TYPE: N/A	WEIGHT: N/A
SPEC.: N/A	DIM.: N/A	SERIAL No.: N/A
MFR.: ASD Lighting Corp	SUR.: N/A	Shielding Angle: N/A

pcc	80%			70%			50%			30%			10%			0
	50%	30%	10%	50%	30%	10%	50%	30%	10%	50%	30%	10%	50%	30%	10%	0
pw																0
pfc	20%			20%			20%			20%			20%			0
RCR	RCR:Room Cavity Ratio Coefficients of Utilization(CU)															
0.0	1.19	1.19	1.19	1.16	1.16	1.16	1.11	1.11	1.11	1.06	1.06	1.06	1.02	1.02	1.02	.00
1.0	1.04	.00	.96	1.02	.98	.94	.97	.94	.91	.93	.91	.88	.90	.88	.86	.83
2.0	.90	.84	.78	.89	.82	.77	.85	.80	.75	.82	.77	.73	.79	.75	.72	.69
3.0	.79	.71	.65	.78	.70	.64	.75	.68	.63	.72	.66	.62	.69	.65	.61	.58
4.0	.70	.61	.55	.69	.61	.54	.66	.59	.54	.64	.58	.53	.62	.56	.52	.50
5.0	.63	.54	.47	.62	.53	.47	.59	.52	.46	.57	.51	.46	.56	.50	.45	.43
6.0	.57	.48	.41	.56	.47	.41	.54	.46	.40	.52	.45	.40	.50	.44	.40	.38
7.0	.51	.42	.36	.50	.42	.36	.49	.41	.36	.47	.41	.36	.46	.40	.35	.33
8.0	.47	.38	.32	.46	.38	.32	.45	.37	.32	.43	.37	.32	.42	.36	.32	.30
9.0	.43	.35	.29	.42	.34	.29	.41	.34	.29	.40	.33	.29	.39	.33	.29	.27
10.0	.40	.32	.26	.39	.31	.26	.38	.31	.26	.37	.31	.26	.36	.30	.26	.24



C Range: 0 - 360DEG
 C Interval: 22.5DEG
 Test Speed: HIGH
 Temperature: 24.9DEG
 Operators: Water
 Test Date: 2023-09-08

γ Range: 0 - 180DEG
 γ Interval: 1.0DEG
 Test System: EVERFINE GO-R5000_V2 SYSTEM V2.00.446
 Humidity: 50%
 Test Distance: 2.513m [K=1.0000]
 Remarks: Model No: UCL-31B-18G

WEC AND CCEC

Test:U:120.07V I:0.0717A P:8.3200W PF:0.9664 Freq:60.00Hz		
Lamp Flux:584.463x1 lm		
NAME: ASD-UCS-18D8CC	TYPE: N/A	WEIGHT: N/A
SPEC.: N/A	DIM.: N/A	SERIAL No.: N/A
MFR.: ASD Lighting Corp	SUR.: N/A	Shielding Angle: N/A

ρcc	80%			70%			50%			30%			10%			0
ρw	50%	30%	10%	50%	30%	10%	50%	30%	10%	50%	30%	10%	50%	30%	10%	0
ρfc	20%			20%			20%			20%			20%			0
RCR	RCR:Room Cavity Ratio						Wall Exitance Coefficients(WEC)									
0.0																
1.0	.310	.176	.056	.303	.173	.055	.290	.166	.053	.278	.160	.051	.266	.154	.050	
2.0	.292	.160	.049	.286	.157	.048	.274	.152	.047	.263	.148	.046	.253	.143	.045	
3.0	.270	.144	.043	.264	.142	.043	.254	.138	.042	.244	.134	.041	.235	.130	.040	
4.0	.249	.129	.038	.244	.128	.038	.235	.125	.037	.226	.122	.037	.218	.119	.036	
5.0	.230	.117	.034	.226	.116	.034	.218	.113	.033	.210	.111	.033	.203	.108	.033	
6.0	.213	.107	.031	.210	.106	.030	.202	.104	.030	.195	.102	.030	.189	.100	.030	
7.0	.199	.098	.028	.195	.097	.028	.189	.095	.027	.183	.094	.027	.177	.092	.027	
8.0	.185	.091	.025	.182	.090	.025	.177	.088	.025	.171	.087	.025	.166	.085	.025	
9.0	.174	.084	.023	.171	.083	.023	.166	.082	.023	.161	.081	.023	.156	.079	.023	
10.0	.163	.078	.022	.161	.078	.022	.156	.077	.022	.152	.075	.021	.148	.074	.021	

ρcc	80%			70%			50%			30%			10%			0
ρw	50%	30%	10%	50%	30%	10%	50%	30%	10%	50%	30%	10%	50%	30%	10%	0
ρfc	20%			20%			20%			20%			20%			0
RCR	RCR:Room Cavity Ratio						Ceiling Cavity Exitance Coefficients(CCEC)									
0.0	.191	.191	.191	.163	.163	.163	.112	.112	.112	.064	.064	.064	.020	.020	.020	
1.0	.181	.157	.135	.155	.135	.116	.106	.093	.080	.061	.054	.047	.020	.017	.015	
2.0	.173	.133	.099	.148	.114	.085	.102	.079	.060	.059	.046	.035	.019	.015	.011	
3.0	.165	.115	.075	.142	.099	.065	.097	.069	.046	.056	.040	.027	.018	.013	.009	
4.0	.158	.102	.059	.135	.088	.051	.093	.061	.036	.054	.036	.021	.017	.012	.007	
5.0	.150	.091	.048	.129	.079	.042	.089	.055	.029	.051	.032	.017	.017	.011	.006	
6.0	.143	.083	.040	.123	.072	.035	.085	.050	.025	.049	.030	.015	.016	.010	.005	
7.0	.136	.076	.034	.117	.066	.030	.081	.046	.021	.047	.027	.013	.015	.009	.004	
8.0	.130	.070	.030	.112	.061	.026	.077	.043	.018	.045	.025	.011	.015	.008	.004	
9.0	.124	.065	.026	.106	.057	.023	.074	.040	.016	.043	.024	.010	.014	.008	.003	
10.0	.118	.061	.023	.102	.053	.020	.071	.037	.014	.041	.022	.009	.013	.007	.003	

C Range: 0 - 360DEG
 C Interval: 22.5DEG
 Test Speed: HIGH
 Temperature:24.9DEG
 Operators:Water
 Test Date:2023-09-08

γ Range: 0 - 180DEG
 γ Interval: 1.0DEG
 Test System:EVERFINE GO-R5000_V2 SYSTEM V2.00.446
 Humidity:50%
 Test Distance:2.513m [K=1.0000]
 Remarks: Model No: UCL-31B-18G

UGR(Unified Glare Rating) Table

Test:U:120.07V I:0.0717A P:8.3200W PF:0.9664 Freq:60.00Hz										
Lamp Flux:584.463x1 lm										
NAME: ASD-UCS-18D8CC					TYPE: N/A			WEIGHT: N/A		
SPEC.: N/A					DIM.: N/A			SERIAL No.: N/A		
MFR.: ASD Lighting Corp					SUR.: N/A			Shielding Angle: N/A		
ceiling/cavity	0.7	0.7	0.5	0.5	0.3	0.7	0.7	0.5	0.5	0.3
walls	0.5	0.3	0.5	0.3	0.3	0.5	0.3	0.5	0.3	0.3
working plane	0.2	0.2	0.2	0.2	0.2	0.2	0.2	0.2	0.2	0.2
Room dimensions	Viewed crosswise					Viewed endwise				
x = 2H y = 2H	23.8	25.4	24.1	25.6	25.8	23.6	25.1	23.9	25.3	25.5
3H	25.4	26.8	25.7	27.0	27.3	25.1	26.5	25.4	26.7	27.0
4H	26.0	27.3	26.3	27.6	27.8	25.7	27.0	26.0	27.3	27.5
6H	26.4	27.7	26.8	28.0	28.3	26.1	27.4	26.4	27.6	27.9
8H	26.6	27.8	26.9	28.1	28.4	26.2	27.4	26.6	27.7	28.0
12H	26.7	27.8	27.0	28.1	28.4	26.3	27.5	26.6	27.8	28.1
4H 2H	24.4	25.8	24.7	26.0	26.3	24.2	25.6	24.6	25.8	26.1
3H	26.1	27.3	26.5	27.6	27.9	25.9	27.1	26.3	27.4	27.7
4H	26.9	28.0	27.3	28.3	28.6	26.6	27.7	27.0	28.0	28.3
6H	27.5	28.4	27.9	28.8	29.1	27.2	28.1	27.6	28.5	28.8
8H	27.7	28.6	28.1	28.9	29.3	27.3	28.2	27.8	28.6	29.0
12H	27.8	28.6	28.2	29.0	29.4	27.4	28.3	27.9	28.6	29.1
8H 4H	27.1	28.0	27.6	28.4	28.8	26.9	27.8	27.3	28.2	28.6
6H	27.9	28.6	28.3	29.0	29.5	27.6	28.3	28.0	28.7	29.2
8H	28.2	28.8	28.6	29.2	29.7	27.9	28.5	28.3	28.9	29.4
12H	28.4	28.9	28.9	29.4	29.9	28.0	28.6	28.5	29.0	29.5
12H 4H	27.2	28.0	27.6	28.4	28.8	26.9	27.7	27.4	28.1	28.5
6H	27.9	28.6	28.4	29.0	29.5	27.7	28.3	28.1	28.7	29.2
8H	28.3	28.8	28.7	29.3	29.7	28.0	28.5	28.4	29.0	29.5
Variations with the observer position at spacings(CIE Pub.117):										
S = 1.0H	+ 0.1 / - 0.2					+ 0.2 / - 0.2				
1.5H	+ 0.2 / - 0.3					+ 0.2 / - 0.3				
2.0H	+ 0.2 / - 0.3					+ 0.2 / - 0.3				

CIE Pub.117, 584.5 lm Total Lamp Luminous Flux Correct (8log(F/F0) = -1.9)
 Area: 0.013423 m2

C Range: 0 - 360DEG
 C Interval: 22.5DEG
 Test Speed: HIGH
 Temperature:24.9DEG
 Operators:Water
 Test Date:2023-09-08

γ Range: 0 - 180DEG
 γ Interval: 1.0DEG
 Test System:EVERFINE GO-R5000_V2 SYSTEM V2.00.446
 Humidity:50%
 Test Distance:2.513m [K=1.0000]
 Remarks: Model No: UCL-31B-18G

UTILIZATION FACTORS TABLE

Test:U:120.07V I:0.0717A P:8.3200W PF:0.9664 Freq:60.00Hz Lamp Flux:584.463x1 lm		
NAME: ASD-UCS-18D8CC	TYPE: N/A	WEIGHT: N/A
SPEC.: N/A	DIM.: N/A	SERIAL No.: N/A
MFR.: ASD Lighting Corp	SUR.: N/A	Shielding Angle: N/A

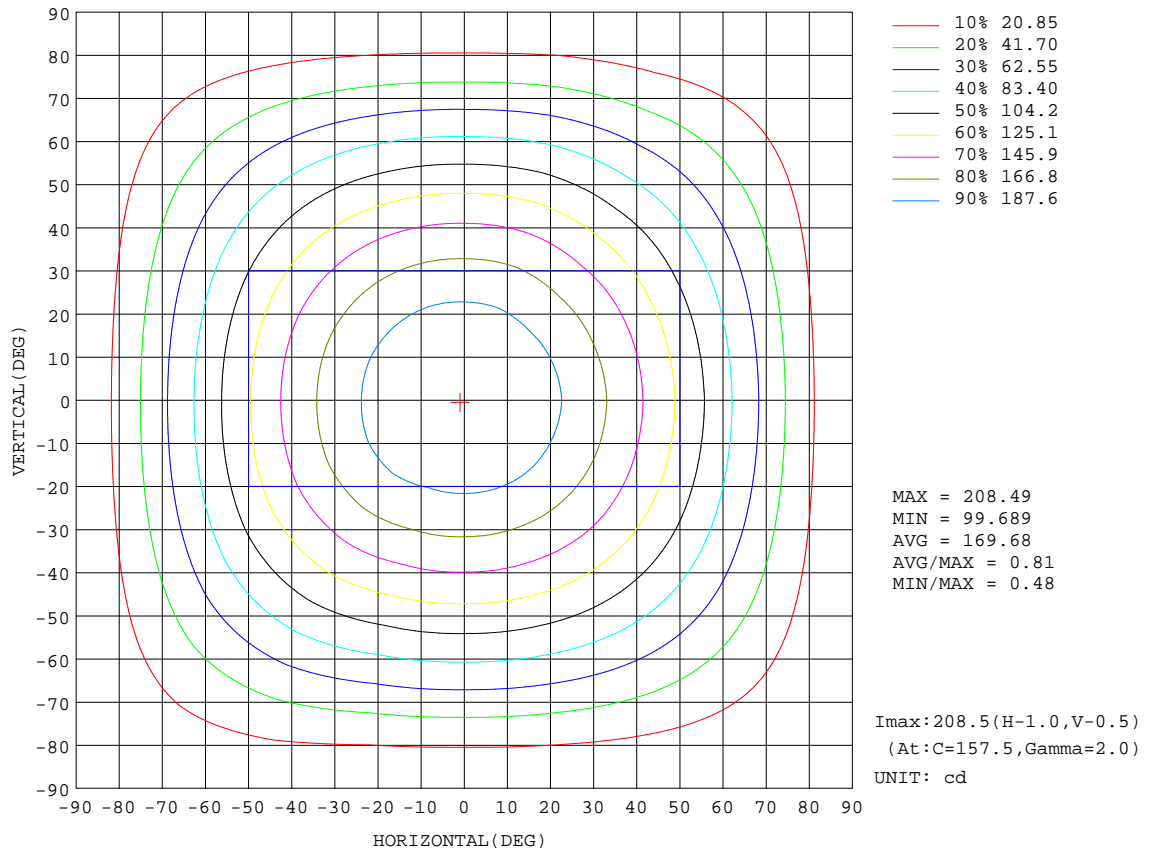
REFLECTANCE										
Ceiling	0.8	0.8	0.8	0.7	0.7	0.7	0.5	0.5	0.5	0
Walls	0.7	0.5	0.3	0.7	0.5	0.3	0.7	0.5	0.3	0
Working plane	0.2	0.2	0.2	0.2	0.2	0.2	0.2	0.2	0.2	0
ROOM INDEX	UTILIZATION FACTORS(PERCENT) $k(RI) \times RCR = 5$									
k = 0.60	58	46	39	57	46	39	56	45	39	32
0.80	68	56	49	67	56	48	65	55	48	41
1.00	76	65	58	75	64	57	73	66	57	50
1.25	83	73	65	82	72	65	79	70	64	57
1.50	88	78	71	86	77	71	83	75	70	62
2.00	95	86	80	93	85	79	90	83	78	70
2.50	99	91	85	97	90	84	93	87	82	74
3.00	102	95	90	100	94	89	96	91	87	78
4.00	106	100	96	104	99	94	100	95	92	83
5.00	109	104	100	106	102	98	102	98	95	86
ROOM INDEX	UF(total)									Direct
According to DIN EN 13032-2 2004			Suspended				SHRNOM = 1.25			

C Range: 0 - 360DEG
 C Interval: 22.5DEG
 Test Speed: HIGH
 Temperature:24.9DEG
 Operators:Water
 Test Date:2023-09-08

γ Range: 0 - 180DEG
 γ Interval: 1.0DEG
 Test System:EVERFINE GO-R5000_V2 SYSTEM V2.00.446
 Humidity:50%
 Test Distance:2.513m [K=1.0000]
 Remarks: Model No: UCL-31B-18G

ISOCANDELA DIAGRAM

Test:U:120.07V I:0.0717A P:8.3200W PF:0.9664 Freq:60.00Hz Lamp Flux:584.463x1 lm		
NAME: ASD-UCS-18D8CC	TYPE: N/A	WEIGHT: N/A
SPEC.: N/A	DIM.: N/A	SERIAL No.: N/A
MFR.: ASD Lighting Corp	SUR.: N/A	Shielding Angle: N/A



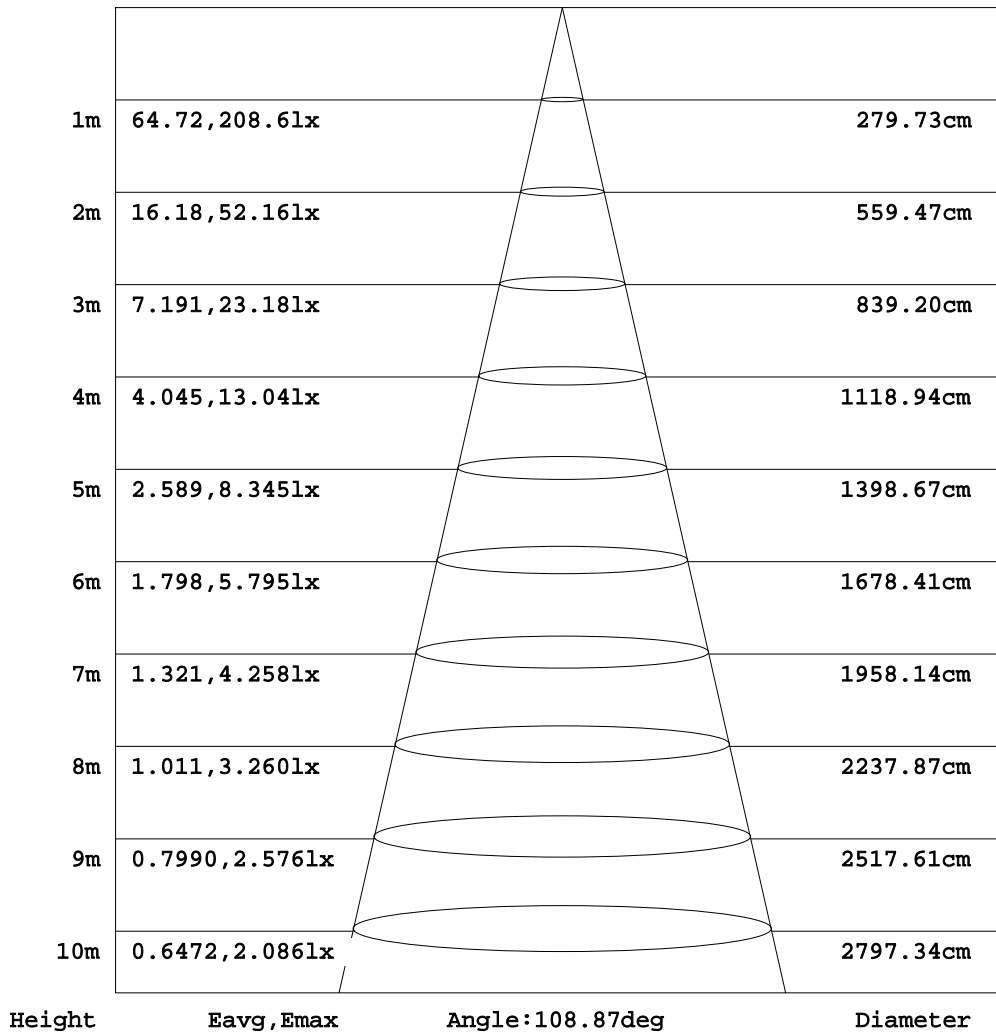
C Range: 0 - 360DEG
 C Interval: 22.5DEG
 Test Speed: HIGH
 Temperature: 24.9DEG
 Operators: Water
 Test Date: 2023-09-08

γ Range: 0 - 180DEG
 γ Interval: 1.0DEG
 Test System: EVERFINE GO-R5000_V2 SYSTEM V2.00.446
 Humidity: 50%
 Test Distance: 2.513m [K=1.0000]
 Remarks: Model No: UCL-31B-18G

AAI Figure

Test:U:120.07V I:0.0717A P:8.3200W PF:0.9664 Freq:60.00Hz Lamp Flux:584.463x1 lm		
NAME: ASD-UCS-18D8CC	TYPE: N/A	WEIGHT: N/A
SPEC.: N/A	DIM.: N/A	SERIAL No.: N/A
MFR.: ASD Lighting Corp	SUR.: N/A	Shielding Angle: N/A

Flux out:414.7 lm



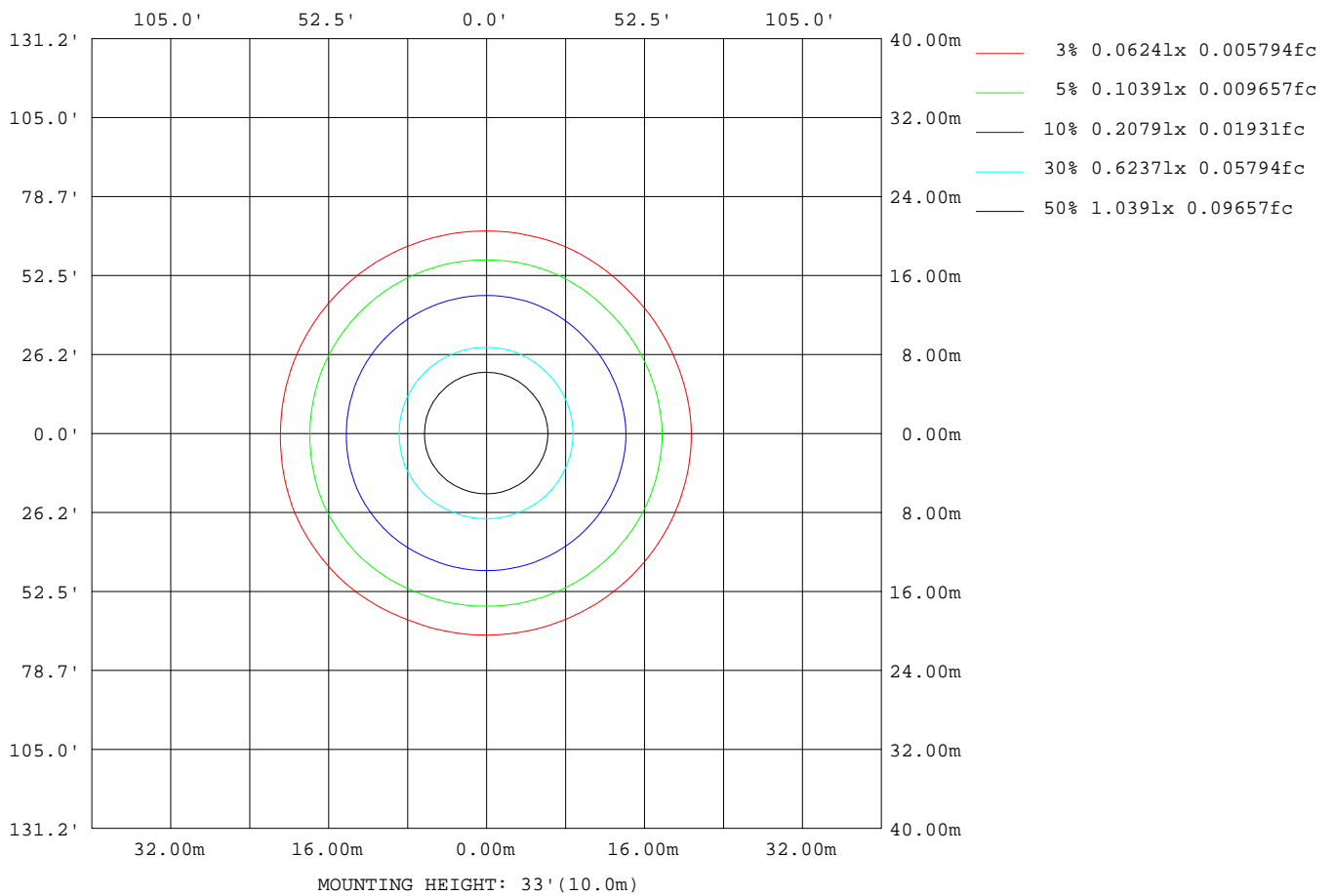
Note: The Curves indicate the illuminated area and the average illumination when the luminaire is at different distance.

C Range: 0 - 360DEG
 C Interval: 22.5DEG
 Test Speed: HIGH
 Temperature: 24.9DEG
 Operators: Water
 Test Date: 2023-09-08

γ Range: 0 - 180DEG
 γ Interval: 1.0DEG
 Test System: EVERFINE GO-R5000_V2 SYSTEM V2.00.446
 Humidity: 50%
 Test Distance: 2.513m [K=1.0000]
 Remarks: Model No: UCL-31B-18G

ISOLUX DIAGRAM

Test:U:120.07V I:0.0717A P:8.3200W PF:0.9664 Freq:60.00Hz Lamp Flux:584.463x1 lm		
NAME: ASD-UCS-18D8CC	TYPE: N/A	WEIGHT: N/A
SPEC.: N/A	DIM.: N/A	SERIAL No.: N/A
MFR.: ASD Lighting Corp	SUR.: N/A	Shielding Angle: N/A



C Range: 0 - 360DEG
 C Interval: 22.5DEG
 Test Speed: HIGH
 Temperature:24.9DEG
 Operators:Water
 Test Date:2023-09-08

γ Range: 0 - 180DEG
 γ Interval: 1.0DEG
 Test System:EVERFINE GO-R5000_V2 SYSTEM V2.00.446
 Humidity:50%
 Test Distance:2.513m [K=1.0000]
 Remarks: Model No: UCL-31B-18G

LED Avg.L Report

Test:U:120.07V I:0.0717A P:8.3200W PF:0.9664 Freq:60.00Hz Lamp Flux:584.463x1 lm		
NAME: ASD-UCS-18D8CC	TYPE: N/A	WEIGHT: N/A
SPEC.: N/A	DIM.: N/A	SERIAL No.: N/A
MFR.: ASD Lighting Corp	SUR.: N/A	Shielding Angle: N/A

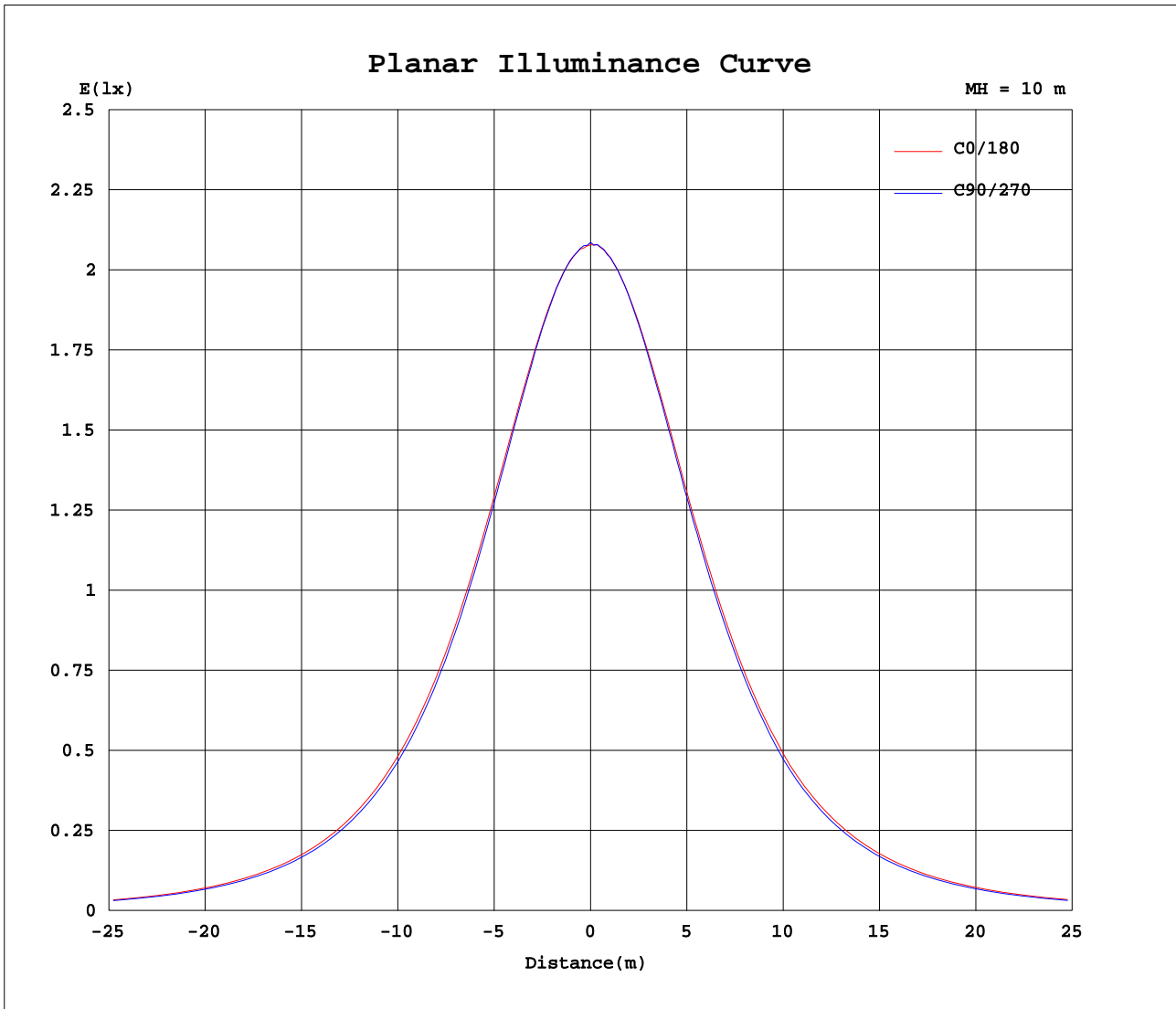
AvgL	cd/m2
L_0~180(65)av	13161
L_0~180(75)av	11797
L_0~180(85)av	9516
L_90~270(65)av	12333
L_90~270(75)av	10758
L_90~270(85)av	7247
L_45(65)av	12761
L_45(75)av	11303
L_45(85)av	8185

Standard: GB/T 29293-2012

C Range: 0 - 360DEG
 C Interval: 22.5DEG
 Test Speed: HIGH
 Temperature:24.9DEG
 Operators:Water
 Test Date:2023-09-08

γ Range: 0 - 180DEG
 γ Interval: 1.0DEG
 Test System:EVERFINE GO-R5000_V2 SYSTEM V2.00.446
 Humidity:50%
 Test Distance:2.513m [K=1.0000]
 Remarks: Model No: UCL-31B-18G

Planar Illuminance Curve



C Range: 0 - 360DEG
 C Interval: 22.5DEG
 Test Speed: HIGH
 Temperature: 24.9DEG
 Operators: Water
 Test Date: 2023-09-08

γ Range: 0 - 180DEG
 γ Interval: 1.0DEG
 Test System: EVERFINE GO-R5000_V2 SYSTEM V2.00.446
 Humidity: 50%
 Test Distance: 2.513m [K=1.0000]
 Remarks: Model No: UCL-31B-18G

LUMINOUS DISTRIBUTION INTENSITY DATA

Test:U:120.07V I:0.0717A P:8.3200W PF:0.9664 Freq:60.00Hz Lamp Flux:584.463x1 lm		
NAME: ASD-UCS-18D8CC	TYPE: N/A	WEIGHT: N/A
SPEC.: N/A	DIM.: N/A	SERIAL No.: N/A
MFR.: ASD Lighting Corp	SUR.: N/A	Shielding Angle: N/A

Table--1

UNIT: cd

C(DEG) \ γ (DEG)	0	22.5	45	67.5	90	112.5	135	157.5	180	202.5	225	247.5	270	292.5	315	337.5			
0	208	208	208	208	208	208	208	208	208	208	208	208	208	208	208	208			
5	207	207	206	207	206	207	208	208	208	208	207	207	207	207	207	207			
10	204	204	203	203	203	204	205	205	205	205	204	204	204	204	204	204			
15	199	199	198	198	197	198	200	201	200	200	199	199	199	199	198	198			
20	192	192	191	190	190	191	194	194	194	194	193	192	192	192	191	191			
25	184	183	182	181	181	182	185	186	186	186	185	184	183	184	182	182			
30	174	173	171	171	170	171	175	176	176	176	174	174	173	173	172	172			
35	162	162	160	159	158	159	164	166	165	165	164	162	161	161	160	161			
40	150	149	147	146	145	147	151	153	153	153	151	149	148	149	147	149			
45	136	136	133	132	131	132	138	140	139	138	136	135	134	134	132	134			
50	122	121	119	117	117	118	123	125	124	124	121	120	119	119	118	119			
55	107	106	103	102	101	102	108	110	108	108	106	104	103	104	102	103			
60	90.5	89.8	87.7	86.1	85.5	86.7	91.8	94.0	92.2	91.7	89.8	88.2	87.0	87.5	85.9	87.4			
65	73.8	73.3	71.6	70.1	69.4	70.4	75.5	77.2	75.5	74.9	73.2	71.6	70.5	71.0	69.3	70.8			
70	56.7	56.2	54.7	53.4	52.8	53.7	58.7	60.3	58.6	58.0	56.4	54.8	53.8	54.4	52.7	54.0			
75	40.0	39.6	38.7	37.6	37.1	37.9	42.2	43.5	42.0	41.4	39.9	38.5	37.7	38.2	36.2	37.5			
80	24.3	24.1	23.3	22.7	22.2	22.8	26.8	27.8	26.2	25.6	24.2	23.0	22.3	22.9	20.8	22.0			
85	10.3	10.1	9.50	8.97	8.74	9.06	12.5	13.3	12.0	11.3	9.66	8.65	8.21	8.40	6.68	8.13			
90	0.05	0.03	0.03	0.03	0.03	0.03	0.03	0.03	0.03	0.03	0.01	0.00	0.00	0.00	0.00	0.00			
95	0.04	0.05	0.07	0.03	0.03	0.03	0.03	0.03	0.01	0.01	0.01	0.01	0.01	0.01	0.01	0.01			
100	0.05	0.06	0.06	0.06	0.05	0.06	0.06	0.06	0.02	0.01	0.02	0.02	0.02	0.02	0.01	0.02			
105	0.05	0.06	0.06	0.06	0.05	0.06	0.06	0.06	0.03	0.02	0.02	0.02	0.02	0.02	0.02	0.02			
110	0.06	0.06	0.06	0.06	0.06	0.06	0.06	0.06	0.03	0.03	0.03	0.03	0.03	0.03	0.03	0.03			
115	0.07	0.07	0.07	0.07	0.07	0.07	0.07	0.07	0.04	0.04	0.04	0.04	0.04	0.04	0.04	0.04			
120	0.08	0.08	0.08	0.08	0.08	0.09	0.08	0.08	0.05	0.05	0.05	0.05	0.05	0.05	0.04	0.05			
125	0.10	0.10	0.10	0.10	0.10	0.10	0.10	0.10	0.06	0.06	0.06	0.06	0.06	0.06	0.05	0.06			
130	0.12	0.13	0.12	0.13	0.13	0.13	0.12	0.12	0.07	0.07	0.07	0.07	0.07	0.07	0.07	0.07			
135	0.15	0.15	0.15	0.15	0.16	0.16	0.15	0.14	0.08	0.08	0.08	0.08	0.08	0.08	0.08	0.08			
140	0.19	0.20	0.20	0.20	0.21	0.21	0.19	0.18	0.10	0.09	0.10	0.09	0.09	0.09	0.10	0.10			
145	0.23	0.24	0.26	0.26	0.27	0.26	0.24	0.22	0.11	0.11	0.11	0.11	0.11	0.11	0.11	0.12			
150	0.27	0.29	0.30	0.31	0.31	0.31	0.28	0.27	0.12	0.12	0.13	0.13	0.13	0.13	0.12	0.13			
155	0.31	0.33	0.34	0.34	0.35	0.34	0.32	0.31	0.14	0.13	0.15	0.14	0.14	0.14	0.14	0.16			
160	0.34	0.35	0.35	0.37	0.36	0.36	0.35	0.34	0.16	0.16	0.16	0.16	0.16	0.16	0.16	0.17			
165	0.34	0.35	0.35	0.36	0.36	0.36	0.35	0.34	0.18	0.18	0.18	0.18	0.18	0.18	0.17	0.19			
170	0.32	0.32	0.33	0.33	0.33	0.33	0.33	0.32	0.20	0.20	0.19	0.19	0.19	0.19	0.19	0.20			
175	0.30	0.31	0.31	0.30	0.29	0.30	0.31	0.31	0.24	0.24	0.23	0.22	0.21	0.21	0.22	0.23			
180	0.27	0.27	0.26	0.25	0.25	0.25	0.27	0.28	0.27	0.27	0.27	0.26	0.25	0.25	0.26	0.27			

C Range: 0 - 360DEG
 C Interval: 22.5DEG
 Test Speed: HIGH
 Temperature:24.9DEG
 Operators:Water
 Test Date:2023-09-08

γ Range: 0 - 180DEG
 γ Interval: 1.0DEG
 Test System:EVERFINE GO-R5000_V2 SYSTEM V2.00.446
 Humidity:50%
 Test Distance:2.513m [K=1.0000]
 Remarks: Model No: UCL-31B-18G