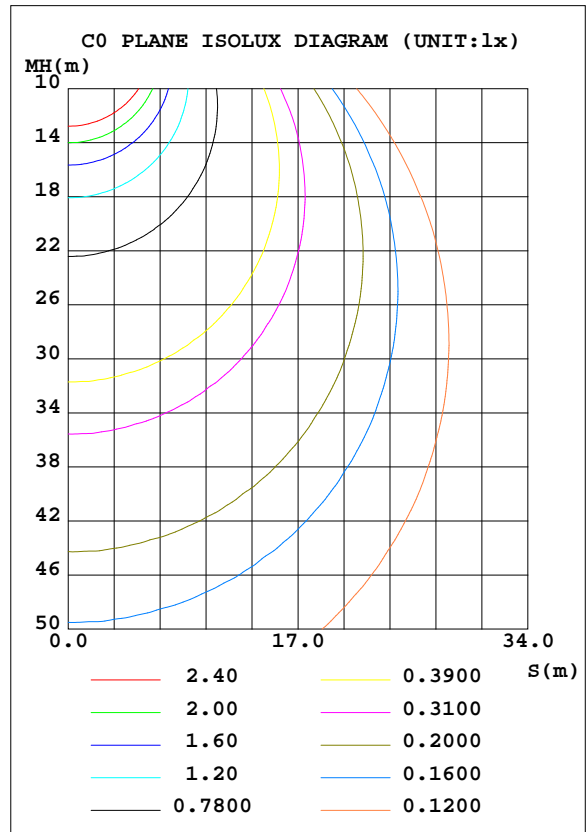
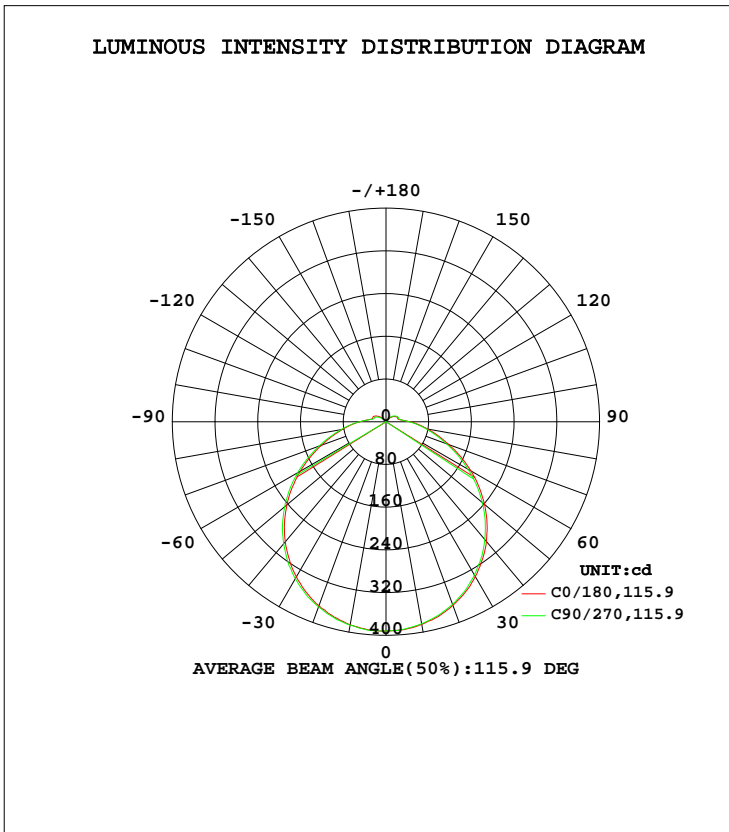


LUMINAIRE PHOTOMETRIC TEST REPORT

Test:U:120.1V I:0.1242A P:14.68W PF:0.9844 Lamp Flux:1345.93x1 lm		
NAME: ASD-LFMDR-MV-12N15CC-MS-NK 5000K	TYPE:N/A	WEIGHT:N/A
SPEC.:N/A	DIM.: N/A	SERIAL No.:N/A
MFR.: ASD Lighting corp	SUR.:N/A	Shielding Angle:N/A

DATA OF LAMP		PHOTOMETRIC DATA Eff: 91.68 lm/W			
MODEL	PSZ2S220516003-10	I _{max} (cd)	393.0	S/MH(C0/180)	1.27
NOMINAL POWER(W)		LOR(%)	100.0	S/MH(C90/270)	1.26
RATED VOLTAGE(V)	120	TOTAL FLUX(lm)	1345.9	η UP, DN(C0-180)	4.2,46.6
NOMINAL FLUX(lm)	1345.93	CIE CLASS	DIRECT	η UP, DN(C180-360)	4.3,44.9
LAMPS INSIDE	1	η up(%)	8.5	CIBSE SHR NOM	1.25
TEST VOLTAGE(V)	120	η down(%)	91.5	CIBSE SHR MAX	1.35



C Range: 0 - 360DEG
 C Interval: 22.5DEG
 Test Speed: HIGH
 Temperature:24.2DEG
 Operators:Carl
 Test Date:2022-05-19

γ Range: 0 - 180DEG
 γ Interval: 1.0DEG
 Test System:EVERFINE GO-R5000_V2 SYSTEM V2.0.351
 Humidity:50%
 Test Distance:2.526m [K=1.0000]
 Remarks:

ZONAL FLUX DIAGRAM

ZONAL FLUX DIAGRAM:

γ	C0	C45	C90	C135	C180	C225	C270	C315	γ	Φ zone	Φ total	%lum, lamp
10	386.1	386.6	386.8	386.5	385.2	384.3	384.0	384.4	0- 10	37.09	37.09	2.76,2.76
20	366.8	367.6	369.1	368.8	365.8	364.4	364.0	363.6	10- 20	106.5	143.6	10.7,10.7
30	335.5	337.2	339.4	339.4	334.5	332.3	331.2	331.1	20- 30	162.3	305.9	22.7,22.7
40	293.6	295.8	298.1	297.4	292.4	289.5	287.9	287.9	30- 40	197.2	503.1	37.4,37.4
50	242.4	245.4	247.8	247.4	241.1	237.5	235.6	235.5	40- 50	206.8	710.0	52.7,52.7
60	185.3	188.8	191.0	190.2	183.4	179.7	177.4	177.8	50- 60	190.7	900.7	66.9,66.9
70	128.8	131.9	133.6	132.5	125.3	122.3	120.5	120.9	60- 70	153.6	1054	78.3,78.3
80	82.79	85.10	85.45	84.49	79.23	77.43	75.83	76.34	70- 80	108.6	1163	86.4,86.4
90	49.12	50.45	49.90	49.03	45.40	44.84	43.47	43.78	80- 90	68.78	1232	91.5,91.5
100	28.55	28.73	27.46	26.71	25.04	26.13	25.95	26.24	90-100	38.67	1270	94.4,94.4
110	25.99	25.23	23.13	22.29	22.99	23.87	24.55	25.23	100-110	26.17	1296	96.3,96.3
120	21.75	19.37	17.97	18.80	19.64	20.87	21.51	21.49	110-120	22.44	1319	98,98
130	14.09	10.50	9.269	11.27	14.21	15.75	16.45	15.76	120-130	15.24	1334	99.1,99.1
140	5.853	3.569	2.888	4.282	7.037	9.162	9.828	8.276	130-140	7.639	1342	99.7,99.7
150	2.687	1.698	1.461	3.437	2.687	3.690	3.779	2.731	140-150	2.677	1344	99.9,99.9
160	1.997	1.954	1.398	1.636	1.474	0.9804	1.596	1.444	150-160	0.9543	1345	100,100
170	1.502	1.819	1.455	1.508	1.186	0.8800	1.538	1.647	160-170	0.4468	1346	100,100
180	0.6050	0.1681	0.6187	0.6331	0.6449	0.6420	0.6412	0.6429	170-180	0.1191	1346	100,100
DEG	LUMINOUS INTENSITY:cd									UNIT:lm		

Conical surface Flux(90deg): 606.99 lm

%lum = 45.1%
%lamp = 45.1%

Conical surface Flux(120deg): 900.66 lm

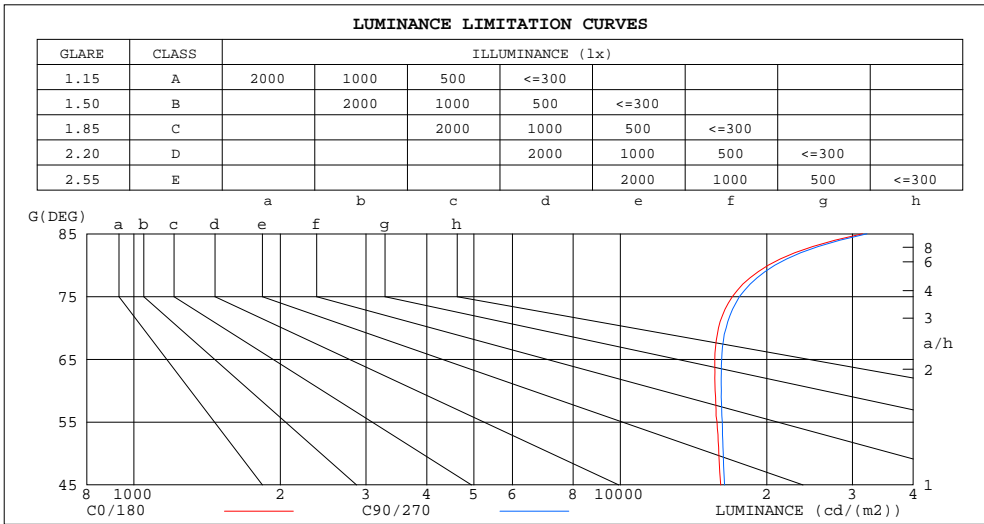
%lum = 66.9%
%lamp = 66.9%

C Range: 0 - 360DEG
C Interval: 22.5DEG
Test Speed: HIGH
Temperature:24.2DEG
Operators:Carl
Test Date:2022-05-19

γ Range: 0 - 180DEG
γ Interval: 1.0DEG
Test System:EVERFINE GO-R5000_V2 SYSTEM V2.0.351
Humidity:50%
Test Distance:2.526m [K=1.0000]
Remarks:

LUMINANCE LIMITATION CURVES

Test:U:120.1V I:0.1242A P:14.68W PF:0.9844 Lamp Flux:1345.93x1 lm		
NAME: ASD-LFMDR-MV-12N15CC-MS-NK 5000K	TYPE:N/A	WEIGHT:N/A
SPEC.:N/A	DIM.: N/A	SERIAL No.:N/A
MFR.: ASD Lighting corp	SUR.:N/A	Shielding Angle:N/A



LUMINANCE cd/(m2)		
G (DEG)	C0/180	C90/270
85	31440	32113
80	20149	20783
75	16992	17578
70	15917	16499
65	15633	16157
60	15666	16135
55	15811	16204
50	15939	16283
45	16077	16378

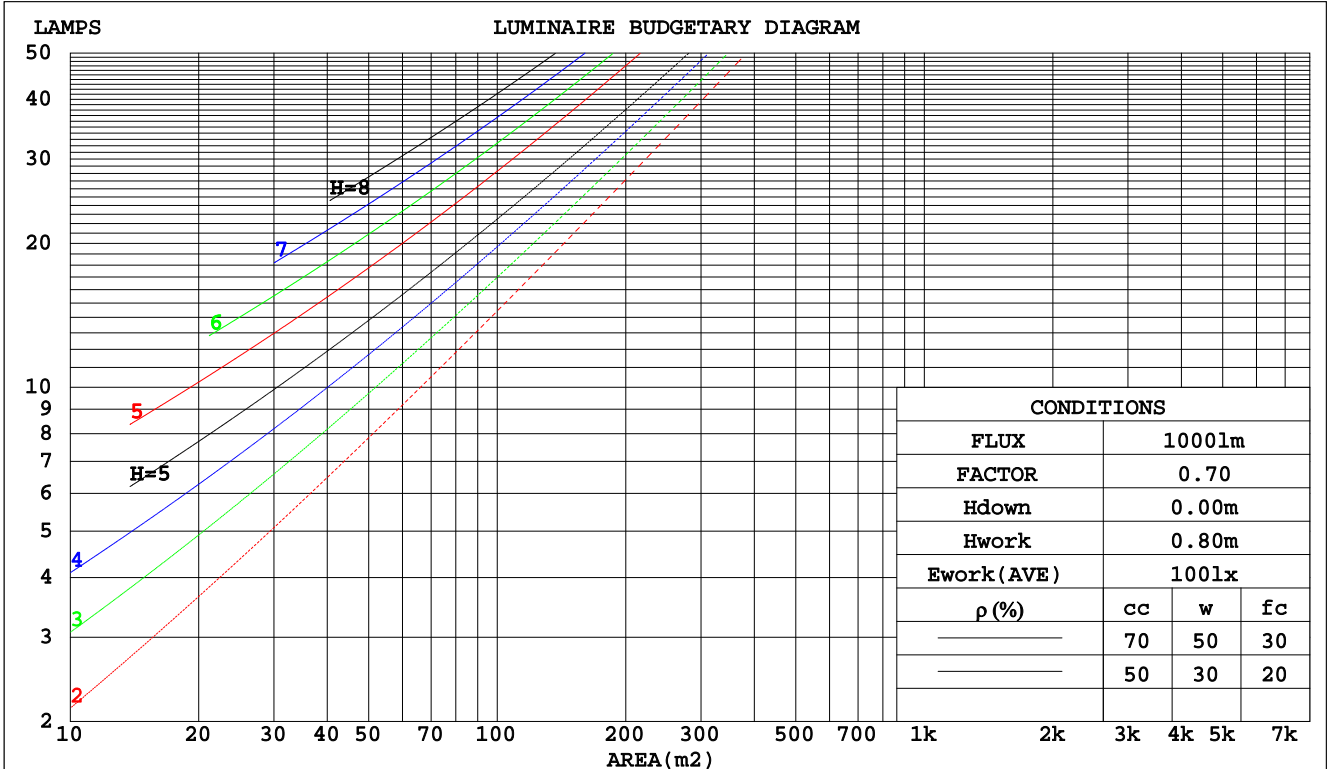
C Range: 0 - 360DEG
 C Interval: 22.5DEG
 Test Speed: HIGH
 Temperature: 24.2DEG
 Operators: Carl
 Test Date: 2022-05-19

γ Range: 0 - 180DEG
 γ Interval: 1.0DEG
 Test System: EVERFINE GO-R5000_V2 SYSTEM V2.0.351
 Humidity: 50%
 Test Distance: 2.526m [K=1.0000]
 Remarks:

CU AND LUMINAIRE BUDGETARY ESTIMATE DIAGRAM

Test:U:120.1V I:0.1242A P:14.68W PF:0.9844 Lamp Flux:1345.93x1 lm		
NAME: ASD-LFMDR-MV-12N15CC-MS-NK 5000K	TYPE:N/A	WEIGHT:N/A
SPEC.:N/A	DIM.: N/A	SERIAL No.:N/A
MFR.: ASD Lighting corp	SUR.:N/A	Shielding Angle:N/A

pcc	80%			70%			50%			30%			10%			0
	50%	30%	10%	50%	30%	10%	50%	30%	10%	50%	30%	10%	50%	30%	10%	0
pw																0
pfc	20%			20%			20%			20%			20%			0
RCR	RCR:Room Cavity Ratio Coefficients of Utilization(CU)															
0.0	1.17	1.17	1.17	1.13	1.13	1.13	1.06	1.06	1.06	1.00	1.00	1.00	.94	.94	.94	.92
1.0	.00	.95	.91	.97	.92	.88	.91	.87	.84	.85	.82	.80	.80	.78	.76	.73
2.0	.86	.79	.73	.84	.77	.71	.79	.73	.68	.74	.69	.65	.70	.66	.63	.60
3.0	.75	.67	.60	.73	.65	.59	.69	.62	.57	.65	.59	.55	.61	.57	.53	.50
4.0	.67	.57	.50	.65	.56	.50	.61	.54	.48	.58	.51	.46	.54	.49	.45	.42
5.0	.59	.50	.43	.58	.49	.43	.55	.47	.41	.52	.45	.40	.49	.43	.39	.36
6.0	.53	.44	.38	.52	.43	.37	.49	.42	.36	.47	.40	.35	.44	.39	.34	.32
7.0	.48	.39	.33	.47	.39	.33	.45	.37	.32	.42	.36	.31	.40	.35	.30	.28
8.0	.44	.35	.29	.43	.35	.29	.41	.33	.28	.39	.32	.28	.37	.31	.27	.25
9.0	.40	.32	.26	.39	.31	.26	.37	.30	.25	.36	.29	.25	.34	.28	.24	.22
10.0	.37	.29	.24	.36	.29	.24	.35	.28	.23	.33	.27	.23	.32	.26	.22	.20



C Range: 0 - 360DEG
 C Interval: 22.5DEG
 Test Speed: HIGH
 Temperature:24.2DEG
 Operators:Carl
 Test Date:2022-05-19

γ Range: 0 - 180DEG
 γ Interval: 1.0DEG
 Test System:EVERFINE GO-R5000_V2 SYSTEM V2.0.351
 Humidity:50%
 Test Distance:2.526m [K=1.0000]
 Remarks:

WEC AND CCEC

Test:U:120.1V I:0.1242A P:14.68W PF:0.9844 Lamp Flux:1345.93x1 lm		
NAME: ASD-LFMDR-MV-12N15CC-MS-NK 5000K	TYPE:N/A	WEIGHT:N/A
SPEC.:N/A	DIM.: N/A	SERIAL No.:N/A
MFR.: ASD Lighting corp	SUR.:N/A	Shielding Angle:N/A

ρcc	80%			70%			50%			30%			10%			0
ρw	50%	30%	10%	50%	30%	10%	50%	30%	10%	50%	30%	10%	50%	30%	10%	0
ρfc	20%			20%			20%			20%			20%			0
RCR	RCR:Room Cavity Ratio						Wall Exitance Coefficients(WEC)									
0.0																
1.0	.349	.199	.063	.340	.194	.062	.321	.184	.059	.305	.176	.056	.289	.168	.054	
2.0	.313	.171	.053	.304	.167	.052	.287	.160	.050	.272	.153	.048	.258	.146	.046	
3.0	.283	.150	.045	.275	.147	.044	.260	.141	.043	.247	.135	.041	.234	.130	.040	
4.0	.257	.134	.039	.250	.131	.039	.237	.126	.038	.225	.121	.036	.214	.116	.035	
5.0	.236	.120	.035	.229	.118	.034	.218	.113	.033	.207	.109	.032	.196	.105	.032	
6.0	.217	.109	.031	.212	.107	.031	.201	.103	.030	.191	.099	.029	.182	.096	.028	
7.0	.201	.100	.028	.196	.098	.028	.187	.094	.027	.177	.091	.026	.169	.088	.026	
8.0	.187	.092	.026	.183	.090	.025	.174	.087	.025	.166	.084	.024	.158	.081	.024	
9.0	.175	.085	.024	.171	.083	.023	.163	.081	.023	.155	.078	.022	.148	.075	.022	
10.0	.164	.079	.022	.160	.078	.022	.153	.075	.021	.146	.073	.021	.139	.070	.020	

ρcc	80%			70%			50%			30%			10%			0
ρw	50%	30%	10%	50%	30%	10%	50%	30%	10%	50%	30%	10%	50%	30%	10%	0
ρfc	20%			20%			20%			20%			20%			0
RCR	RCR:Room Cavity Ratio						Ceiling Cavity Exitance Coefficients(CCEC)									
0.0	.255	.255	.255	.218	.218	.218	.149	.149	.149	.086	.086	.086	.027	.027	.027	
1.0	.248	.221	.197	.212	.190	.169	.145	.131	.117	.084	.076	.068	.027	.024	.022	
2.0	.241	.198	.161	.206	.170	.139	.141	.118	.097	.081	.068	.057	.026	.022	.019	
3.0	.233	.180	.139	.200	.156	.120	.137	.108	.084	.079	.063	.050	.025	.021	.016	
4.0	.225	.168	.123	.193	.145	.107	.133	.101	.076	.077	.059	.045	.025	.019	.015	
5.0	.218	.157	.113	.187	.136	.098	.129	.095	.069	.075	.056	.041	.024	.018	.014	
6.0	.210	.149	.105	.181	.129	.092	.125	.090	.065	.072	.053	.039	.023	.017	.013	
7.0	.203	.142	.100	.175	.123	.087	.121	.087	.062	.070	.051	.037	.023	.017	.012	
8.0	.197	.137	.096	.169	.119	.083	.117	.083	.059	.068	.049	.035	.022	.016	.012	
9.0	.191	.132	.092	.164	.114	.080	.114	.080	.057	.066	.048	.034	.021	.016	.011	
10.0	.185	.128	.090	.159	.111	.078	.111	.078	.056	.064	.046	.033	.021	.015	.011	

C Range: 0 - 360DEG
 C Interval: 22.5DEG
 Test Speed: HIGH
 Temperature:24.2DEG
 Operators:Carl
 Test Date:2022-05-19

γ Range: 0 - 180DEG
 γ Interval: 1.0DEG
 Test System:EVERFINE GO-R5000_V2 SYSTEM V2.0.351
 Humidity:50%
 Test Distance:2.526m [K=1.0000]
 Remarks:

UGR(Unified Glare Rating) Table

Test:U:120.1V I:0.1242A P:14.68W PF:0.9844 Lamp Flux:1345.93x1 lm										
NAME: ASD-LFMDR-MV-12N15CC-MS-NK 5000K					TYPE:N/A			WEIGHT:N/A		
SPEC.:N/A					DIM.: N/A			SERIAL No.:N/A		
MFR.: ASD Lighting corp					SUR.:N/A			Shielding Angle:N/A		
ceiling/cavity	0.7	0.7	0.5	0.5	0.3	0.7	0.7	0.5	0.5	0.3
walls	0.5	0.3	0.5	0.3	0.3	0.5	0.3	0.5	0.3	0.3
working plane	0.2	0.2	0.2	0.2	0.2	0.2	0.2	0.2	0.2	0.2
Room dimensions	Viewed crosswise					Viewed endwise				
x = 2H y = 2H	21.9	23.4	22.3	23.7	24.1	22.1	23.5	22.4	23.9	24.2
3H	23.7	25.1	24.1	25.4	25.8	23.9	25.2	24.3	25.6	26.0
4H	24.6	25.9	25.0	26.3	26.7	24.7	26.0	25.2	26.4	26.8
6H	25.5	26.7	25.9	27.1	27.6	25.6	26.8	26.1	27.3	27.7
8H	25.9	27.1	26.4	27.5	28.0	26.1	27.3	26.6	27.7	28.2
12H	26.5	27.6	27.0	28.0	28.5	26.6	27.8	27.1	28.2	28.7
4H 2H	22.6	23.9	23.0	24.3	24.7	22.7	24.0	23.1	24.4	24.8
3H	24.6	25.7	25.1	26.2	26.6	24.7	25.8	25.2	26.3	26.7
4H	25.6	26.6	26.1	27.1	27.6	25.7	26.8	26.2	27.2	27.8
6H	26.7	27.6	27.2	28.1	28.7	26.8	27.7	27.4	28.2	28.8
8H	27.3	28.1	27.8	28.6	29.2	27.4	28.3	28.0	28.8	29.4
12H	27.9	28.7	28.5	29.2	29.8	28.1	28.9	28.6	29.4	30.0
8H 4H	26.0	26.9	26.6	27.4	28.0	26.1	27.0	26.7	27.5	28.1
6H	27.4	28.1	27.9	28.6	29.3	27.5	28.2	28.1	28.8	29.4
8H	28.1	28.8	28.7	29.3	30.0	28.2	28.9	28.8	29.5	30.1
12H	29.0	29.5	29.6	30.1	30.8	29.1	29.7	29.7	30.3	30.9
12H 4H	26.1	26.9	26.7	27.4	28.0	26.2	27.0	26.8	27.5	28.1
6H	27.6	28.2	28.1	28.8	29.4	27.7	28.3	28.2	28.9	29.5
8H	28.4	29.0	29.0	29.5	30.2	28.5	29.1	29.1	29.7	30.3
Variations with the observer position at spacings:										
S = 1.0H	+ 0.1 / - 0.2					+ 0.1 / - 0.1				
1.5H	+ 0.2 / - 0.3					+ 0.2 / - 0.3				
2.0H	+ 0.2 / - 0.3					+ 0.2 / - 0.3				

CIE Pub.117 Corrected 1346 lm Total Lamp Luminous Flux.(8log(F/F0) = 1.0)

C Range: 0 - 360DEG
 C Interval: 22.5DEG
 Test Speed: HIGH
 Temperature:24.2DEG
 Operators:Carl
 Test Date:2022-05-19

γ Range: 0 - 180DEG
 γ Interval: 1.0DEG
 Test System:EVERFINE GO-R5000_V2 SYSTEM V2.0.351
 Humidity:50%
 Test Distance:2.526m [K=1.0000]
 Remarks:

UTILIZATION FACTORS TABLE

Test:U:120.1V I:0.1242A P:14.68W PF:0.9844 Lamp Flux:1345.93x1 lm		
NAME: ASD-LFMDR-MV-12N15CC-MS-NK 5000K	TYPE:N/A	WEIGHT:N/A
SPEC.:N/A	DIM.: N/A	SERIAL No.:N/A
MFR.: ASD Lighting corp	SUR.:N/A	Shielding Angle:N/A

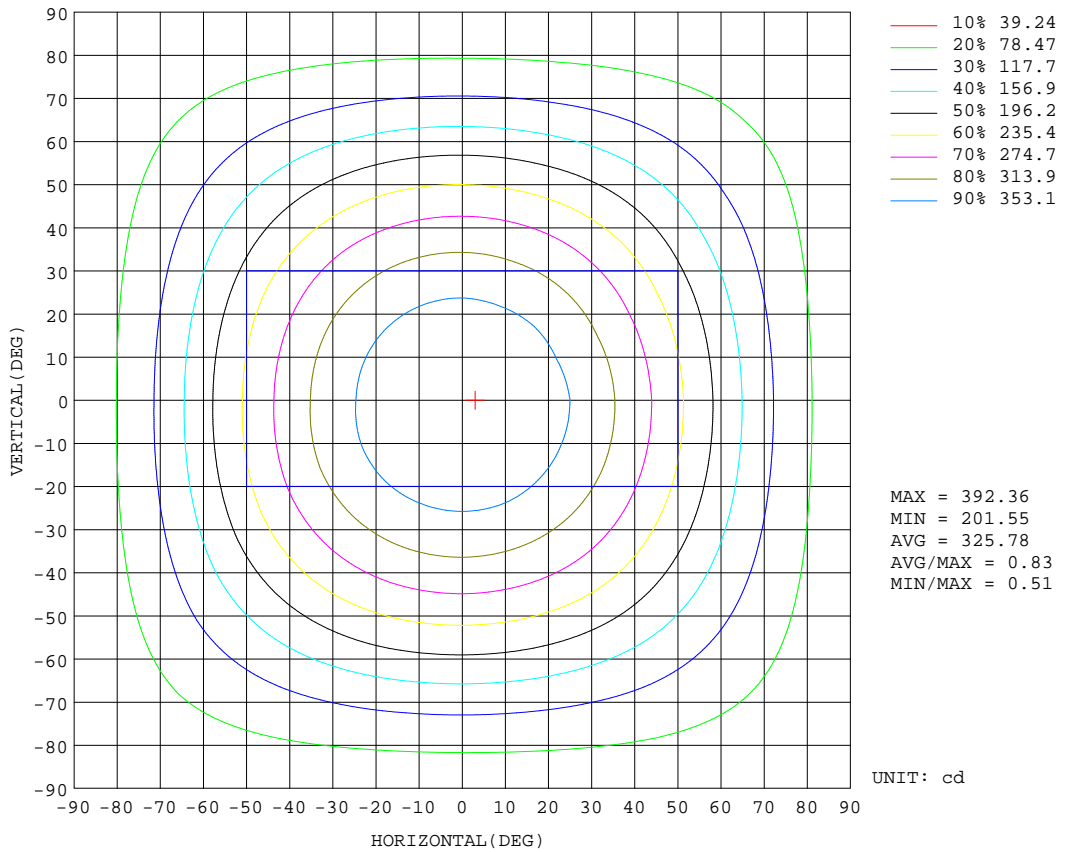
REFLECTANCE										
Ceiling	0.8	0.8	0.8	0.7	0.7	0.7	0.5	0.5	0.5	0
Walls	0.7	0.5	0.3	0.7	0.5	0.3	0.7	0.5	0.3	0
Working plane	0.2	0.2	0.2	0.2	0.2	0.2	0.2	0.2	0.2	0
ROOM INDEX	UTILIZATION FACTORS(PERCENT) $k(RI) \times RCR = 5$									
k = 0.60	53	41	34	52	41	34	51	40	34	27
0.80	63	50	43	61	50	42	59	49	42	35
1.00	71	59	51	69	58	51	66	59	50	42
1.25	78	66	58	76	65	58	72	63	57	48
1.50	83	72	64	81	70	63	77	68	62	53
2.00	90	80	73	87	78	71	83	75	69	60
2.50	94	85	78	91	83	77	86	79	74	64
3.00	97	89	83	95	87	81	89	83	78	67
4.00	102	95	89	99	92	87	93	88	84	72
5.00	104	98	93	101	96	91	95	91	87	75
ROOM INDEX	UF(total)									Direct
According to DIN EN 13032-2 2004			Suspended				SHRNOM = 1.25			

C Range: 0 - 360DEG
 C Interval: 22.5DEG
 Test Speed: HIGH
 Temperature:24.2DEG
 Operators:Carl
 Test Date:2022-05-19

γ Range: 0 - 180DEG
 γ Interval: 1.0DEG
 Test System:EVERFINE GO-R5000_V2 SYSTEM V2.0.351
 Humidity:50%
 Test Distance:2.526m [K=1.0000]
 Remarks:

ISOCANDELA DIAGRAM

Test:U:120.1V I:0.1242A P:14.68W PF:0.9844 Lamp Flux:1345.93x1 lm		
NAME: ASD-LFMDR-MV-12N15CC-MS-NK 5000K	TYPE:N/A	WEIGHT:N/A
SPEC.:N/A	DIM.: N/A	SERIAL No.:N/A
MFR.: ASD Lighting corp	SUR.:N/A	Shielding Angle:N/A

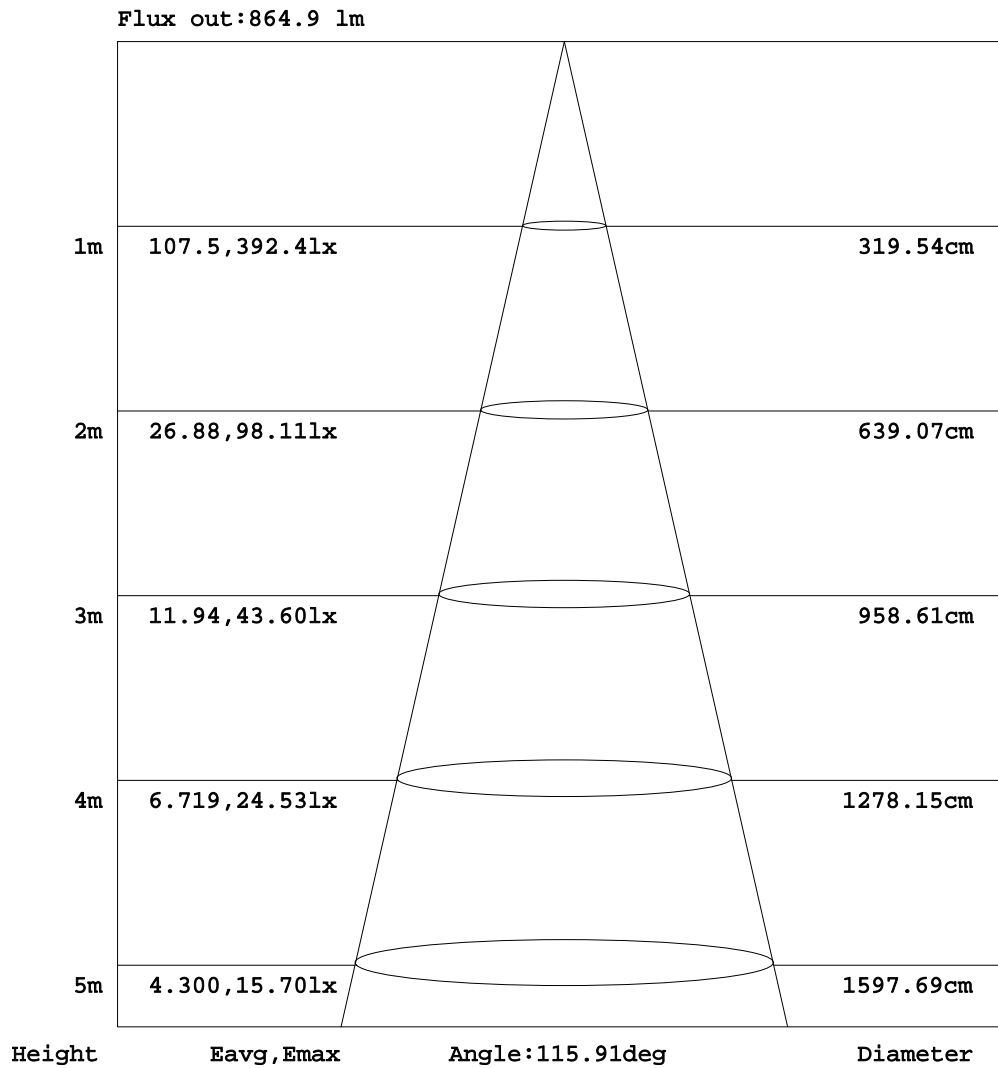


C Range: 0 - 360DEG
 C Interval: 22.5DEG
 Test Speed: HIGH
 Temperature:24.2DEG
 Operators:Carl
 Test Date:2022-05-19

γ Range: 0 - 180DEG
 γ Interval: 1.0DEG
 Test System:EVERFINE GO-R5000_V2 SYSTEM V2.0.351
 Humidity:50%
 Test Distance:2.526m [K=1.0000]
 Remarks:

AAI Figure

Test:U:120.1V I:0.1242A P:14.68W PF:0.9844 Lamp Flux:1345.93x1 lm		
NAME: ASD-LFMDR-MV-12N15CC-MS-NK 5000K	TYPE:N/A	WEIGHT:N/A
SPEC.:N/A	DIM.: N/A	SERIAL No.:N/A
MFR.: ASD Lighting corp	SUR.:N/A	Shielding Angle:N/A

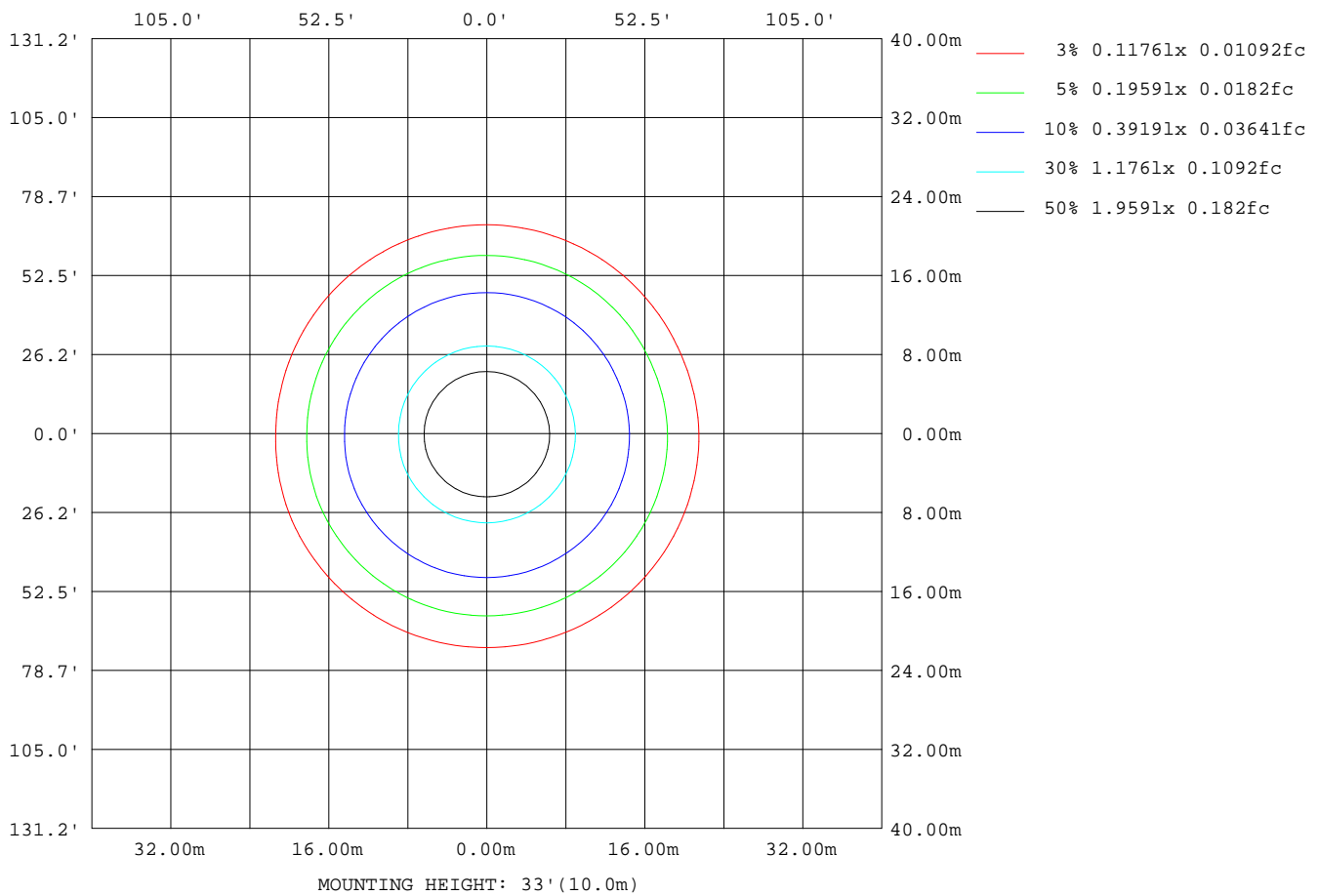


C Range: 0 - 360DEG
 C Interval: 22.5DEG
 Test Speed: HIGH
 Temperature:24.2DEG
 Operators:Carl
 Test Date:2022-05-19

γ Range: 0 - 180DEG
 γ Interval: 1.0DEG
 Test System:EVERFINE GO-R5000_V2 SYSTEM V2.0.351
 Humidity:50%
 Test Distance:2.526m [K=1.0000]
 Remarks:

ISOLUX DIAGRAM

Test:U:120.1V I:0.1242A P:14.68W PF:0.9844 Lamp Flux:1345.93x1 lm		
NAME: ASD-LFMDR-MV-12N15CC-MS-NK 5000K	TYPE:N/A	WEIGHT:N/A
SPEC.:N/A	DIM.: N/A	SERIAL No.:N/A
MFR.: ASD Lighting corp	SUR.:N/A	Shielding Angle:N/A



C Range: 0 - 360DEG
 C Interval: 22.5DEG
 Test Speed: HIGH
 Temperature:24.2DEG
 Operators:Carl
 Test Date:2022-05-19

γ Range: 0 - 180DEG
 γ Interval: 1.0DEG
 Test System:EVERFINE GO-R5000_V2 SYSTEM V2.0.351
 Humidity:50%
 Test Distance:2.526m [K=1.0000]
 Remarks:

LED Avg.L Report

Test:U:120.1V I:0.1242A P:14.68W PF:0.9844 Lamp Flux:1345.93x1 lm		
NAME: ASD-LFMDR-MV-12N15CC-MS-NK 5000K	TYPE:N/A	WEIGHT:N/A
SPEC.:N/A	DIM.: N/A	SERIAL No.:N/A
MFR.: ASD Lighting corp	SUR.:N/A	Shielding Angle:N/A

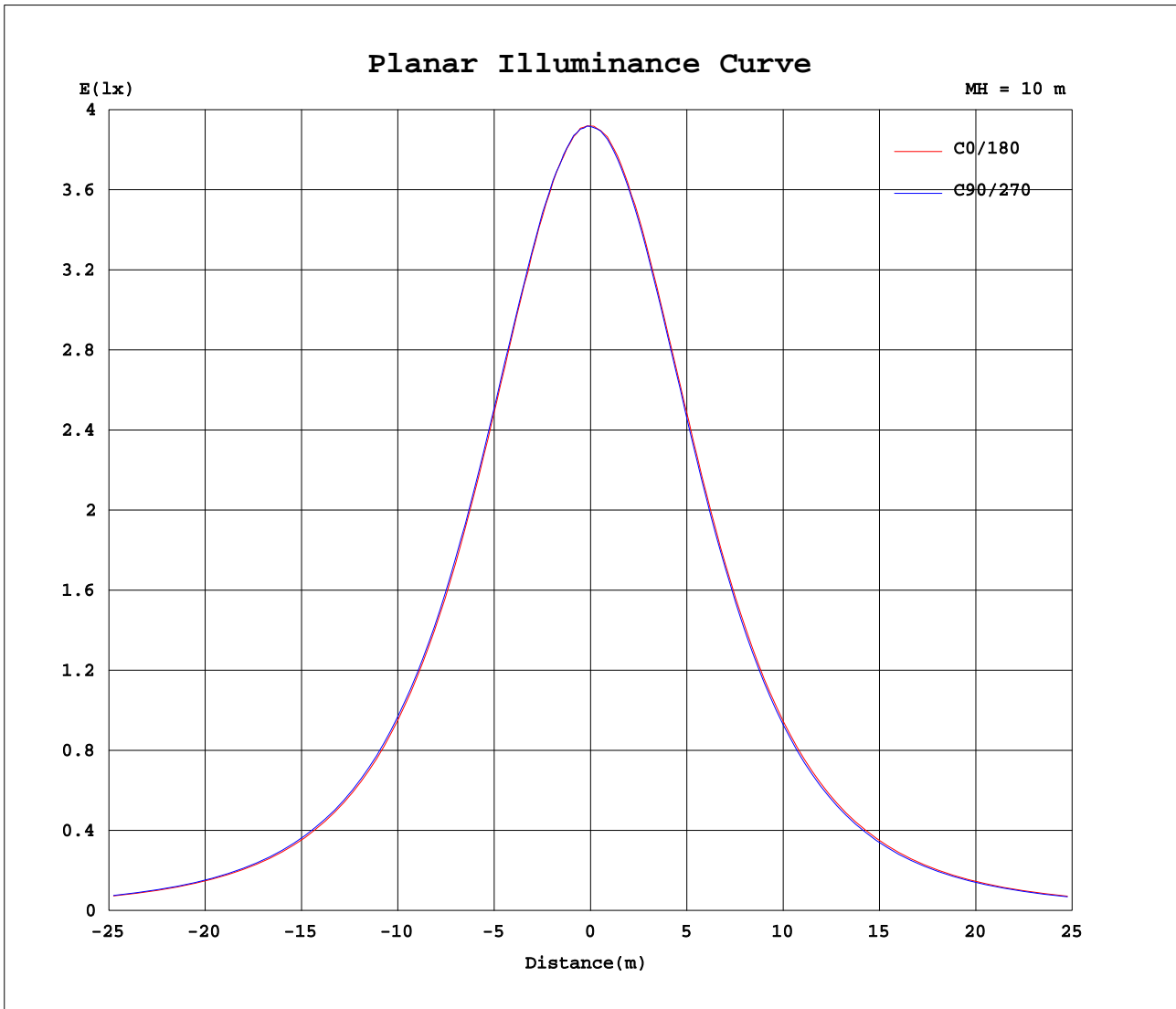
AvgL	cd/m2
L_0~180(65)av	15503
L_0~180(75)av	16714
L_0~180(85)av	30529
L_90~270(65)av	15510
L_90~270(75)av	16666
L_90~270(85)av	30237
L_45(65)av	15503
L_45(75)av	16700
L_45(85)av	30404

Standard: GB/T 29293-2012

C Range: 0 - 360DEG
 C Interval: 22.5DEG
 Test Speed: HIGH
 Temperature:24.2DEG
 Operators:Carl
 Test Date:2022-05-19

γ Range: 0 - 180DEG
 γ Interval: 1.0DEG
 Test System:EVERFINE GO-R5000_V2 SYSTEM V2.0.351
 Humidity:50%
 Test Distance:2.526m [K=1.0000]
 Remarks:

Planar Illuminance Curve



C Range: 0 - 360DEG
 C Interval: 22.5DEG
 Test Speed: HIGH
 Temperature: 24.2DEG
 Operators: Carl
 Test Date: 2022-05-19

γ Range: 0 - 180DEG
 γ Interval: 1.0DEG
 Test System: EVERFINE GO-R5000_V2 SYSTEM V2.0.351
 Humidity: 50%
 Test Distance: 2.526m [K=1.0000]
 Remarks:

LUMINOUS DISTRIBUTION INTENSITY DATA

Test:U:120.1V I:0.1242A P:14.68W PF:0.9844 Lamp Flux:1345.93x1 lm		
NAME: ASD-LFMDR-MV-12N15CC-MS-NK 5000K	TYPE:N/A	WEIGHT:N/A
SPEC.:N/A	DIM.: N/A	SERIAL No.:N/A
MFR.: ASD Lighting corp	SUR.:N/A	Shielding Angle:N/A

Table--1

UNIT: cd

C(DEG)\ γ (DEG)	0	22.5	45	67.5	90	112.5	135	157.5	180	202.5	225	247.5	270	292.5	315	337.5			
0	392	392	392	392	392	392	392	392	392	392	392	392	392	392	392	392			
5	391	390	390	390	392	391	391	390	391	390	389	390	390	390	390	389			
10	386	386	387	386	387	387	387	386	385	385	384	384	384	384	384	384			
15	378	378	378	379	380	380	380	378	378	376	376	376	376	375	375	375			
20	367	367	368	369	369	369	369	368	366	365	364	364	364	364	364	363			
25	353	353	354	355	356	356	356	354	352	351	350	349	350	349	349	349			
30	336	337	337	339	339	339	339	338	334	334	332	332	331	331	331	331			
35	315	317	318	319	320	320	320	318	315	314	312	312	311	310	311	311			
40	294	295	296	297	298	298	297	297	292	291	289	289	288	287	288	289			
45	269	271	272	273	274	274	274	272	268	266	265	263	263	262	263	263			
50	242	244	245	247	248	248	247	246	241	240	238	236	236	234	235	237			
55	215	216	218	219	220	220	219	218	213	211	209	208	207	206	207	208			
60	185	187	189	190	191	191	190	188	183	181	180	178	177	177	178	179			
65	156	158	160	161	162	162	161	159	154	152	151	149	149	148	149	150			
70	129	131	132	133	134	133	133	131	125	124	122	121	120	120	121	122			
75	104	106	107	107	108	108	107	106	101	99.4	98.2	97.2	96.4	96.3	97.0	98.3			
80	82.8	84.1	85.1	85.6	85.5	85.1	84.5	83.3	79.2	78.3	77.4	76.7	75.8	75.7	76.3	77.6			
85	64.8	66.0	66.6	66.6	66.3	66.0	65.4	64.2	61.1	60.4	59.9	59.4	58.4	58.2	58.9	60.2			
90	49.1	50.0	50.4	50.4	49.9	49.5	49.0	47.9	45.4	45.1	44.8	44.4	43.5	43.1	43.8	45.2			
95	36.6	37.5	37.2	36.7	36.5	36.3	35.8	34.8	32.8	32.9	33.4	32.8	32.6	31.8	32.3	34.0			
100	28.5	29.0	28.7	27.8	27.5	27.0	26.7	26.4	25.0	25.7	26.1	25.9	26.0	25.8	26.2	27.3			
105	26.1	25.9	25.3	24.2	23.3	22.6	22.5	22.7	23.1	23.8	24.2	24.4	24.8	25.1	25.6	25.9			
110	26.0	25.7	25.2	24.1	23.1	22.4	22.3	22.5	23.0	23.5	23.9	24.2	24.5	24.9	25.2	25.6			
115	24.6	24.3	23.2	22.1	21.5	21.2	21.1	21.4	21.8	22.3	22.8	23.2	23.5	23.7	23.9	24.2			
120	21.7	20.8	19.4	18.4	18.0	18.2	18.8	19.3	19.6	20.2	20.9	21.3	21.5	21.6	21.5	21.7			
125	18.2	16.6	15.0	14.0	13.7	14.1	15.2	16.5	17.2	17.9	18.5	19.0	19.2	19.2	18.9	18.6			
130	14.1	12.1	10.5	9.47	9.27	9.90	11.3	13.0	14.2	15.2	15.8	16.4	16.4	16.4	15.8	15.2			
135	9.79	7.79	6.33	5.40	5.21	5.89	7.38	9.25	10.5	12.0	12.6	13.2	13.3	13.0	12.2	11.0			
140	5.85	4.46	3.57	2.98	2.89	3.45	4.28	5.91	7.04	8.34	9.16	9.73	9.83	9.31	8.28	6.99			
145	3.54	2.76	2.04	1.67	1.77	1.80	2.63	3.77	4.38	5.18	5.72	6.38	6.08	5.67	4.77	4.03			
150	2.69	1.99	1.70	1.68	1.46	1.48	3.44	2.49	2.69	3.36	3.69	5.31	3.78	3.32	2.73	1.95			
155	1.67	1.98	2.12	1.89	1.49	1.47	1.71	2.77	1.74	2.01	1.70	2.45	2.06	2.07	1.60	1.09			
160	2.00	2.56	1.95	2.49	1.40	1.57	1.64	1.84	1.47	1.48	0.98	2.01	1.60	1.57	1.44	0.81			
165	1.71	2.01	1.94	1.91	1.39	1.17	1.60	1.63	1.46	1.46	0.89	1.13	1.50	1.58	1.59	1.14			
170	1.50	1.94	1.82	1.78	1.45	1.09	1.51	1.53	1.19	1.16	0.88	1.13	1.54	1.46	1.65	0.92			
175	1.46	1.55	1.61	1.69	1.59	1.07	0.93	1.42	0.67	0.73	0.57	0.84	1.18	1.22	0.80	1.16			
180	0.60	0.37	0.17	0.43	0.62	0.63	0.63	0.62	0.64	0.64	0.64	0.64	0.64	0.64	0.64	0.64			

C Range: 0 - 360DEG
 C Interval: 22.5DEG
 Test Speed: HIGH
 Temperature:24.2DEG
 Operators:Carl
 Test Date:2022-05-19

γ Range: 0 - 180DEG
 γ Interval: 1.0DEG
 Test System:EVERFINE GO-R5000_V2 SYSTEM V2.0.351
 Humidity:50%
 Test Distance:2.526m [K=1.0000]
 Remarks: