



LED SURFACE MINI PANEL

► **DESIGN** - LED SURFACE MINI PANEL offers a sleek, low-profile design, ideal for spaces with low ceilings. It's acrylic lens with a 110° beam angle ensures you even light distribution. Smooth triac dimming capabilities from 10% to 100% with modern LED dimmers gives you full control over your space. It is also highly efficient with up to 100 lm/W output.

► **VARIETY** - The fixture comes in round and square shapes in 5-inch, 7-inch, 9-inch, 12-inch, 15-inch, 18-inch, 24-inch and 32-inch with voltage 120V or 120-277V and available in White, Black or Nickel finishes.

► **COLOR SELECTABLE** - You can choose either a 2,700K soft white, 3,000K warm white, 3,500K neutral white, 4,000K cool white, or 5,000K daylight color temperature.

► **INSTALLATION** - The fixture can be installed on either an existing outlet box or a remodeled can by using a retrofit kit with universal TP24 or E26 connectors. It is also suitable for Damp and Wet locations, making it perfect for family room, bedroom or any other common areas.

► **ADVANTAGES** - With a lifespan of 50,000 hours, these fixtures are made to last decades under normal operation! ASD provides a 5-year limited warranty along with ETL certification to guarantee top quality products and safety!

► **OPTIONS:**

MODELS WITH MOTION SENSOR - The built-in microwave motion sensor will turn off the fixture automatically when no motion is detected.

MODELS WITH BATTERY BACK-UP - The built-in battery back-up provide 90 minutes of power in case of emergency.

Catalog number	
Notes	
Type	



Finish:	White	Nickel
	Bronze	Black

Model	Size	Watts	Voltage	Dimmable	Lumens	CCT	Finish	Dimensions	Pre-installed	
MPR ROUND										
ASD-MPR-5D10WH	5 inch	10W	120 V	TRIAC	up to 692 lm	5CCT (2,700/3,000/4,000/5,000/6,000 K)	White	5-5/16" x 1"	-	
ASD-MPR-5D10CC-WH-6PACK	5 inch	10W	120 V	TRIAC	up to 777 lm	3CCT (3,000/4,000/5,000 K)	White	5-5/16" x 1"	-	
ASD-MPR-5D10CC-BR-6PACK	5 inch	10W	120 V	TRIAC	up to 777 lm	3CCT (3,000/4,000/5,000 K)	Bronze	5-5/16" x 1"	-	
ASD-MPR-5D10BK	5 inch	10W	120 V	TRIAC	up to 692 lm	5CCT (2,700/3,000/4,000/5,000/6,000 K)	Black	5-5/16" x 1"	-	
ASD-MPR-5D10CC-BK-6PACK	5 inch	10W	120 V	TRIAC	up to 777 lm	3CCT (3,000/4,000/5,000 K)	Black	5-5/16" x 1"	-	
ASD-MPR-7D15WH	7 inch	15W	120 V	TRIAC	up to 1,262 lm	5CCT (2,700/3,000/4,000/5,000/6,000 K)	White	7-1/16" x 1"	-	
ASD-MPR-7D15CC-WH	7 inch	15W	120 V	TRIAC	up to 1,341 lm	3CCT (3,000/4,000/5,000 K)	White	7-1/16" x 1"	-	
ASD-MPR-7D15CC-WH-6PACK	7 inch	15W	120 V	TRIAC	up to 1,341 lm	3CCT (3,000/4,000/5,000 K)	White	7-1/16" x 1"	-	
ASD-MPR-7D15NK	7 inch	15W	120 V	TRIAC	up to 1,262 lm	5CCT (2,700/3,000/4,000/5,000/6,000 K)	Nickel	7-1/16" x 1"	-	
ASD-MPR-7D15CC-BR-6PACK	7 inch	15W	120 V	TRIAC	up to 1,341 lm	3CCT (3,000/4,000/5,000 K)	Bronze	7-1/16" x 1"	-	
ASD-MPR-7D15BK	7 inch	15W	120 V	TRIAC	up to 1,262 lm	5CCT (2,700/3,000/4,000/5,000/6,000 K)	Black	7-1/16" x 1"	-	
ASD-MPR-7D15CC-BK	7 inch	15W	120 V	TRIAC	up to 1,341 lm	3CCT (3,000/4,000/5,000 K)	Black	7-1/16" x 1"	-	
ASD-MPR-7D15CC-BK-6PACK	7 inch	15W	120 V	TRIAC	up to 1,341 lm	3CCT (3,000/4,000/5,000 K)	Black	7-1/16" x 1"	-	
ASD-MPR-9D18WH	9 inch	18W	120 V	TRIAC	up to 1,664 lm	5CCT (2,700/3,000/4,000/5,000/6,000 K)	White	8-7/8" x 1-3/4"	-	
ASD-MPR-9D18CC-WH	9 inch	18W	120 V	TRIAC	up to 1,614 lm	3CCT (3,000/4,000/5,000 K)	White	8-7/8" x 1"	-	
ASD-MPR-9D18CC-WH-6PACK	9 inch	18W	120 V	TRIAC	up to 1,614 lm	3CCT (3,000/4,000/5,000 K)	White	8-7/8" x 1"	-	
ASD-MPR-9D18NK	9 inch	18W	120 V	TRIAC	up to 1,664 lm	5CCT (2,700/3,000/4,000/5,000/6,000 K)	Nickel	8-7/8" x 1-3/4"	-	
ASD-MPR-9D18CC-BR-6PACK	9 inch	18W	120 V	TRIAC	up to 1,614 lm	3CCT (3,000/4,000/5,000 K)	Bronze	8-7/8" x 1"	-	
ASD-MPR-9D18BK	9 inch	18W	120 V	TRIAC	up to 1,664 lm	5CCT (2,700/3,000/4,000/5,000/6,000 K)	Black	8-7/8" x 1-3/4"	-	
ASD-MPR-9D18CC-BK	9 inch	18W	120 V	TRIAC	up to 1,614 lm	3CCT (3,000/4,000/5,000 K)	Black	8-7/8" x 1"	-	
ASD-MPR-9D18CC-BK-6PACK	9 inch	18W	120 V	TRIAC	up to 1,614 lm	3CCT (3,000/4,000/5,000 K)	Black	8-7/8" x 1"	-	
ASD-MPR-12D24WH	12 inch	24W	120 V	TRIAC	up to 2,145 lm	5CCT (2,700/3,000/4,000/5,000/6,000 K)	White	11-13/16" x 1"	-	
ASD-MPR-12D24CC-WH	12 inch	24W	120 V	TRIAC	up to 2,333 lm	3CCT (3,000/4,000/5,000 K)	White	11-13/16" x 1"	-	
ASD-MPR-MV-12D24WH	12 inch	24W	120-277 V	TRIAC	up to 2,069 lm	5CCT (2,700/3,000/4,000/5,000/6,000 K)	White	11-15/16" x 1"	-	
ASD-MPR-12D24NK	12 inch	24W	120 V	TRIAC	up to 2,145 lm	5CCT (2,700/3,000/4,000/5,000/6,000 K)	Nickel	11-13/16" x 1"	-	
ASD-MPR-12D24CC-BR	12 inch	24W	120 V	TRIAC	up to 2,333 lm	3CCT (3,000/4,000/5,000 K)	Bronze	11-13/16" x 1"	-	
ASD-MPR-12D24BK	12 inch	24W	120 V	TRIAC	up to 2,145 lm	5CCT (2,700/3,000/4,000/5,000/6,000 K)	Black	11-13/16" x 1"	-	
ASD-MPR-12D24CC-BK	12 inch	24W	120 V	TRIAC	up to 2,333 lm	3CCT (3,000/4,000/5,000 K)	Black	11-13/16" x 1"	-	
ASD-MPR-MV-12D24BK	12 inch	24W	120-277 V	TRIAC	up to 2,069 lm	5CCT (2,700/3,000/4,000/5,000/6,000 K)	Black	11-15/16" x 1"	-	
ASD-MPR-15D28WH	15 inch	28W	120-277 V	TRIAC	up to 2,373 lm	5CCT (2,700/3,000/4,000/5,000/6,000 K)	White	14-15/16" x 1-3/16"	-	
ASD-MPR-18D32WH	18 inch	32W	120-277 V	TRIAC	up to 2,687 lm	5CCT (2,700/3,000/4,000/5,000/6,000 K)	White	17-15/16" x 1-3/16"	-	
ASD-MPR-24D38WH	24 inch	38W	120-277 V	TRIAC	up to 2,760 lm	5CCT (2,700/3,000/4,000/5,000/6,000 K)	White	24" x 1-3/16"	-	
ASD-MPR-32D45WH	32 inch	45W	120-277 V	TRIAC	up to 3,902 lm	5CCT (2,700/3,000/4,000/5,000/6,000 K)	White	31-15/16" x 1-3/16"	-	

For most up-to-date spec sheets please refer to asd-lighting.com



LED SURFACE MINI PANEL

Model	Size	Watts	Voltage	Dimmable	Lumens	CCT	Finish	Dimensions	Pre-installed
MPS SQUARE									
ASD-MPS-5D10CC-WH-6PACK	5 inch	10W	120 V	TRIAC	up to 744 lm	3CCT (3,000/4,000/5,000 K)	White	5-5/16" x 5-5/16" x 1-1/8"	-
ASD-MPS-5D10CC-BK-6PACK	5 inch	10W	120 V	TRIAC	up to 744 lm	3CCT (3,000/4,000/5,000 K)	Black	5-5/16" x 5-5/16" x 1-1/8"	-
ASD-MPS-7D15CC-WH-6PACK	7 inch	15W	120 V	TRIAC	up to 1,094 lm	3CCT (3,000/4,000/5,000 K)	White	7-1/16" x 7-1/16" x 1-1/8"	-
ASD-MPS-7D15CC-BK-6PACK	7 inch	15W	120 V	TRIAC	up to 1,094 lm	3CCT (3,000/4,000/5,000 K)	Black	7-1/16" x 7-1/16" x 1-1/8"	-
ASD-MPS-9D18CC-WH	9 inch	18W	120 V	TRIAC	up to 1,452 lm	3CCT (3,000/4,000/5,000 K)	White	8-7/8" x 8-7/8" x 1-1/8"	-
ASD-MPS-9D18CC-WH-6PACK	9 inch	18W	120 V	TRIAC	up to 1,452 lm	3CCT (3,000/4,000/5,000 K)	White	8-7/8" x 8-7/8" x 1-1/8"	-
ASD-MPS-9D18CC-BK	9 inch	18W	120 V	TRIAC	up to 1,452 lm	3CCT (3,000/4,000/5,000 K)	Black	8-7/8" x 8-7/8" x 1-1/8"	-
ASD-MPS-9D18CC-BK-6PACK	9 inch	18W	120 V	TRIAC	up to 1,452 lm	3CCT (3,000/4,000/5,000 K)	Black	8-7/8" x 8-7/8" x 1-1/8"	-
ASD-MPS-12D24WH	12 inch	24W	120 V	TRIAC	up to 1,731 lm	5CCT (2,700/3,000/4,000/5,000/6,000 K)	White	11-13/16" x 11-13/16" x 1-1/8"	-
ASD-MPS-12D24CC-WH	12 inch	24W	120 V	TRIAC	up to 1,824 lm	3CCT (3,000/4,000/5,000 K)	White	11-13/16" x 11-13/16" x 1-1/8"	-
ASD-MPS-12D24BK	12 inch	24W	120 V	TRIAC	up to 1,731 lm	5CCT (2,700/3,000/4,000/5,000/6,000 K)	Black	11-13/16" x 11-13/16" x 1-1/8"	-
ASD-MPS-12D24CC-BK	12 inch	24W	120 V	TRIAC	up to 1,824 lm	3CCT (3,000/4,000/5,000 K)	Black	11-13/16" x 11-13/16" x 1-1/8"	-
MPR-MS ROUND WITH MOTION SENSOR									
ASD-MPR-9N18CC-MS-WH	9 inch	18W	120 V	-	up to 1,430 lm	3CCT (3,000/4,000/5,000 K)	White	8-3/4" x 3/4"	Motion sensor
MPR-EM ROUND WITH BATTERY BACK-UP									
ASD-MPR-7D15CC-EM-WH	7 inch	15W	120 V	TRIAC	up to 1,209 lm	3CCT (3,000/4,000/5,000 K)	White	7-1/16" x 1-3/4"	6W Battery back up
ASD-MPR-7D15WH-EM	7 inch	15W	120 V	TRIAC	up to 1,267 lm	5CCT (2,700/3,000/4,000/5,000/6,000 K)	White	7-1/16" x 1-3/4"	6W Battery back up
ASD-MPR-9D18CC-EM-WH	9 inch	18W	120 V	TRIAC	up to 1,674 lm	3CCT (3,000/4,000/5,000 K)	White	8-7/8" x 1-3/4"	12W Battery back up
ASD-MPR-9D18WH-EM	9 inch	18W	120 V	TRIAC	up to 1,664 lm	5CCT (2,700/3,000/4,000/5,000/6,000 K)	White	8-7/8" x 1-3/4"	6W Battery back up
ASD-SP7-MPR-WH	Sub-plate for 7"							7-1/8" x 1-3/4"	-
ASD-SP9-MPR-WH	Sub-plate for 9"							8-7/8" x 1-1/4"	-

For detailed luminous flux information please refer to Annex 1, page 9.

PRODUCT SPECIFICATIONS:

Construction & Materials						
Housing	Plastic					
Lens	Acrylic					
Finish	White, Nickel, Bronze, Black					
Weight	ASD-MPR-5D10WH	0.1 lbs (0.2 kg)	ASD-MPR-9D18CC-BR-6PACK	6.7 lbs (3 kg)	ASD-MPS-5D10CC-WH-6PACK	3.6 lbs (1.6 kg)
	ASD-MPR-5D10CC-WH-6PACK	3.4 lbs (1.5 kg)	ASD-MPR-9D18BK	0.9 lbs (0.4 kg)	ASD-MPS-5D10CC-BK-6PACK	
	ASD-MPR-5D10BK	0.1 lbs (0.2 kg)	ASD-MPR-9D18CC-BK	1.1 lbs (0.5 kg)	ASD-MPS-7D15CC-WH-6PACK	5.4 lbs (2.4 kg)
	ASD-MPR-5D10CC-BR-6PACK	3.4 lbs (1.5 kg)	ASD-MPR-9D18CC-BK-6PACK	6.7 lbs (3 kg)	ASD-MPS-7D15CC-BK-6PACK	
	ASD-MPR-5D10CC-BK-6PACK	0.8 lbs (0.4 kg)	ASD-MPR-12D24WH	2.2 lbs (1 kg)	ASD-MPS-9D18CC-WH	1.4 lbs (0.6 kg)
	ASD-MPR-7D15WH		ASD-MPR-12D24CC-WH		ASD-MPS-9D18CC-WH-6PACK	7.6 lbs (3.4 kg)
	ASD-MPR-7D15CC-WH	0.8 lbs (0.4 kg)	ASD-MPR-MV-12D24WH	1.5 lbs (0.7 kg)	ASD-MPS-9D18CC-BK	1.4 lbs (0.6 kg)
	ASD-MPR-7D15CC-WH-6PACK	4.9 lbs (2.2 kg)	ASD-MPR-12D24NK	2.2 lbs (1 kg)	ASD-MPS-9D18CC-BK-6PACK	7.6 lbs (3.4 kg)
	ASD-MPR-7D15NK	0.8 lbs (0.4 kg)	ASD-MPR-12D24CC-BR		ASD-MPS-12D24WH	4.5 lbs (2 kg)
	ASD-MPR-7D15CC-BR-6PACK	4.9 lbs (2.2 kg)	ASD-MPR-12D24BK		ASD-MPS-12D24CC-WH	
	ASD-MPR-7D15BK	0.8 lbs (0.4 kg)	ASD-MPR-12D24CC-BK		ASD-MPS-12D24BK	
	ASD-MPR-7D15CC-BK	0.8 lbs (0.4 kg)	ASD-MPR-MV-12D24BK	1.5 lbs (0.7 kg)	ASD-MPS-12D24CC-BK	1 lbs (0.5 kg)
	ASD-MPR-7D15CC-BK-6PACK		4.9 lbs (2.2 kg)	ASD-MPR-15D28WH	2.7 lbs (1.2 kg)	
	ASD-MPR-9D18WH	0.9 lbs (0.4 kg)	ASD-MPR-18D32WH	3.5 lbs (1.6 kg)	ASD-MPR-7D15CC-EM-WH	1.6 lbs (0.7 kg)
	ASD-MPR-9D18CC-WH	1.1 lbs (0.5 kg)	ASD-MPR-24D38WH	6.6 lbs (3 kg)	ASD-MPR-7D15WH-EM	
	ASD-MPR-9D18CC-WH-6PACK	6.7 lbs (3 kg)	ASD-MPR-32D45WH	10.8 lbs (4.9 kg)	ASD-MPR-9D18CC-EM-WH	2.1 lbs (1 kg)
ASD-MPR-9D18NK	0.9 lbs (0.4 kg)			ASD-MPR-9D18WH-EM		
Environmental system						
Work environment	Suitable for Wet Locations		for MV, MPS, MS and EM models: Suitable for Damp Locations			
Operating temperature	-4°F to 113°F (-20°C to 45°C)		for 15-32' models: -4°F to 104°F (-20°C to 40°C)			
L-70 Life	> 50,000 hrs		for MV models: > 30,000 hrs			
Optical system						
Color temperature	3CCT switch (3,000/4,000/5,000 K), 3,000 K by default					
	5CCT switch (2,700/3,000/4,000/5,000/6,000 K), 3,000 K by default					
CRI	> 80		for 15-32' models: > 90			

For most up-to-date spec sheets please refer to asd-lighting.com



LED SURFACE MINI PANEL

Electrical system								
Input voltage	120 V			for MV and 15-32" models: 120-277 V				
Max input current	ASD-MPR-5D10WH	0.09 A	ASD-MPR-9D18CC-BR-6PACK	0.165 A	ASD-MPS-5D10CC-WH-6PACK	0.091 A		
	ASD-MPR-5D10CC-WH-6PACK		ASD-MPR-9D18BK		ASD-MPS-5D10CC-BK-6PACK			
	ASD-MPR-5D10BK		ASD-MPR-9D18CC-BK		ASD-MPS-7D15CC-WH-6PACK			
	ASD-MPR-5D10CC-BR-6PACK		ASD-MPR-9D18CC-BK-6PACK		ASD-MPS-7D15CC-BK-6PACK			
	ASD-MPR-5D10CC-BK-6PACK		ASD-MPR-12D24WH		ASD-MPS-9D18CC-WH			
	ASD-MPR-7D15WH		ASD-MPR-12D24CC-WH		ASD-MPS-9D18CC-WH-6PACK			
	ASD-MPR-7D15CC-WH	ASD-MPR-MV-12D24WH	ASD-MPS-9D18CC-BK	0.165 A				
	ASD-MPR-7D15CC-WH-6PACK	ASD-MPR-12D24NK	ASD-MPS-9D18CC-BK-6PACK					
	ASD-MPR-7D15NK	ASD-MPR-12D24CC-BR	ASD-MPS-12D24WH					
	ASD-MPR-7D15CC-BR-6PACK	ASD-MPR-12D24BK	ASD-MPS-12D24CC-WH					
	ASD-MPR-7D15BK	ASD-MPR-12D24CC-BK	ASD-MPS-12D24BK					
	ASD-MPR-7D15CC-BK	ASD-MPR-MV-12D24BK	ASD-MPS-12D24CC-BK					
	ASD-MPR-7D15CC-BK-6PACK	ASD-MPR-15D28WH	ASD-MPR-9N18CC-MS-WH	0.165 A				
	ASD-MPR-9D18WH	ASD-MPR-18D32WH	ASD-MPR-7D15CC-EM-WH	0.1375 A				
	ASD-MPR-9D18CC-WH	ASD-MPR-24D38WH	ASD-MPR-7D15WH-EM					
	ASD-MPR-9D18CC-WH-6PACK	ASD-MPR-32D45WH	ASD-MPR-9D18CC-EM-WH	0.165 A				
	ASD-MPR-9D18NK		ASD-MPR-9D18WH-EM					
	Inrush current (Action time)	ASD-MPR-5D10WH	0.08 A (0.05 S)	ASD-MPR-9D18CC-BR-6PACK	0.15 A (0.05 S)	ASD-MPS-5D10CC-WH-6PACK	0.08 A (0.1 S)	
ASD-MPR-5D10CC-WH-6PACK		ASD-MPR-9D18BK		0.15 A (0.1 S)	ASD-MPS-5D10CC-BK-6PACK			
ASD-MPR-5D10BK		ASD-MPR-9D18CC-BK		0.15 A (0.05 S)	ASD-MPS-7D15CC-WH-6PACK			
ASD-MPR-5D10CC-BR-6PACK		ASD-MPR-9D18CC-BK-6PACK			ASD-MPS-7D15CC-BK-6PACK			
ASD-MPR-5D10CC-BK-6PACK		ASD-MPR-12D24WH		0.2 A (0.05 S)	ASD-MPS-9D18CC-WH			
ASD-MPR-7D15WH		ASD-MPR-12D24CC-WH			ASD-MPS-9D18CC-WH-6PACK			
ASD-MPR-7D15CC-WH		ASD-MPR-MV-12D24WH	ASD-MPS-9D18CC-BK					
ASD-MPR-7D15CC-WH-6PACK		ASD-MPR-12D24NK	ASD-MPS-9D18CC-BK-6PACK					
ASD-MPR-7D15NK		ASD-MPR-12D24CC-BR	ASD-MPS-12D24WH					
ASD-MPR-7D15CC-BR-6PACK		ASD-MPR-12D24BK	ASD-MPS-12D24CC-WH					
ASD-MPR-7D15BK		ASD-MPR-12D24CC-BK	ASD-MPS-12D24BK	0.2 A (0.1 S)				
ASD-MPR-7D15CC-BK		ASD-MPR-MV-12D24BK	ASD-MPS-12D24CC-BK					
ASD-MPR-7D15CC-BK-6PACK		ASD-MPR-15D28WH	ASD-MPR-9N18CC-MS-WH					
ASD-MPR-9D18WH		ASD-MPR-18D32WH	ASD-MPR-7D15CC-EM-WH					
ASD-MPR-9D18CC-WH		ASD-MPR-24D38WH	ASD-MPR-7D15WH-EM					
ASD-MPR-9D18CC-WH-6PACK		ASD-MPR-32D45WH	ASD-MPR-9D18CC-EM-WH					
ASD-MPR-9D18NK			ASD-MPR-9D18WH-EM	0.15 A (0.1 S)				
Off state power		0W						
Power consumption	ASD-MPR-5D10WH	10W	ASD-MPR-9D18CC-BR-6PACK	18W	ASD-MPS-5D10CC-WH-6PACK	10W		
	ASD-MPR-5D10CC-WH-6PACK		ASD-MPR-9D18BK		ASD-MPS-5D10CC-BK-6PACK			
	ASD-MPR-5D10BK		ASD-MPR-9D18CC-BK		ASD-MPS-7D15CC-WH-6PACK			
	ASD-MPR-5D10CC-BR-6PACK		ASD-MPR-9D18CC-BK-6PACK		ASD-MPS-7D15CC-BK-6PACK			
	ASD-MPR-5D10CC-BK-6PACK		ASD-MPR-12D24WH		ASD-MPS-9D18CC-WH			
	ASD-MPR-7D15WH		ASD-MPR-12D24CC-WH		ASD-MPS-9D18CC-WH-6PACK			
	ASD-MPR-7D15CC-WH	ASD-MPR-MV-12D24WH	ASD-MPS-9D18CC-BK	18W				
	ASD-MPR-7D15CC-WH-6PACK	ASD-MPR-12D24NK	ASD-MPS-9D18CC-BK-6PACK					
	ASD-MPR-7D15NK	ASD-MPR-12D24CC-BR	ASD-MPS-12D24WH					
	ASD-MPR-7D15CC-BR-6PACK	ASD-MPR-12D24BK	ASD-MPS-12D24CC-WH					
	ASD-MPR-7D15BK	ASD-MPR-12D24CC-BK	ASD-MPS-12D24BK					
	ASD-MPR-7D15CC-BK	ASD-MPR-MV-12D24BK	ASD-MPS-12D24CC-BK					
	ASD-MPR-7D15CC-BK-6PACK	ASD-MPR-15D28WH	ASD-MPR-9N18CC-MS-WH	18W				
	ASD-MPR-9D18WH	ASD-MPR-18D32WH	ASD-MPR-7D15CC-EM-WH	15W				
	ASD-MPR-9D18CC-WH	ASD-MPR-24D38WH	ASD-MPR-7D15WH-EM					
	ASD-MPR-9D18CC-WH-6PACK	ASD-MPR-32D45WH	ASD-MPR-9D18CC-EM-WH	18W				
	ASD-MPR-9D18NK		ASD-MPR-9D18WH-EM					
	Power factor	> 0.9						
Output voltage	-	for MV models: 65-85 V	for 5-32" models: 68-92 V		for EM models: 33 V			
Max output current	-	for 18" model: 0.4 A	for 24" model: 0.47 A		for 32" model: 0.56 A			
	for MV, 15" and MPR-7-EM models: 0.35 A		for MPR-9-EM models: 0.45 A					
Surge protection DM/CM	1.25 kV / 1.25 kV		for MV and 15-32" models: 2.5 kV / 2.5 kV					
Dimming compatible controls *				Dimming compatible controls for MV and 15-32" models *				
Brand	Lutron		Leviton		Maxxima	Lutron		
Models	MACL-153MLH-WH	DVCL-153PR	R02-DW6HD-2RW	66721LW	MEW-DM600	MACL-153MLH-WH	Leviton	Calibration
	STCL-153PH-WH	AYCL-153P	R00-RNL06-0TW	DSL06		MRF2-6CL		RHCL453PNICCV4
	PD-6WCL-WH-R	P-PKG1W	R68-06674-POT			DDMX1		
	TGCL-153PH-LA	SCL-153P	6674-POW			R11-DSL06-1TW		

* The list of dimmers is relevant for models without a motion sensor.

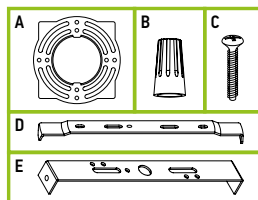
For most up-to-date spec sheets please refer to asd-lighting.com



LED SURFACE MINI PANEL

PACKAGE CONTENTS FOR ROUND MODELS:

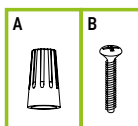
Description	Quantity
LED Round Surface Mini Panel	1
Mounting plate (A) for regular models	1
Wire nut (B)	3
Screw (C)	2
Bracket (D) for MS model	1
Bracket (E) for EM models	1
Box	1



Regular and voluntary certifications
5-year limited warranty (3-year limited warranty for MV models)
cETLus certified 4001256

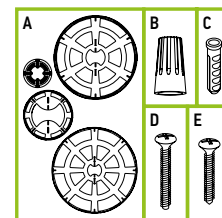
PACKAGE CONTENTS FOR SQUARE MODELS:

Description	Quantity
LED Square Surface Mini Panel	1
Wire nut (A)	3
Screw (B)	2
Box	1



PACKAGE CONTENTS FOR 12-32" MODELS:

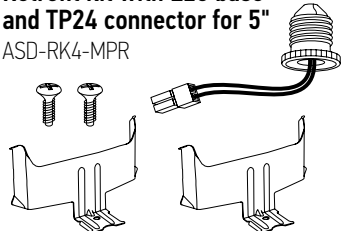
Description	Quantity
LED Round Surface Mini Panel	1
Mounting plate (A)	1
Wire nut (B)	2
Anchor (C)	4 for 15-18"; 6 for 24"; 8 for 32"
Screw (D)	2
Self-taping screw (E)	4 for 15-18"; 6 for 24"; 8 for 32"
Box	1



ACCESSORIES (sold separately):

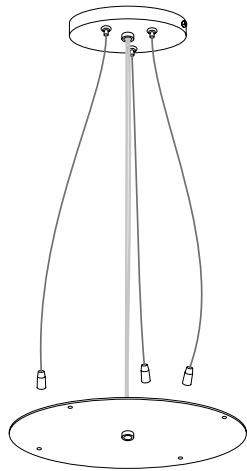
Retrofit kit with E26 base and TP24 connector for 5"

ASD-RK4-MPR



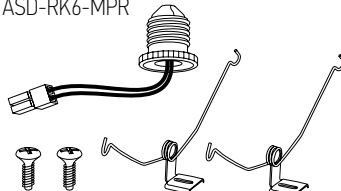
Hanging mounting set

ASD-HS15-MPR-WH



Retrofit kit with E26 base and TP24 connector for 7", 9", 12"

ASD-RK6-MPR



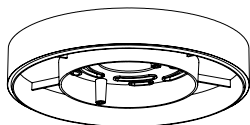
Sub-plate

for 7"

ASD-SP7-MPR-WH

for 9"

ASD-SP9-MPR-WH



ACCESSORY COMPATIBILITY LIST:

Models	Accessories	Retrofit kit with E26 base and TP24 connector for 5"	Retrofit kit with E26 base and TP24 connector for 7", 9", 12"	Sub-plate for 7"	Sub-plate for 9"	Hanging mounting set
		ASD-RK4-MPR	ASD-RK6-MPR	ASD-SP7-MPR-WH	ASD-SP9-MPR-WH	ASD-HS15-MPR-WH
ASD-MPR	5"	•				
	7"		•	•		
	9"		•		•	
	12"		•			
	15"					•
	18"					•
	24"					
ASD-MPS	5"	•				
	7"		•			
	9"		•			
	12"		•			
ASD-MPR-MS	9"		•			
ASD-MPR-EM	7"					
	9"					

For most up-to-date spec sheets please refer to asd-lighting.com



LED SURFACE MINI PANEL

INSTALLATION GUIDE

IMPORTANT SAFETY INFORMATION:

Please read all the instructions below before installation.

- ▶ Make sure that the supply voltage corresponds to the rated product voltage.
- ▶ The product must be installed by a qualified electrician in accordance with the National Electrical Code and corresponding local codes.
- ▶ If the product is damaged, do not use it.

⚠ WARNING

Risk of personal injury – read and follow all warnings and installation instructions. Keep or give to the owner for future reference.

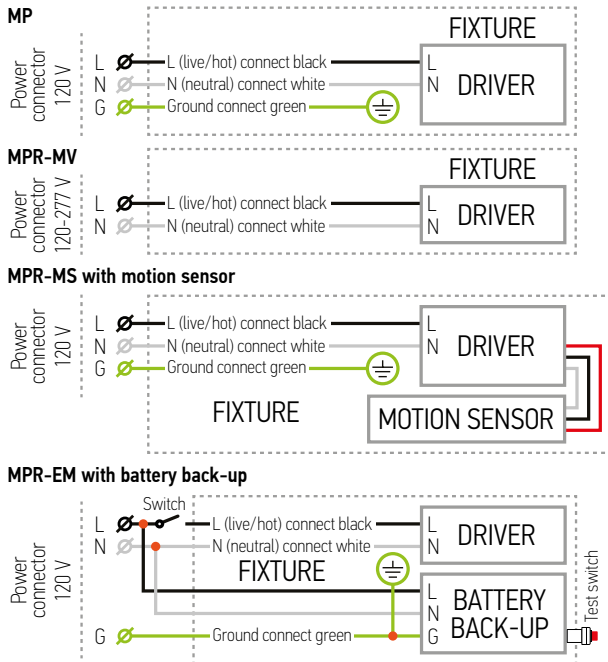
Risk of cuts: Wear gloves to prevent cuts or abrasions when removing from carton, handling, installing, and maintaining this product.

Risk of electric shock: This product must be installed in accordance with the applicable installation code by a person familiar with the construction and operation of the product and the hazards involved.

Risk of Fire: Minimum 194°F supply conductors. Consult a qualified electrician to ensure correct branch circuit conductor.

ASD® assumes no responsibility for claims arising out of improper or careless Installation or handling of this product.

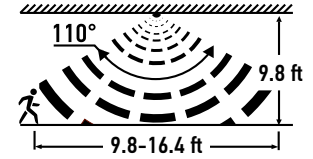
ELECTRICAL SCHEMATIC DIAGRAM:



BUILT-IN MOTION SENSOR INFORMATION

Sensor has two selectable modes:

- **Day mode:**
 The light is ON only when motion detected.
 The light sensing option is OFF.
 Detection range: 9.8-16.4 ft
 Time: 45 sec.
- **Night Mode:**
 The light is ON when illumination is <70 lux (6.5 fc) and motion detected.
 Detection range: 9.8-16.4 ft
 Time: 45 sec.
 If illumination is >200 lux (18.6 fc) the light is always OFF.



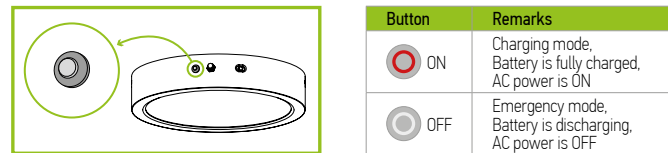
CEILING MOUNTED

⚠ RF interference may affect the operation of this sensor

BUILT-IN BATTERY BACK-UP INFORMATION

Specifications	
Input voltage	100-277 V 50/60 Hz
AC Input current	max 110 mA
AC Input power rating	max 5.0W
Output current and voltage	200 mA 20-36 Vdc 360 mA 20-36 Vdc
Output power	6W 12W
Lumens	400 lm 600 lm
Emergency time	min 90 minutes
Warranty	5 Years
Indicator light	Illuminated test switch
Battery	Li-ion battery - 11.1 V/2200 mAh
Battery charging current	440 mA
Charging time	8 hours
Temperature rating (Ambient)	32°F to 113°F (0°C to 45°C)

STANDARD OPERATION DISPLAY STATUS:



You can disable the battery by double-pressing the test button.

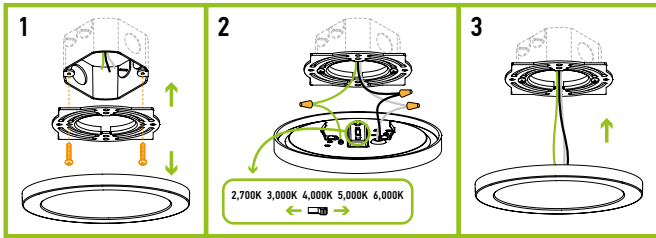
For most up-to-date spec sheets please refer to asd-lighting.com



LED SURFACE MINI PANEL

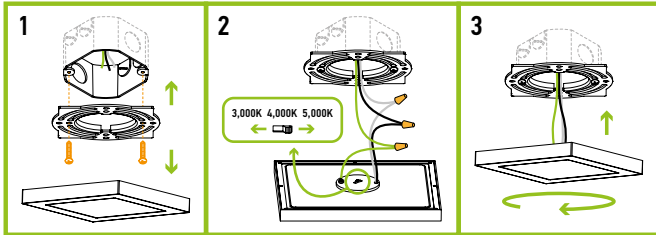
ROUND MODELS INSTALLATION:

1. Remove the mounting plate from the fixture and attach it to the existing outlet box in the ceiling using two screws.
2. Choose preferred color temperature by adjusting the switch. Connect the wires: Black to Black, White to White, Green to Green. Secure the connection with wire nuts.
3. Insert the fixture to the bracket until it clicks.



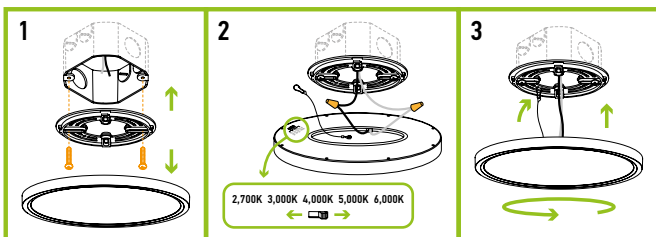
SQUARE MODELS INSTALLATION:

1. Remove the mounting plate from the fixture and attach it to the existing outlet box in the ceiling using two screws.
2. Choose preferred color temperature by adjusting the switch. Connect the wires: Black to Black, White to White, Green to Green. Secure the connection with wire nuts.
3. Insert the fixture to the mounting plate until it clicks.



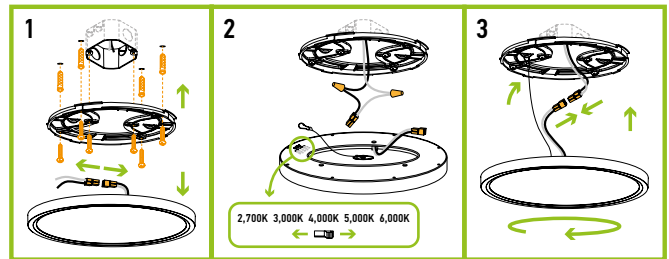
MV MODELS INSTALLATION:

1. Remove the mounting plate from the fixture and attach it to the existing outlet box in the ceiling using two screws.
2. Choose preferred color temperature by adjusting the switch. Connect the wires: Black to Black, White to White. Secure the connection with wire nuts.
3. Hang the safety hook on the mounting plate. Insert the lamp to the bracket and rotate the fixture base counter clockwise until it click.



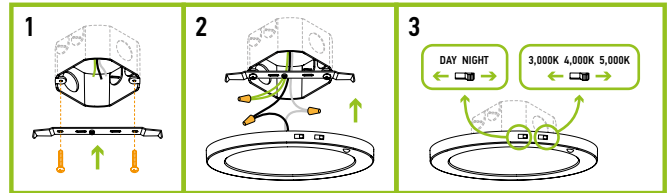
15-32" MODELS INSTALLATION:

1. Disconnect the orange pluggable connector. Remove the mounting plate from the fixture and attach it to the existing outlet box in the ceiling using two mounting screws. Drill four 5/16" size holes on the ceiling for 15" and 18" models, six holes for 24" model, eight holes for 32" model, which will match with the holes on the mounting bracket. Insert drywall anchors into each drilled mounting hole.
2. Choose preferred color temperature by adjusting the switch. Connect the wires: Black to Black, White to White. Secure the connection with wire nuts.
3. Hang the safety hook on the mounting plate. Connect the orange pluggable connector on the lamp base to the pluggable connector that is already plugged into the supply wires. Put all wires into the outlet box. Insert the lamp to the bracket and rotate the fixture base clockwise until it click.



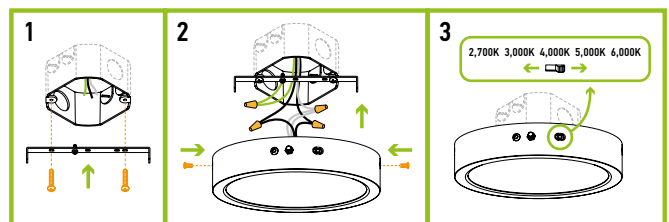
MOTION SENSOR MODELS INSTALLATION:

1. Attach the bracket to the existing outlet box in the ceiling using two screws.
2. Connect the wires: Black to Black, White to White, Green to Green. Secure the connection with wire nuts. Insert the fixture to the bracket until it clicks.
3. Choose preferred color temperature and motion sensor setting by adjusting switch position on the side of the fixture.



BATTERY BACK-UP MODELS INSTALLATION:

1. Attach the bracket to the existing outlet box in the ceiling using two screws
2. Connect the wires: Black to Black, White to White, Green to Green. Secure the connection with wire nuts. Insert the fixture into the bracket and fix it with two fixture screws on both sides of the lamp.
3. Choose needed color temperature by adjusting switch position on the side of the fixture.



For most up-to-date spec sheets please refer to asd-lighting.com

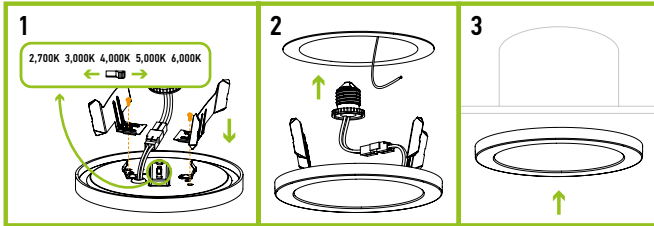


LED SURFACE MINI PANEL

RETROFIT KIT FOR 5" MODELS INSTALLATION

ASD-RK4-MPR sold separately:

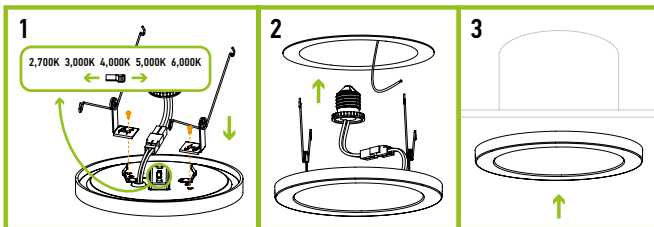
1. Attach spring-loaded clips to the 4" retrofit holes using short screws. Join the TP24 connector to the fixture wires and connect it to the E26 socket adapter. Choose preferred color temperature by adjusting the switch.
2. Screw the E26 socket adapter into the socket in the housing.
3. Press the fixture into the housing.



RETROFIT KIT FOR 7", 9", 12" MODELS

ASD-RK6-MPR sold separately:

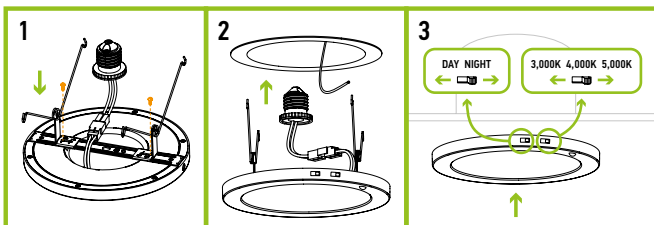
1. Attach spring-loaded clips to the 6" retrofit holes using short screws. Join the TP24 connector to the fixture wires and connect it to the E26 socket adapter. Choose preferred color temperature by adjusting the switch.
2. Screw the E26 socket adapter into the socket in the housing.
3. Press the fixture into the housing.



RETROFIT KIT FOR MOTION SENSOR MODEL

ASD-RK6-MPR sold separately:

1. Fix the bracket to the fixture until it clicks. Attach spring-loaded clips to the bracket using short screws. Join the TP24 connector to the fixture wires and connect it to the E26 socket adapter.
2. Screw the E26 socket adapter into the socket in the housing.
3. Press the fixture into the housing. Choose needed color temperature and motion sensor setting by adjusting switch position on the side of the fixture.

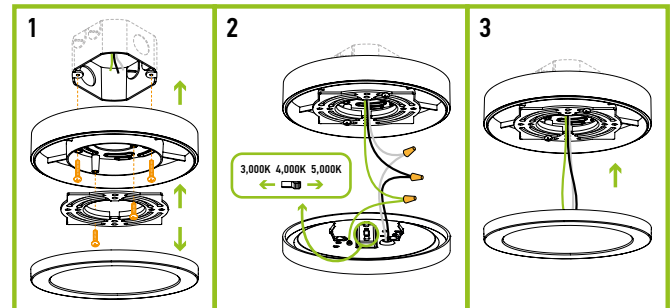


SUB-PLATE INSTALLATION

ASD-SP7-MPR-WH **ASD-SP9-MPR-WH**

sold separately:

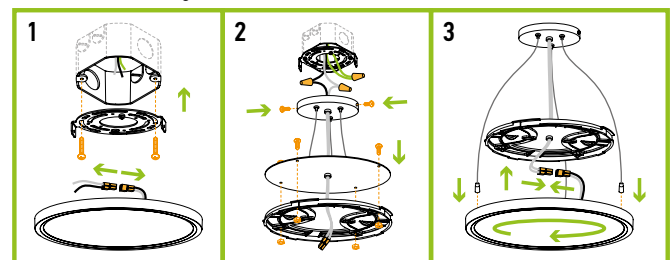
1. Place the subplate on the outlet box in the ceiling and fix it using two screws. Remove the mounting plate from the LED fixture and attach it to the sub-plate with another two screws.
2. Choose preferred color temperature by adjusting the switch. Connect the wires: Black to Black, White to White, Green to Green. Secure the connection with wire nuts.
3. Insert the fixture in to the mounting plate until it clicks.



PENDANT INSTALLATION **ASD-HS24-MPR**

sold separately:

1. Disconnect the orange pluggable connector. Attach the mounting bracket to the outlet using the slotted holes on the mounting bracket and the mounting screws.
2. Connect the power supply wires to the fixture lead wires by connecting the black to the extended black wire, and the white to the extended white wire using nuts. Connect the ground wire to the house ground wire by fixed on the mounting bracket. Put all wiring back into the outlet box. Place the ceiling pan over outlet box, insert the two fixture screws, and tighten to secure the ceiling pan to the ceiling. Use the hex nut and panel screw to tighten the panel and bracket.
3. Connect the orange pluggable connector on the lamp base to the pluggable connector that is already plugged into the supply wires. Rotate the pendant holder clockwise until it is tightened into the fixture base.



For most up-to-date spec sheets please refer to asd-lighting.com



LED SURFACE MINI PANEL

ORDERING INFORMATION

Model	UPC	Pcs. (pack) per carton	Carton size	Carton weight	GTIN 14
MPR ROUND					
ASD-MPR-5D10WH	810128116299	6	10" x 6.7" x 6.1"	1.7 lbs	10810128116296
ASD-MPR-5D10CC-WH-6PACK	810050737654	12 (2)	15.2" x 7.9" x 6.9"	8.2 lbs	10810050737651
ASD-MPR-5D10BK	810128116282	6	10" x 6.7" x 6.1"	1.7 lbs	10810128116289
ASD-MPR-5D10CC-BR-6PACK	810128111720	12 (2)	15.2" x 7.9" x 6.9"	8.2 lbs	10810128111727
ASD-MPR-5D10CC-BK-6PACK	810128110389	12 (2)	15.2" x 7.9" x 6.9"	8.2 lbs	10810128110386
ASD-MPR-7D15WH	810128115117	6	10" x 8.5" x 7.9"	5.3 lbs	10810128115114
ASD-MPR-7D15CC-WH	810050736275	12	16.5" x 10" x 7.9"	12.6 lbs	30810050736276
ASD-MPR-7D15CC-WH-6PACK	810050737661	12 (2)	15.6" x 9.7" x 8.7"	12.2 lbs	10810050737668
ASD-MPR-9D18WH	810128118958	6	10" x 8.5" x 7.9"	5.3 lbs	10810128118955
ASD-MPR-7D15CC-BR-6PACK	810128111744	12 (2)	15.6" x 9.7" x 8.7"	12.2 lbs	10810128111741
ASD-MPR-7D15BK	810128117111	6	10" x 8.5" x 7.9"	5.3 lbs	10810128117118
ASD-MPR-7D15CC-BK	810050736732	12	16.5" x 10" x 7.9"	12.6 lbs	30810050736733
ASD-MPR-7D15CC-BK-6PACK	810050737029	12 (2)	15.6" x 9.7" x 8.7"	12.2 lbs	10810050737026
ASD-MPR-9D18WH	810128117142	6	10.2" x 10" x 9.7"	7.2 lbs	10810128117149
ASD-MPR-9D18CC-WH	810050734622	12	19.7" x 10.2" x 9.7"	17.2 lbs	30810050734623
ASD-MPR-9D18CC-WH-6PACK	810050737678	12 (2)	15.6" x 11.4" x 10"	15.7 lbs	10810050737675
ASD-MPR-9D18NK	810128118965	6	10.2" x 10" x 9.7"	7.2 lbs	10810128118962
ASD-MPR-9D18CC-BR-6PACK	810128111768	12 (2)	15.6" x 11.4" x 10"	15.7 lbs	10810128111765
ASD-MPR-9D18BK	810128117135	6	10.2" x 10" x 9.7"	7.2 lbs	10810128117132
ASD-MPR-9D18CC-BK	810050736749	12	19.7" x 10.2" x 9.7"	17.2 lbs	30810050736740
ASD-MPR-9D18CC-BK-6PACK	819201026753	12 (2)	15.6" x 11.4" x 10"	15.7 lbs	10819201026750
ASD-MPR-12D24WH	810128117166	4	13.2" x 6.9" x 12.6"	10.5 lbs	10810128117163
ASD-MPR-12D24CC-WH	810050736299	4	13.2" x 6.9" x 12.6"	10.5 lbs	30810050736290
ASD-MPR-MV-12D24WH	810128117722	4	13.2" x 6.7" x 13.4"	8.3 lbs	10810128117729
ASD-MPR-12D24NK	810128118972	4	13.2" x 6.9" x 12.6"	10.5 lbs	10810128118979
ASD-MPR-12D24CC-BR	810128111836	4	13.2" x 6.9" x 12.6"	10.5 lbs	10810128111833
ASD-MPR-12D24BK	810128117159	4	13.2" x 6.9" x 12.6"	10.5 lbs	10810128117156
ASD-MPR-12D24CC-BK	819201026760	4	13.2" x 6.9" x 12.6"	10.5 lbs	10819201026767
ASD-MPR-MV-12D24BK	810128117715	4	13.2" x 6.7" x 13.4"	8.3 lbs	10810128117712
ASD-MPR-15D28WH	810128117128	2	17.7" x 5.1" x 18.1"	7.9 lbs	10810128117125
ASD-MPR-18D32WH	810128117296	2	20.9" x 5.1" x 21.3"	10.4 lbs	10810128117293
ASD-MPR-24D38WH	810128117364	2	26.8" x 5.4" x 27.2"	18.1 lbs	10810128117361
ASD-MPR-32D45WH	810128117371	2	35.2" x 6.7" x 35.6"	28.7 lbs	10810128117378
MPS SQUARE					
ASD-MPS-5D10CC-WH-6PACK	819201026746	12 (2)	15" x 8.3" x 6.9"	9.5 lbs	10819201026743
ASD-MPS-5D10CC-BK-6PACK	810128110396	12 (2)	15" x 8.3" x 6.9"	9.5 lbs	10810128110393
ASD-MPS-7D15CC-WH-6PACK	810128110082	12 (2)	15.8" x 9.7" x 8.7"	13.1 lbs	10810128110089
ASD-MPS-7D15CC-BK-6PACK	819201029846	12 (2)	15.8" x 9.7" x 8.7"	13.1 lbs	10819201029843
ASD-MPS-9D18CC-WH	810050737630	12	19.7" x 10.2" x 9.7"	20.6 lbs	10810050737637
ASD-MPS-9D18CC-WH-6PACK	810050737647	12 (2)	15.8" x 11.4" x 10.4"	19 lbs	10810050737644
ASD-MPS-9D18CC-BK	810050738873	12	19.7" x 10.2" x 9.7"	20.6 lbs	10810050738870
ASD-MPS-9D18CC-BK-6PACK	819201029211	12 (2)	15.8" x 11.4" x 10.4"	19 lbs	10819201029218
ASD-MPS-12D24WH	810128118125	4	13.2" x 6.9" x 12.6"	10.8 lbs	10810128118122
ASD-MPS-12D24CC-WH	819201024513	4	13.2" x 6.9" x 12.6"	10.8 lbs	10819201024510
ASD-MPS-12D24BK	810128118989	4	13.2" x 6.9" x 12.6"	10.8 lbs	10810128118986
ASD-MPS-12D24CC-BK	819201026876	4	13.2" x 6.9" x 12.6"	10.8 lbs	10819201026873
MPR-MS ROUND WITH MOTION SENSOR					
ASD-MPR-9N18CC-MS-WH	810050734493	12	19.7" x 8.7" x 9.7"	16.3 lbs	30810050734494
MPR-EM ROUND WITH BATTERY BACK-UP					
ASD-MPR-7D15CC-EM-WH	810050738040	12	18.7" x 17.7" x 9.1"	22.6 lbs	10810050738047
ASD-MPR-7D15WH-EM	810128116268	12	18.7" x 17.7" x 9.1"	22.6 lbs	10810128116265
ASD-MPR-9D18CC-EM-WH	810050738057	12	21.3" x 18.9" x 10.8"	33 lbs	10810050738054
ASD-MPR-9D18WH-EM	810128116275	12	21.3" x 18.9" x 10.8"	33 lbs	10810128116272
ASD-SP7-MPR-WH	810050738064	12	14.8" x 7.9" x 7.7"	5.1 lbs	10810050738061
ASD-SP9-MPR-WH	810128118217	12	18.3" x 7.9" x 9.7"	6.4 lbs	10810128118214

For most up-to-date spec sheets please refer to asd-lighting.com



LED SURFACE MINI PANEL

ACCESSORIES:

Model	Description	UPC	Pcs. in middle box	Middle box size	Middle box weight	GTIN 14 in middle box	Pcs. per carton	Carton size	Carton weight	GTIN 14 in carton
ASD-RK4-MPR	Retrofit kit with E26 base and TP24 connector for 5"	810050731089	12	7.1" x 5.1" x 5.7"	1.3 lbs	10810050731086	48	11" x 7.7" x 12.4"	6 lbs	20810050731083
ASD-RK6-MPR	Retrofit kit with E26 base and TP24 connector for 7", 9", 12"	810050731096	12	7.1" x 5.1" x 5.7"	1.4 lbs	10810050731093	48	11" x 7.7" x 12.4"	6.3 lbs	20810050731090
ASD-HS15-MPR-WH	Hanging mounting set	810128119016	-	-	-	-	4	12.6" x 12.6" x 13"	1.8 lbs	10810128119013

ANNEX 1

Model	Watts	2,700 K	3,000 K	4,000 K	5,000 K	6,000 K
ASD-MPR-5D10WH ASD-MPR-5D10BK	10W	598 lm	626 lm	670 lm	692 lm	683 lm
ASD-MPR-5D10CC-WH-6PACK ASD-MPR-5D10CC-BR-6PACK ASD-MPR-5D10CC-BK-6PACK	10W	-	630 lm	777 lm	727 lm	-
ASD-MPR-7D15WH ASD-MPR-7D15NK ASD-MPR-7D15BK	15W	1,188 lm	1,254 lm	1,262 lm	1,184 lm	1,089 lm
ASD-MPR-7D15CC-WH ASD-MPR-7D15CC-WH-6PACK ASD-MPR-7D15CC-BR-6PACK ASD-MPR-7D15CC-BK ASD-MPR-7D15CC-BK-6PACK	15W	-	1,020 lm	1,341 lm	1,135 lm	-
ASD-MPR-9D18WH ASD-MPR-9D18NK ASD-MPR-9D18BK	18W	1,437 lm	1,524 lm	1,664 lm	1,661 lm	1,624 lm
ASD-MPR-9D18CC-WH ASD-MPR-9D18CC-WH-6PACK ASD-MPR-9D18CC-BR-6PACK ASD-MPR-9D18CC-BK ASD-MPR-9D18CC-BK-6PACK	18W	-	1,315 lm	1,614 lm	1,508 lm	-
ASD-MPR-12D24WH ASD-MPR-12D24NK ASD-MPR-12D24BK	24W	2,004 lm	2,145 lm	2,040 lm	2,126 lm	2,025 lm
ASD-MPR-MV-12D24WH ASD-MPR-MV-12D24BK	24W	1,962 lm	1,970 lm	2,005 lm	2,045 lm	2,069 lm
ASD-MPR-12D24CC-WH ASD-MPR-12D24CC-BR ASD-MPR-12D24CC-BK	24W	-	1,680 lm	2,333 lm	2,067 lm	-
ASD-MPR-15D28WH	28W	2,050 lm	2,246 lm	2,346 lm	2,373 lm	2,295 lm
ASD-MPR-18D32WH	32W	2,343 lm	2,657 lm	2,687 lm	2,625 lm	2,597 lm
ASD-MPR-24D38WH	38W	2,437 lm	2,644 lm	2,760 lm	2,740 lm	2,631 lm
ASD-MPR-32D45WH	45W	3,689 lm	3,811 lm	3,902 lm	3,843 lm	3,768 lm
ASD-MPS-5D10CC-WH-6PACK ASD-MPS-5D10CC-BK-6PACK	10W	-	636 lm	744 lm	683 lm	-
ASD-MPS-7D15CC-WH-6PACK ASD-MPS-7D15CC-BK-6PACK	15W	-	974 lm	1,094 lm	1,021 lm	-
ASD-MPS-9D18CC-WH ASD-MPS-9D18CC-WH-6PACK ASD-MPS-9D18CC-BK ASD-MPS-9D18CC-BK-6PACK	18W	-	1,302 lm	1,452 lm	1,370 lm	-
ASD-MPS-12D24WH ASD-MPS-12D24BK	24W	1,727 lm	1,688 lm	1,714 lm	1,731 lm	1,649 lm
ASD-MPS-12D24CC-WH ASD-MPS-12D24CC-BK	24W	-	1,656 lm	1,824 lm	1,727 lm	-
ASD-MPR-9N18CC-MS-WH	18W	-	1,300 lm	1,430 lm	1,340 lm	-
ASD-MPR-7D15CC-EM-WH	15W	-	1,122 lm	1,209 lm	1,111 lm	-
ASD-MPR-7D15WH-EM	15W	1,115 lm	1,115 lm	1,267 lm	1,251 lm	1,220 lm
ASD-MPR-9D18CC-EM-WH	18W	-	1,412 lm	1,674 lm	1,437 lm	-
ASD-MPR-9D18WH-EM	18W	1,437 lm	1,524 lm	1,664 lm	1,661 lm	1,624 lm

For most up-to-date spec sheets please refer to asd-lighting.com