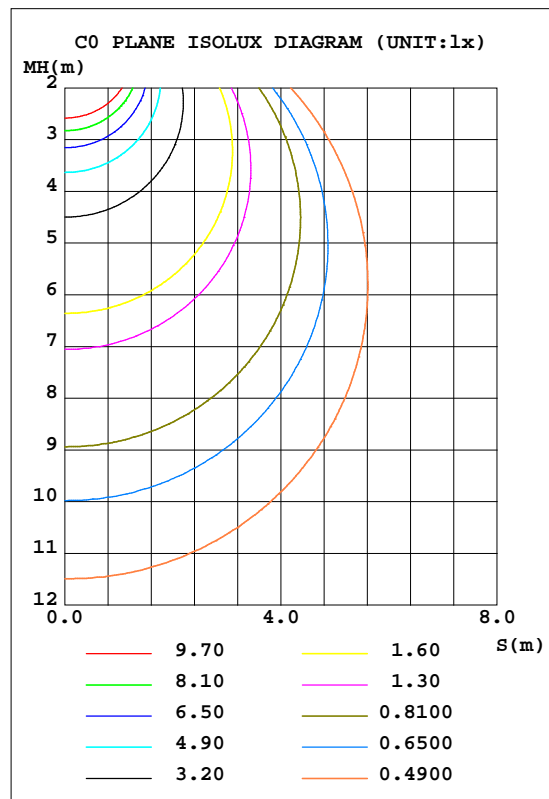
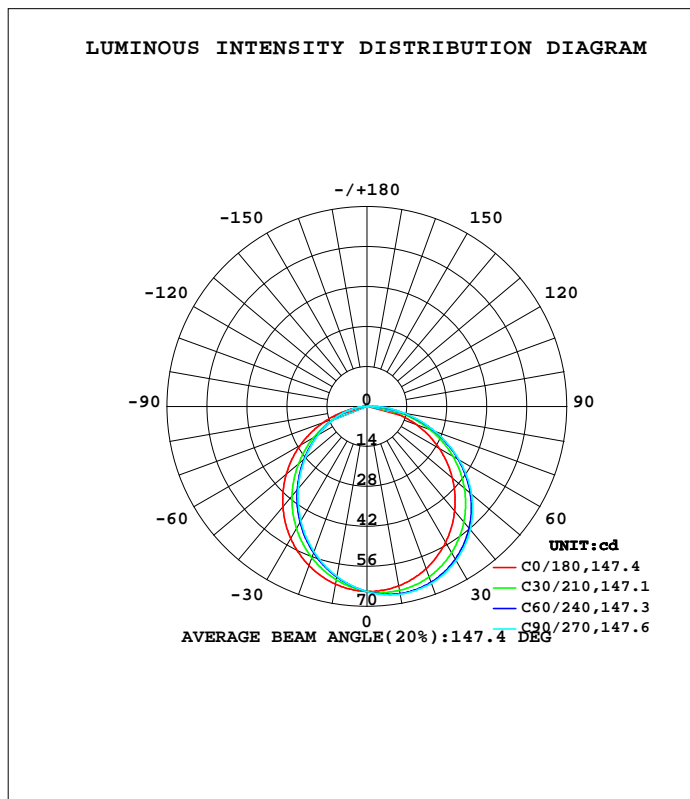


LUMINAIRE PHOTOMETRIC TEST REPORT

Test:U:120.14V I:0.0303A P:3.5585W PF:0.9787 Freq:59.98Hz Lamp Flux:187.004x1 lm		
NAME: ASD-UCB-9D3CC-WH-3000K	TYPE:0	WEIGHT:
SPEC.:3W	DIM.:	SERIAL No.:
MFR.: ASD Lighting Corp	SUR.:	Shielding Angle:

DATA OF LAMP		PHOTOMETRIC DATA			
MODE:ASD-UCB-9D3CC-WH-3000K		Imax(cd)	66.84	S/MH(C0/180)	1.23
NOMINAL POWER(W)	3	LOR(%)	100.0	S/MH(C90/270)	1.09
RATED VOLTAGE(V)	120	TOTAL FLUX(lm)	187.00	h UP, DN(C0-180)	0.7,57.6
NOMINAL FLUX(lm)	187.004	CIE CLASS	DIRECT	h UP, DN(C180-360)	0.3,41.4
LAMPS INSIDE	1	h up(%)	1.0	CIBSE SHR NOM	1.25
TEST VOLTAGE(V)	120	h down(%)	99.0	CIBSE SHR MAX	1.35



C Range: 0 - 360DEG
 C Interval: 15.0DEG
 Test Speed: MEDIUM
 Temperature:25.3DEG
 Operators:
 Test Date:21 April 2021

g Range: 0 - 180DEG
 g Interval: 0.5DEG
 Test System:EVERFINE GO-SPEX500_V1 SYSTEM V2.0.402
 Humidity:65.0%
 Test Distance:3.010m [K=1.0000]
 Remarks:

ZONAL FLUX DIAGRAM

ZONAL FLUX DIAGRAM:

g	C0	C45	C90	C135	C180	C225	C270	C315	g	F zone	F total	%lum,lamp
10	63.78	66.16	66.77	65.65	63.25	61.08	60.44	61.47	0- 10	6.125	6.125	3.28,3.28
20	60.48	64.83	65.88	63.97	59.33	55.35	54.20	56.10	10- 20	17.51	23.64	12.6,12.6
30	55.00	60.94	62.36	59.79	53.42	47.89	46.33	48.92	20- 30	26.44	50.08	26.8,26.8
40	47.80	54.78	56.29	53.46	45.82	39.15	37.42	40.28	30- 40	31.75	81.83	43.8,43.8
50	39.11	46.40	47.80	45.26	36.91	29.64	28.30	30.70	40- 50	32.83	114.7	61.3,61.3
60	29.14	36.12	37.25	35.29	26.88	20.22	19.61	20.98	50- 60	29.65	144.3	77.2,77.2
70	18.27	24.14	25.22	23.76	16.18	11.64	11.88	11.96	60- 70	22.82	167.1	89.4,89.4
80	6.242	11.98	12.90	11.60	5.464	4.838	5.345	4.844	70- 80	13.55	180.7	96.6,96.6
90	0.0924	1.641	2.103	1.184	0.1198	0.4062	0.8679	0.4719	80- 90	4.465	185.1	99,99
100	0.0947	0.6354	0.7228	0.4858	0.1009	0.1198	0.1450	0.1328	90-100	0.5962	185.7	99.3,99.3
110	0.2206	0.2770	0.5486	0.1932	0.1895	0.1843	0.1926	0.1884	100-110	0.3121	186.1	99.5,99.5
120	0.2892	0.1822	0.2311	0.2056	0.2205	0.2022	0.2392	0.2272	110-120	0.2340	186.3	99.6,99.6
130	0.2736	0.3319	0.2234	0.1950	0.2117	0.2133	0.2498	0.2479	120-130	0.2110	186.5	99.7,99.7
140	0.2209	0.3496	0.4059	0.2249	0.2031	0.2142	0.2113	0.2379	130-140	0.1935	186.7	99.8,99.8
150	0.1892	0.1928	0.4702	0.1792	0.1811	0.2114	0.2128	0.2248	140-150	0.1598	186.9	99.9,99.9
160	0.1669	0.1658	0.1660	0.1436	0.1575	0.1385	0.1666	0.1609	150-160	0.0880	186.9	100,100
170	0.1387	0.2047	0.1827	0.1703	0.1352	0.1142	0.1294	0.1448	160-170	0.0503	187.0	100,100
180	0.1557	0.1565	0.1632	0.1665	0.1572	0.1602	0.1598	0.1653	170-180	0.0144	187.0	100,100
DEG	LUMINOUS INTENSITY:cd									UNIT:lm		

C Range: 0 - 360DEG
 C Interval: 15.0DEG
 Test Speed: MEDIUM
 Temperature:25.3DEG
 Operators:
 Test Date:21 April 2021

g Range: 0 - 180DEG
 g Interval: 0.5DEG
 Test System:EVERFINE GO-SPEX500_V1 SYSTEM V2.0.402
 Humidity:65.0%
 Test Distance:3.010m [K=1.0000]
 Remarks:

UGR(Unified Glare Rating) Table

Test:U:120.14V I:0.0303A P:3.5585W PF:0.9787 Freq:59.98Hz Lamp Flux:187.004x1 lm										
NAME: ASD-UCB-9D3CC-WH-3000K					TYPE:0			WEIGHT:		
SPEC.:3W					DIM.:			SERIAL No.:		
MFR.: ASD Lighting Corp					SUR.:			Shielding Angle:		
ceiling/cavity	0.7	0.7	0.5	0.5	0.3	0.7	0.7	0.5	0.5	0.3
walls	0.5	0.3	0.5	0.3	0.3	0.5	0.3	0.5	0.3	0.3
working plane	0.2	0.2	0.2	0.2	0.2	0.2	0.2	0.2	0.2	0.2
Room dimensions	Viewed crosswise					Viewed endwise				
x = 2H y = 2H	6.2	7.7	6.5	8.0	8.2	7.0	8.6	7.3	8.8	9.0
3H	7.8	9.2	8.1	9.4	9.7	8.8	10.2	9.2	10.5	10.8
4H	8.4	9.7	8.7	10.0	10.3	9.6	11.0	10.0	11.2	11.5
6H	8.7	10.0	9.1	10.3	10.6	10.3	11.5	10.6	11.8	12.1
8H	8.8	10.0	9.1	10.3	10.6	10.6	11.8	10.9	12.1	12.4
12H	8.8	9.9	9.1	10.2	10.6	10.8	12.0	11.2	12.3	12.6
4H 2H	7.1	8.4	7.4	8.7	9.0	7.7	9.0	8.0	9.3	9.6
3H	8.8	10.0	9.2	10.3	10.7	9.7	10.8	10.0	11.2	11.5
4H	9.6	10.7	10.0	11.0	11.4	10.6	11.7	11.0	12.0	12.4
6H	10.1	11.0	10.5	11.4	11.8	11.4	12.4	11.8	12.7	13.1
8H	10.2	11.1	10.6	11.5	11.9	11.8	12.7	12.2	13.1	13.5
12H	10.2	11.0	10.7	11.4	11.9	12.1	12.9	12.6	13.3	13.8
8H 4H	10.0	10.9	10.5	11.3	11.7	10.9	11.8	11.3	12.2	12.6
6H	10.7	11.5	11.2	11.9	12.3	11.9	12.7	12.4	13.1	13.5
8H	11.0	11.6	11.4	12.1	12.5	12.4	13.1	12.9	13.5	14.0
12H	11.1	11.6	11.6	12.1	12.6	12.9	13.5	13.4	13.9	14.4
12H 4H	10.1	10.9	10.5	11.3	11.7	10.9	11.7	11.4	12.1	12.6
6H	10.9	11.5	11.4	12.0	12.4	12.0	12.7	12.5	13.1	13.6
8H	11.2	11.7	11.7	12.2	12.7	12.5	13.1	13.0	13.6	14.1
Variations with the observer position at spacings:										
S = 1.0H	+ 0.2 / - 0.2					+ 0.1 / - 0.2				
1.5H	+ 0.3 / - 0.4					+ 0.2 / - 0.3				
2.0H	+ 0.2 / - 0.6					+ 0.1 / - 0.4				

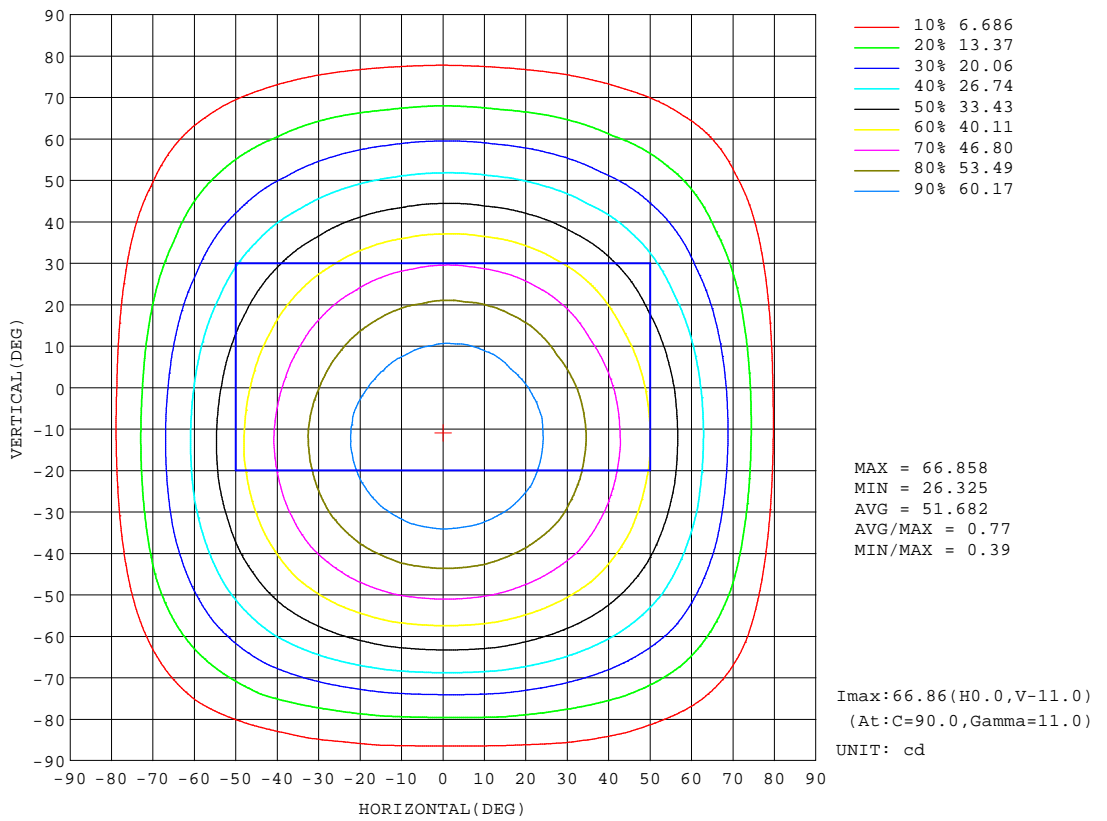
CIE Pub.117, 187.0 lm Total Lamp Luminous Flux Corrected (8log(F/F0) = -5.8)

C Range: 0 - 360DEG
 C Interval: 15.0DEG
 Test Speed: MEDIUM
 Temperature:25.3DEG
 Operators:
 Test Date:21 April 2021

g Range: 0 - 180DEG
 g Interval: 0.5DEG
 Test System:EVERFINE GO-SPEX500_V1 SYSTEM V2.0.402
 Humidity:65.0%
 Test Distance:3.010m [K=1.0000]
 Remarks:

ISOCANDELA DIAGRAM

Test:U:120.14V I:0.0303A P:3.5585W PF:0.9787 Freq:59.98Hz Lamp Flux:187.004x1 lm		
NAME: ASD-UCB-9D3CC-WH-3000K	TYPE:0	WEIGHT:
SPEC.:3W	DIM.:	SERIAL No.:
MFR.: ASD Lighting Corp	SUR.:	Shielding Angle:



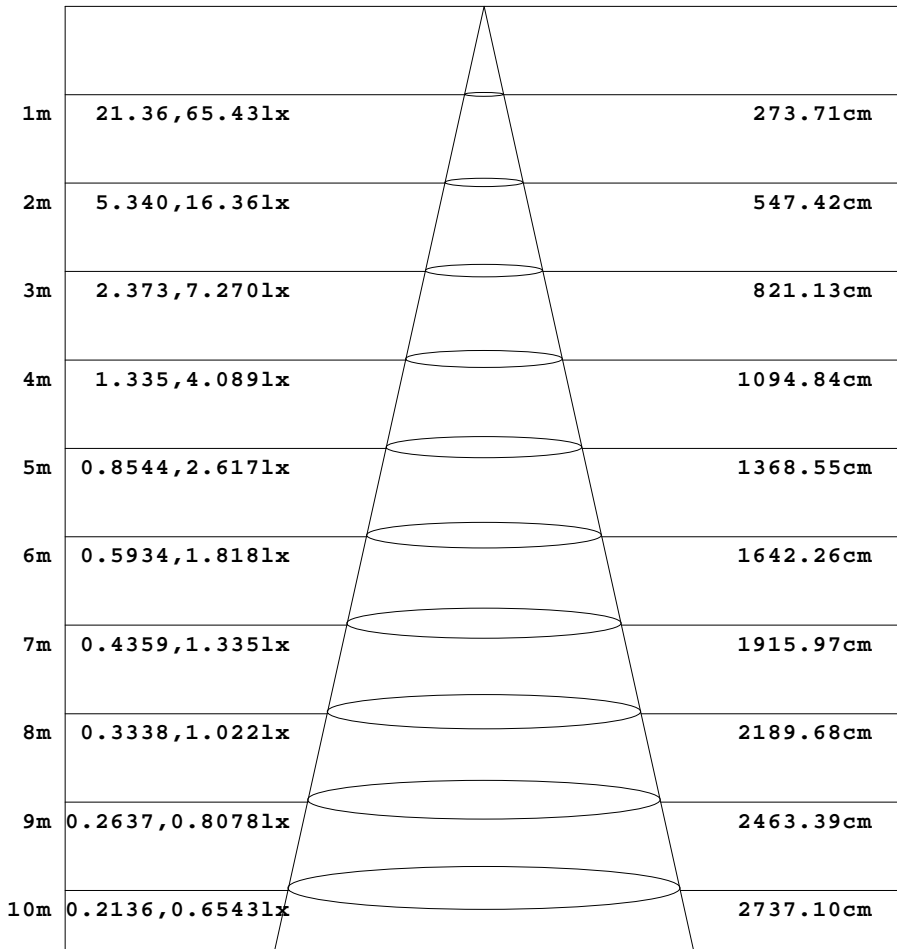
C Range: 0 - 360DEG
 C Interval: 15.0DEG
 Test Speed: MEDIUM
 Temperature:25.3DEG
 Operators:
 Test Date:21 April 2021

g Range: 0 - 180DEG
 g Interval: 0.5DEG
 Test System:EVERFINE GO-SPEX500_V1 SYSTEM V2.0.402
 Humidity:65.0%
 Test Distance:3.010m [K=1.0000]
 Remarks:

AAI Figure

Test:U:120.14V I:0.0303A P:3.5585W PF:0.9787 Freq:59.98Hz Lamp Flux:187.004x1 lm		
NAME: ASD-UCB-9D3CC-WH-3000K	TYPE:0	WEIGHT:
SPEC.:3W	DIM.:	SERIAL No.:
MFR.: ASD Lighting Corp	SUR.:	Shielding Angle:

Flux out:127.1 lm



Height Eavg, Emax Angle:107.69deg Diameter

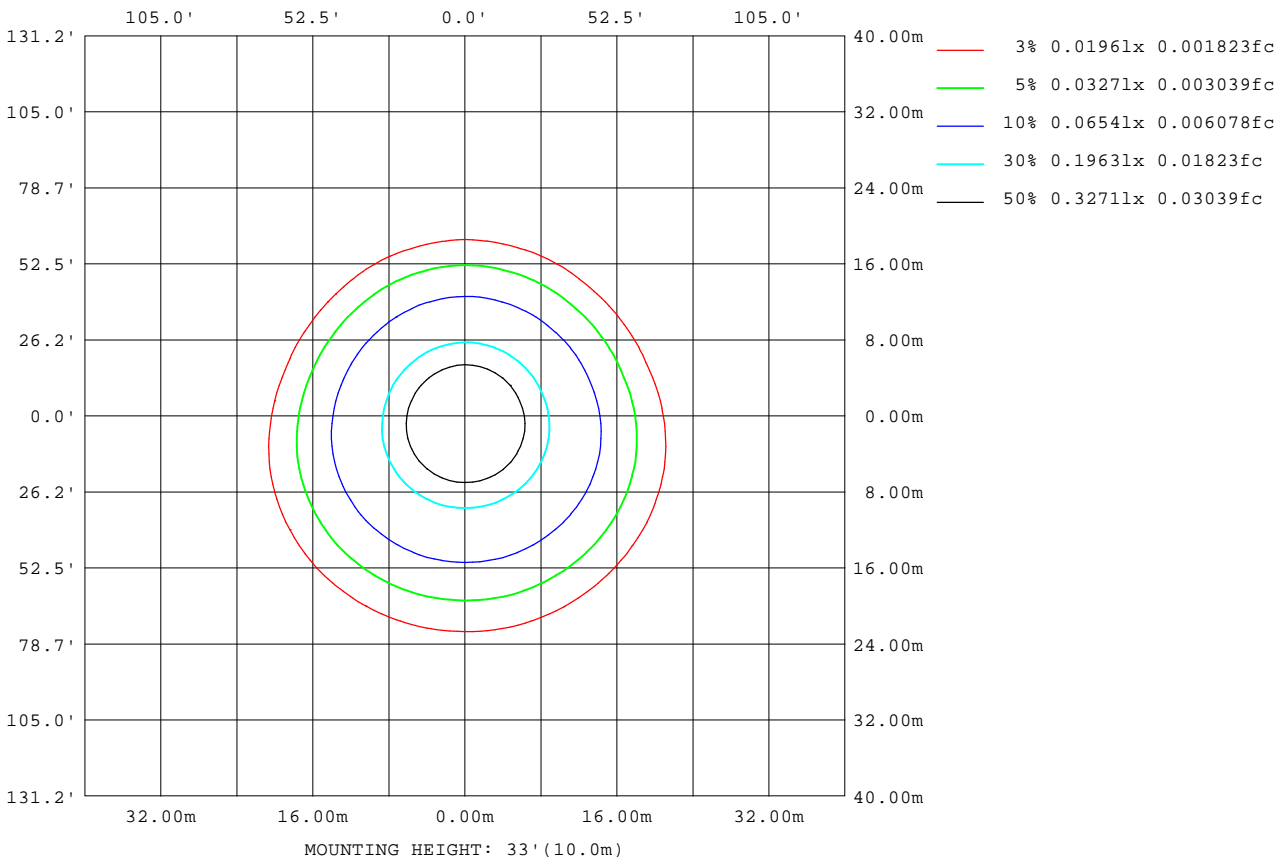
Note:The Curves indicate the illuminated area and the average illumination when the luminaire is at different distance.

C Range: 0 - 360DEG
 C Interval: 15.0DEG
 Test Speed: MEDIUM
 Temperature:25.3DEG
 Operators:
 Test Date:21 April 2021

g Range: 0 - 180DEG
 g Interval: 0.5DEG
 Test System:EVERFINE GO-SPEX500_V1 SYSTEM V2.0.402
 Humidity:65.0%
 Test Distance:3.010m [K=1.0000]
 Remarks:

ISOLUX DIAGRAM

Test:U:120.14V I:0.0303A P:3.5585W PF:0.9787 Freq:59.98Hz Lamp Flux:187.004x1 lm		
NAME: ASD-UCB-9D3CC-WH-3000K	TYPE:0	WEIGHT:
SPEC.:3W	DIM.:	SERIAL No.:
MFR.: ASD Lighting Corp	SUR.:	Shielding Angle:



C Range: 0 - 360DEG
C Interval: 15.0DEG
Test Speed: MEDIUM
Temperature:25.3DEG
Operators:
Test Date:21 April 2021

g Range: 0 - 180DEG
g Interval: 0.5DEG
Test System:EVERFINE GO-SPEX500_V1 SYSTEM V2.0.402
Humidity:65.0%
Test Distance:3.010m [K=1.0000]
Remarks:

LED Avg.L Report

Test:U:120.14V I:0.0303A P:3.5585W PF:0.9787 Freq:59.98Hz Lamp Flux:187.004x1 lm		
NAME: ASD-UCB-9D3CC-WH-3000K	TYPE:0	WEIGHT:
SPEC.:3W	DIM.:	SERIAL No.:
MFR.: ASD Lighting Corp	SUR.:	Shielding Angle:

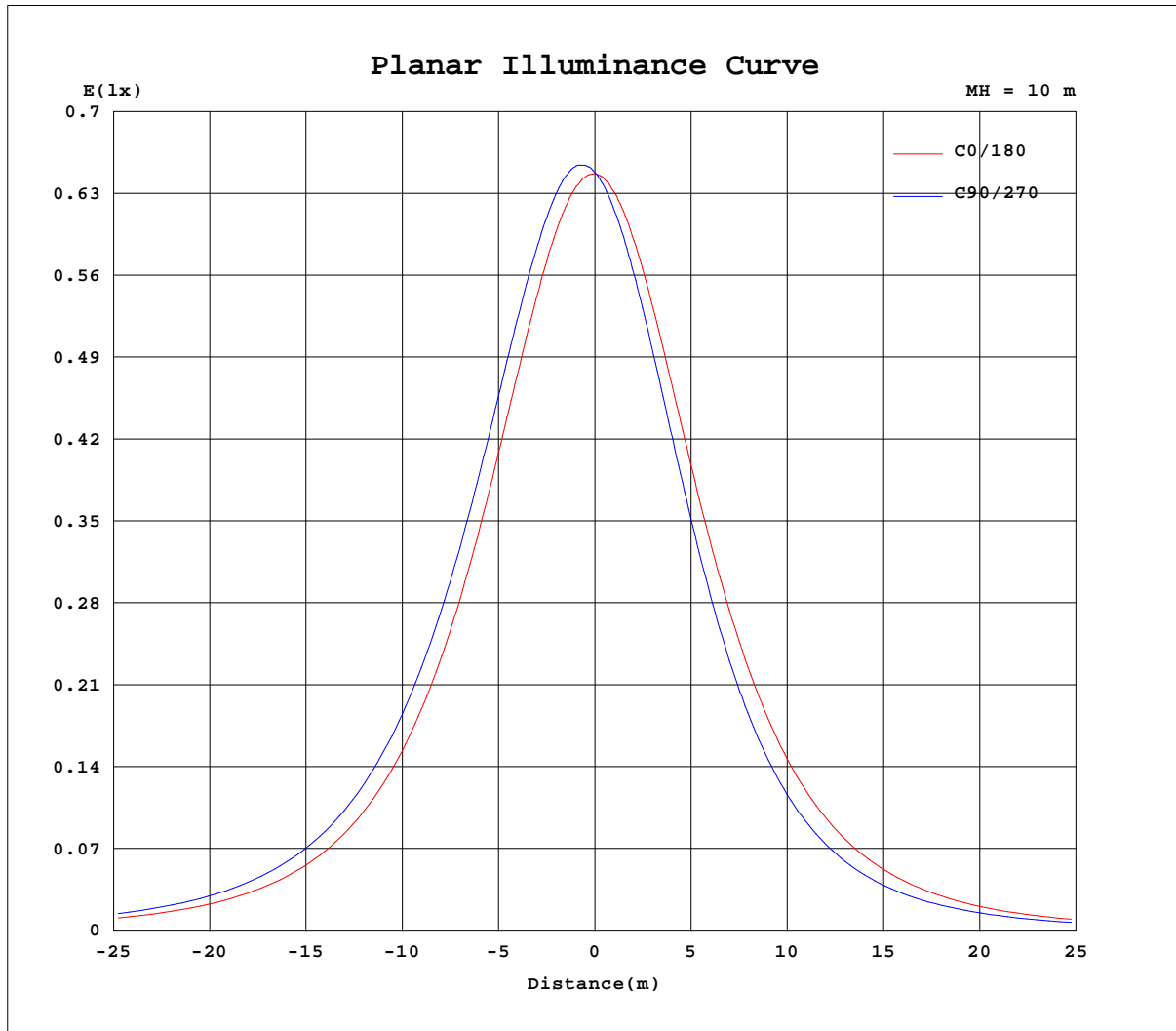
AvgL	cd/m2
L_0~180(65)av	107
L_0~180(75)av	89
L_0~180(85)av	35
L_90~270(65)av	111
L_90~270(75)av	106
L_90~270(85)av	124
L_45(65)av	109
L_45(75)av	100
L_45(85)av	97

Standard: GB/T 29293-2012

C Range: 0 - 360DEG
 C Interval: 15.0DEG
 Test Speed: MEDIUM
 Temperature:25.3DEG
 Operators:
 Test Date:21 April 2021

g Range: 0 - 180DEG
 g Interval: 0.5DEG
 Test System:EVERFINE GO-SPEX500_V1 SYSTEM V2.0.402
 Humidity:65.0%
 Test Distance:3.010m [K=1.0000]
 Remarks:

Planar Illuminance Curve



C Range: 0 - 360DEG
 C Interval: 15.0DEG
 Test Speed: MEDIUM
 Temperature: 25.3DEG
 Operators:
 Test Date: 21 April 2021

g Range: 0 - 180DEG
 g Interval: 0.5DEG
 Test System: EVERFINE GO-SPEX500_V1 SYSTEM V2.0.402
 Humidity: 65.0%
 Test Distance: 3.010m [K=1.0000]
 Remarks:

LUMINOUS DISTRIBUTION INTENSITY DATA

Test:U:120.14V I:0.0303A P:3.5585W PF:0.9787 Freq:59.98Hz Lamp Flux:187.004x1 lm		
NAME: ASD-UCB-9D3CC-WH-3000K	TYPE:0	WEIGHT:
SPEC.:3W	DIM.:	SERIAL No.:
MFR.: ASD Lighting Corp	SUR.:	Shielding Angle:

Table--1

UNIT: cd

C(DEG) g (DEG)	0	15	30	45	60	75	90	105	120	135	150	165	180	195	210	225	240	255	270
0	64.8	64.8	64.8	64.8	64.8	64.8	64.8	64.8	64.8	64.8	64.8	64.8	64.8	64.8	64.8	64.8	64.8	64.8	64.8
5	64.6	65.0	65.3	65.8	66.0	66.1	66.2	66.1	65.7	65.6	65.2	64.8	64.2	63.9	63.4	63.3	63.0	62.9	62.9
10	63.8	64.7	65.4	66.2	66.5	66.7	66.8	66.6	66.2	65.7	64.9	64.2	63.3	62.4	61.7	61.1	60.7	60.4	60.4
15	62.4	63.8	64.8	65.8	66.4	66.6	66.7	66.5	65.9	65.1	64.1	63.0	61.5	60.3	59.3	58.5	57.8	57.5	57.5
20	60.5	62.2	63.5	64.8	65.5	65.8	65.9	65.6	64.9	64.0	62.6	61.1	59.3	57.7	56.4	55.3	54.6	54.2	54.2
25	58.0	60.1	61.7	63.1	64.0	64.3	64.4	64.1	63.3	62.1	60.5	58.8	56.6	54.7	53.1	51.8	50.9	50.3	50.4
30	55.0	57.4	59.2	60.9	61.8	62.3	62.4	62.1	60.9	59.8	57.9	55.9	53.4	51.1	49.3	47.9	46.9	46.3	46.3
35	51.6	54.3	56.3	58.1	59.0	59.5	59.6	59.3	58.2	56.8	54.8	52.6	49.8	47.4	45.3	43.6	42.6	41.9	41.9
40	47.8	50.6	52.8	54.8	55.7	56.3	56.3	56.0	54.9	53.5	51.2	48.9	45.8	43.1	40.9	39.2	38.0	37.4	37.4
45	43.6	46.6	48.9	50.9	51.7	52.3	52.3	52.1	51.0	49.6	47.2	44.7	41.5	38.6	36.2	34.5	33.4	32.8	32.9
50	39.1	42.3	44.6	46.4	47.2	47.8	47.8	47.6	46.6	45.3	42.9	40.3	36.9	33.8	31.4	29.6	28.8	28.3	28.3
55	34.2	37.5	39.8	41.6	42.2	42.8	42.8	42.7	41.7	40.4	38.1	35.5	32.0	28.7	26.4	24.9	24.2	23.8	23.9
60	29.1	32.5	34.7	36.1	36.7	37.4	37.3	37.1	36.4	35.3	33.1	30.5	26.9	23.6	21.5	20.2	19.8	19.5	19.6
65	23.8	27.1	29.2	30.3	31.0	31.6	31.4	31.3	30.6	29.7	27.7	25.2	21.5	18.3	16.7	15.8	15.7	15.5	15.7
70	18.3	21.4	23.3	24.1	24.9	25.4	25.2	25.1	24.6	23.8	22.0	19.7	16.2	13.2	12.2	11.6	11.8	11.6	11.9
75	12.4	15.4	17.0	18.0	18.7	19.2	18.9	18.9	18.3	17.7	16.1	14.2	10.7	8.53	8.08	8.04	8.23	8.31	8.41
80	6.24	8.97	10.7	12.0	12.6	13.1	12.9	12.9	12.2	11.6	9.46	7.70	5.46	4.58	4.65	4.84	5.12	5.25	5.35
85	1.31	3.87	5.18	6.80	7.79	7.99	8.11	8.07	7.29	5.78	4.40	2.86	1.73	1.72	1.96	2.18	2.48	2.62	2.72
90	0.09	0.89	1.13	1.64	1.76	2.12	2.10	1.74	1.30	1.18	0.92	0.36	0.12	0.16	0.24	0.41	0.70	0.68	0.87
95	0.06	0.07	0.12	1.23	1.90	2.87	3.06	2.54	1.91	0.57	0.07	0.12	0.05	0.06	0.07	0.08	0.09	0.11	0.11
100	0.09	0.09	0.27	0.64	0.56	0.73	0.72	0.60	0.31	0.49	0.12	0.09	0.10	0.10	0.11	0.12	0.12	0.15	0.14
105	0.17	0.12	0.18	0.46	0.75	1.11	1.07	0.93	0.33	0.33	0.09	0.15	0.15	0.15	0.15	0.16	0.16	0.16	0.16
110	0.22	0.19	0.13	0.28	0.52	0.63	0.55	0.57	0.20	0.19	0.13	0.20	0.19	0.18	0.18	0.18	0.19	0.19	0.19
115	0.26	0.25	0.15	0.18	0.30	0.40	0.33	0.33	0.14	0.15	0.22	0.24	0.21	0.21	0.21	0.20	0.22	0.22	0.22
120	0.29	0.29	0.16	0.18	0.20	0.25	0.23	0.20	0.15	0.21	0.29	0.29	0.22	0.22	0.23	0.20	0.24	0.24	0.24
125	0.30	0.31	0.20	0.25	0.22	0.21	0.19	0.18	0.20	0.29	0.21	0.30	0.23	0.23	0.23	0.21	0.21	0.24	0.25
130	0.27	0.28	0.17	0.33	0.28	0.23	0.22	0.24	0.30	0.19	0.25	0.27	0.21	0.21	0.21	0.21	0.23	0.25	0.25
135	0.24	0.22	0.18	0.31	0.36	0.33	0.32	0.34	0.39	0.19	0.18	0.22	0.20	0.20	0.20	0.22	0.23	0.21	0.22
140	0.22	0.19	0.19	0.35	0.43	0.41	0.41	0.43	0.44	0.22	0.18	0.18	0.20	0.19	0.20	0.21	0.22	0.22	0.21
145	0.20	0.18	0.19	0.22	0.46	0.47	0.46	0.46	0.45	0.19	0.17	0.17	0.19	0.18	0.19	0.21	0.21	0.22	0.22
150	0.19	0.18	0.18	0.19	0.19	0.47	0.47	0.45	0.19	0.18	0.16	0.20	0.18	0.18	0.17	0.21	0.19	0.20	0.21
155	0.18	0.23	0.17	0.18	0.18	0.19	0.18	0.18	0.17	0.16	0.22	0.21	0.17	0.16	0.16	0.17	0.17	0.18	0.19
160	0.17	0.25	0.24	0.17	0.21	0.18	0.17	0.23	0.18	0.14	0.24	0.19	0.16	0.15	0.14	0.14	0.15	0.17	0.17
165	0.15	0.21	0.24	0.26	0.23	0.26	0.26	0.24	0.22	0.23	0.22	0.15	0.14	0.14	0.12	0.13	0.13	0.14	0.14
170	0.14	0.17	0.22	0.20	0.16	0.18	0.18	0.17	0.17	0.17	0.18	0.13	0.14	0.13	0.12	0.11	0.11	0.12	0.13
175	0.14	0.14	0.16	0.18	0.18	0.20	0.19	0.19	0.18	0.15	0.14	0.13	0.13	0.13	0.11	0.12	0.14	0.14	0.14
180	0.16	0.15	0.15	0.16	0.16	0.16	0.16	0.16	0.16	0.17	0.17	0.17	0.16	0.15	0.15	0.16	0.15	0.16	0.16

C Range: 0 - 360DEG

C Interval: 15.0DEG

Test Speed: MEDIUM

Temperature:25.3DEG

Operators:

Test Date:21 April 2021

g Range: 0 - 180DEG

g Interval: 0.5DEG

Test System:EVERFINE GO-SPEX500_V1 SYSTEM V2.0.402

Humidity:65.0%

Test Distance:3.010m [K=1.0000]

Remarks:

LUMINOUS DISTRIBUTION INTENSITY DATA

Test:U:120.14V I:0.0303A P:3.5585W PF:0.9787 Freq:59.98Hz Lamp Flux:187.004x1 lm		
NAME: ASD-UCB-9D3CC-WH-3000K	TYPE:0	WEIGHT:
SPEC.:3W	DIM.:	SERIAL No.:
MFR.: ASD Lighting Corp	SUR.:	Shielding Angle:

Table--2

UNIT: cd

C(DEG) g (DEG)	285	300	315	330	345														
0	64.8	64.8	64.8	64.8	64.8														
5	63.0	63.2	63.4	63.8	64.1														
10	60.6	60.9	61.5	62.2	62.8														
15	57.8	58.2	59.0	60.0	61.0														
20	54.4	55.0	56.1	57.4	58.6														
25	50.7	51.5	52.7	54.2	55.7														
30	46.7	47.5	48.9	50.6	52.4														
35	42.3	43.3	44.7	46.6	48.6														
40	37.8	38.8	40.3	42.3	44.5														
45	33.2	34.1	35.6	37.7	40.1														
50	28.6	29.4	30.7	32.9	35.4														
55	24.1	24.7	25.8	28.0	30.5														
60	19.7	20.2	21.0	22.9	25.3														
65	15.5	15.9	16.3	17.8	20.0														
70	11.7	11.9	12.0	13.0	14.6														
75	8.31	8.27	8.16	8.52	9.45														
80	5.22	5.10	4.84	4.80	5.06														
85	2.57	2.43	2.16	2.01	1.81														
90	0.71	0.70	0.47	0.40	0.29														
95	0.10	0.10	0.11	0.09	0.13														
100	0.13	0.12	0.13	0.14	0.14														
105	0.16	0.15	0.16	0.18	0.19														
110	0.19	0.18	0.19	0.21	0.23														
115	0.22	0.21	0.21	0.22	0.24														
120	0.24	0.22	0.23	0.24	0.26														
125	0.23	0.23	0.25	0.26	0.24														
130	0.25	0.23	0.25	0.25	0.22														
135	0.23	0.24	0.25	0.24	0.21														
140	0.21	0.24	0.24	0.23	0.22														
145	0.22	0.21	0.24	0.22	0.23														
150	0.21	0.22	0.22	0.22	0.25														
155	0.20	0.18	0.18	0.19	0.23														
160	0.17	0.15	0.16	0.16	0.18														
165	0.14	0.15	0.14	0.15	0.15														
170	0.13	0.13	0.14	0.15	0.15														
175	0.14	0.14	0.15	0.16	0.17														
180	0.16	0.16	0.17	0.17	0.17														

C Range: 0 - 360DEG
 C Interval: 15.0DEG
 Test Speed: MEDIUM
 Temperature:25.3DEG
 Operators:
 Test Date:21 April 2021

g Range: 0 - 180DEG
 g Interval: 0.5DEG
 Test System:EVERFINE GO-SPEX500_V1 SYSTEM V2.0.402
 Humidity:65.0%
 Test Distance:3.010m [K=1.0000]
 Remarks: