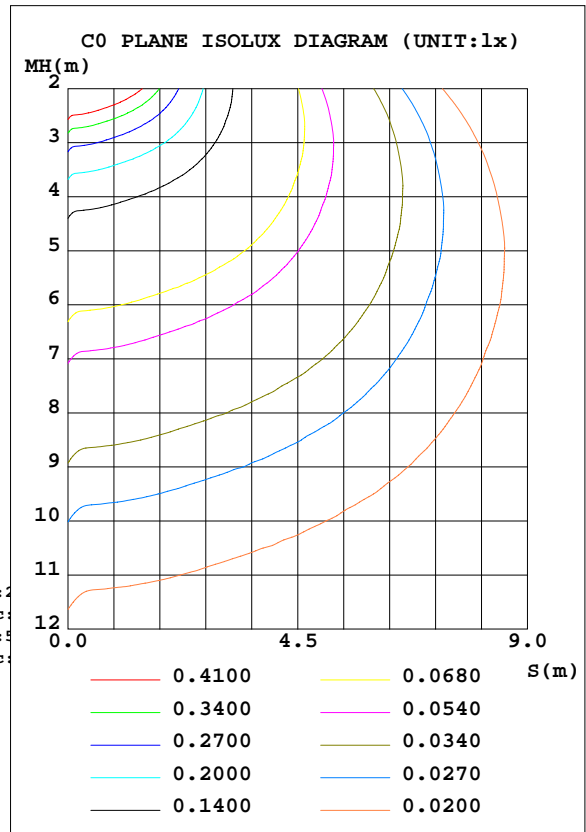
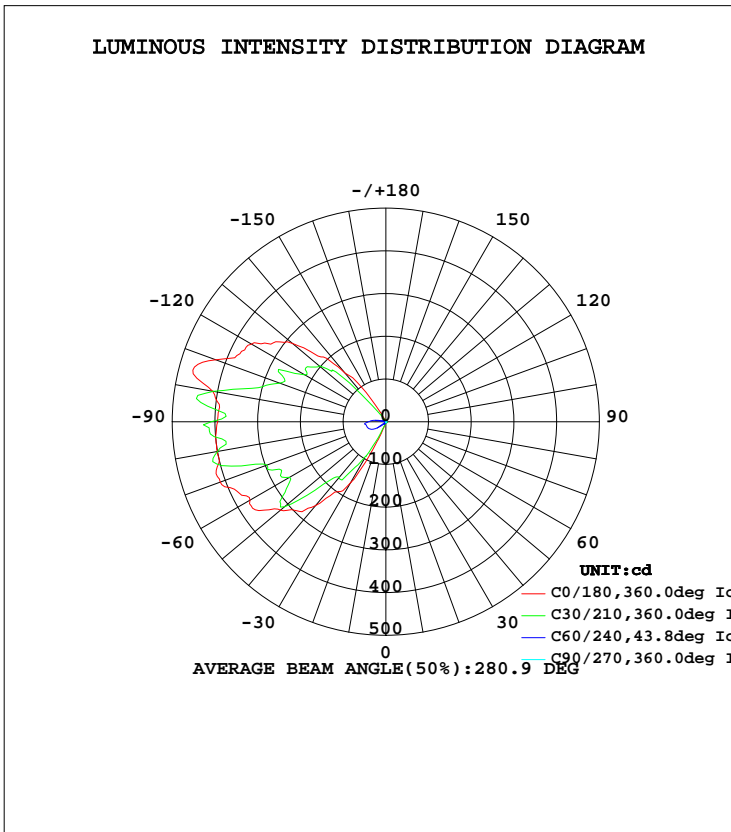


LUMINAIRE PHOTOMETRIC TEST REPORT

Test:U:120.0V I:0.0802A P:9.423W PF:0.9796 Lamp Flux:983.71x1 lm		
NAME: ASD-OLCLS-1N9CC-PC-BK/BZ 4000K	TYPE:LED	WEIGHT:
SPEC.:	DIM.:	SERIAL No.:
MFR.: ASD Lighting corp	SUR.:	PROTECTION ANGLE:

DATA OF LAMP		PHOTOMETRIC DATA Eff: 104.39 lm/W			
MODEL	ASD-OLCLS-1N9CC-BK	I _{max} (cd)	511.1	S/MH(C0/180)	11.86
NOMINAL POWER(W)	9	LOR(%)	100.0	S/MH(C90/270)	0.98
RATED VOLTAGE(V)	120	TOTAL FLUX(lm)	983.71	η UP, DN(C0-180)	19.0,27.2
NOMINAL FLUX(lm)	983.71	CIE CLASS	DIFFUSE	η UP, DN(C180-360)	24.9,28.9
LAMPS INSIDE	1	η up(%)	43.9	CIBSE SHR NOM	0.00
TEST VOLTAGE(V)	120	η down(%)	56.1	CIBSE SHR MAX	1.00



C Range: 0 - 360DEG
 C Interval: 15.0DEG
 Test Speed: HIGH
 Temperature:25.3DEG
 Operators:
 Test Date:2022-03-29

γ Range: 0 - 180DEG
 γ Interval: 1.0DEG
 Test System:EVERFINE GO-2000B_V1 SYSTEM V2.0.291
 Humidity:65.0%
 Test Distance:7.500m [K=1.0000]
 Remarks:

ZONAL FLUX DIAGRAM

ZONAL FLUX DIAGRAM:

γ	C0	C45	C90	C135	C180	C225	C270	C315	γ	Φ zone	Φ total	$\%lum, lamp$
10	2.563	1.841	2.819	7.020	5.820	3.930	2.360	2.115	0- 10	0.3170	0.3170	0.03,0.03
20	2.657	2.011	2.870	15.42	14.07	6.798	2.025	2.210	10- 20	1.561	1.878	0.19,0.19
30	2.903	2.253	3.007	107.3	164.1	19.17	1.725	2.407	20- 30	12.01	13.89	1.41,1.41
40	3.231	2.534	2.793	148.7	256.4	95.53	1.413	2.665	30- 40	33.44	47.33	4.81,4.81
50	3.547	2.835	2.570	269.0	321.9	160.2	1.228	2.934	40- 50	59.62	107.0	10.9,10.9
60	3.901	3.108	2.138	275.7	367.2	140.0	1.175	3.266	50- 60	86.81	193.8	19.7,19.7
70	4.221	3.331	1.945	236.7	412.9	237.0	1.244	3.508	60- 70	101.8	295.5	30,30
80	4.563	3.459	1.622	413.1	400.8	243.7	1.313	3.755	70- 80	123.8	419.3	42.6,42.6
90	4.783	3.555	1.491	267.7	394.0	247.5	1.375	3.913	80- 90	132.5	551.8	56.1,56.1
100	4.687	3.497	1.371	226.0	411.8	247.3	1.433	3.886	90-100	124.9	676.7	68.8,68.8
110	4.379	3.381	1.306	247.0	424.8	174.3	1.479	3.774	100-110	116.6	793.2	80.6,80.6
120	3.987	3.243	1.356	151.3	363.7	119.8	1.537	3.543	110-120	89.85	883.1	89.8,89.8
130	3.628	3.023	1.402	32.71	285.0	32.95	1.598	3.278	120-130	60.65	943.7	95.9,95.9
140	3.324	2.777	1.433	6.686	148.9	8.655	1.627	3.066	130-140	30.27	974.0	99,99
150	3.181	2.542	1.494	3.505	23.08	3.959	1.633	2.812	140-150	7.390	981.4	99.8,99.8
160	3.193	2.334	1.544	1.903	6.238	1.903	1.652	2.569	150-160	1.443	982.8	99.9,99.9
170	3.158	2.137	1.581	1.987	3.173	1.933	1.655	2.357	160-170	0.6609	983.5	100,100
180	3.158	2.014	1.618	2.134	3.158	2.014	1.598	2.130	170-180	0.2093	983.7	100,100
DEG	LUMINOUS INTENSITY:cd									UNIT:lm		

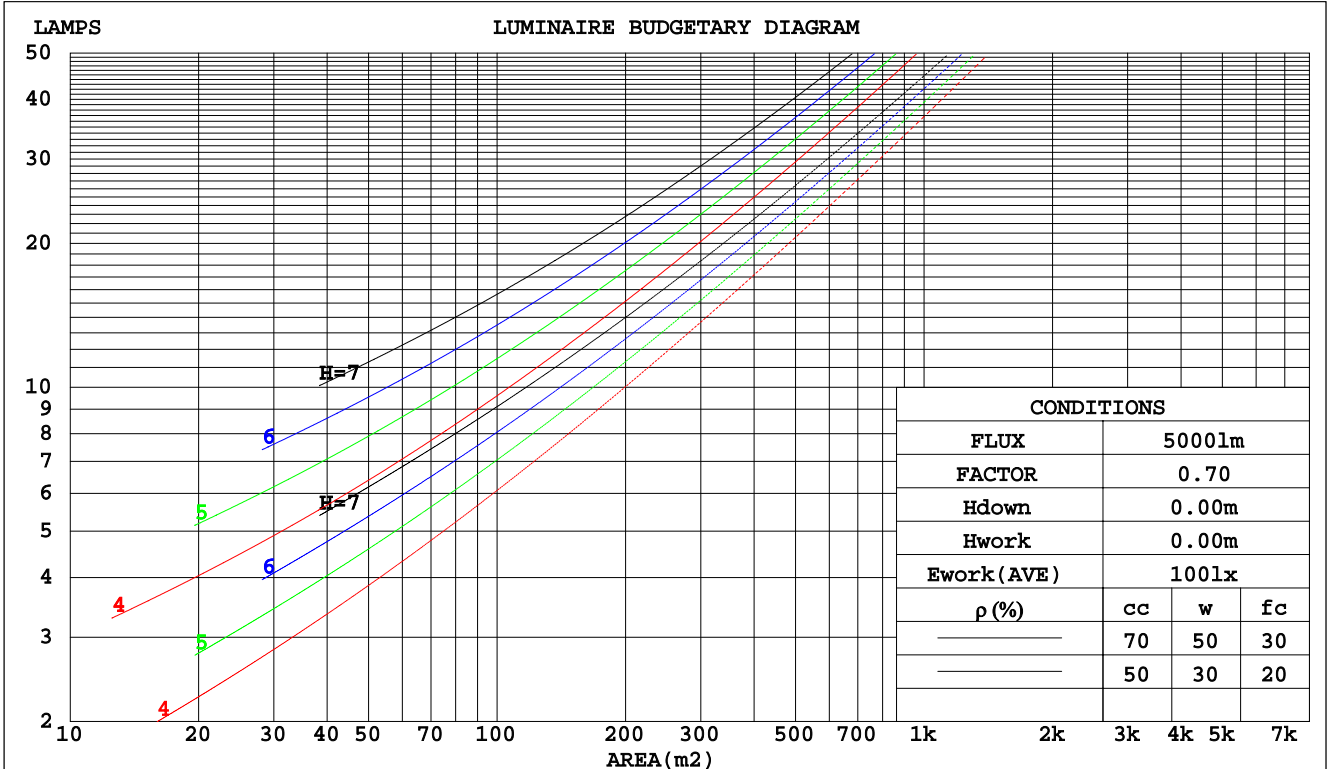
C Range: 0 - 360DEG
C Interval: 15.0DEG
Test Speed: HIGH
Temperature:25.3DEG
Operators:
Test Date:2022-03-29

γ Range: 0 - 180DEG
 γ Interval: 1.0DEG
Test System:EVERFINE GO-2000B_V1 SYSTEM V2.0.291
Humidity:65.0%
Test Distance:7.500m [K=1.0000]
Remarks:

CU AND LUMINAIRE BUDGETARY ESTIMATE DIAGRAM

Test:U:120.0V I:0.0802A P:9.423W PF:0.9796 Lamp Flux:983.71x1 lm		
NAME: ASD-OLCLS-1N9CC-PC-BK/BZ 4000K	TYPE:LED	WEIGHT:
SPEC.:	DIM.:	SERIAL No.:
MFR.: ASD Lighting corp	SUR.:	PROTECTION ANGLE:

pcc	80%			70%			50%			30%			10%			0
	50%	30%	10%	50%	30%	10%	50%	30%	10%	50%	30%	10%	50%	30%	10%	0
pw																0
pfc	20%			20%			20%			20%			20%			0
RCR	RCR:Room Cavity Ratio						Coefficients of Utilization(CU)									
0.0	1.09	1.09	1.09	1.01	1.01	1.01	.87	.87	.87	.74	.74	.74	.62	.62	.62	.56
1.0	.85	.78	.72	.78	.72	.67	.66	.61	.57	.54	.50	.47	.44	.41	.38	.33
2.0	.70	.61	.53	.64	.56	.49	.54	.47	.42	.44	.38	.34	.34	.30	.27	.22
3.0	.59	.49	.41	.54	.45	.38	.45	.38	.32	.36	.31	.26	.28	.24	.20	.16
4.0	.51	.41	.33	.47	.37	.30	.39	.31	.25	.31	.25	.20	.24	.19	.15	.11
5.0	.45	.34	.27	.41	.32	.25	.34	.26	.20	.27	.21	.16	.21	.16	.12	.09
6.0	.39	.29	.22	.36	.27	.21	.30	.22	.17	.24	.18	.13	.18	.14	.10	.07
7.0	.35	.26	.19	.32	.23	.17	.26	.19	.14	.21	.15	.11	.16	.12	.08	.05
8.0	.31	.22	.16	.29	.20	.15	.24	.17	.12	.19	.14	.09	.15	.10	.07	.04
9.0	.28	.20	.14	.26	.18	.13	.22	.15	.10	.17	.12	.08	.13	.09	.06	.03
10.0	.26	.18	.12	.24	.16	.11	.20	.13	.09	.16	.11	.07	.12	.08	.05	.03



C Range: 0 - 360DEG
 C Interval: 15.0DEG
 Test Speed: HIGH
 Temperature: 25.3DEG
 Operators:
 Test Date: 2022-03-29

γ Range: 0 - 180DEG
 γ Interval: 1.0DEG
 Test System: EVERFINE GO-2000B_V1 SYSTEM V2.0.291
 Humidity: 65.0%
 Test Distance: 7.500m [K=1.0000]
 Remarks:

WEC AND CCEC

Test:U:120.0V I:0.0802A P:9.423W PF:0.9796 Lamp Flux:983.71x1 lm		
NAME: ASD-OLCLS-1N9CC-PC-BK/BZ 4000K	TYPE:LED	WEIGHT:
SPEC.:	DIM.:	SERIAL No.:
MFR.: ASD Lighting corp	SUR.:	PROTECTION ANGLE:

ρcc	80%			70%			50%			30%			10%			0
ρw	50%	30%	10%	50%	30%	10%	50%	30%	10%	50%	30%	10%	50%	30%	10%	0
ρfc	20%			20%			20%			20%			20%			0
RCR	RCR:Room Cavity Ratio						Wall Exitance Coefficients(WEC)									
0.0																
1.0	.474	.270	.085	.453	.259	.082	.414	.238	.076	.379	.218	.070	.346	.200	.065	
2.0	.385	.211	.065	.366	.202	.062	.330	.184	.057	.297	.167	.052	.267	.151	.048	
3.0	.330	.176	.053	.312	.167	.050	.280	.152	.046	.250	.137	.042	.222	.123	.038	
4.0	.290	.151	.044	.274	.143	.042	.244	.129	.039	.216	.116	.035	.191	.104	.032	
5.0	.259	.132	.038	.244	.125	.037	.217	.113	.033	.192	.101	.030	.168	.090	.027	
6.0	.234	.117	.034	.221	.112	.032	.196	.100	.029	.172	.089	.026	.150	.079	.023	
7.0	.214	.106	.030	.201	.100	.029	.178	.090	.026	.156	.080	.023	.136	.071	.021	
8.0	.197	.096	.027	.185	.091	.026	.164	.082	.023	.143	.073	.021	.124	.064	.019	
9.0	.182	.088	.025	.171	.084	.023	.151	.075	.021	.132	.066	.019	.115	.058	.017	
10.0	.169	.081	.023	.159	.077	.021	.141	.069	.019	.123	.061	.017	.106	.053	.015	

ρcc	80%			70%			50%			30%			10%			0
ρw	50%	30%	10%	50%	30%	10%	50%	30%	10%	50%	30%	10%	50%	30%	10%	0
ρfc	20%			20%			20%			20%			20%			0
RCR	RCR:Room Cavity Ratio						Ceiling Cavity Exitance Coefficients(CCEC)									
0.0	.525	.525	.525	.449	.449	.449	.306	.306	.306	.176	.176	.176	.056	.056	.056	
1.0	.529	.492	.459	.453	.422	.395	.310	.291	.273	.178	.168	.159	.057	.054	.051	
2.0	.524	.471	.426	.449	.405	.369	.308	.281	.257	.177	.163	.151	.057	.053	.049	
3.0	.517	.456	.407	.444	.393	.353	.305	.273	.248	.176	.160	.146	.057	.052	.048	
4.0	.510	.445	.395	.437	.384	.343	.301	.268	.242	.174	.157	.143	.056	.051	.047	
5.0	.502	.436	.387	.431	.377	.337	.297	.263	.238	.172	.155	.141	.055	.050	.046	
6.0	.494	.429	.381	.425	.371	.332	.293	.260	.235	.170	.153	.140	.055	.050	.046	
7.0	.487	.422	.377	.419	.366	.329	.289	.257	.233	.168	.151	.139	.054	.050	.046	
8.0	.480	.417	.374	.413	.362	.326	.286	.254	.231	.166	.150	.138	.054	.049	.046	
9.0	.474	.413	.372	.408	.358	.324	.283	.252	.230	.165	.149	.137	.053	.049	.045	
10.0	.468	.409	.370	.403	.355	.322	.280	.250	.229	.163	.148	.137	.053	.048	.045	

C Range: 0 - 360DEG
 C Interval: 15.0DEG
 Test Speed: HIGH
 Temperature:25.3DEG
 Operators:
 Test Date:2022-03-29

γ Range: 0 - 180DEG
 γ Interval: 1.0DEG
 Test System:EVERFINE GO-2000B_V1 SYSTEM V2.0.291
 Humidity:65.0%
 Test Distance:7.500m [K=1.0000]
 Remarks:

UGR(Unified Glare Rating) Table

Test:U:120.0V I:0.0802A P:9.423W PF:0.9796 Lamp Flux:983.7lx1 lm										
NAME: ASD-OLCLS-1N9CC-PC-BK/BZ 4000K					TYPE:LED			WEIGHT:		
SPEC.:					DIM.:			SERIAL No.:		
MFR.: ASD Lighting corp					SUR.:			PROTECTION ANGLE:		
ceiling/cavity	0.7	0.7	0.5	0.5	0.3	0.7	0.7	0.5	0.5	0.3
walls	0.5	0.3	0.5	0.3	0.3	0.5	0.3	0.5	0.3	0.3
working plane	0.2	0.2	0.2	0.2	0.2	0.2	0.2	0.2	0.2	0.2
Room dimensions	Viewed crosswise					Viewed endwise				
x = 2H y = 2H	-10.4	-9.1	-9.6	-8.3	-7.2	-14.7	-13.5	-13.9	-12.7	-11.6
3H	-6.7	-5.6	-5.8	-4.7	-3.6	-12.0	-10.9	-11.2	-10.0	-8.9
4H	-4.6	-3.5	-3.8	-2.7	-1.5	-10.5	-9.4	-9.6	-8.5	-7.4
6H	-2.3	-1.3	-1.5	-0.4	0.7	-8.7	-7.7	-7.8	-6.8	-5.6
8H	-1.1	-0.1	-0.2	0.8	2.0	-7.7	-6.7	-6.8	-5.8	-4.6
12H	0.4	1.3	1.2	2.2	3.4	-6.5	-5.6	-5.7	-4.7	-3.5
4H 2H	-9.7	-8.6	-8.9	-7.8	-6.6	-12.4	-11.3	-11.5	-10.4	-9.3
3H	-5.8	-4.8	-4.9	-3.9	-2.7	-9.7	-8.8	-8.8	-7.8	-6.7
4H	-3.5	-2.6	-2.6	-1.7	-0.5	-8.2	-7.3	-7.3	-6.4	-5.2
6H	-1.0	-0.2	-0.1	0.8	2.0	-6.6	-5.8	-5.7	-4.8	-3.6
8H	0.4	1.1	1.3	2.1	3.3	-5.6	-4.9	-4.7	-3.9	-2.7
12H	1.9	2.6	2.9	3.6	4.8	-4.5	-3.8	-3.6	-2.9	-1.6
8H 4H	-3.0	-2.3	-2.1	-1.3	-0.1	-6.4	-5.6	-5.4	-4.7	-3.5
6H	-0.2	0.4	0.8	1.4	2.7	-4.5	-3.8	-3.5	-2.9	-1.6
8H	1.4	2.0	2.4	3.0	4.2	-3.4	-2.9	-2.5	-1.9	-0.6
12H	3.3	3.8	4.2	4.8	6.0	-2.3	-1.8	-1.3	-0.8	0.5
12H 4H	-3.0	-2.3	-2.0	-1.3	-0.1	-5.7	-5.0	-4.8	-4.1	-2.8
6H	-0.0	0.6	0.9	1.5	2.8	-3.6	-3.0	-2.6	-2.0	-0.8
8H	1.7	2.2	2.7	3.2	4.5	-2.4	-1.9	-1.4	-0.9	0.4
Variations with the observer position at spacings:										
S = 1.0H	+ 0.1 / - 0.1					+ 0.1 / - 0.1				
1.5H	+ 0.3 / - 0.3					+ 0.1 / - 0.1				
2.0H	+ 0.3 / - 0.4					+ 0.2 / - 0.2				

CIE Pub.117 Corrected 983.7 lm Total Lamp Luminous Flux. (8log(F/F0) = -0.1)

C Range: 0 - 360DEG
 C Interval: 15.0DEG
 Test Speed: HIGH
 Temperature:25.3DEG
 Operators:
 Test Date:2022-03-29

γ Range: 0 - 180DEG
 γ Interval: 1.0DEG
 Test System:EVERFINE GO-2000B_V1 SYSTEM V2.0.291
 Humidity:65.0%
 Test Distance:7.500m [K=1.0000]
 Remarks:

UTILIZATION FACTORS TABLE

Test:U:120.0V I:0.0802A P:9.423W PF:0.9796 Lamp Flux:983.71x1 lm		
NAME: ASD-OLCLS-1N9CC-PC-BK/BZ 4000K	TYPE:LED	WEIGHT:
SPEC.:	DIM.:	SERIAL No.:
MFR.: ASD Lighting corp	SUR.:	PROTECTION ANGLE:

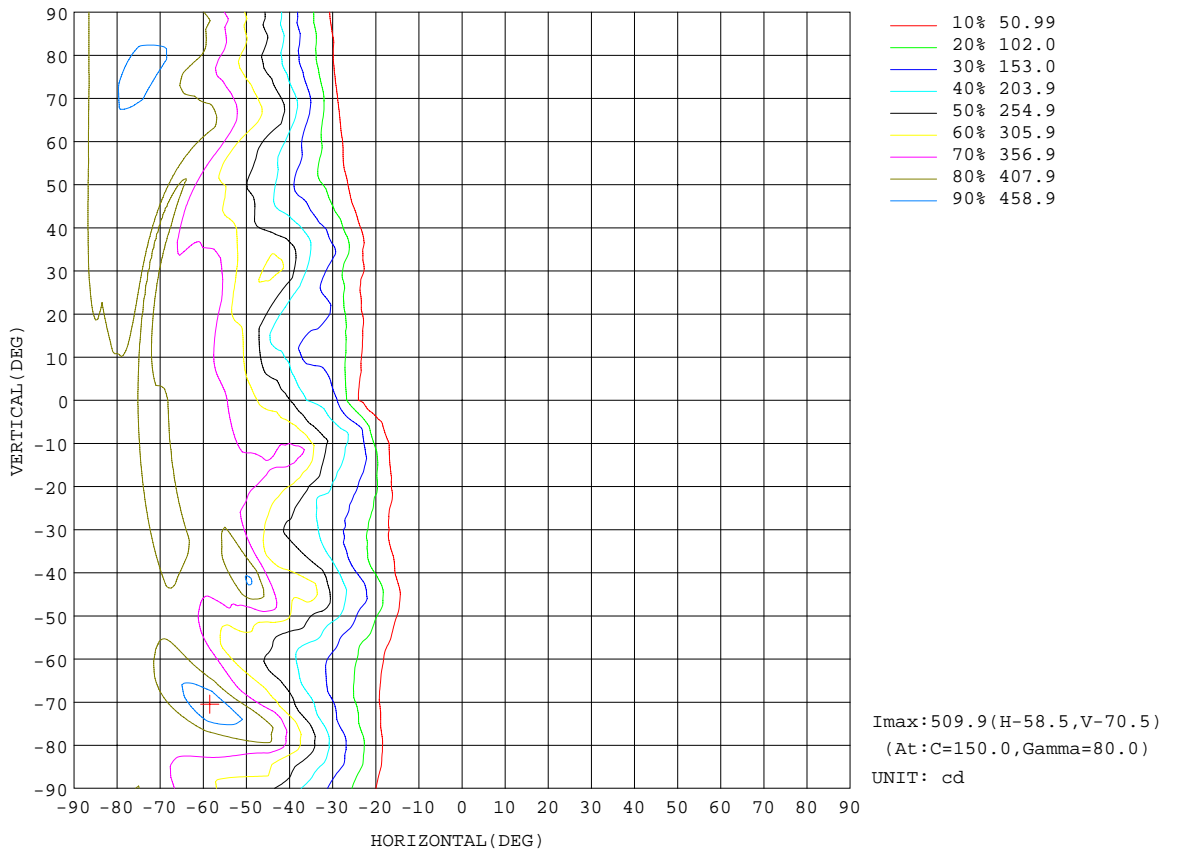
REFLECTANCE										
Ceiling	0.8	0.8	0.8	0.7	0.7	0.7	0.5	0.5	0.5	0
Walls	0.7	0.5	0.3	0.7	0.5	0.3	0.7	0.5	0.3	0
Working plane	0.2	0.2	0.2	0.2	0.2	0.2	0.2	0.2	0.2	0
ROOM INDEX	UTILIZATION FACTORS(PERCENT) $k(RI) \times RCR = 5$									
k = 0.60	33	19	11	31	18	11	28	17	10	3
0.80	41	26	17	39	25	16	35	22	15	6
1.00	48	33	23	45	31	22	40	30	20	9
1.25	55	40	29	52	37	28	45	33	25	12
1.50	61	45	34	57	43	33	49	38	29	15
2.00	69	54	44	64	51	41	55	45	36	19
2.50	74	61	50	69	57	47	59	49	42	23
3.00	79	66	56	73	62	53	62	53	46	26
4.00	84	73	64	78	68	60	67	59	52	30
5.00	88	78	70	82	73	66	70	63	57	33
ROOM INDEX	UF(total)									Direct
According to DIN EN 13032-2 2004			Suspended				SHRNOM = 1.25			

C Range: 0 - 360DEG
 C Interval: 15.0DEG
 Test Speed: HIGH
 Temperature:25.3DEG
 Operators:
 Test Date:2022-03-29

γ Range: 0 - 180DEG
 γ Interval: 1.0DEG
 Test System:EVERFINE GO-2000B_V1 SYSTEM V2.0.291
 Humidity:65.0%
 Test Distance:7.500m [K=1.0000]
 Remarks:

ISOCANDELA DIAGRAM

Test:U:120.0V I:0.0802A P:9.423W PF:0.9796 Lamp Flux:983.71x1 lm		
NAME: ASD-OLCLS-1N9CC-PC-BK/BZ 4000K	TYPE:LED	WEIGHT:
SPEC.:	DIM.:	SERIAL No.:
MFR.: ASD Lighting corp	SUR.:	PROTECTION ANGLE:

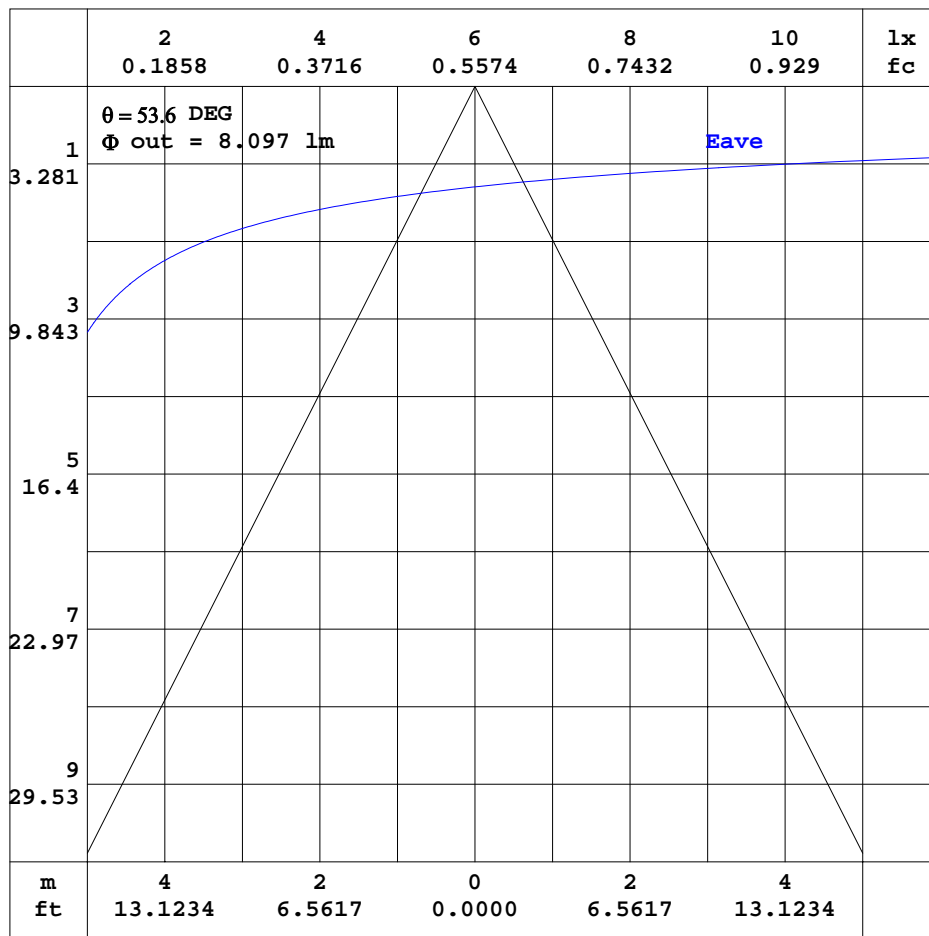


C Range: 0 - 360DEG
 C Interval: 15.0DEG
 Test Speed: HIGH
 Temperature:25.3DEG
 Operators:
 Test Date:2022-03-29

γ Range: 0 - 180DEG
 γ Interval: 1.0DEG
 Test System:EVERFINE GO-2000B_V1 SYSTEM V2.0.291
 Humidity:65.0%
 Test Distance:7.500m [K=1.0000]
 Remarks:

AAI CURVES

Test:U:120.0V I:0.0802A P:9.423W PF:0.9796 Lamp Flux:983.71x1 lm		
NAME: ASD-OLCLS-1N9CC-PC-BK/BZ 4000K	TYPE:LED	WEIGHT:
SPEC.:	DIM.:	SERIAL No.:
MFR.: ASD Lighting corp	SUR.:	PROTECTION ANGLE:



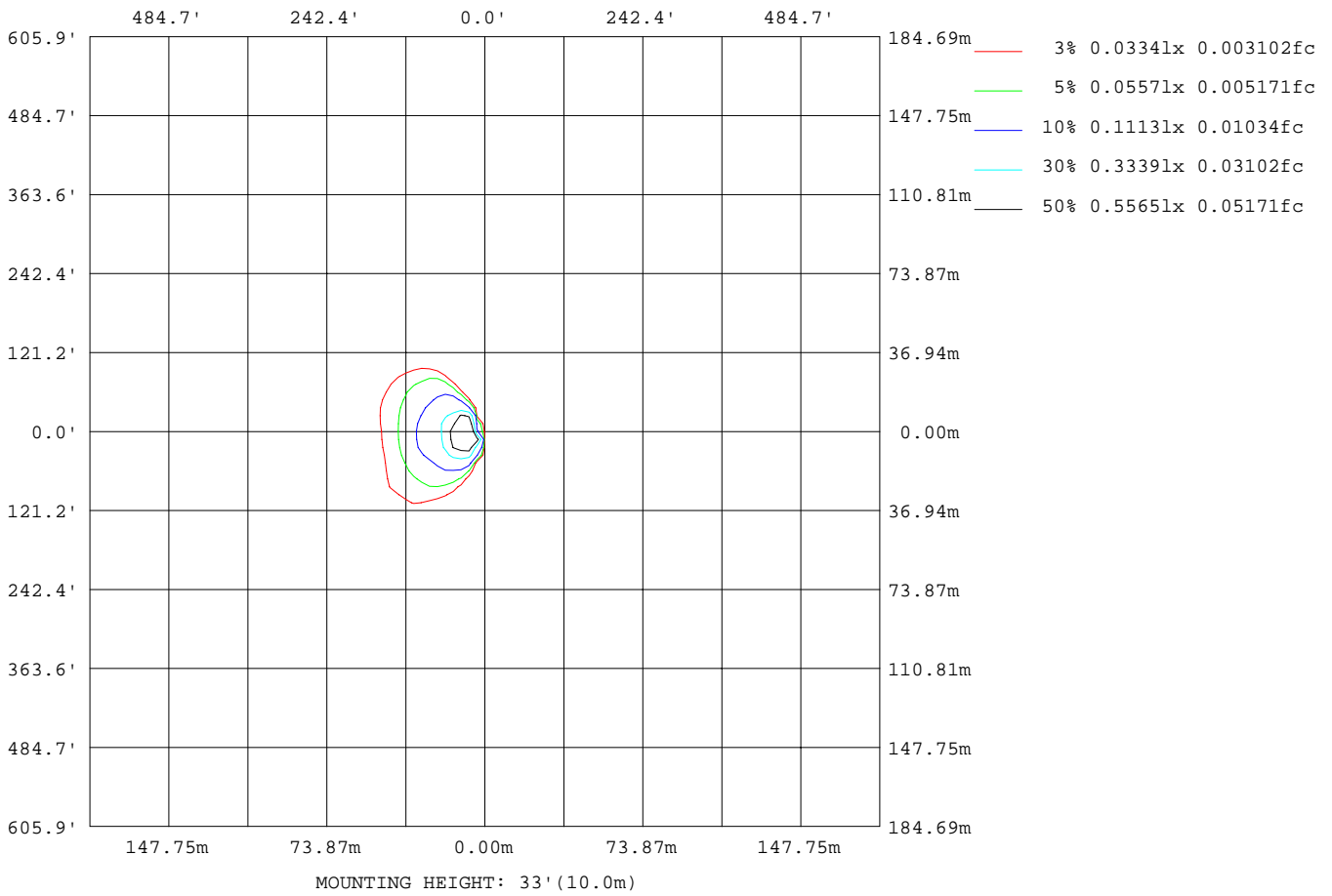
Note:The Curves indicate the illuminated area and the average illumination when the luminaire is at different distance.

C Range: 0 - 360DEG
 C Interval: 15.0DEG
 Test Speed: HIGH
 Temperature:25.3DEG
 Operators:
 Test Date:2022-03-29

γ Range: 0 - 180DEG
 γ Interval: 1.0DEG
 Test System:EVERFINE GO-2000B_V1 SYSTEM V2.0.291
 Humidity:65.0%
 Test Distance:7.500m [K=1.0000]
 Remarks:

ISOLUX DIAGRAM

Test:U:120.0V I:0.0802A P:9.423W PF:0.9796 Lamp Flux:983.71x1 lm		
NAME: ASD-OLCLS-1N9CC-PC-BK/BZ 4000K	TYPE:LED	WEIGHT:
SPEC.:	DIM.:	SERIAL No.:
MFR.: ASD Lighting corp	SUR.:	PROTECTION ANGLE:



C Range: 0 - 360DEG
 C Interval: 15.0DEG
 Test Speed: HIGH
 Temperature: 25.3DEG
 Operators:
 Test Date: 2022-03-29

γ Range: 0 - 180DEG
 γ Interval: 1.0DEG
 Test System: EVERFINE GO-2000B_V1 SYSTEM V2.0.291
 Humidity: 65.0%
 Test Distance: 7.500m [K=1.0000]
 Remarks:

LED Avg.L Report

Test:U:120.0V I:0.0802A P:9.423W PF:0.9796 Lamp Flux:983.71x1 lm		
NAME: ASD-OLCLS-1N9CC-PC-BK/BZ 4000K	TYPE:LED	WEIGHT:
SPEC.:	DIM.:	SERIAL No.:
MFR.: ASD Lighting corp	SUR.:	PROTECTION ANGLE:

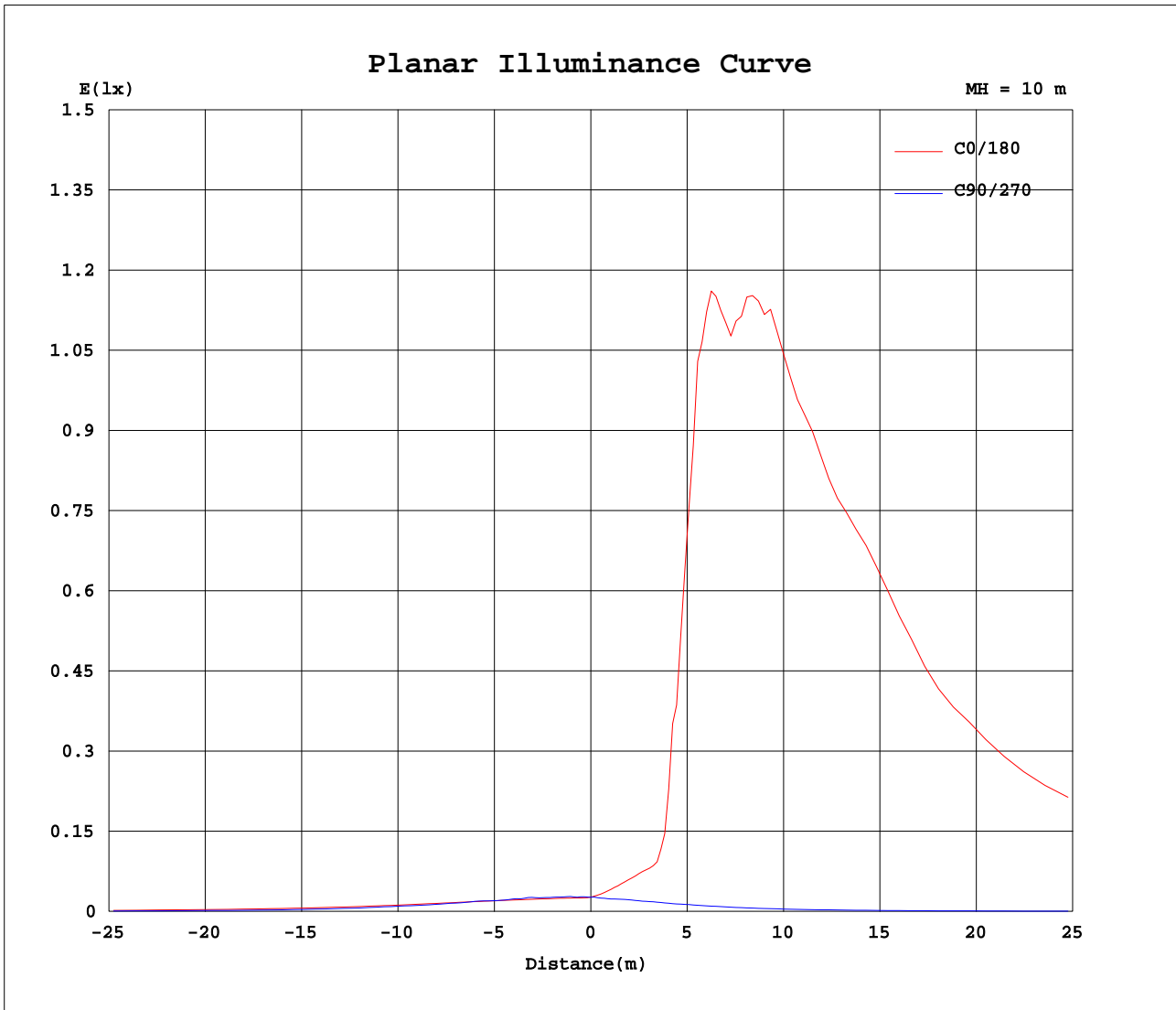
AvgL	cd/m2
L_0~180(65)av	4599
L_0~180(75)av	7984
L_0~180(85)av	23233
L_90~270(65)av	38
L_90~270(75)av	58
L_90~270(85)av	165
L_45(65)av	2420
L_45(75)av	5656
L_45(85)av	16914

Standard: GB/T 29293-2012

C Range: 0 - 360DEG
C Interval: 15.0DEG
Test Speed: HIGH
Temperature:25.3DEG
Operators:
Test Date:2022-03-29

γ Range: 0 - 180DEG
 γ Interval: 1.0DEG
Test System:EVERFINE GO-2000B_V1 SYSTEM V2.0.291
Humidity:65.0%
Test Distance:7.500m [K=1.0000]
Remarks:

Planar Illuminance Curve



C Range: 0 - 360DEG
 C Interval: 15.0DEG
 Test Speed: HIGH
 Temperature: 25.3DEG
 Operators:
 Test Date: 2022-03-29

γ Range: 0 - 180DEG
 γ Interval: 1.0DEG
 Test System: EVERFINE GO-2000B_V1 SYSTEM V2.0.291
 Humidity: 65.0%
 Test Distance: 7.500m [K=1.0000]
 Remarks:

LUMINOUS DISTRIBUTION INTENSITY DATA

Test:U:120.0V I:0.0802A P:9.423W PF:0.9796 Lamp Flux:983.71x1 lm		
NAME: ASD-OLCLS-1N9CC-PC-BK/BZ 4000K	TYPE:LED	WEIGHT:
SPEC.:	DIM.:	SERIAL No.:
MFR.: ASD Lighting corp	SUR.:	PROTECTION ANGLE:

Table--1

UNIT: cd

C(DEG) γ (DEG)	0	15	30	45	60	75	90	105	120	135	150	165	180	195	210	225	240	255	270
0	2.71	2.61	2.44	2.16	1.87	2.52	2.68	2.87	3.34	3.81	4.27	4.20	2.71	2.61	2.44	2.16	1.87	2.52	2.68
5	2.55	2.38	2.12	1.79	1.57	2.21	2.75	3.28	4.20	5.30	6.01	6.10	3.88	3.77	3.54	2.99	2.32	2.70	2.41
10	2.56	2.43	2.15	1.84	1.50	1.96	2.82	3.90	5.36	7.02	8.19	8.41	5.82	5.67	4.94	3.93	2.92	3.03	2.36
15	2.59	2.48	2.21	1.92	1.57	1.71	2.85	4.38	6.63	8.78	12.4	13.1	8.29	7.77	6.61	5.30	3.67	3.21	2.16
20	2.66	2.56	2.31	2.01	1.65	1.52	2.87	5.00	8.46	15.4	55.3	60.7	14.1	12.1	8.87	6.80	4.27	3.49	2.03
25	2.77	2.68	2.43	2.12	1.72	1.37	2.82	5.30	10.1	61.1	143	174	69.2	60.3	30.1	8.49	5.15	3.62	1.84
30	2.90	2.84	2.58	2.25	1.81	1.28	3.01	6.21	19.5	107	184	230	164	124	92.7	19.2	6.18	3.87	1.72
35	3.07	3.03	2.76	2.39	1.89	1.27	2.86	6.68	46.4	129	200	296	200	139	140	53.6	6.89	3.91	1.56
40	3.23	3.24	2.95	2.53	2.01	1.32	2.79	7.35	73.2	149	204	374	256	157	170	95.5	7.61	3.95	1.41
45	3.40	3.43	3.13	2.68	2.09	1.37	2.85	7.88	116	190	236	366	295	187	206	160	9.61	3.96	1.32
50	3.55	3.61	3.31	2.83	2.18	1.43	2.57	8.30	161	269	256	372	322	264	310	160	15.9	3.89	1.23
55	3.73	3.80	3.49	2.98	2.28	1.48	2.36	8.18	144	325	300	376	363	300	288	150	26.6	3.93	1.17
60	3.90	3.99	3.68	3.11	2.36	1.54	2.14	8.16	119	276	453	392	367	380	260	140	34.8	3.87	1.17
65	4.05	4.14	3.85	3.24	2.45	1.59	2.04	7.99	119	219	362	396	385	392	269	184	40.6	3.77	1.21
70	4.22	4.33	4.00	3.33	2.53	1.65	1.95	7.87	127	237	292	419	413	352	296	237	44.3	3.71	1.24
75	4.40	4.49	4.14	3.39	2.59	1.70	1.73	7.67	150	301	370	405	409	407	398	277	46.0	3.59	1.27
80	4.56	4.65	4.27	3.46	2.63	1.75	1.62	7.29	184	413	511	399	401	456	400	244	46.7	3.41	1.31
85	4.70	4.77	4.36	3.52	2.66	1.79	1.54	6.64	183	333	395	395	400	470	404	249	49.8	3.18	1.34
90	4.78	4.84	4.40	3.55	2.70	1.81	1.49	5.85	143	268	316	409	394	454	409	247	41.1	2.94	1.37
95	4.77	4.84	4.38	3.55	2.70	1.84	1.44	5.20	110	224	389	421	391	441	418	233	33.5	2.71	1.41
100	4.69	4.76	4.29	3.50	2.71	1.87	1.37	4.60	86.9	226	451	485	412	449	410	247	20.6	2.44	1.43
105	4.54	4.63	4.19	3.44	2.69	1.90	1.33	3.97	67.3	241	430	454	468	382	309	231	11.1	2.25	1.46
110	4.38	4.46	4.09	3.38	2.67	1.91	1.31	3.59	32.3	247	332	439	425	415	264	174	9.49	1.98	1.48
115	4.19	4.31	3.98	3.32	2.63	1.92	1.34	3.20	12.2	213	296	418	377	409	278	142	8.29	1.80	1.51
120	3.99	4.13	3.85	3.24	2.60	1.91	1.36	2.85	6.80	151	241	367	364	372	220	120	7.13	1.57	1.54
125	3.81	3.94	3.68	3.14	2.55	1.90	1.37	2.12	6.04	99.2	213	339	322	315	225	77.5	7.05	1.29	1.57
130	3.63	3.76	3.51	3.02	2.48	1.89	1.40	1.29	4.91	32.7	168	295	285	225	204	33.0	5.77	1.19	1.60
135	3.46	3.59	3.37	2.91	2.40	1.88	1.42	1.21	4.16	7.90	104	199	215	181	165	9.39	4.52	1.20	1.62
140	3.32	3.40	3.20	2.78	2.31	1.88	1.43	1.27	3.50	6.69	25.9	143	149	138	48.3	8.65	3.89	1.24	1.63
145	3.23	3.27	3.06	2.66	2.23	1.85	1.47	1.31	2.25	5.04	7.45	18.7	98.1	58.6	9.66	6.66	2.48	1.29	1.64
150	3.18	3.16	2.94	2.54	2.13	1.83	1.49	1.36	1.48	3.51	5.70	7.64	23.1	9.16	7.45	3.96	1.41	1.34	1.63
155	3.18	3.11	2.85	2.43	2.03	1.79	1.53	1.43	1.51	2.04	4.21	5.61	8.34	7.10	5.65	2.52	1.39	1.39	1.65
160	3.19	3.06	2.75	2.33	1.95	1.75	1.54	1.48	1.58	1.90	2.59	4.04	6.24	5.44	3.58	1.90	1.44	1.42	1.65
165	3.19	3.00	2.65	2.24	1.88	1.71	1.57	1.55	1.65	1.94	2.35	2.61	3.77	3.10	2.54	1.91	1.48	1.47	1.65
170	3.16	2.94	2.58	2.14	1.81	1.68	1.58	1.61	1.72	1.99	2.35	2.62	3.17	2.90	2.45	1.93	1.54	1.53	1.65
175	3.14	2.89	2.51	2.06	1.74	1.66	1.59	1.68	1.81	2.05	2.37	2.60	3.17	2.89	2.44	1.96	1.59	1.58	1.66
180	3.16	2.88	2.46	2.01	1.66	1.64	1.62	1.72	1.90	2.13	2.40	2.59	3.16	2.89	2.46	2.01	1.66	1.63	1.60

C Range: 0 - 360DEG
 C Interval: 15.0DEG
 Test Speed: HIGH
 Temperature:25.3DEG
 Operators:
 Test Date:2022-03-29

γ Range: 0 - 180DEG
 γ Interval: 1.0DEG
 Test System:EVERFINE GO-2000B_V1 SYSTEM V2.0.291
 Humidity:65.0%
 Test Distance:7.500m [K=1.0000]
 Remarks:

LUMINOUS DISTRIBUTION INTENSITY DATA

Test:U:120.0V I:0.0802A P:9.423W PF:0.9796 Lamp Flux:983.71x1 lm		
NAME: ASD-OLCLS-1N9CC-PC-BK/BZ 4000K	TYPE:LED	WEIGHT:
SPEC.:	DIM.:	SERIAL No.:
MFR.: ASD Lighting corp	SUR.:	PROTECTION ANGLE:

Table--2

UNIT: cd

C(DEG) γ (DEG)	285	300	315	330	345														
0	2.87	3.34	3.81	4.27	4.20														
5	2.26	2.42	2.66	2.94	3.07														
10	1.90	1.84	2.11	2.57	2.94														
15	1.55	1.65	2.13	2.62	2.99														
20	1.38	1.73	2.21	2.68	3.04														
25	1.32	1.81	2.30	2.78	3.12														
30	1.39	1.90	2.41	2.91	3.25														
35	1.46	2.00	2.53	3.05	3.38														
40	1.52	2.10	2.66	3.21	3.51														
45	1.59	2.20	2.81	3.35	3.64														
50	1.65	2.30	2.93	3.48	3.77														
55	1.73	2.42	3.09	3.66	3.93														
60	1.82	2.55	3.27	3.86	4.11														
65	1.87	2.67	3.40	4.04	4.26														
70	1.92	2.75	3.51	4.20	4.42														
75	1.96	2.82	3.62	4.36	4.58														
80	2.01	2.90	3.75	4.48	4.71														
85	2.07	2.98	3.85	4.60	4.83														
90	2.14	3.04	3.91	4.68	4.91														
95	2.17	3.05	3.93	4.69	4.91														
100	2.20	3.05	3.89	4.62	4.83														
105	2.20	3.04	3.83	4.53	4.69														
110	2.21	3.02	3.77	4.42	4.56														
115	2.21	2.99	3.67	4.26	4.39														
120	2.22	2.93	3.54	4.06	4.14														
125	2.23	2.87	3.40	3.86	3.90														
130	2.22	2.81	3.28	3.66	3.67														
135	2.20	2.75	3.17	3.48	3.45														
140	2.16	2.68	3.07	3.32	3.27														
145	2.11	2.59	2.94	3.15	3.10														
150	2.06	2.50	2.81	2.98	2.96														
155	2.03	2.42	2.68	2.84	2.86														
160	1.99	2.33	2.57	2.74	2.79														
165	1.94	2.22	2.46	2.65	2.74														
170	1.87	2.10	2.36	2.55	2.68														
175	1.80	2.01	2.24	2.45	2.62														
180	1.73	1.90	2.13	2.39	2.61														

C Range: 0 - 360DEG
 C Interval: 15.0DEG
 Test Speed: HIGH
 Temperature:25.3DEG
 Operators:
 Test Date:2022-03-29

γ Range: 0 - 180DEG
 γ Interval: 1.0DEG
 Test System:EVERFINE GO-2000B_V1 SYSTEM V2.0.291
 Humidity:65.0%
 Test Distance:7.500m [K=1.0000]
 Remarks: